

Supporting figures:

Mapping the Potential Energy Landscape of Intrinsically Disordered Proteins at Amino Acid Resolution

Valéry Ozenne, Robert Schneider, Mingxi Yao, Jie-rong Huang, Loïc Salmon, Markus
Zweckstetter, Malene Ringkjøbing Jensen and Martin Blackledge

Figure S1. Fitted CS for the selection shown in figure 3 in the main manuscript (grey – random coil, blue-target, red ensemble fit). All values shown in ppm. (a) ASTEROIDS selection using only ^{13}C chemical shifts. (b) ASTEROIDS selection against all chemical shifts.

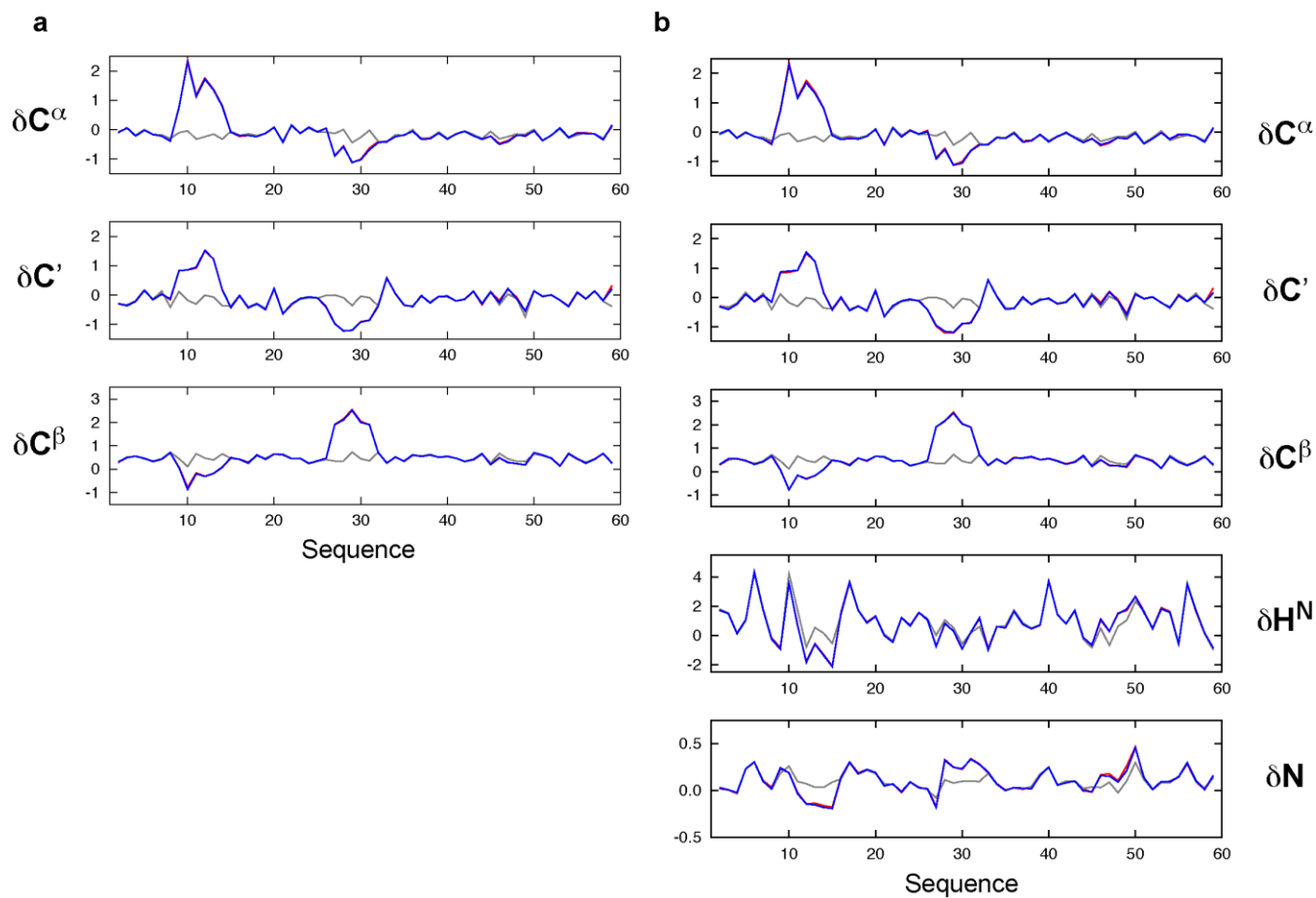


Figure S2. Fitted RDCs for the selection shown in figure 4 in the main manuscript (grey – random coil, blue-target, red ensemble fit).

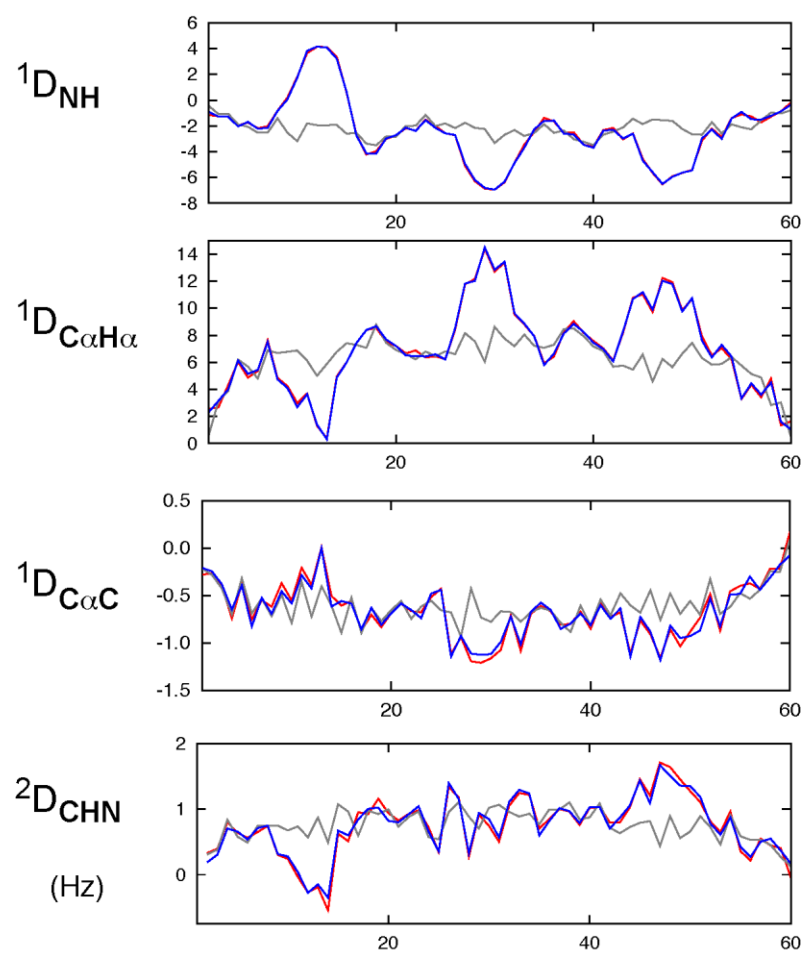


Figure S3. Fitted CS and RDCs for the selection shown in figure 5 in the main manuscript (grey – random coil, blue-target, red ensemble fit).

