



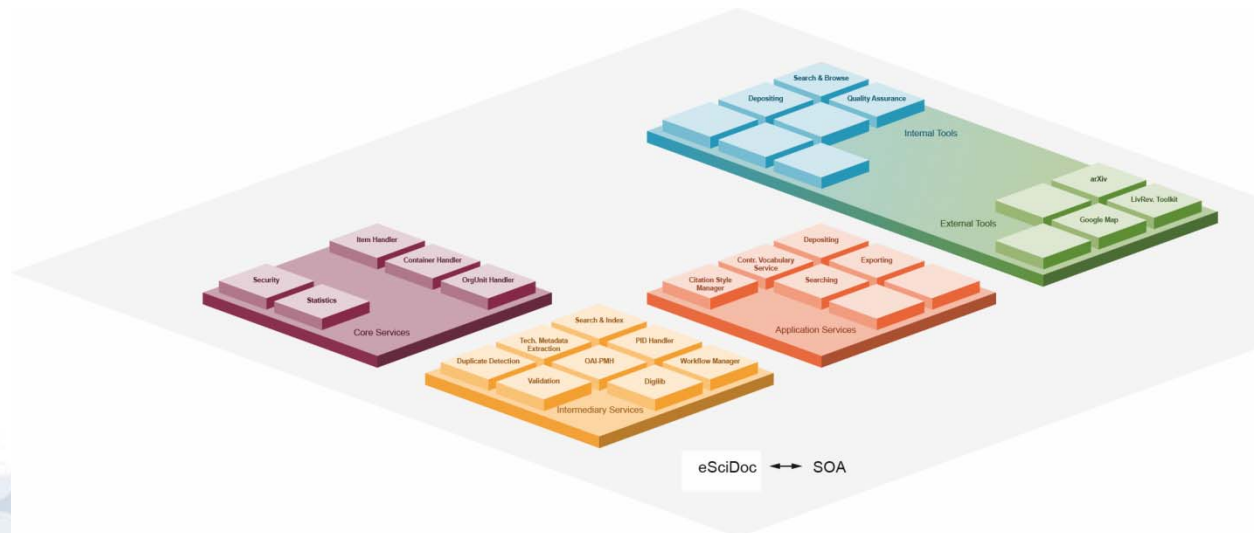
# eSciDoc.PubMan Publication Infrastructure

Malte Dreyer

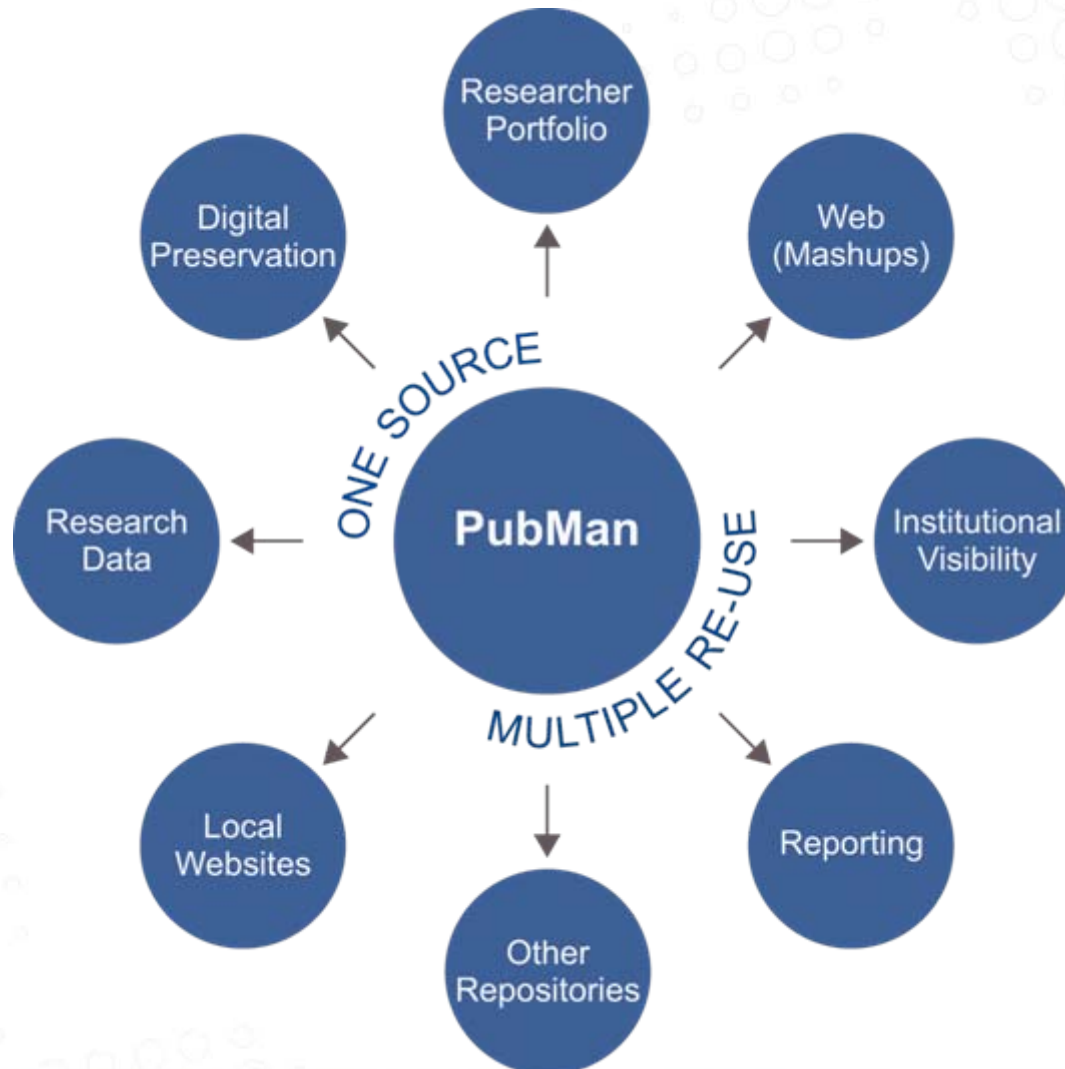


# One Technology

- Open Source
- Modular
- Growing Community
- Sustainable
  
- Infrastructure and Applications
  
- Initial Partners
  - FIZ Karlsruhe
  - MPDL
  
- [www.escidoc.org](http://www.escidoc.org)



# eSciDoc.PubMan Publication Infrastructure





## Why another Repository Software?

- Complex Objects in Design Focus
- Tradeoffs
  - ▲ ■ Archive: Longevity and Stability
  - **Management of Objects:** Enrichment and Re-Purposing
  - ▼ ■ Working Environments: Performance and Flexibility
- Towards a Service Infrastructure for Publication and Research Data

# Functional Levels



Repositories

STARTSEITE MEINE DATENSÄTZE QA BEREICH DATENEINGABE BAS

ANSICHT SORTIERUNG EXPORT ZUM BASKET HINZUFÜGEN

Bibliographische Liste | Tabellarische Ansicht

333 Datensätze gefunden (absteigend sortiert nach Änderungsdatum)

Status	Titel	Urheber	Genre
<input type="checkbox"/>	Radiation effects on the mechanical properties of the material for the BCSII	Zheng, Lifang, ; Wang, Li, ; Wu, Ping, ; Ji, Qian, ...	Konferenzbeitr.
<input type="checkbox"/>	Cross-species mapping of bidirectional	Plontkivska, Helen;	Zeitschriftena

Structure by Chapter

markiertes Element/Seite

Level 1-1

Show:  Pages  Titles

- Band 1
  - Index (Register) : noindex
  - Chapter: noc (IV)
    - 4: v0002 (IV)
    - 5: v0003 (V)
    - 8: d0002 (VIII)
    - 9: d0003 (IX)
  - Chapter (2): Text: Kapitel 2 (XV)
    - 15: d0009 (XV)
    - 16: d0010 (XVI)
    - 17: d0011 (XVII)

Services / Applications

# Architectural Edge

Reinhold von Sengbusch

About

On this website you find the publications of Prof. C von Sengbusch, Reinhold Oskar Kurt von Sengbusch February 1898 in Rigo; † 13 June 1965 in Hamb Director at the Max Planck Institut für Kulturpflanzen Hamburg-Volkendorf and one of the most important researchers of the last century. In addition to his publications you can find out more about his favorite breeding achievements and the scientific impact he has

LANGUAGE DESCRIPTION HERITAGE

an OPEN ACCESS DIGITAL LIBRARY

About

At the Max Planck Society in Germany we are compiling an Open Access digital repository of works that have become important for the investigation of the world-wide linguistic diversity.

The project is called the "Language Description Heritage (LDH) - an Open Access Digital Library" and it aims to provide open access to descriptive material about the world's languages.

Max Planck Institute for Psycholinguistics

Search for:

Project Home

Subprojects

People

Publications

Tools

News

Journal article

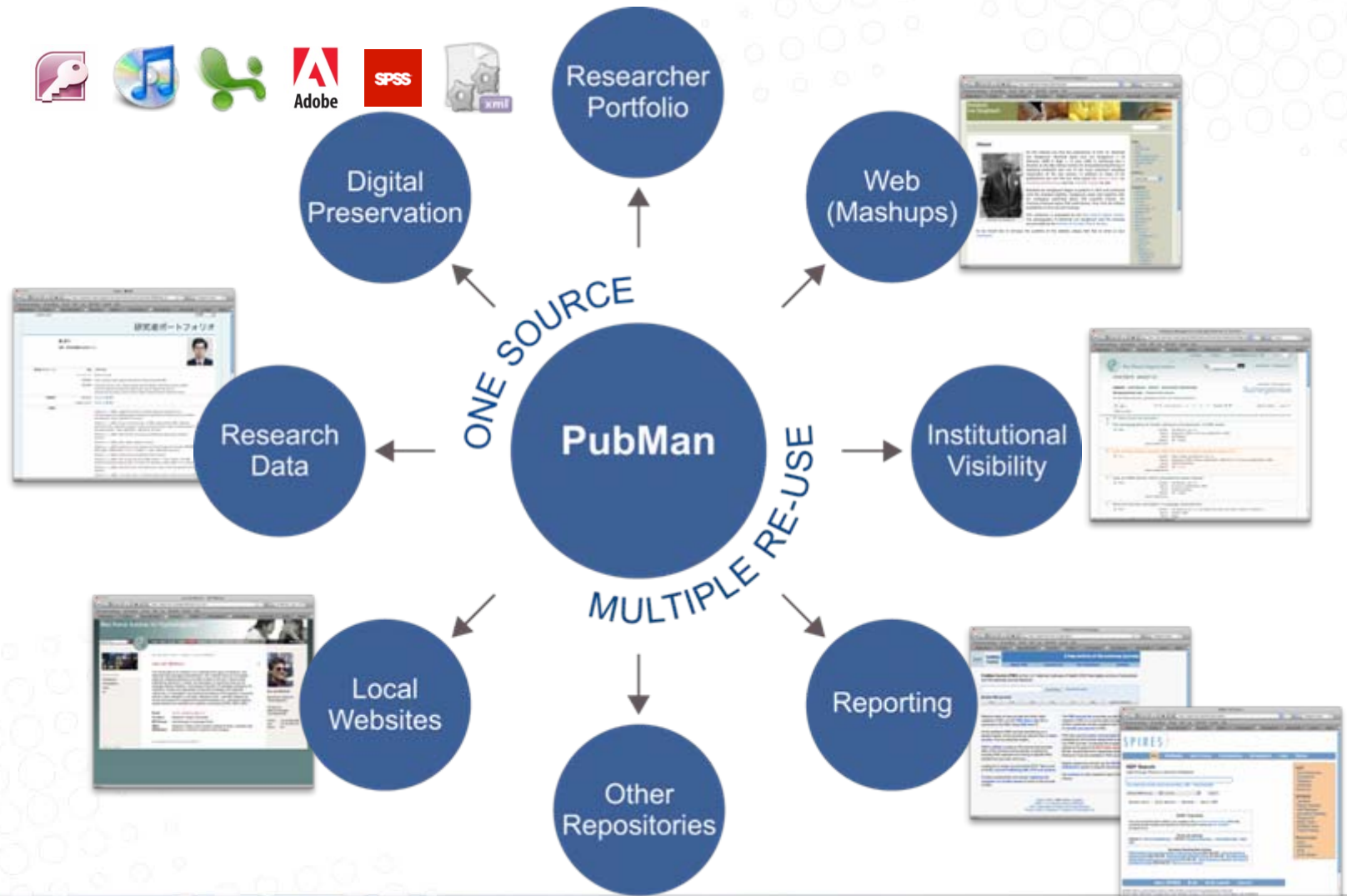
• Pyykkonen, P., & Zankov, J. (in press). Activation and persistence of my causality information in spoken language comprehension. Experimental

Re-Use in other Architectures/ Technologies





# Publication Infrastructure





language

Go

Advanced Search

Browse

 Include files

## START BASKET (0)

VIEW SORT EXPORT ADD SELECTED TO BASKET

Bibliographic List | Table View

5222 Items found (descending sorted by Modification Date)

25 items per page

◀ ◀ Previous | 1 | 2 | 3 | 4 | 5 | 6 | 7 | Next ▶ ▶

Go to page  of 209
 Medium View (all Items)

 Given claims about new topics: How Romance and Germanic speakers link changed a...

 More

Creators	Dimroth, Christine; Andorno, Cecilia; Benazzo, Sandra; Verhagen, Josje
Dates	Submitted: 2009-03-01   Accepted: 2010   Published in Print: 2010
Genre	Journal Article
Files	1 File
Locators	-

 Distracted by relatives: Effects of frontal lobe damage on se

 More

Creators	Telling, Anna L.; Meyr
Dates	Accepted: 2010-05-1
Genre	Journal Article
Files	1 File
Locators	-

 Compensation for assimilatory devoicing and prosodic struct

 More

Creators	Kuzla, Claudia; Ernes
Dates	Accepted: 2009   Pul
Genre	Book Chapter
Files	1 File
Locators	-

 Visual depictions of female genitalia differ depending on so

 More

Creators	Howarth, H.; Sommer
----------	---------------------


 全文含む

## ホーム 一時保存 (0)

一覧表示 | ソート順変更 | ファイル形式で保存 | 選択したアイテムを一時保存へ追加

リスト形式で表示 | 表形式で表示

352 件 ヒットしました (降順ソート条件: 更新日)

25 件

◀ ◀ 前へ | 1 | 2 | 3 | 4 | 5 | 6 | 7 | 次へ ▶ ▶

 アイテムの表示項目を増やす (詳細一覧)

 研究所における図書館の役割 - 脱図書館の今

 詳細一覧

作者	tanifuji, mikiko
日付	紙版出版: 2010-09-27
資料種別	講演
ファイル	1 ファイル
関連URL	1 URL

## About



Reinhold von Sengbusch

On this website you find the publications of Prof. Dr. Reinhold von Sengbusch. Reinhold Oskar Kurt von Sengbusch (\* 16 February 1898 in Riga; † 13 June 1985 in Hamburg) was a Director at the Max Planck Institut für Kulturpflanzenzüchtung in Hamburg-Volksdorf and one of the most important breeding researchers of the last century. In addition to many of his publications you can find out more about his [favorite topic](#), his [breeding achievements](#) and the [scientific impact](#) he had.

Reinhold von Sengbusch began to publish in 1924 and continued until the nineteen-eighties. Sengbusch alone and together with his colleagues published about 300 scientific articles. His institute produced about 600 publications. Over time the [fulltext availability](#) on this site will increase.

This collection is presented by the [Max Planck Digital Library](#). The photographs of Reinhold von Sengbusch and the Institute are provided by the [Archive of the Max Planck Society](#).

As we would like to increase the usability of this website, please feel free to send us your [comments](#).

### Pages

- » [About](#)
- » [Favorite Topic](#)
- » [Legal](#)
- » [Most Successful Topic](#)
- » [Most Yielding Topic](#)
- » [Scientific Impact](#)
- » [Vita](#)

### Archives

### Categories

- » [Breeding](#) (18)
- » [Chemistry](#) (3)
- » [Educational](#) (3)
- » [Fish](#) (48)
  - » [Carps](#) (24)
- » [Kidney stones](#) (17)
- » [Methods](#) (36)
- » [MPI](#) (11)
- » [Mushrooms](#) (80)
- » [Nutrition](#) (5)
- » [Pests](#) (7)
- » [Plants](#) (217)
  - » [Fruit](#) (81)
    - » [Strawberries](#) (77)
  - » [Hemp](#) (15)
  - » [Lupins](#) (53)






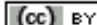
# LANGUAGE DESCRIPTION HERITAGE



an OPEN ACCESS DIGITAL LIBRARY





## Recent additions

Yakubovich, I. S. (2008). Sociolinguistics of the Luvian language: volume 1. PhD Thesis, Univ., Chicago.   [\[pubman\]](#)

Álvarez López, L. (2004). A língua de Camões com Iemanjá: forma e funções da linguagem do candomblé. PhD Thesis, Univ., Stockholm.   [\[pubman\]](#)

Liljegren, H. (2008). Towards a grammatical description of Palula, an Indo-Aryan language of the Hindu Kush. PhD Thesis, Univ., Stockholm.   [\[pubman\]](#)


Nishina, Y. (2004). *Satzverbindung und Satzreduktion am Beispiel der japanischen Konverbkonstruktionen* (N.A.). Erfurt: Univ.   [\[pubman\]](#)

[Advanced Search](#)

## Archive

### Select Category

## Add your work to LDH:

[Permission Form](#)

[For Authors](#)

## LDH Project on the web

[Open Access Information Platform](#)

[Registry of Open Access](#)




Go

Advanced Search

Browse

 Include files

**START BASKET (0)**

 Start  
**Start**

## PubMan 6.1.5-SNAPSHOT - an eSciDoc solution for publication data management

Provide persistent access to your papers and supplementary material!  
 Compile your papers in your personal "Researcher Portfolio"  
 Benefit from the MPG service for long-term archiving!

[Read more](#) | [Support](#)

Search for publications here

Go

... or browse through different categories.

## Short PubMan Introduction Video

The screenshot shows the PubMan website interface. At the top, there is a search bar with a 'Go' button. Below the search bar, there is a video player with a yellow play button. The video title is 'PubMan 6.1.5-SNAPSHOT - an eSciDoc solution for publication data management'. The video player is embedded in a page that also displays the 'START BASKET (0)' and some introductory text about PubMan.

## Latest News from TIB/UB

### Neu an der Leibniz Universität? Ihre Bibliothek

 by [Marketing@tib.uni-hannover.de](mailto:Marketing@tib.uni-hannover.de) - 20 hours ago

Lernen Sie die TIB /UB als Lern- und Arbeitsort kennen und verschaffen Sie sich einen Überblick...

### Zwei Ausbildungsplätze - FaMI

 by [Renate.Minge@tib.uni-hannover.de](mailto:Renate.Minge@tib.uni-hannover.de) - Oct 04, 2010

Stellenausschreibung Nr. 35/2010

inicio-investigación » biblioteca

**biblioteca » savia**

**INICIO ÚLTIMOS MÁS VISTOS TODOS**



Login

Español

[Inicio](#) > Resultados de la búsqueda

# Resultados de la búsqueda

**VER ORDENAR EXPORTAR AÑADIR SELECCIONADOS A LA CESTA**

**Lista Bibliográfica Vista Tabla**

371 Items encontrados (descendente ordenados por Fecha de modificación )

[Revisar la búsqueda](#) [Show Query](#)

25 items por página

Anterior 1 2 3 4 5 6 7 Siguiente

Ir a página  de 15

Fecha	Título	Crearor	Género	
<input type="checkbox"/>	Necesidades futuras para la dinamización de redes empresariales horizontales	Área de conocimiento y documentación, Decanato, EOI	Libro	2006-01-01, Publicado Impreso 1 Fichero
<input type="checkbox"/>	The spanish acorn : tiendas de productos gourmet españoles en USA	GARCÍA BOYADO, VICTORIA; GARCÍA PUJALTE, ÁNGEL; GARCÍA SANCHOS, JULIO; GÓMEZ-MARTELO GIL DE BERNABÉ, JORGE ...	Tesis	2006-01-01, Publicado Impreso 1 Fichero
<input type="checkbox"/>	Cearsa : compañía europea de aviones regionales.	COSTAS GORDO-PACHECO, MARÍA; GARRIDO GARCÍA, LUIS ANTONIO; LUCÍA DÍAZ, RAÚL; PIÑEIRO GARCÍA, JULIA ...	Tests	2006-01-01, Publicado Impreso 1 Fichero

# Integrate Content Management Systems

Max Planck Institute for Psycholinguistics

Search Site



Home News Events Institute People **Research** Education Resources Experiments

Sitemap | Login



Project Home  
Subprojects  
People  
**Publications**  
Tools  
News  
Events

You are here: Home → Research → Research  
language acquisition → Publications

## Information structure in language Publications

### Journal article

- Pyykkönen, P., & Järvikivi, J. (in press). Causality information in spoken language. *Psychology*. [more >](#)
- Pyykkönen, P., Matthews, D., & Järvikivi, J. (2008). Age effects on the acquisition of negation and finiteness. *Cognitive Processes*. [more >](#)
- Dimroth, C. (2008). Age effects on the acquisition of negation and finiteness. *Journal of Experimental Psychology: Learning, Memory, and Cognition*, 34(1), 117-150. [more >](#)
- Narasimhan, B., & Dimroth, C. (2008). Y

http://preview.mpi.nl - Mozilla Firefox

### Van Berkum, J. (2005). Anticipating upcoming words in discourse: Evidence from ERPs and reading times. *Journal of Experimental Psychology: Learning, Memory, and Cognition*.

We examined whether people can use their knowledge of the wider discourse to anticipate specific upcoming words as a sentence is unfolding. In a experiment, subjects heard Dutch stories that supported the prediction of a specific noun. To probe whether this noun was anticipated at a preceding indefinite article, sentences continued with a gender-marked adjective whose suffix mismatched the upcoming syntactic gender. Prediction-inconsistent adjectives elicited a differential ERP component that disappeared in a no-discourse control experiment. Furthermore, in self-paced reading, prediction-inconsistent adjectives slowed readers down before the noun. Our findings suggest that people can indeed predict upcoming words in fluent discourse, and that these predicted words can immediately begin to participate in incremental operations.

[fulltext >](#)

### Supplementary material

- 01. Dutch item sets for Experiments 1, 2, and 3
- 02. Cloze values of discourse-predictable nouns





Researchers



→ [Search by keywords \(under construction\)](#)

→ [Browse researcher directory](#)

→ [Browse research units](#)

→ [Search by publication \(under construction\)](#)

NIMS Reseachers

SAMURAI

▣ [Search \(under construction\)](#)

Search by keywords (name, research field, etc.)

▣ [Browse researchers directory](#)

Alphabetical listings of all NIMS researchers.

▣ [Browse research units](#)

You can browse research units.

▣ [Search by publication \(under construction\)](#)

You can browse and search researchers via research results, i.e. journal articles, proceedings, patents and so on.

▣ [Page Top](#)



# Image Management



SciDoc.Faces

[Advanced Search](#)

[Home](#) [Pictures](#) [Albums](#) [Statistics](#)

**SORTING** [ORGANIZE](#) [EXPORT](#)

Sorted by  ▲  ▲  ▲ [Sort](#)

You have logged in successfully!

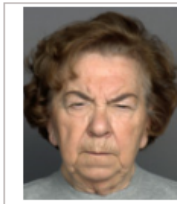
[Back to result list](#)  
**Browse**

of 180 hits

◀◀ Previous | 1 | 2 | 3 | 4 | 5 | Next ▶▶

Go to page  of 15

No Active Album selected.



[View Add](#)



[View Add](#)



[View Add](#)



[View Add](#)



[View Add](#)



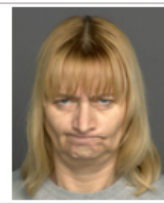
[View Add](#)



[View Add](#)



[View Add](#)



[View Add](#)



[View Add](#)



[View Add](#)



[View Add](#)

of 180 hits

◀◀ Previous | 1 | 2 | 3 | 4 | 5 | Next ▶▶

Go to page  of 15

[HOME](#) [PICTURES](#) [ALBUMS](#)Sort [Organize](#)

## Collection Akiyama

Sorted by [Diamond Elements](#) ▲ [Shape](#) ▲ [Mechanism](#) ▲ [Sort](#)

12 of 132 hits

[◀](#) [◀](#) [Previous](#) | [1](#) | [2](#) | [3](#) | [4](#) | [5](#) | [Next](#) [▶](#) [▶](#)Go to page  of 11

## Collection Akiyama



Published

Album Url

<http://vm29.mpd.l.mpg.de/album/escidoc:468125>

Dates

Date Created: 2010-06-29 at 14:45:46 CEST

Date published: 2010-06-29 at 15:02:25 CEST

Author

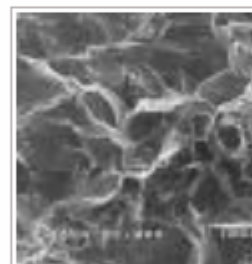
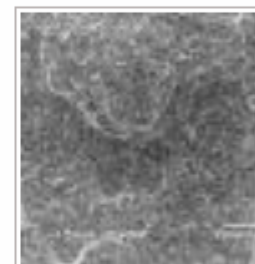
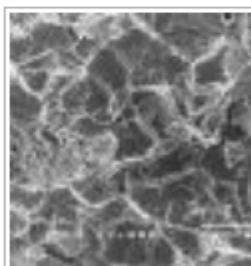
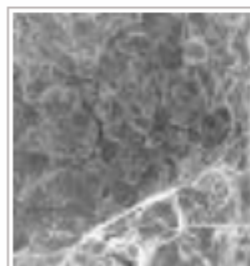
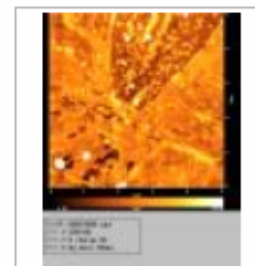
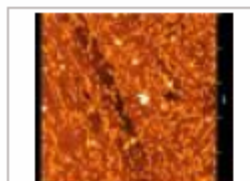
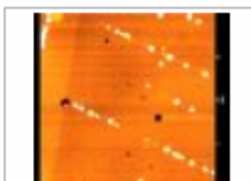
Akiyama, Eiji <sup>1</sup>

Affiliation

<sup>1</sup> National Institute for Materials Science

Description

Collection of Eiji Akiyama

[View](#)[View](#)[View](#)[View](#)[View](#)[View](#)[View](#)[View](#)

HOME IMAGES COLLECTIONS ALBUMS

[Collection Startpage](#) | [Collection metadata](#) | [Metadata profile](#) | [Image Upload](#)

Sort by  ▼

## Fiber Fuse Images


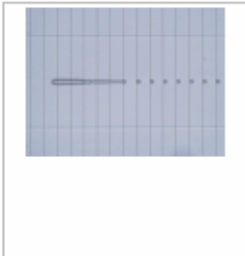
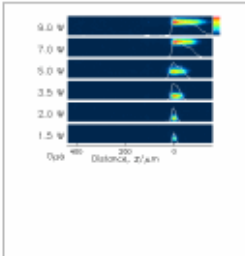

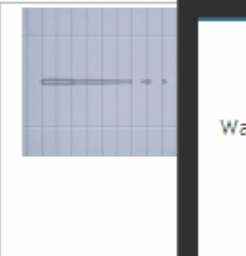
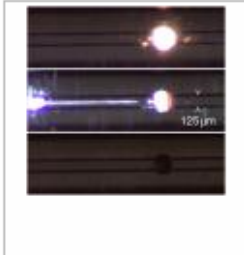

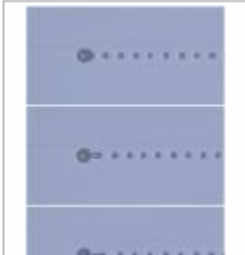


per page

Previous | 1 | Next

go to page  of 1

View selected (13)

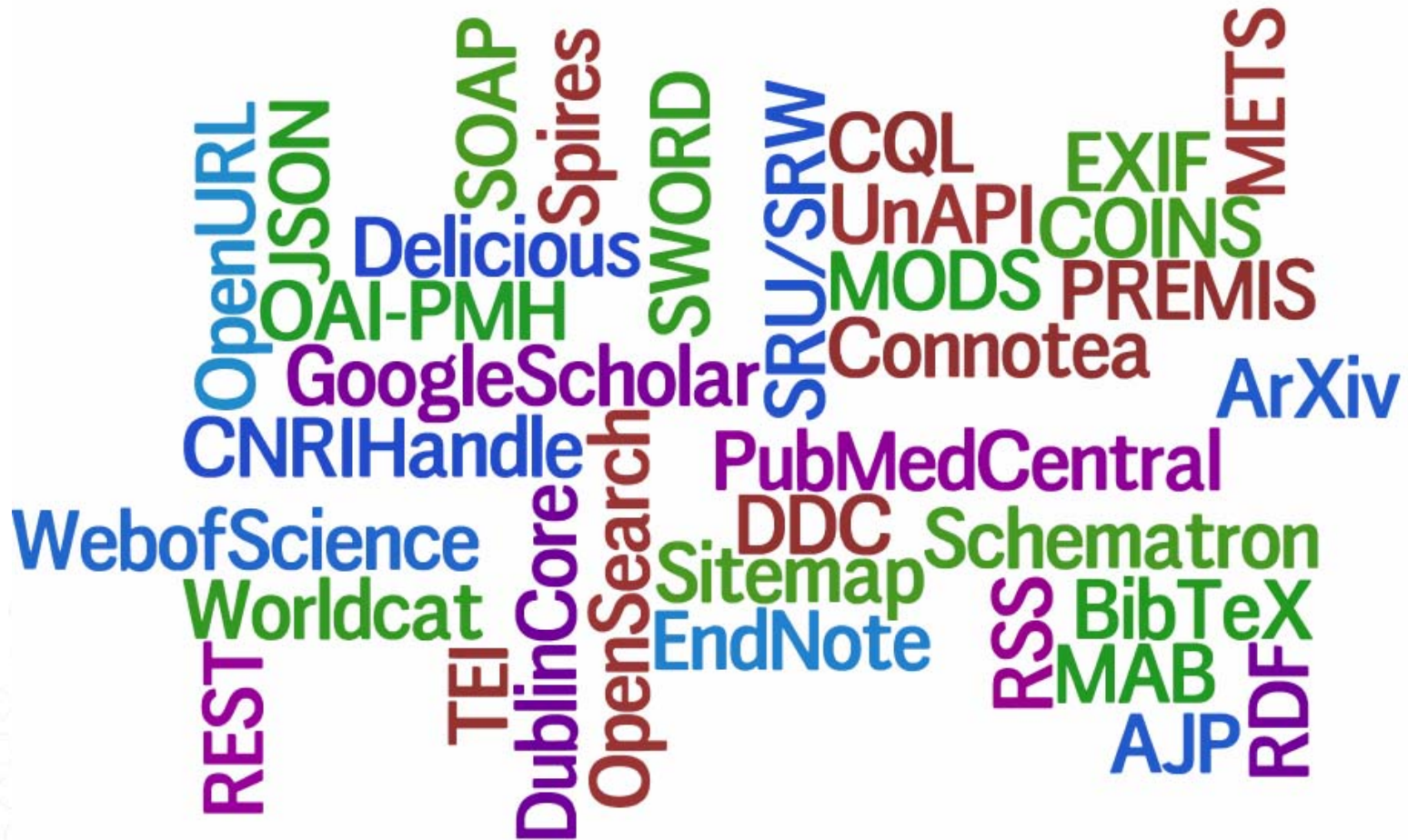
[Clear selected](#)

					<table border="1"> <tbody> <tr> <td>Name</td> <td>IgnitionTails.jpg</td> </tr> <tr> <td>Location</td> <td>140.132/36.0695</td> </tr> <tr> <td>Wavelength [nm]</td> <td>1480.0</td> </tr> <tr> <td>Shape</td> <td>Fiber</td> </tr> <tr> <td>Mechanism</td> <td>Laser-induced damage</td> </tr> <tr> <td>Materials</td> <td>Optical Fiber (SMF-28, Co</td> </tr> <tr> <td>Date</td> <td>Thu Mar 24 01:00:00 CET</td> </tr> <tr> <td>Publication</td> <td><a href="http://pubman.mpd.l.mpg">http://pubman.mpd.l.mpg</a></td> </tr> <tr> <td>Author</td> <td>Todoroki, Shin-ichi ()</td> </tr> <tr> <td>Power [W]</td> <td>9.0</td> </tr> <tr> <td>Element</td> <td>SiO2</td> </tr> <tr> <td>Color</td> <td>Transparent</td> </tr> </tbody> </table>	Name	IgnitionTails.jpg	Location	140.132/36.0695	Wavelength [nm]	1480.0	Shape	Fiber	Mechanism	Laser-induced damage	Materials	Optical Fiber (SMF-28, Co	Date	Thu Mar 24 01:00:00 CET	Publication	<a href="http://pubman.mpd.l.mpg">http://pubman.mpd.l.mpg</a>	Author	Todoroki, Shin-ichi ()	Power [W]	9.0	Element	SiO2	Color	Transparent
Name	IgnitionTails.jpg																												
Location	140.132/36.0695																												
Wavelength [nm]	1480.0																												
Shape	Fiber																												
Mechanism	Laser-induced damage																												
Materials	Optical Fiber (SMF-28, Co																												
Date	Thu Mar 24 01:00:00 CET																												
Publication	<a href="http://pubman.mpd.l.mpg">http://pubman.mpd.l.mpg</a>																												
Author	Todoroki, Shin-ichi ()																												
Power [W]	9.0																												
Element	SiO2																												
Color	Transparent																												
<input checked="" type="checkbox"/> PropagationAnime!	<input checked="" type="checkbox"/> PropagationAnime!	<input checked="" type="checkbox"/> PropagationInsitu.	<input checked="" type="checkbox"/> PropagationAnime!	<input checked="" type="checkbox"/> PropagationA																									
																													
<input checked="" type="checkbox"/> IgnitionSnapshot.j	<input checked="" type="checkbox"/> TerminationSnapst	<input checked="" type="checkbox"/> PropagationFused.	<input checked="" type="checkbox"/> PropagationFused.	<input checked="" type="checkbox"/> IgnitionTails.jpg																									
				<input checked="" type="checkbox"/> TerminationDamag																									

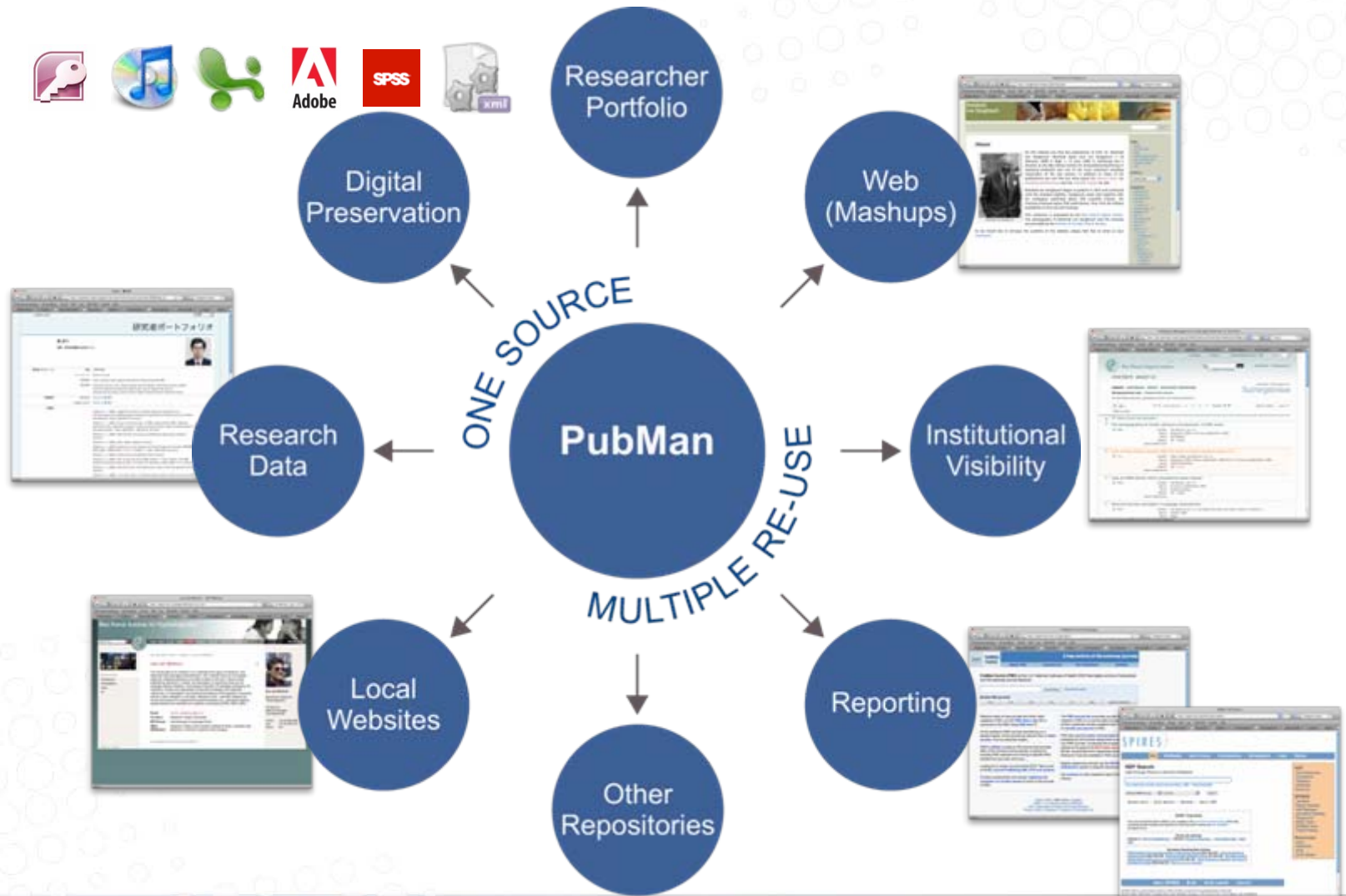


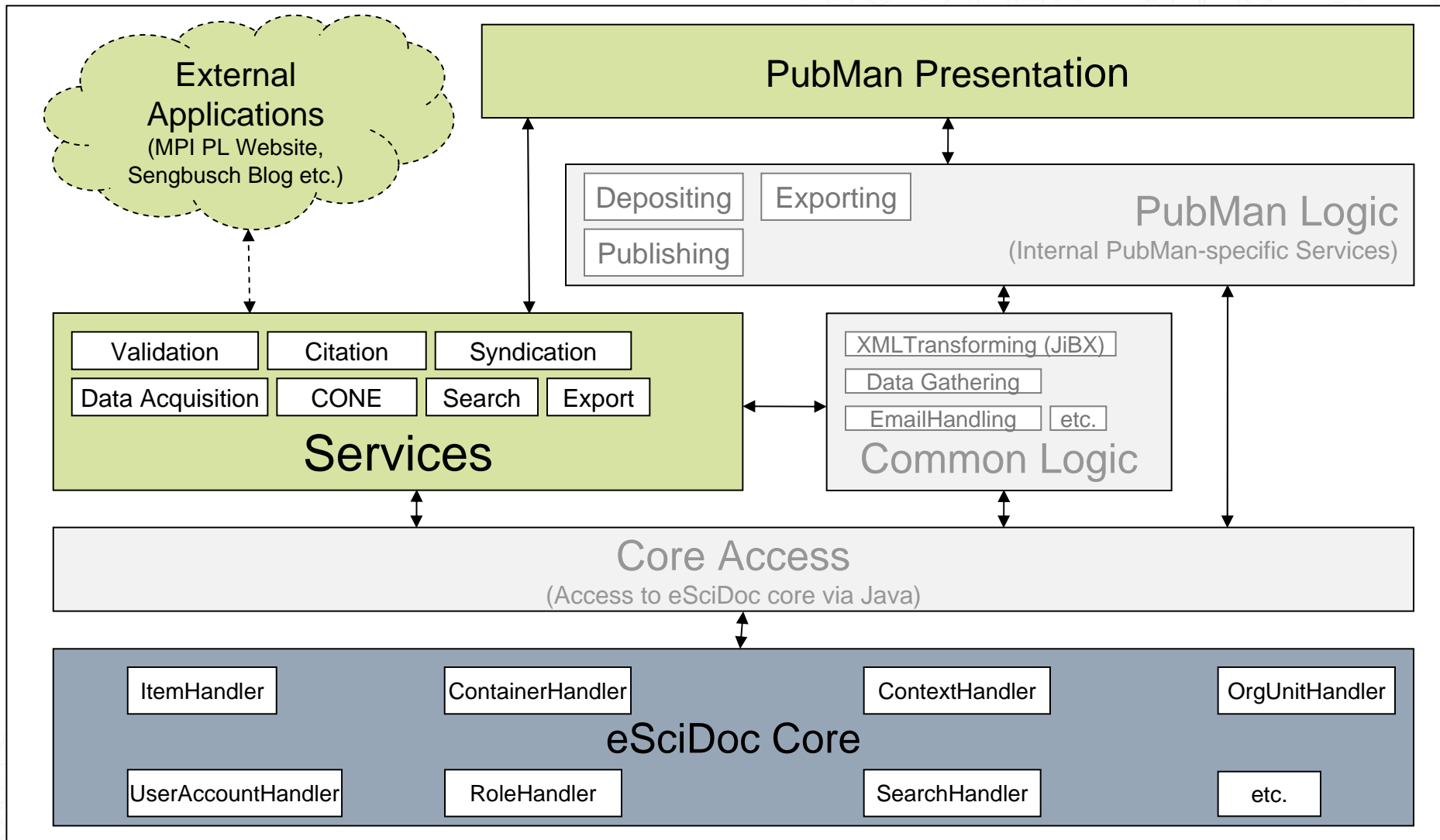


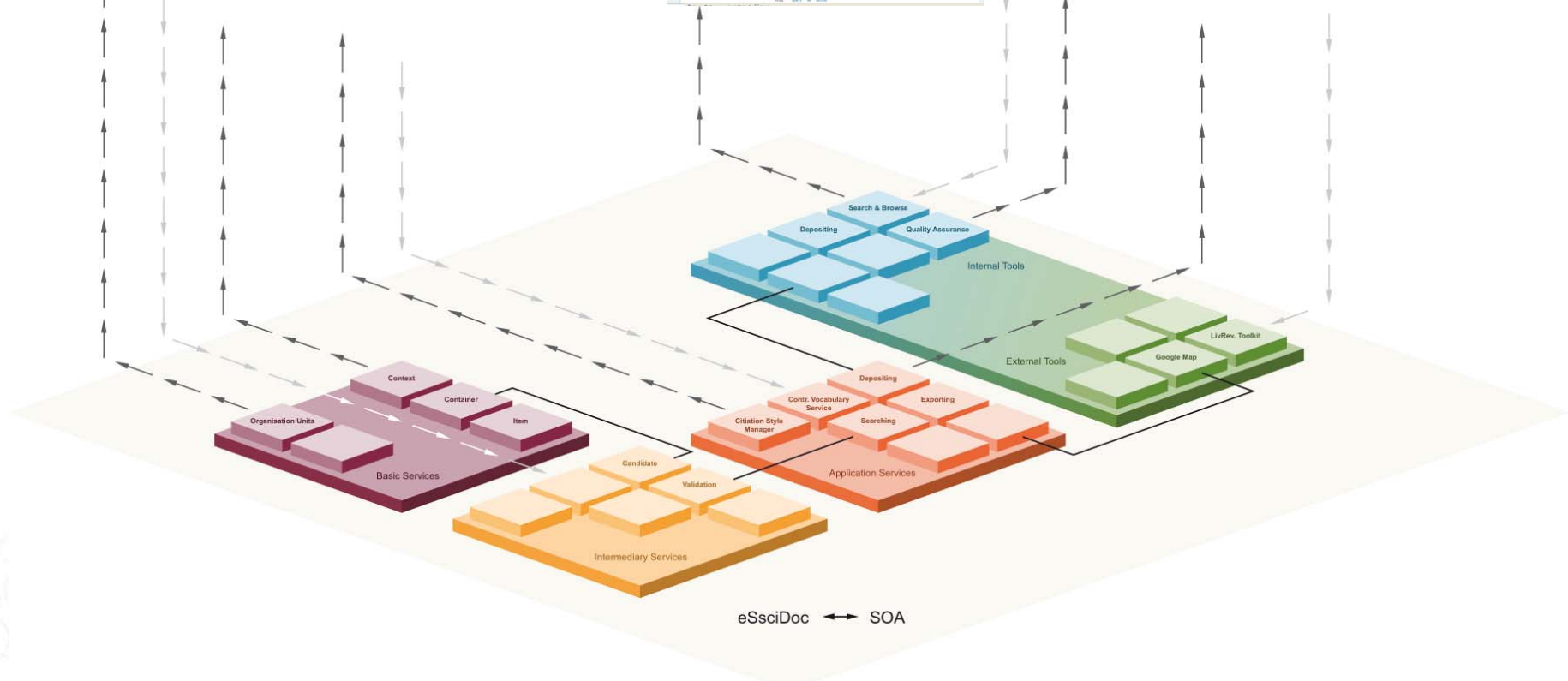
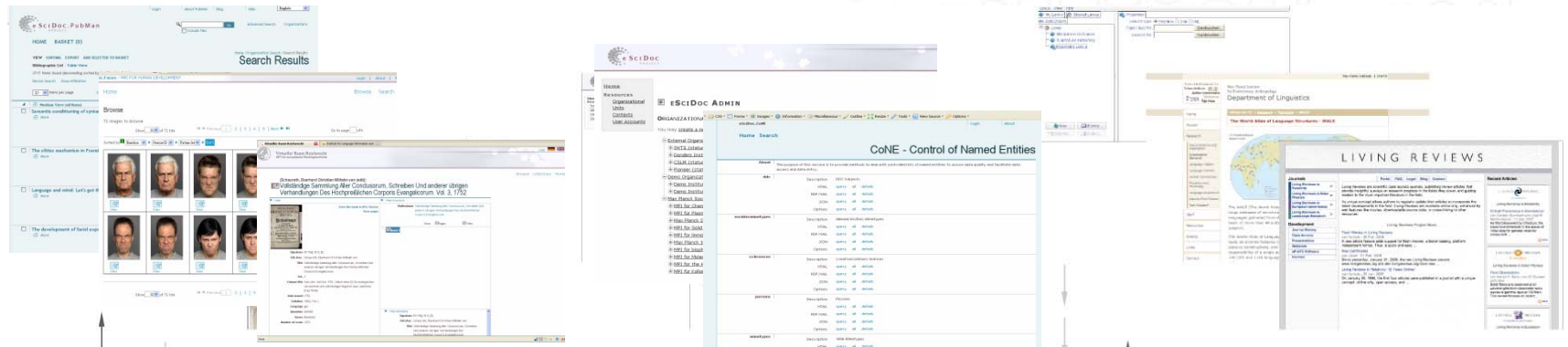
## Selection of Supported Services and Specifications



# Publication Infrastructure



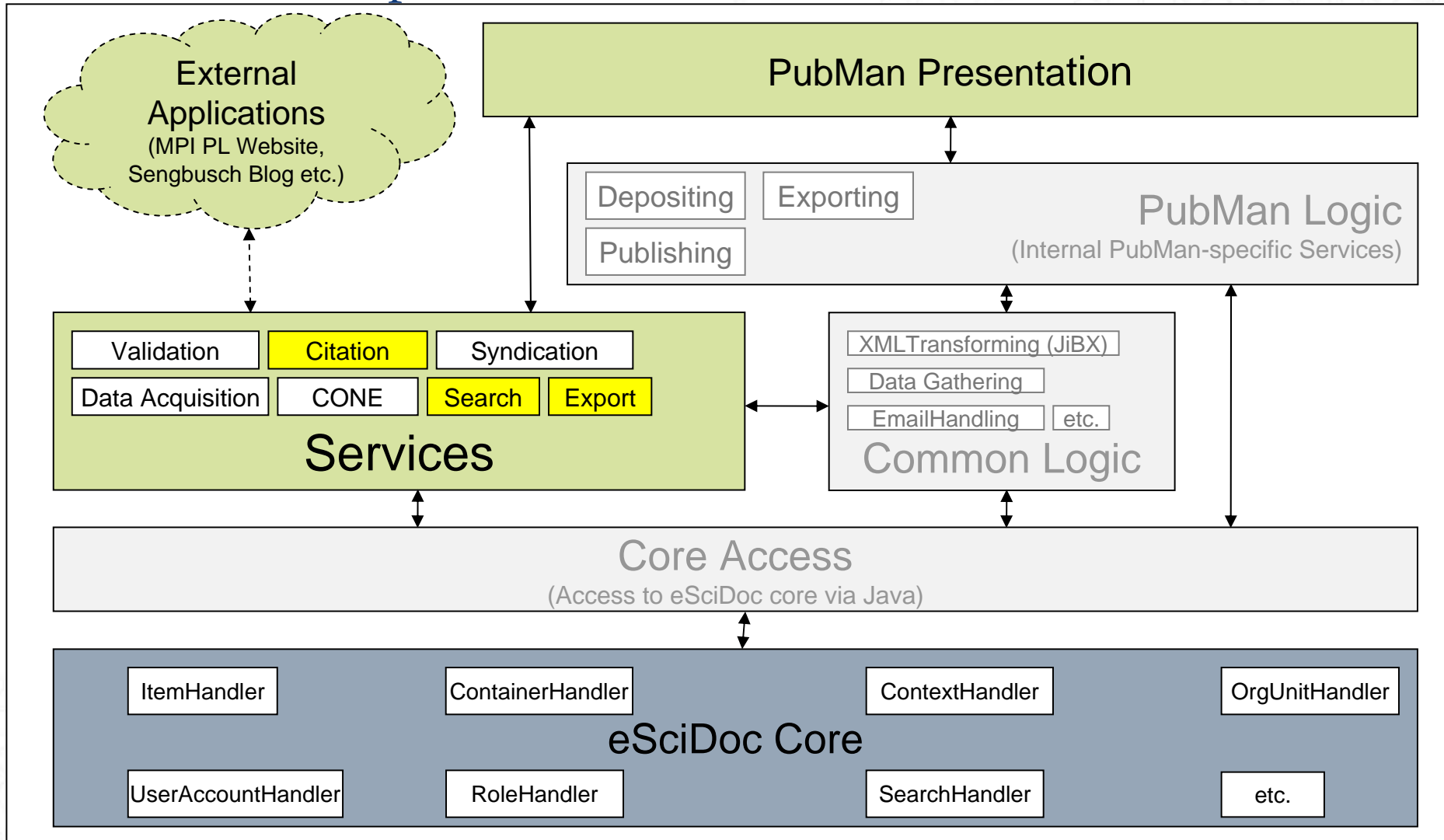








# Search&Export Interface





eSciDocSearchAndExport Service

Description REST Example

# eSciDoc SearchAndExport Service REST Example

## Search Query Form

CQL search query	<input type="text" value="escidoc.metadata=test and escidoc.content-model.objid=escidoc"/>	
Indexes	You can find <a href="#">here</a> all allowed indexes.	
Sorting	Sorting Key	Sorting Order
	<input type="text"/>	<input type="text" value="ascending"/>
Record Span	Start Record	Maximum Records
	<input type="text" value="1"/>	<input type="text" value="50"/>
Export Options	Export Format	Output Format
	<input type="text" value="APA"/>	<input type="text" value="html (styled)"/>
Target URL	<input type="text" value="http://pubman.mpd1.mpg.de/search/SearchAndExport"/>	

hide

## Complete Search URI

http://pubman.mpd1.mpg.de/search/SearchAndExport?cqlQuery=escidoc.metadata=test and escidoc.content-model.objid=escidoc;persistent4&exportFormat=APA&outputFormat=html\_styled&sortKeys=&sortOrder=ascending&startRecord=1&maximumRecords=50

## Search Feeds

The following feeds are available for the search:

- |            |                                   |
|------------|-----------------------------------|
| RSS Feeds  | <a href="#">RSS version 0.9</a>   |
|            | <a href="#">RSS version 0.91N</a> |
|            | <a href="#">RSS version 0.92</a>  |
|            | <a href="#">RSS version 0.93</a>  |
|            | <a href="#">RSS version 0.94</a>  |
|            | <a href="#">RSS version 1.0</a>   |
| ATOM Feeds | <a href="#">Atom, version 0.3</a> |
|            | <a href="#">Atom, version 1.0</a> |

hide

- SearchAndExport Interface
- Search Service
- Citation Manager (APA, AJP, EndNote, Bibtex, eSciDoc XML)
- Export Manager (HTML, PDF, ODT, RTF)

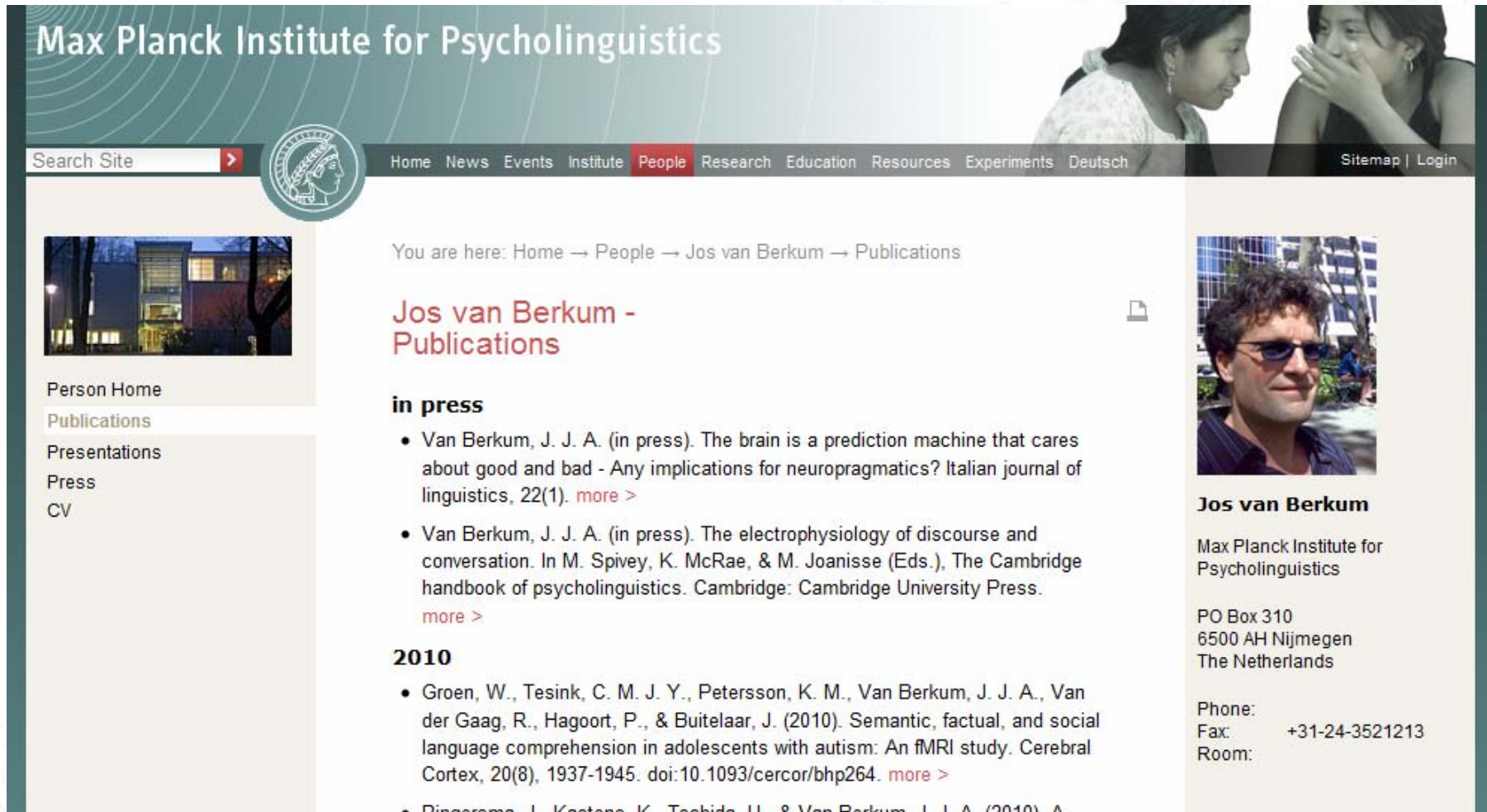
Submit



# HTML Export



```
<html>
<head>
  <meta http-equiv="Content-Type" content="text/html; charset=UTF-8">
</head>
<body>
  <div class="Pubman">
    <p>Bender, P. L., Brillet, A., Ciufolini, I., Cruise, A. M., Cutler, C., Danzmann, K., Folkner, W., Hough, J., McNamara, P. W., Peterseim, M., Robertson, D., Rodrigues, M., Rüdiger, A., Sandford, M., Schäfer, G., Schilling, R., Schutz, B. F., Speake, C. C., Stebbins, R., Sumner, T., et al. <span class="DisplayDateStatus">(1998).</span> <span class="Italic"><i>LISA. Laser Interferometer Space Antenna for the detection and observation of gravitational waves. An international project in the field of Fundamental Physics in Space</i></span>.</p>
    <p>Schutz, B. F., Beig, R., Brügmann, B., Isham, C., Iyer, B., Loll, R., et al. (<localized class="editors">Eds.</localized>). <span class="DisplayDateStatus">(1995).</span> <span class="Italic"><i>Living Reviews in Relativity</i></span>.</p>
    <p>De Goede, D., Van Alphen, P., Mulder, E., Blokland, Y., Kerstholt, J., & Van Berkum, J. J. A. <span class="DisplayDateStatus">(2010).</span> <span class="Italic"><i>The effect of mood on anticipation in language comprehension: An ERP study</i></span>.</p>
    <p>Levelt, W. J. M., & Flores d'Arcais, G. B. (<localized class="editors">Eds.</localized>). <span class="DisplayDateStatus">(2008).</span> <span class="Italic"><i>Studies in the perception of language</i></span>.</p>
    <p>Submission, T. <span class="DisplayDateStatus">(2010).</span> <span class="Italic"><i>Test Submission</i></span>.</p>
    <p>Van Berkum, J. J. A., Van den Brink, D., Tesink, C., Kos, M., & Hagoort, P. <span class="DisplayDateStatus">(n.d.).</span> <span class="Italic"><i>When do listeners think about the speaker? Neural evidence for rapid voice-based speaker modelling</i></span>.</p>
    <p>Chen, A. <span class="DisplayDateStatus">(2008).</span> <span class="Italic"><i>The acquisition of intonation as a focus-marker in Dutch</i></span>.</p>
    <p>Chen, A. <span class="DisplayDateStatus">(2008).</span> <span class="Italic"><i>Shaping the intonation of Wh-questions: information structure and beyond</i></span>.</p>
    <p>Levelt, W. J. M. <span class="DisplayDateStatus">(1989).</span> Working models of perception: five general issues. In <span class="Italic"><i>Working models of perception</i></span>.</p>
    <p>Chen, A. <span class="DisplayDateStatus">(2008).</span> <span class="Italic"><i>Intonation in reference tracking in second language learners</i></span>.</p>
    <p>Dediu, D. <span class="DisplayDateStatus">(2007).</span> <span class="Italic"><i>Non-spurious correlations between genetic and linguistic diversities in the context of human evolution</i></span>.</p>
```

## Use in external Website



The screenshot shows the website for the Max Planck Institute for Psycholinguistics. The header features the institute's name and a navigation menu with items like Home, News, Events, Institute, People, Research, Education, Resources, Experiments, and Deutsch. A search bar is located on the left. The main content area displays a breadcrumb trail: 'You are here: Home → People → Jos van Berkum → Publications'. Below this, the title 'Jos van Berkum - Publications' is shown. A list of publications follows, including two 'in press' entries and two from 2010. A sidebar on the left contains a navigation menu with links for Person Home, Publications, Presentations, Press, and CV. On the right, there is a profile section for Jos van Berkum, featuring a photo, his name, affiliation with the Max Planck Institute for Psycholinguistics, and contact information including a phone number and fax number.


### Max Planck Institute for Psycholinguistics

Search Site  

Home News Events Institute **People** Research Education Resources Experiments Deutsch [Sitemap](#) | [Login](#)

You are here: Home → People → Jos van Berkum → Publications

## Jos van Berkum - Publications




### in press


- Van Berkum, J. J. A. (in press). The brain is a prediction machine that cares about good and bad - Any implications for neuropragmatics? *Italian journal of linguistics*, 22(1). [more >](#)
- Van Berkum, J. J. A. (in press). The electrophysiology of discourse and conversation. In M. Spivey, K. McRae, & M. Joanisse (Eds.), *The Cambridge handbook of psycholinguistics*. Cambridge: Cambridge University Press. [more >](#)

### 2010

- Groen, W., Tesink, C. M. J. Y., Petersson, K. M., Van Berkum, J. J. A., Van der Gaag, R., Hagoort, P., & Buitelaar, J. (2010). Semantic, factual, and social language comprehension in adolescents with autism: An fMRI study. *Cerebral Cortex*, 20(8), 1937-1945. doi:10.1093/cercor/bhp264. [more >](#)
- Ringersma, J., Kastens, K., Tschida, H., & Van Berkum, J. J. A. (2010). A



Person Home  
Publications  
Presentations  
Press  
CV



### Jos van Berkum

Max Planck Institute for Psycholinguistics

PO Box 310  
6500 AH Nijmegen  
The Netherlands

Phone:  
Fax: +31-24-3521213  
Room:





qa

🔍

Include files

[Advanced Search](#)

[Browse](#)

**START BASKET (0)**

Start  
**Start**

## PubMan 6.1.12 - an eSciDoc solution for publication data management

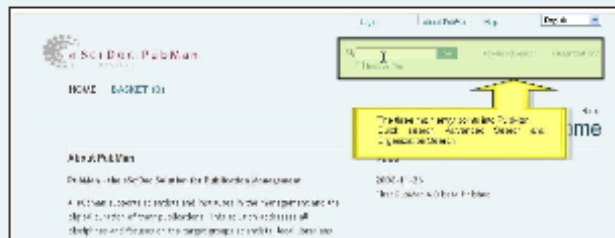
Provide persistent access to your papers and supplementary material!  
Compile your papers in your personal "Researcher Portfolio"  
Benefit from the MPG service for long-term archiving!

[Read more](#) | [Support](#)

Search for publications here

... or browse through different categories.

## Short PubMan Introduction Video



## Last Released Items

### Early word learning in nine-month-olds: Dynamics of picture-word priming

von Cutler, Anne - vor 8 Stunden gefunden

How do infants learn words? Most studies focus on novel word learning to address this question. Only a few studies concentrate ...

### Syntactic priming in German-English bilinguals during sentence comprehension

von Indefrey, Peter - vor 8 Stunden gefunden

A longstanding question in bilingualism is whether syntactic information is shared between the two language processing systems. ...

### High-throughput analysis of promoter occupancy reveals direct neural targets of FOXP2, a gene mutated in speech and language disorders

von Fisher, Simon E. - vor 8 Stunden gefunden

We previously discovered that mutations of the human FOXP2 gene cause a monogenic communication disorder, primarily ...

### Functional genetic analysis of mutations



qa

Search bar with 'Go' button and 'Include files' checkbox

Advanced Search

Browse

START BASKET (0)

VIEW SORT EXPORT ADD SELECTED TO BASKET

Bibliographic List | Table View

3180 Items found (descending sorted by Modification Date)

25 items per page

Navigation buttons: Previous, 1, 2, 3, 4, 5, 6, 7, Next

Go to page of 128

Start > Search Results  
Search Results

Medium View (all Items)

Test cone entries met mpi affiliatin

More

Creators: Cutler, Anne  
Dates: Accepted: 2010  
Genre: Journal Article  
Files: -  
Locators: -

Test add multiple author

More

Creators: Bauer, Jack; Noelle, Fritz; Boosen, Martin; Sowieso, Irgendwie  
Dates: Published in Print: 1923-02-01  
Genre: Conference report  
Files: -  
Locators: -

journal article test 6.1.12 storage index test

More

Creators: Liepert, Caroline; Abel, Christian; Damian, Markus F.; MPI for Astrophysics, Max Planck Society



Published Online: 2010-09-18 | Published in Print: 2010-07-25

Genre Journal Article  
Files 2 Files  
Locators 1 Locator

**A coding scheme for question-response sequences in conversation**

Less

Creators Stivers, Tanya; Enfield, N. J.  
Dates Published Online: 2010-1016 | Published in Print: 2010  
Genre Journal Article  
Files 1 File  
Locators -

Publishing info -  
Event Title -  
Source Genre Journal  
Source Title Journal of Pragmatics  
Volume / Issue 42 (10)  
Start / End Page 2620 - 2626  
Sequence Number -  
Source Publ. Info Amsterdam : North-Holland  
Fulltext Search Hits ... with lexical, morphological, syntactic or prosodic marking appropriate to the **language**. Thus, rhetorical...  
... too little was known about **language** specific prosodic marking to code this separately. However, for languages...

**Search Test**

More

Creators Bauernfeind, René; Hellwig, Frauke M.; AKIYAMA, Eiji; Fowler, Daniel Jon ...  
Dates Created: 1871-01-30 | Modified: 1871-01-30 | Submitted: 1871-01-30 | Accepted: 1871-01-30 | Published Online: 1871-01-30 | Published in Print: 2010-07-07  
Genre Thesis  
Files 2 Files  
Locators 1 Locator

**Cassini-Huygens and beyond - tools for dust astronomy**

More

Creators Srama, Ralf  
Dates Accepted: 2009-11



qa



Go

[Advanced Search](#)

[Browse](#)

Include files

START BASKET (0)

[Start](#) > [Search Results](#) > [Choose Browse By](#)

# Choose Browse By

## Organizations

Description Browse by organizational unit names and view the corresponding items.

## Persons

Description Browse by person names and view the corresponding items.

## Subjects

[ddc](#) Dewey Decimal Classification

[mpipks](#) MPI PKS Classification

## Year

Description Browse by year and view the corresponding items.





- Schreiber, Emil (Laser Interferometry & Gravitational Wave Astronomy, AEI-Hannover, MPI for Gravitational Physics, Max Planck Society) 
- Schreiber, Erich (External Organizations) 
- Schrempel, M. (Laser Interferometry & Gravitational Wave Astronomy, AEI-Hannover, MPI for Gravitational Physics, Max Planck Society) 
- Schröder, E. (External Organizations) 
- Schröder, Ernst (External Organizations) 
- Schubert, Christian (Quantum Gravity & Unified Theories, AEI-Golm, MPI for Gravitational Physics, Max Planck Society) 
- Schubert, C. (Quantum Gravity & Unified Theories, AEI-Golm, MPI for Gravitational Physics, Max Planck Society) 
- Schubert, Grit (Department of Genetics and Evolution, MPI for Chemical Ecology, Max Planck Society) 
- Schuck, Stefan (Department of Molecular Ecology, Prof. I. T. Baldwin, MPI for Chemical Ecology, Max Planck Society) 
- Schüler, Göde (Department of Bioorganic Chemistry, Prof. Dr. W. Boland, MPI for Chemical Ecology, Max Planck Society) 
- Schuller, Frederic P. (Quantum Gravity & Unified Theories, AEI-Golm, MPI for Gravitational Physics, Max Planck Society) 
- Schultz, H. (External Organizations) 
- Schulze, Birgit (Department of Bioorganic Chemistry, Prof. Dr. W. Boland, MPI for Chemical Ecology, Max Planck Society) 
- Schuman, Meredith (Department of Molecular Ecology, Prof. I. T. Baldwin, MPI for Chemical Ecology, Max Planck Society) 
- Schuppe, E. (External Organizations) 
- Schütte, Dirk (Laser Interferometry & Gravitational Wave Astronomy, AEI-Hannover, MPI for Gravitational Physics, Max Planck Society) 
- Schutz, Bernard F. (Astrophysical Relativity, AEI-Golm, MPI for Gravitational Physics, Max Planck Society) 
- Schutz, B. F. (Astrophysical Relativity, AEI-Golm, MPI for Gravitational Physics, Max Planck Society) 
- Schwachtje, Jens (Department of Molecular Ecology, Prof. I. T. Baldwin, MPI for Chemical Ecology, Max Planck Society) 
- Schwanitz, F. (MPI für Züchtungsforschung, Max-Planck-Gesellschaft) 
- Schwartzberg, Ezra (Department of Biochemistry, Prof. J. Gershenzon, MPI for Chemical Ecology, Max Planck Society) 
- Schwarze, P. (Kaiser Wilhelm Institut für Züchtungsforschung, Kaiser-Wilhelm-Gesellschaft) 
- Segaert, Katrien (Neurobiology of Language Group, MPI for Psycholinguistics, Max Planck Society) 
- SEGAWA, Hiroyo (Glass Group, Exploratory Nanomaterials Research Laboratory, National Institute for Materials Science) 
- Seifert, F. (Laser Interferometry & Gravitational Wave Astronomy, AEI-Hannover, MPI for Gravitational Physics, Max Planck Society) 



- Schreiber, Emil (Laser Interferometry & Gravitational Wave Astronomy, AEI-Hannover, MPI for Gravitational Physics, Max Planck Society)
- Schreiber, Erich (External Organizations)
- Schrempel, M. (Laser Interferometry & Gravitational Wave Astronomy, AEI-Hannover, MPI for Gravitational Physics, Max Planck Society)
- Schröder, E. (External Organizations)
- Schröder, Ernst (External Organizations)
- Schubert, Christian (Quantum Gravity & Unified Theories, AEI-Golm, MPI for Gravitational Physics, Max Planck Society)
- Schubert, C. (Quantum Gravity & Unified Theories, AEI-Golm, MPI for Gravitational Physics, Max Planck Society)
- Schubert, Grit (Department of Genetics and Evolution, MPI for Chemical Ecology, Max Planck Society)
- Schuck, Stefan (Department of Molecular Ecology, Prof. I. T. Baldwin, MPI for Chemical Ecology, Max Planck Society)
- Schüler, Göde (Department of Bioorganic Chemistry, Prof. Dr. W. Boland, MPI for Chemical Ecology, Max Planck Society)
- Schuller, Frederic P. (Quantum Gravity & Unified Theories, AEI-Golm, MPI for Gravitational Physics, Max Planck Society)
- Schultz, H. (External Organizations)
- Schulze, Birgit (Department of Bioorganic Chemistry, Prof. Dr. W. Boland, MPI for Chemical Ecology, Max Planck Society)
- Schuman, Meredith (Department of Molecular Ecology, Prof. I. T. Baldwin, MPI for Chemical Ecology, Max Planck Society)
- Schuppe, E. (External Organizations)
- Schütte, Dirk (Laser Interferometry & Gravitational Wave Astronomy, AEI-Hannover, MPI for Gravitational Physics, Max Planck Society)
- Schutz, Bernard F. (Astrophysical Relativity, AEI-Golm, MPI for Gravitational Physics, Max Planck Society)
- Schutz, B. F. (Astrophysical Relativity, AEI-Golm, MPI for Gravitational Physics, Max Planck Society)
- Schwachtje, Jens (Department of Molecular Ecology, Prof. I. T. Baldwin, MPI for Chemical Ecology, Max Planck Society)
- Schwanitz, F. (MPI für Züchtungsforschung, Max-Planck-Gesellschaft)
- Schwartzberg, Ezra (Department of Biochemistry, Prof. J. Gershenzon, MPI for Chemical Ecology, Max Planck Society)
- Schwarze, P. (Kaiser Wilhelm Institut für Züchtungsforschung, Kaiser-Wilhelm-Gesellschaft)
- Segaert, Katrien (Neurobiology of Language Group, MPI for Psycholinguistics, Max Planck Society)
- SEGAWA, Hiroyo (Glass Group, Exploratory Nanomaterials Research Laboratory, National Institute for Materials Science)
- Seifert, F. (Laser Interferometry & Gravitational Wave Astronomy, AEI-Hannover, MPI for Gravitational Physics, Max Planck Society)

# Researcher Portfolio

**Prof. Schutz, Bernard F.**

Astrophysical Relativity, AEI-Golm, MPI for Gravitational Physics, Max Planck Society



## Researcher Profile

### Current Position

Director of the Astrophysical Relativity Department of the AEI

### Researcher Homepage(s)

[Member Page AEI](#)

### Researcher ID

<http://qa-pubman.mpd.mpg.de:8080/cone/persons/resource/persons20673>

### Research Fields

black holes and neutron stars

## External references

### WorldCat

[Search for Schutz, Bernard F.](#)

### Google Scholar

[Search for Schutz, Bernard F.](#)

## Publications

Kausch, H., Schutz, B. F., & Amaro-Seoane, P. (2010). *JUS 2. Zeitschrift für das gesamte Handelsrecht und Wirtschaftsrecht*, 3(17), 2-52. [[PubMan](#)]

Senft, G. (2010). Endnote Test. In B. F. Schutz (Ed.), *Neue Zeitschrift für Miet- und Wohnungsrecht*. [[PubMan](#)]

Abbott, B., Abbott, R., Adhikari, R., Ajith, P., Allen, B., Allen, G., Amin, R., Anderson, D. P., Anderson, S. B., Anderson, W. G., Arain, M., Araya, M., Armandula, H., Armor, P., Aso, Y., Aston, S., Aufmuth, P., Aulbert, C., Babak, S., Ballmer, S., et al. (2009). The Einstein@Home search for periodic gravitational waves in early 55 LIGO data. *Physical Review D*, 80(2). doi:10.1103/PhysRevD.80.042003. [[PubMan](#)]

Abbott, B. P., Abbott, R., Adhikari, R., Ajith, P., Allen, B., Allen, G., Amin, R. S., Anderson, S. B.,



qa

Search bar with 'Go' button and 'Include files' checkbox

Advanced Search

Browse

START MY ITEMS QA WORKSPACE SUBMISSION BASKET (0)

Start  
Start

WELCOME TO PUBMAN -  
WHAT DO YOU WANT TO WORK ON TODAY?



### Submission

Enter a new Publication to PubMan?  
... by using the [Easy Submission](#)  
... by [Import](#)  
... by using the [Full Submission](#)



### My Items

...finish your data [submissions](#) or [check](#) if your items have been already released to the public.



### QA Workspace

... [moderate](#) or [edit](#) items entered for your context.

### Help and further information

Helpful videos

- video on [how to submit data](#)

### Last Released Items

#### Early word learning in nine-month-olds: Dynamics of picture-word priming

von Cutler, Anne - vor 8 Stunden gefunden

How do infants learn words? Most studies focus on novel word learning to address this question. Only a few studies concentrate ...

#### Syntactic priming in German-English bilinguals during sentence comprehension

von Indefrey, Peter - vor 8 Stunden gefunden

A longstanding question in bilingualism is whether syntactic information is shared between the two language processing systems. ...

#### High-throughput analysis of promoter occupancy reveals direct neural targets of FOXP2, a gene mutated in speech and language disorders

von Fisher, Simon E. - vor 8 Stunden gefunden

We previously discovered that mutations of the human FOXP2 gene cause a monogenic communication disorder, primarily ...

#### Functional genetic analysis of mutations





qa

🔍

Include files

[Advanced Search](#)

[Browse](#)

[START](#) [MY ITEMS](#) [QA WORKSPACE](#) [SUBMISSION](#) [BASKET \(0\)](#)

[Easy](#) [Full](#) [Fetch/Import](#) [Multiple Import](#) [Import Workspace](#)

[Start](#) > Choose Submission Method

# Submission Method

## Easy

**Description** Using the easy submission one can enter stepwise information on a publication. At the end of the wizard one can save the item or switch to the full submission mask to add more details.

## Full

**Description** The full submission offers a genre specific entry mask for entering reference data. Additionally one or more full texts can be uploaded and information on externally stored data (e.g. Supplementary Material) can be specified.

## Fetch/Import

**Description** This method allows you to import a single BibTeX reference or it allows you to fetch metadata and full text(s) from other systems like arXiv or PubMed Central.

## Multiple Import

**Description** This method allows you to import multiple items in a structured format (e.g. EndNote, BibTex).



PROJECT

Include files

START MY ITEMS QA WORKSPACE SUBMISSION BASKET (0)

Start > Choose Submission Method > Easy Submission

# Easy Submission

Easy Full Fetch/Import Multiple Import Import Workspace

This item will be part of Non MPI publications by MPI Psycholinguistics staff.

Step 1

Step 2

Step 3

Persons & Organizations

[Add multiple](#)

Role Type Family name Given name Org.ni

Author Person kas



Organization

1

hidePersons & Organizations

Content

Free keywords

Classified Subject

Type

Abstract

- AIZAWA, Takashi (Boride Group, Exploratory Nanomaterials Research Laboratory, National Institute for Materials Science)
- KASAHARA, Akira (Micro-nano Materials Engineering Group, Materials Reliability Center, National Institute for Materials Science)
- KASAI, Shinya (Spintronics Group, Magnetic Materials Center, National Institute for Materials Science)
- Kastens, Karin (Donders Institute for Brain, Cognition and Behaviour, External Organization)
- Kastens, Karin (Library, MPI for Psycholinguistics, Max Planck Society)**
- KIYOSHI, Tsukasa (Magnet Development Group, Superconducting Materials Center, National Institute for Materials Science)
- KURODA, Takashi (Nano Photonics Group, Quantum Dot Research Center, National Institute for Materials Science)
- Mittapalli, Omprakash (Department of Molecular Ecology, Prof. I. T. Baldwin, MPI for Chemical Ecology, Max Planck Society)
- MOCHIKU, Takashi (Physical Properties Group, Superconducting Materials Center, National Institute for Materials Science)
- Mossavi, Kasem (Laser Interferometry & Gravitational Wave Astronomy, AEI-Hannover, MPI for Gravitational Physics)
- Mossavi, K. (Laser Interferometry & Gravitational Wave Astronomy, AEI-Hannover, MPI for Gravitational Physics)
- NAKANISHI, Takashi (Macromolecules Group, Organic Nanomaterials Center, National Institute for Materials Science)
- NAKA, Takashi (Basic Research Group, Exploratory Materials Research Laboratory for Reliability and Quality Control, National Institute for Materials Science)
- NISHIMURA, Chikashi (Fuel Cell Materials Center, National Institute for Materials Science)
- Pandey, Shree Prakash (Department of Molecular Ecology, Prof. I. T. Baldwin, MPI for Chemical Ecology, Max Planck Society)
- SEKIGUCHI, Takashi (Nano device characterization Group, Advanced Electronic Materials Center, National Institute for Materials Science)
- TAKEDA, Takashi (Nitride Particle Group, Nano Ceramics Center, National Institute for Materials Science)

\* Mandatory field

[Back](#)



Total no. of pages

Table of content

Review type

Identifier

Type of identifier

Identifier value



hide Details

Source 1

Genre



Title



Persons & Organizations

Classical and quantum **gravity**; Institute of Physics, Bristol, U.K.

Role: General Relativity and **Gravitation**; Kluwer Academic Publishers [etc.], Dordrecht, etc.

Living Reviews in Relativity; By the Albert-Einstein-Institut, Max-Planck-Institut für **Gravitationsphysik**, Potsdam, Germany

Micro**gravity** Science and Technology : International Journal for Micro**gravity** Research and Applications; C. Hanser, Munich

Organization

Address

1



Details of Source

Volume

Total no. of pages

Publisher

Place



hide Details

Source1

Genre

Journal



Title

Living Reviews in Relativity



Persons & Organizations

Role

Type

Family name

Given name

Org.ni

-

Person

1



Organization

Address

1



Details of Source

Volume

Total no. of pages

Publisher

By the Albert-Einstein-  
Institut, Max-Planck-Institut  
für Gravitationsphysik

Place

Potsdam, German

Identifier

ISSN

1433-8351



CoNE

http://qa-pubman.mpdl.mpg.de:8080/



Issue

Start Page

Endpage

Sequence Number

hide Source1

\* Check for additional mandatory fields





**Easy** **Full** **Fetch/Import** **Multiple Import** **Import Workspace**

**Fetch from Source** | **Upload BibTeX file**

This item will be part of Publications of the MPI for Psycholinguistics.

## Fetch/Import

**Fetch/Import**

Fetch from Source

Source

Identifier

- arXiv
- BioMed Central
- Spines
- eSciDoc
- PubMedCentral
- arXiv

Fetch file(s)

All available

None

Cancel

Fetch

**START** **MY ITEMS** **QA WORKSPACE** **SUBMISSION BASKET (0)**

**Easy** **Full** **Fetch/Import** **Multiple Import** **Import Workspace**

This item will be part of Publications of the MPI for Gravitational Physics.

## Multiple Import

**Multiple Import**

Import format

- EndNote
- EndNote
- BibTex
- RIS
- WOS
- MAB
- eDoc
- eSciDoc
- EndNote ICE
- eDoc AEI

Upload file

Durchsuchen...

Cancel

Import



qa

Search bar with magnifying glass icon, a text input field, and a blue 'Go' button. Below the input field is a checkbox labeled 'Include files'.

Advanced Search

Browse

START MY ITEMS QA WORKSPACE SUBMISSION BASKET (0)

Start > Choose Submission Method > Easy Submission

Easy Full Fetch/Import Multiple Import Import Workspace

Fetch from Source | Upload BibTeX file

This item will be part of Non MPI publications by MPI Psycholinguistics staff.

# Fetch/Import

Fetch/Import

Fetch from Source

Source

Dropdown menu with 'arXiv' selected and a downward arrow.

Identifier

Text input field containing 'arXiv:1009.1402'.

Fetch file(s)

PDF

All available

None

Cancel

Fetch



Persons & Organizations

[Add multiple](#)

Role	Type	Family name	Given name	Org.ni	
Author	Person	Amaro-Seoane	Pau		+ -
Author	Person	Schutz	Bernard		+ -
Author	Person	Sopuerta	Carlos F.		+ -

Organization	Address	
1		+ -

[hidePersons & Organizations](#)

Content

Free keywords

Astrophysics, Cosmology and Extragalactic  
Astrophysics, astro-ph.CO, Astrophysics, Galaxy  
Astrophysics, astro-ph.GA, General Relativity and

Classified Subject

Type	Value	
		+ -

Abstract

GW Notes was born from the  
need for a journal where the  
distinct communities

+ -

[hide Content](#)

Details

Language of Publication

+ -

\*

Date published in print	Date published online	Date accepted
Date submitted	Date modified	Date created
		2010-09-07

Total no. of pages

104 pages, Edit

Table of content



include files

START MY ITEMS QA WORKSPACE SUBMISSION BASKET (0)

Choose Collection > Multiple Import > Advanced Search

# Advanced Search

Word or Phrase	Search Term: <input type="text"/> <input type="radio"/> Title <input type="radio"/> Keywords <input checked="" type="radio"/> Any Field <input type="radio"/> Any & full text <input type="button" value="AND"/>
Person	Person <input type="text"/> <input type="button" value="Check all"/> <input type="checkbox"/> Author <a href="#">more..</a> <input type="button" value="AND"/>
Date	From: <input type="text" value="2009"/> To: <input type="text"/> <input type="button" value="Check all"/> <input checked="" type="checkbox"/> published in print <input checked="" type="checkbox"/> published online <input checked="" type="checkbox"/> accepted <input checked="" type="checkbox"/> submitted <input checked="" type="checkbox"/> modified <input checked="" type="checkbox"/> created <input type="button" value="AND"/>
Genre	<input type="button" value="show Genre"/>
Organization	Organization <input type="text" value="MPI for Gravitational Physics"/> <a href="#">select</a> <input type="button" value="hide Organization"/> <input type="button" value="AND"/>
Files & Locators	Files & Locators: <input type="text" value="with file(s"/> Visibility: <input type="text" value="public"/> <input type="checkbox"/> has embargo date Content category: <input type="text" value="Any fulltext"/> <input type="checkbox"/> exclude category <input type="button" value="hide Files &amp; Locators"/> <input type="button" value="AND"/>

Content & Details





Thanks for your Attention

[www.escidoc.org](http://www.escidoc.org)