



MAX PLANCK
digital library

Building Evidence in MPG Information Provision – Back-Office Services and Data Analyses

Goethe-Institut Japan: Study Tour German Libraries. Visit to the
Max Planck Digital Library. Munich, November 27th, 2009

Margit Palzenberger, MS
Max Planck Digital Library
Scientific Information Provision

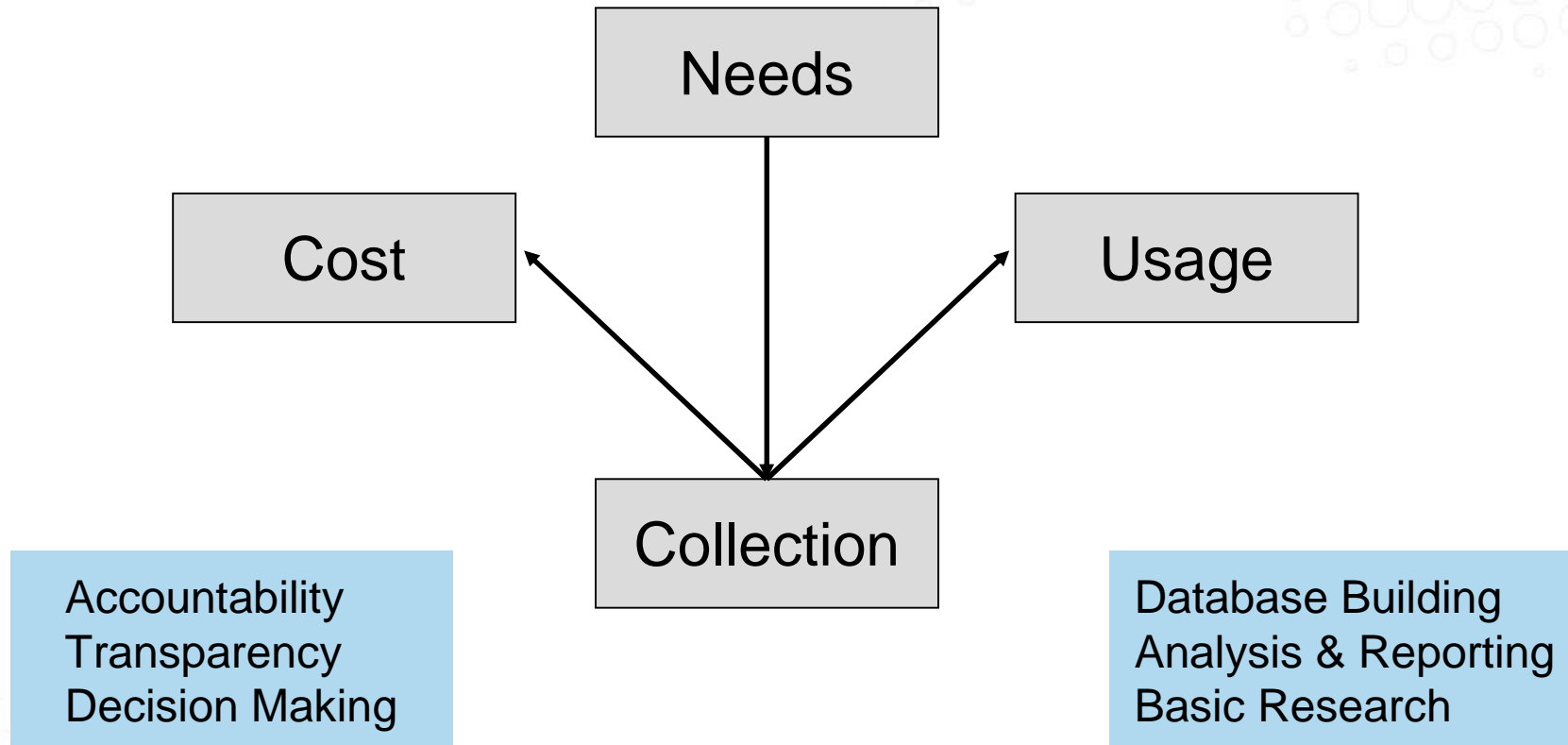


Department for Scientific Information Provision

- Building Collections – Licensing
- Building Services – Access & Retrieval
- Building Evidence

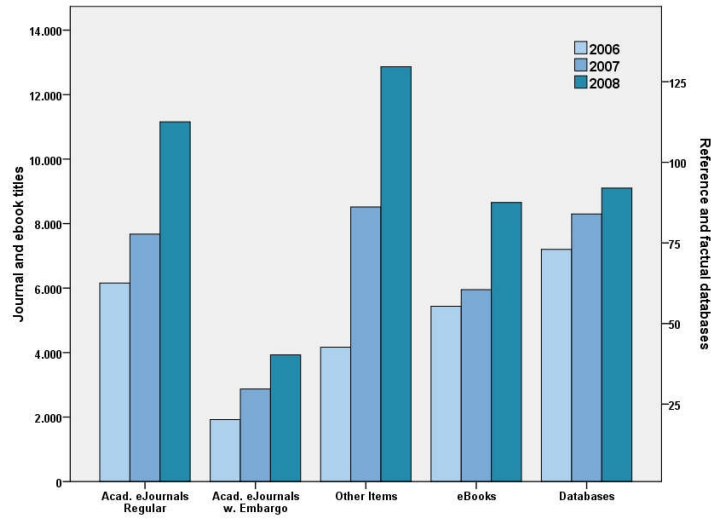


Building Evidence



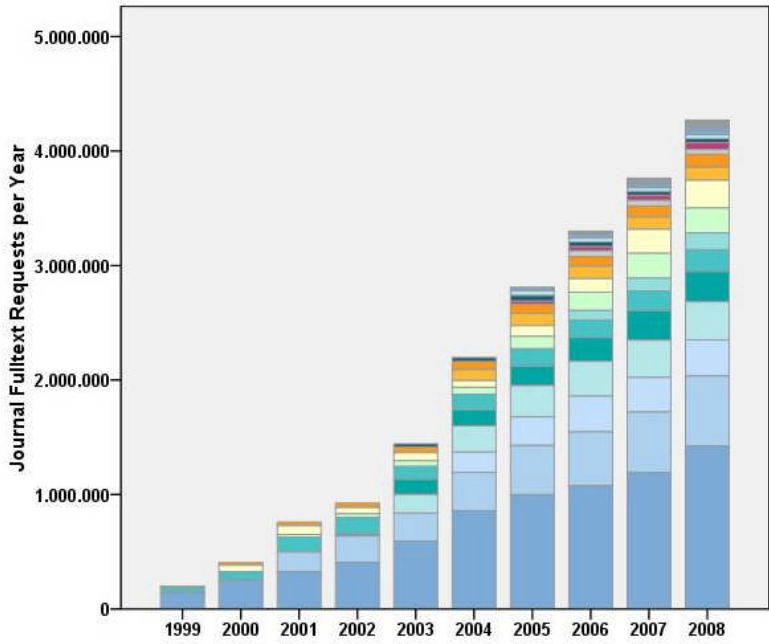


Building Evidence



Collection

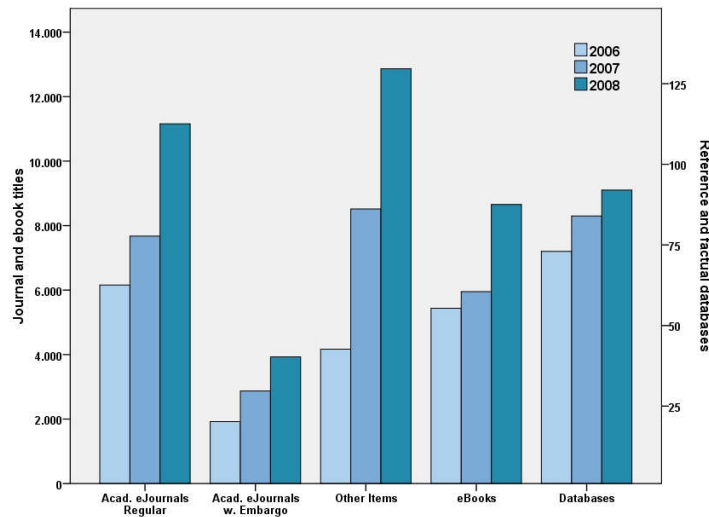
Cost



Usage



Description of Collection



entity	subtypes and item numbers
Licenses	> 150 current, 160 retired
Products	> 300 subscribed, > 100 proposal to trial
Resources	> 10.000 current academic journals > 4.000 academic journals with embargo > 10.000 book titles > 10.000 other item titles > 100 reference and factual databases
Interfaces	~ 150 platforms

- no single catalogue
- unconsolidated definitions
- insufficient provider data
- highly dynamic situation
- substantial inconsistencies in
 - provider data
 - knowledge bases

➔ in-house development of database



Shaping Collection - Assessment of Needs



78 Institutes
 71 Libraries
 ~ 15.000 Scientists

domain	organisation
Physics Chemistry Biology Geosciences Psychology Anthropology Linguistics Sociology Law Art History	30-1000 scientists 0-20 librarians 7 library systems 71 catalogues 3 countries ...



Shaping Collection - Assessment of Needs

Otto-Hahn-Bibliothek des Max-Planck-Instituts für biophysikalische Chemie, 37077 Göttingen

Status: In Arbeit Beendet Kein Bedarf Anm.:

Datensätze: alle nur selbst bearbeitete

COUNTER: alle FTR > 0 FTR top 100 Inst.: Biophysikalische Chemie

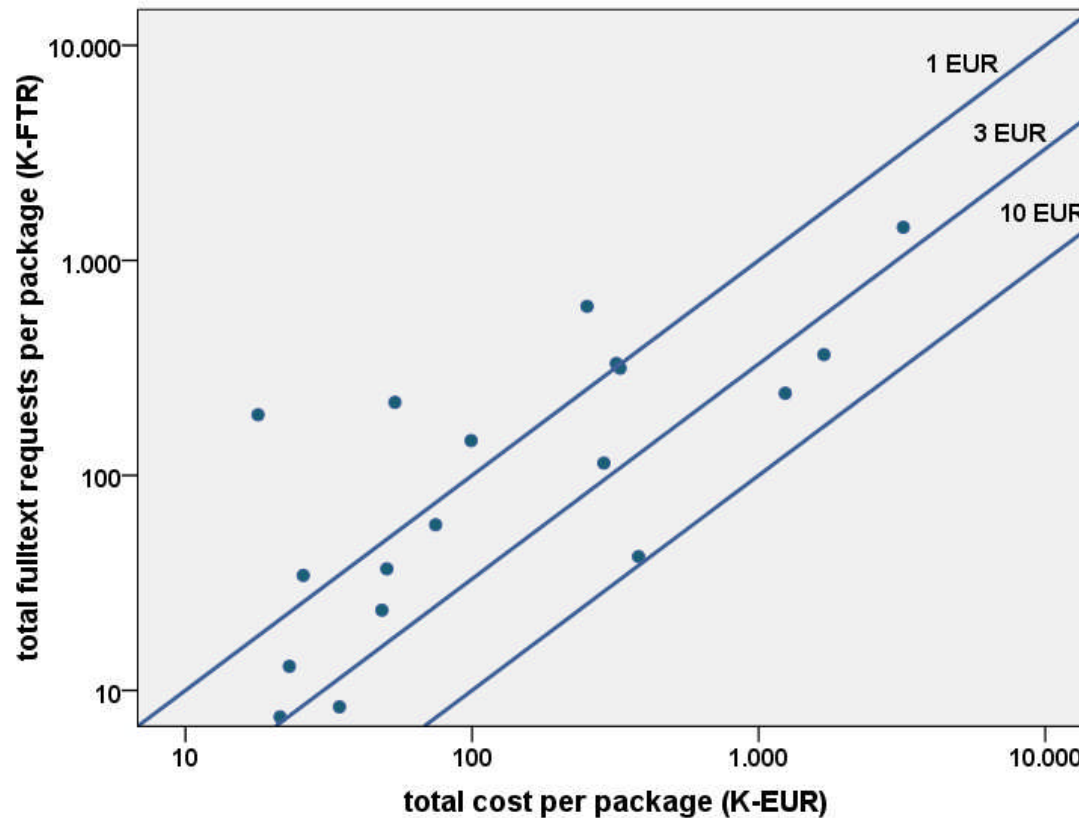
Filter	Erfassen	Exp
	Bedarf	Print Von
	all	all
full edit	essentiell	≤2000
full edit	essentiell	≤2000
full edit	essentiell	≤2000
full save	essentiell	≤2000
full edit	o.B.	≤2000
full edit	nice	≤2000
full edit	wichtig	≤2000
full edit	essentiell	≤2000
full edit	wichtig	--
full edit	nice	--
full edit	essentiell	≤2000
full edit	essentiell	≤2000
full edit	nice	--
full edit	nice	--
full edit	essentiell	≤2000
full edit	nice	≤2000

eBooks		titles	lib's	needs	
Credo RefWorks	2008	359	26	666	
Wiley Online-Books	2008	4.861	47	6.767	
Wiley RefWorks	2008	91	40	522	
		5.311		7.955	
Journals		titles	lib's	needs	JR1
Blackwell	2008	921	60	2.105	211.257
Wiley	2008	448	55	1.779	104.048
Elsevier	2009	1.727	65	7.929	112.937
Springer	2009	1.784	64	5.254	62.333
Taylor & Francis	2009	1.435	60	2.519	7.772
		6.315		19.586	498.347

full edit	essentiell	≤2000	2009ff	1p	LifeSci	Chemistry and Physics of Lipids	3311	149	256
full edit	nice	≤2000	2003		Chemistry	Colloids and Surfaces A: Physicochemical and Engineering Aspects	7248	121	129



Estimating Cost-Value - the Coarse View



Cost / Usage

- total license cost
- total number of fulltext requests

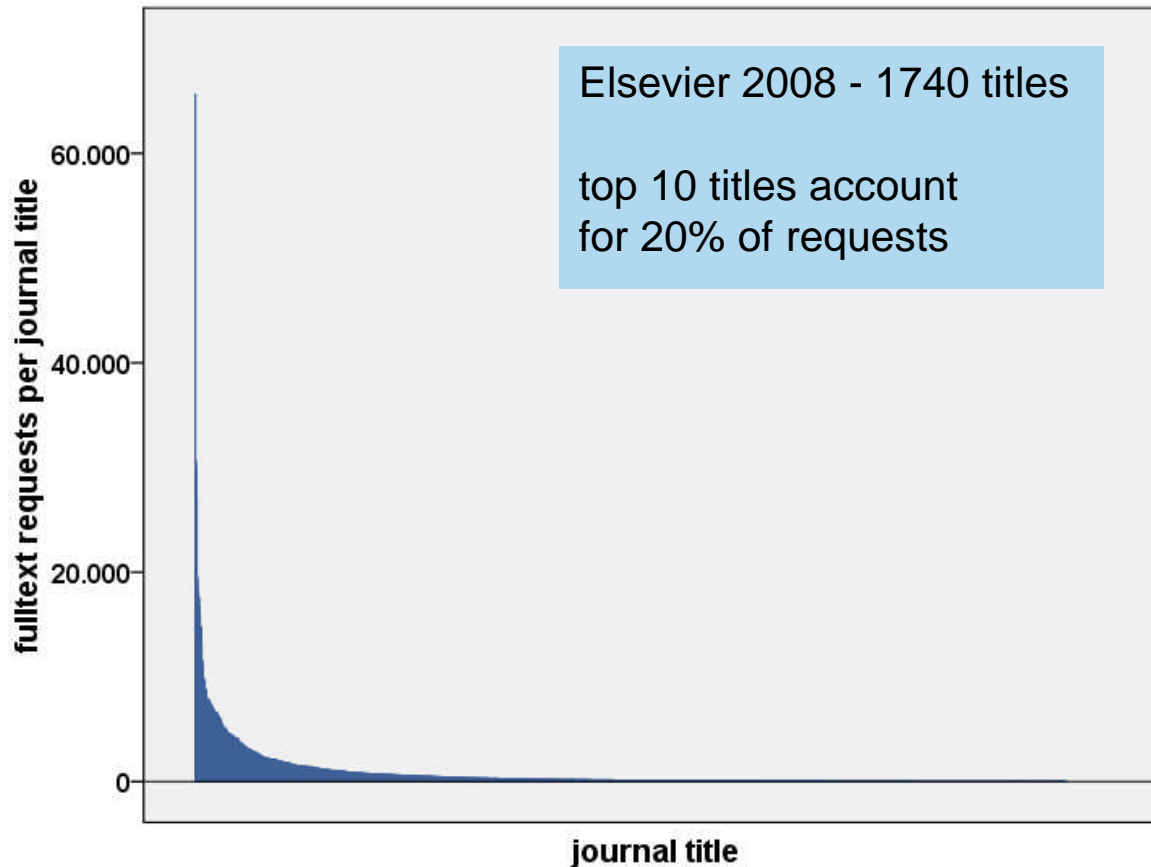
COUNTER JR1



"Usage" – Looking Closer

Patterns of Usage

contagiousness



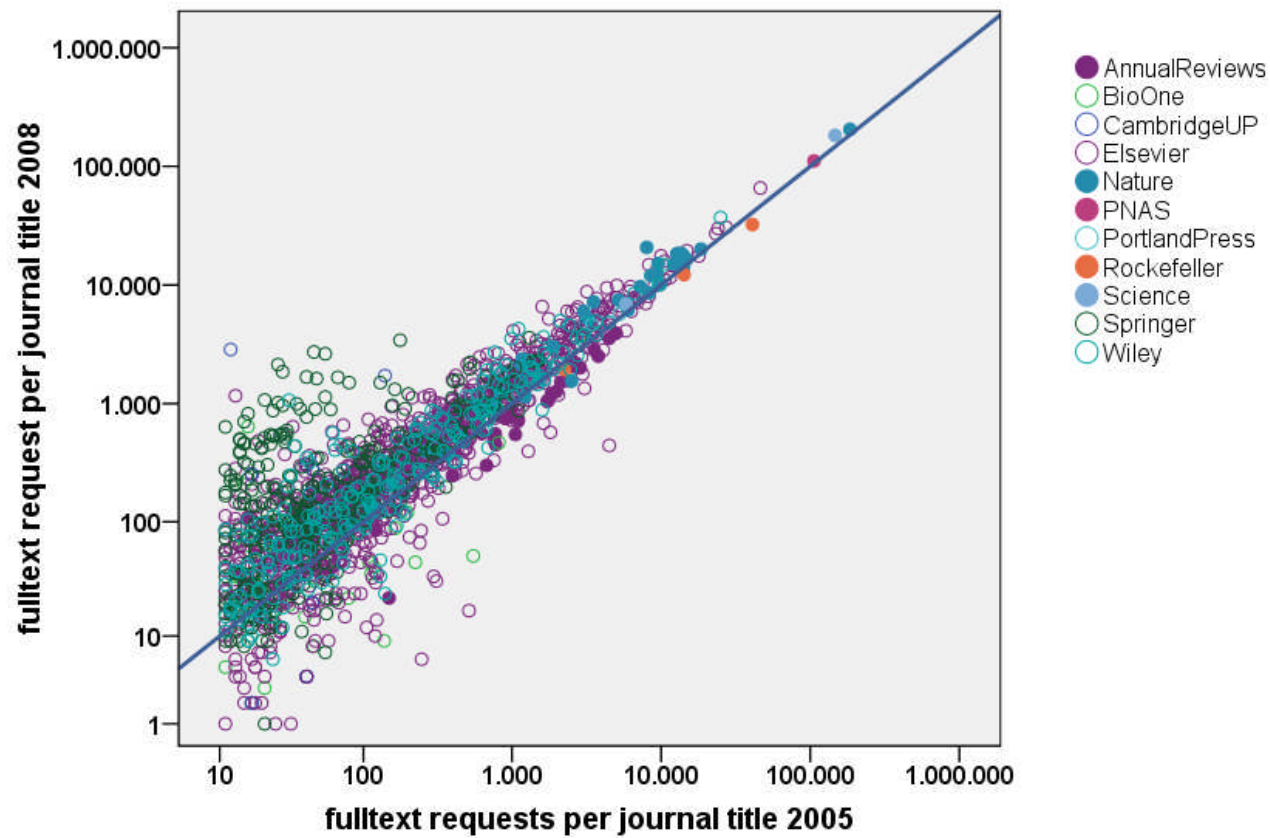
title	rpy
1	64,054
2	34,259
3	29,873
4	24,967
5	19,440
6	17,552
7	16,406
8	14,824
9	14,469
10	13,867
Σ	249,711



"Usage" – Looking Closer

Patterns of Usage

long term trends

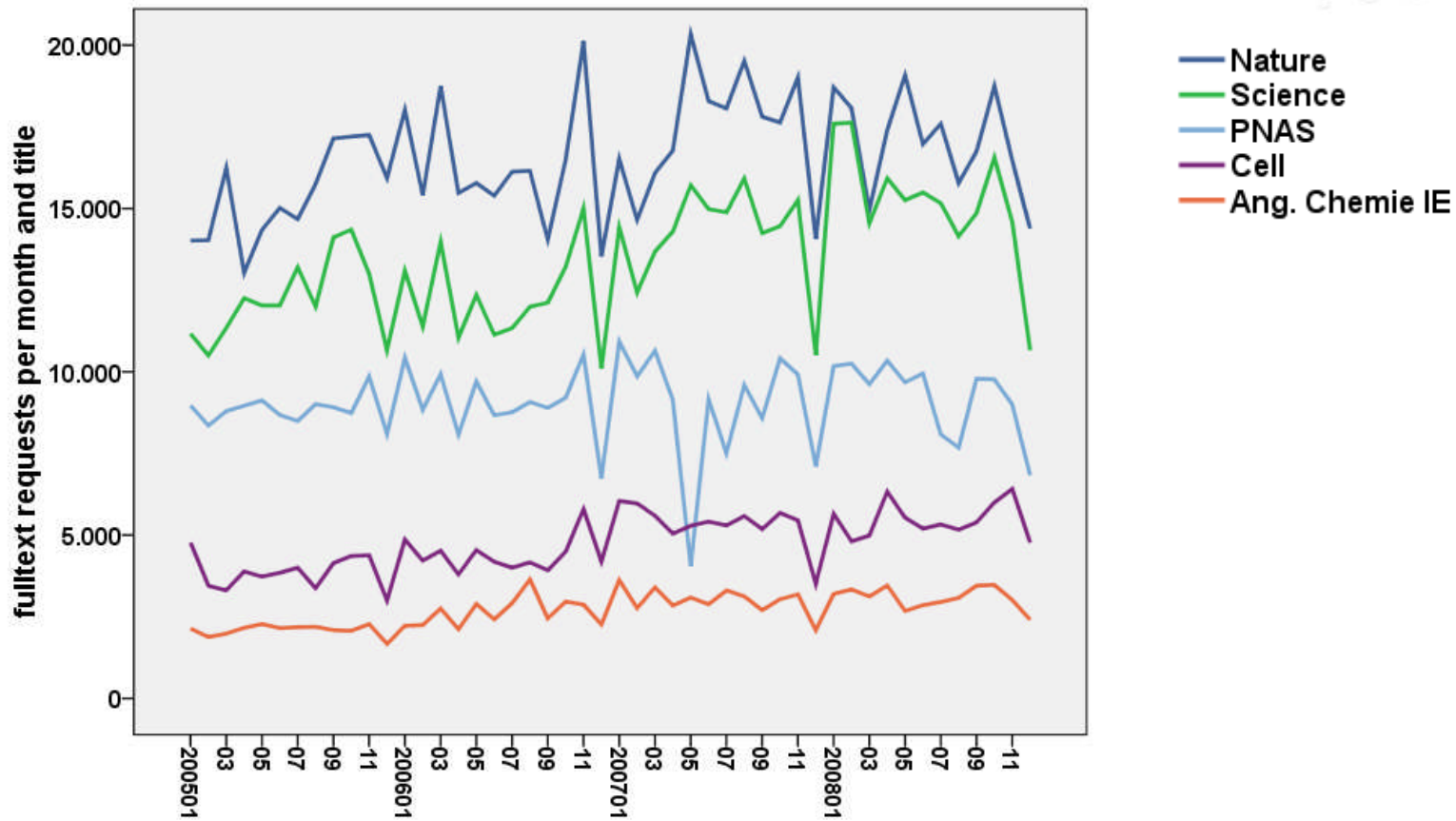




Building Evidence – Looking Closer

Patterns of Usage

long term trends

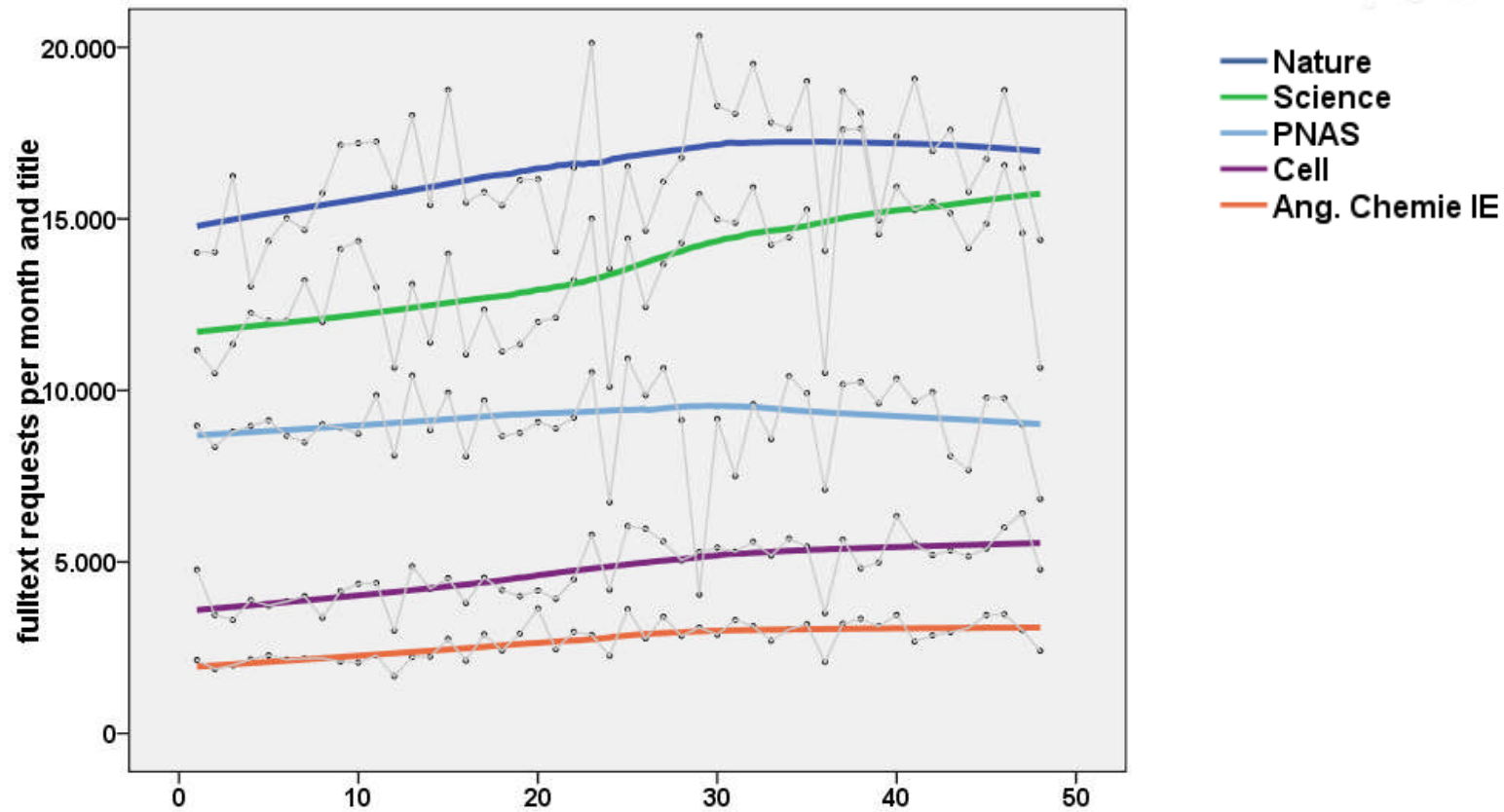




Building Evidence – Looking Closer

Patterns of Usage

long term trends

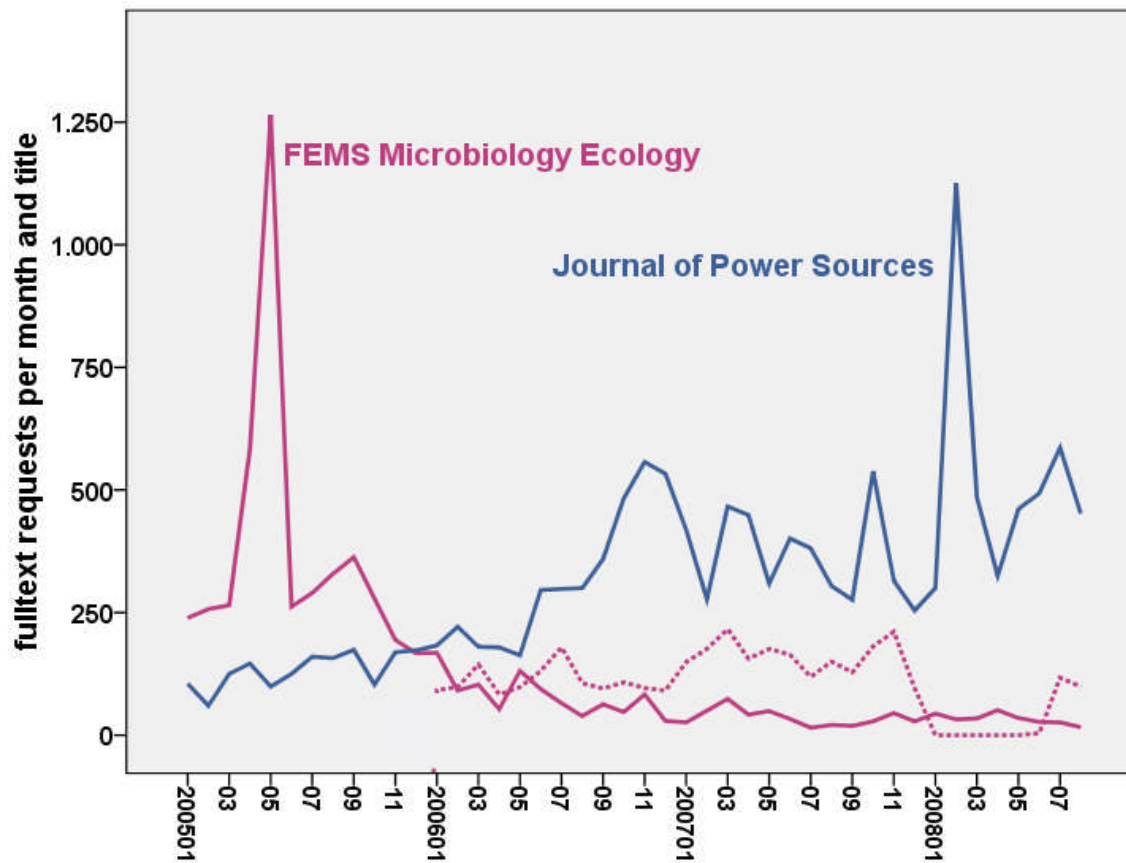




"Usage" – Looking Closer

Patterns of Usage

time / variance



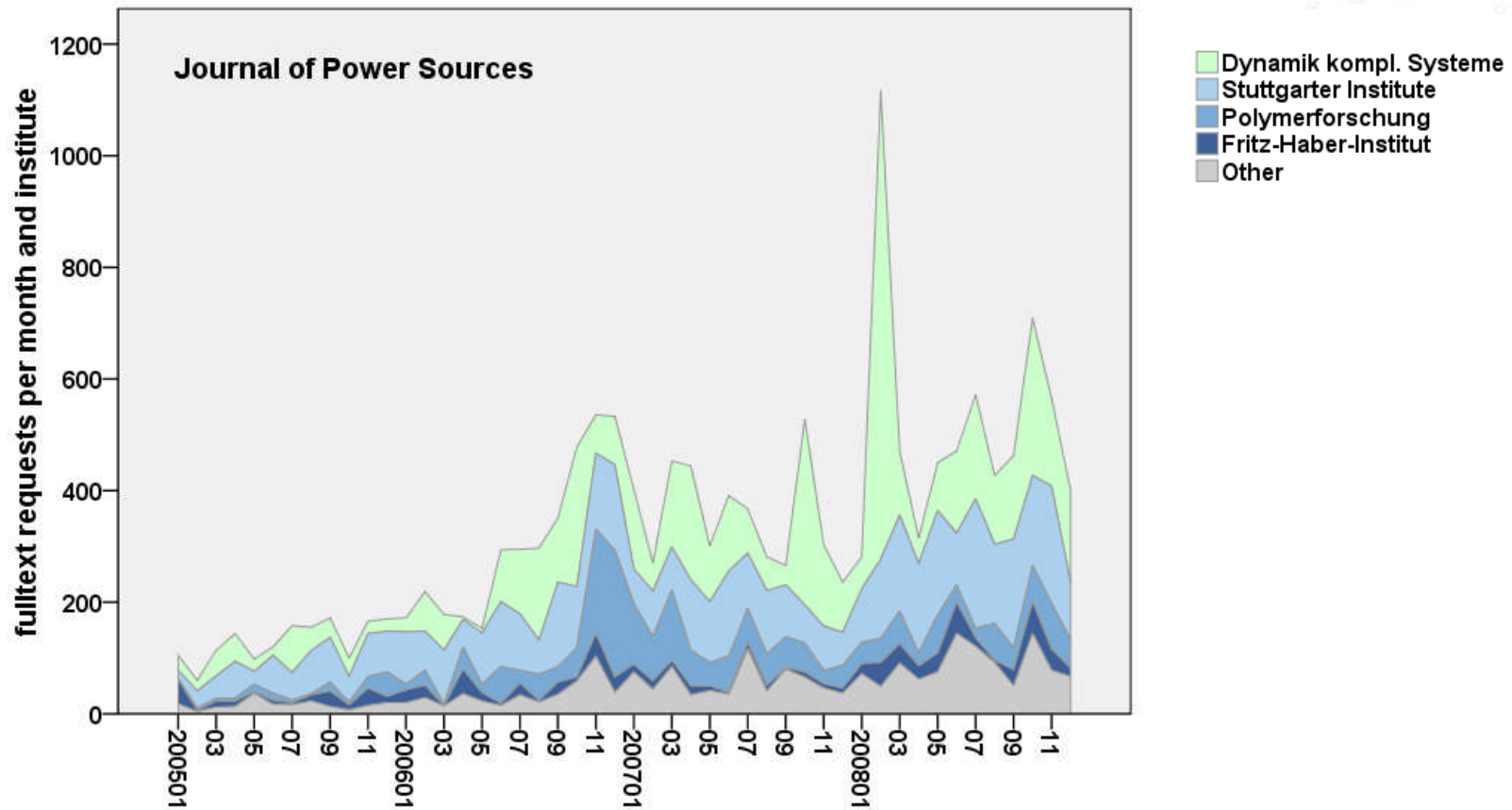
- considerable variance
- frequent outliers
- platform change
→ data split



"Usage" – Looking Closer

Patterns of Usage

time / MPI

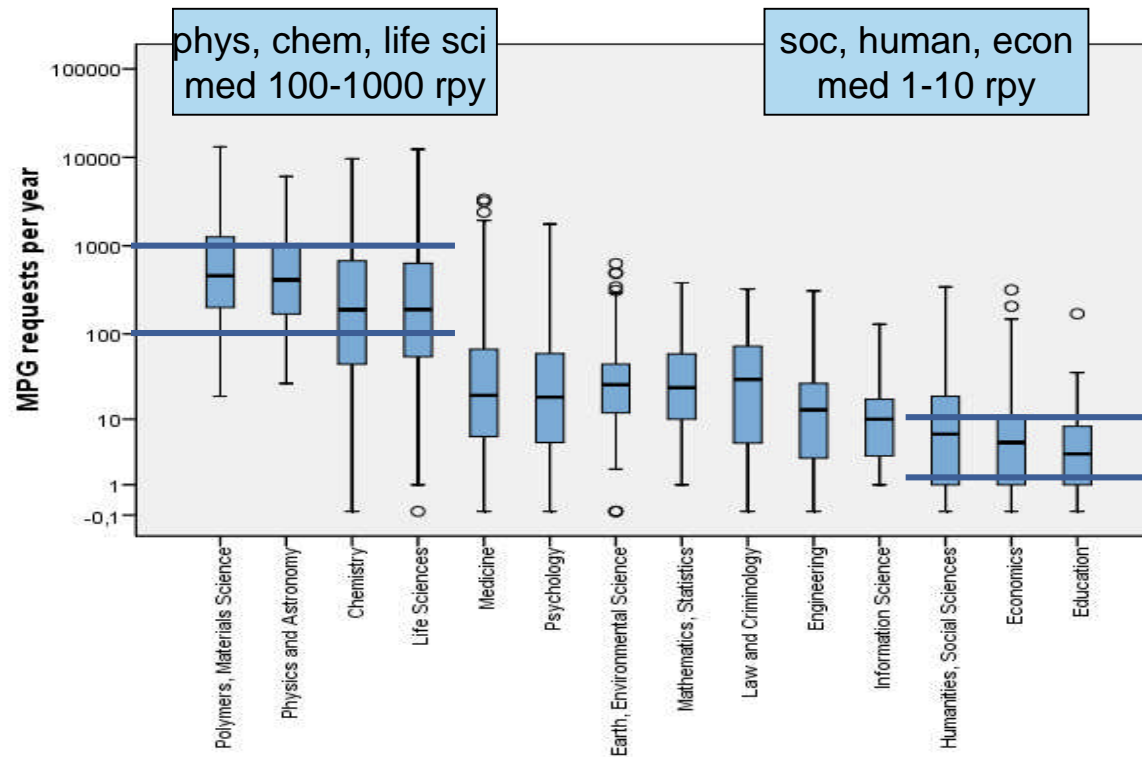




"Usage" – Looking Closer

Patterns of Usage

domain



- MPS domain structure
- domain specific content structure
- domain specific behavior



"Usage" – Looking Closer

Patterns of Usage

dimensions

what **article**, editorial, letter, abstract, supplementary material, ...

via url, link, citation reference, ...

where **publisher platform**, repository, website, mail, file system, ...

how find, select, **request**, store, read, copy, **cite**, reuse, ...

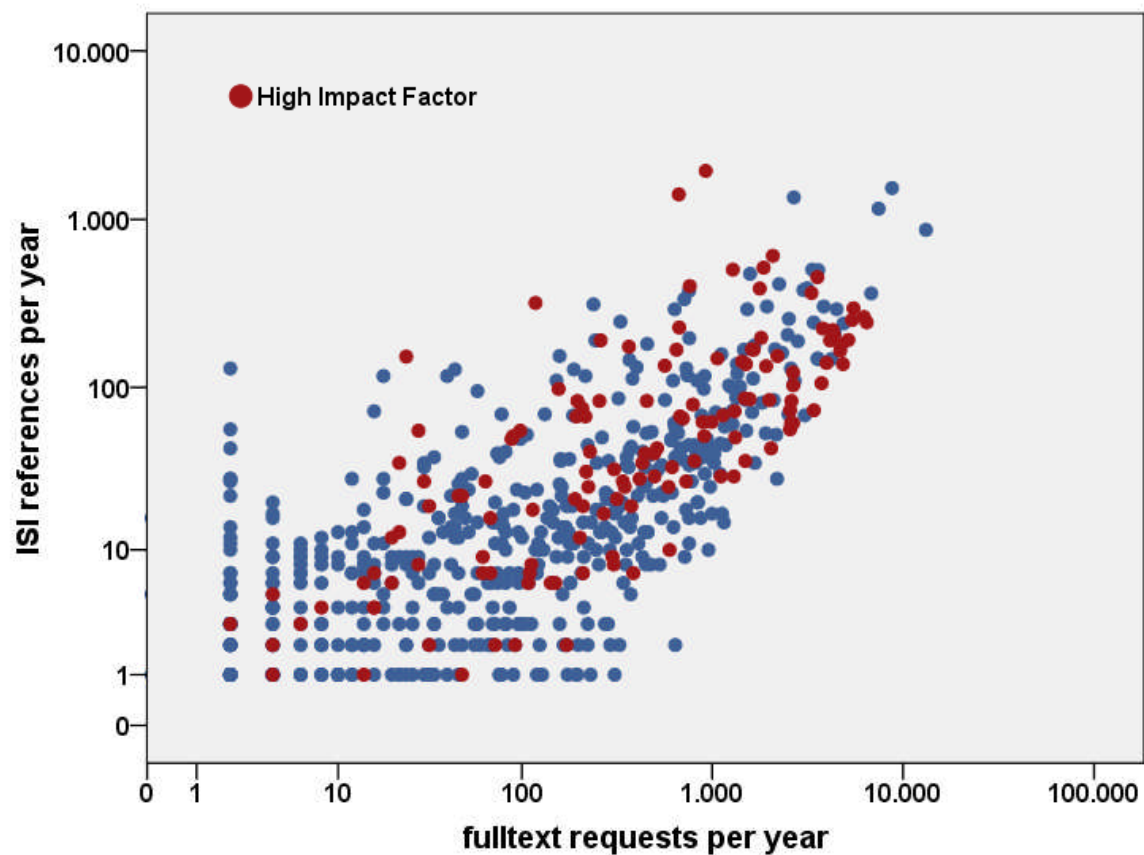
Request <> Download <> Usage <> Value



"Usage" – Looking Closer

Patterns of Usage

dimensions



multivariate analysis

- MPS publications
- MPS references
- JCR Impact Factor
- Access Systems
- Repositories
- ...

→ deeper insight into MPS information space



Building Evidence – The Grounds to Build On

- well established knowhow and processes in information management
- rising awareness towards data integrity and exchange at the provider's side
- elaborate, flexible and scaling inhouse database environment
- professional analytical techniques
- endurance and patience