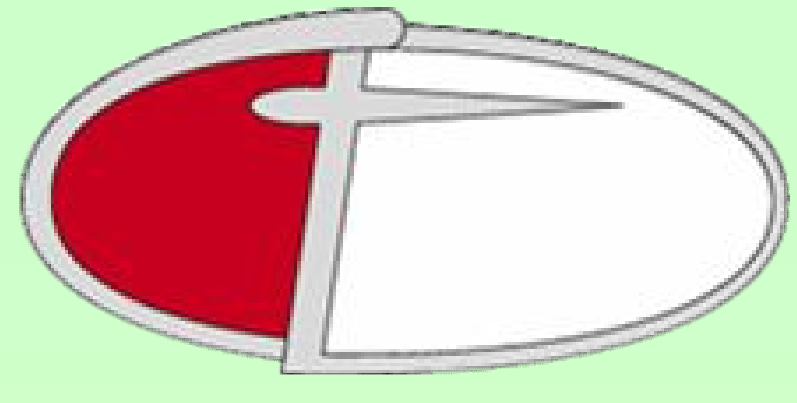


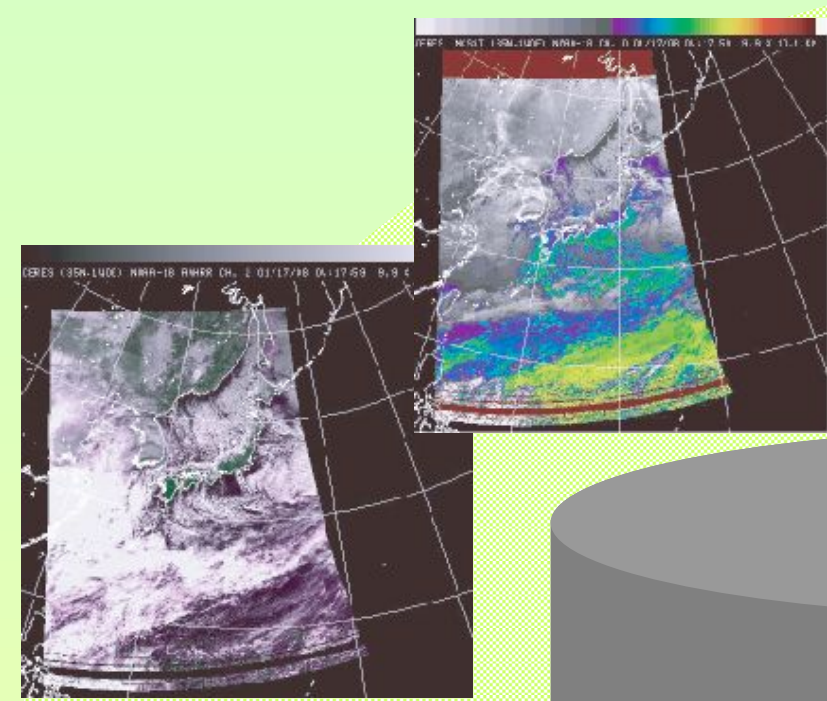
A usage-centered approach for the promotion of institutional repository : a case of Chiba University

MORI Ichiro, IWAI Aiko, KATOH Koichi, MORITOMO Kazue, SUZUKI Hiroko, TAKANO Atsuko, TAKEUCHI Yaeko, YONEDA Naho, ARAI Sachiyo, TAKEUCHI Hiroya, TUTIYA Syun
(Chiba University, JAPAN) faf2253@office.chiba-u.jp



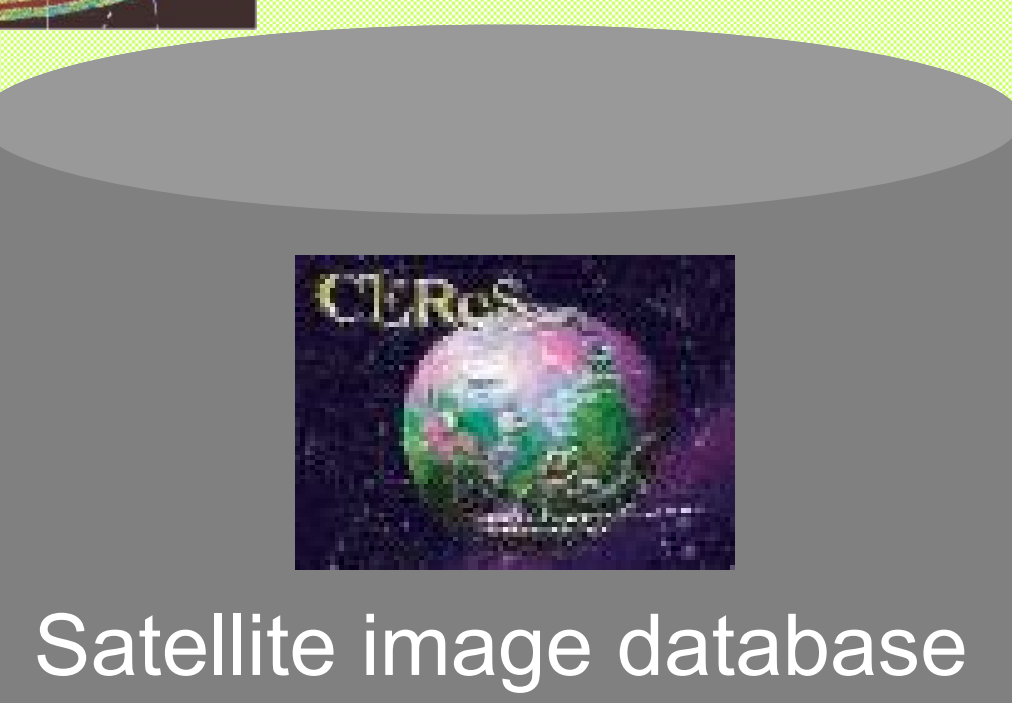
Chiba University library, as one of the founders and very active members of DRF, has also initiated some innovative attempts along with the DRF's shared

idea of *the enhancement of usage of contents on repositories* in the promotion of **Chiba University's Repository for Access to Outcome from Research (CURATOR)**.



Satellite image data

This is a plan to harvest data both from CURATOR and the satellite databases to provide data to outside users.



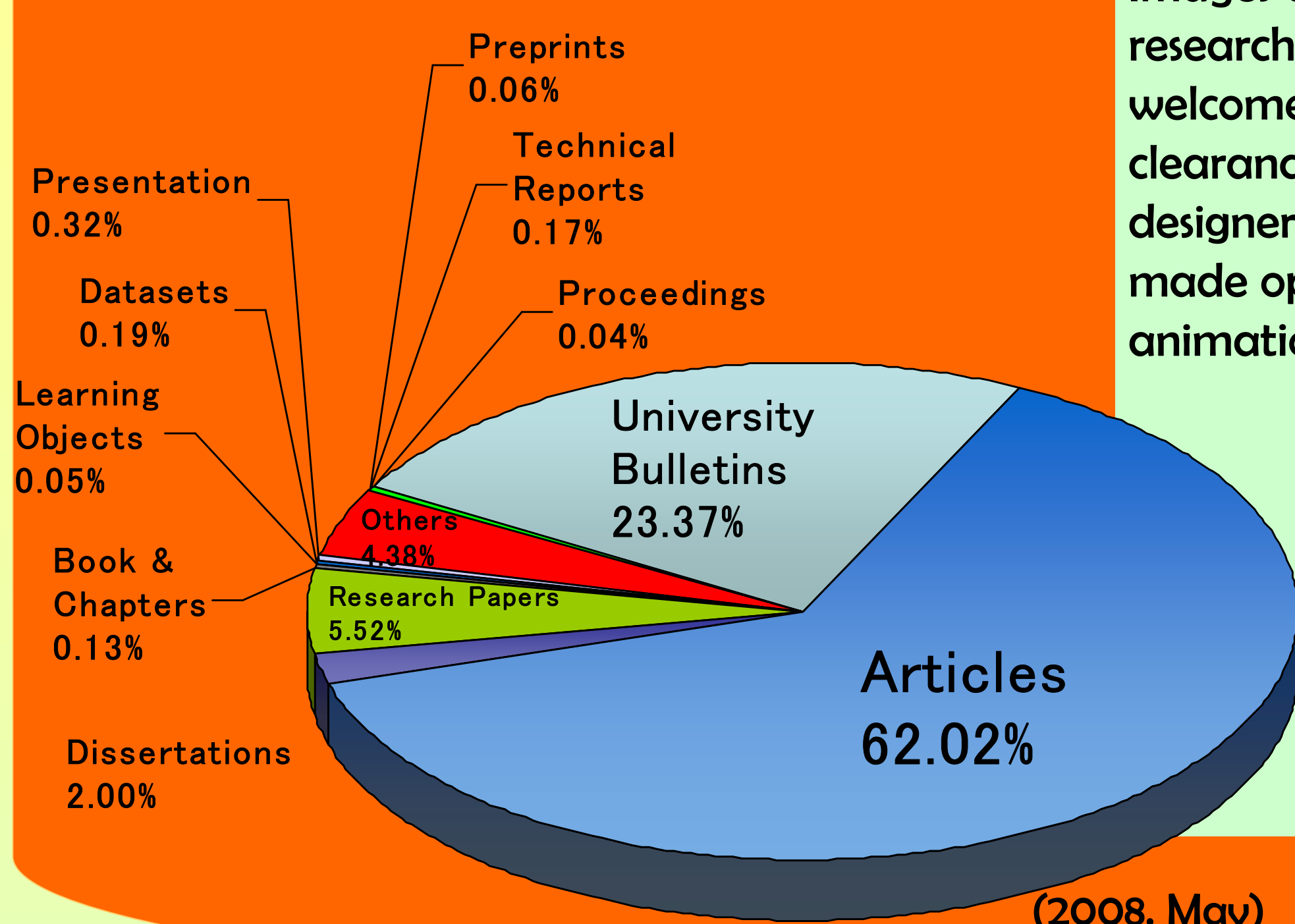
Other database

Harvester on campus

To Outside



Chiba University's Repository for Access to Outcome of Research



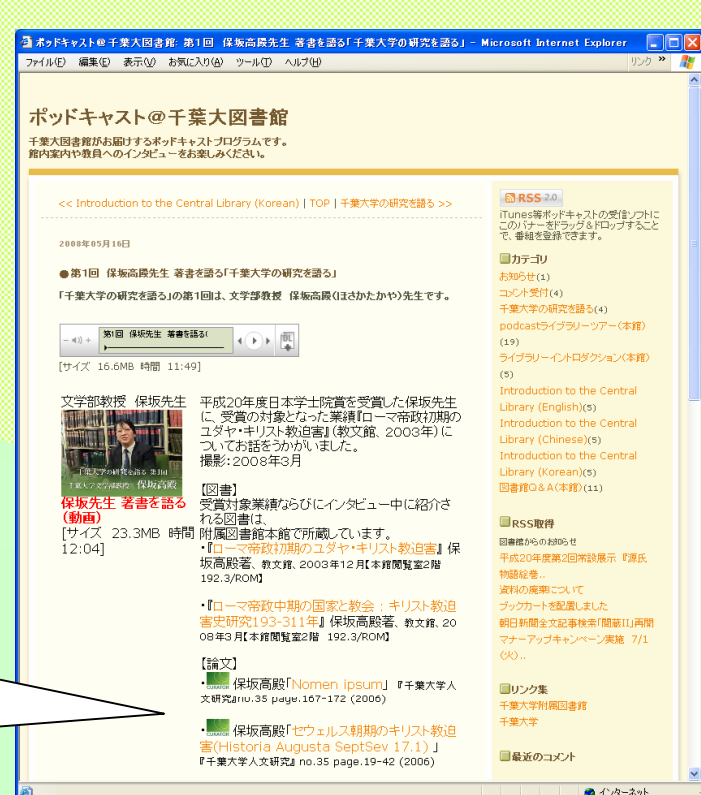
Design images with 3D animations

Images of industrial designs created by alumni are research outcome deposited under the "everything welcome policy". After the complicated right clearance processes to gain permissions from the designers and the advertisers, those images were made open access, to some of which we added 3D animations.

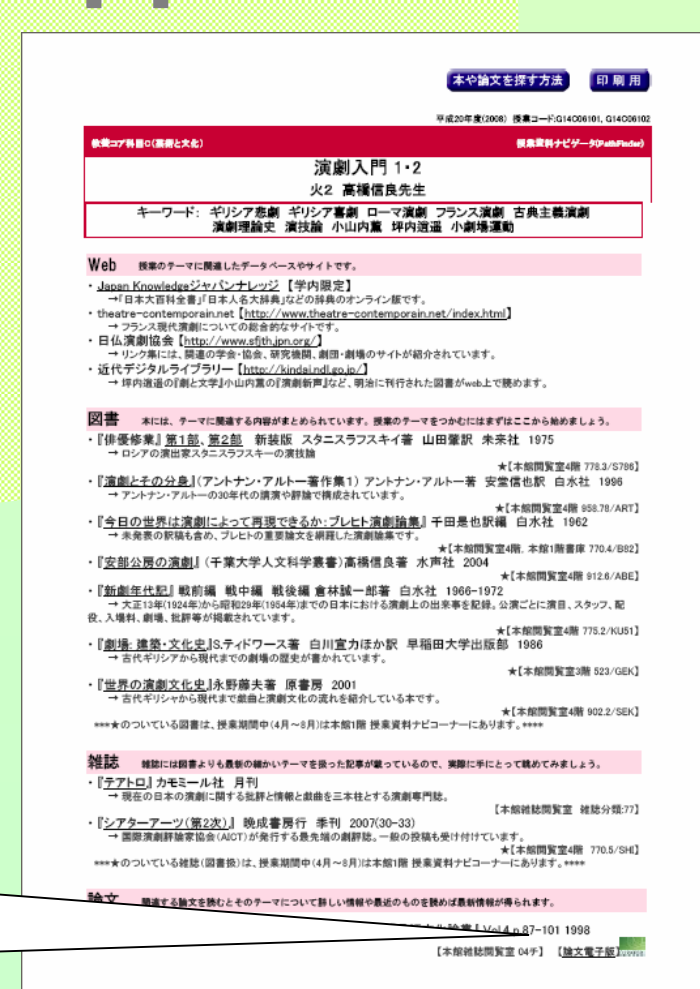


(2008. May)

Promotion of research outcome by podcasting



Research outcome for educational support : pathfinder



The Digital Repository Federation (DRF) is a collaborative initiative by librarians in Japanese universities to improve

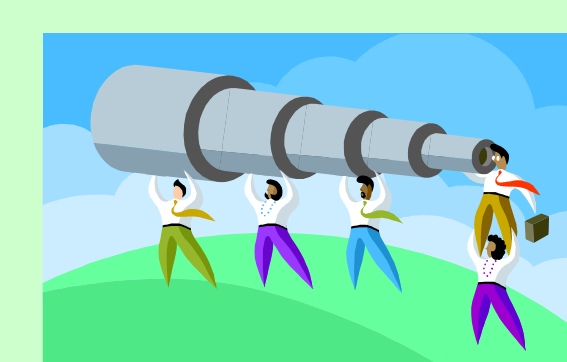
scholarly communication by promoting over 50 institutional repositories they have launched and managed since 2004.



58 institutions (2006-2007)

Enhancement of usage of the contents on repositories: the key to the sustainable future of institutionally supported digital repositories.

Our future...



Assisting searches



Formation of research community based on usage



Pearls of Wisdom

Enhancement of contents and linkage

