



Evolution and conservation of plant NLR functions

Florence Jacob^{1,2}, Saskia Vernaldi¹ and Takaki Maekawa^{1*}

¹ Department of Plant-Microbe Interactions, Max Planck Institute for Plant Breeding Research, Cologne, Germany

² Unité de Recherche en Génomique Végétale, Institut National de la Recherche Agronomique, Centre National de la Recherche Scientifique, Université Evry Val d'Essonne, Evry, France

Edited by:

Jörg Hermann Fritz, McGill University, Canada

Reviewed by:

Walter Gassmann, University of Missouri, USA

Geanncarlo Lugo-Villarino, Centre National de la Recherche Scientifique, France

Ken Shirasu, RIKEN, Japan

*Correspondence:

Takaki Maekawa, Department of Plant-Microbe interactions, Max Planck Institute for Plant Breeding Research, Carl-von-Linné-Weg 10, D-50829 Cologne, Germany
e-mail: maekawa@mpipz.mpg.de

In plants and animals, nucleotide-binding domain and leucine-rich repeats (NLR)-containing proteins play pivotal roles in innate immunity. Despite their similar biological functions and protein architecture, comparative genome-wide analyses of *NLRs* and genes encoding NLR-like proteins suggest that plant and animal NLRs have independently arisen in evolution. Furthermore, the demonstration of interfamily transfer of plant NLR functions from their original species to phylogenetically distant species implies evolutionary conservation of the underlying immune principle across plant taxonomy. In this review we discuss plant NLR evolution and summarize recent insights into plant NLR-signaling mechanisms, which might constitute evolutionarily conserved NLR-mediated immune mechanisms.

Keywords: NLR, NB-LRR, resistance protein, innate immunity, effector-triggered immunity

INTRODUCTION

Plants rely entirely on innate immunity to fight pathogens (1), as they do not have an adaptive immune system, including specialized immune cells, like higher animals. To achieve a specialized and targeted immune response, plants possess several lines of defense against pathogens. Plasma membrane localized pattern-recognition receptors recognize conserved pathogen molecules, such as flagellin and chitin and provide broad-spectrum pathogen resistance (2). However, host-adapted pathogens suppress this immune response by delivering effector molecules inside host cells (3, 4). As a counter mechanism, plants deploy the nucleotide-binding domain and leucine-rich repeats (NLR) family of intracellular receptors to detect the presence of effectors, triggering potent innate immune responses (5, 6). The former class of immunity is called “pattern-triggered immunity” (PTI), whereas the latter is called “effector-triggered immunity” (ETI), which is often associated with genetically programmed host cell death (1).

The mechanism of effector recognition by plant NLRs has been well established. Plant NLRs utilize two major modes of effector recognition: a direct and an indirect recognition mode (5–8). In both cases, plant NLRs are kept in an inactive form by either intra- or inter-molecular interactions in the absence of cognate effectors (9). The difference lies within the mode of effector recognition: in case of the direct recognition, an effector is detected by direct physical interaction with its cognate NLR, whereas during the indirect recognition, a NLR senses modifications of host proteins caused by the cognate effector action. Experimental evidence supports that the indirect recognition enables a single NLR to recognize multiple effectors irrespective of effector structures when effectors target the same host protein (5, 6). However, detection of multiple effectors by a single NLR is not exclusive to the indirect recognition mode. Recently it was demonstrated that a single NLR can detect at least two sequence-unrelated effectors by direct binding (10).

Knowledge on signal initiation and transduction mediated by plant NLRs is rather sparse compared to the effector detection mechanism. However, through recent progress in plant NLR biology, the mechanisms of signal initiation and signaling relay are gradually being revealed. Furthermore, the demonstration of interfamily transfer of NLR functions across plant lineages implies evolutionary conservation of the underlying immune mechanisms. On the following pages, we will discuss plant NLR evolution and summarize recent insights into plant NLR-signaling mechanisms, which might hint at yet unidentified, evolutionarily conserved NLR-mediated immune signaling mechanisms. Furthermore, comparative genome-wide analyses of genes encoding NLRs and NLR-like proteins among various plant lineages give insights into the presumed history of plant NLR evolution and consequently important clues to elucidate NLR functions in innate immunity and possibly functions beyond innate immunity.

SURVEY OF *NLR* GENES IN LAND PLANTS: TOWARD A MODEL OF PLANT NLR EVOLUTIONARY HISTORY EXPANDED *NLR* REPERTOIRES ACROSS PLANT LINEAGES

Similar to animal NLRs, plant NLRs are modular proteins that generally consist of three building blocks: a N-terminal domain, the central NB-ARC domain (named after Nucleotide-Binding adaptor shared with APAF-1, plant resistance proteins, and CED-4), and a C-terminal LRR (leucine-rich repeats) domain (11). The central domain of animal NLRs is also known as the NACHT domain (named after NAIP, CIITA, HET-E, and TP1) (12) which is structurally similar to the plant NB-ARC domain but distinctive of animal NLRs (13, 14). The utilization of either a TOLL/interleukin 1 receptor (TIR) domain or a coiled-coil (CC) domain at the N-terminus is a plant-NLR-specific feature and defines two major types of plant NLRs termed the TIR-type NLRs (TNLs) and the CC-type NLRs (CNLs), respectively. However, it

is often challenging to specify structures of N-terminal domains for a significant proportion of plant NLRs due to their structural diversity and lack of significant homology to validated protein structures. Thus, NLRs containing an N-terminus other than the TIR domain are sometimes designated as non-TIR-type NLRs (nTNLs) as a distinction to TNLs.

The NLR family has massively expanded in several plant species. The massive expansions render the NLR family one of the largest and most variable plant protein families (15, 16). This contrasts with the vertebrate NLR repertoires, typically comprising ca. 20 members (17–20). Detailed genome-wide surveys, database mining, and degenerate PCR approaches for the species whose genome sequences are currently not available contribute to refine an overview of the NLR repertoires in various plant species (Table 1). Most of the plant genomes surveyed so far have a large NLR repertoire with up to 459 genes in wine grape (Table 1). Interestingly, the bryophyte *Physcomitrella patens* and the lycophyte *Selaginella moellendorffii* which represent the ancestral land plant lineages seem to have a relatively small NLR repertoire of ~25 and ~2 NLRs respectively, suggesting that the gene expansion has occurred mainly in flowering plants (Table 1; Figure 1). It was recently shown that numerous microRNAs target nucleotide sequences encoding conserved motifs of NLRs (e.g., P-loop) in many flowering plants (21). Thus it is hypothesized that such a bulk control of NLR transcripts may allow a plant species to maintain large NLR repertoires without depletion of functional NLR loci (22, 23), since microRNA-mediated transcriptional suppression of NLR transcripts could compensate for the fitness costs related to maintenance of NLRs (21, 24).

The number of NLR genes in flowering plants is largely variable without any clear correlation to the phylogeny, suggesting species-specific mechanisms in NLR genes expansion and/or contraction (Table 1). This variability can be exemplified by three species in the brassicaceae family: *Arabidopsis thaliana*, *Arabidopsis lyrata*, and *Brassica rapa*, which have 151, 138, and 80 full-length NLRs, respectively (Table 1). Expansion of NLR genes has also occurred in several metazoans such as sea urchin (*Strongylocentrotus purpuratus*) and sea squirt (*Ciona intestinalis*), which possess 206 and 203 NLRs, respectively (20, 43, 44). In contrast, the genomes of fruit fly (*Drosophila melanogaster*) and nematode (*Caenorhabditis elegans*) apparently lack NLRs, suggesting that NLRs have been lost in these invertebrate species (17).

ORIGIN OF NLR BUILDING BLOCKS

Comparison of NLR repertoires from higher plants to ancestral taxa common for plants and animals could hint at the time and mechanism which led to the assembly of NLR building blocks into a single multi-domain receptor. Yue et al. (25) conducted a full genome-wide comparison of NLR repertoires among 38 model organisms encompassing all the major taxa (6 eubacteria, 6 archaeobacteria, 6 protists, 6 fungi, 7 plants, and 7 metazoans). This dataset was further enriched with the genomic and transcriptomic data available for 5,126 species of nine major early plant lineages (chlorokybales, klebsormidiales, zygnematales, coleochaetales, charales, liverworts, bryophytes, hornworts, and lycophytes). The results of this large-scale data mining imply that the core building blocks of NLRs, such as NB-ARC, NACHT, TIR, and LRR, already existed before eukaryotes and prokaryotes

Table 1 | Plant NLR gene repertoires identified by genome-wide analyses.

Species	Common name	Genome size (Mbp)	NLRs	TNLs	CNLs	XNLs	Reference
<i>Arabidopsis thaliana</i>	Thale cress	125	151	94	55	0	Meyers et al. (18)
<i>Arabidopsis lyrata</i>	Lyre-leaved rock-cress	230	138	103	21	NA	Guo et al. (33)
<i>Brachypodium distachyon</i>	Brachypodium	355	212	0	145	60	Li et al. (34)
<i>Brassica rapa</i>	Mustard	100–145 ^a (529)	80	52	28	NA	Mun et al. (35)
<i>Carica papaya</i>	Papaya	372	34	6	4	1	Porter et al. (36)
<i>Chlamydomonas reinhardtii</i>	Chlamydomonas	120	0	0	0	0	Yue et al. (25)
<i>Cucumis sativus</i>	Cucumber	367	53	11	17	2	Wan et al. (37)
<i>Glycine max</i>	Soybean	1115	319	116	20	NA	Kang et al. (38)
<i>Medicago truncatula</i>	Barrel medic	186 ^a (500)	270	118	152	0	Ameline-Torregrosa et al. (39)
<i>Oryza sativa</i>	Rice	466	458	0	274	182	Li et al. (34)
<i>Physcomitrella patens</i>	Moss	511	25	8	9	8	Xue et al. (28)
<i>Populus trichocarpa</i>	Poplar	550	317	91	119	34	Kohler et al. (40)
<i>Sorghum bicolor</i>	Sorghum	760	184	0	130	52	Li et al. (34)
<i>Solanum tuberosum</i>	Potato	840	371	55	316	NA	Jupe et al. (41)
<i>Selaginella moellendorffii</i>	Spike moss	100	2	0	NA	NA	Yue et al. (25)
<i>Vitis vinifera</i>	Wine grape	487	459	97	215	147	Yang et al. (42)
<i>Zea mays</i>	Maize	2400	95	0	71	23	Li et al. (34)

The table represents NLR and NLR-like gene numbers corresponding to NB-ARC-LRR-encoding genes. The numbers for TNLs, CNLs, and XNLs correspond to genes encoding either full-length TNLs, CNLs, XNLs, or the NB-ARC-LRR-containing proteins if these can be clearly assigned to one of the NLR types based on their motif composition at the NB-ARC domain. X refers to any N-terminal domain other than TIR or CC. ^aAnalyses based on partial genome sequence; the respective complete genome sizes are indicated in brackets.

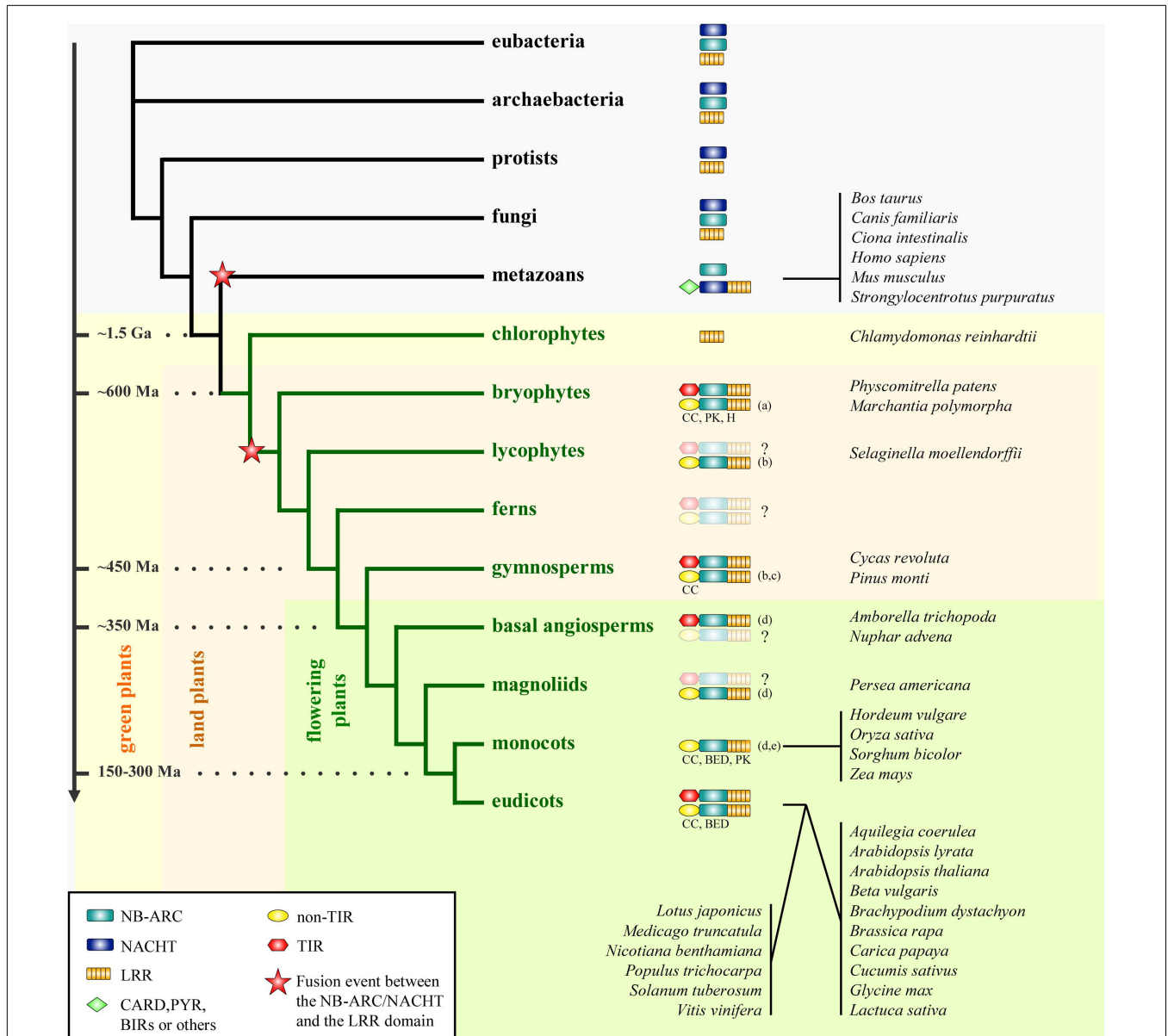


FIGURE 1 | Phylogenetic distribution of the NLR family. The distribution of the individual domains constitutive of NLRs (NB-ARC, NACHT, and LRR) and the different groups of NLRs are mapped on a simplified phylogenetic tree. The fusion events between either the NB-ARC or the NACHT domain and the LRR domain presumably occurred as indicated on the phylogenetic tree. The structural properties of the N-termini of plant NLRs in the non-TIR group are indicated if the information is available (CC, coiled-coil; BED, BED-DNA-binding zinc finger; H, α / β -hydrolase; PK, protein kinase; for

more detail, see Atypical Domains Found in the NLR Structure). This figure is adapted from Yue et al. (25), combined with data as indicated below. The divergence dates are adapted from Ref. (26) and (27). Species representative of some taxa are indicated on the right. Ma, million years; Ga, billion years. The question mark (?) indicates that the presence of NLRs is not clearly resolved in given taxa due to lack of data. (a) Xue et al. (28), (b) Kim et al. (29), (c) Heller et al. (30), (d) Tarr and Alexander (31), (e) Faris et al. (32).

diverged, since these constitutive domains are also found in the genomes of eubacteria and archaeobacteria surveyed (Figure 1).

INDEPENDENT FUSION EVENTS IN THE EARLY HISTORY OF ANIMAL AND PLANT NLRs

The aforementioned study implies that the fusion events between an ancestral NACHT domain and an LRR domain, and between an ancestral NB-ARC domain and an LRR domain occurred independently in the early history of metazoans and plants [Ref.

(25); Figure 1]. Therefore this further supports the previously proposed idea that plant and animal NLRs are the consequence of a convergent evolution (45–47). Analysis of the phylogeny and motif combinations of the NACHT/NB-ARC domains revealed clear differences between the NACHT and the NB-ARC domains, suggesting either an ancient divergence, or an independent origin of these two domains, which happened before the divergence of eukaryotes, eubacteria, and archaeobacteria (25). With the current data, both fusion events could be dated back to a period

coinciding with the appearance of multicellularity (25). In this perspective, plant and animal NLRs provide an interesting example of structural and functional convergence, with a shared ability to discriminate self from non-self and to induce immune responses.

DISTINCT AND ANCIENT EVOLUTIONARY TRACKS FOR TNLS AND nTNLS

Extending the work by Meyers et al. (48), Yue et al. (25) identified the ten most conserved motifs in NACHT and plant NB-ARC domains. This analysis revealed contrasting motif frequencies between animal NLRs and plant NLRs and further discriminates TNLS from nTNLS. This is consistent with the phylogeny based on the NB-ARC domain where plant TNLS and plant nTNLS segregate in two monophyletic clades. This result is also supported with intron phase and position analysis (18). Based on these analyses, both studies revealed a greater diversity in the nTNLS compared to the TNLS. The observed greater diversity could account for an older origin of the nTNL type compared to the TNLS, as proposed previously by Cannon et al. (49) and Meyers et al. (18). Nevertheless, the co-occurrence of TNLS and nTNLS in the bryophyte *P. patens* (25, 28), a representative of one of the most ancient land plant lineages, suggests that both NLR groups appeared in the very early history of land plants (Figure 1).

ABSENCE OF TNLS IN SEVERAL PLANT SPECIES

Although the origins of TNLS and nTNLS seems to date back to very early land plant lineages, TNLS are known to be absent from monocots [Ref. (25, 50); Table 1]. To examine whether the other plant lineages also lack TNLS, Tarr and Alexander (31) retrieved NB-ARC sequences by using degenerate PCR combined with published datasets from diverse plant lineages, since sequences of a motif within the NB-ARC domain can be used to discriminate TNLS and nTNLS (25, 48). This study suggested the presence of TNLS in basal angiosperms and gymnosperms, whereas TNLS seem to be rare in magnoliids (Figure 1). In agreement with previous studies, no typical TNLS have been found in monocot species representing three monocot orders (31), supporting the idea that this type of NLR was lost in monocots.

TNLS are also absent from several basal eudicot families/species, such as the Lamiales, the Ranunculaceae *Aquilegia coerulea* (51), and the core eudicot *Beta vulgaris* (52). Interestingly, *NRG1* (N Requirement Gene 1) genes encoding members of an atypical CNL group also appear to be absent from the plant species lacking TNLS (51). This intriguing correlation suggests a functional link between *NRG1* family and TNLS (51). *NRG1* was originally identified with a functional screening of immune components required for the function of N, a TNL (53). It was shown that the *ADR1* (Activated Disease Resistance Gene 1) family, a very close homolog of *NRG1* family, potentiates salicylic acid signaling pathway (54, 55). Since immunity mediated by many TNLS is conditioned by salicylic acid signaling (56), it is possible that *NRG1* has evolved as a regulator of salicylic acid signaling especially for TNL-mediated immunity.

TRACING BACK NLR FUNCTION(S) IN LAND PLANT EVOLUTIONARY HISTORY

When did plant NLRs become immune regulators?

Most of the characterized plant NLRs display a classical resistance (R) gene function consisting of mediating isolate-specific effector recognition and initiating resistance responses. To date all NLRs

classified as resistance genes belong to the angiosperms (flowering plants), summarized in Plant Resistance Gene Wiki [Ref. (57); <http://prgdb.crg.eu>], whereas there is no functional data available for the NLRs of other land plant taxa including gymnosperms, ferns, and bryophytes. This might be due to the lack of appropriate pathosystems that allow testing NLR functions in non-angiosperm plants. However, a few studies suggest a link between NLRs and biotic stresses in non-angiosperm plants. For example, a NB-ARC-containing gene of *P. patens* is upregulated upon abscisic acid treatment (58). In higher land plant species, this phytohormone acts in both abiotic and biotic stresses (59). It was also reported that some gymnosperm NLRs are differentially regulated upon interaction with microorganisms (30, 60, 61). Although these data are indicative of relatively early occurrence of NLR function in disease resistance in plant lineages, it is necessary to validate immune functions of those genes with appropriate host/pathogen systems.

“Atypical” NLR functions

Recent studies have revealed a role for NLRs apart from the classical R gene function. These “atypical” functions include the conditioning of broad-spectrum resistance, regulatory roles in abiotic stresses, or the role as “helper” NLR for other NLRs.

Among the NLRs conferring broad-spectrum resistance, Rice *Panicle blast 1* (*Pb1*) represents a well-characterized example. *Pb1* encodes a CNL (62). *Pb1* confers resistance to a broad range of *Magnaporthe grisea* isolates, which contrasts with the isolate-specific resistance mediated by R genes described before. Due to its degenerate domain structure and isolate unspecific resistance phenotype, the immune mechanism mediated by *Pb1* is thought to differ from the other “canonical” NLRs (62). It was recently demonstrated that *Pb1* physically associates with a transcription factor, OsWRKY45, which is an essential component of the response against *M. grisea* and a prominent regulator of signaling of an important defense phytohormone, salicylic acid, in rice (63, 64). Interestingly, this physical association elevates OsWRKY45 protein amount presumably by preventing the protein degradation from an ubiquitin proteasome system (63). In addition, the successful transfer from maize to rice of *Rxo1*, a NLR conferring broad-spectrum resistance, suggests that the underlying resistance mechanism seems to be shared among distantly related monocotyledonous species (65).

Arabidopsis *ADR1* family (*ADR1*, *ADR1-like1*, *ADR1-like2*) belongs to the RPW8-type of CNLS and is exceptionally conserved among various plant species including monocotyledonous and eudicotyledonous plant species (51). Because of such a high degree of conservation, much attention has been paid to this family, which might represent a conserved and potentially ancestral function. Constitutive expression of *ADR1* in Arabidopsis confers drought tolerance (66, 67), indicative of its complex function beyond innate immunity.

Several NLRs are required for the functions of other NLRs. *ADR1* family members are also required for PTI and ETI mediated by a distinct set of NLRs, which are dependent on salicylic acid signaling for full immune response (54). Consistent with the immune responses conferred by those NLRs, the *ADR1* family is involved in a feedback amplification loop of salicylic acid signaling and its biosynthesis, cooperating with *EDS1*, an important immune regulator (54, 55). Another example for a helper function

of NLRs is tomato NRC1. NRC1 is required for the immunity conferred by Cf-4, a non-NLR R protein. Silencing of *NRC1* in *N. benthamiana* impairs the hypersensitive response mediated by several other R proteins including two NLRs, Rx, and Mi (68). Because such “helper” NLRs are required for the functions of other NLRs, they might be involved in relaying the signal downstream of the respective innate immune sensors besides a role in defense-phytohormone pathways.

NLR GENE ORGANIZATION AND DYNAMICS IN THE GENOME

NLR repertoires are qualitatively and quantitatively varied among plant species (Table 1). This reflects a rapid evolution of the NLR family. Here we summarize insights into genomic organization and diversification of plant NLRs.

NLRs MAINLY OCCUR IN CLUSTERS

NLRs are distributed unevenly in the genome and show a clear tendency for clustering (18, 19, 39, 41, 69). The size of clusters is rather variable, and the largest clusters contain over 10 NLRs in some species (19, 39). In japonica rice, the chromosome 11 alone encodes about a quarter (133 NLRs) of total NLRs (19). Overall in the rice genome, 51% of the NLRs reside in 44 clusters. The proportion of singletons of rice NLRs (24.1%) is close to that of *A. thaliana* (26.8%) (18). A similar tendency was observed in *M. truncatula* in which 49.5% of NLRs belong to clusters, each comprising of at least 3 NLRs, and 39% of NLRs belong to two pseudo-clusters on chromosome 3 and 6 if clustering criteria are somewhat relaxed (39). As a comparison, the human genome possesses 22–25 NLRs and more than 50% belong to a cluster (70). For example, 14 NLRs forming the NLRP (Nucleotide-binding oligomerization domain, leucine-rich Repeat, and Pyrin domain containing) family are present on two clusters on chromosome 11 and 19 (71). NLRP clusters were also found in mouse (*Mus musculus*), dog (*Canis familiaris*), and cattle (*Bos taurus*) genomes (72, 73). Therefore, clustering is a feature shared by both plant and mammalian NLRs.

NLR clusters can be divided into two types depending on the contents of NLRs: (i) homogenous clusters usually contain NLRs from the same type (TNL or CNL) (ii) heterogenous clusters contain a mixture of diverse NLRs. The former type of cluster is generated by tandem duplication, whereas the latter cluster type is derived from ectopic duplications, transpositions, and/or large-scale segmental duplications with subsequent local rearrangements (74). From an evolutionary perspective, clustering is considered as a reservoir of genetic variation (75). The size of the NLR clusters seems to positively correlate with the density of transposable elements on the same chromosome (34, 39). Therefore transposable elements might be involved in NLR evolution, possibly by increasing the genomic instability and the probability of recombination.

NLR GENES UNDERGO A FAST EVOLUTIONARY DIVERSIFICATION DRIVEN BY COMBINED GENOMIC REARRANGEMENTS AND POSITIVE DIVERSIFYING SELECTION

The NLR gene family has evolved by the conjunction of duplication, unequal crossing over, ectopic recombination, or gene conversion (19, 33, 34, 39, 42, 76, 77). In addition, evidence of positive diversifying selection, an evolutionary force that favors

the accumulation of mutations, is often found in NLRs. These processes contributed to make the NLR family one of the most variable gene families in the plant genomes (15, 16). Here, we further describe NLR evolutionary dynamics at three different scales: (i) at a genome-wide level, (ii) at a NLR subfamily level, and (iii) at an intragenic level.

- (i) Local- and large-scale duplication events are responsible for expansion of NLR repertoire, but this process is partially compensated by gene contraction mechanisms (75, 78–80). As an example, *A. thaliana* has experienced two to three times whole genome duplication events, whilst NLR-encoding genes are highly underrepresented (78). These processes result in a high gene turnover, which can continuously refresh NLR repertoires while limiting the total number of NLR genes, and are together referred to as the “birth and death” process (75). Limiting NLR number seems to be biologically relevant, since products of NLR genes can come at a fitness cost (24), whereas diversity and novelty of NLRs can generate and maintain a broad range of resistance specificities.
- (ii) The analysis of a NLR subfamily containing multiple NLR homologs revealed distinct evolutionary patterns within family members (81). This shows that evolution can shape different homologous NLRs in different ways. This aspect is discussed further at the section “Distinct Evolutionary Patterns in NLR Genes.”
- (iii) Different selection mechanisms can be detected at the intragenic level, namely at regions encoding distinct NLR domains. The NB-ARC domain is generally under purifying selection, which disfavors accumulation of non-synonymous mutations, whereas positive diversifying selection is often found at region encoding the LRR domain and sometimes at the other parts of NLR (76, 77, 80, 82).

These mechanisms of evolution at various levels contribute to a high degree of inter- and intragenic variation of NLRs and account for highly species-specific NLR repertoires (25, 34, 76).

SPECIES-SPECIFIC EVOLUTIONARY TRAITS AND POTENTIAL LINKS TO PLANT LIFESTYLES

There are some species-specific features in NLRs evolution. For example, a higher NLR loss rate has been reported in maize compared to other monocot species (34), a higher degree of NLR clustering has been observed in *M. truncatula* (39), and a higher duplication and recombination frequency was found in two perennial woody species, wine grape and poplar (42). The latter result suggests that an increased frequency in duplication and recombination might compensate for the slower evolution rate due to a longer life cycle in some perennial species (42). In a similar manner, NLRs in the self-fertilizing species *A. thaliana* tend to evolve faster than in its outcrossing close relative *A. lyrata* (33, 76). Incompatible NLR gene interactions in offspring of crosses between particular plant individuals sometimes trigger an autoimmune-like response designated as hybrid necrosis (83). As the occurrence of hybrid necrosis is potentially greater in outcrossing species than in self-fertilizing species, hybrid necrosis might

strongly influence *NLR* evolution in outcrossing species. Taken together, it is tempting to speculate that some factors like life style or reproductive fashion might influence *NLR* evolutionary processes.

DISTINCT EVOLUTIONARY PATTERNS IN *NLR* GENES

The analysis of the *RGC2 NLR* family in diverse lettuce subspecies (*Lactuca* spp.) provided an interesting insight into the evolution of individual *NLR* genes (81). This study identified two distinct evolutionary patterns for *Lactuca NLRs*: “type I” is characterized by a “rapid innovative” mode of evolution consisting of frequent sequence exchanges with other *NLR* loci and diversifying selection, in contrast to “type II” characterized by a “conservative” mode with infrequent sequence exchange and purifying selection. This observation was also confirmed in other species, suggesting that these two mechanisms drive the evolution of a majority of plant *NLRs*. Comparison of *A. thaliana NLR* repertoire with the one of its close relatives *A. lyrata* revealed again these two types of evolutionary patterns, with the type II found in a minority of *NLRs* (<30%) present as singletons or with low copy number variation and the type I found in *NLRs* from multigenic families or clusters (33, 76). Indeed, there is a positive correlation between gene copy number and sequence exchange frequency, and similarly between cluster size and sequence exchange frequency (33, 76). This partially explains why genes in multigenic families or in clusters are more prone to diversification and why singletons are likely to remain as singletons.

Additionally, some differences might exist in the evolutionary pattern depending on the *NLR* type considered (*TNLs* or *CNLs*) although these do not show clear common trends (42, 76). For example, *TNLs* are characterized by a higher number of introns while *CNLs* are often encoded by single exons (18). Introns might give more flexibility in the recombination events. *TNLs* are therefore more prone to structure diversification via domain reshuffling.

STRUCTURAL DIVERSITY OF PLANT *NLRs*: AN IMPLICATION FOR THEIR DIVERSIFIED FUNCTIONS?

Beside *NLRs* with the conventional structure like *CNL* or *TNL*, plant genomes encode a significant number of *NLRs* and *NLR*-like proteins displaying unconventional domain composition and/or atypical domain arrangements (18, 25, 28, 39, 42). In the following paragraphs we will review the structural diversity of *NLRs* and *NLR*-like proteins in various plant species.

The “Rosetta Stone Hypothesis” proposes that when two proteins that are separate in some species are fused in another species, their fusion likely reflects a previously hidden interaction between the two seemingly non-related proteins (84). *Arabidopsis RRS1* is a *TNL* which contains an additional *WRKY* domain (85). Consistent with the “Rosetta Stone Hypothesis,” a functional and physical interaction between a *NLR* and a *WRKY* transcription factor has been demonstrated in barley (86). Furthermore co-expression of individual *NLR* domains (i.e., N-terminal, NB-ARC, and LRR domains) can often reconstitute the full-length protein function (87–89). This suggests that the domains found in *NLRs* were originally separated and have then been assembled into a single multi-domain receptor during evolution. Based on

the “Rosetta Stone Hypothesis,” comparison of domain structures among *NLRs* and *NLR*-relatives in various land plants and their ancestral taxa might help to detect hidden (immune) components and mechanisms constructing *NLR* functions.

TANDEM ASSEMBLY OF *NLR* DOMAINS

In contrast to the “typical” domain arrangements such as *TNL* and *CNL* [*TIR* (T), *CC* (C), *NB-ARC* (N), and *LRR* (L)], many “atypical” domain arrangements of plant *NLRs* have been reported. Some examples are *TNTNL* and *TTNL* in *Arabidopsis* (18), *TNLT*, *TTNL*, *TNTNL*, and *NTNL* in *M. truncatula* (39), *TNLT*, *TNLN*, *TNLTN*, *TNLTNL*, *CNNL*, *CNLNL*, and *TCNL* (a possible mixture of *TNL* and *CNL*) in wine grape and *TNLT*, *TNLN*, *TNLTN*, *CNNL*, *TCNL* in poplar (42, 90). The functional analysis of *RPP2a* (a *TNTNL*) suggests that these atypical *NLRs* can indeed function in disease resistance and are not just inactive chimeras (18, 91).

Tandem assemblies of the same domains are reminiscent of homotypic dimerization (oligomerization) that have been reported for several plant *NLRs* (89, 92–95). Apart from the *TCNL* arrangement with yet unidentified functions found in poplar and wine grape (42, 90), chimeras between *CNLs* and *TNLs* appear to be rare. On one hand, this might result from infrequent recombination events between *CNLs* and *TNLs* or from negative selection acting on the resulting chimeras. On the other hand, it might suggest that physical interaction between *CNLs* and *TNLs* is not functionally relevant. At least, the *CNLs* in monocots and some other particular plant species can function in the absence of *TNLs* (see Absence of *TNLs* in Several Plant Species). However a paradox would be the fact that some *TNL* functions are dependent on *ADR1* family and also likely on *NRG1* which both belong to the *CNL* type of *NLRs* (53, 54). Thus there might be a molecular constraint that makes fusion of two types of *NLRs* difficult. Alternatively, functions of *TNLs* might not require direct interactions with *ADR1/NRG1* family.

“TRUNCATED” FORMS OF *NLRs*

NLRs are modular proteins and therefore the reverse implication of the “Rosetta Stone Hypothesis” would suggest that separated modules or “truncated” versions of *NLR* could still be functional proteins. Below we discuss the phylogenetic and functional analyses, which support this hypothesis.

The genome-wide survey of *Arabidopsis* genes encoding either *TIR*- or *NB-ARC-LRR*-containing proteins has revealed that a significant proportion (~28%) of those proteins are truncated forms of *NLR* (18). These truncated forms lack either an N-terminal domain, or the C-terminal region including the *LRR* with a variable part of the *NB-ARC* domain. *A. thaliana* genome encodes 20 *TNs* and 27 *TXs* (X indicates a domain other than *CC*, *TIR*, *NB-ARC*, or *LRR*). According to the phylogenetic analysis of the *TIR*-encoding genes in *Arabidopsis*, some large families of *TNs* and *TXs* share a common origin with *TNLs*, but diversified independently from the *TNL* family (96).

Similar truncated forms were identified in numerous other plant species including gymnosperm species, wine grape, poplar, and rice (42, 96). Phylogenetic analyses suggest that some *TXs* and some *TNs* might have orthologs in other species (42, 96, 97).

A particular family composed of atypical XTNXs was identified in *Arabidopsis*. BLAST searches revealed 35 homologs for these XTNXs in rice, grape, soybean, poplar, sorghum, physcomitrella, castor bean, maize, cassava, cucumis, papaya, and mimulus. These homologs have a high identity percentage. Therefore, this XTNX family seems to be highly conserved among land plants, including monocots, basal angiosperms, and magnoliids (98).

Although the function of these TN, TX, and XTNX proteins remains unclear, their diversification and conservation would suggest that at least some of these proteins do have important functions. Yet some studies on *Arabidopsis* TXs and TNs suggest possible roles in immunity and beyond. *Arabidopsis* *CHS1* encodes a TN protein which confers cold resistance by limiting chloroplast damage and cell death at low temperature. *CHS1* function is achieved by regulating a PAD4-EDS1-dependent and SA-independent resistance pathway like many other TNs (99). In several cases like *CHS1*, TNs appear to lack a functional NB-ARC domain (96, 99). A systematic overexpression analysis of *Arabidopsis* TXs and TNs in tobacco or *Arabidopsis* suggests that at least some TXs and TNs might function in disease resistance (98). Interestingly some TNs and TXs were shown to interact with other NLRs and/or pathogen effectors in yeast-two-hybrid assay (98).

Arabidopsis RPW8.1 and RPW8.2 (named together RPW8) possess a putative N-terminal transmembrane domain and a CC motif. This CC motif displays a high similarity with the CC found at the N-termini of a group of CNLs, sometimes referred to as RPW8-type CNLs (51, 100). RPW8 confers broad-spectrum powdery mildew resistance in *Arabidopsis*. RPW8 requires the phytohormone salicylic acid, EDS1, NPR1, and PAD4 for its function, suggesting that RPW8 signaling might integrate downstream components required for TNs or basal immunity (101). RPW8 probably does not represent an ancestral function of NLRs, since RPW8 has evolved recently in *Arabidopsis* (102). As mentioned before, RPW8-type CNLs include ADR1 family which also displays atypical functions in and beyond innate immunity (51, 66, 67).

Truncated NLR forms can be produced by alternative splicing of full-length *NLR* transcripts. This phenomenon has already been described for diverse NLRs like L6 and N (103, 104), and those variants appear to be required for fine-tuning of the function of those NLRs (105). *RLM3* predominantly encodes a TX protein due to alternative splicing. The truncated *RLM3* confers broad-spectrum resistance to necrotrophic fungal pathogens, a pathogen type that kills its host to acquire nutrients (106). Therefore, *RLM3* exemplifies that, in some cases, the truncated form can be the active form.

VARIABILITY AT THE CENTRAL NB-ARC DOMAIN: NLRs LACKING A CONVENTIONAL NUCLEOTIDE-BINDING MOTIF

Binding of ADP/ATP at the central domain (i.e., NB-ARC domain) is pivotal for plant NLR function. It has been proposed that perception of the cognate effector induces an initial conformational change of the receptor, leading to an exchange of ADP by ATP at the NB-ARC domain. The ATP binding is expected to induce subsequent conformational changes of the NLR for signal initiation (9). This model is drawn by an auto-active phenotype and loss-of-function phenotype of plant NLRs carrying non-ATP-hydrolyzing mutations and non-ATP/ADP-binding mutations at the NB-ARC

domain, respectively (9, 107). However, it becomes evident that several plant NLRs confer pathogen resistance without the conventional nucleotide-binding motif (i.e., P-loop motif). For example, Rice *Pb1* encodes an unconventional NLR protein that contains two N-terminal CC domains (with a degenerate EDVID-motif) and a degenerate NB domain that completely lacks the P-loop motif (62). Interestingly, many of the NLR or NLR-like proteins which do not require a functional NB-ARC domain have non-canonical functions. For example, *Pb1* confers broad-spectrum resistance to rice blast (62). The ADR1 family, as described earlier in this review, seems to have a regulatory role in biotic and abiotic stress signaling (51, 54, 55).

Altogether, these data suggest that a subset of NLRs might use an unconventional activation mechanism. Some of them also have an atypical function, suggesting that along the diversification process, some functional innovations might have arisen in these NLR families.

ATYPICAL DOMAINS FOUND IN THE NLR STRUCTURE

The study of NLRs and NLR-like proteins in various plant species has revealed that some NLRs consist of domain combinations different from the classical TNL or CNL structures. Other additional domains and other N-terminal domains have been reported. We believe that these findings might help uncovering hidden interactions and mechanisms involved in NLR function.

In the indirect recognition mode, the NLR detects effector-induced modifications of a plant protein, which is designated as “guardee,” a protein targeted by an effector, or “decoy,” a protein that mimics the target of an effector but does not have a clear biological function. It has been reported that different NLRs could monitor a guardee/decoy to detect different effector activities when effectors target the same guardee/decoy (5–8). In light of the “Rosetta stone hypothesis,” it seems plausible that a fusion event has occurred between the NLR and its cognate decoy or guardee protein. Rice *RGA5* can directly bind its two cognate effectors via a non-LRR C-terminal domain. The corresponding 70 amino acids have features like a heavy metal-associated domain related to the yeast copper binding protein *ATX1* (*RATX1* domain) (10). Therefore *RGA5* might illustrate such a fusion event between NLR and its cognate decoy or guardee. A similar *RATX1* domain was found in the N-terminal domain of rice *Pik-1*, where it also likely contributes to effector binding (108). Therefore additional domains fused to the core NLR structure might contribute to different functions (effector recognition, NLR regulation, downstream signaling), independent of their position in the NLR backbone.

A mutation in the WRKY domain of *RRS1* impairs DNA-binding and induces constitutive defense activation (109). Interestingly, the CNL *MLA* interacts with *WRKY1/2* which also act as negative regulators of disease resistance (86). However *OsWRKY45* interacting with *Pb1* is a positive regulator of the *Pb1*-mediated immunity (63). These examples suggest diverse roles of WRKY transcription factors in plant NLR functions.

A negative regulatory role was found for the C-terminal LIM domain (named after *Lin11*, *Isl-1*, and *Mec-3*) of *CHS3/DAR4* (110, 111). Other domains or structures have been identified at the C-terminus of some NLRs, like the Zn-metallopeptidase domain

(18) or the Exo70 subunit of exocyst complex (112), but their functions remain unknown.

The N-terminal part of NLRs is typically considered as a signaling module, although it sometimes also contributes to effector recognition (1, 113), because expression of the N-terminal TIR or CC domain alone is able to trigger host cell death (51, 94, 95, 114). A variety of N-terminal domains other than TIR or CC have been identified, which are often restricted to certain taxa. CNLs in *Solanaceae* often possess an extended N-terminus. This extended N-terminus frequently contains a homologous domain, called the solanaceae domain (SD) (115). The SD domain is present in Mi-1.1, Mi-1.2, Rpi-blb2, Hero, and Prf (116). The SD domain does not resemble any known protein motif therefore its function is difficult to predict. A function of the SD domain was reported in Mi-1.2. In this case, different parts of the SD domain act as either positive or negative regulator of Mi-1.2 function (116).

More interestingly, some atypical N-termini show similarities to known structures: 6 NLRs of *P. patens* have a protein kinase (PK) domain [Ref. (28, 117); **Figure 1**], several NLRs of *Marchantia polymorpha* have a α/β -hydrolase domain (28), 37 NLRs of *Populus trichocarpa* have a BED-DNA-binding zinc-finger domain (42, 90). A similar zinc-finger, DNA-binding domain was found in Xa1 and in two other rice NLRs (97). The most striking example might be WRKY19/MEKK4 in *A. thaliana*, which consists of a TNL fused with a WRKY domain at its N-terminus and a MAPKKK domain at its C-terminus (WRKY-TNL-MAPKKK) (18). In addition to the known interaction between WRKYs and NLRs, these fusion events are also consistent with the reported MAPK cascade requirement for NLR function (118). Unfortunately, apart from Xa1, these atypical NLRs have not been functionally characterized (97). PK, MAPKKK, α/β -hydrolase, BED, and WRKY might represent some modules required for NLR function, either in *cis* or in *trans*. Future studies will be needed to confirm the functional link between NLR function and these modules. So far, the BED-NLRs of *P. patens* are reminiscent of the interaction of Prf with Pto kinase in tomato (115). The presence of BED and WRKY domains also suggests a possible direct role of some NLRs in transcription regulation.

CONSERVATION OF NLR-MEDIATED IMMUNITY IN PLANTS

In addition to the aforementioned mechanisms, plant-pathogen arms race also accounts for highly species-specific NLR repertoires. Pathogens have evolved effectors either to increase virulence or to escape detection by the cognate NLR; in turn, plants further evolved NLRs to detect the novel effectors (119). These iterative cycles of effector and receptor adaptations drive co-evolution of many plant NLRs with pathogen effectors, thereby driving species-specific evolution of each NLR-mediated innate immune mechanisms (1). Since interfamily transfer of NLRs previously failed to produce stable transgenic plants with expected disease resistance, the proposed restricted taxonomic functionality of individual NLRs has been considered as a major barrier to explore NLR genes in unrelated plant species (120). Interfamily transfer of NLR function was shown in a few cases by co-expression of an NLR, its cognate effector and the effector target (121). However, these data are often based on transient gene expression with strong promoters and use host cell death as proxy for NLR activity.

Since NLR-mediated host cell death responses can be uncoupled from NLR-mediated pathogen growth restriction in several cases (1, 122), it was unclear if plant NLRs also confer disease resistance in stable transgenic plants in phylogenetically distant species.

Recently it was shown that a subset of plant NLRs confers disease resistance across different taxonomic classes (123, 124). Our group demonstrated that a CNL designated as MLA1 (Mildew A 1) from the monocotyledonous plant barley (*Hordeum vulgare*, Poaceae) functions in the eudicot plant thale cress (*A. thaliana*: Brassicaceae) against barley powdery mildew *Blumeria graminis* f. sp. *hordei* (*Bgh*) (123). The MLA1-triggered immunity including host cell death response and disease resistance is fully retained in Arabidopsis mutant plants that are simultaneously impaired in the well-characterized defense-phytohormone pathways (ethylene, jasmonic acid, and salicylic acid). These data suggest the existence of an evolutionarily conserved and phytohormone-independent CNL-mediated immune mechanism. Similar to MLA1, co-acting Arabidopsis TNL pair, RPS4 (Resistance to *Pseudomonas Syringae* 4) and RRS1 (Resistance to *Ralstonia Solanacearum* 1) also confers resistance in cucumber (Cucurbitaceae), *N. benthamiana*, and tomato (Solanaceae) (124). Additionally the Arabidopsis *RPW8.1* and *RPW8.2* encoding truncated CNL-like proteins, confer resistance to powdery mildews in *N. tabacum* and *N. benthamiana* as in Arabidopsis (125). These results strongly imply that a subset of plant NLRs, despite their evolutionary separation, still follows a common principle in innate immunity.

Large-scale yeast-two-hybrid assays revealed that independently evolved effectors from different pathogen kingdoms (Gram-negative bacterium *Pseudomonas syringae* and obligate biotrophic oomycete *Hyaloperonospora arabidopsidis*) physically associate with the same host (Arabidopsis) proteins positioning at intersections of the host protein interaction network (126). Those proteins are designated “cellular hubs” and most of the tested hubs exhibit immune functions (126). Since the pair of RRS1-RPS4 detects three independently evolved effectors from different pathogen species (127), RRS1-RPS4 might monitor modification of a cellular hub targeted by three different effectors, enabling indirect detection. In this case, the expected cellular hub should be conserved in cucumber, *N. benthamiana*, tomato, and Arabidopsis. Indeed, such a conserved protein, EDS1, has been shown to be the target of two unrelated *Pseudomonas* effectors, suggesting that EDS1 might be a cellular hub guarded by RRS1-RPS4 (128, 129). Alternatively, RRS1-RPS4 might detect three cognate effectors by direct interaction as demonstrated with the co-acting rice RGA4-RGA5 (R-gene analog 4 and 5) pair, of which RGA5 physically interacts with two sequence-unrelated effectors of the rice blast fungus, *Magnaporthe oryzae* (10). At least for MLA, domain swap experiments between different MLA receptors that detect genetically diverse *Bgh* effectors, imply that recognition specificity is determined by the LRR domain (130). In addition, sequence comparison of ~20 different MLA receptors possessing different recognition specificities revealed that diversified selection sites are predominately accumulated at the surface of the concave side of a hypothetical model of the MLA LRR structure, indicative of a direct receptor-effector interaction at the LRR domain (82, 123). Although two cognate effectors for RRS1-RPS4 have been isolated from *Pseudomonas syringae* and *Ralstonia solanacearum*,

the effector of *Colletotrichum higginsianum* remains to be isolated (124, 131, 132). In addition, the cognate effector for MLA1 has not been isolated, yet. To examine how RRS1-RPS4 and MLA1 detect the cognate effectors (i.e., indirect or direct) in their native plant species and heterologous species will most likely require the identification of these effectors.

The existence of evolutionarily conserved immune mechanisms, especially downstream signaling mechanisms mediated by plant NLRs prompts a new question: how could a “conserved mechanism” have been retained during evolution despite the presumed emergence of pathogen counter arsenals that intercept this conserved signaling? It is unlikely that plant NLRs rely on a single conserved immune signaling pathway, which could be easily disarmed by pathogens. In an attempt to solve this paradox, we proposed that a single NLR could mediate immune responses via multiple signaling pathways (123), since it is difficult for pathogens to evolve an effector which simultaneously hampers multiple signaling pathways. Plants deploy NLRs at various sub-cellular locations for perception of effectors and/or initiation of immune signaling (see the review by Qi and Innes in the same issue). Thus it is tempting to speculate that entry nodes for NLR-signaling might exist at various sub-cellular locations in plants. Existence of multiple immune targets downstream of a single plant NLR (i.e., entry nodes for signaling pathways) would contribute to the robustness against rapidly evolving pathogens. This might also contribute to the conservation of plant NLR-signaling mechanism across plant species (123, 124), since a “foreign” NLR transferred with transgenic technology could have higher chances to find an entry node for downstream signaling in different plant species. Collectively, NLRs can be exploited for disease resistance breeding in a much wider range of plant species than previously thought.

HIJACKING OF PLANT NLR-MEDIATED IMMUNITY BY PATHOGENS

Transferring NLRs into different plant species might be a causal agent of unexpected disease, since some pathogens hijack plant NLR-mediated immunity for their proliferation. Based on nutrition modes, plant pathogens are classified into biotrophs, necrotrophs, and their intermediate, hemibiotrophs (133, 134). Biotrophic pathogens rely on living host cells for nutrition, whereas necrotrophic pathogens actively kill host cells to acquire nutrients. Hemibiotrophic pathogens are initially biotrophic and shift later to necrotrophy. Similar to biotrophic pathogens, many necrotrophic pathogens have a narrow host range infecting only one or few related plant species [summarized in Ref. (134)]. In addition to lytic enzymes and secondary metabolites, necrotrophic pathogens secrete toxins, which function as effectors to promote host cell death response. These toxins are often host-plant species-specific, thus called host-selective toxins and mediate effector-triggered susceptibility (ETS), which mirrors ETI to some extent (134).

It has been implicated that susceptibility to necrotrophic pathogens or sensitivity to their host-selective toxins is associated with NLR loci in diverse plant species such as Arabidopsis (135), sorghum (136), and wheat (32). These NLRs are likely maintained for resistance to other pathogens but targeted by virulent necrotrophs (137, 138). The ETS caused by the pathogenic fungus *Cochliobolus victoriae* in Arabidopsis is conditioned by a CNL,

LOV1 (Locus orchestrating victorin effects 1). LOV1 is activated upon direct binding of its cognate toxin, called victorin, to a host thioredoxin related to immunity (138). Since Arabidopsis, barley, bean, Brachypodium, oats, and rice are sensitive to victorin (137, 138), the underlying principle for victorin sensitivity is expected to be conserved across plant species. However it is likely that different NLRs other than LOV1 homologs monitor the victorin action in the respective plant species, since analysis of cereal DNA databases failed to detect obvious LOV1-like genes (137).

Resistance to host specific necrotrophs is mediated by PTI, detoxification of toxins, loss of toxin recognitions, or restricting toxin-mediated cell death response (139). Plant NLRs seem to play minor roles in resistance to necrotrophic pathogens. However Arabidopsis *RLM3* locus, which encodes a truncated TNL lacking NB and LRR domains, confers resistance to a broad range of necrotrophs by unknown mechanisms (106).

NLR-mediated susceptibility is also observed in animal-pathogen interactions. In mouse, an NLR designated NOD2 (nucleotide-binding oligomerization domain-containing protein 2) mediates susceptibility to *Yersinia pseudotuberculosis*, a gut-living bacterial pathogen that disrupts the interstitial barrier to invade host cells (140). Similar to plant pathogens, *Y. pseudotuberculosis* delivers a set of effectors through the type III secretion system for virulence. Among the effectors, YopJ, an acetyl-transferase, mediates the intestinal barrier dysfunction by redirecting NOD2 signaling. YopJ acetylates RICK (Rip-like interacting caspase-like apoptosis-regulatory PK), an immediate downstream target of NOD2, resulting in reduced binding affinity of RICK to NOD2. As a consequence, NOD2 is able to form a complex with caspase-1 other than RICK, resulting in higher IL-1 β production. This appears to increase the intestinal permeability for the bacterial invasion (140). Consistently, Crohn’s disease-associated NOD2 mutations found in ~20% of healthy white individuals are likely maintained to protect the host from systemic infection by common enteric bacteria (141). Similar to *Y. pseudotuberculosis*, *Salmonella enterica* subspecies trigger host immune responses (i.e., inflammation) to obtain a niche in the already established gut microbial community (142), suggesting that induction of inflammatory responses might be a common strategy for pathogenesis of enteric bacteria.

Thus host immune response is sometimes beneficial for pathogens in plants and animals. Plant pathogens might also exploit host immune mechanisms to compete with host associating microorganisms. Plants and animals deploy an array of NLRs to fight against pathogens, whilst deployment of NLRs must be tightly balanced. Otherwise, these could be exploited by pathogens. Such a constraint might also contribute to shaping the current repertoires of NLRs in plants and animals.

PLANT NLRs REGULATING TRANSCRIPTION

Apart from the host cell death response, NLR action is often associated with transcriptional changes. Here we review the emerging picture how NLRs actively participate in transcriptional regulation in plants.

It has been shown that transcriptional differences in resistant vs. susceptible interactions are rather quantitative than qualitative in several cases. This implies that NLRs amplify or sustain defense-related gene expression mediated by pattern-recognition receptors

(123, 143–147). Transcriptome analysis comparing gene expression mediated by a TNL and a CNL, each recognizing different effectors from the same pathogen, identified a common set of target genes. This indicates that the underlying mechanism for transcriptional regulation might be shared by both types of NLRs (148). Recent studies start to unravel how NLR action is converted to transcriptional reprogramming.

Recognition of the cognate effectors by plasma membrane-associated CNLs RPS2 (Resistance to *Pseudomonas Syringae* 2) and RPM1 (Resistance to *Pseudomonas Syringae* pv *Maculicola* 1) results in transcriptional reprogramming (144, 149), indicating a mechanism that relays signals from the plasma membrane to the nucleus. To uncouple ETI from PTI with a synchronized homogeneous cell population, Gao et al. (150) used an Arabidopsis protoplast system, in which the cognate effectors for RPS2 or RPM1 are expressed under an inducible promoter. Genome-wide transcriptome analysis with the protoplast system identified *WRKY46* as an early marker gene shared in RPS2- and RPM1-mediated signaling. Since chemical inhibitors affecting various Ca^{2+} channels suppressed the effector-mediated *WRKY46* promoter activation, potential involvement of Ca^{2+} -dependent protein kinases (CPKs) were examined. A genetic and biochemical screen identified a group of Ca^{2+} -dependent PKs (CPK 4, 5, 6, and 11), acting as signaling mediators between the NLRs and the transcription factors *WRKY8*, *WRKY28*, and *WRKY48*. Those *WRKYs* are proposed to regulate gene expression downstream of RPS2 and RPM1. Notably, another group of CPKs (CPK1 and 2) appears to be involved in host cell death response rather than transcriptional reprogramming, suggesting the existence of a bifurcated CPK-dependent signaling pathway mediating distinctive NLR-triggered immunity outputs (i.e., cell death and transcriptional reprogramming). However, it still remains unclear how RPS2 and RPM1 activate the set of CPKs. So far, a direct interaction between the CPKs and RPS2 or RPM1 was not detected (150). Potential players in the RPS2 or RPM1-CPK signaling cascade might be CNGCs (cyclic nucleotide-gated ion channels), a family of putative Ca^{2+} channels, some of which are involved in plant immunity (151, 152). However, the mechanistic link between NLRs and CNGCs remains unknown.

Signaling relay via a mediator such as CPK might be one mechanism by which membrane-associated NLRs regulate transcriptional reprogramming. However, recent work indicates that some soluble NLRs participate in an even shorter signaling pathway. Localization into the nucleus has been shown for several NLRs. When excluded from the nucleus by fusion with a nuclear exclusion signal, immunity mediated by the nucleo-cytoplasmic barley MLA10 (CNL) is compromised (86). Similarly, nuclear exclusion of the nucleo-cytoplasmic N (TNL) resulted in compromised immunity in *N. benthamiana* (153). Disruption of the nuclear localization sequence of Arabidopsis RPS4 (TNL) resulted in impaired immunity toward *Pst* DC3000 expressing its cognate effector (154). Together, these data point toward a nuclear function of a subset of NLRs.

Recent studies have started to elucidate the activity of nuclear-localizing NLRs. Following up on the demonstration that barley MLA10 interacts with HvWRKY1 and HvWRKY2, negative regulators of immunity, Chang et al. (155) elucidated the mechanism by which this interaction results in immunity. They

demonstrated that the CC domain of barley MLA10 interacts not only with the aforementioned repressors but also with the transcriptional factor HvMYB6, a positive regulator of immunity. Strikingly, only the active form of MLA10 is able to bind HvMYB6, which is sequestered by HvWRKY1 in the absence of the activated MLA10. The interaction through the MLA CC domain prevents WRKY1 from interacting with HvMYB6, thereby allowing HvMYB6 binding to the corresponding *cis*-element. The MLA10-HvMYB6 complex, in turn, greatly enhances transcription downstream of the *cis*-element compared to HvMYB6 alone in a transient assay. While this interaction greatly adds to our understanding of MLA function in barley, it cannot explain the conserved function of MLA1 in Arabidopsis (123), since HvMYB6 is a highly monocot-specific transcription factor (155).

Pb1, a rice CNL, has also recently been shown to interact with the transcription factor OsWRKY45, likely leading to transcriptional reprogramming. However, in contrast to the MLA-HvMYB6 interaction, the transcriptional activity is regulated via OsWRKY45 abundance, since Pb1 protects OsWRKY45 from degradation upon pathogen attack (63).

A third example aiding in our understanding of NLR nuclear activity is the interaction of N with the transcription factor SPL6 (SQUAMOSA PROMOTER BINDING PROTEIN-LIKE 6) in *N. benthamiana* (156). The association of N and SPL6 at subnuclear bodies occurs only in the presence of the cognate effector. A genetic requirement for SPL6 was shown in *N. benthamiana* for N-mediated disease resistance as well as in *A. thaliana* for RPS4-mediated immunity. A number of RPS4-mediated defense responsive genes are differentially regulated upon *AtSPL6* silencing (156).

Close re-examination of yeast-two-hybrid data generated by Mukhtar et al. (126) provides further support of NLR-transcription factor interaction as a more common mechanism of NLR actions. Mukhtar et al. (126) tested interactions using as bait N-terminal domains of Arabidopsis CNLs and TNLs, which have previously been demonstrated to function as minimal signaling domains in some cases (94, 95), and as prey full-length constructs of ~8,000 immune-related genes including transcriptional regulators. Strikingly, of those NLRs showing interactions, the majority interacted with one or more transcriptional regulators. Furthermore, these interactions could be found for both CNLs and TNLs. Interaction between transcriptional regulators and NLRs has already been demonstrated too, for example the interaction of the transcriptional co-repressor TPR1 (Topless-related 1) with the Arabidopsis TNL SNC1 (157).

Taken together, these studies draw an emerging picture in which nuclear localized NLRs mediate transcriptional reprogramming via interaction with transcription factors in various plants species. Interaction with transcriptional regulators appears not to be limited to one subclass only or to just a few specialized NLRs. Instead, this type of interactions might be a more common phenomenon, implying a possible general mechanism of direct regulation of transcriptional reprogramming via plant NLRs. Transcriptional regulation via NLRs also occurs in animals. Two well documented NLRs, CIITA and NLRC5, both regulate a set of genes, MHC class I and class II genes, by recognizing specific *cis*-elements and recruiting a group of transcriptional regulators (158, 159). The protein

complex formed is known as enhanceosome (160, 161). It remains to be proven whether NLRs in plants also form such large order complexes or modulate transcription by interacting with only a few transcriptional regulators at a time.

STRUCTURAL INSIGHT INTO AUTO-INHIBITION MECHANISM OF NLRs

Very recently the first crystal structure of an NLR monomer (mouse NLRC4) in its inactive state was resolved (162). The structure revealed the presence of multiple “security locks,” coordinated by several and distinctive intra-domain interactions to keep the receptor in an inactive state. These locks prevent the receptor from homo-oligomerization driven by associations through the central domain. The observed intra-domain interactions cluster in close proximity of the potential ligand-binding pocket, which is primarily shaped by the LRR domain together with the other domains (162). Thus, it is proposed that ligand-binding at the pocket could release the multiple locks all at once, enabling a subsequent conformational change of the receptor (e.g., ADP-ATP exchange, oligomerization). Interestingly, the structure and the experimental evidence suggest that ADP-binding at the P-loop motif also contributes to auto-inhibition of the receptor. However, the inhibition mechanism seems to be distinctive from that mediated by the other intra-domain interactions, since the position of ADP in the crystal is distant from the pocket (162). Unlike animal NLRs, plant NLRs lack the HD2 sub-domain (also known as ARC3 sub-domain) in the central NB-ARC domain (14), and general applicability of the central domain mediated homo-oligomerization of plant NLRs upon receptor activation is unclear.

The LRR domain of plant NLRs is also involved in forming “security locks” by cooperating with the other domains in the absence of pathogens (93, 163–166). A structure-function analysis combined with docking simulations of structural models of the NB-ARC and the LRR domains identified regions that determine intra-domain interactions in two CNLs, Rx1 and Gpa2 (166). At least in the case of these two highly homologous CNLs, the association between the N-terminal repeats of the LRR domain and a small region of the ARC2 domain are sufficient to keep these NLRs in an inactive state, whilst the rest of C-terminal repeats of the LRR domain act as the major determinant of the effector recognitions

(166). Thus it is proposed that detection of the cognate effectors at the C-terminal repeats of the LRR domain disrupts the intra-domain interaction to activate the receptor (166).

CONCLUSION AND PERSPECTIVE

Over the past few decades, many NLRs and NLR-like proteins were isolated from plants and animals and their functions have been extensively studied. The development of new technologies has further accelerated research on NLR biology. For example, deep sequencing technology offers more opportunities to conduct comparative genome-wide analyses of NLRs in various species. Whole-transcriptome analysis at single transcript level combined with ChIP-seq analysis (chromatin immunoprecipitation followed by sequencing) allows to uncover underlying mechanisms for NLR functions in the nucleus. Furthermore, structural biology provides in-depth understanding of mechanistic insights into NLR actions. Nevertheless, a balanced combination of those technologies and “classical” genetics and biochemical studies are important to unravel the principle of NLR functions.

As we discussed above, a plant NLR might initiate downstream signaling by connecting to multiple signaling targets rather than through a single evolutionarily conserved target. Despite a lack of direct experimental evidence to date, putative compartment-specific activities of plant NLRs, particularly in the cytoplasm and nucleus (129, 167), suggest that a single NLR interacts with structurally different downstream components to initiate immune responses in different compartments. Thus, it might be possible that a second, third, or even more downstream signaling layers exist for a given NLR, including several interacting components that might constitute “as a whole” the downstream innate immune mechanism. Finally, we imagine that comprehensive knowledge of NLR actions would allow the design of synthetic NLRs in order to control pathogens and manipulate NLR functions even beyond innate immunity.

ACKNOWLEDGMENTS

This work was supported by the German Research Foundation in the Collaborative Research Centre SFB670 (Saskia Vernaldi and Takaki Maekawa), the Franco-German University (Florence Jacob), and the University of Evry (Florence Jacob).

REFERENCES

- Maekawa T, Kufer TA, Schulze-Lefert P. NLR functions in plant and animal immune systems: so far and yet so close. *Nat Immunol* (2011) **12**:817–26. doi:10.1038/ni.2083
- Boller T, Felix G. A renaissance of elicitors: perception of microbe-associated molecular patterns and danger signals by pattern-recognition receptors. *Annu Rev Plant Biol* (2009) **60**:379–406. doi:10.1146/annurev.arplant.57.032905.105346
- Rafiqi M, Ellis JG, Ludowici VA, Hardham AR, Dodds PN. Challenges and progress towards understanding the role of effectors in plant-fungal interactions. *Curr Opin Plant Biol* (2012) **15**:477–82. doi:10.1016/j.pbi.2012.05.003
- Feng F, Zhou J-M. Plant-bacterial pathogen interactions mediated by type III effectors. *Curr Opin Plant Biol* (2012) **15**:469–76. doi:10.1016/j.pbi.2012.03.004
- Chisholm ST, Coaker G, Day B, Staskawicz BJ. Host-microbe interactions: shaping the evolution of the plant immune response. *Cell* (2006) **124**:803–14. doi:10.1016/j.cell.2006.02.008
- Jones JDG, Dangl JL. The plant immune system. *Nature* (2006) **444**:323–9. doi:10.1038/nature05286
- DeYoung BJ, Innes RW. Plant NBS-LRR proteins in pathogen sensing and host defense. *Nat Immunol* (2006) **7**:1243–9. doi:10.1038/ni1410
- van der Hoorn RAL, Kamoun S. From Guard to Decoy: a new model for perception of plant pathogen effectors. *Plant Cell* (2008) **20**:2009–17. doi:10.1105/tpc.108.060194
- Takken FLW, Govers A. How to build a pathogen detector: structural basis of NB-LRR function. *Curr Opin Plant Biol* (2012) **15**:375–84. doi:10.1016/j.pbi.2012.05.001
- Cesari S, Thilliez G, Ribot C, Chalvon V, Michel C, Jauneau A, et al. The rice resistance protein pair RGA4/RGA5 recognizes the *Magnaporthe oryzae* effectors AVR-Pia and AVR1-CO39 by direct binding. *Plant Cell* (2013) **25**:1463–81. doi:10.1105/tpc.112.107201
- van der Biezen EA, Jones JD. Plant disease-resistance proteins and the gene-for-gene concept. *Trends Biochem Sci* (1998) **23**:454–6. doi:10.1016/S0968-0004(98)01311-5
- Koonin EV, Aravind L. The NACHT family – a new group of predicted NTPases implicated in apoptosis and MHC transcription activation. *Trends Biochem Sci* (2000) **25**:223–4. doi:10.1016/S0968-0004(00)01577-2
- Takken FL, Albrecht M, Tameling WI. Resistance proteins: molecular switches of plant defence. *Curr Opin Plant Biol* (2006) **9**:383–90. doi:10.1016/j.pbi.2006.05.009

14. van Ooijen G, van den Burg HA, Cornelissen BJC, Takken FLW. Structure and function of resistance proteins in solanaceous plants. *Annu Rev Phytopathol* (2007) **45**:43–72. doi:10.1146/annurev.phyto.45.062806.094430
15. Ossowski S, Schneeberger K, Clark RM, Lanz C, Warthmann N, Weigel D. Sequencing of natural strains of *Arabidopsis thaliana* with short reads. *Genome Res* (2008) **18**:2024–33. doi:10.1101/gr.080200.108
16. Clark RM, Schweikert G, Toomajian C, Ossowski S, Zeller G, Shinn P, et al. Common sequence polymorphisms shaping genetic diversity in *Arabidopsis thaliana*. *Science* (2007) **317**:338–42. doi:10.1126/science.1138632
17. Lange C, Hemmrich G, Klostermeier UC, López-Quintero JA, Miller DJ, Rahn T, et al. Defining the origins of the NOD-like receptor system at the base of animal evolution. *Mol Biol Evol* (2011) **28**:1687–702. doi:10.1093/molbev/msq349
18. Meyers BC, Kozik A, Griego A, Kuang H, Michelmore RW. Genome-wide analysis of NBS-LRR-encoding genes in *Arabidopsis*. *Plant Cell* (2003) **15**:809–34. doi:10.1105/tpc.009308
19. Zhou T, Wang Y, Chen J-Q, Araki H, Jing Z, Jiang K, et al. Genome-wide identification of NBS genes in japonica rice reveals significant expansion of divergent non-TIR NBS-LRR genes. *Mol Genet Genomics* (2004) **271**:402–15. doi:10.1007/s00438-004-0990-z
20. Zhang Q, Zmasek CM, Godzik A. Domain architecture evolution of pattern-recognition receptors. *Immunogenetics* (2010) **62**:263–72. doi:10.1007/s00251-010-0428-1
21. Fei Q, Xia R, Meyers BC. Phased, secondary, small interfering RNAs in posttranscriptional regulatory networks. *Plant Cell* (2013) **25**:2400–15. doi:10.1105/tpc.113.114652
22. Li F, Pignatta D, Bendix C, Brunkard JO, Cohn MM, Tung J, et al. MicroRNA regulation of plant innate immune receptors. *Proc Natl Acad Sci USA* (2012) **109**:1790–5. doi:10.1073/pnas.1118282109
23. Shivaprasad PV, Chen H-M, Patel K, Bond DM, Santos BACM, Baulcombe DC. A microRNA superfamily regulates nucleotide-binding site-leucine-rich repeats and other mRNAs. *Plant Cell* (2012) **24**:859–74. doi:10.1105/tpc.111.095380
24. McDowell JM, Simon SA. Molecular diversity at the plant–pathogen interface. *Dev Comp Immunol* (2008) **32**:736–44. doi:10.1016/j.dci.2007.11.005
25. Yue J-X, Meyers BC, Chen J-Q, Tian D, Yang S. Tracing the origin and evolutionary history of plant nucleotide-binding site-leucine-rich repeat (NBS-LRR) genes. *New Phytol* (2012) **193**:1049–63. doi:10.1111/j.1469-8137.2011.04006.x
26. Hedges SB, Kumar S. *The Time-Tree of Life Book*. Oxford University Press (2009). Available at: <http://www.timetree.org/book.php>
27. Chaw S-M, Chang C-C, Chen H-L, Li W-H. Dating the monocot-dicot divergence and the origin of core eudicots using whole chloroplast genomes. *J Mol Evol* (2004) **58**:424–41. doi:10.1007/s00239-003-2564-9
28. Xue J-Y, Wang Y, Wu P, Wang Q, Yang L-T, Pan X-H, et al. A primary survey on bryophyte species reveals two novel classes of nucleotide-binding site (NBS) genes. *PLoS One* (2012) **7**:e36700. doi:10.1371/journal.pone.0036700
29. Kim J, Lim CJ, Lee B-W, Choi J-P, Oh S-K, Ahmad R, et al. A genome-wide comparison of NB-LRR type of resistance gene analogs (RGA) in the plant kingdom. *Mol Cells* (2012) **33**:385–92. doi:10.1007/s10059-012-0003-8
30. Heller G, Adomas A, Li G, Osborne J, van Zyl L, Sederoff R, et al. Transcriptional analysis of *Pinus sylvestris* roots challenged with the ectomycorrhizal fungus *Laccaria bicolor*. *BMC Plant Biol* (2008) **8**:19. doi:10.1186/1471-2229-8-19
31. Tarr DEK, Alexander HM. TIR-NBS-LRR genes are rare in monocots: evidence from diverse monocot orders. *BMC Res Notes* (2009) **2**:197. doi:10.1186/1756-0500-2-197
32. Faris JD, Zhang Z, Lu H, Lu S, Reddy L, Cloutier S, et al. A unique wheat disease resistance-like gene governs effector-triggered susceptibility to necrotrophic pathogens. *Proc Natl Acad Sci USA* (2010) **107**:13544–9. doi:10.1073/pnas.1004090107
33. Guo Y-L, Fitz J, Schneeberger K, Ossowski S, Cao J, Weigel D. Genome-wide comparison of nucleotide-binding site-leucine-rich repeat-encoding genes in *Arabidopsis*. *Plant Physiol* (2011) **157**:757–69. doi:10.1104/pp.111.181990
34. Li J, Ding J, Zhang W, Zhang Y, Tang P, Chen J-Q, et al. Unique evolutionary pattern of numbers of gramineous NBS-LRR genes. *Mol Genet Genomics* (2010) **283**:427–38. doi:10.1007/s00438-010-0527-6
35. Mun J-H, Yu H-J, Park S, Park B-S. Genome-wide identification of NBS-encoding resistance genes in *Brassica rapa*. *Mol Genet Genomics* (2009) **282**:617–31. doi:10.1007/s00438-009-0492-0
36. Porter BW, Paidi M, Ming R, Alam M, Nishijima WT, Zhu YJ. Genome-wide analysis of *Carica papaya* reveals a small NBS resistance gene family. *Mol Genet Genomics* (2009) **281**:609–26. doi:10.1007/s00438-009-0434-x
37. Wan H, Yuan W, Bo K, Shen J, Pang X, Chen J. Genome-wide analysis of NBS-encoding disease resistance genes in *Cucumis sativus* and phylogenetic study of NBS-encoding genes in Cucurbitaceae crops. *BMC Genomics* (2013) **14**:109. doi:10.1186/1471-2164-14-109
38. Kang YJ, Kim KH, Shim S, Yoon MY, Sun S, Kim MY, et al. Genome-wide mapping of NBS-LRR genes and their association with disease resistance in soybean. *BMC Plant Biol* (2012) **12**:139. doi:10.1186/1471-2229-12-139
39. Ameline-Torregrosa C, Wang B-B, O'Bleness MS, Deshpande S, Zhu H, Roe B, et al. Identification and characterization of nucleotide-binding site-leucine-rich repeat genes in the model plant *Medicago truncatula*. *Plant Physiol* (2008) **146**:5–21. doi:10.1104/pp.107.104588
40. Kohler A, Rinaldi C, Duplessis S, Baucher M, Geelen D, Duchaussoy F, et al. Genome-wide identification of NBS resistance genes in *Populus trichocarpa*. *Plant Mol Biol* (2008) **66**:619–36. doi:10.1007/s11103-008-9293-9
41. Jupe F, Pritchard L, Etherington GJ, MacKenzie K, Cock PJ, Wright F, et al. Identification and localisation of the NB-LRR gene family within the potato genome. *BMC Genomics* (2012) **13**:75. doi:10.1186/1471-2164-13-75
42. Yang S, Zhang X, Yue J-X, Tian D, Chen J-Q. Recent duplications dominate NBS-encoding gene expansion in two woody species. *Mol Genet Genomics* (2008) **280**:187–98. doi:10.1007/s00438-008-0355-0
43. Hibino T, Loza-Coll M, Messier C, Majeske AJ, Cohen AH, Terwilliger DP, et al. The immune gene repertoire encoded in the purple sea urchin genome. *Dev Biol* (2006) **300**:349–65. doi:10.1016/j.ydbio.2006.08.065
44. Rast JP, Smith LC, Loza-Coll M, Hibino T, Litman GW. Genomic insights into the immune system of the sea urchin. *Science* (2006) **314**:952–6. doi:10.1126/science.1134301
45. Staal J, Dixelius C. Tracing the ancient origins of plant innate immunity. *Trends Plant Sci* (2007) **12**:334–42. doi:10.1016/j.tplants.2007.06.014
46. Rairdan G, Moffett P. Brothers in arms? Common and contrasting themes in pathogen perception by plant NB-LRR and animal NACHT-LRR proteins. *Microbes Infect* (2007) **9**:677–86. doi:10.1016/j.micinf.2007.01.019
47. Ausubel FM. Are innate immune signaling pathways in plants and animals conserved? *Nat Immunol* (2005) **6**:973–9. doi:10.1101/gr.454902
48. Meyers BC, Dickerman AW, Michelmore RW, Sivaramakrishnan S, Sobral BW, Young ND. Plant disease resistance genes encode members of an ancient and diverse protein family within the nucleotide-binding superfamily. *Plant J* (1999) **20**:317–32. doi:10.1046/j.1365-3113.1999.00606.x
49. Cannon SB, Zhu H, Baumgarten AM, Spangler R, May G, Cook DR, et al. Diversity, distribution, and ancient taxonomic relationships within the TIR and non-TIR NBS-LRR resistance gene subfamilies. *J Mol Evol* (2002) **54**:548–62. doi:10.1007/s0023901-0057-2
50. Liu J-J, Ekramoddoullah AKM. The CC-NBS-LRR subfamily in *Pinus monticola*: targeted identification, gene expression, and genetic linkage with resistance to *Cronartium ribicola*. *Phytopathology* (2007) **97**:728–36. doi:10.1094/PHYTO-97-6-0728
51. Collier SM, Hamel L-P, Moffett P. Cell death mediated by the N-terminal domains of a unique and highly conserved class of NB-LRR protein. *Mol Plant Microbe Interact* (2011) **24**:918–31. doi:10.1094/MPMI-03-11-0050
52. Tian Y, Fan L, Thureau T, Jung C, Cai D. The absence of TIR-type resistance gene analogues in the sugar beet (*Beta vulgaris* L.) genome. *J Mol Evol* (2004) **58**:40–53. doi:10.1007/s00239-003-2524-4

53. Peart JR, Mestre P, Lu R, Malcuit I, Baulcombe DC. NRG1, a CC-NB-LRR protein, together with N, a TIR-NB-LRR protein, mediates resistance against tobacco mosaic virus. *Curr Biol* (2005) **15**:968–73. doi:10.1016/j.cub.2005.04.053
54. Bonardi V, Tang S, Stallmann A, Roberts M, Cherkis K, Dangl JL. Expanded functions for a family of plant intracellular immune receptors beyond specific recognition of pathogen effectors. *Proc Natl Acad Sci USA* (2011) **108**:16463–8. doi:10.1073/pnas.1113726108
55. Roberts M, Tang S, Stallmann A, Dangl JL, Bonardi V. Genetic requirements for signaling from an autoactive plant NB-LRR intracellular innate immune receptor. *PLoS Genet* (2013) **9**:e1003465. doi:10.1371/journal.pgen.1003465
56. Wiermer M, Feys BJ, Parker JE. Plant immunity: the EDS1 regulatory node. *Curr Opin Plant Biol* (2005) **8**:383–9. doi:10.1016/j.pbi.2005.05.010
57. Sanseverino W, Hermoso A, D'Alessandro R, Vlasova A, Andolfo G, Frusciante L, et al. PRGdb 2.0: towards a community-based database model for the analysis of R-genes in plants. *Nucleic Acids Res* (2013) **41**:D1167–71. doi:10.1093/nar/gks1183
58. Wang X, Kuang T, He Y. Conservation between higher plants and the moss *Physcomitrella patens* in response to the phytohormone abscisic acid: a proteomics analysis. *BMC Plant Biol* (2010) **10**:192. doi:10.1186/1471-2229-10-192
59. Denancé N, Sánchez-Vallet A, Goffner D, Molina A. Disease resistance or growth: the role of plant hormones in balancing immune responses and fitness costs. *Front Plant Sci* (2013) **4**:155. doi:10.3389/fpls.2013.00155
60. Johnk N, Hietala AM, Fossdal CG, Collinge DB, Newman M-A. Defense-related genes expressed in Norway spruce roots after infection with the root rot pathogen *Ceratobasidium bicorne* (anamorph: *Rhizoctonia* sp.). *Tree Physiol* (2005) **25**:1533–43. doi:10.1093/treephys/25.12.1533
61. Liu J-J, Ekramoddoullah AKM. Genomic organization, induced expression and promoter activity of a resistance gene analog (PmTNL1) in western white pine (*Pinus monticola*). *Planta* (2011) **233**:1041–53. doi:10.1007/s00425-011-1353-8
62. Hayashi N, Inoue H, Kato T, Funao T, Shiota M, Shimizu T, et al. Durable panicle blast-resistance gene Pb1 encodes an atypical CC-NBS-LRR protein and was generated by acquiring a promoter through local genome duplication. *Plant J* (2010) **64**:498–510. doi:10.1111/j.1365-313X.2010.04348.x
63. Inoue H, Hayashi N, Matsushita A, Xinqiong L, Nakayama A, Sugano S, et al. Blast resistance of CC-NB-LRR protein Pb1 is mediated by WRKY45 through protein-protein interaction. *Proc Natl Acad Sci USA* (2013) **110**:9577–82. doi:10.1073/pnas.1222155110
64. Shimono M, Sugano S, Nakayama A, Jiang C-J, Ono K, Toki S, et al. Rice WRKY45 plays a crucial role in benzothiadiazole-inducible blast resistance. *Plant Cell* (2007) **19**:2064–76. doi:10.1105/tpc.106.046250
65. Zhao B, Lin X, Poland J, Trick H, Leach J, Hulbert S. A maize resistance gene functions against bacterial streak disease in rice. *Proc Natl Acad Sci USA* (2005) **102**:15383–8. doi:10.1073/pnas.0503023102
66. Grant JJ, Chini A, Basu D, Loake GJ. Targeted activation tagging of the *Arabidopsis* NBS-LRR gene, ADR1, conveys resistance to virulent pathogens. *Mol Plant Microbe Interact* (2003) **16**:669–80. doi:10.1094/MPMI.2003.16.8.669
67. Chini A, Grant JJ, Seki M, Shinzaki K, Loake GJ. Drought tolerance established by enhanced expression of the CC-NBS-LRR gene, ADR1, requires salicylic acid, EDS1 and ABI1. *Plant J* (2004) **38**:810–22. doi:10.1111/j.1365-313X.2004.02086.x
68. Gabriëls SHEJ, Vossen JH, Ekenegren SK, van Ooijen G, Abdel-Halim AM, van den Berg GCM, et al. An NB-LRR protein required for HR signalling mediated by both extra- and intracellular resistance proteins. *Plant J* (2007) **50**:14–28. doi:10.1111/j.1365-313X.2007.03027.x
69. Miller RN, Bertoli DJ, Baurens FC, Santos CM, Alves PC, Martins NF, et al. Analysis of non-TIR NBS-LRR resistance gene analogs in *Musa acuminata* Colla: isolation, RFLP marker development, and physical mapping. *BMC Plant Biol* (2008) **8**:15. doi:10.1186/1471-2229-8-15
70. Ting JP-Y, Davis BK. CATERPILLER: a novel gene family important in immunity, cell death, and diseases. *Annu Rev Immunol* (2005) **23**:387–414. doi:10.1146/annurev.immunol.23.021704.115616
71. Zhang P, Dixon M, Zucchelli M, Hambiliki F, Levkov L, Hovatta O, et al. Expression analysis of the NLRP gene family suggests a role in human preimplantation development. *PLoS One* (2008) **3**:e2755. doi:10.1371/journal.pone.0002755
72. Tian X, Pascal G, Monget P. Evolution and functional divergence of NLRP genes in mammalian reproductive systems. *BMC Evol Biol* (2009) **9**:202. doi:10.1186/1471-2148-9-202
73. Hamatani T, Falco G, Carter MG, Akutsu H, Stagg CA, Sharov AA, et al. Age-associated alteration of gene expression patterns in mouse oocytes. *Hum Mol Genet* (2004) **13**:2263–78. doi:10.1093/hmg/ddh241
74. Marone D, Russo M, Laidò G, De Leonardi A, Mastrangelo A. Plant nucleotide binding site-leucine-rich repeat (NBS-LRR) genes: active guardians in host defense responses. *Int J Mol Sci* (2013) **14**:7302–26. doi:10.3390/ijms14047302
75. Michelmore RW, Meyers BC. Clusters of resistance genes in plants evolve by divergent selection and a birth-and-death process. *Genome Res* (1998) **8**:1113–30. doi:10.1101/gr.8.11.1113
76. Chen Q, Han Z, Jiang H, Tian D, Yang S. Strong positive selection drives rapid diversification of R-genes in *Arabidopsis* relatives. *J Mol Evol* (2010) **70**:137–48. doi:10.1007/s00239-009-9316-4
77. Mondragón-Palomino M, Meyers BC, Michelmore RW, Gaut BS. Patterns of positive selection in the complete NBS-LRR gene family of *Arabidopsis thaliana*. *Genome Res* (2002) **12**:1305–15. doi:10.1101/gr.159402
78. Nobuta K, Ashfield T, Kim S, Innes RW. Diversification of non-TIR class NB-LRR genes in relation to whole-genome duplication events in *Arabidopsis*. *Mol Plant Microbe Interact* (2005) **18**:103–9. doi:10.1094/MPMI-18-0103
79. Innes RW, Ameline-Torregrosa C, Ashfield T, Cannon E, Cannon SB, Chacko B, et al. Differential accumulation of retroelements and diversification of NB-LRR disease resistance genes in duplicated regions following polyploidy in the ancestor of soybean. *Plant Physiol* (2008) **148**:1740–59. doi:10.1104/pp.108.127902
80. Ashfield T, Egan AN, Pfeil BE, Chen NWG, Podicheti R, Ratnaparkhe MB, et al. Evolution of a complex disease resistance gene cluster in diploid *Phaseolus* and tetraploid *Glycine*. *Plant Physiol* (2012) **159**:336–54. doi:10.1104/pp.112.195040
81. Kuang H, Woo S-S, Meyers BC, Nevo E, Michelmore RW. Multiple genetic processes result in heterogeneous rates of evolution within the major cluster disease resistance genes in lettuce. *Plant Cell* (2004) **16**:2870–94. doi:10.1105/tpc.104.025502
82. Seeholzer S, Tsuchimatsu T, Jordan T, Bieri S, Pajonk S, Yang W, et al. Diversity at the *Mla* powdery mildew resistance locus from cultivated barley reveals sites of positive selection. *Mol Plant Microbe Interact* (2010) **23**:497–509. doi:10.1094/MPMI-23-4-0497
83. Bomblies K, Weigel D. Hybrid necrosis: autoimmunity as a potential gene-flow barrier in plant species. *Nat Rev Genet* (2007) **8**:382–93. doi:10.1038/nrg2082
84. Marcotte EM, Pellegrini M, Ng H-L, Rice DW, Yeates TO, Eisenberg D. Detecting protein function and protein-protein interactions from genome sequences. *Science* (1999) **285**:751–3. doi:10.1126/science.285.5428.751
85. Deslandes L, Olivier J, Theuillères F, Hirsch J, Feng DX, Bittner-Eddy P, et al. Resistance to *Ralstonia solanacearum* in *Arabidopsis thaliana* is conferred by the recessive RRS1-R gene, a member of a novel family of resistance genes. *Proc Natl Acad Sci USA* (2002) **99**:2404–9. doi:10.1073/pnas.032485099
86. Shen Q-H, Saijo Y, Mauch S, Biskup C, Bieri S, Keller B, et al. Nuclear activity of *MLA* immune receptors links isolate-specific and basal disease-resistance responses. *Science* (2007) **315**:1098–1103. doi:10.1126/science.1136372
87. Leister RT, Dahlbeck D, Day B, Li Y, Chesnokova O, Staskawicz BJ. Molecular genetic evidence for the role of SGT1 in the intramolecular complementation of Bs2 protein activity in *Nicotiana glauca*. *Plant Cell* (2005) **17**:1268–78. doi:10.1105/tpc.104.029637
88. Moffett P, Farnham G, Peart J, Baulcombe DC. Interaction between domains of a plant NBS-LRR protein in disease resistance-related cell death. *EMBO J* (2002) **21**:4511–9. doi:10.1093/emboj/cdf453

89. Gutierrez JR, Balmuth AL, Ntoukakis V, Mucyn TS, Gimenez-Ibanez S, Jones AME, et al. Prf immune complexes of tomato are oligomeric and contain multiple Pto-like kinases that diversify effector recognition. *Plant J* (2010) **61**:507–18. doi:10.1111/j.1365-313X.2009.04078.x
90. Tuskan GA, DiFazio S, Jansson S, Bohlmann J, Grigoriev I, Hellsten U, et al. The genome of black cottonwood, *Populus trichocarpa* (Torr. & Gray). *Science* (2006) **313**:1596–604. doi:10.1126/science.1128691
91. Sinapidou E, Williams K, Nott L, Bahkt S, Tör M, Crute I, et al. Two TIR:NB:LRR genes are required to specify resistance to *Peronospora parasitica* isolate Cala2 in *Arabidopsis*. *Plant J* (2004) **38**:898–909. doi:10.1111/j.1365-313X.2004.02099.x
92. Mestre P, Baulcombe DC. Elicitor-mediated oligomerization of the tobacco N disease resistance protein. *Plant Cell* (2006) **18**:491–501. doi:10.1105/tpc.105.037234
93. Ade J, DeYoung BJ, Golstein C, Innes RW. Indirect activation of a plant nucleotide binding site-leucine-rich repeat protein by a bacterial protease. *Proc Natl Acad Sci U S A* (2007) **104**:2531–6. doi:10.1073/pnas.0608779104
94. Bernoux M, Ve T, Williams S, Warren C, Hatters D, Valkov E, et al. Structural and functional analysis of a plant resistance protein TIR domain reveals interfaces for self-association, signaling, and autoregulation. *Cell Host Microbe* (2011) **9**:200–11. doi:10.1016/j.chom.2011.02.009
95. Maekawa T, Cheng W, Spiridon LN, Töller A, Lukasik E, Saijo Y, et al. Coiled-coil domain-dependent homodimerization of intracellular barley immune receptors defines a minimal functional module for triggering cell death. *Cell Host Microbe* (2011) **9**:187–99. doi:10.1016/j.chom.2011.02.008
96. Meyers BC, Morgante M, Michelmore RW. TIR-X and TIR-NBS proteins: two new families related to disease resistance TIR-NBS-LRR proteins encoded in *Arabidopsis* and other plant genomes. *Plant J* (2002) **32**:77–92. doi:10.1046/j.1365-313X.2002.01404.x
97. Bai J, Pennill LA, Ning J, Lee SW, Ramalingam J, Webb CA, et al. Diversity in nucleotide binding site-leucine-rich repeat genes in cereals. *Genome Res* (2002) **12**:1871–84. doi:10.1101/gr.454902
98. Nandety RS, Caplan JL, Cavanaugh K, Perroud B, Wroblewski T, Michelmore RW, et al. The role of TIR-NBS and TIR-X proteins in plant basal defense responses. *Plant Physiol* (2013) **162**:1459–72. doi:10.1104/pp.113.219162
99. Zbierzak AM, Porfirova S, Griebel T, Melzer M, Parker JE, Dörmann P. A TIR-NBS protein encoded by *Arabidopsis* Chilling Sensitive 1 (CHS1) limits chloroplast damage and cell death at low temperature. *Plant J* (2013) **75**:539–52. doi:10.1111/tpj.12219
100. Xiao S, Ellwood S, Calis O, Patrick E, Li T, Coleman M, et al. Broad-spectrum mildew resistance in *Arabidopsis thaliana* mediated by RPW8. *Science* (2001) **291**:118–20. doi:10.1126/science.291.5501.118
101. Xiao S, Calis O, Patrick E, Zhang G, Charoenwattana P, Muskett P, et al. The atypical resistance gene, RPW8, recruits components of basal defence for powdery mildew resistance in *Arabidopsis*. *Plant J* (2005) **42**:95–110. doi:10.1111/j.1365-313X.2005.02356.x
102. Xiao S, Emerson B, Ratanasut K, Patrick E, O'Neill C, Bancroft I, et al. Origin and maintenance of a broad-spectrum disease resistance locus in *Arabidopsis*. *Mol Biol Evol* (2004) **21**:1661–72. doi:10.1093/molbev/msh165
103. Whitham S, Dinesh-Kumar SP, Choi D, Hehl R, Corr C, Baker B. The product of the tobacco mosaic virus resistance gene N: similarity to toll and the interleukin-1 receptor. *Cell* (1994) **78**:1101–15. doi:10.1016/0092-8674(94)90283-6
104. Lawrence GJ, Finnegan EJ, Ayliffe MA, Ellis JG. The L6 gene for flax rust resistance is related to the *Arabidopsis* bacterial resistance gene RPS2 and the tobacco viral resistance gene N. *Plant Cell* (1995) **7**:1195–206. doi:10.1105/tpc.7.8.1195
105. Jordan T, Schornack S, Lahaye T. Alternative splicing of transcripts encoding Toll-like plant resistance proteins – what's the functional relevance to innate immunity? *Trends Plant Sci* (2002) **7**:392–8. doi:10.1016/S1360-1385(02)02311-7
106. Staal J, Kaliff M, Dewaele E, Persson M, Dixelius C. RLM3, a TIR domain encoding gene involved in broad-range immunity of *Arabidopsis* to necrotrophic fungal pathogens. *Plant J* (2008) **55**:188–200. doi:10.1111/j.1365-313X.2008.03503.x
107. Tameling WIL, Vossen JH, Albrecht M, Lengauer T, Berden JA, Haring MA, et al. Mutations in the NB-ARC domain of I-2 that impair ATP hydrolysis cause autoactivation. *Plant Physiol* (2006) **140**:1233–45. doi:10.1104/pp.105.073510
108. Kanzaki H, Yoshida K, Saitoh H, Fujisaki K, Hirabuchi A, Alaux L, et al. Arms race co-evolution of *Magnaporthe oryzae* AVR-Pik and rice Pik genes driven by their physical interactions. *Plant J* (2012) **72**:894–907. doi:10.1111/j.1365-313X.2012.05110.x
109. Noutoshi Y, Ito T, Seki M, Nakashita H, Yoshida S, Marco Y, et al. A single amino acid insertion in the WRKY domain of the *Arabidopsis* TIR-NBS-LRR-WRKY-type disease resistance protein SLH1 (sensitive to low humidity 1) causes activation of defense responses and hypersensitive cell death. *Plant J* (2005) **43**:873–88. doi:10.1111/j.1365-313X.2005.02500.x
110. Yang H, Shi Y, Liu J, Guo L, Zhang X, Yang S. A mutant CHS3 protein with TIR-NB-LRR-LIM domains modulates growth, cell death and freezing tolerance in a temperature-dependent manner in *Arabidopsis*. *Plant J* (2010) **63**:283–96. doi:10.1111/j.1365-313X.2010.04241.x
111. Bi D, Johnson KCM, Zhu Z, Huang Y, Chen F, Zhang Y, et al. Mutations in an atypical TIR-NB-LRR-LIM resistance protein confer autoimmunity. *Front Plant Sci* (2011) **2**:71. doi:10.3389/fpls.2011.00071
112. Periyannan S, Moore J, Ayliffe M, Bansal U, Wang X, Huang L, et al. The gene Sr33, an ortholog of Barley Mla genes, encodes resistance to wheat stem rust race Ug99. *Science* (2013) **341**:786–8. doi:10.1126/science.1239028
113. Collier SM, Moffett P. NB-LRRs work a “bait and switch” on pathogens. *Trends Plant Sci* (2009) **14**:521–9. doi:10.1016/j.tplants.2009.08.001
114. Swiderski MR, Birker D, Jones JG. The TIR domain of TIR-NB-LRR resistance proteins is a signaling domain involved in cell death induction. *Mol Plant Microbe Interact* (2009) **22**:157–65. doi:10.1094/MPMI-22-2-0157
115. Mucyn TS, Clemente A, Andriotis VME, Balmuth AL, Oldroyd GED, Staskawicz BJ, et al. The tomato NB-ARC-LRR protein Prf interacts with Pto kinase in vivo to regulate specific plant immunity. *Plant Cell* (2006) **18**:2792–806. doi:10.1105/tpc.106.044016
116. Lukasik-Shreepathy E, Slootweg E, Richter H, Goverse A, Cornelissen BJC, Takken FLW. Dual regulatory roles of the extended N terminus for activation of the tomato Mi-1.2 resistance protein. *Mol Plant Microbe Interact* (2012) **25**:1045–57. doi:10.1094/MPMI-11-11-0302
117. Akita M, Valkonen JPT. A novel gene family in moss (*Physcomitrella patens*) shows sequence homology and a phylogenetic relationship with the TIR-NBS class of plant disease resistance genes. *J Mol Evol* (2002) **55**:595–605. doi:10.1007/s00239-002-2355-8
118. Berriri S, Garcia AV, Dit Frey NF, Rozhon W, Pateyron S, Leonhardt N, et al. Constitutively active mitogen-activated protein kinase versions reveal functions of *Arabidopsis* MPK4 in pathogen defense signaling. *Plant Cell* (2012) **24**:4281–93. doi:10.1105/tpc.112.101253
119. Ravensdale M, Nemri A, Thrall PH, Ellis JG, Dodds PN. Co-evolutionary interactions between host resistance and pathogen effector genes in flax rust disease. *Mol Plant Pathol* (2011) **12**:93–102. doi:10.1111/j.1364-3703.2010.00657.x
120. Tai TH, Dahlbeck D, Clark ET, Gajiwala P, Pasion R, Whalen MC, et al. Expression of the Bs2 pepper gene confers resistance to bacterial spot disease in tomato. *Proc Natl Acad Sci U S A* (1999) **96**:14153–8. doi:10.1073/pnas.96.24.14153
121. Wulff BBH, Horvath DM, Ward ER. Improving immunity in crops: new tactics in an old game. *Curr Opin Plant Biol* (2011) **14**:468–76. doi:10.1016/j.pbi.2011.04.002
122. Coll NS, Epple P, Dangl JL. Programmed cell death in the plant immune system. *Cell Death Differ* (2011) **18**:1247–56. doi:10.1038/cdd.2011.37
123. Maekawa T, Kracher B, Vernaldi S, Ver Loren van Themaat E, Schulze-Lefert P. Conservation of NLR-triggered immunity across plant lineages. *Proc Natl Acad Sci U S A* (2012) **109**:20119–23. doi:10.1073/pnas.1218059109
124. Narusaka M, Kubo Y, Hatakeyama K, Imamura J, Ezura H, Nanasato

- Y, et al. Interfamily transfer of dual NB-LRR genes confers resistance to multiple pathogens. *PLoS One* (2013) **8**:e55954. doi:10.1371/journal.pone.0055954
125. Xiao S, Charoenwattana P, Holcombe L, Turner JG. The *Arabidopsis* genes RPW8.1 and RPW8.2 confer induced resistance to powdery mildew diseases in tobacco. *Mol Plant Microbe Interact* (2003) **16**:289–94. doi:10.1094/MPMI.2003.16.4.289
126. Mukhtar MS, Carvunis A-R, Dreze M, Epple P, Steinbrenner J, Moore J, et al. Independently evolved virulence effectors converge onto hubs in a plant immune system network. *Science* (2011) **333**:596–601. doi:10.1126/science.1203659
127. Narusaka M, Shirasu K, Noutoshi Y, Kubo Y, Shiraishi T, Iwabuchi M, et al. RRS1 and RPS4 provide a dual resistance-gene system against fungal and bacterial pathogens. *Plant J* (2009) **60**:218–26. doi:10.1111/j.1365-313X.2009.03949.x
128. Bhattacharjee S, Halane MK, Kim SH, Gassmann W. Pathogen effectors target *Arabidopsis* EDS1 and alter its interactions with immune regulators. *Science* (2011) **334**:1405–8. doi:10.1126/science.1211592
129. Heidrich K, Wirthmueller L, Tasset C, Pouzet C, Deslandes L, Parker JE. *Arabidopsis* EDS1 connects pathogen effector recognition to cell compartment-specific immune responses. *Science* (2011) **334**:1401–4. doi:10.1126/science.1211641
130. Shen Q-H, Zhou F, Bieri S, Haizel T, Shirasu K, Schulze-Lefert P. Recognition specificity and RARI/SGT1 dependence in barley Mla disease resistance genes to the powdery mildew fungus. *Plant Cell* (2003) **15**:732–44. doi:10.1105/tpc.009258
131. Hinsch M, Staskawicz B. Identification of a new *Arabidopsis* disease resistance locus, RPs4, and cloning of the corresponding avirulence gene, avrRps4, from *Pseudomonas syringae* pv. pisi. *Mol Plant Microbe Interact* (1996) **9**:55–61. doi:10.1094/MPMI-9-0055
132. Deslandes L, Olivier J, Peeters N, Feng DX, Khounlotham M, Boucher C, et al. Physical interaction between RRS1-R, a protein conferring resistance to bacterial wilt, and PopP2, a type III effector targeted to the plant nucleus. *Proc Natl Acad Sci U S A* (2003) **100**:8024–9. doi:10.1073/pnas.1230660100
133. Schulze-Lefert P, Panstruga R. Establishment of biotrophy by parasitic fungi and reprogramming of host cells for disease resistance. *Annu Rev Phytopathol* (2003) **41**:641–67. doi:10.1146/annurev.phyto.41.061002.083300
134. Laluk K, Mengiste T. Necrotroph attacks on plants: wanton destruction or covert extortion? *Arabidopsis Book* (2010) **8**:e0136. doi:10.1199/tab.0136
135. Lorang JM, Sweat TA, Wolpert TJ. Plant disease susceptibility conferred by a “resistance” gene. *Proc Natl Acad Sci USA* (2007) **104**:14861–6. doi:10.1073/pnas.0702572104
136. Nagy ED, Bennetzen JL. Pathogen corruption and site-directed recombination at a plant disease resistance gene cluster. *Genome Res* (2008) **18**:1918–23. doi:10.1101/gr.078766.108
137. Lorang J, Cuesta-Marcos A, Hayes PM, Wolpert TJ. Identification and mapping of adult-onset sensitivity to victorin in barley. *Mol Breed* (2010) **26**:545–50. doi:10.1007/s11032-010-9458-5
138. Lorang J, Kidarsa T, Bradford CS, Gilbert B, Curtis M, Tzeng S-C, et al. Tricking the guard: exploiting plant defense for disease susceptibility. *Science* (2012) **338**:659–62. doi:10.1126/science.1226743
139. Mengiste T. Plant immunity to necrotrophs. *Annu Rev Phytopathol* (2012) **50**:267–94. doi:10.1146/annurev-phyto-081211-172955
140. Meinzer U, Barreau F, Esmiol-Welterlin S, Jung C, Villard C, Léger T, et al. *Yersinia pseudotuberculosis* effector YopJ subverts the Nod2/RICK/TAK1 pathway and activates caspase-1 to induce intestinal barrier dysfunction. *Cell Host Microbe* (2012) **11**:337–51. doi:10.1016/j.chom.2012.02.009
141. Kim Y-G, Shaw MH, Warner N, Park J-H, Chen F, Ogura Y, et al. Cutting edge: Crohn’s disease-associated Nod2 mutation limits production of proinflammatory cytokines to protect the host from *Enterococcus faecalis*-induced lethality. *J Immunol* (2011) **187**:2849–52. doi:10.4049/jimmunol.1001854
142. Stecher B, Robbiani R, Walker AW, Westendorf AM, Barthel M, Kremer M, et al. *Salmonella enterica* serovar typhimurium exploits inflammation to compete with the intestinal microbiota. *PLoS Biol* (2007) **5**:2177–89. doi:10.1371/journal.pbio.0050244
143. Maleck K, Levine A, Eulgem T, Morgan A, Schmid J, Lawton KA, et al. The transcriptome of *Arabidopsis thaliana* during systemic acquired resistance. *Nat Genet* (2000) **26**:403–10. doi:10.1038/82521
144. Tao Y, Xie Z, Chen W, Glazebrook J, Chang H-S, Han B, et al. Quantitative nature of *Arabidopsis* responses during compatible and incompatible interactions with the bacterial pathogen *Pseudomonas syringae*. *Plant Cell* (2003) **15**:317–30. doi:10.1105/tpc.007591
145. Caldo RA, Nettleton D, Wise RP. Interaction-dependent gene expression in Mla-specified response to barley powdery mildew. *Plant Cell* (2004) **16**:2514–28. doi:10.1105/tpc.104.023382
146. Caldo RA, Nettleton D, Peng J, Wise RP. Stage-specific suppression of basal defense discriminates barley plants containing fast- and delayed-acting Mla powdery mildew resistance alleles. *Mol Plant Microbe Interact* (2006) **19**:939–47. doi:10.1094/MPMI-19-0939
147. Moscou MJ, Lauter N, Caldo RA, Nettleton D, Wise RP. Quantitative and temporal definition of the Mla transcriptional regulon during barley-powdery mildew interactions. *Mol Plant Microbe Interact* (2011) **24**:694–705. doi:10.1094/MPMI-09-10-0211
148. Eulgem T, Weigman VJ, Chang H-S, McDowell JM, Holub EB, Glazebrook J, et al. Gene expression signatures from three genetically separable resistance gene signaling pathways for downy mildew resistance. *Plant Physiol* (2004) **135**:1129–44. doi:10.1104/pp.104.040444
149. Gao Z, Gao Z, Chung E-H, Eitas TK, Dangel JL. Plant intracellular innate immune receptor resistance to *Pseudomonas syringae* pv. maculicola 1 (RPM1) is activated at, and functions on, the plasma membrane. *Proc Natl Acad Sci USA* (2011) **108**:7619–24. doi:10.1073/pnas.1104410108
150. Gao X, Chen X, Lin W, Chen S, Lu D, Niu Y, et al. Bifurcation of *Arabidopsis* NLR immune signaling via Ca²⁺-dependent protein kinases. *PLoS Pathog* (2013) **9**:e1003127. doi:10.1371/journal.ppat.1003127
151. Moeder W, Urquhart W, Ung H, Yoshioka K. The role of cyclic nucleotide-gated ion channels in plant immunity. *Mol Plant* (2011) **4**:442–52. doi:10.1093/mp/sss018
152. Ma W, Smigel A, Verma R, Berkowitz GA. Cyclic nucleotide-gated channels and related signaling components in plant innate immunity. *Plant Signal Behav* (2009) **4**:277–82. doi:10.4161/psb.4.4.8103
153. Burch-Smith TM, Schiff M, Caplan JL, Tsao J, Czymbek K, Dinesh-Kumar SP. A novel role for the TIR domain in association with pathogen-derived elicitors. *PLoS Biol* (2007) **5**:e68. doi:10.1371/journal.pbio.0050068
154. Wirthmueller L, Zhang Y, Jones JG, Parker JE. Nuclear accumulation of the *Arabidopsis* immune receptor RPS4 is necessary for triggering EDS1-dependent defense. *Curr Biol* (2007) **17**:2023–9. doi:10.1016/j.cub.2007.10.042
155. Chang C, Yu D, Jiao J, Jing S, Schulze-Lefert P, Shen Q-H. Barley MLA immune receptors directly interfere with antagonistically acting transcription factors to initiate disease resistance signaling. *Plant Cell* (2013) **25**:1158–73. doi:10.1105/tpc.113.109942
156. Padmanabhan MS, Ma S, Burch-Smith TM, Czymbek K, Huijser P, Dinesh-Kumar SP. Novel positive regulatory role for the SPL6 transcription factor in the N TIR-NB-LRR receptor-mediated plant innate immunity. *PLoS Pathog* (2013) **9**:e1003235. doi:10.1371/journal.ppat.1003235
157. Zhu Z, Xu F, Zhang Y, Cheng YT, Wiermer M, Li X, et al. *Arabidopsis* resistance protein SNC1 activates immune responses through association with a transcriptional corepressor. *Proc Natl Acad Sci USA* (2010) **107**:13960–5. doi:10.1073/pnas.1002828107
158. Fontes JD, Kanazawa S, Nekrep N, Peterlin BM. The class II transactivator CIITA is a transcriptional integrator. *Microbes Infect* (1999) **1**:863–9. doi:10.1016/S1286-4579(99)00232-4
159. Kobayashi KS, van den Elsen PJ. NLR5: a key regulator of MHC class I-dependent immune responses. *Nat Rev Immunol* (2012) **12**:813–20. doi:10.1038/nri3339

160. Thanos D, Maniatis T. Virus induction of human IFN beta gene expression requires the assembly of an enhanceosome. *Cell* (1995) **83**:1091–100. doi:10.1016/0092-8674(95)90136-1
161. Masternak K, Muhlethaler-Mottet A, Villard J, Zufferey M, Steimle V, Reith W. CIITA is a transcriptional coactivator that is recruited to MHC class II promoters by multiple synergistic interactions with an enhanceosome complex. *Genes Dev* (2000) **14**:1156–66. doi:10.1101/gad.14.9.1156
162. Hu Z, Yan C, Liu P, Huang Z, Ma R, Zhang C, et al. Crystal structure of NLRC4 reveals its autoinhibition mechanism. *Science* (2013) **341**:172. doi:10.1126/science.1236381
163. Bendahmane A, Farnham G, Moffett P, Baulcombe DC. Constitutive gain-of-function mutants in a nucleotide binding site–leucine rich repeat protein encoded at the Rx locus of potato. *Plant J* (2002) **32**:195–204. doi:10.1046/j.1365-313X.2002.01413.x
164. Hwang C-F, Williamson VM. Leucine-rich repeat-mediated intramolecular interactions in nematode recognition and cell death signaling by the tomato resistance protein Mi. *Plant J* (2003) **34**:585–93. doi:10.1046/j.1365-313X.2003.01749.x
165. Qi D, DeYoung BJ, Innes RW. Structure-function analysis of the coiled-coil and leucine-rich repeat domains of the RPS5 disease resistance protein. *Plant Physiol* (2012) **158**:1819–32. doi:10.1104/pp.112.194035
166. Slootweg EJ, Spiridon LN, Roosien J, Butterbach P, Pommeroy R, Westerhof L, et al. Structural determinants at the interface of the ARC2 and leucine-rich repeat domains control the activation of the plant immune receptors Rx1 and Gpa2. *Plant Physiol* (2013) **162**:1510–28. doi:10.1104/pp.113.218842
167. Bai S, Liu J, Chang C, Zhang L, Maekawa T, Wang Q, et al. Structure-function analysis of barley NLR immune receptor MLA10 reveals its cell compartment specific activity in cell death and disease resistance. *PLoS Pathog* (2012) **8**:e1002752. doi:10.1371/journal.ppat.1002752

Conflict of Interest Statement: The authors declare that the research was conducted in the absence of any commercial or financial relationships that could be construed as a potential conflict of interest.

Received: 05 July 2013; accepted: 09 September 2013; published online: 25 September 2013.

Citation: Jacob F, Vernaldi S and Maekawa T (2013) Evolution and conservation of plant NLR functions. *Front. Immunol.* **4**:297. doi: 10.3389/fimmu.2013.00297

This article was submitted to *Molecular Innate Immunity*, a section of the journal *Frontiers in Immunology*.

Copyright © 2013 Jacob, Vernaldi and Maekawa. This is an open-access article distributed under the terms of the Creative Commons Attribution License (CC BY). The use, distribution or reproduction in other forums is permitted, provided the original author(s) or licensor are credited and that the original publication in this journal is cited, in accordance with accepted academic practice. No use, distribution or reproduction is permitted which does not comply with these terms.