

Gene Regulation:
Rpb4 Subunit Functions Mainly in mRNA
Synthesis by RNA Polymerase II

Daniel Schulz, Nicole Pirkl, Elisabeth
Lehmann and Patrick Cramer

J. Biol. Chem. 2014, 289:17446-17452.

doi: 10.1074/jbc.M114.568014 originally published online May 5, 2014



Access the most updated version of this article at doi: [10.1074/jbc.M114.568014](https://doi.org/10.1074/jbc.M114.568014)

Find articles, minireviews, Reflections and Classics on similar topics on the [JBC Affinity Sites](#).

Alerts:

- [When this article is cited](#)
- [When a correction for this article is posted](#)

[Click here](#) to choose from all of JBC's e-mail alerts

This article cites 34 references, 22 of which can be accessed free at
<http://www.jbc.org/content/289/25/17446.full.html#ref-list-1>

Rpb4 Subunit Functions Mainly in mRNA Synthesis by RNA Polymerase II*

Received for publication, March 25, 2014, and in revised form, May 2, 2014. Published, JBC Papers in Press, May 6, 2014, DOI 10.1074/jbc.M114.568014

Daniel Schulz[‡], Nicole Pirkl[‡], Elisabeth Lehmann^{†1}, and Patrick Cramer^{†§2}

From the [‡]Gene Center Munich and Department of Biochemistry, Center for Integrated Protein Science (CIPSM), Ludwig-Maximilians-Universität München, Feodor-Lynen-Strasse 25, 81377 Munich and the [§]Department of Molecular Biology, Max-Planck-Institute for Biophysical Chemistry, Am Fassberg 11, 37077 Göttingen, Germany

Background: The RNA polymerase II (Pol II) subunit Rpb4 was reported to function in mRNA degradation.

Results: Rpb4 deletion causes defects in mRNA synthesis and compensatory changes in mRNA degradation. Covalent attachment of Rpb4 to the Pol II core largely restores mRNA metabolism.

Conclusion: Rpb4 is an integral part of Pol II and functions mainly in Pol II transcription.

Significance: Rpb4 functions mainly in transcription.

RNA polymerase II (Pol II) is the central enzyme that carries out eukaryotic mRNA transcription and consists of a 10-subunit catalytic core and a subcomplex of subunits Rpb4 and Rpb7 (Rpb4/7). Rpb4/7 has been proposed to dissociate from Pol II, enter the cytoplasm, and function there in mRNA translation and degradation. Here we provide evidence that Rpb4 mainly functions in nuclear mRNA synthesis by Pol II, as well as evidence arguing against an important cytoplasmic role in mRNA degradation. We used metabolic RNA labeling and comparative Dynamic Transcriptome Analysis to show that Rpb4 deletion in *Saccharomyces cerevisiae* causes a drastic defect in mRNA synthesis that is compensated by down-regulation of mRNA degradation, resulting in mRNA level buffering. Deletion of Rpb4 can be rescued by covalent fusion of Rpb4 to the Pol II core subunit Rpb2, which largely restores mRNA synthesis and degradation defects caused by Rpb4 deletion. Thus, Rpb4 is a *bona fide* Pol II core subunit that functions mainly in mRNA synthesis.

The level of an mRNA in the cell is determined by its synthesis rate (SR)³ and its degradation rate (DR). Although in eukaryotes gene transcription and mRNA degradation have been intensively studied, the regulation and interplay between these two spatially separated processes remain poorly understood. We and others have shown recently that mRNA synthesis and degradation are coupled and that this coupling serves to buffer cellular mRNA levels (1–6). It has been shown that a single point mutation near the active site of RNA polymerase (Pol) II (7) leads to a reduction of SRs but unexpectedly also DRs

(1). Vice versa, impaired DRs also lead to decreased SRs, resulting in a buffering of mRNA levels (1, 2, 6).

All eukaryotic mRNAs are synthesized by the 12-subunit Pol II enzyme that consists of a 10-subunit catalytic core and a 2-subunit subcomplex made of subunit Rpb4 and Rpb7 (Rpb4/7). Only two Pol II subunits are dispensable for viability in the yeast *Saccharomyces cerevisiae*, Rpb4 and Rpb9. Although Rpb9 has been shown to be involved in transcription fidelity (8, 9), Rpb4 has been shown to be dispensable for optimum growth at 18–23 °C and has been proposed to protect Pol II from inactivation at high temperatures (10–13). The Rpb4/7 heterodimer can dissociate from core Pol II in *S. cerevisiae* (14). Rpb4 and Rpb7 have been reported to be in excess over core Pol II subunits within cells (10), but a recent study using quantitative proteomics could not confirm this (15). Although Rpb4 has been proposed to associate poorly with core Pol II at 27 °C during logarithmic growth (13), it could be detected on all genes at 30 °C using chromatin immunoprecipitation (16).

It has been reported that Rpb4 and Rpb7 shuttle between the nucleus and the cytoplasm and that Rpb4 and Rpb7 accumulate in the cytoplasm during heat shock (4, 17). Rpb4/7 has been reported to shuttle in a transcription-dependent manner, and it has been reported to first associate with Pol II in order for it to exert its post-transcriptional functions in the cytoplasm (4, 18–20). Furthermore, Rpb4 has been reported to function in the degradation of specific mRNAs (21), whereas an effect of Rpb7 on mRNA degradation was reported to be general (22), but shuttling of Rpb4 and Rpb7 has been reported to depend on each other (19). Additionally, Rpb4 has been proposed to function directly in translation initiation (18). These studies led to the conclusion that Rpb4/7 influence transcription in the nucleus and mRNA degradation in the cytoplasm and were crucial for deriving the model of “mRNA imprinting” (20, 23, 24).

Here we test the direct functions of Rpb4 in mRNA synthesis and degradation. Determining whether a protein is directly involved in both processes is not trivial because perturbation of one process leads to compensatory effects of the other. Indeed, such mutual compensation between SRs and DRs is a general phenomenon in cells that has been observed for multiple mutants (1, 2, 6). To test for a direct function of Rpb4 in mRNA

* This article was selected as a Paper of the Week.

¹ Present address: Institute of Molecular Biology and Biophysics, ETH Zürich, Otto-Stern-Weg 5, 8093 Zürich, Switzerland.

² To whom correspondence should be addressed: Gene Center Munich and Dept. of Biochemistry, Center for Integrated Protein Science (CIPSM), Ludwig-Maximilians-Universität München, Feodor-Lynen-Strasse 25, 81377 Munich, Germany. Tel.: 49-89-218076951; Fax: 49-89-218076998; E-mail: pcramer@mpibpc.mpg.de.

³ The abbreviations used are: SR, synthesis rate; DR, degradation rate; cDTA, comparative Dynamic Transcriptome Analysis; Pol, RNA polymerase; YPD, yeast extract peptone dextrose; Bis-Tris, 2-(bis(2-hydroxyethyl)amino)-2-(hydroxymethyl)propane-1,3-diol.

degradation, a mutant has to be used in which the putative functions in transcription and degradation are uncoupled. We created such a mutant by covalently linking Rpb4 to the Pol II core subunit Rpb2. We show that this Rpb2-Rpb4 fusion mutant rescues all growth and transcription defects of the Rpb4 deletion strain $\Delta rpb4$ at 30 and at 37 °C. Furthermore, we could not detect strong differences in mRNA degradation between the Rpb2-Rpb4 mutant and wild-type yeast. These results demonstrate that Rpb4 is a *bona fide* Pol II subunit with functions in transcription and do argue against the proposed direct function of Rpb4 in mRNA degradation.

EXPERIMENTAL PROCEDURES

Yeast and Plasmids— $\Delta rpb4a$ strain was obtained from the knock-out library from Euroscarf and was compared against an isogenic wild type (BY4741). The freshly prepared $\Delta rpb4$ was created in a different background for comparability with the Rpb2-Rpb4 fusion strain. To this end a strain carrying a genomic deletion of Rpb2 was created in our laboratory. Plasmids pRS316-*RPB2*, pRS315-*RPB2*, and pRS315-*RPB2-RPB4* were generated by cloning the respective ORF plus sequences 500 bp upstream and 250 bp downstream into pRS315 (ATCC) and pRS316 (ATCC) using XhoI/SacI restriction sites. For pRS315-*RPB2-RPB4* overlap, PCRs were used to introduce *RPB4* in-frame between *RPB2* and the *RPB2* 3'-UTR (25). We added three glycines as a linker and removed the start methionine in the Rpb4 sequence. The heterozygous *RPB2/rpb2* Δ *S. cerevisiae* yeast strain (BY4743, *rpb2::KanMX6/RPB2*) was generated and transformed with pRS316-*RPB2*. Diploids were sporulated and tetrads were dissected on YPD plates. The shuffle strain carrying pRS316-*RPB2* was transformed with either pRS315-*RPB2* or pRS315-*RPB2-RPB4* and streaked on 5-fluoroorotic acid plates and then on synthetic complete-Leu plates. The resulting strain carrying pRS315-*RPB2* was used as corresponding wild type for the fusion strain carrying pRS315-*RPB2-RPB4*. Genotypes of the strains are MATa; *his3* Δ 1; *leu2* Δ 0; *met15* Δ 0; *LYS2*; *ura3* Δ 0 *rpb2::KanMX6* pRS315-Rpb2 (wild type); MATa; *his3* Δ 1; *leu2* Δ 0; *met15* Δ 0; *LYS2*; *ura3* Δ 0 *rpb2::KanMX6 rpb4::clonNAT* pRS315-Rpb2-Rpb4 (Rpb2-Rpb4 fusion); and MATa; *his3* Δ 1; *leu2* Δ 0; *met15* Δ 0; *LYS2*; *ura3* Δ 0 *rpb2::KanMX6 rpb4::clonNAT* pRS315-Rpb2 ($\Delta rpb4$ knock-out). Genomic deletion of Rpb4 in the fusion strain as well as in the corresponding wild type was carried out via homologous recombination using a clonNAT cassette amplified from a pYM-natNT2-3HA vector (26). Directly after generation and strain validation via PCR, yeast strains were stored in 30% glycerol stocks at -80 °C. Experiments were performed from fresh plates from -80 °C stocks, and yeast strains were generally either grown in rich medium (YPD) at optimal growth temperature (30 °C) or under heat shock (37 °C).

Western Blotting—Overnight cultures of yeast cells were diluted to an A_{600} of 0.1 and grown until $\sim A_{600}$ of 0.8. A total of 5 optical densities were sedimented and resuspended in 100 μ l of lysis buffer (10 mM MOPS, pH 6.8, 10% SDS, 48% urea, 10 mM EDTA), and 100 μ l of glass beads were added. Samples were vortexed for 3 min, and 100 μ l of 2 \times loading buffer (75 mM MOPS, pH 6.8, 4% SDS, 48% urea, 3% DTT, 0.2% bromphenol blue) were added and heated to 55 °C for 10 min. Samples were

separated on precast gels (NuPAGE 4–12% Bis-Tris, Invitrogen) and analyzed by immunoblotting with antibodies against Rpb4 (sc-101604, Santa Cruz Biotechnologies), Rpb1 (8WG16, Abcam), Rpb3 (1Y26, NeoClone), and tubulin (sc-69971, Santa Cruz Biotechnologies).

Immunostaining—Overnight cultures of yeast cells were diluted to $A_{600} \sim 0.1$ and grown until A_{600} of 0.5–1. Cells were sedimented and resuspended in 4% paraformaldehyde in PBS and cross-linked for 10 min. Cross-linking was quenched with 125 mM glycine for 10 min, and cells were sedimented and resuspended in KIP/sorbitol buffer (0.1 M KH_2PO_4 , 1 M sorbitol). Cell walls of cross-linked cells were digested with Zymolyase for 30–45 min at 37 °C. Spheroplasts were washed with PBS twice and resuspended in PBS. Different amounts of cells were spotted on poly-L-lysine (Sigma, P8920)-coated cover glasses. Cells were permeabilized with ice-cold methanol for 6 min, washed with PBS three times, washed one time with PBS + 0.1% Triton X-100, and incubated for 20 min with blocking solution (PBS, 0.1% Tween, 2% bovine serum albumin). 100 μ l of a 1:1000 dilution of Rpb4 antibody (sc-101604, Santa-Cruz Biotechnologies) in PBS were used to stain cells for 1 h. Cells were washed six times with PBS before staining with Alexa Fluor[®] 488 goat anti-mouse antibody (Invitrogen, A31619) for 1 h. Cells were washed five times with PBS and stained with 1 μ g/ml DAPI for 5 min. Cells were washed five times with PBS before imaging. Images were taken on a Leica DM2500 microscope with Leica LAS AF software.

Comparative Dynamic Transcriptome Analysis (cDTA)—cDTA was carried out as described (1). Briefly, *S. cerevisiae* cells were grown to an A_{600} of 0.8 and labeled with 4-thiouracil for 6 min. *Schizosaccharomyces pombe* cultures for normalization were grown to A_{600} of 0.8 in YES (5 g/liter yeast extract; 30 g/liter glucose; supplements: 225 mg/liter adenine, histidine, leucine, uracil, and lysine hydrochloride) medium and labeled with 4-thiouridine. Heat-shock samples were grown at 30 °C overnight, and an amount equivalent to an A_{600} of 0.1 was transferred to 37 °C and grown until it reached an A_{600} of 0.8. Equal numbers of *S. pombe* cells from one batch were added to equal cell numbers of *S. cerevisiae* samples for global intensity normalization (1). Cell lysis was performed on the *S. pombe*/*S. cerevisiae* cell mixture for 8 \times 40 s with 1 min on ice in between on a MP-Biosciences FastPrep-24 machine. Total RNA was extracted with the RiboPure yeast kit (Ambion/Applied Biotechnologies), following the manufacturer's protocol. Labeled RNA was extracted from 100 μ g of total RNA via biotinylation, and total and labeled RNA were analyzed with Affymetrix gene expression arrays as described (1).

Data Analysis—Analysis of data from cDTA was carried out as described (1) using R/Bioconductor and the DTA package (27). Because we used a mixture of *S. cerevisiae* and *S. pombe* cells, we used a custom probe annotation environment (cdf) to exclude cross-hybridization probes from our analyses. Labeling bias correction was done as described in Miller *et al.* (28), and proportional rescaling of microarray intensities to the internal *S. pombe* standard was done as described in Sun *et al.* (1). mRNA synthesis rates and decay rates were obtained as described in Miller *et al.* (28). Microarray data were deposited in ArrayExpress under accession number E-MTAB-2539.

Rpb4 Functions Mainly in mRNA Synthesis

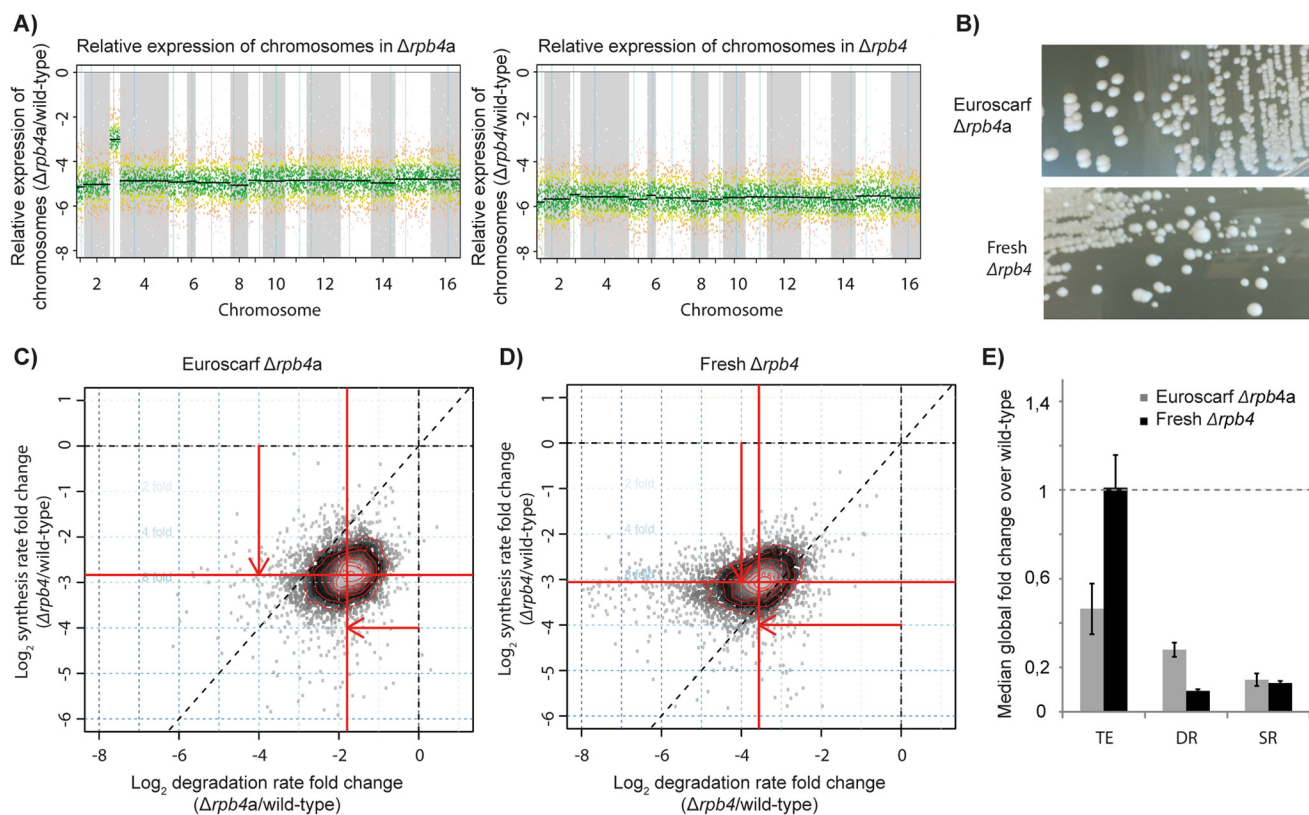


FIGURE 1. Rpb4 deletion causes severe defects in mRNA metabolism. A, labeled RNA expression -fold changes in $\Delta rpb4a$ and the $\Delta rpb4$ of genes plotted against their position in chromosomes. Black lines represent the median expression of all genes of the respective chromosome. B, colony growth on YPD plates for the freshly prepared $\Delta rpb4$ and the Euroscarf $\Delta rpb4a$ strain. Cells were plated from cryo-cultures and incubated for 4 days at 30 °C. C, -fold changes in DRs (log folds, x axis) and SRs (log folds, y axis) for the Euroscarf $\Delta rpb4a$ mutant against the isogenic wild type. Each point corresponds to one mRNA, and the density of points is encoded by their brightness. Red contour lines define regions of equal density. The center of the distribution is shifted from the origin, indicating a global shift in median SRs and DRs (SR shift is reflected by red line relative to dashed x axis line; DR shift is reflected by red line relative to dashed y axis line). D, DR and SR -fold changes for the freshly prepared $\Delta rpb4$ mutant as in C. E, median -fold changes of total RNA levels (TE), mRNA DRs, and mRNA SRs for the $\Delta rpb4$ (black bars) and the $\Delta rpb4a$ (gray bars) mutants over wild type determined from cDTA. The dashed gray line reflects the respective wild-type value, which is normalized to one. Error bars indicate S.D.

RESULTS

Rpb4 Deletion Causes a Severe Growth Defect—To investigate the general function of Rpb4 in mRNA metabolism under optimum growth conditions at 30 °C, we used a knock-out strain from Euroscarf ($\Delta rpb4a$) and performed microarray gene expression analysis. The obtained data revealed that the strain was aneuploid and carried two copies of chromosome 3 (Fig. 1A). Therefore we prepared a fresh knock-out strain of Rpb4 ($\Delta rpb4$). We found that the fresh $\Delta rpb4$ strain was not aneuploid and was even more growth-defective than the aneuploid $\Delta rpb4a$ library strain. At optimum growth temperatures, the $\Delta rpb4$ strain had a doubling time of 5.3 h (1.6 h for wild type) and the $\Delta rpb4a$ strain had a doubling time of 3 h (1.5 h for wild type). Our freshly prepared $\Delta rpb4$ strain also showed strong variations in colony growth on YPD agar plates, indicating selection of secondary mutations, which was not observed for the Euroscarf $\Delta rpb4a$ strain (Fig. 1B). These results supported the importance of Rpb4 for cellular mRNA metabolism.

Rpb4 Deletion Leads to Defects in mRNA Synthesis and Degradation—To investigate to which extent Rpb4 is required for RNA synthesis, we used cDTA (1). cDTA is based on non-perturbing metabolic labeling of newly synthesized RNAs and makes use of fission yeast cells (*S. pombe*) as an internal standard. cDTA can measure SRs, determine DRs, and detect global

-fold changes in rates and mRNA levels (1, 2). This is particularly important when working with factors that can potentially affect the expression of all genes (29). Application of cDTA to our freshly prepared $\Delta rpb4$ strain revealed a strong global defect in both SRs and DRs under optimal growth conditions at 30 °C (Fig. 1C). Although we observed a median 8-fold decrease in SRs as compared with the wild type, the level of total RNA in the $\Delta rpb4$ strain was essentially unchanged, due to an 11-fold decrease in DRs (Fig. 1E). mRNA synthesis rates were decreased at least 2-fold for 99.6% of genes, consistent with a global function of Rpb4 in Pol II transcription.

When we repeated cDTA with the commercially available knock-out strain of Rpb4 ($\Delta rpb4a$), a similarly strong global defect in SRs was observed (7-fold). However, the defect in mRNA degradation was less severe, with a median 3.6-fold decrease in DRs (Fig. 1D), which resulted in 54% lower total RNA levels in the $\Delta rpb4a$ strain (Fig. 1E). SRs of 99.4% of genes were decreased more than 2-fold in the $\Delta rpb4a$ strain. The differences in total mRNA levels were comparable with a previous study, where a global decrease of 46% of mRNAs had been observed at 24 °C upon deletion of Rpb4 (12). SRs in the $\Delta rpb4$ and the $\Delta rpb4a$ mutants were at 12–14% of wild-type values, indicating that the increase in growth rates of the $\Delta rpb4a$ strain was due to secondary mutations.

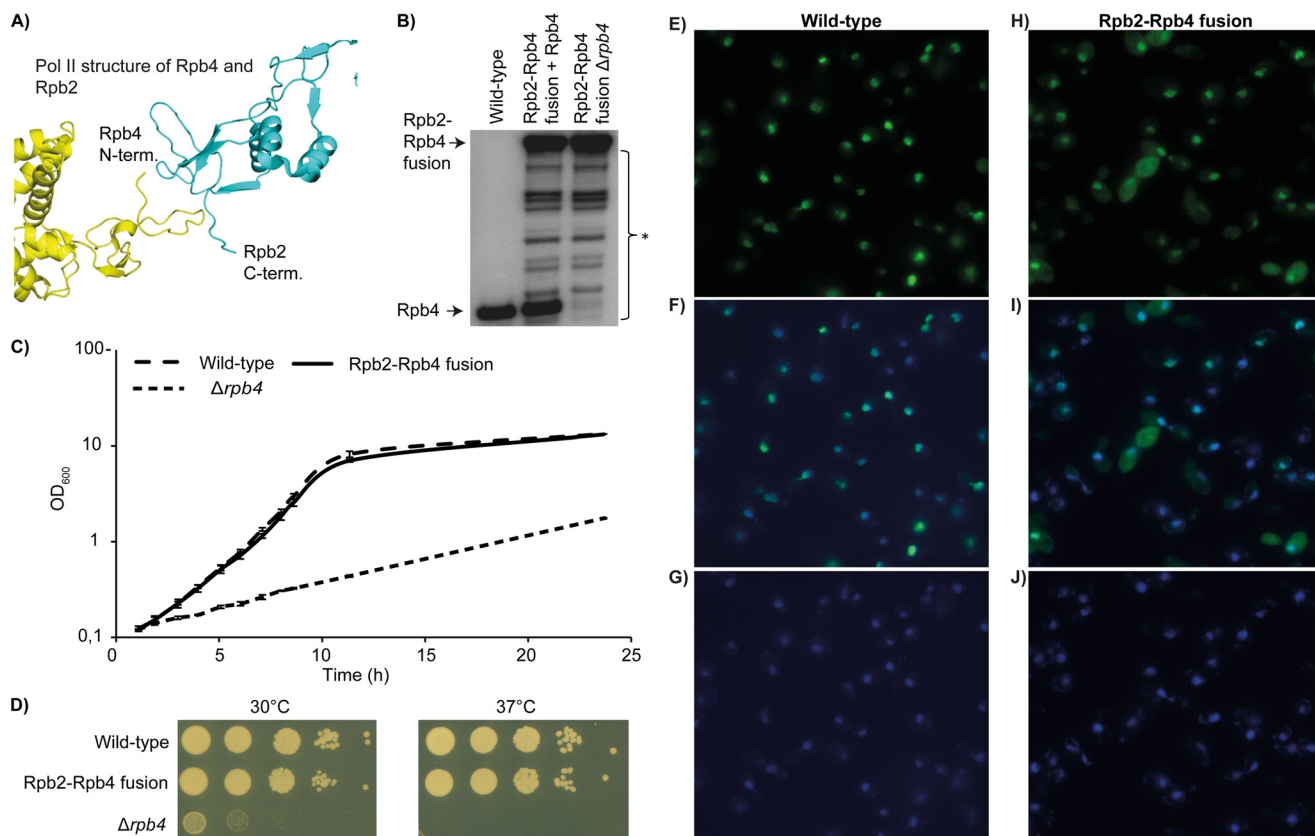


FIGURE 2. Covalent fusion of Rpb2 and Rpb4 compensates growth defects of Rpb4 deletion. *A*, the C terminus of Rpb2 (cyan) lies in close proximity to the N terminus of Rpb4 (yellow) and suggested the possibility of direct fusion of the two proteins with a linker containing three glycine residues. *B*, Western blot against Rpb4 for the wild type, the Rpb2-Rpb4 fusion mutant with free Rpb4, and the fusion mutant after genomic deletion of Rpb4. An asterisk marks low amounts of various N-terminal degradation products of the fusion protein that do not lead to significant amounts of free Rpb4. *C*, growth curves of wild-type, fusion mutant, and $\Delta rpb4$ strains in culture at 30 °C. Doubling times were determined from the slope during logarithmic growth. *OD*, optical density. *D*, cultures of wild-type, Rpb2-4 fusion, and $\Delta rpb4$ cells were grown to the logarithmic phase at 30 °C. For each strain, 1 A_{600} was spotted on plates in 10-fold serial dilutions on YPD plates. Plates were incubated either at 30 or 37 °C for 2–3 days. *E*, immunostaining of Rpb4 (green signal) in wild-type cells. *F*, colocalization of the nucleus stained with DAPI (blue signal) and Rpb4 (green signal) in wild-type cells. *G*, nuclei stained with DAPI in wild-type cells. *H–J*, immunostaining as in *E–G*, for the Rpb2-Rpb4 fusion mutant reveals a major nuclear localization.

The simplest explanation for our results is that Rpb4 is a *bona fide* Pol II subunit. The previously defined general cellular mechanism for buffering of mRNA levels (1, 2, 28) is able to compensate for the transcription defect by a lowering of DRs, *i.e.* stabilizing the transcripts. This explanation is in line with our previous data and with published work (1, 2, 10–12), and does not require the assumption that Rpb4 has a major, active role in mRNA degradation.

Rpb2-Rpb4 Fusion Rescues $\Delta rpb4$ Growth Phenotypes—The above results could alternatively be interpreted as evidence for the previously proposed active function of Rpb4 in mRNA degradation in the cytoplasm (4, 18, 21, 22, 30) because cause and consequence in mRNA synthesis-degradation compensation are not readily distinguished. To address whether the effect of Rpb4 deletion on mRNA degradation is direct, via an active role of Rpb4 in the cytoplasm, or indirect, via a general mRNA buffering mechanism, we covalently attached Rpb4 to the Pol II core enzyme by fusing it to the core subunit Rpb2. We prepared a Rpb2-Rpb4 fusion construct because the C terminus of Rpb2 is in close proximity to the N terminus of Rpb4 (Fig. 2A) in the crystal structure of Pol II (31).

We generated three yeast strains: one carrying a genomic deletion of *RPB2* with *RPB2* expressed from a plasmid under

the native promoter (wild type), one carrying a genomic deletion of *RPB2* with *RPB2* expressed from a plasmid under the native promoter and with a genomic deletion of *RPB4* ($\Delta rpb4$), and one carrying a genomic deletion of *RPB2* and *RPB4* and a plasmid expressing the *Rpb2-Rpb4* fusion construct under the native *RPB2* promoter (Rpb2-Rpb4 fusion strain). Thus, in the fusion strain, the Rpb2-Rpb4 fusion protein is the only source of Rpb2 and Rpb4. Expression of the fusion protein was verified (Fig. 2B).

We tested whether the Rpb2-Rpb4 fusion protein rescued the growth defects of the $\Delta rpb4$ strain. Growth of the $\Delta rpb4$ strain at 30 °C was very slow, but the fusion protein completely rescued the growth defect (Fig. 2, C and D). The doubling time (1.7 h) was essentially the same as for the isogenic wild type (1.6 h) but very different from the $\Delta rpb4$ strain (5.6 h) (Fig. 2C). Additionally, the Rpb2-4 fusion protein completely rescued growth at 37 °C, whereas the $\Delta rpb4$ strain was inviable at 37 °C (Fig. 2D). We also investigated the localization of Rpb4 and the Rpb2-Rpb4 fusion protein. Both proteins were localized mainly in the nucleus (Fig. 2, E–J). However, cytoplasmic signals of the Rpb2-Rpb4 fusion protein appeared to be slightly stronger than those of Rpb4 in the wild-type strain. Taken together, our data indicate that Rpb4 mainly functions in mRNA synthesis.

Rpb4 Functions Mainly in mRNA Synthesis

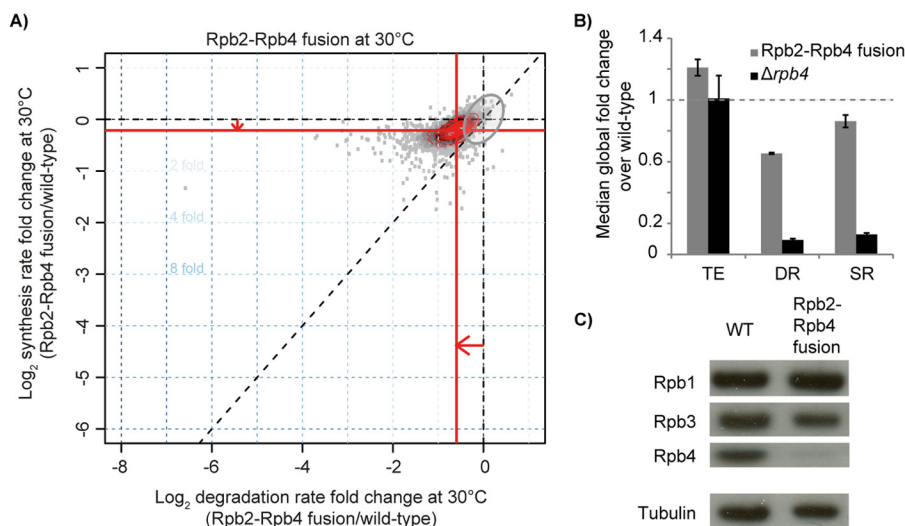


FIGURE 3. Rpb2-Rpb4 fusion rescues SR and DR defects of Rpb4 deletion. *A*, -fold changes in DRs and SRs for the Rpb2-Rpb4 fusion mutant as in Fig. 1C. The gray ellipse reflects the 95% confidence region of the median SR and DR of the wild type (1). *B*, median -fold changes of total RNA expression (TE), mRNA DRs, and mRNA SRs for the Rpb2-Rpb4 fusion mutant (gray bars). For comparison the values for $\Delta rpb4$ were plotted again (black bars). The dashed gray line reflects the respective wild-type value, which is normalized to one. Error bars indicate S.D. *C*, Western blot of Rpb1, Rpb3, Rpb4, and tubulin (loading control) in wild-type and Rpb2-Rpb4 fusion mutant cells.

Rpb2-Rpb4 Fusion Rescues Transcription and mRNA Degradation Defects of $\Delta rpb4$ —Further analysis showed that the Rpb2-Rpb4 fusion protein could mostly rescue the transcription defects caused by Rpb4 deletion. With the use of cDTA, we observed that median SRs were restored to 86% of wild-type levels (Fig. 3, *A* and *B*). Only 0.8% of genes showed SRs that were changed more than 2-fold in the fusion mutant, and these were not enriched in specific Gene Ontology (GO) terms (adjusted *p* value 0.05). We also tested whether the protein levels of other Pol II subunits were changed in the fusion strain and found similar levels of Rpb1 and Rpb3 in all strains (Fig. 3C). Thus, the Rpb2-Rpb4 fusion protein functioned almost as well as the two separate proteins Rpb2 and Rpb4 in mRNA synthesis *in vivo*. The mutant also showed only slightly compromised mRNA degradation, and the median DR was restored to 66% of wild-type levels (Fig. 3, *A* and *B*). DRs of only 13.7% of transcripts were changed more than 2-fold, but again these genes were not enriched in certain GO terms. These data indicate that Rpb4 fusion to the core Pol II enzyme largely restores mRNA synthesis and thereby also mRNA degradation, although a minor defect remained.

Rpb2-Rpb4 Fusion Enables Normal Heat-shock Response—The above data showed that the strong effects of Rpb4 deletion on mRNA degradation stem to the largest extent from mRNA synthesis-degradation compensation and not from a direct role of Rpb4 in degradation. Otherwise a much stronger effect on mRNA degradation should have been observed in the Rpb2-Rpb4 fusion strain, which does not express any free Rpb4. However, Rpb4 has been reported to shuttle between the nucleus and the cytoplasm and to accumulate in the cytoplasm upon heat shock caused by incubation at 37 °C (17, 19). If free cytosolic Rpb4 would be important for regulating mRNA degradation during heat shock, the Rpb2-Rpb4 fusion strain should grow poorly or not at all after heat shock because the $\Delta rpb4$ mutant is inviable at 37 °C (Fig. 2D). However, we observed the contrary. We found that the Rpb2-Rpb4 fusion mutant grows essentially like wild type at 37 °C, with a similar doubling time

(2.1 h, as compared with 1.9 h for wild type) (Fig. 4A). This indicated that free cytosolic Rpb4 is not required for growth under heat-shock conditions.

We next analyzed changes in mRNA metabolism upon heat shock. We carried out cDTA after incubation for 6 h at 37 °C for wild type and the Rpb2-Rpb4 fusion mutant. We could not observe differences in median total RNA levels, SRs, or DRs between the heat-shock response in the two strains (Fig. 4B), indicating that the mutant is fully capable of adapting to 37 °C. When we compared the heat-shock profile of the Rpb2-Rpb4 mutant with the heat-shock profile of the wild type, we found essentially what we had observed at 30 °C (Fig. 4C). As observed before for wild-type cells (1), mRNA metabolism was slightly elevated at 37 °C as compared with 30 °C. Despite generally higher rates at 37 °C, the fusion mutant still showed slightly decreased median SRs (76%) and DRs (68%) as compared with the wild type at 37 °C. Also, selected transcripts showed even more decreased DRs at 30 °C, but this was not observed at 37 °C (Fig. 4D). These results show that the fusion mutant can adopt its mRNA metabolism after heat shock at 37 °C and that this does not depend on free Rpb4, further arguing against a direct role of Rpb4 in mRNA degradation.

DISCUSSION

Here we addressed the question of whether the Pol II subunit Rpb4 functions only in nuclear mRNA synthesis during transcription or whether it additionally functions in cytoplasmic mRNA degradation. With the use of cDTA, we showed that Rpb4 is generally required for mRNA synthesis at all genes in *S. cerevisiae* at a growth temperature of 30 °C. We observed a severe reduction in median SRs that was 8-fold lower in the $\Delta rpb4$ mutant than in wild-type cells. Thus, at 30 °C $\Delta rpb4$ mutants can still transcribe DNA but at low rates. However, the transcription capacity of the $\Delta rpb4$ mutant is strongly impaired, and this could explain why perturbations that require transcriptional adaptation such as heat shock can lead to cell death.

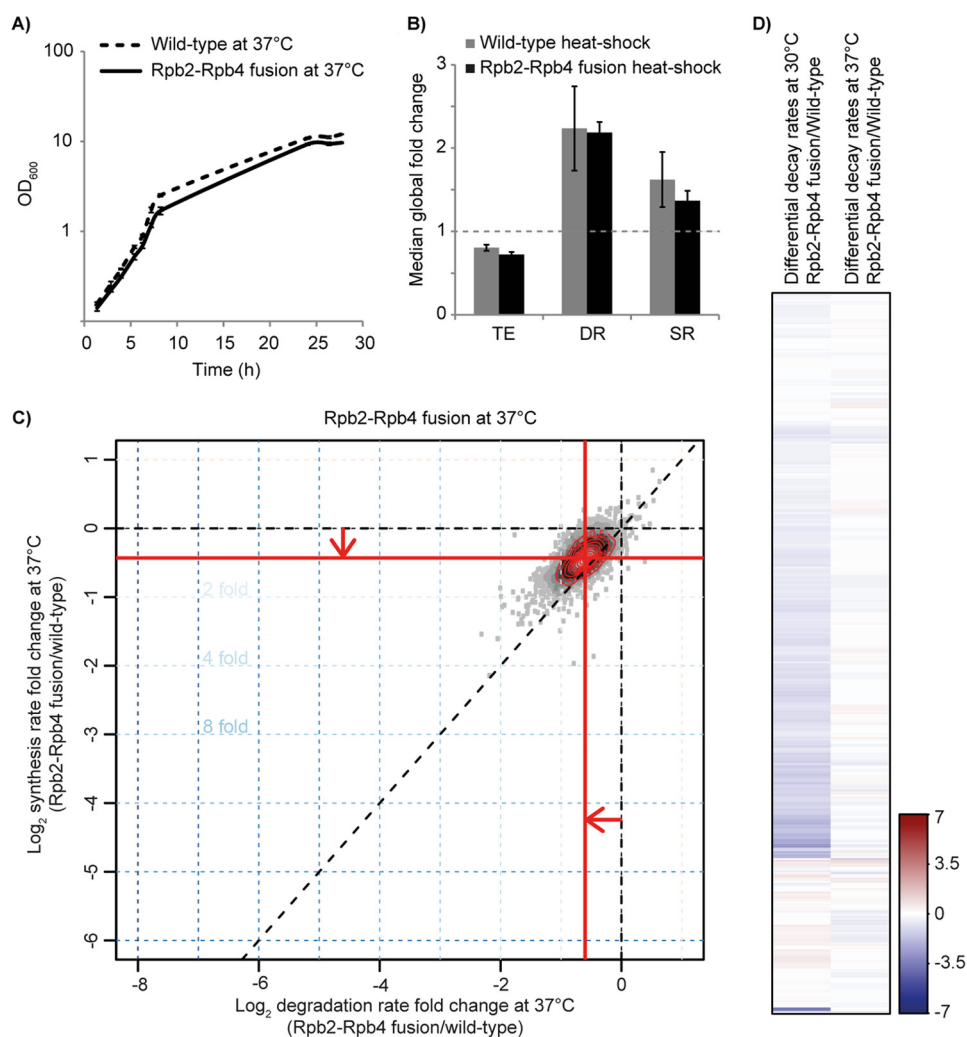


FIGURE 4. **Rpb2-Rpb4 fusion mutant cells are fully capable of adapting to 37 °C.** *A*, growth curves of wild-type and Rpb2-Rpb4 fusion cells at 37 °C in culture. Doubling times were calculated from the slope during logarithmic growth. *OD*, optical density. *B*, median -fold changes of total RNA expression (TE), mRNA DRs, and mRNA SRs between the Rpb2-Rpb4 fusion mutant at 30 and 37 °C (gray bars) and between the wild type at 30 and 37 °C (black bars). The dashed gray line reflects the respective wild-type value that is normalized to one. Error bars indicate S.D. *C*, -fold changes in DRs and SRs for the Rpb2-Rpb4 fusion at 37 °C as compared with the wild type at 37 °C. *D*, heat map comparing DRs between Rpb2-Rpb4 fusion and wild type at 30 and 37 °C. Transcripts colored in blue show lower DRs, and transcripts colored in red show higher DRs. Differences are shown as variation from the median global -fold change after median centering.

Previous studies could not detect the requirement of Rpb4 for normal mRNA synthesis at all genes under optimum growth conditions as they monitored only mRNA levels that are not strongly changed (12, 32) because of mRNA level buffering. Our results are in line with previous findings that Rpb4 occupancy over genes determined by chromatin immunoprecipitation is essentially the same as for the core Pol II subunit Rpb3, indicating that the complete 12-subunit Pol II is the genome-associated form of the enzyme (16, 33). Our results also support previous findings that Rpb4 is required to prevent Pol II inactivation at higher temperatures (10–12).

Our cDTA data further revealed that the severe defects in SRs caused by Rpb4 deletion are compensated by a strong decrease in DRs, leading to a buffering of mRNA levels that is a general phenomenon (1, 2). To further address this, we constructed a yeast strain in which Rpb4 cannot dissociate from the Pol II core enzyme because it is covalently attached to a core subunit. In this Rpb2-Rpb4 fusion strain, the median SR was only slightly lower than in wild type, indicating that the fusion

protein could largely rescue the defect caused by Rpb4 deletion. In addition, the median DR was decreased, again compensating for the mild loss in transcription activity caused by the fusion.

The slightly higher effect on mRNA degradation as compared with the effect on mRNA synthesis may indicate a minor, additional role of Rpb4 in mRNA degradation as suggested (4, 17, 21). It remains possible that at 30 °C, transient dissociation of Rpb4 (15) favors correct degradation of some mRNAs as can be seen from decreased DRs of some mRNAs at 30 °C but not at 37 °C (Fig. 4D). However, if this occurs, it is not a global phenomenon. Also, the observed minor effects in the fusion mutant are too small as compared with the very large effects of Rpb4 deletion to take them as evidence for a general role of Rpb4/7 in mRNA degradation. The Rpb2-Rpb4 fusion mRNA is expressed from a plasmid, which may result in higher protein levels of the fusion protein as compared with Rpb4 in wild-type cells. However, excess fusion protein is not incorporated into Pol II and cannot function in coupling of transcription and mRNA degradation as suggested (4, 18–20). Additionally, if

Rpb4 Functions Mainly in mRNA Synthesis

Rpb4 had a function in mRNA degradation independent of its function through Pol II, we would expect higher degradation rates due to higher levels in the cytoplasm (Fig. 2, E–F), but this is not at all observed. Indeed, the observed mild effects on mRNA degradation in the Rpb2-Rpb4 fusion mutant may be explained in part by the general mRNA buffering mechanism and in part by impaired RNA 3'-end processing that depends on Rpb4 (34) and likely enhances mRNA degradation during RNA surveillance. This is supported by the fact that there is no difference in mRNA metabolism during heat shock in wild type and Rpb2-Rpb4 fusion mutant. Thus, Rpb4 functions predominantly in nuclear mRNA synthesis by Pol II.

Acknowledgment—We thank Björn Schwab for bioinformatics advice and critically reading the manuscript.

REFERENCES

1. Sun, M., Schwab, B., Schulz, D., Pirkel, N., Etzold, S., Larivière, L., Maier, K. C., Seitzl, M., Tresch, A., and Cramer, P. (2012) Comparative dynamic transcriptome analysis (cDTA) reveals mutual feedback between mRNA synthesis and degradation. *Genome Res.* **22**, 1350–1359
2. Sun, M., Schwab, B., Pirkel, N., Maier, K. C., Schenk, A., Failmeizger, H., Tresch, A., and Cramer, P. (2013) Global analysis of eukaryotic mRNA degradation reveals Xrn1-dependent buffering of transcript levels. *Mol. Cell* **52**, 52–62
3. Shalem, O., Dahan, O., Levo, M., Martinez, M. R., Furman, I., Segal, E., and Pilpel, Y. (2008) Transient transcriptional responses to stress are generated by opposing effects of mRNA production and degradation. *Mol. Syst. Biol.* **4**, 223
4. Goler-Baron, V., Selitrennik, M., Barkai, O., Haimovich, G., Lotan, R., and Choder, M. (2008) Transcription in the nucleus and mRNA decay in the cytoplasm are coupled processes. *Genes Dev.* **22**, 2022–2027
5. Bregman, A., Avraham-Kelbert, M., Barkai, O., Duek, L., Guterman, A., and Choder, M. (2011) Promoter elements regulate cytoplasmic mRNA decay. *Cell* **147**, 1473–1483
6. Haimovich, G., Medina, D. A., Causse, S. Z., Garber, M., Millán-Zambrano, G., Barkai, O., Chávez, S., Pérez-Ortín, J. E., Darzacq, X., and Choder, M. (2013) Gene expression is circular: factors for mRNA degradation also foster mRNA synthesis. *Cell* **153**, 1000–1011
7. Malagon, F., Kireeva, M. L., Shafer, B. K., Lubkowska, L., Kashlev, M., and Strathern, J. N. (2006) Mutations in the *Saccharomyces cerevisiae* *RPB1* gene conferring hypersensitivity to 6-azauracil. *Genetics* **172**, 2201–2209
8. Ruan, W., Lehmann, E., Thomm, M., Kostrewa, D., and Cramer, P. (2011) Evolution of two modes of intrinsic RNA polymerase transcript cleavage. *J. Biol. Chem.* **286**, 18701–18707
9. Walmacq, C., Kireeva, M. L., Irvin, J., Nedialkov, Y., Lubkowska, L., Malagon, F., Strathern, J. N., and Kashlev, M. (2009) Rpb9 subunit controls transcription fidelity by delaying NTP sequestration in RNA polymerase II. *J. Biol. Chem.* **284**, 19601–19612
10. Rosenheck, S., and Choder, M. (1998) Rpb4, a subunit of RNA polymerase II, enables the enzyme to transcribe at temperature extremes *in vitro*. *J. Bacteriol.* **180**, 6187–6192
11. Maillet, I., Buhler, J. M., Sentenac, A., and Labarre, J. (1999) Rpb4p is necessary for RNA polymerase II activity at high temperature. *J. Biol. Chem.* **274**, 22586–22590
12. Miyao, T., Barnett, J. D., and Woychik, N. A. (2001) Deletion of the RNA polymerase subunit RPB4 acts as a global, not stress-specific, shut-off switch for RNA polymerase II transcription at high temperatures. *J. Biol. Chem.* **276**, 46408–46413
13. Choder, M., and Young, R. A. (1993) A portion of RNA polymerase II molecules has a component essential for stress responses and stress survival. *Mol. Cell. Biol.* **13**, 6984–6991
14. Edwards, A. M., Kane, C. M., Young, R. A., and Kornberg, R. D. (1991) Two dissociable subunits of yeast RNA polymerase II stimulate the initiation of transcription at a promoter *in vitro*. *J. Biol. Chem.* **266**, 71–75
15. Mosley, A. L., Hunter, G. O., Sardi, M. E., Smolle, M., Workman, J. L., Florens, L., and Washburn, M. P. (2013) Quantitative proteomics demonstrates that the RNA polymerase II subunits Rpb4 and Rpb7 dissociate during transcriptional elongation. *Mol. Cell. Proteomics* **12**, 1530–1538
16. Jasiak, A. J., Hartmann, H., Karakasli, E., Kalocsay, M., Flatley, A., Kremmer, E., Strässer, K., Martin, D. E., Söding, J., and Cramer, P. (2008) Genome-associated RNA polymerase II includes the dissociable Rpb4/7 subcomplex. *J. Biol. Chem.* **283**, 26423–26427
17. Farago, M., Nahari, T., Hammel, C., Cole, C. N., and Choder, M. (2003) Rpb4p, a subunit of RNA polymerase II, mediates mRNA export during stress. *Mol. Biol. Cell* **14**, 2744–2755
18. Harel-Sharvit, L., Eldad, N., Haimovich, G., Barkai, O., Duek, L., and Choder, M. (2010) RNA polymerase II subunits link transcription and mRNA decay to translation. *Cell* **143**, 552–563
19. Selitrennik, M., Duek, L., Lotan, R., and Choder, M. (2006) Nucleocytoplasmic shuttling of the Rpb4p and Rpb7p subunits of *Saccharomyces cerevisiae* RNA polymerase II by two pathways. *Eukaryot. Cell* **5**, 2092–2103
20. Haimovich, G., Choder, M., Singer, R. H., and Trcek, T. (2013) The fate of the messenger is pre-determined: a new model for regulation of gene expression. *Biochim. Biophys. Acta* **1829**, 643–653
21. Lotan, R., Bar-On, V. G., Harel-Sharvit, L., Duek, L., Melamed, D., and Choder, M. (2005) The RNA polymerase II subunit Rpb4p mediates decay of a specific class of mRNAs. *Genes Dev.* **19**, 3004–3016
22. Lotan, R., Goler-Baron, V., Duek, L., Haimovich, G., and Choder, M. (2007) The Rpb7p subunit of yeast RNA polymerase II plays roles in the two major cytoplasmic mRNA decay mechanisms. *J. Cell Biol.* **178**, 1133–1143
23. Choder, M. (2011) mRNA imprinting: additional level in the regulation of gene expression. *Cell. Logist.* **1**, 37–40
24. Dahan, N., and Choder, M. (2013) The eukaryotic transcriptional machinery regulates mRNA translation and decay in the cytoplasm. *Biochim. Biophys. Acta* **1829**, 169–173
25. Higuchi, R., Krummel, B., and Saiki, R. K. (1988) A general method of *in vitro* preparation and specific mutagenesis of DNA fragments: study of protein and DNA interactions. *Nucleic Acids Res.* **16**, 7351–7367
26. Longtine, M. S., McKenzie, A., 3rd, Demarini, D. J., Shah, N. G., Wach, A., Brachat, A., Philippsen, P., and Pringle, J. R. (1998) Additional modules for versatile and economical PCR-based gene deletion and modification in *Saccharomyces cerevisiae*. *Yeast* **14**, 953–961
27. Schwab, B., Schulz, D., Sun, M., Zacher, B., Dümcke, S., Martin, D. E., Cramer, P., and Tresch, A. (2012) Measurement of genome-wide RNA synthesis and decay rates with Dynamic Transcriptome Analysis (DTA). *Bioinformatics* **28**, 884–885
28. Miller, C., Schwab, B., Maier, K., Schulz, D., Dümcke, S., Zacher, B., Mayer, A., Sydow, J., Marcinowski, L., Dölken, L., Martin, D. E., Tresch, A., and Cramer, P. (2011) Dynamic transcriptome analysis measures rates of mRNA synthesis and decay in yeast. *Mol. Syst. Biol.* **7**, 458
29. Lovén, J., Orlando, D. A., Sigova, A. A., Lin, C. Y., Rahl, P. B., Burge, C. B., Levens, D. L., Lee, T. I., and Young, R. A. (2012) Revisiting global gene expression analysis. *Cell* **151**, 476–482
30. Duan, R., Rhie, B. H., Ryu, H. Y., and Ahn, S. H. (2013) The RNA polymerase II Rpb4/7 subcomplex regulates cellular lifespan through an mRNA decay process. *Biochem. Biophys. Res. Commun.* **441**, 266–270
31. Armache, K. J., Mitterweger, S., Meinhart, A., and Cramer, P. (2005) Structures of complete RNA polymerase II and its subcomplex, Rpb4/7. *J. Biol. Chem.* **280**, 7131–7134
32. Pillai, B., Verma, J., Abraham, A., Francis, P., Kumar, Y., Tatu, U., Brahmachari, S. K., and Sadhale, P. P. (2003) Whole genome expression profiles of yeast RNA polymerase II core subunit, Rpb4, in stress and nonstress conditions. *J. Biol. Chem.* **278**, 3339–3346
33. Verma-Gaur, J., Rao, S. N., Taya, T., and Sadhale, P. (2008) Genomewide recruitment analysis of Rpb4, a subunit of polymerase II in *Saccharomyces cerevisiae*, reveals its involvement in transcription elongation. *Eukaryot. Cell* **7**, 1009–1018
34. Runner, V. M., Podolny, V., and Buratowski, S. (2008) The Rpb4 subunit of RNA polymerase II contributes to cotranscriptional recruitment of 3' processing factors. *Mol. Cell. Biol.* **28**, 1883–1891