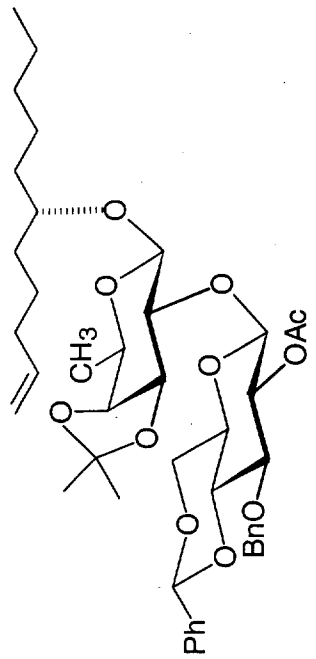
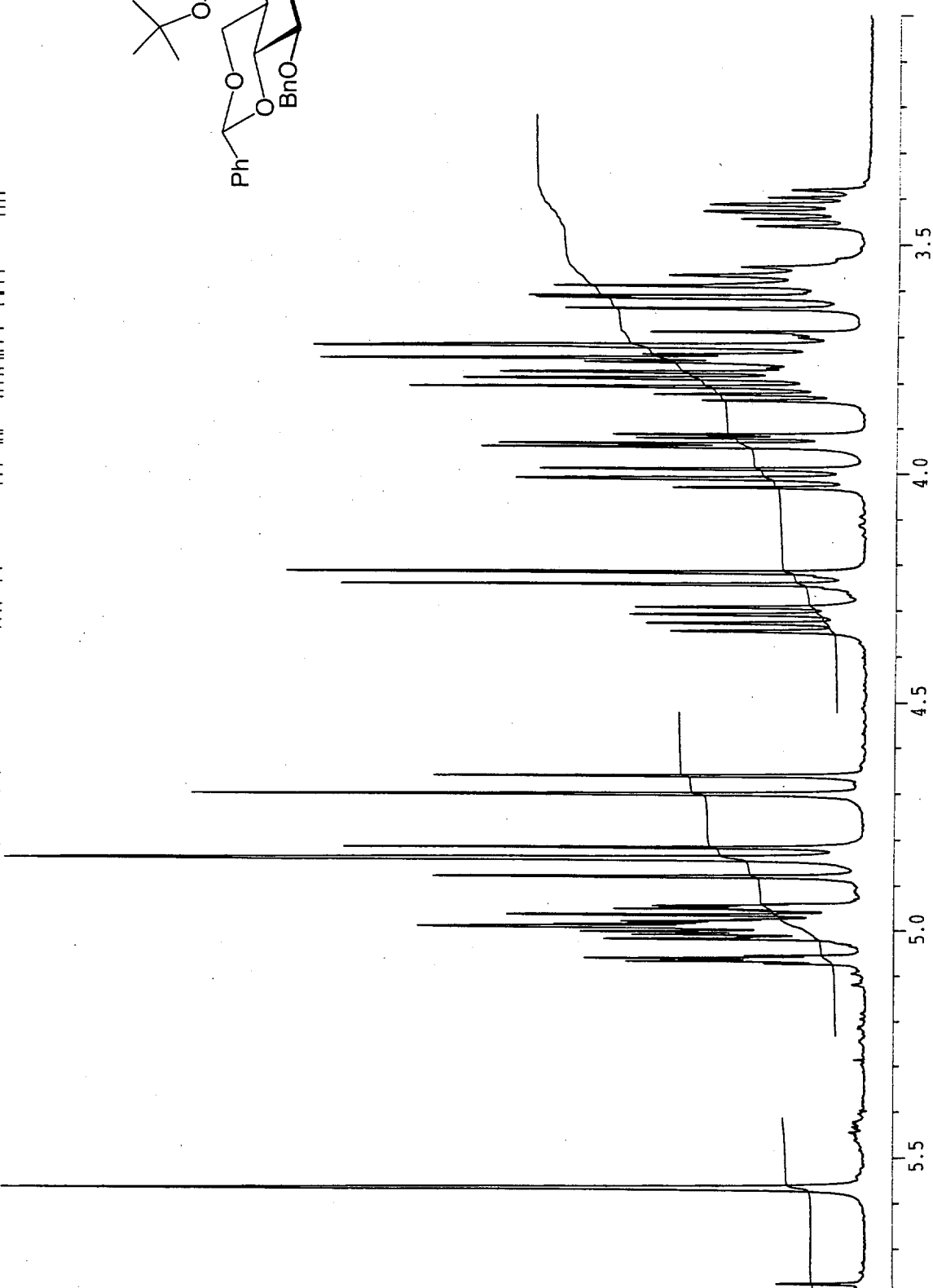


1520.34
1518.24
1506.02
1503.19
1501.08
1497.67
1496.29
1495.17
1494.12
1489.98
1486.11
1485.01
1483.94
1464.82
1453.44
1445.94
1411.05
1398.89
1303.79
1298.82
1293.32
1288.36
1273.05
1265.29
1209.92
1204.04
1197.66
1182.66
1180.59
1176.95
1174.86
1152.22
1148.08
1143.04
1137.83
1133.92
1127.52
1125.16
1122.51
1116.77
1107.70
1092.23
1085.63
1084.50
1077.88
1071.02
1034.21
1029.28
1024.94
1019.99

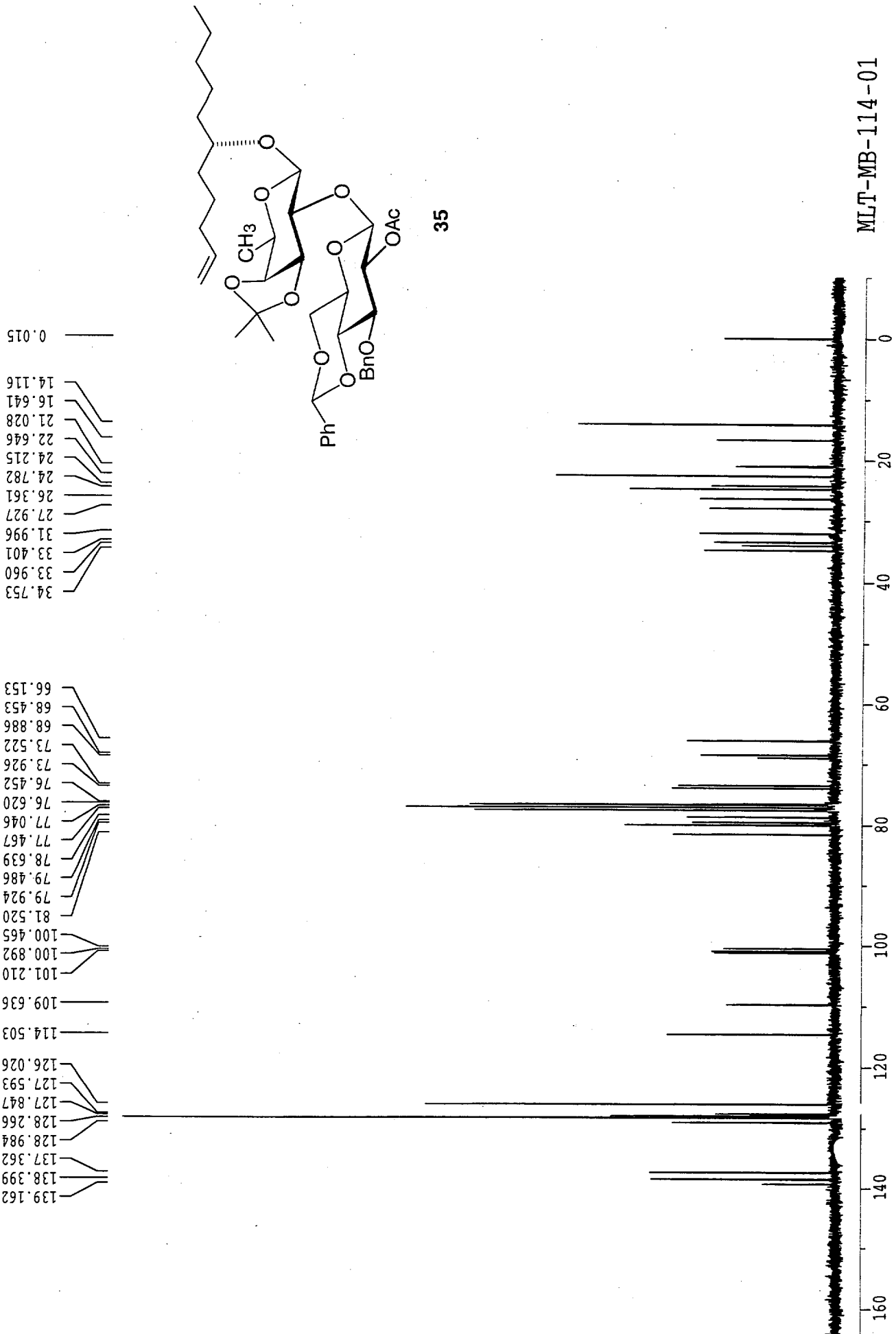


35



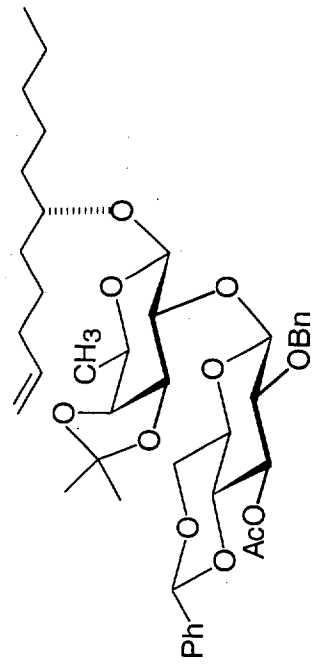
MLT-MB-114-01

5.5 5.0 4.5 4.0 3.5

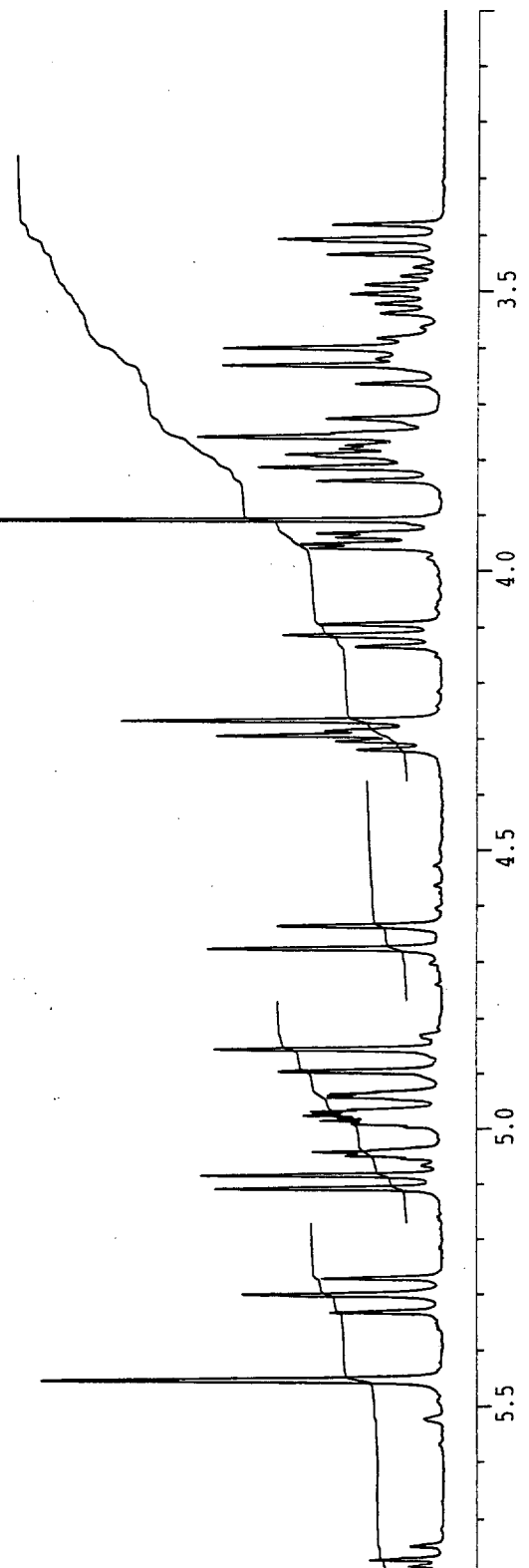


MLT-MB-114-01

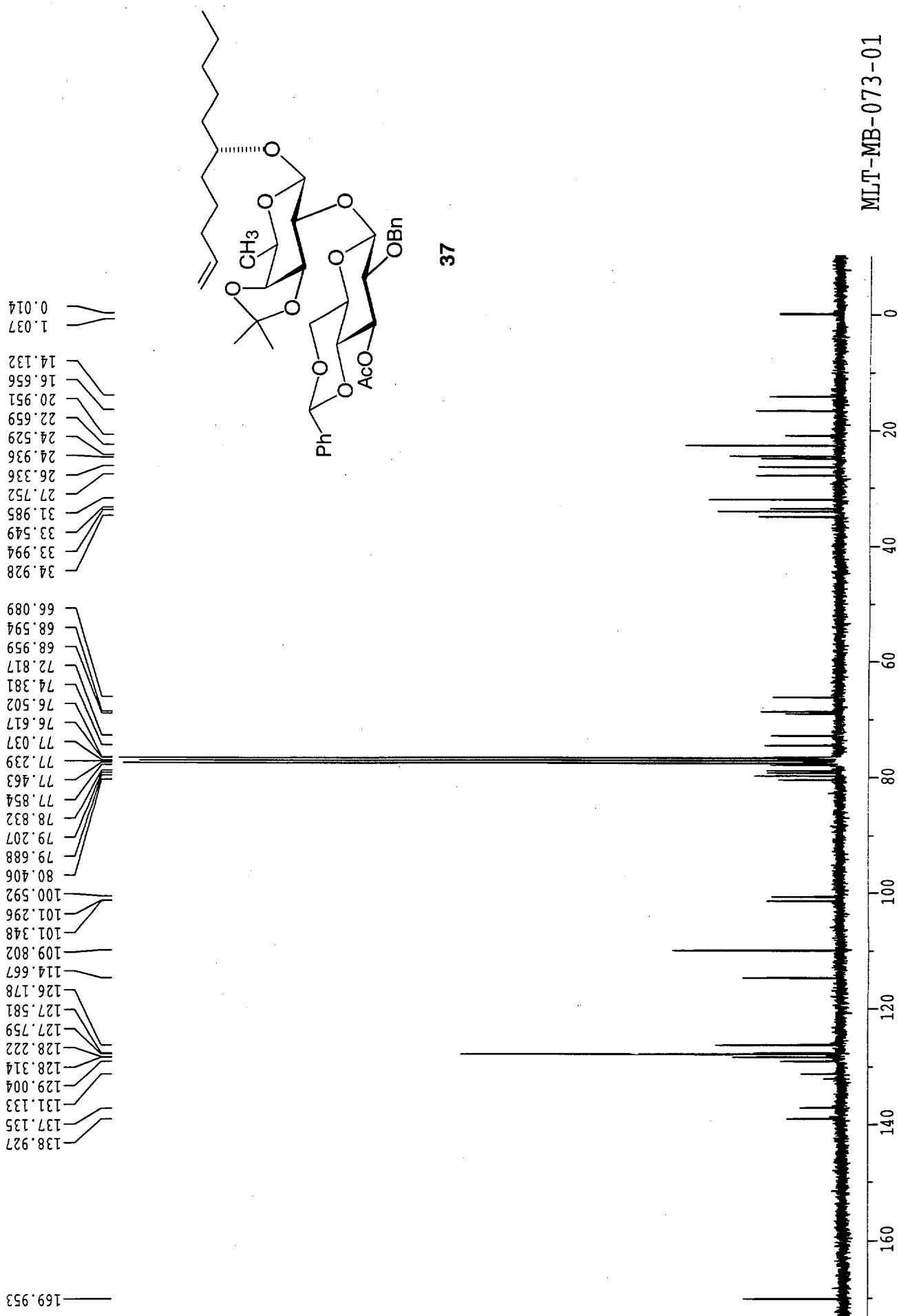
- 1636.30
- 1599.80
- 1590.35
- 1581.62
- 1533.04
- 1525.65
- 1515.14
- 1513.10
- 1495.95
- 1494.49
- 1493.38
- 1492.31
- 1491.28
- 1483.18
- 1482.14
- 1481.09
- 1469.57
- 1457.51
- 1403.55
- 1391.50
- 1296.80
- 1291.93
- 1288.97
- 1286.47
- 1281.26
- 1241.37
- 1234.89
- 1229.03
- 1188.09
- 1186.03
- 1182.46
- 1180.36
- 1173.71
- 1172.69
- 1151.93
- 1144.27
- 1137.56
- 1134.71
- 1132.71
- 1128.31
- 1118.45
- 1099.53
- 1090.11
- 1086.31
- 1080.66
- 1075.16
- 1061.84
- 1057.05
- 1052.11
- 1047.28
- 1042.62
- 1031.22
- 1022.69
- 1015.14



37

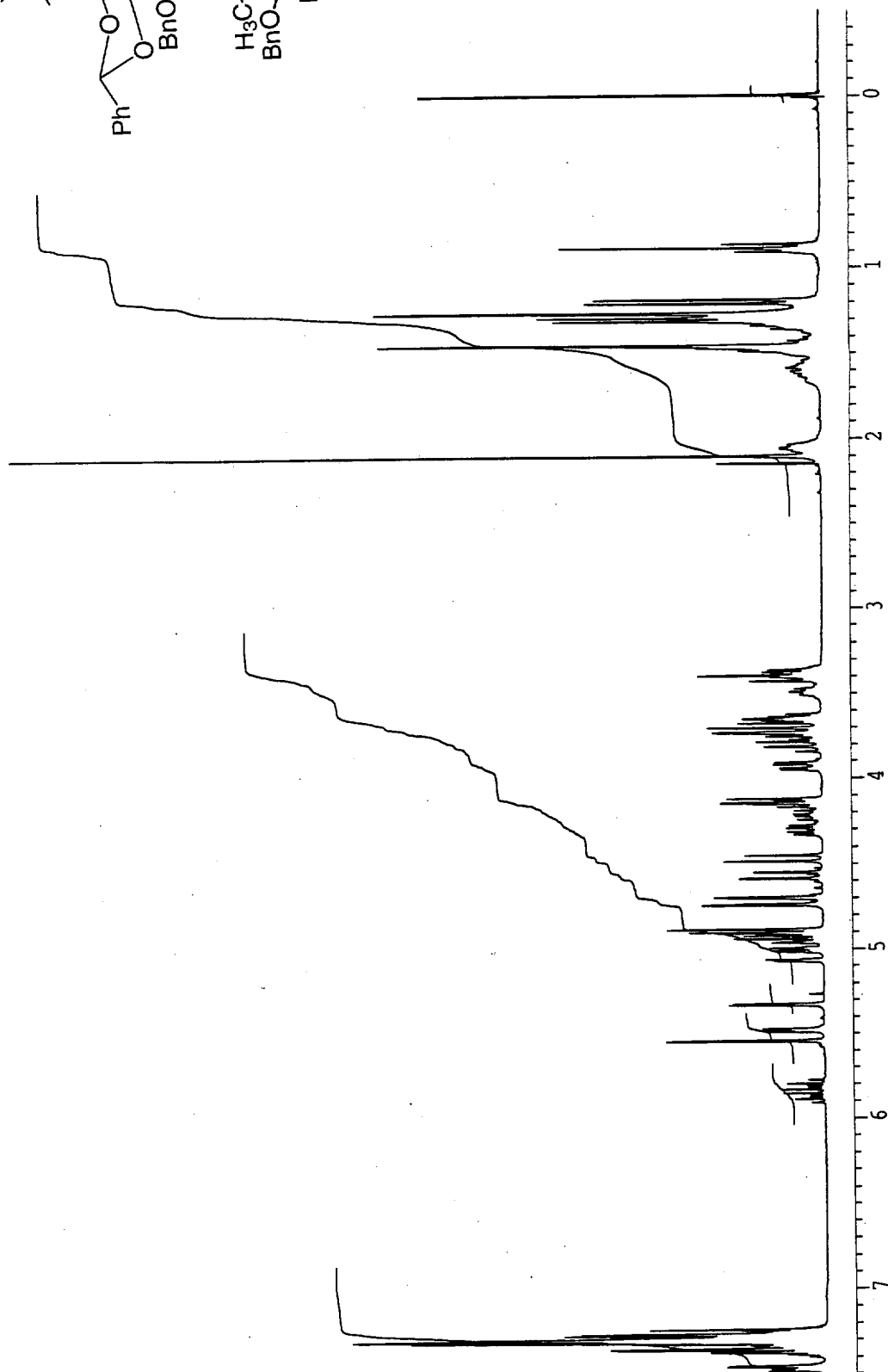
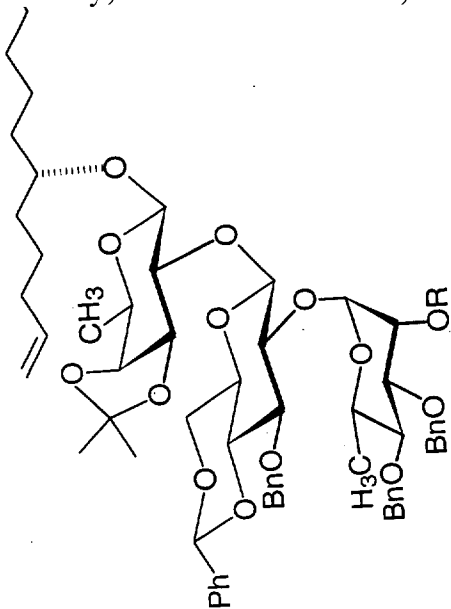


MLT-MB-073-01



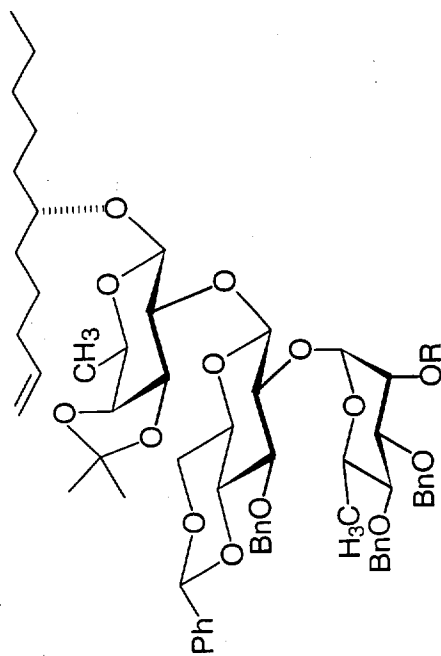
MLT-MB-073-01

2191.99
2189.64
2188.40
2187.57
2186.27
2181.83
2180.96
2179.07
2171.19
1663.00
1645.41
1599.69
1597.87
1482.26
1476.92
1473.11
1471.16
1465.73
1422.51
1420.51
1411.38
1409.25
1376.30
1365.59
1345.60
1334.34
1245.42
1244.09
1236.50
1136.34
1120.33
1111.46
1102.46
1096.12
1094.84
1028.72
1019.47
644.83
631.47
629.18
447.02
441.74
437.62
408.67
402.44
394.70
388.47
384.41
380.53
363.13
356.58
272.80
266.17
259.10
22.76
0.00

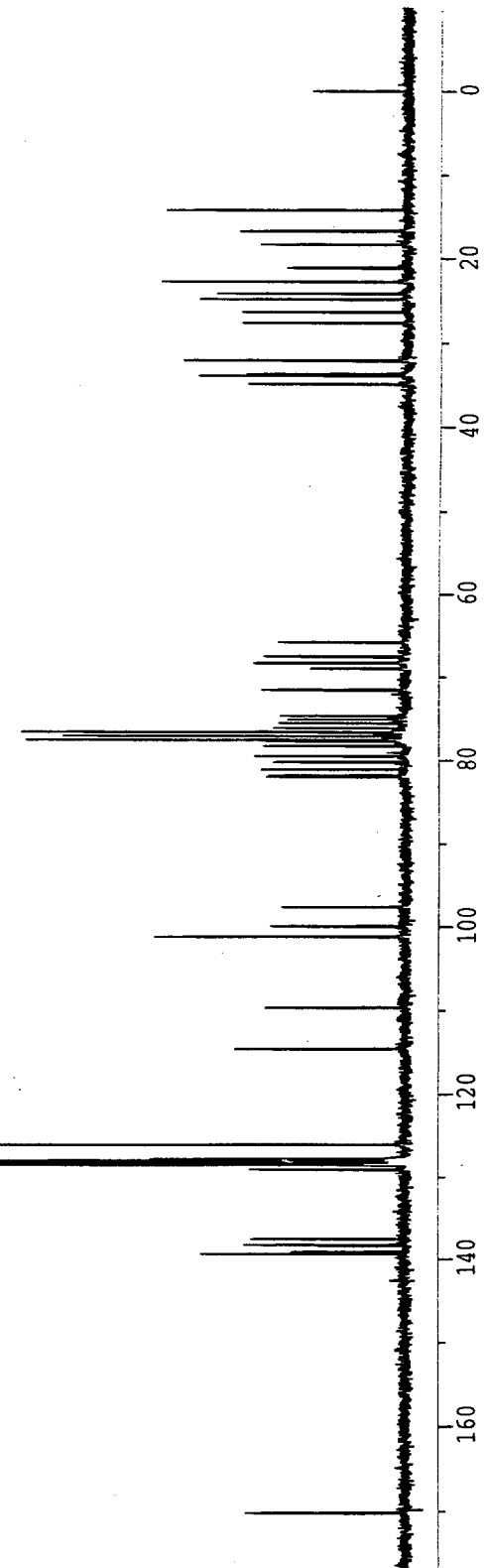


MLT-MB-099-02

170.039
139.207
138.173
138.067
137.399
128.932
128.401
128.337
128.239
127.947
127.819
127.692
127.628
127.609
125.976
114.476
109.588
101.123
99.884
97.526
81.995
81.787
81.110
80.174
79.434
78.173
77.692
77.463
77.040
76.616
76.191
75.601
75.159
74.711
71.575
68.339
68.238
67.528
65.868
34.902
33.967
33.701
32.020
27.676
26.299
24.779
24.122
22.631
21.045
18.292
16.615
14.102
0.000

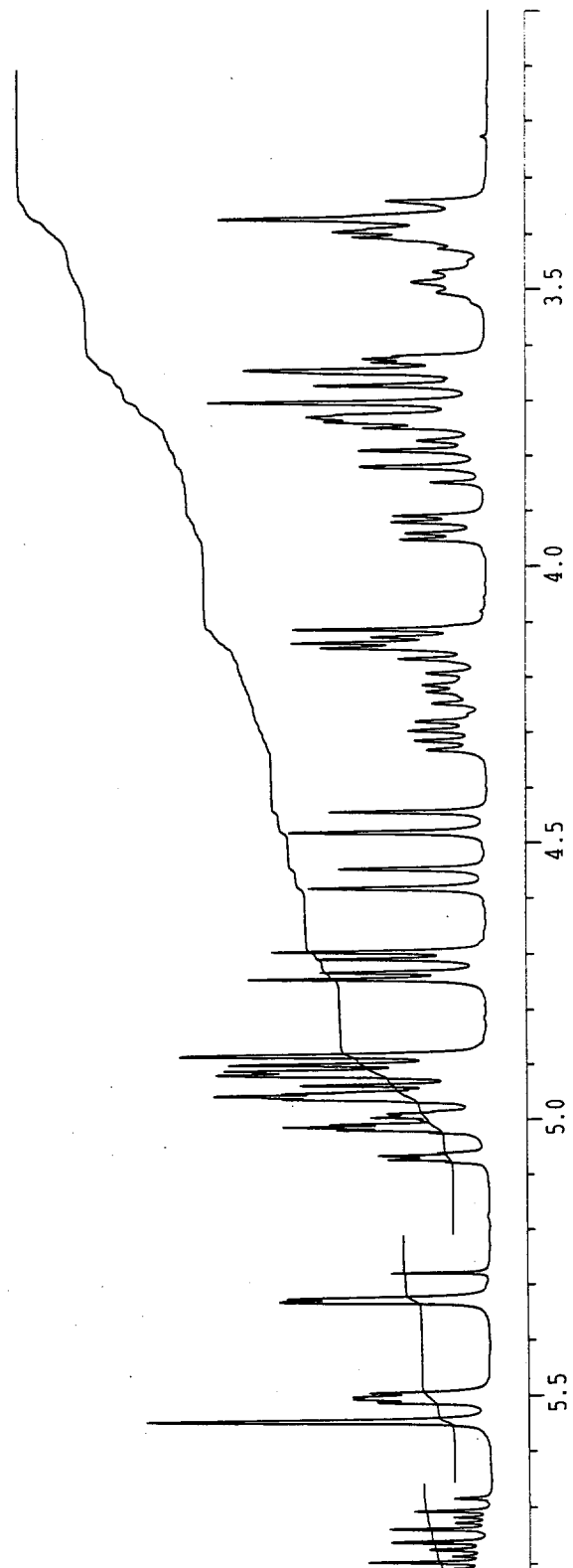
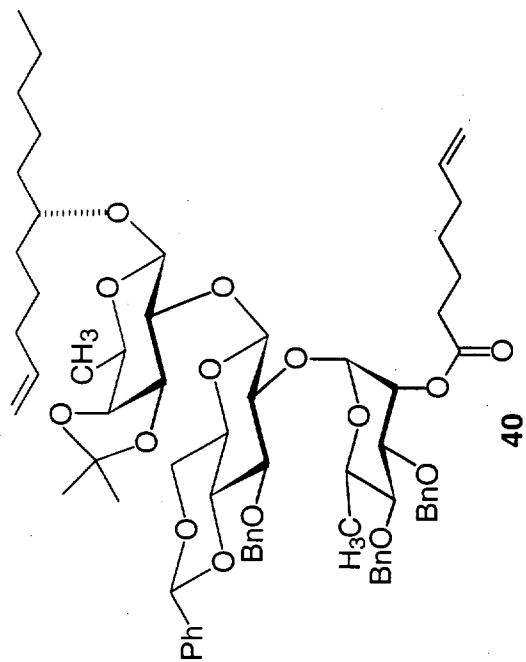


38 R = Ac

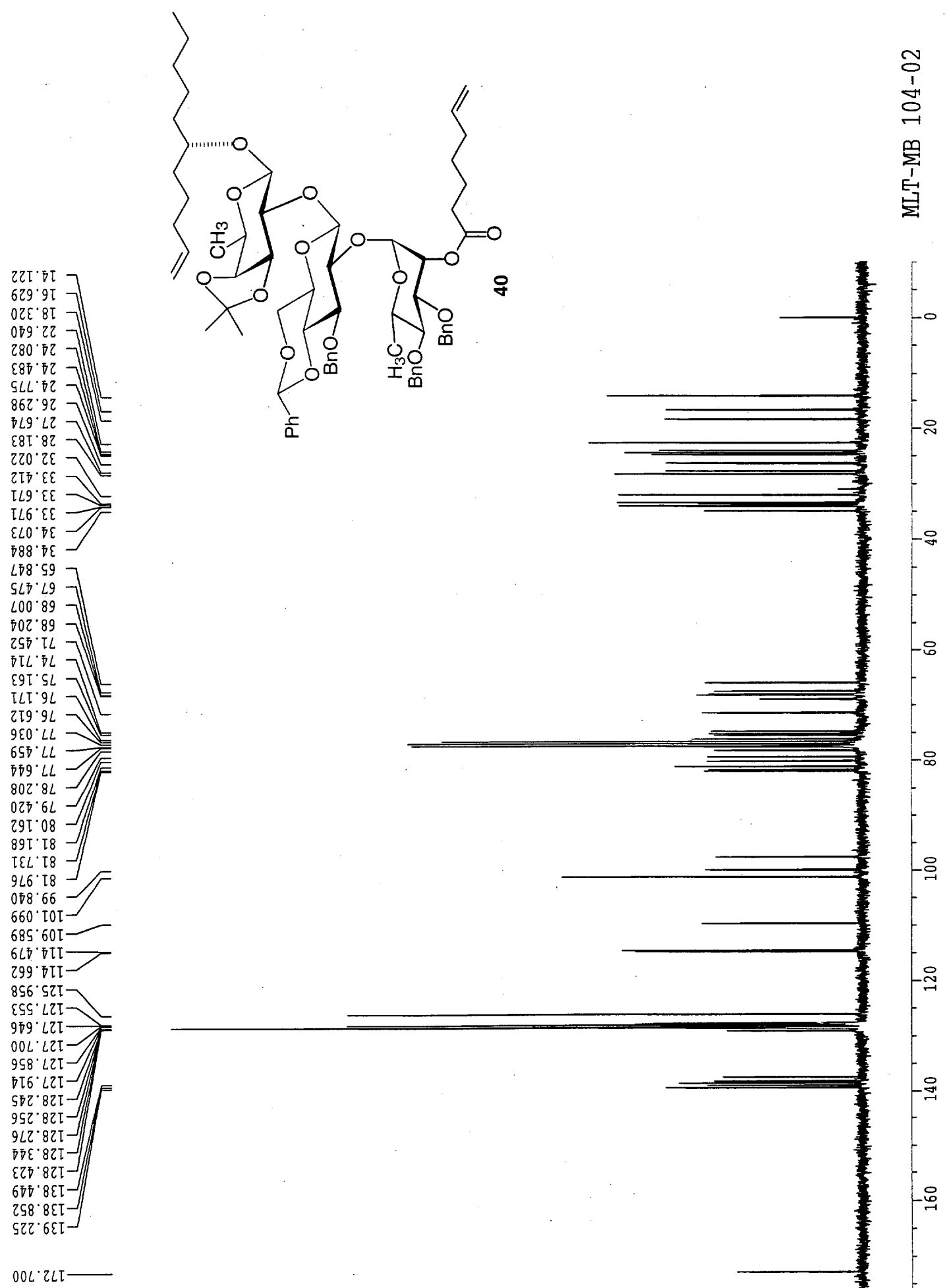


MLT-MB-099-02

3.34426
3.37523
3.39699
3.40619
3.62035
3.62528
3.63179
3.64567
3.67234
3.70320
3.72959
3.73903
3.75007
3.79084
3.81938
3.90935
3.92027
3.95085
4.11237
4.12688
4.13764
4.14651
4.16691
4.44379
4.48116
4.54537
4.58098
4.69506
4.70819
4.73250
4.74508
4.88403
4.89938
4.91002
4.91705
4.93612
4.94289
4.95015
4.95434
4.96099
4.98776
4.99130
4.99486
5.00747
5.01285
5.01870
5.06447
5.07129
5.27726
5.32392
5.32954
5.49328
5.49988
5.50357
5.51020
5.54512

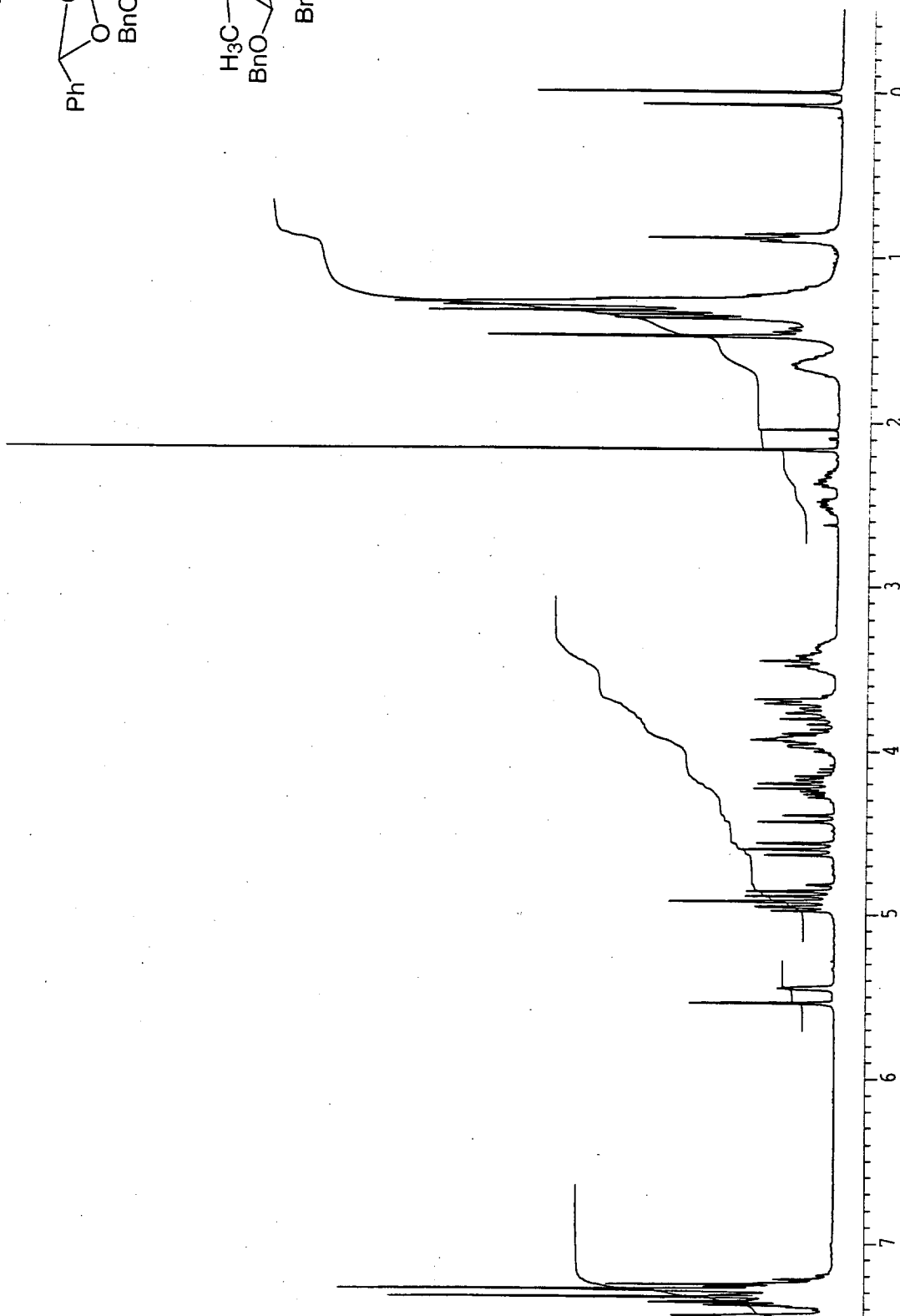
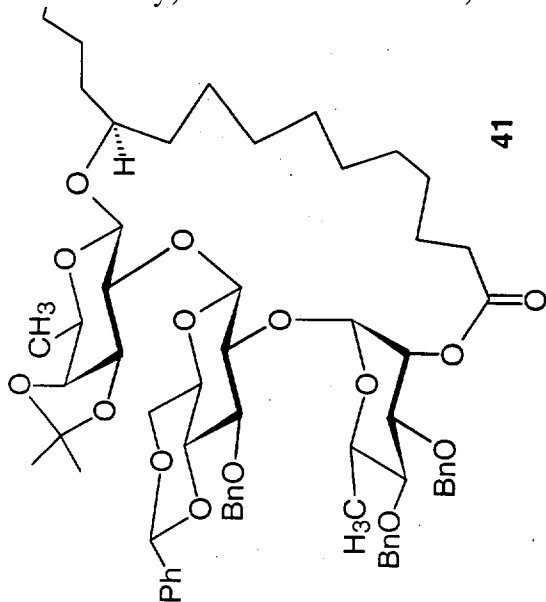


MLT-MB 104-02



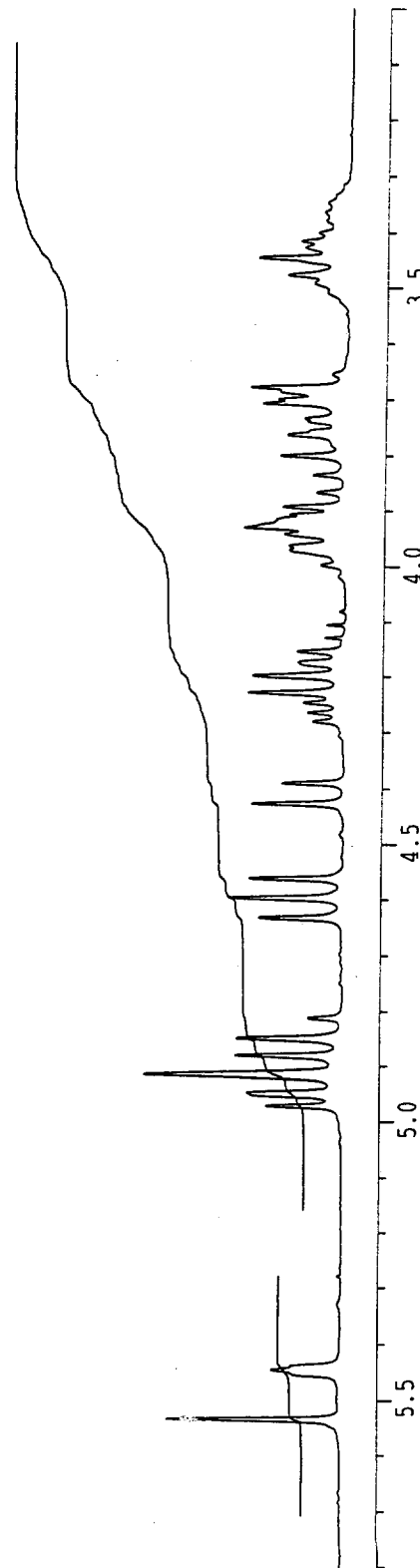
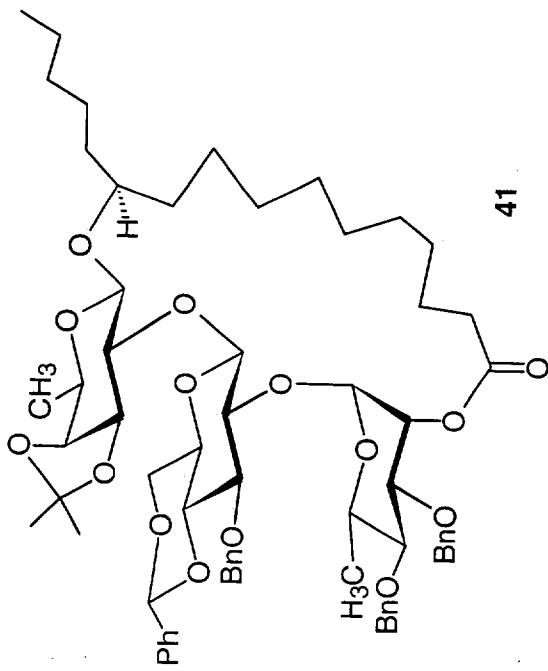
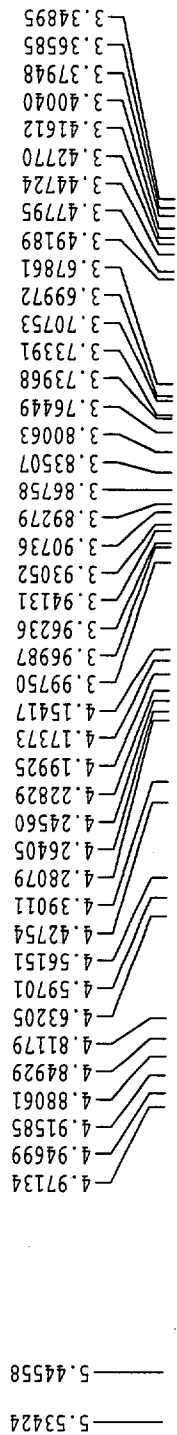
MLT-MB 104-02

7.3667
7.3563
7.3488
7.3249
7.3102
7.2825
7.2739
7.2587
7.2447
5.5342
5.4456
4.9713
4.9470
4.9159
4.8806
4.8493
4.6321
4.5970
4.5615
4.4275
4.3901
4.2283
4.1993
3.9624
3.9413
3.9305
3.9074
3.8928
3.8006
3.7645
3.7075
3.6997
3.6786
3.4779
3.4472
2.1613
2.0392
1.4833
1.4554
1.4322
1.3733
1.3514
1.3285
1.2950
1.2837
1.2766
1.2538
1.2304
1.2042
0.9010
0.8803
0.8564
0.8547
0.7477
0.724
0.724
0.0003
-0.0015

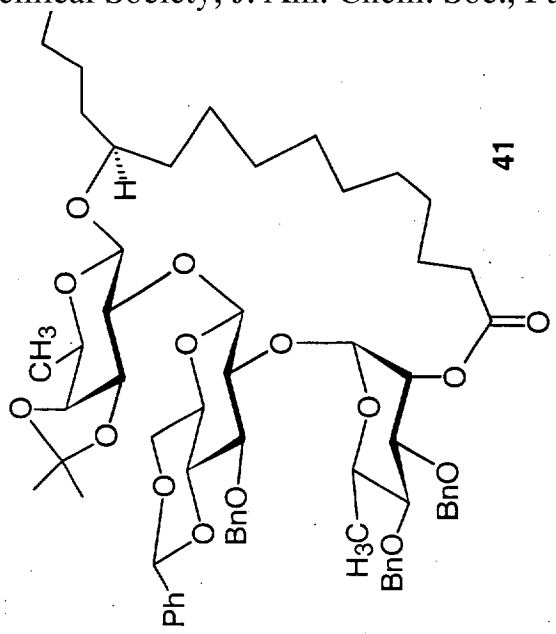


MLT-MB 108-01

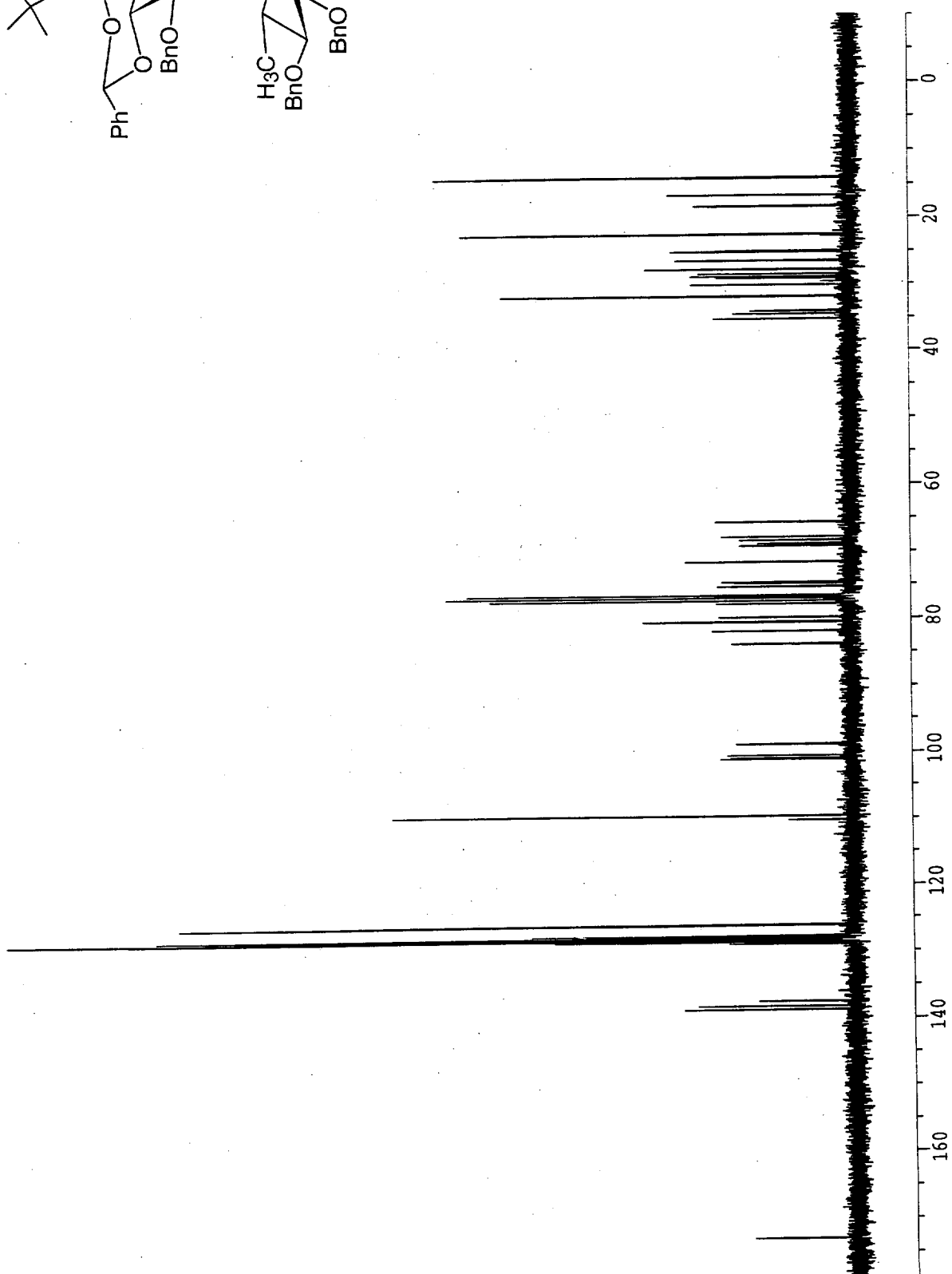
MLT-MB 108-01



MLT-MB 108-01

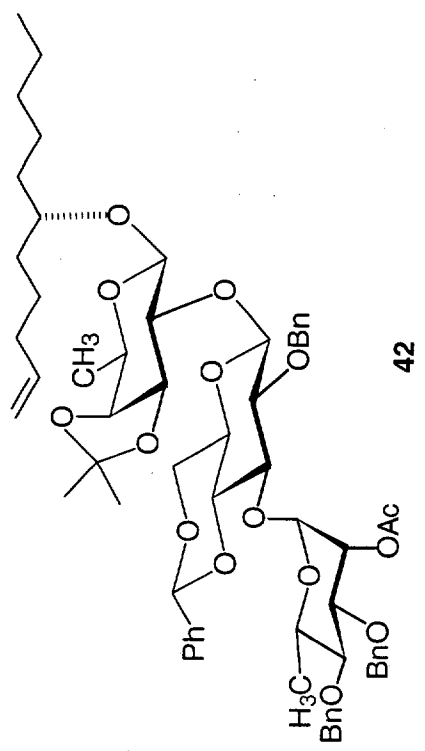


- 14.132
- 16.724
- 18.430
- 22.623
- 25.034
- 25.167
- 26.563
- 27.816
- 27.844
- 28.530
- 28.941
- 29.154
- 30.247
- 31.921
- 34.463
- 35.227
- 65.618
- 67.956
- 68.431
- 69.201
- 71.585
- 74.722
- 74.927
- 75.358
- 76.615
- 76.757
- 77.038
- 77.462
- 77.913
- 79.862
- 80.514
- 80.541
- 81.923
- 83.855
- 98.779
- 100.519
- 100.921
- 101.106
- 109.620
- 126.010
- 127.616
- 127.646
- 127.942
- 127.967
- 128.217
- 128.268
- 128.328
- 128.346
- 128.573
- 128.911
- 138.106
- 138.140
- 138.691

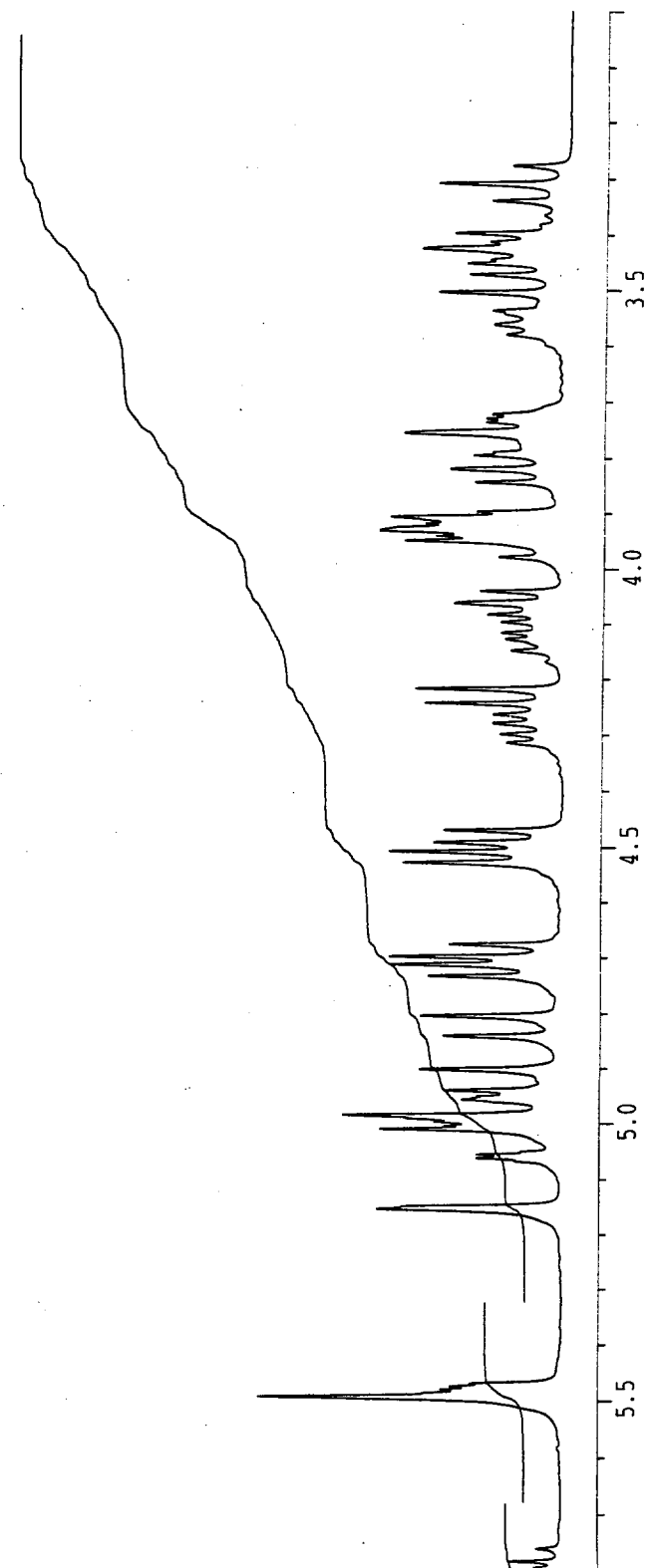


172.982

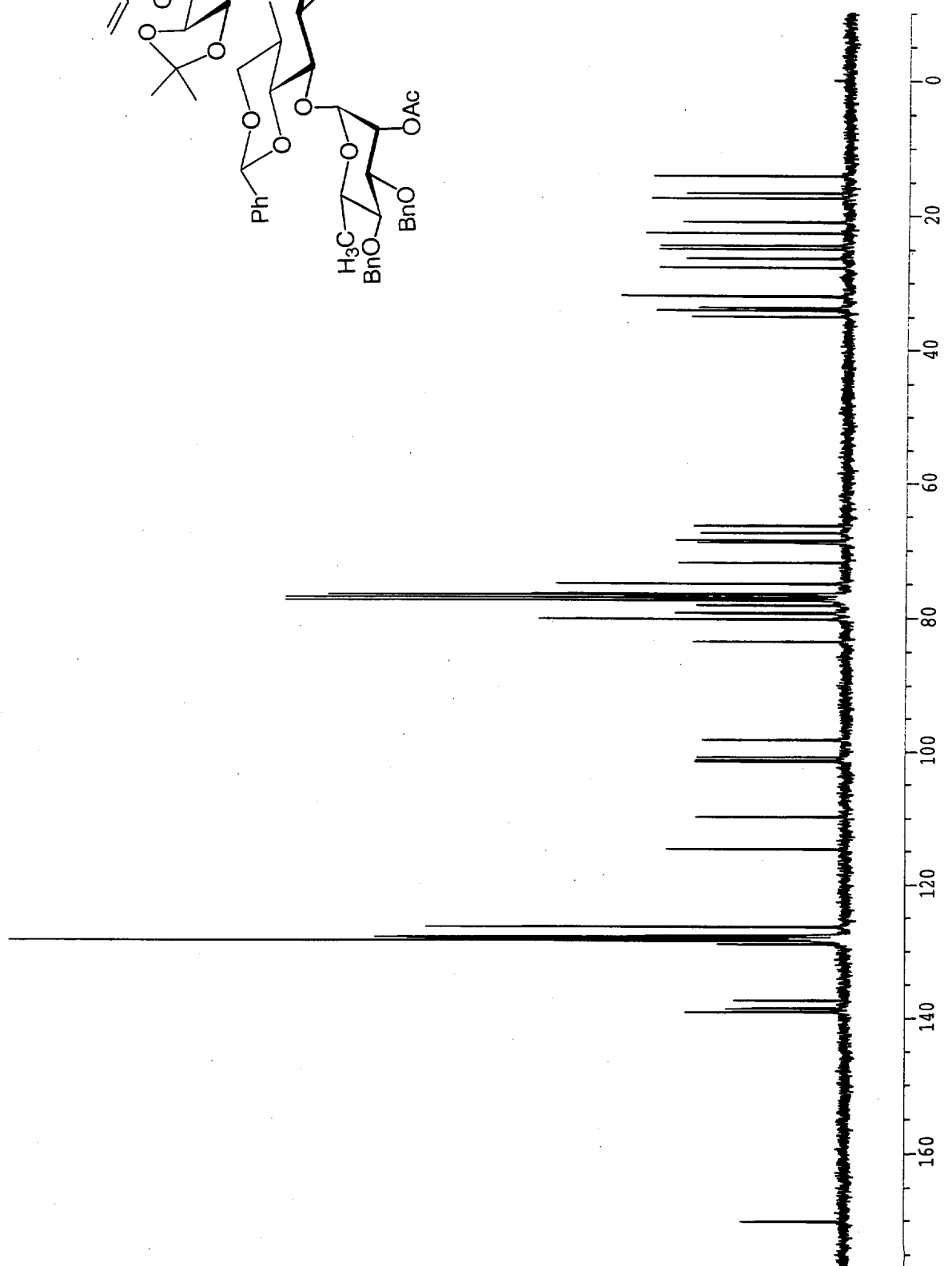
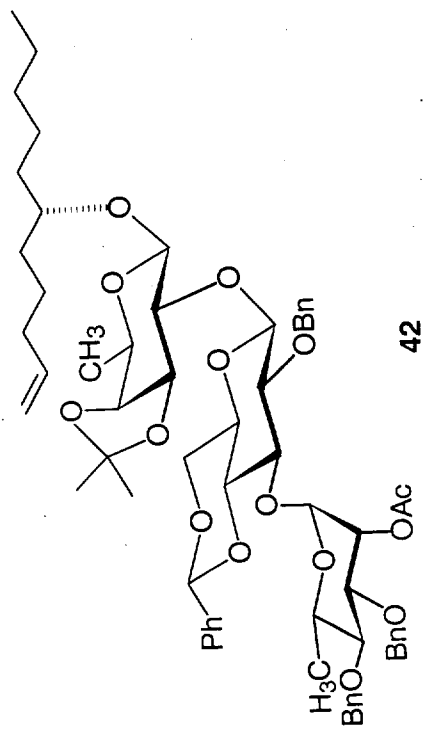
- 5.80162
- 5.7955
- 5.49274
- 5.47967
- 5.47114
- 5.46854
- 5.15414
- 5.06083
- 5.05466
- 5.01033
- 5.00386
- 4.99696
- 4.99035
- 4.98479
- 4.95646
- 4.95331
- 4.94973
- 4.93837
- 4.90155
- 4.84132
- 4.80468
- 4.73535
- 4.71375
- 4.69901
- 4.67693
- 4.52868
- 4.50804
- 4.49212
- 4.47163
- 4.24365
- 4.21779
- 4.08278
- 4.06298
- 4.0188
- 3.94860
- 3.94008
- 3.93078
- 3.91868
- 3.90772
- 3.89796
- 3.84411
- 3.82075
- 3.79569
- 3.75705
- 3.73646
- 3.72975
- 3.53596
- 3.50457
- 3.47358
- 3.45252
- 3.44561
- 3.42644
- 3.41367
- 3.39774
- 3.34152
- 3.30979



42



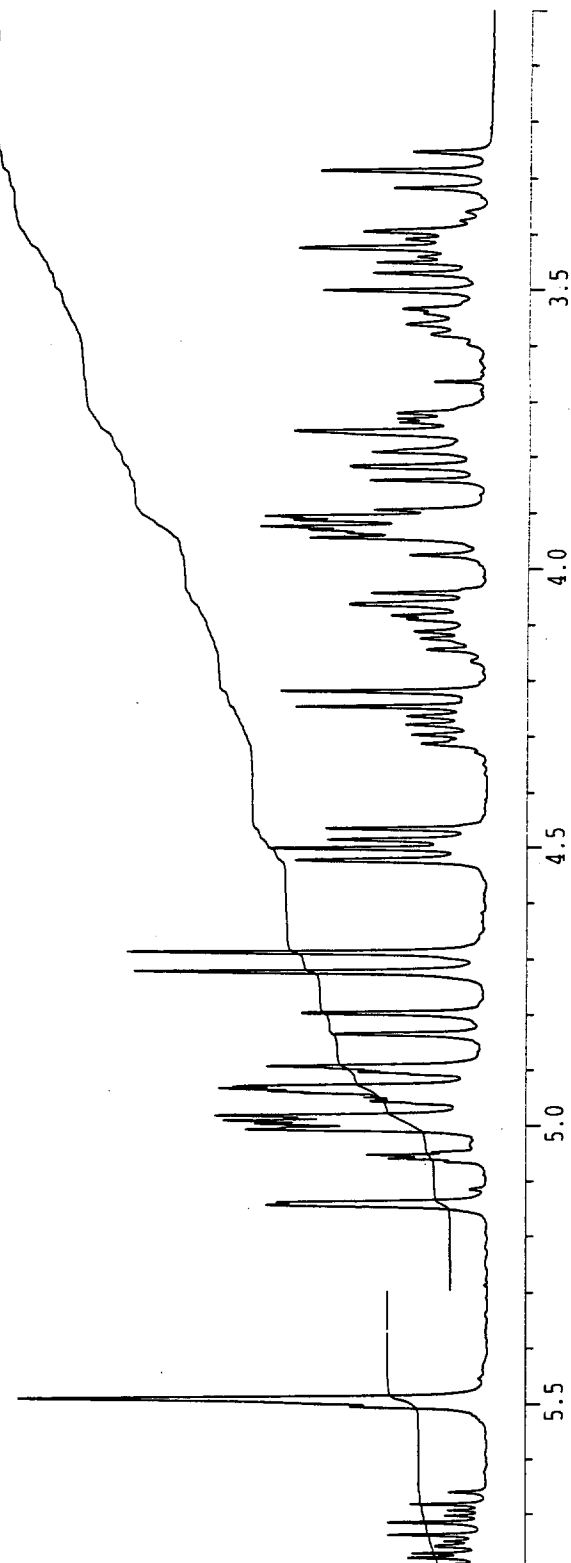
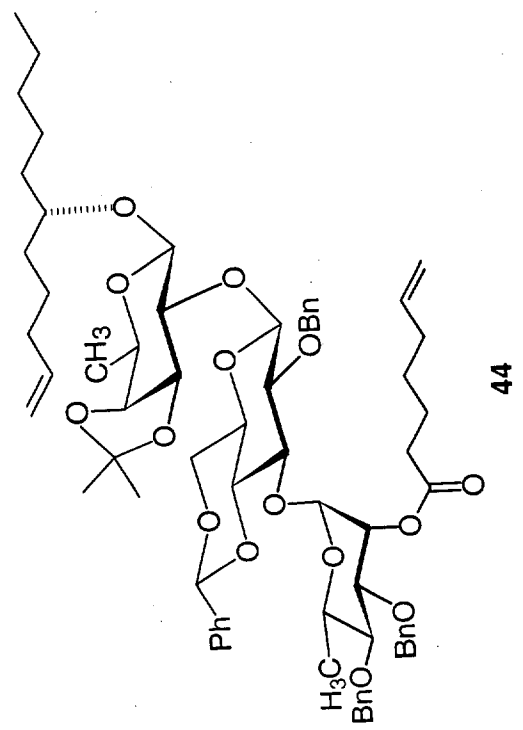
- 170.035
- 138.977
- 138.853
- 138.459
- 138.272
- 137.189
- 128.820
- 128.302
- 128.209
- 128.068
- 128.004
- 127.917
- 127.667
- 127.562
- 127.495
- 127.440
- 126.227
- 114.649
- 109.738
- 101.517
- 101.248
- 100.800
- 98.207
- 83.544
- 80.200
- 79.435
- 79.288
- 78.209
- 77.459
- 77.036
- 76.612
- 76.456
- 74.960
- 71.789
- 68.915
- 68.838
- 68.520
- 67.456
- 66.364
- 34.928
- 33.993
- 33.644
- 31.971
- 27.706
- 26.309
- 24.930
- 24.461
- 22.638
- 21.016
- 17.453
- 16.654
- 14.114



MLT-MB 068-01

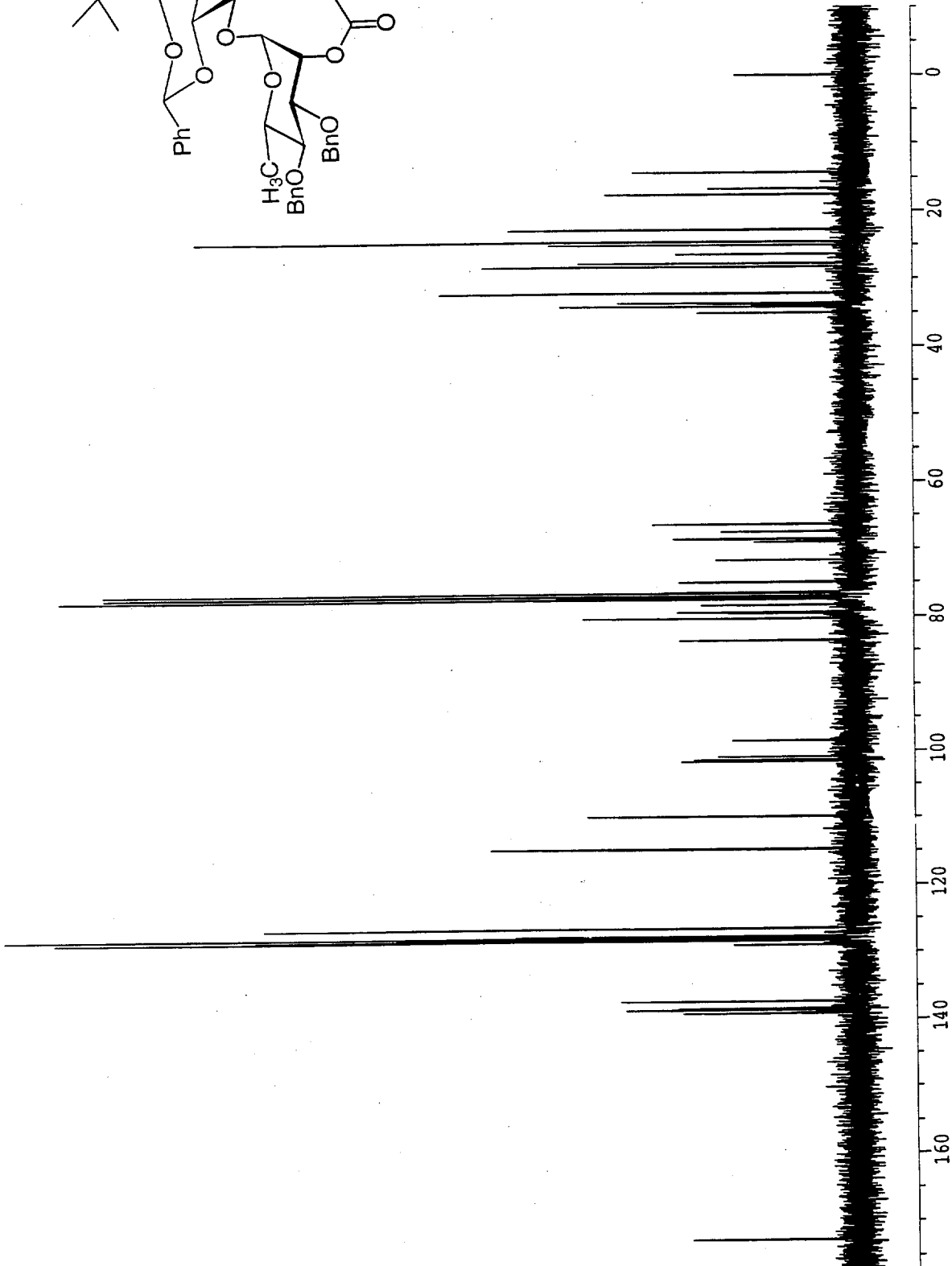
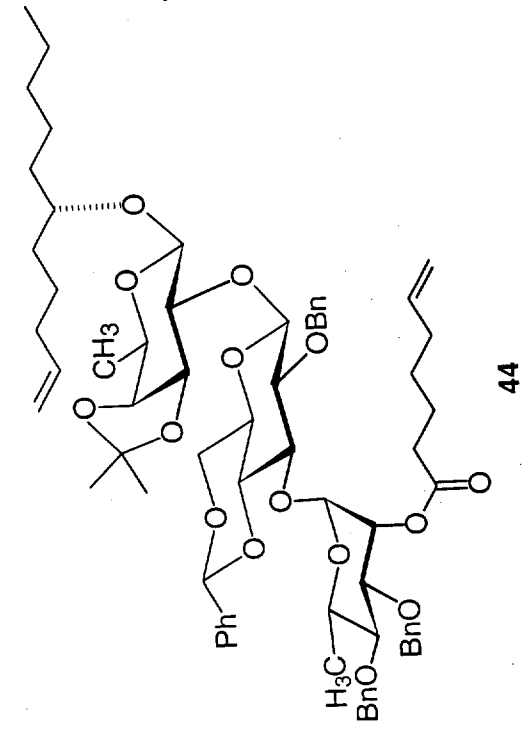
MLT-MB 074-01

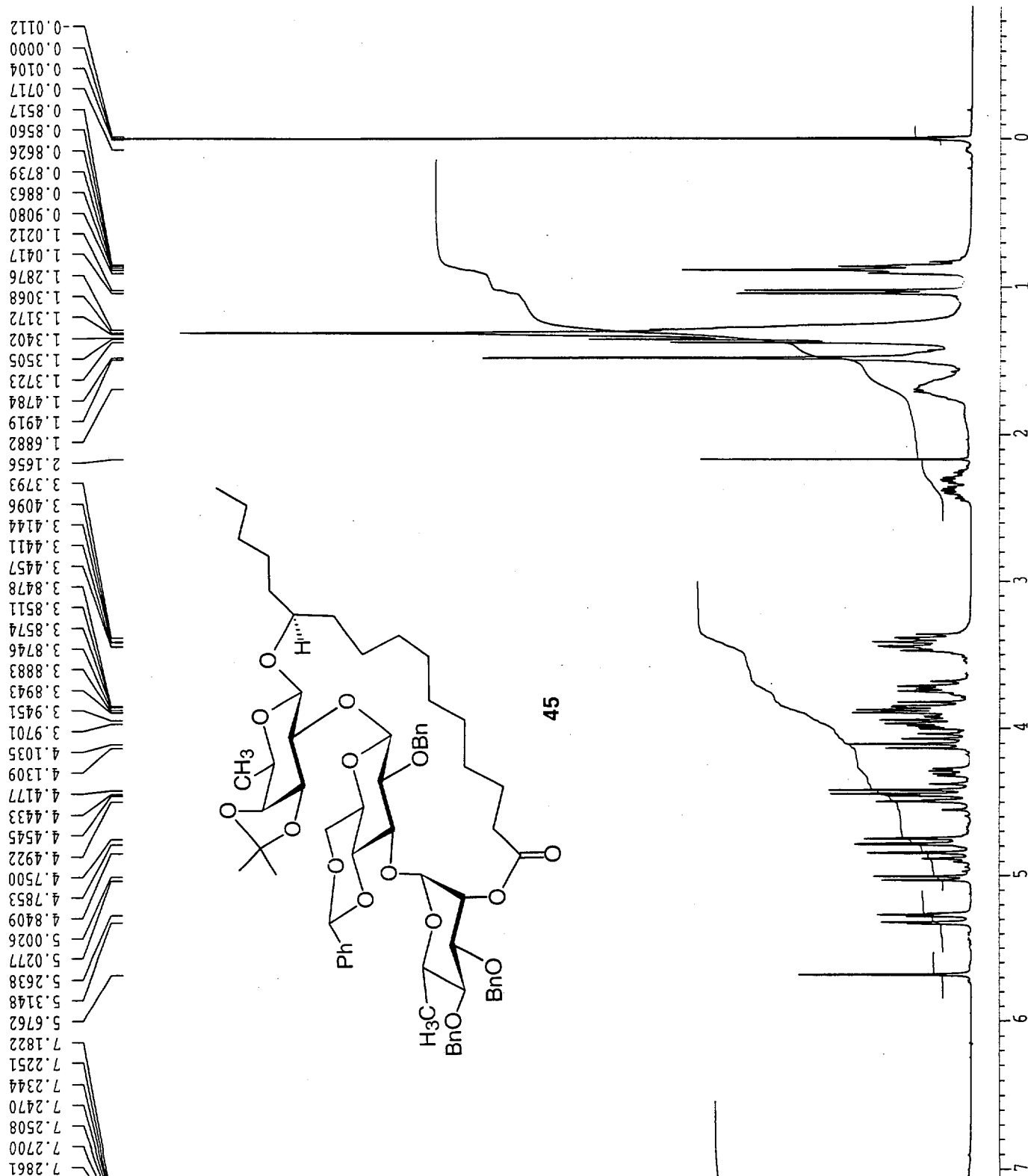
- 5.73646
- 5.71381
- 5.67958
- 5.50325
- 5.49113
- 5.14325
- 5.13867
- 5.0525
- 5.05292
- 5.00623
- 5.00302
- 4.99645
- 4.99049
- 4.98563
- 4.98084
- 4.95546
- 4.95207
- 4.94836
- 4.93813
- 4.93370
- 4.93047
- 4.90384
- 4.90012
- 4.89661
- 4.89271
- 4.83401
- 4.79727
- 4.72408
- 4.68760
- 4.52284
- 4.50205
- 4.48618
- 4.46569
- 4.24551
- 4.21965
- 4.06433
- 4.04359
- 3.94522
- 3.93721
- 3.93204
- 3.92575
- 3.91419
- 3.91008
- 3.90666
- 3.89530
- 3.84121
- 3.81633
- 3.79265
- 3.75384
- 3.50227
- 3.47136
- 3.45202
- 3.42527
- 3.39653
- 3.31912
- 3.28736



MLT-MB 074-01

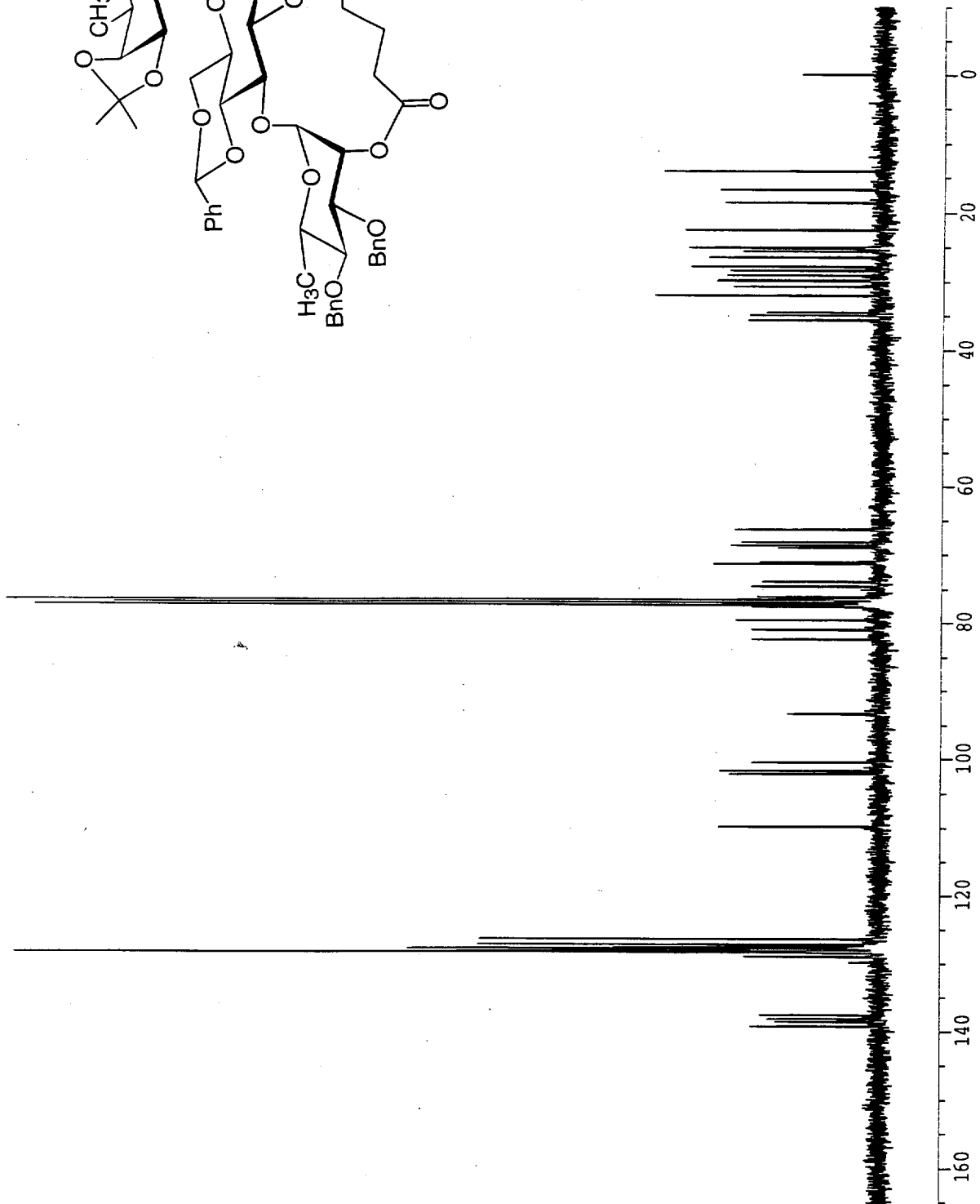
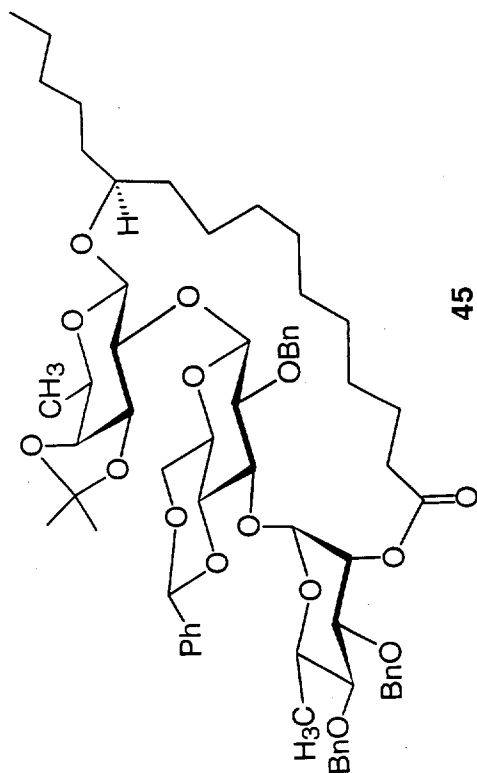
172.682
138.995
138.496
138.340
137.216
128.836
128.253
128.220
128.082
127.996
127.952
127.729
127.508
127.462
126.252
114.662
114.619
109.761
101.544
101.284
100.827
98.260
83.488
80.226
79.481
79.314
78.261
77.469
77.046
76.622
76.502
76.471
74.995
74.963
71.696
68.584
68.543
67.466
66.387
34.947
34.069
34.010
33.665
33.417
31.992
28.197
27.717
26.321
24.952
24.480
22.660
17.491
16.672
14.135





MLT-MB 089-01

173.808
139.157
138.471
138.031
137.527
128.941
128.287
128.247
128.142
127.816
127.710
127.582
127.302
127.158
126.310
109.693
102.030
101.622
100.447
82.418
81.070
80.992
79.566
77.724
77.453
77.029
76.603
76.485
76.142
74.566
73.884
71.389
71.177
68.640
68.213
66.236
35.584
34.884
34.492
31.991
30.729
29.865
29.730
29.069
28.364
27.830
26.444
25.605
25.222
25.072
22.605
18.550
16.728
14.092



Current Data Parameters
 NAME ok9021
 EXPNO 10
 PROCNO 1
 DU mpi
 USER mltna

F2 - Acquisition Parameters

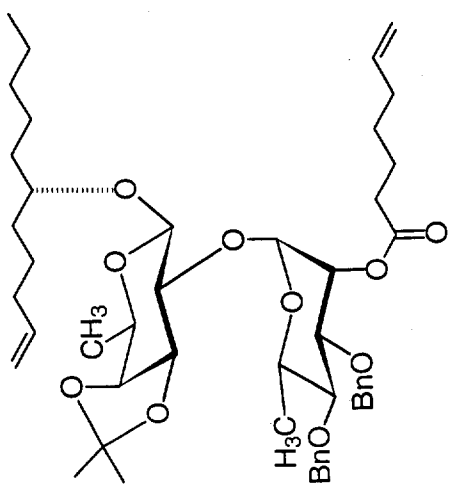
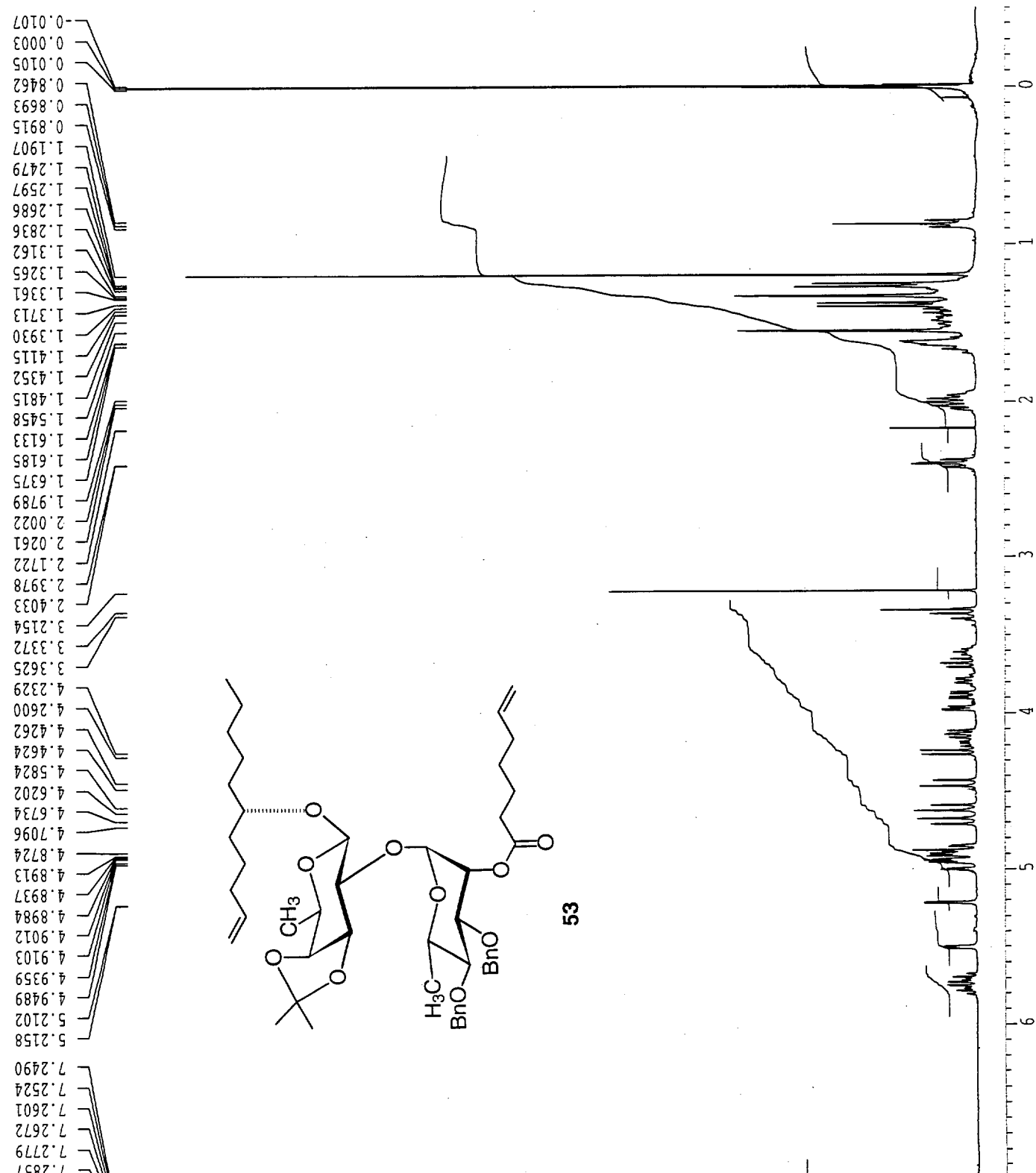
Date_ 981009
 Time 22.47
 INSTRUM dpx300
 PROBDH 5 mm QNP
 PULPROG zg30
 TD 32768
 SOLVENT CDC13
 NS 32
 DS 2
 SWH 6172.839 Hz
 FIDRES 0.188380 Hz
 AQ 2.6542580 sec
 RG 287.4
 DW 81.000 usec
 DE 4.50 usec
 TE 300.0 K
 HL1 90 dB
 D1 1.0000000 sec
 P1 7.30 usec
 DE 4.50 usec
 SFO1 300.1318534 MHz
 NUCLEUS off

F2 - Processing parameters

SI 16384
 SF 300.1300064 MHz
 WDW no
 SSB 0
 LB 0.00 Hz
 GB 0
 PC 2.00

1D NMR plot parameters

CX 22.00 cm
 F1P 7.500 ppm
 F1 2250.98 Hz
 F2P -0.500 ppm
 F2 -150.07 Hz
 PPMCM 0.36364 ppm/cm
 HZCM 109.13818 Hz/cm



MLT-MB 156-01

0.00001
0.86158
0.88503
0.90678
1.25101
1.26939
1.29556
1.31753
1.32003
1.34463
1.36644
1.38567
1.42971
1.44824
1.62784
1.65702
1.67887
2.15813
2.33566
2.50893
3.40690
3.43842
3.46994
3.51733
3.53966
3.96300
3.96957
3.98232
3.98903
4.05375
4.07428
4.09492
4.10101
4.11144
4.34203
4.36502
4.54467
4.57525
4.58211
4.61085
4.70013
4.73767
4.89399
4.92989
4.94766
4.95332
5.57609
5.58409
5.59258
7.24563
7.27474
7.27920
7.28592
7.29997
7.30691

F2 - Acquisition Parameters

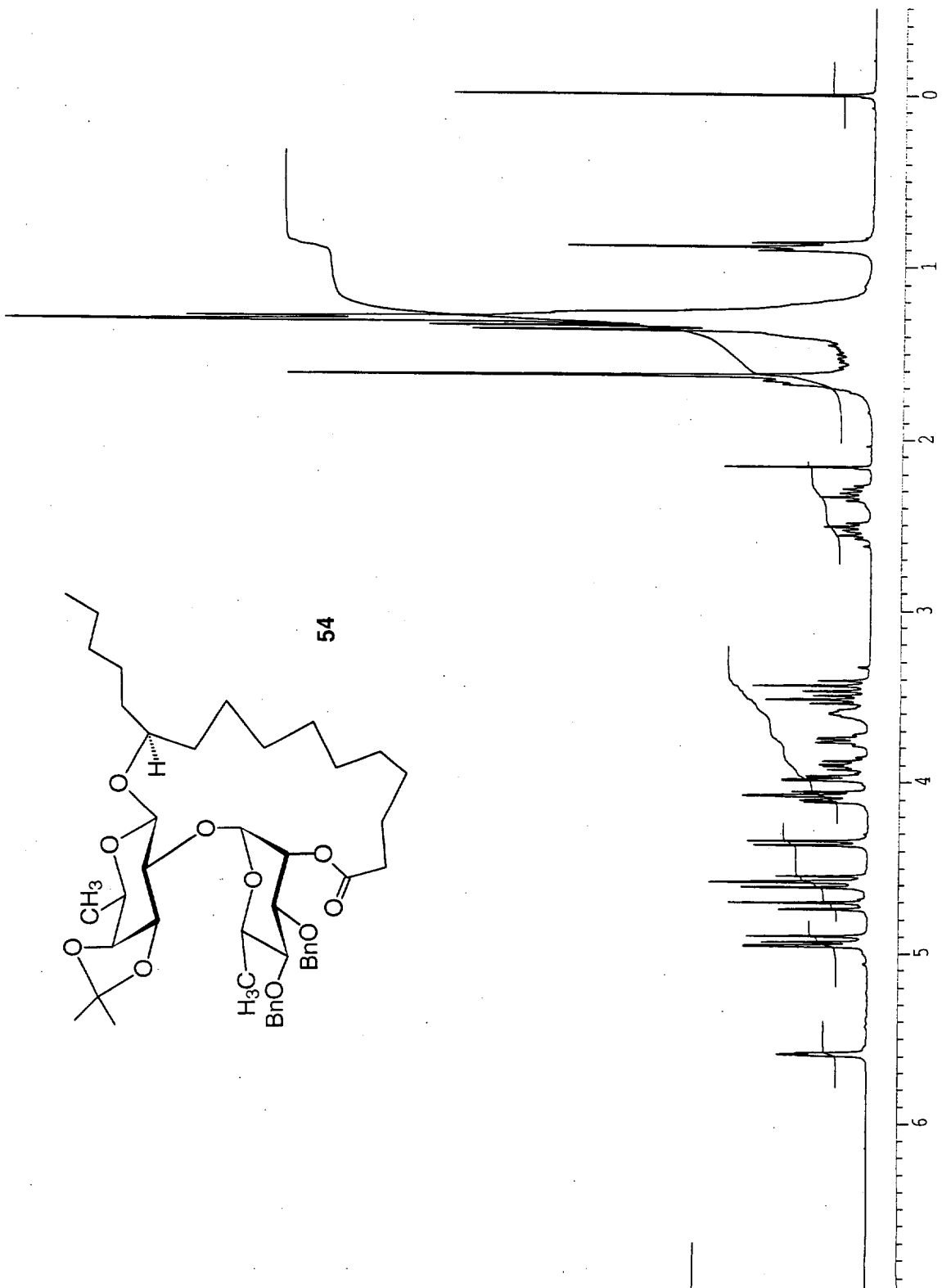
Date_ 981015
Time 10.26
INSTRUM dpx300
PROBHD 5 mm QNP
PULPROG zg30
TD 32768
SOLVENT CDCl3
NS 32
DS 2
SWH 6172.839 Hz
FIDRES 0.188380 Hz
AQ 2.6542580 sec
RG 50.8
DW 81.000 usec
DE 4.50 usec
TE 300.0 K
HL1 90 dB
D1 1.0000000 sec
F1 7.30 usec
DE 4.50 usec
SF01 300.1318534 MHz
NUCLEUS off

F2 - Processing parameters

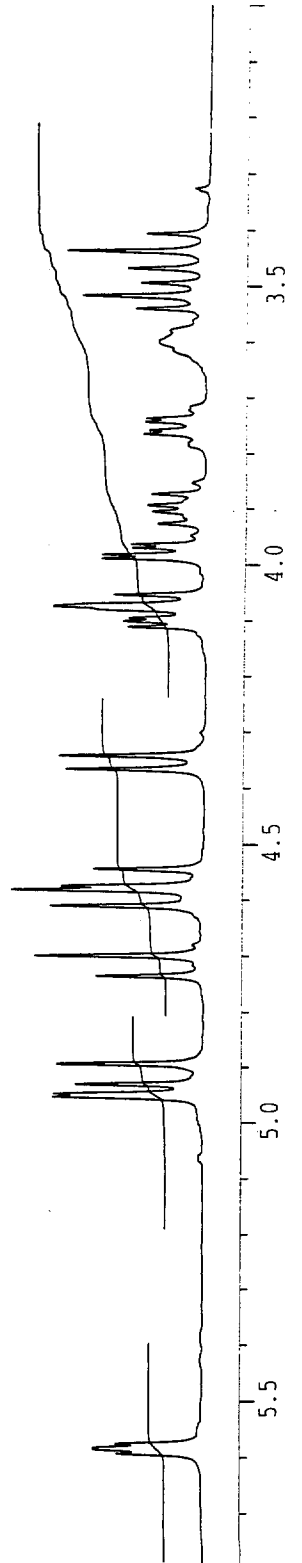
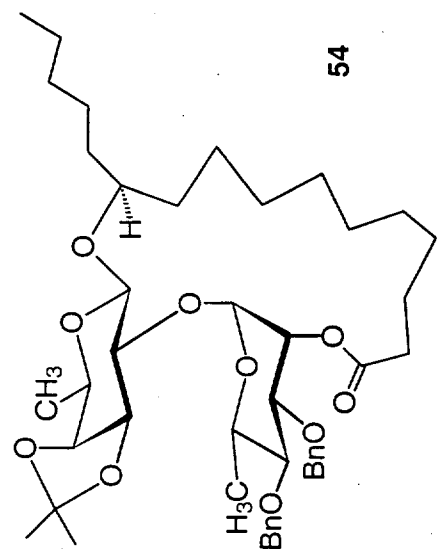
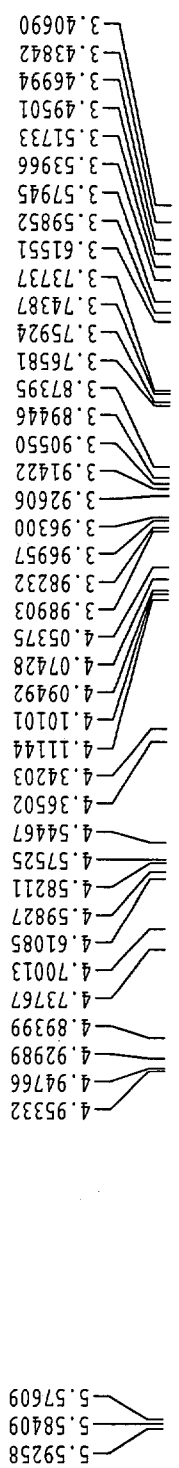
SI 16384
SF 300.1300106 MHz
WDW EM
SSB 0
LB 0.30 Hz
GB 0
PC 2.00

1D NMR plot parameters

CX 22.00 cm
F1P 7.500 ppm
F1 2250.98 Hz
F2P -0.500 ppm
F2 -150.07 Hz
PPMCM 0.36364 ppm/cm
HZCM 109.13818 Hz/cm



MLT-MB-161-01

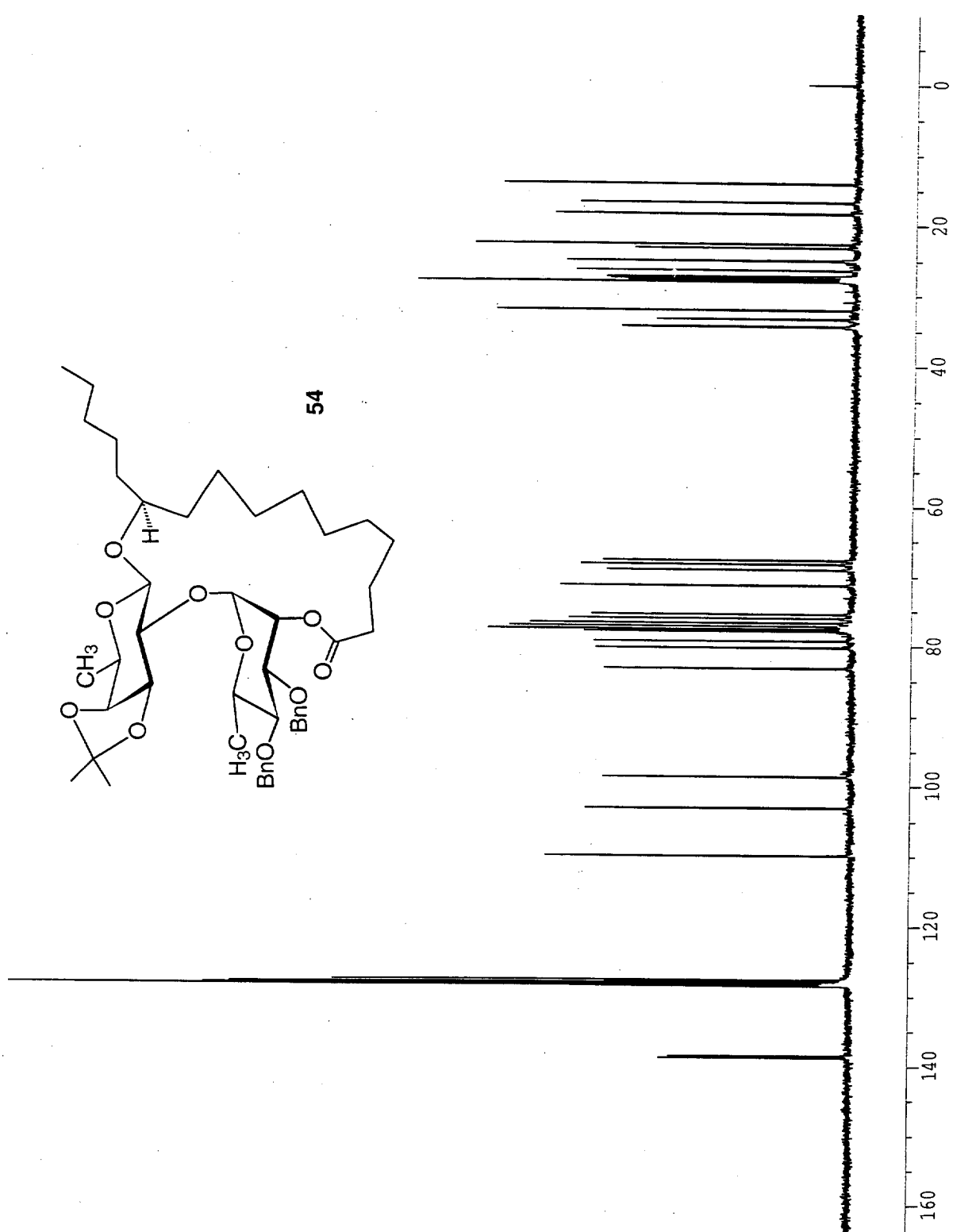


EXPNO 11
 PROCNO 1
 DU mp1
 USER mltna

F2 - Acquisition Parameters
 Date_ 981015
 Time 10.59
 INSTRUM dpx300
 PROBD 5 mm QNP
 PULPROG zgpg30
 TD 65536
 SOLVENT CDCl3
 NS 1200
 DS 2
 SWH 21231.422 Hz
 FIDRES 0.323966 Hz
 AQ 1.5434228 sec
 RG 16384
 DW 23.550 usec
 DE 4.50 usec
 TE 300.0 K
 D1 0.03000000 sec
 CPDPRG waltz16
 P31 80.00 usec
 S2 83 dB
 HL1 90 dB
 D1 0.03000000 sec
 P1 6.60 usec
 DE 4.50 usec
 SF01 75.4760670 MHz
 NUCLEUS off

F2 - Processing parameters
 SI 32768
 SF 75.4677502 MHz
 WDW EM
 SSB 0
 LB 1.00 Hz
 GB 0
 PC 1.40

1D NMR plot parameters
 CX 22.00 cm
 F1P 180.000 ppm
 F1 13584.20 Hz
 F2P -10.000 ppm
 F2 -754.68 Hz
 PPMCM 8.63636 ppm/cm
 HZCM 651.76691 Hz/cm



MLT-MB-161-01

Current Data Parameters
 NAME ok28015
 EXPNO 10
 PROCNO 1
 DU mpi
 USER mltna

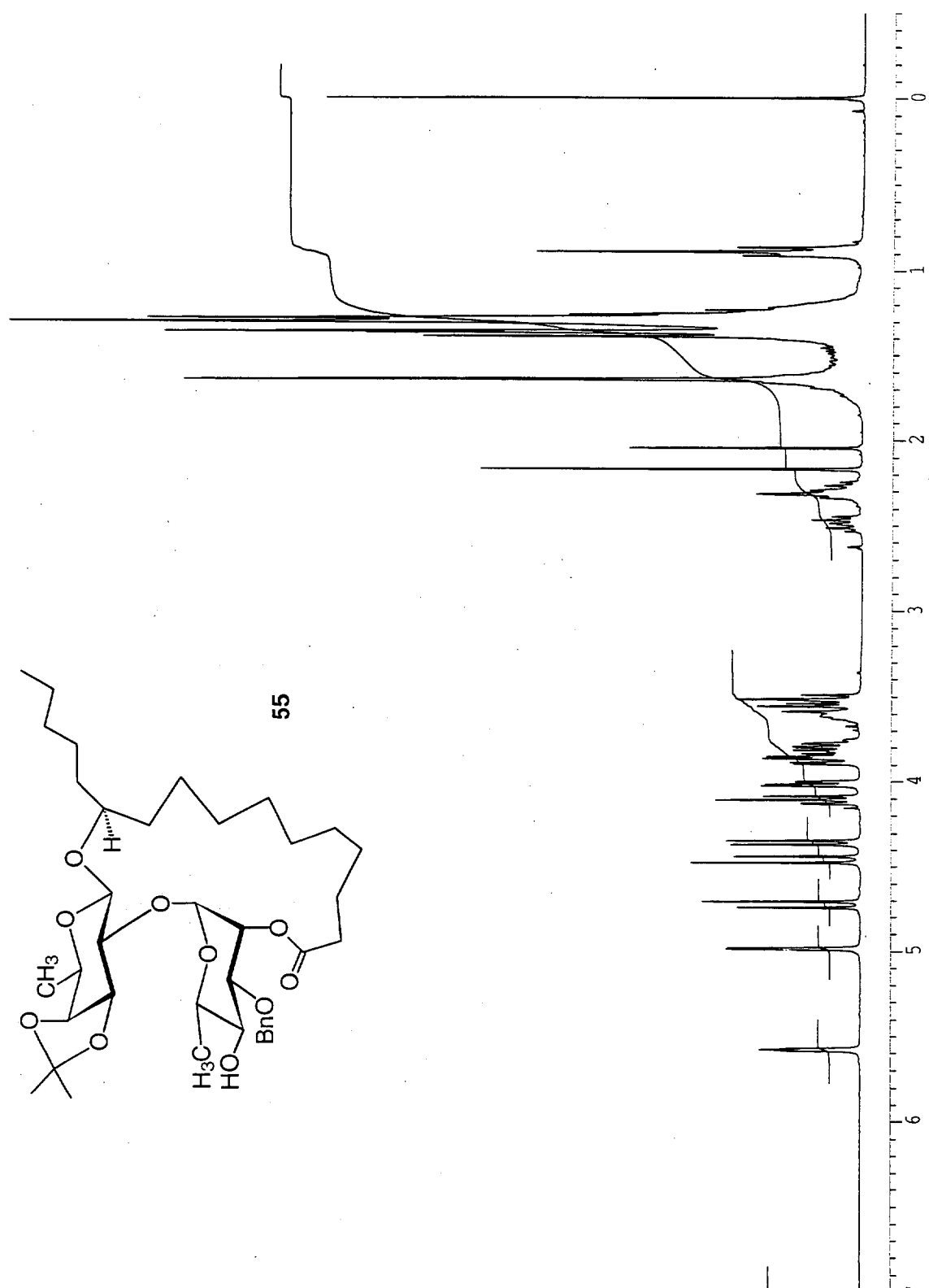
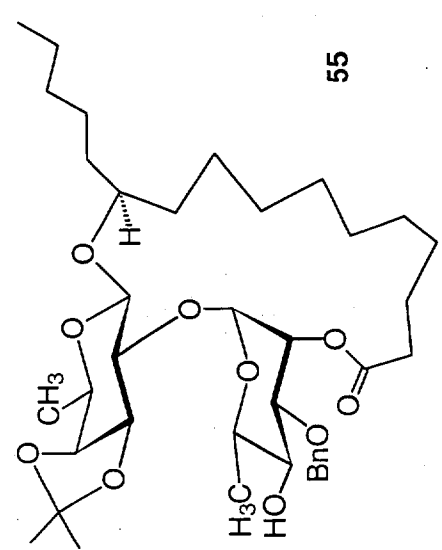
F2 - Acquisition Parameters

Date_ 981028
 Time 16.39
 INSTRUM dpx300
 PROBHD 5 mm QNP
 PULPROG zg30
 TD 32768
 SOLVENT CDCl3
 NS 32
 DS 2
 SWH 6172.839 Hz
 FIDRES 0.188380 Hz
 AQ 2.6542580 sec
 RG 64
 DW 81.000 usec
 DE 4.50 usec
 TE 300.0 K
 HL1 90 dB
 D1 1.00000000 sec
 P1 7.30 usec
 DE 4.50 usec
 SF01 300.1318534 MHz
 NUCLEUS off

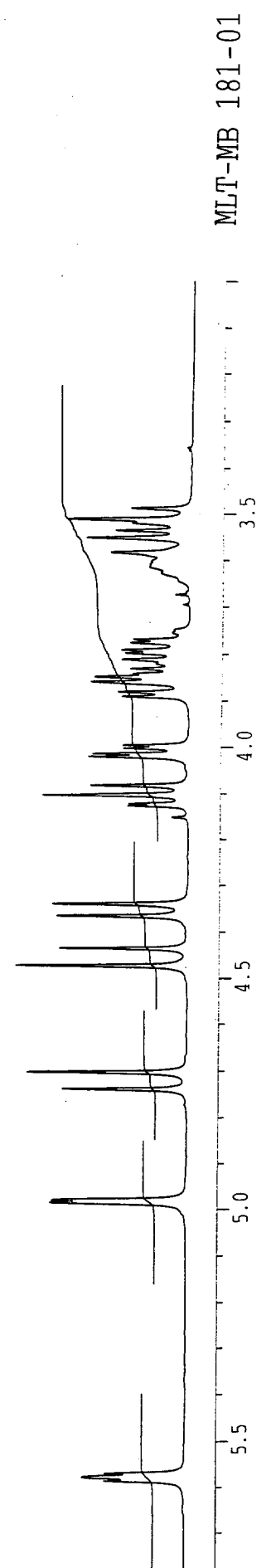
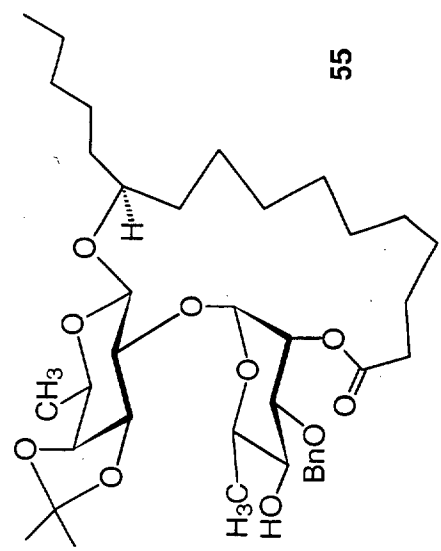
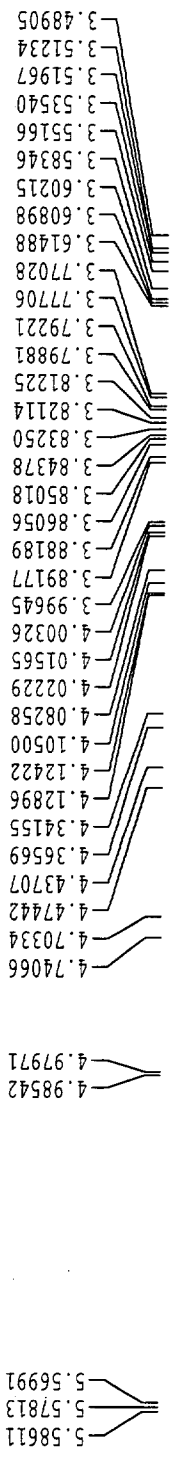
F2 - Processing parameters
 SI 16384
 SF 300.1300042 MHz
 WDW EM
 SSB 0
 LB 0.30 Hz
 GB 0
 PC 2.00

ID NMR plot parameters
 CX 22.00 cm
 F1P 7.500 ppm
 F1 2250.98 Hz
 F2P -0.500 ppm
 F2 -150.07 Hz
 PPMCM 0.36364 ppm/cm
 HZCM 109.13818 Hz/cm

0.00000
 0.86546
 0.88892
 0.91093
 1.21713
 1.23179
 1.25155
 1.25560
 1.27711
 1.29745
 1.35602
 1.36554
 1.38741
 1.63982
 1.65880
 1.68932
 2.04014
 2.16509
 2.29308
 2.31419
 2.46252
 3.48905
 3.51234
 3.53540
 3.55166
 3.58346
 3.79221
 3.79881
 3.81225
 3.85018
 3.86056
 3.88189
 3.89177
 3.99645
 4.00326
 4.01565
 4.02229
 4.08258
 4.10500
 4.34155
 4.36569
 4.43707
 4.47442
 4.70334
 4.74066
 4.97971
 4.98542
 5.56991
 5.57813
 5.58611
 7.26700
 7.30472
 7.31260
 7.31607
 7.33642

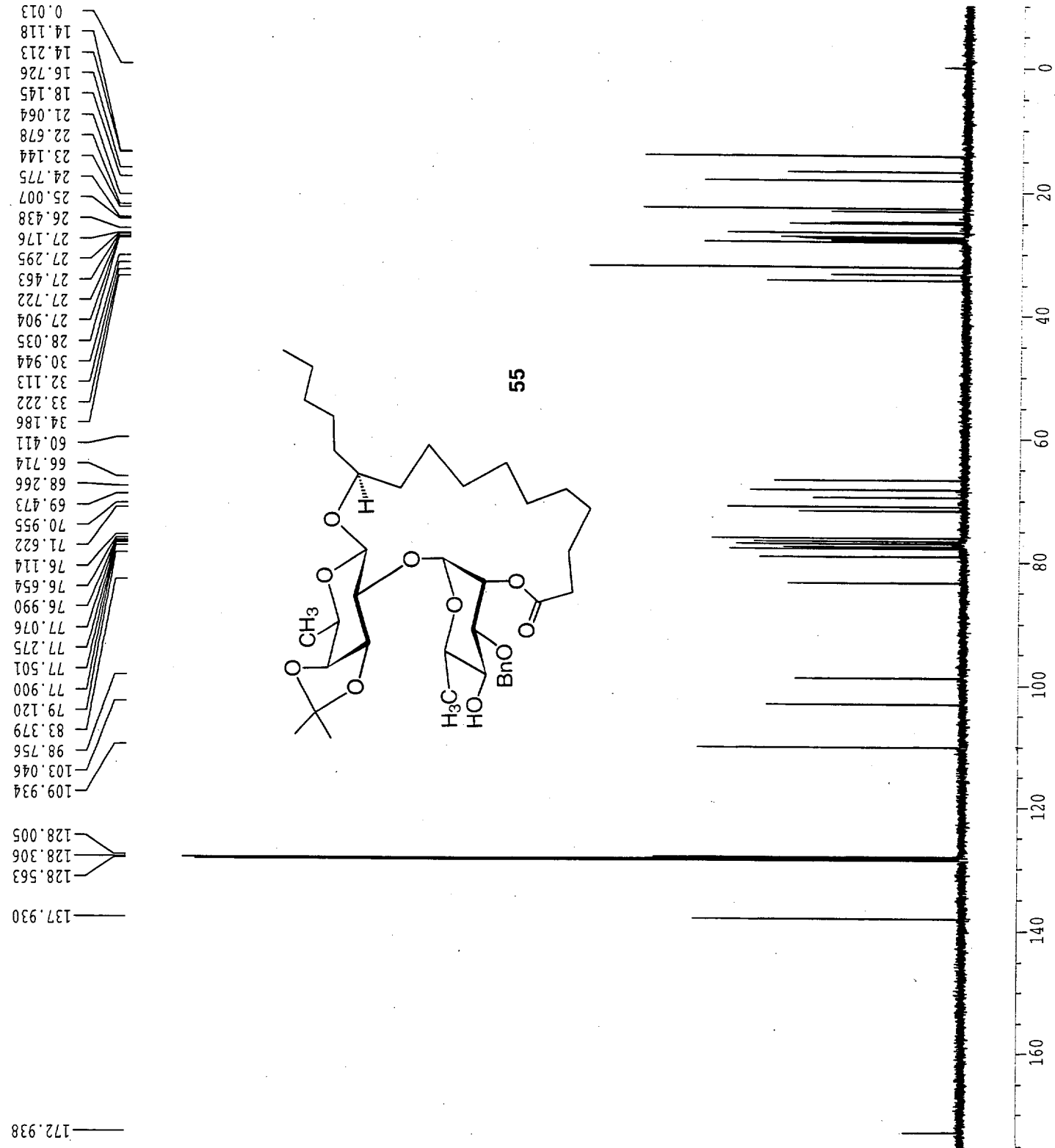


MLT-MB 181-01



MLT-MB 181-01

MLT-MB 181-01



EXPNO 11
 PROCNO 1
 DU mpi
 USER mltna

F2 - Acquisition Parameters

Date_ 981028
 Time 17.12
 INSTRUM dpx300
 PROBHD 5 mm QNP
 PULPROG zgpg30
 TD 65536
 SOLVENT CDCl3
 NS 1200
 DS 2
 SWH 21231.422 Hz
 FIDRES 0.323966 Hz
 AQ 1.5434228 sec
 RG 16384
 DW 23.550 usec
 DE 4.50 usec
 TE 300.0 K
 D1 0.03000000 sec
 CPDPRG waltz16
 P31 80.00 usec
 S2 83 dB
 HL1 90 dB
 D1 0.03000000 sec
 P1 6.60 usec
 DE 4.50 usec
 SF01 75.4760670 MHz
 NUCLEUS off

F2 - Processing parameters

SI 32768
 SF 75.4677480 MHz
 WDW no
 SSB 0
 LB 0.00 Hz
 GB 0
 PC 1.40

1D NMR plot parameters

CX 22.00 cm
 F1P 190.000 ppm
 F1 14338.87 Hz
 F2P -10.000 ppm
 F2 -754.68 Hz
 PPMCM 9.09091 ppm/cm
 HZCM 686.07043 Hz/cm

172.938
 137.930
 128.563
 128.306
 128.005
 109.934
 103.046
 98.756
 83.379
 79.120
 77.900
 77.501
 77.275
 77.076
 76.990
 76.654
 76.114
 71.622
 70.955
 69.473
 68.266
 66.714
 60.411
 34.186
 33.222
 32.113
 30.944
 28.035
 27.904
 27.722
 27.463
 27.295
 27.176
 26.438
 25.007
 24.775
 23.144
 22.678
 21.064
 18.145
 16.726
 14.213
 14.118
 0.013

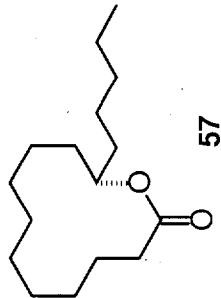
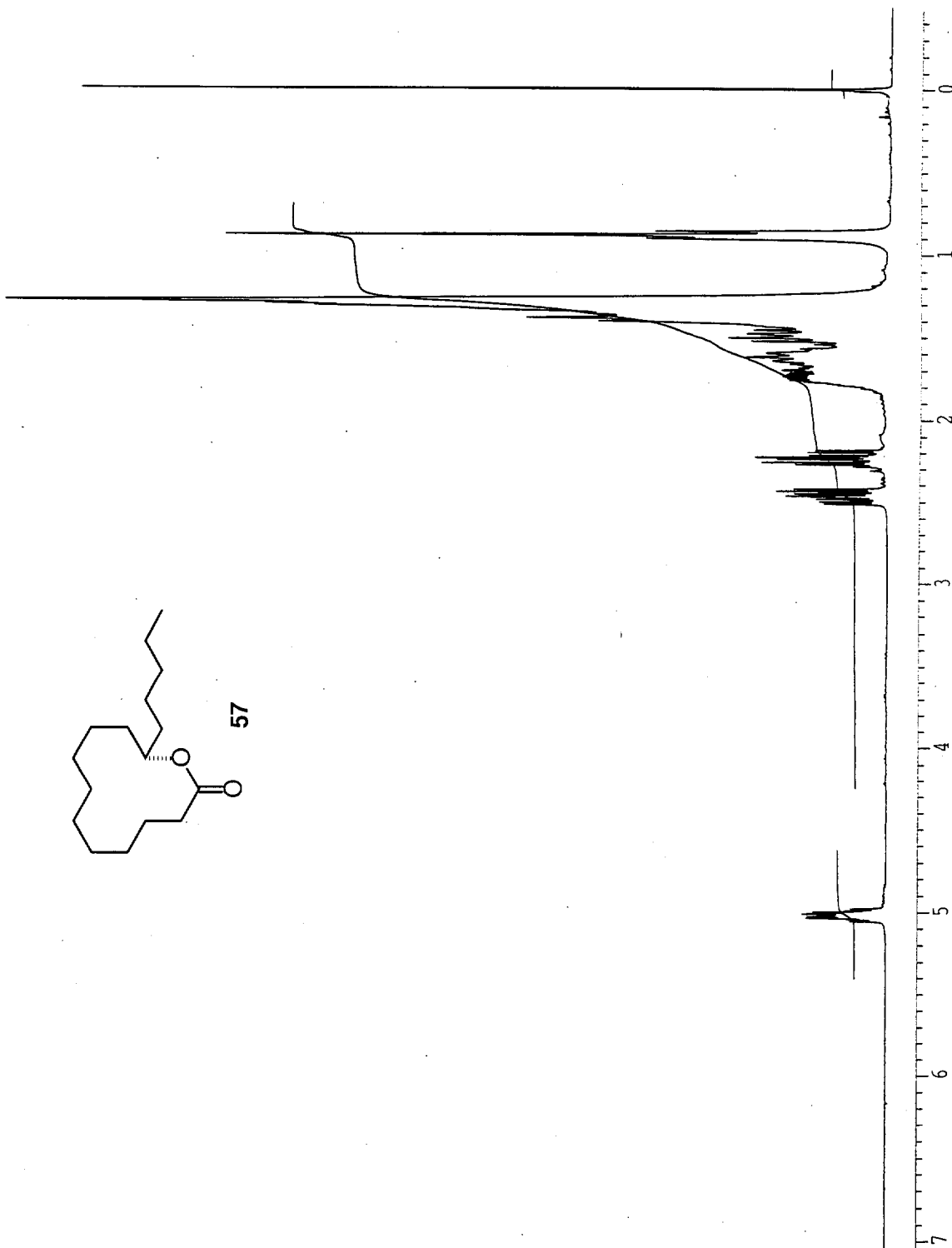
0.0000
0.0704
0.8573
0.8799
0.9019
1.2800
1.2954
1.3001
1.3068
1.3256
1.3544
1.3693
1.3789
1.3892
1.4007
1.4542
1.4750
1.4806
1.5006
1.5215
1.5931
1.6188
1.6394
1.7303
2.2249
2.2379
2.2559
2.4352
2.4628
4.9739
4.9848
4.9936
4.9999
5.0045
5.0112
5.0192
5.0239
5.0300
5.0386
5.0497

Current Data Parameters
NAME no11022
EXPNO 10
PROCNO 1
DU mpi
USER mltna

F2 - Acquisition Parameters
Date_ 981112
Time 0.05
INSTRUM dpx300
PROBHD 5 mm QNP
PULPROG zg30
TD 32768
SOLVENT CDCl3
NS 32
DS 2
SWH 6172.839 Hz
FIDRES 0.188380 Hz
AQ 2.6542580 sec
RG 101.6
DW 81.000 usec
DE 4.50 usec
TE 300.0 K
HL1 90 dB
D1 1.0000000 sec
P1 7.30 usec
DE 4.50 usec
SF01 300.1318534 MHz
NUCLEUS off

F2 - Processing parameters
SI 16384
SF 300.1300036 MHz
WDW EM
SSB 0
LB 0.30 Hz
GB 0
PC 2.00

1D NMR plot parameters
CX 22.00 cm
FIP 8.000 ppm
F1 2401.04 Hz
F2P -0.500 ppm
F2 -150.07 Hz
PPMCM 0.38636 ppm/cm
HZCM 115.95932 Hz/cm



MLT-MB 188-01

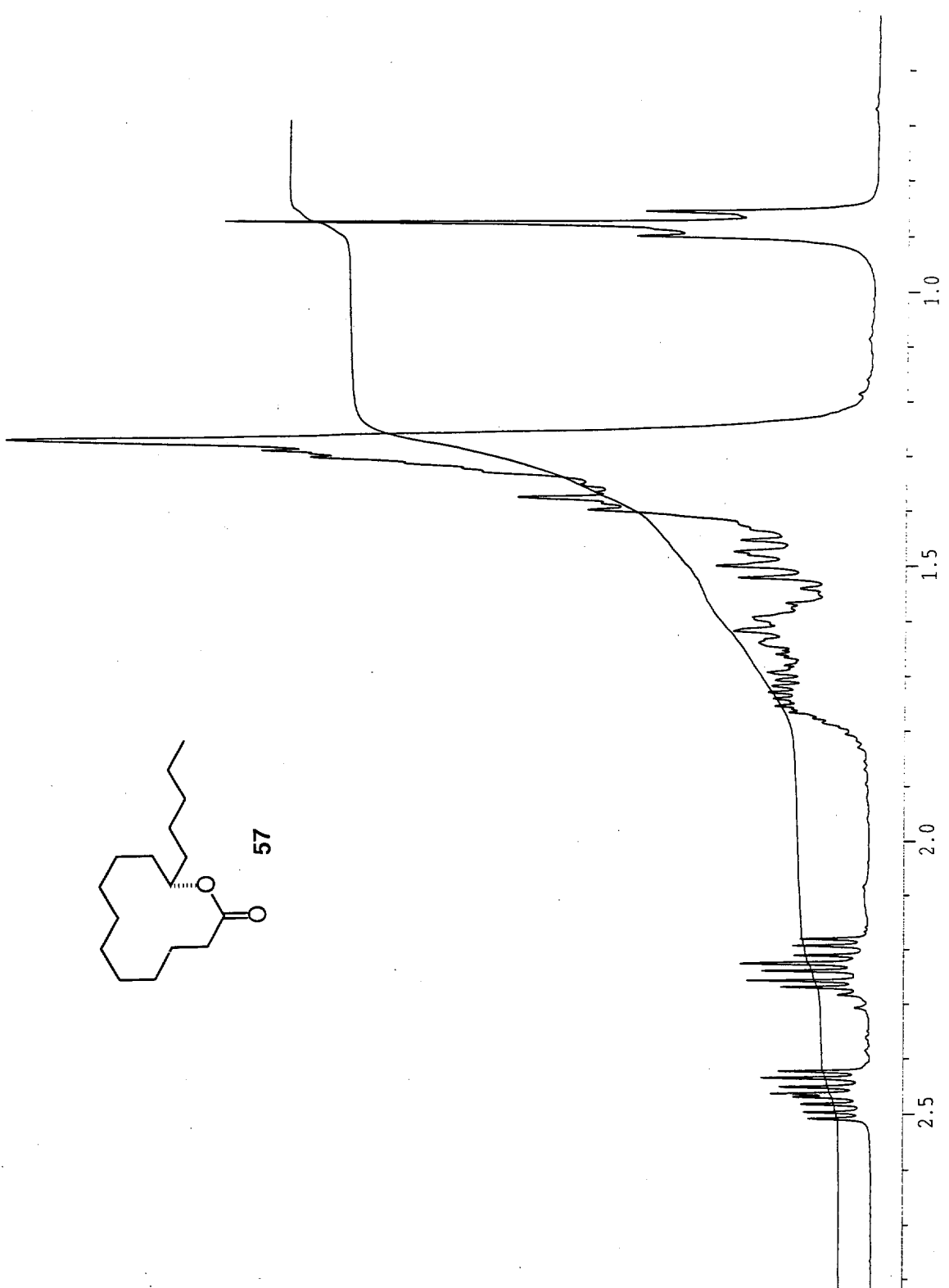
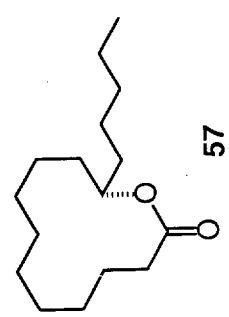
Current Data Parameters
 NAME no11022
 EXPNO 10
 PROCNO 1
 DU mpi
 USER mltna

F2 - Acquisition Parameters
 Date_ 981112
 Time 0.05
 INSTRUM dpx300
 PROBHD 5 mm QNP
 PULPROG zg30
 TD 32768
 SOLVENT CDCl3
 NS 32
 DS 2
 SWH 6172.839 Hz
 FIDRES 0.188380 Hz
 AQ 2.6542580 sec
 RG 101.6
 DW 81.000 usec
 DE 4.50 usec
 TE 300.0 K
 HL1 90 dB
 D1 1.0000000 sec
 P1 7.30 usec
 DE 4.50 usec
 SFO1 300.1318534 MHz
 NUCLEUS off

F2 - Processing parameters
 SI 16384
 SF 300.1300036 MHz
 WDW EM
 SSB 0
 LB 0.30 Hz
 GB 0
 PC 2.00

1D NMR plot parameters
 CX 22.00 cm
 FLP 3.000 ppm
 F1 900.39 Hz
 F2P 0.500 ppm
 F2 150.07 Hz
 PPMCM 0.11364 ppm/cm
 HZCM 34.10568 Hz/cm

2.50810
2.49582
2.48098
2.46858
2.46280
2.45063
2.43522
2.42311
2.30641
2.28176
2.26851
2.25591
2.23791
2.22493
2.21028
2.19276
2.17990
1.80583
1.75458
1.74200
1.73033
1.71862
1.70791
1.69355
1.68023
1.66542
1.65941
1.65295
1.63937
1.61882
1.59313
1.52148
1.50062
1.48060
1.47503
1.45418
1.40073
1.38922
1.37892
1.36929
1.35435
1.32563
1.30679
1.30015
1.29539
1.28005
0.90193
0.87993
0.85730



MLT-MB 188-01

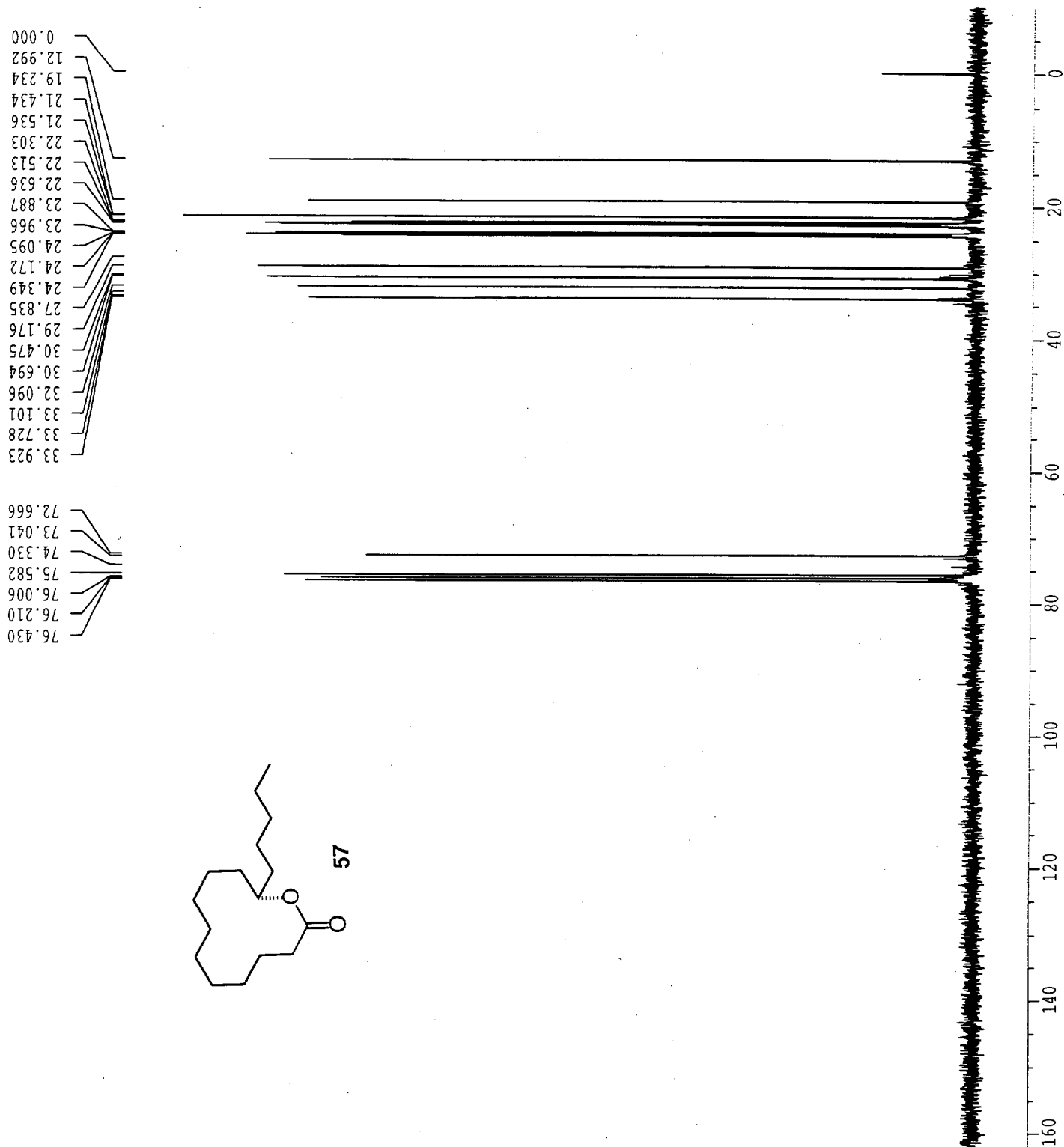
```

EXPNO 11
PROCNO 1
DU mpi
USER mlTma

F2 - Acquisition Parameters
Date_ 981112
Time 0.38
INSTRUM dpx300
PROBHD 5 mm QNP
PULPROG zgdc30
TD 65536
SOLVENT CDCl3
NS 1200
DS 2
SWH 21231.422 Hz
FIDRES 0.323966 Hz
AQ 1.5434228 sec
RG 16384
DM 23.550 usec
DE 4.50 usec
TE 300.0 K
D11 0.03000000 sec
CPDPRG waltz16
P31 80.00 usec
S2 83 dB
HL1 90 dB
DI 0.03000000 sec
F1 6.60 usec
DE 4.50 usec
SF01 75.4760670 MHz
NUCLEUS off

F2 - Processing parameters
SI 32768
SF 75.4678246 MHz
WDW EM
SSB 0
LB 1.00 Hz
GB 0
PC 1.40

ID NMR plot parameters
CX 22.00 cm
F1P 180.000 ppm
F1 13584.21 Hz
F2P -10.000 ppm
F2 -754.68 Hz
PPMCM 8.63636 ppm/cm
HZCM 651.76758 Hz/cm
    
```



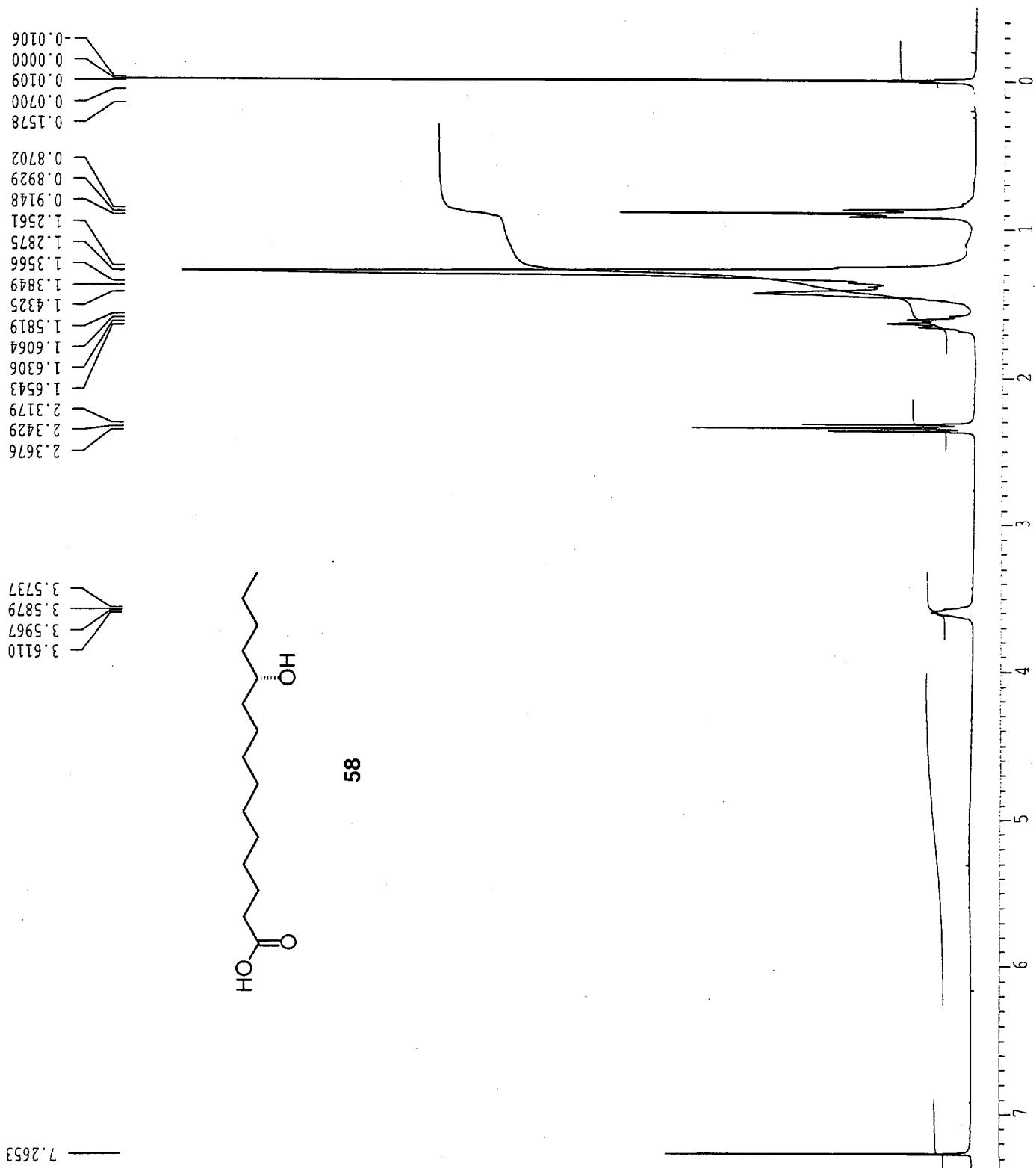
MLT-MB 188-01

Current Data Parameters
 NAME de15006
 EXPNO 10
 PROCNO 1
 DU mpi
 USER mltna

F2 - Acquisition Parameters
 Date_ 981215
 Time 12.22
 INSTRUM dpx300
 PROBHD 5 mm QNP
 PULPROG zg30
 TD 32768
 SOLVENT CDC13
 NS 32
 DS 2
 SMH 6172.839 Hz
 FIDRES 0.188380 Hz
 AQ 2.6542580 sec
 RG 228.1
 DW 81.000 usec
 DE 4.50 usec
 TE 300.0 K
 HL1 90 dB
 D1 1.00000000 sec
 F1 7.30 usec
 DE 4.50 usec
 SF01 300.1318534 MHz
 NUCLEUS off

F2 - Processing parameters
 SI 16384
 SF 300.1300047 MHz
 WDM EM
 SSB 0
 LB 0.30 Hz
 GB 0
 PC 2.00

1D NMR plot parameters
 CX 22.00 cm
 FIP 8.000 ppm
 F1 2401.04 Hz
 F2P -0.500 ppm
 F2 -150.07 Hz
 PPMCM 0.38636 ppm/cm
 HZCM 115.95932 Hz/cm



MLT-MB 190-04

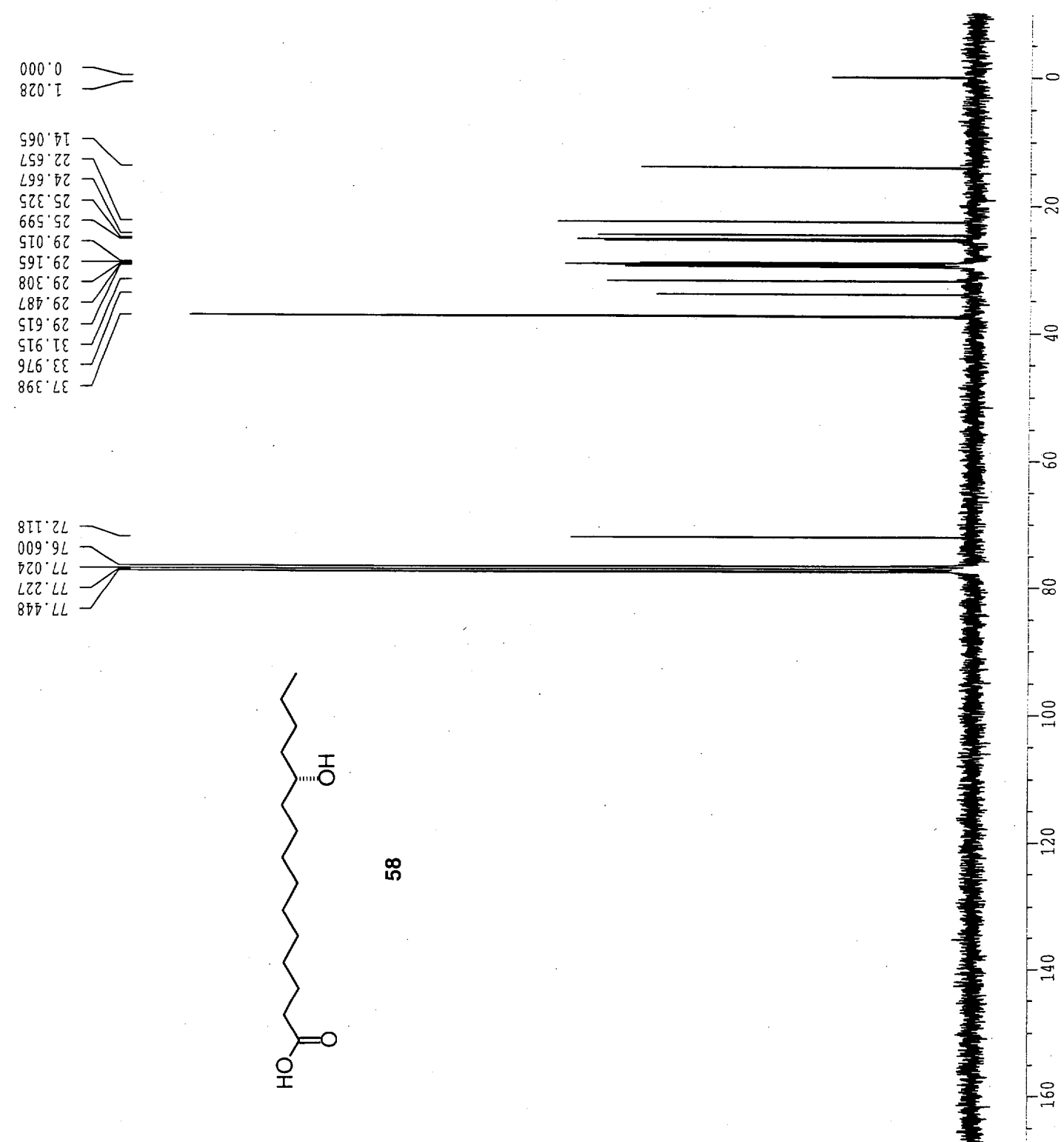
```

EXPNO      11
PROCNO     1
DU         mpi
USER       mltna

F2 - Acquisition Parameters
Date_      981215
Time       12.54
INSTRUM    dpx300
PROBHD     5 mm QNP
PULPROG    zgdc30
TD         65536
SOLVENT    CDCl3
NS         1200
DS         2
SWH        21231.422 Hz
FIDRES     0.323966 Hz
AQ         1.5434228 sec
RG         16384
DW         23.550 usec
DE         4.50 usec
TE         300.0 K
CPDPRG     waltz16
P1         80.00 usec
S2         83 dB
HL1        90 dB
D1         0.03000000 sec
P1         6.60 usec
DE         4.50 usec
SF01       75.4760670 MHz
NUCLEUS    off

F2 - Processing parameters
SI         32768
SF         75.4677477 MHz
WDW        EM
SSB        0
LB         1.00 Hz
GB         0
PC         1.40

ID NMR plot parameters
CX         22.00 cm
F1P        185.000 ppm
F1         13961.53 Hz
F2P        -10.000 ppm
F2         -754.68 Hz
PPMCM      8.86364 ppm/cm
HZCM       668.91870 Hz/cm
    
```



58