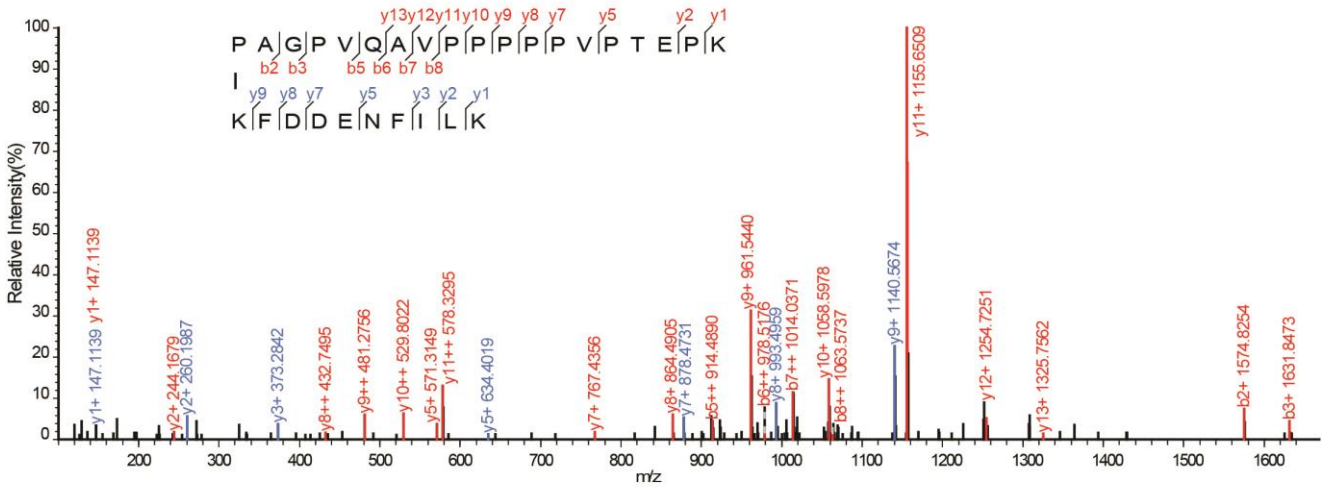
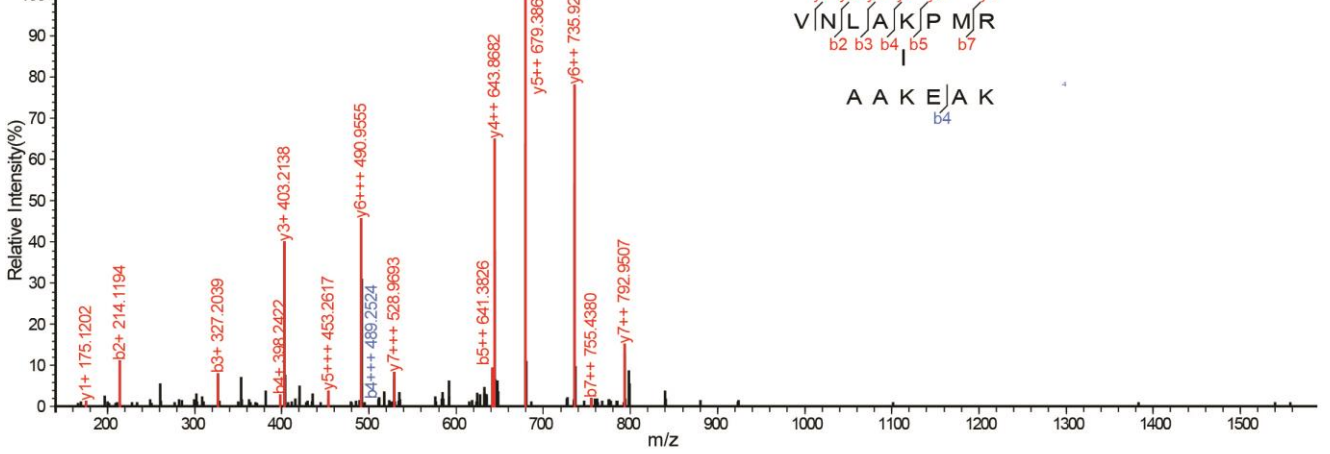


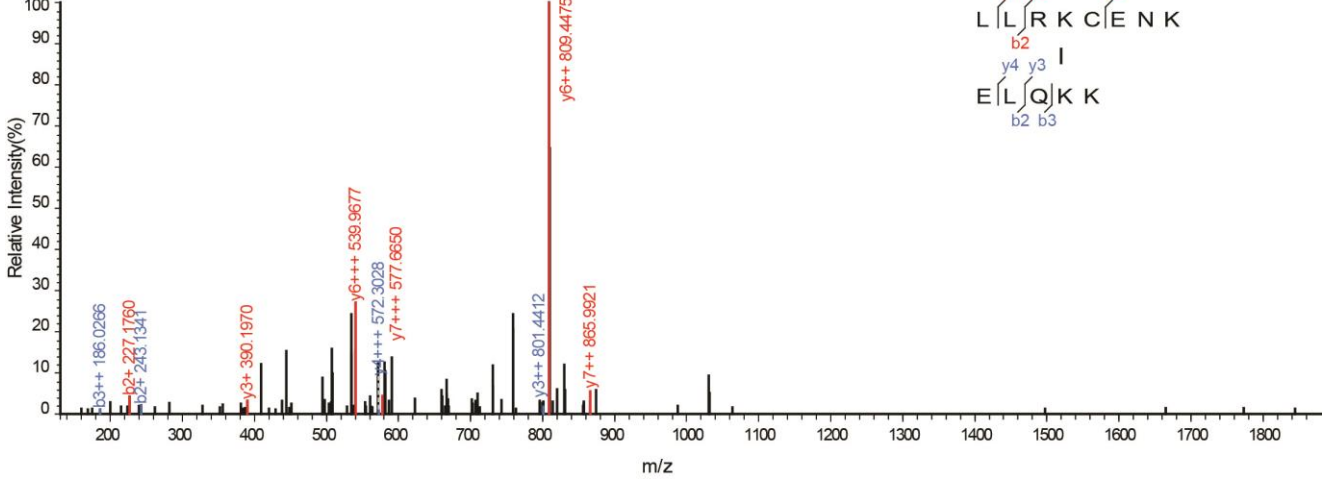
SF3a120 - Cyp-E

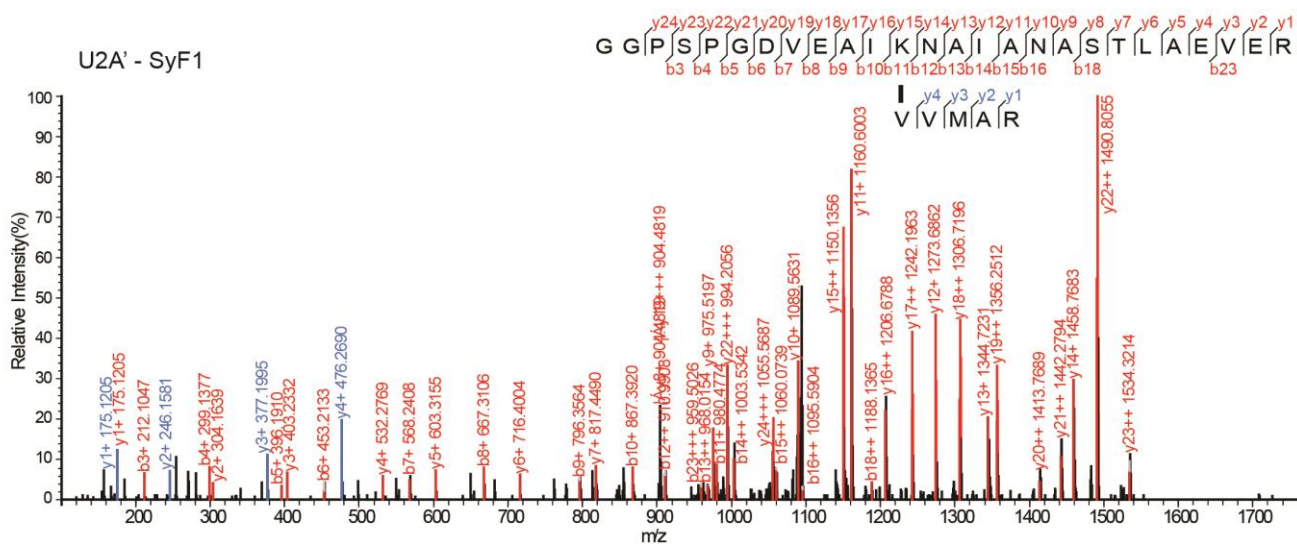
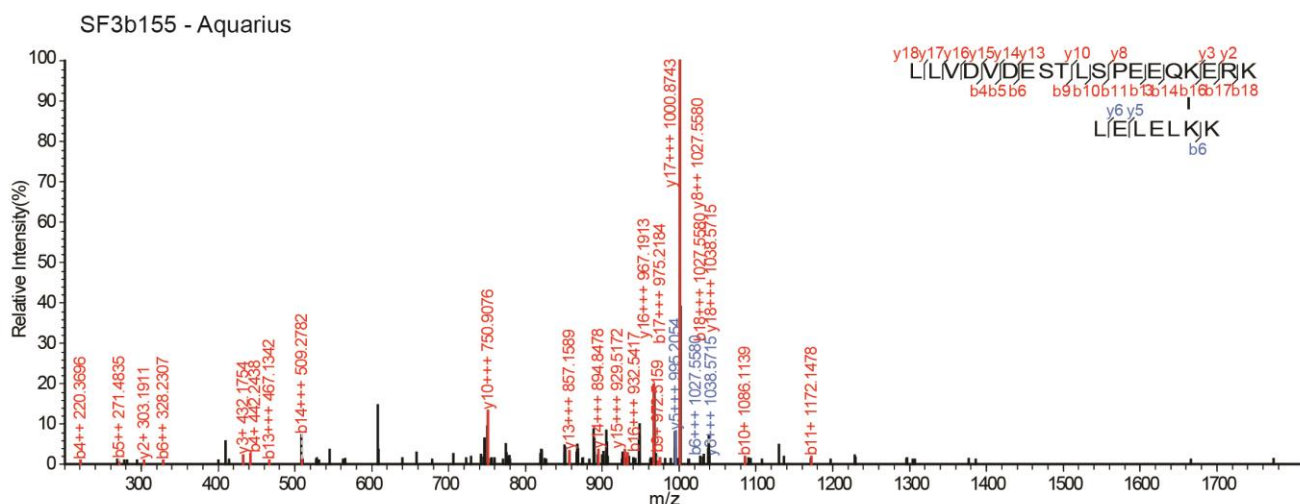
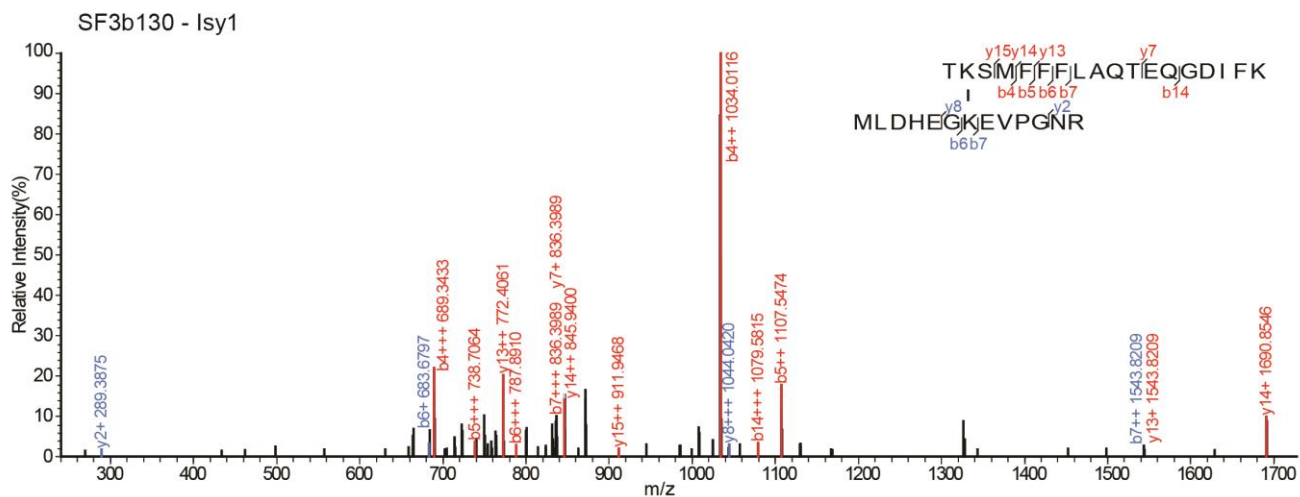


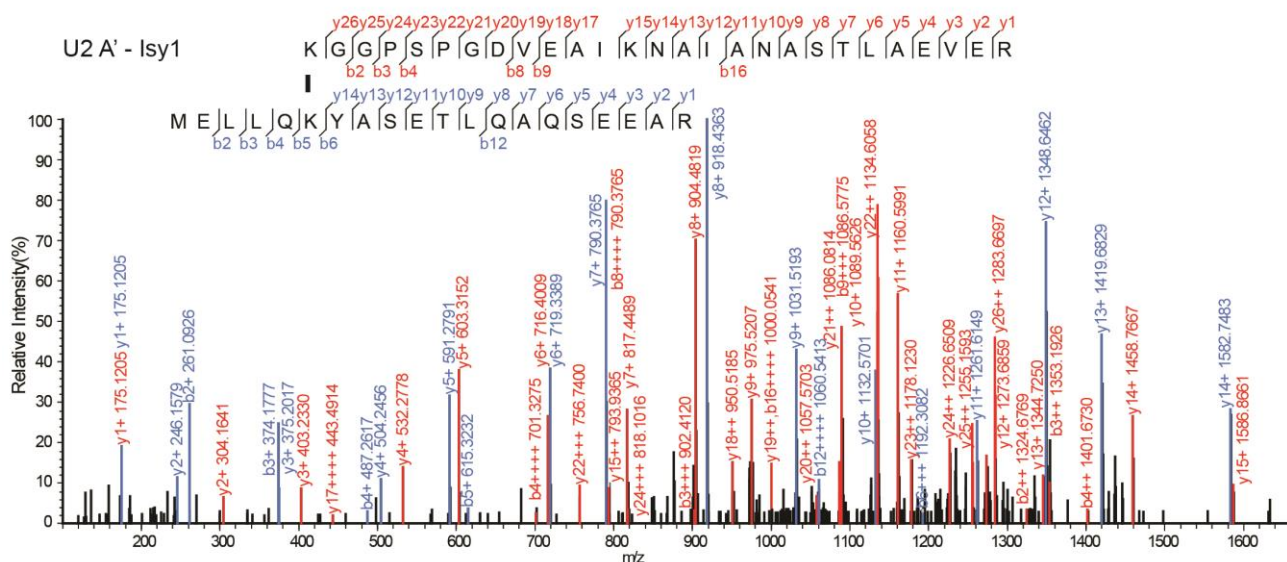
Cyp-E - SF3a66



SF3b130 - CCDC16







Data S1. IBC proteins are crosslinked to U2 snRNP proteins in the spliceosome. Related to Figure 1.

Interprotein crosslinking spectra showing interactions identified between the IBC and the human U2 snRNP within the human spliceosomal B^{act} complex, shown schematically in Figure 1F and listed in Supplemental Table S1. CID generated fragments corresponding to each of the cross-linked peptides are indicated by either red (first peptide) or blue (second peptide); b and y ions indicate fragmentation of the peptide bond conserving the charge at the N- or C- terminus, respectively.