

## Supporting Information

### Tuning Morphologies of Langmuir Polymer Films Through Controlled Relaxations of Non-Equilibrium States

Sivasurender Chandran, Stefanie Dold, Amaury Buvignier, Kai-Steffen Krannig, Helmut Schlaad, Günter Reiter and Renate Reiter

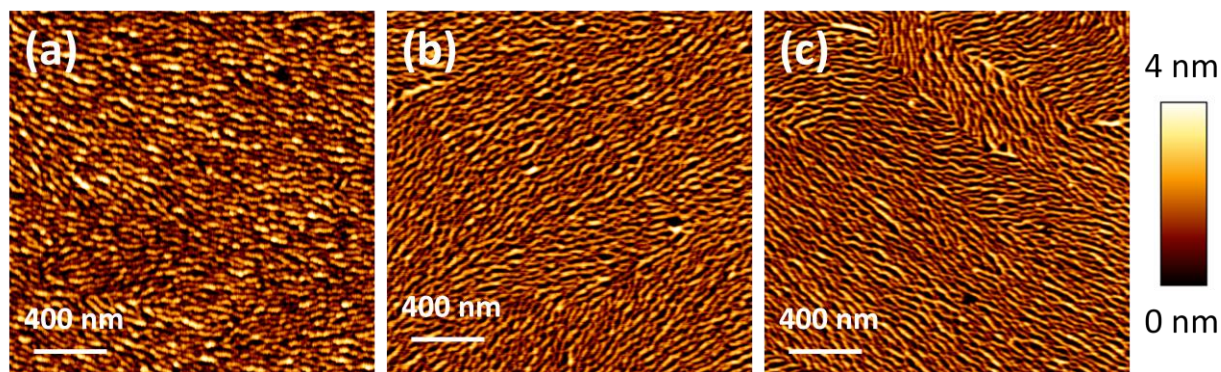


Figure S1: Morphologies of films obtained by compressing the film at 2 (a), 5 (b) and 10  $\text{cm}^2/\text{min}$  (c) are shown. All the films are transferred at  $18.5 \text{ \AA}^2$  per monomer.

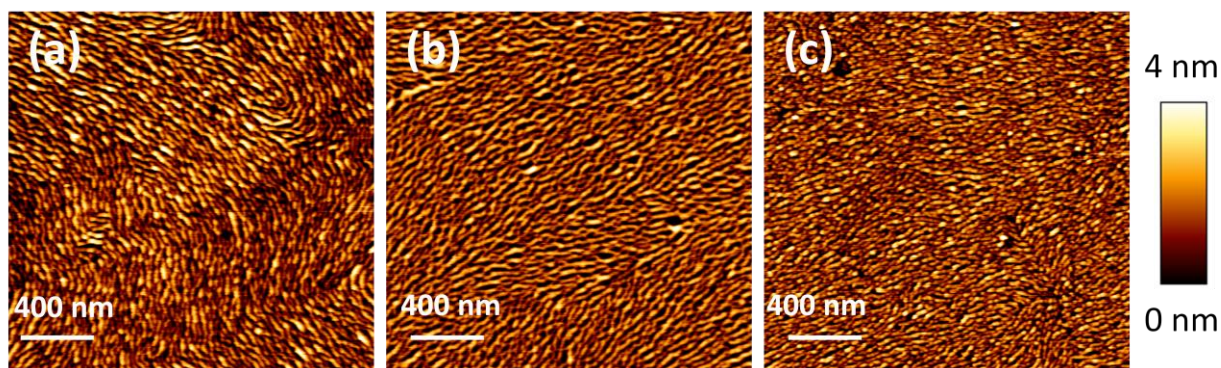


Figure S2: Morphologies of films transferred after different contact times with the film viz., 30 (a), 60 (b) and 120 s (c) is shown. All the films are transferred at  $18.5 \text{ \AA}^2$  per monomer.

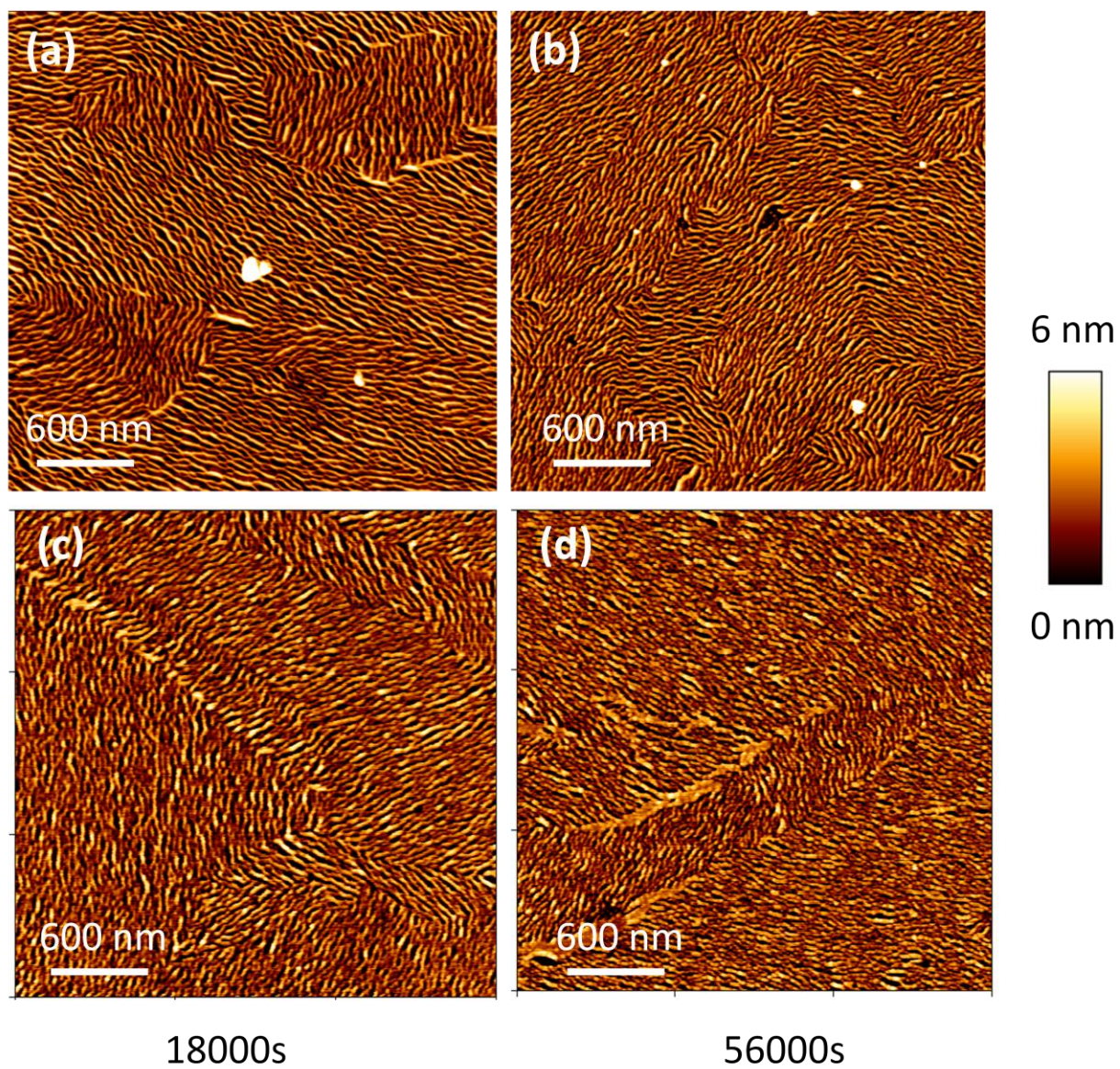


Figure S3: Morphology of the films transferred after a waiting time of (a) 1000 s (b) 10000 s (c) 18000 s and (d) 56000 s is shown. All the films were transferred at  $19.5 \text{ \AA}^2$  per monomer.

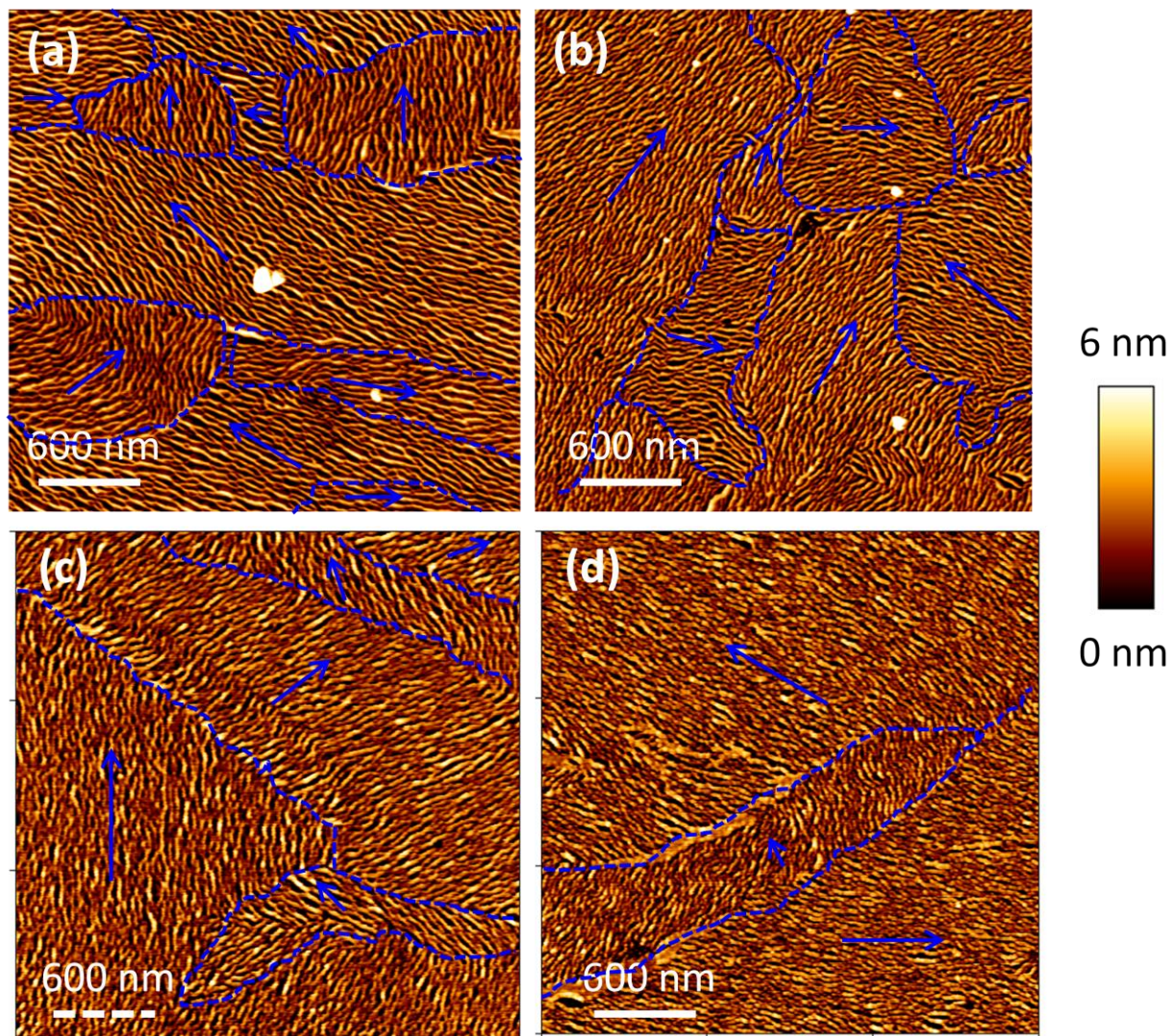


Figure S3a: A copy of Figure S3 is shown along with lines for marking the domain boundary. The dashed lines mark the domain boundaries and the arrow marks indicates the director of the orientation of the fibrils in the specified domains. With increasing waiting time two important observations could be made (a) decrease in the number of domains and (b) merging of fibrils at the domain boundaries at higher waiting times, as most visible in the morphologies of the films transferred after 18000 s (b) and 56000 s (d).

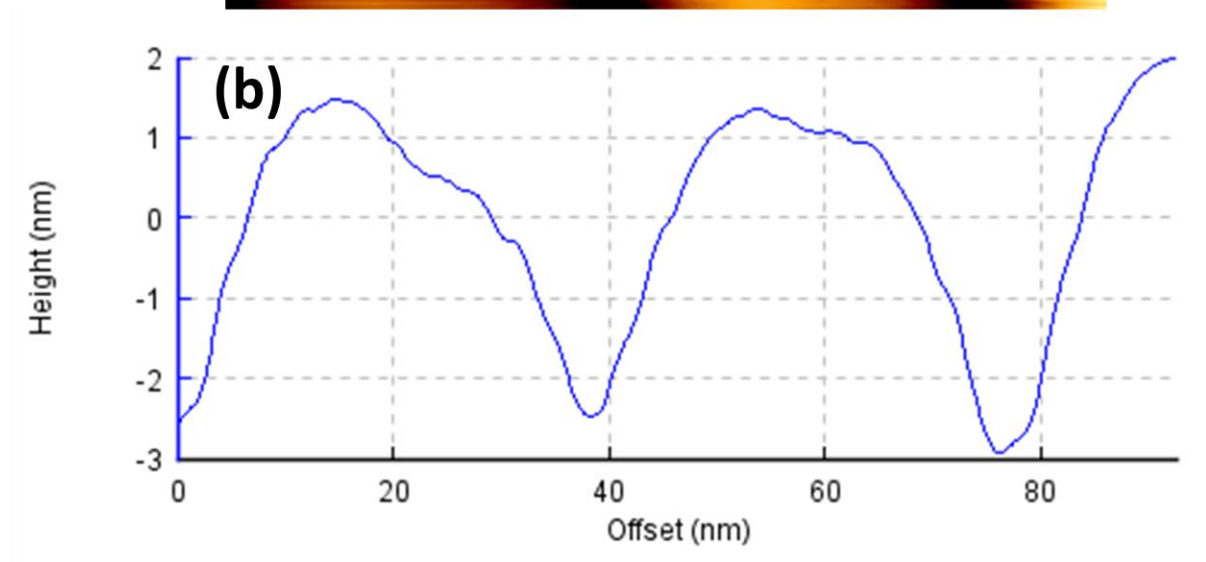
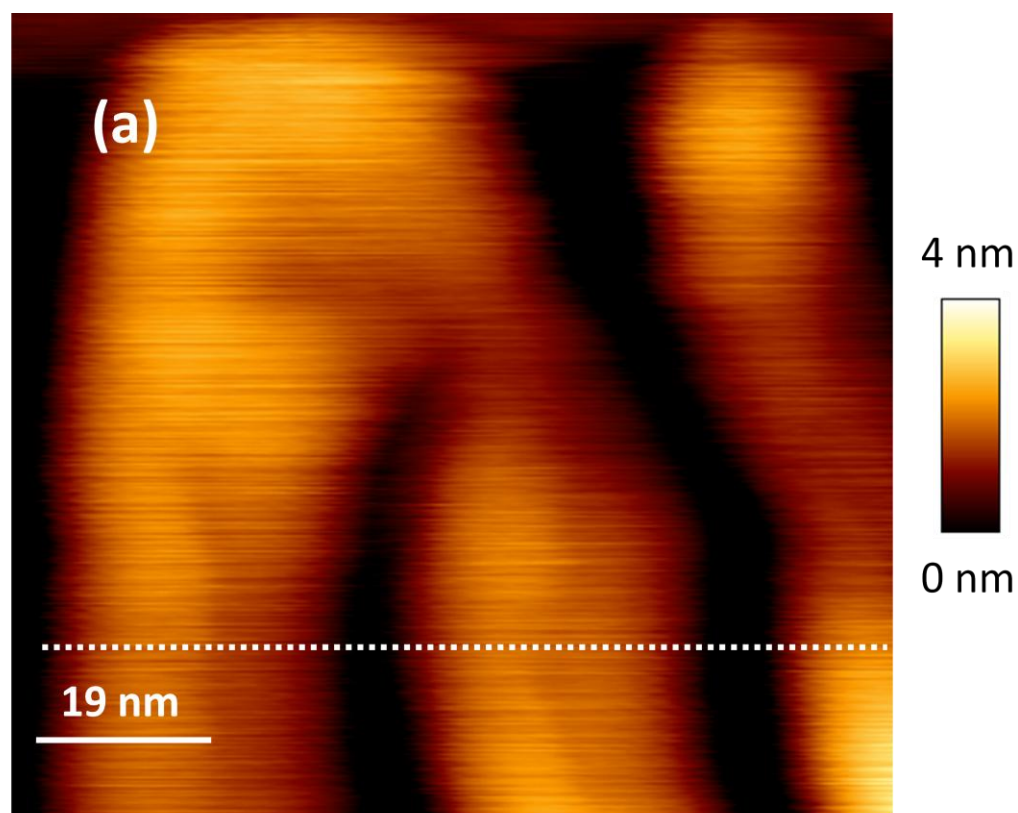


Figure S5: Morphology (a) of a representative sample transferred at  $18.5 \text{ \AA}^2$  per monomer is shown along with a height profile (b).