

**OPEN INNOVATION
IN SCIENCE**



Open Science Days
Dr. Lucia Malfent, Berlin, February 2016

www.openinnovationinscience.at



AN INITIATIVE OF THE
LUDWIG BOLTZMANN GESELLSCHAFT

TELL US!
Citizen Science in Mental Health Research

LUDWIG BOLTZMANN GESELLSCHAFT

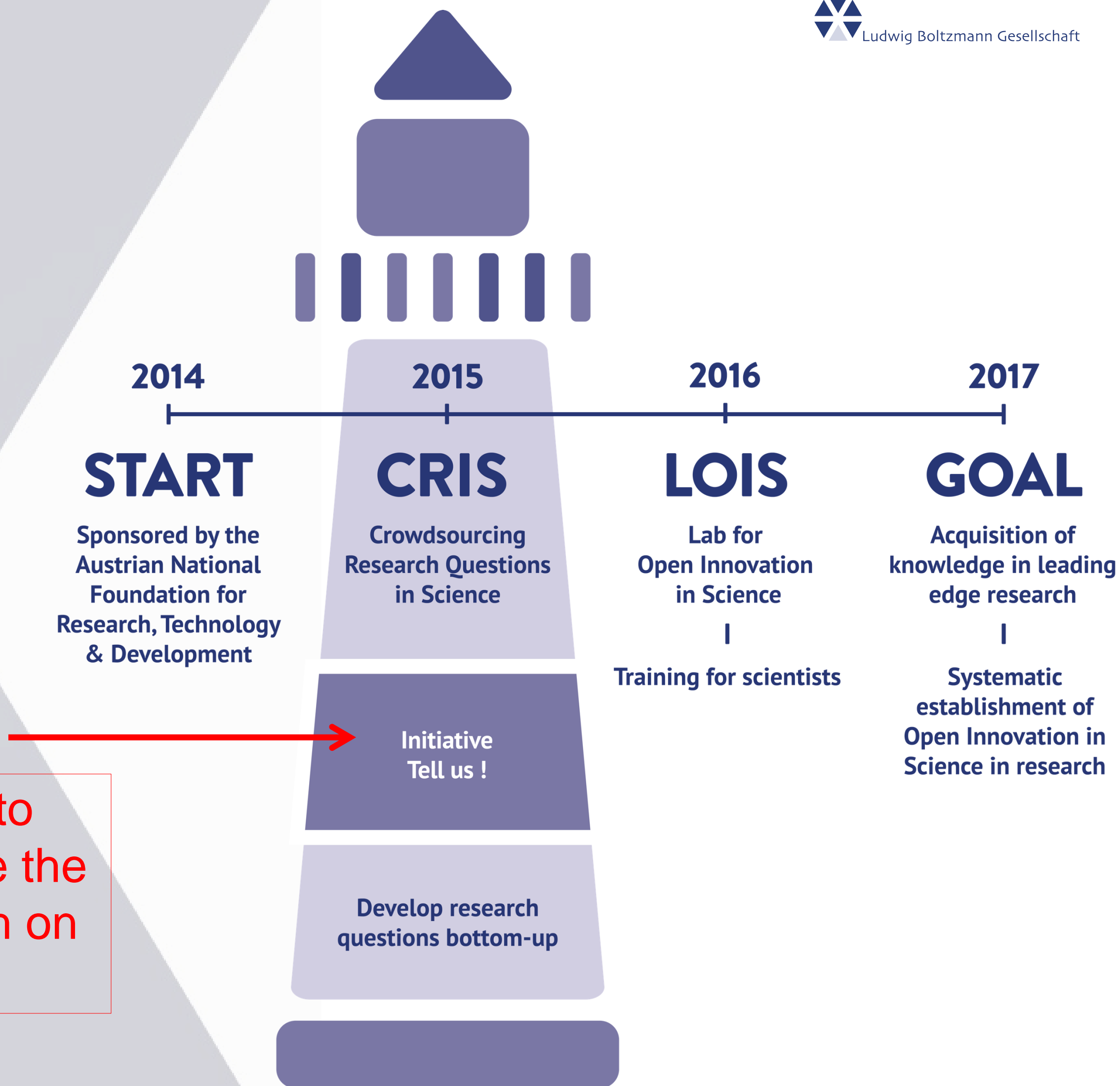
18 INSTITUTES,
600 EMPLOYEES

- ▶ The Ludwig Boltzmann Gesellschaft is an independent Austrian **research organisation focussing on health science**.
- ▶ Top level research has to serve society and generate innovations. This includes processes, work practices, products and services.
- ▶ We are convinced that Innovation is the result of consequent **interdisciplinarity, strong partnerships** and **targeted user orientation**.

OPEN INNOVATION IN SCIENCE

UNIQUE
PROJECT IN TWO PARTS —
CRIS AND LOIS

First European initiative to
involve people from outside the
science system in research on
mental health





TELL US!

Take part in the development of new research questions:

WHAT QUESTIONS ABOUT MENTAL HEALTH DOES RESEARCH NEED TO ANSWER?

Tell us from the 16th of April 2015 on:

WWW.REDENSIEMIT.ORG

Closing date 16th of June 2015

TELL US!

ENORMOUS STRAIN AND COST OF MENTAL ILLNESS

83,000,000
PEOPLE

A full **27 percent of all diseases** in Western societies are already attributable to mental disorders. This means that there have been or are more than 83 million people affected by mental illness.

(WHO, 2015)

15.7 percent of all **absenteeism** due to illness is the result of mental illness – sick leave for such a diagnosis is typically longer than average.

(OECD, 2014)



TELL US!

WHAT QUESTIONS ABOUT MENTAL HEALTH DOES RESEARCH
NEED TO ANSWER?

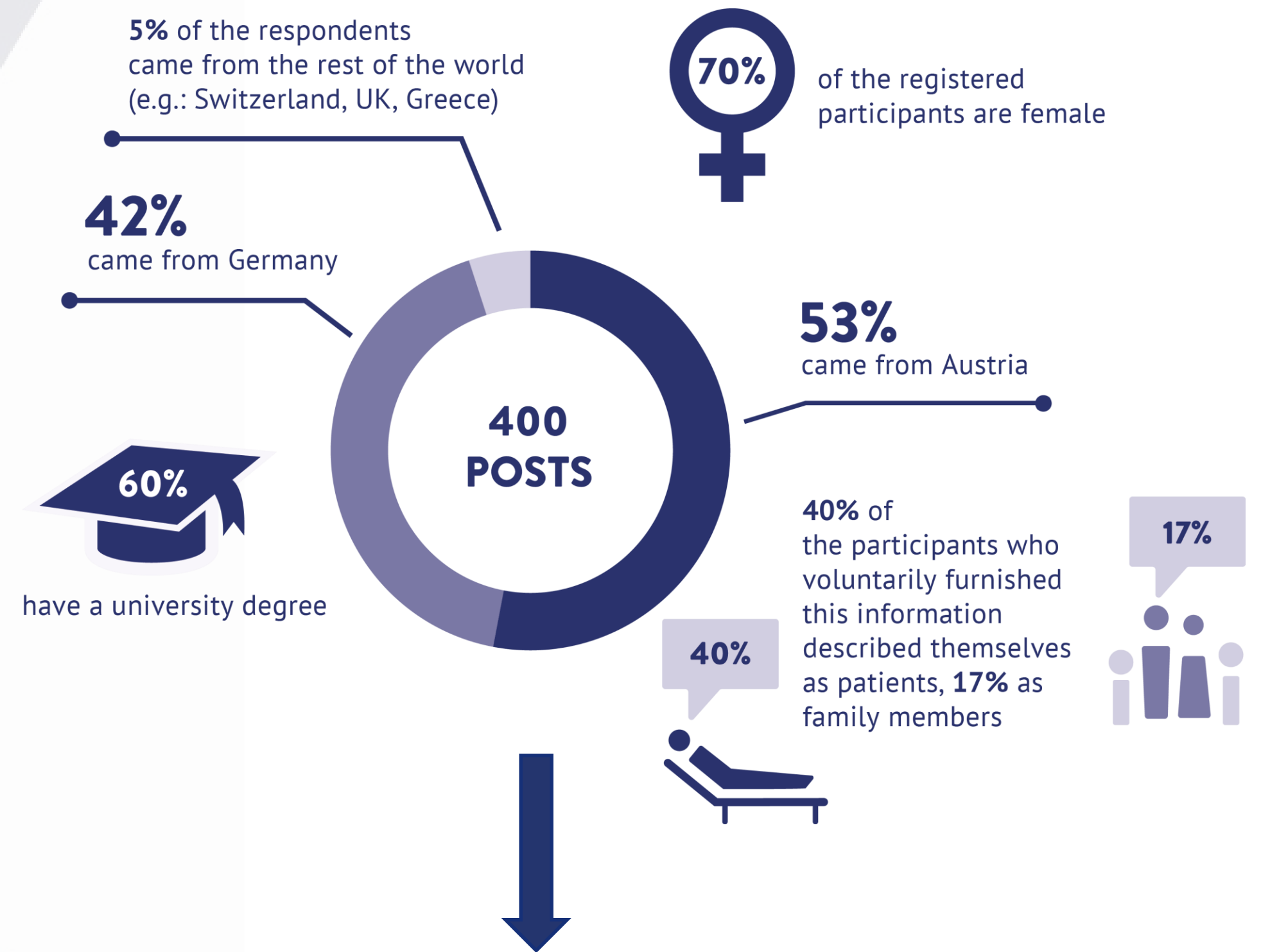
▶ [STAY INFORMED NOW](#)

START IN
8
DAYS



PEOPLE-ORIENTED RESEARCH

THE FIRST EUROPEAN-WIDE
CROWDSOURCING FOR RESEARCH
QUESTIONS IN THE DOMAIN
OF MENTAL ILLNESSES



The results have potential to lead to new solutions with high relevance for society - keyword "radical innovation"

THE PROCESS

COLLECT – CLUSTER –
EVALUATE

- ▶ content was **analysed by experts** and a team of **trained analysts**
- ▶ identified issues were compiled into **topic clusters**
- ▶ clusters served as basis for identifying new research topics
- ▶ all registered participants were invited for a **participants' voting (online)**
- ▶ an **international jury of experts** evaluated the research topics
- ▶ at the **end of 2015, the final results were presented** and made available to research



THE RESULTS OF THE ANALYSIS IN FIGURES:



THE TOP 3 TOPICS:



1. Mental health among children and adolescents
How can mental health in children and adolescents be maintained, and how can children and adolescents recover quickly?



2. Destigmatising mental illness
What does it mean to be stigmatised to a person with a mental illness? How does the stigma affect the course of the disease?



3. Healthcare research
What structures does society need to create to ensure that the mentally ill receive the best support possible throughout their recovery process?



NEW RESEARCH QUESTIONS IN THE DOMAIN OF MENTAL ILLNESS



THE RESULTS

BASIS FOR NEW
RESEARCH AGENDAS



- ▶ New proposals for a Ludwig Boltzmann Institute based on selected problem areas



- ▶ Themes are made public and made available to research (national and international)



- ▶ Detailed documentation and publication of the process as a basis for potential followers

„What science becomes in any historical era depends on what we make of it“

(SANDRA HARDING, AMERICAN PHILOSOPHER)

**THANK
YOU**
FOR YOUR ATTENTION.

CONTACT

LUDWIG BOLTZMANN GESELLSCHAFT

DR. LUCIA MALFENT
LUCIA.MALFENT@LBG.AC.AT

NUSSDORFERSTRASSE 64/6. FLOOR
1090 VIENNA, AUSTRIA
TEL. +43 (0) 1 513 27 21

WWW.OPENINNOVATIONINSCIENCE.AT
WWW.REDENSIEMIT.ORG