

PAPER

# The PyCBC search for gravitational waves from compact binary coalescence

To cite this article: Samantha A Usman *et al* 2016 *Class. Quantum Grav.* **33** 215004

## Manuscript version: Accepted Manuscript

Accepted Manuscript is “the version of the article accepted for publication including all changes made as a result of the peer review process, and which may also include the addition to the article by IOP Publishing of a header, an article ID, a cover sheet and/or an ‘Accepted Manuscript’ watermark, but excluding any other editing, typesetting or other changes made by IOP Publishing and/or its licensors”

This Accepted Manuscript is © © 2016 IOP Publishing Ltd.

During the embargo period (the 12 month period from the publication of the Version of Record of this article), the Accepted Manuscript is fully protected by copyright and cannot be reused or reposted elsewhere.

As the Version of Record of this article is going to be / has been published on a subscription basis, this Accepted Manuscript is available for reuse under a CC BY-NC-ND 3.0 licence after the 12 month embargo period.

After the embargo period, everyone is permitted to use copy and redistribute this article for non-commercial purposes only, provided that they adhere to all the terms of the licence <https://creativecommons.org/licenses/by-nc-nd/3.0>

Although reasonable endeavours have been taken to obtain all necessary permissions from third parties to include their copyrighted content within this article, their full citation and copyright line may not be present in this Accepted Manuscript version. Before using any content from this article, please refer to the Version of Record on IOPscience once published for full citation and copyright details, as permissions will likely be required. All third party content is fully copyright protected, unless specifically stated otherwise in the figure caption in the Version of Record.

View the [article online](#) for updates and enhancements.

# The PyCBC search for gravitational waves from compact binary coalescence

Samantha A. Usman<sup>1,2</sup>, Alexander H. Nitz<sup>1,3</sup>, Ian W. Harry<sup>1,4</sup>,  
Christopher M. Biwer<sup>1</sup>, Duncan A. Brown<sup>1</sup>, Miriam Cabero<sup>3</sup>,  
Collin D. Capano<sup>3,5</sup>, Tito Dal Canton<sup>3</sup>, Thomas Dent<sup>3</sup>,  
Stephen Fairhurst<sup>2</sup>, Marcel S. Kehl<sup>6,7</sup>, Drew Keppel<sup>3</sup>,  
Badri Krishnan<sup>3</sup>, Amber Lenon<sup>1</sup>, Andrew Lundgren<sup>3</sup>,  
Alex B. Nielsen<sup>3</sup>, Larne P. Pekowsky<sup>1</sup>, Harald P. Pfeiffer<sup>4,6,8</sup>,  
Peter R. Saulson<sup>1</sup>, Matthew West<sup>1</sup>, Joshua L. Willis<sup>3,9</sup>.

<sup>1</sup> Department of Physics, Syracuse University, Syracuse, NY 13244, USA

<sup>2</sup> Cardiff University, Cardiff CF24 3AA, United Kingdom

<sup>3</sup> Max-Planck-Institut für Gravitationsphysik, Albert-Einstein-Institut, D-30167 Hannover, Germany

<sup>4</sup> Max-Planck-Institut für Gravitationsphysik, Albert-Einstein-Institut, Am Mühlenberg 1, D-14476 Golm, Germany

<sup>5</sup> Maryland Center for Fundamental Physics & Joint Space-Science Institute, Department of Physics, University of Maryland, College Park, MD 20742, USA

<sup>6</sup> Canadian Institute for Theoretical Astrophysics, University of Toronto, Toronto, Ontario M5S 3H8, Canada

<sup>7</sup> Max-Planck-Institut für Radioastronomie, Auf dem Hügel 69, 53121 Bonn, Germany

<sup>8</sup> Canadian Institute for Advanced Research, 180 Dundas St. West, Toronto, ON M5G 1Z8, Canada

<sup>9</sup> Abilene Christian University, Abilene, TX 79601, USA

E-mail: [samantha.usman@ligo.org](mailto:samantha.usman@ligo.org)

**Abstract.** We describe the PyCBC search for gravitational waves from compact-object binary coalescences in advanced gravitational-wave detector data. The search was used in the first Advanced LIGO observing run and unambiguously identified two black hole binary mergers, GW150914 and GW151226. At its core, the PyCBC search performs a matched-filter search for binary merger signals using a bank of gravitational-wave template waveforms. We provide a complete description of the search pipeline including the steps used to mitigate the effects of noise transients in the data, identify candidate events and measure their statistical significance. The analysis is able to measure false-alarm rates as low as one per million years, required for confident detection of signals. Using data from initial LIGO's sixth science run, we show that the new analysis reduces the background noise in the search, giving a 30% increase in sensitive volume for binary neutron star systems over previous searches.

PACS numbers: 04.30.-w, 04.25.-g

## 1. Introduction

The detection of the binary black hole mergers GW150914 and GW151226 by the Laser Interferometer Gravitational-wave Observatory (LIGO) has established the field of gravitational-wave astronomy [1, 2, 3]. Advanced LIGO [4, 5] will be joined by the Virgo [6, 7] and KAGRA [8] detectors in the near future, forming an international network of gravitational-wave observatories. Beyond the expected regular detections of binary black holes [9], compact-object binaries containing a neutron star and a black hole or two neutron stars are likely candidates for detection by this network [10, 11, 12]. Collectively, these three types of gravitational-wave sources are referred to as compact binary coalescences (CBC).

The identification of gravitational-wave candidates in the detector data is a complex process, which is performed by a *search pipeline*. The search pipeline is also responsible for determining the significance of each identified gravitational-wave event. This paper describes a new pipeline to search for gravitational waves from compact-object binaries that uses the *PyCBC* software framework [13] to implement an all-sky search for compact binary coalescence. The PyCBC search pipeline described here builds upon the algorithms [14, 15, 16, 17, 18] used to search for compact-object binary coalescence with the first-generation LIGO and Virgo detectors [19, 20, 21, 22, 23, 24, 25, 26, 27]. This pipeline incorporates new algorithms that improve the sensitivity of the search and that reduce its computational cost. We provide a complete description of the search pipeline, emphasizing the new developments that have been made for the advanced-detector era. To demonstrate the efficacy of PyCBC, we re-analyze data from Initial LIGO's sixth science run and show that the new pipeline can achieve a  $\sim 30\%$  increase in sensitive volume to binary neutron stars, as compared to the pipeline used in the original analysis of the data [27]. Details of the results of the PyCBC search on the first aLIGO observing run are given in [28, 12] with the two observed binary black hole mergers discussed in detail in [1, 2].

This paper is organized as follows: Section 2 provides an overview of the search pipeline and the methods used to detect gravitational waves from compact-object binaries in LIGO data. Section 3 gives a description of the developments implemented in this pipeline. Section 4 compares the performance of the new pipeline to that of the pipeline that analyzed the sixth LIGO science run and Virgo's second and third science runs [27]. Finally, Section 5 summarizes our findings and suggests directions for future improvements.

## 2. Search Overview

The purpose of the PyCBC search is to identify candidate gravitational-wave signals from binary coalescences in the detector data and to provide a measure of their statistical significance. Since the amplitude of the majority of gravitational-wave sources will be comparable to the noise background, signal processing techniques are required to

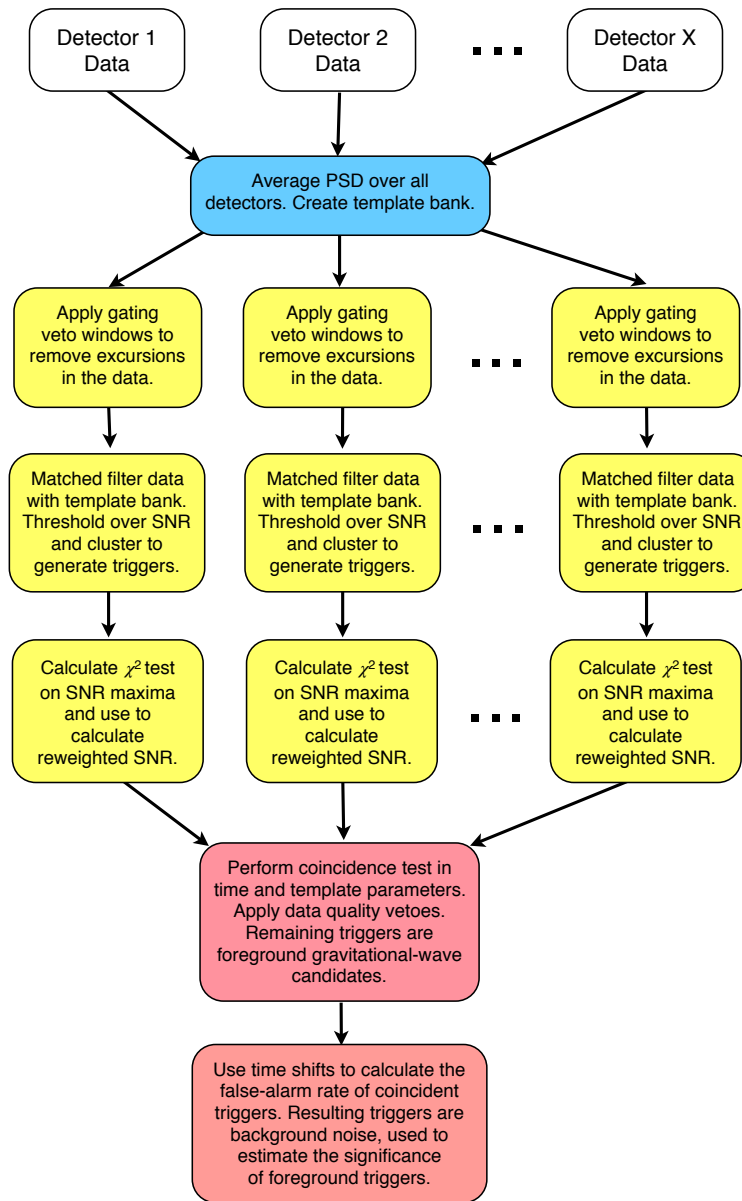
identify the candidate events. The gravitational waveforms for compact-object binaries can be modeled using a combination of analytical and numerical methods [29, 30]. Consequently, it is natural to use matched filtering to distinguish signals from the noise background [31]. If the detector output contained only a stationary, Gaussian noise, the matched filter signal-to-noise ratio (SNR) would suffice as a detection statistic since its distribution in stationary, Gaussian noise is well known [32]. In practice, the detector data contains non-stationary noise and non-Gaussian noise transients [33, 34]. Additional steps must therefore be taken to mitigate the effect of these noise transients and to assign an accurate statistical significance to candidate signals. Even for loud sources, the statistical significance of candidate detections must be empirically measured since it is not possible to shield the detectors from gravitational-wave sources and no complete theoretical model of the detector noise exists [35].

Figure 1 shows the steps that the pipeline uses to find signals and measure their significance. The input to the pipeline is the detector’s calibrated strain data [36, 37]. In addition to possible signals, the strain data contains two classes of noise: a primarily stationary, Gaussian noise component from fundamental processes such as thermal noise, quantum noise, and seismic noise coupling into the detector [5] and non-Gaussian noise transients of instrumental and environmental origin [38, 34]. To eliminate the worst periods of detector performance, data quality investigations [39, 40, 41, 33] are used to characterize detector data into three general classes: (i) the data is polluted with enough noise that the data should be discarded without being searched, (ii) the data can be filtered, but candidate events that lie in intervals of poor data quality should be discarded, or *vetoed*, due to the presence of a instrumental or environmental artifacts, or (iii) the data is suitable for astrophysical searches. Data quality investigations are conducted independently of the search pipeline (by looking only at detector performance), as well as by determining the effect of instrumental artifacts on the noise background of the search pipeline. After removing data that is not suitable for astrophysical searches, the pipeline begins its analysis, following the remaining steps shown in Figure 1.

We do not *a priori* know the parameters of gravitational waves in the data, so a *bank* of template waveforms is constructed that spans the astrophysical signal space [42, 43, 44, 45, 46, 47, 48, 49, 50, 51, 52, 53]. If the total mass of a compact-object binary is lower than  $M \lesssim 12 M_{\odot}$  [54, 55] and the dimensionless angular momenta of the compact objects (their *spin*) are small  $cS_{1,2}/Gm_{1,2}^2 \lesssim 0.4$  [56, 57] (as is the case for binary neutron stars), then the detectors are sensitive to the inspiral phase of the waveform and this can be well modeled using the post-Newtonian approximations (see e.g. Ref. [29] for a review). For high-mass and high-spin binaries, analytic models tuned to numerical relativity can provide accurate predictions for gravitational waves from compact binaries [58, 59, 60, 30, 61]. The template bank is constructed to cover the space of circular binaries with aligned spins. It is generated so that the loss in matched-filter SNR due to the discrete nature of the bank is no more than 3%. The exact placement of the templates depends on the detector’s noise power spectral density

PyCBC search

4



**Figure 1.** A flowchart indicating the different steps of the search pipeline. Data from the detectors are averaged to create a power spectral density necessary to place a bank of templates that cover the search parameter space (blue box). Times when the detector data contain loud noise transients are removed, or *vetoed*. The data from each detector is then matched filtered and triggers are generated by thresholding and clustering the signal-to-noise ratio time series. A chi-squared test is computed for each trigger and the trigger’s matched-filter SNR is re-weighted by the value of the chi-squared statistic to better distinguish between signal and noise (yellow boxes). The pipeline determines which triggers survive time and template coincidence, discarding triggers that lie in times of poor data quality (red box). The triggers that pass the coincidence and data quality tests are labelled candidate events. Finally, multiple time shifts help generate a noise background realization that is used to measure the significance of the candidate events (bottom box).

(PSD)  $S_n(f)$ . The PyCBC search pipeline places templates using a single noise PSD, averaged over all of the time and all detectors in the search network. The data from each detector in the network is matched filtered against this single template bank. We describe the process of constructing this template bank in Section 3.1.

Since the waveform of the target signals are well modeled, the pipeline uses matched filtering to search for these signals in detector noise. In the PyCBC pipeline, each detector's data is filtered independently. The search templates are restricted to spin aligned binaries, and only the dominant gravitational wave harmonic [62]. Consequently, the sky location and orientation of the binary affect only the overall amplitude and phase of the waveform. These are maximized over when constructing the matched filter by projecting the data signal against two orthogonal phases of the template  $h(t)$ , given by  $h_{\cos}$  and  $h_{\sin}$  [17]. The matched filter then consists of a weighted inner product in the frequency domain used to construct the signal-to-noise ratio (SNR),  $\rho(t)$ , as:

$$\rho^2(t) = \frac{(s|h_{\cos})^2}{(h_{\cos}|h_{\cos})} + \frac{(s|h_{\sin})^2}{(h_{\sin}|h_{\sin})} = \frac{(s|h_{\cos})^2 + (s|h_{\sin})^2}{(h_{\cos}|h_{\cos})}, \quad (1)$$

where the inner product is given by

$$(s|h)(t) = 4\text{Re} \int_{f_{\text{low}}}^{f_{\text{high}}} \frac{\tilde{s}(f)\tilde{h}^*(f)}{S_n(f)} e^{2\pi i f t} df. \quad (2)$$

Here  $\tilde{s}(f)$  denotes the Fourier-transformed detector data, defined by

$$\tilde{s}(f) = \int_{-\infty}^{+\infty} s(t)e^{-2\pi i f t} dt, \quad (3)$$

and  $\tilde{h}(f)$  denotes the Fourier-transformed template waveform.  $S_n(f)$  is the one-sided PSD of the detector noise defined by

$$\langle \tilde{s}(f)\tilde{s}(f') \rangle = \frac{1}{2} S_n(f)\delta(f - f'), \quad (4)$$

where angle brackets denote averaging over noise realizations and  $\delta$  is the Dirac delta function. The frequency limits  $f_{\text{low}}$  and  $f_{\text{high}}$  are determined by the bandwidth of the detector's data, and the two phases of the template are related by  $\tilde{h}_{\sin}(f) = i\tilde{h}_{\cos}(f)$ .

Despite extensive data quality investigations, noise transients of unknown origin still remain after data quality vetoes are applied to the search. To mitigate the effect of these noise transients, the pipeline identifies excursions in the input strain data  $s(t)$  and then applies a window to the detector data, zeroing out the data around the time of a noise transient before filtering. This procedure, called *gating*, is described in Section 3.2. Having removed these noise transients, the pipeline computes the matched-filter SNR  $\rho(t)$  for each template in each detector. The search identifies the times when the matched-filter SNR exceeds a predetermined threshold for a given template in a detector's data. The pipeline applies a clustering algorithm, which takes the largest value within a predefined window of  $\rho(t)$  and identifies maxima in the SNR time series.

This process yields a list of times when a signal may be present, which are called *triggers*. The matched filtering, thresholding and clustering algorithms are described in Section 3.3.

Triggers generated by matched filtering the data against the template bank are subject to a chi-squared test that determines if the time-frequency distribution of power in the data is consistent with the expected power in the matching template waveform [16]. To construct this test, the template is split into  $p$  frequency bins. These bins are constructed so that each contributes an equal amount of power to the total matched-filter SNR. The matched-filter SNR,  $\rho_i$ , is constructed for each of these  $p$  bins. For a real signal,  $\rho_i$  should contain  $1/p$  of the total power. The  $\chi^2$  statistic compares the expected to the measured power in each bin according to

$$\chi^2 = p \sum_{i=1}^p \left[ \left( \frac{\rho_{\cos}^2}{p} - \rho_{\cos,i}^2 \right)^2 + \left( \frac{\rho_{\sin}^2}{p} - \rho_{\sin,i}^2 \right)^2 \right], \quad (5)$$

where  $\rho_{\cos}^2$  and  $\rho_{\sin}^2$  are the SNRs of the two orthogonal phases of the matched filter. Lower-mass binary systems, such as binary neutron stars, lose energy to gravitational waves more slowly than higher-mass systems. Consequently, the waveforms of lower mass systems are longer, having more gravitational-wave cycles in the sensitive band of the detector. The PyCBC pipeline allows the number of bins to be specified as a function of the intrinsic parameters of the template. This allows the search to use more bins in the chi-squared test for longer templates, making the test more effective. In previous analyses, the chi-squared test was the most computationally costly part of the pipeline [18]. The PyCBC pipeline uses a more efficient algorithm for computing the chi-squared statistic, which vastly reduces the computational cost. Details of the chi-squared test are given in Section 3.4.

For a trigger of given matched-filter SNR, larger values of  $\chi^2$  indicate a higher likelihood of a noise transient origin as opposed to a signal. For signals, the reduced chi-squared,  $\chi_r^2 = \chi^2/(2p - 2)$ , should be near unity. To down-weight triggers caused by noise transients, the matched-filter SNR is re-weighted [27, 18] according to

$$\hat{\rho} = \begin{cases} \rho / [(1 + (\chi_r^2)^3)/2]^{\frac{1}{6}}, & \text{if } \chi_r^2 > 1, \\ \rho, & \text{if } \chi_r^2 \leq 1. \end{cases} \quad (6)$$

Having computed the re-weighted SNR for each trigger, the pipeline discards all triggers that lie below a pre-determined re-weighted SNR threshold.

The search requires that signals are observed with consistent parameters in the detector network. First, any triggers that occur during times of instrumental or environmental artifacts, as determined by the input data quality metadata, are *vetoed*. To be considered a candidate event, triggers must be observed with a time of arrival difference less than or equal to the gravitational-wave travel time between detectors, with an additional window to account for uncertainty in the measurement of the time of arrival. The triggers must also be observed with the same template in both detectors.

Triggers that survive the time and parameter coincidence test are referred to as *candidate events*. Details of the coincidence tests are presented in Section 3.5.

The quadrature sum of the reweighted SNR  $\hat{\rho}$  in each detector is the pipeline’s *detection statistic* which ranks the likelihood that a trigger is due to a gravitational-wave signal. To assign a statistical significance to detection candidates, the pipeline measures the false-alarm rate of the search as a function of the detection-statistic value  $\hat{\rho}_c$ . Since it is not possible to isolate the detectors from gravitational waves, it is impossible to directly measure the detector noise in the absence of signals. This, together with the non-stationary and non-Gaussian nature of the noise, means that the false-alarm rate of the search must be empirically measured. This is done by applying a time shift to the triggers from one detector relative to another. The minimum time-shift offset is chosen to be larger than the time-coincidence window used to determine if signals are observed with consistent parameters in the network. Events in the time-shifted analysis therefore cannot be due to the coincidence of the pair of triggers produced by a real gravitational-wave signal. Many time shifts create a large background data set which are used to approximate the background noise and estimate the search’s false-alarm rate.

Since different templates in the bank can respond to detector noise in different ways, the search background is not uniform across the template bank. To maintain the sensitivity of the search to signals over a wide range of masses under this non-uniform background distribution, the search sorts both candidate events and background events into different classes. The false-alarm rate of the search in each class is used to assign a p-value to the candidate events; a given candidate event is compared to the background events from the same class. To account for having searched multiple classes whose response is not completely independent [63], the significance of candidate events is decreased by applying a trials factor equal to the number of bins,  $n_{\text{bins}}$  to obtain a final p-value which describes the statistical significance of a candidate event. This procedure is described in Section 3.6.

### 3. Search Description

In this section we describe the methods and algorithms used in the PyCBC search pipeline introduced in Section 3. In particular, we focus on the parts of the PyCBC search that improve upon the ihope pipeline described in Ref. [18].

#### 3.1. Template Bank Placement

Methods for creating template banks of non-spinning and aligned-spin waveform filters for a given parameter space have been extensively explored in the literature [42, 43, 44, 45, 46, 47, 48, 49, 50, 51, 52, 53, 64]. Here we use the method presented in [53]. The density of templates across the parameter space depends upon the noise power spectrum of the detectors.



The PyCBC search generates a template bank covering the four dimensional space of mass and aligned spin of the two components. The pipeline uses a single template bank for all detectors and over the entire duration of the search. Using a common template bank for all templates allows us to require coincident events to be observed in the same template in different detectors, as discussed in Section 3.5, which improves the sensitivity of the pipeline.

To generate an appropriate bank, we must compute a noise PSD estimate averaged both over time and over detectors. We have explored several different methods to create a single noise PSD that is valid for the duration of the analysis period [65] and find that the harmonic mean provides the best estimate for placing the template bank. Specifically, we measure the noise PSD every 2048 seconds over the observation period, independently in each detector, using the median method of Ref. [17]. We then obtain  $N_s$  power spectra  $S_n$  for each detector in the network. We first construct the harmonic mean PSD for a single detector, defined by averaging each of the  $f_k$  frequency bins independently according to

$$S_n^{\text{harmonic}}(f_k) = N_s \left/ \sum_{i=1}^{N_s} \frac{1}{S_n^i(f_k)} \right. . \quad (7)$$

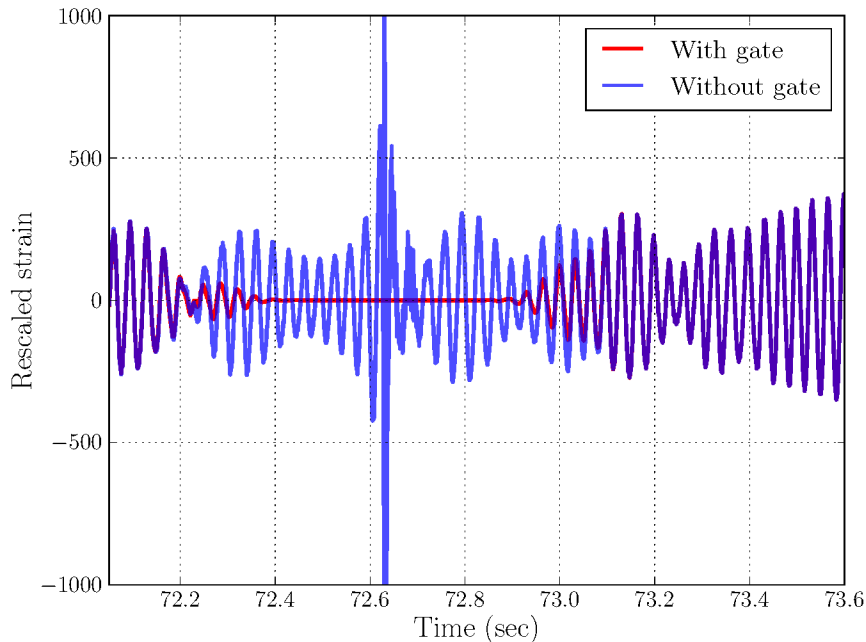
We then use the same method to compute the harmonic mean of the resulting PSDs from each detector in the network.

The PSD estimate, and hence the bank itself, only needs to be re-generated when there are significant changes in the detector's noise PSD. This typically only happens when significant physical changes occur in the detectors. Using a single PSD estimate for an extended period of time allows the efficient use of template banks that include compact-object spin, as demonstrated in Ref. [28]. In Section 4, we compare the sensitivity and the computational cost of using a single template bank constructed with an averaged PSD and that of using regenerated template banks with shorter PSD samples.

### 3.2. Removal of Non-Gaussian Noise Prior to Filtering

Transient noise in the detectors' data streams can produce high SNR triggers, even when the transients do not resemble the templates. Data quality investigations and vetoes [41, 33] remove many, but by no means all, of these loud transients which can affect the astrophysical sensitivity of the search. Although short-duration, loud transients (or *glitches*) that survive data-quality investigations are suppressed by the chi-squared test, they can reduce search sensitivity through two mechanisms: *dead time* due to the clustering algorithm and *ringing* of the matched filter; both of these mechanisms are related to the impulse response of the matched filter. In this section, we explain the origin of these features and describe the methods used by the pipeline to reduce their effect on the search's sensitivity.

The impulse response of the matched filter is obtained by considering a delta-function glitch in the input data  $s(t) = \delta(t - t_g)$ , where  $t_g$  is the time of the transient.



**Figure 2.** The effect of gating on a loud noise transient. Both lines show the detector strain, which has been rescaled by a factor of  $10^{21}$  prior to filtering. On this scale, the transient has a peak magnitude over 5,000. The blue line shows the data before applying the Tukey window, the red line shows the data after.

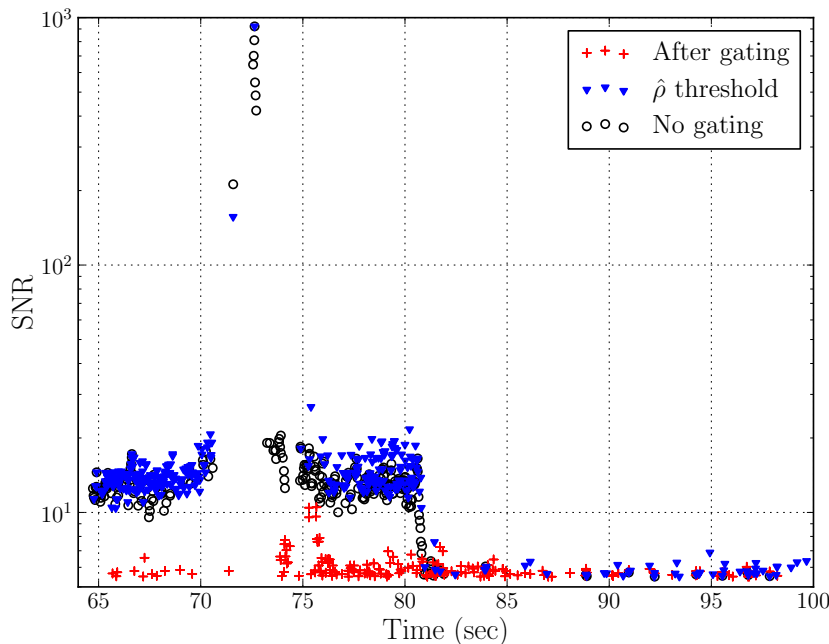
Although not all types of glitches are of this nature [66], many loud noise transients are well approximated as  $s(t) = n(t) + \delta(t - t_g)$ . For example, Figure 2 shows a typical loud transient glitch from LIGO’s sixth science run. As loud noise transients occur frequently in detector data, most glitches are not individually investigated. Although the cause of this glitch is unknown, it likely comes from an instability in the detector’s control systems. For such a glitch, the matched-filter SNR given by Eq. (1) will be dominated by

$$\rho^2(t) \approx I_{\cos}^2(t - t_g) + I_{\sin}^2(t - t_g), \quad (8)$$

where

$$I_{\cos, \sin}(t - t_g) = 4\text{Re} \int_{f_{\text{low}}}^{f_{\text{high}}} \frac{\tilde{h}_{\cos, \sin}(f)}{S_n(f)} e^{2\pi i f(t_g - t)} df \quad (9)$$

is the impulse response of each of the two phases of the matched filter. This is equal to the convolution of the template,  $h_{\cos, \sin}(t)$  with the inverse Fourier transform of inverse power spectral density,  $1/S_n(f)$ . To ensure that the impulse response of the filter is of finite duration, the inverse PSD is truncated to a duration of 16 seconds in the time domain before filtering [17]. The inverse PSD truncation serves to smear out very sharp features in the PSD: using a 16-second window provides sufficient resolution of these features, while minimizing the length of the impulse response. The length of the template can be on the order of minutes, leading to very long impulse response times



**Figure 3.** Response of the pipeline to a loud glitch. The matched-filter SNR of the triggers generated is shown as a function of time. Black circles show the triggers generated immediately after filtering without gating applied to the input data. Blue triangles show the triggers that remain after the re-weighted SNR is computed for each trigger and a threshold of  $\hat{\rho} > 5.5$  is applied. Although the significance of these triggers is suppressed by the re-weighted SNR, many triggers still remain which can increase the noise background of the search. The red crosses show the triggers produced by the search after gating is applied and the SNR is reweighted. The large majority of triggers caused by the glitch in the  $\pm 8$  seconds around the transient are absent.

for the matched filter, although the template amplitude is quite sharply peaked near merger.

Figure 3 shows the result of filtering the glitch in Figure 2 through a template bank and generating triggers from the matched-filter SNR time series. The black circles show the triggers generated by the ringing of the filter due to the glitch. The largest SNR values occur close to the time of the glitch and are due to the impulse response of the template  $h$ . The shoulders on either side of this are due to the impulse response of the inverse power spectrum  $1/S_n(f)$ . This leads to the two effects described above: an excess of triggers around the time of the glitch which can increase the noise background of the search and a window of time containing multiple noise triggers that can make it difficult to distinguish signal from noise. In Figure 3, we also plot the triggers that have a re-weighted SNR above the threshold  $\hat{\rho} > 5.5$ . Although the use of the chi-squared veto to construct the reweighted SNR suppresses the significance of these triggers, it does not completely remove them from the analysis and an increased trigger rate around the time of the glitch remains.

The PyCBC pipeline identifies non-stationary transients and removes them from the data, a process called *gating*. The data around short-duration noise transients is set to zero prior to matched filtering. To zero the data, the input data  $s(t)$  is multiplied by a window function centered on the time of the peak. A Tukey window is applied to smoothly roll the data to zero and prevent discontinuities in the input data. The Tukey window used has a shape parameter of  $\alpha = 0.5$ , where  $\alpha$  is the fraction of the window inside the cosine tapered region. The effect of this gating on the strain data is shown in Figure 2 where the input data is zeroed for 1 second around the time of the glitch. Figure 3 shows the output of the search when run on the gated data. In addition to removing the loud triggers with  $\text{SNR} \sim 1000$  at the time of the glitch, gating removed the additional triggers with  $\text{SNR} \sim 10$  generated by the impulse response of the filter before and after the glitch. This improves search sensitivity by reducing the amount of data corrupted by the glitch to only the windowed-out data, and reduces the overall noise background by removing noise triggers that could possibly form coincident events. Gating is typically only applied to short-duration transients length of order 1 s. Longer duration transients that are identified by data quality investigations are removed prior to analysis by the pipeline.

This process requires the identification of the time of noise transients that will be removed by gating. These times can be determined by either data quality investigations or by a separate search for excess power in the input strain data (typically with a high SNR threshold) [67, 68]; this method was used in Ref. [1]. Alternatively, short-duration glitches that are not flagged by data quality investigations can be identified by the pipeline. To do this, the pipeline measures the power spectral density of the input time series. The data is Fourier transformed, whitened in the frequency domain, and then inverse Fourier transformed to create a whitened time-series. The magnitude of the whitened strain data is computed and times exceeding a pre-determined threshold are identified. Peaks that lie above the threshold are identified by the time-clustering algorithm of Ref. [17]. The data around these times is then gated using the procedure described above.

### 3.3. Matched Filtering

A core task of the search pipeline is to correlate the detector data against a bank of template waveforms to construct the matched filter signal-to-noise ratio. The matched filtering used in our search pipeline is based on the FindChirp algorithm developed for use in the Initial LIGO/Virgo searches for gravitational waves from compact binaries [17]. In this section we describe two improvements to the FindChirp algorithm: changes to the noise power spectral density estimation and a new thresholding and clustering algorithm that identifies maxima in the signal-to-noise ratio time series.

The matched filter in Eq. (2) is typically written in terms of continuous quantities, e.g.  $s(t)$ ,  $h(t)$ , and  $S_n(f)$ . In practice, the pipeline works with discretely sampled quantities, e.g.  $s_j \equiv s(t_j)$ , where  $s_j$  represents the value of  $s(t)$  at a particular time

$t_j$ . Similarly,  $S_n(f_k)$  represents the value of the noise power spectral density at the discrete frequency  $f_k$ . The input strain data is a discretely sampled quantity with a fixed sampling interval, typically  $\Delta t = 1/4096$  s. Fourier transforms are computed using the Fast Fourier Transform (FFT) algorithm in blocks of length  $T_B = 256$  seconds. For this block length, the number of discretely sampled data points in the input time-series data  $s_j$  is  $N = T_B/\Delta t = 256 \times 4096 = 2^{20}$ . The discrete Fourier transform of  $s_j$  is given by

$$\tilde{s}_k = \sum_{j=0}^{N-1} s_j e^{-2\pi i j k / N}, \quad (10)$$

where  $k = f_k/(N\Delta t)$ . This quantity has a frequency resolution given by  $\Delta f = 1/(N\Delta t)$ .

To construct the integrand of the matched filter, the discrete quantities  $\tilde{h}_k$ ,  $\tilde{s}_k$ , and  $S_n(f_k)$  must all have the same length and frequency resolution. The most straightforward way to do this is to couple the computation of  $\tilde{s}_k$  and  $S_n(f_k)$ , by using the same length of data to compute both. An average PSD is then computed by averaging (typically) 15 overlapping blocks of data [69, 17, 18], leading to a large variance in the estimated PSD.

The PyCBC pipeline decouples the computation of  $S_n(f_k)$  and  $\tilde{s}_k$ , allowing many more averages to be used to compute  $S_n(f_k)$ . As discussed in Section 3.2, the inverse PSD is truncated to 16 seconds to reduce the length of the filter's impulse response: thus, it is natural to estimate the PSD using 16-second time-domain blocks. An input filter length of 2048 seconds allows for 127 such blocks, leading to significantly less variance in the PSD estimate. The resulting PSD is then linearly interpolated to match the resolution of the data. Finally, the interpolated  $S_n(f_k)$  is inverted, inverse Fourier transformed, truncated to a fixed length of 16 seconds in the time domain [17], and then Fourier transformed to the frequency domain for use in the matched filter. Implementation of the matched filtering algorithm in PyCBC can be performed using either single-threaded or parallel FFT engines, such as FFTW [70] or the Intel Math Kernel Library. The choice of single- or multi-threaded filtering is made at runtime, so that the fastest implementation (one multi-threaded process, or several single-threaded processes) can be made depending on the architecture used.

Once the matched-filter SNR time series  $\rho_j^2$  has been computed, the final step of the filtering is to generate *triggers*. These are maxima where the SNR time series exceeds a chosen threshold value. For either signals or noise transients, many sample points in the SNR time series can exceed the SNR threshold. Since a real signal will have a single, narrow peak in the SNR time series, the pipeline applies a time-clustering algorithm to keep local maxima of the SNR time series that exceed the threshold.

The PyCBC pipeline divides the 256-second SNR time series into equal 1-second windows and then identifies the maximum of the time series within each window. As the maximization within each window is independent from other windows, the clustering for each window can be parallelized for efficiency on multi-core processing units. If the desired clustering window is greater than 1 second, then the initial list of

maxima—potentially one for each window within the segment—is further clustered: a candidate trigger in a window is kept only if it has a higher SNR than both the window before and after it, ensuring that it is a local maximum in the SNR time series. This clustering algorithm is more computationally efficient than the running maximization over template length described in Ref. [17]. Furthermore, it reduces the clustering window, thereby increasing the search sensitivity.

### 3.4. Signal Consistency Tests

The chi-squared signal-consistency test introduced in Ref. [71] and developed in Ref. [16] is a powerful way to distinguish between signals and noise in searches for gravitational waves from compact-object binaries. The PyCBC search allows the number of bins  $p$  in Eq. (5) to be varied as a function of the parameters of the template [28]. This results in an improvement in search sensitivity, as demonstrated in Section 4.

The chi-squared statistic can be computationally intensive to calculate, however. For every FFT operation required to compute the SNR time series, the chi-squared statistic requires an additional  $p$  FFT operations, one for each frequency bin of Eq. (5). The PyCBC pipeline instead calculates the chi-squared test only at the time samples corresponding to clustered triggers in the matched-filter SNR time series. To do this, the pipeline uses an optimized integral over frequency, rather than computing the FFT. If data quality is poor and the number of triggers in a FFT block is large, the FFT method becomes more efficient. We quantify this cross-over point below.

To compare the computational cost of the two methods, we consider the calculation of the  $p$  matched filters for the naïve chi-squared test implementation. Computation of the  $\rho_i^2$  for each of the  $p$  bins requires an inverse complex FFT. For a data set containing  $N$  sample points the number of operations is  $p \times 5N \log(N)$ .<sup>‡</sup> If we instead calculate the chi-squared value only at the peaks, we must evaluate

$$\frac{\chi^2 + \rho^2}{p}[j] = \sum_{i=1}^p \rho_i^2[j], \quad (11)$$

at the set of points  $[j]$  identified as triggers. We can re-write Eq. (11) as

$$\frac{\chi^2 + \rho^2}{p}[j] = \sum_{i=1}^p \left( \sum_{k=k_i^{\min}}^{k_i^{\max}} \tilde{q}_k e^{2\pi i j k / N} \right)^2, \quad (12)$$

where  $k_i^{\min, \max}$  denote the frequency boundaries of the  $p$  bins and are given by  $k_i^{\min, \max} = f_i^{\min, \max} / \Delta f$ , and  $\tilde{q}_k$  is the kernel of the matched filter, defined as [69]

$$\tilde{q}_k = \frac{\tilde{s}(f) \tilde{h}(f)}{S_n(f)}. \quad (13)$$

<sup>‡</sup> Since the FFT dominates the operations count, we have neglected lower-order terms that do not significantly contribute to the computational cost.

PyCBC search

14

We can further reduce the computational cost of the chi-squared by noting that the exponential term requires the explicit calculation of  $e^{2\pi ijk/N}$  at  $k_{\max} = N/2$  points. This can be reduced to a single computation of the exponential term by pre-calculating  $e^{2\pi ij/N}$  once and then iteratively multiplying by this constant to obtain the next term needed in the sum. To do this, we write Eq. (12) in the following form:

$$\frac{\chi^2 + \rho^2}{p}[j] = \sum_{i=1}^p \left( \sum_{k=k_i^{\min}}^{k_i^{\max}} \tilde{q}_k e^{2\pi ij/N} (e^{2\pi ij/N})^{k-1} \right)^2. \quad (14)$$

This reduces the computational cost of each term in the sum to two complex multiplications: one to multiply by the pre-computed constant  $e^{2\pi ij/N}$  and one for the multiplication by  $\tilde{q}$ . Computing the right hand side of Eq. (14) then requires the addition of two complex numbers for each term in the sum. The total computational cost to compute the chi-squared test for  $N_P$  points is then  $14k_{\max} \times N_P = 7N \times N_P$ .

For small numbers of matched-filter SNR threshold crossings, this new algorithm can be significantly less costly than calculating the chi-squared statistic using the FFT method. However, if the number of threshold crossings  $N_P$  is large, then the FFT method will be more efficient due to the  $\log N$  term. The crossover point can be estimated for  $p$  chi-squared bins as

$$N_p = \frac{p \times 5N \log(N)}{14k_{\max}} = \frac{5}{7} p \log(N), \quad (15)$$

although this equation is approximate because the computational cost of an FFT is highly influenced by its memory access pattern. For a typical LIGO search where  $N = 2^{20}$ , the new algorithm is more efficient when the number of points at which the  $\chi^2$  statistic must be evaluated is  $N_p \lesssim 100$ . For real LIGO data, the number of times that the  $\chi^2$  statistic must be evaluated is found to be less than this threshold on average, and so this method significantly reduces the computational cost of the pipeline. However, there are still periods of time where the data quality is poor and the FFT method is more efficient. Consequently, the pipeline described here computes  $N_P$  and uses either the single-trigger or FFT method, depending on the threshold determined by Eq. (15). For a typical analysis configuration that only identifies triggers once every second, this threshold is never exceeded, and the single-trigger method is faster even where the data quality is poor.

### 3.5. Coincidence Test

To reduce the rate of false signals, we require that a candidate event is seen with consistent parameters in all of the detectors in the network. The pipeline enforces this requirement by performing a *coincidence test* on triggers produced by the matched filter. This test is performed after triggers occurring during times affected by known instrumental or environmental artifacts have been discarded. The PyCBC pipeline requires consistency of arrival time and template parameters (masses and spins) between

different detectors. Here, we only consider a two-detector network, but the extension of this coincidence test to more than two detectors is straightforward.

For the two-detector LHO-LLO network, signals must be seen in both detectors within a time difference of 15 ms: 10 ms maximum travel time between detectors and 5 ms padding to account for timing errors. Since the same waveform should be observed in all detectors, the pipeline requires consistency of the parameters of the best-fit template between detectors. Previous searches used a metric-based coincidence test [72] that checked the consistency of the template parameters and arrival times of triggers between detectors, but did not require template parameters to be the same. The PyCBC pipeline requires an *exact-match* coincidence. The same template bank is used to filter data and produce triggers from each detector. In addition to enforcing consistent arrival times, the intrinsic parameters (masses and spins) of triggers in each of the detectors must be exactly the same. The exact-match coincidence test is useful in cases where there is no simple metric to compare gravitational waveforms, such as template waveforms for binaries with spinning neutron stars or black holes [73] or for high-mass waveforms where a stochastic template placement algorithm is used [53, 28]. As demonstrated in Section 4, the use of exact match coincidence leads to a measurable improvement in the search sensitivity, even when a metric-based coincidence test is available.

Triggers that survive the coincidence test are considered coincident events. These candidates are then ranked by the quadrature sum of the reweighted SNR in each detector; for a two-detector network, we have

$$\hat{\rho}_c = \sqrt{\hat{\rho}_1^2 + \hat{\rho}_2^2}. \quad (16)$$

The choice of coincidence test has implications for the number of single-detector triggers that must be stored. In previous searches, triggers were clustered over the entire template bank [72, 18] prior to generating coincident events. However, applying such clustering in conjunction with exact-match coincidence leads to unacceptable reductions in search sensitivity, as random noise causes the highest-SNR template to vary between detectors for quiet simulated signals. Thus, we keep all triggers from the bank before testing for coincidence.

### 3.6. Candidate Event Significance

The final step of the pipeline is to measure the false-alarm rate of the search as a function of the detection statistic,  $\hat{\rho}_c$ , and use this to assign a statistical significance to candidate events. The rate and distribution of false alarms in the search, i.e. coincident triggers due to noise, depends on the pipeline's response to unpredictable, non-Gaussian and non-stationary detector noise and must be measured empirically. The PyCBC pipeline measures the false-alarm rate using time shifts. In this section, we describe the method in detail, again restricting attention to the two detector case. Generalisations to additional detectors are relatively straightforward.



Triggers from one detector are shifted in time with respect to triggers from the second detector, then the coincidence test is re-computed to create a background data set that does not contain coincident gravitational-wave signals. Repeating this procedure many times on a sufficiently large duration of input data produces a large sample of false coincidences that are used to compute the false-alarm rate of the search as a function of the detection statistic. Under the assumptions that the times of transient noise artifacts present in the data streams are not correlated between different detectors and that gravitational-wave signals are sparse in the data set, this is a sufficiently accurate approximation of the background to support detection claims.

Our significance calculation requires that candidate events are statistically independent; however, both noise transients and signals can generate many triggers across the template bank, potentially yielding several correlated coincident events within a short time ( $\lesssim 1$  second). To generate independent candidates, the pipeline performs a final stage of clustering: if more than one coincident event occurs within a time window of fixed duration, typically 10 seconds, only the event with the highest detection statistic value is selected as a candidate. An identical clustering operation is also performed on the events in each time-shifted analysis.

Each candidate event is assigned a p-value that measures its significance. For a candidate event with detection statistic  $\hat{\rho}_c$ , its p-value  $p_b$  is the probability that there are one or more coincident noise events (false alarms) that have a detection statistic value greater than or equal to  $\hat{\rho}_c$ . We calculate p-values under the null hypothesis that *all* triggers seen are due to noise. While this hypothesis might be unrealistic in the presence of loud signals, note that we can never determine with complete certainty from gravitational-wave data alone that any given trigger is due to signal rather than noise. In order to claim detection it is necessary to show that the statistic values of events actually obtained in the search are highly improbable under such a null hypothesis: i.e. that the p-value is very small. As demonstrated in [74], including all search triggers in the background calculation results in a self-consistent significance, i.e. small p-values are assigned to random noise candidate events with the expected frequency; the procedure also does not adversely affect the efficiency of the search compared to other methods which aim to remove likely signal triggers before calculating the significance of search events.

Using the distribution of coincident events from the time shifts, we can measure how many noise background events  $n_b$  are louder than a given candidate event. We thus determine the function  $n_b(\hat{\rho}_c)$  which gives the number of background events having a higher detection-statistic value than  $\hat{\rho}_c$ . The probability that one or more noise events as loud as a candidate event with detection-statistic value  $\hat{\rho}_c^*$  occurs in the search, given the duration of observing time  $T$  and the amount of background time constructed from the time shifts  $T_b$ , is

$$p(\geq 1 \text{ above } \hat{\rho}_c^* | T, T_b)_0 = 1 - \exp \left[ \frac{-T(1 + n_b(\hat{\rho}_c^*))}{T_b} \right]. \quad (17)$$

A detailed derivation of this result is given in Appendix A.

To account for the search background noise varying across the target signal space, candidate and background events are divided into three search classes based on template length. The significance of candidate events is measured against the background from the same class. This binning method prevents loud background events in one class from suppressing candidates in another class. For each candidate event we compute the p-value  $p_b^A$  inside the class  $A$ ,  $p_b^A(\hat{\rho}_c) = 1 - \exp[-T(1 + n_b^A(\hat{\rho}_c))/T_b]$ , where  $n_b^A(\hat{\rho}_c)$  is the number of noise background events in the class  $A$  above the candidate event's re-weighted SNR value  $\hat{\rho}_c$ . To account for having searched multiple classes which could all give rise to false alarms, the significance is decreased by a trials factor equal to the number of classes  $n_C$  [63]; the final significance of a candidate found in class  $A$  is given by

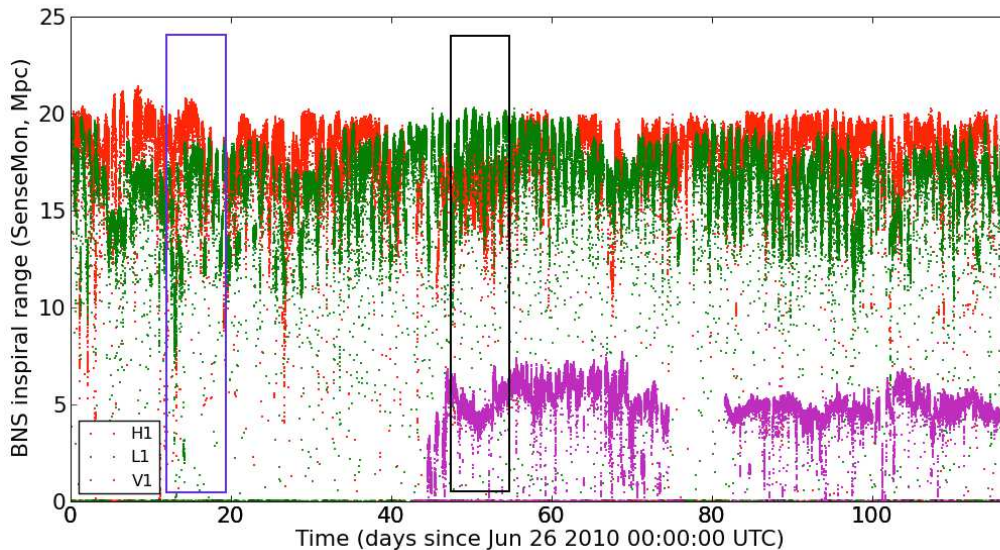
$$p_b(\hat{\rho}_c; A) = 1 - \exp\left[\frac{-n_C T(1 + n_b^A(\hat{\rho}_c))}{T_b}\right]. \quad (18)$$

Equivalently, we may consider the quantity  $n_C(1 + n_b^A(\hat{\rho}_c))/T_b$  as a rate of false positive events more significant than such a candidate, when summed over the search as a whole.

The observation time used in the search  $T_{\text{obs}}$  is determined by two considerations. The maximum length of the observation time is set by the requirement that the data quality of the detectors should not change significantly during the search. If the time-shifts mix data from periods of substantially different data quality (i.e. higher- or lower-than-average trigger rates), the noise background may not be correctly estimated. The minimum length of the observation time is set by the false-alarm rate necessary to claim the detection of interesting signals. The smallest false-alarm rate that the search can measure scales is achieved by performing *every* possible time shift of the two data streams. While the length of data analyzed in any given time shift will vary, the total amount of background time analyzed will equal  $T_b = T^2/\delta$ , where  $\delta$  is the time-shift interval. § Thus, the minimum false-alarm rate scales as  $\delta/T_{\text{obs}}^2$ . In a two-detector search using time shifts of 0.1 seconds, approximately fifteen days of coincident data are sufficient to measure false-alarm rates of 1 in  $2 \times 10^5$  years, corresponding to a significance of  $5 \sigma$ . This is the length of data used in the observation of GW150914 [1].

Two computational optimizations are applied when calculating the false-alarm rate of the search. The implementation of the time-shift method used does not require explicitly checking that triggers are coincident for each time shift successively. Instead, the pipeline takes the triggers from a given template and calculates the offset in their end times from a multiple of the time-shift interval. It is then possible to quickly find the pairs of triggers that are within the coincidence window. Furthermore, the number of background triggers is strongly dependent on the detection-statistic value. For Gaussian noise, the number of triggers will fall exponentially as a function of  $\hat{\rho}_c$ . At low detection-statistic values, it is not necessary to store every noise event to accurately measure the search false-alarm rate as a function of detection statistic. Instead, the pipeline is given

§ In the case where gaps between consecutive portions of data are a multiple of the time-shift interval this is exact. This is generally the case in our analyses. If gaps are not multiples of the time-shift interval, the total analyzed time will be approximately  $T_b = T^2/\delta$ , but there will be small corrections.



**Figure 4.** Sensitivity of the gravitational-wave detectors for the last part of the sixth science run for LIGO (S6D) and the third VIRGO science run (VSR3). The plot shows the volume-weighted average distance at which a 1.4, 1.4 BNS would be observed with an signal-to-noise ratio of 8 for each detector. The two rectangles indicate time intervals used for this study, corresponding to a week of data from July 2010 and a week of data from August 2010.

a threshold on  $\hat{\rho}_c$  and a *decimation* factor  $d$ . Below this threshold the pipeline stores one noise event for every  $d$  events, storing the decimation factor so that the false-alarm rate can be correctly reconstructed. This saves disk space and makes computation of the false-alarm rate at given values of the detection statistic faster.

#### 4. Comparison to Initial LIGO Pipeline

In this section, we compare the PyCBC search pipeline to the *ihope* pipeline used in the previous LIGO and Virgo searches for compact-object binaries [18]. We focus on tuning and testing the pipeline to improve the sensitivity to binary neutron star systems, although we note that use of the pipeline is not restricted to these sources. This pipeline has been used to search for binary black holes [1, 28, 3], binary neutron stars and neutron-star black-hole binaries [12] in Advanced LIGO data. Section 4.1 describes the method that we use to measure the sensitivity of this pipeline and Section 4.2 compares this sensitivity to that of the *ihope* pipeline. The comparison is performed using two weeks of data from the sixth LIGO science run [27, 33] shown in Figure 4. We demonstrate that for binary neutron stars, the PyCBC search can achieve a volume sensitivity improvement of up to 30% over the *ihope* pipeline without reducing the sensitivity to higher mass systems.

#### 4.1. Measuring Search Sensitivity

As the metric of search sensitivity, we measure the pipeline's *sensitive volume*. This is proportional to the fraction of sources that the pipeline can detect per unit time at a given false alarm rate  $\mathcal{F}$ , given by

$$V(\mathcal{F}) = \int \epsilon(\mathcal{F}; \mathbf{x}, \Lambda) \phi(\mathbf{x}, \Lambda) d\mathbf{x} d\Lambda. \quad (19)$$

Here,  $\Lambda$  are the physical parameters of a signal,  $\mathbf{x}$  is a spatial co-ordinate,  $\phi(\mathbf{x}, \Lambda)$  is the distribution of signals in the universe, and  $\epsilon$  is the efficiency of the pipeline at detecting signals with parameters  $\Lambda$  in volume  $\mathbf{x}$  and with false alarm rate  $\mathcal{F}$ .

We find the sensitive volume by adding a large number,  $N_I$ , of simulated signals to the data and measuring the pipeline's ability to identify them. If the simulated signals are drawn from the same distribution as the astrophysical distribution  $\phi$ , then the sensitive volume is

$$V(\mathcal{F}) \approx \frac{1}{N_I} \sum_{i=1}^{N_I} \Theta(\mathcal{F}|\mathcal{F}_i) \equiv \langle \Theta(\mathcal{F}) \rangle, \quad (20)$$

where  $\mathcal{F}_i$  is the false alarm rate associated to simulation  $i$  and  $\Theta(\mathcal{F}|\mathcal{F}_i)$  is a step function with  $\Theta(\mathcal{F}|\mathcal{F}_i) = 1$  if  $\mathcal{F}_i \leq \mathcal{F}$  and zero otherwise. The false alarm rate for a simulation is calculated using the most significant event within a 1 second window of the arrival time of the simulated event. If no event is found within this time, the detection statistic value is set to zero.

For this comparison, we assume an astrophysical distribution  $\phi$  in which signals are uniformly distributed in volume, and isotropic in sky location and orientation. Distributing simulations uniform in volume leads to a majority of signals being injected at large distances, where almost all will not be detected due to less than optimal sky position or orientation. For a fixed number of injections, this produces large errors in the estimate of  $V$ . Instead, we generate signals distributed uniformly in distance between  $r_{\min}$  and  $r_{\max}$  chosen such that all signals with distance  $r < r_{\min}$  will be found, even at small ( $\lesssim 10^{-3}/\text{yr}$ ) false alarm rate thresholds, and all signals with  $r > r_{\max}$  will be missed, even at large ( $\gtrsim 10^2/\text{yr}$ )  $\mathcal{F}$ . Gravitational waves from more massive systems have larger amplitudes and can be detected at greater distances than less massive systems. The amplitude of the emitted signal scales, at leading order, with the *chirp mass* of the binary  $\mathcal{M} = (m_1 m_2)^{3/5} / (m_1 + m_2)^{1/5}$ . If a binary with chirp mass  $\mathcal{M}_0$  can be detected at a distance of  $r_0$ , then a binary with chirp mass  $\mathcal{M}$  can be detected at a distance given approximately by

$$r_i = r_0 (\mathcal{M}_i / \mathcal{M}_0)^{5/6}. \quad (21)$$

Consequently, we use mass-dependent bounds  $r_{\min,i}$  and  $r_{\max,i}$ , scaled as in Eq. (21), for a simulated signal with chirp mass  $\mathcal{M}_i$ . The sky locations and orientations of the

|| At small distances, it is necessary to account for discreteness of galaxies while, at larger distances, cosmological effects become important.

1  
2  
3 *PyCBC search* 20

4 simulate population are distributed isotropically. Since the distribution of simulated  
5 signals differs from the assumed astrophysical distribution  $\phi$ , we must re-weight the  
6 contribution each simulation makes to the sensitive volume as [53]:  
7  
8

$$9 \quad V(\mathcal{F}) \approx 4\pi \frac{1}{N_I} \sum_{i=1}^{N_I} \left[ \frac{1}{3} r_{\min,i}^3 + r_i^2 \Delta r_i \Theta(\mathcal{F}|\mathcal{F}_i) \right] \equiv \langle g(\mathcal{F}) \rangle, \quad (22)$$

10  
11 where  $\Delta r_i \equiv r_{\max,i} - r_{\min,i}$ . The error on this estimate is

$$12 \quad \delta V = \sqrt{(\langle g(\mathcal{F})^2 \rangle - \langle g(\mathcal{F}) \rangle^2) / N_I}. \quad (23)$$

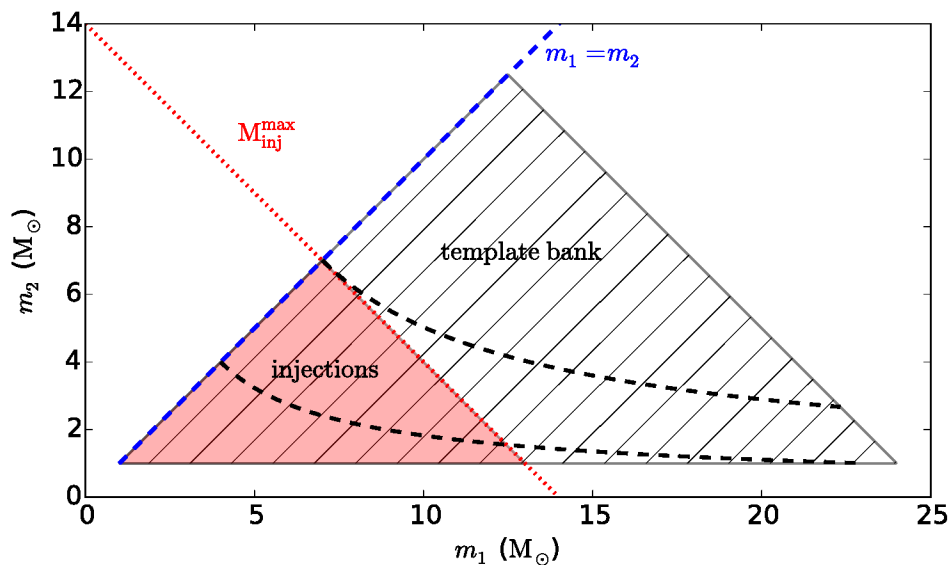
13  
14 To quantify the sensitive volume of each pipeline for this study, we select a  
15 compact-object binary population distributed uniformly over component masses with  
16  $1 \leq m_{1,2}/M_\odot \leq 7$  and  $m_1 + m_2 \leq 14 M_\odot$ . The parameters  $\mathbf{\Lambda}$  are therefore the component  
17 masses of the binary  $m_1, m_2$  and the orientation and polarization angle of the binary  
18 with respect to the detectors. For data from LIGO's sixth science run, we find that  
19  $r_{\min} = 0.5 \text{ Mpc}$  and  $r_{\max} = 30 \text{ Mpc}$  are suitable choices for a binary with component  
20 masses  $m_1 = m_2 = 1.4 M_\odot$ .  
21  
22  
23  
24  
25  
26  
27  
28  
29

#### 30 *4.2. Relative Search Sensitivity and Computational Cost*

31 Both the PyCBC and ihope [18] pipelines were used to analyze two weeks of data  
32 from LIGO's sixth science runs and the sensitive volume of each search, as well as the  
33 computational cost, was compared. Both searches use a template bank designed to  
34 search for compact-object binaries with component masses between 1 and  $24 M_\odot$ , total  
35 mass  $m_1 + m_2 \leq 25 M_\odot$  and zero spins, as shown in Fig. 5. In the literature it is  
36 generally assumed that the noise power spectral density is invariant, which is not the  
37 case for real data. In searches of initial LIGO and Virgo data, the time-dependence of the  
38 detector PSDs was addressed by recomputing the template bank on regular intervals of  
39 around an hour [18]. Since PyCBC's templates include both mass and spin parameters,  
40 regenerating the bank so often is not computationally feasible; instead, the use of a  
41 single, pre-generated bank is required, as described in Section 3.1.  
42  
43  
44  
45  
46

47 The PyCBC analysis was configured as described in detail in Sections 2 and 3. The  
48 chi-square test uses  $p = 100$  bins for templates with a chirp mass  $\mathcal{M} \leq 1.74 M_\odot$  and  
49  $p = 16$  for higher masses. To estimate the noise background of the search, an 0.2 s  
50 time-shift interval is used, and events are divided into two classes: one class contains  
51 triggers with  $\mathcal{M} \leq 1.74 M_\odot$ , a second triggers with  $1.74 < \mathcal{M}/M_\odot \leq 6.1$ , and templates  
52 outside these bins are ignored in the search.  
53  
54

55 The ihope analysis was configured as for the S6-VSR2/3 search for low-mass  
56 binaries [27]. To reduce computational cost, the ihope pipeline has *two stages* of matched  
57 filtering, where the computationally costly chi-square test is performed at the second  
58 stage on only those triggers found in coincidence (and time-shift coincidence). When  
59 large numbers of time shifts are performed, the majority of triggers appear in coincidence  
60

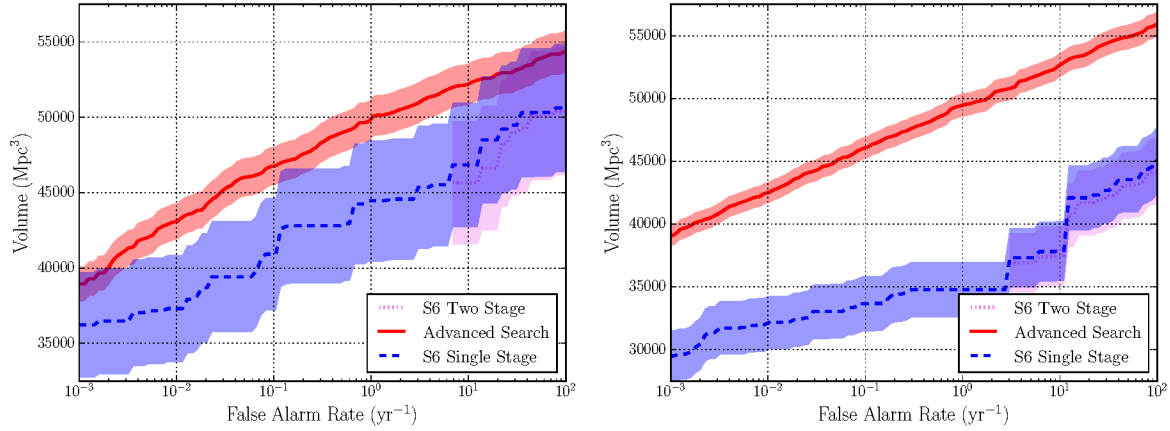


**Figure 5.** Mass-ranges for software injection, shown in the  $m_1 - m_2$  mass-plane. The template bank used to search for these injections is indicated by hatched regions and the injection set by the red shaded region. The black dashed lines show chirp masses of  $3.48 M_\odot$  and  $6.1 M_\odot$ , the boundaries between the mass bins used. Triggers from templates with chirp masses larger than  $6.1 M_\odot$  are discarded in post-processing.

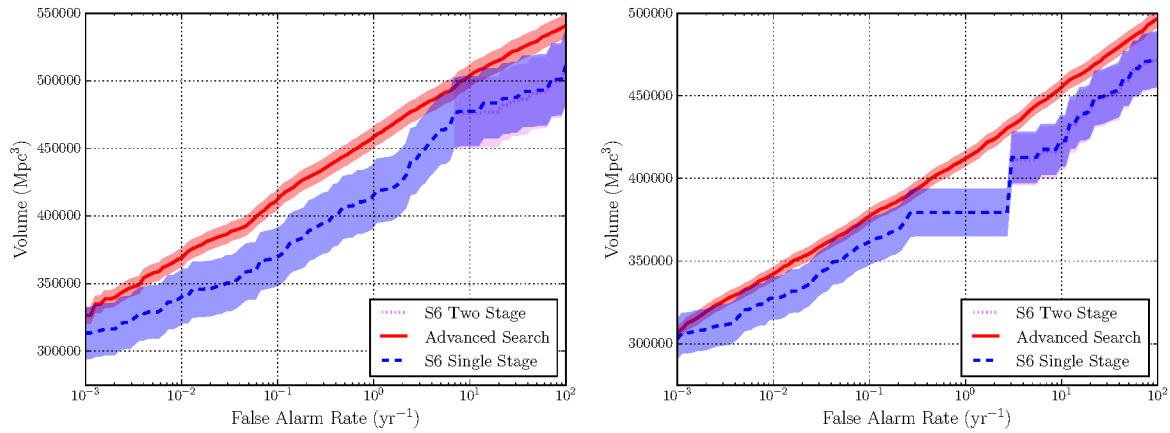
in at least one time shift and there is little benefit to the two-stage analysis. Thus, to investigate sensitivity at low false alarm rates, we also run the pipeline with a *single stage* of matched filtering where the chi-squared test is performed on every trigger.

Figures 6 and 7 compare the sensitivity of the two pipelines, using a week of data from July 2010 and a second week from August 2010. The data from July had larger fluctuations in the overall sensitivity, but relatively few noise transients while the August data had a consistent range but more glitches [33]. Using these two different weeks allows us to test the pipelines under various conditions. Figure 6 restricts to low mass binary coalescence signals ( $\mathcal{M} \leq 3.48 M_\odot$ ) while Figure 7 displays higher masses. The figures show that the sensitive volume of the new pipeline is greater than or equal to that of the ihope pipeline for both subsets of signals in both weeks of data.

At a false-alarm rate of 1 in 100 years, the PyCBC pipeline affords a sensitivity improvement for low-mass systems of 20% for the first week of data and 30% for the second week of data. The matched-filter SNR of simulated signals does not change significantly between the old and new pipelines. Furthermore, the chi-squared value, and hence re-weighted SNR, is also similar for both pipelines. The improvement in sensitivity of the PyCBC analysis is due to the reduction in the noise background of the search. Approximately 10% of the improvement in sensitive volume comes from using a fixed template bank with the exact-match coincidence test. The remaining improvement is due to reduction in the noise background because of the increased number of chi-squared bins used in the low-mass region of the search. Both of these improvements allow us to decrease the number of high significance events caused by noise transients.



**Figure 6.** The sensitive volume for low-mass binary systems, chirp mass  $\mathcal{M} \leq 3.48M_{\odot}$ , of the PyCBC and ihope searches as a function of the false alarm rate threshold. The left plot shows results from a week of data from July 2010 while the right plot uses data from August 2010. The PyCBC search (red, solid line) is more sensitive over a broad range of false alarm rates than the ihope single stage (blue, dashed line) and ihope two-stage (pink dotted line) searches. The error bars for the ihope analyses are larger than for PyCBC as fewer injections were performed. Since it uses only 100 time shifts, the two-stage ihope analysis can only determine false alarm rates as low as six per year in one week of data.



**Figure 7.** The sensitive volume for high-mass binary systems, chirp mass  $\mathcal{M} > 3.48M_{\odot}$ , of the PyCBC and ihope searches as a function of the false alarm rate threshold. The left plot shows results from a week of data from July 2010 while the right plot uses data from August 2010. The PyCBC search (red, solid line) is more sensitive over a broad range of false alarm rates than the ihope single stage (blue, dashed line) and ihope two-stage (pink dotted line) searches. The error bars for the ihope analyses are larger than for PyCBC as fewer injections were performed. Since it uses only 100 time shifts, the two-stage ihope analysis can only determine false alarm rates as low as six per year in one week of data.

The improvement is most apparent in the August data as the rate of non-Gaussian noise transients in that week is larger than in the July data. Consequently, the new pipeline's reduction of the noise background has a larger effect on the sensitivity for the August 2010 data. For high-mass systems, the PyCBC pipeline is marginally more sensitive than the *ihope* pipeline, with a 5-10% improvement at a false-alarm rate of 1 in 100 years. The improvement is less pronounced as the number of chi-squared bins was unchanged at higher masses. A discussion of tuning the pipeline to binary black hole systems can be found in Ref. [28].

Job Type	Two-Stage <i>ihope</i>	Single-Stage <i>ihope</i>	PyCBC
Template Bank Generation	13.3	13.3	4.7
Matched filtering and $\chi^2$	515.4	1431	515.5
Second Template Bank	0.1	-	-
Coincidence Test	0.3	8.3	9.9
Total	529.1	1453	530.0

**Table 1.** The computational costs of different parts of the single-stage and two-stage *ihope* search pipelines, and the new PyCBC pipeline. The costs are given in CPU days.

Table 1 shows the computational cost of the pipelines. The cost of the PyCBC search is comparable to that of the two-stage *ihope* search, and about one third of the cost of the single-stage *ihope* search. However, the two-stage search is unable to compute false-alarm rates low enough to support a detection claim and is therefore unsuitable for analysis of advanced detector data.

## 5. Conclusions

This paper presents a new pipeline to search for gravitational waves from compact binaries developed in the PyCBC framework. The pipeline includes several new developments, including: (i) gating to mitigate the effect of loud, non-Gaussian noise transients in the input data; (ii) the ability to use a single, fixed template bank for the entire analysis created using the harmonic mean of a large number of noise spectral density estimates; (iii) decoupling of the matched filtering and noise power spectral density estimation to improve the performance of the matched filter; (iv) a simpler, more efficient algorithm for identifying and clustering peaks in the matched-filter SNR time-series; (v) a computationally-efficient implementation of the chi-squared veto; (vi) the ability to set the number of bins in the chi-squared veto as a function of the parameters of the template; (vii) a stricter coincidence test that requires that a trigger is found with exactly the same template in both detectors; and (viii) improvements to the time-shift method used to measure the false-alarm rate of the search and assign a p-value to candidate events. The new pipeline provides an improvement in sensitivity over the *ihope* pipeline [18] used in searches of initial LIGO and Virgo data [27], with up to 30%



increase in sensitivity to binary neutron star sources. The PyCBC pipeline described here was used in the LIGO Scientific Collaboration and the Virgo Collaboration's search for binary black holes in the first science run of Advanced LIGO [28, 3, 12], including the identification of the binary black hole signals GW150914 [1] and GW151226 [2].

The PyCBC framework provides a modular set of tools and algorithms that can be used to create flexible, sensitive gravitational wave search pipelines. For comparison presented in Section 4, we deliberately configured the pipeline to mimic the ihope analysis as closely as possible. However, the PyCBC infrastructure can be configured in many different ways. For example, the mass range can be significantly extended [28, 3], and the choice of template waveform can be varied across the mass space: e.g. Refs. [1, 28] use post-Newtonian templates for system with a total mass less than  $4 M_{\odot}$  and templates from the Effective One Body family for higher-mass systems [58, 30, 75]. In principle, it is also possible to use the methods described here to implement matched filtering to detect gravitational waves from modeled transient systems other than compact-object binaries.

Further improvements to the astrophysical sensitivity of the PyCBC search pipeline are ongoing. These include the extension of the pipeline to multiple detectors, upgrades to the detection statistic to include signal amplitude and phase consistency between detectors and the incorporation of methods to better measure the variation of the noise event distribution across the template bank. Ongoing advancements to the computational efficiency include investigating changes to the FFT block size and input data sample rate and the implementation of hierarchical search methods in the matched filter. The FFT engine used in this pipeline can be efficiently used on graphics processing units (GPUs) and work is ongoing to develop a fast, efficient GPU implementation of this pipeline. In the longer term, the pipeline will be extended to search for binaries that exhibit spin-induced precession [76], include the effects of higher-order multipoles [62], perform a coherent search using a global network of detectors [77] and target the search to look for gravitational waves emitted at the time of short gamma-ray bursts or other astronomical transients [78, 79]. Results from these studies will be reported in future publications.

## Acknowledgments

CMB, DAB, AHN, and SAU acknowledge support from NSF awards PHY-0847611 and PHY-1404395, ACI-1443037 and a Research Corporation for Science Advancement Cottrell Scholar Award. IWH, PRS and MW acknowledge support from NSF awards PHY-0854812 and PHY-1205835. JLW acknowledges support from NSF award PHY-1506254. MSK, IWH, CDC, TD, TDC, JLW, and DK acknowledge and thank the support of the Max-Planck-Gesellschaft. MSK and HPP acknowledge support from NSERC of Canada, the Ontario Early Researcher Awards Program, the Canada Research Chairs Program, and the Canadian Institute for Advanced Research. MSK and HPP are grateful for hospitality of the Max-Planck-Institut for Gravitationsphysik.

SF acknowledges support from the Royal Society and STFC award ST/L000962/1. Computations used in this analysis were performed on the Syracuse University SUGAR cluster, supported by NSF awards PHY-1040231 and PHY-1104371, ACI-1341006 and by Syracuse University ITS, as well as the ATLAS cluster supported by the Max-Planck-Gesellschaft. We thank Soumi De and Steven Reyes for their comments on this paper.

## Appendix A. Calculation of Event Significance

In this Appendix we give the derivation of Equation (17) which gives the probability that one or more events with higher detection statistic value than a given threshold  $\hat{\rho}_c^*$  would occur due to random coincidences of noise triggers over the search duration. ¶

For a randomly chosen candidate event which is assumed to be due to noise, the probability that there are  $n^*$  or fewer background events with a higher value of  $\hat{\rho}_c^*$  is given by

$$p(n_b \leq n^* | N_e = 1, N_b)_0 = \frac{1 + n^*}{1 + N_b}, \quad (\text{A.1})$$

where  $N_b$  is the total number of background events and  $N_e$  is the number of candidate events under consideration. This result follows by comparing a random (noise) candidate event's  $\hat{\rho}_c$  value to an ordered list of background events from the time shifts. The candidate value can lie above all background events, below all background events or lie in between two background events. There are  $N_b + 1$  places where a given candidate event can lie when ranked against the list of background events. If the candidate event is due to noise then its detection statistic value is drawn from the same distribution as the time-shifted background events, therefore it is equally likely to occupy any one of these  $N_b + 1$  positions.

Now, since higher  $\hat{\rho}_c$  values correspond to smaller  $n_b$  values, the probability that one random coincident noise event lies above a threshold  $\hat{\rho}_c^*$  is

$$p(\hat{\rho}_c \geq \hat{\rho}_c^* | N_e = 1, N_b)_0 = \frac{1 + n_b(\hat{\rho}_c^*)}{1 + N_b}. \quad (\text{A.2})$$

The same count of louder background events  $n_b$  might be obtained for a slightly smaller value of  $\hat{\rho}_c$ , given that background event values are not infinitely finely spaced, thus the condition  $\hat{\rho}_c \geq \hat{\rho}_c^*$  is more restrictive than  $n_b \leq n_b(\hat{\rho}_c^*)$ , and so strictly this equation should have a  $\leq$  sign; however we will neglect this subtlety in what follows. We wish to find the probability that one or more events out of the  $N_e$  coincident events in the search is a noise event (false alarm) at or above the threshold  $\hat{\rho}_c^*$ . This is given by the complement of the probability that all events do *not* lie above this threshold, which for one event is given by  $1 - [1 + n_b(\hat{\rho}_c^*)] / [1 + N_b]$ . The probability that this is true for all candidate events follows by multiplying the individual probabilities for each of the  $N_e$  events:

$$p(\text{none above } \hat{\rho}_c^* | N_e, N_b)_0 = \left( 1 - \frac{1 + n_b(\hat{\rho}_c^*)}{1 + N_b} \right)^{N_e}. \quad (\text{A.3})$$

¶ A less detailed derivation was presented in [74].

PyCBC search

26

This step requires that candidate events are independent, which is achieved, to good approximation, by the final event clustering described in Section 3.6. Then the probability that at least one out of  $N_e$  clustered candidate events is louder than a threshold  $\hat{\rho}_c^*$  (if all candidate events are due to noise) is

$$p(\geq 1 \text{ above } \hat{\rho}_c^* | N_e, N_b)_0 = 1 - \left(1 - \frac{1 + n_b(\hat{\rho}_c^*)}{1 + N_b}\right)^{N_e}. \quad (\text{A.4})$$

In what follows we will approximate  $1 + N_b \simeq N_b$ , which is a negligible correction given that  $N_b$  is very large.

Since we do not know  $N_b$  and  $N_e$  before performing the analysis, we should treat these event counts as stochastic variables. However, since there is such a large number of background events, the statistical uncertainty on  $N_b$  is negligibly small. We expect the rate of background noise events for the duration of background time  $T_b$  analyzed to be equal to the rate of coincident events over the duration of foreground time analyzed,  $T$ :

$$\frac{N_e}{T} \approx \frac{N_b}{T_b}. \quad (\text{A.5})$$

Under the assumption that the candidate events are all due to noise, we can model  $N_e$  as a Poisson distribution with a mean of  $\langle N_e \rangle_0 = (T/T_b)N_b$ .

We wish to know the significance of obtaining a candidate with a given  $\hat{\rho}_c^*$  without restricting to any specific number of coincident events, therefore we marginalize Eq. (A.4) over  $N_e$  to obtain

$$p(\geq 1 \text{ above } \hat{\rho}_c^* | N_b)_0 = \sum_{N_e} p(\geq 1 \text{ above } \hat{\rho}_c^* | N_e, N_b)_0 p(N_e | N_b). \quad (\text{A.6})$$

Given that coincident noise events are approximated by a Poisson process that we measure using the time-shifted background events, we can find the unknown probability  $p(N_e | N_b)$ . Letting the Poisson rate of coincident noise events be  $\mu = (N_b T)/T_b$ , then the probability of obtaining  $N_e$  events is

$$p(N_e | N_b) \equiv p(N_e | \mu) = \mu^{N_e} \frac{\exp(-\mu)}{N_e!}. \quad (\text{A.7})$$

Substituting into Eq. (A.6) we obtain

$$p(\geq 1 \text{ above } \hat{\rho}_c^* | N_b)_0 = \sum_{N_e} \left\{ 1 - \left[ 1 - \frac{1 + n_b(\hat{\rho}_c^*)}{N_b} \right]^{N_e} \right\} \mu^{N_e} \frac{\exp(-\mu)}{N_e!}. \quad (\text{A.8})$$

Since the sum of a Poisson distribution over all possible event counts  $\sum_{N_e} \mu^{N_e} \frac{\exp(-\mu)}{N_e!}$  is unity, this simplifies to

$$p(\geq 1 \text{ above } \hat{\rho}_c^* | N_b)_0 = 1 - \sum_{N_e} \left( \mu \left[ 1 - \frac{1 + n_b(\hat{\rho}_c^*)}{N_b} \right] \right)^{N_e} \frac{\exp(-\mu)}{N_e!}. \quad (\text{A.9})$$

Next, we multiply inside the summation by  $\exp[-\mu(1 - \frac{1+n_b}{N_b})] \exp[\mu(1 - \frac{1+n_b}{N_b})]$  (equivalent to multiplication by unity), to rewrite Eq. (A.9) as:

$$p(\geq 1 \text{ above } \hat{\rho}_c^* | N_b)_0 = 1 - \sum_{N_e} \left( \mu \left[ 1 - \frac{1 + n_b(\hat{\rho}_c^*)}{N_b} \right] \right)^{N_e} \times \frac{\exp \left[ -\mu \left( 1 - \left( \frac{1+n_b(\hat{\rho}_c^*)}{N_b} \right) \right) \right]}{N_e!} \exp \left[ \frac{-\mu(1 + n_b(\hat{\rho}_c^*))}{N_b} \right]. \quad (\text{A.10})$$

Setting  $\hat{\mu}$  equal to  $\mu[1 - (1 + n_b)/N_b]$ , we again identify a sum of the Poisson probability over all possible counts:

$$p(\geq 1 \text{ above } \hat{\rho}_c^* | N_b)_0 = 1 - \sum_{N_e} \hat{\mu}^{N_e} \frac{\exp(-\hat{\mu})}{N_e!} \exp \left[ \frac{-\mu(1 + n_b(\hat{\rho}_c^*))}{N_b} \right], \quad (\text{A.11})$$

All but the last term in the sum total to one and we can re-write this using the Poisson rate  $\mu = T(N_b/T_b)$ , giving

$$p(\geq 1 \text{ above } \hat{\rho}_c^* | T, T_b)_0 = 1 - \exp \left[ \frac{-T(1 + n_b(\hat{\rho}_c^*))}{T_b} \right], \quad (\text{A.12})$$

which reproduces Eq. (17) in the main text.

## References

- [1] Abbott B P *et al.* (Virgo, LIGO Scientific) 2016 *Phys. Rev. Lett.* **116** 061102 (*Preprint* 1602.03837)
- [2] Abbott B P *et al.* (Virgo, LIGO Scientific) 2016 *Phys. Rev. Lett.* **116** 241103 (*Preprint* 1606.04855)
- [3] Abbott B P *et al.* (Virgo, LIGO Scientific) 2016 (*Preprint* 1606.04856)
- [4] Abbott B *et al.* (LIGO Scientific) 2009 *Rept.Prog.Phys.* **72** 076901 (*Preprint* 0711.3041)
- [5] Abbott B P *et al.* (Virgo, LIGO Scientific) 2016 *Phys. Rev. Lett.* **116** 131103 (*Preprint* 1602.03838)
- [6] Accadia T *et al.* (VIRGO) 2012 *JINST* **7** P03012
- [7] Acernese F (Virgo) 2015 *J.Phys.Conf.Ser.* **610** 012014
- [8] Akutsu T (KAGRA) 2015 *J.Phys.Conf.Ser.* **610** 012016
- [9] Abbott B P *et al.* (Virgo, LIGO Scientific) 2016 (*Preprint* 1602.03842)
- [10] Abadie J *et al.* (LIGO Scientific, VIRGO) 2010 *Class.Quant.Grav.* **27** 173001 (*Preprint* 1003.2480)
- [11] Aasi J *et al.* (LIGO Scientific, VIRGO) 2013 (*Preprint* 1304.0670)
- [12] Abbott B P *et al.* (Virgo, LIGO Scientific) 2016 (*Preprint* 1607.07456)
- [13] Nitz A H, Harry I W, Willis J L, Biver C M, Brown D A, Pekowsky L P, Dal Canton T, Williamson A R, Dent T, Capano C D, Massinger T T, Lenon A K, Nielsen A and Cabero M 2016 PyCBC Software <https://github.com/ligo-cbc/pycbc>
- [14] Brown D A *et al.* 2004 *Class. Quant. Grav.* **21** S1625–S1633 (*Preprint* arXiv:0705.1572[gr-qc])
- [15] Brown D A (LIGO) 2005 *Class. Quant. Grav.* **22** S1097–S1108 (*Preprint* gr-qc/0505102)
- [16] Allen B 2005 *Phys.Rev.* **D71** 062001 (*Preprint* gr-qc/0405045)
- [17] Allen B, Anderson W G, Brady P R, Brown D A and Creighton J D 2012 *Phys.Rev.* **D85** 122006 (*Preprint* gr-qc/0509116)
- [18] Babak S, Biswas R, Brady P, Brown D, Cannon K *et al.* 2013 *Phys.Rev.* **D87** 024033 (*Preprint* 1208.3491)

- [19] Abbott B *et al.* (LIGO Scientific) 2004 *Phys. Rev.* **D69** 122001 (*Preprint gr-qc/0308069*)
- [20] Abbott B *et al.* (LIGO Scientific) 2005 *Phys. Rev.* **D72** 082001 (*Preprint gr-qc/0505041*)
- [21] Abbott B *et al.* (LIGO Scientific) 2006 *Phys. Rev.* **D73** 062001 (*Preprint gr-qc/0509129*)
- [22] Abbott B *et al.* (LIGO Scientific) 2008 *Phys. Rev.* **D77** 062002 (*Preprint 0704.3368*)
- [23] Abbott B *et al.* (LIGO Scientific) 2008 *Phys. Rev.* **D78** 042002 (*Preprint 0712.2050*)
- [24] Abbott B P *et al.* (LIGO Scientific) 2009 *Phys. Rev.* **D79** 122001 (*Preprint 0901.0302*)
- [25] Abbott B P *et al.* (LIGO Scientific) 2009 *Phys. Rev.* **D80** 047101 (*Preprint 0905.3710*)
- [26] Abadie J *et al.* (LIGO Scientific) 2010 *Phys. Rev.* **D82** 102001 (*Preprint 1005.4655*)
- [27] Abadie J *et al.* (The LIGO Scientific) 2012 *Phys.Rev.* **D85** 082002
- [28] Abbott B P *et al.* (Virgo, LIGO Scientific) 2016 (*Preprint 1602.03839*)
- [29] Blanchet L 2014 *Living Rev.Rel.* **17** 2 (*Preprint 1310.1528*)
- [30] Taracchini A, Buonanno A, Pan Y, Hinderer T, Boyle M *et al.* 2014 *Phys.Rev.* **D89** 061502 (*Preprint 1311.2544*)
- [31] Wainstein L A and Zubakov V D 1962 *Extraction of signals from noise* (Englewood Cliffs, NJ: Prentice-Hall)
- [32] Cutler C, Apostolatos T A, Bildsten L, Finn L S, Flanagan E E *et al.* 1993 *Phys.Rev.Lett.* **70** 2984–2987 (*Preprint astro-ph/9208005*)
- [33] Aasi J *et al.* (LIGO Scientific, VIRGO) 2015 *Class.Quant.Grav.* **32** 115012 (*Preprint 1410.7764*)
- [34] Abbott B P, Abbott R, Abbott T D *et al.* (LIGO Scientific Collaboration, Virgo Collaboration) 2016 **33** 134001 (*Preprint 1602.03844*)
- [35] Creighton J D E 1999 *Phys. Rev.* **D60** 021101 (*Preprint gr-qc/9901075*)
- [36] Siemens X, Allen B, Creighton J, Hewitson M and Landry M 2004 *Class. Quant. Grav.* **21** S1723–S1736 (*Preprint gr-qc/0405070*)
- [37] Abadie J *et al.* (LIGO Scientific) 2010 *Nucl.Instrum.Meth.* **A624** 223–240 (*Preprint 1007.3973*)
- [38] Nuttall L *et al.* 2015 *Class. Quant. Grav.* **32** 245005 (*Preprint 1508.07316*)
- [39] Slutsky J *et al.* 2010 *Class. Quant. Grav.* **27** 165023 (*Preprint 1004.0998*)
- [40] Blackburn L *et al.* 2008 *Class. Quant. Grav.* **25** 184004 [*Class. Quant. Grav.*25,184004(2008)] (*Preprint 0804.0800*)
- [41] Aasi J *et al.* (VIRGO Collaboration) 2012 *Class. Quant. Grav.* **29** 155002 (*Preprint 1203.5613*)
- [42] Sathyaprakash B and Dhurandhar S 1991 *Phys.Rev.* **D44** 3819–3834
- [43] Dhurandhar S and Sathyaprakash B 1994 *Phys.Rev.* **D49** 1707–1722
- [44] Owen B J 1996 *Phys.Rev.* **D53** 6749–6761 (*Preprint gr-qc/9511032*)
- [45] Owen B J and Sathyaprakash B 1999 *Phys.Rev.* **D60** 022002 (*Preprint gr-qc/9808076*)
- [46] Babak S, Balasubramanian R, Churches D, Cokelaer T and Sathyaprakash B 2006 *Class.Quant.Grav.* **23** 5477–5504 (*Preprint gr-qc/0604037*)
- [47] Harry I W, Allen B and Sathyaprakash B S 2009 *Phys. Rev.* **D80** 104014 (*Preprint 0908.2090*)
- [48] Brown D A, Harry I, Lundgren A and Nitz A H 2012 *Phys. Rev.* **D86**(8) 084017
- [49] Ajith P, Fotopoulos N, Privitera S, Neunzert A and Weinstein A J 2014 *Phys. Rev.* **D89** 084041 (*Preprint 1210.6666*)
- [50] Keppel D 2013 *Phys.Rev.* **D87** 124003 (*Preprint 1303.2005*)
- [51] Keppel D 2013 (*Preprint 1307.4158*)
- [52] Privitera S, Mohapatra S R P, Ajith P, Cannon K, Fotopoulos N, Frei M A, Hanna C, Weinstein A J and Whelan J T 2014 *Phys. Rev.* **D89** 024003 (*Preprint 1310.5633*)
- [53] Capano C, Harry I, Privitera S and Buonanno A 2016 (*Preprint 1602.03509*)
- [54] Buonanno A, Iyer B, Ochsner E, Pan Y and Sathyaprakash B 2009 *Phys.Rev.* **D80** 084043 (*Preprint 0907.0700*)
- [55] Brown D A, Kumar P and Nitz A H 2013 *Phys.Rev.* **D87** 082004 (*Preprint 1211.6184*)
- [56] Nitz A H, Lundgren A, Brown D A, Ochsner E, Keppel D *et al.* 2013 *Phys.Rev.* **D88** 124039 (*Preprint 1307.1757*)
- [57] Kumar P, Barkett K, Bhagwat S, Afshari N, Brown D A *et al.* 2015 (*Preprint 1507.00103*)
- [58] Buonanno A and Damour T 1999 *Phys.Rev.* **D59** 084006 (*Preprint gr-qc/9811091*)

- [59] Pan Y, Buonanno A, Buchman L T, Chu T, Kidder L E *et al.* 2010 *Phys.Rev.* **D81** 084041 (*Preprint* 0912.3466)
- [60] Damour T, Nagar A and Bernuzzi S 2013 *Phys.Rev.* **D87** 084035 (*Preprint* 1212.4357)
- [61] Damour T and Nagar A 2014 *Phys.Rev.* **D90** 044018 (*Preprint* 1406.6913)
- [62] Capano C, Pan Y and Buonanno A 2013 (*Preprint* 1311.1286)
- [63] Lyons L 2008 *Ann. Appl. Stat.* **2** 887–915
- [64] Harry I W, Nitz A H, Brown D A, Lundgren A P, Ochsner E and Keppel D 2014 *Phys. Rev.* **D89** 024010 (*Preprint* 1307.3562)
- [65] Kehl Marcel S 2014 *Comparison of Fixed and Regenerated Template Banks for Compact Binary Coalescence Searches with advanced LIGO* Master’s thesis University of Toronto
- [66] Canton T D, Bhagwat S, Dhurandhar S and Lundgren A 2014 *Class.Quant.Grav.* **31** 015016 (*Preprint* 1304.0008)
- [67] Chatterji S, Blackburn L, Martin G and Katsavounidis E 2004 *Class. Quant. Grav.* **21** S1809–S1818 (*Preprint* gr-qc/0412119)
- [68] Robinet F 2015 <https://tds.ego-gw.it/ql/?c=10651> URL <https://tds.ego-gw.it/ql/?c=10651>
- [69] Brown D A 2004 *Searching for gravitational radiation from binary black hole MACHOs in the galactic halo* Ph.D. thesis Wisconsin U., Milwaukee (*Preprint* 0705.1514) URL <https://inspirehep.net/record/673638/files/arXiv:0705.1514.pdf>
- [70] Frigo M and Johnson S G 2005 *Proceedings of the IEEE* **93** 216–231 special issue on “Program Generation, Optimization, and Platform Adaptation”
- [71] Allen B *et al.* 1999 *Phys. Rev. Lett.* **83** 1498 (*Preprint* gr-qc/9903108)
- [72] Robinson C, Sathyaprakash B and Sengupta A S 2008 *Phys.Rev.* **D78** 062002 (*Preprint* 0804.4816)
- [73] Dal Canton T *et al.* 2014 *Phys. Rev.* **D90** 082004 (*Preprint* 1405.6731)
- [74] Capano C, Dent T, Hu Y M, Hendry M, Messenger C and Veitch J 2016 (*Preprint* 1601.00130)
- [75] Pürrer M 2016 *Phys. Rev. D* **93**(6) 064041 (*Preprint* 1512.02248) URL <http://link.aps.org/doi/10.1103/PhysRevD.93.064041>
- [76] Harry I, Privitera S, Boh A and Buonanno A 2016 *Phys. Rev.* **D94** 024012 (*Preprint* 1603.02444)
- [77] Macleod D, Harry I W and Fairhurst S 2016 *Phys. Rev.* **D93** 064004 (*Preprint* 1509.03426)
- [78] Harry I W and Fairhurst S 2011 *Phys. Rev.* **D83** 084002 (*Preprint* 1012.4939)
- [79] Williamson A, Biwer C, Fairhurst S, Harry I, Macdonald E, Macleod D and Predoi V 2014 *Phys. Rev.* **D90** 122004 (*Preprint* 1410.6042)