

Acta Crystallographica Section E

Structure Reports

Online

ISSN 1600-5368

4-Amino-2-hydroxybenzohydrazide

 Hadi Kargar,^{a*} Reza Kia^{b‡} and Muhammad Nawaz Tahir^{c*}
^aDepartment of Chemistry, Payame Noor University, PO Box 19395-3697 Tehran, I.R. of IRAN, ^bDepartment of Chemistry, Science and Research Branch, Islamic Azad University, Tehran, Iran, and ^cDepartment of Physics, University of Sargodha, Punjab, Pakistan

Correspondence e-mail: h.kargar@pnu.ac.ir, dmntahir_uos@yahoo.com

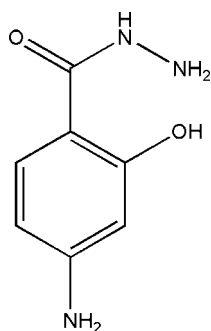
Received 3 June 2012; accepted 9 June 2012

 Key indicators: single-crystal X-ray study; $T = 291$ K; mean $\sigma(\text{C}-\text{C}) = 0.002$ Å; R factor = 0.045; wR factor = 0.133; data-to-parameter ratio = 15.4.

The asymmetric unit of the title compound, $\text{C}_7\text{H}_9\text{N}_3\text{O}_2$, comprises two crystallographically independent molecules (A and B). In each molecule there is an intramolecular $\text{O}-\text{H}\cdots\text{O}$ hydrogen bond making an $S(6)$ ring motif. In the crystal, a pair of $\text{N}-\text{H}\cdots\text{N}$ hydrogen bonds link the two molecules (A and B) into a dimer with an $R_2^2(6)$ ring motif. The B molecules are linked *via* pairs of $\text{N}-\text{H}\cdots\text{O}$ hydrogen bonds, forming inversion dimers with an $R_2^2(10)$ ring motif. The molecules are further linked *via* other $\text{N}-\text{H}\cdots\text{O}$ hydrogen bonds, forming undulating two-dimensional networks lying parallel to the bc plane. These networks are finally linked *via* $\text{N}-\text{H}\cdots\text{O}$ hydrogen bonds, forming a three-dimensional structure.

Related literature

For background to Schiff bases derived from benzohydrazide, see: Xu (2012); Bakir & Green (2002). For hydrogen-bond motifs, see: Bernstein *et al.* (1995). For standard bond lengths, see: Allen *et al.* (1987).


[‡] Present address: Structural Dynamics of (Bio)Chemical Systems, Max Planck Institute for Biophysical Chemistry, Am Fassberg 11, 37077 Göttingen, Germany.

Experimental

Crystal data

$\text{C}_7\text{H}_9\text{N}_3\text{O}_2$
 $M_r = 167.17$
 Monoclinic, $P2_1/c$
 $a = 5.6424$ (3) Å
 $b = 18.3221$ (12) Å
 $c = 14.7164$ (9) Å
 $\beta = 94.087$ (3)°
 $V = 1517.52$ (16) Å³
 $Z = 8$
 Mo $K\alpha$ radiation
 $\mu = 0.11$ mm⁻¹
 $T = 291$ K
 $0.32 \times 0.16 \times 0.14$ mm

Data collection

Bruker SMART APEXII CCD
 area-detector diffractometer
 Absorption correction: multi-scan
 (SADABS; Bruker, 2005)
 $T_{\min} = 0.965$, $T_{\max} = 0.985$
 12530 measured reflections
 3366 independent reflections
 2092 reflections with $I > 2\sigma(I)$
 $R_{\text{int}} = 0.027$

Refinement

$R[F^2 > 2\sigma(F^2)] = 0.045$
 $wR(F^2) = 0.133$
 $S = 1.01$
 3366 reflections
 219 parameters
 H-atom parameters constrained
 $\Delta\rho_{\text{max}} = 0.21$ e Å⁻³
 $\Delta\rho_{\text{min}} = -0.21$ e Å⁻³

Table 1

Hydrogen-bond geometry (Å, °).

$D-\text{H}\cdots A$	$D-\text{H}$	$\text{H}\cdots A$	$D\cdots A$	$D-\text{H}\cdots A$
$\text{O1}-\text{H1}\cdots\text{O2}$	0.82	1.80	2.5297 (18)	147
$\text{O3}-\text{H3}\cdots\text{O4}$	0.82	1.80	2.528 (2)	147
$\text{N2}-\text{H2}\cdots\text{N6}^i$	0.98	2.07	2.958 (2)	149
$\text{N5}-\text{H5}\cdots\text{N3}^{ii}$	0.99	2.04	2.934 (2)	150
$\text{N6}-\text{H1N6}\cdots\text{O4}^{iii}$	0.91	2.25	2.9424 (18)	133
$\text{N1}-\text{H1B}\cdots\text{O1}^{iv}$	0.86	2.24	3.0358 (19)	154
$\text{N4}-\text{H4B}\cdots\text{O2}^v$	0.86	2.30	2.974 (2)	136
$\text{N6}-\text{H2N6}\cdots\text{O3}^{ii}$	0.96	2.54	3.207 (2)	127

Symmetry codes: (i) $x - 1, y, z$; (ii) $x + 1, y, z$; (iii) $-x + 1, -y + 1, -z + 2$; (iv) $x, -y + \frac{3}{2}, z + \frac{1}{2}$; (v) $-x, -y + 1, -z + 1$.

Data collection: APEX2 (Bruker, 2005); cell refinement: SAINT (Bruker, 2005); data reduction: SAINT; program(s) used to solve structure: SHELXS97 (Sheldrick, 2008); program(s) used to refine structure: SHELXL97 (Sheldrick, 2008); molecular graphics: SHELXTL (Sheldrick, 2008); software used to prepare material for publication: SHELXTL and PLATON (Spek, 2009).

HK thanks PNU for financial support. MNT thanks GC University of Sargodha, Pakistan, for the research facility.

Supplementary data and figures for this paper are available from the IUCr electronic archives (Reference: SU2448).

References

- Allen, F. H., Kennard, O., Watson, D. G., Brammer, L., Orpen, A. G. & Taylor, R. (1987). *J. Chem. Soc. Perkin Trans. 2*, pp. S1–19.
 Bakir, M. & Green, O. (2002). *Acta Cryst.* **C58**, o263–o265.
 Bernstein, J., Davis, R. E., Shimoni, L. & Chang, N.-L. (1995). *Angew. Chem. Int. Ed. Engl.* **34**, 1555–1573.
 Bruker (2005). APEX2, SAINT and SADABS. Bruker AXS Inc., Madison, Wisconsin, USA.
 Sheldrick, G. M. (2008). *Acta Cryst.* **A64**, 112–122.
 Spek, A. L. (2009). *Acta Cryst.* **D65**, 148–155.
 Xu, S.-Q. (2012). *Acta Cryst.* **E68**, o1320.

supporting information

Acta Cryst. (2012). E68, o2117 [doi:10.1107/S1600536812026190]

4-Amino-2-hydroxybenzohydrazide

Hadi Kargar, Reza Kia and Muhammad Nawaz Tahir

S1. Comment

Structures of Schiff bases derived from substituted 4-aminobenzohydrazide closely related to the title compound have been reported earlier (Xu, 2012; Bakir & Green, 2002). In order to explore new Schiff base compounds of hydroxy derivatives of 4-aminobenzohydrazide, the title compound was prepared and we report herein on its crystal structure.

The asymmetric unit of the title compound, Fig. 1, comprises two crystallographically independent molecules (A and B). The bond lengths (Allen *et al.*, 1987) and angles are within normal ranges. In each molecule an intramolecular O—H···O hydrogen bond (Table 1) make an $S(6)$ ring motif (Bernstein *et al.*, 1995).

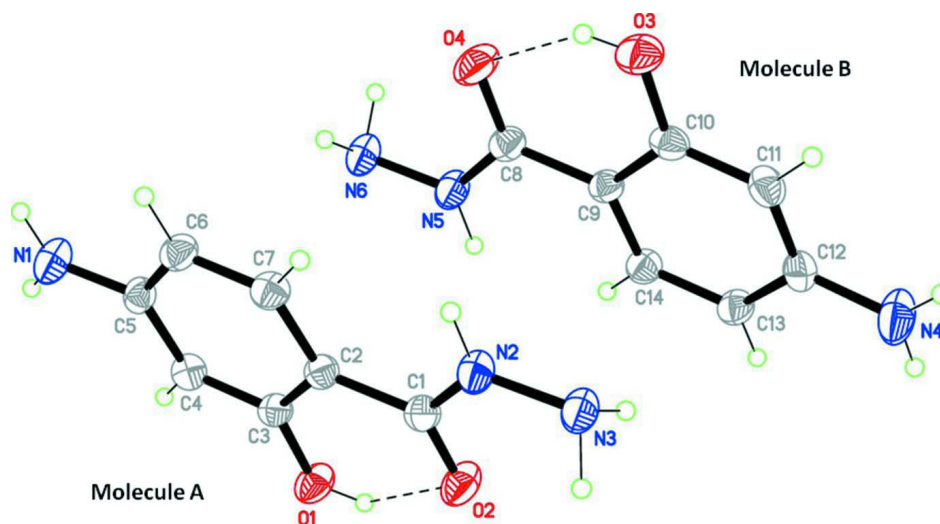
In the crystal, there are number of N—H···N and N—H···O hydrogen bonds linking the molecules (Table 1). A pair of N—H···N hydrogen bonds link the two molecules (A and B) to form dimers with an $R^2_2(6)$ ring motif. The B molecules are linked via pairs of N—H···O hydrogen bonds to form inversion dimers with an $R^2_2(10)$ ring motif. The molecules are further linked through other N—H···O hydrogen bonds forming undulating two-dimensional networks lying parallel to the *bc* plane. These networks are finally linked via an N—H···O hydrogen bond to form a three-dimensional structure (Fig. 2).

S2. Experimental

The title compound was synthesized by adding 1 mmol of methyl 4-amino-2-hydroxybenzoate to a solution of hydrazine hydrate (80%) (1 mmol) in methanol (30 ml). The mixture was refluxed with stirring for 30 min and after cooling to room temperature a white precipitate was filtered off and washed with diethylether and dried in air. Colourless needle-like crystals of the title compound, suitable for *X*-ray structure analysis, were recrystallized from ethanol by slow evaporation of the solvents at room temperature over several days.

S3. Refinement

The N-bound H-atoms were located in a difference Fourier map and were constrained to ride on their parent N atoms with $U_{\text{iso}}(\text{H}) = 1.2U_{\text{eq}}(\text{N})$. The OH and C-bound H atoms were included in calculated positions and treated as riding atoms: O—H = 0.82 Å, C—H = 0.93 Å, with $U_{\text{iso}}(\text{H}) = k \times U_{\text{eq}}(\text{O,C})$ where $k = 1.5$ for OH H atoms and $= 1.2$ for other H atoms.

**Figure 1**

A view of the molecular structure of the two independent molecules of the title compound, showing 40% probability displacement ellipsoids and the atomic numbering. The dashed lines shows the intramolecular O-H...O hydrogen bonds (see Table 1 for details).

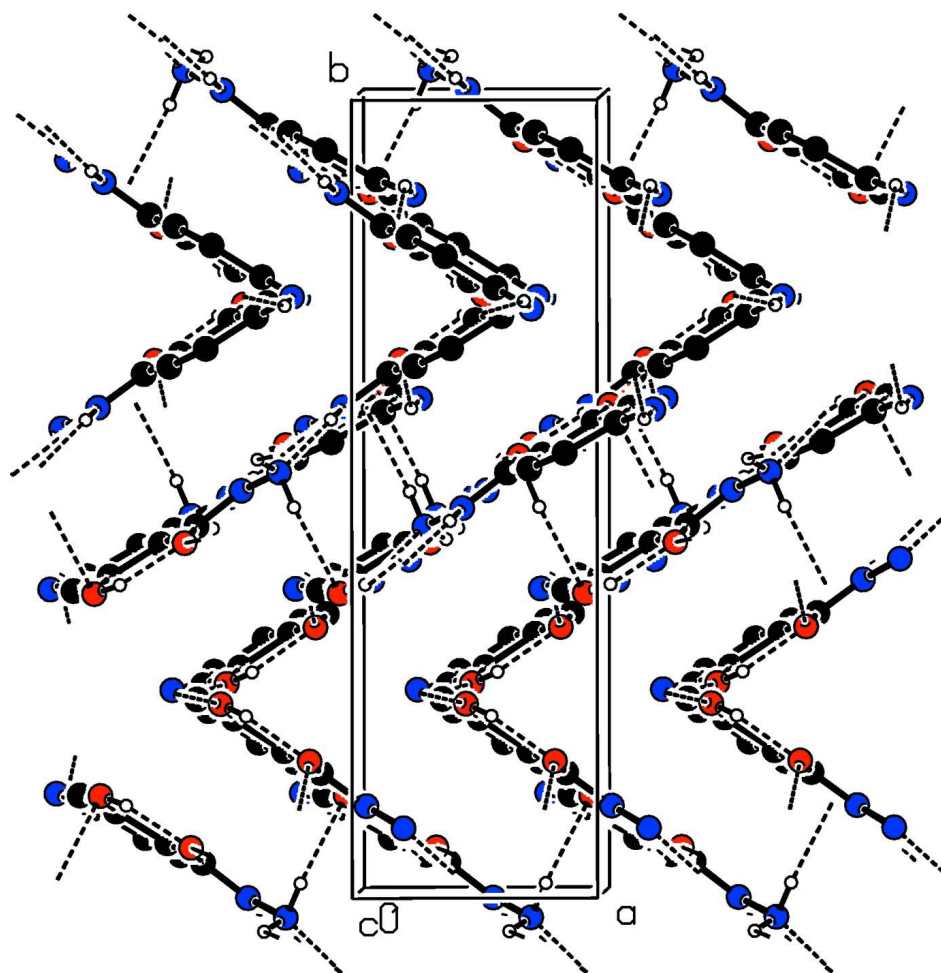


Figure 2

A view along the *c* axis of crystal packing of the title compound, showing the two-dimensional networks formed through N—H⋯O and N—H⋯N hydrogen bonds (dashed lines; see Table 1 for details). Only the H atoms involved in the interactions are shown.

4-Amino-2-hydroxybenzohydrazide

Crystal data

$C_7H_9N_3O_2$

$M_r = 167.17$

Monoclinic, $P2_1/c$

Hall symbol: $-P\ 2_1/c$

$a = 5.6424$ (3) Å

$b = 18.3221$ (12) Å

$c = 14.7164$ (9) Å

$\beta = 94.087$ (3)°

$V = 1517.52$ (16) Å³

$Z = 8$

$F(000) = 704$

$D_x = 1.463$ Mg m⁻³

Mo $K\alpha$ radiation, $\lambda = 0.71073$ Å

Cell parameters from 2540 reflections

$\theta = 2.5$ – 27.4 °

$\mu = 0.11$ mm⁻¹

$T = 291$ K

Needle, colourless

$0.32 \times 0.16 \times 0.14$ mm

Data collection

Bruker SMART APEXII CCD area-detector
diffractometer

Radiation source: fine-focus sealed tube

Graphite monochromator

φ and ω scans

Absorption correction: multi-scan

(*SADABS*; Bruker, 2005)

$T_{\min} = 0.965$, $T_{\max} = 0.985$

12530 measured reflections

3366 independent reflections

2092 reflections with $I > 2\sigma(I)$

$R_{\text{int}} = 0.027$

$\theta_{\max} = 27.2^\circ$, $\theta_{\min} = 1.8^\circ$

$h = -7 \rightarrow 7$

$k = -23 \rightarrow 23$

$l = -18 \rightarrow 18$

Refinement

Refinement on F^2

Least-squares matrix: full

$R[F^2 > 2\sigma(F^2)] = 0.045$

$wR(F^2) = 0.133$

$S = 1.01$

3366 reflections

219 parameters

0 restraints

Primary atom site location: structure-invariant

direct methods

Secondary atom site location: difference Fourier
map

Hydrogen site location: inferred from
neighbouring sites

H-atom parameters constrained

$w = 1/[\sigma^2(F_o^2) + (0.0609P)^2 + 0.2376P]$

where $P = (F_o^2 + 2F_c^2)/3$

$(\Delta/\sigma)_{\max} < 0.001$

$\Delta\rho_{\max} = 0.21 \text{ e } \text{\AA}^{-3}$

$\Delta\rho_{\min} = -0.21 \text{ e } \text{\AA}^{-3}$

Special details

Geometry. All esds (except the esd in the dihedral angle between two l.s. planes) are estimated using the full covariance matrix. The cell esds are taken into account individually in the estimation of esds in distances, angles and torsion angles; correlations between esds in cell parameters are only used when they are defined by crystal symmetry. An approximate (isotropic) treatment of cell esds is used for estimating esds involving l.s. planes.

Refinement. Refinement of F^2 against ALL reflections. The weighted R-factor wR and goodness of fit S are based on F^2 , conventional R-factors R are based on F , with F set to zero for negative F^2 . The threshold expression of $F^2 > 2\sigma(F^2)$ is used only for calculating R-factors(gt) etc. and is not relevant to the choice of reflections for refinement. R-factors based on F^2 are statistically about twice as large as those based on F , and R-factors based on ALL data will be even larger.

Fractional atomic coordinates and isotropic or equivalent isotropic displacement parameters (\AA^2)

	<i>x</i>	<i>y</i>	<i>z</i>	$U_{\text{iso}}^*/U_{\text{eq}}$
C1	0.1395 (3)	0.65395 (10)	0.73974 (11)	0.0391 (4)
C2	0.2934 (3)	0.68029 (9)	0.81762 (11)	0.0364 (4)
C3	0.4957 (3)	0.72159 (9)	0.80167 (11)	0.0369 (4)
C4	0.6503 (3)	0.74457 (10)	0.87301 (11)	0.0398 (4)
H4	0.7847	0.7712	0.8608	0.048*
C5	0.6085 (3)	0.72868 (9)	0.96218 (11)	0.0386 (4)
C6	0.4041 (3)	0.68873 (10)	0.97971 (11)	0.0430 (4)
H6	0.3718	0.6781	1.0394	0.052*
C7	0.2524 (3)	0.66546 (10)	0.90872 (11)	0.0414 (4)
H7	0.1179	0.6390	0.9213	0.050*
C8	0.3586 (3)	0.46432 (10)	0.83167 (11)	0.0411 (4)
C9	0.2091 (3)	0.44085 (9)	0.75099 (11)	0.0363 (4)
C10	0.0013 (3)	0.40061 (10)	0.76272 (11)	0.0402 (4)
C11	-0.1501 (3)	0.38160 (10)	0.68907 (12)	0.0442 (5)
H11	-0.2893	0.3564	0.6985	0.053*
C12	-0.0989 (3)	0.39927 (10)	0.60123 (12)	0.0428 (4)

C13	0.1119 (3)	0.43658 (10)	0.58807 (11)	0.0415 (4)
H13	0.1520	0.4475	0.5294	0.050*
C14	0.2596 (3)	0.45715 (10)	0.66168 (11)	0.0405 (4)
H14	0.3978	0.4827	0.6518	0.049*
N1	0.7591 (3)	0.75402 (10)	1.03293 (10)	0.0567 (5)
H1A	0.8806	0.7800	1.0218	0.068*
H1B	0.7317	0.7438	1.0883	0.068*
N2	-0.0459 (3)	0.61215 (8)	0.75474 (10)	0.0445 (4)
H2	-0.0935	0.5975	0.8151	0.053*
N3	-0.2002 (3)	0.58528 (9)	0.68260 (10)	0.0486 (4)
H1N3	-0.1141	0.5589	0.6368	0.058*
H2N3	-0.2503	0.6231	0.6408	0.058*
N4	-0.2532 (3)	0.38142 (11)	0.52828 (11)	0.0686 (6)
H4A	-0.3835	0.3590	0.5369	0.082*
H4B	-0.2195	0.3927	0.4740	0.082*
N5	0.5410 (3)	0.50862 (9)	0.81992 (9)	0.0468 (4)
H5	0.5880	0.5239	0.7595	0.056*
N6	0.6986 (3)	0.53248 (10)	0.89273 (9)	0.0519 (4)
H1N6	0.6126	0.5492	0.9381	0.062*
H2N6	0.7604	0.4892	0.9220	0.062*
O1	0.5463 (2)	0.74076 (8)	0.71656 (8)	0.0523 (4)
H1	0.4410	0.7260	0.6799	0.078*
O2	0.1813 (2)	0.66956 (8)	0.65963 (8)	0.0560 (4)
O3	-0.0582 (2)	0.37996 (8)	0.84652 (8)	0.0566 (4)
H3	0.0483	0.3916	0.8846	0.085*
O4	0.3139 (3)	0.44440 (8)	0.90981 (8)	0.0619 (4)

Atomic displacement parameters (\AA^2)

	U^{11}	U^{22}	U^{33}	U^{12}	U^{13}	U^{23}
C1	0.0420 (10)	0.0386 (10)	0.0370 (10)	0.0033 (8)	0.0057 (8)	-0.0009 (8)
C2	0.0371 (9)	0.0374 (10)	0.0347 (9)	0.0031 (8)	0.0033 (7)	-0.0009 (7)
C3	0.0398 (10)	0.0382 (10)	0.0335 (9)	0.0054 (8)	0.0086 (7)	0.0005 (7)
C4	0.0356 (9)	0.0423 (10)	0.0420 (10)	-0.0012 (8)	0.0076 (8)	-0.0012 (8)
C5	0.0393 (10)	0.0406 (10)	0.0358 (9)	0.0065 (8)	0.0012 (7)	-0.0061 (8)
C6	0.0486 (11)	0.0490 (11)	0.0319 (9)	0.0020 (9)	0.0069 (8)	0.0009 (8)
C7	0.0402 (10)	0.0440 (10)	0.0409 (10)	-0.0023 (8)	0.0085 (8)	0.0026 (8)
C8	0.0438 (10)	0.0449 (11)	0.0349 (9)	0.0046 (9)	0.0038 (8)	0.0002 (8)
C9	0.0392 (9)	0.0370 (10)	0.0328 (9)	0.0022 (8)	0.0043 (7)	0.0016 (7)
C10	0.0474 (10)	0.0355 (10)	0.0389 (10)	0.0015 (8)	0.0111 (8)	0.0040 (8)
C11	0.0444 (11)	0.0407 (11)	0.0485 (11)	-0.0104 (8)	0.0091 (9)	-0.0032 (8)
C12	0.0458 (11)	0.0386 (10)	0.0437 (10)	-0.0017 (9)	0.0018 (8)	-0.0082 (8)
C13	0.0454 (10)	0.0464 (11)	0.0333 (9)	-0.0019 (9)	0.0068 (8)	0.0013 (8)
C14	0.0385 (10)	0.0448 (10)	0.0383 (10)	-0.0038 (8)	0.0040 (8)	0.0028 (8)
N1	0.0553 (10)	0.0755 (12)	0.0390 (9)	-0.0105 (9)	0.0000 (7)	-0.0084 (8)
N2	0.0430 (9)	0.0514 (10)	0.0387 (8)	-0.0073 (7)	0.0012 (7)	-0.0050 (7)
N3	0.0503 (9)	0.0544 (10)	0.0401 (8)	-0.0057 (8)	-0.0036 (7)	-0.0062 (7)
N4	0.0645 (11)	0.0898 (14)	0.0508 (10)	-0.0334 (10)	0.0001 (9)	-0.0121 (9)

N5	0.0470 (9)	0.0578 (10)	0.0352 (8)	-0.0085 (8)	-0.0004 (7)	-0.0034 (7)
N6	0.0514 (9)	0.0648 (11)	0.0386 (8)	-0.0061 (8)	-0.0030 (7)	-0.0081 (7)
O1	0.0553 (9)	0.0687 (9)	0.0332 (7)	-0.0120 (7)	0.0064 (6)	0.0044 (6)
O2	0.0613 (9)	0.0737 (10)	0.0329 (7)	-0.0143 (7)	0.0018 (6)	0.0007 (6)
O3	0.0632 (9)	0.0657 (9)	0.0424 (7)	-0.0113 (8)	0.0128 (6)	0.0108 (7)
O4	0.0692 (10)	0.0838 (11)	0.0324 (7)	-0.0133 (8)	0.0014 (6)	0.0080 (7)

Geometric parameters (Å, °)

C1—O2	1.252 (2)	C11—C12	1.383 (2)
C1—N2	1.328 (2)	C11—H11	0.9300
C1—C2	1.469 (2)	C12—N4	1.373 (2)
C2—C7	1.403 (2)	C12—C13	1.397 (2)
C2—C3	1.403 (2)	C13—C14	1.372 (2)
C3—O1	1.3506 (19)	C13—H13	0.9300
C3—C4	1.382 (2)	C14—H14	0.9300
C4—C5	1.381 (2)	N1—H1A	0.8600
C4—H4	0.9300	N1—H1B	0.8600
C5—N1	1.377 (2)	N2—N3	1.4125 (19)
C5—C6	1.406 (2)	N2—H2	0.9837
C6—C7	1.371 (2)	N3—H1N3	0.9851
C6—H6	0.9300	N3—H2N3	0.9568
C7—H7	0.9300	N4—H4A	0.8600
C8—O4	1.249 (2)	N4—H4B	0.8600
C8—N5	1.331 (2)	N5—N6	1.4123 (19)
C8—C9	1.471 (2)	N5—H5	0.9858
C9—C14	1.397 (2)	N6—H1N6	0.9064
C9—C10	1.406 (2)	N6—H2N6	0.9561
C10—O3	1.355 (2)	O1—H1	0.8200
C10—C11	1.376 (2)	O3—H3	0.8200
O2—C1—N2	119.45 (16)	C10—C11—H11	119.4
O2—C1—C2	121.28 (16)	C12—C11—H11	119.4
N2—C1—C2	119.26 (15)	N4—C12—C11	120.81 (17)
C7—C2—C3	117.12 (15)	N4—C12—C13	120.45 (17)
C7—C2—C1	123.58 (16)	C11—C12—C13	118.74 (16)
C3—C2—C1	119.29 (15)	C14—C13—C12	120.03 (16)
O1—C3—C4	117.51 (16)	C14—C13—H13	120.0
O1—C3—C2	121.56 (15)	C12—C13—H13	120.0
C4—C3—C2	120.93 (15)	C13—C14—C9	122.08 (17)
C5—C4—C3	121.11 (17)	C13—C14—H14	119.0
C5—C4—H4	119.4	C9—C14—H14	119.0
C3—C4—H4	119.4	C5—N1—H1A	120.0
N1—C5—C4	120.65 (17)	C5—N1—H1B	120.0
N1—C5—C6	120.48 (16)	H1A—N1—H1B	120.0
C4—C5—C6	118.83 (15)	C1—N2—N3	121.79 (14)
C7—C6—C5	119.88 (16)	C1—N2—H2	125.2
C7—C6—H6	120.1	N3—N2—H2	113.0

C5—C6—H6	120.1	N2—N3—H1N3	112.2
C6—C7—C2	122.10 (17)	N2—N3—H2N3	111.6
C6—C7—H7	118.9	H1N3—N3—H2N3	93.0
C2—C7—H7	118.9	C12—N4—H4A	120.0
O4—C8—N5	120.42 (16)	C12—N4—H4B	120.0
O4—C8—C9	121.05 (17)	H4A—N4—H4B	120.0
N5—C8—C9	118.51 (15)	C8—N5—N6	122.74 (15)
C14—C9—C10	117.09 (15)	C8—N5—H5	123.3
C14—C9—C8	123.60 (16)	N6—N5—H5	113.7
C10—C9—C8	119.31 (15)	N5—N6—H1N6	108.8
O3—C10—C11	117.79 (16)	N5—N6—H2N6	105.9
O3—C10—C9	121.39 (16)	H1N6—N6—H2N6	98.4
C11—C10—C9	120.82 (15)	C3—O1—H1	109.5
C10—C11—C12	121.17 (17)	C10—O3—H3	109.5
O2—C1—C2—C7	178.86 (16)	O4—C8—C9—C10	5.5 (3)
N2—C1—C2—C7	-1.8 (3)	N5—C8—C9—C10	-173.19 (15)
O2—C1—C2—C3	-2.3 (3)	C14—C9—C10—O3	177.62 (16)
N2—C1—C2—C3	177.02 (16)	C8—C9—C10—O3	-3.2 (3)
C7—C2—C3—O1	-177.79 (15)	C14—C9—C10—C11	-3.1 (3)
C1—C2—C3—O1	3.3 (2)	C8—C9—C10—C11	176.03 (16)
C7—C2—C3—C4	1.8 (2)	O3—C10—C11—C12	-178.52 (16)
C1—C2—C3—C4	-177.12 (16)	C9—C10—C11—C12	2.2 (3)
O1—C3—C4—C5	178.53 (16)	C10—C11—C12—N4	-178.66 (17)
C2—C3—C4—C5	-1.1 (3)	C10—C11—C12—C13	0.5 (3)
C3—C4—C5—N1	-177.69 (16)	N4—C12—C13—C14	177.00 (17)
C3—C4—C5—C6	-0.3 (3)	C11—C12—C13—C14	-2.2 (3)
N1—C5—C6—C7	178.29 (16)	C12—C13—C14—C9	1.2 (3)
C4—C5—C6—C7	0.9 (3)	C10—C9—C14—C13	1.4 (3)
C5—C6—C7—C2	-0.1 (3)	C8—C9—C14—C13	-177.66 (16)
C3—C2—C7—C6	-1.2 (3)	O2—C1—N2—N3	-0.7 (3)
C1—C2—C7—C6	177.67 (16)	C2—C1—N2—N3	179.94 (15)
O4—C8—C9—C14	-175.39 (17)	O4—C8—N5—N6	3.1 (3)
N5—C8—C9—C14	5.9 (3)	C9—C8—N5—N6	-178.16 (16)

Hydrogen-bond geometry (\AA , $^\circ$)

$D-H\cdots A$	$D-H$	$H\cdots A$	$D\cdots A$	$D-H\cdots A$
O1—H1 \cdots O2	0.82	1.80	2.5297 (18)	147
O3—H3 \cdots O4	0.82	1.80	2.528 (2)	147
N2—H2 \cdots N6 ⁱ	0.98	2.07	2.958 (2)	149
N5—H5 \cdots N3 ⁱⁱ	0.99	2.04	2.934 (2)	150
N6—H1N6 \cdots O4 ⁱⁱⁱ	0.91	2.25	2.9424 (18)	133
N1—H1B \cdots O1 ^{iv}	0.86	2.24	3.0358 (19)	154
N4—H4B \cdots O2 ^v	0.86	2.30	2.974 (2)	136
N6—H2N6 \cdots O3 ⁱⁱ	0.96	2.54	3.207 (2)	127

Symmetry codes: (i) $x-1, y, z$; (ii) $x+1, y, z$; (iii) $-x+1, -y+1, -z+2$; (iv) $x, -y+3/2, z+1/2$; (v) $-x, -y+1, -z+1$.