

# Glycomic Characterization of Induced Pluripotent Stem Cells Derived from a Patient Suffering from Phosphomannomutase 2 Congenital Disorder of Glycosylation (PMM2-CDG)\*<sup>§</sup>

Christina T. Thiesler<sup>‡§c</sup>, Samanta Cajic<sup>¶c</sup>, Dirk Hoffmann<sup>‡||</sup>, Christian Thiel<sup>\*\*</sup>, Laura van Diepen<sup>‡‡</sup>, René Hennig<sup>¶§§</sup>, Malte Sgodda<sup>‡¶¶</sup>, Robert Weißmann<sup>‡‡</sup>, Udo Reichl<sup>¶</sup>, Doris Steinemann<sup>‡|||</sup>, Ulf Diekmann<sup>a</sup>, Nicolas M. B. Huber<sup>‡§</sup>, Astrid Oberbeck<sup>‡§</sup>, Tobias Cantz<sup>‡¶¶</sup>, Andreas W. Kuss<sup>‡‡</sup>, Christian Körner<sup>\*\*</sup>, Axel Schambach<sup>‡||</sup>, Erdmann Rapp<sup>¶§§</sup>, and Falk F. R. Buettner<sup>‡§b</sup>

PMM2-CDG, formerly known as congenital disorder of glycosylation-Ia (CDG-Ia), is caused by mutations in the gene encoding phosphomannomutase 2 (*PMM2*). This disease is the most frequent form of inherited CDG-diseases affecting protein N-glycosylation in human. PMM2-CDG is a multisystemic disease with severe psychomotor and mental retardation. In order to study the pathophysiology of PMM2-CDG in a human cell culture model, we generated induced pluripotent stem cells (iPSCs) from fibroblasts of a PMM2-CDG-patient (PMM2-iPSCs). Expression of pluripotency factors and *in vitro* differentia-

tion into cell types of the three germ layers was unaffected in the analyzed clone PMM2-iPSC-C3 compared with nondiseased human pluripotent stem cells (hPSCs), revealing no broader influence of the PMM2 mutation on pluripotency in cell culture. Analysis of gene expression by deep-sequencing did not show obvious differences in the transcriptome between PMM2-iPSC-C3 and nondiseased hPSCs. By multiplexed capillary gel electrophoresis coupled to laser induced fluorescence detection (xCGE-LIF) we could show that PMM2-iPSC-C3 exhibit the common hPSC N-glycosylation pattern with high-mannose-type N-glycans as the predominant species. However, phosphomannomutase activity of PMM2-iPSC-C3 was 27% compared with control hPSCs and lectin staining revealed an overall reduced protein glycosylation. In addition, quantitative assessment of N-glycosylation by xCGE-LIF showed an up to 40% reduction of high-mannose-type N-glycans in PMM2-iPSC-C3, which was in concordance to the observed reduction of the Glc3Man9GlcNAc2 lipid-linked oligosaccharide compared with control hPSCs. Thus we could model the PMM2-CDG disease phenotype of hypoglycosylation with patient derived iPSCs *in vitro*. Knock-down of *PMM2* by shRNA in PMM2-iPSC-C3 led to a residual activity of 5% and to a further reduction of the level of N-glycosylation. Taken together we have developed human stem cell-based cell culture models with stepwise reduced levels of N-glycosylation now enabling to study the role of N-glycosylation during early human development. *Molecular & Cellular Proteomics* 15: 10.1074/mcp.M115.054122, 1435–1452, 2016.

From the ‡REBIRTH-Cluster of Excellence, Hannover Medical School, 30625 Hannover, Germany; §Institute for Cellular Chemistry, Hannover Medical School, 30625 Hannover, Germany; ¶Max Planck Institute for Dynamics of Complex Technical Systems, 39106 Magdeburg, Germany; ||Institute of Experimental Hematology, Hannover Medical School, 30625 Hannover, Germany; \*\*Center for Child and Adolescent Medicine, Department Kinderheilkunde I, 69120 Heidelberg, Germany; ‡‡Department of Human Genetics, University Medicine Greifswald and Interfaculty Institute for Genetics and Functional Genomics, Ernst-Moritz-Arndt University, 17475 Greifswald, Germany; §§glyXera GmbH, 39120 Magdeburg, Germany; ¶¶Translational Hepatology and Stem Cell Biology, Dept. of Gastroenterology, Hepatology, and Endocrinology, Hannover Medical School, 30625 Hannover, Germany; ||||Institute of Human Genetics, Hannover Medical School, 30625 Hannover, Germany; <sup>a</sup>Institute of Clinical Biochemistry, Hannover Medical School, Hannover, Germany

Received July 30, 2015, and in revised form, December 15, 2015  
 Published, January 19, 2016, MCP Papers in Press, DOI 10.1074/mcp.M115.054122

✎ Author's Choice—Final version free via Creative Commons CC-BY license.

Author contributions: F.F.B. designed research; C.T.T., S.C., D.H., C.T., L.v.D., R.H., M.S., U.D., N.M.H., and A.O. performed research; S.C., C.T., L.v.D., R.H., U.R., D.S., T.C., A.W.K., C.K., A.S., and E.R. contributed new reagents or analytic tools; C.T.T., S.C., C.T., L.v.D., R.H., R.W., D.S., E.R., and F.F.B. analyzed data; C.T.T. and F.F.B. wrote the paper.

Congenital disorder of glycosylation type Ia (CDG-Ia<sup>1</sup>, recently named PMM2-CDG) is an inherited autosomal recessive

<sup>1</sup> The abbreviations used are: CDG, congenital disorder of glycosylation; Array-CGH, array comparative genomic hybridization; bFGF,

sive rare disease caused by mutations in the phosphomannomutase 2 (*PMM2*) gene (1) and affected more than 800 patients worldwide in 2009 (calculated frequency 1:20,000 to 1:50,000 births) (2, 3). The majority of compound heterozygous PMM2-CDG patients carry the mutations 422 G>A and 357 C>A in the *PMM2* gene leading to Arg<sup>141</sup>His and Phe<sup>119</sup>Leu mutations in the respective proteins (4). These patients show a broad clinical picture affecting nearly all organ systems and an overall mortality of 20% during childhood. Typical pediatric symptoms include failure to thrive, hypotonia, hepatic dysfunction, and dysmorphic features like inverted nipples and subcutaneous fat pads. After infancy patients show psychomotor and mental retardation (5, 6). *PMM2* catalyzes the conversion of mannose-6-phosphate (Man-6-P) to mannose-1-phosphate (Man-1-P), which is essential to synthesize GDP-mannose (GDP-Man). The activated donor sugar GDP-Man is required for the synthesis of the lipid-linked oligosaccharide (LLO), the glycan donor for N-glycosylation (7). A marked reduction in *PMM2* activity has been shown in fibroblasts and leukocytes of PMM2-CDG patients and was identified as the cause of PMM2-CDG (1, 8).

Fibroblasts derived from PMM2-CDG patients that were cultured under low glucose conditions reflected the expected phenotype and accumulated precursors of the LLO, which are poor substrates for the oligosaccharyltransferase complex. Raising the glucose level to physiological conditions can lead to abundant synthesis of LLO without hypoglycosylation. However, high levels of Man-6-P in PMM2-CDG function as activator for cleavage of LLO leading to futile cycling of the LLO pathway (9). In order to study PMM2-CDG under more complex physiological conditions, different animal models have been developed. Morpholino-mediated knock-down of *pmm2* in *Xenopus laevis* embryos caused underglycosylation and developmental defects (10). Similarly, in a morpholino-based PMM2-CDG model of zebrafish the developmental abnormalities seen in PMM2-CDG patients could be partially imitated. Furthermore, N-glycosylation and LLO levels were

reduced in morphant zebrafish embryos and Man-6-P was proven to induce cleavage of the LLO (11). Targeted disruption of the *Pmm2* gene in mice resulted in embryonic lethality around day 3.5 suggesting an essential role of *PMM2* for early embryonic development (12). Similar results were observed for a homozygous Arg<sup>137</sup>His (corresponding to Arg<sup>141</sup>His in humans) mutation of *Pmm2* in mice (13). In a hypomorphic *Pmm2* mouse model Arg<sup>137</sup>His and Phe<sup>118</sup>Leu mutations, resembling the predominant human mutations, embryos survived to embryonic day 9.5 and had a reduced staining with the lectin wheat germ agglutinin (WGA) that binds to sialic acids and N-acetylglucosamine residues. Interestingly, embryonic lethality of mutant embryos could be rescued by feeding mannose to pregnant mice and the offspring survived beyond weaning. Under mannose supplementation histological examination revealed no abnormal morphology of mutant embryos on embryonic day 16.5 and they displayed a normal WGA staining (13). These findings emphasize the particular meaning of glycosylation for embryonic development, which can be studied *in vitro* in a less complex environment by using embryonic stem cells (ESCs) (14). The seminal work of Takahashi and Yamanaka, showing the generation of induced pluripotent stem cells (iPSCs) from differentiated adult fibroblasts (15) has enabled the generation of patient-specific iPSCs for disease modeling. iPSCs and their differentiated progeny present an important tool for the study of molecular mechanisms and cellular pathways resulting in disease manifestation. Furthermore, disease-specific iPSCs display an unlimited cell source for the generation of differentiated progeny as well as for the development and testing of new therapeutic compounds *in vitro* (16, 17).

In order to take advantage of these possibilities, we generated iPSCs as a disease model for PMM2-CDG by reprogramming fibroblasts from a PMM2-CDG patient (PMM2-iPSCs). The PMM2-iPSCs were characterized in depth by glycomics and we could clearly show reduction of high-mannose-type N-glycans as early as on the stem cell level. The development and characterization of iPSC models for PMM2-CDG offer the possibility to dissect the effects of (aberrant) glycosylation in early human development in future.

#### EXPERIMENTAL PROCEDURES

**Fibroblast Culture**—Fibroblasts (PMM2-CDG patient derived fibroblasts) were obtained from the NIGMS Human Genetic Cell Repository at the Coriell Institute for Medical Research (GM20942), Camden, NJ; human embryonic fibroblasts (huEFs) for use as feeder cells: ATCC, Manassas, VA (CCD919); mouse embryonic fibroblasts (MEFs) for use as feeder cells: EmbryoMax<sup>®</sup> PMEF-P3, strain CF-1, Millipore, Billerica, MA) were cultured on 0.1% [w/v] gelatin (Sigma-Aldrich, St. Louis, MO) coated culture flasks in high glucose DMEM medium, supplemented with 10% [v/v] FCS, 1% [v/v] MEM Nonessential Amino Acids, and 0.05% [v/v] GlutaMax<sup>™</sup> (all from Live Technologies, Carlsbad, CA) at 37 °C, 5% CO<sub>2</sub> and 85% relative humidity. Fibroblasts intended for use as feeder cells were irradiated (3000 cGy).

basic fibroblast growth factor; CBiPSC2, human cord blood derived induced pluripotent stem cell clone 2; EGF, epidermal growth factor; ES03, human embryonic stem cell line ES03 (HES-3); GFP, green fluorescent protein; Glu-1,6-P, glucose-1,6-bisphosphate; H9, human embryonic stem cell line WA09; HCM, hepatocyte culture medium; HD2-iPSC, healthy donor derived induced pluripotent stem cell clone 2; hESC, human embryonic stem cell; (h)iPSC, (human) induced pluripotent stem cell; (h)PSC, (human) pluripotent stem cell; huEFs, human embryonic fibroblasts; IF, immunofluorescence; LLO, lipid-linked oligosaccharide; Man-1-P, mannose-1-phosphate; Man-1,6-P, mannose-1,6-bisphosphate; Man-6-P, mannose-6-phosphate; MEF, murine embryonic fibroblast; MEF-CM, murine embryonic fibroblast-conditioned medium; NPC, neural progenitor cell; *PMM2*, phosphomannomutase 2; PMM2-iPSCs, induced pluripotent stem cells reprogrammed from fibroblasts of a PMM2-CDG patient; RF, reprogramming factor; RI, Rho-associated coiled coil kinase inhibitor Y27632; xCGE-LIF, multiplexed capillary gel electrophoresis coupled to laser induced fluorescence detection.

**Stem Cell Culture**—Human embryonic stem cells (ES03: ES Cell International, National Stem Cell Bank Wisconsin, WI; H9: WA09 Wisconsin Alumni Research Foundation (Wicell Research Institute, Inc.) Madison, WI) were cultured on irradiated huEFs. Human induced pluripotent stem cells (CBiPSC2: human cord blood derived induced pluripotent stem cell clone 2, reprogrammed from cord blood derived endothelial cells (18); HD2-iPSC: healthy donor derived iPSC clone 2, reprogrammed from human skin fibroblasts (not published); PMM2-iPSC: reprogrammed from PMM2-CDG fibroblasts (this study)) were cultured on irradiated MEFs. hESCs and hiPSCs were cultured on feeder cells in stem cell medium consisting of KnockOut™ DMEM supplemented with 20% [v/v] KnockOut™ Serum Replacement, 1% [v/v] MEM Nonessential Amino Acids, 0.05% [v/v] GlutaMax™, 0.1 mM 2-mercaptoethanol (all reagents from Life Technologies) and 50 ng/ml (ES03), 10 ng/ml (CBiPSC2) or 40 ng/ml (HD2-iPSC and PMM2-iPSC) basic fibroblast growth factor (bFGF, Institute of Technical Chemistry, Leibniz University Hannover, Hannover, Germany) at 37 °C, 5% CO<sub>2</sub> and 85% relative humidity. For passaging, cells were washed with PBS and incubated for 5 min with 0.2% [w/v] Collagenase IV (Life Technologies) at 37 °C and subsequently transferred to new feeder cells.

For analyses, cells were cultivated at least three passages under feeder-free conditions on Matrigel™ (1:30–1:60) (BD Biosciences, Bedford, MA) in mTeSR™1 medium (StemCell Technologies, Grenoble, France) or murine embryonic fibroblast-conditioned medium (MEF-CM) as described previously (19). For passaging, cells were briefly washed with PBS and incubated for 7 min with 1 mg/ml [w/v] Dispase (StemCell Technologies) at 37 °C and reseeded onto new Matrigel™ coated flasks.

**Reprogramming of PMM2 Patient-derived Fibroblasts**—For reprogramming, the all in one self-inactivating lentiviral vector pRRL.PPT.SF.Oct4co.Klf4co.Sox2co.cMyc.idTom.pre carrying the four reprogramming factors (RFs) OCT4, KLF4, SOX2 and cMYC was used. RFs were codon-optimized for the human system and coexpressed with the fluorescent protein dTomato to directly monitor RF-expression. Expression is driven by the spleen focus-forming virus (SFFV) promoter that is rapidly silenced upon epigenetic cell remodeling during the reprogramming process (20). Human skin fibroblasts from a male PMM2-CDG patient (NIGMS Human Genetic Cell Repository) were cultured in fibroblast medium (low-glucose DMEM, 15% FCS, 2 mM L-glutamine, 100 units/ml penicillin, 100 µg/ml streptomycin (all from PAA, Pasching, Austria), 0.1 mM MEM Nonessential Amino Acids (Life Technologies) and 100 µM 2-mercaptoethanol (Sigma-Aldrich)) and transduced with the lentiviral reprogramming vector in the presence of 4 µg/ml protamine sulfate. Cells were first spin-inoculated at 860 × g for one hour and afterward incubated overnight. Medium was replaced daily by fibroblast medium supplemented with 50 µg/ml 2-phospho-vitamin C (pVitC) (Sigma-Aldrich) and 2 mM valproic acid (VPA, Ergenyl®, Sanofi-Aventis, Frankfurt, Germany) for the following 7 days. At day eight, cells were trypsinized and transferred to irradiated (3000 cGy) C3H MEF cells (Charles River, Sulzfeld, Germany) and cultured in iPSC medium (DMEM/F12 with GlutaMax™, 20% KnockOut™ Serum Replacement, 2 mM L-glutamine, 1% MEM Nonessential Amino Acids, 100 µM 2-mercaptoethanol (all Life Technologies), 20 ng/ml bFGF, 100 units/ml penicillin, 100 µg/ml streptomycin, 50 µg/ml pVitC and 2 mM VPA) and medium was changed daily. First colonies were manually picked at around day 20 and expanded on C3H MEFs in iPSC medium.

**Knock-down of PMM2 by RNAi**—Stable expression of shRNAs from an optimized mir-30 backbone (21) was achieved upon lentiviral transduction. PMM2-iPSC-C3 were transduced with VSV-G pseudotyped particles expressing three different PMM2-specific shRNAs or Renilla shRNA as control (supplemental Table S1) at a multiplicity of infection (MOI) of 10. For transduction, PMM2-iPSC-C3 were cul-

tured on Matrigel™ in mTeSR™1 incubated for 2 h with 10 µM Rock Inhibitor (RI) and detached by incubation with Trypsin/EDTA (TE, Life Technologies). Trypsin was inactivated by addition of fibroblast medium. Subsequently, cells were centrifuged at 500 × g for 5 min at room temperature. Fibroblast medium was removed and cells were resuspended in mTeSR™1 medium supplemented with 10 µM RI. 3 × 10<sup>4</sup> cells were transduced in single cell suspension (100 µl) with lentiviral particles in the presence of 4 µg/ml protamine sulfate for 1 h at 37 °C and 5% CO<sub>2</sub>. Afterward, virus-cells suspensions were transferred to Matrigel™ coated 21 mm wells containing 500 µl fresh mTeSR™1 with 10 µM RI. Cells were cultured for two passages. Stable GFP-positive cells (expressing the shRNA) were sorted by flow cytometry.

**Differentiation of PMM2-iPSC-C3 into the Three Germ Layers**—Differentiation into hepatic cells was performed according to a modified monolayer based protocol developed by Sgodda and coworkers (22). In brief, single cells were seeded at a density of 5 × 10<sup>4</sup> cells/cm<sup>2</sup> on Matrigel™-coated plates in mTeSR™1 medium containing 10 µM RI. After reaching confluence, differentiation was initiated by culture for 3 days in RPMI medium supplemented with 0.5 mg/ml BSA, 5% KnockOut™ Serum Replacement, 100 ng/ml Activin A (Peprotech, Hamburg, Germany) and 10 µM Ly294002 (Merck, Darmstadt, Germany). At the first day of differentiation 3 µM CHIR 99021 (Institute of Technical Chemistry) was added. In the following 4 days, cells were differentiated into definitive endoderm in hepatocyte culture medium (HCM) without EGF supplemented with 2% fatty acid free BSA (Lonza, Cologne, Germany), 10 µM SB431542 (Sigma Aldrich), 30 ng/ml FGF4 (Peprotech) and 20 ng/ml BMP2 (Peprotech). Only on day four 0.5 µg/ml sFRP-5 (R&D Systems, Heidelberg, Germany) was added. At day 9, medium was exchanged to HCM without EGF supplemented with 2% fatty acid free BSA (Lonza), 20 ng/ml HGF (Peprotech) and 10 µM SB431542. Under these conditions, cells were differentiated into hepatic cells for further 4 days and maintained till day 15.

Cardiomyogenic differentiation was performed by small molecule-based modulation of WNT signaling (23). Briefly, hPSCs cultivated on Matrigel™ in mTeSR™1 were detached with 0.5 mM EDTA in PBS and seeded as single cells on Matrigel™ in mTeSR™1 supplemented with 5 µM RI (Institute of Technical Chemistry) at a density of 1 × 10<sup>5</sup> to 2 × 10<sup>5</sup> cells/cm<sup>2</sup>. The medium was exchanged against mTeSR™1 without RI, on the following day. After reaching confluence mTeSR™1 was exchanged against RPMI (Life Technologies) supplemented with B-27® without insulin (B-27-I) (Life Technologies) and 6 µM CHIR-99021 (Selleckchem, Houston, TX). The next day, medium was exchanged against RPMI/B27-I. On day four RPMI/B-27-I media was supplemented with 5 µM IWP4 (Stemgent, Cambridge, MA). At day 6, IWP4 was removed and at day 8, media were exchanged against RPMI/B-27® with insulin (B-27+I, Life Technologies).

Using STEMdiff™ Neural Induction Medium (StemCell Technologies), hPSCs were differentiated into neural progenitor cells (NPCs) according to the manufacturer's protocol. Briefly, hPSCs were seeded as single cells on Matrigel™ in STEMdiff™ Neural Induction Medium supplemented with 10 µM RI at a density of 2.0 × 10<sup>5</sup> to 2.5 × 10<sup>5</sup> cells/cm<sup>2</sup>. This medium (without RI) was exchanged daily for 10 days.

**Immunofluorescence (IF) Microscopy**—Cells were washed with PBS and fixed with 4% [w/v] paraformaldehyde in PBS (AppliChem, Darmstadt, Germany) for 30 min followed by blocking with 2% [w/v] BSA in PBS (blocking buffer) for 1 h. All antibodies were incubated for 1 h in blocking buffer and cells were washed with PBS between each incubation step. After labeling of cell surface epitopes, cells were again fixed for 10 min with 4% [w/v] paraformaldehyde in PBS. For labeling of intracellular epitopes, cells were permeabilized and blocked in the presence of 0.1% Triton X-100. Antibodies and dilu-

tions used for IF are listed in supplemental Table S2 and S3. Nuclei were counterstained with Hoechst32258 (AppliChem). Cells were embedded into Dako fluorescence mounting medium (Agilent Technologies, Santa Clara, CA) and analyzed with a Zeiss Axiovert 200 M microscope equipped with an AxioCam MRm digital camera and Zen 2012 (blue edition) software (Zeiss, Oberkochen, Germany).

**Array Comparative Genomic Hybridization (Array-CGH)**—Array-CGH was performed using the Agilent Human Genome Microarray format 4 × 180k (Agilent Technologies), a 60-mer oligonucleotide based microarray with median overall probe spacing of about 13 KB. Labeling and hybridization of genomic DNA was performed according to the manufacturer's protocol (Agilent). Briefly, 1 μg of DNA, each was labeled by random priming using the Agilent Genomic DNA Labeling Kit Plus. After labeling sample DNA with Cy3-dUTP and reference DNA, consisting of a pool of 10 control samples with Cy5-dUTP, products were purified by Amicon Ultra 30k filters (Millipore). Sample and reference DNA were pooled and mixed with 50 μg human Cot-1 DNA (to later prevent unspecific hybridization), Agilent 10× Blocking Agent, and Agilent 2X Hybridization Buffer. This mixture was hybridized to Agilent's 4 × 180k Human Genome CGH microarray at 65 °C with 20 rpm rotation for 24 h. Washing steps were performed according to the manufacturer's protocol (Agilent Technologies). Microarray slides were scanned immediately using a microarray scanner at a resolution of 2 μm (G2505B, Agilent Technologies). For image analysis, default CGH settings of Feature Extraction Software (Agilent Technologies) were applied. Output files from Feature Extraction were subsequently imported into Agilent's CGH data analysis software, Genomic-Workbench. The Aberration Algorithm ADM2 was applied and set to 5.0 and Aberration Filters were set to: centralization threshold 6.0, at least 3 probes with mean log2 ratio of  $-/+0.2$  leading to a real resolution of around 120 KB. Copy number variations were reported according to the Database of Genomic Variants (<http://dgv.tcag.ca>).

**Total RNA Preparation**—Cells were harvested in TRIzol<sup>®</sup> (Life Technologies). RNA extraction was performed adding 200 μl chloroform (VWR International, Radnor, PA) per ml TRIzol<sup>®</sup> followed by short stirring and centrifuging for 15 min at 12,000 × g and room temperature. Ethanol (70% [v/v], (VWR International)), was added in a 1:1 ratio to the upper, aqueous phase. The following filtration steps were performed according to the NucleoSpin<sup>®</sup> RNA II Kit (Macherey-Nagel, Düren, Germany). Purified RNA was stored at  $-80$  °C.

**cDNA Synthesis**—Residual genomic DNA was digested with RQ1 RNase-free DNase (Promega, Madison, WI) for 30 min at 37 °C. The reaction was stopped applying RQ1 DNase stop solution (Promega) for 10 min at 70 °C. cDNA was synthesized with random hexamer primers (Life Technologies) and RevertAid<sup>™</sup> Premium Reverse Transcriptase (Thermo Scientific, Waltham, MA) for 10 min at 25 °C, 50 min at 42 °C and 10 min at 70 °C and stored at  $-20$  °C.

**Quantitative Real-time PCR (qPCR)**—qPCR reactions were performed in a total volume of 20 μl with a volume of cDNA corresponding to 20 or 25 ng of purified RNA, 9.5 pmol primer pair, 4 nmol dNTPs (dATP, dCTP, dTTP, dGTP), 45 nmol MgCl<sub>2</sub>, 10% [v/v] Maxima Hot Start TaqPCR buffer, 0.5 U Maxima Hot Start TaqDNA Polymerase (all Thermo Scientific), 1% [v/v] ROX reference dye and 8% [v/v] of SYBR Green Nucleic Acid Stain diluted 1:10000 (both from Life Technologies). Reactions were performed with a 7500 Fast Real-time PCR System in sealed 96-well optical reaction plates (both from Life Technologies) for 40 cycles (15 s at 90 °C, 60 s at 60 °C) after 10 min denaturation at 95 °C. Amplicon sizes were evaluated by melting-curve analysis (95 °C, 15 s, 60 °C 60 s, 95 °C, 30 s, 60 °C 15 s). Relative expression of target genes was determined by normalization to the respective housekeeping genes. Ct-values were determined automatically by the 7500 Software v2.0.5. (Relative expression of target genes was calculated by determination of  $2^{-\Delta\Delta Ct}$ -values.)

Used primer pairs (all from Sigma-Aldrich) are listed in supplemental Table S4.

**Determination of Genomic Vector Integrations**—Genomic DNA from PMM2-iPSCs was isolated using the QIAamp DNA blood kit according to the manufacturer's instructions (Qiagen, Hilden, Germany). Vector copy numbers of PMM2-iPSCs were determined by quantitative PCR using Taqman PCR kit and Step One Plus real-time PCR system (ABI, Darmstadt, Germany). Primers and Taqman probes for the vector-specific PRE and the PTBP2 intron and the reference sequence plasmid were used as described previously (24).

**Verification of Mutation Arg<sup>141</sup>His/Phe<sup>119</sup>Leu in PMM2-iPSCs**—RNA purification and cDNA synthesis of CBiPSC2 and PMM2-iPSCs was performed as described above. A DNA region of 371 bp, covering the two respective point mutations [357C>A] and [422G>A] leading to the amino acid changes Phe<sup>119</sup>Leu and Arg<sup>141</sup>His, was amplified by PCR using primers 5'-CCAGAAAATGGCTTGGTAGC-3' and 5'-CAG-TATCTCTTGTCCCATCC-3'. PCR products were separated by 1% agarose gel electrophoresis, bands were cut out, purified with the NucleoSpin<sup>®</sup> Gel and PCR Clean-up Kit (Macherey-Nagel) according to the manufacturer's instructions and sequenced (GATC Biotech, Konstanz, Germany). Data analysis was performed with the Saq-Man<sup>™</sup>-tool of the Lasergene 7<sup>®</sup> software (DNASTAR, Inc., Madison, WI).

**Deep-Sequencing**—hPSCs cultivated on Matrigel<sup>™</sup> in MEF-CM were harvested, lysed in TRIzol<sup>®</sup> (Life Technologies) and total RNA was extracted applying NucleoSpin<sup>®</sup> RNA II Kit (Macherey-Nagel). To remove rRNA the Ribo-Zero<sup>™</sup> Kit (Epicenter, Madison, WI) was used. Subsequently, 10 μg of each total RNA sample was mixed with Ambion<sup>®</sup> ERCC Spike-in Control Mixes (Life Technologies). For sequencing, RNA was prepared according to the SOLiD<sup>®</sup> Total RNA-Seq Kit (Life Technologies). Briefly, rRNA-free RNA was hydrolyzed into small fragments followed by a phosphorylation step. After adaptor-ligation and hybridization, cDNA was reverse transcribed from the purified RNA-fragments. cDNA fragments of correct length were purified by Agencourt AMPure XP bead purification (Beckman Coulters Genomics, Danvers, MA) and amplified for 12 PCR cycles in a Biometra T3 Thermocycler using barcoded primers. Size distribution and concentration of fragments was determined with an Agilent 2100 Bioanalyzer and its provided chemistry (Agilent Technologies). cDNA fragments were pooled in equimolar ratios and diluted to a concentration of 500 pM (61 pg/μl). In compliance with the E80 scale protocol provided by the manufacturer (Life Technologies), 50 μl of cDNA mixtures were spiked with a fresh oil emulsion, P1 beads, P1 and P2 chemicals in a SOLiD EZ Bead Emulsifier. Amplification of cDNA was conducted in the E80-modus of a SOLiD EZ Bead Amplifier (Life Technologies). Beads, carrying the amplified template DNA, were purified on a SOLiD EZ Bead Enricher (Life Technologies). The purified beads were put upside down onto a SOLiD 6-lane Flowchip for 1 h at 37 °C. The DNA on the Flowchip was sequenced in read length of 75 bases in a 5500xl SOLiD System.

Procession and read mapping of the run was carried out with the Lifescope software analysis tool (Life Technologies) and reference genome GRCh37/hg19. Statistical analysis was performed with R (25). Normalization and differential expression calculations were carried out using the R packages EDASeq (26) and DESeq (27), respectively.

**Determination of Phosphomannomutase Activity**—Phosphomannomutase activity was determined as the turnover rate of Man-6-P to Man-1,6-P in the presence of cofactor Glu-1,6-P. Twelve micrograms protein of cell homogenates were mixed with 1 μl [<sup>2-3</sup>H]Man-6-P in a buffer containing 50 mM Tris pH 7.5, 2 mM MgCl<sub>2</sub> and 2 mM Glu-1,6-P. Reaction mixtures were incubated for 30 min at 37 °C followed by 3 min at 95 °C to stop the reaction. Afterward, samples were put on ice and mixed with 1 μl 5% Orange G. Samples were loaded onto 3 mm

Whatman paper soaked with 80 mM pyridine buffer (adjusted to pH 5.5 with glacial acetic acid). [ $^2\text{-}^3\text{H}$ ]Man-6-P and [ $^2\text{-}^3\text{H}$ ]Man-1,6-P were separated via high voltage electrophoresis at 65 V/cm for 45 min. After drying, paper sheets were analyzed using a flatbed scanner (Trancemaster 20, Berthold) (28).

**Analysis of Lipid-linked Oligosaccharides, Incorporation of [ $^2\text{-}^3\text{H}$ ]Mannose and [ $^35\text{S}$ ]Methionine into Newly Synthesized Glycoproteins and Dol-P-Man**—Analysis of lipid-linked oligosaccharides (LLO) was performed with  $1.2 \times 10^6$  of control and patient-derived cells. For metabolic labeling 125  $\mu\text{Ci}$  [ $^2\text{-}^3\text{H}$ ]mannose or 25  $\mu\text{Ci}$  [ $^35\text{S}$ ]methionine were applied. Aliquots were used for protein determination and further procedure was conducted as described previously (28, 29).

**Lectin/Western Blots**—Cells were lysed in 20 mM Tris (Merck), 130 mM NaCl (VWR International), 1% [v/v] Nonidet P-40 (Roche, Basel, Switzerland) supplemented with the protease inhibitors Aprotinin (0.8  $\mu\text{M}$ , (Roth, Karlsruhe, Germany)), Bestatin (50  $\mu\text{M}$ , (Sigma)), Leupeptin (20  $\mu\text{M}$ , (Roche)), Pepstatin A (10  $\mu\text{M}$ , (Sigma)) and PMSF (100  $\mu\text{M}$ , (Roche)), followed by two rounds of sonication for 1 min. In between, lysates were incubated on ice for 10 min. Cell debris were separated by centrifugation for 2 min at  $13,000 \times g$  and 4  $^{\circ}\text{C}$ . Protein concentrations of the supernatant were determined with the Pierce<sup>®</sup>660 nm Protein Assay Kit (Thermo Scientific). Lysates were dissolved in Laemmli buffer (35 mM Tris pH 6.8 (Merck), 2.8% [w/v] SDS (Roth), 7% [v/v] glycerol (VWR International) and 0.005% [w/v] bromophenol blue (AppliChem)) and incubated for 5 min at 95  $^{\circ}\text{C}$  followed by 5 min on ice. Proteins were separated by 10% SDS-PAGE and blotted in a semi-dry mode with blotting buffer (48 mM Tris pH 9, 39 mM glycine) onto nitrocellulose membranes (Whatman<sup>™</sup>, Protran BA85, GE Healthcare, Little Chalfont, UK) for 1 h at 2 mA/cm<sup>2</sup>. Blots were developed according to the DIG Glycan Differentiation Kit (Roche). Briefly, after incubating in blocking solution (10x Blocking Reagent and PBS) for 30 min at RT or overnight at 4  $^{\circ}\text{C}$ , membranes were washed twice with TBS for 10 min and once with lectin binding buffer (1x TBS, 1 mM MgCl<sub>2</sub>, 1 mM MnCl<sub>2</sub>, 1 mM CaCl<sub>2</sub>, pH 7.5). Staining with DIG-labeled GNA (supplemental Table S5) was performed for 1 h at RT followed by 3 times TBS-washing for 10 min. For development with alkaline phosphatase, membranes were incubated with anti-DIG-AP 1:1000 (Roche) in TBS for 1 h followed by TBS and a short AP-Buffer (100 mM Tris pH 9.5, 100 mM NaCl) wash. Lectin binding was visualized by incubation with 0.02% [v/v] BCIP (Roth)/NBT (Sigma) in AP-Buffer.

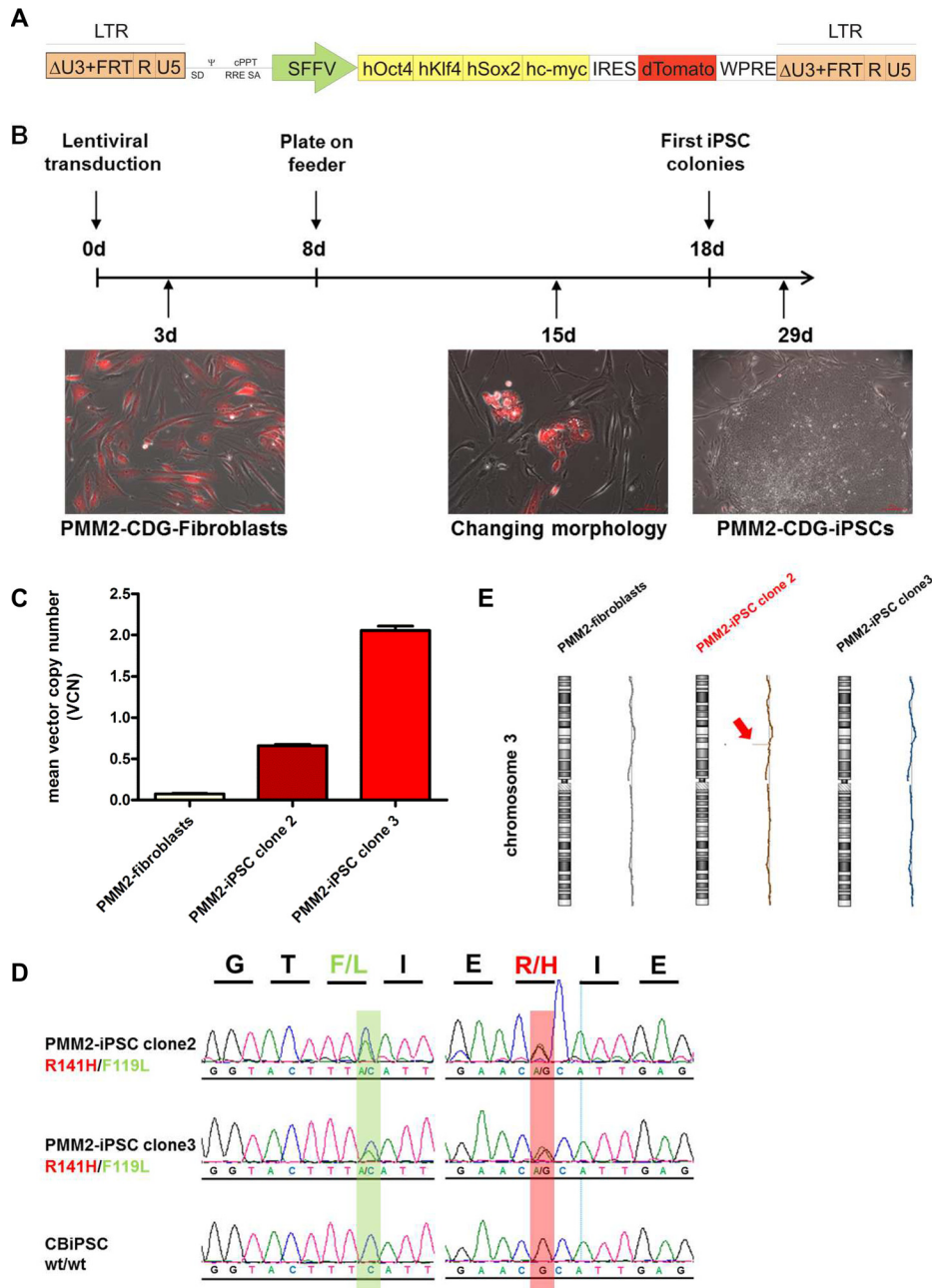
For Western blot analysis, membranes were blocked with Odyssey<sup>™</sup> Blocking Buffer (LI-COR, Lincoln, NE) for 1 h at room temperature and incubated with the respective primary antibodies (supplemental Table S2) overnight at 4  $^{\circ}\text{C}$ . Membranes were washed three times with PBS-T (PBS/0.1% TWEEN 20 (Sigma-Aldrich)) followed by one-hour incubation with the respective secondary LI-COR antibody (supplemental Table S3). Membranes were washed again 3 times with PBS-T and analyzed with an ODYSSEY<sup>®</sup>-infrared imaging system and the corresponding software Odyssey v3.0 (LI-COR).

**Flow Cytometry**—For lectin flow cytometry, cells were washed twice with PBS and incubated for 5 min at 37  $^{\circ}\text{C}$  with 0.5 mM EDTA in PBS to make a single cell suspension. For each staining, single cells were incubated with the respective lectin (supplemental Table S5) in flow buffer (0.2% BSA in PBS) for 30 min at room temperature. As a specificity control for GNA, 1 M D-mannose (Sigma Aldrich) was added to the flow buffer before lectin supplementation. After washing twice with buffer, cells were analyzed using a CyFlow ML flow cytometer (Partec GmbH, Münster, Germany) and Flowing Software 2 (Perttu Terho, Turku Centre for Biotechnology, Turku, Finland).

**Multiplexed Capillary Gel Electrophoresis with Laser Induced Fluorescence Detection (xCGE-LIF)**—Cells were lysed in RIPA-Buffer (50 mM Tris pH 8, 150 mM NaCl, 1% [v/v] Nonidet P-40 (Roche), 0.5%

[w/v] sodium desoxycholate (Sigma Aldrich) and 1% [w/v] SDS (Serva, Heidelberg, Germany)), supplemented with HALT protease inhibitor (Thermo Scientific) by pipetting up and down a few times followed by freezing at  $-80^{\circ}\text{C}$  overnight. Thawed cells were sonicated two times for 1 min followed by centrifuging for 15 min at  $13,000 \times g$  and 4  $^{\circ}\text{C}$ . Proteins were precipitated with a 4-fold excess volume of ice cold acetone at  $-20^{\circ}\text{C}$  overnight. After centrifugation, protein pellets were fully dissolved in 2% [w/v] SDS in 1x PBS (both AppliChem). Further sample preparation for xCGE-LIF-based glycoanalysis was performed as previously described (30) with minor modifications. Briefly, to remove contaminants, 200  $\mu\text{g}$  total protein of each sample was loaded onto an SDS-PAGE gel and run only for a short time (8 min). The resulting band of the still unseparated Coomassie-stained proteins was excised and then treated with peptide-N-glycosidase F (PNGase F from *Elizabethkingia meningoseptica*, BioReagent, Sigma Aldrich) to release the attached N-glycans. The enzymatically released N-glycans were extracted from the gel pieces with Milli-Q water. To obtain N-glycosylation patterns by xCGE-LIF, released N-glycans were first labeled with 8-aminopyrene-1,3,6-trisulfonic acid (APTS, Sigma Aldrich) and excess label was then removed using polyacrylamide based stationary phase in hydrophilic-interaction-chromatography (HILIC) mode. Subsequently, purified fluorescently labeled N-glycans were separated by multiplexed capillary gel electrophoresis (xCGE) and monitored via laser induced fluorescence (LIF) detection. xCGE-LIF data processing and normalization of migration times to an internal standard were performed with glyXtool<sup>™</sup> software (glyXera, Magdeburg, Germany). The generated N-glycan “fingerprints” (normalized electropherograms) were used for annotation of N-glycan peaks via migration time matching with the in-house N-glycan database (glyXtool v. 5.3.0). All database-matched N-glycan structures were confirmed by extensive exoglycosidase digests and subsequent repeated analysis by xCGE-LIF. Following specific enzymes were used:  $\alpha(2\text{-}3)$  sialidase (Sialidase S, recombinant from *Streptococcus pneumoniae*, expressed in *Escherichia coli*; Prozyme, Hayward, CA),  $\alpha(2\text{-}3,6,8)$  sialidase (Sialidase A, recombinant from *Arthrobacter ureafaciens*, expressed in *Escherichia coli*; Prozyme),  $\alpha(1\text{-}3,4)$  fucosidase (recombinant from *Xanthomonas*; QA-Bio),  $\alpha(1\text{-}2)$  fucosidase (recombinant from *Xanthomonas manihotis*, expressed in *Escherichia coli*; New England Biolabs, Ipswich, MA),  $\alpha(1\text{-}2,3,4,6)$  fucosidase (from bovine kidney; Prozyme),  $\beta(1\text{-}3)$  galactosidase (recombinant from *Xanthomonas manihotis*, expressed in *Escherichia coli*; New England Biolabs),  $\beta(1\text{-}4)$  galactosidase (recombinant from *Bacteroides fragilis*, expressed in *Escherichia coli*; New England Biolabs),  $\beta(1\text{-}4,6)$  galactosidase (from Jack bean; Prozyme),  $\beta(1\text{-}2,3,4,6)$ -N-acetylglucosaminidase (recombinant from *Xanthomonas manihotis*, expressed in *Escherichia coli*; New England Biolabs),  $\alpha(1\text{-}2,3,6)$  mannosidase (from Jack bean; Prozyme). Exoglycosidase digestions were carried out at 37  $^{\circ}\text{C}$  in buffers and under conditions recommended by the suppliers of the enzymes. Samples were purified by HILIC solid phase extraction (SPE) prior to xCGE-LIF analysis. Specific activity and possible side activity was carefully tested for each exoglycosidase enzyme used. For inter-sample quantitative comparison, 1  $\mu\text{g}$  of bovine asialofetuin was spiked to each sample as an internal standard prior to short-time SDS-PAGE separation. One asialofetuin derived N-glycan peak inside the xCGE-LIF electropherogram was used for quantitative normalization of sample peak intensities.

**Statistics**—Statistical analysis was carried out with GraphPad Prism software. Unless stated otherwise, mean value, standard error of the mean (S.E.) and number of replicates (n) are displayed. One asterisk denotes  $p < 0.05$ , two asterisks denote  $p < 0.01$  and three asterisks denote  $p < 0.001$ .



**FIG. 1. Generation and genomic characterization of PMM2-iPSC-C3.** *A*, scheme of lentiviral reprogramming vector construct (modified from (20)). *B*, timeline of reprogramming. PMM2-fibroblasts 3 days (3d) post lentiviral transduction (left image), reprogrammed cells emerged on MEFs 15d post transduction (middle image), PMM2-iPSC colony on MEFs 29d post transduction (right image). *C*, determination of vector copy numbers. Number of integrated vector constructs were determined by qPCR (according to (24)). Bar diagram shows mean  $\pm$  S.E. with  $n = 3$  (PMM2-fibroblasts and PMM2-iPSC clone 2) and  $n = 2$  (PMM2-iPSC clone 3). *D*, confirmation of the PMM2 mutations in PMM2-iPSCs by sequencing. Sequence analysis revealed the two heterozygous point mutations 357C>A and 422G>A in the PMM2 gene of the generated PMM2-iPSC clones 2 and 3. CBiPSC2 were used as control cells. *E*, Array-CGH analysis of PMM2-iPSC clone 2 and 3. The analysis of chromosomal integrity by Array-CGH revealed a deletion in the tumor suppressor gene *FHIT* on chromosome 3 in clone 2.

RESULTS

**Generation and Characterization of PMM2-iPSCs**—PMM2-iPSCs were reprogrammed from skin fibroblasts of a PMM2-CDG patient harboring the most frequent genomic PMM2 mutational combination of 422G>A in one allele and 357C>A

in the other allele. These fibroblasts were transduced with a polycistronic lentiviral vector construct expressing the reprogramming factors (RFs) OCT4, KLF4, SOX2, and c-MYC (20) (Fig. 1A). Upon transduction, expression of the red fluorescent protein dTomato could be monitored in the majority of cells

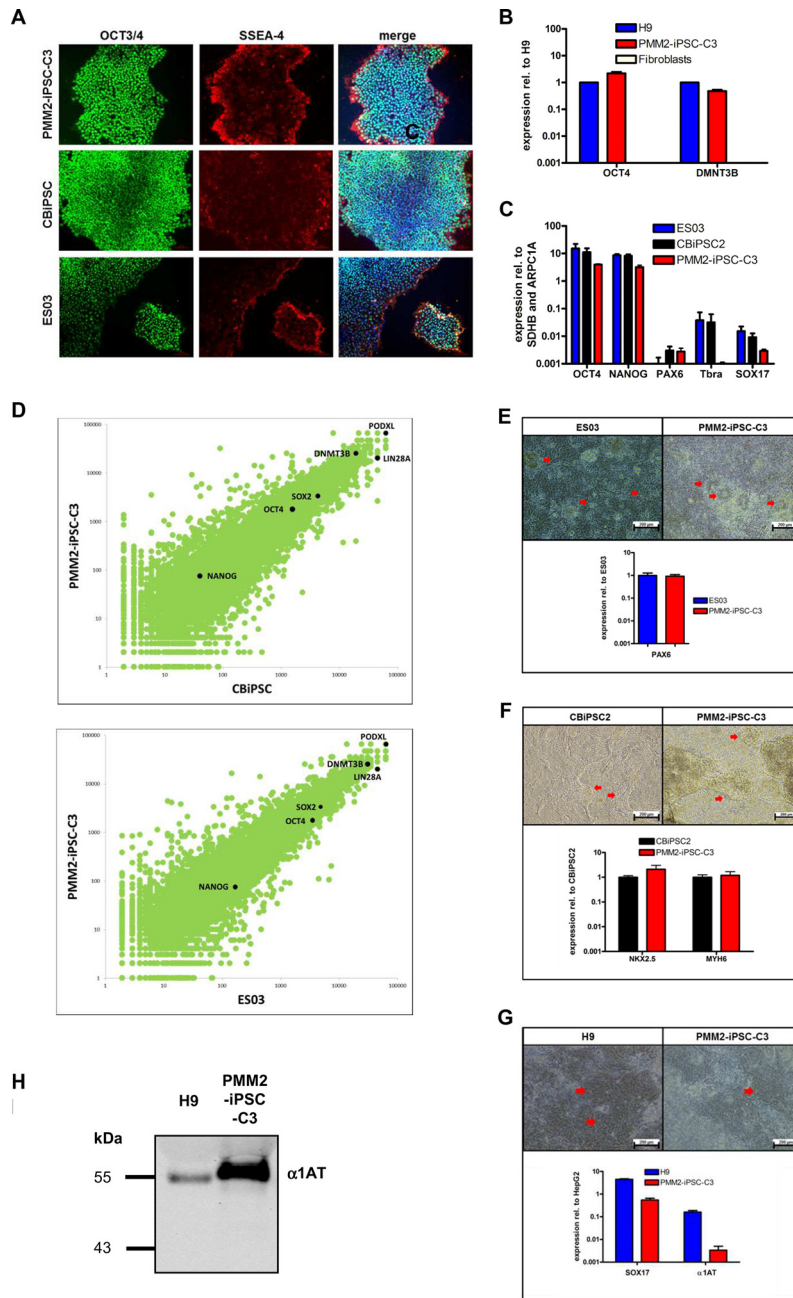
indicating expression of RFs. In the course of 2 weeks, the fibroblasts changed their morphology from long and slim shape into compact roundish cells with high nucleus to cytoplasm ratio, which is typical for hiPSCs (Fig. 1B). PMM2-iPSC colonies with typical stem cell shape emerged after vector silencing, which is indicated by absence of dTomato expression 4 weeks post transduction (Fig. 1B, right picture). Of 40,000 fibroblasts transduced in two independent reprogramming approaches only three clones emerged and could be maintained in culture (PMM2-iPSC-C1, PMM2-iPSC-C2 and PMM2-iPSC-C3). One of these clones, PMM2-iPSC-C1, was excluded for further analyses because of morphological abnormalities. Because retroviral vector integrations can lead to gene deletion or proto-oncogene activation (31), we determined the lentiviral vector copy number integrations by qPCR. For PMM2-iPSC-C2 and -C3 one and two integrations were detected, respectively (Fig. 1C), suggesting minimal influences on global gene expression. Genetic analysis confirmed the patient specific hypomorphic *PMM2*<sup>422G>A/357C>A</sup> mutations in both clones (Fig. 1D). As the reprogramming of somatic cells can cause chromosomal aberrations and unwanted mutations (32), we analyzed PMM2-iPSC-C2, PMM2-iPSC-C3 and the parental PMM2-fibroblasts by Array-CGH. This analysis revealed a deletion of a locus containing the tumor suppressor gene *FHIT* in PMM2-iPSC-C2 whereas no genomic aberrations were detected in PMM2-iPSC-C3 and parental fibroblasts (Fig. 1E). We therefore decided to perform the further studies with PMM2-iPSC-C3, only.

PMM2-iPSC-C3 displayed an ES cell-like morphology when cultivated either on mouse embryonic fibroblasts (MEFs, Fig. 1B, right picture) or on Matrigel<sup>TM</sup> (Fig. 2A) and stained positive for OCT3/4 and SSEA-4 (Fig. 2A). Disappearance of dTomato expression from the reprogramming cassette suggested effective epigenetic silencing of the lentiviral construct (Fig. 1B). qPCR analysis revealed high expression levels of endogenous OCT4 and DNMT3B (33) in PMM2-iPSC-C3 (Fig. 2B) and only minimal expression of early differentiation markers like *PAX6* (ectoderm, (34)), *T/Brachyury* (mesoderm, (23)) or *SOX17* (endoderm, (35)). All these expression levels were comparable to controls ES03 and CBIpSC2 (Fig. 2C). Global gene expression of PMM2-iPSC-C3, assessed by deep-sequencing, revealed a closely related profile to the pluripotent control cell lines ES03 and CBIpSC2. Notably, expression levels of pluripotency markers *NANOG*, *OCT4*, *SOX2*, *LIN28*, *DNMT3B* and *PODXL* (33) were nearly identical. Furthermore, *PODXL*, *LIN28A* and *DNMT3B* belonged to the highest expressed genes in all three cell lines tested (Fig. 2D, supplemental Table S6). We assessed the capacity of PMM2-iPSC-C3 to be differentiated into the three germ layers applying directed *in vitro* differentiation. PMM2-iPSC-C3 could be differentiated into neural progenitor cells (ectoderm) showing typical rosette shaped morphology (36) and expression of the early ectodermal marker *PAX6* (Fig. 2E). Directed cardiomyogenic differentiation (mesoderm) was per-

formed by temporal modulation of canonical Wnt-signaling (23) leading to the formation of beating foci with typical rhythmic contractions (supplemental Movie S1) unambiguously showing the generation of cardiomyocytes (37). These cells expressed the cardiomyocyte-specific marker genes *NKX2.5* and *MYH6* (38, 39) (Fig. 2F). A hepatic differentiation (endoderm) protocol (22) lead to the formation of cells showing a “cobble-stone”-like morphology that is typical for hepatic precursors and the expression of the early endoderm marker *SOX17* and the hepatocyte-specific marker alpha-1-antitrypsin ( $\alpha$ 1AT) (40) (Fig. 2G).  $\alpha$ 1AT-expression of hepatically differentiated PMM2-iPSC-C3 was also shown on the protein level by Western blot analysis (Fig. 2H).

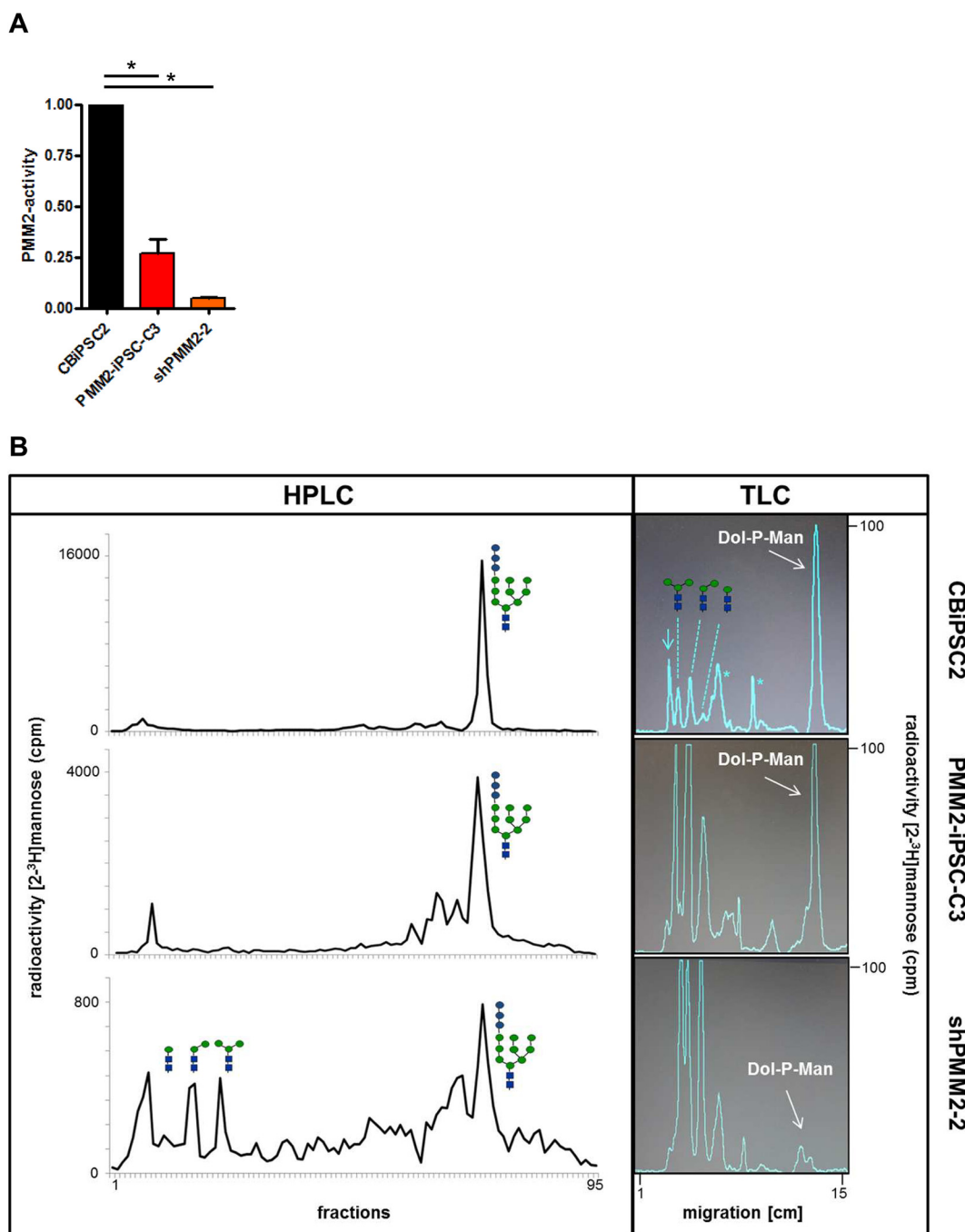
**Determination of Phosphomannomutase Enzymatic Activity and Analysis of Dolichol-linked Oligosaccharides**—The phosphomannomutase activity of PMM2-iPSC-C3 and PMM2-iPSC-C3 with an additional PMM2 knock-down (shPMM2-2, will be introduced below) was determined and compared with the healthy control hiPSC line CBIpSC2. As both, PMM1 and PMM2 catalyze the same reaction, discrimination between these phosphomannomutases is not possible and the measured activity is the sum of the activities of both enzymes. Protein-normalized cell lysates of PMM2-iPSC-C3 showed a reduction in phosphomannomutase activity that was  $27 \pm 5\%$  compared with CBIpSC2, whereas the residual activity of shPMM2-2 was severely reduced to  $5 \pm 0.5\%$  (Fig. 3A). To determine whether the allocation of full-length oligosaccharide Glc3Man9GlcNAc2-PP-dolichol is affected because of the reduced phosphomannomutase activity, [<sup>3</sup>H]mannose-labeled oligosaccharides were extracted, released from dolichol and analyzed by HPLC. The main peak fraction of CBIpSC2 and PMM2-iPSC-C3 eluted with a Glc3Man9GlcNAc2 standard, respectively (Fig. 3B), whereas the structural composition of the oligosaccharides derived from the knock-down cell line (shPMM2-2) showed in addition shortened intermediates of the structures Man3GlcNAc2 to Man1GlcNAc2. In contrast to CBIpSC2 and PMM2-iPSC-C3, in which the full-length oligosaccharide predominates, whereas truncated structures with three or fewer mannose residues represent between 5.7–6.9% of all [<sup>3</sup>H]oligosaccharides, this level was elevated to 17.4% in the knock-down cell line (shPMM2-2). When we compared the overall radioactivity incorporated into the shortened dolichol-linked sugars with the amount of [<sup>3</sup>H] found in the Glc3Man9GlcNAc2 fractions, it even became more obvious that in case of CBIpSC2 and PMM2-iPSC-C3, 13.2% and 18.4% of the radioactivity was found in the early HPLC fractions, respectively, whereas in the knock-down cells the level was increased to 72.8%.

Next we determined the incorporation of [<sup>3</sup>H]mannose into Dol-P-Man which is found together with the shortened dolichol-linked oligosaccharides in the chloroform/methanol extracts. Although in the CBIpSC2 cells 42.6% of the overall radioactive mannose measured was found as Dol-P-Man, only 23.9% and 6.7% were detected in case of PMM2-



**FIG. 2. PMM2-iPSC-C3 are pluripotent.** *A*, Immunocytochemistry of PMM2-iPSC-C3, CBiPSC2 and ES03 grown on Matrigel<sup>TM</sup> with mTeSR<sup>TM</sup>1 using antibodies against the pluripotency markers OCT3/4 (green, left panel) and SSEA-4 (red, middle panel). Merge of OCT3/4, SSEA-4 and DAPI (blue, right panel). *B*, qPCR analysis of pluripotency markers *OCT4* (endogenous) and *DNMT3B* in H9, PMM2-iPSC-C3 and fibroblasts. Expression levels are normalized to levels in H9. *C*, qPCR analysis of the pluripotency markers *OCT4* and *NANOG* together with early differentiation markers *PAX6* (ectoderm), *T/Bra* (mesoderm) and *SOX17* (endoderm) in ES03, CBiPSC2 and PMM2-iPSC-C3. Expression levels are relative to the housekeeping genes *succinate dehydrogenase complex subunit B* (*SDHB*) and *actin related protein 2/3 complex subunit 1A* (*ARPC1A*). *D*, whole genome expression analysis by deep-sequencing. Scatter plot of gene expression levels in PMM2-iPSC-C3 compared with CBiPSC2 (upper panel) and ES03 (lower panel). Expression of the pluripotency markers *NANOG*, *OCT4*, *SOX2*, *LIN28A*, *DNMT3B* and *PODXL* is depicted in black, 18456 transcripts were identified in total. *E*, neural differentiation. Formation of neural rosettes (upper panel) and qPCR analysis for expression of *PAX6* (lower panel) upon culture of ES03 and PMM2-iPSC-C3 for 10 days in STEMdiff<sup>TM</sup> Neural Induction Medium (StemCell Technologies). *F*, cardiomyogenic differentiation. Light microscopic pictures (upper panel) and qPCR analysis of the cardiomyocyte-specific transcription factors *NKX2.5* and *MYH6* (lower panel) around day 10 of differentiation of CBiPSC2 and PMM2-iPSC-C3. *G*, hepatic differentiation. Light microscopic pictures (upper panel) and qPCR analysis of the human embryonic stem cell line H9 as control and PMM2-iPSC-C3 at day 10 of differentiation for the endodermal markers *SOX17* and  $\alpha$ 1AT relative to the human liver carcinoma cell line HepG2. Bar diagrams show mean  $\pm$  S.E.,  $n = 3$ , except for *PAX6*  $n = 2$ . *H*, Western blot against  $\alpha$ 1AT of proteins precipitated from culture supernatants of H9 and PMM2-iPSC-C3 upon hepatic differentiation for 13–15 days.





**FIG. 3. Determination of phosphomannomutase activity and dolichol-linked oligosaccharides by HPLC and TLC.** *A*, phosphomannomutase activity was determined as the turnover of radio-labeled Man-6-P to Man-1,6-P in the presence of cofactor Glu-1,6-P from whole cell lysates that were adjusted to equal protein amounts. Bar diagrams show mean  $\pm$  S.D. for CBIpSC2, PMM2-iPSC-C3 and knock-down PMM2-iPSC-C3 (shPMM2-2), CBIpSC2 activity was set to 1, for statistics a ratio t-Test was applied. *B*, analysis of dolichol-linked oligosaccharides was performed with  $1.2 \times 10^6$  of control (CBIpSC2), patient-derived (PMM2-iPSC-C3) and knock-down PMM2-iPSC-C3 (shPMM2-2) cells that were metabolically labeled with  $[2-^3\text{H}]$ mannose.  $[^3\text{H}]$ Oligosaccharides were released from dolichol and separated by HPLC (left) or thin layer chromatography (TLC; right). Used symbols: blue square: N-acetylglucosamine; green circle: mannose; blue circle: glucose; arrow: origin; asterisk: unspecific  $[^3\text{H}]$ compound arising because of the starvation conditions before labeling.

iPSC-C3 and the knock-down cells, respectively. Finally, we were also interested to see if the PMM2 deficiency led to a reduced incorporation of  $[2-^3\text{H}]$ mannose structures into nascent glycoproteins by comparing the incorporation of  $[2-$

$^3\text{H}]$ mannose to that of  $[^{35}\text{S}]$ methionine into TCA insoluble material. The  $[^3\text{H}]/[^{35}\text{S}]$  ratio in PMM2-iPSC-C3 was 71.08% of the control and was further decreased to 24.3% in the knock-down cells.

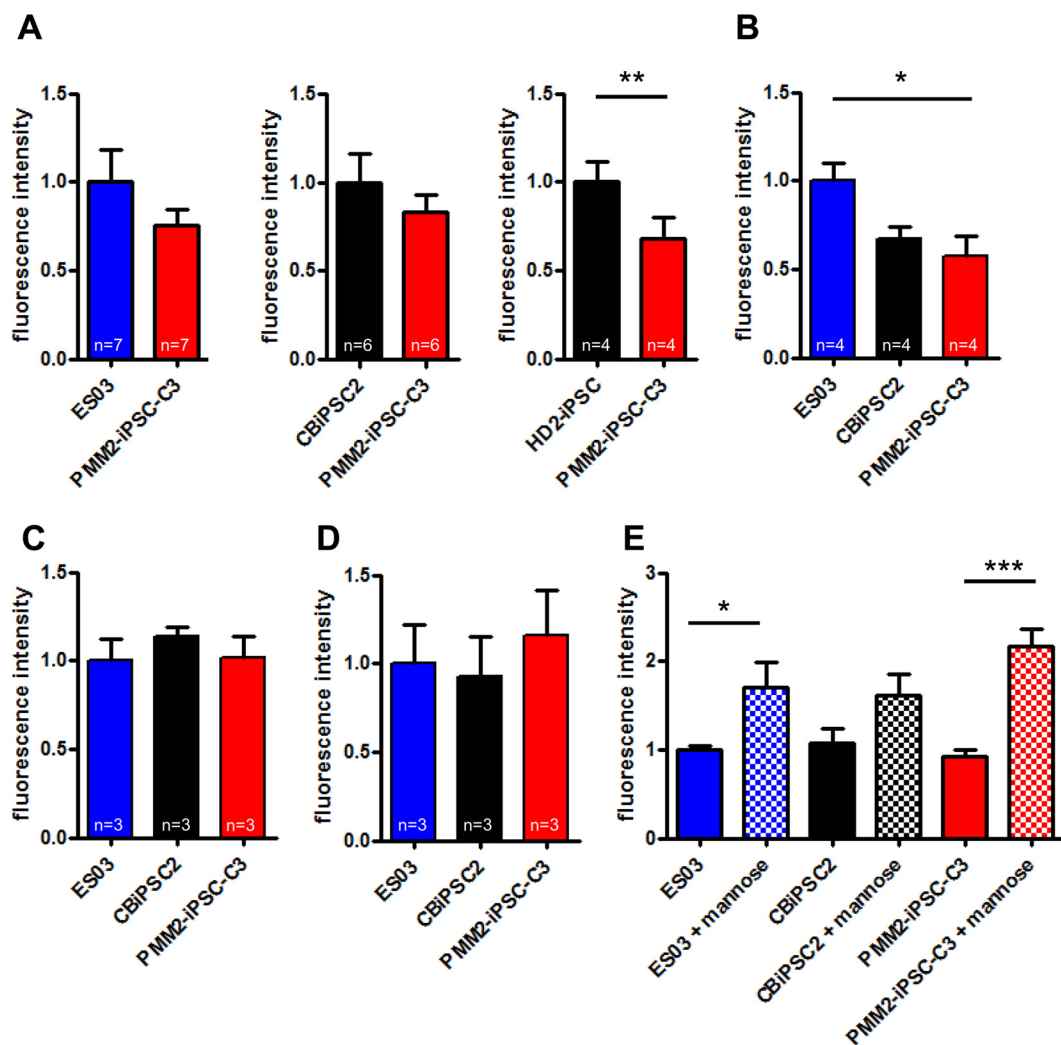


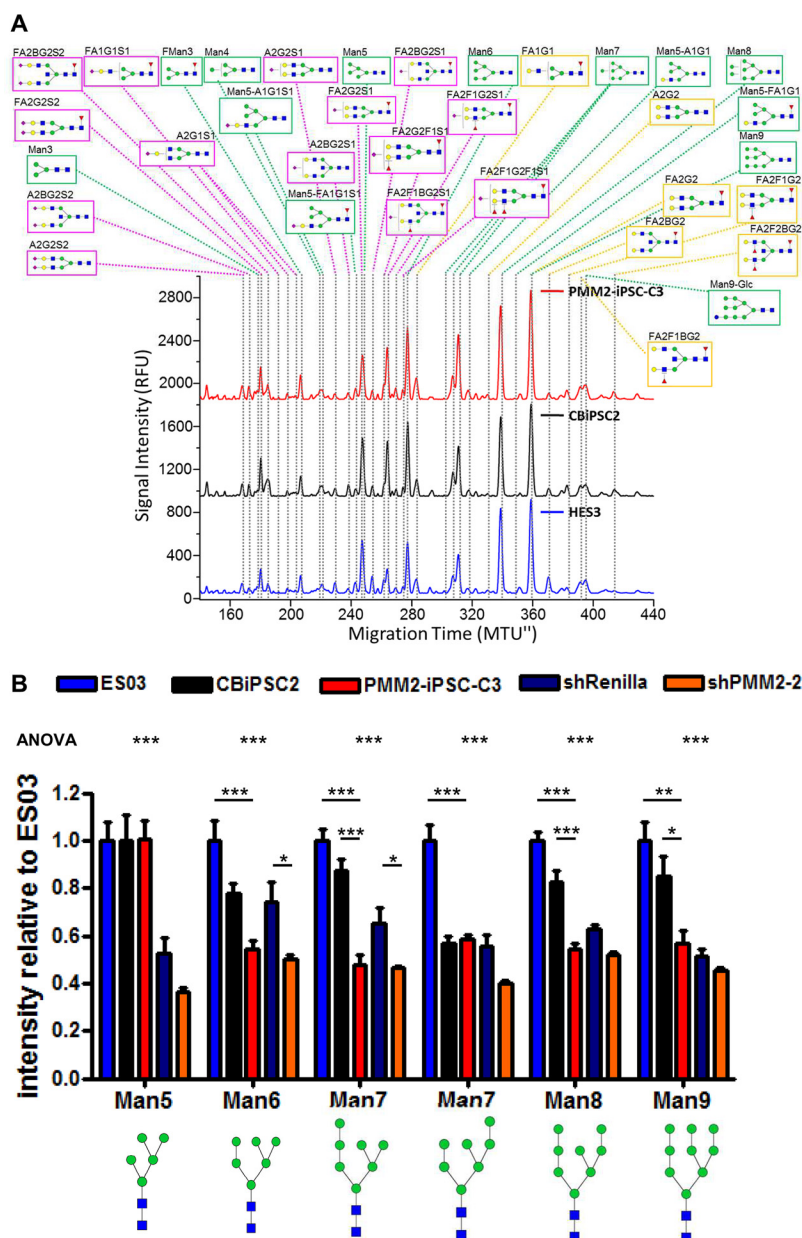
FIG. 4. **Quantification of mannosylation by lectin flow cytometry.** A to D, flow cytometry with the indicated cell lines was performed with GNA-FITC (A), Con A-TRITC (B), SNA-TRITC (C) and MAA-FITC (D) as glycan specific reagents. Bar diagrams display means of fluorescence intensities + S.E. for the respective cell lines. Numbers of independent replicates are indicated in the figure, a paired Student's *t* test was performed and statistical significant differences ( $p < 0.05$ ) are highlighted. E, quantification of cell surface mannosylation after culture in medium supplemented with 10 mM mannose by GNA-FITC flow cytometry; bar diagrams show mean  $\pm$  S.E., unpaired Student's *t*-test was performed between each of the cell lines with and without additional nutritional mannose,  $n = 4$  for samples without mannose,  $n = 3$  for samples with mannose.

*Lectin Analysis Revealed Reduced Levels of High-mannose-type N-glycans on Cell Surface Proteins of PMM2-iPSC-C3*—Patients with hypomorphic Arg<sup>141</sup>His and Phe<sup>119</sup>Leu alleles of PMM2 display reduced N-glycosylation of serum glycoproteins (41). Here we used the patient-derived PMM2-iPSC-C3 in order to study the effect of these mutations on N-glycosylation in the pluripotent state. To quantitatively assess cell surface glycosylation, flow cytometry with different lectins was performed. Binding of FITC-labeled *Galanthus nivalis* agglutinin (GNA)—preferentially detecting  $\alpha$ 1,3- and  $\alpha$ 1,6-linked terminal mannose of high-mannose-type N-glycans (42, 43)—to viable cells of PMM2-iPSC-C3 was reduced in comparison to different control hPSCs (ES03, CBIpSC2, HD2-iPSC) (Fig. 4A). The specificity for binding of GNA-FITC to mannosylated struc-

tures on cells was confirmed by competition with mannose during staining, which considerably reduced GNA-FITC binding to cells (supplemental Fig. S1A). Concordantly, binding of the lectin GNA to blotted proteins of PMM2-iPSC-C3 was slightly impaired in comparison to control hPSCs (ES03, CBIpSC2) under physiological as well as under low glucose culture conditions (supplemental Fig. S1B). Flow cytometry using TRITC-labeled concanavalin A (Con A), detecting high-mannose-type N-glycans with highest affinity (44), also revealed reduced binding to PMM2-iPSC-C3 if compared with ES03 (Fig. 4B). These findings indicate diminished mannosylation of N-glycans expressed at the cell surface in PMM2-iPSC-C3. Flow cytometry using the lectins *Sambucus nigra* agglutinin (SNA, Fig. 4C) or *Maackia amurensis*

FIG. 5. Analysis and quantification of

**PMM2-iPSC-C3 N-glycans.** *A*, electropherograms of PMM2-iPSC-C3, CBiPSC2 and ES03 derived N-glycans, labeled with APTS and analyzed by xCGE-LIF. Peaks were annotated depending on migration time matching with an in-house N-glycan database and exoglycosidase digests (supplemental Fig. S2). This electropherogram shows representative data of three independent experiments. An intra-sample relative quantification of the different N-glycan levels is presented as supplemental Table S7. *B*, inter-sample relative quantitative comparison of levels of the most abundant high-mannose-type N-glycans of ES03, CBiPSC2, PMM2-iPSC-C3, PMM2-iPSC-C3 transduced with shRenilla (will be introduced below) and PMM2-iPSC-C3 transduced with shPMM2-2 (will be introduced below). Individual spectra were quantitatively normalized to a defined spiked-in asialofetuin N-glycan. Bar diagram shows mean  $\pm$  S.E.,  $n = 3$  each. The mean intensity of ES03 was set to 1 and intensities for other cell lines are relative to ES03. For statistics ANOVA with Bonferroni's post hoc test was used. *A* and *B*, N-glycan structures were drawn with GlycoWorkbench v.1.0.3353 (84) by the guidelines of the Consortium for Functional Glycomics (85). Green circle: mannose; yellow circle: galactose; blue quadratic rectangle: N-acetylglucosamine; violet diamonds: sialic acid; red triangle: fucose. Quantification of less abundant N-glycans including hybrid- and complex-type N-glycans is presented as supplemental Fig. S3.



agglutinin (MAA, Fig. 4D), which are specific for sialic acid attached to galactose in either  $\alpha$ -2,6 or  $\alpha$ -2,3 linkage, respectively, did not reveal any differences between PMM2-iPSC-C3 and control cell lines. Culturing of PMM2-iPSC-C3 and control hPSCs (ES03 and CBiPSC2) for at least three passages in mTeSR<sup>TM</sup>1 medium supplemented with 10 mM mannose increased binding of GNA-FITC in all cell lines tested (Fig. 4E, supplemental Fig. S1B). This mannose supplementation did not obviously change stem cell morphology or growth behavior.

**PMM2-iPSC-C3 Display Characteristic but Reduced N-glycan Levels**—N-glycosylation of PMM2-iPSC-C3 was analyzed by multiplexed capillary gel electrophoresis with laser induced fluorescence detection (xCGE-LIF (30, 45–48)) and compared

with the hPSC lines ES03 and CBiPSC2. Identification and annotation of N-glycans was carried out based on our internal N-glycan database and by comprehensive exoglycosidase digests (supplemental Fig. S2). We could clearly assign 61 different N-glycan species subdividing into 13 high-mannose-type and 48 complex-type N-glycans in all investigated cell lines. This approach enabled an intra-sample relative quantitative assessment of N-glycan intensities and clearly demonstrated that the N-glycosylation patterns of PMM2-iPSC-C3, ES03 and CBiPSC2 were similar and high-mannose-type N-glycans were the predominant species (Fig. 5A, supplemental Table S7). Interestingly, treatment with the  $\alpha$ (2,3)-sialic acid-specific sialidase S from *Streptococcus pneumoniae* did not affect the xCGE-LIF peak pattern in any of the human pluri-

potent stem cell lines analyzed (ES03, CBiPSC2, PMM2-iPSC-C3), proving that hPSCs at least under the tested culture conditions do not produce  $\alpha(2,3)$ -sialylated N-glycans (supplemental Fig. S2).

xCGE-LIF, as described above, is capable to decipher even minor changes in the N-glycosylation pattern between two samples, but is not a quantitative method allowing the detection of a general reduction of all N-glycans. As the latter case would be expected for cells with a mutation in the PMM2, we further developed the xCGE-LIF-based method in order to allow quantitative comparison between different samples (inter-sample quantification). For that purpose, asialofetuin was spiked into each sample in equal amounts as an internal standard. The asialofetuin derived N-glycans were proven to migrate at positions where they do not overlap with peaks of the stem cell glycans. All N-glycan fingerprints were then normalized to the height of one asialofetuin N-glycan peak, enabling a quantitative comparison of sample peaks. Using this method, we quantified 22 N-glycans. Peak intensities of the 6 most abundant high-mannose-type N-glycans (Man5 to Man9) were reduced by up to 40% in PMM2-iPSC-C3 compared with ES03 and CBiPSC2 (Fig. 5B). The xCGE-LIF-based quantitative comparison of hybrid- and complex-type N-glycans between ES03, CBiPSC2 and PMM2-iPSC-C3 did not show a common pattern (supplemental Fig. S3). However, it is likely that the exact quantification of these glycan species is hindered by their low appearance.

**RNAi Knock-down of PMM2 in PMM2-iPSC-C3 Further Reduces Mannosylation**—In order to study the consequences of a further reduction of PMM2 activity on glycosylation at the stem cell level, we performed a knock-down of PMM2 in PMM2-iPSC-C3 by RNAi. We applied a lentiviral vector expressing shRNAs embedded in an optimized mir-30 backbone (21) driven by the SFFV promoter, which is coupled to the minimal ubiquitous chromatin opening element CBX3 (49) to prevent promoter silencing for long-term stable shRNA expression in iPSCs (Fig. 6A). PMM2-iPSC-C3 were transduced with different PMM2-specific shRNAs (shPMM2-1, shPMM2-2, shPMM2-3) and a negative control shRNA that was designed against the luciferase from *Renilla reniformis* (shRenilla) as a default target. All constructs harbor a GFP sequence 5' of the shRNA, enabling monitoring shRNA expression (Fig. 6B). shPMM2-2 induced a significant PMM2 knock-down of about 40–50% in GFP<sup>+</sup>-sorted cells as assessed by qPCR. shPMM2-1 and shPMM2-3 did not cause any knock-down of PMM2 and were therefore excluded from the following analysis. As expected, shRenilla had no influence on PMM2 expression levels (Fig. 6C). PMM2-iPSC-C3 transduced with shPMM2-2 and control vector (shRenilla) still expressed OCT3/4 and SSEA-4, suggesting that pluripotency was unaffected during further cultivation (Fig. 6D). Cell surface mannosylation was assessed by GNA-lectin flow cytometry as described above. PMM2-iPSC-C3 transduced with shPMM2-2 displayed a significant reduction of cell sur-

face mannosylation of about 30% compared with shRenilla-transduced control cells and the parental PMM2-iPSC-C3 (Fig. 6E). These observations are in concordance with the quantitative xCGE-LIF analyses (Fig. 5B).

## DISCUSSION

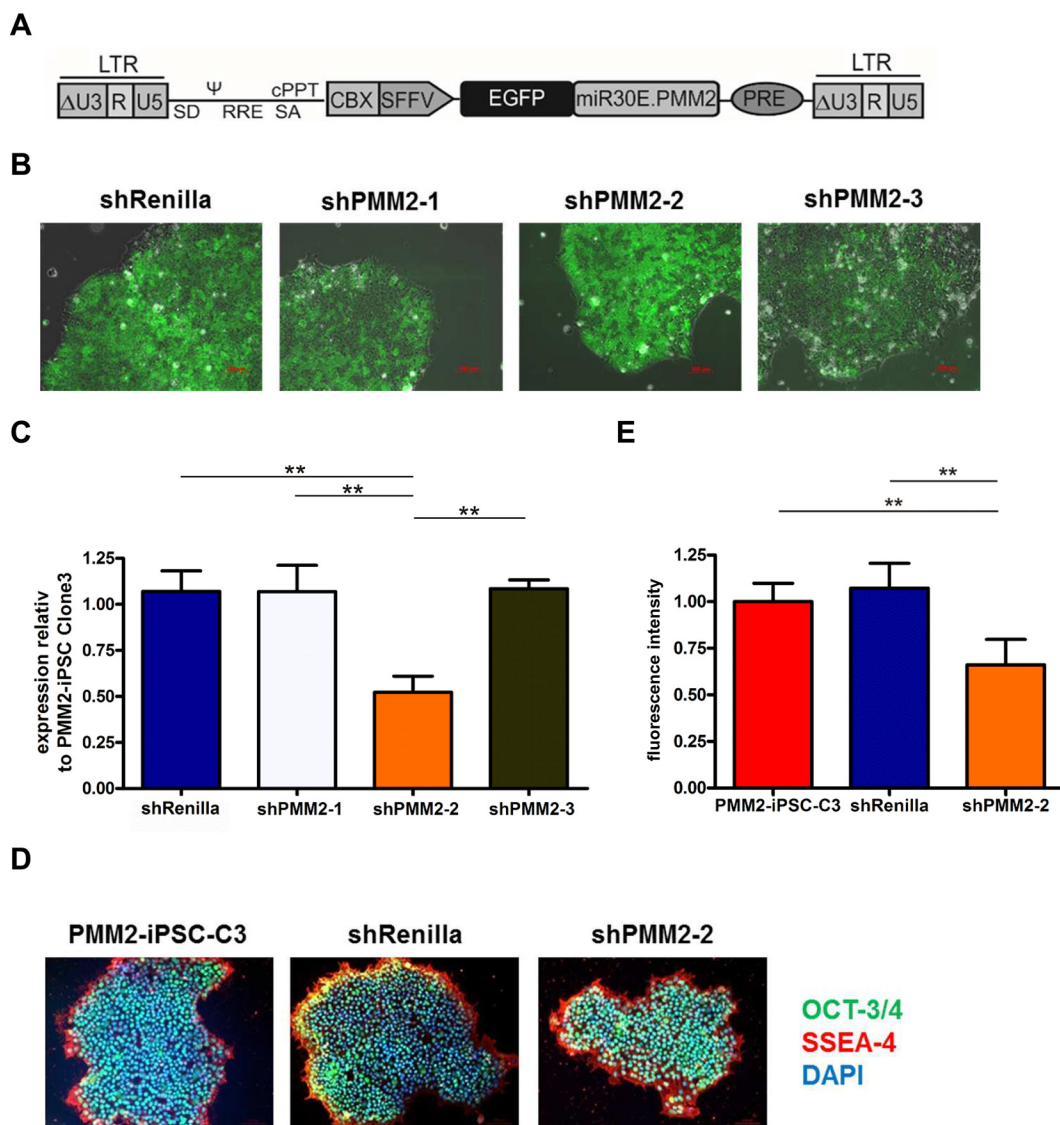
PMM2-CDG, the most common type of the rare disease family of congenital disorders of glycosylation is a severe inherited congenital disorder affecting N-glycosylation, which is often fatal and generally associated with major developmental defects. The pathophysiology of PMM2-CDG is poorly understood (50–52) and with more than 50% of all human proteins being N-glycosylated (53), PMM2-CDG is expected to affect a tremendous complexity of protein functions.

Several models to study PMM2-CDG have been applied so far, including human fibroblasts (54, 55), mice (13), zebrafish (11) and *Xenopus laevis* (10). By using fibroblasts from PMM2-CDG patients the biochemical phenotypes of this disease on metabolites in the pathway of PMM2 were unraveled (9) but fibroblasts cannot model the complex relationships present in specific tissues, organs or even whole organisms. Animal models are ideal tools to study PMM2-CDG at the organismal level but their complexity impedes a molecular correlation between distinct glycosylation defects and pathological phenotypes.

An alternative toward a better understanding of PMM2-CDG would be a human cell culture model enabling to study the effects of PMM2-CDG during embryonic development. Since the invention of cellular reprogramming (15, 56) various genetic diseases including neurodegenerative and cardiac disorders, hematopoietic maladies and various metabolic diseases have been modeled with iPSCs (16, 17). The iPSC-technology is especially attractive for the study of rare diseases. For these studies iPSCs display a high potential for infinite expansion and molecular characterization whereas primary material is often limited. Therefore, we generated a human PMM2-CDG iPSC model by reprogramming of PMM2-CDG patient-derived fibroblasts and characterized glycosylation of these PMM2-iPSCs in depth.

The PMM2-CDG iPSC cell culture model presented here fills the gap between fibroblast and animal models. PMM2-iPSC-C3 display the features of completely reprogrammed “bona fide” iPSCs and therefore present a theoretically indefinite source of stem cells and differentiated progeny. Our model enables to study the disease pathology and underlying molecular mechanisms already on the stem cell level. Furthermore, PMM2-iPSC-C3 could be differentiated into cell types from all three embryonic germ layers providing the opportunity to study this specific glycosylation defect in a variety of more specialized cell types of the human body.

Interestingly, the observed reprogramming efficiency of 0.008% was rather low for PMM2-fibroblasts compared with studies with different genes being affected, where the authors reported efficiencies of about 0.1–1% with a similar 4in1



**FIG. 6. Knock down of *PMM2* in PMM2-iPSC-C3 by RNAi.** *A*, Scheme of the lentiviral vector construct used for expression of shRNAs. *B*, transduction of shRNA constructs (shRenilla (negative control), shPMM2-1 to 3 (constructs targeting *PMM2*)) was monitored by eGFP fluorescence. *C*, qPCR-based quantification of *PMM2*-expression in *PMM2*-knock down cell lines relative to PMM2-iPSC-C3. Bar diagrams show mean  $\pm$  S.E.,  $n = 3$ . Statistical analysis was done with ANOVA and Bonferroni's multiple comparison post hoc test. *D*, immunocytochemistry for expression of pluripotency markers OCT3/4 (green) and SSEA-4 (red). Nuclei are counterstained with DAPI (blue). *E*, quantification of mannosylated cell surface glycoconjugates by lectin-flow cytometry with GNA-Texas Red for PMM2-iPSC-C3, PMM2-iPSC-C3 transduced with shRenilla and PMM2-iPSC-C3 transduced with shPMM2-2. Bar diagrams show mean  $\pm$  S.E.,  $n = 3$ . Statistical analysis was done with ANOVA and Bonferroni's multiple comparison post hoc test.

lentiviral vector construct (57). Reprogramming efficiencies are affected by diverse parameters including the age of the donor (58) or the quality and viability of primary fibroblasts in culture before and during reprogramming. But also loss-of-function mutations can restrict reprogramming efficiency as it has been shown for reprogramming of Fanconi anemia cells (59). In our study it cannot be excluded that the decreased reprogramming efficiency of PMM2-CDG fibroblasts is associated with the functional mutation of PMM2 affecting N-glycosylation. By two independent reprogramming approaches only three PMM2-iPSC clones were obtained, of which two

had to be discarded because of phenotypic or genomic aberrations. In the latter case a deletion in the tumor suppressor gene *FHIT* was observed by Array-CGH, which could reflect a typical phenomenon during reprogramming caused by genomic instability (60) or could be the consequence of high selection pressure because of restricted reprogramming caused by PMM2 dysfunction. Functional correction by retroviral transfer of the *PMM2* gene could give an indication if the loss of enzymatic function directly decreases reprogramming efficiency. However, based on morphology, gene expression analysis and *in vitro* differentiation capacity, the se-

lected clone PMM2-iPSC-C3 displayed all critical features of completely reprogrammed functional iPSCs (61).

Two highly conserved phosphomannomutases (PMM1 and PMM2) exist in humans and both can convert Man-6-P to Man-1-P *in vitro* (62). However, deletion of *Pmm1* in mice is neither associated with any obvious phenotype nor with hypoglycosylation (63), whereas disruption of the *Pmm2* gene causes early embryonic lethality (12). The latter observation and the severe disease phenotype of PMM2-CDG patients, in which PMM1 is unaffected apparently indicates that PMM1 cannot compensate for PMM2 activity. Residual phosphomannomutase activity in PMM2-iPSC-C3 was determined to be about 27% of nondiseased hPSCs. Deep-sequencing revealed that expression of *PMM2* was 5–10-fold higher than *PMM1* expression in hPSCs and we therefore argue that the observed phosphomannomutase *in vitro* activity in hPSCs is mainly because of PMM2. These findings led to the hypothesis that PMM2 might be the phosphomannomutase, which is essential during early embryonic development when high-mannose-type N-glycan structures are predominant (64). PMM1 was shown to be highly expressed perinatally in mice (63) and we hypothesize that later in development PMM1 together with defective PMM2 are capable to restore the hypoglycosylation phenotype. In adult PMM2-CDG patient's serum glycoproteins have been shown to be normally glycosylated (65, 66). However, malformations that were acquired during early phases of development cannot be reversed.

The observed residual PMM2 activity in PMM2-iPSC-C3 differs from the reported parental PMM2-CDG fibroblasts activity of about 10% (NIGMS Human Genetic Cell Repository data sheet), which is a typical activity value observed in severely affected PMM2-CDG patients (67). The method used in the present study calculates phosphomannomutase activity in a direct way as it measures the turnover of radio-labeled Man-6-P to Man-1,6-bisphosphate. In contrast, the method described by van Schaftlingen and Jaeken (8) determines phosphomannomutase activity in a coupled enzymatic assay where the activity is determined indirectly, as the conversion of NADP to NADPH by glucose-6-phosphate dehydrogenase. The differences between both methods could account for the observed discrepancy between phosphomannomutase activity of PMM2-fibroblasts and PMM2-iPSC-C3. Besides, the relatively high residual enzymatic activity presumably also prevented accumulation of shorted dolichol-linked oligosaccharides, which are a characteristic biochemical hallmark in PMM2-CDG, and which was observed for PMM2-iPSC-C3 transduced with an shRNA against PMM2 (shPMM2-2). Nevertheless, the total amount of the full-length oligosaccharide Glc3Man9GlcNAc2, the incorporation of radioactively labeled mannose into proteins and Dol-P-Man synthesis were clearly diminished in case of the PMM2-iPSC-C3 and further reduced in PMM2-iPSC-C3 transduced with shPMM2-2, clearly demonstrating the impact of the decreased PMM2 activity on the allocation of the LLOs.

Lectin blotting with GNA, which strongly binds to high-mannose-type N-glycans (42, 43) indicated hypoglycosylation of proteins in PMM2-iPSC-C3. We additionally performed flow cytometry with the fluorescently labeled lectins GNA and Con A. Con A also preferentially binds to high-mannose-type N-glycans (44) and is not known to bind to O-glycans (68). This analysis was performed on intact cells and showed reduced levels of cell surface exposed high-mannose-type N-glycans, which could be a consequence of membrane protein hypoglycosylation or reduced incorporation of glycoproteins into the plasma membrane, as recently shown for hypoglycosylated ICAM-1 (69). By spiking-in a defined reference glycoprotein (asialofetuin) to our samples, we here present the application of xCGE-LIF for quantitative comparison between different samples. Using protein normalized samples, this approach revealed a clear reduction of high-mannose-type N-glycans in the overall proteome of PMM2-iPSC-C3 in comparison to nondiseased hPSCs. Hybrid- and complex-type N-glycans were only present in low abundance on hPSCs impeding their quantification. These observations are in concordance with common knowledge that PMM2-CDG causes hypoglycosylation of serum proteins in PMM2-CDG patients (41) and in a previously published PMM2-iPSC model reduced glycosylation of PMM2-iPSCs was shown indirectly using an ER-resident N-glycosylation responsive GFP (70). In line with previous studies reporting reduced N-glycosylation site occupancy but unaffected distribution of different N-glycan species (71), our xCGE-LIF analyses (30, 45–48) showed that the N-glycosylation pattern is not affected in PMM2-iPSC-C3. We found high-mannose-type N-glycans (Man5 to Man9) to be the predominant glycan species accounting for about 70% of all N-glycans, which is concordant to previous findings for hESCs and hiPSCs (64, 72). Our xCGE-LIF analysis combined with exoglycosidase digests clearly revealed that sialic acids on N-glycans of hPSCs are exclusively  $\alpha(2,6)$ -linked. This observation has been reported before (72, 73) and might affect the interaction of cell surface glycans with endogenous lectins, which is known to affect pluripotency of hPSCs (74). Overexpression of  $\alpha(2,6)$ -linked sialic acid is observed in many types of human cancers (75) and might protect tumor cells from galectin-mediated apoptosis (76). The fact that sialylated complex-type N-glycans are present only in minor amounts on hPSCs together with the absence of  $\alpha(2,3)$ -linked sialic explains the failure to identify differences by flow cytometry with the lectins MAA and SNA.

In PMM2-CDG patient derived fibroblasts reduced GDP-mannose levels have been rescued by adding mannose to the culture medium (54, 55, 77). In the present study it could be proven that mannose supplementation was sufficient to reverse hypoglycosylation in the embryonic state as seen in the PMM2-iPSC-C3. This observation is in line with recent findings that dietary mannose supplementation in mice during pregnancy is of therapeutic importance as it prevented manifestation of the PMM2-CDG disease phenotype in the off-

spring (13). Interestingly, supplementation of culture media with mannose increased the level of mannosylated cell surface glycoconjugates in all tested hPSCs suggesting that the glycome is a rather flexible system that responds to environmental conditions and could reflect the nutritional state of cells (78).

Diagnostics are based on serum transferrin isoelectric focusing, showing an isoform shift from predominant tetraasialotransferrin in healthy individuals to di- and asialotransferrin in PMM2-CDG patients (5). Hypoglycosylated variants of the liver derived serum protein alpha-1-antitrypsin ( $\alpha$ 1AT) serve as diagnostic marker for CDGs in the first three months of life when the standard marker transferrin is partially not yet fully matured (79). In our study, the molecular weight of secreted  $\alpha$ 1AT derived from hepatically differentiated H9 or PMM2-iPSC-C3 was slightly above 55 kDa indicating full glycosylation (80) and no variants of  $\alpha$ 1AT with lower molecular weight were detected as previously shown by de la Morena-Barrio *et al.* in the plasma of PMM2-CDG patients (81). However, Dupre *et al.*, observed hypoglycosylation of  $\alpha$ 1AT in sera of PMM2-CDG patients but not in fibroblasts after a few passages in cell culture (82). The authors suggest that  $\alpha$ 1AT hypoglycosylation is tissue specific. Obviously in a cell culture model the nutritional limitations that are present in the liver cannot be recapitulated. However, under physiological conditions the great majority of mannose in N-glycans is derived from glucose (83). Culture conditions, which are needed for maintenance of human pluripotent stem cells contain glucose above physiological levels, leading to increased levels of mannose available for N-glycosylation. Under these conditions the residual PMM2 activity of 27% is likely to be sufficient to prevent major limitations in N-glycosylation. Therefore, the observed unaltered glycosylation of  $\alpha$ 1AT in PMM2-iPSC-C3-derived hepatic cells could be caused by the high glucose culture conditions that are, however, needed to sustain pluripotent stem cells and for the differentiation into hepatic cells. The nutritional conditions in cell culture would also explain why the observed hypoglycosylation in PMM2-iPSC-C3 was only moderate and did not affect gene expression or pluripotency including differentiation capacity.

Thus we additionally performed an RNAi mediated *PMM2* knock-down in PMM2-iPSC-C3 in order to improve the model character of the generated PMM2-iPSC-C3 under the rich nutritional stem cell culture conditions. Additionally, to prove the postulated correlation of reduced *PMM2* activity and hypoglycosylation we intended to compare PMM2-iPSC-C3 with their knock-down counterparts having an isogenic background. The shRNAs used in this study are designed in a way that they are processed by the cell specific miRNA biogenesis pathways and therefore are also known as “shRNAmirs.” “ShRNAmirs” are able to mediate potent knock-down and have the advantage that they are expressed by an RNA polymerase II promoter and can be cloned in the 3'UTR of a reporter, like GFP, to monitor shRNA expression. Further-

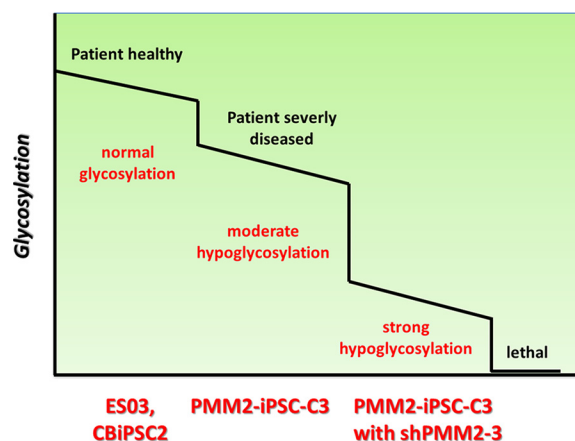


Fig. 7. **Scheme for N-glycosylation in PMM2-iPSC models.** N-glycosylation is gradually reduced in PMM2-iPSC and PMM2-iPSC with *PMM2* knock-down compared with control iPSCs. These model cell lines enable studying the effect of different levels of N-glycosylation on embryonic development in a human cell culture system.

more, these artificial microRNAs show a lower cellular toxicity as conventional shRNAs when interfering with the miRNA machinery (21).

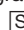
*PMM2* knock-down was successfully performed in PMM2-iPSC-C3 and led to biochemical characteristics known from PMM2-CDG fibroblasts, as severely reduced *PMM2* activity, accumulations of shortened dolichol-linked oligosaccharides and a decreased level of Dol-P-Man. Additionally a further reduction of cell surface mannosylation in comparison to PMM2-iPSC-C3 was detected, which could be observed even at cell passage 40 (data not shown), indicating the stability of the shRNA expression during prolonged cell culture. Therefore, the generated iPSC knock-down cell line can serve as a further PMM2-CDG specific model to study molecular mechanisms of PMM2-CDG on the stem cell level and their differentiated progeny.

Taken together in this study we describe the generation of PMM2-iPSC and PMM2-iPSC knock-down models (Fig. 7). Reduced *PMM2* activity causes hypoglycosylation already in human pluripotent stem cells that can be rescued by mannose feeding. These models have proved suitable to further study the effect of reduced glycosylation during early embryonic development *in vitro* in order to improve our understanding of PMM2-CDG disease pathophysiology.

**Acknowledgments**—We thank Prof. Dr. Gerardy-Schahn, head of the Institute for Cellular Chemistry, Hannover Medical School for providing general laboratory equipment and for careful revision of this manuscript. We thank Prof. Dr. Scheper (Institute of Technical Chemistry, Leibniz University of Hannover) for providing bFGF, RI and CHIR 99021. Thanks to Prof. Dr. Martin, Dr. Zweigerdt (LEBAO, Hannover Medical School) and Dr. Zychlinski (Institute of Experimental Hematology, Hannover Medical School) for providing hiPSCs. We further would like to thank Johannes Zuber (Research Institute of Molecular Pathology, Vienna) for providing the optimized shRNAmir expression cassette and Adrian Schwarzer (Institute of Experimental Hematology, Hannover Medical School) for technical advice on cloning the

lentiviral RNAi vectors. We thank Hanna Möller and Dr. Sarah Konze for continuous laboratory assistance. Thanks to NIGMS Human Genetic Cell Repository for providing PMM2-CDG patient fibroblasts.

\* This work was supported by funding from the Deutsche Forschungsgemeinschaft (DFG, German Research Foundation) for the Cluster of Excellence REBIRTH (From Regenerative Biology to reconstructive Therapy, EXC 62/2). For DH, TC and AS this work was supported by the “Sonderforschungsbereich 738” (SFB738/3) and “Integriertes Forschungs- und Behandlungszentrum Transplantation” (IFB-Tx). For CT this work was supported by the European Union’s Horizon 2020 research and innovation program under the ERA-NET Cofund action N° 643578 – EURO-CDG 2. It was supported by the Bundesministerium für Bildung und Forschung, under the frame of E-Rare-3, the ERA-Net for Research on Rare Diseases. For RH and ER this work was supported by the European Commission (EC) under the project “HighGlycan” (grant no. 278535). For SC and ER this work was supported by the German Federal Ministry of Education and Research (BMBF) under the project “Die Golgi Glykan Fabrik 2.0” (grant identifier 031A557).

 This article contains [supplemental materials](#).

<sup>b</sup> To whom correspondence should be addressed: Institute for Cellular Chemistry, Hannover Medical School, Carl-Neuberg-Straße 1, 30625 Hannover, Germany. Tel.: +49(0)0511/532-8245; Fax: +49(0)511/532-8801; E-mail: buettner.falk@mh-hannover.de.

<sup>c</sup> These authors contributed equally to this study.

## REFERENCES

- Matthijs, G., Schollen, E., Pardon, E., Veiga-Da-Cunha, M., Jaeken, J., Cassiman, J. J., and Van Schaftingen, E. (1997) Mutations in PMM2, a phosphomannomutase gene on chromosome 16p13, in carbohydrate-deficient glycoprotein type I syndrome (Jaeken syndrome). *Nat. Genet.* **16**, 88–92
- Haeuptle, M. A., and Hennet, T. (2009) Congenital disorders of glycosylation: an update on defects affecting the biosynthesis of dolichol-linked oligosaccharides. *Hum. Mutat.* **30**, 1628–1641
- Schollen, E., Kjaergaard, S., Legius, E., Schwartz, M., and Matthijs, G. (2000) Lack of Hardy-Weinberg equilibrium for the most prevalent PMM2 mutation in CDG-Ia (congenital disorders of glycosylation type Ia). *Eur. J. Hum. Genet.* **8**, 367–371
- Matthijs, G., Schollen, E., Bjursell, C., Erlandson, A., Freeze, H., Imtiaz, F., Kjaergaard, S., Martinsson, T., Schwartz, M., Seta, N., Vuillaumier-Barrot, S., Westphal, V., and Winchester, B. (2000) Mutations in PMM2 that cause congenital disorders of glycosylation, type Ia (CDG-Ia). *Hum. Mutat.* **16**, 386–394
- Grunewald, S. (2009) The clinical spectrum of phosphomannomutase 2 deficiency (CDG-Ia). *Biochim. Biophys. Acta* **1792**, 827–834
- Kjaergaard, S., Schwartz, M., and Skovby, F. (2001) Congenital disorder of glycosylation type Ia (CDG-Ia): phenotypic spectrum of the R141H/F119L genotype. *Arch. Dis. Child* **85**, 236–239
- Pirard, M., Matthijs, G., Heykants, L., Schollen, E., Grunewald, S., Jaeken, J., and Van Schaftingen, E. (1999) Effect of mutations found in carbohydrate-deficient glycoprotein syndrome type IA on the activity of phosphomannomutase 2. *FEBS Lett.* **452**, 319–322
- Van Schaftingen, E., and Jaeken, J. (1995) Phosphomannomutase deficiency is a cause of carbohydrate-deficient glycoprotein syndrome type I. *FEBS Lett.* **377**, 318–320
- Gao, N., Shang, J., and Lehrman, M. A. (2005) Analysis of glycosylation in CDG-Ia fibroblasts by fluorophore-assisted carbohydrate electrophoresis: implications for extracellular glucose and intracellular mannose 6-phosphate. *J. Biol. Chem.* **280**, 17901–17909
- Himmelreich, N., Kaufmann, L. T., Steinbeisser, H., Korner, C., and Thiel, C. (2015) Lack of phosphomannomutase 2 affects *Xenopus laevis* morphogenesis and the non-canonical Wnt5a/Ror2 signalling. *J. Inherit. Metab. Dis.* DOI: 10.1007/s10545-015-9874-0
- Cline, A., Gao, N., Flanagan-Steet, H., Sharma, V., Rosa, S., Sonon, R., Azadi, P., Sadler, K. C., Freeze, H. H., Lehrman, M. A., and Steet, R. (2012) A zebrafish model of PMM2-CDG reveals altered neurogenesis and a substrate-accumulation mechanism for N-linked glycosylation deficiency. *Mol. Biol. Cell* **23**, 4175–4187
- Thiel, C., Lubke, T., Matthijs, G., von Figura, K., and Korner, C. (2006) Targeted disruption of the mouse phosphomannomutase 2 gene causes early embryonic lethality. *Mol. Cell Biol.* **26**, 5615–5620
- Schneider, A., Thiel, C., Rindermann, J., DeRossi, C., Popovici, D., Hoffmann, G. F., Grone, H. J., and Korner, C. (2012) Successful prenatal mannose treatment for congenital disorder of glycosylation-Ia in mice. *Nat. Med.* **18**, 71–73
- Vallier, L., and Pedersen, R. A. (2005) Human embryonic stem cells: an in vitro model to study mechanisms controlling pluripotency in early mammalian development. *Stem Cell Rev.* **1**, 119–130
- Takahashi, K., and Yamanaka, S. (2006) Induction of pluripotent stem cells from mouse embryonic and adult fibroblast cultures by defined factors. *Cell* **126**, 663–676
- Inoue, H., Nagata, N., Kurokawa, H., and Yamanaka, S. (2014) iPSCs: a game changer for future medicine. *EMBO J.* **33**, 409–417
- Unternaehrer, J. J., and Daley, G. Q. (2011) Induced pluripotent stem cells for modelling human diseases. *Philos. Trans. R. Soc. Lond B Biol. Sci.* **366**, 2274–2285
- Haase, A., Olmer, R., Schwanke, K., Wunderlich, S., Merkert, S., Hess, C., Zweigerdt, R., Gruh, I., Meyer, J., Wagner, S., Maier, L. S., Han, D. W., Glage, S., Miller, K., Fischer, P., Scholer, H. R., and Martin, U. (2009) Generation of induced pluripotent stem cells from human cord blood. *Cell Stem Cell* **5**, 434–441
- Konze, S. A., van Diepen, L., Schroder, A., Olmer, R., Moller, H., Pich, A., Weissmann, R., Kuss, A. W., Zweigerdt, R., and Buettner, F. F. (2014) Cleavage of E-cadherin and beta-catenin by calpain affects Wnt signaling and spheroid formation in suspension cultures of human pluripotent stem cells. *Mol. Cell Proteomics* **13**, 990–1007
- Warlich, E., Kuehle, J., Cantz, T., Brugman, M. H., Maetzig, T., Galla, M., Filipczyk, A. A., Halle, S., Klump, H., Scholer, H. R., Baum, C., Schroeder, T., and Schambach, A. (2011) Lentiviral vector design and imaging approaches to visualize the early stages of cellular reprogramming. *Mol. Ther.* **19**, 782–789
- Fellmann, C., Hoffmann, T., Sridhar, V., Hopfgartner, B., Muhar, M., Roth, M., Lai, D. Y., Barbosa, I. A., Kwon, J. S., Guan, Y., Sinha, N., and Zuber, J. (2013) An optimized microRNA backbone for effective single-copy RNAi. *Cell Rep.* **5**, 1704–1713
- Sgodda, M., Mobus, S., Hoepfner, J., Sharma, A. D., Schambach, A., Greber, B., Ott, M., and Cantz, T. (2013) Improved hepatic differentiation strategies for human induced pluripotent stem cells. *Curr. Mol. Med.* **13**, 842–855
- Lian, X., Hsiao, C., Wilson, G., Zhu, K., Hazeltine, L. B., Azarin, S. M., Raval, K. K., Zhang, J., Kamp, T. J., and Palecek, S. P. (2012) Robust cardiomyocyte differentiation from human pluripotent stem cells via temporal modulation of canonical Wnt signaling. *Proc. Natl. Acad. Sci. U.S.A.* **109**, E1848–E1857
- Kuehle, J., Turan, S., Cantz, T., Hoffmann, D., Suerth, J. D., Maetzig, T., Zychlinski, D., Klein, C., Steinemann, D., Baum, C., Bode, J., and Schambach, A. (2014) Modified lentiviral LTRs allow Flp recombinase-mediated cassette exchange and in vivo tracing of “factor-free” induced pluripotent stem cells. *Mol. Ther.* **22**, 919–928
- R Development Core Team. (2008) *R: A language and environment for statistical computing*, R Foundation for Statistical Computing, Vienna, Austria
- Risso, D., Schwartz, K., Sherlock, G., and Dudoit, S. (2011) GC-content normalization for RNA-Seq data. *BMC. Bioinformatics.* **12**, 480
- Anders, S., and Huber, W. (2010) Differential expression analysis for sequence count data. *Genome Biol.* **11**, R106
- Korner, C., Lehle, L., and von Figura, K. (1998) Abnormal synthesis of mannose 1-phosphate derived carbohydrates in carbohydrate-deficient glycoprotein syndrome type I fibroblasts with phosphomannomutase deficiency. *Glycobiology* **8**, 165–171
- Thiel, C., Rind, N., Popovici, D., Hoffmann, G. F., Hanson, K., Conway, R. L., Adamski, C. R., Butler, E., Scanlon, R., Lambert, M., Apeshiotis, N., Thiels, C., Matthijs, G., and Korner, C. (2012) Improved diagnostics lead to identification of three new patients with congenital disorder of glycosylation-Ip. *Hum. Mutat.* **33**, 485–487
- Hennig, R., Rapp, E., Kottler, R., Cajic, S., Borowiak, M., and Reichl, U. (2015) N-glycosylation fingerprinting of viral glycoproteins by xCGE-LIF,



- In: Lepenies, B. (ed), Carbohydrate-based vaccines - Methods and protocols, Volume 1331 of the series Methods in Molecular Biology pp 123–143, Springer, New York
31. Kustikova, O. S., Modlich, U., and Fehse, B. (2009) Retroviral insertion site analysis in dominant haematopoietic clones. *Methods Mol. Biol.* **506**, 373–390
  32. Blasco, M. A., Serrano, M., and Fernandez-Capetillo, O. (2011) Genomic instability in iPS: time for a break. *EMBO J.* **30**, 991–993
  33. Zhao, W., Ji, X., Zhang, F., Li, L., and Ma, L. (2012) Embryonic stem cell markers. *Molecules.* **17**, 6196–6236
  34. Chambers, S. M., Fasano, C. A., Papapetrou, E. P., Tomishima, M., Sadelain, M., and Studer, L. (2009) Highly efficient neural conversion of human ES and iPS cells by dual inhibition of SMAD signaling. *Nat. Biotechnol.* **27**, 275–280
  35. Diekmann, U., Lenzen, S., and Naujok, O. (2015) A reliable and efficient protocol for human pluripotent stem cell differentiation into the definitive endoderm based on dispersed single cells. *Stem Cells Dev.* **24**, 190–204
  36. Wilson, P. G., and Stice, S. S. (2006) Development and differentiation of neural rosettes derived from human embryonic stem cells. *Stem Cell Rev.* **2**, 67–77
  37. Viatchenko-Karpinski, S., Fleischmann, B. K., Liu, Q., Sauer, H., Gryshchenko, O., Ji, G. J., and Hescheler, J. (1999) Intracellular Ca<sup>2+</sup> oscillations drive spontaneous contractions in cardiomyocytes during early development. *Proc. Natl. Acad. Sci. U.S.A.* **96**, 8259–8264
  38. Narolska, N. A., Eiras, S., van Loon, R. B., Boontje, N. M., Zaremba, R., Spiegelen, B., Sr., Stoker, W., Huybregts, M. A., Visser, F. C., van, d., V., and Stienen, G. J. (2005) Myosin heavy chain composition and the economy of contraction in healthy and diseased human myocardium. *J. Muscle Res. Cell Motil.* **26**, 39–48
  39. Schwartz, R. J., and Olson, E. N. (1999) Building the heart piece by piece: modularity of cis-elements regulating Nkx2–5 transcription. *Development* **126**, 4187–4192
  40. Kelsey, G. D., Povey, S., Bygrave, A. E., and Lovell-Badge, R. H. (1987) Species- and tissue-specific expression of human alpha 1-antitrypsin in transgenic mice. *Genes Dev.* **1**, 161–171
  41. Jaeken, J., and Matthijs, G. (2001) Congenital disorders of glycosylation. *Annu. Rev. Genomics Hum. Genet.* **2**, 129–151
  42. Fouquaert, E., Smith, D. F., Peumans, W. J., Proost, P., Balzarini, J., Savvides, S. N., and Damme, E. J. (2009) Related lectins from snowdrop and maize differ in their carbohydrate-binding specificity. *Biochem. Biophys. Res. Commun.* **380**, 260–265
  43. Shibuya, N., Goldstein, I. J., Van Damme, E. J., and Peumans, W. J. (1988) Binding properties of a mannose-specific lectin from the snowdrop (*Galanthus nivalis*) bulb. *J. Biol. Chem.* **263**, 728–734
  44. Baenziger, J. U., and Fiete, D. (1979) Structural determinants of concanavalin A specificity for oligosaccharides. *J. Biol. Chem.* **254**, 2400–2407
  45. Huffman, J. E., Pucic-Bakovic, M., Klaric, L., Hennig, R., Selman, M. H., Vuckovic, F., Novokmet, M., Kristic, J., Borowiak, M., Muth, T., Polasek, O., Razzdorov, G., Gornik, O., Plomp, R., Theodoratou, E., Wright, A. F., Rudan, I., Hayward, C., Campbell, H., Deelder, A. M., Reichl, U., Aulchenko, Y. S., Rapp, E., Wuhrer, M., and Lauc, G. (2014) Comparative performance of four methods for high-throughput glycosylation analysis of immunoglobulin G in genetic and epidemiological research. *Mol. Cell Proteomics* **13**, 1598–1610
  46. Kottler, R., Mank, M., Hennig, R., Muller-Werner, B., Stahl, B., Reichl, U., and Rapp, E. (2013) Development of a high-throughput glycoanalysis method for the characterization of oligosaccharides in human milk utilizing multiplexed capillary gel electrophoresis with laser-induced fluorescence detection. *Electrophoresis* **34**, 2323–2336
  47. Ruhaak, L. R., Hennig, R., Huhn, C., Borowiak, M., Dolhain, R. J., Deelder, A. M., Rapp, E., and Wuhrer, M. (2010) Optimized workflow for preparation of APTS-labeled N-glycans allowing high-throughput analysis of human plasma glycomes using 48-channel multiplexed CGE-LIF. *J. Proteome Res.* **9**, 6655–6664
  48. Schwarzer, J., Rapp, E., and Reichl, U. (2008) N-glycan analysis by CGE-LIF: profiling influenza A virus hemagglutinin N-glycosylation during vaccine production. *Electrophoresis* **29**, 4203–4214
  49. Muller-Kuller, U., Ackermann, M., Kolodziej, S., Brendel, C., Fritsch, J., Lachmann, N., Kunkel, H., Lausen, J., Schambach, A., Moritz, T., and Grez, M. (2015) A minimal ubiquitous chromatin opening element (UCOE) effectively prevents silencing of juxtaposed heterologous promoters by epigenetic remodeling in multipotent and pluripotent stem cells. *Nucleic Acids Res.* **43**, 1577–1592
  50. Freeze, H. H. (2001) Update and perspectives on congenital disorders of glycosylation. *Glycobiology* **11**, 129R–143R
  51. Freeze, H. H. (2009) Towards a therapy for phosphomannomutase 2 deficiency, the defect in CDG-Ia patients. *Biochim. Biophys. Acta* **1792**, 835–840
  52. Freeze, H. H., and Schachter, H. (2009) Genetic disorders of glycosylation, In: Varki, A., Cummings, R. D., Esko, J. D., Freeze, H. H., Stanley, P., Bertozzi, C. R., Hart, G. W., and Etzer, M. E. (eds), Essentials of glycobiology, 2nd Ed., Cold Spring Harbor, NY
  53. Apweiler, R., Hermjakob, H., and Sharon, N. (1999) On the frequency of protein glycosylation, as deduced from analysis of the SWISS-PROT database. *Biochim. Biophys. Acta* **1473**, 4–8
  54. Panneerselvam, K., and Freeze, H. H. (1996) Mannose corrects altered N-glycosylation in carbohydrate-deficient glycoprotein syndrome fibroblasts. *J. Clin. Invest.* **97**, 1478–1487
  55. Rush, J. S., Panneerselvam, K., Waechter, C. J., and Freeze, H. H. (2000) Mannose supplementation corrects GDP-mannose deficiency in cultured fibroblasts from some patients with Congenital Disorders of Glycosylation (CDG). *Glycobiology* **10**, 829–835
  56. Yu, J., Vodnyanik, M. A., Smuga-Otto, K., Antosiewicz-Bourget, J., Frane, J. L., Tian, S., Nie, J., Jonsdottir, G. A., Ruotti, V., Stewart, R., Slukvin, I. I., and Thomson, J. A. (2007) Induced pluripotent stem cell lines derived from human somatic cells. *Science* **318**, 1917–1920
  57. Robinton, D. A., and Daley, G. Q. (2012) The promise of induced pluripotent stem cells in research and therapy. *Nature* **481**, 295–305
  58. Rohani, L., Johnson, A. A., Arnold, A., and Stolzing, A. (2014) The aging signature: a hallmark of induced pluripotent stem cells? *Aging Cell* **13**, 2–7
  59. Muller, L. U., Milsom, M. D., Harris, C. E., Vyas, R., Brumme, K. M., Parmar, K., Moreau, L. A., Schambach, A., Park, I. H., London, W. B., Strait, K., Schlaeger, T., Devine, A. L., Grassman, E., D'Andrea, A., Daley, G. Q., and Williams, D. A. (2012) Overcoming reprogramming resistance of Fanconi anemia cells. *Blood* **119**, 5449–5457
  60. Laurent, L. C., Ulitsky, I., Slavin, I., Tran, H., Schork, A., Morey, R., Lynch, C., Harness, J. V., Lee, S., Barrero, M. J., Ku, S., Martynova, M., Semchkin, R., Galat, V., Gottesfeld, J., Izpisia Belmonte, J. C., Murry, C., Keirstead, H. S., Park, H. S., Schmidt, U., Laslett, A. L., Muller, F. J., Nievergelt, C. M., Shamir, R., and Loring, J. F. (2011) Dynamic changes in the copy number of pluripotency and cell proliferation genes in human ESCs and iPSCs during reprogramming and time in culture. *Cell Stem Cell* **8**, 106–118
  61. Chan, E. M., Ratanasirintrao, S., Park, I. H., Manos, P. D., Loh, Y. H., Huo, H., Miller, J. D., Hartung, O., Rho, J., Ince, T. A., Daley, G. Q., and Schlaeger, T. M. (2009) Live cell imaging distinguishes bona fide human iPS cells from partially reprogrammed cells. *Nat. Biotechnol.* **27**, 1033–1037
  62. Pirard, M., Achouri, Y., Collet, J. F., Schollen, E., Matthijs, G., and Van Schaftingen, E. (1999) Kinetic properties and tissular distribution of mammalian phosphomannomutase isozymes. *Biochem. J.* **339** (Pt 1), 201–207
  63. Cromphout, K., Vleugels, W., Heykants, L., Schollen, E., Keldermans, L., Sciot, R., D'Hooge, R., De Deyn, P. P., von Figura, K., Hartmann, D., Korner, C., and Matthijs, G. (2006) The normal phenotype of Pmm1-deficient mice suggests that Pmm1 is not essential for normal mouse development. *Mol. Cell Biol.* **26**, 5621–5635
  64. Satomaa, T., Heiskanen, A., Mikkola, M., Olsson, C., Blomqvist, M., Tiitonen, M., Jaatinen, T., Aitio, O., Olonen, A., Helin, J., Hiltunen, J., Natunen, J., Tuuri, T., Otonkoski, T., Saarinen, J., and Laine, J. (2009) The N-glycome of human embryonic stem cells. *BMC. Cell Biol.* **10**, 42
  65. Dupre, T., Cuer, M., Barrot, S., Barnier, A., Cormier-Daire, V., Munnich, A., Durand, G., and Seta, N. (2001) Congenital disorder of glycosylation Ia with deficient phosphomannomutase activity but normal plasma glycoprotein pattern. *Clin. Chem.* **47**, 132–134
  66. Stibler, H., Blennow, G., Kristiansson, B., Lindehammer, H., and Hagberg, B. (1994) Carbohydrate-deficient glycoprotein syndrome: clinical expression in adults with a new metabolic disease. *J. Neurol. Neurosurg. Psychiatry* **57**, 552–556
  67. Goret, S. S., Dabelic, S., and Dumic, J. (2012) Insights into complexity of congenital disorders of glycosylation. *Biochem. Med.* **22**, 156–170

68. Cummings, R. D., and Etzler, M. E. (2009) Antibodies and lectins in glycan analysis. Varki A, Cummings RD, Esko JD, et al., editors. Cold Spring Harbor (NY): Cold Spring Harbor Laboratory Press: 2009. Chapter 45 Antibodies and Lectins in Glycan Analysis Richard D Cummings and Marilyn E Etzler.
69. He, P., Ng, B. G., Losfeld, M. E., Zhu, W., and Freeze, H. H. (2012) Identification of intercellular cell adhesion molecule 1 (ICAM-1) as a hypoglycosylation marker in congenital disorders of glycosylation cells. *J. Biol. Chem.* **287**, 18210–18217
70. Losfeld, M. E., Soncin, F., Ng, B. G., Singec, I., and Freeze, H. H. (2012) A sensitive green fluorescent protein biomarker of N-glycosylation site occupancy. *FASEB J.* **26**, 4210–4217
71. Freeze, H. H. (2006) Genetic defects in the human glycome. *Nat. Rev. Genet.* **7**, 537–551
72. Hasehira, K., Tatenno, H., Onuma, Y., Ito, Y., Asashima, M., and Hirabayashi, J. (2012) Structural and quantitative evidence for dynamic glycome shift on production of induced pluripotent stem cells. *Mol. Cell Proteomics* **11**, 1913–1923
73. Tatenno, H., Toyota, M., Saito, S., Onuma, Y., Ito, Y., Hiemori, K., Fukumura, M., Matsushima, A., Nakanishi, M., Ohnuma, K., Akutsu, H., Umezawa, A., Horimoto, K., Hirabayashi, J., and Asashima, M. (2011) Glycome diagnosis of human induced pluripotent stem cells using lectin microarray. *J. Biol. Chem.* **286**, 20345–20353
74. Klim, J. R., Li, L., Wrighton, P. J., Piekarczyk, M. S., and Kiessling, L. L. (2010) A defined glycosaminoglycan-binding substratum for human pluripotent stem cells. *Nat. Methods* **7**, 989–994
75. Zhuo, Y., and Bellis, S. L. (2011) Emerging role of alpha2,6-sialic acid as a negative regulator of galectin binding and function. *J. Biol. Chem.* **286**, 5935–5941
76. Zhuo, Y., Chammas, R., and Bellis, S. L. (2008) Sialylation of beta1 integrins blocks cell adhesion to galectin-3 and protects cells against galectin-3-induced apoptosis. *J. Biol. Chem.* **283**, 22177–22185
77. Korner, C., Lehle, L., and von Figura, K. (1998) Carbohydrate-deficient glycoprotein syndrome type 1: correction of the glycosylation defect by deprivation of glucose or supplementation of mannose. *Glycoconj. J.* **15**, 499–505
78. Lancot, P. M., Gage, F. H., and Varki, A. P. (2007) The glycans of stem cells. *Curr. Opin. Chem. Biol.* **11**, 373–380
79. Thiel, C., Messner-Schmitt, D., Hoffmann, G. F., and Korner, C. (2012) Screening for congenital disorders of glycosylation in the first weeks of life. *J. Inherit. Metab. Dis.*
80. Mills, K., Mills, P. B., Clayton, P. T., Johnson, A. W., Whitehouse, D. B., and Winchester, B. G. (2001) Identification of alpha(1)-antitrypsin variants in plasma with the use of proteomic technology. *Clin. Chem.* **47**, 2012–2022
81. de la Morena-Barrio ME, Sevivas, T. S., Martinez-Martinez, I., Minano, A., Vicente, V., Jaeken, J., and Corral, J. (2012) Congenital disorder of glycosylation (PMM2-CDG) in a patient with antithrombin deficiency and severe thrombophilia. *J. Thromb. Haemost.* **10**, 2625–2627
82. Dupre, T., Barnier, A., de Lonlay, P., Cormier-Daire, V., Durand, G., Codogno, P., and Seta, N. (2000) Defect in N-glycosylation of proteins is tissue-dependent in congenital disorders of glycosylation Ia. *Glycobiology* **10**, 1277–1281
83. Ichikawa, M., Scott, D. A., Losfeld, M. E., and Freeze, H. H. (2014) The metabolic origins of mannose in glycoproteins. *J. Biol. Chem.* **289**, 6751–6761
84. Ceroni, A., Maass, K., Geyer, H., Geyer, R., Dell, A., and Haslam, S. M. (2008) GlycoWorkbench: a tool for the computer-assisted annotation of mass spectra of glycans. *J. Proteome. Res.* **7**, 1650–1659
85. Varki, A., Cummings, R. D., Esko, J. D., Freeze, H. H., Stanley, P., Marth, J. D., Bertozzi, C. R., Hart, G. W., and Etzler, M. E. (2009) Symbol nomenclature for glycan representation. *Proteomics.* **9**, 5398–5399