

Figure S1

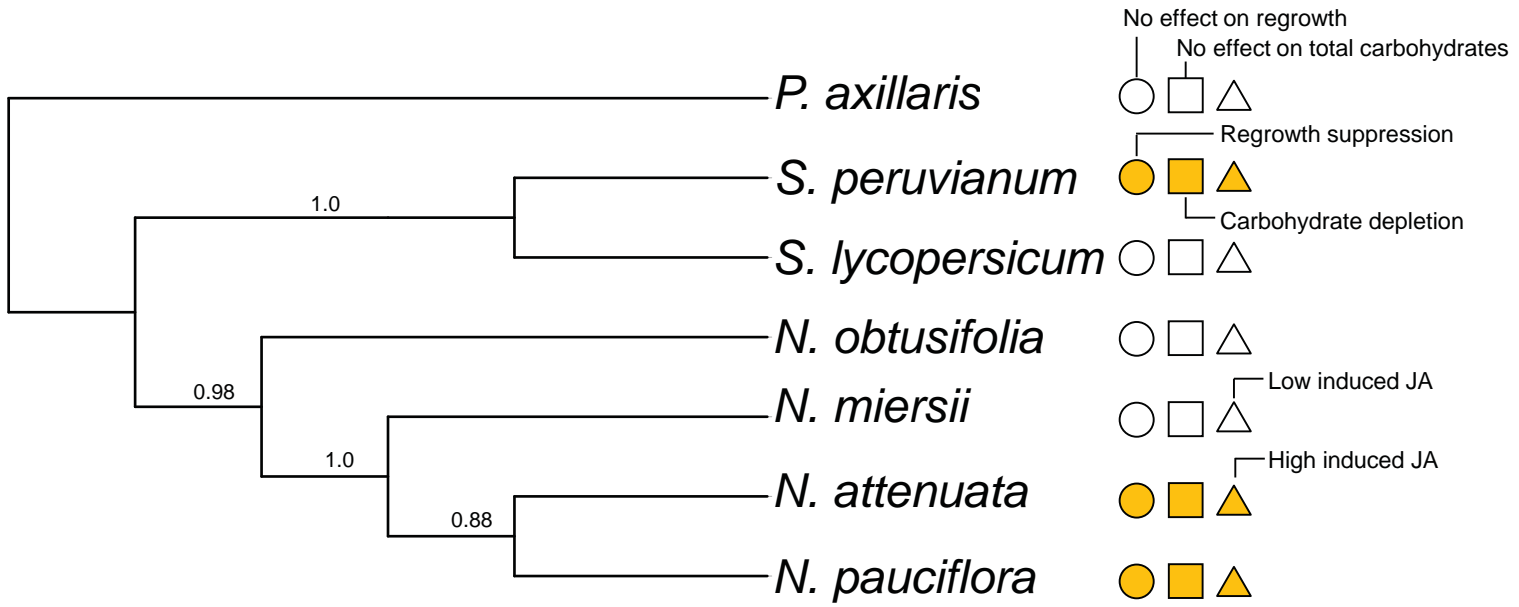


Figure S2

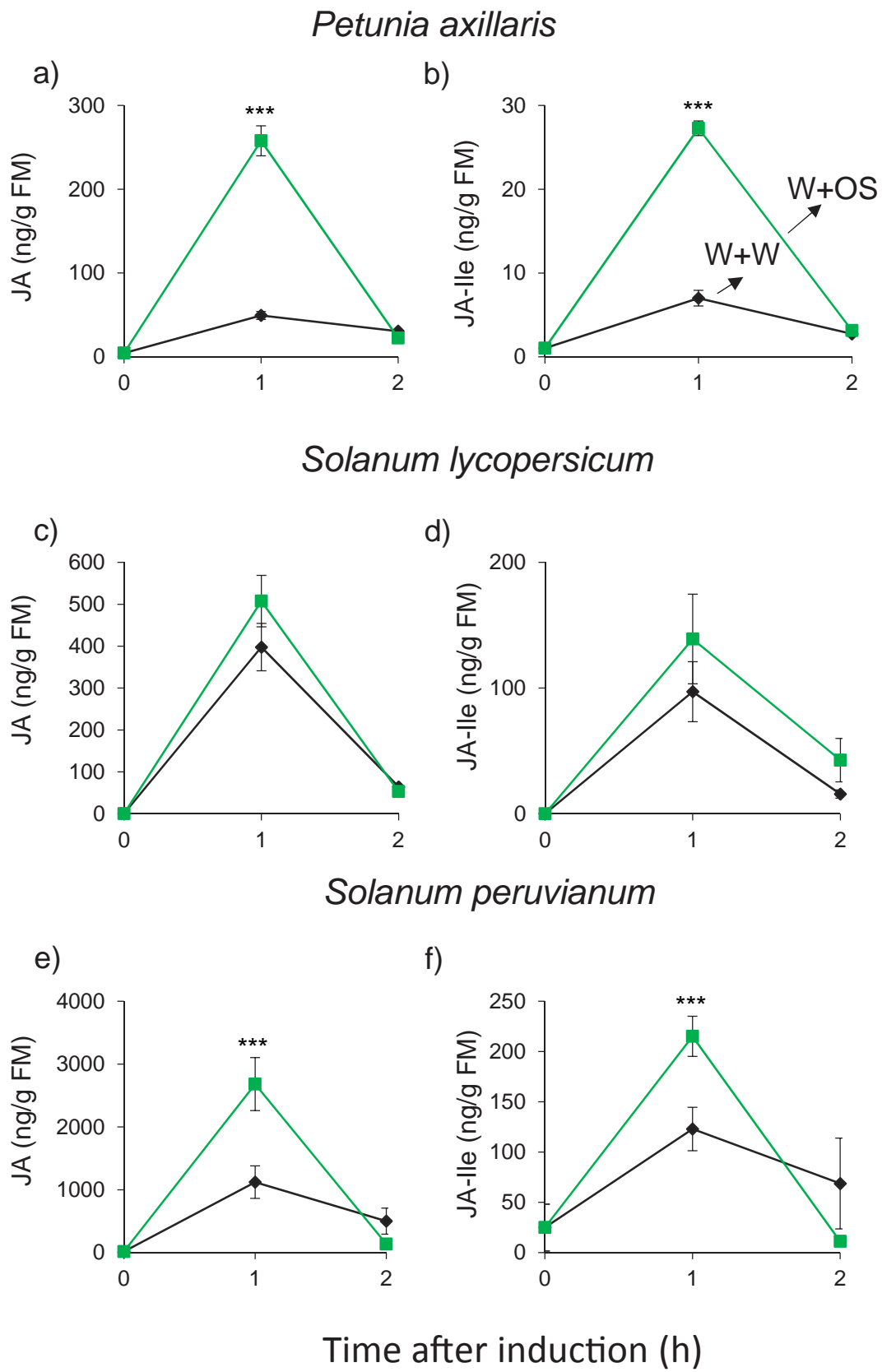


Figure S3

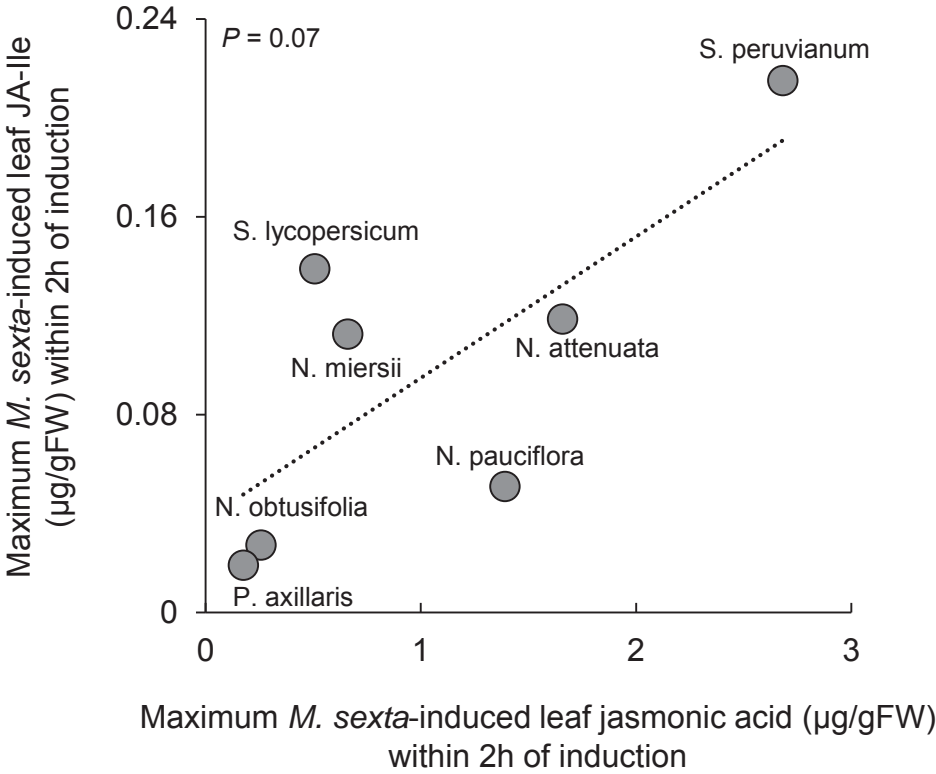


Table S1. Gene bank accession numbers of internal transcribed spacer (ITS) regions of nuclear 5.8S ribosomal DNA (ITS1 and 2).

Plant Species	ITS1 and 2
<i>N. attenuata</i>	AJ492427.1
<i>N. miersii</i>	AJ492429.1
<i>N. obtusifolia</i>	GQ120451.1
<i>N. pauciflora</i>	AJ492428.1
<i>P. axillaris</i>	AJ300213.1
<i>S. lycopersicum</i>	KC213749.1
<i>S. peruvianum</i>	AJ300210.1

Table S2. Comparison of maximum simulated *M. sexta* attack induced jasmonic acid (JA) and jasmonoyl-L-isoleucine (JA-Ile) levels within 2 h after elicitation across seven solanaceous species.

Species	Maximum induced JA within 2h (ng/gFW)	Maximum induced JA-Ile within 2h (ng/gFW)	Data from
<i>N. obtusifolia</i>	175.98 ± 15.96	19.2 ± 3.00	Xu <i>et al.</i> 2015
<i>P. axillaris</i>	257.73 ± 17.98	27.28 ± 0.86	This study
<i>S. lycopersicum</i>	507.58 ± 61.53	139.01 ± 35.63	This study
<i>N. miersii</i>	661.61 ± 81.33	112.61 ± 24.22	Xu <i>et al.</i> 2015
<i>N. pauciflora</i>	1390.80 ± 162.99	50.98 ± 3.75	Xu <i>et al.</i> 2015
<i>N. attenuata</i>	1659.55 ± 158.66	118.68 ± 5.55	Xu <i>et al.</i> 2015
<i>S. peruvianum</i>	2681.30 ± 422.37	215.11 ± 19.94	This study