



# Carbon–nitrogen interactions in idealized simulations with JSBACH (version 3.10)

Daniel S. Goll<sup>1,a</sup>, Alexander J. Winkler<sup>2,3</sup>, Thomas Raddatz<sup>2</sup>, Ning Dong<sup>3,5</sup>, Ian Colin Prentice<sup>4,6</sup>, Philippe Ciais<sup>1</sup>, and Victor Brovkin<sup>2</sup>

<sup>1</sup>Le Laboratoire des Sciences du Climat et de l'Environnement, IPSL-LSCE CEA/CNRS/UVSQ Saclay, Gif sur Yvette, France

<sup>2</sup>Max Planck Institute for Meteorology, Hamburg, Germany

<sup>3</sup>International Max Planck Research School on Earth System Modeling, Hamburg, Germany

<sup>4</sup>Department of Biological Sciences, Macquarie University, North Ryde, NSW 2109, Australia

<sup>5</sup>Faculty of Agriculture and Environment, Department of Environmental Sciences, University of Sydney, NSW 2006, Australia

<sup>6</sup>AXA Chair in Biosphere and Climate Impacts, Department of Life Sciences, Imperial College London, Silwood Park Campus, Buckhurst Road, Ascot SL5 7PY, UK

<sup>a</sup>formerly at: Max Planck Institute for Meteorology, Hamburg, Germany

Correspondence to: Daniel S. Goll (daniel.goll@lsce.ipsl.fr)

Received: 17 December 2016 – Discussion started: 9 January 2017

Revised: 7 April 2017 – Accepted: 14 April 2017 – Published: 22 May 2017

**Abstract.** Recent advances in the representation of soil carbon decomposition and carbon–nitrogen interactions implemented previously into separate versions of the land surface scheme JSBACH are here combined in a single version, which is set to be used in the upcoming 6th phase of coupled model intercomparison project (CMIP6).

Here we demonstrate that the new version of JSBACH is able to reproduce the spatial variability in the reactive nitrogen-loss pathways as derived from a compilation of  $\delta^{15}\text{N}$  data ( $R = 0.76$ , root mean square error (RMSE) = 0.2, Taylor score = 0.83). The inclusion of carbon–nitrogen interactions leads to a moderate reduction (–10 %) of the carbon-concentration feedback ( $\beta_{\text{L}}$ ) and has a negligible effect on the sensitivity of the land carbon cycle to warming ( $\gamma_{\text{L}}$ ) compared to the same version of the model without carbon–nitrogen interactions in idealized simulations (1 % increase in atmospheric carbon dioxide per year). In line with evidence from elevated carbon dioxide manipulation experiments, pronounced nitrogen scarcity is alleviated by (1) the accumulation of nitrogen due to enhanced nitrogen inputs by biological nitrogen fixation and reduced losses by leaching and volatilization. Warming stimulated turnover of organic nitrogen further counteracts scarcity.

The strengths of the land carbon feedbacks of the recent version of JSBACH, with  $\beta_{\text{L}} = 0.61 \text{ Pg ppm}^{-1}$  and  $\gamma_{\text{L}} = -27.5 \text{ Pg } ^\circ\text{C}^{-1}$ , are 34 and 53 % less than the averages of CMIP5 models, although the CMIP5 version of JSBACH simulated  $\beta_{\text{L}}$  and  $\gamma_{\text{L}}$ , which are 59 and 42 % higher than multi-model average. These changes are primarily due to the new decomposition model, indicating the importance of soil organic matter decomposition for land carbon feedbacks.

## 1 Introduction

The version of the Max Planck Institute Earth System Model (MPI-ESM) used in the 5th phase of the coupled model intercomparison project (CMIP5) experienced pronounced biases in simulated soil carbon (Todd-Brown et al., 2013), soil hydrology (Hagemann and Stacke, 2014), and the lack of carbon–soil nutrient interactions (Zaehle et al., 2014a; Wieder et al., 2015), hampering the reliability of the simulated response of land system to increasing carbon dioxide ( $\text{CO}_2$ ), climate and land use and land cover changes. Recent model developments addressed these issues (Goll et al., 2012, 2015; Hagemann and Stacke, 2014) in separate ver-

sions of the land surface scheme of the MPI-ESM, JSBACH, but have not been yet combined in a single model version.

The projected carbon balance in JSBACH was substantially affected by recent model developments: the implementation of carbon–nitrogen–phosphorus interactions reduced accumulated land carbon uptake by 25 % between 1860–2100 under a business as usual scenario (Goll et al., 2012), while the implementation of a new decomposition model (YASSO) reduced the accumulated land carbon uptake by about 60 % in the same period (Goll et al., 2015). The exchange of the former CENTURY-type soil decomposition model (Parton et al., 1993) with the YASSO decomposition model (Tuomi et al., 2008, 2009, 2011) improved the present-day state of the carbon cycle compared to observations as well as the response of decomposition to soil warming, and substantially reduced the uncertainties of land use change emissions for a given land use change scenario (Goll et al., 2015). The strong impact on the carbon balance of each of both developments underlines the importance of combining them in a single version.

The capacity of land ecosystems to increase their nitrogen storage as well as to enhance recycling of nitrogen in organic matter are major constraints on their ability to increase carbon storage under elevated CO<sub>2</sub> concentrations (Hungate et al., 2003; Thomas et al., 2015; Liang et al., 2016). The respective response patterns of nitrogen processes governing the balance and turnover of organic nitrogen are crucial (Niu et al., 2016) to assess the likelihood of the occurrence of (progressive) nitrogen limitation (Luo et al., 2004). Recent advances in the interpretation of soil  $\delta^{15}\text{N}$  global data sets provide a promising tool (Houlton et al., 2015; Zhu and Riley, 2015) by allowing for a more detailed evaluation of the nitrogen-loss pathways in land carbon–nitrogen models than previously done (e.g., Parida, 2011; Goll et al., 2012).

Since future scenarios of CO<sub>2</sub> concentrations differ among CMIP phases, an idealized setup of an annual increase in CO<sub>2</sub> concentration by 1 % is used to foster the analysis of the carbon cycle feedbacks among models, and to compare emerging properties of different model versions in various CMIPs (Eyring et al., 2016). We adopt this approach taking advantage of existing simulations of climatic changes in this idealized setup of the CMIP5 intercomparison (Arora et al., 2013) to drive the land surface model JSBACH uncoupled from the atmosphere and ocean components of the Earth system model.

This article documents the modifications to the soil carbon decomposition (Goll et al., 2015) and nitrogen cycle (Parida, 2011; Goll et al., 2012) submodels and the combination of both developments in a recent version of JSBACH including an advanced soil hydrological scheme (Hagemann and Stacke, 2014), scheduled to be used in CMIP6. We further analyzed the state of the nitrogen cycle using soil  $\delta^{15}\text{N}$  data and quantified the carbon cycle feedbacks to increasing CO<sub>2</sub> concentrations and climate change. The analysis aims at facilitating the interpretation of the models dynamics in the up-

coming round of CMIP experiments (Eyring et al., 2016), and allows for a straightforward comparison to the result from the previous round of CMIP (Taylor et al., 2012).

## 2 Methods

### 2.1 Model description

The implementation of the nitrogen cycle and the soil carbon and litter decomposition model YASSO is described in detail in Parida (2011), Goll et al. (2012) and Goll et al. (2015), respectively. In the following, a brief summary of the major concepts is given and afterwards the modifications to the original developments needed to combine them are documented in detail. The notation applied here follows Goll et al. (2012, 2015) and a scheme of the cycling of carbon and nitrogen as well as their interactions are given in Fig. 1.

The decomposition model (YASSO) is based on a compilation of litter decomposition and soil carbon data and distinguish organic matter fractions according to litter size and solubility (Tuomi et al., 2008, 2009, 2011). In JSBACH we use two litter size classes, which correspond to litter from non-lignified and lignified plant material (Goll et al., 2015). Each of the two litter classes is further refined into four solubility classes (acid soluble ( $C_A$ ), water soluble ( $C_W$ ), ethanol soluble ( $C_E$ ), non-soluble ( $C_N$ )) (Eq. 1). One additional pool ( $C_H$ ) represents humic, slowly decomposing substances.

The interactions between nitrogen availability and carbon fluxes, namely primary productivity and decomposition, are based on the concept of CO<sub>2</sub>-induced nutrient limitation (CNL) (Goll et al., 2012). In this framework, we distinguish between CNL and background nutrient limitation. The latter is assumed to be indirectly considered in the original parametrization of carbon cycle processes as they are based on measurements in present-day ecosystems and therefore reflect present-day nutrient conditions. CNL is an additional nutrient limitation caused by the increase in atmospheric CO<sub>2</sub> and is computed dynamically according to nutrient supply and demand. In case microbial and vegetation nitrogen demand cannot be met by the supply, all carbon fluxes of which the donor compartment has a higher C : N ratio than the receiving pool (i.e., the fluxes of carbon from the solubility classes pools to the humus pool) are downregulated. The concept of CNL allows one to introduce carbon–nitrogen interactions to YASSO, as the needed conditions are met; e.g., the parametrization of YASSO indirectly reflects present-day nutrient effects on decomposition as it is based on leaf litter experiments.

Following Goll et al. (2012), CNL affects the decomposition of all pools except the slowly decomposing nutrient-rich pool (Eqs. 2–5). The litter decomposition data on which YASSO is based is not suited to link the fate of nitrogen in litter to the respective solubility pools. Therefore, we assume one single nitrogen pool representing all nitrogen linked to

the four carbon solubility pools per litter class (Eq. 7). This can be refined in the future if appropriate data become available.

The nitrogen cycling is primarily driven by carbon fluxes using constant N-to-C ratios of organic pools (Eqs. 6–7), with the exceptions of the non-lignified litter pool (Eq. 8) (Parida, 2011). Further exceptions are the processes linking the terrestrial carbon cycle with the atmosphere (biological nitrogen fixation and denitrification) and the aquatic systems (leaching), which are computed either as substrate limited (Eqs. 16–17) or, for the case of biological nitrogen fixation (Eq. 15), as driven by demand due to the ample supply of  $N_2$  in the atmosphere (Parida, 2011). The nitrogen cycle and its interactions with the carbon cycle are not modified. The only exception is that the turnover times of the nitrogen litter and soil organic matter pools are derived from the YASSO decomposition model (Eq. 10) instead of the former decomposition model.

All parameters and variables are given in Tables 1 and 2.

### 2.1.1 Nitrogen effect on decomposition

Matrix  $\mathbf{C}$  describes the soil carbon pools (A, W, E, N) of the two litter classes ( $i$ ) in JSBACH, excluding recalcitrant humic substances ( $C_H$ ):

$$\mathbf{C}_i = \begin{pmatrix} C_{A,i} \\ C_{W,i} \\ C_{E,i} \\ C_{N,i} \end{pmatrix}. \quad (1)$$

The dynamics of the soil carbon pools are described as

$$\frac{d\mathbf{C}_i}{dt} = \mathbf{A}_p \mathbf{k}_i(\mathbf{F}) \mathbf{C}_i + \mathbf{I}_i, \quad (2)$$

where  $\mathbf{A}_p$  is the mass flow matrix,  $\mathbf{k}_i(\mathbf{F})$  is a diagonal matrix of the decomposition rates  $\mathbf{k}_i(\mathbf{F}) = \text{diag}(k_{A,i}, k_{W,i}, k_{E,i}, k_{N,i})(\mathbf{F})$  as a function of climatic conditions ( $\mathbf{F}$ ), and matrix  $\mathbf{I}_i$  is the carbon input of type  $i$  to the soil. The dynamics of the humus pool ( $C_H$ ) are described as

$$\frac{dC_H}{dt} = p_H \sum_{i=1}^N \mathbf{k}_i(\mathbf{F}) \mathbf{C}_i - k_H C_H, \quad (3)$$

where  $p_H$  is the relative mass flow parameter and  $k_H$  the decomposition rate of the humus pool. A detail description of decomposition can be found in the supplementary information of Goll et al. (2015), here we only focus on the modification of the original implementation.

The climate dependence of the decomposition rate factor  $k_{j,i}$  of the carbon pools was originally implemented by Goll et al. (2015) based on Tuomi et al. (2008) as

$$k_{j,i}(\mathbf{F}) = \alpha_{j,i} \exp(\beta_1 T + \beta_2 T^2)(1 - \exp(\gamma P)), \quad (4)$$

where  $T$  is air temperature and  $P$  is precipitation,  $\beta_1$ ,  $\beta_2$ ,  $\gamma$  are parameters, and  $\alpha_{j,i}$  are decomposition rates at reference conditions ( $T = 0$  and  $P \rightarrow \infty$ ) of pool  $i$  of litter class  $j$ .  $\alpha_{j,i}$  is the product of reference decomposition rate  $r_j$  of solubility class  $j$  and the litter diameter  $d_i$  of litter class  $i$ . YASSO uses precipitation instead of the more direct driver of soil moisture due the lack of adequate soil moisture observation to relate the decomposition data the model is based on (Tuomi et al., 2008).

We introduced a scaling factor, namely the nitrogen limitation factor ( $f_{\text{limit}}^N$ ), to account for the downregulation of decomposition when nitrogen is in short supply

$$k_{j,i}(\mathbf{F}) = f_{\text{limit}}^N \alpha_{j,i} \exp(\beta_1 T + \beta_2 T^2)(1 - \exp(\gamma P)), \quad (5)$$

where  $f_{\text{limit}}^N$  is calculated based on a supply and demand approach (Parida, 2011; Goll et al., 2012): in a first step, potential carbon fluxes are computed from which the gross mineralization, immobilization and plant uptake of mineral nitrogen is diagnosed. In a second step, all fluxes consuming nitrogen (donor compartment has a higher C:N ratio than the receiving pool as well as plant uptake) are downregulated in case nitrogen demand cannot be met by the nitrogen supply. Hereby, a common scalar ( $f_{\text{limit}}^N$ ) (see Appendix A) is used, thereby no assumption about the relative competitive strengths of microbial and plant consumption has to be made. In case nitrogen demand is met by the supply, the fluxes computed in the first step are taken as actual ones without any modification.

### 2.1.2 Dynamics of nitrogen in litter and soil organic matter

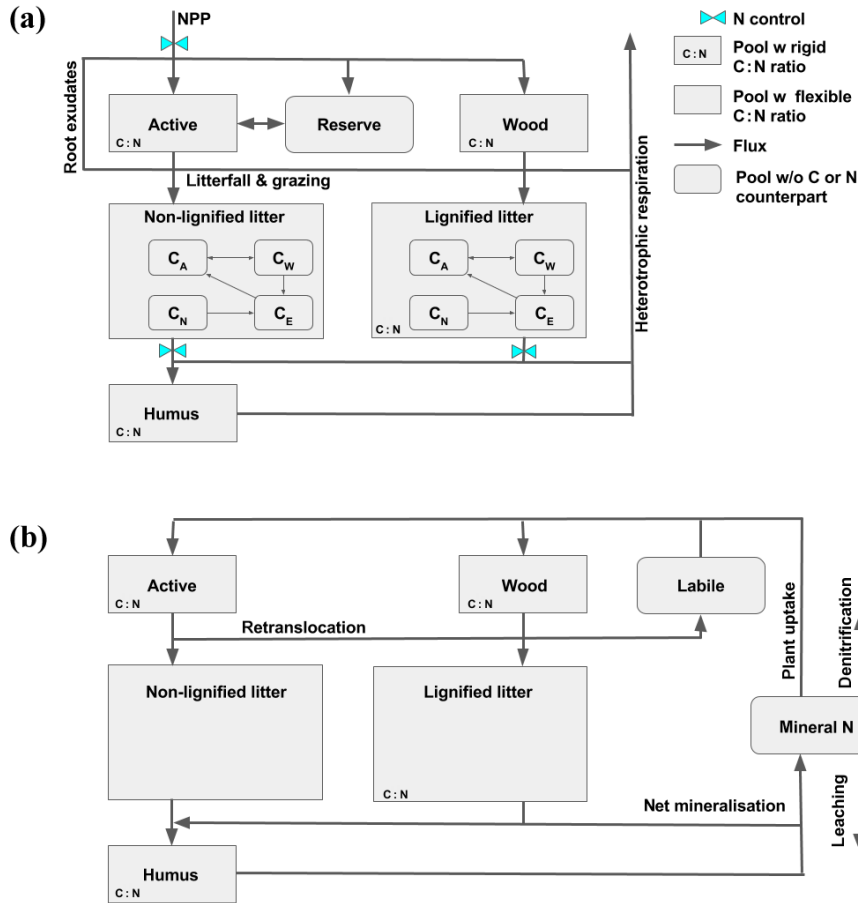
Nitrogen in litter and soil organic matter is separated into three pools, namely slowly decomposing organic matter (humus)  $C_H$ , lignified litter and fast-decomposing organic matter  $C_{1,w}$ , as well as non-lignified litter and fast-decomposing organic matter  $C_{1,a}$  (Goll et al., 2012). We assigned each of the three nitrogen pools to one or more corresponding YASSO pools (Table 3). A refinement of the representation of nitrogen in decomposing material following strictly the carbon classification is not straightforward as the carbon pools (A, W, E, N) defined by their respective solubility characteristics do not correspond to substance classes with distinguished stoichiometries.

In JSBACH, nitrogen in compartments with a fixed N-to-C ratio, namely nitrogen in lignified litter ( $N_{lw}$ ) as well as nitrogen in slowly decomposing organic matter ( $N_H$ ), are derived from the corresponding YASSO carbon pools ( $C_{j,i}$ ) by

$$N_H = r_H C_H, \quad (6)$$

$$N_{lw} = r_{lw}(C_{A,w} + C_{W,w} + C_{E,w} + C_{N,w}), \quad (7)$$

where  $r_H$  is the N-to-C ratio of former slow carbon pool ( $C_H$ ) now applied to the humus pool of YASSO, and  $r_{lw}$  of former lignified (woody) litter pool ( $C_{1,w}$ ) now applied to the sum of the solubility class pools for lignified litter of YASSO.



**Figure 1.** Schematic representation of carbon (a) and nitrogen (b) cycling in JSBACH. Vegetation is represented by four pools: “active” (leaves and non-lignified tissue) and “wood” (stem and branches), “reserve” (sugar and starches) and “labile” (mobile nitrogen) (Goll et al., 2012). Dead organic matter is represented by “non-lignified litter”, “lignified litter” (lignified litter and fast-decomposing soil organic matter), and “humus” (slow-decomposing organic matter) (Raddatz et al., 2007). All organic matter pools have fixed C:N ratios, except the pools “reserve”, “labile” and “non-lignified litter”. While the pools “reserve” and “labile” have no corresponding nitrogen pool, the C:N ratio of the latter pool varies according to the balance between immobilization demand and supply. The carbon in the litter compartment is further refined into the acid-soluble (A), water-soluble (W), ethanol-soluble (E), and non-soluble (N) compounds (Goll et al., 2015), which have no C:N ratio assigned. Soil mineral nitrogen is represented by a single pool (soil mineral pool). The opposing triangle marks carbon fluxes that are downregulated in case the nitrogen demand exceeds the nitrogen supply.

The dynamics of nitrogen in non-lignified litter and fast-decomposing organic matter ( $N_{la}$ ) was not modified from the original nitrogen-enabled version of JSBACH (Parida, 2011) and are given by

$$\frac{dN_{la}}{dt} = r_{la} F_{ab-la}^C + (1 - \beta_3) \epsilon N_a - f_{limit}^N d_{la} \times N_{la}, \quad (8)$$

where the first term describes the nitrogen influx from active, non-lignified plant tissue ( $N_a$ ), the second term describes the flux of nitrogen from herbivores excrements, which is not directly available to biota, and the third term arises from the nitrogen released by biological mineralization of litter and fast-decomposing soil organic matter. We assume that active plant material ( $N_a$ ) is consumed by herbivores at a constant rate ( $\epsilon$ ) and immediately excreted (Parida, 2011). We separate the excrement into fast-decomposing ( $1 - \beta_3$ ) and labile

( $\beta_3$ ) nitrogen compounds, the first enters the non-lignified litter pool ( $N_{la}$ ) and the latter the soil mineral nitrogen pool (Eq. 11).

The decomposition rate  $d_{la}$  of nitrogen in litter and fast-decomposing soil organic matter equals the decomposition rate of the sum of the YASSO carbon pools  $C_{A,a} + C_{W,a} + C_{E,a} + C_{N,a}$  and is given by

$$\frac{d(C_{A,a} + C_{W,a} + C_{E,a} + C_{N,a})}{dt} = d_{la} (C_{A,a} + C_{W,a} + C_{E,a} + C_{N,a}) \quad (9)$$

so that  $d_{la}$  can be derived from

$$d_{la} = \frac{C_{A,a}(t+1) + C_{W,a}(t+1) + C_{E,a}(t+1) + C_{N,a}(t+1)}{C_{A,a}(t) + C_{W,a}(t) + C_{E,a}(t) + C_{N,a}(t)} - 1. \quad (10)$$

**Table 1.** Variables of the model.

Variable	Units	Description
$P$	$\text{mday}^{-1}$	30-day average of daily precipitation
$T$	$^{\circ}\text{C}$	30-day average of daily 2 m air temperature
$C_{j,i}$	$\text{mol}(\text{C})\text{m}^{-2}$	soil organic carbon of solubility class $j$ and litter class $i$
$N_x$	$\text{mol}(\text{N})\text{m}^{-2}$	nitrogen in compartment $x$
$\overline{\text{NPP}}$	$\text{mol}(\text{C})\text{m}^{-2}\text{day}^{-1}$	annual average of daily net primary productivity
$F_{x>y}^{\text{C}}$	$\text{mol}(\text{C})\text{m}^{-2}\text{day}^{-1}$	daily flux of carbon from compartment $x$ to compartment $y$
$F_{\text{extr}}$	$\text{mol}(\text{C})\text{m}^{-2}\text{day}^{-1}$	daily flux of nitrogen from/to the atmosphere and to aquatic systems
$F_{\text{leach}}$	$\text{mol}(\text{C})\text{m}^{-2}\text{day}^{-1}$	daily flux of nitrogen leached to aquatic systems
$F_{\text{denit}}$	$\text{mol}(\text{C})\text{m}^{-2}\text{day}^{-1}$	daily flux of nitrogen lost to the atmosphere by denitrification
BNF	$\text{mol}(\text{N})\text{m}^{-2}\text{day}^{-1}$	daily nitrogen inputs by biological nitrogen fixation
$D_x$	$\text{mol}(\text{N})\text{m}^{-2}\text{day}^{-1}$	nitrogen demand of vegetation ( $x = \text{veg}$ ) or immobilization ( $x = \text{micr}$ )
$f_{\text{limit}}^{\text{N}}$	–	nitrogen limitation factor
$d_x$	$\text{day}^{-1}$	decomposition rate of nitrogen in compartment $x$
$k_{j,i}$	$\text{day}^{-1}$	decomposition rate of solubility class $j$ and litter class $i$
$k_{\text{H}}$	$\text{day}^{-1}$	decomposition rate of humus pool
$\epsilon$	$\text{day}^{-1}$	consumption rate by herbivores
$f_{\text{h2o}}$	–	daily fraction of soil water lost due to runoff and drainage
$\alpha$	–	soil moisture stress on biological processes

As we calculate potential decomposition fluxes in a first step to derive nitrogen demand (see Goll et al., 2012) we know the state of pools for time  $t$  and  $t + 1$ .

The dynamics of the soil mineral nitrogen ( $N_{\text{smin}}$ ) was not modified and are given – as originally formulated by Parida (2011) – by

$$\frac{dN_{\text{smin}}}{dt} = F_{\text{extr}} + \beta_3 \epsilon N_{\text{a}} + d_{\text{H}} N_{\text{H}} + (r_{\text{w}} - r_{\text{lw}}) F_{\text{wp>lw}}^{\text{C}} - f_{\text{limit}}^{\text{N}} (D_{\text{veg}} + D_{\text{micr}}), \quad (11)$$

where  $F_{\text{extr}}$  is the net of fluxes connecting the compartments considered in the model and outside (here: biological dinitrogen ( $\text{N}_2$ ) fixation, leaching,  $\text{N}_2$  and nitrous oxide ( $\text{N}_2\text{O}$ ) emissions (Eq. 14),  $\beta_3 \epsilon N_{\text{a}}$  is flux of labile nitrogen from herbivores excrements, and  $D_{\text{micr}}$  and  $D_{\text{veg}}$  are the nitrogen demands of vegetation and microbes, respectively. Due to the lower nitrogen content of litter compared to humus, the decomposition of lignified and non-lignified litter corresponds to a net immobilization of nitrogen, which is part of the  $D_{\text{micr}}$ . The term  $(r_{\text{w}} - r_{\text{lw}}) F_{\text{wp>lw}}^{\text{C}}$  represents nitrogen leaching from freshly shedded wood given by the decomposition and the stoichiometries assigned to wood ( $r_{\text{w}}$ ) and lignified litter ( $r_{\text{lw}}$ ). The decomposition rate of nitrogen in the humus pool ( $N_{\text{H}}$ ),  $d_{\text{H}}$ , equals the decomposition rate of the corresponding YASSO carbon pool ( $C_{\text{H}}$ ),  $k_{\text{H}}$ . This rate according to Eq. (4) is given by

$$k_{\text{H}}(\mathbf{F}) = \alpha_{\text{H}} \exp(\beta_1 T + \beta_2 T^2) (1 - \exp(\gamma P)). \quad (12)$$

Note that there is no nutrient effect on the decomposition of  $N_{\text{H}}$ , and  $k_{\text{H}}$  is calculated exactly as described in Goll et al. (2015).

For the calculation of the microbial (soil) nutrient demand ( $D_{\text{micr}}$ ), we substituted the pools  $C_{1,\text{a}}$  and  $C_{\text{H}}$  with the corresponding YASSO pools in Eq. (15) of Goll et al. (2012):

$$D_{\text{micr}} = (r_{\text{H}} - \frac{N_{\text{la}}}{(C_{\text{A,a}} + C_{\text{W,a}} + C_{\text{E,a}} + C_{\text{N,a}})}) F_{\text{la>s}}^{\text{C}} + (r_{\text{H}} - r_{\text{lw}}) F_{\text{lw>s}}^{\text{C}} - \frac{N_{\text{la}}}{(C_{\text{A,a}} + C_{\text{W,a}} + C_{\text{E,a}} + C_{\text{N,a}})}) F_{\text{la>a}}^{\text{C}} - r_{\text{lw}} F_{\text{lw>a}}^{\text{C}}. \quad (13)$$

The fluxes  $F_{\text{la>s}}^{\text{C}}$  and  $F_{\text{lw>s}}^{\text{C}}$  are the net fluxes of carbon to the humus from the solubility pools (AWEN) of non-lignified and lignified litter, respectively.  $F_{\text{la>a}}^{\text{C}}$  and  $F_{\text{lw>a}}^{\text{C}}$  are the respective sums of respiration fluxes of the AWEN pools.

## 2.2 The processes governing the terrestrial nitrogen balance in JSBACH

Nitrogen enters terrestrial ecosystems by biological nitrogen fixation (BNF), as well as atmospheric deposition, while nitrogen is lost via leaching ( $F_{\text{leach}}$ ), erosion (omitted in JSBACH) and denitrification ( $F_{\text{denit}}$ ):

$$F_{\text{extr}} = \text{BNF} - F_{\text{leach}} - F_{\text{denit}}. \quad (14)$$

BNF in global models is commonly represented by an empirical relationship based on a compilation of site measurements (Cleveland et al., 1999). Due to the lack of a process-based alternative, we use this approach as described in Parida (2011) despite its shortcomings (Thomas et al., 2013; Sullivan et al., 2014; Wieder et al., 2015). In this approach BNF is derived from the annual average of daily net plant productivity (NPP) ( $\overline{\text{NPP}}$ ) using the empirical relationship between

**Table 2.** Parameters of the model.

Parameter	Value	Units	Description	Source
$\beta_1$	0.095	$^{\circ}\text{C}^{-1}$	Temperature dependence of decomposition	Goll et al. (2015)
$\beta_2$	$-1.4 \times 10^{-3}$	$^{\circ}\text{C}^{-2}$	Temperature dependence of decomposition	Goll et al. (2015)
$\gamma_1$	-1.21	$\text{m}^{-1}$	Precipitation dependence of decomposition	Goll et al. (2015)
$\alpha_{j,i}$	*	$\text{day}^{-1}$	decomposition rates at references conditions ( $T = 0$ and $P \rightarrow \infty$ ) of pool $i$ of litter class $j$	Tuomi et al. (2011)
$\alpha_{\text{H}}$	$4.383 \times 10^{-6}$	$\text{day}^{-1}$	decomposition rates at references conditions ( $T = 0$ K and $P \rightarrow \infty$ ) of humus pool	Tuomi et al. (2011)
$r_{\text{s}}$	10.0	$\text{mol}(\text{N})\text{mol}^{-1}(\text{C})$	N-to-C ratio of slowly decomposing organic matter	Goll et al. (2012)
$r_{\text{lw}}$	330.0	$\text{mol}(\text{N})\text{mol}^{-1}(\text{C})$	N-to-C ratio of lignified litter	Goll et al. (2012)
$r_{\text{la}}$	55.0	$\text{mol}(\text{N})\text{mol}^{-1}(\text{C})$	N-to-C ratio of non-lignified litter	Goll et al. (2012)
$r_{\text{w}}$	150.0	$\text{mol}(\text{N})\text{mol}^{-1}(\text{C})$	N-to-C ratio of lignified biomass	Goll et al. (2012)
$\beta_3$	0.7	–	fraction of nitrogen in excrement in labile form	Parida (2011)
$f_{\text{emp}}$	$-3.0 \times 10^{-3}$	$\text{day g}^{-1}(\text{C})$	NPP dependence of biological nitrogen fixation	Cleveland et al. (1999)
$f_{\text{bnf}}$	0.7	$\text{g}(\text{N})\text{m}^{-2}\text{day}^{-1}$	scaling factor of biological nitrogen fixation	this study
$f_{\text{s}}$	0.1	–	fraction of soil mineral nitrogen in soil solution	this study
$k_{\text{denit}}$	$2.0 \times 10^{-3}$	–	daily fraction of soil mineral nitrogen lost by denitrification	Parida (2011)
$w_{\text{C}}$	12.011	$\text{g}(\text{N})\text{m}^{-2}\text{day}^{-1}$	standard atomic weight of carbon	
$w_{\text{N}}$	14.007	$\text{g}(\text{N})\text{mol}^{-1}(\text{N})$	standard atomic weight of nitrogen	
$t$	1	day	time step	

\*  $\alpha_{j,i}$  is an array and values can be found in Tuomi et al. (2011).

**Table 3.** The nitrogen pools and the corresponding carbon pools for humus (H) and lignified (woody) (w) and non-lignified (active) (a) plant material.

Nitrogen	Carbon
$N_{\text{H}}$	$C_{\text{H}}$
$N_{\text{lw}}$	$C_{\text{A,w}} + C_{\text{W,w}} + C_{\text{E,w}} + C_{\text{N,w}}$
$N_{\text{la}}$	$C_{\text{A,a}} + C_{\text{W,a}} + C_{\text{E,a}} + C_{\text{N,a}}$

BNF and evapotranspiration (Thornton et al., 2007):

$$\text{BNF} = (f_{\text{bnf}} \times (1 - e^{(f_{\text{emp}} \times w_{\text{C}} \overline{\text{NPP}})}) \frac{w_{\text{N}}}{w_{\text{C}}}, \quad (15)$$

where  $f_{\text{emp}} = -0.003 \text{ day g}^{-1}(\text{C})$  is an empirical relationship from Cleveland et al. (1999),  $f_{\text{bnf}} = 0.7 \text{ g}(\text{N})\text{m}^{-2}\text{day}^{-1}$  is a calibrated constant to achieve a global sum of BNF of  $100 \text{ Mt yr}^{-1}$  for a simulated NPP of  $65 \text{ Gt yr}^{-1}$  based on estimates for present day (Galloway et al., 2013; Ciais et al., 2013), and  $w_{\text{N}}$  and  $w_{\text{C}}$  the standard atomic weights of nitrogen and carbon, respectively.

The losses of nitrogen are given priority over immobilization and plant uptake each time step. Following Meixner and Bales (2002), Thornton et al. (2007) and Parida (2011), daily losses by leaching are derived from dissolved nitrogen in soil water and the fraction of soil water lost to rivers per day ( $f_{\text{h2o}}$ ) assuming a homogeneous distribution of mineral nitrogen ( $N_{\text{smin}}$ ) in the soil volume:

$$F_{\text{leach}} = f_{\text{s}} N_{\text{smin}} f_{\text{h2o}}, \quad (16)$$

where  $f_{\text{s}}$  is the fraction of mineral nitrogen ( $N_{\text{smin}}$ ) in soil solution.  $f_{\text{h2o}}$  is computed dynamically accounting for evapotranspiration, precipitation, and changes in the soil water storage using a five layer soil hydrological scheme (Hagemann and Stacke, 2014)

Following Parida (2011) and Goll et al. (2012), daily losses by denitrification are assumed to be at most 0.02 % ( $k_{\text{denit}} = 0.002 \text{ day}^{-1}$ ) of the soil mineral ( $N_{\text{smin}}$ ):

$$F_{\text{denit}} = \alpha k_{\text{denit}} N_{\text{smin}}, \quad (17)$$

where  $\alpha$  is a JSBACH internal indicator of soil moisture stress [0–1], which is dynamically computed from soil moisture and used to scale biological activity (Raddatz et al., 2007).

### 2.3 Calibration and parametrization of the model

The parametrization of YASSO (version 3.20) and of the nitrogen cycle in JSBACH was not changed and is described in Goll et al. (2012, 2015). The only exception is the recalibration of losses of nitrogen by leaching to the new hydrological model in JSBACH (Hagemann and Stacke, 2014). This is achieved, following Goll et al. (2012), by tuning the fraction of mineral nitrogen in soil solution ( $f_{\text{s}}$ ) so that the assumption regarding the absence of CNL in the pre-industrial state is met, which is equal to a negligible (< 2 %) effect of nitrogen on global net primary productivity and carbon storage. We tuned the fraction of soil mineral nitrogen in soil solution to  $f_{\text{s}} = 0.1$ , which is comparable to fractions

used in other models (Wang et al., 2010) as well as in observations (Hedin et al., 1995).

## 2.4 Simulation setup

We force the land surface model JSBACH with half hourly climatic data simulated by the MPI-ESM instead of running JSBACH coupled with the atmospheric and ocean components of the MPI-ESM. Therefore, our simulations, in contrast to simulations of the MPI-ESM, do not account for the feedback between land and atmosphere with respect to the water and energy cycle. However, the resulting inconsistencies between climate and land surface should not change the results of the present study and are anyway partly implicit to the underlying CMIP5 simulations because of the prescribed atmospheric CO<sub>2</sub> levels in case of biogeochemical feedbacks (Taylor et al., 2012). For the sake of simplicity, we will refer to the JSBACH simulations driven by the climate from respective ESM simulations, with the respective label of the ESM simulations.

The climatic forcing is derived from MPI-ESM simulations performed for the CMIP5 project (Table 4) (Taylor et al., 2012).

### 2.4.1 Spin-up

The concept of CNL assumes that nitrogen effects on the carbon cycle are marginal under pre-industrial conditions. Therefore, the cycles of carbon and nitrogen can be equilibrated in a two-step procedure in which the carbon cycle is first brought into equilibrium (less than 1 % change in global stocks per decade) using the climatic forcing from the pre-industrial control run (Goll et al., 2012). In a second step, we then initialize the nitrogen pools using the prescribed C : N ratios and the equilibrated carbon stocks as well as extremely high mineral nitrogen pools. The model is run again with the climatic forcing from the pre-industrial control run to equilibrate mineral nitrogen dynamics using the same criterion as for the first step. The resulting length of the simulation is 5.5 and 2.6 kyr for step one and step two, respectively. Atmospheric nitrogen depositions are neglected.

### 2.4.2 1 % CO<sub>2</sub> increase experiment and climate feedback factors

To analyze the effect of nitrogen limitation on the response of the land carbon cycle to increasing CO<sub>2</sub> concentration and climate change, we perform simulations with JSBACH with and without activated nitrogen cycle (Table 4). The simulations are forced with the climatic conditions from a set of 140 yr long CMIP5 simulations with the MPI-ESM in which atmospheric CO<sub>2</sub> concentration increases at a rate of 1 % yr<sup>-1</sup> from pre-industrial values until concentration quadruples (Arora et al., 2013).

The set of MPI-ESM simulations consist of a simulation where increasing CO<sub>2</sub> affects the climate but not the terres-

trial biogeochemistry (radiatively coupled), a second simulation where increasing CO<sub>2</sub> affects the terrestrial biogeochemistry but not the climate (biogeochemically coupled), and a third simulation where increasing CO<sub>2</sub> affects both climate and biogeochemistry (fully coupled). The biogeochemically coupled and the radiatively coupled simulations allow us to disentangle the carbon-concentration feedback  $\beta_L$  and carbon–climate feedback  $\gamma_L$ , respectively (Friedlingstein et al., 2006; Arora et al., 2013).  $\beta_L$  is derived from the biogeochemically coupled simulations by dividing the difference in the total land carbon between the first and the last decade by the difference in the atmospheric CO<sub>2</sub> concentration of the same periods.  $\gamma_L$  is derived from the radiatively coupled simulations by dividing the difference in the total land carbon between the first and the last decade by the difference in global land temperature of the same periods. The MPI-ESM simulations do not include the confounding effects of changes in land use, non-CO<sub>2</sub> greenhouse gases, aerosols, etc., and so provide a controlled experiment with which to compare carbon climate interactions in line with the approach by Arora et al. (2013). The model version also does not include dynamic vegetation model and disturbances, such as fire. Natural vegetation cover is prescribed following approach by Pongratz et al. (2008). Cropland and pasture map for 1850 is taken from harmonized land use data set by Hurtt et al. (2011).

## 2.5 Analysis

### 2.5.1 Pre-industrial state

We average the model data of last 3 decades of the spin-up simulations to derive the pre-industrial state. Differences between model and observation are given by the subtraction of the observation with the simulation. The fraction of denitrification losses to total losses is computed by dividing the annual flux of denitrification by the sum of the annual fluxes of denitrification and leaching. Simulated and observation loss fractions are compared using Pearson correlation coefficients, root mean square error (RMSE), and Taylor scores (Taylor, 2001).

### 2.5.2 Nitrogen-loss pathway data

$\delta^{15}\text{N}$  data measurements are one of the few sources of spatially extensive data relevant to the nitrogen cycle (Houlton et al., 2015) as one can infer information about the nitrogen pathways. Houlton et al. (2015) derived the fraction of nitrogen loss in gaseous form ( $f_{\text{denit}}$ ) based on Amundson et al. (2003) best-fitting multiple regression equation for soil  $\delta^{15}\text{N}$  as a function of mean annual temperature (MAT) and mean annual precipitation (MAP). The data set used to generate this equation consisted of 29 samples, and the coefficient of determination was 0.39. Amundson et al. (2003) remarked that “pending the availability of more soil  $\delta^{15}\text{N}$  analyses, the

**Table 4.** Simulations performed with JSBACH with and without carbon–nitrogen interactions using climatic forcing from MPI-ESM simulations performed for the CMIP5 project (Taylor et al., 2012).

Acronym	C–N interactions	climatic forcing	description
C	without	1pctCO2	1 % yr <sup>-1</sup> increase in CO <sub>2</sub> (to quadrupling)
C <sub>β</sub>	without	esmFdbkl	Carbon cycle sees piControl CO <sub>2</sub> concentration, but radiation sees 1 % yr <sup>-1</sup> rise
C <sub>γ</sub>	without	esmFixClim1	Radiation sees piControl CO <sub>2</sub> concentration, but carbon cycle sees 1 % yr <sup>-1</sup> rise
CN	with	1pctCO2	1 % yr <sup>-1</sup> increase in CO <sub>2</sub> (to quadrupling)
CN <sub>β</sub>	with	esmFdbkl	Carbon cycle sees piControl CO <sub>2</sub> concentration, but radiation sees 1 % yr <sup>-1</sup> rise
CN <sub>γ</sub>	with	esmFixClim1	Radiation sees piControl CO <sub>2</sub> concentration, but carbon cycle sees 1 % yr <sup>-1</sup> rise

present Figure ... represents our best estimate of trends ... in global soil  $\delta^{15}\text{N}$  values” (p. 5). We have updated this analysis in three ways: (a) by including a larger number (659) of soil  $\delta^{15}\text{N}$  samples; (b) by substituting an annually integrated index of temperature-related microbial activity for MAT, and an index of leaching (derived from runoff) for MAP, i.e., using indices more closely related to the governing processes; and (c) by using nonlinear regression to fit a statistical model that is explicitly based on the isotopic mass balance equation of Houlton and Bai (2009).

The fraction of N loss in gaseous form ( $f_{\text{denit}}$ ) was estimated using the principle described by, e.g., Houlton and Bai (2009) and Bai et al. (2012), but using a process-based statistical model for the relationship between soil  $\delta^{15}\text{N}$  data and environmental predictors fitted to publicly available data on soil  $\delta^{15}\text{N}$  (Patiño et al., 2009; Cheng et al., 2009; McCarthy and Pataki, 2010; Fang et al., 2011, 2013; Hilton et al., 2013; Peri et al., 2012; Viani et al., 2011; Sommer et al., 2012; Yi and Yang, 2007). It was assumed that soil  $\delta^{15}\text{N}$  reflects the source (atmospheric)  $\delta^{15}\text{N}$  modified by isotopic discrimination that occurs during leaching (slight) and gaseous losses (much larger). For simplicity, the source  $\delta^{15}\text{N}$  was assumed to be zero and discrimination during leaching was neglected. Mean annual runoff ( $q$ , in mm) was estimated from precipitation and potential evapotranspiration following (Zhang et al., 2004), with  $\omega = 3$ . Following Xu-Ri et al. (2008), we assumed that leaching losses increase to a maximum dependent on soil water capacity, yielding an annual runoff factor  $f(q)$ :

$$f(q) = \frac{q}{q + W_{\text{max}}}, \quad (18)$$

where  $W_{\text{max}} = 150$  mm. Mean monthly soil temperatures ( $T_{\text{m}}$ , in K) were estimated for 0.25 m depth following Campbell and Norman (1998). We assigned a generic activation energy of  $E_{\text{a}} = 55 \text{ kJ mol}^{-1} \text{ K}^{-1}$  (Canion et al., 2014) and summed the monthly index values

$$f_{\text{m}}(T_{\text{m}}) = \exp\left(\frac{E_{\text{a}}}{R_{\text{gas}}}\left(\frac{1}{T_{\text{ref}}} - \frac{1}{T_{\text{m}}}\right)\right) \quad (19)$$

over the 12 months

$$f(T) = \sum_{m=1}^{12} f_{\text{m}}(T_{\text{m}}) \quad (20)$$

yielding the annual soil temperature factor  $f(T)$ , where  $T_{\text{ref}} = 293 \text{ K}$ .

The data were then fitted via  $\epsilon$  the gaseous discrimination factor and a constant  $k$  by nonlinear least-squares regression to the relationship

$$\delta = \delta_0 + \epsilon \left(1 + k \left(\frac{f(q)}{f(T)}\right)\right)^{-1}, \quad (21)$$

where  $\delta$  is soil  $\delta^{15}\text{N}$ ,  $\delta_0$  is the  $\delta^{15}\text{N}$  of the N inputs. Assuming the leaching discrimination factor is 0,  $f_{\text{denit}}$  can be expressed as

$$f_{\text{denit}} = \frac{\delta - \delta_0}{\epsilon} \quad (22)$$

from the first principle (Houlton and Bai, 2009). Rearranging Eqs. (21) and (22) we get

$$f_{\text{denit}} = \left(1 + k \left(\frac{f(q)}{f(T)}\right)\right)^{-1}. \quad (23)$$

A spatial map of  $f_{\text{denit}}$  was derived from the empirical relationship between temperature, runoff and  $f_{\text{denit}}$  using simulated values of  $f(q)$  and  $f_{\text{m}}(T_{\text{m}})$  from JSBACH. Thereby, model biases in climate are accounted for in the data-derived  $f_{\text{denit}}$ , which allows for a straightforward comparison with simulated  $f_{\text{denit}}$ . In addition, we derived maps of  $f_{\text{denit}}$  based on monthly grids of observed mean climate from 1961 to 1990 covering the global land surface at a 10 min spatial resolution (CRU CL2.0) (New et al., 2002), which are shown in Fig. C1.



### 3 Results and discussion

#### 3.1 Model evaluation: pre-industrial state

The model simulates nitrogen stocks and fluxes under pre-industrial conditions well within the wide range of the few available observation-based estimates (Table 5). Most of the estimates are for present-day conditions and thus are not directly comparable due to the human influence on the nitrogen cycle (Galloway et al., 2013).

The organic nitrogen stocks and fluxes are given by the prescribed C:N stoichiometry and the state variables of the carbon cycle and thus are not affected by the changes we introduced here, except for non-lignified litter and fast-decomposing soil organic matter, which shows in general good agreement with observed C:N ratios for most biomes (see Appendix B). Mineralization of organic nitrogen is the major source of nitrogen for vegetation and the simulated flux is less than existing model-based estimates for present day ranging between 980 and 1030 M $\text{tyr}^{-1}$  (Smith et al., 2014; Zaehle et al., 2010). In models, nitrogen mineralization is solely a by-product of decomposition of soil organic carbon and we thus attribute the differences between simulated mineralization to the use of YASSO decomposition model compared to the use of the CENTRUY decomposition model (Smith et al., 2014; Zaehle et al., 2010), as the soil C:N stoichiometries are comparable among models. We refer to the evaluation of the carbon cycle in JSBACH elsewhere (Anav et al., 2013; Goll et al., 2015), as the concept of CO<sub>2</sub>-induced nutrient limitation prevents an effect of nitrogen on the carbon cycle under pre-industrial CO<sub>2</sub> concentrations.

Estimates of global fluxes and stocks of nitrogen are often lacking or associated with large uncertainties; thus, a detailed analysis of the simulated nitrogen cycle is hampered (Zaehle, 2013). However, recent advances in the use of  $\delta^{15}\text{N}$  data (Houlton et al., 2015), which are one of the few sources of spatially extensive data relevant to the nitrogen cycle, allow for the evaluation of the respective importance of nitrogen-loss pathways in space. Due to the different environmental controls of the loss pathways, which are on first order represented in the model, we can test the underlying assumptions by comparing the simulated fraction of denitrification losses to total nitrogen losses ( $f_{\text{denit}}$ ) to  $f_{\text{denit}}$  reconstructed from  $\delta^{15}\text{N}$  data. However, this comparison does not allow one to draw any conclusion about the magnitude of total losses.

The reconstructed  $f_{\text{denit}}$  maps (Figs. C1 and 2) presented here are generally similar to those presented by Houlton et al. (2015), with high fractions (ca. 80 %) in the tropics and mid-latitude deserts, a strong gradient of decreasing fractions with decreasing temperature towards high altitudes and latitudes, and values in the range 0–20 % reached in cold, wet climates in the north. For a detailed discussion of differences see Appendix C.

In comparison with the reconstructed fractional gaseous loss from simulated climate (Fig. 2a), we find that the model is in good agreement (Pearson  $R = 0.76$ , RMSE = 0.2, Taylor score = 0.83). The model underestimates high values of  $f_{\text{denit}}$  and overestimate low values (Fig. C2). In regions with cold winter temperatures where denitrification losses are small the model overestimates denitrification losses (Fig. 2c). These model biases likely derive from the simplistic representation of denitrification as a function of soil moisture and substrate availability, which omits effects of temperature (Butterbach-Bahl et al., 2013). Additionally, other omitted factors like oxygen concentration, soil pH, mineralogy and transport processes (Butterbach-Bahl et al., 2013) might contribute to the bias.

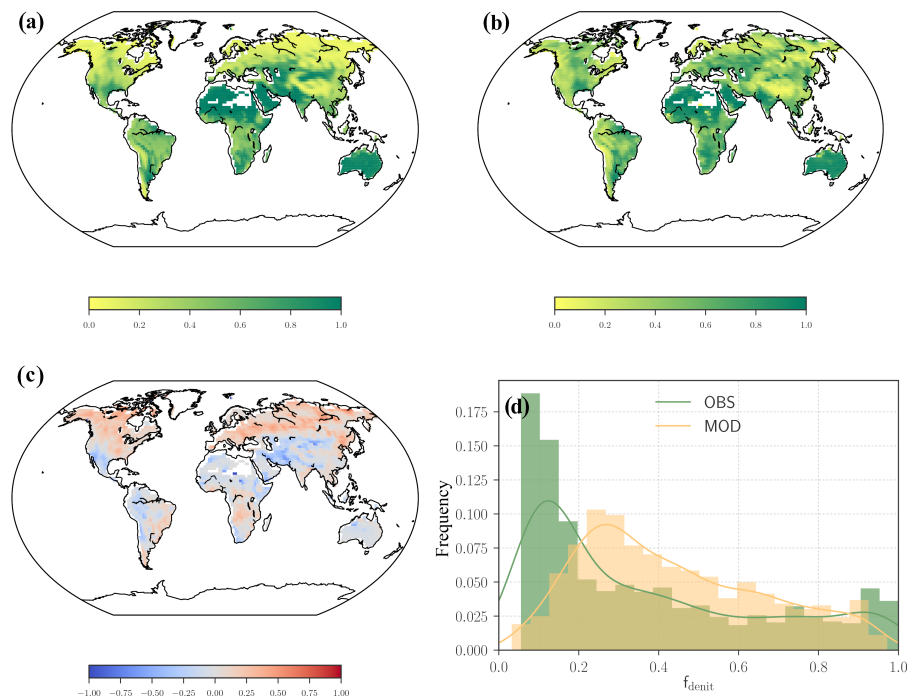
#### 3.2 Changes in the land carbon cycle in the 1 % CO<sub>2</sub> increase simulations

JSBACH simulates a strong increase in NPP due to increasing CO<sub>2</sub> from pre-industrial level to 4× pre-industrial level (Fig. 3). The simulated increase in NPP of 16.0 % for a rise in atmospheric CO<sub>2</sub> from 370 to 550 ppm is somewhat lower than the estimated increase of 23 % from four free-air carbon dioxide enrichment (FACE) experiments (Norby et al., 2005) (Table 6). A lower increase than in the FACE experiment can be expected as the long-term effect of elevated CO<sub>2</sub> is likely to be less than the one derived from short duration FACE experiments (Norby et al., 2010) on early successional forests (Norby et al., 2015). The simulated increase in gross primary productivity (GPP) of 23.1 % for an increase in atmospheric CO<sub>2</sub> concentration from the level of the year 1900 to 2013 is close to the 25 % increase for the same increase in CO<sub>2</sub> estimated from intramolecular isotope distributions (isotopomers), a methodology for detecting shifts in plant carbon metabolism over long periods (Ehlers et al., 2015).

The increase in NPP translates to an increase in carbon storage of approximately 600 Gt by end of the biogeochemically coupled simulation (Fig. 3). Climate change, in particular increasing temperature, overall has a slightly negative effect on global NPP: the carbon losses by autotrophic respiration in low latitudes outweigh the increases in NPP in temperature-limited ecosystems. Globally, warming stimulates the decomposition of soil organic matter (not shown), which leads to a smaller increase in carbon storage in the fully coupled simulation compared to the biogeochemically coupled simulation, and even a reduction in carbon storage in the radiatively coupled simulations. The effect of CO<sub>2</sub> and climate change on land carbon storage is much less pronounced in the recent version of JSBACH than in the CMIP5 version, and the responses of the new version lie well within the range of CMIP5 models (Arora et al., 2013). The more moderate response can mainly be attributed to the recent improvement in respect to the carbon cycle and are discussed in detail later.

**Table 5.** Comparison of simulated net primary productivity and biomass carbon as well nitrogen stocks and fluxes for pre-industrial conditions with observation-based estimates for 1850 and present day.

	Simulated	Observation-based		
	1850	1850	present day	reference
NPP ( $\text{Gt yr}^{-1}$ )	65.1	–	50–56	Ito (2011)
Biomass carbon (Gt)	514.7	–	470–650	Saugier and Roy (2001); Ciais et al. (2013)
Biomass nitrogen (Gt)	4.6	–	3.5	Schlesinger (1997)
Mineral nitrogen (Gt)	1.3	–	–	
Total nitrogen (Gt)	63.6	–	60–75	Galloway et al. (2013)
Leaching ( $\text{Mtyr}^{-1}$ )	50.0	70	13–180	Galloway et al. (2004, 2013)
Denitrification ( $\text{Mtyr}^{-1}$ )	49.2	–	43–290	Galloway et al. (2013)
BNF ( $\text{Mtyr}^{-1}$ )	98.3	40–120	100–139	Galloway et al. (2004); Vitousek et al. (2013)
Mineralization ( $\text{Mtyr}^{-1}$ )	717.3	–	–	

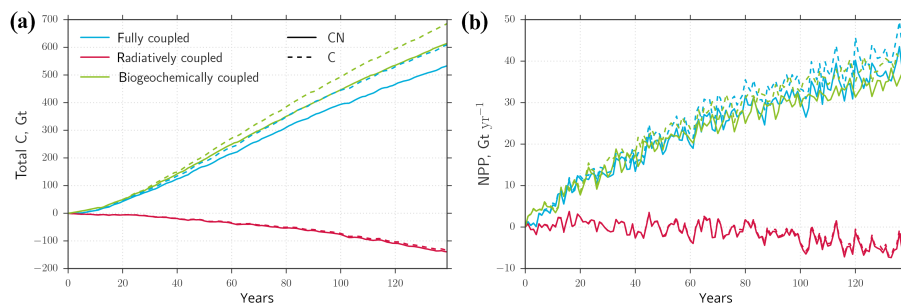
**Figure 2.** Comparison of simulated and reconstructed nitrogen lost by denitrification as a fraction of total nitrogen losses ( $f_{\text{denit}}$ ). Shown are  $f_{\text{denit}}$  reconstructed from  $\delta^{15}\text{N}$  measurements and simulated climate (a),  $f_{\text{denit}}$  as simulated (b), the difference between simulated and reconstructed  $f_{\text{denit}}$  (c), as well as the frequency distribution of simulated (yellow) and reconstructed (green)  $f_{\text{denit}}$  (d).

### 3.3 Changes in the land nitrogen cycle in the 1 % $\text{CO}_2$ increase simulations

Increasing atmospheric  $\text{CO}_2$  concentration leads to the accumulation of nitrogen in the terrestrial system (Fig. 4a), due to elevated inputs by BNF (Fig. 4c) in combination with reduced losses by leaching and denitrification (Fig. 4e, f). The increasing primary productivity and the subsequent incorporation of soil mineral nitrogen are the main drivers behind the accumulation. Increasing NPP (Fig. 3) directly stimulates the demand-driven process of BNF and therefore BNF rates increase nearly as strong as NPP (50 % compared to 59 % by

end of the simulations). The decline in soil mineral nitrogen (Fig. 4b) due to the incorporation of nitrogen in accumulating biomass leads to reduced losses by leaching and denitrification.

An increase in the nitrogen stock by 8.5 % was found in a 15 yr ecosystem-scale  $\text{CO}_2$  enrichment experiment (Shi et al., 2016), which is more pronounced than the simulated increase in the nitrogen stock of 3.2 % for a comparable increase in  $\text{CO}_2$  (year 29–69; 369–551 ppm). A strong stimulation of BNF by 44 %, with a strong decline in leaching by 42 % and no significant changes in denitrification, min-



**Figure 3.** Changes in total land carbon (a) and global net primary productivity (b) in the set of 1 % CO<sub>2</sub> increase simulations with (solid line) and without (dashed line) carbon–nitrogen interactions.

**Table 6.** Simulated response ratios of gross and net primary productivity to elevated CO<sub>2</sub> in comparison with observation-based estimates.

Response ratio	Simulated	Observed	Reference
GPP <sub>396</sub> / GPP <sub>295</sub>	1.23 ± 0.03	1.25	Ehlers et al. (2015)
NPP <sub>550</sub> / NPP <sub>370</sub>	1.16 ± 0.03	1.23 ± 0.02	Norby et al. (2005)

eralization and soil organic nitrogen were found in a compilation of CO<sub>2</sub> enrichment experiments (Liang et al., 2016). However, the representativeness of these findings was questioned recently (Rütting, 2017). In addition to that, CO<sub>2</sub> was increased abruptly in CO<sub>2</sub> enrichment experiments while it increased gradually in our simulations. As the different nitrogen processes have different response patterns, they are likely to react differently to an abrupt than to a gradual increase in CO<sub>2</sub>. Although the relative contributions of reduced losses and increased inputs to an accumulation remain somewhat elusive due to methodological biases (Rütting, 2017) and limited data, an accumulation of nitrogen under elevated CO<sub>2</sub> is a plausible scenario.

We find that the processes governing the nitrogen balance operate on different timescales (Fig. 5). The mineral nitrogen stocks decline from 1.33 to 1.06 Gt during the first 35 yr and thereby reduce the substrate-driven nitrogen losses (Fig. 5) from 98 to 83 Mt yr<sup>-1</sup>. However, losses by leaching start to increase afterwards and are higher by the end of the simulation than at the start. While the reduction in losses and gains in inputs contribute in equal parts to the accumulation in the first decades of the simulation, BNF dominates the accumulation afterwards (Fig. 5). This highlights the importance of long-term manipulation experiments for improving our understanding about the long-term effects of increasing CO<sub>2</sub> on the terrestrial biosphere.

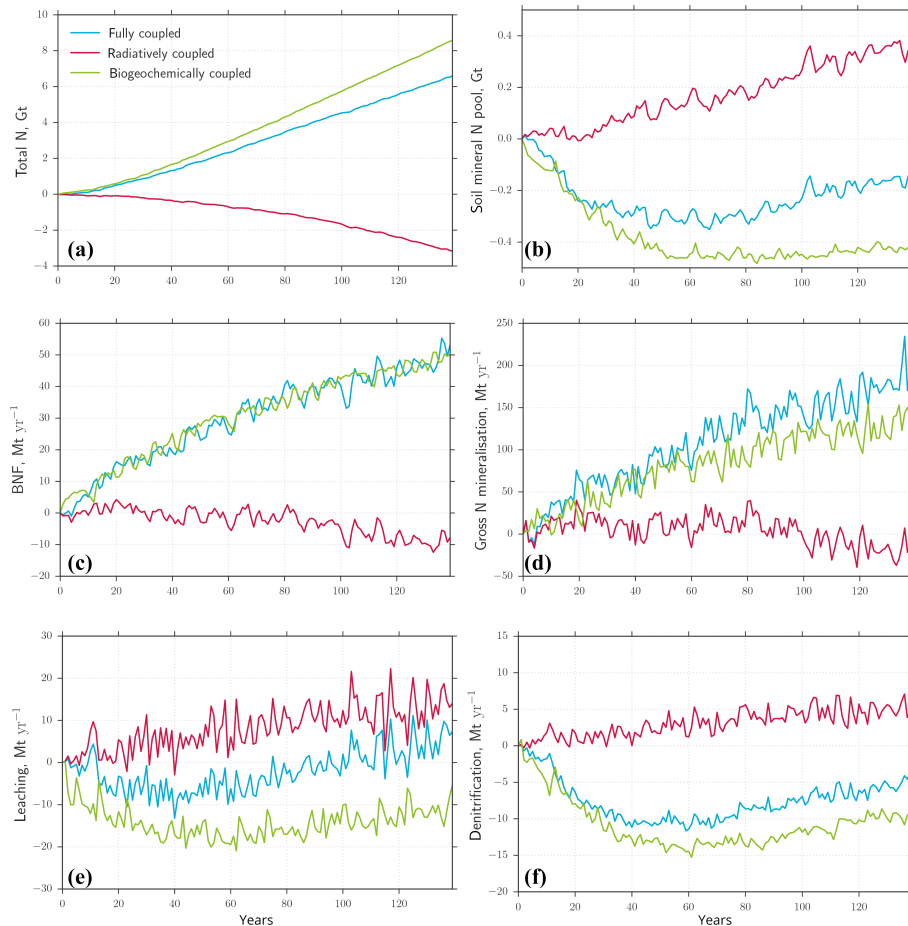
We find that the effect of increasing CO<sub>2</sub> and climate change on the nitrogen balance differ. Elevated CO<sub>2</sub> alone leads to a shift from inorganic nitrogen to organic nitrogen (Fig. 4a, b), whereas climate change is dampening this shift as warming stimulates the decomposition of organic nitrogen (Fig. 4d) and thereby slow down the progressive immobilization of mineral nitrogen into biomass and soil organic matter. Climate change alone leads to a loss of nitrogen from the sys-

tem (Fig. 4a): the enhanced mineralization of organic nitrogen due to warming leads to increased losses of nitrogen via leaching and denitrification. We further found that changes in the water cycle due to climate change are increasing losses by leaching, while denitrification follows primarily the changes in substrate availability despite the influence of soil moisture in Eq. (17) (Fig. 5). Overall, we find that total nitrogen losses are intensified relative to the substrate availability at the end compared to the start of the simulations (Fig. 5).

The simulated increase in tightness of the nitrogen cycle as mineral nitrogen stocks deplete is in line with the substrate-based mechanisms proposed based on recent compilation of ecosystem nitrogen addition experiments (Niu et al., 2016), in which mineral nitrogen exerts a major control on the mineral nitrogen consuming processes. However, the respective observed response patterns of ecosystem nitrogen processes remain to a large degree unknown and are represented in a strongly simplified way in JSBACH. In general, we find that the effect of nitrogen availability on carbon storage is rather moderate in all simulations (Fig. 3) due to the adjustments of the nitrogen balance to changes in the carbon cycle (Fig. 5).

### 3.4 The effect of nitrogen on the carbon feedbacks

We quantify the strengths of the climate–carbon feedback ( $\gamma_L$ ) and the carbon–concentration feedback ( $\beta_L$ ) from the radiatively “coupled” and biogeochemically “coupled” simulations, respectively (Fig. 6a, c). Both land feedbacks, with a global  $\beta_L$  of 0.61 Pg(C) ppm<sup>-1</sup> and a global  $\gamma_L$  of  $-27.5$  Pg(C) °C<sup>-1</sup>, are 34 and 53 % smaller than the multi-model averages of the CMIP5 models, despite that the CMIP5 version of JSBACH simulated global  $\beta_L$  and  $\gamma_L$ , which are 59 and 42 % larger than the average of CMIP5 models (Table 7).



**Figure 4.** Changes in the nitrogen cycling in the set of 1 % CO<sub>2</sub> increase simulations with carbon–nitrogen interactions: (a) total nitrogen, (b) mineral N, (c) biological nitrogen fixation, (d) gross mineralization, (e) leaching and (f) denitrification.

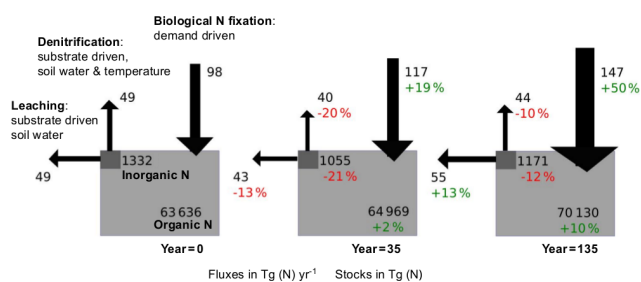
**Table 7.** Carbon cycle feedbacks in simulations with JSBACH compared to results from CMIP5.

	Land carbon–concentration feedback [Pg ppm <sup>-1</sup> ]	Land carbon–climate feedback [Pg °C <sup>-1</sup> ]	reference
CMIP5 MPI-ESM-LR	1.46	−83.2	Arora et al. (2013)
CMIP5 multi-model mean	0.92 ± 0.44	−58.5 ± 28.5	Arora et al. (2013)
JSBACH C	0.74	−26.2	this study
JSBACH CN	0.61	−27.5	this study

In CMIP5 the two ESMs with nitrogen limitation (which shared the same terrestrial biosphere component) had feedback strengths 70–75 % lower than averaged across models (Arora et al., 2013), suggesting a prominent role of nitrogen in dampening both carbon cycle feedbacks. Here, we find that the dampened response is primarily related to the modifications of the soil and litter carbon decomposition module, rather than to the inclusion of the nitrogen cycle. The global  $\beta_L$  in the simulation without nitrogen cycle is only 10 % larger than in the simulation with nitrogen, while there is hardly any difference in global  $\gamma_L$  between simula-

tions, as the small positive and negative differences cancel out (Fig. 6). The contrasting findings regarding the effect of nitrogen on the land carbon feedbacks illustrates the need of a multitude of carbon–nitrogen models to draw general conclusions.

The large difference between the CMIP5 version of JSBACH and the recent version described here can primarily be attributed to the new decomposition model. The drastically reduced  $\gamma_L$  is primarily caused by the smaller initial soil carbon stock, as well as by the long-term acclimation of decomposition to warming due to substrate depletion in



**Figure 5.** The terrestrial nitrogen balance during the fully “coupled” simulation. Shown are the average fluxes and stocks for 10 yr time period for initial conditions (year = 0; 284 ppm), fourth decade (year = 35; 400 ppm) and the last decade (year = 135;  $4 \times 284$  ppm).

YASSO (Goll et al., 2015). The importance of the initial soil carbon stock for the carbon losses due to warming was illustrated by Todd-Brown et al. (2014). The lower  $\beta_L$  can be attributed to a much lower fraction of biomass, which is converted into stable soil organic matter. Therefore, the increasing productivity translates to a much smaller increase in carbon storage. JSBACH does not account for the stimulation of decomposition of recalcitrant carbon under elevated  $\text{CO}_2$  due to increases in labile organic matter (priming effect) observed in lab incubation experiments (Kuzyakov et al., 2000), which could potentially alter the response of soil carbon to increasing  $\text{CO}_2$ , but for which there is no evidence of its relevance on multi-decadal timescales (Cardinael et al., 2015).

A dampening effect of the nitrogen cycle on the response of the terrestrial carbon cycle to climate change and increasing  $\text{CO}_2$  is in line with the majority of carbon–nitrogen model studies (Ciais et al., 2013; Zaehle, 2013), but not all (Esser et al., 2011; Wårlind et al., 2014). The mechanism by which nitrogen can dampen  $\beta_L$  is via an increasing decoupling of gross primary productivity from biomass accumulation under increasing  $\text{CO}_2$  concentration: the incorporation of nitrogen into biomass reduces the mineral nitrogen availability (Luo et al., 2004; Liang et al., 2016), which negatively affects growth (Norby et al., 2010) and increases root respiration (Vicca et al., 2012; McCormack et al., 2015). The dampening of  $\gamma_L$  is mainly via an enhanced nitrogen mineralization in cold regions due to warming (Zaehle, 2013; Wårlind et al., 2014; Koven et al., 2015), which cannot be fully captured by JSBACH due to the assumption of  $\text{CO}_2$ -induced nutrient limitation, and therefore the model is prone to underestimate the effect of nitrogen on  $\gamma_L$ .

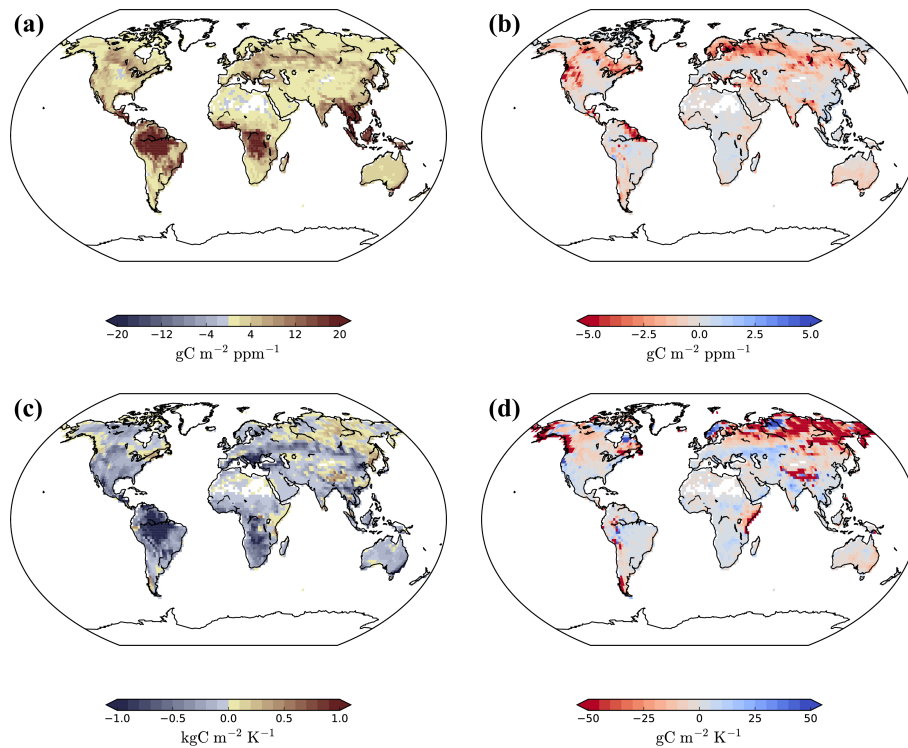
### 3.5 Model limitations and future development directions

The current understanding of processes governing the terrestrial nitrogen balance is still rather limited (Zaehle, 2013), and several processes that might be of importance – in particular stand dynamics (Wårlind et al., 2014), which can potentially alter biomass turnover (Brienen et al., 2015), interactions between plants and microbes, which can stimulate nitrogen scarcity by non-altruistic symbioses (Franklin et al., 2014), plasticity in stoichiometry and leaf nutrient recycling (Zaehle et al., 2014a; Meyerholt and Zaehle, 2015) – and the availability of other nutrients (Goll et al., 2012) are not represented in JSBACH. In addition, the loss of organic matter in general due to erosion, although potentially of importance (Lal, 2002), is not yet represented in global land surface models, but developments are underway (Naipal et al., 2015, 2016).

Due to the concept of  $\text{CO}_2$ -induced nutrient limitation in JSBACH, the nitrogen cycle serves primarily as an additional constraint on the carbon uptake. The advantage of the approach is its low complexity and avoidance of assumptions about the initial state of nutrient limitation thereby taking into account (1) the lack of data regarding the nitrogen cycle (Zaehle, 2013) as well as (2) the large uncertainty about the nutrient constraint on plant productivity (Letters et al., 2007; Zaehle, 2013). The shortcomings of this approach are that it limits the applicability of the model to carbon cycle projections for scenarios of increasing atmospheric  $\text{CO}_2$  and that it cannot capture any stimulation of the plant productivity due to changes in nitrogen availability itself; in addition to direct increase in nitrogen availability by nitrogen deposition and fertilization, a stimulation of plant productivity can occur due to reduced losses of nitrogen by pathways that are not under control of biota, such as fire, leaching, or erosion (Thomas et al., 2015). As a result, the model might underestimate the importance of nitrogen cycling for carbon uptake under elevated  $\text{CO}_2$ .

Regarding the processes resolved in JSBACH, the extent of BNF increase has to be regarded as highly uncertain, despite its agreement with short-term experiments (Liang et al., 2016): the formulation of BNF used here is based on an empirical correlation between evapotranspiration and BNF and therefore the rate at which BNF rates increase strictly follows the increase in productivity, whereas in reality the different processes leading to changes in BNF on ecosystem scales operate on differing timescales; the control of plants on their symbiotic partners via glucose export, and in case of nodules via oxygen regulation, result in changes in BNF from hours to months. On longer timescales, the composition of the ecosystem, namely the fraction of BNF associated species, affects nitrogen inputs to the system. While for tropical ecosystems there is evidence that any governing mechanism(s) ought to operate at a synoptic scale (Hedin et al., 2009), a higher-latitude system might experience longer lag





**Figure 6.** Spatial map of the carbon-concentration feedback  $\beta_L$  (a) and the carbon climate feedback  $\gamma_L$  (b) (of the simulations with carbon–nitrogen interactions) as well as the effect of the nitrogen cycling on the respective feedbacks (c, d).

times. Additionally, other nutrients, such as phosphorus or molybdenum, might slow down or reduce the potential of BNF to increase (Vitousek et al., 2013). BNF models, which better resolve the governing mechanisms, for example, Gerber et al. (2010) and Fisher et al. (2012), should be incorporated into ESMs to increase the reliability of the simulated pace of changes in BNF (Meyerholt et al., 2016).

Models that simulate simultaneous competition for soil nitrogen substrates by multiple processes match the observed patterns of nitrogen losses better than models such as JSBACH, which are based on sequential competition (Niu et al., 2016). Here we find that despite the sequential competition, the simulated behavior is in general agreement with the dynamics of substrate-based mechanisms derived from manipulation experiments (Niu et al., 2016) and the spatial variability in the respective loss pathways is to a large degree in line with  $\delta^{15}\text{N}$ -derived patterns, despite the low performance of another sequential competition model (Houlton et al., 2015; Zhu and Riley, 2015)

The high-latitude permafrost processes are not represented here but were shown to be of importance for the effect on warming on carbon and nitrogen losses. Permafrost regions store about 1000 GtC within the upper few meters of soil (Hugelius et al., 2014). The thawing of permafrost and deepening of the active layer in response to global warming can potentially lead to a much stronger climate carbon feedback (Schneider Von Deimling et al., 2012; Schuur et al., 2015).

The recent study of Koven et al. (2015) with the CLM model showed these carbon losses in high latitudes can be partly offset by increased nitrogen mineralization, and in turn productivity and input to the soils.

Finally, as advocated by, for example, Prentice et al. (2015) and Medlyn et al. (2015), the stringent use of observational data sets to evaluate the present-day state of ecosystems as well as their response to manipulations must drive and guide new model developments whenever possible. With respect to JSBACH and other land surface models, the use of observation-derived climatology instead of the ESM climate as well as the use of site-specific simulations to allow for a straightforward comparison to manipulation experiments is a research priority to increase the model reliability (Luo et al., 2012). In this study, the use of the ESM climatology is justified by a focus on the feedback analysis in the framework of idealized simulations as suggested in the climate–carbon cycle model intercomparison project C4MIP (Anav et al., 2013; Jones et al., 2016). For further evaluation of the nitrogen limitation, however, the preferable setup includes site-level simulations driven by observation-derived climatology (Zaehle et al., 2014b).

#### 4 Conclusions

The simulated response of primary productivity to increasing CO<sub>2</sub>, simulated litter stoichiometries, as well as the simulated spatial variability in nitrogen-loss pathways are in good agreement with observation-based estimates. Here we show that a simple representation of mineral nitrogen dynamics can achieve a high agreement with observation in respect to nitrogen-loss pathways. Further refinements of denitrification should address the relationship between denitrification and low soil moisture availability and as well as introduce a temperature scaling function.

The effect of nitrogen cycling on the land carbon uptake in idealized simulations with JSBACH is globally minor, but not negligible. In particular, the carbon-concentration feedback is affected by mineral nitrogen availability, but the extent is moderate compared to earlier studies (Arora et al., 2013; Zaehle, 2013). During the first decades of the simulations, nitrogen limitation is circumvented by a strong initial decline in loss terms in combination with increases in biological nitrogen fixation. Afterwards progressive increases in biological nitrogen fixation drive the accumulation of nitrogen in ecosystems. In addition, warming enhances mineralization and counteracts the immobilization of nitrogen in biomass. Our study is in line with the majority of carbon dioxide enrichment studies (Liang et al., 2016), showing that progressive nitrogen limitation under elevated carbon dioxide concentrations is less likely to occur than originally suggested (Luo et al., 2004).

The timescale and the extent to which the nitrogen cycle adjusts to increasing carbon dioxide and changing climate depend on the response of the input and loss processes of nitrogen as well as turnover of organic nitrogen. Here, we illustrate that the processes counteracting nitrogen scarcity operate on different timescales and have different trajectories due to differences in the respective environmental drivers, which indicates a picture more complicated than drawn from environmental response functions (Niu et al., 2016; Liang et al., 2016). It is difficult to assess to what extent the timescales in our experiments are realistic, as timescale on which these processes operate is well beyond the typical duration of manipulation experiments.

Our results suggest that nitrogen limitation of land carbon uptake of natural ecosystems could be temporally restricted, being the result of the inertia of the balancing processes (Altabet et al., 1995; Hedin et al., 2009). Ultimately, other nutrients like phosphorus, whose sources are depleted over time, are likely to dominate the long-term capacity of carbon storage.

*Code availability.* The JSBACH model version 3.10 used here includes the soil module YASSO and nitrogen components. The model version corresponds to the revision 8691 from the 19 July 2016 in the Apache version control system (SVN) of the Max Planck Institute for Meteorology (<https://svn.zmaw.de/svn/cosmos/branches/mpiesm-landveg>). This version will be used in the CMIP6 simulations, where other components (land use, dynamic vegetation, fire) will be included as well. The source code of the CMIP6 version of JSBACH as a part of MPI-ESM will be available in 2017 under the MPI-M Software License Agreement obtained at <http://www.mpimet.mpg.de/en/science/models/license/>. In meantime, please contact Thomas Raddatz ([thomas.raddatz@mpimet.mpg.de](mailto:thomas.raddatz@mpimet.mpg.de)) for the code of the JSBACH if you plan an application of the model and envisage longer-term scientific collaboration.

*Data availability.* Primary data and scripts used in the analysis and other supplementary information that may be useful in reproducing the author's work are archived by the Max Planck Institute for Meteorology and can be obtained by contacting [publications@mpimet.mpg.de](mailto:publications@mpimet.mpg.de).

## Appendix A: The nitrogen limitation factor

The nitrogen limitation factor,  $f_{\text{limit}}^{\text{N}}$ , is calculated based on a supply and demand approach (Parida, 2011; Goll et al., 2012). In a first step, potential carbon fluxes are computed from which the gross mineralization, immobilization ( $D_{\text{micr}}$ ) and plant uptake of mineral nitrogen ( $D_{\text{veg}}$ ) are diagnosed. In a second step, all fluxes consuming nitrogen (donor compartment has a higher C:N ratio than the receiving pool as well as plant uptake) are downregulated in case nitrogen demand cannot be met by the nitrogen supply. Hereby, a common scalar ( $f_{\text{limit}}^{\text{N}}$ ) is used, and thereby no assumption about the relative competitive strengths of microbial and plant consumption has to be made.

$$f_{\text{limit}}^{\text{N}} = \begin{cases} \frac{[\frac{dN_{\text{smin}}}{dt}]^{\text{max}}}{D_{\text{micr}} + D_{\text{veg}}} & \text{for } (D_{\text{micr}} + D_{\text{veg}}) > [\frac{dN_{\text{smin}}}{dt}]^{\text{max}} \\ 1 & \text{otherwise} \end{cases}, \quad (\text{A1})$$

where the term in square bracket is the maximum rate at which the soil mineral nitrogen pool can supply nitrogen. Note that in the discretized formulation the mineral nitrogen pool can at most be depleted during a single model time step ( $\Delta t$ ). We thus set this maximum rate to  $\frac{dN_{\text{smin}}}{\Delta t}$ .

## Appendix B: Evaluation of dynamically computed C:N ratios

The only ecosystem compartment in JSBACH that has a flexible stoichiometry is non-lignified litter and fast-decomposing organic matter. The simulated carbon to nitrogen ratios of this compartment for the six plant functional types in JSBACH are in rather good agreement with observations of foliage litter from the ART-DECO database (Table B1), except for tropical broadleaved deciduous trees and extra-tropical evergreen trees. The reason for the overestimation of nitrogen content in litter from extratropical evergreen trees is the global parametrization of leaf stoichiometry applied in JSBACH, which does not capture the lower leaf nitrogen concentration in needle-leaved trees compared to broadleaved trees (Kattge et al., 2011). The data for tropical species are very scarce and the variability among species is large, which hamper the interpretation of the mismatch between model and observation for the tropical broadleaved deciduous trees.

## Appendix C: Consistency of nitrogen-loss pathways with earlier estimates

The reconstructed  $f_{\text{denit}}$  map from observed climatology (Fig. C1) is generally similar to one presented by Houlton et al. (2015), with high fractions (ca. 80 %) in the tropics and mid-latitude deserts, a strong gradient of decreasing fractions with decreasing temperature towards high altitudes and latitudes, and values in the range 0–20 % reached in cold, wet

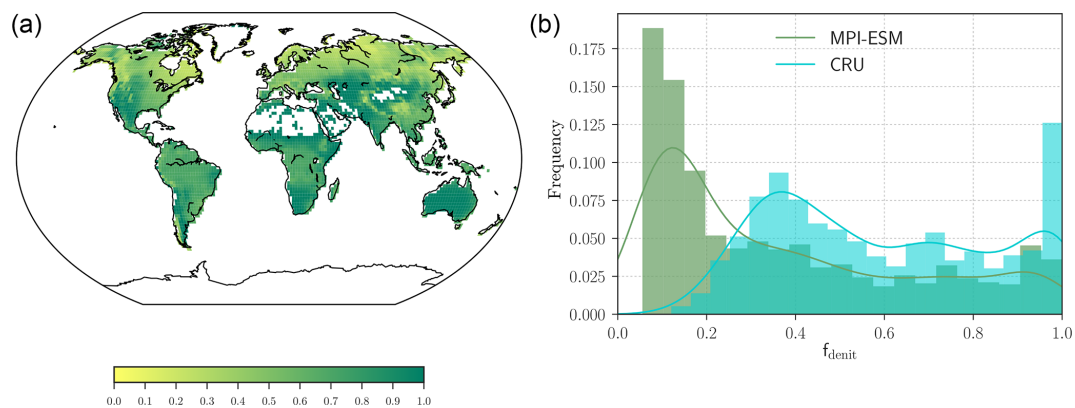
**Table B1.** Carbon to nitrogen mass ratio [ $\text{g(C)}\text{g}^{-1}(\text{N})$ ] of non-lignified litter compared to observations of foliage litter from Cornwell et al. (2008); Brovkin et al. (2012).

PFT	Simulated	Observed
Tropical broadleaved evergreen trees	53.5	55.9
Tropical broadleaved deciduous trees	55.1	29.4
Extra-tropical evergreen trees	50.4	68.3
Extra-tropical deciduous trees	54.4	55.9
C3 perennial grass	54.5	47.6
C4 perennial grass	53.4	54.1

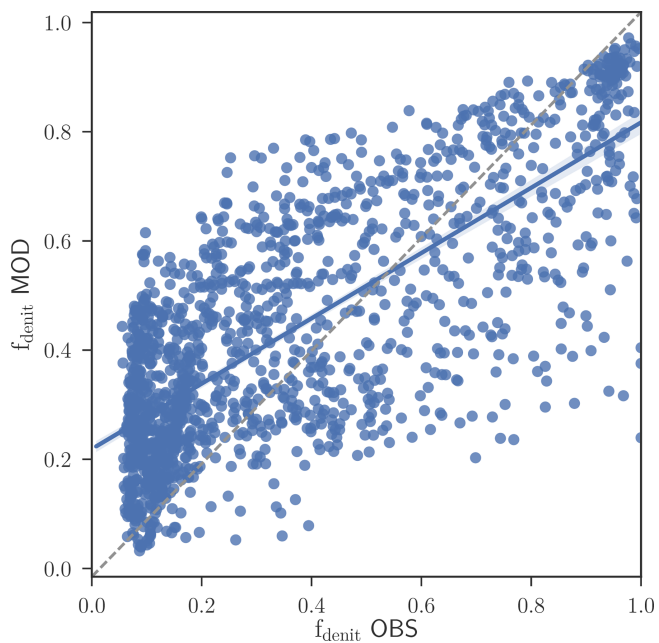
climates in the north. However, some differences are apparent, most obviously connected with the use of mean annual temperature (MAT) by Houlton et al. (2015) to index microbial activity. MAT becomes extremely low in Eurasia towards the northeast, for example, and accordingly, Houlton et al. (2015) estimates of the denitrification fraction become very low there. Craine et al. (2015) noted that climates with very low MAT (including sites in NE Siberia) showed anomalous values of soil  $\delta^{15}\text{N}$ , more similar to those of warmer climates. Our approach takes account of this by the use of an index that is much more responsive to the warm summers than to the extreme cold winters found in hypercontinental climates.

When simulated climatology is used to upscale the empirical relationship between temperature, runoff and soil  $\delta^{15}\text{N}$ , the influence of biases in simulated climatology on  $f_{\text{denit}}$  become apparent. The overestimation of precipitation and subsequently runoff of about 20 % in MPI-ESM (Weedon et al., 2011; Hagemann et al., 2013) leads to a pronounced peak in the histogram of  $f_{\text{denit}}$  at about 0.1–0.2 (Fig. C1), which is mostly in the mid- and high-latitude regions in northern hemisphere.





**Figure C1.** Reconstructed fractions of nitrogen lost by denitrification relative to total losses ( $f_{\text{denit}}$ ). Shown are loss fractions reconstructed from observational data on  $\delta^{15}\text{N}$  and observed climatology (a) and the frequency distribution of reconstructed  $f_{\text{denit}}$  from observed (turquoise) and simulated (green) climatology, respectively (b).



**Figure C2.** Scatter plot of simulated and reconstructed denitrification fractions ( $f_{\text{denit}}$ ) derived from simulated climatology.

*Author contributions.* The study was led by Daniel S. Goll, who developed the model concept and implemented it into JSBACH. Victor Brovkin, Alexander J. Winkler and Thomas Raddatz designed and performed the model experiment. Alexander J. Winkler analyzed and visualized the data. Ning Dong and Colin Prentice performed the estimation of the nitrogen-loss pathways. Philippe Ciais contributed to the analysis and evaluation of the model. The draft of the manuscript was written by Daniel S. Goll with all authors contributing to its final form.

*Competing interests.* The authors declare that they have no conflict of interest.

*Acknowledgements.* The authors sincerely thank the editor Dr. Sato and the two anonymous referees for their comments which substantially improved the quality of this work. This work was initiated when DSG was funded through the DFG Cluster of Excellence CLiSAP (EXC 177/2), now he is funded by the “IMBALANCE-P” project of the European Research Council (ERC-2013-SyG-610028). This work contributes to the H2020 project CRESCENDO, which receives funding from the European Union’s Horizon 2020 research and innovation program under grant agreement no. 641816. DN was supported by an international Macquarie University Research Scholarship and by the Ecosystem Modeling and Scaling Infrastructure (eMAST, <http://www.emast.org.au>) facility of the Terrestrial Ecosystem Research Network. This work is a contribution to the AXA Chair Programme in Biosphere and Climate Impacts and the Imperial College initiative on Grand Challenges in Ecosystems and the Environment (ICP). We thank Christian Reick and Daniela Kracher for discussing the nitrogen model implementation, and Christian Wirth and Hans Cornelissen for discussions of woody litter decomposition. We thank Thomas Kleinen for reviewing the manuscript prior submission. We acknowledge the World Climate Research Programme’s Working Group on Coupled Modeling, which is responsible for CMIP, and we thank the climate modeling group at the Max Planck Institute for Meteorology producing and making available their model output. For CMIP the U.S. Department of Energy’s Program for Climate Model Diagnosis and Intercomparison provides coordinating support and led development of software infrastructure in partnership with the Global Organization for Earth System Science Portals.

The article processing charges for this open-access publication were covered by the Max Planck Society.

Edited by: H. Sato

Reviewed by: two anonymous referees

## References

- Altabet, M. A., Francois, R., Murray, D. W., and Prell, W. L.: Climate-related variations in denitrification in the Arabian Sea from sediment 15N/14N ratios, *Nature*, 373, 506–509, doi:10.1038/373506a0, 1995.
- Amundson, R., Austin, A., Schuur, E., Yoo, K., Matzek, V., Kendall, C., Uebersax, A., Brenner, D., and Baisden, W. T.: Global patterns of the isotopic composition of soil and plant nitrogen, *Global Biogeochem. Cy.*, 17, 31/1–31/10, doi:10.1029/2002GB001903, 2003.
- Anav, A., Friedlingstein, P., Kidston, M., Bopp, L., Ciais, P., Cox, P., Jones, C., Jung, M., Myneni, R., and Zhu, Z.: Evaluating the Land and Ocean Components of the Global Carbon Cycle in the Cmp5 Earth System Models, *J. Climate*, 26, 6801–6843, doi:10.1175/JCLI-D-12-00417.1, 2013.
- Arora, V. K., Boer, G. J., Friedlingstein, P., Eby, M., Jones, C. D., Christian, J. R., Bonan, G., Bopp, L., Brovkin, V., Cadule, P., Hajima, T., Ilyina, T., Lindsay, K., Tjiputra, J. F., and Wu, T.: Carbon-concentration and carbon-climate feedbacks in CMIP5 Earth system models, *J. Climate*, 26, 5289–5314, doi:10.1175/JCLI-D-12-00494.1, 2013.
- Bai, E., Houlton, B. Z., and Wang, Y. P.: Isotopic identification of nitrogen hotspots across natural terrestrial ecosystems, *Biogeosciences*, 9, 3287–3304, doi:10.5194/bg-9-3287-2012, 2012.
- Brienen, R. J. W., Phillips, O. L., Feldpausch, T. R., et al.: Long-term decline of the Amazon carbon sink, *Nature*, 519, 344–348, doi:10.1038/nature14283, 2015.
- Brovkin, V., van Bodegom, P. M., Kleinen, T., Wirth, C., Cornwell, W. K., Cornelissen, J. H. C., and Kattge, J.: Plant-driven variation in decomposition rates improves projections of global litter stock distribution, *Biogeosciences*, 9, 565–576, doi:10.5194/bg-9-565-2012, 2012.
- Butterbach-Bahl, K., Baggs, E. M., Dannenmann, M., Kiese, R., and Zechmeister-Boltenstern, S.: Nitrous oxide emissions from soils: how well do we understand the processes and their controls?, *Philos. T. R. Soc. Lond. B.*, 368, 20130122, doi:10.1098/rstb.2013.0122, 2013.
- Campbell, G. S. and Norman, J. M.: *An Introduction to Environmental Biophysics*, Springer-Verlag New York, 2nd Edn., doi:10.1007/978-1-4612-1626-1, 1998.
- Canion, A., Kostka, J. E., Gihring, T. M., Huettel, M., van Beusekom, J. E. E., Gao, H., Lavik, G., and Kuypers, M. M. M.: Temperature response of denitrification and anammox reveals the adaptation of microbial communities to in situ temperatures in permeable marine sediments that span 50° in latitude, *Biogeosciences*, 11, 309–320, doi:10.5194/bg-11-309-2014, 2014.
- Cardinael, R., Eglin, T., Guenet, B., Neill, C., Houot, S., and Chenu, C.: Is priming effect a significant process for long-term SOC dynamics? Analysis of a 52-years old experiment, *Biogeochemistry*, 123, 203–219, doi:10.1007/s10533-014-0063-2, 2015.
- Cheng, W., Chen, Q., Xu, Y., Han, X., and Li, L.: Climate and ecosystem 15N natural abundance along a transect of Inner Mongolian grasslands: Contrasting regional patterns and global patterns, *Global Biogeochem. Cy.*, 23, 1–11, doi:10.1029/2008GB003315, 2009.
- Ciais, P., Sabine, C., Bala, G., Bopp, L., Brovkin, V., Canadell, J., Chhabra, a., DeFries, R., Galloway, J., Heimann, M., Jones, C., Quéré, C. L., Myneni, R., Piao, S., Thornton, P., France, P. C., Willem, J., Friedlingstein, P., and Munhoven, G.: 2013: Carbon

- and Other Biogeochemical Cycles, in: *Climate Change 2013: The Physical Science Basis. Contribution of Working Group I to the Fifth Assessment Report of the Intergovernmental Panel on Climate Change*, edited by: Stocker, T., Qin, D., Plattner, G.-K., Tignor, M., Allen, S. K., Boschung, J., Nauels, A., Y., X., Bex, V., and Midgley, P. M., Cambridge University Press, Cambridge, United Kingdom and New York, NY, USA, 465–570, doi:10.1017/CBO9781107415324.015, 2013.
- Cleveland, C. C., Townsend, A. R., Schimel, D. S., Fisher, H., Hedin, L. O., Perakis, S., Latty, E. F., Fischer, C. V., Elseroad, A., and Wasson, M. F.: Global patterns of terrestrial biological nitrogen ( $N_2$ ) fixation in natural ecosystems, *Global Biochem. Cy.*, 13, 623–645, doi:10.1029/1999GB900014, 1999.
- Cornwell, W. K., Cornelissen, J. H. C., Amatangelo, K., Dorrepaal, E., Eviner, V. T., Godoy, O., Hobbie, S. E., Hoorens, B., Kurokawa, H., Pérez-Harguindeguy, N., Quested, H. M., Santiago, L. S., Wardle, D. A., Wright, I. J., Aerts, R., Allison, S. D., Van Bodegom, P., Brovkin, V., Chatain, A., Callaghan, T. V., Díaz, S., Garnier, E., Gurvich, D. E., Kazakou, E., Klein, J. A., Read, J., Reich, P. B., Soudzilovskaia, N. A., Vaieretti, M. V., and Westoby, M.: Plant species traits are the predominant control on litter decomposition rates within biomes worldwide, *Ecol. Lett.*, 11, 1065–1071, doi:10.1111/j.1461-0248.2008.01219.x, 2008.
- Craine, J. M., Elmore, A. J., Wang, L., Augusto, L., Baisden, W. T., Brookshire, E. N. J., Cramer, M. D., Hasselquist, N. J., Hobbie, E. A., Kahmen, A., Koba, K., Kranabetter, J. M., Mack, M. C., Marin-Spiotta, E., Mayor, J. R., McLauchlan, K. K., Michelsen, A., Nardoto, G. B., Oliveira, R. S., Perakis, S. S., Peri, P. L., Quesada, C. A., Richter, A., Schipper, L. A., Stevenson, B. A., Turner, B. L., Viani, R. A. G., Wanek, W., and Zeller, B.: Convergence of soil nitrogen isotopes across global climate gradients., *Sci. Rep.*, 5, 8280, doi:10.1038/srep08280, 2015.
- Ehlers, I., Augusti, A., Betson, T. R., Nilsson, M. B., Marshall, J. D., and Schleucher, J.: Detecting long-term metabolic shifts using isotopomers: CO<sub>2</sub>-driven suppression of photorespiration in C<sub>3</sub> plants over the 20th century, *P. Natl. Acad. Sci.*, 12.5, 15585–15590, doi:10.1073/pnas.1504493112, 2015.
- Esser, G., Kattge, J., Sakalli, A., and Use, L.: Feedback of carbon and nitrogen cycles enhances carbon sequestration in the terrestrial biosphere, *Glob. Change Biol.*, 17, 819–842, doi:10.1111/j.1365-2486.2010.02261.x, 2011.
- Eyring, V., Bony, S., Meehl, G. A., Senior, C. A., Stevens, B., Stouffer, R. J., and Taylor, K. E.: Overview of the Coupled Model Intercomparison Project Phase 6 (CMIP6) experimental design and organization, *Geosci. Model Dev.*, 9, 1937–1958, doi:10.5194/gmd-9-1937-2016, 2016.
- Fang, Y., Yoh, M., Koba, K., Zhu, W., Takebayashi, Y., Xiao, Y., Lei, C., Mo, J., Zhang, W., and Lu, X.: Nitrogen deposition and forest nitrogen cycling along an urban-rural transect in southern China, *Glob. Change Biol.*, 17, 872–885, doi:10.1111/j.1365-2486.2010.02283.x, 2011.
- Fang, Y., Koba, K., Yoh, M., Makabe, A., and Liu, X.: Patterns of foliar  $^{15}N$  and their control in Eastern Asian forests, *Ecol. Res.*, 28, 735–748, doi:10.1007/s11284-012-0934-8, 2013.
- Fisher, J. B., Badgley, G., and Blyth, E.: Global nutrient limitation in terrestrial vegetation, *Global Biogeochem. Cy.*, 26, GB3007, doi:10.1029/2011GB004252, 2012.
- Franklin, O., Näsholm, T., Högberg, P., and Högberg, M. N.: Forests trapped in nitrogen limitation – an ecological market perspective on ectomycorrhizal symbiosis, *New Phytol.*, 203, 657–666, doi:10.1111/nph.12840, 2014.
- Friedlingstein, P., Cox, P., Betts, R., Bopp, L., Von Bloh, W., Brovkin, V., Cadule, P., Doney, S., Eby, M., Fung, I., Bala, G., John, J., Jones, C., Joos, F., Kato, T., Kawamiya, M., Knorr, W., Lindsay, K., Matthews, H. D., Raddatz, T., Rayner, P., Reick, C., Roeckner, E., Schnitzler, K. G., Schnur, R., Strassmann, K., Weaver, A. J., Yoshikawa, C., and Zeng, N.: Climate-carbon cycle feedback analysis: Results from the (CMIP)-M-4 model intercomparison, *J. Climate*, 19, 3337–3353, 2006.
- Galloway, J. N., Dentener, F. J., Capone, D. G., Boyer, E. W., Howarth, R. W., Seitzinger, S. P., Asner, G. P., Cleveland, C. C., Green, P. A., Holland, E. A., Karl, D. M., Michaels, A. F., Porter, J. H., Townsend, A. R., and Vo, C. J.: Nitrogen cycles : past, present, and future, *Biogeochemistry*, 70, 153–226, 2004.
- Galloway, J. N., Leach, A. M., Bleeker, A., and Erisman, J. W.: A chronology of human understanding of the nitrogen cycle, *Philos. T. R. Soc. Lond. Ser. B*, 368, 20130120, doi:10.1098/rstb.2013.0120, 2013.
- Gerber, S., Hedin, L. O., Oppenheimer, M., Pacala, S. W., and Shevliakova, E.: Nitrogen cycling and feedbacks in a global dynamic land model, *Global Biogeochem. Cy.*, 24, 1–15, doi:10.1029/2008GB003336, 2010.
- Goll, D. S., Brovkin, V., Parida, B. R., Reick, C. H., Kattge, J., Reich, P. B., van Bodegom, P. M., and Niinemets, Ü.: Nutrient limitation reduces land carbon uptake in simulations with a model of combined carbon, nitrogen and phosphorus cycling, *Biogeosciences*, 9, 3547–3569, doi:10.5194/bg-9-3547-2012, 2012.
- Goll, D. S., Brovkin, V., Liski, J., Raddatz, T., Thum, T., and Todd-Brown, K. E. O.: Strong dependence of CO<sub>2</sub> emissions from anthropogenic land cover change on soil carbon parametrization and initial land cover, *Global Biogeochem. Cy.*, 29, 1–58, doi:10.1002/2014GB004988, 2015.
- Hagemann, S. and Stacke, T.: Impact of the soil hydrology scheme on simulated soil moisture memory, *Clim. Dynam.*, 44, 1731–1750, doi:10.1007/s00382-014-2221-6, 2014.
- Hagemann, S., Loew, A., and Andersson, A.: Combined evaluation of MPI-ESM land surface water and energy fluxes, *J. Adv. Model. Earth Syst.*, 5, 259–528, doi:10.1029/2012MS000173, 2013.
- Hedin, L. O., Armesto, J. J., and Johnson, R. A. H.: Patterns of Nutrient Loss from Unpolluted, Old-Growth Temperate Forests: Evaluation of Biogeochemical Theory, *Ecology*, 76, 493–509, doi:10.2307/1941208, 1995.
- Hedin, L. O., Brookshire, E. J., Menge, D. N., and Barron, A. R.: The Nitrogen Paradox in Tropical Forest Ecosystems, *Annual Review of Ecology, Evolution, and Systematics*, 40, 613–635, doi:10.1146/annurev.ecolsys.37.091305.110246, 2009.
- Hilton, R. G., Galy, A., West, A. J., Hovius, N., and Roberts, G. G.: Geomorphic control on the  $\delta^{15}N$  of mountain forests, *Biogeosciences*, 10, 1693–1705, doi:10.5194/bg-10-1693-2013, 2013.
- Houlton, B. Z. and Bai, E.: Imprint of denitrifying bacteria on the global terrestrial biosphere, *P. Natl. Acad. Sci. USA*, 106, 21713–21716, doi:10.1073/pnas.0912111106, 2009.
- Houlton, B. Z., Marklein, A. R., and Bai, E.: Representation of nitrogen in climate change forecasts, *Nature Climate Change*, 5, 398–401, doi:10.1038/nclimate2538, 2015.
- Hugelius, G., Strauss, J., Zubrzycki, S., Harden, J. W., Schuur, E. A. G., Ping, C.-L., Schirmer, L., Grosse, G., Michaelson, G.

- J., Koven, C. D., O'Donnell, J. A., Elberling, B., Mishra, U., Camill, P., Yu, Z., Palmtag, J., and Kuhry, P.: Estimated stocks of circumpolar permafrost carbon with quantified uncertainty ranges and identified data gaps, *Biogeosciences*, 11, 6573–6593, doi:10.5194/bg-11-6573-2014, 2014.
- Hungate, B. A., Dukes, J. S., Shaw, M. R., Luo, Y., and Field, C. B.: Nitrogen and Climate Change, *Science*, 302, 1512–1513, doi:10.1126/science.1091390, 2003.
- Hurttt, G. C., Chini, L. P., Frohling, S., Betts, R. A., Feddema, J., Fischer, G., Fisk, J. P., Hibbard, K., Houghton, R. A., Janetos, A., Jones, C. D., Kindermann, G., Kinoshita, T., Klein Goldewijk, K., Riahi, K., Shevliakova, E., Smith, S., Stehfest, E., Thomson, A., Thornton, P., Vuuren, D. P., and Wang, Y. P.: Harmonization of land-use scenarios for the period 1500–2100: 600 years of global gridded annual land-use transitions, wood harvest, and resulting secondary lands, *Climatic Change*, 109, 117–161, doi:10.1007/s10584-011-0153-2, 2011.
- Ito, A.: A historical meta-analysis of global terrestrial net primary productivity: are estimates converging?, *Glob. Change Biol.*, 17, 3161–3175, doi:10.1111/j.1365-2486.2011.02450.x, 2011.
- Jones, C. D., Arora, V., Friedlingstein, P., Bopp, L., Brovkin, V., Dunne, J., Graven, H., Hoffman, F., Ilyina, T., John, J. G., Jung, M., Kawamiya, M., Koven, C., Pongratz, J., Raddatz, T., Randerson, J. T., and Zaehle, S.: C4MIP – The Coupled Climate–Carbon Cycle Model Intercomparison Project: experimental protocol for CMIP6, *Geosci. Model Dev.*, 9, 2853–2880, doi:10.5194/gmd-9-2853-2016, 2016.
- Kattge, J., Díaz, S., Lavorel, S., Prentice, I. C., Leadley, P., Bönsch, G., Garnier, E., Westoby, M., Reich, P. B., Wright, I. A. N. J., Cornelissen, J. H. C., Violle, C., Harrison, S. P., van Bodegom, P. M., Reichstein, M., Enquist, B. J., Soudzilovskaia, N. A., Ackerly, D. D., Anand, M., Atkin, O., Bahn, M., Baker, T. R., Baldocchi, D., Bekker, R., Blanco, C. C., Blonder, B., Bond, W. J., Bradstock, R., Bunker, D. E., Casanoves, F., Cavender-Bares, J., Chambers, J. Q., Chapin, F. S., Chave, J., Coomes, D., Cornwell, W. K., Craine, J. M., Dobrin, B. H., Duarte, L., Durka, W., Elser, J., Esser, G., Estiarte, M., Fagan, W. F., Fang, J., Fernández-méndez, F., Fidelis, A., Finegan, B., Flores, O., Ford, H., Frank, D., Freschet, G. T., Fyllas, N. M., Gallagher, R. V., Green, W. A., Gutierrez, A. G., Hickler, T., Higgins, S., Hodgson, J. G., Jalili, A., Jansen, S., Joly, C., Kerkhoff, A. J., Kirkup, D. O. N., Kitajima, K., Kleyer, M., Klotz, S., Knops, J. M. H., Kramer, K., Kühn, I., Kurokawa, H., Laughlin, D., Lee, T. D., Leishman, M., Lens, F., Lenz, T., Lewis, S. L., Lloyd, J. O. N., Llusià, J., Louault, F., Ma, S., Mahecha, M. D., Manning, P., Massad, T., Medlyn, B., Messier, J., Moles, A. T., Müller, S. C., Nadrowski, K., Naeem, S., Niinemets, Ü, L. O., Nöllert, S., Nüske, A., Ogaya, R., Oleksyn, J., Onipchenko, V. G., Onoda, Y., Ordoñez, J., Overbeck, G., Ozinga, W. I. M. A., Patiño, S., Paula, S., Pausas, J. G., Peñuelas, J., Phillips, O. L., Pillar, V., Poorter, H., Poorter, L., Poschod, P., Prinzing, A., Proulx, R., Rammig, A., Reinsch, S., Reu, B., Sack, L., Salgado-negret, B., Sardans, J., Shiodera, S., Shipley, B., Siefert, A., Sosinski, E., Soussana, J.-F., Swaine, E., Swenson, N., Thompson, K. E. N., Thornton, P., Waldram, M., Weiher, E., White, M., White, S., Wright, S. J., Yguel, B., Zaehle, S., Zanne, A. M. Y. E., and Wirth, C.: TRY – a global database of plant traits, *Glob. Change Biol.*, 17, 2905–2935, doi:10.1111/j.1365-2486.2011.02451.x, 2011.
- Koven, C. D., Lawrence, D. M., and Riley, W. J.: Permafrost carbon-climate feedback is sensitive to deep soil carbon decomposability but not deep soil nitrogen dynamics, *P. Natl. Acad. Sci. USA*, 112, 3752–3757, doi:10.1073/pnas.1415123112, 2015.
- Kuzyakov, Y., Friedel, J. K., and Stahr, K.: Review of mechanisms and quantification of priming effects, *Soil Biol. Biochem.*, 32, 1485–1498, doi:10.1016/S0038-0717(00)00084-5, 2000.
- Lal, R.: Soil erosion and the global carbon budget, *Environ. Int.*, 29, 437–450, doi:10.1016/S0160-4120(02)00192-7, 2002.
- Letters, E., Elser, J. J., Bracken, M. E. S., Cleland, E. E., Gruner, D. S., Harpole, W. S., Hillebrand, H., Ngai, J. T., Seabloom, E. W., Shurin, J. B., and Smith, J. E.: Global analysis of nitrogen and phosphorus limitation of primary producers in freshwater, marine and terrestrial ecosystems, *Ecol. Lett.*, 10, 1135–1142, doi:10.1111/j.1461-0248.2007.01113.x, 2007.
- Liang, J., Qi, X., Souza, L., and Luo, Y.: Processes regulating progressive nitrogen limitation under elevated carbon dioxide: a meta-analysis, *Biogeosciences*, 13, 2689–2699, doi:10.5194/bg-13-2689-2016, 2016.
- Luo, Y., Su, B., Currie, W. S., Dukes, J. S., Finzi, A. C., Hartwig, U., Hungate, B., McMurtrie, R. E., Oren, R., Parton, W. J., Pataki, D. E., Shaw, M. R., Zak, D. R., and Field, C. B.: Progressive Nitrogen Limitation of Ecosystem Responses to Rising Atmospheric Carbon Dioxide, *Bioscience*, 54, 731–739, doi:10.1641/0006-3568(2004)054[0731:PNLOER]2.0.CO;2, 2004.
- Luo, Y. Q., Randerson, J. T., Abramowitz, G., Bacour, C., Blyth, E., Carvalhais, N., Ciais, P., Dalmonech, D., Fisher, J. B., Fisher, R., Friedlingstein, P., Hibbard, K., Hoffman, F., Huntzinger, D., Jones, C. D., Koven, C., Lawrence, D., Li, D. J., Mahecha, M., Niu, S. L., Norby, R., Piao, S. L., Qi, X., Peylin, P., Prentice, I. C., Riley, W., Reichstein, M., Schwalm, C., Wang, Y. P., Xia, J. Y., Zaehle, S., and Zhou, X. H.: A framework for benchmarking land models, *Biogeosciences*, 9, 3857–3874, doi:10.5194/bg-9-3857-2012, 2012.
- McCarthy, H. R. and Pataki, D. E.: Drivers of variability in water use of native and non-native urban trees in the greater Los Angeles area, *Urban Ecosyst.*, 13, 393–414, doi:10.1007/s11252-010-0127-6, 2010.
- Mccormack, M. L., Dickie, I. A., Eissenstat, D. M., Fahey, T. J., Fernandez, C. W., Guo, D., Erik, A., Iversen, C. M., Jackson, R. B., Leppalammi-Kujansuu, J., Norby, R. J., Phillips, R. P., Pregitzer, K. S., Pritchard, S., Rewald, B., and Zadworny, M.: Redefining fine roots improves understanding of below-ground contributions to terrestrial biosphere processes, *New Phytol.*, 207, 505–518, doi:10.1111/nph.13363, 2015.
- Medlyn, B. E., Kauwe, M. G. D., Walker, A. P., Dietze, C., Hanson, P., Hickler, T., Jain, A., Luo, Y., Parton, W., Colin, I., Wang, S., Wang, Y.-p., Weng, E., Iversen, C. M., Mccarthy, H., Warren, J., Oren, R., Norby, R., Division, E. S., Ridge, O., Goethe, G., and Collins, F.: Using Ecosystem Experiments to Improve Vegetation Models: Lessons Learnt from the Free-Air CO<sub>2</sub> Enrichment Model-Data Synthesis, *Nature Climate Change*, 5, 528–534, doi:10.1038/nclimate2621, 2015.
- Meixner, T. and Bales, R. C.: Hydrochemical modeling of coupled C and N cycling in high-elevation catchments: importance of snow cover, *Biogeochemistry*, 62, 289–308, doi:10.1023/A:1021118922787, 2002.

- Meyerholt, J. and Zaehle, S.: The role of stoichiometric flexibility in modelling forest ecosystem responses to nitrogen fertilization, *New Phytol.*, 208, 1042–1055, doi:10.1111/nph.13547, 2015.
- Meyerholt, J., Zaehle, S., and Smith, M. J.: Variability of projected terrestrial biosphere responses to elevated levels of atmospheric CO<sub>2</sub> due to uncertainty in biological nitrogen fixation, *Biogeosciences*, 13, 1491–1518, doi:10.5194/bg-13-1491-2016, 2016.
- Naipal, V., Reick, C., Pongratz, J., and Van Oost, K.: Improving the global applicability of the RUSLE model – adjustment of the topographical and rainfall erosivity factors, *Geosci. Model Dev.*, 8, 2893–2913, doi:10.5194/gmd-8-2893-2015, 2015.
- Naipal, V., Reick, C., Van Oost, K., Hoffmann, T., and Pongratz, J.: Modeling long-term, large-scale sediment storage using a simple sediment budget approach, *Earth Surf. Dynam.*, 4, 407–423, doi:10.5194/esurf-4-407-2016, 2016.
- New, M., Lister, D., Hulme, M., and Makin, I.: A high-resolution data set of surface climate over global land areas, *Climate Res.*, 21, 1–25, doi:10.3354/cr021001, 2002.
- Niu, S., Classen, A. T., Dukes, J. S., Kardol, P., Liu, L., Luo, Y., Rustad, L., Sun, J., Tang, J., Templer, P. H., Thomas, R. Q., Tian, D., Vicca, S., Wang, Y. P., Xia, J., and Zaehle, S.: Global patterns and substrate-based mechanisms of the terrestrial nitrogen cycle, *Ecol. Lett.*, 19, 697–709, doi:10.1111/ele.12591, 2016.
- Norby, R. J., DeLucia, E. H., Gielen, B., Calfapietra, C., Giardina, C. P., King, J. S., Ledford, J., McCarthy, H. R., Moore, D. J. P., Ceulemans, R., De Angelis, P., Finzi, A. C., Karnosky, D. F., Kubiske, M. E., Lukac, M., Pregitzer, K. S., Scarascia-Mugnozza, G. E., Schlesinger, W. H., and Oren, R.: Forest response to elevated CO<sub>2</sub> is conserved across a broad range of productivity, *P. Natl. Acad. Sci. USA*, 102, 18052–18056, doi:10.1073/pnas.0509478102, 2005.
- Norby, R. J., Warren, J. M., Iversen, C. M., Medlyn, B. E., and McMurtrie, R. E.: CO<sub>2</sub> enhancement of forest productivity constrained by limited nitrogen availability, *P. Natl. Acad. Sci. USA*, 107, 19368–19373, doi:10.1073/pnas.1006463107, 2010.
- Norby, R. J., De Kauwe, M. G., Domingues, T. F., Duursma, R. A., Ellsworth, D. S., Goll, D. S., Lapola, D. M., Luus, K. A., MacKenzie, A. R., Medlyn, B. E., Pavlick, R., Rammig, A., Smith, B., Thomas, R., Thonicke, K., Walker, A. P., Yang, X., and Zaehle, S.: Model-data synthesis for the next generation of forest free-air CO<sub>2</sub> enrichment (FACE) experiments, *New Phytol.*, 209, 17–28, doi:10.1111/nph.13593, 2015.
- Parida, B. R.: The influence of plant nitrogen availability on the global carbon cycle and N O emissions, in: *Berichte zur Erdsystemforschung*, 2011.
- Parton, W. J., Scurlock, J. M. O., Ojima, D. S., Gilmanov, T. G., Scholes, R. J., Schimel, D. S., Kirchner, T., Menaut, J.-C., Seastedt, T. R., Garcia Moya, E., Kamnalrut, A., and Kinyamario, J. I.: Observations and modeling of biomass and soil organic matter dynamics for the grassland biome worldwide, *Global Biogeochem. Cy.*, 7, 785–809, doi:10.1029/93GB02042, 1993.
- Patiño, S., Lloyd, J., Paiva, R., Baker, T. R., Quesada, C. A., Mercado, L. M., Schmerler, J., Schwarz, M., Santos, A. J. B., Aguilar, A., Czimczik, C. I., Gallo, J., Horna, V., Hoyos, E. J., Jimenez, E. M., Palomino, W., Peacock, J., Peña-Cruz, A., Sarmiento, C., Sota, A., Turriago, J. D., Villanueva, B., Vitzthum, P., Alvarez, E., Arroyo, L., Baraloto, C., Bonal, D., Chave, J., Costa, A. C. L., Herrera, R., Higuchi, N., Killeen, T., Leal, E., Luizão, F., Meir, P., Monteagudo, A., Neil, D., Núñez-Vargas, P., Peñuela, M. C., Pitman, N., Priante Filho, N., Prieto, A., Panfil, S. N., Rudas, A., Salomão, R., Silva, N., Silveira, M., Soares de Almeida, S., Torres-Lezama, A., Vásquez-Martínez, R., Vieira, I., Malhi, Y., and Phillips, O. L.: Branch xylem density variations across the Amazon Basin, *Biogeosciences*, 6, 54500568, doi:10.5194/bg-6-545-2009, 2009.
- Peri, P. L., Ladd, B., Pepper, D. A., Bonser, S. P., Laffan, S. W., and Amelung, W.: Carbon ( $\delta^{13}\text{C}$ ) and nitrogen ( $\delta^{15}\text{N}$ ) stable isotope composition in plant and soil in Southern Patagonia's native forests, *Glob. Change Biol.*, 18, 311–321, doi:10.1111/j.1365-2486.2011.02494.x, 2012.
- Pongratz, J., Reick, C., Raddatz, T., and Claussen, M.: A reconstruction of global agricultural areas and land cover for the last millennium, *Global Biogeochem. Cy.*, 22, doi:10.1029/2007GB003153, 2008.
- Prentice, I. C., Liang, X., Medlyn, B. E., and Wang, Y.-P.: Reliable, robust and realistic: the three R's of next-generation land-surface modelling, *Atmos. Chem. Phys.*, 15, 5987–6005, doi:10.5194/acp-15-5987-2015, 2015.
- Raddatz, T. J., Reick, C. H., Knorr, W., Kattge, J., Roeckner, E., Schnur, R., Schnitzler, K.-G. G., Wetzzel, P., and Jungclaus, J.: Will the tropical land biosphere dominate the climate-carbon cycle feedback during the twenty-first century?, *Clim. Dynam.*, 29, 565–574, doi:10.1007/s00382-007-0247-8, 2007.
- Rütting, T.: Nitrogen mineralization, not N<sub>2</sub> fixation, alleviates progressive nitrogen limitation – Comment on “Processes regulating progressive nitrogen limitation under elevated carbon dioxide: a meta-analysis” by Liang et al. (2016), *Biogeosciences*, 14, 751–754, doi:10.5194/bg-14-751-2017, 2017.
- Saugier, B. and Roy, J.: Estimations of global terrestrial productivity: Converging towards a single number?, *Global Terrestrial Productivity: Past, Present and Future*, 573 pp., Academic, San Diego, 2001.
- Schlesinger, W. H.: *Biogeochemistry: An Analysis of Global Change*, Academic Press, San Diego, 2nd Edn., 1997.
- Schneider von Deimling, T., Meinshausen, M., Levermann, A., Huber, V., Frieler, K., Lawrence, D. M., and Brovkin, V.: Estimating the near-surface permafrost-carbon feedback on global warming, *Biogeosciences*, 9, 649–665, doi:10.5194/bg-9-649-2012, 2012.
- Schuur, E. A. G., McGuire, A. D., Schädel, C., Grosse, G., Harden, J. W., Hayes, D. J., Hugelius, G., Koven, C. D., Kuhry, P., Lawrence, D. M., Natali, S. M., Olefeldt, D., Romanovsky, V. E., Schaefer, K., Turetsky, M. R., Treat, C. C., and Vonk, J. E.: Climate change and the permafrost carbon feedback, *Nature*, 520, 171–179, doi:10.1038/nature14338, 2015.
- Shi, Z., Yang, Y., Zhou, X., Weng, E., Finzi, A. C., and Luo, Y.: Inverse analysis of coupled carbon-nitrogen cycles against multiple datasets at ambient and elevated CO<sub>2</sub>, *J. Plant Ecol.*, 9, 285–295, doi:10.1093/jpe/rtv059, 2016.
- Smith, B., Wårlind, D., Arneth, A., Hickler, T., Leadley, P., Siltberg, J., and Zaehle, S.: Implications of incorporating N cycling and N limitations on primary production in an individual-based dynamic vegetation model, *Biogeosciences*, 11, 2027–2054, doi:10.5194/bg-11-2027-2014, 2014.
- Sommer, J., Pausch, J., Brundrett, M. C., Dixon, K. W., Bidartondo, M. I., and Gebauer, G.: Limited carbon and mineral nutrient gain from mycorrhizal fungi by adult Australian Orchids, *Am. J. Bot.*, 99, 1133–1145, doi:10.3732/ajb.1100575, 2012.

- Sullivan, B. W., Smith, W. K., Townsend, A. R., Nasto, M. K., Reed, S. C., Chazdon, R. L., and Cleveland, C. C.: Spatially robust estimates of biological nitrogen (N) fixation imply substantial human alteration of the tropical N cycle., *P. Natl. Acad. Sci. USA* 111, 8101–8106, doi:10.1073/pnas.1320646111, 2014.
- Taylor, K. E.: Summarizing multiple aspects of model performance in a single diagram, *J. Geophys. Res.*, 106, 7183–7192, 2001.
- Taylor, K. E., Stouffer, R. J., and Meehl, G. A.: AN Overview of CMIP5 and the Experiment Design, *B. Am. Meteorol. Soc.*, 93, 485–498, doi:10.1175/BAMS-D-11-00094.1, 2012.
- Thomas, R. Q., Zaehle, S., Templer, P. H., and Goodale, C. L.: Global patterns of nitrogen limitation: Confronting two global biogeochemical models with observations, *Glob. Change Biol.*, 19, 2986–2998, doi:10.1111/gcb.12281, 2013.
- Thomas, R. Q., Brookshire, E. J., and Gerber, S.: Nitrogen limitation on land: How can it occur in Earth System Models ?, *Glob. Change Biol.*, doi:10.1111/gcb.12813, 2015.
- Thornton, P. E., Rosenbloom, N. A., Mahowald, N. M., Lamarque, J. F., Rosenbloom, N. A., and Mahowald, N. M.: Influence of carbon-nitrogen cycle coupling on land model response to CO<sub>2</sub> fertilization and climate variability, *Global Biogeochem. Cy.*, 21, 1–15, doi:10.1029/2006GB002868, 2007.
- Todd-Brown, K. E. O., Randerson, J. T., Post, W. M., Hoffman, F. M., Tarnocai, C., Schuur, E. A. G., and Allison, S. D.: Causes of variation in soil carbon simulations from CMIP5 Earth system models and comparison with observations, *Biogeosciences*, 10, 1717–1736, doi:10.5194/bg-10-1717-2013, 2013.
- Todd-Brown, K. E. O., Randerson, J. T., Hopkins, F., Arora, V., Hajima, T., Jones, C., Shevliakova, E., Tjiputra, J., Volodin, E., Wu, T., Zhang, Q., and Allison, S. D.: Changes in soil organic carbon storage predicted by Earth system models during the 21st century, *Biogeosciences*, 11, 2341–2356, doi:10.5194/bg-11-2341-2014, 2014.
- Tuomi, M., Vanhala, P., Karhu, K., Fritze, H., and Liski, J.: Heterotrophic soil respiration – Comparison of different models describing its temperature dependence, *Ecol. Model.*, 211, 182–190, doi:10.1016/j.ecolmodel.2007.09.003, 2008.
- Tuomi, M., Thum, T., Järvinen, H., Fronzek, S., Berg, B., Harmon, M., Trofymow, J., Sevanto, S., and Liski, J.: Leaf litter decomposition – Estimates of global variability based on Yasso07 model, *Ecol. Model.*, 220, 3362–3371, doi:10.1016/j.ecolmodel.2009.05.016, 2009.
- Tuomi, M., Laiho, R., Repo, A., and Liski, J.: Wood decomposition model for boreal forests, *Ecol. Model.*, 222, 709–718, doi:10.1016/j.ecolmodel.2010.10.025, 2011.
- Viani, R. A. G., Rodrigues, R. R., Dawson, T. E., and Oliveira, R. S.: Functional differences between woodland savannas and seasonally dry forests from south-eastern Brazil: Evidence from 15N natural abundance studies, *Austral Ecol.*, 36, 974–982, doi:10.1111/j.1442-9993.2010.02233.x, 2011.
- Vicca, S., Luysaert, S., Peñuelas, J., Campioli, M., Chapin, F. S., Ciais, P., Heinemeyer, A., Höglberg, P., Kutsch, W. L., Law, B. E., Malhi, Y., Papale, D., Piao, S. L., Reichstein, M., Schulze, E. D., and Janssens, I. A.: Fertile forests produce biomass more efficiently, *Ecol. Lett.*, 15, 520–526, doi:10.1111/j.1461-0248.2012.01775.x, 2012.
- Vitousek, P. M., Menge, D. N. L., Reed, S. C., and Cleveland, C. C.: Biological nitrogen fixation: rates, patterns and ecological controls in terrestrial ecosystems., *Phil. T. Roy. Soc. Lond. Ser. B*, 368, 20130119, doi:10.1098/rstb.2013.0119, 2013.
- Wang, Y. P., Law, R. M., and Pak, B.: A global model of carbon, nitrogen and phosphorus cycles for the terrestrial biosphere, *Biogeosciences*, 7, 2261–2282, doi:10.5194/bg-7-2261-2010, 2010.
- Wärlind, D., Smith, B., Hickler, T., and Arneth, A.: Nitrogen feedbacks increase future terrestrial ecosystem carbon uptake in an individual-based dynamic vegetation model, *Biogeosciences*, 11, 6131–6146, doi:10.5194/bg-11-6131-2014, 2014.
- Weedon, G. P., Gomes, S., Viterbo, P., Shuttleworth, W. J., Blyth, E., Österle, H., Adam, J. C., Bellouin, N., Boucher, O., and Best, M.: Creation of the WATCH Forcing Data and Its Use to Assess Global and Regional Reference Crop Evaporation over Land during the Twentieth Century, *J. Hydrometeorol.*, 12, 823–848, doi:10.1175/2011JHM1369.1, 2011.
- Wieder, W. R., Cleveland, C. C., Smith, W. K., and Todd-Brown, K.: Future productivity and carbon storage limited by terrestrial nutrient availability, *Nat. Geosci.*, 8, 1–15, doi:10.1038/ngeo2413, 2015.
- Xu-Ri, Prentice, I. C., and Academy, C.: Terrestrial nitrogen cycle simulation with a dynamic global vegetation model, *Glob. Change Biol.*, 14, 1745–1764, doi:10.1111/j.1365-2486.2008.01625.x, 2008.
- Yi, X. and Yang, Y.: Independence of alpine meadow plants from soil organic matter for nitrogen supply: evidence from stable nitrogen isotopes, *Isot. Environ. Healt. S.*, 43, 51–56, 2007.
- Zaehle, S.: Terrestrial nitrogen – carbon cycle interactions at the global scale, *Philos. T. R. Soc. Lond. Ser. B*, 368, 1621, doi:10.1098/rstb.2013.0125, 2013.
- Zaehle, S., Friend, A. D., Friedlingstein, P., Dentener, F., Peylin, P., Schulz, M., and Cleve, V.: Carbon and nitrogen cycle dynamics in the O-CN land surface model: 2. Role of the nitrogen cycle in the historical terrestrial carbon balance, *Global Biogeochem. Cy.*, 24, 1–14, doi:10.1029/2009GB003522, 2010.
- Zaehle, S., Jones, C. D., Houlton, B., Lamarque, J.-F., and Robertson, E.: Nitrogen availability reduces CMIP5 projections of 21st century land carbon uptake, *J. Climate*, doi:10.1175/JCLI-D-13-00776.1, 2014a.
- Zaehle, S., Medlyn, B. E., De Kauwe, M. G., Walker, A. P., Dietze, M. C., Hickler, T., Luo, Y., Wang, Y.-P., El-masri, B., Thornton, P., Jain, A., Wang, S., Warlind, D., Weng, E., Parton, W., Iversen, C. M., Gallet-budynek, A., Mccarthy, H., Finzi, A. C., Hanson, P. J., Prentice, I. C., Oren, R., and Norby, R. J.: Evaluation of 11 terrestrial carbon-nitrogen cycle models against observations from two temperate Free-Air CO<sub>2</sub> Enrichment studies, *New Phytol.*, 202, 803–822, doi:10.1111/nph.12697, 2014b.
- Zhang, L., Hickel, K., Dawes, W. R., Chiew, F. H. S., Western, A. W., and Briggs, P. R.: A rational function approach for estimating mean annual evapotranspiration, *Water Resour. Res.*, 40, 1–14, doi:10.1029/2003WR002710, 2004.
- Zhu, Q. and Riley, W. J.: Improved modelling of soil nitrogen losses, *Nature Climate Change*, 5, 705–706, doi:10.1038/nclimate2696, 2015.