



Bacterial Community Composition and Potential Driving Factors in Different Reef Habitats of the Spermonde Archipelago, Indonesia

Hauke F. Kegler^{1,2*}, Muhammad Lukman³, Mirta Teichberg⁴, Jeremiah Plass-Johnson^{4,5}, Christiane Hassenrück^{1,6}, Christian Wild² and Astrid Gärdes¹

¹ Tropical Marine Microbiology, Department of Biogeochemistry and Geology, Leibniz Center for Tropical Marine Research, Bremen, Germany, ² Faculty of Biology and Chemistry (FB 2), University of Bremen, Bremen, Germany, ³ Marine Science Department, Faculty of Marine Science and Fisheries, Hasanuddin University, South Sulawesi, Indonesia, ⁴ Algae and Seagrass Ecology, Department of Ecology, Leibniz Center for Tropical Marine Research, Bremen, Germany, ⁵ Centre for Ocean Life, National Institute of Aquatic Resources (DTU-Aqua), Technical University of Denmark, Charlottenlund, Denmark, ⁶ HGF MPG Joint Research Group for Deep-Sea Ecology and Technology, Max Planck Institute for Marine Microbiology, Bremen, Germany

OPEN ACCESS

Edited by:

James Cotner,
University of Minnesota, USA

Reviewed by:

Guang Gao,
Nanjing Institute of Geography and
Limnology (CAS), China
Jason B. Sylvan,
Texas A&M University, USA

*Correspondence:

Hauke F. Kegler
hauke.kegler@gmail.com

Specialty section:

This article was submitted to
Aquatic Microbiology,
a section of the journal
Frontiers in Microbiology

Received: 15 January 2016

Accepted: 31 March 2017

Published: 20 April 2017

Citation:

Kegler HF, Lukman M, Teichberg M,
Plass-Johnson J, Hassenrück C,
Wild C and Gärdes A (2017) Bacterial
Community Composition and
Potential Driving Factors in Different
Reef Habitats of the Spermonde
Archipelago, Indonesia.
Front. Microbiol. 8:662.
doi: 10.3389/fmicb.2017.00662

Coastal eutrophication is a key driver of shifts in bacterial communities on coral reefs. With fringing and patch reefs at varying distances from the coast the Spermonde Archipelago in southern Sulawesi, Indonesia offers ideal conditions to study the effects of coastal eutrophication along a spatially defined gradient. The present study investigated bacterial community composition of three coral reef habitats: the water column, sediments, and mucus of the hard coral genus *Fungia*, along that cross-shelf environmental and water quality gradient. The main research questions were: (1) How do water quality and bacterial community composition change along a coastal shelf gradient? (2) Which water quality parameters influence bacterial community composition? (3) Is there a difference in bacterial community composition among the investigated habitats? For this purpose, a range of key water parameters were measured at eight stations in distances from 2 to 55 km from urban Makassar. This was supplemented by sampling of bacterial communities of important microbial habitats using 454 pyrosequencing. Findings revealed that the population center Makassar had a strong effect on the concentrations of Chlorophyll *a*, suspended particulate matter (SPM), and transparent exopolymer particles (TEP), which were all significantly elevated at the inshore compared the other seven sites. Shifts in the bacterial communities were specific to each sampled habitat. Two OTUs, belonging to the genera *Escherichia/Shigella* (Gammaproteobacteria) and *Ralstonia* (Betaproteobacteria), respectively, both dominated the bacterial community composition of the both size fractions of the water column and coral mucus. The sampled reef sediments were more diverse, and no single OTUs was dominant. There was no gradual shift in bacterial classes or OTUs within the sampled habitats. In addition, we observed very distinct communities between the investigated habitats. Our data show strong changes in the bacterial community composition at the inshore site for water column and sediment samples. Alarmingly, there was generally a high prevalence of potentially pathogenic bacteria across the entire gradient.

Keywords: eutrophication, 454 pyrosequencing, microbial communities, Spermonde Archipelago, bacterial pathogens

INTRODUCTION

Coastal coral reef systems in close vicinity to highly populated urban areas are often impacted by land-based activities. The Spermonde Archipelago, including its ~150 small islands, is located on a narrow, 60 km wide carbonate shelf platform in southern Sulawesi, Indonesia. The coral reefs fringing the islands are essential to sustain the livelihoods of thousands of fishermen in the archipelago as a source of income and building material for local construction (Pet-Soede et al., 2001). The Archipelago is characterized by an eutrophication gradient from nutrient-rich coastal waters to oligotrophic offshore waters (Edinger et al., 1998). Untreated sewage and pollutants from Makassar enter the system directly or via the river Jene Berang, which additionally discharges sediments and inorganic nutrients from the hinterland (Renema and Troelstra, 2001). This leads to eutrophication, one of the primary local threats to coastal marine ecosystems (Burke et al., 2011; Paerl et al., 2014). The first response to eutrophication is often an increase in phytoplankton biomass (Fabricius, 2011). The result is an increased availability of organic matter such as dissolved organic carbon (DOC) and subsequently transparent exopolymer particles (TEP; Passow, 2000; Verdugo et al., 2004; Verdugo and Santschi, 2010). High concentrations of TEP in the water column will in turn intensify aggregation and sedimentation processes due to their high stickiness (Passow, 2002; Azam and Malfatti, 2007). The sinking particles and TEP itself are rich sources of organic matter for both free-living and particle-attached bacteria in the water column (Passow and Alldredge, 1994; Kjørboe and Tang, 2003; Kramer et al., 2013).

Several studies found significant shifts in the bacterial community composition in eutrophic and organic matter rich conditions of reef waters (Meyer-Reil and Köster, 2000; Weinbauer et al., 2010; de Voogd et al., 2015), microbial biofilms (Sawall et al., 2012; Witt et al., 2012), and sediments (Uthicke and McGuire, 2007) often alongside an increase in total bacterial cell counts (Zhang et al., 2007, 2009; Dinsdale et al., 2008). The changes are often related to a transition from autotrophic to heterotrophic bacterial communities (Meyer-Reil and Köster, 2000; Witt et al., 2012). In the water column there are two groups of bacteria, “free-living” and “particle-attached,” which use different carbon sources and are both influenced differently by changes in water quality (Becquevort et al., 1998; Zhang et al., 2007). Understanding the response of microbial communities in different coral reef habitats to spatial gradients in eutrophication is of great importance in the context of increasing anthropogenic perturbations to coastal water quality in the Spermonde Archipelago. As they play such an important role in biogeochemical cycling and coral reef health, small shifts in microbial communities, induced by increased anthropogenic eutrophication, can further alter nutrient cycling, sedimentation, and organic matter export as well as promoting coral pathogens (Bruno et al., 2003; Fabricius, 2005; Lyons et al., 2010).

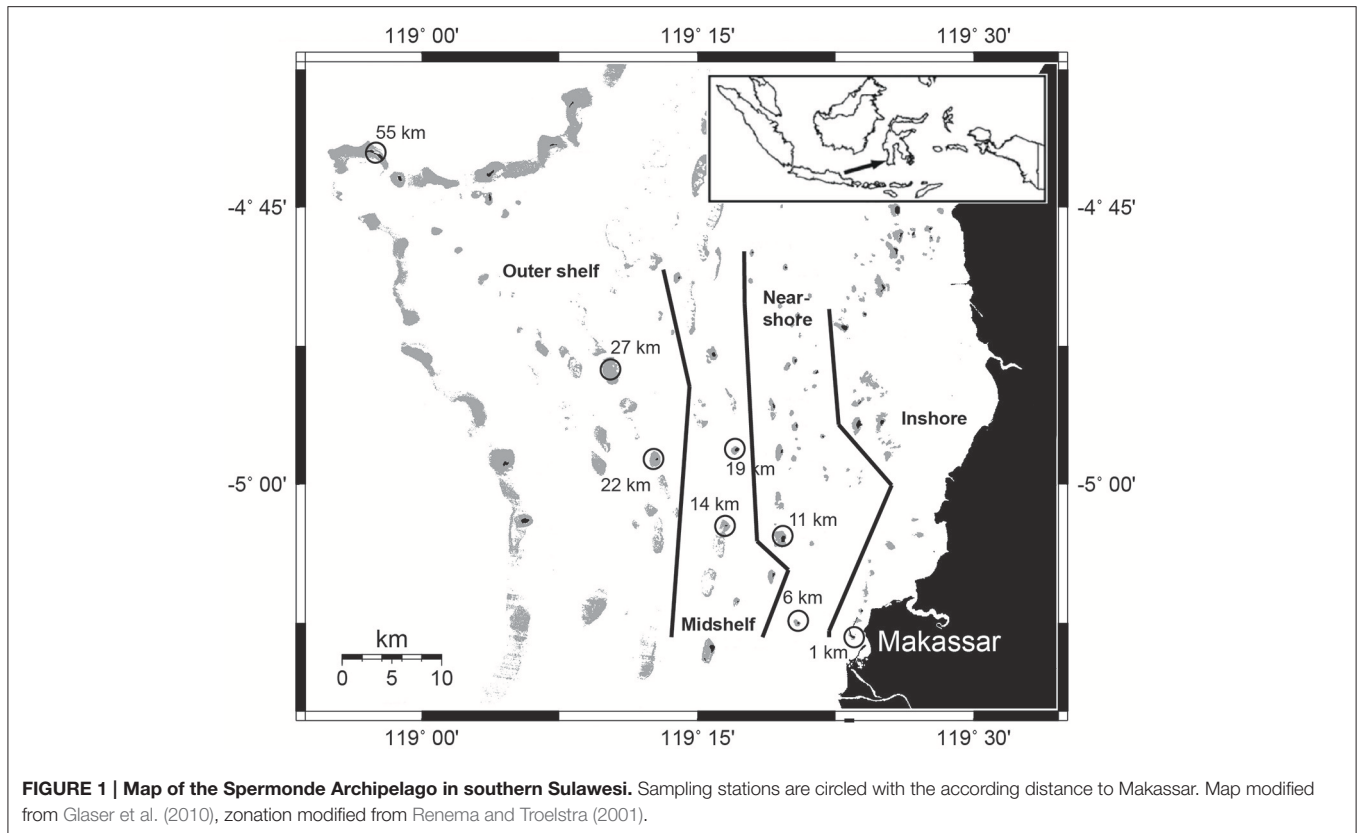
To date, there are only two studies of the Spermonde Archipelago that have focused on bacterial diversity of settlement tile biofilms (Sawall et al., 2012) and bacterial communities from different reef habitats, specifically within sponges and

the functional role of the associated bacteria (Cleary et al., 2015). Our study now further examines the relationship between bacterial communities, habitats, and water quality gradients in the Spermonde Archipelago, and additionally includes mucus of the common hard corals genus *Fungia* as an important bacterial habitat (Wild et al., 2004; Allers et al., 2008). We also included TEP, to the best of our knowledge, as the first study in the Spermonde Archipelago. TEP is an important, but frequently overlooked, biogeochemical water quality parameter that is pivotal for the organic matter composition and transition from the dissolved to the particulate fraction (Passow, 2002). Its formation is tightly linked to the interaction of phytoplankton with bacteria (Gärdes et al., 2011). With those properties, TEP may significantly alter bacterial communities and the ecosystem functions they provide (Passow, 2002; Buchan et al., 2014; Taylor et al., 2014). Through this multifaceted approach, including the eutrophication-related parameters and bacterial communities from different habitats, we wanted to elucidate if the relative abundance of different bacterial phylogenetic groups shift in response to changes in environmental and water quality parameters including: pH, salinity, inorganic nutrient availability, Chl a, DOC, TEP, and SPM along the eutrophication gradient. The main research questions were: (1) How do water quality and bacterial community composition change along a coastal shelf gradient? (2) Which water quality parameters influence bacterial community composition? (3) Is there a difference in bacterial community composition among the investigated habitats?

MATERIALS AND METHODS

Study Sites

Sampling was carried out at eight islands across the continental shelf of the Spermonde Archipelago in South Sulawesi, Indonesia after the wet monsoon season in February 2013 (Figure 1). Due to environmental and ecological variability across the shelf, the archipelago has been divided into several ecological zones running parallel to the coast line (Moll, 1983; Renema and Troelstra, 2001). The chosen sites represent varying exposure to eutrophication from an inshore station in close proximity (1 km) to metropolitan Makassar (population app. 1.4 million) to the outer shelf break at 55 km, and were therefore classified into four zones (modified from Moll, 1983; Figure 1). The inshore site is characterized by greatly reduced water clarity and is frequently exposed to discharge from rivers and effluents from the city of Makassar (Moll, 1983; Renema and Troelstra, 2001; Sawall et al., 2011). Near-shore and midshelf sites only receive additional effluent loads during times of increased riverine inputs in monsoon seasons (Cleary et al., 2005). All other sites are only affected while experiencing extreme rain events. All islands with one exception are inhabited. Only the outer shelf site at 27 km is a submerged reef platform. We standardized the sampling by always sampling during high tide in the morning hours and by choosing a site in the northwestern area of each island, the area of highest reef accretion.



Environmental and Water Quality Parameters

The environmental parameters (temperature, salinity, and pH) and chlorophyll *a* were measured with a Eureka Manta 2 multiprobe (*Measurement Specialities, Hampton, USA*). For the water quality analyses five replicate water samples were taken from 5 m water depth (which was ~1 m above the substrate) with a 5 l Niskin bottle (*HydroBios, Kiel, Germany*). From each replicate subsamples were taken for measurement of the water quality parameters (inorganic nutrients, DOC, TEP, and SPM). Samples were stored at -20°C in the dark until analysis immediately after returning to the field station. The longest travel time was no more than 3 h. Inorganic nutrients (nitrite, nitrate, phosphate, and silicate) were measured spectrophotometrically with a Flowsys continuous flow analyser (*Unity scientific, Brookfield, USA*). For DOC, samples were filtered through $0.45\ \mu\text{m}$ pore Whatman GF/F filters (*Whatman, GE Healthcare, Pittsburgh, USA*) and acidified with HCl (pH below 2). The measurement was completed via high-temperature oxidic combustion (HTOC) using a TOC-VCPH TOC analyzer (*Shimadzu, Mandel, Canada*). Hansell artificial seawater standards (Hansell laboratory RSMAS, University of Miami) and ultrapure water blanks were used for calibration and quality control. To determine SPM mass, pre-combusted GF/F filter were weighed on a ME 36S balance (*Sartorius, Göttingen, Germany*) before and after filtration of known volume of sample water. Difference in weight was determined after filters were dried for

24 h at 40°C . TEP was quantified with an updated protocol (Engel, 2009) of the spectrophotometric method first introduced by Passow and Alldredge (1995). In short this method relates the adsorption of a dye to the weight of polysaccharides filtered on $0.4\ \mu\text{m}$ polycarbonate filters. To relate the absorbance measured on the filters to a reference polysaccharide we prepared a calibration curve by filtering and staining different volumes of Gum Xanthan from *Xanthomonas campestris* cultures.

Bacterial Community Analyses

From each site, a 1 L subsample was filtered sequentially using 3 and $0.2\ \mu\text{m}$ Whatman Nuclepore polycarbonate filters (*Whatman, GE Healthcare, Pittsburgh, USA*), to separate bacterioplankton in two selected size fractions representing “particle-attached” and “free-living” bacteria, respectively. DNA extraction for water column samples followed the protocol established by Boström et al. (2004) without modification. In short, cells collected onto filters were lysed in two steps of lysozyme and proteinase K treatment. DNA was recovered using sodium acetate and isopropanol precipitation. Surface sediment was collected from the uppermost 1 cm of sediment at each site. Sediment samples were allocated to 2.0 ml tubes (Eppendorf, Germany) and stored at -20°C until extraction. Coral mucus samples were obtained from individual corals of the genus *Fungia* collected at the same depth by exposing them to air for about 1 min to stimulate the mucus secretion. DNA extraction for sediments and mucus were conducted using the PowerSoil™

DNA Isolation Kit (MO BIO Laboratories, Carlsbad, USA) with modification of two steps of the protocol: (1) we did not incubate for 5 min at 4°C but went straight for the centrifugation and (2) we used 50 µl of elution buffer instead of 100 µl. Extracted DNA samples were sequenced, after 16S rRNA amplification (PCR), Roche/454-tagging and preparation of the Pico Titer Plate, on a Genome Sequencer FLX System + Titanium (Roche, Basel, Switzerland) by LGC Genomics (Berlin, Germany). 16S rRNA primers 341F (5'-CCTACGGGNGGCWGCAG-3') and 1061R (5'-CRRACGAGCTGACGAC-3') were used, targeting the V3–V6 hypervariable region (Ong et al., 2013). Sequences were analyzed in mothur (Schloss et al., 2009), following the standard operating procedure for 454 data with the following exceptions: After pyronoise removal in mothur, primer sequences were removed using cutadapt (Martin, 2011). Only sequences, which contained the forward primer, were considered for the further analysis. After the alignment of the sequences against the SILVA seed reference database (release 123) provided by mothur, we did not perform a preclustering step as our data set was small enough to proceed with the analysis without high computational costs. Operational taxonomic units (OTUs) were defined at a sequence similarity cut-off of 97% using average linkage hierarchical clustering. Unclassified sequences as well as sequences affiliated with mitochondria, chloroplasts, archaea, and eukaryotes were removed from the data set. An overview of the bioinformatic sequence analysis is provided in **Supplementary Table 2**. The taxonomic classification of representative sequences of OTUs affiliated with potentially pathogenic bacterial taxa was further curated using NCBI blastn against the 16S ribosomal database (date accessed: 19.10.2016). Sequence data is available at the European Nucleotide Archive (ENA), accession no. PRJEB18641.

For cell enumeration staining with 4',6'-diamidino-2-phenylindole (DAPI) for epifluorescence microscopy was conducted by incubating filter slices with 20 µl of a 1 µg ml⁻¹ DAPI solution for 5 min in the dark. Afterwards they were washed with 80% ethanol, rinsed with distilled water and subsequently dried for 30 min. in the dark. Then 30 µl 4:1 Vecta shield and glycerin solution was added (Vector Laboratories, Burlingame, USA) before enumeration. Ten fields of view were counted at 1,000x magnification from triplicate slices for each sample.

Statistical Analysis

Differences among sites in environmental parameters and water quality were analyzed with SigmaPlot 13.0 software (Systat Software, Inc., San Jose, California, USA). Values are given as arithmetic mean ± standard deviation. All parameters failed the Shapiro-Wilk test for normal distribution, so alternative non-parametric Kruskal-Wallis ANOVA on ranks was performed. Whenever significant differences were detected, pairwise comparisons were conducted using the implementation of the Tukey's HSD *post-hoc* test for non-parametric data in SigmaPlot. Principle component analysis (PCA), including all environmental and water quality parameters, was conducted using the PRIMER 6.16 software (Clarke and Gorley, 2006). Additionally, the effect of sampling site, i.e., the distance to

Makassar on each parameter was tested separately with Kruskal Wallis tests and spearman correlations.

Alpha diversity of the bacterial communities was assessed using Hill numbers (Chao et al., 2014). The Hill numbers $q = 0$ (number of OTUs), $q = 1$ (exponential Shannon index), and $q = 2$ (inverse Simpson index) were calculated based on 100 repeated subsampling runs to rarefy the data set to the minimum library size (191 sequences). Kruskal-Wallis and spearman correlations were conducted to test the effect of reef habitat and distance to Makassar on bacterial alpha diversity, respectively. Differences in bacterial community composition (beta diversity) among reef habitats and with increasing distance to Makassar were tested using PERMANOVA in combination with ANOSIM.

If not stated otherwise, statistical analyses were conducted in R using the R core distribution (R Core Team, 2015) and the R package vegan (Oksanen et al., 2016).

RESULTS

Spatial Variation of Environmental and Water Quality Parameters

The individual islands differed significantly in many of the sampled environmental and water quality parameters, including chlorophyll *a*, TEP, silicate and combined nitrite and nitrate (NO_x), as revealed by Kruskal-Wallis ANOVA (**Table 2**). However, Spearman correlations were often low, indicating only a weak monotonous relationship with the distance from Makassar. Furthermore, based on correlations there was no observable trend in environmental parameters (Salinity, temperature, pH) or inorganic nutrients (PO₄, NO_x) across the surveyed gradient from the inshore site to the outer shelf break (**Tables 1, 2**). Only for silicate there was additionally a strong negative correlation (Spearman's $\rho = -0.83$) with increasing distance from Makassar. In contrast to inorganic nutrients, all measured organic nutrient parameters showed changes associated with distance from shore (**Figure 2**). Chlorophyll *a* exhibited significantly higher concentrations inshore ($1.50 \pm 0.21 \mu\text{g l}^{-1}$) compared to the furthest outer shelf site ($0.14 \pm 0.05 \mu\text{g l}^{-1}$), but overall correlation to distance from Makassar remained weak (Spearman's $\rho = -0.44$). No significant differences were found in SPM concentrations although there was a weak general decreasing trend from inshore to the outer shelf (Spearman's $\rho = -0.28$). There were significant differences between the highest concentrations of DOC ($97.44 \pm 17.76 \mu\text{mol l}^{-1}$) at the closest near-shore station and lowest concentrations, $78.46 \pm 18.04 \mu\text{mol l}^{-1}$, at the inshore station. DOC concentrations between these two zones were also significantly different. Although cross-shelf concentrations of DOC were significantly different ($P < 0.01$), there was only a very low correlation to the distance from Makassar (Spearman's $\rho = -0.22$). Overall chlorophyll *a*, TEP and SPM showed a very similar pattern with steeply declining concentrations between the inshore and the first near-shore site. Near-shore concentrations of TEP were significantly ($P < 0.02$) higher ($301.38 \pm 11.98 \mu\text{g Xeq l}^{-1}$) than the most distant outer shelf site ($26.34 \pm 1.43 \mu\text{g Xeq l}^{-1}$), and the correlation to distance from Makassar was strong (Spearman's $\rho = -0.83$). The

TABLE 1 | Mean values for the measured environmental and water quality parameters \pm SD across the shelf gradient.

	Inshore	Near-shore		Mid-shelf			Outer shelf	
	Lae Lae (1 km)	Samalona (6 km)	Barrang Lompo (11 km)	Bonetabung (14 km)	Badi (19 km)	Lumu Lumu (22 km)	K. Kassi (27 km)	Kapoposang (55 km)
Temp. ($^{\circ}$ C)	29.81 \pm 0.03	29.92 \pm 0.05	30.04 \pm 0.02	30.08 \pm 0.05	29.7 \pm 0.02	30.09 \pm 0.03	29.41 \pm 0.02	29.84 \pm 0.05
Salinity	32.2 \pm 0.02	31.8 \pm 0.12	32.1 \pm 0.03	32.2 \pm 0.03	31.9 \pm 0.03	32.3 \pm 0.02	31.9 \pm 0.02	31.6 \pm 0.02
pH	8.16 \pm 0.01	8.2 \pm 0.01	8.17 \pm 0.01	8.21 \pm 0.01	8.18 \pm 0.01	8.20 \pm 0.00	8.17 \pm 0.00	8.21 \pm 0.01
BOD water column (mg l ⁻¹ h ⁻¹)	0.008 \pm 0.006	0.041 \pm 0.008	0.010 \pm 0.006	0.016 \pm 0.002	0.011 \pm 0.002	0.012 \pm 0.004	0.020 \pm 0.005	0.020 \pm 0.003
BOD surface sediment (mg l ⁻¹ h ⁻¹)	0.036 \pm 0.007	n/a	0.093 \pm 0.013	0.016 \pm 0.003	0.036 \pm 0.011	0.009 \pm 0.002	0.022 \pm 0.003	0.005 \pm 0.015
BOD 3 cm sediment (mg l ⁻¹ h ⁻¹)	0.030 \pm 0.001	n/a	0.053 \pm 0.012	0.018 \pm 0.002	0.041 \pm 0.010	n/a	0.031 \pm 0.003	0.005 \pm 0.002
NO _x (μ M)	0.46 \pm 0.13	0.40 \pm 0.05	0.48 \pm 0.09	0.13 \pm 0.03	0.25 \pm 0.08	0.16 \pm 0.03	0.48 \pm 0.05	0.27 \pm 0.03
PO ₄ (μ M)	0.11 \pm 0.01	0.09 \pm 0.01	0.09 \pm 0.01	0.08 \pm 0.01	0.08 \pm 0.01	0.08 \pm 0.01	0.11 \pm 0.01	0.09 \pm 0.01

TABLE 2 | Kruskal Wallis tests and spearman correlations on effect of sampling site, i.e., the distance to Makassar on each water quality parameter.

	Rho	p	Significance
DOC	-0.22	1.25E-01	ns
NO _x	-0.41	3.38E-03	**
PO ₄	-0.27	5.39E-02	ns
Si	-0.83	5.32E-14	***
SPM	-0.28	6.60E-02	ns
TEP	-0.83	6.09E-07	***
Chl a	-0.42	2.29E-12	***
pH	0.36	4.32E-09	***
Salinity	-0.33	4.03E-08	***
Temp. ($^{\circ}$ C)	-0.22	4.76E-04	***

ns, non-significant; *p < 0.05; **p < 0.01; ***p < 0.001.

two near-shore sites showed intermediate concentrations while all following stations were in a comparable range to the outermost site.

A PCA of the environmental and water quality data was able to capture 66.2% of the variation among sites on the first two principal components (Figure 3). The inshore site separates clearly from near-shore and mid-shelf sites by the first principal component. A second group of offshore sites separated on the second PC largely driven by lower salinity and pH-values. This was confirmed by the hierarchical clustering (Supplementary Image 1) where there was low similarity between the inshore island and the remaining sites. Within those remaining islands 2 additional larger clusters formed. Samalona and Barrang Lompo, both categorized as near-shore islands showed a very high similarity (Supplementary Image 1). Additionally, all mid-shelf islands formed a distinct group significantly different from the other groups.

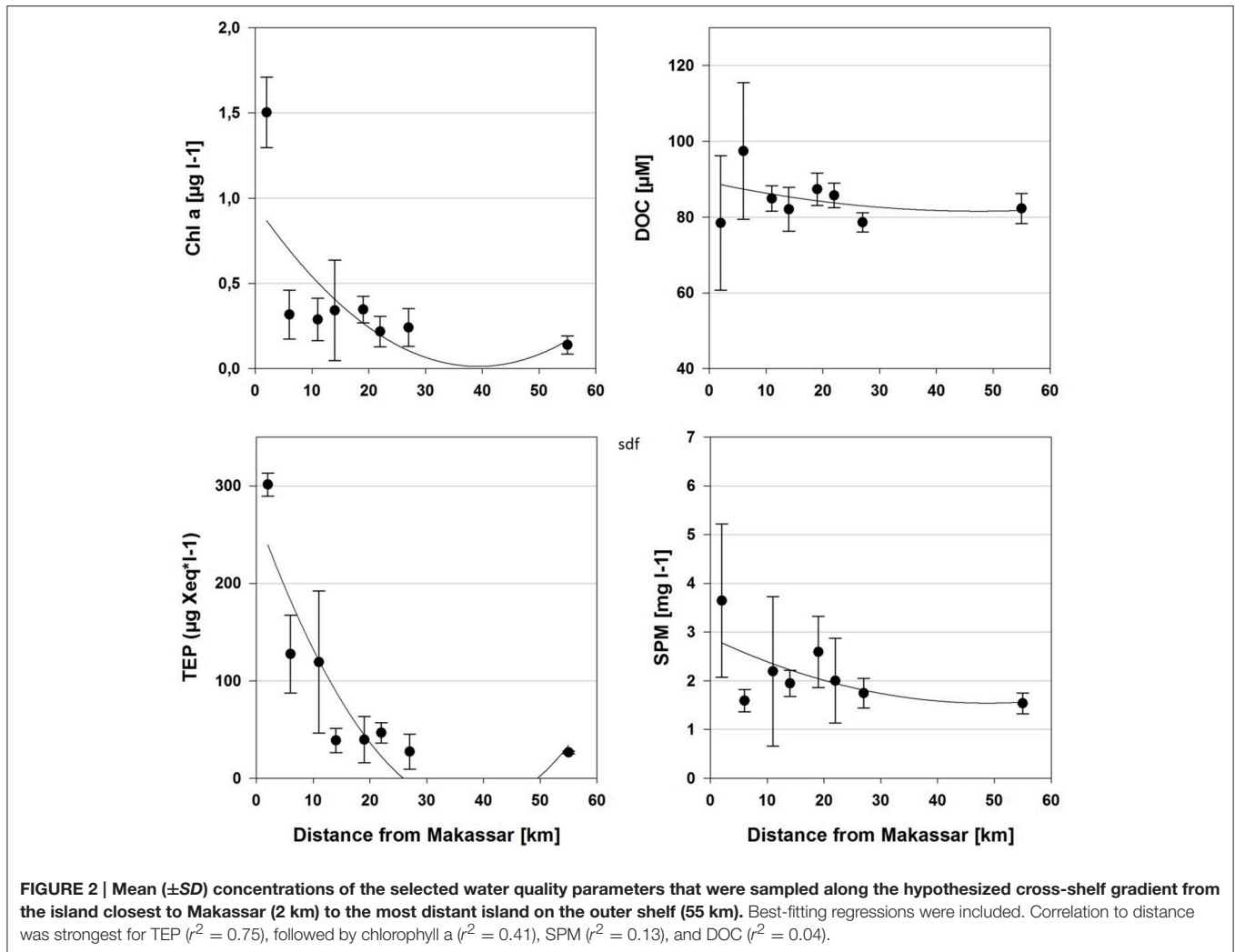
Biological oxygen demand of the water column and sediments showed high variability and did not exhibit a clear pattern across

the gradient (Table 1). Within the water column the highest bulk oxygen demand was measured at the 6 km station (0.041 \pm 0.008 mg l⁻¹ h⁻¹) and the lowest at 11 km distance from Makassar (0.010 \pm 0.008 mg l⁻¹ h⁻¹). For both surface and 3 cm deep sediments the highest oxygen uptake was measured at the 11 km site (0.093 \pm 0.013 and 0.053 \pm 0.012 mg l⁻¹ h⁻¹, respectively), while lowest BOD was measured at the outer shelf site at 55 km (0.005 \pm 0.015 and 0.005 \pm 0.002 mg l⁻¹ h⁻¹, respectively).

Spatial Variation of Bacterial Communities

No DAPI counts were conducted for the water column of the furthest outer shelf station and the sediments. DAPI cell counts of the combined water column bacterial abundance ranged from 4.39 \times 10⁶ \pm 4.70 \times 10⁶ cells ml⁻¹ in the outer shelf area to 7.94 \times 10⁶ \pm 1.08 \times 10⁶ cells ml⁻¹ at the inshore site (Supplementary Table 1). At the inshore site compared to midshelf sites 3.23 \times 10⁶ \pm 2.66 \times 10⁵ cells ml⁻¹ to 5.87 \times 10⁶ \pm 5.45 \times 10⁵ were counted, respectively. DAPI cell counts for the particle-attached fraction ranged from 1.02 \times 10⁶ \pm 7.44 \times 10⁵ cells ml⁻¹ within the midshelf sites to 2.07 \times 10⁶ \pm 5.22 \times 10⁵ cells ml⁻¹ at the inshore site. Bacterial abundance in the *Fungia* mucus ranged from 3.34 \times 10⁷ \pm 2.58 \times 10⁶ cells ml⁻¹ found within the near-shore area to 9.61 \times 10⁷ \pm 7.88 \times 10⁶ cells ml⁻¹ at one of the midshelf sites (Supplementary Table 1).

The molecular analysis of the bacterial communities with 454 Pyrosequencing yielded on average 1051 \pm 496 and 1392 \pm 110 sequences after quality control per station for the 0.2 μ m and 3.0 μ m size fractions of the water column, respectively (Supplementary Table 1). For the investigated reef sediments we identified an average of 822 \pm 90 sequences at each station, while there was an average of 1,081 \pm 558 sequences per station in the *Fungia* mucus. Alpha diversity indices (e.g., Hill q = 2, Supplementary Table 1) were lowest in the free-living fraction of the water column (from 2.49 \pm 0.02 to 6.18 \pm 0.04) and *Fungia* mucus (from 3.65 \pm 0.03 to 5.6), followed by the particle-attached fraction of the water column (from

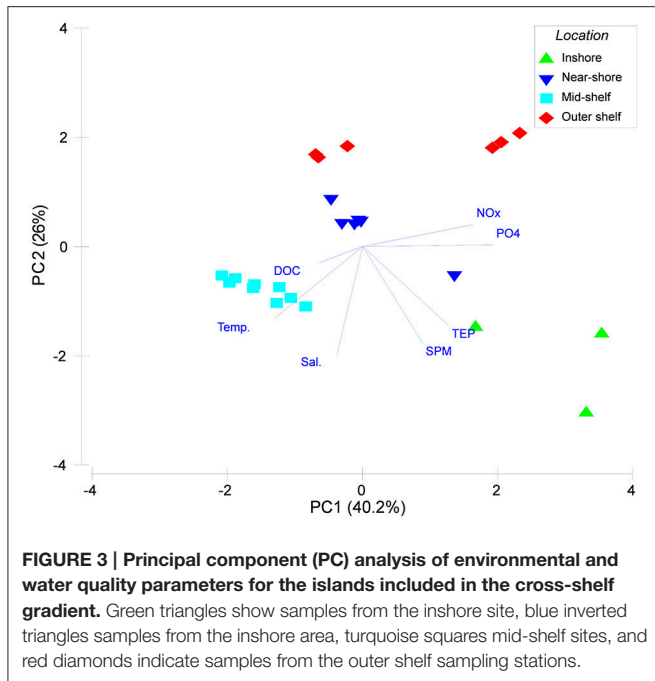


3.68 ± 0.03 to 11.54 ± 0.09) and sediments (from 87.10 ± 1.37 to 156.48 ± 0.85). Bacterial communities in the reef sediments were generally more diverse (**Supplementary Table 1**) and the taxa were more evenly distributed compared to the coral mucus and water column. Rarefaction curves of the sediment, contrary to water column and mucus samples, still increased steeply (**Supplementary Image 2**). This indicates that some fraction of the diversity was not covered due to the comparatively low number of sequences obtained from the sediments.

The composition of the bacterial communities in the sediment was distinct from the other habitats based on the clustering of Bray-Curtis dissimilarity coefficients (**Figure 4A**). This was confirmed by a PERMANOVA analysis, which revealed significantly different communities between the habitats [$R^2 = 0.47$, $F_{(3, 29)} = 7.90$, $P < 0.001$], but not with distance to Makassar [$R^2 = 0.03$, $F_{(3, 29)} = 1.36$, $P > 0.05$]. Subsequent pairwise tests showed that all habitats, except the *Fungia* mucus compared with both size fractions of the water column, were significantly different from each other (ANOSIM, $P < 0.05$).

Water Column

The free-living fraction of the water column bacterial communities showed variation among stations across the spatial gradient (**Figure 4**). Three classes constituted the majority of all identified bacteria of the free-living fraction of the water column: the Alpha-, Beta-, and Gammaproteobacteria (**Figure 4B**). The relative abundance of Gammaproteobacteria ranged from 29% at the 6 km sampling station to 69% at the stations on the outer shelf site at 27 km (**Figure 4**). In contrast, Alphaproteobacteria showed highest sequence proportions (22%) at the inshore site at 6 km, and decreased toward the mid-shelf sites (lowest relative abundance 5% at 19 km). Betaproteobacteria also showed no obvious trends in changing relative abundances across the gradient, and their relative contribution to the total community varied from 13–38%. Within those three main classes four OTUs, all of them potential human pathogens, displayed a large contribution to the community composition of the free-living fraction of the water column: *Escherichia/Shigella* (Gammaproteobacteria), *Ralstonia* (Betaproteobacteria), *Stenotrophomonas* (Gammaproteobacteria), and



Phenylobacterium (Alphaproteobacteria; **Figure 5**). The relative abundance of *Escherichia/Shigella*, the causative agent for shigellosis, ranged from 20% at the 6 km sampling station to 58% at the stations on the outer shelf site at 55 km (**Figure 5**). *Ralstonia* showed highest concentrations (37%) at the mid-shelf site at 11 km, and decreased toward the outer shelf sites (8% at 19 km). *Stenotrophomonas* and *Phenylobacterium* showed no obvious trends across the gradient, and their relative contribution to the total community varied from <1 to 24 and 2 to 10%, respectively. Other potentially pathogenic bacterial groups that were found among the 10 most dominant OTUs were *Mycobacterium*, the causative agent of tuberculosis and leprosy, and *Staphylococcus* (Firmicutes). There was no overall trend in the abundance of the potentially pathogenic OTUs with distance from Makassar. While e.g., *Escherichia/Shigella* increased in abundance with distance, *Mycobacterium* (Actinobacteria) is most abundant at the very inshore site closest to Makassar.

Escherichia/Shigella and *Ralstonia* were, on average, also the dominant OTUs that were retained on 3.0 μm filters, and thus being defined as “particle-attached.” The highest relative abundance of *Escherichia/Shigella* was found at the 22 km site (44%), while the lowest abundance was observed at the 14 km site (6%). *Ralstonia* was generally found in lowest abundance at 14 km (10%, **Figure 4**). The relative abundance was highest at the mid-shelf site at 22 km (27%). The cyanobacterium *Synechococcus* was the third most abundant OTU observed in the particle-attached fraction, with an average abundance of 10%. This OTU was not detected in any but one sample of the free-living water fraction at a relative abundance <1%. The prevalence of potentially pathogenic OTU, including *Escherichia/Shigella*, *Ralstonia*, *Phenylobacterium*, and *Mycobacterium*, were again high. For potentially pathogenic, particle-attached bacteria, there was no overall pattern in relative abundance across the

gradient. There were significant but weak differences in bacterial community composition between the “free-living” and “particle-attached” size fraction (ANOSIM P 0.003, R 0.25). Calculated Bray-Curtis dissimilarities were also often >50% (**Figure 4A**).

Fungia Mucus

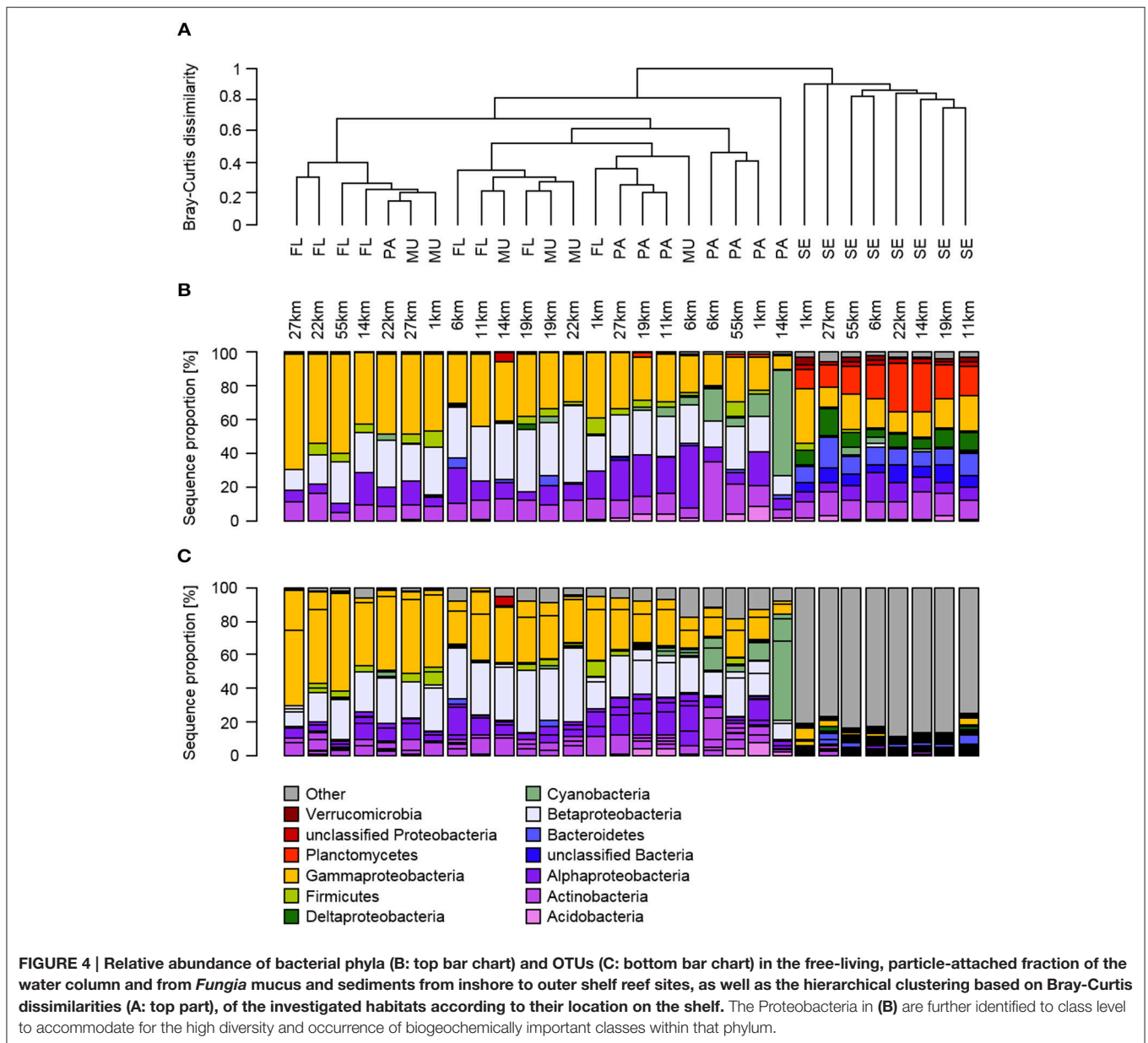
Overall, the bacterial community composition of the mucus samples showed no statistically significant differences to both water column size fractions. On the class level Alpha-, Beta-, and Gammaproteobacteria were again the most dominant taxa. The Gammaproteobacteria contributed to 22–49% of the total bacterial community, Betaproteobacteria 22–46% and Alphaproteobacteria 6–37% (**Figure 4B**). There was no pattern in the changes of the relative abundance across the gradient. *Escherichia/Shigella* and *Ralstonia* were also the two dominant OTU in the *Fungia* mucus (**Figure 4C**). They alternated as the single most dominant OTU along the gradient. *Escherichia/Shigella* contributed to 10–44% of the total bacterial community, *Ralstonia* 6–37% and *Phenylobacterium*, as the third most abundant OTU, ranged from 3–9%. Members of the also potentially pathogenic OTU *Staphylococcus*, *Propionibacterium*, and *Mycobacterium* were detected at similar relative abundances throughout the observed gradient (**Figure 5**).

Reef Sediments

Overall the sediment communities were more diverse and even in their community composition and showed less variation across the shelf on the class level (**Supplementary Table 1, Figure 4C**). Some classes were almost exclusively found in the sediment, including Planctomycetes (11–29%), Bacteroidetes (8–18%), and Deltaproteobacteria (5–16%, **Figure 4**). From the identified classes only Gammaproteobacteria exhibited stronger changes in relative abundance across the gradient, with higher relative OTU abundance (32%) at the inshore site at 1 km, which is continuously affected by effluents from urban Makassar, compared to further off-shore (lowest relative abundance observed at 27 km, 11%). In contrast to the mucus and water column samples, there was also no dominance of few individual OTUs in the bacterial community. The OTUs with highest average contribution to total relative abundance were *Muriicola* (2%, Bacteroidetes), and unclassified members of the gammaproteobacterial JTB255 marine benthic group (2%) and the firmicute family Carnobacteriaceae (1%). Additionally, the relative contribution of the investigated potentially pathogenic OTUs to the overall community composition was much lower (**Figure 5**).

DISCUSSION

With this study we can shed new light on shifts in bacterial communities of the water column, reef sediments and coral mucus in response to coastal eutrophication. Similar to other previous investigations we found strong changes in water quality parameters along the gradient (Sawall et al., 2011). But effects could only be detected for the inshore site and were limited to a few parameters, namely Si, chlorophyll *a*, and TEP. Although SPM showed a very similar pattern, the differences were not

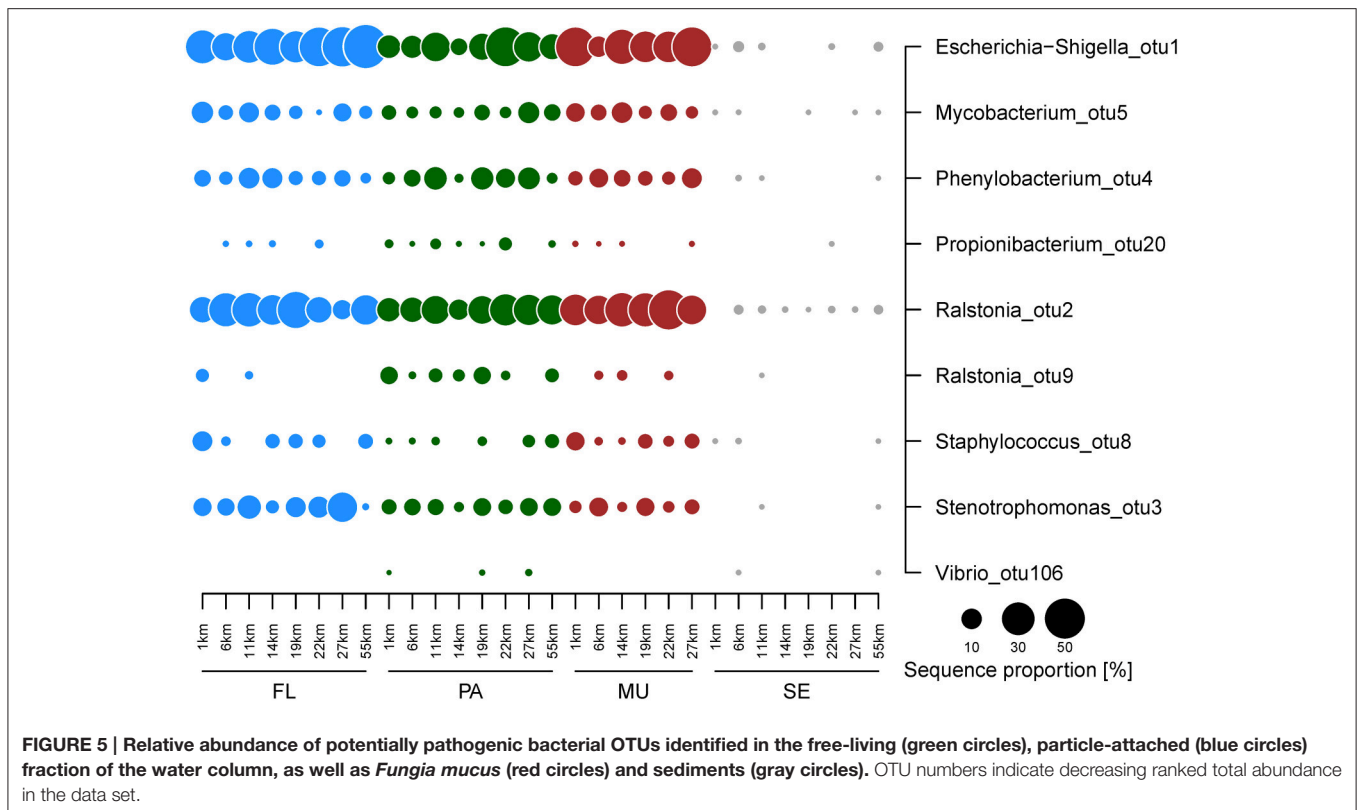


significant. While there were no significant effects of the water quality parameters and distance from Makassar on the bacterial community composition we detected distinct and significant differences between the habitats. Overall, the sediment bacterial communities were more diverse and heterogeneous, comparable to previous descriptions of carbonate-based reef sediments (Hewson et al., 2003). Moreover, while Gammaproteobacteria was the most dominant class in the water column and *Fungia* mucus, Planctomycetes was the most abundant class in the reef sediments.

Environmental Parameters

Excluding the highly eutrophied inshore site, concentrations of chlorophyll *a*, TEP and SPM in the Spermonde Archipelago

where within the range of other near-shore reef ecosystems of the western Pacific, e.g., the Great Barrier Reef, Australia (Alongi et al., 2015), New Caledonia (Fichez et al., 2010) or, for chlorophyll *a*, previous studies of the same area (Sawall et al., 2011). Interestingly, the effect of riverine and urban sewage is limited only to the inshore site. One possible reason is a dilution effect by a strong longshore current in the Spermonde Archipelago. A large proportion of the Indonesian through-flow, connecting the Pacific with the Indian Ocean, is channeled through the Makassar Strait, leading to a constant southward flow of water (Gordon et al., 2003). As concentrations of chlorophyll *a* and the severity of eutrophication-related processes were highly correlated to water residence time (Delesalle and Sournia, 1992; Howarth et al., 2011), the rapid flushing can have a dilution effect



on the measured parameters. This is also the case in the rainy season, when increased riverine input delivers more nutrients to the inshore and near-shore sites. However, since the predominant current through the Makassar Strait is southward, the river plume of the Jene Berang river is also deflected south and only reaches out to the closest near-shore station (Renema and Troelstra, 2001). In both cases, excess nutrients will not be available for phytoplankton growth and bacterial production in areas north of the deflected plume, e.g., the mid-shelf and outer shelf sites.

TEP concentrations can be used as a good integrative indicator for differences in the water quality among the sites as well as for a strong interaction between phytoplankton and the bacterial communities, which results in TEP production (Smith et al., 1995; Gärdes et al., 2011). TEP was strongly correlated to chlorophyll *a*, SPM concentrations and DAPI cell counts in the water column. Additionally, TEP may also serve as a food source and habitat for bacteria (Passow, 2002), increase particle aggregation and subsequent sedimentation (Gärdes et al., 2011; Cárdenas et al., 2015).

Concentrations of DOC in the Spermonde Archipelago are at the higher end described for tropical reef ecosystems (Dinsdale et al., 2008; Nelson et al., 2011), but they do not follow the general decreasing trend, with increasing distance to Makassar, observed for chlorophyll *a*, TEP, and SPM. This could be explained through a combination of DOC rapidly being taken up by heterotrophic bacteria in the water column and aggregation into larger particles (Passow and Alldredge, 1994; Passow, 2000; Nelson et al., 2011).

Spatial Variation of Bacterial Communities

On the community level there were no corresponding shifts along the measured water quality gradients. In the present study, e.g., significantly higher bacterial cell counts in the water column were observed at the inshore site at 1 km distance to Makassar. This can be the result of an increased uptake of available DOC at the inshore site (Ferrier-Pagès et al., 1998). With an increased availability of nutrients and organic matter, the expected shift would be toward a community dominated by heterotrophic bacteria specialized in assimilating the available organic matter. Interestingly, this pattern was not reflected in the sequencing data of neither the free-living nor the particle-attached fractions of the water column. Likely there is a time lag between the additional availability of food sources and the response in the bacterial community. Together with the low water residence time in the Spermonde Archipelago, driven by strong southward water flow due to the Indonesian through-flow (Gordon et al., 2008), this can lead to a shifted pattern in community composition. In support of that, there was a much higher relative abundance of Gammaproteobacteria at the outer shelf sites compared to the eutrophied inshore station. Within that class, *Escherichia/Shigella* was the dominant OTU. Bacteria of this genus are known human pathogens, as well as indicators for drinking water quality and fecal contamination (Baudišová, 1997; Edberg et al., 2000; Odonkor and Ampofo, 2013), and their increased abundance can be attributed to human impact, likely from urban Makassar. Some of the other potential pathogenic taxa, e.g., *Mycobacterium* and *Staphylococcus*, were found at highest

relative abundances closer to the mainland. This is noteworthy, as they thrive well in eutrophic conditions (Jacobs et al., 2009), or in areas with high human population density (Yoshpe-Purer and Golderman, 1987). All of the abovementioned taxa also contain OTUs that are capable of degrading petroleum, another source of human coastal pollution (Roy et al., 2002). Among the Alphaproteobacteria, which were most abundant in the water column of the chlorophyll-rich inshore waters of the Spermonde Archipelago, are taxa known to correlate well to waters rich in inorganic nutrients and phytoplankton biomass (Allers et al., 2007; Teira et al., 2008). Although some of the most common oligotrophic bacteria, such as members of the *SAR11/Pelagibacter* clade (Tout et al., 2014; West et al., 2016), belong to the Alphaproteobacteria class, those taxa were only rarely found in the present investigation. There was no observable gradual change in Betaproteobacteria occurrence across the shelf in the Spermonde Archipelago. Betaproteobacteria in general, and OTUs from the genus *Ralstonia* as the main constituents of that class, are very common to freshwater (Lau et al., 2013). There are likely overriding local effects at the individual study sites, such as freshwater seepage from the densely populated islands, which are additionally lacking waste water treatment facilities (Ferse et al., 2012; Williams et al., 2014). This indicates a local source of organic matter for Betaproteobacteria from island effluents. This is further corroborated at the only uninhabited site, a submerged reef platform in the mid-shelf area, which showed the lowest relative abundance in Betaproteobacteria/*Ralstonia* in free-living and particle-attached habitats.

Observations made on the community composition of the mucus samples were similar to those of the water column, which was reflected in the non-significant differences in overall community composition. Again, Gamma- and Betaproteobacteria were on average the most dominant classes. *Escherichia/Shigella* was again the single most common OTU in the mucus samples. This is an unusual observation, as members of the *Escherichia/Shigella* taxon are usually not present in mucus samples in such high relative abundances (Koren and Rosenberg, 2006). This may indicate that the *Fungia* corals at the sampled islands and their fragile host-symbiont balance are already severely disturbed potentially enabling *Escherichia/Shigella* to colonize the coral mucus and capitalize on the available carbon sources. Findings concerning the Betaproteobacteria from the present study are supported by comparisons of bacterial communities in mucus of *Fungia* sp. from the Red Sea and aquaria by Kooperman et al. (2007). They also found increased occurrences of Betaproteobacteria in the aquaria samples with altered water quality. They are also known to correlate strongly to the availability of organic matter in the marine environment (Tada et al., 2011).

The highly diverse reef sediment community was, on the class level, dominated by Planctomycetes, Bacteroidetes, and Gammaproteobacteria, particularly at the inshore site closest to Makassar. Planctomycetes are common colonizers of marine sediments, and are commonly found in anaerobic, high-nutrient conditions and are effective metabolizers of DOC (Chipman et al., 2010; Lage et al., 2012). For the Spermonde Archipelago this implies a high load of organic matter which is deposited to the sediments, as we observed for the nearshore

areas during our sampling campaign. Some members of the Bacteroidetes and Gammaproteobacteria also have a large array of extracellular hydrolytic enzymes making them an ecologically and biogeochemically important group in the rapid remineralization of organic matter (Azam and Malfatti, 2007; Dang et al., 2009; Edwards et al., 2010). The highest concentrations of chlorophyll *a*, TEP, and SPM at near-shore sites, indicating a high productivity and anthropogenic impact at the site closest to shore, may support the high prevalence especially of Gammaproteobacteria at this site. As a result from high chlorophyll *a* and SPM concentrations, a constant supply of particles rich in organic matter to the sediments may favor fast-growing, heterotrophic bacteria.

Inter-Habitat Variability

Our results suggest that much of the observed variability in bacterial community composition in the Spermonde Archipelago is a result of differences between the sampled habitats. All three habitats, except between the water column and the *Fungia* mucus, showed statistically significant differences in bacterial community composition. Although the two size fractions of the water column were quite similar in the general composition of the most dominant OTU, there were still significant differences in the overall community composition. This is a common observation, also in tropical waters, and often related to differences in food and habitat availability (Zhang et al., 2007; Kellogg and Deming, 2009; Crespo et al., 2013). In case of the Spermonde Archipelago, e.g., *Synechococcus* is almost exclusively found in the particle-attached fraction of the water column.

There is also a frequent exchange between bacterial communities of the water column and the coral mucus, usually controlled by bacteria inhabiting the mucus (Ritchie, 2006). Cell counts in the coral mucus are often 100–1,000 fold higher in the mucus compared to the surrounding seawater, confirming our DAPI cell counts (Rosenberg et al., 2007). Previous studies showed that microbiota associated to a host are often species specific and to a large extent stable across environmental gradients. Barott et al. (2011) showed clear difference in bacterial community composition of different types of algae and corals. Another recent study from the Spermonde Archipelago confirmed this for a variety of reef sponges (Cleary et al., 2015). The production of specific carbohydrates and antibiotics very likely plays an important role in shaping those stable host-specific microbial communities (Ritchie, 2006; Rosenberg et al., 2007). Therefore, bacterial communities from the water column are usually distinct from those inhabiting the mucus (Ritchie and Smith, 2004; Rosenberg et al., 2007), but when that ability of the mucus bacteria fails to select for a host-specific community, e.g., due to anthropogenic stress such as eutrophication or ocean acidification, other opportunistic bacteria might invade available space in the mucus. Therefore, similar bacterial community composition between coral mucus and water-column, as observed as an opportunistic colonization by *Escherichia/Shigella*, *Ralstonia*, and *Mycobacterium* in the present study, can indicate a failure of control mechanisms for mucus colonization due to stress.

Reef sediments are a biogeochemically very different environment compared to habitats exposed to water column. As

observed for the present study, they are also often more diverse than communities from the water column, and the full diversity is rarely assessed (Uthicke and McGuire, 2007; Gaidos et al., 2011). Bacteria inhabiting the sediments provide important functions in the coupling of pelagic and benthic organic matter degradation processes (Gaidos et al., 2011; Schöttner et al., 2011). Due to the high remineralization activity occurring in the sediment-water interface there is usually drop in O_2 and subsequently available electron acceptors after the first few mm (Rasheed et al., 2004). This leads to functionally very different and diverse communities in the different sediment strata (Gaidos et al., 2011), similar to observations made in the Spermonde Archipelago.

CONCLUSIONS

This study contributes the first conclusive overview of changes in bacterial communities from the water column, sediments, and coral mucus in relation to changes in the water quality of the Spermonde Archipelago. There were significant differences between the investigated habitats, namely between the sediments, coral mucus, and the water column as well as between the two size fractions of the water column. The potentially pathogenic bacterial OTUs *Escherichia/Shigella*, *Ralstonia*, and *Mycobacterium* were among the most abundant taxa observed in the water column and coral mucus in this study, while there was no dominant OTU in the sediments. Unfortunately, our identification of potentially pathogenic OTUs was only based on high sequence similarity to known pathogenic strains, and we could not test for actual pathogenicity of these OTUs. Further, tests for the functional traits are required to confirm our assumption. Alarming, the prevalence of many of the observed, potentially pathogenic bacteria was much higher at the chronically impacted sampling sites closer to urban Makassar. If coastal development and waste water management remains unchanged this may have unpredictable consequences for the coastal and island populations that strongly depend on the natural resources taken from the Archipelago.

AUTHOR CONTRIBUTIONS

HK, AG, MT, CW, and ML developed the idea for this project. HK conducted the fieldwork with support from JP and AG and

REFERENCES

- Allers, E., Gómez-Consarnau, L., Pinhasi, J., Gasol, J. M., Simek, K., and Pernthaler, J. (2007). Response of Alteromonadaceae and Rhodobacteriaceae to glucose and phosphorus manipulation in marine mesocosms. *Environ. Microbiol.* 9, 2417–2429. doi: 10.1111/j.1462-2920.2007.01360.x
- Allers, E., Niesner, C., Wild, C., and Pernthaler, J. (2008). Microbes enriched in seawater after addition of coral mucus. *Appl. Environ. Microbiol.* 74, 3274–3278. doi: 10.1128/AEM.01870-07
- Alongi, D. M., Patten, N. L., McKinnon, D., Köstner, N., Bourne, D. G., and Brinkman, R. (2015). Phytoplankton, bacterioplankton and virioplankton structure and function across the southern Great Barrier Reef shelf. *J. Mar. Syst.* 142, 25–39. doi: 10.1016/j.jmarsys.2014.09.010

logistical support from ML. The statistical analysis was conducted by HK, CH, and JP. HK wrote the manuscript with input and critical revision from all co-authors.

FUNDING

This project was part of a Junior Research Group Leader position granted to AG by the Leibniz Association.

ACKNOWLEDGMENTS

We sincerely thank the faculty and technical staff of the Universitas Hasanuddin in Makassar for providing invaluable support, namely Prof. Jamaluddin, Pak Ridwan, Nur Abu. The assistance of conducting analyses at the laboratories at the ZMT in Bremen by Matthias Birkicht and Constanze von Waldhausen is also greatly appreciated. The Indonesian Ministry of Technology, Research and Higher Education (RISTEKDIKTI) kindly provided the necessary research permits.

SUPPLEMENTARY MATERIAL

The Supplementary Material for this article can be found online at: <http://journal.frontiersin.org/article/10.3389/fmicb.2017.00662/full#supplementary-material>

Supplementary Image 1 | Hierarchical clustering, based on Bray-Curtis dissimilarities, of water quality parameters in the different shelf areas.

Supplementary Image 2 | Rarefaction curves for alpha diversity indices (Hill numbers) including observed sequencing depth and extrapolated for twice the sequencing depth per sample using the iNEXT R package.

Number of OTUs ($q = 1$), exponential Shannon diversity index ($q = 1$), inverse Simpson index ($q = 2$). FL, free-living fraction of the water column; PA, particle-attached fraction of the water column; MU, Fungia coral mucus; SE, sediment.

Supplementary Table 1 | Number of 16S sequences generated on the 454 platform per sample (raw), as well as number of sequences after quality filtering and primer removal (QC), and after alignment, chimera removal and taxonomic classification (Classified). OTU numbers are given for the complete data set (nOTU), alpha diversity indices (Hill numbers $q = 0$, $q = 1$, $q = 2$) are provided for the data set rarefied to the same library size (191 sequences). Each sample was rarefied 100 times and Hill numbers represent mean \pm standard error. FL, free-living fraction of the water column; PA, particle-attached fraction of the water column; MU, Fungia coral mucus; SE, sediment. DAPI cell counts are given in cells $ml^{-1} \pm$ standard deviation.

Supplementary Table 2 | Bioinformatic processing of 454 sequences.

- Azam, F., and Malfatti, F. (2007). Microbial structuring of marine ecosystems. *Nat. Rev. Microbiol.* 5, 782–791. doi: 10.1038/nrmicro1747
- Barott, K. L., Rodriguez-Brito, B., Janoušková, J., Marhaver, K. L., Smith, J. E., Keeling, P., et al. (2011). Microbial diversity associated with four functional groups of benthic reef algae and the reef-building coral *Montastraea annularis*. *Environ. Microbiol.* 13, 1192–1204. doi: 10.1111/j.1462-2920.2010.02419.x
- Baudišová, D. (1997). Evaluation of *Escherichia coli* as the main indicator of faecal pollution. *Water Sci. Technol.* 35, 333–336. doi: 10.1016/S0273-1223(97)00281-3
- Becquevort, S., Rousseau, V., and Lancelot, C. (1998). Major and comparable roles for free-living and attached bacteria in the degradation of Phaeocystis-derived organic matter in Belgian coastal waters of the North Sea. *Aquat. Microb. Ecol.* 14, 39–48. doi: 10.3354/ame014039

- Boström, K., Simu, K., Hagström, Å., and Riemann, L. (2004). Optimization of DNA extraction for quantitative marine bacterioplankton community analysis. *Limnol. Oceanogr. Methods* 2, 365–373. doi: 10.4319/lom.2004.2.365
- Bruno, J. F., Petes, L. E., Drew Harvell, C., and Hettinger, A. (2003). Nutrient enrichment can increase the severity of coral diseases. *Ecol. Lett.* 6, 1056–1061. doi: 10.1046/j.1461-0248.2003.00544.x
- Buchan, A., LeCleir, G. R., Gulvik, C. A., and González, J. M. (2014). Master recyclers: features and functions of bacteria associated with phytoplankton blooms. *Nat. Rev. Microbiol.* 12, 686–698. doi: 10.1038/nrmicro3326
- Burke, L., Reyntar, K., Spalding, M., and Perry, A. (2011). *Reefs at Risk Revisited*. Washington, DC: World Resources Institute.
- Cárdenas, A., Meyer, F., Schwieder, H., Wild, C., and Gärdes, A. (2015). The formation of aggregates in coral reef waters under elevated concentrations of dissolved inorganic and organic carbon: a mesocosm approach. *Mar. Chem.* 175, 47–55. doi: 10.1016/j.marchem.2015.04.002
- Chipman, L., Podgorski, D., Green, S., Kostka, J., Cooper, W., and Huettel, M. (2010). Decomposition of plankton derived dissolved organic matter in permeable coastal sediments. *Limnol. Oceanogr.* 55, 857–871. doi: 10.4319/lo.2009.55.2.0857
- Chao, A., Gotelli, N. J., Hsieh, T. C., Sander, E. L., Ma, K. H., Colwell, R. K., et al. (2014). Rarefaction and extrapolation with Hill numbers: a framework for sampling and estimation in species diversity studies. *Ecol. Monogr.* 84, 45–67. doi: 10.1890/13-0133.1
- Clarke, K., and Gorley, R. (2006). *PRIMER v6: User Manual/Tutorial*. Plymouth: PRIMER-E.
- Cleary, D. F. R., Becking, L. E., de Voogd, N. J., Renema, W., de Beer, M., van Soest, R. W. M., et al. (2005). Variation in the diversity and composition of benthic taxa as a function of distance offshore, depth and exposure in the Spermonde Archipelago, Indonesia. *Estuar. Coast. Shelf Sci.* 65, 557–570. doi: 10.1016/j.ecss.2005.06.025
- Cleary, D. F. R., de Voogd, N. J., Polónia, A. R. M., Freitas, R., and Gomes, N. C. M. (2015). Composition and predictive functional analysis of bacterial communities in seawater, sediment and sponges in the spermonde archipelago, indonesia. *Microb. Ecol.* 70, 889–903. doi: 10.1007/s00248-015-0632-5
- Crespo, B. G., Pommier, T., Fernández-Gómez, B., and Pedrós-Alió, C. (2013). Taxonomic composition of the particle-attached and free-living bacterial assemblages in the Northwest Mediterranean Sea analyzed by pyrosequencing of the 16S rRNA. *Microbiologyopen* 2, 541–552. doi: 10.1002/mbo3.92
- Dang, H., Zhu, H., Wang, J., and Li, T. (2009). Extracellular hydrolytic enzyme screening of culturable heterotrophic bacteria from deep-sea sediments of the Southern Okinawa Trough. *World J. Microbiol. Biotechnol.* 25, 71–79. doi: 10.1007/s11274-008-9865-5
- Delesalle, B., and Sournia, A. (1992). Residence time of water and phytoplankton biomass in coral reef lagoons. *Cont. Shelf Res.* 12, 939–949. doi: 10.1016/0278-4343(92)90053-M
- de Voogd, N. J., Cleary, D. F. R., Polonia, A. R. M., and Gomes, N. C. M. (2015). Bacterial community composition and predicted functional ecology of sponges, sediment and seawater from the thousand-islands reef complex, West-Java, Indonesia. *FEMS Microbiol. Ecol.* 91, 1–12. doi: 10.1093/femsec/fiv019
- Dinsdale, E. A., Pantos, O., Smriga, S., Edwards, R. A., Angly, F., Wegley, L., et al. (2008). Microbial ecology of four coral atolls in the Northern Line Islands. *PLoS ONE* 3:e1584. doi: 10.1371/journal.pone.0001584
- Edberg, S. C., Rice, E. W., Karlin, R. J., and Allen, M. J. (2000). *Escherichia coli*: the best biological drinking water indicator for public health protection. *Symp. Ser. Soc. Appl. Microbiol.* 29, 106S–116S. doi: 10.1111/j.1365-2672.2000.tb05338.x
- Edinger, E. N., Jompa, J., Limmon, G. V., Widjatmoko, W., and Risk, M. J. (1998). Reef degradation and coral biodiversity in Indonesia: effects of land-based pollution, destructive fishing practices and changes over time. *Mar. Pollut. Bull.* 36, 617–630. doi: 10.1016/S0025-326X(98)00047-2
- Edwards, J. L., Smith, D. L., Connolly, J., McDonald, J. E., Cox, M. J., Joint, I., et al. (2010). Identification of carbohydrate metabolism genes in the metagenome of a marine biofilm community shown to be dominated by Gammaproteobacteria and Bacteroidetes. *Genes (Basel)*. 1, 371–384. doi: 10.3390/genes1030371
- Engel, A. (2009). “Determination of marine gel particles,” in *Practical Guidelines for the Analysis of Seawater*, ed O. Wurl (Boca Raton, FL: CRC Press), 125–140.
- Fabricius, K. (2011). “Nutrient pollution/eutrophication,” in *Encyclopedia of Modern Coral Reefs Encyclopedia of Earth Sciences Series*, ed D. Hopley (Dordrecht: Springer Netherlands), 722–731.
- Fabricius, K. E. (2005). Effects of terrestrial runoff on the ecology of corals and coral reefs: review and synthesis. *Mar. Pollut. Bull.* 50, 125–146. doi: 10.1016/j.marpolbul.2004.11.028
- Ferrier-Pagès, C., Gattuso, J. P., Cauwet, G., Jaubert, J., and Allemand, D. (1998). Release of dissolved organic carbon and nitrogen by the zooxanthellate coral *Galaxea fascicularis*. *Mar. Ecol. Prog. Ser.* 172, 265–274. doi: 10.3354/meps172265
- Ferse, S. C. A., Knittweis, L., Krause, G., Maddusila, A., and Glaser, M. (2012). Livelihoods of Ornamental Coral Fishermen in South Sulawesi/Indonesia: implications for management. *Coast. Manag.* 40, 525–555. doi: 10.1080/08920753.2012.694801
- Fichez, R., Chifflet, S., Douillet, P., Gérard, P., Gutierrez, F., Jouon, A., et al. (2010). Biogeochemical typology and temporal variability of lagoon waters in a coral reef ecosystem subject to terrigenous and anthropogenic inputs (New Caledonia). *Mar. Pollut. Bull.* 61, 309–322. doi: 10.1016/j.marpolbul.2010.06.021
- Gaidos, E., Rusch, A., and Ilardo, M. (2011). Ribosomal tag pyrosequencing of DNA and RNA from benthic coral reef microbiota: community spatial structure, rare members and nitrogen-cycling guilds. *Environ. Microbiol.* 13, 1138–1152. doi: 10.1111/j.1462-2920.2010.02392.x
- Gärdes, A., Iversen, M. H., Grossart, H.-P., Passow, U., and Ullrich, M. S. (2011). Diatom-associated bacteria are required for aggregation of *Thalassiosira weissflogii*. *ISME J.* 5, 436–445. doi: 10.1038/ismej.2010.145
- Glaser, M., Baitoningsih, W., Ferse, S. C. A., Neil, M., and Deswandi, R. (2010). Whose sustainability? Top-down participation and emergent rules in marine protected area management in Indonesia. *Mar. Policy* 34, 1215–1225. doi: 10.1016/j.marpol.2010.04.006
- Gordon, A. L., Susanto, R. D., Ffield, A., Huber, B. A., Pranowo, W., and Wirasantosa, S. (2008). Makassar Strait throughflow, 2004 to 2006. *Geophys. Res. Lett.* 35, 3–7. doi: 10.1029/2008GL036372
- Gordon, A. L., Susanto, R. D., and Vranes, K. (2003). Cool Indonesian throughflow as a consequence of restricted surface layer flow. *Nature* 425, 21–25. doi: 10.1038/nature02038
- Hewson, I., Vargo, G. A., and Fuhrman, J. A. (2003). Bacterial diversity in shallow oligotrophic marine benthos and overlying waters: effects of virus infection, containment, and nutrient enrichment. *Microb. Ecol.* 46, 322–336. doi: 10.1007/s00248-002-1067-3
- Howarth, R., Chan, F., Conley, D. J., Garnier, J., Doney, S. C., Marino, R., et al. (2011). Coupled biogeochemical cycles: eutrophication and hypoxia in temperate estuaries and coastal marine ecosystems. *Front. Ecol. Environ.* 9, 18–26. doi: 10.1890/100008
- Jacobs, J., Rhodes, M., Sturgis, B., and Wood, B. (2009). Influence of environmental gradients on the abundance and distribution of *Mycobacterium* spp. in a coastal lagoon estuary. *Appl. Environ. Microbiol.* 75, 7378–7384. doi: 10.1128/AEM.01900-09
- Kellogg, C. T. E., and Deming, J. W. (2009). Comparison of free-living, suspended particle, and aggregate-associated bacterial and archaeal communities in the Laptev Sea. *Aquat. Microb. Ecol.* 57, 1–18. doi: 10.3354/ame01317
- Kjørboe, T., and Tang, K. (2003). Dynamics of microbial communities on marine snow aggregates: colonization, growth, detachment, and grazing mortality of attached bacteria. *Appl. Environ. Microbiol.* 69, 3036–3047. doi: 10.1128/AEM.69.6.3036-3047.2003
- Kooperman, N., Ben-Dov, E., Kramarsky-Winter, E., Barak, Z., and Kushmaro, A. (2007). Coral mucus-associated bacterial communities from natural and aquarium environments. *FEMS Microbiol. Lett.* 276, 106–113. doi: 10.1111/j.1574-6968.2007.00921.x
- Koren, O., and Rosenberg, E. (2006). Bacteria associated with mucus and tissues of the coral *Oculina patagonica* in summer and winter. *Appl. Environ. Microbiol.* 72, 5254–5259. doi: 10.1128/AEM.00554-06
- Kramer, A. M., Lyons, M. M., Dobbs, F. C., and Drake, J. M. (2013). Bacterial colonization and extinction on marine aggregates: stochastic model of species presence and abundance. *Ecol. Evol.* 3, 4300–4309. doi: 10.1002/ece3.789
- Lage, O. M., Bondoso, J., and Viana, F. (2012). Isolation and characterization of Planctomycetes from the sediments of a fish farm wastewater treatment tank. *Arch. Microbiol.* 194, 879–885. doi: 10.1007/s00203-012-0821-2
- Lau, S. C. K., Zhang, R., Brodie, E. L., Piceno, Y. M., Andersen, G., and Liu, W. T. (2013). Biogeography of bacterioplankton in the tropical seawaters

- of Singapore. *FEMS Microbiol. Ecol.* 84, 259–269. doi: 10.1111/1574-6941.12057
- Lyons, M. M., Ward, J. E., Gaff, H., Hicks, R. E., Drake, J. M., and Dobbs, F. C. (2010). Theory of island biogeography on a microscopic scale: organic aggregates as islands for aquatic pathogens. *Aquat. Microb. Ecol.* 60, 1–13. doi: 10.3354/ame01417
- Martin, M. (2011). Cutadapt removes adapter sequences from high-throughput sequencing reads. *EMBnet. J.* 17, 10–12. doi: 10.14806/ej.17.1.1200
- Meyer-Reil, L.-A., and Köster, M. (2000). Eutrophication of marine waters: effects on benthic microbial communities. *Mar. Pollut. Bull.* 41, 255–263. doi: 10.1016/S0025-326X(00)00114-4
- Moll, H. (1983). *Zonation and Diversity of Scleractinia on Reefs off S.W. Sulawesi, Indonesia*. Oudenbosch: Offsetdrukkerij Kanters B.V.
- Nelson, C. E., Alldredge, A. L., McCliment, E. A., Amaral-Zettler, L. A., and Carlson, C. A. (2011). Depleted dissolved organic carbon and distinct bacterial communities in the water column of a rapid-flushing coral reef ecosystem. *ISME J.* 5, 1374–1387. doi: 10.1038/ismej.2011.12
- Odonkor, S. T., and Ampofo, J. K. (2013). *Escherichia coli* as an indicator of bacteriological quality of water: an overview. *Microbiol. Res. (Pavia)*. 4, 5–11. doi: 10.4081/mr.2013.e2
- Oksanen, J., Blanchet, F. G., Friendly, M., Kindt, R., Legendre, P., McGlinn, D., et al. (2016). *Vegan: Community Ecology Package*. Available online at: <http://cran.r-project.org/package=vegan>
- Ong, S. H., Kukkillaya, V. U., Wilm, A., Lay, C., Ho, E. X. P., Low, L., et al. (2013). Species identification and profiling of complex microbial communities using shotgun Illumina sequencing of 16S rRNA amplicon sequences. *PLoS ONE* 8:e60811. doi: 10.1371/journal.pone.0060811
- Paerl, H. W., Hall, N. S., Peierls, B. L., and Rossignol, K. L. (2014). Evolving paradigms and challenges in Estuarine and Coastal Eutrophication dynamics in a culturally and climatically stressed world. *Estuaries Coasts* 37, 243–258. doi: 10.1007/s12237-014-9773-x
- Passow, U. (2000). Formation of transparent exopolymer particles, TEP, from dissolved precursor material. *Mar. Ecol. Prog. Ser.* 192, 1–11. doi: 10.3354/meps192001
- Passow, U. (2002). Transparent exopolymer particles (TEP) in aquatic environments. *Prog. Oceanogr.* 55, 287–333. doi: 10.1016/S0079-6611(02)00138-6
- Passow, U., and Alldredge, A. L. (1994). Distribution, size and bacterial colonization of transparent exopolymer particles (TEP) in the ocean. *Mar. Ecol. Prog. Ser.* 113, 185–198. doi: 10.3354/meps113185
- Passow, U., and Alldredge, A. L. (1995). A dye-binding assay for the spectrophotometric measurement of transparent exopolymer particles (TEP). *Limnol. Ocean.* 40, 1326–1335. doi: 10.4319/lo.1995.40.7.1326
- Pet-Soede, C., Van Densen, W. L. T., Hiddink, J. G., Kuyl, S., and Machiels, M. A. M. (2001). Can fishermen allocate their fishing effort in space and time on the basis of their catch rates? An example from Spermonde Archipelago, SW Sulawesi, Indonesia. *Fish. Manag. Ecol.* 8, 15–36. doi: 10.1046/j.1365-2400.2001.00215.x
- Rasheed, M., Wild, C., Franke, U., and Huettel, M. (2004). Benthic photosynthesis and oxygen consumption in permeable carbonate sediments at Heron Island, Great Barrier Reef, Australia. *Estuar. Coast. Shelf Sci.* 59, 139–150. doi: 10.1016/j.ecss.2003.08.013
- R Core Team (2015). *R: A Language and Environment for Statistical Computing*. Available online at: <https://www.r-project.org/>
- Renema, W., and Troelstra, S. R. (2001). Larger foraminifera distribution on a mesotrophic carbonate shelf in SW Sulawesi (Indonesia). *Palaeogeogr. Palaeoclimatol. Palaeoecol.* 175, 125–146. doi: 10.1016/S0031-0182(01)00389-3
- Ritchie, K. (2006). Regulation of microbial populations by coral surface mucus and mucus-associated bacteria. *Mar. Ecol. Prog. Ser.* 322, 1–14. doi: 10.3354/meps322001
- Ritchie, K. B., and Smith, G. W. (2004). “Microbial communities of coral surface mucopolysaccharide layers,” in *Coral Health and Disease*, eds E. Rosenberg and Y. Loya (Berlin; Heidelberg: Springer), 259–264. doi: 10.1007/978-3-662-06414-6_13
- Rosenberg, E., Koren, O., Reshef, L., Efrony, R., and Zilber-Rosenberg, I. (2007). The role of microorganisms in coral health, disease and evolution. *Nat. Rev. Microbiol.* 5, 355–362. doi: 10.1038/nrmicro1635
- Roy, S., Hens, D., Biswas, D., Biswas, D., and Kumar, R. (2002). Survey of petroleum-degrading bacteria in coastal waters of Sunderban Biosphere Reserve. *World J. Microbiol. Biotechnol.* 18, 575–581. doi: 10.1023/A:1016362819746
- Sawall, Y., Richter, C., and Ramette, A. (2012). Effects of eutrophication, seasonality and macrofouling on the diversity of bacterial biofilms in equatorial coral reefs. *PLoS ONE* 7:e39951. doi: 10.1371/journal.pone.0039951
- Sawall, Y., Teichberg, M. C., Seemann, J., Litaay, M., Jompa, J., and Richter, C. (2011). Nutritional status and metabolism of the coral *Stylophora subseriata* along a eutrophication gradient in Spermonde Archipelago (Indonesia). *Coral Reefs* 30, 841–853. doi: 10.1007/s00338-011-0764-0
- Schloss, P. D., Westcott, S. L., Ryabin, T., Hall, J. R., Hartmann, M., Hollister, E. B., et al. (2009). Introducing mothur: open-source, platform-independent, community-supported software for describing and comparing microbial communities. *Appl. Environ. Microbiol.* 75, 7537–7541. doi: 10.1128/AEM.01541-09
- Schöttner, S., Pfitzner, B., Grünke, S., Rasheed, M., Wild, C., and Ramette, A. (2011). Drivers of bacterial diversity dynamics in permeable carbonate and silicate coral reef sands from the Red Sea. *Environ. Microbiol.* 13, 1815–1826. doi: 10.1111/j.1462-2920.2011.02494.x
- Smith, D. C., Steward, G. F., Long, R. A., and Azam, F. (1995). Bacterial mediation of carbon fluxes during a diatom bloom in a mesocosm. *Deep Sea Res. Part II Top. Stud. Oceanogr.* 42, 75–97. doi: 10.1016/0967-0645(95)00005-B
- Tada, Y., Taniguchi, A., Nagao, I., Miki, T., Uematsu, M., Tsuda, A., et al. (2011). Differing growth responses of major phylogenetic groups of marine bacteria to natural phytoplankton blooms in the Western North Pacific Ocean. *Appl. Environ. Microbiol.* 77, 4055–4065. doi: 10.1128/AEM.02952-10
- Taylor, J. D., Cottingham, S. D., Billinge, J., and Cunliffe, M. (2014). Seasonal microbial community dynamics correlate with phytoplankton-derived polysaccharides in surface coastal waters. *ISME J.* 8, 245–248. doi: 10.1038/ismej.2013.178
- Teira, E., Gasol, J. M., Aranguren-Gassis, M., Fernández, A., González, J., Lekunberri, I., et al. (2008). Linkages between bacterioplankton community composition, heterotrophic carbon cycling and environmental conditions in a highly dynamic coastal ecosystem. *Environ. Microbiol.* 10, 906–917. doi: 10.1111/j.1462-2920.2007.01509.x
- Tout, J., Jeffries, T. C., Webster, N. S., Stocker, R., Ralph, P. J., and Seymour, J. R. (2014). Variability in microbial community composition and function between different niches within a coral reef. *Microb. Ecol.* 67, 540–552. doi: 10.1007/s00248-013-0362-5
- Uthicke, S., and McGuire, K. (2007). Bacterial communities in great barrier reef calcareous sediments: contrasting 16S rDNA libraries from nearshore and outer shelf reefs. *Estuar. Coast. Shelf Sci.* 72, 188–200. doi: 10.1016/j.ecss.2006.10.017
- Verdugo, P., Alldredge, A. L., Azam, F., Kirchman, D. L., Passow, U., and Santschi, P. H. (2004). The oceanic gel phase: a bridge in the DOM–POM continuum. *Mar. Chem.* 92, 67–85. doi: 10.1016/j.marchem.2004.06.017
- Verdugo, P., and Santschi, P. H. (2010). Polymer dynamics of DOC networks and gel formation in seawater. *Deep Sea Res. II Top. Stud. Oceanogr.* 57, 1486–1493. doi: 10.1016/j.dsr2.2010.03.002
- Weinbauer, M. G., Kerros, M. E., Motegi, C., Wilhartz, I. C., Rassoulzadegan, F., Torretón, J. P., et al. (2010). Bacterial community composition and potential controlling mechanisms along a trophic gradient in a barrier reef system. *Aquat. Microb. Ecol.* 60, 15–28. doi: 10.3354/ame01411
- West, N. J., Lepère, C., Manes, C. L., Catala, P., Scanlan, D. J., and Lebaron, P. (2016). Distinct spatial patterns of SAR11, SAR86, and Actinobacteria diversity along a transect in the ultra-oligotrophic South Pacific Ocean. *Front. Microbiol.* 7:234. doi: 10.3389/fmicb.2016.00234
- Wild, C., Huettel, M., Klueter, A., and Kremb, S. G. (2004). Coral mucus functions as an energy carrier and particle trap in the reef ecosystem. *Nature* 428, 66–70. doi: 10.1038/nature02344
- Williams, S. L., Janetski, N., Abbott, J., Blankenhorn, S., Cheng, B., Crafton, R. E., et al. (2014). Ornamental marine species culture in the coral triangle: seahorse demonstration project in the Spermonde Islands, Sulawesi. *Indonesia. Environ. Manage.* 54, 1342–1355. doi: 10.1007/s00267-014-0343-6
- Witt, V., Wild, C., and Uthicke, S. (2012). Terrestrial runoff controls the bacterial community composition of biofilms along a water quality gradient in the Great Barrier Reef. *Appl. Environ. Microbiol.* 78, 7786–7791. doi: 10.1128/AEM.01623-12

- Yoshpe-Purer, Y., and Golderman, S. (1987). Occurrence of *Staphylococcus aureus* and *Pseudomonas aeruginosa* in Israeli coastal water. *Appl. Environ. Microbiol.* 53, 1138–1141.
- Zhang, R., Lau, S. C. K., Ki, J.-S., Thiyagarajan, V., and Qian, P.-Y. (2009). Response of bacterioplankton community structures to hydrological conditions and anthropogenic pollution in contrasting subtropical environments. *FEMS Microbiol. Ecol.* 69, 449–460. doi: 10.1111/j.1574-6941.2009.00726.x
- Zhang, R., Liu, B., Lau, S. C. K., Ki, J.-S., and Qian, P.-Y. (2007). Particle-attached and free-living bacterial communities in a contrasting marine environment: Victoria Harbor, Hong Kong. *FEMS Microbiol. Ecol.* 61, 496–508. doi: 10.1111/j.1574-6941.2007.00353.x

Conflict of Interest Statement: The authors declare that the research was conducted in the absence of any commercial or financial relationships that could be construed as a potential conflict of interest.

Copyright © 2017 Kegler, Lukman, Teichberg, Plass-Johnson, Hassenrück, Wild and Gärdes. This is an open-access article distributed under the terms of the Creative Commons Attribution License (CC BY). The use, distribution or reproduction in other forums is permitted, provided the original author(s) or licensor are credited and that the original publication in this journal is cited, in accordance with accepted academic practice. No use, distribution or reproduction is permitted which does not comply with these terms.