





Cite this: *Phys. Chem. Chem. Phys.*,  
2018, 20, 6936

# Lysine-based amino-functionalized lipids for gene transfection: the influence of the chain composition on 2D properties†

Stephanie Tassler,<sup>a</sup> Dorota Pawlowska,<sup>a</sup> Christopher Janich,<sup>b</sup> Bodo Dobner,<sup>b</sup> Christian Wölk <sup>b</sup> and Gerald Brezesinski <sup>\*a</sup>

The influence of the chain composition on the physical–chemical properties will be discussed for five transfection lipids containing the same lysine-based head group. For this purpose, the chain composition will be gradually varied from saturated tetradecyl (C<sub>14:0</sub>) and hexadecyl (C<sub>16:0</sub>) chains to longer but unsaturated oleyl (C<sub>18:1</sub>) chains with double bonds in the *cis* configuration. In this work, we investigated the lipids as Langmuir monolayers at the air–water–interface in the absence and presence of calf thymus DNA applying different techniques such as infrared reflection absorption spectroscopy (IRRAS) and grazing incidence X-ray diffraction (GIXD). The replacement of saturated tetradecyl (C<sub>14:0</sub>) and hexadecyl (C<sub>16:0</sub>) chains by unsaturated oleyl (C<sub>18:1</sub>) chains increases the fluidity of the lipid monolayer: **TH10** < **TT10** < **OH10** < **OT10** < **OO10** resulting in a smaller packing density. **TH10** forms the stiffest and **OO10** the most fluid monolayer in this structure–property study. **OO10** has a higher protonation degree compared to the saturated lipids **TT10** and **TH10** as well as to the hybrids **OT10** and **OH10** because of a better accessibility of the amine groups. Depending on the bulk pH, different scenarios of DNA coupling to the lipid monolayers have been proposed.

Received 3rd January 2018,  
Accepted 2nd February 2018

DOI: 10.1039/c8cp00047f

rs.c.li/pccp

## 1. Introduction

Gene therapy is a promising tool to cure monogenetic diseases like cystic fibrosis and sickle-cell anemia.<sup>1,2</sup> Gene therapy stands for the insertion of missing or the replacement of defect genes by healthy ones.<sup>2</sup> Current definitions also include the application of siRNA (gene silencing) or the gene editing strategy (CRISPR-Cas9).<sup>3,4</sup> These concepts require efficient delivery of polynucleotides into biological tissue or cells – the so called gene transfection.<sup>5</sup> Due to nuclease degradation it is impossible for pure DNA/RNA to penetrate the cell membrane without physical methods like needle injection or gene gun, therefore, specific carriers are needed. Their main challenges are to transport the DNA through the bloodstream, to cross cell membranes and to efficiently release the genetic material near by the cell nucleus. Particularly, viral vector systems reach a higher efficiency than physical methods and non-viral transfer vehicles since they were evolved with the express purpose of infecting mammalian cells with foreign genetic materials. Despite their high transfection efficiency, viral systems have

also disadvantages: retroviral systems have an oncogenic potential and all viral systems can cause immune responses to a greater or lesser extent.<sup>6</sup> An alternative approach is the non-viral gene transfer, which is realised by non-viral vectors like cationic lipids. They are anyway easier and cheaper to produce and can be much better controlled.<sup>7</sup>

Besides structural parameters such as the head group, the spacer and the backbone, the chain composition is crucial for the formation of liposomes and lipoplexes, and finally for the cellular uptake. The structure of the hydrophobic domain determines the phase transition temperature and the fluidity of the bilayer, further it influences the stability of liposomes, the DNA protection from nucleases, the endosomal escape, the DNA release from the lipoplex and the nuclear penetration. Especially the number and the length of aliphatic chains play a crucial role. While single-chain lipids tend to form micelles, they transfect poorly compared to their double- and triple-chain derivatives.<sup>8,9</sup> Furthermore, the length of the aliphatic chain is important and determines, together with the size of the head group and the nature of the backbone and spacer, the overall molecule shape. There are many different opinions in the literature considering the minimum chain lengths, which is required for gene transfection (C<sub>10</sub>,<sup>10</sup> C<sub>12</sub><sup>11,12</sup> or C<sub>14</sub><sup>13</sup>). Aliphatic chains varying from C<sub>5</sub> to C<sub>25</sub> have been investigated, with the conclusion that the transfection efficiency is not a linear function

<sup>a</sup> Max Planck Institute of Colloids and Interfaces, Science Park Potsdam-Golm, Am Mühlenberg 1, 14476 Potsdam, Germany. E-mail: brezesinski@mpikg.mpg.de

<sup>b</sup> Martin-Luther-University (MLU) Halle-Wittenberg, Institute of Pharmacy, Wolfgang-Langenbeck-Straße 4, 06120 Halle (Saale), Germany

† Electronic supplementary information (ESI) available. See DOI: 10.1039/c8cp00047f



of the length. A few groups are convinced that  $C_{14}$  is the best choice for efficient transfection, but obviously not for all lipid composites.<sup>12–14</sup> For gemini lipids  $C_{18}$  turned out to be a suitable chain length.<sup>15,16</sup> Further, the toxicity of lipids is influenced by the hydrophobic domain.<sup>17</sup> Generally, it was found that the cytotoxicity increases with decreasing chain length. Shorter-chain lipids have lower phase transition temperatures, which prohibits them from developing stable liposomes.<sup>13,18</sup> In contrast, lipids with longer aliphatic chains increase the rigidity of bilayers, which is necessary to form stable liposomes.<sup>11</sup> In the liquid-crystalline state, longer saturated chains can be very flexible (*gauche* conformation) due to rotational freedom of each single bond.<sup>19</sup> However, under physiological conditions they are usually in the gel state with chain segments in all-*trans* conformation. Except a few authors,<sup>20,21</sup> most groups report that unsaturated  $C_{18:1}$  chains are frequently the best choice for good transfection.<sup>22–25</sup> Oleyl chains can promote the endosomal escape due to the enhancement of membrane fluidity of the transfection complexes.<sup>10</sup> Furthermore, they allow strong anchoring in the membrane and have a good miscibility with unsaturated helper lipids like DOPC and DOPE.<sup>26</sup>

The effect of asymmetry is another variable influencing the transfection efficiency of cationic lipids. There are two possibilities to introduce asymmetry. One way is to choose a helper lipid with a chain length different from the cationic lipid or to introduce a mismatch in the cationic lipid itself by using different chains. For the first scenario it was found that a high level of asymmetry ( $C_{18:1}$  cationic lipid,  $C_{12:0}$  helper lipid) as well as high symmetry ( $C_{16:0}$  cationic lipid,  $C_{16:0}$  helper lipid) results in high transfection rates.<sup>27</sup> In the case of the asymmetry being based on a mismatch within the cationic lipid itself, no clear trend was described in the literature. Some research groups claim that asymmetry enhances the transfection efficiency<sup>28–30</sup> but a few groups report contrary findings.<sup>31,32</sup> Our research goal is to correlate the structure of malonic acid diamide lipids with the physical-chemical properties and the interaction with DNA. Such data can be used for future correlations with the biological activity.<sup>33</sup> To enable a systematic study, lipids with different chain patterns have been synthesized,<sup>34–36</sup> namely TT ( $C_{14:0}$ ,  $C_{14:0}$ ), TH ( $C_{14:0}$ ,  $C_{16:0}$ ), OT ( $C_{18:1}$ ,  $C_{14:0}$ ), OH ( $C_{18:1}$ ,  $C_{16:0}$ ) and OO ( $C_{18:1}$ ,  $C_{18:1}$ ). In this paper, the physical-chemical properties of lipids with the head group type **10** (see Fig. 1) and the above described alkyl chain patterns have been examined in 2D model systems (Langmuir monolayers). The focus is set on the lipid self-assembling as well as the complex formation with DNA. Consequently, this article gives information on how to adjust physical-chemical parameters of transfection lipids by variation of the alkyl chain patterns to influence the coupling of DNA.

## 2. Materials

### 2.1. Experimental details

For the monolayer experiments, 1 mM stock solutions of **TT10**, **TH10**, **OT10**, **OH10** and **OO10** were prepared in chloroform:methanol (8:2 v:v) ( $\text{CHCl}_3$ : J. T. Baker, Netherlands; stabilized with 0.75% of ethanol;  $\text{CH}_3\text{OH}$ : Merck, Germany; purity > 99.9%).

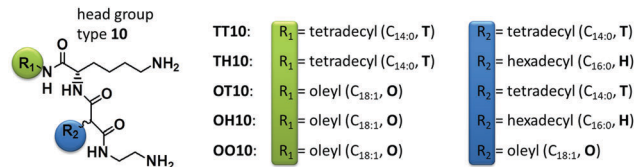


Fig. 1 Chemical structures of *N*-(2-aminoethyl)-*N'*-[6-amino-1-oxo-1-[(*N*-tetradecylamino)hexan-(2*S*)-2-yl]]-2-tetradecylpropandiamid **TT10**, *N*-(2-aminoethyl)-*N'*-[6-amino-1-oxo-1-(*N*-tetradecylamino)hexan-(2*S*)-2-yl]-2-hexadecylpropandiamid **TH10**, *N*-(2-aminoethyl)-*N'*-[6-amino-1-[(*N*-(9*Z*)-octadec-9-enylamino]-1-oxohexan-(2*S*)-2-yl]-2-tetradecylpropandiamid **OT10**, *N*-(2-aminoethyl)-*N'*-[6-amino-1-[(*N*-(9*Z*)-octadec-9-enylamino]-1-oxohexan-(2*S*)-2-yl]-2-hexadecylpropandiamid **OH10** and *N*-(2-aminoethyl)-*N'*-[6-amino-1-[(*N*-(9*Z*)-octadec-9-enylamino]-1-oxohexan-(2*S*)-2-yl]-2-[(9*Z*)-octadec-9-enyl]propandiamid **OO10**.

The synthesis and the analytical data of **TT10**, **TH10**, **OT10** and **OH10**<sup>35</sup> as well as **OO10**<sup>37</sup> have already been described.

The lipids containing an oleyl chain have been synthesized from oleylamine with technical grade.<sup>38</sup>

Milli-Q Millipore water with a specific resistance of 18.2 MΩ cm was taken for all measurements and sample preparations. All chemicals used for the preparation of the bromide ion based buffers were purchased from Sigma Aldrich. The buffer had a constant concentration of 2 mM bromide anions. The pH 3 was adjusted by taking 1,4-diazabicyclo(2,2,2)octane ( $\text{p}K_{\text{a}1} = 4.2$ ,  $\text{p}K_{\text{a}2} = 8.2$ ), and pH 10 was obtained by using piperazine ( $\text{p}K_{\text{a}1} = 5.7$ ,  $\text{p}K_{\text{a}2} = 9.8$ ). The deoxyribonucleic acid sodium salt from calf thymus was purchased from Sigma Aldrich (Type 1, CAS: 73049-39-5). A stock solution of 1 mM ct-DNA was prepared freshly in 1 mM NaCl solution by gently stirring in the fridge (5 °C) overnight. The molar mass of DNA refers to a monomer containing one charge per phosphate moiety with 10% of hydration, therefore,  $M \sim 370 \text{ g mol}^{-1}$ .<sup>39</sup> The DNA solutions were diluted with water or the corresponding bromide ion based buffer to a concentration of 0.1 mM directly before the experiments.

### 2.2. Structural properties

**TT10**, **TH10**, **OT10**, **OH10** and **OO10** are lysine-based amino-functionalised peptide-mimicking lipids, which were synthesised as non-viral carriers for gene transfection (Fig. 1). The hydrophobic lipid domain changes gradually from short and saturated tetradecyl ( $\text{T} = C_{14:0}$ ) to longer saturated hexadecyl ( $\text{H} = C_{16:0}$ ) and finally to unsaturated oleyl ( $\text{O} = C_{18:1}$ ) chains.

The oleyl chain was introduced for two reasons. First, because it is known for a high transfection efficiency, and second, it ensures a sufficient miscibility with the commonly used helper lipid DOPE.

The malonic acid/lysine backbone of **TT10**, **TH10**, **OT10**, **OH10** and **OO10** is biocompatible and ensures low cytotoxicity resulting in a low immune response. Due to this backbone, the lipids exhibit a peptide-like character. Head group **10** has a linear ethylene diamine spacer and two primary amine groups (Fig. 1). The  $\text{p}K_{\text{a}}$  value increases from 5 to 5.6 for **TH10** to **OO10**, respectively, indicating that their readiness to act as proton donors decreases with increasing chain fluidity.<sup>37</sup> This can also influence the interaction with DNA.



### 3. Methods

#### 3.1. Langmuir film balance

The lipid monolayers were examined on a computer-interfaced Langmuir trough equipped with a Wilhelmy balance to measure the surface tension with an accuracy of  $\pm 0.1 \text{ mN m}^{-1}$ . A connected thermostat was kept at  $20 \text{ }^\circ\text{C}$  with a precision of  $\pm 0.1 \text{ }^\circ\text{C}$ . The lipid monolayers were compressed using a moveable barrier with a velocity of  $5 \text{ } \text{\AA}^2 (\text{molecule min})^{-1}$  to a surface pressure below  $45 \text{ mN m}^{-1}$  to avoid the layer collapse. Afterwards, the lipid monolayers were expanded with the same velocity to record the hysteresis. Compression and expansion isotherms are very similar for all lipids investigated. The  $1 \text{ mM}$  lipid solution was spread carefully from a micro-syringe (Hamilton, Switzerland) onto the aqueous subphases. Before compression,  $10 \text{ min}$  were given for the evaporation of the organic solvent. In the case of DNA adsorbing to the lipid monolayer,  $60 \text{ min}$  were given. All isotherms were measured at least twice for reproducibility.

#### 3.2. Infrared reflection absorption spectroscopy

The infrared reflection absorption spectra were collected on a Vertex 70 FT-IR spectrometer (Bruker Optics, Ettlingen, Germany). The set-up includes a film balance (R&K, Potsdam, Germany) located inside an enclosed container (external air-water-reflection unit XA-511, Bruker). A sample trough with two movable barriers and a reference trough (only water or buffer) allow the fast recording of the sample and reference spectra using a shuttle technique. The infrared beam is focused on the liquid surface by a set of mirrors. The IR-beam angle of incidence ( $\phi$ ) normal to the surface has been adjusted to be  $40^\circ$  moveable arms. A KRS-5 wire grid polarizer is used to polarize the infrared radiation either in the parallel (p) or perpendicular (s) direction. After reflection from the surface, the beam is directed to a narrow band Mercury Cadmium Telluride (MCT) detector cooled with liquid nitrogen. The final reflectance-absorbance spectra were obtained using  $-\log(R/R_0)$ , with  $R$  being the reflectance of the film covered surface and  $R_0$  being the reflectance of the pure subphase. For each single beam spectrum 200 scans (s-polarized light) or 400 scans (p-polarized light) were added with a scanning velocity of  $20 \text{ kHz}$  and a resolution of  $8 \text{ cm}^{-1}$ , apodized using the Blackman-Harris 3-term function, and fast Fourier transformed after one level of zero filling.<sup>40–42</sup> All spectra were corrected for atmospheric interference using the OPUS software and baseline corrected applying the spectra-subtraction software. The spectra are not smoothed.<sup>43</sup> The Lorentzian fit maximum of the antisymmetric  $\text{CH}_2$ -band ( $\pm 0.2 \text{ cm}^{-1}$ ) was taken to determine the lipid phase state, while the intensity of the antisymmetric  $\text{PO}_2^-$  band was used to estimate the amount of DNA coupled to the monolayers of **TH10** and **OO10**.

#### 3.3. Grazing incidence X-ray diffraction

The grazing incidence X-ray diffraction patterns were recorded using the liquid surface diffractometer at the undulator beam-line BW1 in the HASYLAB (DESY, Hamburg, Germany).<sup>44</sup> A Langmuir film microbalance (R&K, Potsdam, Germany) with a glass block inside in order to dampen the mechanically excited

surface wave was set on an anti-vibration table. The trough is in an air-tight container with a Kapton (polyimide film) window and under a helium atmosphere. A connected thermostat was kept at constant temperature during the measurements. To avoid radiation damage on the sample, the trough was laterally moved so that the strong X-ray beam ( $9 \text{ keV}$ ) hits different sample spots. A beryllium (002) crystal is used as a monochromator to obtain an X-ray beam with a wavelength of  $1.304 \text{ \AA}$ . To gain maximal surface sensitivity the incident angle of the synchrotron beam is adjusted to  $0.1^\circ$  (85% of the critical angle  $\alpha_c$ ) in order to reach total external reflection. The reflected beam travels as an evanescent wave along the interface and decays exponentially in the medium. The experimental details are described elsewhere.<sup>45–49</sup>

### 4. Results and discussion

The cationic lipids **TT10**, **TH10**, **OT10**, **OH10** and **OO10** have been investigated as lipid monolayers on different subphases in the absence and presence of calf thymus DNA at  $20 \text{ }^\circ\text{C}$ .

#### 4.1. 2D phase behaviour of pure lipids

**$\pi$ -A-isotherms.** The primary amines of the cationic lipids are protonated at pH 3. Therefore, the strongest electrostatic repulsions and the largest molecular areas are observed. Upon compression only **TH10** undergoes a conformational change from the liquid-expanded to the liquid-condensed phase state because of strong van der Waals interactions between the saturated chains (Fig. S1A, ESI<sup>†</sup>). The corresponding unsaturated derivatives **OH10** and **OO10** remain in the LE phase state, but the hybrid **OH10** requires a smaller molecular area than **OO10** with two oleyl chains (Fig. S1A, ESI<sup>†</sup>).

The  $\pi$ -A-isotherm of the **TT10**, **TH10**, **OT10**, **OH10** and **OO10** Langmuir monolayers on water at  $20 \text{ }^\circ\text{C}$  are presented in Fig. 2A. Water saturated with  $\text{CO}_2$  has a pH value of approximately 5.8, therefore, the lipids are less charged than on the pH 3 buffer and exhibit weaker electrostatic repulsions. Hence, they have lower LE-LC transition pressures. The saturated lipids **TT10** and **TH10** are in the liquid-condensed phase state already at close to zero pressures (re-sublimation). Their  $\pi$ -A-isotherms are almost identical. The hybrid **OH10** is in the LC phase as well, but the molecular area of **OH10** is larger compared with **TT10** and **TH10**. **OT10** and **OO10** are in the liquid-expanded phase state, but **OT10** seems to be in a coexistence between LE and LC of  $5 \text{ mN m}^{-1}$  and  $40 \text{ mN m}^{-1}$ . **OO10** has the largest molecular area and is in the LE state.

On the pH 10 buffer (Fig. S1B, ESI<sup>†</sup>), the lipids are completely unprotonated. Only **OO10** is in the LE phase state, while the saturated **TH10** and the hybrid **OH10** are in the LC phase state. Because of the saturated tetradecyl chain **TH10** achieves a tighter packing and occupies a less area than the oleyl chain containing **OH10**.

**Phase state.** Further, the phase state of **TT10**, **TH10**, **OT10**, **OH10** and **OO10** has been examined by IRRAS on water at  $20 \text{ }^\circ\text{C}$  (Fig. 2B). Selected IRRAS-spectra can be found in the ESI<sup>†</sup>



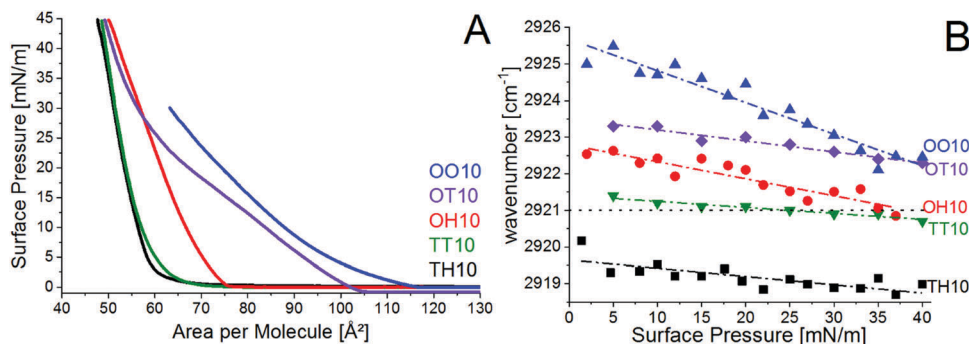


Fig. 2 (A)  $\pi$ -A isotherms of **TH10** (black), **TT10** (green), **OH10** (red), **OT10** (violet) and **OO10** (blue) Langmuir monolayers on water (pH 5.8) at 20 °C, and (B) wavenumber of the asymmetric methylene stretching vibration determined by IRRAS of **TH10** (black squares), **TT10** (green triangles down), **OH10** (red dots), **OT10** (violet diamonds) and **OO10** (blue triangles up) on water (pH 5.8) at 20 °C. Dashed-dotted lines are linear fits. The dotted line marks the threshold wavenumber of the LC phase state.

(Fig. S2). The phase behaviour of the five lipids drastically depends on the chain composition. The longer saturated chains of lipid **TH10** lead to the smallest wavenumbers, indicating that most of the alkyl chain segments are in all-*trans* conformation. As already observed in the corresponding  $\pi$ -A-isotherm, **TH10** is in the liquid-condensed phase state at all pressures. **TT10** has only two  $\text{CH}_2$  groups less than **TH10**, but the wavenumbers increase by about  $2 \text{ cm}^{-1}$ . Due to slightly shorter chains the van der Waals interactions are not as strong as for **TH10**. Thus more chain segments are in the *gauche* conformation. Furthermore, the replacement of the tetradecyl chain ( $\text{C}_{14:0}$ ) by an oleyl chain ( $\text{C}_{18:1}$ ) for **TH10**  $\rightarrow$  **OH10** causes again an increase in wavenumbers. **OH10** is more fluid than **TT10** due to the double bond in the oleyl chain. The exchange of the hexadecyl ( $\text{C}_{16:0}$ ) chain by the shorter tetradecyl ( $\text{C}_{14:0}$ ) chain (**OH10**  $\rightarrow$  **OT10**) results in a further increase in wavenumbers. **OT10** has a greater chain mismatch and is therefore more fluid than **OH10**. Further replacement of the tetradecyl chain ( $\text{C}_{14:0}$ ) by a second oleyl chain ( $\text{C}_{18:1}$ ) (**OT10**  $\rightarrow$  **OO10**) leads to even higher wavenumbers. **OO10** has chains in the *gauche* conformation. With ongoing compression the wavenumbers of **OO10** slightly decrease, but the lipid remains in the liquid-expanded phase state. The results fit to the obtained  $\pi$ -A-isotherms. **TH10** forms the stiffest and **OO10** the most fluid monolayer in this study. As expected, the fluidity increases with shorter chains and double bonds **TH10** < **TT10** < **OH10** < **OT10** < **OO10**.

#### 4.2. 2D structure of pure lipids

Additionally, GIXD has been performed using **TT10**, **TH10** and **OH10** monolayers spread on water at 20 °C and  $30 \text{ mN m}^{-1}$  (Fig. 3A-C) and **OT10** at 5 °C and  $30 \text{ mN m}^{-1}$  (Fig. 3D).  $30 \text{ mN m}^{-1}$  is the assumed lateral pressure in a cell membrane.<sup>50</sup> Since **OO10** is in the LE phase state with chains in the *gauche* conformation, the GIXD method was not applied. Fluid chains do not order and cause only a diffuse scattering, which results in a broad halo.

For the lipid **TT10**, three Bragg peaks can be correlated with an oblique chain lattice, namely  $Q_{xy} = 1.19 \text{ \AA}^{-1}$ ,  $Q_{xy} = 1.34 \text{ \AA}^{-1}$  and  $Q_{xy} = 1.53 \text{ \AA}^{-1}$ . The reflections could be indexed as (1,0), (0,1) and (1,-1). Since their  $Q_z$  values are in the ratio  $Q_z^2 = Q_x^2 + Q_y^2$ , an oblique unit cell with a distortion equal to 0.29 has been

determined. Very similar Bragg peaks were found for **TH10** and **OH10** as well, namely  $Q_{xy} = 1.2 \text{ \AA}^{-1}$ ,  $Q_{xy} = 1.36 \text{ \AA}^{-1}$  and  $Q_{xy} = 1.53 \text{ \AA}^{-1}$ , and  $Q_{xy} = 1.19 \text{ \AA}^{-1}$ ,  $Q_{xy} = 1.39 \text{ \AA}^{-1}$  and  $Q_{xy} = 1.53 \text{ \AA}^{-1}$ , respectively. But since the signal intensity for **OH10** is very low, it was not possible to determine the corresponding  $Q_z$  values. We can only assume an oblique unit cell, because the three peaks found are at very similar positions compared with **TT10** and **TH10**.

Compared to **TT10**, **TH10** has two extra  $\text{CH}_2$  groups resulting in slightly stronger van der Waals interactions. As discussed before, **TH10** forms a stiffer monolayer due to a tighter molecular packing. Therefore, the lattice parameters of **TH10** ( $t = 35.3^\circ$ ,  $A_0 = 20.6 \text{ \AA}^2$ ,  $A_{xy} = 25.3 \text{ \AA}^2$ , and distortion  $d = 0.28$ ) are a bit smaller than for **TT10** ( $t = 38.5^\circ$ ,  $A_0 = 21 \text{ \AA}^2$ ,  $A_{xy} = 25.7 \text{ \AA}^2$  and  $d = 0.29$ ).

**TT10** and **TH10** have a high tilt angle, which can be explained by the large area requirement of the head group. In order to compensate the large head group areas the chains are strongly tilted. Subsequently, the cross-sectional areas per chain are a bit higher than the typical values for free rotating chains ( $A_0 \sim 20 \text{ \AA}^2$ ), because these strongly tilted chains are less tightly packed (see also the increased wavenumbers of  $\text{CH}_2$  stretching vibrations of **TT10** (Fig. 2B)). The in-plane area  $A_{xy}$ , which describes the real in-plane area occupied by one chain at the surface, is consistent with the area per molecule of the corresponding  $\pi$ -A-isotherms (Fig. 2A).

The GIXD pattern of **OT10** reveals several Bragg peaks. The three Bragg peaks at  $Q_{xy} = 1.19 \text{ \AA}^{-1}$ ,  $Q_{xy} = 1.39 \text{ \AA}^{-1}$  and  $Q_{xy} = 1.52 \text{ \AA}^{-1}$  can be associated with an oblique chain structure, but, as for **OH10**, the signal intensity was too low for the determination of the corresponding Bragg rods.

Besides the Bragg peaks assigned to the chain lattice, there are additional Bragg peaks in the diffraction pattern of **TT10**, **TH10**, **OH10** and **OT10** indicating further 2D alignments. The Bragg peak at  $Q_{xy} = 1.61 \text{ \AA}^{-1}$  gives a real spacing distance of  $3.9 \text{ \AA}$ , which is a typical value for the distance between the  $\text{C}_\alpha$  carbons in a  $\beta$ -sheet structure. These transfection lipids contain a lysine moiety in the head group, which results in a peptide-mimic character. Therefore, this peak can be indexed as  $\text{C}_\alpha$ - $\text{C}_\alpha$  spacing. The hypothesis is supported by the Bragg peaks found at  $Q_{xy} = 1.31 \text{ \AA}^{-1}$ , indicating intermolecular





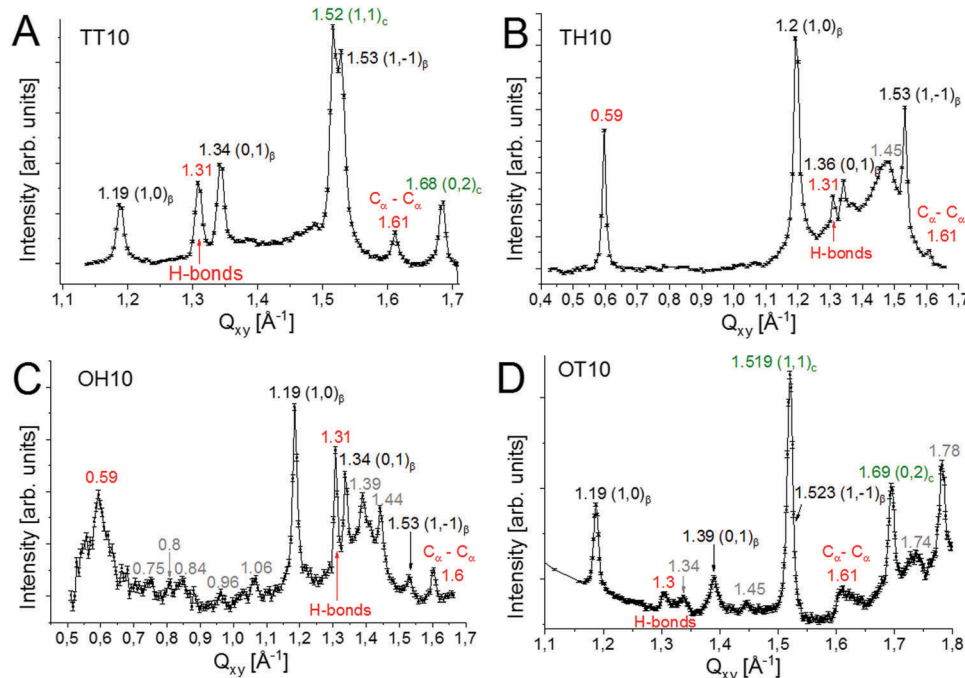


Fig. 3 Bragg peaks as a function of the in-plane scattering vector component  $Q_{xy}$  [ $\text{\AA}^{-1}$ ] of (A) **TT10**, (B) **TH10** and (C) **OH10** at  $30 \text{ mN m}^{-1}$  spread on water at  $20^\circ \text{C}$  and (D) **OT10** at  $30 \text{ mN m}^{-1}$  on water (pH 5.8) at  $5^\circ \text{C}$ . The Bragg peaks corresponding to the oblique chain lattice are indexed in black. The  $\beta$ -sheet like structure is given in red. The crystalline peaks are marked in green and the sub-gel phase is indexed in grey.

hydrogen bonds.  $Q_{xy} = 1.31 \text{ \AA}^{-1}$  gives a real spacing distance of  $4.8 \text{ \AA}$ , which is a typical value for strand separation in  $\beta$ -sheets due to their hydrogen bonds (strand-NH $\cdots$ O=C-opposite strand). **TT10**, **TH10**, **OH10** and **OT10** have a high ability to form intra- and intermolecular hydrogen bonds between the primary amine and carbonyl groups. Since the intramolecular hydrogen bonds and the hydrogen bonds with water molecules from the subphase are not ordered, they do not cause Bragg peaks. Consequently, the observed Bragg peaks in the GIXD pattern are associated with intermolecular hydrogen bonds between different **TT10**, **TH10**, **OH10** and **OT10** molecules, respectively. The Bragg peak at  $Q_{xy} = 0.59 \text{ \AA}^{-1}$  ( $d = 10.6 \text{ \AA}$ ) indicates ordering of the head groups.

The same two Bragg peaks, namely  $Q_{xy} = 1.31 \text{ \AA}^{-1}$  and  $Q_{xy} = 1.61 \text{ \AA}^{-1}$ , have been found for lipid 7, which is a representative of the first generation of our malonic acid amide lipids,<sup>51,52</sup> but the low  $Q_{xy}$  range was not investigated for lipid 7. Therefore, the lattices could be very similar.

Moreover, in the GIXD pattern of **TT10** and **OT10** two Bragg peaks at  $Q_{xy} = 1.52 \text{ \AA}^{-1}$  (degenerated peak) and  $Q_{xy} = 1.68 \text{ \AA}^{-1}$  (non-degenerated peak) have been observed. The Bragg rods have a FWHM of  $0.17 \text{ \AA}^{-1}$ . By using the Scherrer formula,  $L_z = 0.88 \left( \frac{2\pi}{\text{FWHM}} \right)$  to calculate the length of the scattering unit, one obtains  $L_z$  equal to  $32.5 \text{ \AA}$ , which is too large for a lipid molecule. It might be that the lipids **TT10** and **OT10** were not completely dissolved in the solution (chloroform/methanol 3 : 1). In this case, lipid microcrystals could be present at the surface. The crystals are most probably made of lipid layers and double layers. Since no Scherrer rings or any bending of contour plots are visible,

the signals have to come from oriented crystals that give a spot-like signal rather than from a powder-like structure where the Scherrer rings are expected. Probably only the in-plane cross-section of the double layer can be seen so no 3D structures contribute to the signal. The presence of crystals is the most reasonable explanation. The two Bragg peaks are indicative of a rectangular unit cell. Both peaks are located at the horizon characterizing a lattice of non-tilted chains.  $L_z = 32.5 \text{ \AA}$  corresponds to interdigitated chains of two layers. The packing in such interdigitated layers is very tight ( $A_0 \sim 18.5 \text{ \AA}^2$ ) and corresponds to the herringbone chain packing mode.

Besides the indexed Bragg peaks there are other peaks in the GIXD patterns of **TH10**, **OH10** and **OT10**, which are marked in grey (Fig. 3B–D). Similar peaks were found for a highly ordered head group structure of a sugar-unit containing the phospholipid GPI-fragment, namely GlcN $\alpha$ 1-6myoIno-1-phosphodistearyl-glycerol.<sup>53,54</sup> The chains were strongly tilted ( $43^\circ$ ). In the present case of the transfection lipids, the observed Bragg peaks could also indicate a sub-gel phase,<sup>55–57</sup> which is formed by the ordering of whole molecules instead of only chains. However, the signal intensity is very weak compared to the other Bragg peaks. Most likely, the van der Waals interactions cannot be optimized due to the large spacing between the head groups ordered by a hydrogen bonding network.

#### 4.3. Adsorption of calf thymus DNA to **TH10** and **OO10** monolayers

Since the investigated lipids are designed for gene transfection, they were also examined on calf thymus DNA containing buffers using a Langmuir film balance combined with the



IRRAS technique. The adsorption behaviour of DNA will be discussed depending on the pH value and the chain composition for the two extreme cases, namely **TH10** and **OO10**. **TH10** forms the stiffest and **OO10** the most fluid monolayer of the investigated transfection lipids.

**Adsorption isotherms.** The adsorption of ct-DNA to **TH10** and **OO10** monolayers has been measured at pH 3, pH 7 and pH 10 (see ESI† Fig. S7). Since DNA is a polyelectrolyte, its protonation state strongly depends on the pH value. At physiological pH 7.4, DNA is negatively charged due to the phosphate backbone ( $\text{PO}_2^-$ ). In contrast, the cationic lipids are barely protonated at pH 7. In the case of **TH10**, only 12% of the lipids have one positively charged amine group, while for **OO10** only 49% of the lipids have one protonated amine group.<sup>37</sup> At pH 10, the lipids are completely unprotonated, while DNA is close to strand separation. At lower pH values, the charge ratio is reversed. DNA is weakly charged at pH 3, but the lipids are almost fully protonated (see the ESI† Fig. S5).

The resulting increase in the surface pressure ( $\Delta\pi = \pi_{60\text{min}} - \pi_{\text{initial}}$ ) due to the adsorption of ct-DNA after 60 min is given in Table 1. The initial pressure was in all cases  $\sim 8 \text{ mN m}^{-1}$ .

The protonation state of DNA and the cationic lipids explain the strong increase of the surface pressure at pH 7. The negatively charged DNA is attracted by the weakly protonated cationic lipids due to electrostatic interactions between the phosphate diester backbone ( $\text{PO}_2^-$ ) of DNA and the amine groups ( $\text{R-NH}_3^+$ ) in the lipid head group. The adsorbed DNA requires a large area. Even at pH 10, at which the cationic lipids

are unprotonated, a large amount of negatively charged DNA is attracted to the interface and occupies space, which results in an increasing surface pressure for both **TH10** and **OO10**. Almost no increase in the surface pressure is detected for the **TH10** and **OO10** monolayers at pH 3 (Table 1). The monolayers of protonated **TH10** and **OO10** are not influenced by the presence of weakly charged DNA.

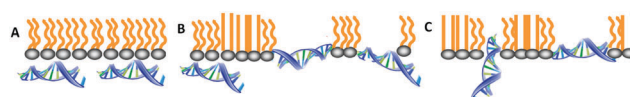
**Phase state.** The phase states of **TH10** and **OO10** have been determined in the absence of ct-DNA and after the adsorption of ct-DNA to the lipid monolayers at pH 3, pH 7 and pH 10 in order to determine the influence of adsorbed DNA on the lipid phase state. The obtained results are depicted in Fig. 4. Selected IRRAS-spectra can be found in the ESI† (Fig. S9).

As expected, the unsaturated lipid **OO10** is more fluid than the saturated derivative **TH10**. DNA has a fluidising effect on the saturated lipid **TH10** at pH 3 and pH 7. At pH 10, the monolayer remains in the LC phase state with chains in all-*trans* conformation. Surprisingly, the wavenumbers even decrease in the presence of DNA. It seems like adsorbing and penetrating DNA compresses the **TH10** monolayer leading to a tighter packing (Fig. 5C).

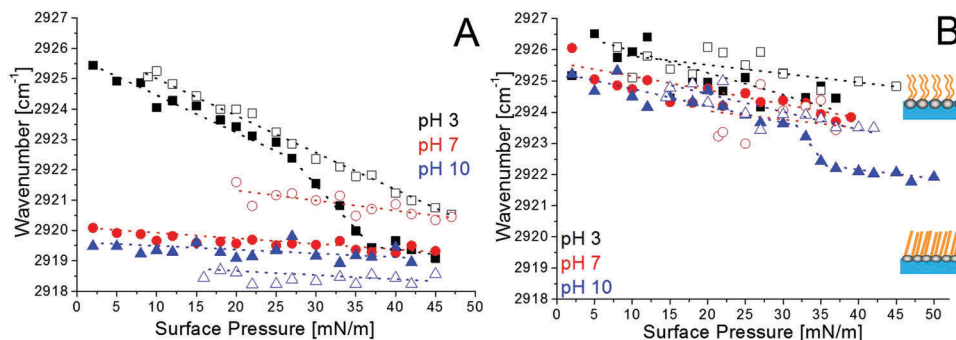
At pH 7, the wavenumbers are intermediate, which either means that some chain segments are in the *gauche* conformation whereas other chain segments remain in the all-*trans* conformation, or that there are patches of lipids in LE and LC states as suggested in Fig. 5B. The idea of coexisting LE and LC phases is supported by the strong increase in the surface pressure as shown in the adsorption isotherms ( $\Delta\pi_{\text{TH10}} = 11.3 \text{ mN m}^{-1}$  and  $\Delta\pi_{\text{OO10}} = 12.2 \text{ mN m}^{-1}$ ). Comparing the wavenumbers for **OO10** between 20 and 25  $\text{mN m}^{-1}$  (Fig. 4B), it seems that **OO10** is more fluid without the DNA than with the DNA adsorbed. This implies that

**Table 1** Increase in surface pressure ( $\Delta\pi$ ) due to calf thymus DNA adsorption to **TH10** and **OO10** monolayers on buffers with different pH values at 20 °C

ct-DNA containing bromide ion based buffer	$\Delta\pi$ [ $\text{mN m}^{-1}$ ] of <b>TH10</b> monolayer	$\Delta\pi$ [ $\text{mN m}^{-1}$ ] of <b>OO10</b> monolayer
pH 3	0.4	0
pH 7	11.3	12.2
pH 10	8	6.4



**Fig. 5** Possible scenarios of DNA adsorption to the lipid monolayers at different pH values. (A) pH 3, (B) pH 7 and (C) pH 10.



**Fig. 4** (A) Wavenumber of the asymmetric methylene stretching vibrations determined by IRRAS of **TH10** at 20 °C on the pH 3 buffer (black), pH 7 (red) and pH 10 (blue) shown as filled symbols on pure buffer and as open symbols on calf thymus DNA containing buffers, and (B) wavenumber of the symmetric methylene stretching vibrations determined by IRRAS of **OO10** at 20 °C on the pH 3 (black), pH 7 (red) and pH 10 (blue) bromide ion based buffers shown as filled symbols on pure buffer and as open symbols on calf thymus DNA containing buffers. The maxima of the Lorentzian fit to the antisymmetric  $\text{CH}_2$  stretching vibrations are plotted vs. the surface pressure. Dotted lines are for guiding the eyes only.



DNA penetrates the monolayer and compresses the lipids, which results in lower wavenumbers. Upon further compressing by the barriers, the penetrated DNA seems to be squeezed out at  $27 \text{ mN m}^{-1}$ , because the wavenumbers increase by about  $2 \text{ cm}^{-1}$ .

At pH 3, both monolayers are in the LE phase state at low surface pressures, but upon compression **TH10** undergoes a transition to the LC state. The adsorbed DNA changes the wavenumbers only marginally. Since the increase in the surface pressure observed in the adsorption isotherms for **TH10** and **OO10** at pH 3 is also negligible, it might be that DNA does not penetrate and influence the lipid monolayers. More likely, the DNA is coordinated by the protonated head groups underneath the monolayer (Fig. 5A). In order to get deeper insights into the interaction between ct-DNA and the cationic lipids, the amount of attached DNA has been estimated.

**DNA quantification.** The relative amount of attached calf thymus DNA to the lipid monolayers of **TH10** and **OO10** on the bromide ion based buffers at pH 3, pH 7 and pH 10 has been determined by the integration of the antisymmetric  $\text{PO}_2^-$  stretching vibration band ( $1220 \text{ cm}^{-1}$  to  $1260 \text{ cm}^{-1}$ ) after subtraction of the spectra of DNA solutions at the corresponding pH values.

The intensity plots of the  $\nu_{\text{asym}} \text{PO}_2^-$  band versus the area per molecule of the corresponding lipids are given in Fig. 6 for **TH10** and **OO10**. Here, the increase in chain unsaturation results in a higher amount of DNA attached to the lipid monolayer. The smaller packing density of the **OO10** monolayer assists the adsorption of DNA at pH 3 and pH 7. On DNA containing pH 10 buffer, the performance of both lipids is very weak. The relative amount of attached DNA is negligible. Upon compression, the little amount of adsorbed DNA is squeezed out from the monolayer, indicating weak electrostatic interactions. Further, the shift of the  $\nu_{\text{asym}} \text{PO}_2^-$  band to higher wavenumbers ( $1260 \text{ cm}^{-1}$ ) indicates dehydration of the DNA phosphate diester groups and the absence of hydrogen bonds (see ESI,† Fig. S8). On DNA containing pH 3 and pH 7 buffers, the  $\nu_{\text{asym}} \text{PO}_2^-$  band is at  $1220 \text{ cm}^{-1}$  which implies stronger hydration of the DNA phosphate groups and the presence of hydrogen bonds. Interestingly, the slope of the linear fit differs

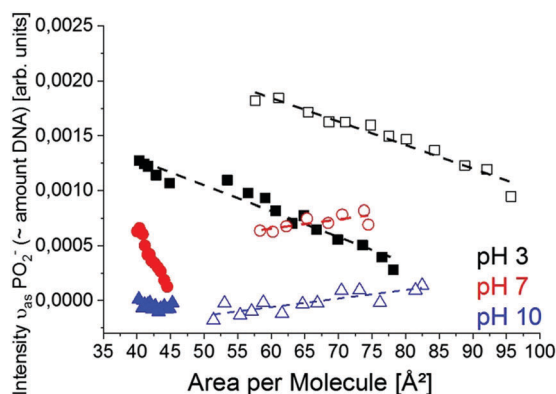


Fig. 6 The relative amount of DNA attached to **TH10** (filled symbols) and **OO10** (open symbols) monolayers on calf thymus DNA containing pH 3 (black squares), pH 7 (red dots) and pH 10 (blue triangles) buffers at  $20^\circ \text{C}$ . Integral intensity of antisymmetric  $\text{PO}_2^-$  stretching vibrations vs. molecular area. Dashed lines are linear fits.

dramatically for **TH10** and **OO10** on the DNA containing pH 7 buffer. With further compression the intensity of the phosphate band for **TH10** strongly increases, while it slightly decreases for **OO10**. Here it looks like DNA is squeezed out from the **OO10** monolayer as already assumed in the discussion regarding the phase state. For **TH10** and **OO10**, a small amount of attached DNA introduces further adsorption of DNA to the lipid monolayer (Manning condensation<sup>58</sup>). The negatively charged polyelectrolyte would only go to the interfaces, if the interaction with the interfaces is more attractive than the interactions between the polyelectrolyte and subphase. The adsorption of DNA to the lipid monolayer is a competition between an attractive surface potential and the entropic repulsion, which keeps the polyelectrolyte in the subphase. The electrostatic interactions depend on the charge density of DNA and the lipids,<sup>59</sup> the salt concentration<sup>60</sup> and the pH value.<sup>61</sup> In case a DNA chain segment adsorbs at the charged monolayer, the system loses translation energy equal to the thermic energy ( $k_{\text{B}}T$ , where  $k_{\text{B}}$  is the Boltzmann constant and  $T$  the temperature), but increases the entropy due to the released counter ions ( $Zk_{\text{B}}T$ , where  $Z$  is the charge of the counter ion). As a result, the surface charge decreases and subsequently an equilibrium of adsorption and desorption will be established. For polyelectrolytes this phenomenon is described as the Manning condensation.<sup>58</sup> A weakly charged monolayer at the interface will attract only a small amount of DNA inducing further attraction of DNA to the interface. Additionally, the adsorbed DNA affects the potential of the electrical double layer in the way that the surface pH changes in accordance with the Boltzmann equation. This leads to an increase in the protonation degree of the **TH10** and **OO10** monolayers and consequently to further binding of DNA chain segments.<sup>62</sup> This explains why there is still a large amount of DNA attached to **TH10** and **OO10** at pH 7, where their protonation degrees are rather small.

Despite the higher protonation degree of **OO10**, the charge densities of **TH10** and **OO10** are comparable at  $30 \text{ mN m}^{-1}$  on the bromide ion based buffer at pH 3.<sup>37</sup> Both lipids are in the same phase state (liquid-expanded), but **TH10** is closer to the phase transition to the liquid-condensed phase state ( $\pi_{\text{tr}} = 35 \text{ mN m}^{-1}$ , ESI,† Fig. S1). Therefore, the **TH10** monolayer is already better ordered than the **OO10** monolayer. This order seems to disturb the interactions with DNA in the case of **TH10**, while the flexibility of the fluid **OO10** monolayer benefits the interaction with DNA. More DNA is attached to the **OO10** monolayer at pH 3 (Fig. 6).

## 5. Conclusion

In this work, the influence of the chain composition on the physical-chemical properties of five lipids, designed for non-viral gene transfection, was investigated in 2D model layers. These lipids possess the same head group. The replacement of saturated tetradecyl ( $\text{C}_{14:0}$ ) and hexadecyl ( $\text{C}_{16:0}$ ) chains by unsaturated oleyl ( $\text{C}_{18:1}$ ) chains increases the fluidity of the lipid monolayer resulting in a smaller packing density. The exchange of a short tetradecyl ( $\text{C}_{14:0}$ ) chain by a longer hexadecyl ( $\text{C}_{16:0}$ ) chain enhances the van der Waals interactions and leads to a more



rigid monolayer. **TH10** forms the stiffest and **OO10** the most fluid monolayer in this structure–property study. The fluidity increases with shorter chains and double bonds **TH10** < **TT10** < **OH10** < **OT10** < **OO10**. Since the unsaturated **OO10** occupies larger molecular areas, a better accessibility of the amine groups is given, resulting in a higher protonation degree compared to the saturated lipids **TT10** and **TH10** as well as to the hybrids **OT10** and **OH10**. Different scenarios of DNA coupling to the lipid monolayers have been proposed for different bulk pH values. In a forthcoming study, the properties of these lipids as well as of lipoplexes will be examined in bulk and compared with transfection experiments.

## Abbreviations

<b>Arb. units</b>	Arbitrary units
<b><math>\pi</math>-A-isotherm</b>	Surface pressure–area-isotherm
<b>ct-DNA</b>	Calf thymus deoxyribonucleic acid
<b>DOPE</b>	1,2-Dioleoyl- <i>sn</i> -glycero-3-phosphoethanolamine
<b>GIXD</b>	Grazing incidence X-ray diffraction
<b>IRRAS</b>	Infrared reflection absorption spectroscopy
<b>LC</b>	Liquid-condensed phase with chains in all- <i>trans</i> conformation
<b>LE</b>	Liquid-expanded phase state with chains in <i>gauche</i> conformation
<b>OH10</b>	<i>N</i> -(2-Aminoethyl)- <i>N'</i> -[6-amino-1-[ <i>N</i> -(9 <i>Z</i> )-octadec-9-enylamino]-1-oxohexan-(2 <i>S</i> )-2-yl]-2-hexadecylpropandiamide
<b>OO10</b>	<i>N</i> -(2-Aminoethyl)- <i>N'</i> -[6-amino-1-[ <i>N</i> -(9 <i>Z</i> )-octadec-9-enylamino]-1-oxohexan-(2 <i>S</i> )-2-yl]-2-[(9 <i>Z</i> )-octadec-9-enyl]propandiamide
<b>OT10</b>	<i>N</i> -(2-Aminoethyl)- <i>N'</i> -[6-amino-1-[ <i>N</i> -(9 <i>Z</i> )-octadec-9-enylamino]-1-oxohexan-(2 <i>S</i> )-2-yl]-2-tetradecylpropandiamide
<b>TH10</b>	<i>N</i> -(2-Aminoethyl)- <i>N'</i> -[6-amino-1-oxo-1-( <i>N</i> -tetradecylamino)hexan-(2 <i>S</i> )-2-yl]-2-hexadecylpropandiamide
<b>TT10</b>	<i>N</i> -(2-Aminoethyl)- <i>N'</i> -[6-amino-1-oxo-1-[( <i>N</i> -tetradecylamino)hexan-(2 <i>S</i> )-2-yl]]-2-tetradecylpropandiamid
<b>TRXF</b>	Total reflection X-ray fluorescence

## Conflicts of interest

There are no conflicts of interest to declare.

## Acknowledgements

This work was supported by the Max Planck Society. We thank DESY for beamtime and support. Open Access funding provided by the Max Planck Society.

## Notes and references

1 T. Friedman and R. Roblin, *Science*, 1972, **175**, 949–955.

- T. P. O'Connor and R. G. Crystal, *Nat. Rev. Genet.*, 2006, **7**, 261–276.
- B. L. Davidson and P. B. McCray (Jr), *Nat. Rev. Genet.*, 2011, **12**, 329–340.
- M. L. Maeder and C. A. Gersbach, *Mol. Ther.*, 2016, **24**, 430–446.
- R. Mulligan, *Science*, 1993, **260**, 926–932.
- R. G. Crystal, *Science*, 1995, **270**, 404–410.
- I. MacLachlan, P. Cullis and R. W. Graham, *Curr. Opin. Mol. Ther.*, 1999, **1**, 252–259.
- F. H. Cameron, M. J. Moghaddam, V. J. Bender, R. G. Whittaker, M. Mott and T. J. Lockett, *Biochim. Biophys. Acta, Biomembr.*, 1999, **1417**, 37–50.
- P. Pinnaduwage, L. Schmitt and L. Huang, *Biochim. Biophys. Acta*, 1989, **985**, 33–37.
- Z. Hyvönen, M. Ruponen, S. Rönkkö, P. Suhonen and A. Urtili, *Eur. J. Pharm. Sci.*, 2002, **15**, 449–460.
- R. P. Balasubramaniam, M. J. Bennett, A. M. Aberle, J. G. Malone, M. H. Nantz and R. W. Malone, *Gene Ther.*, 1996, **3**, 163–172.
- A. E. Regelin, S. Fankhaenel, L. Gurtesch, C. Prinz, G. von Kiedrowski and U. Massing, *Biochim. Biophys. Acta, Biomembr.*, 2000, **1464**, 151–164.
- G. V. Srilakshmi, J. Sen, A. Chaudhuri, Y. Ramadas and N. M. Rao, *Biochim. Biophys. Acta, Biomembr.*, 2002, **1559**, 87–95.
- R. Koynova and B. Tenchov, *Curr. Pharm. Biotechnol.*, 2014, **15**, 806–813.
- C. McGregor, C. Perrin, M. Monck, P. Camilleri and A. J. Kirby, *J. Am. Chem. Soc.*, 2001, **123**, 6215–6220.
- M. Damen, E. Cristóbal-Lecina, G. C. Sanmartí, S. F. M. van Dongen, C. L. G. Rodríguez, I. P. Dolbnya, R. J. M. Nolte and M. C. Feiters, *Soft Matter*, 2014, **10**, 5702–5714.
- D. Niculescu-Duvaz, J. Heyes and C. J. Springer, *Curr. Med. Chem.*, 2003, **10**, 1233–1261.
- G. Byk, C. Dubertret, V. Escriou, M. Frederic, G. Jaslin, R. Rangara, B. Pitard, J. Crouzet, P. Wils, B. Schwartz and D. Scherman, *J. Med. Chem.*, 1998, **41**, 224–235.
- M. J. Ruocco and G. G. Shipley, *Biochim. Biophys. Acta*, 1982, **691**, 309–320.
- A. Roosjen, J. Smisterova, C. Driessen, J. T. Anders, A. Wagenaar, D. Hoekstra, R. Hulst and J. Engberts, *Eur. J. Org. Chem.*, 2002, 1271–1277.
- M. Castro, D. Griffiths, A. Patel, N. Patrick, C. Kitson and M. Ladlow, *Org. Biomol. Chem.*, 2004, **2**, 2814–2820.
- M. Dittrich, M. Heinze, C. Wölk, S. S. Funari, B. Dobner, H. Möhwald and G. Brezesinski, *ChemPhysChem*, 2011, **12**, 2328–2337.
- I. Van der Woude, A. Wagenaar, A. A. P. Meekel, M. B. A. TerBeest, M. H. J. Ruiters, J. Engberts and D. Hoekstra, *Proc. Natl. Acad. Sci. U. S. A.*, 1997, **94**, 1160–1165.
- S. Loisel, V. Floch, C. Le Gall and C. Ferec, *J. Liposome Res.*, 2001, **11**, 127–138.
- M. L. Fielden, C. Perrin, A. Kremer, M. Bergsma, M. C. Stuart, P. Camilleri and J. Engberts, *Eur. J. Biochem.*, 2001, **268**, 1269–1279.
- A. Ahmad, H. M. Evans, K. Ewert, C. X. George, C. E. Samuel and C. R. Safinya, *J. Gene Med.*, 2005, **7**, 739–748.





- 27 M. E. Ferrari, D. Rusalov, J. Enas and C. J. Wheeler, *Nucleic Acids Res.*, 2002, **30**, 1808–1816.
- 28 J. A. Heyes, D. Niculescu-Duvaz, R. G. Cooper and C. J. Springer, *J. Med. Chem.*, 2002, **45**, 99–114.
- 29 M. H. Nantz, C. W. Dicus, B. Hilliard, S. Yellayi, S. Zou and J. G. Hecker, *Mol. Pharmaceutics*, 2010, **7**, 786–794.
- 30 P. V. Dileep, A. Antony and S. Bhattacharya, *FEBS Lett.*, 2001, **509**, 327–331.
- 31 S. Obika, T. Uneda, T. Sugimoto, D. Nanbu, T. Minami, T. Doi and T. Imanishi, *Bioorg. Med. Chem.*, 2001, **9**, 1001–1011.
- 32 G. Byk, B. Wetzer, M. Frederic, C. Dubertret, B. Pitard, G. Jaslin and D. Scherman, *J. Med. Chem.*, 2000, **43**, 4377–4387.
- 33 C. Wölk, C. Janich, U. Bakowsky, A. Langner and G. Brezesinski, *Adv. Colloid Interface Sci.*, 2017, **248**, 20–34.
- 34 C. Wölk, M. Heinze, P. Kreideweiss, M. Dittrich, G. Brezesinski, A. Langner and B. Dobner, *Int. J. Pharm.*, 2011, **409**, 46–56.
- 35 C. Wölk, S. Drescher, A. Meister, A. Blume, A. Langner and B. Dobner, *Chem.–Eur. J.*, 2013, **19**, 12824–12838.
- 36 C. Janich, C. Wölk, S. Taßler, S. Drescher, A. Meister, G. Brezesinski, B. Dobner and A. Langner, *Eur. J. Lipid Sci. Technol.*, 2014, **116**, 1184–1194.
- 37 S. Tassler, C. Wölk, C. Janich, B. Dobner and G. Brezesinski, *Phys. Chem. Chem. Phys.*, 2017, **19**, 20271–20280.
- 38 M. Dittrich, M. Böttcher, J. S. L. Oliveira, B. Dobner, H. Möhwald and G. Brezesinski, *Soft Matter*, 2011, **7**, 10162–10173.
- 39 T. Schindler and E. Nordmeier, *Macromol. Chem. Phys.*, 1997, **198**, 1943–1972.
- 40 S. Gromelski and G. Brezesinski, *Langmuir*, 2006, **22**, 6293–6301.
- 41 E. Maltseva and G. Brezesinski, *ChemPhysChem*, 2004, **5**, 1185–1190.
- 42 A. H. Muentner, J. Hentschel, H. G. Börner and G. Brezesinski, *Langmuir*, 2008, **24**, 3306–3316.
- 43 J. K. Kauppinen, D. J. Moffatt, H. H. Mantsch and D. G. Cameron, *Appl. Opt.*, 1982, **21**, 1866–1872.
- 44 R. Frahm, J. Weigelt, G. Meyer and G. Materlik, *Rev. Sci. Instrum.*, 1995, **66**, 1677–1680.
- 45 J. Als-Nielsen, D. Jacquemain, K. Kjaer, F. Leveiller, M. Lahav and L. Leiserowitz, *Phys. Rep.*, 1994, **246**, 251–313.
- 46 K. Kjaer, *Phys. B*, 1994, **198**, 100–109.
- 47 T. R. Jensen and K. Kjaer, in *Novel Methods to Study Interfacial Layers*, ed. D. Möbius and R. Miller, Elsevier Science, 2001, vol. 11, pp. 205–254.
- 48 C. Stefaniu and G. Brezesinski, *Adv. Colloid Interface Sci.*, 2014, **207C**, 265–279.
- 49 C. Stefaniu and G. Brezesinski, *Curr. Opin. Colloid Interface Sci.*, 2014, **19**, 216–227.
- 50 D. Marsh, *Biochim. Biophys. Acta*, 1996, **1286**, 183–223.
- 51 M. Heinze, G. Brezesinski, B. Dobner and A. Langner, *Bioconjugate Chem.*, 2010, **21**, 696–708.
- 52 M. Dittrich, PhD thesis, University of Potsdam, Germany, 2011.
- 53 C. Stefaniu, I. Vilotijevic, M. Santer, D. V. Silva, G. Brezesinski and P. H. Seeberger, *Angew. Chem., Int. Ed.*, 2012, **51**, 12874–12878.
- 54 C. Stefaniu and G. Brezesinski, *Curr. Opin. Colloid Interface Sci.*, 2014, **19**, 216–227.
- 55 D. Marsh, *Chem. Phys. Lipids*, 2012, **165**, 59–76.
- 56 J. Katsaras, V. A. Raghunathan, E. J. Dufourc and J. Dufourcq, *Biochemistry*, 1995, **34**, 4684–4688.
- 57 F.-G. Wu, H.-Y. Sun, Y. Zhou, R.-G. Wu and Z.-W. Yu, *RSC Adv.*, 2014, **4**, 51171–51179.
- 58 G. S. Manning, *J. Chem. Phys.*, 1969, **51**, 924–933.
- 59 H. G. M. Van de Steeg, M. A. C. Stuart, A. Dekeizer and B. H. Bijsterbosch, *Langmuir*, 1992, **8**, 2538–2546.
- 60 J. Papenhuijzen, H. A. Vanderschee and G. J. Fleer, *J. Colloid Interface Sci.*, 1985, **104**, 540–552.
- 61 G. J. Fleer, M. A. Cohen Stuart, J. M. H. M. Scheutjens, T. Cosgrove and B. Vincent, *Polymers at Interfaces*, Chapman & Hall, 1993.
- 62 M. N. Antipina, B. Dobner, O. V. Konovalov, V. L. Shapovalov and G. Brezesinski, *J. Phys. Chem. B*, 2007, **111**, 13845–13850.

