

Figure S1. 72 hour HYSPLIT back trajectories starting at 500, 1000, and 1500 m Above Ground Level (AGL) for sites (a) ATTO, (b) ZF2, and (c) T3.

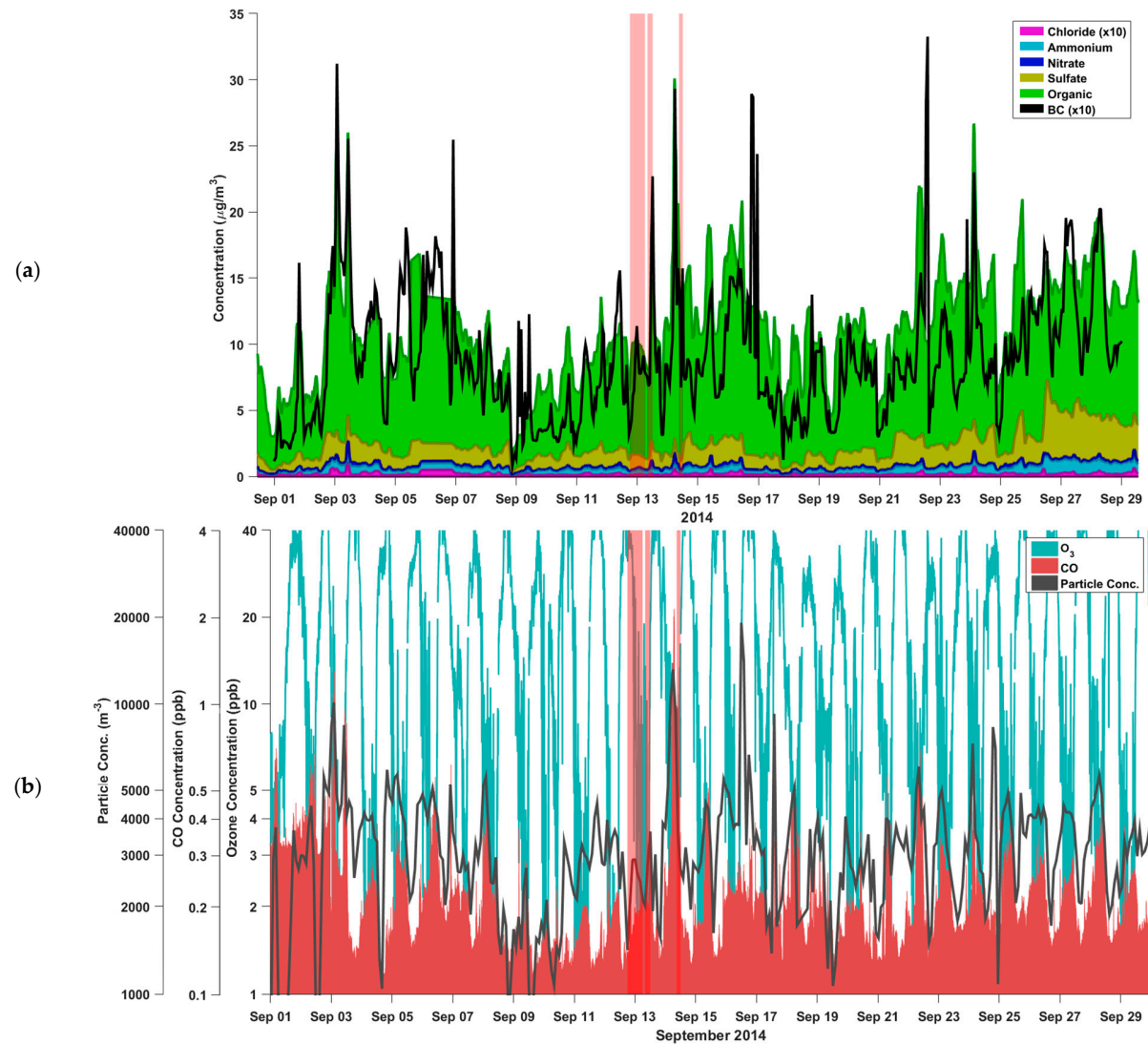


Figure S2. (a) AMS and BC and (b) Ozone, CO, and particle concentration time series for the month of September 2014 for the T3 Site. Light red bands represent sample collection periods. From right to left: 12 September 18:00–6:00, 13 September 8:00–12:00, 14 September 9:00–12:00.

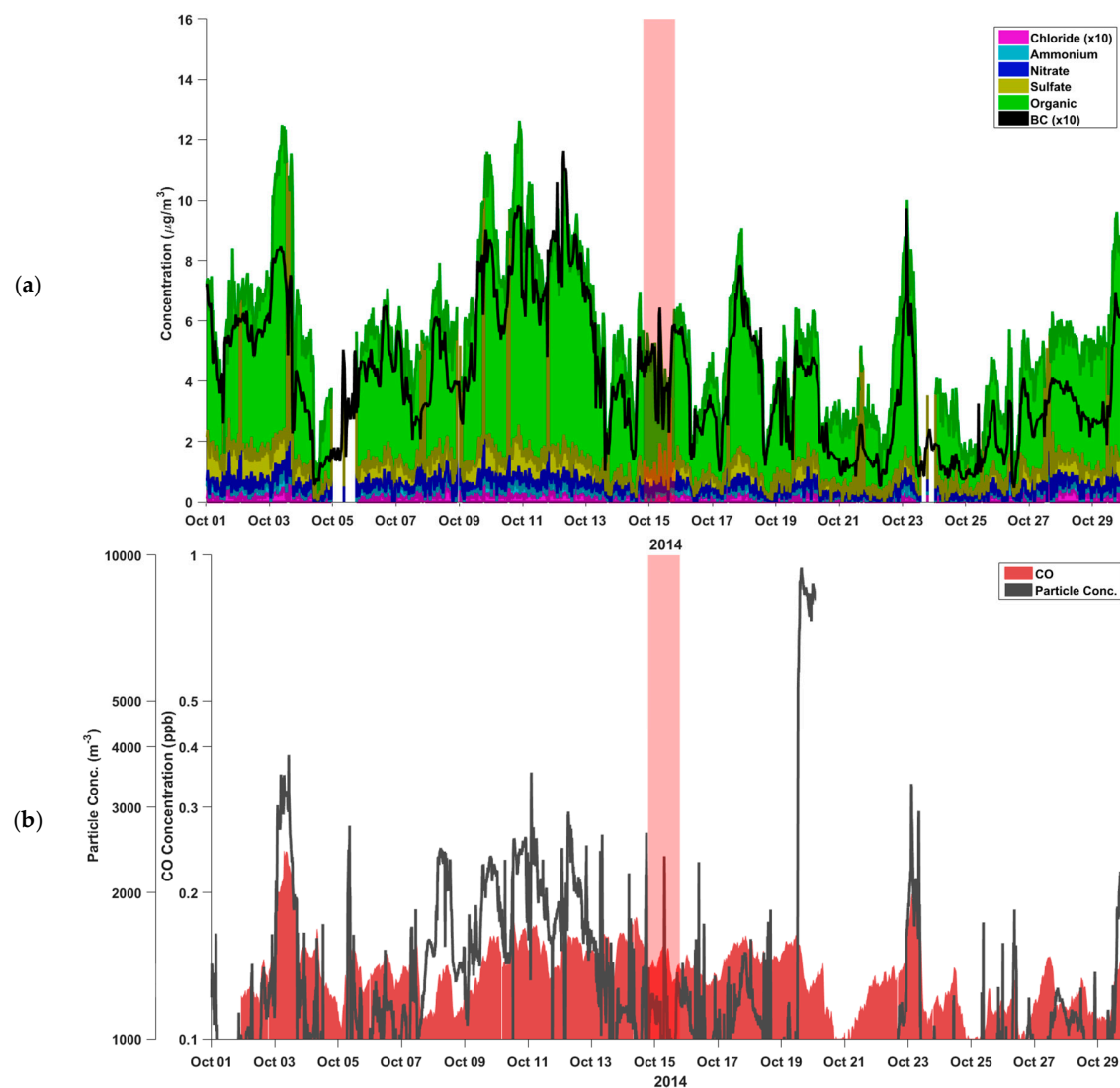


Figure S3. (a) AMS and BC and (b) CO and particle concentration time series for the month of October 2014 for the ATTO Site. The vertical light red band represents the sample collection period from 14 October 19:00–15 October 19:00.

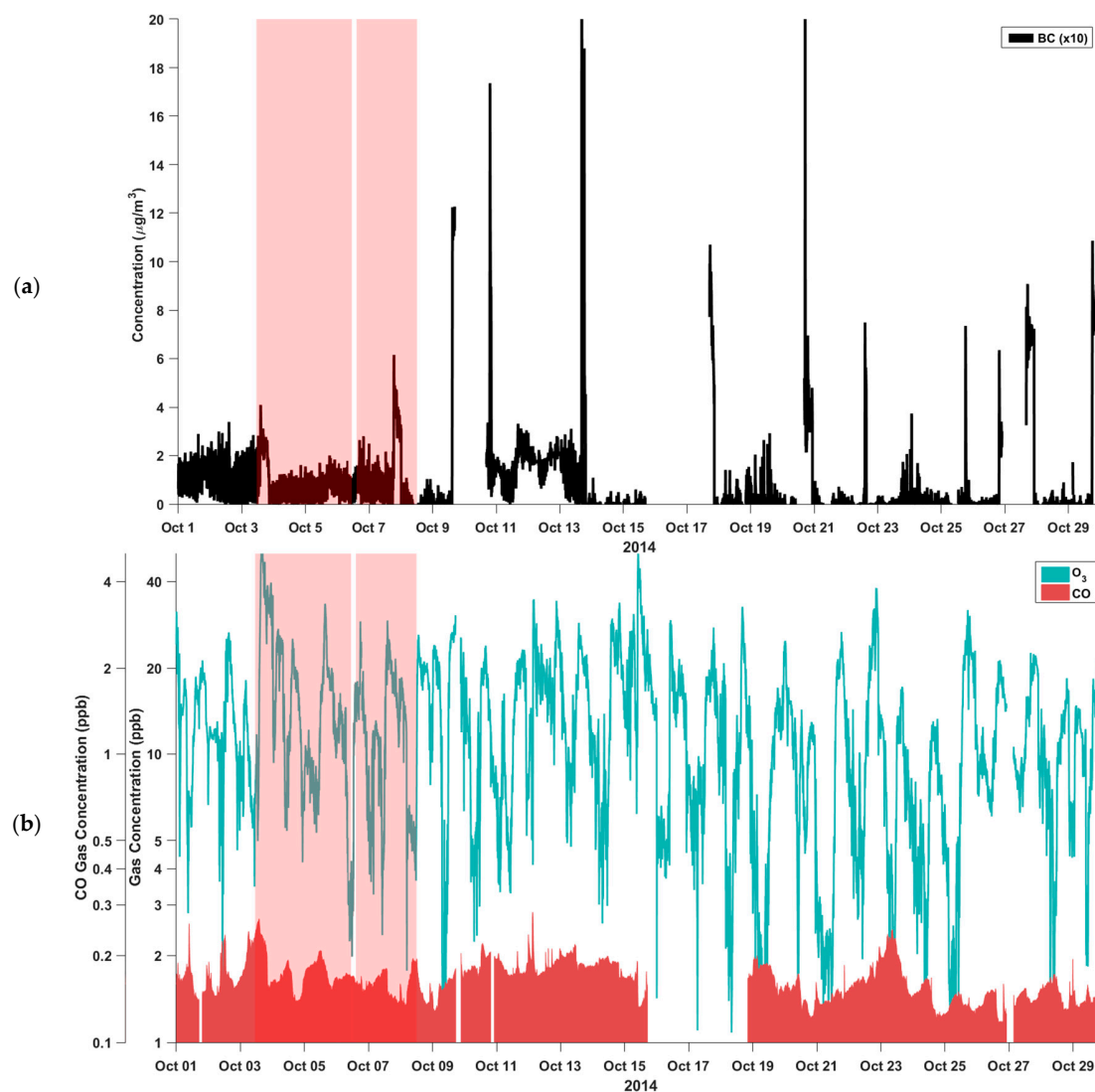


Figure S4. (a) BC and (b) Ozone and CO time series for the month of October 2014 for the ZF2 Site. Vertical light red bands represent sample collection periods. From right to left: 3 October 11:00–6 October 11:00 and 6 October 14:00–8 October 12:00.