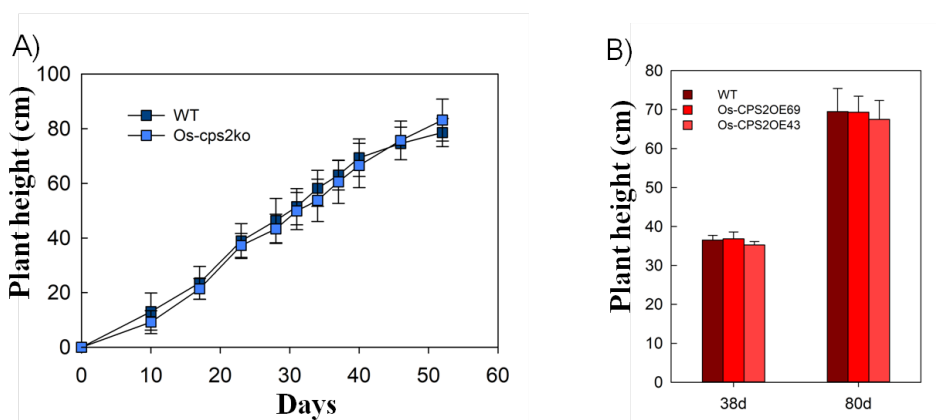
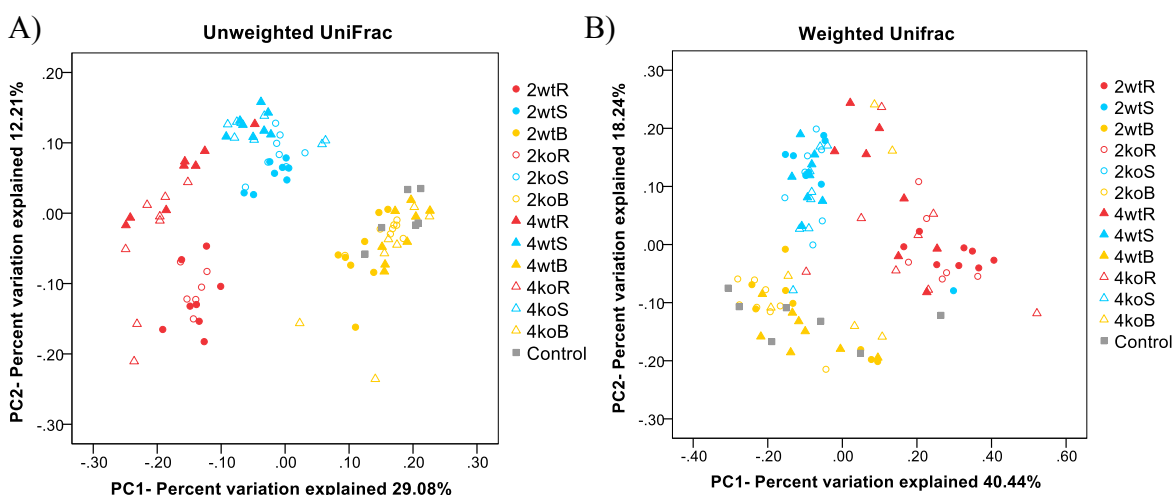


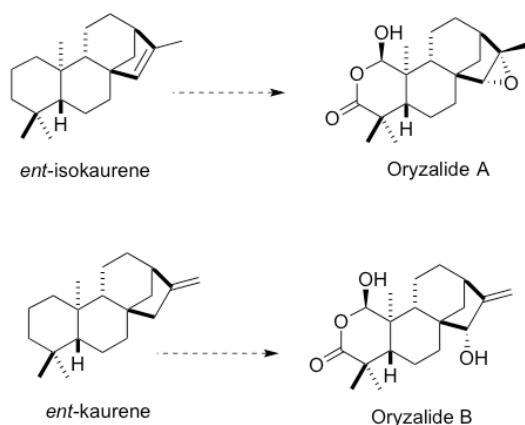
Supplemental Figure 1. Relative expression level of *Os-CPS* genes. Characterization of genetic manipulations of rice *CPSs* by RT-PCR of plants after Me-JA treatment. Actin expression was used as a control. A) *Os-cps2ko* plants no longer express *Os-CPS2*. In support of Figure 2. B) *Os-cps2i* plants (2i, with lines as indicated) exhibit reduced expression of *Os-CPS2*. In support of Figure 2. C) *Os-cps4i* plants (4i, with lines as indicated) exhibit reduced expression of *Os-CPS4*. In support of Figure 3. D) *Os-CPS2* in its wild-type and over-expression (OE) lines in the absence of MeJA induction. KitWT indicates the Kitaake cultivar used as the parental line. In support of Figure 4.



Supplemental Figure 2. Growth data for genetic manipulation of *Os-CPS2*. A) Relative growth of *Os-cps2ko* plants ($n = 17$) versus its parental/WT (*CPS2*) line ($n = 20$). In support of Figure 2. B) Relative growth of *Os-CPS2OE* lines versus their parental/WT line ($n = 8$). In support of Figure 4. Shown is plant height measured at indicated times after germination (error bars show standard deviation). Plants grown in growth chamber as described.



Supplemental Figure 3. Primary component analysis plot of bacterial composition. Shown either A) before or B) after weighting. 2ko indicates *Os-cps2ko* and 2wt, the relevant WT/parental line, while 4ko indicates *Os-cps4ko* and 4wt that relevant WT/parental line; R, rhizoplane; S, rhizosphere; B, bulk soil; control, bulk soil from pots without plants.



Supplemental Figure 4. Putative oryzalide-related diterpenoid biosynthetic pathways. Dashed arrows indicate multiple enzymatic reactions. In support of Figure 6.

Supplemental Table 1:Data for TM7-1 bacteria in the rhizosphere of *Os-cps2ko* vs WT/parental rice.

Level	Name	<i>p</i> -value ^a	WT ^b	<i>Os-cps2ko</i> ^b
Phyla	TM7	0.079	0.0129	0.0580
Class	-1	0.072	0.00714	0.0442
Order	unnamed	0.107	0.00714	0.0442
Family	unnamed	0.141	0.00714	0.0442
genus	unnamed	0.182	0.00714	0.0442

^aBenjamini-Hochberg FDR corrected^bmean percentage of population**Supplemental Table 2: Primers used in this study.**

Primer Name	Sequence (5' → 3')
CPS2-RNAi-1F	CCGAATTC AATGGAGGAAGCATGGACA
CPS2-RNAi-1R	CCGGATCC ATAACAACATGTGTATCTGGTG
CPS4-RNAi-1F	CCGAATTC AAAGTACGGAGAAAGTTGAGGA
CPS4-RNAi-1R	CCGGATCC GTCGTTGGCGTTCAGTATC
CPS2-RNAi-2F	GGTGTACAAAATGGAGGAAGCATGGACA
CPS2-RNAi-2R	GGACGCGTATAACAACATGTGTATCTGGTG
CPS4-RNAi-2F	GGTGTACAAAAGTACGGAGAAAGTTGAGGA
CPS4-RNAi-2R	GGACGCGTGTTCGTTGGCGTTCAGTATC
CPS2-OE-F	AAAAAGAATTCATGCAGATGCAGGTGCTCACCG
CPS2-OE-R	GGTTTTGTTTCGAGGATGTCAATTAGACTAGTGGGGG