



Annual Review of Cell and Developmental Biology
Assembly and Positioning of
the Oocyte Meiotic Spindle

Binyam Mogessie,^{1,2,*} Kathleen Scheffler,^{1,*}
and Melina Schuh¹

¹Department of Meiosis, Max Planck Institute for Biophysical Chemistry, 37077 Göttingen, Germany; email: melina.schuh@mpibpc.mpg.de

²Current affiliation: School of Biochemistry, University of Bristol, Bristol, BS8 1TD, United Kingdom

Annu. Rev. Cell Dev. Biol. 2018. 34:6.1–6.23

The *Annual Review of Cell and Developmental Biology* is online at cellbio.annualreviews.org

<https://doi.org/10.1146/annurev-cellbio-100616-060553>

Copyright © 2018 by Annual Reviews.
All rights reserved

*These authors contributed equally to this manuscript.

Keywords

meiosis, oocytes, centrosomes, spindle, chromosomes, kinetochores, asymmetric division

Abstract

Fertilizable eggs develop from diploid precursor cells termed oocytes. Once every menstrual cycle, an oocyte matures into a fertilizable egg in the ovary. To this end, the oocyte eliminates half of its chromosomes into a small cell termed a polar body. The egg is then released into the Fallopian tube, where it can be fertilized. Upon fertilization, the egg completes the second meiotic division, and the mitotic division of the embryo starts. This review highlights recent work that has shed light on the cytoskeletal structures that drive the meiotic divisions of the oocyte in mammals. In particular, we focus on how mammalian oocytes assemble a microtubule spindle in the absence of centrosomes, how they position the spindle in preparation for polar body extrusion, and how the spindle segregates the chromosomes. We primarily focus on mouse oocytes as a model system but also highlight recent insights from human oocytes.



Contents

1. INTRODUCTION	6.2
2. SPINDLE ASSEMBLY IN MAMMALIAN OOCYTES	6.3
2.1. Centrosome Elimination in Oocytes	6.3
2.2. Acentriolar MTOCs Replace Centrosome Function in Oocytes of Many Species	6.4
2.3. Chromatin-Dependent Microtubule Nucleation	6.4
2.4. Spindle Assembly in Mouse Oocytes	6.5
2.5. Spindle Assembly in Human Oocytes	6.6
3. CHROMOSOME SEGREGATION IN MAMMALIAN OOCYTES	6.7
3.1. Chromosome Alignment and Segregation in Mouse Oocytes	6.7
3.2. Spindle Actin Promotes Accurate Chromosome Segregation	6.8
3.3. Chromosome Alignment and Segregation in Human Oocytes	6.9
4. ASYMMETRIC OOCYTE DIVISION	6.11
4.1. Biological Significance of Asymmetric Oocyte Division	6.11
4.2. Actin and Microtubule Networks in Mouse Oocytes	6.11
4.3. Nuclear Positioning in Mouse Oocytes	6.12
4.4. Spindle Migration During Meiosis I in Mouse Oocytes	6.13
4.5. Spindle Positioning During Meiosis II in Mouse Oocytes	6.14
4.6. Cortical Polarization During Asymmetric Division	6.15
5. PERSPECTIVE	6.17

1. INTRODUCTION

When an egg is fertilized by a sperm, the chromosomes of the father and the mother are united, and a new and genetically unique embryo begins to develop. The embryo will develop correctly only if the egg and the sperm carry precisely one copy of each chromosome. However, human eggs frequently contain too many or too few chromosomes—a condition known as aneuploidy. Most aneuploidy results from chromosome segregation errors during the meiotic divisions of the egg. An egg develops from a diploid progenitor cell termed an oocyte. Oocytes are stored in the ovary from birth onward. Once every menstrual cycle, an oocyte resumes meiosis and eliminates half of its chromosomes into a small cell termed a polar body (**Figure 1**). The mature egg is then ovulated into the Fallopian tube, where it can be fertilized by sperm. Upon fertilization, it completes the second meiotic division and eliminates half of the remaining sister chromatids. The male and female pronuclei form and unite, and the mitotic divisions of the embryo start (**Figure 1**).

The cytoskeletal machineries that drive the meiotic divisions of oocytes are highly specialized. The female meiotic spindle lacks centrosomes, the main organizers of spindles in mitotic cells. Oocytes from different species have adopted different mechanisms to assemble a spindle in the absence of centrosomes. Strikingly, recent work has revealed that oocyte spindles require not only microtubules but also actin to function properly. In addition to mediating spindle assembly, centrosomes are also instrumental in positioning the spindle in many cell types: They nucleate astral microtubules, which often interact with a polarized cortex and mediate asymmetric spindle positioning. Additionally, oocytes have to position their spindle extremely asymmetrically to minimize the cellular material that is eliminated together with the chromosomes during the meiotic divisions. However, oocytes lack astral microtubules and have adopted actin-based mechanisms to achieve asymmetric division. This review summarizes recent advances in our understanding



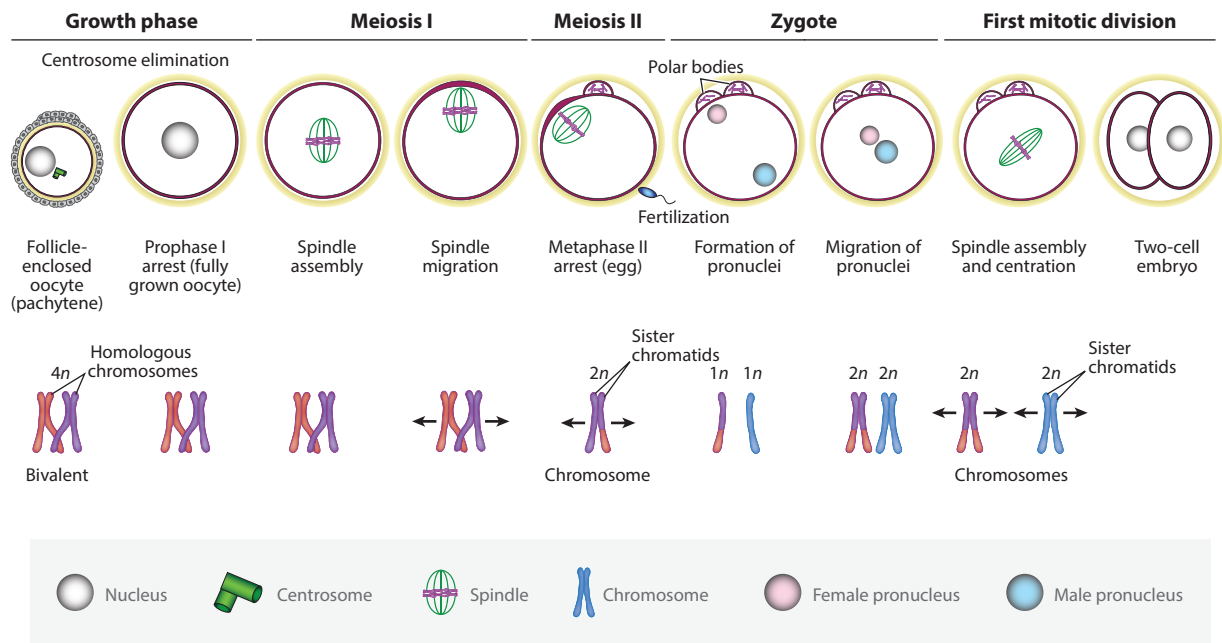


Figure 1

Stages from oocyte growth to formation of the early mouse embryo. During the early stages of oocyte development, homologous chromosomes pair and initiate recombination. A glycoprotein shell termed zona pellucida (shown in yellow) surrounds and protects the oocyte and embryo until the blastocyst hatches to implant into the uterus. Before meiotic resumption, the nucleus relocates to the oocyte center. Once every menstrual cycle, a cohort of fully grown oocytes is released from prophase I arrest and undergoes two rounds of asymmetric divisions. In meiosis I, the spindle assembles at the center and migrates to the oocyte surface, where half of the chromosomes are eliminated into the first polar body. The remaining chromosomes are captured by and organized on the second meiotic spindle that is assembled in the egg, which is now arrested in metaphase II. The second meiotic spindle assembles around the remaining half of chromosomes beneath the surface of the egg, which arrests in metaphase II. Fertilization triggers the segregation of half of the sister chromatids into the second polar body. Finally, the haploid pronuclei form and migrate to unite at the zygote center, where the first mitotic spindle of the embryo is assembled before symmetric division.

of the workings of the specialized cellular machineries that separate and partition chromosomes between oocyte and polar bodies during oocyte meiosis, with a focus on mechanisms in mammals.

2. SPINDLE ASSEMBLY IN MAMMALIAN OOCYTES

2.1. Centrosome Elimination in Oocytes

During mitosis, centrosomes serve as major sites of microtubule nucleation and form the two poles of the spindle (Prosser & Pelletier 2017, Vertii et al. 2016). Centrosomes consist of a pair of centrioles surrounded by pericentriolar material, which contains proteins that are required to nucleate and anchor microtubules (Vertii et al. 2016). Centrosomes duplicate during S-phase and are then distributed to the two daughter cells during mitosis.

However, in oocytes of several species, including mice (Szollosi et al. 1972), humans (Hertig & Adams 1967), worms (Mikeladze-Dvali et al. 2012), flies (Pimenta-Marques et al. 2016), and others (Manandhar et al. 2005), centrioles are eliminated before fertilization. In mice, centrioles are present until the pachytene stage of oogenesis (Szollosi et al. 1972) and are reassembled de novo in the early developing embryo (Courtois et al. 2012). Centrosomes are also lost during

oogenesis in *Drosophila melanogaster* oocytes (Pimenta-Marques et al. 2016). Here, elimination occurs in a stepwise manner: First, pericentriolar material components are lost, followed by the disappearance of centriolar proteins in the late stages of oogenesis before meiotic spindle assembly. In contrast, starfish oocytes eliminate their centrosomes during the meiotic divisions: In meiosis I, two centrosomes, each containing a pair of centrioles, form the spindle poles. During anaphase I, one of these centrosomes is eliminated into the first polar body. The other one remains in the egg and splits into two centrosomes with only one centriole each; these centrosomes then form the metaphase II spindle. During anaphase II, the mother centriole is eliminated into the second polar body, and the remaining daughter centriole is degraded in the egg's cytoplasm (Sluder et al. 1989). A recent study of starfish eggs revealed how the mother centriole is selectively eliminated (Borrego-Pinto et al. 2016). During meiosis II, the spindle pole with the mother centriole is positioned close to the cell membrane. Spindle positioning depends on the minus end-directed motor dynein, but the precise mechanism is still unclear. The mother centriole is then anchored to the cell membrane via its appendages and is subsequently eliminated into the second polar body (Borrego-Pinto et al. 2016). The remaining daughter centriole is then inactivated, as judged by loss of microtubule nucleation activity, and is ultimately degraded by unknown mechanisms.

Although it is still unclear why oocytes lack centrosomes, several possible explanations have been proposed (Manandhar et al. 2005). In organisms in which the sperm introduces a centrosome, centrosomes may need to be eliminated in the egg to avoid the zygote having too many centrosomes (Manandhar et al. 2005). Lack of centrosome-nucleated astral microtubules that push the spindle away from the cortex may also promote extrusion of very small polar bodies: The closer the spindle is to the cortex, the smaller is the amount of cytoplasm that is eliminated into the polar body (discussed by Severson et al. 2016). Also, the lack of an S-phase between the two meiotic divisions, in which centrosomes are normally duplicated, results in problems with centriole numbers, as exemplified by meiosis in starfish oocytes.

2.2. Acentriolar MTOCs Replace Centrosome Function in Oocytes of Many Species

Instead of having centrosomes, many oocytes have distinct microtubule-organizing centers (MTOCs) that lack centrioles. For instance, frog oocytes have a large, flat MTOC near the nucleus that drives spindle assembly (Gard 1992), and in worm oocytes, several MTOCs coalesce to form the spindle poles (Connolly et al. 2015). In *Drosophila* oocytes, MTOCs may also promote meiotic spindle assembly (Skold et al. 2005). Acentriolar MTOCs (aMTOCs) are also present in mouse oocytes and contain several centrosome proteins, including pericentrin (Carabatsos et al. 2000), γ -tubulin (Gueth-Hallonet et al. 1993) and its partner NEDD1 (Ma et al. 2010), and Cep192 (Clift & Schuh 2015). aMTOCs serve as a major site of microtubule nucleation and functionally replace centrosomes in mouse oocytes (Schuh & Ellenberg 2007). Whether aMTOCs participate in meiotic spindle assembly in human oocytes is unclear (Battaglia et al. 1996a,b; George et al. 1996; Holubcova et al. 2015; Pickering et al. 1988). Instead, chromosome-dependent nucleation of microtubules plays a major role in human oocyte spindle assembly (Holubcova et al. 2015).

2.3. Chromatin-Dependent Microtubule Nucleation

That chromosomes can drive spindle assembly was first discovered more than two decades ago. The introduction of DNA-coated beads into frog egg extracts that lack centrosomes led to self-assembly of a spindle structure around the DNA (Heald et al. 1996). This seminal study demonstrated that chromosomes were not mere passengers of the spindle machinery but could help to build it.



Chromatin-dependent mechanisms of microtubule nucleation and spindle assembly have since been studied in great detail. The chromosomes promote spindle assembly by local activation of the small GTPase Ran (Carazo-Salas et al. 1999). Ran in turn releases microtubule nucleation factors, motor proteins, and other microtubule-associated proteins from inhibitory binding to importins, promoting the assembly of microtubules in proximity to the chromosomes (Clarke & Zhang 2008, Petry 2016).

Ran-mediated microtubule nucleation pathways are of major importance for spindle assembly in frog egg extracts and cell-free systems (Halpin et al. 2011, Kalab et al. 2006). Such pathways also facilitate the rapid assembly of the spindle in mitotic cells but are not essential to forming a mitotic spindle (Maresca et al. 2009). Also in mouse and frog oocytes, inhibition of the Ran-GTP pathway does not completely block spindle assembly (Bury et al. 2017, Dumont et al. 2007b, Schuh & Ellenberg 2007). aMTOC-driven spindle assembly is dominant over the Ran-GTP pathway in mouse oocytes: Spindles that eventually form in the absence of the Ran-GTP pathway fail to assemble when aMTOCs are also disrupted (Baumann et al. 2017). In contrast, Ran-GTP-mediated nucleation of microtubules from the chromosomes is of major importance for spindle assembly in human oocytes, suggesting that it is particularly important in oocytes that lack prominent MTOCs (Holubcova et al. 2015).

2.4. Spindle Assembly in Mouse Oocytes

The mechanism by which aMTOCs mediate spindle assembly is best understood in mice. Participation of aMTOCs in meiotic spindle assembly was suggested in early immunofluorescence studies of mouse oocytes (Maro et al. 1985, Van Blerkom 1991) and was later confirmed by live cell microscopy (Schuh & Ellenberg 2007). Upon release from prophase arrest, multiple aMTOCs start to nucleate microtubules throughout the cytoplasm and on the nuclear envelope. They then converge onto the oocyte nucleus, where they nucleate microtubules that grow at similar speeds as mitotic microtubules (**Figure 2**) (Schuh & Ellenberg 2007). On the nuclear envelope, aMTOCs are exposed to extensive stretching forces and some degree of fragmentation via the action of microtubules and the minus end-directed motor dynein: Depolymerization of microtubules, blocking dynein's activity, or detaching dynein from the nuclear envelope by removal of its adapter BicD2 prevents aMTOC stretching (**Figure 2**) (Clift & Schuh 2015, Luksza et al. 2013). After nuclear envelope breakdown (NEBD), aMTOCs are further fragmented and redistributed into many smaller aMTOCs, this time driven by the kinesin-5 family member KIF11 (Clift & Schuh 2015). Soon after NEBD, a Ran-dependent surge in the nucleation activity of fragmented aMTOCs generates a microtubule ball onto which chromosomes are distributed in a circular fashion (Schuh & Ellenberg 2007).

The aMTOCs are then expelled outward to the surface of the microtubule ball by the antiparallel microtubule-sliding motor activity of KIF11 (**Figure 2**) (Schuh & Ellenberg 2007). Gradual clustering of multiple aMTOC poles into two dominant poles then transforms this multipolar intermediate into a bipolar structure. Sorting of aMTOCs into spindle poles involves hepatoma-upregulated protein (HURP) (Breuer et al. 2010), a microtubule-associated protein that stabilizes microtubules near mitotic chromosomes (Koffa et al. 2006, Sillje et al. 2006). Its depletion in mouse oocytes lowers the density of microtubules during spindle assembly and leads to failure of aMTOC sorting and spindle bipolarization (Breuer et al. 2010). Similarly to mitosis, nuclear mitotic apparatus (NuMA) (Merdes et al. 1996) stabilizes acentriolar spindle poles by anchoring microtubule minus ends in mouse oocytes (Kolano et al. 2012). Merging smaller aMTOC foci into poles could be an evolutionarily conserved pathway of building spindle poles because coalescence of foci is also apparent in oocytes of worms and flies (Connolly et al. 2015, Skold et al. 2005).



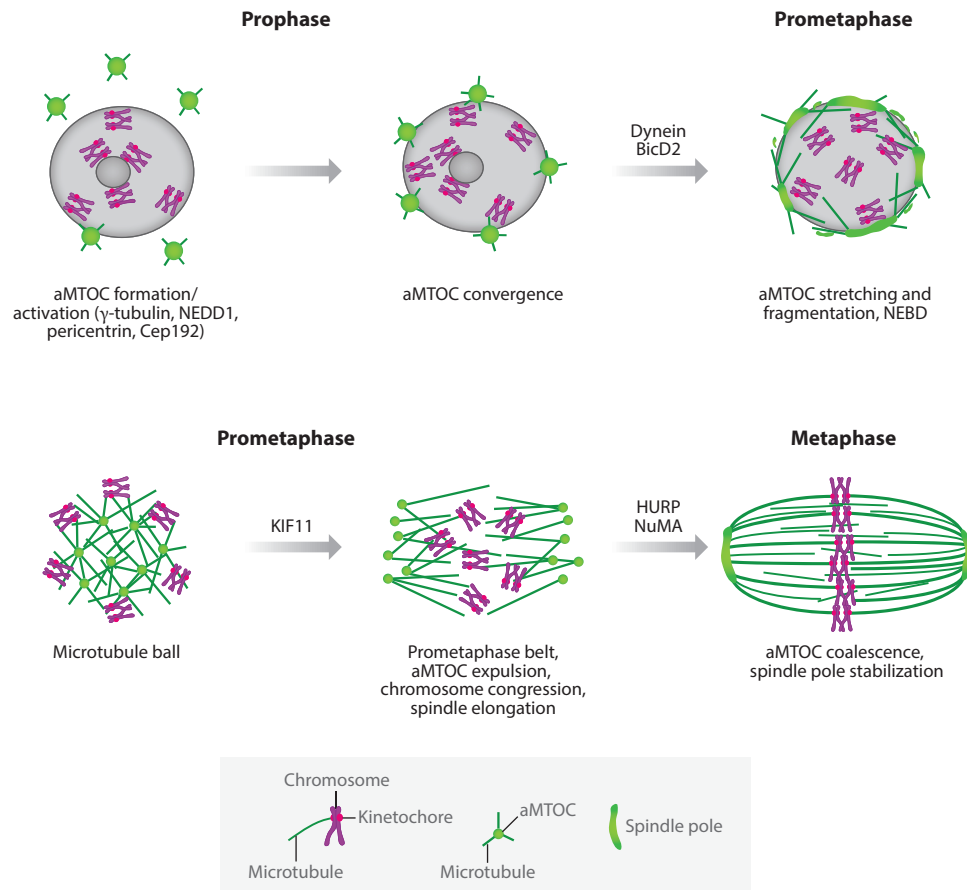


Figure 2

Acentriolar meiotic spindle assembly in mouse oocytes. Upon meiotic resumption, acentriolar microtubule-organizing centers (aMTOCs) start to nucleate microtubule asters and converge toward the nucleus, where they are stretched and fragmented in a dynein-dependent manner. After nuclear envelope breakdown (NEBD), a microtubule ball forms with aMTOCs in its interior, and the chromosomes are distributed in a circular fashion, forming a distinctive prometaphase belt. The aMTOCs are then expelled outward, and the microtubule ball bipolarizes by the action of the KIF11 motor. Bipolar spindle formation is completed when aMTOCs are coalesced and spindle poles are stabilized, a process that involves the microtubule-associated proteins nuclear mitotic apparatus (NuMA) and hepatoma-upregulated protein (HURP).

Mechanistic details of aMTOC clustering in these and other model systems were discussed in recent reviews (Bennabi et al. 2016, Severson et al. 2016).

2.5. Spindle Assembly in Human Oocytes

Chromosome segregation errors in human oocytes frequently result in the fertilization of aneuploid eggs. The reasons why a process so vital to human life is prone to mistakes have been the topic of extensive research spanning decades. However, we are just beginning to understand the mechanisms of chromosome segregation during female meiosis in humans. Well-studied causes of chromosome missegregation such as the age-dependent loss of cohesin have been covered in recent reviews (Capalbo et al. 2017, Herbert et al. 2015, Webster & Schuh 2017). Here, we limit

our discussion to highlight recent findings that have advanced our understanding of chromosome segregation mechanisms in human oocytes.

Advances in the field of meiosis research in human oocytes were hindered by the limited availability of cells for use in research, compounded by the lack of microscopy assays for studying meiotic chromosome segregation in living human oocytes. Collaboration with fertility clinics and innovation of the necessary live imaging techniques have recently provided new insights into how meiosis progresses and how the spindle is assembled in human oocytes (Holubcova et al. 2015). Human oocytes assemble a spindle in a lengthy process that does not involve prominent aMTOCs (Holubcova et al. 2015). Upon NEBD, the oocytes first cluster their chromosomes into an aggregate. Only several hours later do microtubules start to be nucleated from within the aggregate and the chromosome's kinetochores. The microtubule mass then slowly but continuously increases over several hours. This increase in microtubule nucleation is strictly dependent on Ran and is therefore mainly chromosome driven. As the spindle assembles, it undergoes extensive reorganization. During this reorganization phase, the spindle frequently fragments into multipolar spindle intermediates, which then merge again into a bipolar spindle structure. As the spindle reorganizes, the chromosomes become aligned in the spindle center in a stepwise manner. However, chromosomes frequently remain incorrectly attached to the spindle poles. During meiosis I, the two sister kinetochores should be oriented and linked toward the same spindle pole. But in human oocytes, they are often attached to opposite spindle poles. These merotelic attachments are a frequent cause of lagging chromosomes during anaphase in cancer cells and have been suggested to be favored by multipolar spindle intermediates (Ganem et al. 2009). Multipolar spindle intermediates also correlate with lagging chromosomes in human oocytes, suggesting that spindle instability may lead to increased baseline aneuploidy in this cell type. The spindles that are formed before anaphase onset in human oocytes also have a rather special morphology: They consist of loosely clustered short microtubule bundles and have very broad spindle poles. Further investigation is required to identify additional molecular players that are involved in the formation of human oocyte spindles.

3. CHROMOSOME SEGREGATION IN MAMMALIAN OOCYTES

Chromosome segregation errors are a leading cause of aneuploidy in eggs (Hassold & Hunt 2001). The frequency of aneuploid eggs increases with age, a correlation often referred to as the maternal age effect (Herbert et al. 2015, Nagaoka et al. 2012). To segregate chromosomes equally between the oocyte and the polar body, the chromosomes are first aligned on the spindle equator. During anaphase, shortening of a stable population of microtubules that are connected to the kinetochores (k-fibers) pulls the chromosomes toward opposite spindle poles (Cheeseman & Desai 2008, Maiato et al. 2004).

3.1. Chromosome Alignment and Segregation in Mouse Oocytes

Meticulous tracking of kinetochores and chromosomes in live mouse oocytes has revealed that chromosome alignment on the meiosis I spindle is established in distinct phases (Kitajima et al. 2011, Schuh & Ellenberg 2007). First, kinetochores and chromosomes are individualized on the surface of the microtubule ball. Next, the ball extends, and the chromosomes form a loose ring around the forming ellipse, termed the prometaphase belt (**Figure 2**). The chromosomes then invade the spindle and form the metaphase plate (Kitajima et al. 2011).

In meiosis, recombined homologous chromosome pairs are held together and arranged into a meiosis-specific bivalent structure (**Figure 1**). During meiosis I, the two sister kinetochores of each chromosome are paired and face toward the same spindle pole. In mouse oocytes, the pairing



of sister kinetochores is dependent on the meiosis-specific kinetochore protein MEIKIN (Kim et al. 2015). Chromosomes are bioriented only after completion of chromosome congression and during elongation of the microtubule ball into a bipolar spindle (Kitajima et al. 2011). However, most kinetochore-microtubule interactions are initially incorrect and go through multiple rounds of correction before they are eventually stabilized (Kitajima et al. 2011). This intrinsically error-prone process becomes even more defective with increasing age in mice (Shomper et al. 2014), suggesting that incorrect kinetochore-microtubule interactions may contribute to age-related aneuploidy in eggs, independently of cohesin loss (Herbert et al. 2015). This problem may be further exacerbated by recently reported microtubule dynamics defects in aged oocytes (Nakagawa & FitzHarris 2017). Analysis of microtubules in spindles from young and aged mouse oocytes revealed differences in microtubule growth rates and organization. In particular, older oocytes contained fewer stable microtubules associated with kinetochores. Importantly, changes in microtubule dynamics are intrinsically coupled to advanced maternal age: Substituting old chromosomes for young chromosomes by nuclear transfer did not prevent the formation of defective multipolar spindles in aged oocytes (Nakagawa & FitzHarris 2017).

Once chromosomes are fully bioriented on the metaphase plate, they are partitioned toward the opposite spindle poles. In mitotic cells, shortening of k-fibers (anaphase A) first separates the chromosomes, which are then pulled apart even further by spindle elongation (anaphase B). Surprisingly, in mouse oocytes, anaphase B spindle elongation precedes anaphase A (FitzHarris 2012). Early onset of anaphase B is driven by the kinesin motor KIF11 and is coupled to loss of kinetochore-microtubule attachments during anaphase A (FitzHarris 2012).

3.2. Spindle Actin Promotes Accurate Chromosome Segregation

Recent work has identified an actin-dependent mechanism that promotes the accurate segregation of chromosomes in oocytes. Actin is generally thought to be dispensable for chromosome segregation. However, the microtubule spindle in mouse oocytes (Azoury et al. 2008, Schuh & Ellenberg 2008) as well as in human, pig, and sheep oocytes (Mogessie & Schuh 2017) is permeated by prominent actin filaments (spindle actin), whose function was previously unknown. Surprisingly, we found that the accurate segregation of chromosomes in both meiotic divisions of mouse oocytes critically relies on actin (**Figure 3**). Pharmacological or genetic disruption of actin leads to lagging chromosomes during anaphase I and II (Mogessie & Schuh 2017), independently of previously reported functions of actin in vesicle transport (Schuh 2011), spindle positioning (Azoury et al. 2008, Schuh & Ellenberg 2008), and cytokinesis (Kubiak et al. 1991). Disruption of actin throughout maturation or acutely in meiosis II also leads to chromosome misalignment in eggs. These alignment defects directly lead to aneuploidy because eggs progress into anaphase II with misaligned chromosomes (Mogessie & Schuh 2017).

Loss of actin significantly reduced the density of k-fibers, whereas enriching spindles in actin increased k-fiber density. These data suggest that actin promotes the formation of k-fibers (**Figure 3**) (Mogessie & Schuh 2017). The shortening of k-fibers drives the segregation of chromosomes during anaphase (Cheeseman & Desai 2008, Maiato et al. 2004). The observation that chromosomes frequently lag when actin is depolymerized in oocytes therefore supports our model of actin-dependent k-fiber formation (**Figure 3**).

The surprising involvement of actin in the formation of kinetochore fibers may also be conserved beyond mammals. Notably, actin has been reported in meiotic spindles of a variety of species, including spermatocytes of insects (Silverman-Gavrila & Forer 2000), maize sporocytes (Staiger & Cande 1991), and frog oocytes (Weber et al. 2004). Moreover, there is evidence that myosins and actin are required for accurate spindle assembly during meiosis in several species



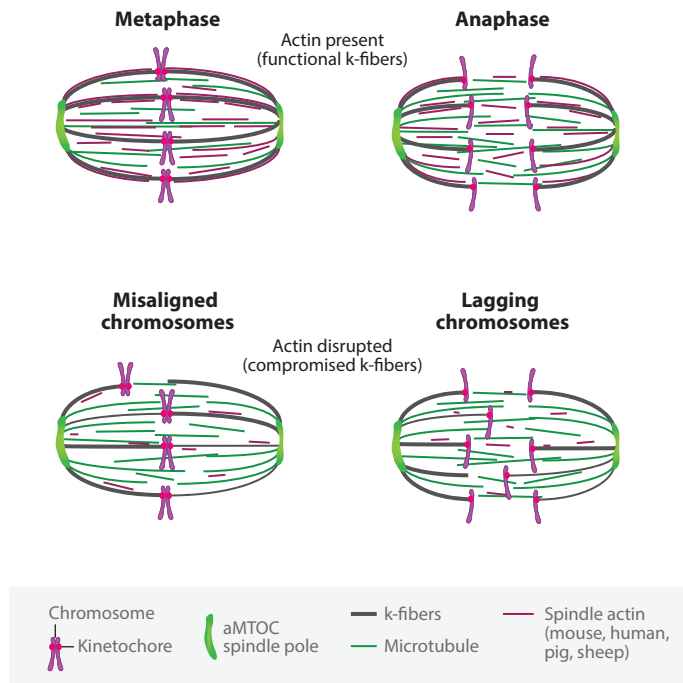


Figure 3

Chromosome segregation by meiotic spindles in mouse oocytes. Microtubules drive the positioning of chromosomes within the spindle. In mouse oocytes, spindle actin helps to bundle microtubules into functional k-fibers. These robustly bundled k-fibers drive accurate alignment and segregation of chromosomes. Loss of spindle actin reduces k-fiber stability and leads to chromosome misalignment in metaphase and to lagging chromosomes in anaphase.

(Sandquist et al. 2011). For instance, myosin 10 is required for spindle assembly in frog oocytes (Weber et al. 2004). Furthermore, acute disruption of actin filaments during anaphase in insect spermatocytes has been reported to influence the movement of chromosomes (Forer & Pickett-Heaps 1998). In starfish oocytes, in which cytoplasmic microtubules are too short to capture the kinetochores, a contractile network of actin transports the chromosomes within reaching distance of microtubules (Lenart et al. 2005). That spindle actin is also present in human, pig, sheep, and possibly other mammalian oocytes (Mogessie & Schuh 2017) hints at a conserved function of actin in safeguarding chromosome segregation during meiosis.

3.3. Chromosome Alignment and Segregation in Human Oocytes

In human oocytes, not only spindle instability but also the unique configuration of the bivalent chromosomes represents a challenge for chromosome segregation. Unlike in mitosis, sister kinetochores in meiosis I are connected to microtubules emanating from the same spindle pole, which allows for the segregation of homologous chromosomes but not that of sister chromatids during anaphase I (**Figure 4**). The kinetochores of sister chromatids that make up each homolog (sister kinetochores) are fused in many species (Corbett et al. 2010, Kim et al. 2015, Li & Dawe 2009, Sarangapani et al. 2014). In comparison, instead of being paired into one functional unit, the sister kinetochores of human bivalent chromosomes are split and interact with microtubules as

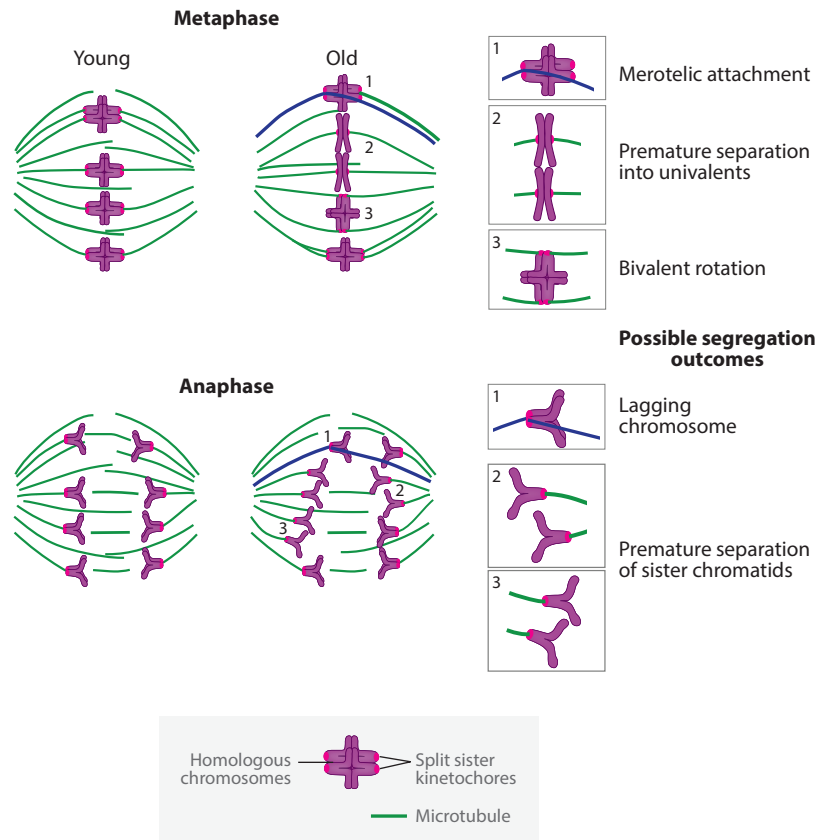


Figure 4

Error-prone chromosome segregation by meiotic spindles in human oocytes. Sister kinetochores in human oocytes become increasingly separated with maternal age. Kinetochore splitting promotes incorrect microtubule attachments and unconventional geometries of bivalents. A single kinetochore can be attached to k-fibers originating from both spindle poles (merotelic attachment; *blue* k-fibers), which is a leading cause of lagging chromosomes in anaphase (1). Some bivalents in old human oocytes are prematurely separated into univalents (2), whereas others are fully rotated (3), both of which could lead to premature separation of sister chromatids in anaphase I.

two separate units, even in oocytes of young women (Patel et al. 2015, Zielinska et al. 2015). The degree of kinetochore separation increases further as women get older (Patel et al. 2015, Zielinska et al. 2015). Split kinetochores are more frequently merotelically attached than fused kinetochores (Zielinska et al. 2015). Split kinetochores also allow bivalents to rotate on the spindle and to orient as in mitosis instead of orienting as in meiosis, with both sister kinetochores facing toward opposite poles (inverted bivalents) (Figure 4) (Zielinska et al. 2015). Bivalents also frequently contain large gaps between their chromosome arms and tend to separate into univalents (premature separation of sister chromatids) before anaphase onset (Sakakibara et al. 2015, Zielinska et al. 2015). These univalents typically align on the spindle and behave like mitotic chromosomes. Both univalents and inverted bivalents become more frequent as women get older, suggesting that both are major factors contributing to the increase in aneuploid eggs with advancing maternal age. Indeed, a recent genetic study has reported that reverse segregation patterns, in which chromosomes behave

like mitotic chromosomes in meiosis I, are a frequent contributing factor to aneuploidy in human eggs (Ottolini et al. 2015).

4. ASYMMETRIC OOCYTE DIVISION

Chromosome segregation in oocytes involves two highly asymmetric divisions, in which half of the homologous chromosomes (meiosis I) and half of the sister chromatids (meiosis II) are eliminated into two small cells termed polar bodies. Recent work has shed light on how these extremely asymmetric divisions are achieved.

4.1. Biological Significance of Asymmetric Oocyte Division

Despite dividing twice, the oocyte needs to preserve as much cytoplasm as possible, as the cytoplasm contains energy resources, maternal mRNAs, and proteins that are required for embryo development (Brunet & Verlhac 2011, Li et al. 2010). To this end, it eliminates the surplus chromosomes into two small polar bodies, which contain only little cytoplasm and are often degenerated before fertilization (Schmerler & Wessel 2011).

Spindle positioning in many mitotic cells crucially relies on the microtubule cytoskeleton (Kotak & Gönczy 2013). The spindle's centrosomes nucleate astral microtubules, which interact with the cell cortex in a dynein-dependent manner and help to position the spindle. Polarization of the cortex results in an asymmetry of forces and is typically involved in positioning the spindle asymmetrically.

In contrast, meiotic spindles in oocytes lack centrosomes at their poles and are devoid of prominent astral microtubules (Sathananthan et al. 2006, Schuh & Ellenberg 2007, Szollosi et al. 1972). Thus, oocytes utilize specialized strategies to position the spindle asymmetrically. Among mammals, the mechanisms underlying asymmetric oocyte division are best understood in the mouse, which is the focus of this review.

4.2. Actin and Microtubule Networks in Mouse Oocytes

Mouse oocytes undergo several transitions between symmetric and asymmetric organization as they progress through meiosis and become fertilized (**Figure 1**). During early oocyte development, the nucleus is often off centered. As the oocyte grows in the follicle and acquires the competence to resume meiosis, the nucleus becomes centralized (Brunet & Maro 2007). Subsequently, the meiosis I spindle assembles at the center and migrates to the oocyte surface, where the first polar body will be extruded. Afterward, the second meiotic spindle forms beneath the plasma membrane and is anchored at this asymmetric position during metaphase II arrest. Upon fertilization, the pronuclei form at the periphery of the zygote and migrate toward its center. Pronuclear migration and the centration of the spindle in the zygote ensure that the first mitotic division is symmetric and that both blastomeres obtain equal amounts of cytoplasm (Chaigne et al. 2016).

The actin cytoskeleton and microtubule cytoskeleton have crucial roles in establishing and breaking symmetry in oocytes. During prophase I arrest, an interphase-type network of microtubules is present in the cytoplasm (Luksza et al. 2013). In addition, a dense actin meshwork organized from linear interconnected filaments fills the cytoplasm that surrounds the nucleus (Azoury et al. 2008, Schuh 2011, Schuh & Ellenberg 2008). This cytoplasmic actin network is generated by the actin nucleator Formin-2 (Azoury et al. 2008, Dumont et al. 2007a, Schuh & Ellenberg 2008) in cooperation with the spire-type actin nucleation factors Spire1 and -2 (Pfender et al. 2011). It was revealed that Formin-2 and Spire1/2 colocalize with Rab11a to nucleate actin



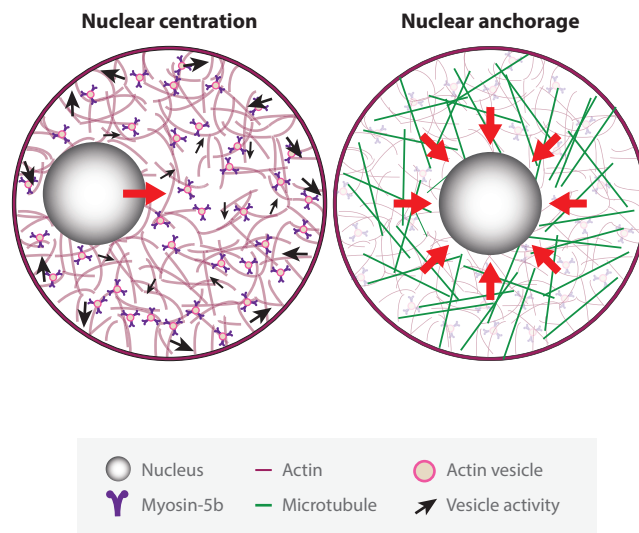


Figure 5

Nuclear positioning in mouse oocytes. (*Left*) Before breaking down in meiosis I, the nucleus relocates to the center of the growing oocyte. A dynamic network of actin and vesicles is present in the cytoplasm of mouse oocytes. Vesicles closer to the oocyte surface move rapidly (*large black arrows*), while more central vesicles move more slowly (*small black arrows*), thereby creating a gradient of vesicle motility. This gradient relies on Myosin-5b and has been proposed to generate propulsion forces that center the oocyte nucleus (*red arrow*). (*Right*) In mature oocytes, the nucleus is maintained at the center through yet unknown mechanisms. Microtubules may counteract actin-dependent forces that could otherwise drive the nucleus toward the periphery.

filaments from the surfaces of vesicles in mouse oocytes (Schuh 2011). Blocking Rab11a-positive vesicle formation by a dominant-negative variant released actin nucleators into the cytoplasm and increased the network density (Holubcova et al. 2013), consistent with a model in which sequestration of actin nucleation factors at vesicles and at the plasma membrane helps to control the network density.

In mouse oocytes, vesicles are connected with each other and the cell surface through actin filaments. This actin-vesicle network has been implicated in long-range transport toward the plasma membrane (Schuh 2011). Vesicles move toward neighboring vesicles and toward the cell surface along cytoplasmic and cortical actin filaments in a Myosin-5b-dependent manner, generating an outward-directed motion.

4.3. Nuclear Positioning in Mouse Oocytes

Actin may be a key player in the process that leads to nuclear centering in growing oocytes. In *Fmn2*^{-/-} oocytes, where the cytoplasmic actin network is absent, the nucleus is often off centered (Azoury et al. 2008, 2011; Dumont et al. 2007a; Schuh & Ellenberg 2008). Restoring the actin network in *Fmn2*^{-/-} oocytes by microinjection of Formin-2 mRNA drives the nucleus to the oocyte center (**Figure 5**) (Almonacid et al. 2015). Nuclear centering also depends on Myosin-5b-driven vesicle motion: Blocking Myosin-5b activity using its dominant-negative variant blocks nuclear centering. Furthermore, vesicles move at faster speeds when near the oocyte surface (**Figure 5**) (Almonacid et al. 2015). Mathematical modeling suggests that such differences in vesicle motility may create a pressure gradient and propulsion forces that may help to center the

nucleus. This mechanism may also be conserved in zygotes because inhibition of Myosin-5b blocks centering of the female and male pronuclei (Chaigne et al. 2016).

In contrast, maintenance of the nucleus at the center may depend on microtubules, as nuclei become off centered when microtubules but not actin filaments are depolymerized (**Figure 5**) (Alexandre et al. 1989). This off-centering is suppressed when both microtubules and actin are simultaneously depolymerized. This observation suggests that microtubules may help to maintain the oocyte nucleus in a central position by counteracting actin-dependent forces that would otherwise drive the nucleus toward the periphery.

4.4. Spindle Migration During Meiosis I in Mouse Oocytes

Upon resumption of meiosis I in mouse oocytes, the nucleus breaks down, and the spindle assembles at the oocyte center. Three to five hours after NEBD, it relocates to the cortex, where the chromosomes are segregated. Despite the nuclear centration mechanisms discussed above, the nucleus in mouse oocytes is still slightly off centered before NEBD (Schuh & Ellenberg 2008). Consequently, the spindle assembles with one of the poles closer to the oocyte surface. The spindle does not migrate to a predetermined site but always migrates along its long axis in the direction of the pole that is closer to the oocyte surface (Schuh & Ellenberg 2008, Verlhac et al. 2000).

In contrast to mitosis, spindle relocation in meiosis is independent of microtubules and solely relies on actin: Depolymerization of actin, but not that of microtubules, perturbs spindle migration (Longo & Chen 1985, Schuh & Ellenberg 2008, Verlhac et al. 2000).

Several actin structures have been implicated in asymmetric spindle positioning. One of these structures is the cytoplasmic actin network (Azoury et al. 2008, Schuh & Ellenberg 2008). Asymmetric spindle positioning fails in oocytes that lack a cytoplasmic actin network, due to the absence of Formin-2 or Spire1/2 (Dumont et al. 2007a, Pfender et al. 2011). Additionally, the transport of vesicles along such a network is required for asymmetric spindle positioning, as asymmetric spindle positioning fails when Myosin-5b or Rab11a is inhibited (Holubcova et al. 2013).

Previous observations of the actin network in live oocytes suggested that actin filaments are pulled into the spindle and enriched at spindle poles (Azoury et al. 2008, Schuh & Ellenberg 2008). Consistently, spindle pole-generated forces pull the oocyte cortex inward. These forces may depend on Myosin-2, another actin-based motor. The active form of Myosin-2 localizes to the spindle poles. Blocking Myosin-2 function by drug-mediated inhibition of the Myosin light chain kinase or by antibody injection slows down spindle relocation and stops pole-directed motion of actin filaments (Schuh & Ellenberg 2008, Simerly et al. 1998). On the basis of these findings, a model was proposed whereby connection of the meiotic spindle to the vesicle-actin network supports its migration to the cortex. In this model, Myosin-2 links the spindle to the cytoplasmic actin network and mediates the outward-directed movement of the spindle. This movement is further supported by Myosin-5b-driven outward-directed motion of vesicles, which are associated with actin filaments that are linked to the spindle (**Figure 6**) (Holubcova et al. 2013, Schuh & Ellenberg 2008).

In addition to the cytoplasmic meshwork, the actin cortex, a thick actin layer that surrounds the oocyte surface, also plays a crucial role in asymmetric spindle positioning (Chaigne et al. 2013). After NEBD, the actin cortex becomes thicker, and an inner layer of actin (the subcortex) forms underneath the cortex. Formation of the subcortex and cortical thickening require another actin nucleator, the Arp2/3 complex (Azoury et al. 2008). Cortical thickening, which is coincidental with Myosin-2 removal from the cortex (Chaigne et al. 2015), is proposed to soften the cortex and to thereby facilitate spindle relocation (Chaigne et al. 2013). Oocytes in which the Arp2/3 complex is inhibited by drug treatment have a thinner cortex and often divide symmetrically. Interfering with cortical plasticity by artificially stiffening or softening the cortex leads to symmetric divisions



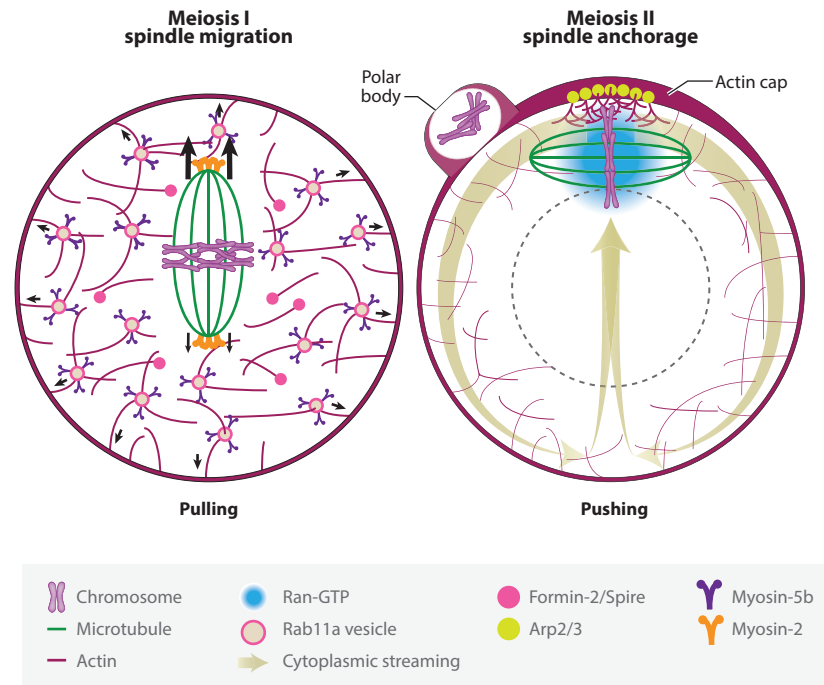


Figure 6

Asymmetric spindle positioning in mouse oocytes. Spindle relocation to the oocyte surface relies on two actin motors, Myosin-5b and Myosin-2. Myosin-5b is required for network dynamics and thus supports spindle migration. Spindle relocation may also be promoted by the Myosin-5b-dependent outward-directed transport of vesicles and their associated actin filaments. Maintenance of the meiosis II spindle at the oocyte cortex relies on recruitment and activation of the Arp2/3 complex by a Ran-GTP gradient that forms around the chromosomes. An actin flow generated by Arp2/3 may translate into cytoplasmic streaming that pushes the spindle toward the cortex.

(Chaigne et al. 2013). This finding suggests that, to support spindle positioning, cortical softness needs to be fine tuned (Chaigne et al. 2015).

4.5. Spindle Positioning During Meiosis II in Mouse Oocytes

In meiosis II, the spindle is anchored and oriented parallel to the egg's surface. It rotates into a radial position upon activation or fertilization before extrusion of the second polar body (Liu et al. 2000, Maro et al. 1984). Spindle anchorage is controlled by the Arp2/3 complex, a nucleator of branched actin filaments (Figure 6); drug-mediated inhibition of Arp2/3 leads to spindle detachment from the cortex (Yi et al. 2011). Rotation of the spindle also relies on an intact actin cytoskeleton (Maro et al. 1984, Zhu et al. 2003), but the precise underlying mechanisms are still largely unclear.

The activity of the Arp2/3 complex is dependent on nucleation-promoting factors, whose activation in turn depends on upstream signals, such as small GTPases (Rotty et al. 2013). Likewise, in meiosis, local recruitment and activation of the Arp2/3 complex in the actin cap, an actin-enriched zone in the cortex, are induced by chromosomes in a nucleation-promoting factor-dependent and Ran-dependent manner (discussed below) (Sun et al. 2011; Yi et al. 2011, 2013). Specifically, a dominant-negative variant of the nucleation-promoting factor N-WASP (neuronal

Wiskott-Aldrich syndrome protein) causes the spindle to detach from the cortex in meiosis II, demonstrating that Arp2/3 activity at the actin cap can be regulated by N-WASP (Yi et al. 2011). However, this observation could not be reproduced in oocytes obtained from *N-WASP*^{-/-} mice (Wang et al. 2016), possibly due to redundant mechanisms of promoting actin nucleation by Arp2/3. For example, WAVE2 (Wiskott-Aldrich syndrome protein family member 2), another nucleation-promoting factor, has also been shown to control Arp2/3 activation at the cortex during meiosis I (Chaigne et al. 2013). Thus, the exact molecular details of Arp2/3 regulation in spindle anchorage remain elusive.

Arp2/3 and nucleation-promoting factors such as N-WASP localize to the actin cap and nucleate branched actin filaments (**Figure 6**). This nucleation activity is proposed to generate an actin flow that streams away from the cortical cap along the cell periphery and that converges at the opposite side of the cell before circulating back toward the oocyte center. This actin flow has been suggested to translate into cytoplasmic streaming that pushes the spindle toward the cortex (**Figure 6**) (Yi et al. 2011, 2013). Upon Arp2/3 inhibition, the direction of cytoplasmic streaming is reversed and pushes the spindle away from the cortex (Yi et al. 2011). When Arp2/3 function and Myosin-2 function are simultaneously blocked, cytoplasmic streaming is abolished, and the spindle remains at the cortex (Yi et al. 2011). Consistently, spindle anchorage is not affected by depolymerization of actin with the drug Latrunculin A, which renders Arp2/3 and Myosin-2 inactive. This finding suggests that Arp2/3 may maintain the meiotic spindle at the cortex by counteracting or preventing Myosin-2-driven contractions that push the spindle toward the oocyte center.

4.6. Cortical Polarization During Asymmetric Division

Asymmetric spindle positioning in many cell types depends on a polarized cortex, which interacts differentially with astral microtubules that are emanating from the two spindle poles (Cowan & Hyman 2004). Cortical polarity also plays an important role during meiosis in many animal oocytes. For example, in starfish and frogs, the oocyte nucleus is positioned at the future animal pole through pulling forces exerted by microtubules that extend from the cortex (Gard 1993; Miyazaki et al. 2000, 2005). In flies, MTOCs are concentrated at the posterior cortex and push the nucleus toward the anterior pole (Zhao et al. 2012).

In contrast, mammalian oocytes are generally thought to be unpolarized before meiosis resumes, and the polarity of the egg is not thought to determine the axis of the embryo (reviewed in Johnson 2009).

4.6.1. Chromosome-mediated formation of the actin cap. The first sign of cortical polarization in mouse oocytes is the appearance of the actin cap, which forms as the spindle moves toward the oocyte cortex and is conserved from invertebrates to mammals (Gard et al. 1995, Kim et al. 2000, Sardet et al. 1992, Sun et al. 2001). Cortical polarization in mouse oocytes is likely to serve several different functions, including preparation of the cell surface for polar body extrusion, anchorage of the metaphase II spindle, and prevention of sperm binding in the region of the metaphase II spindle. The contribution of cortical polarization to polar body extrusion is not discussed here and is summarized elsewhere (Maddox et al. 2012).

The formation of the actin cap coincides with spindle migration: When the chromosomes come closer to the cortex during meiosis I, actin becomes enriched in the cortical region that is proximal to the chromosomes (Deng et al. 2007, Longo & Chen 1985, Yi et al. 2013). Cortical polarization is mediated by chromosomes because DNA-coated beads are sufficient to induce actin cap formation (Deng et al. 2007). The small GTPase Ran concentrates and forms a gradient around meiotic chromosomes (Dumont et al. 2007b) and is required to form the actin cap (**Figure 6**)



(Deng et al. 2007). Ran-GTP mediates the formation of the actin cap by driving the local recruitment and activation of Arp2/3 via N-WASP (Yi et al. 2011). The actin cap is therefore maintained by a positive feedback loop: The chromosomes induce cortical polarization, which in turn will push the chromosomes closer to the cortex and help to maintain the actin cap (Yi et al. 2011, 2013). The dependence of the actin cap on Ran-GTP may also explain why metaphase II spindles detach from the cortex when Ran is inhibited (Yi et al. 2013).

Actin cap formation and spindle anchorage during meiosis II do not depend only on Ran. For example, Arp2/3 activity is also controlled by the Mos-MAPK pathway via WAVE2 (Chaigne et al. 2013, Deng et al. 2007). Blocking MAPK function leads to disappearance of the actin cap above peripheral chromosomes (Deng et al. 2005). Consistently, DNA beads fail to induce the actin cap in *Mos*^{-/-} oocytes (Deng et al. 2007). Thus, Mos-MAPK and Ran pathways work in parallel to promote Arp2/3-mediated formation of the actin cap.

Furthermore, as visualized by fluorescent probes of active GTPases, active Cdc42, and Rac, members of the Rho family of GTPases accumulate at the actin cap in a Ran-GTP-dependent manner (Dehapiot et al. 2013, Halet & Carroll 2007). Similarly to Ran, dominant-negative Cdc42 inhibition results in loss of the actin cap, probably due to N-WASP delocalization and consequently Arp2/3 deactivation (Dehapiot et al. 2013, Yi et al. 2011). In agreement, *Cdc42*^{-/-} mouse oocytes lack cortical polarization despite normal spindle migration in meiosis I (Wang et al. 2013). Thus, Cdc42 is a downstream effector of Ran and functions upstream of Arp2/3 activation.

Another study suggested that Cdc42 might also contribute to spindle positioning during meiosis I: Cdc42 inhibition by a dominant-negative variant led to failure in spindle migration (Na & Zernicka-Goetz 2006). However, this role of Cdc42 in spindle migration could not be confirmed in a subsequent study that showed spindle migration was unaffected in *Cdc42*^{-/-} oocytes (Wang et al. 2013). This discrepancy may be explained by the use of different techniques in these studies for interfering with Cdc42 function. The effect of Cdc42 depletion in *Cdc42*^{-/-} oocytes may have been masked by redundant pathways. Further methods of acute protein inhibition or depletion are needed to investigate a potential involvement of Cdc42 in spindle migration.

Although required for spindle anchoring, the actin cap alone is not sufficient to maintain the spindle at the cortex: Dominant-negative Rac inhibition detaches the meiosis II spindle from the cortex without disrupting the actin cap (Halet & Carroll 2007). Importantly, cortical Myosin-2 is lost in cultured cells expressing constitutively active Rac (van Leeuwen et al. 1999). On the basis of these data, it can be speculated that Rac activity helps to displace cortical Myosin-2, which is proposed to counteract Arp2/3-driven cytoplasmic streaming (Yi et al. 2011).

4.6.2. Cortical polarization prevents premature sperm-egg DNA interactions. Unpolarized mouse oocytes are covered homogeneously with membrane microvilli that promote sperm-egg binding and fusion (Runge et al. 2007). Cortical polarization is accompanied by loss of membrane microvilli at the actin cap (Longo & Chen 1985). Such loss probably prevents sperm entry near the oocyte spindle; such prevention is necessary to avoid sperm DNA being captured by spindle microtubules and extruded into the second polar body (Luo et al. 2009).

In mouse oocytes, proteins of the ERM (Ezrin-Radixin-Moesin) family are required for the assembly and maintenance of microvilli (Yonemura et al. 1999). Active forms of ERM proteins localize to the oocyte cortex but are gradually excluded from the region above the approaching spindle, thereby creating a microvilli-free zone (Dehapiot & Halet 2013, Larson et al. 2010). A homogeneous distribution of active ERM at the cortex is observed after Ran inhibition (Dehapiot & Halet 2013). This finding indicates that Ran-GTP-mediated polarization is required for the disassembly of microvilli at the actin cap, which is essential for preventing sperm entry near the oocyte spindle.



The mechanisms that prevent a clash between the sperm and the spindle of the egg have been characterized particularly well in *Caenorhabditis elegans*. In this system, the oocyte must not only prevent sperm entry in the vicinity of the oocyte's spindle apparatus but also avoid capture of the oocyte spindle by the sperm-associated microtubule aster (McNally et al. 2010, 2012). To achieve these goals, Kinesin-1 relocates the oocyte nucleus away from the future sperm entry site prior to NEBD. In addition, Kinesin-1 prevents premature assembly of centrosomes from sperm centrioles and astral microtubule nucleation after fertilization. While relocation probably depends on Kinesin-1's motor activity (McNally et al. 2010), prevention of premature centrosome assembly relies on a Kinesin-1 shell that forms around the sperm centrioles and blocks recruitment of maternal pericentriolar proteins (McNally et al. 2012). Interestingly, actin was recently shown to tether sperm DNA at the posterior pole, away from the oocyte spindle (Panzica et al. 2017). Here, cortical actin directly associates with sperm components to shield sperm chromosomes. This interaction prevents the premature capture of oocyte chromosomes by sperm aster microtubules.

Sperm asters have also been detected in zygotes of some mammals, including humans (Schatten & Sun 2011), raising the question whether similar mechanisms exist in these species that prevent the premature interaction between maternal and paternal structures. Interestingly, actin plays a converse role in mouse zygotes, where it promotes the unification of the male and female pronuclei in the center of the cell (Chaigne et al. 2016). The actin-dependent centration of pronuclei has also been proposed to rely on the vesicle dynamics that position the oocyte nucleus and the spindle in meiosis I (Figures 5 and 6). Thus, actin-dependent mechanisms play multiple crucial roles at the transitions between symmetric and asymmetric divisions in mouse oocytes and zygotes.

5. PERSPECTIVE

Recent years have seen significant conceptual advances in the field of female meiosis research. Advanced microscopy technologies have allowed for identification of aMTOCs as major drivers of spindle assembly in mouse oocytes (Schuh & Ellenberg 2007) and tracking of kinetochores at unprecedented resolution (Kitajima et al. 2011). Powerful imaging techniques continue to propel new discoveries that could explain why female meiosis is error prone (Holubcova et al. 2015, Lister et al. 2010, Nakagawa & FitzHarris 2017, Zielinska et al. 2015) as well as which meiosis-specific mechanisms might be in place to prevent aneuploidy in eggs (Mogessie & Schuh 2017). Furthermore, cytogenetics has revealed unconventional principles of chromosome segregation (Ottolini et al. 2015). A clearly emerging picture is that meiosis in mammalian oocytes has even more unique features than previously thought.

Despite these important advances, fundamental questions remain to be answered. The participation of other acentriolar spindle assembly mechanisms such as the Augmin pathway (Goshima & Kimura 2010) is yet to be substantiated in mammalian oocytes. Furthermore, our understanding of how the spindle is assembled in oocytes of nonrodent mammals, including humans, is still very limited. Understanding how spindle microtubules and k-fibers are organized at the structural level may also provide further insights into the error-prone nature of meiosis in oocytes. Indeed, combining live cell imaging with thorough three-dimensional reconstruction of microtubules from electron tomograms has recently revealed unexpected k-fiber organization in mitotic spindles of early *C. elegans* embryos (Redemann et al. 2017). That actin promotes faithful chromosome segregation in mouse oocytes also begs the question of whether this function is conserved in oocytes of other mammalian species. This unexpected finding also warrants revisiting another long-standing question that transcends meiosis: Does actin perhaps also play a role in mitotic chromosome segregation in certain cell types (Sandquist et al. 2011)?



The finding that sister kinetochores are predominantly split in human oocytes opens a new avenue for mechanistic studies of aneuploidy in mammalian eggs. How does the meiotic spindle cope with rotated and twisted bivalents during chromosome segregation?

Finally, understanding the molecular details of meiosis in mammalian oocytes demands efficient and acute protein depletion tools. RNA interference methods suitable for depletion of proteins at early stages of oocyte development are now established (Pfender et al. 2015). However, a few problems still prevail: Some proteins are stored from even earlier developmental stages, while others are required for oocyte development, thus precluding their functional characterization in meiosis. Innovation of acute protein depletion or inhibition methods such as Trim-Away (Clift et al. 2017) should overcome these challenges. In doing so, it will allow us to effectively address those key questions whose answers constitute a major step forward in our understanding of meiosis in mammalian oocytes.

DISCLOSURE STATEMENT

The authors are not aware of any affiliations, memberships, funding, or financial holdings that might be perceived as affecting the objectivity of this review.

LITERATURE CITED

- Alexandre H, Van Cauwenberge A, Mulnard J. 1989. Involvement of microtubules and microfilaments in the control of the nuclear movement during maturation of mouse oocyte. *Dev. Biol.* 136:311–20
- Almonacid M, Ahmed WW, Bussonnier M, Mailly P, Betz T, et al. 2015. Active diffusion positions the nucleus in mouse oocytes. *Nat. Cell Biol.* 17:470–79
- Azoury J, Lee KW, Georget V, Hikal P, Verlhac MH. 2011. Symmetry breaking in mouse oocytes requires transient F-actin meshwork destabilization. *Development* 138:2903–8
- Azoury J, Lee KW, Georget V, Rassinier P, Leader B, Verlhac MH. 2008. Spindle positioning in mouse oocytes relies on a dynamic meshwork of actin filaments. *Curr. Biol.* 18:1514–19
- Battaglia DE, Goodwin P, Klein NA, Soules MR. 1996a. Influence of maternal age on meiotic spindle assembly in oocytes from naturally cycling women. *Hum. Reprod.* 11:2217–22
- Battaglia DE, Klein NA, Soules MR. 1996b. Changes in centrosomal domains during meiotic maturation in the human oocyte. *Mol. Hum. Reprod.* 2:845–51
- Baumann C, Wang X, Yang L, Viveiros MM. 2017. Error-prone meiotic division and subfertility in mice with oocyte-conditional knockdown of pericentrin. *J. Cell Sci.* 130:1251–62
- Bennabi I, Terret ME, Verlhac MH. 2016. Meiotic spindle assembly and chromosome segregation in oocytes. *J. Cell Biol.* 215:611–19
- Borrego-Pinto J, Somogyi K, Karreman MA, Konig J, Muller-Reichert T, et al. 2016. Distinct mechanisms eliminate mother and daughter centrioles in meiosis of starfish oocytes. *J. Cell Biol.* 212:815–27
- Breuer M, Kolano A, Kwon M, Li CC, Tsai TF, et al. 2010. HURP permits MTOC sorting for robust meiotic spindle bipolarity, similar to extra centrosome clustering in cancer cells. *J. Cell Biol.* 191:1251–60
- Brunet S, Maro B. 2007. Germinal vesicle position and meiotic maturation in mouse oocyte. *Reproduction* 133:1069–72
- Brunet S, Verlhac MH. 2011. Positioning to get out of meiosis: the asymmetry of division. *Hum. Reprod. Update* 17:68–75
- Bury L, Coelho PA, Simeone A, Ferries S, Evers CE, et al. 2017. Plk4 and Aurora A cooperate in the initiation of acentriolar spindle assembly in mammalian oocytes. *J. Cell Biol.* 216:3571–90
- Capalbo A, Hoffmann ER, Cimadomo D, Maria Ubaldi F, Rienzi L. 2017. Human female meiosis revised: new insights into the mechanisms of chromosome segregation and aneuploidies from advanced genomics and time-lapse imaging. *Hum. Reprod. Update* 23:706–22
- Carabatsos MJ, Combelles CM, Messinger SM, Albertini DF. 2000. Sorting and reorganization of centrosomes during oocyte maturation in the mouse. *Microsc. Res. Tech.* 49:435–44



- Carazo-Salas RE, Guarguaglini G, Gruss OJ, Segref A, Karsenti E, Mattaj IW. 1999. Generation of GTP-bound Ran by RCC1 is required for chromatin-induced mitotic spindle formation. *Nature* 400:178–81
- Chaigne A, Campillo C, Gov NS, Voituriez R, Azoury J, et al. 2013. A soft cortex is essential for asymmetric spindle positioning in mouse oocytes. *Nat. Cell Biol.* 15:958–66
- Chaigne A, Campillo C, Gov NS, Voituriez R, Sykes C, et al. 2015. A narrow window of cortical tension guides asymmetric spindle positioning in the mouse oocyte. *Nat. Commun.* 6:6027
- Chaigne A, Campillo C, Voituriez R, Gov NS, Sykes C, et al. 2016. F-actin mechanics control spindle centring in the mouse zygote. *Nat. Commun.* 7:10253
- Cheeseman IM, Desai A. 2008. Molecular architecture of the kinetochore-microtubule interface. *Nat. Rev. Mol. Cell Biol.* 9:33–46
- Clarke PR, Zhang C. 2008. Spatial and temporal coordination of mitosis by Ran GTPase. *Nat. Rev. Mol. Cell Biol.* 9:464–77
- Clift D, McEwan WA, Labzin LI, Konieczny V, Mogessie B, et al. 2017. A method for the acute and rapid degradation of endogenous proteins. *Cell* 172:1692–706
- Clift D, Schuh M. 2015. A three-step MTOC fragmentation mechanism facilitates bipolar spindle assembly in mouse oocytes. *Nat. Commun.* 6:7217
- Connolly AA, Sugioika K, Chuang CH, Lowry JB, Bowerman B. 2015. KLP-7 acts through the Ndc80 complex to limit pole number in *C. elegans* oocyte meiotic spindle assembly. *J. Cell Biol.* 210:917–32
- Corbett KD, Yip CK, Ee LS, Walz T, Amon A, Harrison SC. 2010. The monopolin complex crosslinks kinetochore components to regulate chromosome-microtubule attachments. *Cell* 142:556–67
- Courtois A, Schuh M, Ellenberg J, Hiiragi T. 2012. The transition from meiotic to mitotic spindle assembly is gradual during early mammalian development. *J. Cell Biol.* 198:357–70
- Cowan CR, Hyman AA. 2004. Asymmetric cell division in *C. elegans*: cortical polarity and spindle positioning. *Annu. Rev. Cell Dev. Biol.* 20:427–53
- Dehapiot B, Carriere V, Carroll J, Halet G. 2013. Polarized Cdc42 activation promotes polar body protrusion and asymmetric division in mouse oocytes. *Dev. Biol.* 377:202–12
- Dehapiot B, Halet G. 2013. Ran GTPase promotes oocyte polarization by regulating ERM (Ezrin/Radixin/Moesin) inactivation. *Cell Cycle* 12:1672–78
- Deng M, Suraneni P, Schultz RM, Li R. 2007. The Ran GTPase mediates chromatin signaling to control cortical polarity during polar body extrusion in mouse oocytes. *Dev. Cell* 12:301–8
- Deng M, Williams CJ, Schultz RM. 2005. Role of MAP kinase and myosin light chain kinase in chromosome-induced development of mouse egg polarity. *Dev. Biol.* 278:358–66
- Dumont J, Million K, Sunderland K, Rassiner P, Lim H, et al. 2007a. Formin-2 is required for spindle migration and for the late steps of cytokinesis in mouse oocytes. *Dev. Biol.* 301:254–65
- Dumont J, Petri S, Pellegrin F, Terret ME, Bohnsack MT, et al. 2007b. A centriole- and RanGTP-independent spindle assembly pathway in meiosis I of vertebrate oocytes. *J. Cell Biol.* 176:295–305
- FitzHarris G. 2012. Anaphase B precedes anaphase A in the mouse egg. *Curr. Biol.* 22:437–44
- Forer A, Pickett-Heaps JD. 1998. Cytochalasin D and latrunculin affect chromosome behaviour during meiosis in crane-fly spermatocytes. *Chromosome Res.* 6:533–49
- Ganem NJ, Godinho SA, Pellman D. 2009. A mechanism linking extra centrosomes to chromosomal instability. *Nature* 460:278–82
- Gard DL. 1992. Microtubule organization during maturation of *Xenopus* oocytes: assembly and rotation of the meiotic spindles. *Dev. Biol.* 151:516–30
- Gard DL. 1993. Ectopic spindle assembly during maturation of *Xenopus* oocytes: evidence for functional polarization of the oocyte cortex. *Dev. Biol.* 159:298–310
- Gard DL, Cha BJ, Roeder AD. 1995. F-actin is required for spindle anchoring and rotation in *Xenopus* oocytes: a re-examination of the effects of cytochalasin B on oocyte maturation. *Zygote* 3:17–26
- George MA, Pickering SJ, Braude PR, Johnson MH. 1996. The distribution of alpha- and gamma-tubulin in fresh and aged human and mouse oocytes exposed to cryoprotectant. *Mol. Hum. Reprod.* 2:445–56
- Goshima G, Kimura A. 2010. New look inside the spindle: microtubule-dependent microtubule generation within the spindle. *Curr. Opin. Cell Biol.* 22:44–49
- Gueth-Hallonet C, Antony C, Aghion J, Santa-Maria A, Lajoie-Mazenc I, et al. 1993. γ -Tubulin is present in acentrilolar MTOCs during early mouse development. *J. Cell Sci.* 105(Pt 1):157–66



- Halet G, Carroll J. 2007. Rac activity is polarized and regulates meiotic spindle stability and anchoring in mammalian oocytes. *Dev. Cell* 12:309–17
- Halpin D, Kalab P, Wang J, Weis K, Heald R. 2011. Mitotic spindle assembly around RCC1-coated beads in *Xenopus* egg extracts. *PLoS Biol.* 9:e1001225
- Hassold T, Hunt P. 2001. To err (meiotically) is human: the genesis of human aneuploidy. *Nat. Rev. Genet.* 2:280–91
- Heald R, Tournebise R, Blank T, Sandaltzopoulos R, Becker P, et al. 1996. Self-organization of microtubules into bipolar spindles around artificial chromosomes in *Xenopus* egg extracts. *Nature* 382:420–25
- Herbert M, Kalleas D, Cooney D, Lamb M, Lister L. 2015. Meiosis and maternal aging: insights from aneuploid oocytes and trisomy births. *Cold Spring Harb. Perspect. Biol.* 7:a017970
- Hertig AT, Adams EC. 1967. Studies on the human oocyte and its follicle. I. Ultrastructural and histochemical observations on the primordial follicle stage. *J. Cell Biol.* 34:647–75
- Holubcova Z, Blayney M, Elder K, Schuh M. 2015. Error-prone chromosome-mediated spindle assembly favors chromosome segregation defects in human oocytes. *Science* 348:1143–47
- Holubcova Z, Howard G, Schuh M. 2013. Vesicles modulate an actin network for asymmetric spindle positioning. *Nat. Cell Biol.* 15:937–47
- Johnson MH. 2009. From mouse egg to mouse embryo: polarities, axes, and tissues. *Annu. Rev. Cell Dev. Biol.* 25:483–512
- Kalab P, Pralle A, Isacoff EY, Heald R, Weis K. 2006. Analysis of a RanGTP-regulated gradient in mitotic somatic cells. *Nature* 440:697–701
- Kim J, Ishiguro K, Nambu A, Akiyoshi B, Yokobayashi S, et al. 2015. Meikin is a conserved regulator of meiosis-I-specific kinetochore function. *Nature* 517:466–71
- Kim NH, Cho SK, Choi SH, Kim EY, Park SP, Lim JH. 2000. The distribution and requirements of microtubules and microfilaments in bovine oocytes during in vitro maturation. *Zygote* 8:25–32
- Kitajima TS, Ohsugi M, Ellenberg J. 2011. Complete kinetochore tracking reveals error-prone homologous chromosome biorientation in mammalian oocytes. *Cell* 146:568–81
- Koffa MD, Casanova CM, Santarella R, Kocher T, Wilm M, Mattaj JW. 2006. HURP is part of a Ran-dependent complex involved in spindle formation. *Curr. Biol.* 16:743–54
- Kolano A, Brunet S, Silk AD, Cleveland DW, Verlhac MH. 2012. Error-prone mammalian female meiosis from silencing the spindle assembly checkpoint without normal interkinetochore tension. *PNAS* 109:E1858–67
- Kotak S, Gönczy P. 2013. Mechanisms of spindle positioning: cortical force generators in the limelight. *Curr. Opin. Cell Biol.* 25:741–48
- Kubiak J, Paldi A, Weber M, Maro B. 1991. Genetically identical parthenogenetic mouse embryos produced by inhibition of the first meiotic cleavage with cytochalasin D. *Development* 111:763–69
- Larson SM, Lee HJ, Hung PH, Matthews LM, Robinson DN, Evans JP. 2010. Cortical mechanics and meiosis II completion in mammalian oocytes are mediated by myosin-II and Ezrin-Radixin-Moesin (ERM) proteins. *Mol. Biol. Cell* 21:3182–92
- Lenart P, Bacher CP, Daigle N, Hand AR, Eils R, et al. 2005. A contractile nuclear actin network drives chromosome congression in oocytes. *Nature* 436:812–18
- Li L, Zheng P, Dean J. 2010. Maternal control of early mouse development. *Development* 137:859–70
- Li X, Dawe RK. 2009. Fused sister kinetochores initiate the reductional division in meiosis I. *Nat. Cell Biol.* 11:1103–8
- Lister LM, Kouznetsova A, Hyslop LA, Kalleas D, Pace SL, et al. 2010. Age-related meiotic segregation errors in mammalian oocytes are preceded by depletion of cohesin and Sgo2. *Curr. Biol.* 20:1511–21
- Liu L, Trimarchi JR, Oldenbourg R, Keefe DL. 2000. Increased birefringence in the meiotic spindle provides a new marker for the onset of activation in living oocytes. *Biol. Reprod.* 63:251–58
- Longo FJ, Chen DY. 1985. Development of cortical polarity in mouse eggs: involvement of the meiotic apparatus. *Dev. Biol.* 107:382–94
- Luksza M, Queguigner I, Verlhac MH, Brunet S. 2013. Rebuilding MTOCs upon centriole loss during mouse oogenesis. *Dev. Biol.* 382:48–56
- Luo J, McGinnis LK, Kinsey WH. 2009. Fyn kinase activity is required for normal organization and functional polarity of the mouse oocyte cortex. *Mol. Reprod. Dev.* 76:819–31



- Ma W, Baumann C, Viveiros MM. 2010. NEDD1 is crucial for meiotic spindle stability and accurate chromosome segregation in mammalian oocytes. *Dev. Biol.* 339:439–50
- Maddox AS, Azoury J, Dumont J. 2012. Polar body cytokinesis. *Cytoskeleton* 69:855–68
- Maiato H, DeLuca J, Salmon ED, Earnshaw WC. 2004. The dynamic kinetochore-microtubule interface. *J. Cell Sci.* 117:5461–77
- Manandhar G, Schatten H, Sutovsky P. 2005. Centrosome reduction during gametogenesis and its significance. *Biol. Reprod.* 72:2–13
- Maresca TJ, Groen AC, Gatlin JC, Ohi R, Mitchison TJ, Salmon ED. 2009. Spindle assembly in the absence of a RanGTP gradient requires localized CPC activity. *Curr. Biol.* 19:1210–15
- Maro B, Howlett SK, Webb M. 1985. Non-spindle microtubule organizing centers in metaphase II-arrested mouse oocytes. *J. Cell Biol.* 101:1665–72
- Maro B, Johnson MH, Pickering SJ, Flach G. 1984. Changes in actin distribution during fertilization of the mouse egg. *J. Embryol. Exp. Morphol.* 81:211–37
- McNally KL, Fabritius AS, Ellefson ML, Flynn JR, Milan JA, McNally FJ. 2012. Kinesin-1 prevents capture of the oocyte meiotic spindle by the sperm aster. *Dev. Cell* 22:788–98
- McNally KL, Martin JL, Ellefson M, McNally FJ. 2010. Kinesin-dependent transport results in polarized migration of the nucleus in oocytes and inward movement of yolk granules in meiotic embryos. *Dev. Biol.* 339:126–40
- Merdes A, Ramyar K, Vechio JD, Cleveland DW. 1996. A complex of NuMA and cytoplasmic dynein is essential for mitotic spindle assembly. *Cell* 87:447–58
- Mikeladze-Dvali T, von Tobel L, Strnad P, Knott G, Leonhardt H, et al. 2012. Analysis of centriole elimination during *C. elegans* oogenesis. *Development* 139:1670–79
- Miyazaki A, Kamitsubo E, Nemoto SI. 2000. Premeiotic aster as a device to anchor the germinal vesicle to the cell surface of the presumptive animal pole in starfish oocytes. *Dev. Biol.* 218:161–71
- Miyazaki A, Kato KH, Nemoto S. 2005. Role of microtubules and centrosomes in the eccentric relocation of the germinal vesicle upon meiosis reinitiation in sea-cucumber oocytes. *Dev. Biol.* 280:237–47
- Mogessie B, Schuh M. 2017. Actin protects mammalian eggs against chromosome segregation errors. *Science* 357:eaal1647
- Na J, Zernicka-Goetz M. 2006. Asymmetric positioning and organization of the meiotic spindle of mouse oocytes requires CDC42 function. *Curr. Biol.* 16:1249–54
- Nagaoka SI, Hassold TJ, Hunt PA. 2012. Human aneuploidy: mechanisms and new insights into an age-old problem. *Nat. Rev. Genet.* 13:493–504
- Nakagawa S, FitzHarris G. 2017. Intrinsically defective microtubule dynamics contribute to age-related chromosome segregation errors in mouse oocyte meiosis-I. *Curr. Biol.* 27:1040–47
- Ottolini CS, Newnham L, Capalbo A, Natesan SA, Joshi HA, et al. 2015. Genome-wide maps of recombination and chromosome segregation in human oocytes and embryos show selection for maternal recombination rates. *Nat. Genet.* 47:727–35
- Panzica MT, Marin HC, Reymann AC, McNally FJ. 2017. F-actin prevents interaction between sperm DNA and the oocyte meiotic spindle in *C. elegans*. *J. Cell Biol.* 216:2273–82
- Patel J, Tan SL, Hartshorne GM, McAinsh AD. 2015. Unique geometry of sister kinetochores in human oocytes during meiosis I may explain maternal age-associated increases in chromosomal abnormalities. *Biol. Open* 5:178–84
- Petry S. 2016. Mechanisms of mitotic spindle assembly. *Annu. Rev. Biochem.* 85:659–83
- Pfender S, Kuznetsov V, Pasternak M, Tischer T, Santhanam B, Schuh M. 2015. Live imaging RNAi screen reveals genes essential for meiosis in mammalian oocytes. *Nature* 524:239–42
- Pfender S, Kuznetsov V, Pleiser S, Kerkhoff E, Schuh M. 2011. Spire-type actin nucleators cooperate with Formin-2 to drive asymmetric oocyte division. *Curr. Biol.* 21:955–60
- Pickering SJ, Johnson MH, Braude PR, Houliston E. 1988. Cytoskeletal organization in fresh, aged and spontaneously activated human oocytes. *Hum. Reprod.* 3:978–89
- Pimenta-Marques A, Bento I, Lopes CA, Duarte P, Jana SC, Bettencourt-Dias M. 2016. A mechanism for the elimination of the female gamete centrosome in *Drosophila melanogaster*. *Science* 353:aaf4866
- Prosser SL, Pelletier L. 2017. Mitotic spindle assembly in animal cells: a fine balancing act. *Nat. Rev. Mol. Cell Biol.* 18:187–201



- Redemann S, Baumgart J, Lindow N, Shelley M, Nazockdast E, et al. 2017. *C. elegans* chromosomes connect to centrosomes by anchoring into the spindle network. *Nat. Commun.* 8:15288
- Rotty JD, Wu C, Bear JE. 2013. New insights into the regulation and cellular functions of the ARP2/3 complex. *Nat. Rev. Mol. Cell Biol.* 14:7–12
- Runge KE, Evans JE, He ZY, Gupta S, McDonald KL, et al. 2007. Oocyte CD9 is enriched on the microvillar membrane and required for normal microvillar shape and distribution. *Dev. Biol.* 304:317–25
- Sakakibara Y, Hashimoto S, Nakaoka Y, Kouznetsova A, Hoog C, Kitajima TS. 2015. Bivalent separation into univalents precedes age-related meiosis I errors in oocytes. *Nat. Commun.* 6:7550
- Sandquist JC, Kita AM, Bement WM. 2011. And the dead shall rise: Actin and myosin return to the spindle. *Dev. Cell* 21:410–19
- Sarangapani KK, Duro E, Deng Y, Alves Fde L, Ye Q, et al. 2014. Sister kinetochores are mechanically fused during meiosis I in yeast. *Science* 346:248–51
- Sardet C, Speksnijder J, Terasaki M, Chang P. 1992. Polarity of the ascidian egg cortex before fertilization. *Development* 115:221–37
- Sathananthan AH, Selvaraj K, Girijashankar ML, Ganesh V, Selvaraj P, Trounson AO. 2006. From oogonia to mature oocytes: inactivation of the maternal centrosome in humans. *Microsc. Res. Tech.* 69:396–407
- Schatten H, Sun QY. 2011. New insights into the role of centrosomes in mammalian fertilization and implications for ART. *Reproduction* 142:793–801
- Schmerler S, Wessel GM. 2011. Polar bodies—more a lack of understanding than a lack of respect. *Mol. Reprod. Dev.* 78:3–8
- Schuh M. 2011. An actin-dependent mechanism for long-range vesicle transport. *Nat. Cell Biol.* 13:1431–36
- Schuh M, Ellenberg J. 2007. Self-organization of MTOCs replaces centrosome function during acentrosomal spindle assembly in live mouse oocytes. *Cell* 130:484–98
- Schuh M, Ellenberg J. 2008. A new model for asymmetric spindle positioning in mouse oocytes. *Curr. Biol.* 18:1986–92
- Severson AF, von Dassow G, Bowerman B. 2016. Oocyte meiotic spindle assembly and function. *Curr. Top. Dev. Biol.* 116:65–98
- Shomper M, Lappa C, FitzHarris G. 2014. Kinetochores microtubule establishment is defective in oocytes from aged mice. *Cell Cycle* 13:1171–79
- Sillje HH, Nagel S, Korner R, Nigg EA. 2006. HURP is a Ran-importin beta-regulated protein that stabilizes kinetochore microtubules in the vicinity of chromosomes. *Curr. Biol.* 16:731–42
- Silverman-Gavrila RV, Forer A. 2000. Evidence that actin and myosin are involved in the poleward flux of tubulin in metaphase kinetochore microtubules of crane-fly spermatocytes. *J. Cell Sci.* 113(Pt 4):597–609
- Simerly C, Nowak G, de Lanerolle P, Schatten G. 1998. Differential expression and functions of cortical myosin IIA and IIB isoforms during meiotic maturation, fertilization, and mitosis in mouse oocytes and embryos. *Mol. Biol. Cell* 9:2509–25
- Skold HN, Komma DJ, Endow SA. 2005. Assembly pathway of the anastral *Drosophila* oocyte meiosis I spindle. *J. Cell Sci.* 118:1745–55
- Sluder G, Miller FJ, Lewis K, Davison ED, Rieder CL. 1989. Centrosome inheritance in starfish zygotes: selective loss of the maternal centrosome after fertilization. *Dev. Biol.* 131:567–79
- Staiger CJ, Cande WZ. 1991. Microfilament distribution in maize meiotic mutants correlates with microtubule organization. *Plant Cell* 3:637–44
- Sun QY, Lai L, Park KW, Kuhholzer B, Prather RS, Schatten H. 2001. Dynamic events are differently mediated by microfilaments, microtubules, and mitogen-activated protein kinase during porcine oocyte maturation and fertilization in vitro. *Biol. Reprod.* 64:879–89
- Sun SC, Wang ZB, Xu YN, Lee SE, Cui XS, Kim NH. 2011. Arp2/3 complex regulates asymmetric division and cytokinesis in mouse oocytes. *PLoS ONE* 6:e18392
- Szollusi D, Calarco P, Donahue RP. 1972. Absence of centrioles in the first and second meiotic spindles of mouse oocytes. *J. Cell Sci.* 11:521–41
- Van Blerkom J. 1991. Microtubule mediation of cytoplasmic and nuclear maturation during the early stages of resumed meiosis in cultured mouse oocytes. *PNAS* 88:5031–35
- van Leeuwen FN, van Delft S, Kain HE, van der Kammen RA, Collard JG. 1999. Rac regulates phosphorylation of the myosin-II heavy chain, actinomyosin disassembly and cell spreading. *Nat. Cell Biol.* 1:242–48



- Verlhac MH, Lefebvre C, Guillaud P, Rassinier P, Maro B. 2000. Asymmetric division in mouse oocytes: with or without Mos. *Curr. Biol.* 10:1303–6
- Vertii A, Hehny H, Doxsey S. 2016. The centrosome, a multitasking renaissance organelle. *Cold Spring Harb. Perspect. Biol.* 8:a025049
- Wang ZB, Jiang ZZ, Zhang QH, Hu MW, Huang L, et al. 2013. Specific deletion of Cdc42 does not affect meiotic spindle organization/migration and homologous chromosome segregation but disrupts polarity establishment and cytokinesis in mouse oocytes. *Mol. Biol. Cell* 24:3832–41
- Wang ZB, Ma XS, Hu MW, Jiang ZZ, Meng TG, et al. 2016. Oocyte-specific deletion of N-WASP does not affect oocyte polarity, but causes failure of meiosis II completion. *Mol. Hum. Reprod.* 22:613–21
- Weber KL, Sokac AM, Berg JS, Cheney RE, Bement WM. 2004. A microtubule-binding myosin required for nuclear anchoring and spindle assembly. *Nature* 431:325–29
- Webster A, Schuh M. 2017. Mechanisms of aneuploidy in human eggs. *Trends Cell Biol.* 27:55–68
- Yi K, Rubinstein B, Unruh JR, Guo F, Slaughter BD, Li R. 2013. Sequential actin-based pushing forces drive meiosis I chromosome migration and symmetry breaking in oocytes. *J. Cell Biol.* 200:567–76
- Yi K, Unruh JR, Deng M, Slaughter BD, Rubinstein B, Li R. 2011. Dynamic maintenance of asymmetric meiotic spindle position through Arp2/3-complex-driven cytoplasmic streaming in mouse oocytes. *Nat. Cell Biol.* 13:1252–58
- Yonemura S, Tsukita S, Tsukita S. 1999. Direct involvement of ezrin/radixin/moesin (ERM)-binding membrane proteins in the organization of microvilli in collaboration with activated ERM proteins. *J. Cell Biol.* 145:1497–509
- Zhao T, Graham OS, Raposo A, St. Johnston D. 2012. Growing microtubules push the oocyte nucleus to polarize the *Drosophila* dorsal-ventral axis. *Science* 336:999–1003
- Zhu ZY, Chen DY, Li JS, Lian L, Lei L, et al. 2003. Rotation of meiotic spindle is controlled by microfilaments in mouse oocytes. *Biol. Reprod.* 68:943–46
- Zielinska AP, Holubcova Z, Blayney M, Elder K, Schuh M. 2015. Sister kinetochore splitting and precocious disintegration of bivalents could explain the maternal age effect. *eLife* 4:e11389

