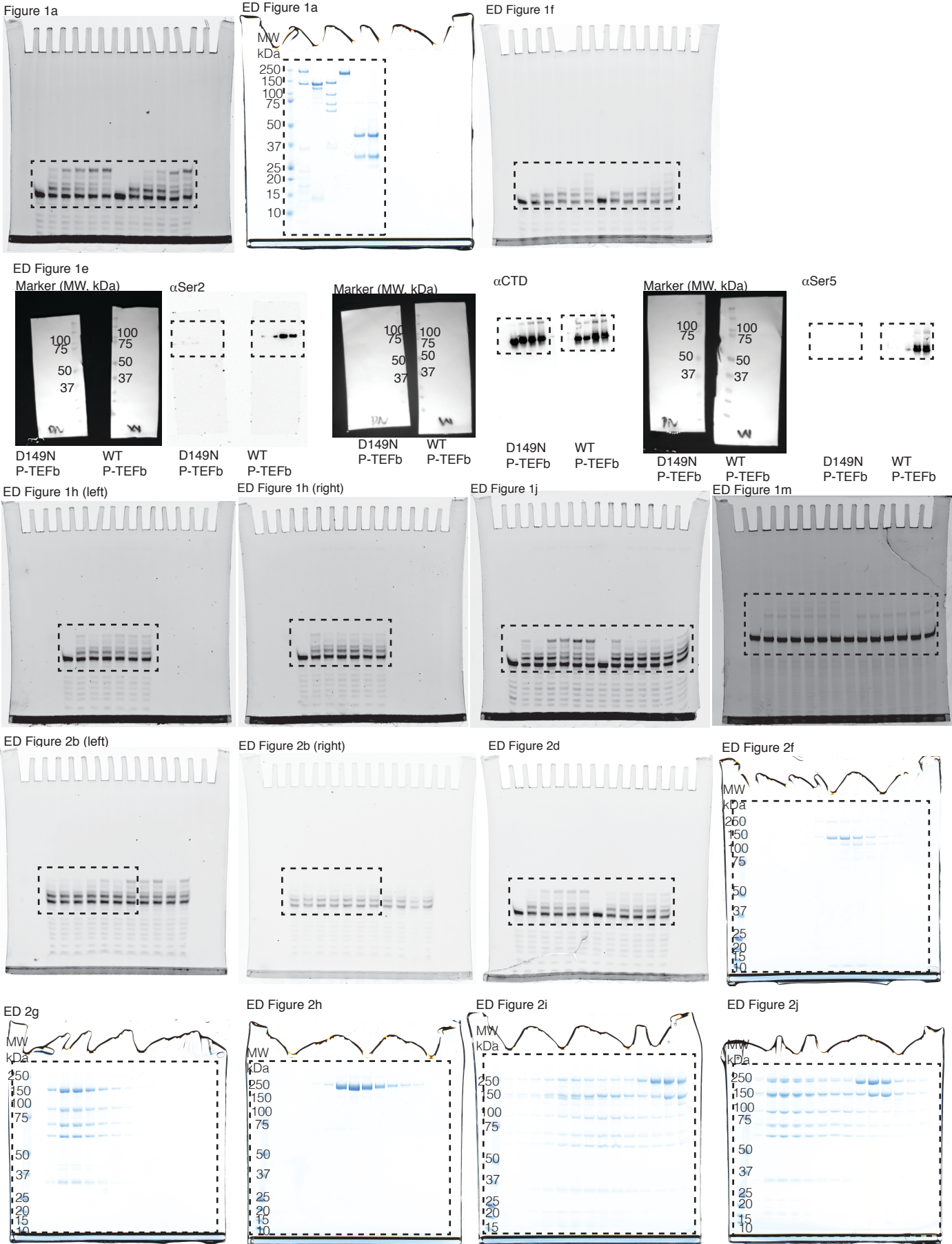


In the format provided by the authors and unedited.

Structure of activated transcription complex Pol II–DSIF–PAF–SPT6

Seychelle M. Vos¹, Lucas Farnung¹, Marc Boehning¹, Christoph Wigge¹, Andreas Linden^{2,3}, Henning Urlaub^{2,3} & Patrick Cramer^{1*}

¹Max Planck Institute for Biophysical Chemistry, Department of Molecular Biology, Göttingen, Germany. ²Max Planck Institute for Biophysical Chemistry, Bioanalytical Mass Spectrometry, Göttingen, Germany. ³University Medical Center Göttingen, Institute of Clinical Chemistry, Bioanalytics Group, Göttingen, Germany. *e-mail: patrick.cramer@mpibpc.mpg.de

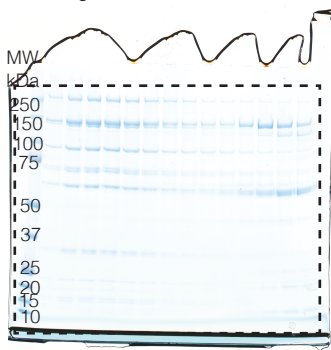


Supplementary Figure 1 | Gel Source data 1.

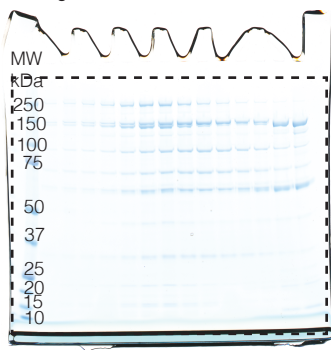
Uncropped gel scans for Figure 1a, and Extended Data Figures 1a, e, f, h, j, m, and 2b, d, f, g, h, i, j.

Size marker is indicated for gels with purified protein. Dotted boxes indicate gel region used for figures.

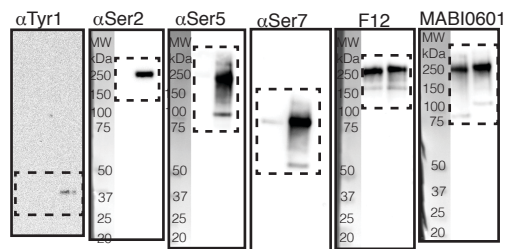
ED Figure 2l



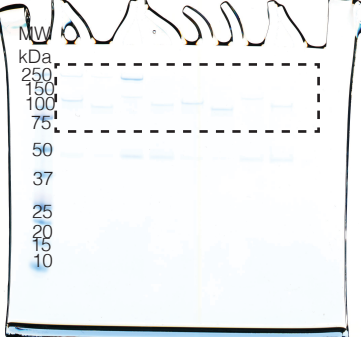
ED Figure 2m



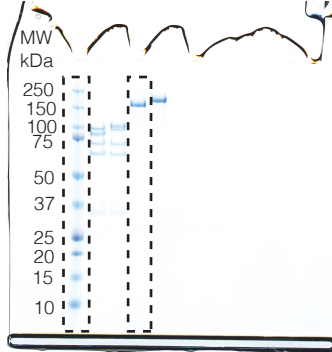
ED Figure 9a



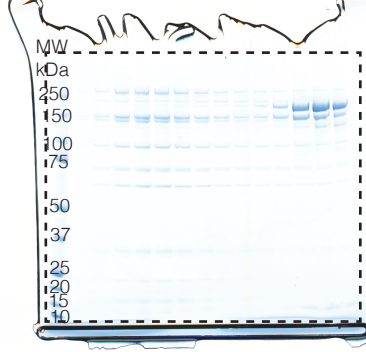
ED Figure 10g



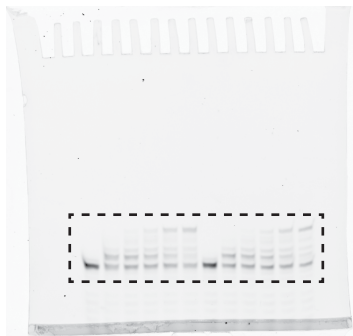
ED Figure 10h



ED Figure 10j



ED Figure 10i



Supplementary Figure 2 | Gel Source data 2.

Uncropped gel scans with size marker indication for Extended Data Figures 2l, m, 9a, and 10g, h, j, i. Size marker is indicated for gels with purified proteins. Dotted boxes indicate gel region used for figures.