

# ARBIL

ARBIL allows users to create the metadata files that you need to include with your corpus/session when you want to upload it with LAMUS

## Requirements:

- a web browser. ARBIL can be found at: <http://www.lat-mpi.eu/tools/arbil/>
- a recent Java Runtime Environment (at least JRE 1.4)

## 1. Starting ARBIL

- Go to the following address: <http://www.lat-mpi.eu/tools/arbil/>
- Click on *Download the latest stable version (webstart)*
- If you're being asked whether you want to open ARBIL with the Web Start Launcher, do so by pressing *Ok*

## 2. Getting your metadata

### *Generating a new corpus/session*

- Select the local corpus
- Right-click on it and select *add -> Unattached Corpus Branch* to make a new Corpus Branch or *add -> Unattached Session* to make a new Session

### *Start working in an existing corpus/session from the server*

- Select the branch or session you want in the Remote Corpus Tree
- Right-click on it and select *Import to Local Corpus*
- Click on *Start*, the metadata files from the server are now being copied to your local corpus. When it's done you should see a confirmation that it processed the Metadata files
- Click on *Close*

## 3. Changing your metadata

### *Edit one corpus session*

- Click on the corpus/session that you just added (in the Local Corpus)
- You should see a window in the top-right corner, this window should contain the fields: IMDI field and Value
- Then it's just a matter of clicking on the cell you want to change and typing in the contents

### *View and edit multiple sessions and corpora at the same time*

- While holding Ctrl, click on the sessions and corpora you want to select
- You should get a Selection window which shows the things you selected with all of its values. The values of the multiple selections can be copied to one another or changed individually, in exactly the same way as how you edit just one corpus/session

## 4. Saving and exporting your metadata

### *Saving*

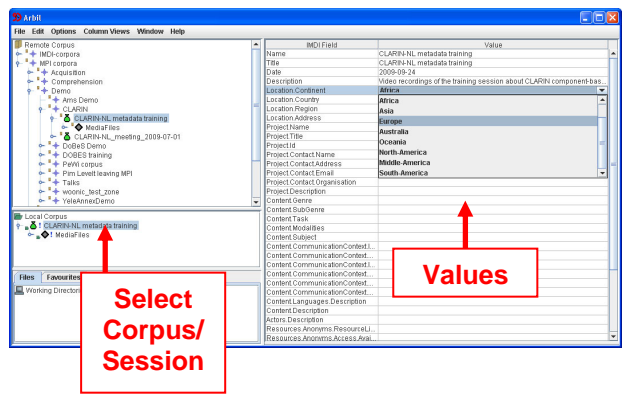
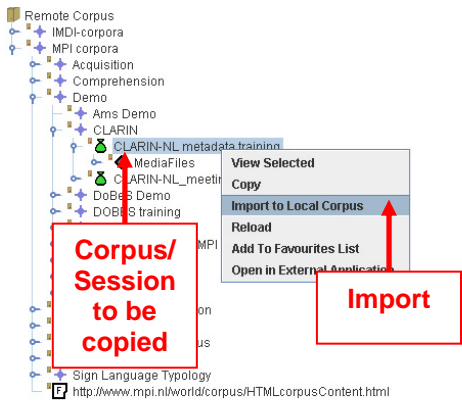
- Right-click on the edited session you want to save and select *Save Changes to Disk*

To get the saved files ready to be uploaded with Lamus you first have to export them

### *Exporting*

- Right-click on the edited session/corpus you want to export and select *Export*
- Provide a location, and click on *Export*. Enter a clear name for the metadata and click *OK*
- Click on *Start*, the exporting process starts when it's done click on *Close*

## 5. An example: - step by step

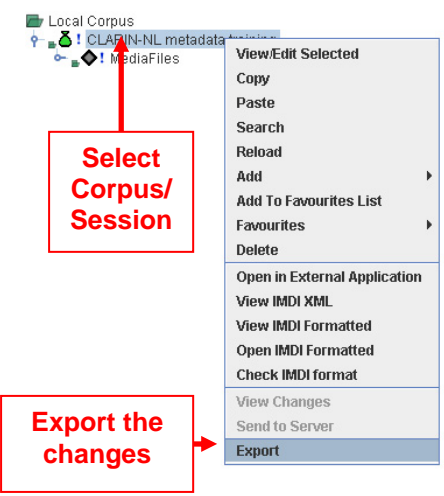
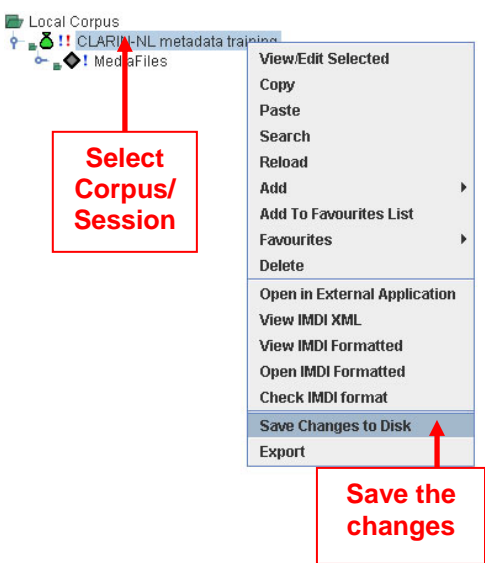


**Step 1:** Right click the session/corpus you want to copy to your Local Corpus and select *Import to Local Corpus*

**Step 2:** To edit a session/corpus you select it in the Local Corpus and then the values are visible on the topright window

To make a new session/corpus right-click on Local Corpus and select *add -> Unattached Corpus Branch* (for a new corpus), *add -> Unattached Session* (for a new session)

These values can now be edited by double clicking on the cells. Or they can be copied to one another



**Step 3:** The values you've changed should have turned blue. To save these changes you should rightclick on the session you're working in and select *Save Changes to Disk*

**Step 4:** To export your changes you have to rightclick on the session/corpus you want to export and click on *Export*

*The exclamation mark in front of the session should now change from red to blue. Indicating that you have saved your changes locally but they are not changed on the server yet*

Now you have to supply a location to save the files to and lastly an export name.

Your files are now ready to be uploaded with Lamus