

Supplement of Atmos. Chem. Phys., 18, 13097–13113, 2018
<https://doi.org/10.5194/acp-18-13097-2018-supplement>
© Author(s) 2018. This work is distributed under
the Creative Commons Attribution 4.0 License.



Supplement of

The climate effects of increasing ocean albedo: an idealized representation of solar geoengineering

Ben Kravitz et al.

Correspondence to: Ben Kravitz (ben.kravitz@pnnl.gov)

The copyright of individual parts of the supplement might differ from the CC BY 4.0 License.

39 **Table S1.** Change in top-of-atmosphere net radiative flux (calculated as a difference
 40 from piControl), averaged over years 11-50. Units are in $W m^{-2}$. In each box, the top
 41 value is the global mean, the middle value is the land mean, and the bottom value is
 42 the ocean mean.
 43

	abrupt4xCO2	G1	G1ocean-Albedo
BNU-ESM	2.70	0.02	0.39
	3.01	1.11	8.68
	2.57	-0.43	-3.10
CanESM2	2.61	0.02	-0.21
	0.91	0.27	7.86
	3.36	-0.10	-3.72
CESM-CAM5.1-FV	2.63	-0.13	-1.43
	3.50	2.09	7.61
	2.27	-1.04	-5.14
CSIRO-Mk3L-1.2	2.63	0.12	0.02
	0.48	0.60	6.40
	3.53	-0.08	-2.64
EC-Earth	2.22	-0.20	-0.20
	0.36	0.04	5.75
	2.20	-0.22	-2.57
GISS-E2-R	2.45	-0.18	-0.05
	-0.71	-1.10	5.06
	3.75	0.21	-2.15
HadGEM2-ES	2.49	0.20	-0.07
	2.96	2.52	10.14
	2.31	-0.74	-4.18
IPSL-CM5A-LR	2.82	0.08	-0.07
	-0.09	0.12	6.65
	4.06	0.07	-2.93
MIROC-ESM	3.62	0.23	0.13
	2.78	-0.47	9.48
	3.63	0.23	0.11
MPI-ESM-LR	2.73	0.16	0.02
	1.28	1.86	8.92
	3.32	-0.53	-3.58
NorESM1-M	2.42	-0.01	-0.10
	3.64	1.49	8.23
	1.92	-0.62	-3.49
Model mean	2.67	0.03	-0.14
	1.65	0.77	7.71
	2.99	-0.30	-3.04

44

45 **Table S2.** Temperature trend for each model over years 11-50, as calculated by
 46 ordinary linear regression. Units are in K per decade. In each box, the top value is
 47 the global mean, the middle value is the land mean, and the bottom value is the
 48 ocean mean.
 49

	abrupt4xCO2	G1	G1ocean-Albedo
BNU-ESM	0.27	0.05	0.04
	0.28	0.09	0.06
	0.26	0.03	0.04
CanESM2	0.29	-0.04	-0.01
	0.32	-0.04	0.01
	0.27	-0.04	-0.02
CESM-CAM5.1-FV	0.22	-0.02	-0.01
	0.22	-0.04	-0.02
	0.22	-0.01	-0.01
CSIRO-Mk3L-1.2	0.24	0.02	-0.02
	0.26	0.02	-0.02
	0.23	0.01	-0.02
EC-Earth	0.26	-0.04	0.04
	0.29	-0.04	0.05
	0.25	-0.04	0.03
GISS-E2-R	0.10	0.01	-0.04
	0.09	0.01	-0.04
	0.11	0.01	-0.04
HadGEM2-ES	0.30	0.04	0.11
	0.36	0.06	0.14
	0.27	0.03	0.10
IPSL-CM5A-LR	0.38	0.02	-0.05
	0.44	0.03	-0.08
	0.35	0.02	-0.04
MIROC-ESM	0.34	0.02	-0.03
	0.40	0.03	-0.02
	0.34	0.02	-0.03
MPI-ESM-LR	0.22	0.03	0.02
	0.27	0.05	0.04
	0.20	0.02	0.01
NorESM1-M	0.19	-0.02	-0.06
	0.22	-0.04	-0.05
	0.17	-0.02	-0.06
Model mean	0.26	0.01	-0.00
	0.29	0.01	0.01
	0.24	0.00	-0.00

50

51 **Table S3.** Change (from piControl) in albedo as measured at the top of the
 52 atmosphere, averaged over years 11-50 of simulation. Calculations are differences
 53 in ratios of upward to downward shortwave radiative flux at TOA. Values in each
 54 box are (in order) ensemble minimum, ensemble mean, and ensemble maximum.
 55 All values are rounded to four decimal places.
 56

	Global	Land	Ocean
abrupt4xCO2	-0.02	-0.03	-0.02
	-0.01	-0.02	-0.01
	0.00	0.00	0.00
G1	-0.01	-0.01	-0.01
	-0.01	-0.01	-0.01
	-0.00	0.00	-0.00
G1ocean-Albedo	-0.00	-0.03	0.01
	0.01	-0.01	0.02
	0.02	0.00	0.03

57

58 **Table S4.** Change (from piControl) in surface albedo, averaged over years 11-50 of
 59 simulation. Calculations are differences in ratios of upward to downward
 60 shortwave radiative flux at the surface. Values in each box are (in order) ensemble
 61 minimum, ensemble mean, and ensemble maximum. All values are rounded to four
 62 decimal places.
 63

	Global	Land	Ocean
abrupt4xCO2	-0.04	-0.04	-0.03
	-0.02	-0.02	-0.02
	-0.01	-0.01	-0.00
G1	-0.01	-0.02	-0.01
	-0.00	-0.00	-0.00
	0.00	0.00	0.00
G1ocean-Albedo	0.03	-0.02	0.06
	0.06	-0.00	0.09
	0.09	0.00	0.13

64

65 **Table S5.** Change in surface air temperature (K) from piControl, averaged over
 66 years 11-50 of simulation. Values in each box are (in order) ensemble minimum,
 67 ensemble mean, and ensemble maximum. All values are rounded to four decimal
 68 places.
 69

	Global	Land	Ocean
abrupt4xCO2	2.79	4.04	2.28
	4.42	5.93	3.80
	5.29	7.30	4.65
G1	-0.31	-0.24	-0.38
	0.02	0.24	-0.07
	0.64	0.81	0.57
G1ocean-Albedo	-0.12	0.41	-0.33
	0.36	1.14	0.04
	1.20	1.83	0.95

70

71 **Table S6.** Change in TOA net radiative flux ($W m^{-2}$) from piControl, averaged over
 72 years 11-50 of simulation. Values in each box are (in order) ensemble minimum,
 73 ensemble mean, and ensemble maximum. All values are rounded to four decimal
 74 places.
 75

	Global	Land	Ocean
abrupt4xCO2	2.22	-0.66	1.92
	2.65	1.71	3.04
	3.62	3.64	4.01
G1	-0.20	-1.07	-1.03
	0.03	0.74	-0.26
	0.23	2.45	0.54
G1ocean-Albedo	-1.45	4.85	-5.11
	-0.14	7.22	-3.18
	0.39	9.73	-2.06

76

77 **Table S7.** Change in Horizontal Energy Transport (Section 3.3; $W m^{-2}$) from
 78 piControl, averaged over years 11-50 of simulation.
 79

	abrupt4xCO2	G1	G1ocean-Albedo
BNU-ESM	0.88	0.13	1.46
CanESM2	0.27	0.77	2.46
CESM-CAM5.1-FV	1.02	0.88	2.36
CSIRO-Mk3L-1.2	0.17	0.26	1.89
EC-Earth	0.09	0.43	2.02
GISS-E2-R	-0.21	0.72	1.35
HadGEM2-ES	0.84	1.03	2.54
IPSL-CM5A-LR	-0.04	0.82	1.80
MIROC-ESM	0.81	0.29	2.67
MPI-ESM-LR	0.35	0.99	2.45
NorESM1-M	1.07	0.92	3.21
Model mean	0.47	0.66	2.20

80

81 **Table S8.** Change in net shortwave radiative flux at the surface ($W m^{-2}$) from
 82 piControl, averaged over years 11-50 of simulation. Values in each box are (in
 83 order) ensemble minimum, ensemble mean, and ensemble maximum. All values are
 84 rounded to four decimal places.

85

	Global	Land	Ocean
abrupt4xCO2	-2.17	-3.52	-3.06
	-0.28	1.56	-1.04
	1.86	4.12	2.01
G1	-6.41	-6.52	-6.69
	-5.00	-4.08	-5.38
	-4.01	-1.70	-3.65
G1ocean-Albedo	-9.87	-3.60	-13.01
	-7.83	-0.21	-10.97
	-6.07	2.79	-8.54

86

87 **Table S9.** Change in net longwave radiative flux at the surface ($W\ m^{-2}$) from
 88 piControl, averaged over years 11-50 of simulation. Values in each box are (in
 89 order) ensemble minimum, ensemble mean, and ensemble maximum. All values are
 90 rounded to four decimal places.

91

	Global	Land	Ocean
abrupt4xCO2	4.22	1.80	4.53
	6.61	3.75	7.78
	8.63	6.31	9.80
G1	0.77	0.30	0.44
	1.27	1.54	1.17
	2.51	3.69	2.27
G1ocean-Albedo	1.02	-0.15	0.96
	2.57	2.05	2.78
	6.25	4.74	7.22

92

93 **Table S10.** Change in sensible heat flux from the surface to the atmosphere
 94 (positive upward; $W\ m^{-2}$) from piControl, averaged over years 11-50 of simulation.
 95 Values in each box are (in order) ensemble minimum, ensemble mean, and
 96 ensemble maximum. All values are rounded to four decimal places.
 97

	Global	Land	Ocean
abrupt4xCO2	-2.36	0.73	-4.46
	-1.14	3.85	-3.19
	0.14	6.64	-2.25
G1	-1.16	-1.73	-1.05
	-0.21	1.13	-0.76
	0.81	3.89	-0.28
G1ocean-Albedo	-1.85	-0.99	-2.20
	-0.20	2.87	-1.47
	1.05	6.00	-0.34

98

99 **Table S11.** Change in latent heat flux from the surface to the atmosphere (positive
 100 upward; $W m^{-2}$) from piControl, averaged over years 11-50 of simulation. Values in
 101 each box are (in order) ensemble minimum, ensemble mean, and ensemble
 102 maximum. All values are rounded to four decimal places.
 103

	Global	Land	Ocean
abrupt4xCO2	1.40	-4.75	3.93
	4.90	1.10	6.47
	7.24	6.50	8.38
G1	-5.99	-8.64	-4.89
	-3.57	-3.64	-3.55
	-1.23	1.12	-2.20
G1ocean-Albedo	-7.27	-6.47	-7.89
	-5.05	-1.01	-6.71
	-2.15	4.64	-4.95

104

105 **Table S12.** Change in ΔB (Equation 8; $W m^{-2}$) from piControl, averaged over years
 106 11-50 of simulation. Values in each box are (in order) ensemble minimum,
 107 ensemble mean, and ensemble maximum. All values are rounded to four decimal
 108 places.
 109

	Global	Land	Ocean
abrupt4xCO2	2.17	-0.15	2.97
	2.57	0.20	3.44
	3.26	0.44	3.98
G1	-0.21	-0.12	-0.28
	0.05	-0.04	0.08
	0.29	0.04	0.39
G1ocean-Albedo	-0.29	-0.14	-0.37
	0.01	-0.01	0.02
	0.57	0.14	0.75

110

111 **Table S13.** Change in precipitation (mm day⁻¹) from piControl, averaged over years
 112 11-50 of simulation. Values in each box are (in order) ensemble minimum,
 113 ensemble mean, and ensemble maximum. All values are rounded to four decimal
 114 places.
 115

	Global	Land	Ocean
abrupt4xCO2	0.05	-0.08	0.09
	0.17	0.13	0.19
	0.28	0.24	0.33
G1	-0.21	-0.28	-0.19
	-0.12	-0.11	-0.13
	-0.06	-0.01	-0.07
G1ocean-Albedo	-0.26	-0.14	-0.36
	-0.19	0.05	-0.29
	-0.11	0.20	-0.22

116

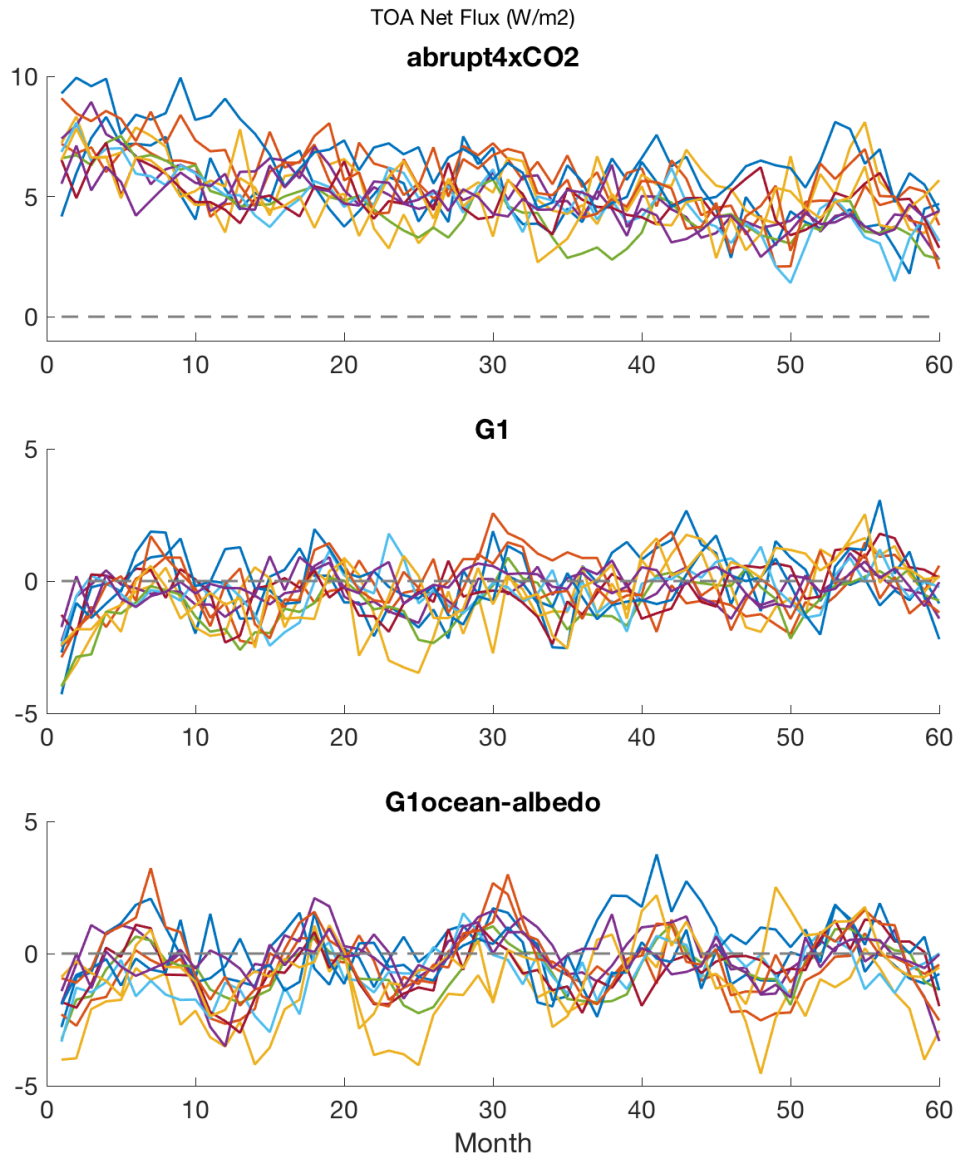
117 **Table S14.** Change in evaporation (mm day⁻¹) from piControl, averaged over years
 118 11-50 of simulation. Values in each box are (in order) ensemble minimum,
 119 ensemble mean, and ensemble maximum. All values are rounded to four decimal
 120 places.
 121

	Global	Land	Ocean
abrupt4xCO2	0.05	-0.16	0.14
	0.18	0.04	0.23
	0.28	0.23	0.39
G1	-0.21	-0.30	-0.17
	-0.12	-0.13	-0.12
	-0.04	0.04	-0.08
G1ocean-Albedo	-0.25	-0.22	-0.27
	-0.18	-0.04	-0.23
	-0.07	0.16	-0.17

122

123 **Table S15.** Change in precipitation minus evaporation (mm day⁻¹) from piControl,
 124 averaged over years 11-50 of simulation. Values in each box are (in order)
 125 ensemble minimum, ensemble mean, and ensemble maximum. All values are
 126 rounded to four decimal places.
 127

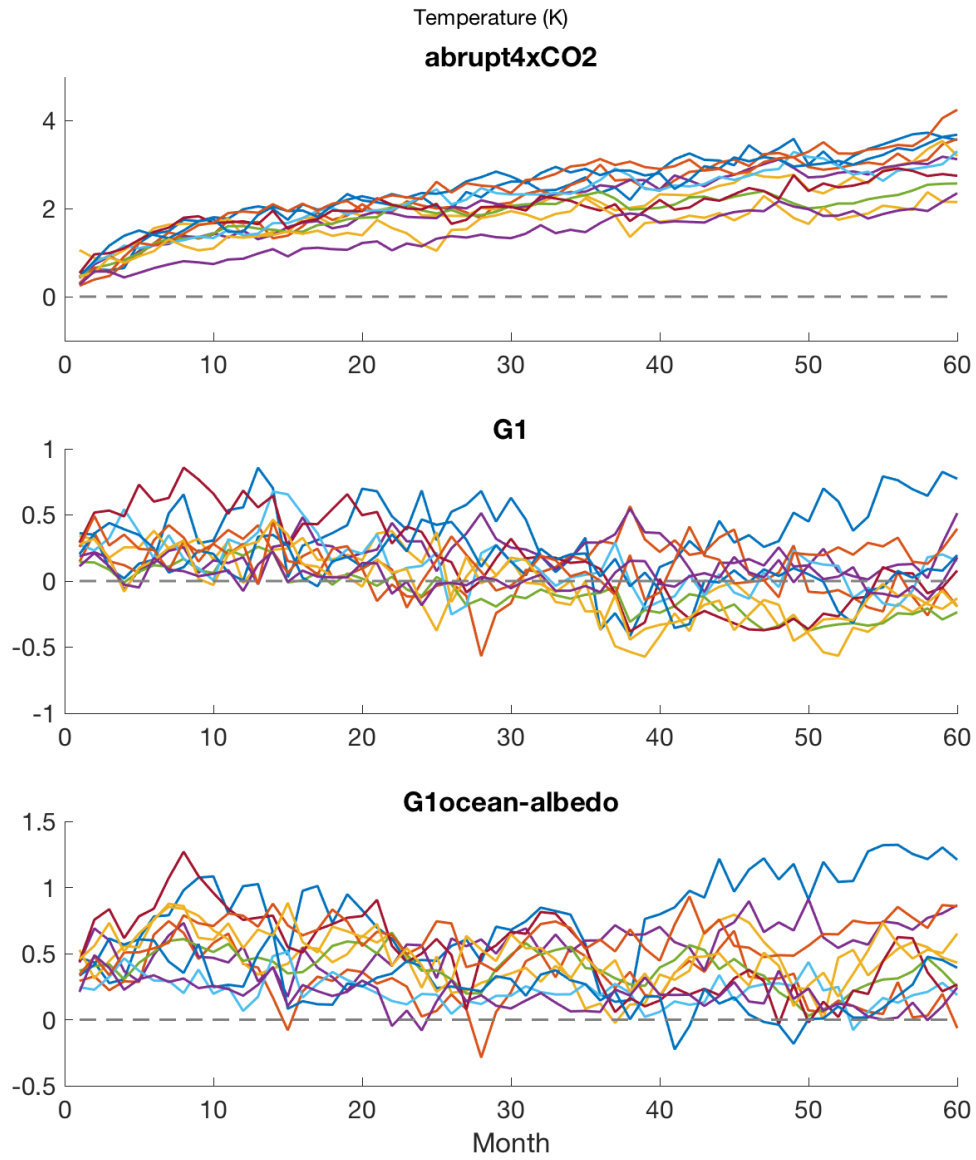
	Global	Land	Ocean
abrupt4xCO2	-0.06	-0.01	-0.09
	-0.01	0.09	-0.05
	0.00	0.20	-0.01
G1	-0.01	-0.05	-0.04
	-0.00	0.02	-0.01
	0.00	0.11	0.01
G1ocean-Albedo	-0.19	-0.18	-0.19
	-0.02	0.09	-0.06
	0.00	0.18	-0.01



128

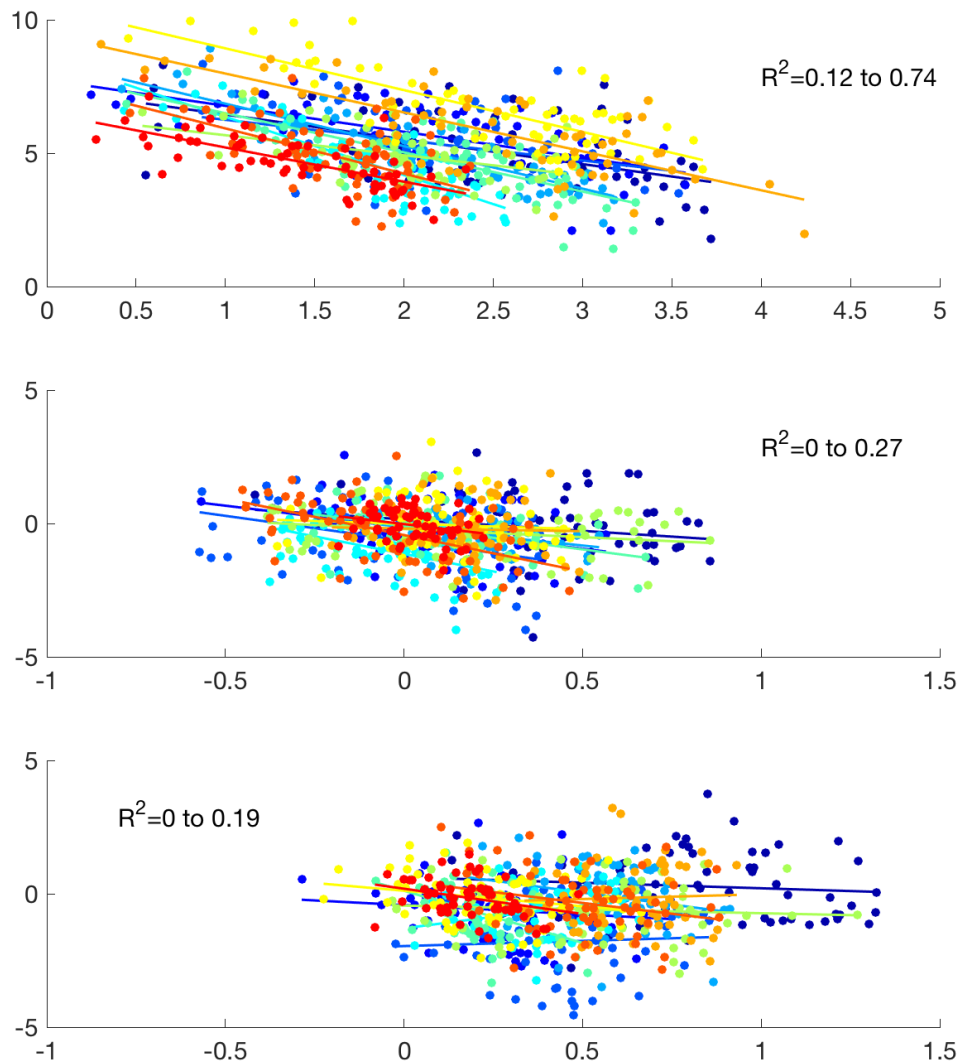
129

130 **Figure S1.** Top-of-atmosphere net radiative flux change ($W\ m^{-2}$) in the
 131 abrupt4xCO₂ (top), G1 (middle), and G1ocean-albedo (bottom) experiments. Each
 132 color represents a different model. All values are subtracted month-by-month from
 133 the corresponding months of the preindustrial control simulation for the first 60
 134 months (5 years) of simulation.



135
136
137

Figure S2. As in Figure S1 but for global mean temperature change (K).



138
139

140 **Figure S3.** Gregory plots (Gregory et al., 2004), as described in Section 3.2 of the
141 main text. Top panel corresponds to abrupt4xCO2, middle panel corresponds to G1,
142 and bottom panel corresponds to G1ocean-albedo. All values are monthly averages
143 over the first five years of simulation, essentially scatter plots of the values in
144 Figures S1 (net TOA radiative flux change; y-axis in this figure) and S2 (global mean
145 temperature change; x-axis in this figure). Each color represents a different model.
146 Lines are obtained through ordinary least squares regression through the points of
147 the same color. R^2 ranges indicate the minimum and maximum R^2 value among the
148 model ensemble in each panel.