

Runaway Electron Beam Control

D. Carnevale¹, M. Ariola⁹, G. Artaserse², F. Bagnato³, W. Bin⁴, L. Boncagni², T. Bolzonella⁸, F. Bombarda², P. Buratti², L. Calacci¹, F. Causa⁴, S. Coda³, F. Cordella², J. Decker³, G. De Tommasi⁹, B. Duval³, B. Esposito², G. Ferrò¹, O. Ficker⁷, L. Gabellieri², A. Gabrielli¹, S. Galeani¹, C. Galperti³, S. Garavaglia⁴, A. Havranek⁷, M. Gobbin⁸, M. Gospodarczyk¹, G. Granucci⁴, E. Joffrin¹⁰, M. Lennholm¹⁰, A. Lier⁵, E. Macusova⁷, F. Martinelli¹, J. R. Martìn-Solis⁶, J. Mlynar⁷, L. Panaccione⁹, G. Papp⁵, M. Passeri¹, G. Pautasso⁵, Ž. Popovic⁶, C. Possieri¹, G. Pucella², U. A. Sheikh³, G. Ramogida², C. Reux¹⁰, F. Rimini¹⁰, A. Romano², M. Sassano¹, B. Tilia², O. Tudisco², D. Valcarcel¹⁰, the FTU team¹¹, the EUROfusion MST1 team¹² and JET Contributors¹³

¹ Dip. di Ing. Civile ed Informatica, Università di Roma Tor Vergata, Italy

² ENEA, Fusion and Nuclear Safety Department, Via E. Fermi 45, 00044 Frascati, Italy

³ Ecole Polytechnique Fédérale de Lausanne, Swiss Plasma Center, Lausanne, Switzerland

⁴ Istituto di Fisica del Plasma, CNR, Milano, Italy

⁵ Max-Planck-Institute for Plasma Physics, D-85748 Garching, Germany

⁶ Universidad Carlos III de Madrid, Avda. Universidad 30, 28911, Madrid, Spain

⁷ Institute of Plasma Physics of the CAS, CZ-18200 Praha 8, Czech Republic

⁸ Consorzio RFX, Padova, Italy

⁹ Euratom-Enea-Crea/Univ. di Napoli Federico II, Via Claudio 21, 80125, Napoli, Italy

¹⁰ Euratom-CCFE, Culham Science Centre, OX14 3DB, Abingdon, UK

¹¹ See the author list of “G. Pucella et al., Proc. 25th IAEA FEC 2014”

¹² See the author list of “Meyer et al. 2017, Nucl. Fusion **57** 102014”

¹³ See the author list of “X. Litaudon et al 2017 Nucl. Fusion **57** 102001”

Abstract.

Post-disruption Runaway Electron (RE) beams in tokamaks with large current can cause deep melting of the vessel and are one of the major concern for ITER operations. Consequently, a considerable effort is provided by the scientific community in order to test RE mitigation strategies. We present an overview of the results obtained at FTU and TCV controlling the current and the position of the RE beams to improve safety and repeatability of mitigation studies such as Massive Gas (MGI) and Shattered Pellet Injections (SPI). We show that the proposed RE Beam Controller (REB-C) implemented at FTU and TCV is effective and that current reduction of the beam can be performed via the central solenoid reducing the energy of REs, providing an alternative/parallel mitigation strategy to MGI/SPI. Experimental results show that, meanwhile deuterium pellets injected on a fully formed RE beam are ablated but do not improve RE energy dissipation rate, heavy metals injected by a Laser Blow Off (LBO) system on low-density flat-top discharges with high level of RE seeding seem to induce disruptions expelling REs. Instabilities during the RE beam plateau phase have shown to enhance losses of REs, expelled from the beam core. Then, with the

aim of triggering instabilities to increase RE losses, an oscillating loop voltage has been tested on RE beam plateau phase at TCV revealing, for the first time, what seems to be a full conversion from runaway to ohmic current. We finally report progresses in the design of control strategies at JET in view of the incoming SPI mitigation experiments.

1. Introduction

Post-disruption Runaway Electron beams mitigation is one of the main concerns for ITER operations where RE beam could reach up to 12MA, mainly due to secondary (avalanche) generation mechanisms [1], and even if the RE beam is confined and eventually lost (final loss) with current larger than 2 MA the damages to the vessel can be intolerable for ITER [2].

Joint efforts among researchers all over the world aim at providing mitigation strategies in order to reduce the risk associated with RE beams impacts. The main solution seems to inject heavy particles (Ar/Ne) before or during the Current Quench (CQ) that anticipate the post-disruption RE beam formation to limit runaway formation and increase energy dissipation by particle drag and radiation. However, the quantity of injected particles and its assimilation has to induce CQs lasting more than 50 ms and less than 150 ms to limit electro-magnetic loads [2]. This operational window seems quite difficult to be obtained meanwhile the effectiveness of the secondary (on the fully formed RE beam) MGI injection versus SPI (Shattered Pellet Injections) is under study [20, 32, 5]. On the other way, JET experiments show a reduced RE formation due to the small electrical field at CQ (slower CQ) and plasma contamination thanks to the ITER-like wall [3].

To be able to test mitigation techniques on RE beams, control algorithms have been developed at Tore-Supra [4], DIII-D [5], FTU [7], TCV [6], ASDEX [20] and COMPASS [32]. Indeed, stabilization of the RE beam position and its current is mandatory to have reliable, reproducible and safe experiments. Furthermore, current control to ramp-down the RE beam current can be combined with MGI/SPI dissipation strategies to provide redundancy and backup. The main limitations of RE beam position control for ITER are the poloidal coils and current amplifiers limits: DINA simulations have shown that RE beam control should be effective for CQ drops smaller than 4 MA (1/3 of the initial Ohmic current). In Section 2 we describe the control architecture and the experimental results obtained at FTU and TCV whereas in Section 4 are illustrated the proposed strategies to improve the RE beam stabilization at JET for the next SPI campaign.

2. Control Strategy

We designed control tools to improve RE beam stabilization and ramp-down its current with an architecture conceived to be plugged onto the *standard* control scheme, i.e. the one that is considered for thermal plasmas. This modular approach allows isolated validation of the new control tools minimizing changes in the code of the standard feedback. The structure of the RE Beam Controller (REB-C) is shown in Figure 1. The standard (thermal plasmas) control scheme is depicted in black: C is the regulator used to stabilize the plasma position and current, in many facilities are PID controllers, whereas the block named PLANT represents the dynamics of the electrical circuitry of the active coils, their current amplifiers and the plasma/RE beam dynamics. The block PLANT represents also the sensors (e.g. Mirnov coils) which are involved in the reconstruction of the signals used for plasma position and current stabilization. As discussed in [7], the standard routines that use magnetic measurements to reconstruct the plasma boundaries and its geometric center can be also considered in case of RE beams. Nevertheless, RE beam dynamics are quite different from thermal plasmas and require dedicated control algorithms to improve its confinement as discussed in [18].

The new tools we propose can be identified as three boxes added to the standard control system: the detector of the CQ and RE plateau onset (block D in Figure 1), the block R_{RE} that modifies the standard (thermal plasmas) current reference and the block C_{RE} that modifies the desired radial beam center and the output of the controller C . All the aforementioned tools are detailed discussed next.

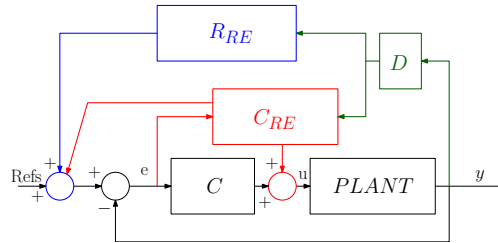


Figure 1. The REB-C scheme: the standard control feedback with the regulator C is augmented with the block C_{RE} that improves RE beam stabilization, the block R_{RE} that changes the current reference to obtain a ramp-down and the block D that detects a formed RE beam.

2.1. Current Quench and RE plateau detector

It is necessary to know when the RE beam is formed in order to start a controlled RE beam current ramp-down and introduce new control action by C_{RE} . To detect the CQ and the following RE beam formation, i.e. the RE plateau onset, we refer to the discrete time filter and the logics proposed in [8] processing only the I_p signal. The filter evaluate an approximate derivative of I_p that is used to detect fast I_p drops associated to CQs and then the (possible) formation of plateaus characterized by

slower current decay. The code implementing the detector is represented by the block D of Figure 1 and once the plateau onset is found then the blocks R_{RE} and C_{RE} are activated to trigger a position controlled current ramp-down. For safety reason, the ramp-down it is also triggered in case the level of Hard-X Rays (HXR) overpass a threshold which is associated to high level of interactions between the REs and the vessel. The latter type of ramp-down is called *soft-stop*.

2.2. Current ramp-down

The RE beam current ramp-down is obtained once the block R_{RE} is activated, by the block D , and changes the current reference signal. The current reference is changed as follows: it is initially maintained at the pre-disruption value for a selectable interval of time (10-30 ms) after the plateau onset, then it quickly (exponentially) converges to a straight line that goes from the post-disruption (plateau onset) current down to zero with a selectable rate. The current reference is initially (10-30 ms) maintained constant so that the I_p control system (part of the block C in Fig.1) tries to sustain the current and consequently reduce the plasma/beam radial displacement toward the high-field side (HFS). If the current it is not sustained initially, due to the increased drag caused by impurities at the disruption (CQ), the larger current rate of loss after the CQ induces faster inward (HFS) movement of the plasma/beam column due to unbalanced magnetic forces exerted by the PF coils. There is a secondary effect that limit the inner displacement of REs: maintaining constant the current reference a large I_p tracking error translates into an increased flux, produced by mean of the Ohmic circuit, and such flux is quickly absorbed by REs that increase their energy orbiting consequently with an outer radial center, i.e. REs orbits center moves toward low-field side (LFS) counteracting the inward shift due to CQ. For the same reason, to avoid too large radial displacements of REs, no more than 30 ms after the plateau onset the current reference is decreased down to the I_p at the plateau onset (post-disruption value), and then ramped down linearly. During the linear ramp-down, the reference is modified in order to limit the loop voltage (V_{loop}), measured on-line, below a given predefined threshold. Indeed, experimental analysis have revealed that during the RE beam current ramp-down the higher electrical field the larger MHD modes [6, 32]. Then, the block R_{RE} shifts the desired trajectory toward the measured value in order to reduce the I_p tracking error, and then the flux provided by the central solenoid, when V_{loop} is above a predefined threshold \ddagger . The shift is obtained changing the parameter $c(t)$ of the current reference $I_{p,ref} = \text{sign}(I_{p,pl}) \max(0, c(t) + |I_{p,pl}|(t_{end} - t)/(t_{end} - t_{pl}))$, where $I_{p,pl}$ and t_{pl} are the current and the time at which the ramp-down is triggered, i.e. when a plateau onset is detected by the block D or when a *soft-stop* is request (see 2.1). The time t_{end} is such that $-I_{p,pl}/(t_{end} - t_{pl})$ equals the desired ramp-down rate. The value of the parameter $c(t)$ is evaluated on-line to reduce the current error $I_p - I_{p,ref}$, and then lowering the $V_{loop}(t)$, as follows:

$$\dot{c} = \begin{cases} k(I_p - I_{p,ref})\text{sign}(I_{p,pl}) & \text{if } (V_{loop}\text{sign}(I_{p,pl}) > S_v, |I_p| \geq I_{p,min}), \\ 0 & \text{otherwise,} \end{cases} \quad (1)$$

that is such that the $I_{p,ref}$ converges exponentially, with a time constant $k > 0$ chosen larger than the time constant of the ohmic circuitry, to the actual I_p in case the measured V_{loop} would provide too much energy to REs (i.e. when V_{loop} overpass the selected threshold S_v). It has to be noted that the measured V_{loop} does not depend

\ddagger The loop voltage threshold has been set equal to 3 V for FTU and 1.85 V for TCV.

only on the flux provided by the central solenoid but also on the current decay, MHD activity and drag (Z_{eff}) but the algorithm, at the present stage, does not take these elements into account.

2.3. Position control

The position control block C_{RE} in Fig. 1 has been designed to improve stabilization of the RE beam. The magnetic measurements are currently used in different tokamaks (DIII-D, FTU, TCV, ASDEX, JET, KSTAR) to estimate the beam position: Experiments at DIII-D analyzing soft-X camera and the scanning CO₂-CO interferometer at FTU have shown that such approximation is valid [31, 7]. We intend to provide a refinement of the standard stabilization system in C to improve tracking performances and, consequently, safety for RE beam experiments. The block C_{RE} has in input the position tracking error, as the controller C . C_{RE} redefines the desired radial position of the beam center and modifies the request of current (FTU) or voltage (TCV) to the PF coils requested by C . The reference of the radial coordinate of the beam center is moved toward the HFS, as suggested in [7, 10], to reduce RE-vessel interactions: the radial center reference is reduced linearly to a desired value (about 15% smaller than the standard one). Indeed, with respect to standard plasmas, the radial center of the REs orbits is shifted toward the LFS due to their higher energy [10].

2.3.1. Fast Hybrid Controller To improve fast displacements recovery an ad-hoc tool has been introduced exploiting the framework of hybrid systems [33]. We provide as first a quick overview of the *fast controller*: let e be the (vertical/radial center) tracking error and $E = (e, \dot{e}, \ddot{e})$ the state of the position error system, then the new controller acts generating control signal as ramps whenever E enters into an *unsafe* region Ω in order to steer E back into the *safe* one. Vertical and radial displacements of the RE beam are considered to be decoupled and then two independent *fast controllers* acting on the PF coils have been designed.

Define the set Ω as

$$\Omega = \{E \in \mathbb{R}^3 : |e| > \sigma_1 \wedge |\dot{e}| > \sigma_2 \wedge e\dot{e} > 0 \wedge \text{sign}(e)\ddot{e} > \sigma_3\}, \quad (2)$$

for given parameters $(\sigma_1, \sigma_2, \sigma_3)$ and where the time derivatives of the tracking error signal e are evaluated on-line via specific filters [8]. Although it is not immediate, the set Ω identifies portion of the state space in which trajectories are pointing far from the origin, i.e. the tracking error is going to increase immediately after E enters in Ω . As an example, consider the condition $e\dot{e} > 0$ in (2): if e and \dot{e} are positive then e will (instantaneously) further increase, or if both e and \dot{e} are negative then e will (instantaneously) further decrease. The output $u_f(t)$ of the *fast controller* is generated via the following equations (hybrid system):

$$u_f(t) = -\text{sign}(e(t))k_r(t)(t - t_k), \quad \text{if } E \in \Omega, \quad (3)$$

$$\dot{u}_f(t) = -k_d u_f(t), \quad \text{if } E \notin \Omega, \quad (4)$$

where t_k is the most recent time at which $E(t)$ entered into Ω . The fast controller has been designed initially to cope with elongated unstable discharge at FTU [12] due to the phase lag introduced by the current amplifier, not designed to deal with vertical instability since FTU is a tokamak with circular plasmas. Then, to manage this phase lag in the control loop, the fast controller (3)-(4) exploits the second derivative \ddot{e} to

retrieve preemptive information on the effect of the ramp steering E back into the safe region: this information is contained in the constraint $\text{sign}(e)\ddot{e} > \sigma_3$ of (2). Indeed, selecting for example σ_3 negative, the ramp is switched off exponentially by (4) if $\text{sign}(e)\ddot{e}$ is negative, meaning that the error derivative is going to decrease and, due to the phase lag, $E(t)$ might soon leave Ω and the control action need to be reduced to avoid instability: phase lag usually introduce unstable oscillations. The origin of the overall closed-loop system can be proved to be asymptotically stable assuming a linear transfer function of the plant, with parameters within a bounded region, recurring to the stability analysis tools for hybrid systems [33]. The slope of the ramp $k_r(t)$ is changed adaptively by an heuristic: it is increased when $E(t)$ enters into Ω on the same “direction” (sign of $e\dot{e}$) for a certain number of times within a predefined interval of time, whereas $k_r(t)$ is decreased when oscillations are detected since they might be caused by high values of k_r . Furthermore, to avoid fast u_f oscillations on Ω boundaries (chattering), an hysteresis is implemented.

This control action do not excite fast plant dynamics unlike bang-bang type controllers and its parameters have been experimentally tuned very quickly thanks to the adaptive gain k_r (3 shots for FTU and 1 for TCV). The fast controller did not improve only RE beam control but also vertical stability for FTU elongated plasma discharges [12].

The performances of the new control tools are shown in Fig. 2. In the left column are shown pictures from FTU shots: #41918 is with an advanced version of REB-C having also the fast controller that was missing in #41577. In the middle column are shown TCV pulses with REB-C #61503 and without #61501: the standard controller can in about the 50% of the shots maintain the RE beams, whereas the REB-C has never shown a vertical instability like in #61501. Furthermore, the stabilization of the shot #61503 with the REB-C controller is harder since a square wave is added to the I_p reference to induce electrical field oscillations: such current oscillation increases the MHD activity, enhances RE losses[§] and deteriorates radial displacements. Nevertheless REB-C outperforms the standard controller. In the right column is depicted a RE beam desired vertical displacement of about 11 cm with satisfactory tracking error $e_h(t) = z_{\text{geom,ref}} - z_{\text{geom}}(t)$. The signal z_{geom} is the vertical coordinate of the RE beam center provided by LIUQE equilibrium reconstruction code [34]. In the Fig.2 the time traces in the I_p plot are the plasma/RE beam current (solid) and the current reference $I_{p,\text{ref}}$ (dashed). For FTU are shown the counts (multiply by the factor 1E14) of the Fission Chamber (FC) camera sensible to photo-fissions induced by REs with energy higher than 6 MeV hitting the vessel, whereas for TCV are shown the HXR counts of the photo multiplier (PMTX) tube measuring emissions of runaways (synchrotron and collisions). At the bottom plots of Fig. 2, for FTU it is shown the estimated external radius of the beam center R_{ext} (solid) and the desired one (dashed). For TCV are shown the vertical tracking error e_h and the vertical coordinates of the beam center (z_{geom}). It has to be noted that the loss of RE beams at TCV, when the REB-C is used, is due to a delay introduced by the PF current amplifiers at zero crossing: we are studying possible solutions to this issue.

The **RE energy suppression** during the current ramp-down is confirmed by the Runaway Electron and Image Spectroscopy (REIS) [7], a diagnostic that provides the spectra of the synchrotron radiation emitted by in-flight REs: after the plateau onset

[§] Similar results where electrical field oscillations have induced RE losses have been discussed in [9] and [32].

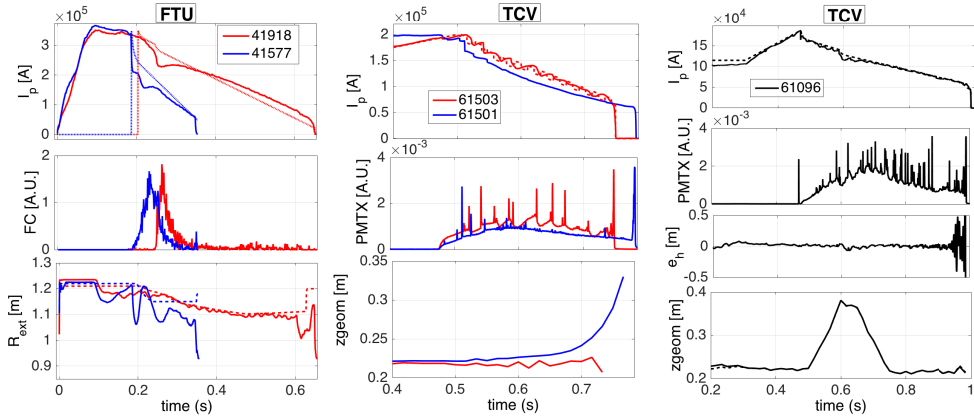


Figure 2. The REB-C performances: (left) FTU controlled ramp-down with (#41918) and without (#41577) the fast controller. (center) TCV controlled ramp-down with (#61503, also with current oscillations) and without (#61501) the REB-C that is used to obtain (right) a large RE beam vertical displacement of about 11 cm, shot #61096.

the RE energy distribution peak, which is correlated with the value of the coefficient a_2 of a second order polynomial $a_2x^2 + a_1x + a_0$ fitting the measured spectra, moves toward lower energies, according also to other diagnostics such as HXR, FC, proving that RE energy is decreased during the ramp-down.

2.4. Final loss

RE beams can provoke potential damage also at the final loss due to magnetic into kinetic energy conversion, as discussed in [25, 26, 27]. Analysis on FTU discharges have revealed, during RE current ramp-down, anomalous fast radial inward movements of the RE beam associated also to partial/small RE loss against the vessel, typically within 150-180 ms after the onset of the ramp-down (cfr. the external radius of the beam in Fig. 2 approximatively at 0.6s). At TCV two RE beam ramp-down adding electrical field oscillations (square waves added to the I_p reference) have shown an extremely interesting phenomenon: before the usual RE beam final loss the REs seem to disappear whereas the current remains almost unchanged, as if a ohmic plasma with no runaways forms, with a reduced L_i and a sudden inner radial displacement. The inner radial displacement when the REs are loss at TCV can be correlated, as in FTU, to the sudden loss of REs energy. To give a possible explanation to such findings we can refer to the hysteresis that has been found to affect the REs generation/suppression [30]. In the right plots of Fig. 3, before the pulses end, runaways are lost completely but there is only a 15% current drop: the electrical field oscillations might have induced the (sudden) hysteresis transition across the unstable equilibria that divide the ohmic from the runaway region in the energy state space representation. Temperature measurements exclude the possibility that a thermal plasma would coexist with REs before their loss. Further experiments have been conducted with larger V_{loop} oscillations with the aim of obtaining similar preemptive loss of REs without current drops, i.e. a possible formation of ohmic plasma from

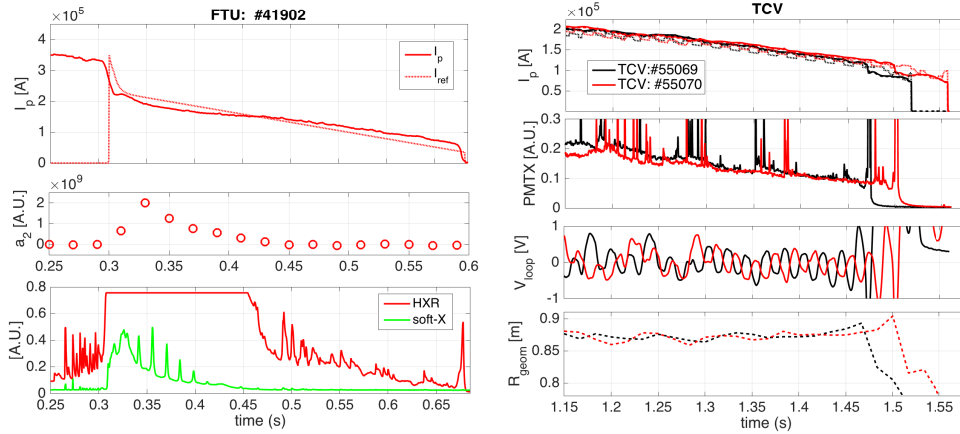


Figure 3. *Right:* an FTU RE beam current ramp-down showing that the coefficient a_2 , fitting the REs synchrotron radiation spectra, decreases after the current quench proving that RE energy is reduced, coherently also to HXR. *Left:* two shots with oscillating loop voltages during ramp-down showing complete loss/conversion of REs before the final current loss.

a RE beam. However, in these new experiments one of which is the shot #661502 in Fig. 2, the plasma conditions changed and the mean electrical field during the ramp-down resulted slightly positive (higher drag due to larger amount of impurities injected by the new disruption mitigation valve system), possibly inhibiting a gradual REs energy reduction process. Further experiments are planned to investigate this important feature that would possibly allow to reduce the issue of the RE energy conversion into kinetic one at the final loss.

3. Deuterium Pellets and Laser Blow-Off injections on FTU

The REB-C has been used to stabilize the RE beam position and perform experiments on deuterium pellets and laser blow-off injections into flat-top plasma current with REs and post-disruption RE beams, respectively. Indeed, as mentioned in the introduction, the RE beam position and current control system can be coupled with other mitigation techniques or can be used to assess their effectiveness, providing experimental repeatability and improving safety.

The FTU facility is provided with a horizontal pellet injector that can launch, triggered by a TTL signal of the control system, up to two “small” deuterium pellets of about 1×10^{20} atoms at a speed of 1200 m/s and two “large” pellets with 2×10^{20} atoms at 1000 m/s. The time to reach the core of a normal plasma is about 0.3 ms and is usually used for fueling increasing the density up to 8×10^{20} with $I_p = 1.2$ MA (8T) [35]. To have an idea of the amount of atoms injected with respect to the plasma volume, a large pellet if injected on a 360 kA (5T) discharge induces a density limit disruption.

Fast H-alpha detectors, Mirnov coils (MHD sensors), a fast ($65 \mu\text{s}$) CO-CO₂ scanning interferometer and X-VUV spectrometer Schwob are used to analyze the discharges. The main results of D_2 pellets and Laser Blow-Off (LBO) injections are the following:

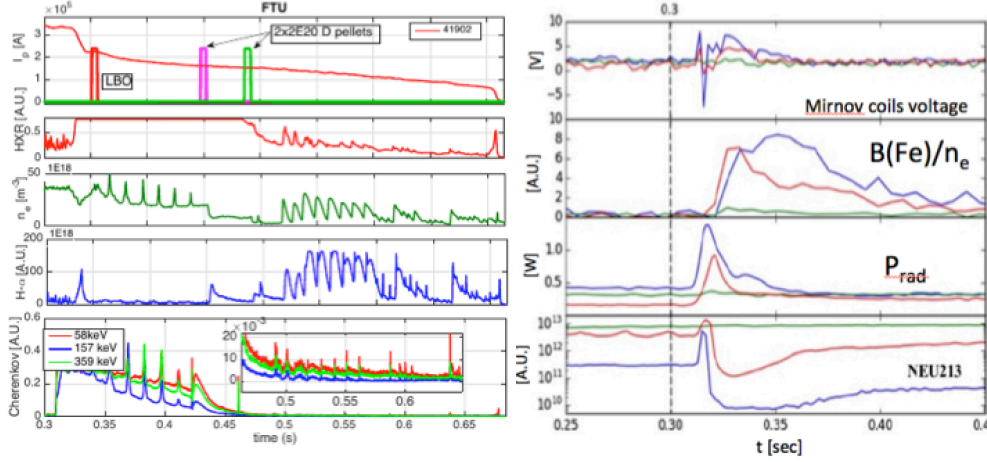


Figure 4. *Left: D_2 pellets and LBO injections on a post-disruption RE beam showing that the density drops at pellets injection while instabilities sets in after the plateau onset expelling REs out of the core as detected by the Cherenkov probes. Right: LBO injection of Iron on flat-top plasmas with in-flight REs causes small disruptions expelling REs, as revealed by the drops of NEU213, proportionally to the Iron ionization ($B(F_e)/n_e$).*

- Flat-top:** a small pellet yields n_e increase and with almost the same probability (50%) can lead to RE total expulsion (MHD driven instabilities) or RE increase (due to the increase of the electrical field). LBO can cause interesting RE expulsion, as for pellets, but do not increase the RE number. The amplitude of the induced MHD activity expelling the REs from the core seem to be proportional to the ionization of the impurity detected by the Schowb spectrometer as shown in the time trace of the second plot (right column) representing the evolution of the F_e XXIII (135.80 Å) line brightness normalized with respect to n_e , whereas the time traces NEU213 are γ rays and neutrons counts, measured by a scintillator, and provide qualitatively the number of in-flight REs. It is evident that the drops of NEU213 few milliseconds after the LBO injection at time 0.3 s, revealing that REs are lost, is correlated with the level of ionized atoms ($B(F_e)/n_e$ in the second plot) and radiated power (P_{rad}). It is clear indeed that the more Fe atoms are ionized the more they interact with the plasma triggering an instability expelling REs. It has to be noted that, for the shot whose signals are depicted in red, after the REs expulsion the other REs are generated given that was a low density discharge.
- RE beam:** pellets induce a further decrease of the temperature, which is already low, so that recombination takes place and electron density drops. Only in one discharges it has been recorded a large density increase when the pellets have been injected far from the plateau onset: the back ground plasma might have gained energy, then temperature, during the ramp-down. LBO does not provide any effect due to the low temperature of the beam (no ionization). Instabilities expelling REs have been recorded during the ramp-down as shown by MHD and Cerenkov probe spikes. Fan instability [29] sets in after 0.45s and has been recognized by marks on ECE emission, whereas the instability right after the

CQ up to 0.45 s is different. Recent studies might suggest that such losses are indication of whistler waves [23].

4. JET control tools

Past experiments on JET facilities have shown that selecting specific initial position ($z = 0.01$, $r = 0.4$) of a limiter low density circular plasma, the standard control system allowed to maintain a beam up to 200 ms as shown in Fig. 5. Nevertheless, large vertical excursions leading to premature loss of the RE beam have been observed. In view of the next Shattered Pellet Injections (SPI) experiments to study dissipation effects on REs energy, it is mandatory to have an improved and reliable RE beam confinement in order to have experiments repeatability. Analysis on RE beam losses revealed that the controller VS5, designed to stabilize the fast vertical plasma displacements (VDE), does not react to the slow drift which characterizes the movements of the RE beam plateau phase and leads to premature losses of the beam, as shown by the vertical center of the beam Z_p in Fig. 5. Indeed, the velocity observer that estimates VDEs acts as a high-pass filter and then slow drifts are filtered out. Consequently, the vertical velocity feedback loop feed with the observer output does not react to slow drift. It comes naturally then, since changes to the code of the position controller have not been allowed, to modify the observer to make it sensible to slow drifts, without losing the capability of the standard one to sense fast movements. Such an observer can be designed by properly selecting the parameters of the linear difference equation (Linear Time Invariant system) already implemented in the real-time code: we need only to provide different configuration parameters to design the new observer and the real-time control code is not changed. However, we desire to use the new observer only in case of RE beams plateau, then we implemented the CQ and plateau detector algorithm in order to switch from the standard to the new observer once the CQ is detected.

Apart of the new observer design, it is possible to activate also the the JET Shape Controller (SC) [36] at the plateau onset, that was switched-off in the past experiments. The Shape Controller might help in maintaining the vertical/radial stability of the beam since it can be configured to stabilize in closed loop the vertical Z_p and radial R_p coordinates of the beam center (estimated by equilibrium code). However, the response time of the SC in the feedback configuration is too slow for the RE beams. To provide faster responsiveness of the SC a possible solution consists into providing directly feed-forward currents of the PF coils used by the SC (P4 imbalance coils), i.e. the SC tries to impose directly the desired current on the PF coils instead of closing the feedback on the beam position. To provide a possible strategy for the selection of such preprogrammed coils current, a new tool similar to Rapidly-exploring Random Tree (RRT) [37] used in robotics has been conceived. Starting from experimental data, a graph representing plant transitions induced by given control actions is constructed and updated at each new experiment. The nodes of the graph are the state of the plant, the vector $(Z_p, \dot{Z}_p, \ddot{Z}_p)$ in this case, and the arches that allows to pass from node to node are the experimental control inputs (PF coils currents). At each node an LTI system is identified using standard identification tools. The control problem is then recast into an optimization path planning problem and a number of optimization tools can be used. Then, shot by shot, the system will suggest to the RDOs the pre-programmed currents that could improve the RE beam stabilization. This approach provides feed-forward signals and it is not robust by definition, although faster than

the SC in closed loop and might steel provide help if experiments are repeatable. Again, this solution has been proposed to bypass real-time control code changes.

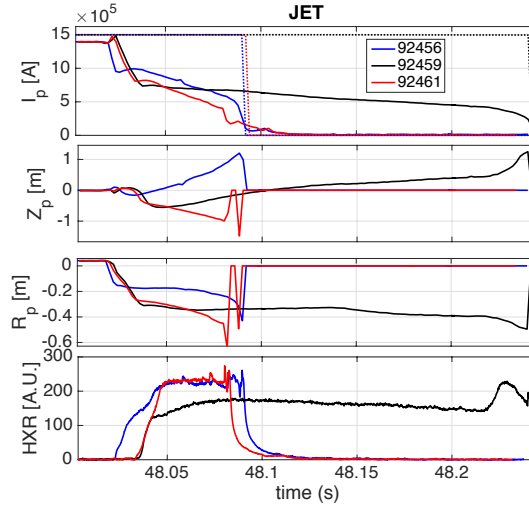


Figure 5. *JET past experiments: the standard control system has shown to be able to confine the RE beam up to 200 ms (#92459) although large vertical displacements usually lead to premature RE beam losses.*

5. Conclusion

The new control tools tested at FTU and TCV have shown that the RE beam position can be stabilized and its current ramped-down. RE beam confinement improved with the the installation of the REB-C at FTU and TCV, as shown by radial and vertical position of the RE beam center in Fig. 2. Given that the *Hybrid Fast Controller* is model-free, it is intrinsically robust and the portability from FTU to TCV paves the way to ITER implementation. It might be possible to further improve the REB-C designing a dedicated I_p controller, without relying on the standard one, possibly including real-time measurement of Z_{eff} to better regulate the flux absorbed by REs. Concerning the current ramp-down, it has been confirmed that controllability of the RE beam is depend on the I_p decaying rate: mitigation techniques should be compliant with the rate at which controllability is lost. Note that if fast RE current reduction is requested, due to limitation on the current rate of the central solenoid, a combined action of MGI/SPI is necessary. On the other way around, on slow decaying rate almost no flux has to be provided by the central solenoid and controllability improves: current on the PF coils has to be changed with lower rate (assuming no VDEs). At TCV, large RE beam vertical displacements have been successfully achieved and a new interesting phenomenon has been observed: REs are suddenly replaced by ohmic plasma, opening a possible new way to treat the final loss issue. On FTU, thanks to the RE beam control system, repeatable deuterium pellets experiments have been performed showing that D pellets do not increase REs dissipation rate (RE beams not formed using MGI), and large instabilities expelling REs have been observed. LBO experiments have shown that small disruptions leading to important REs loss can be

achieved using iron on flat-top low density discharges. This might suggest to use LBO before MGI to see if post-disruption RE current can be lowered. Finally, we have briefly discussed the observer redesign at JET and the use of a new tool based on graphs to possibly improve control performances for the next SPI experiments.

Acknowledgments: This work has been carried out within the framework of the EUROfusion Consortium and has received funding from the Euratom research and training programme 2014-2018 under grant agreement No 633053. The views and opinions expressed herein do not necessarily reflect those of the European Commission.

- [1] Connor J W and Hastie R J 1975 Relativistic limitations on runaway electrons Nucl. Fusion 15 415.
- [2] Lehnen M et al 2015 Disruptions in ITER and strategies for their control and J. Nucl. Mater. 463 39
- [3] Reux C *et al.* 2015 Nucl. Fusion **55** 129501
- [4] Saint-Laurent F. et al., Proc. 38th EPS Conf. Plasma Physics O3 118, 2011
- [5] Hollmann E. M. et al., NF **53** 083004, 2013
- [6] Carnevale D. et al., 44th EPS, P 1.152, 2017
- [7] Esposito B. et al., *Plasma Phys. Control. Fusion* vol. **59**, ISSN: 0741-3335 (2016)
- [8] Boncagni L et al 2013 A first approach to runaway electron control in FTU Fusion Eng. Des. 8 1109
- [9] Carnevale D. et al. EX/P8-22, IAEA 2016
- [10] Hollmann E M et al., *Nucl. Fusion* **53**, 083004 (2013)
- [11] Saint-Laurent F et al., Proc. 38th EPS Conf. Plasma Physics O3 118 (2011)
- [12] G. Ramogida et al., Nuclear Materials and Energy 12 (2017) 10821087
- [13] D. Carnevale et al., Int. Journal of Adaptive Control and Signal Processing, Wiley, (2016), <https://doi.org/10.1002/acs.2679>
- [14] Carnevale D. , Galeani S., Menini L. and Sassano M., IEEE Transactions on Automatic Control, Vol 6, N. 9, p. 2416 - 2431 (2016)
- [15] Causa F et al., *Nucl. Fusion* **55**, 123021(2015)
- [16] Popović Ž. et al., Phys. of Plasmas 23, 122501 (2016)
- [17] Martín-Solis J.R. et al., Phys. of Plasmas 7, 3814 (2000)
- [18] Gospodarczyk M. et al., FED, Vol. 135 (A), pages 42-49 (2018).
- [19] Boncagni L. et al. IEEE Conf. on Decision and Control (2015), DOI 10.1109/CDC.2015.7402553.
- [20] Papp G. et al., TSDW, Princeton, NJ. 2016-07-20 - 2016-07-22, 2016
- [21] Shiraki D. et al., *Nucl. Fusion* , Vol. 58, N. 5, 2018
- [22] V.S. Vlasenkov, et al., Nucl. Fusion 13, 509 (1973)
- [23] C. Liu et al, 45th EPS (2016) P2.4005
- [24] Gál K. et al., *Plasma Phys. Control. Fusion* , 50(5):055006, March 2008
- [25] Putvinski S. et al 1997 Plasma Phys. Control. Fusion 39 B157
- [26] Riemann J. et al 2012 Phys. Plasmas 19 012507
- [27] Martín-Solis J.R. et al., J.R.Nucl. Fusion 54 (2014) 083027
- [28] Romano A. et al., 47th EPS 2018, P5.1053.
- [29] Vlasenkov V.S., Leonov V.M., Merezhin V.G. and Mukhovatov U.S. 1973 *Nucl. Fusion* 13 509.
- [30] Carnevale D. et al., 42nd EPS Conference on Plasma Physics P4.192
- [31] Eidietis N. W. et al. , Phys. Plasmas 19, 056109, 2012.
- [32] Ficker O. et al., *Nucl. Fusion* (2017), Vol. 57(7), p. 076002
- [33] Goebel R, Sanfelice R. G. and Teel A. R., Hybrid Dynamical Systems Modeling, Stability, and Robustness, Princeton University press, ISBN9781400842636
- [34] Moret J. M. et al., Fusion Eng. Design, vol 91, 2015.
- [35] Frigione D. et al 2001 Nucl. Fusion 41 1613
- [36] F. Maviglia et al. FED, Vol 96-97, pag. 668-671 (2015)
- [37] S. M. LaValle and J. J. Kuffner. In Proceedings Workshop on the Algorithmic Foundations of Robotics (2000)