

Supplement of Geosci. Model Dev., 12, 2069–2089, 2019  
<https://doi.org/10.5194/gmd-12-2069-2019-supplement>  
© Author(s) 2019. This work is distributed under  
the Creative Commons Attribution 4.0 License.



*Supplement of*

## **The quasi-equilibrium framework revisited: analyzing long-term CO<sub>2</sub> enrichment responses in plant–soil models**

**Mingkai Jiang et al.**

*Correspondence to:* Mingkai Jiang (m.jiang@westernsydney.edu.au)

The copyright of individual parts of the supplement might differ from the CC BY 4.0 License.

## ***Supplementary Materials***

The following Supporting Information is available for this article:

**Method S1** Supplementary equations used in this study

**Figure S1** Illustration of effect of allocation flexibility on plant response to elevated CO<sub>2</sub> and nitrogen deposition.

**Figure S2** Sensitivity test of varying N uptake parameters on CO<sub>2</sub> fertilization effect.

**Figure S3** Sensitivity test of varying priming effect parameters on the M-term CO<sub>2</sub> fertilization effect.

**Table S1** Relationship of NPP and leaching N rate at different timescales

**Method S1. Supplementary equations used in this study**

N:C ratio of root is linearly related to N:C ratio of leaf, as:

$$n_r = 0.7 n_f \quad (\text{Eq. S1})$$

N:C ratio of wood, if variable, is also linearly related to N:C ratio of leaf, as:

$$n_w = 0.005 n_f \quad (\text{Eq. S2})$$

N:C ratio of leaf litter is related to leaf litter as:

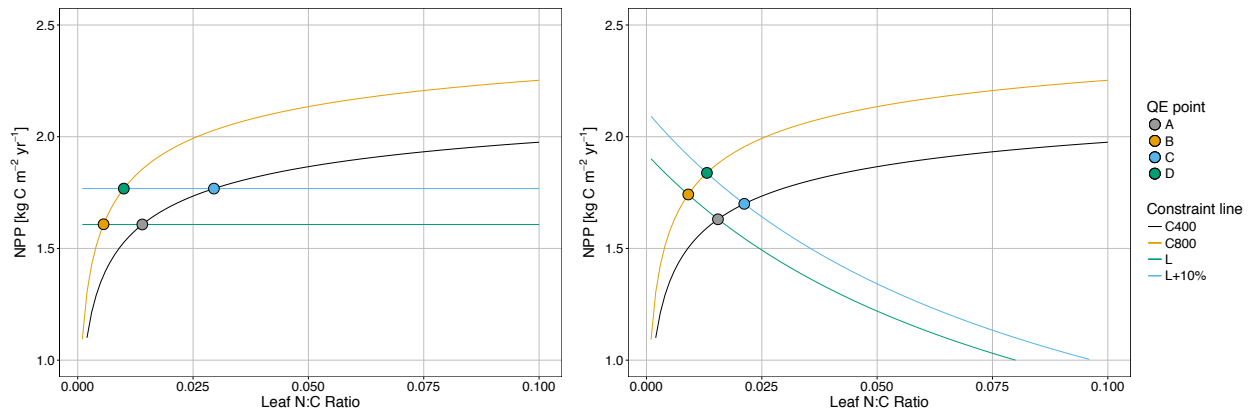
$$n_{fl} = 0.5 n_f \quad (\text{Eq. S3})$$

Following McMurtrie et al. (2000), nitrogen use efficiency is defined as:

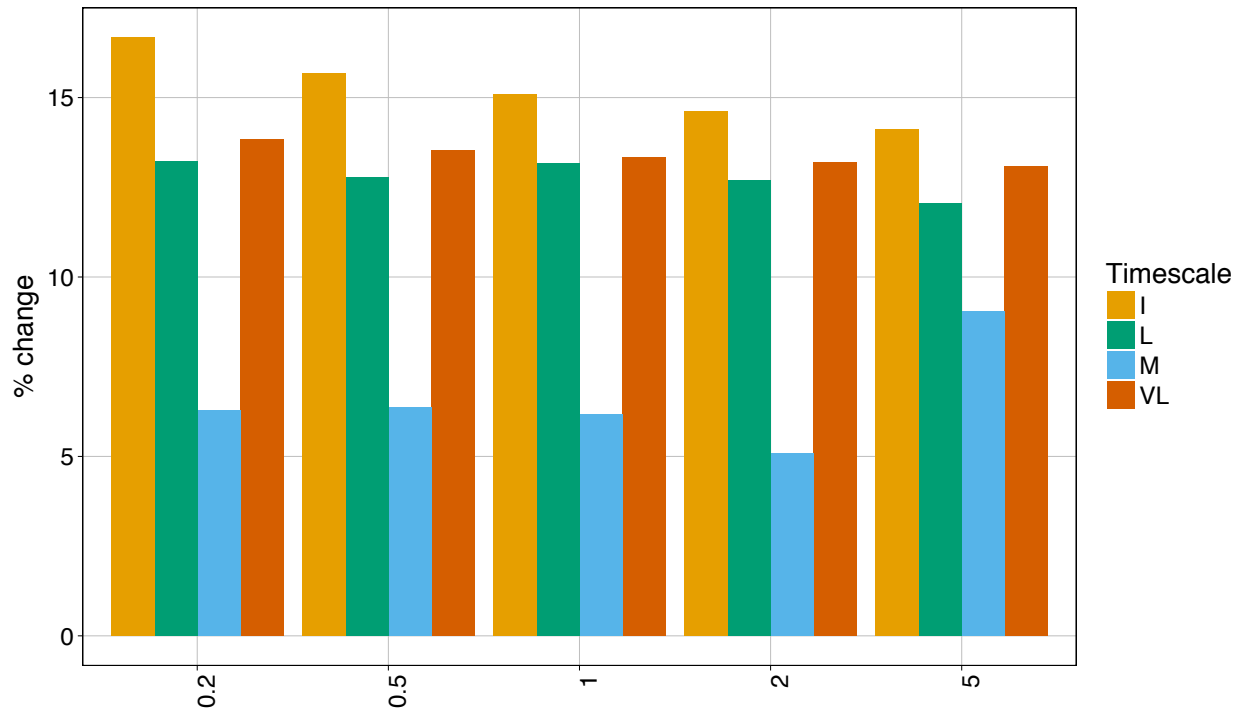
$$NUE = 1/(a_f n_f + a_w n_w + a_r n_r) \quad (\text{Eq. S4})$$

**Table S1** Relationship of NPP ( $\text{kg m}^{-2} \text{yr}^{-1}$ ) and leaching N rate ( $N_{\text{loss}}$ ,  $\text{kg m}^{-2} \text{yr}^{-1}$ ) at different timescales, assuming explicit mineral N pool. VL400 is the very long term timescale under  $\text{CO}_2 = 400$  ppm, and  $M_{800}$ ,  $L_{800}$  and  $VL_{800}$  are medium, long, and very long term equilibrium point under  $\text{CO}_2 = 800$  ppm. Leaching rate is assumed at  $0.05 \text{ yr}^{-1}$ , which is assumed to be the sum of all N lost from the system (i.e. leaching, denitrification, etc.). Detailed derivations and assumptions provided in Section 3.2 of the manuscript.

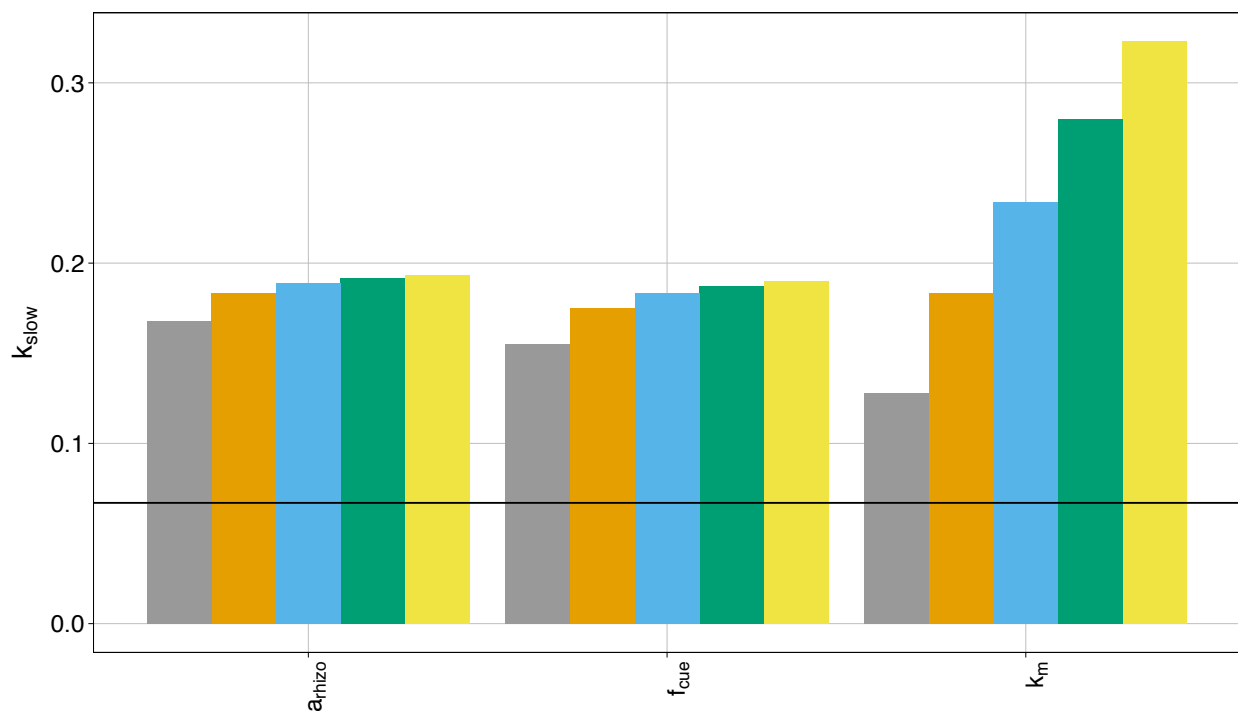
Timescale	NPP ( $\text{kg m}^{-2} \text{yr}^{-1}$ )	$N_{\text{loss}}$ ( $\text{kg m}^{-2} \text{yr}^{-1}$ )
VL <sub>400</sub>	1.68	0.4
M <sub>800</sub>	1.79	0.23
L <sub>800</sub>	1.90	0.395
VL <sub>800</sub>	1.91	0.4



**Figure S1** Illustration of effect of allocation flexibility on plant response to elevated CO<sub>2</sub> and nitrogen deposition, with a) as no coupling between allocation of leaf and wood, and b) linear coupling between leaf and wood allocation. No coupling assumes that allocation to wood ( $a_w$ ) = 0.6, and allocation to leaf ( $a_f$ ) = 0.2. Linear coupling assumes the same  $a_f$ , but  $a_w = 3a_f$ . The detailed derivations are shown in Medlyn and Dewar (1996). C400 and C800 are the photosynthetic constraint curves at CO<sub>2</sub> = 400 (aCO<sub>2</sub>) and 800 ppm (eCO<sub>2</sub>), respectively. L and L+10% are the long-term soil recycling constraint under ambient and ambient + 10% nitrogen deposition rate. Point A is the equilibrium point between C400 and L, point B is the equilibrium point between C800 and L, C is equilibrium point between C400 and L+10%, and D is equilibrium point between C800 and L+10%. The graph shows that linear coupling of  $a_f$  and  $a_w$  resulted in more responsive NPP to eCO<sub>2</sub> even if N deposition does not change, whereas no coupling between  $a_f$  and  $a_w$  has no effect of CO<sub>2</sub> on production, unless N deposition increases.



**Figure S2** Sensitivity test of varying nitrogen uptake coefficient on the CO<sub>2</sub> fertilization effect (% change) at various equilibrium points. Nitrogen uptake coefficient are 0.2, 0.5, 1, 2 and 5 yr<sup>-1</sup>. I: instantaneous, M: medium term, L: long term, VL: very long term.



**Figure S3** Sensitivity test of varying priming effect parameters on the decomposition rate of slow soil organic matter pool ( $k_{slow}$ ). Parameters varied are allocation coefficient to rhizosphere ( $a_{rhizo}$ ), microbial carbon use efficiency ( $f_{cue}$ ), and scaling factor ( $k_m$ ). From left to right, value ranges are: 0.1, 0.2, 0.3, 0.4, and 0.5 for  $a_{rhizo}$ , 0.1, 0.2, 0.3, 0.4, and 0.5 for  $f_{cue}$ , and 1, 2, 3, 4, 5 for  $k_m$ . Default values are, Black horizontal line is the existing  $k_{slow}$  value, before introducing priming effect.