

TEICHMÜLLER THEORY AND COLLAPSE OF FLAT MANIFOLDS

RENATO G. BETTIOL, ANDRZEJ DERDZINSKI, AND PAOLO PICCIONE

ABSTRACT. We provide an algebraic description of the Teichmüller space and moduli space of flat metrics on a closed manifold or orbifold and study its boundary, which consists of (isometry classes of) flat orbifolds to which the original object may collapse. It is also shown that every closed flat orbifold can be obtained by collapsing closed flat manifolds, and the collapsed limits of closed flat 3-manifolds are classified.

1. INTRODUCTION

A fundamental question in Riemannian geometry is whether there exist deformations of a given manifold that preserve certain curvature conditions and, if so, what is the nature of the limiting spaces. In this paper, we study how flat manifolds and flat orbifolds can be deformed while keeping them flat; and, in particular, how they collapse and what are the possible limits.

The Gromov-Hausdorff limit of a sequence of closed flat manifolds is clearly a flat Alexandrov space, that is, it has curvature bounded both from above and from below by zero, in triangle comparison sense. Our first result implies that the only singularities that may arise in such collapsed flat limits are the mildest possible, and that any flat space with singularities of this type admits a smooth flat resolution:

THEOREM A. *The Gromov-Hausdorff limit of a sequence of closed flat manifolds is a closed flat orbifold. Conversely, every closed flat orbifold is the Gromov-Hausdorff limit of a sequence of closed flat manifolds.*

The formation of orbifold singularities in the collapse of smooth flat manifolds can be easily seen already in dimension 2. Consider flat Klein bottles as rectangles with the usual boundary identifications. The Gromov-Hausdorff limit obtained by shrinking the lengths of a pair of opposite sides is either S^1 or a closed interval (a flat 1-orbifold), depending on whether the identification of these sides preserves or reverses orientation.

A simple diagonal argument, combined with Theorem A, implies that the collection of closed flat orbifolds is closed in the Gromov-Hausdorff topology. In light of the fact that every object in this collection is the limit of smooth flat manifolds, it would be interesting to determine whether every orbifold with $\text{sec} \geq 0$ is the limit of manifolds with $\text{sec} \geq 0$; see Remark 2.1. An important and currently open question is whether every finite-dimensional Alexandrov space with $\text{curv} \geq K$ is the limit of smooth manifolds with $\text{sec} \geq K$. In this context, recall that Alexandrov spaces of dimension 3 and 4 are homeomorphic to orbifolds [18, 22].

Analyzing deformations and limits of flat orbifolds leads to investigating the moduli space $\mathcal{M}_{\text{flat}}(\mathcal{O})$ of flat metrics on a fixed flat orbifold \mathcal{O} and its ideal boundary. The nature of this moduli space is very reminiscent of the classical Teichmüller theory for hyperbolic surfaces, in that $\mathcal{M}_{\text{flat}}(\mathcal{O})$ is the quotient of a *Teichmüller space* $\mathcal{T}_{\text{flat}}(\mathcal{O})$, diffeomorphic to an open ball, under the action of a (discrete) mapping class group. This fits the picture of a deformation theory for geometric structures of much larger scope pioneered by Thurston [33] and further developed in [3, 19]; see Subsection 4.3. Around 45 years ago, Wolf [34] identified the moduli space $\mathcal{M}_{\text{flat}}(M)$ of flat metrics on a flat manifold M . However, even in this special case, a systematic and unified treatment of the Teichmüller theory of flat manifolds does not seem to be available in the literature, despite some scattered results, e.g. [25, 26]. Towards this goal, we establish the following algebraic description of the Teichmüller space of flat metrics on a flat orbifold, which provides a straightforward method to compute it:

THEOREM B. *Let \mathcal{O} be a closed flat orbifold, and denote by W_i , $1 \leq i \leq l$, the isotypic components of the orthogonal representation of its holonomy group. Each W_i consists of m_i copies of the same irreducible*

Date: May 27, 2018.

2010 Mathematics Subject Classification. 22E40, 32G15, 53C15, 53C24, 53C29, 57M60, 57R18, 58D17, 58D27.

representation, and we write \mathbb{K}_i for \mathbb{R} , \mathbb{C} , or \mathbb{H} , according to this irreducible being of real, complex, or quaternionic type. The Teichmüller space $\mathcal{T}_{\text{flat}}(\mathcal{O})$ is diffeomorphic to:

$$\mathcal{T}_{\text{flat}}(\mathcal{O}) \cong \prod_{i=1}^l \frac{\text{GL}(m_i, \mathbb{K}_i)}{\text{O}(m_i, \mathbb{K}_i)},$$

where $\text{GL}(m, \mathbb{K})$ is the group of \mathbb{K} -linear automorphisms of \mathbb{K}^m and $\text{O}(m, \mathbb{K})$ stands for $\text{O}(m)$, $\text{U}(m)$, or $\text{Sp}(m)$, when \mathbb{K} is, respectively, \mathbb{R} , \mathbb{C} , or \mathbb{H} . In particular, $\mathcal{T}_{\text{flat}}(\mathcal{O})$ is real-analytic and diffeomorphic to \mathbb{R}^d .

The dimension $d = \dim \mathcal{T}_{\text{flat}}(\mathcal{O})$ is easily computed as the sum of the dimensions $d_i \geq 1$ of the factors $\text{O}(m_i, \mathbb{K}_i) \backslash \text{GL}(m_i, \mathbb{K}_i) \cong \mathbb{R}^{d_i}$, $1 \leq i \leq l$, which are given by:

$$d_i = \begin{cases} \frac{1}{2}m_i(m_i + 1), & \text{if } \mathbb{K}_i = \mathbb{R}, \\ m_i^2, & \text{if } \mathbb{K}_i = \mathbb{C}, \\ m_i(2m_i - 1), & \text{if } \mathbb{K}_i = \mathbb{H}. \end{cases}$$

In particular, since the holonomy representation of a flat manifold is reducible [23], see Theorem 2.4, it follows that $l \geq 2$, and hence $d \geq 2$. This implies the following:

COROLLARY C. *Every flat manifold admits nonhomothetic flat deformations.*

The situation is different for flat orbifolds, which can be *rigid*. Examples of orbifolds with irreducible holonomy representation, i.e., $l = 1$, which consequently admit no nonhomothetic flat deformations, already appear in dimension 2: for instance, flat equilateral triangles; see Subsection 5.3 for more examples.

Since flat orbifolds are locally isometric to Euclidean spaces, the most interesting aspects of their geometry are clearly global. Thus, it is not surprising that issues related to holonomy play a central role in developing this Teichmüller theory. As an elementary case illustrating Theorem B, consider the complete absence of holonomy: flat n -dimensional tori T^n can be realized as parallelepipeds spanned by linearly independent vectors $v_1, \dots, v_n \in \mathbb{R}^n$, with opposite faces identified. Flat metrics on T^n correspond to different choices of v_1, \dots, v_n , up to ambiguities arising from rigid motions in \mathbb{R}^n , or relabelings and subdivisions of the parallelepiped into smaller pieces with boundary identifications. More precisely, it is not difficult to see that $\mathcal{M}_{\text{flat}}(T^n) = \text{O}(n) \backslash \text{GL}(n, \mathbb{R}) / \text{GL}(n, \mathbb{Z})$. In this case, $\mathcal{T}_{\text{flat}}(T^n) = \text{O}(n) \backslash \text{GL}(n, \mathbb{R}) \cong \mathbb{R}^{n(n+1)/2}$ is the space of inner products on \mathbb{R}^n , and $\mathcal{M}_{\text{flat}}(T^n) = \mathcal{T}_{\text{flat}}(T^n) / \text{GL}(n, \mathbb{Z})$; see Subsection 5.1 for details.

Isometry classes of collapsed limits of T^n correspond to points in the ideal boundary of $\mathcal{M}_{\text{flat}}(T^n)$. A more tangible object is the ideal boundary of $\mathcal{T}_{\text{flat}}(T^n)$, formed by positive-semidefinite $n \times n$ matrices and stratified by their rank k , with $0 \leq k < n$, which in a sense correspond to the k -dimensional flat tori T^k to which T^n can collapse. Nevertheless, we warn the reader that the Gromov-Hausdorff distance *does not* extend continuously to this boundary. For instance, collapsing the 2-dimensional square torus along a line of slope p/q , with $p, q \in \mathbb{Z}$, $\text{gcd}(p, q) = 1$, produces as Gromov-Hausdorff limit the circle S^1 of length $(p^2 + q^2)^{-1/2}$, while collapsing it along any nearby line with irrational slope produces as limit a single point.

Recall that there are precisely 17 affine classes of flat 2-orbifolds, corresponding to the 17 *wallpaper groups*, see for instance [14]. The underlying topological space of \mathcal{O} is a 2-manifold $|\mathcal{O}|$, possibly with boundary; namely, the disk D^2 , sphere S^2 , real projective plane $\mathbb{R}P^2$, torus T^2 , Klein bottle K^2 , cylinder $S^1 \times I$, or Möbius band M^2 . The singularities that occur in the interior are *cone points*, labeled with a positive integer $n \in \mathbb{N}$, specifying that the local group is the cyclic group $\mathbb{Z}_n \subset \text{SO}(2)$. Singularities that occur on the boundary are *corner reflectors*, labeled by a positive integer $m \in \mathbb{N}$, specifying that the local group is the dihedral group $D_m \subset \text{O}(2)$ of $2m$ elements. Following Davis [14], if a 2-orbifold \mathcal{O} has ℓ cone points labeled n_1, \dots, n_ℓ , and k corner reflectors labeled m_1, \dots, m_k , then it is denoted $|\mathcal{O}|(n_1, \dots, n_\ell; m_1, \dots, m_k)$.

By direct inspection, we verify that only 10 out of the 17 flat orbifolds of dimension 2 (see Table 1) arise as Gromov-Hausdorff limits of closed flat 3-manifolds:

THEOREM D. *The Gromov-Hausdorff limit of a sequence of closed flat 3-manifolds is either a closed flat 3-manifold, or one of the following collapsing cases: point, closed interval, circle, 2-torus, Klein bottle, Möbius band, cylinder, disk with singularities $D^2(4; 2)$, $D^2(3; 3)$, or $D^2(2, 2;)$, sphere with singularities $S^2(3, 3, 3;)$ or $S^2(2, 2, 2, 2;)$, and the real projective plane with singularities $\mathbb{R}P^2(2, 2;)$.*

The remaining 7 flat 2-orbifolds must arise as Gromov-Hausdorff limits of flat manifolds of dimensions ≥ 4 . For example, it is easy to see that a flat rectangle $D^2(; 2, 2, 2, 2)$ can be realized as the collapsed limit of a product $K^2 \times K^2$ of Klein bottles. However, there does not seem to be a readily available method to decide what is the *lowest dimension* $N(\mathcal{O})$ of a flat manifold that collapses to a given flat orbifold \mathcal{O} . Heuristically, we expect that an upper bound for $N(\mathcal{O})$ could be derived from the structure of the singular set of \mathcal{O} . For instance, adding one dimension for each cone point, one could expect to replace the rotation that fixes the cone point with a “screw motion” having a translation component in this new direction, which hence acts freely and *resolves* the cone singularity.

Another method to estimate $N(\mathcal{O})$, following the proof of Theorem A, is to estimate the lowest dimension of a flat manifold with prescribed holonomy group H isomorphic to the holonomy group of \mathcal{O} . Such a flat manifold always exists by a result of Auslander and Kuranishi [2], see Theorem 2.3, and determining its lowest dimension is a well-known open question, see Szczepański [31, Problem 1]. An answer to this problem, and consequently an upper estimate for $N(\mathcal{O})$, is available when the group H is cyclic, an elementary abelian p -group, dihedral, semidihedral, a generalized quaternion group, or a simple group $\mathrm{PSL}(2, p)$ with p prime. According to Szczepański [31], the difficulty in establishing more comprehensive results in this direction is related to the difficulty in computing the second group cohomology of H with special coefficients.

There are several other questions related to the results in this paper, two of which we would like to emphasize. The first is to characterize algebraically which isotypic components of the holonomy group of a flat manifold produce as Gromov-Hausdorff limit another flat manifold (instead of a singular flat orbifold) when collapsed. The second is to what extent our results generalize to the class of *almost flat manifolds*.

This paper is organized as follows. Preliminary facts about closed flat manifolds and flat orbifolds are recalled in Section 2, including the Bieberbach Theorems and the classification of flat 2-orbifolds. Limits of closed flat manifolds are studied in Section 3, which contains the proof of Theorem A. Section 4 deals with Teichmüller spaces and moduli spaces of flat metrics, establishing the algebraic characterization given by Theorem B. Several examples of Teichmüller spaces that can be computed by applying Theorem B are discussed in Section 5. Section 6 contains the classification of limits of flat 3-manifolds and the proof of Theorem D. Finally, Appendix A contains details on how to recognize flat 2-orbifolds given as quotients of \mathbb{R}^2 by crystallographic groups, which are used in Section 6, and Appendix B gives an alternative elementary proof that Gromov-Hausdorff limits of flat tori are (lower dimensional) flat tori.

Acknowledgements. It is a pleasure to thank Alexander Lytchak, John Harvey, Karsten Grove, and Curtis Pro for suggestions regarding equivariant Gromov-Hausdorff convergence, Burkhard Wilking for comments on realizing flat orbifolds as limits of flat manifolds, and Andrzej Szczepański for conversations about the holonomy representation of flat manifolds. Part of this work was done during a visit of the first named author to the Max Planck Institute for Mathematics in Bonn, Germany, and of the third named author to the University of Notre Dame, USA; they would like to thank these institutions for providing excellent working conditions. The second and third named authors are partially supported by a FAPESP-OSU 2015 Regular Research Award (FAPESP grant: 2015/50315-3).

2. FLAT MANIFOLDS AND FLAT ORBIFOLDS

In this section, we recall basic facts about closed flat manifolds and flat orbifolds.

2.1. Orbifolds. A *Riemannian orbifold* \mathcal{O} is a metric space which is locally isometric to orbit spaces of isometric actions of finite groups on Riemannian manifolds. Geometric properties, such as curvature, may be defined via these local isometries. Following Thurston [33], \mathcal{O} is called *good* if it is globally isometric to such an orbit space. Any orbifold \mathcal{O} has a *universal orbifold covering* $\tilde{\mathcal{O}}$, with a discrete isometric action by deck transformations of its *orbifold fundamental group* $\pi_1^{orb}(\mathcal{O})$. The orbifold \mathcal{O} has non-empty boundary (as an Alexandrov space) if and only if $\pi_1^{orb}(\mathcal{O})$ contains a reflection, that is, an involution with fixed point set of codimension 1.

Every Riemannian orbifold \mathcal{O} of dimension n has a frame bundle $\mathrm{Fr}(\mathcal{O})$, which is a (smooth) Riemannian manifold with an almost free isometric $\mathrm{O}(n)$ -action whose orbit space is $\mathrm{Fr}(\mathcal{O})/\mathrm{O}(n) \cong \mathcal{O}$. In particular, it follows that every Riemannian orbifold is the (continuous) Gromov-Hausdorff limit of Riemannian manifolds $\{(\mathrm{Fr}(\mathcal{O}), g_t)\}_{t \geq 0}$, where g_t is the Cheeger deformation of some invariant metric with respect to the $\mathrm{O}(n)$ -action, see [1, §6.1]. For details on the basic geometry and topology of orbifolds, see [7, 14, 27, 33].

Remark 2.1. At first sight, since Cheeger deformations preserve $\text{sec} \geq 0$, the above facts may seem to provide an approach to solving the question in the Introduction about realizing an orbifold \mathcal{O} with $\text{sec} \geq 0$ as a limit of manifolds with $\text{sec} \geq 0$. However, it is in general difficult to endow $\text{Fr}(\mathcal{O})$ with $\text{sec} \geq 0$. This problem is related to the well-known *converse question* to the Soul Theorem of Gromoll and Meyer, of which vector bundles over closed manifolds with $\text{sec} \geq 0$ admit metrics with $\text{sec} \geq 0$.

In the very special case of a spherical orbifold $\mathcal{O} = S^n/\Gamma$, such as the spherical suspension of $\mathbb{R}P^2$, the frame bundle $\text{Fr}(\mathcal{O}) = \text{O}(n+1)/\Gamma$ clearly admits $\text{sec} \geq 0$. Thus, Cheeger deformations allow to approximate \mathcal{O} by manifolds with $\text{sec} \geq 0$. However, it is unclear whether that can be done keeping the *same optimal lower curvature bound* $\text{sec} \geq 1$ of the limit \mathcal{O} .

2.2. Bieberbach Theorems. A discrete group π of isometries of \mathbb{R}^n is called *crystallographic* if it has compact fundamental domain in \mathbb{R}^n , so that $\mathcal{O} = \mathbb{R}^n/\pi$ is a closed flat orbifold. A torsion-free crystallographic group π is called a *Bieberbach group*, and in this case the action of π on \mathbb{R}^n is free, so $M = \mathbb{R}^n/\pi$ is a closed flat manifold. Conversely, by the Killing-Hopf Theorem, it is well-known that if a closed manifold M of dimension $n \geq 2$ carries a flat Riemannian metric, then its universal covering is \mathbb{R}^n and its fundamental group is isomorphic to a Bieberbach group. Similarly, by a result of Thurston [33] (see [29]), if a closed Riemannian orbifold \mathcal{O} of dimension $n \geq 2$ is flat, then it is good, its universal orbifold covering is \mathbb{R}^n and its orbifold fundamental group is isomorphic to a crystallographic group. In all of these cases, we denote by g_π the flat metric for which the quotient map $(\mathbb{R}^n, g_{\text{flat}}) \rightarrow (\mathbb{R}^n/\pi, g_\pi)$ is a Riemannian covering.

Denote by $\text{Aff}(\mathbb{R}^n) := \text{GL}(n) \ltimes \mathbb{R}^n$ the group of affine transformations of \mathbb{R}^n , and by $\text{Iso}(\mathbb{R}^n) := \text{O}(n) \ltimes \mathbb{R}^n$ be the subgroup of rigid motions, that is, isometries of the Euclidean space $(\mathbb{R}^n, g_{\text{flat}})$. We write elements of $\text{Aff}(\mathbb{R}^n)$ and $\text{Iso}(\mathbb{R}^n)$ as pairs (A, v) , with $A \in \text{GL}(n)$ or $\text{O}(n)$, and $v \in \mathbb{R}^n$. The group operation is given by

$$(2.1) \quad (A, v) \cdot (B, w) = (AB, Aw + v),$$

and clearly $(A, v)^{-1} = (A^{-1}, -A^{-1}v)$. The natural action of these groups on \mathbb{R}^n is given by $(A, v) \cdot w = Aw + v$.

Consider the projection homomorphism:

$$\mathfrak{r} : \text{Aff}(\mathbb{R}^n) \longrightarrow \text{GL}(n), \quad \mathfrak{r}(A, v) = A.$$

Given a crystallographic group $\pi \subset \text{Iso}(\mathbb{R}^n)$, its image $H_\pi := \mathfrak{r}(\pi)$ is called the *holonomy* of π . Let L_π denote the kernel of the restriction of \mathfrak{r} to π , so that we have a short exact sequence

$$(2.2) \quad 1 \longrightarrow L_\pi \longrightarrow \pi \longrightarrow H_\pi \longrightarrow 1.$$

The group L_π , which consists of elements of the form (Id, v) , with $v \in \mathbb{R}^n$, is the maximal normal abelian subgroup of π and is naturally identified with a subgroup of \mathbb{R}^n .

The *Bieberbach Theorems* [5, 6], see also [9, 11, 32], provide the essential facts about the groups in (2.2) and have equivalent algebraic and geometric formulations:

BIEBERBACH THEOREMS (ALGEBRAIC VERSION). *The following hold:*

- I. *If $\pi \subset \text{Iso}(\mathbb{R}^n)$ is a crystallographic group, then H_π is finite and L_π is a lattice that spans \mathbb{R}^n .*
- II. *Let $\pi, \pi' \subset \text{Iso}(\mathbb{R}^n)$ be crystallographic subgroups. If there exists an isomorphism $\phi: \pi \rightarrow \pi'$, then ϕ is a conjugation in $\text{Aff}(\mathbb{R}^n)$, i.e., there exists $(A, v) \in \text{Aff}(\mathbb{R}^n)$ such that $\phi(B, w) = (A, v) \cdot (B, w) \cdot (A, v)^{-1}$ for all $(B, w) \in \pi$.*
- III. *For all n , there are only finitely many isomorphism classes of crystallographic subgroups of $\text{Iso}(\mathbb{R}^n)$.*

BIEBERBACH THEOREMS (GEOMETRIC VERSION). *The following hold:*

- I. *If (\mathcal{O}, g) is a closed flat orbifold with $\dim \mathcal{O} = n$, then (\mathcal{O}, g) is covered by a flat torus of dimension n , and the covering map is a local isometry.*
- II. *If \mathcal{O} and \mathcal{O}' are closed flat orbifolds of the same dimension with isomorphic fundamental groups, then \mathcal{O} and \mathcal{O}' are affinely equivalent.*
- III. *For all n , there are only finitely many affine equivalence classes of closed flat orbifolds of dimension n .*

The list of (affine equivalence classes of) closed flat orbifolds of dimension n , which, by the above, is in bijective correspondence with the list of (affine conjugate classes of) crystallographic groups in $\text{Iso}(\mathbb{R}^n)$, is known for some small values of n :

- If $n = 2$, there are 17 examples, corresponding to the 17 wallpaper groups. They are listed in Table 1, using the notation for cone points and corner reflectors as in the Introduction (following Davis [14]). The corresponding wallpaper groups π are identified by their crystallographic notation, followed by Conway's notation [13] in parenthesis, and their holonomy group H_π is also indicated;

TABLE 1. Flat 2-dimensional orbifolds

#	Orbifold \mathbb{R}^2/π	Topology	Geometry	π	H_π
(1)	$D^2(; 3, 3, 3)$	D^2	equilateral triangle	p3m1 (*333)	D_3
(2)	$D^2(; 2, 3, 6)$	D^2	triangle with angles $\frac{\pi}{2}, \frac{\pi}{3}, \frac{\pi}{6}$	p6m (*632)	D_6
(3)	$D^2(; 2, 4, 4)$	D^2	triangle with angles $\frac{\pi}{2}, \frac{\pi}{4}, \frac{\pi}{4}$	p4m (*442)	D_4
(4)	$D^2(; 2, 2, 2, 2)$	D^2	rectangle	pmm (*2222)	D_2
(5)	$D^2(2; 2, 2)$	D^2	quotient of a square by group \mathbb{Z}_2 generated by the rotation of π around its center	cmm (2*22)	D_2
(6)	$D^2(4; 2)$	D^2	quotient of a square by group \mathbb{Z}_4 generated by the rotation of $\frac{\pi}{2}$ around its center	p4g (4*2)	D_4
(7)	$D^2(3; 3)$	D^2	quotient of an equilateral triangle by group \mathbb{Z}_3 generated by the rotation of $\frac{\pi}{3}$ around its center	p31m (3*3)	D_3
(8)	$D^2(2, 2;)$	D^2	<i>half pillowcase</i> : quotient of $S^2(2, 2, 2, 2;)$ by reflection about the equator	pmg (22*)	D_2
(9)	$S^2(2, 2, 2, 2;)$	S^2	<i>pillowcase</i> : Alexandrov double of rectangle	p2 (2222)	D_2
(10)	$S^2(3, 3, 3;)$	S^2	<i>333-turnover</i> : Alexandrov double of $D^2(; 3, 3, 3)$	p3 (333)	\mathbb{Z}_3
(11)	$S^2(2, 3, 6;)$	S^2	<i>236-turnover</i> : Alexandrov double of $D^2(; 2, 3, 6)$	p6 (632)	\mathbb{Z}_6
(12)	$S^2(2, 4, 4;)$	S^2	<i>244-turnover</i> : Alexandrov double of $D^2(; 2, 4, 4)$	p4 (442)	D_4
(13)	$\mathbb{R}P^2(2, 2;)$	$\mathbb{R}P^2$	quotient of $S^2(2, 2, 2, 2;)$ by antipodal map	pgg (22 \times)	D_2
(14)	T^2	T^2	2-torus	p1 (\circ)	$\{1\}$
(15)	K^2	K^2	Klein bottle	pg ($\times \times$)	\mathbb{Z}_2
(16)	$S^1 \times I$	$S^1 \times I$	Cylinder	pm (**)	\mathbb{Z}_2
(17)	M^2	M^2	Möbius band	cm (* \times)	\mathbb{Z}_2

- If $n = 3$, there are 219 examples, corresponding to the 219 space groups classified (independently) by Barlow, Fedorov, and Schönflies, in the 1890s;
- If $n = 4$, there are 4,783 examples classified by Brown, Bülow, Neubüser, Wondratschek, and Zassenhaus [8];
- If $n = 5$ and $n = 6$, there are respectively 222,018 and 28,927,922 examples, obtained with the computer program CARAT, see Plesken and Schulz [30].

The sublist of (affine equivalence classes of) closed flat manifolds of dimension n is also known for the above values of n , and is considerably shorter:

- If $n = 2$, there are 2 examples: the torus T^2 and the Klein bottle K^2 ;
- If $n = 3$, there are 10 examples, obtained by Hantzsche and Wendt [21], see Wolf [35, Thm. 3.5.5, 3.5.9];
- If $n = 4$, there are 74 examples, obtained by Calabi, see Wolf [35, Sec. 3.6];
- If $n = 5$ and $n = 6$, there are respectively 1,060 and 38,746 examples, obtained with the computer program CARAT, see Cid and Schulz [12].

2.3. Holonomy group. Let $\pi \subset \text{Iso}(\mathbb{R}^n)$ be a crystallographic group and consider its holonomy group H_π .

Lemma 2.2. *The lattice $L_\pi \subset \mathbb{R}^n$ is invariant under the orthogonal action of H_π .*

Proof. This is an easy consequence of normality of L_π in π . Namely, given $w \in L_\pi$ and $A \in H_\pi$, let $v \in \mathbb{R}^n$ be such that $(A, v) \in \pi$. Then, by normality, there exists $w' \in L_\pi$ such that $(A, Aw + v) = (A, v) \cdot (\text{Id}, w) = (\text{Id}, w') \cdot (A, v) = (A, w' + v)$, i.e., $Aw = w'$. Thus, $H_\pi(L_\pi) \subset L_\pi$. \square

If $\pi \subset \text{Iso}(\mathbb{R}^n)$ is a Bieberbach group, then the orthogonal representation of its holonomy H_π on \mathbb{R}^n is identified with the holonomy representation of the flat manifold $M = \mathbb{R}^n/\pi$. In particular, notice that any two flat metrics on M have isomorphic holonomy groups. Furthermore, the Betti numbers of M are given by $b_k(M) = \dim(\wedge^k \mathbb{R}^n)^{H_\pi}$, that is, the dimension of the subspace of $\wedge^k \mathbb{R}^n$ fixed by the induced orthogonal representation of H_π .

The closed flat manifold $M = \mathbb{R}^n/\pi$ can also be seen as the orbit space of a free isometric action of H_π on the flat torus \mathbb{R}^n/L_π . Namely, since L_π is normal in π , the projection map $\mathbb{R}^n/L_\pi \rightarrow M$ is a regular (Riemannian) covering whose group of deck transformations is identified with $\pi/L_\pi \cong H_\pi$. In particular, it follows that $\text{Vol}(M, g_\pi) = |H_\pi|^{-1} \text{Vol}(\mathbb{R}^n/L_\pi)$.

The free action of H_π on \mathbb{R}^n/L_π with orbit space M can be described explicitly. First, note that since L_π is H_π -invariant (Lemma 2.2), the natural action of H_π on \mathbb{R}^n descends to an action of H_π on the torus \mathbb{R}^n/L_π . Given $A \in H_\pi$, denote by $\bar{A}: \mathbb{R}^n/L_\pi \rightarrow \mathbb{R}^n/L_\pi$ the induced map, and let $v \in \mathbb{R}^n$ be such that $(A, v) \in \pi$. Such v is unique, up to translations in L_π , for if $v, v' \in \mathbb{R}^n$ are such that $(A, v), (A, v') \in \pi$, then $(A, v) \cdot (A, v')^{-1} = (\text{Id}, v - v') \in L_\pi$, i.e., $v - v' \in L_\pi$. We thus have a map $H_\pi \ni A \mapsto v_A \in \mathbb{R}^n/L_\pi$, defined by $v_A := v + L_\pi$, where $(A, v) \in \pi$. Clearly, $v_{A \cdot A'} = \bar{A}(v_{A'}) + v_A$ for all $A, A' \in H_\pi$, where $+$ is the group operation on \mathbb{R}^n/L_π . With this notation, the free action of H_π on \mathbb{R}^n/L_π is:

$$A \cdot \bar{x} := \bar{A}(\bar{x}) + v_A, \quad A \in H_\pi, \bar{x} \in \mathbb{R}^n/L_\pi.$$

We conclude this with two very useful results about holonomy groups H_π . First, by a celebrated theorem of Auslander and Kuranishi [2], see also Wolf [35], there are no obstructions on H_π ; more precisely:

Theorem 2.3. *Any finite group is the holonomy group H_π of a closed flat manifold.*

Second, Hiss and Szczepański [23] established the following remarkable result:

Theorem 2.4. *For any Bieberbach group $\pi \subset \text{Iso}(\mathbb{R}^n)$, the orthogonal action of H_π on \mathbb{R}^n is reducible.*

Remark 2.5. The proof of Theorem 2.4 is rather involved, however it is worth observing that it becomes elementary if H_π has nontrivial center. Namely, since the action of π on \mathbb{R}^n is free, given $(A, v) \in \pi$, $(A, v) \neq (\text{Id}, 0)$, there does not exist $x \in \mathbb{R}^n$ such that $Ax + v = x$, i.e., $(A - \text{Id})x = -v$. Thus, $(A - \text{Id})$ is not invertible, hence 1 is an eigenvalue of A . This gives a nontrivial orthogonal decomposition $\mathbb{R}^n = \ker(A - \text{Id}) \oplus \text{im}(A - \text{Id})$, and $\ker(A - \text{Id})$ is clearly H_π -invariant if $A \in Z(H_\pi)$.

The hypothesis that π is torsion-free is essential in Theorem 2.4. In fact, it is easy to find crystallographic groups $\pi \subset \text{Iso}(\mathbb{R}^n)$ whose holonomy H_π acts irreducibly on \mathbb{R}^n , see Subsection 5.3 for examples with $n = 2$.

3. SEQUENCES OF FLAT MANIFOLDS

In this section, we analyze sequences of closed flat manifolds, proving Theorem A.

3.1. Gromov-Hausdorff distance. A map $f: X \rightarrow Y$ between metric spaces, not necessarily continuous, is called an ε -approximation if an ε -neighborhood of its image covers all of Y and $|d_X(p, q) - d_Y(f(p), f(q))| \leq \varepsilon$ for all $p, q \in X$. The *Gromov-Hausdorff distance* between two compact metric spaces X and Y is the infimum of $\varepsilon > 0$ such that there exist ε -approximations $X \rightarrow Y$ and $Y \rightarrow X$. This distance function between (isometry classes of) compact metric spaces and the corresponding notion of convergence were pioneered by Gromov [20].

Gromov-Hausdorff convergence can be easily extended to *pointed* complete metric spaces, by declaring that (X_i, p_i) converges to (X, p) if, for all $r > 0$, the ball of radius r in X_i centered at p_i Gromov-Hausdorff converges to the ball of radius r in X centered at p . Furthermore, an *equivariant* extension of this notion was introduced by Fukaya [16] and achieved its final form with Fukaya and Yamaguchi [17].

3.2. Converging sequences of flat manifolds. We begin by analyzing the case of flat tori:

Proposition 3.1. *The Gromov-Hausdorff limit of a sequence $\{(T^m, g_i)\}_{i \in \mathbb{N}}$ of flat tori with bounded diameter is a flat torus (T^m, h) of dimension $0 \leq m \leq n$.*

Proof. The above result follows from a general construction of limits of isometric group actions due to Fukaya and Yamaguchi [17, Prop. 3.6]. Namely, let $\{(X_i, p_i)\}_{i \in \mathbb{N}}$ be a sequence of pointed complete Riemannian manifolds (more generally, pointed locally compact length spaces) that Gromov-Hausdorff converges to a limit space (X, p) and $G_i \subset \text{Iso}(X_i)$ be closed subgroups of isometries. Then there is a closed subgroup $G \subset \text{Iso}(X)$ such that $\{(X_i, G_i, p_i)\}_{i \in \mathbb{N}}$ converges in equivariant Gromov-Hausdorff sense to (X, G, p) . In particular, the orbit spaces $\{(X_i/G_i, [p_i])\}_{i \in \mathbb{N}}$ Gromov-Hausdorff converge to the orbit space $(X/G, [p])$.

Each flat torus (T^n, g_i) is isometric to \mathbb{R}^n/G_i , where $G_i \subset \text{Iso}(\mathbb{R}^n)$ is a lattice, that is, a discrete subgroup consisting only of translations. Applying the aforementioned result to the constant sequence $(X_i, p_i) = (\mathbb{R}^n, 0)$ and the lattices G_i , it follows that there exists a closed subgroup $G \subset \text{Iso}(\mathbb{R}^n)$ such that (T^n, g_i) converge in Gromov-Hausdorff sense to \mathbb{R}^n/G . We claim that this limit group $G \subset \text{Iso}(\mathbb{R}^n)$ is a degenerate lattice, that is, $G \cong L \times \mathbb{R}^{n-m}$ for some $0 \leq m \leq n$, where $L \subset \text{Iso}(\mathbb{R}^m)$ is a lattice, hence \mathbb{R}^n/G is isometric to the flat torus $T^m = \mathbb{R}^m/L$.

To prove this claim, which concludes the proof of the Proposition, we use that *metric* properties of the isometries G_i are preserved in the limit G by its inductive-projective construction. Translations are metrically characterized as isometries that have constant displacement, i.e., isometries that move all points in \mathbb{R}^n by the same distance. Since all elements of G_i satisfy this property, for all $i \in \mathbb{N}$, also all elements of G satisfy it and are hence translations. Moreover, the only *closed* subgroups G of $\text{Iso}(\mathbb{R}^n)$ that consist of translations are degenerate lattices in subspaces of \mathbb{R}^n . Indeed, the identity connected component $G_0 \cong \mathbb{R}^{n-m}$ is a subspace of \mathbb{R}^n and the quotient $L = G/G_0$ is discrete and abelian, hence a lattice in a subspace $V \subset \mathbb{R}^n$ with $V \cap \mathbb{R}^{n-m} = \{0\}$. As the limit space \mathbb{R}^n/G is compact, since \mathbb{R}^n/G_i have bounded diameter, we have that $V \cong \mathbb{R}^m$ is a complement of $G_0 \cong \mathbb{R}^{n-m}$. This proves that $G \cong L \times \mathbb{R}^{n-m}$ is a degenerate lattice in \mathbb{R}^n . \square

By the Bieberbach Theorems, there are only finitely many diffeomorphism types of closed flat n -manifolds for any given $n \in \mathbb{N}$. Thus, up to subsequences, we may assume that any Gromov-Hausdorff converging sequence of closed flat n -manifolds is of the form $\{(M, g_i)\}_{i \in \mathbb{N}}$, where g_i are flat metrics on a fixed manifold M .

Proposition 3.2. *Let $\{(M, g_i)\}_{i \in \mathbb{N}}$ be a Gromov-Hausdorff sequence of closed flat n -manifolds that converges to a limit metric space (X, d_X) . Then (X, d_X) is isometric to a flat orbifold T^m/H , where $0 \leq m \leq n$ and $H \subset \text{O}(n)$ is a finite subgroup conjugate to the holonomy group of (M, g_i) that acts isometrically on T^m .*

Proof. Without loss of generality, we may assume that the holonomy groups of (M, g_i) are all equal to $H \subset \text{O}(n)$, see Corollary 4.10. Let $(T^n, \tilde{g}_i) \rightarrow (M, g_i)$ be the Riemannian coverings by flat tori whose group of deck transformations is H . Then,

$$\frac{1}{|H|} \text{diam}(T^n, \tilde{g}_i) \leq \text{diam}(M, g_i) \leq \text{diam}(T^n, \tilde{g}_i).$$

Therefore, $\text{diam}(T^n, \tilde{g}_i) \leq 2|H| \text{diam}(X, d_X)$ and, by Gromov's Compactness Theorem and Proposition 3.1, there is a subsequence of $\{(T^n, \tilde{g}_i)\}_{i \in \mathbb{N}}$ that Gromov-Hausdorff converges to a flat torus (T^m, h) , $0 \leq m \leq n$. Up to passing to a new subsequence, this convergence is in equivariant Gromov-Hausdorff sense with respect to the isometric H -actions, by Fukaya and Yamaguchi [17, Prop. 3.6]. Thus, the orbit spaces $\{(T^n, \tilde{g}_i)/H\}_{i \in \mathbb{N}}$, which are isometric to $\{(M, g_i)\}_{i \in \mathbb{N}}$, Gromov-Hausdorff converge to the orbit space $(T^m, h)/H$. \square

To finish the proof of Theorem A, it only remains to prove the following:

Proposition 3.3. *Any flat orbifold is the Gromov-Hausdorff limit of a sequence of closed flat manifolds.*

Proof. Let $\mathcal{O} = \mathbb{R}^n/\pi_{\mathcal{O}}$ be a flat orbifold, with orbifold fundamental group given by the crystallographic group $\pi_{\mathcal{O}} \subset \text{Iso}(\mathbb{R}^n)$. By Theorem 2.3 (of Auslander and Kuranishi [2]), there exists a closed flat manifold $M = \mathbb{R}^m/\pi_M$ whose fundamental group $\pi_M \subset \text{Iso}(\mathbb{R}^m)$ is a Bieberbach group with the same holonomy, that is, $H_{\pi_M} \cong H_{\pi_{\mathcal{O}}}$. Denote this finite group by H , and consider its (isometric) actions on the flat tori $T^n = \mathbb{R}^n/L_{\pi_{\mathcal{O}}}$ and $T^m = \mathbb{R}^m/L_{\pi_M}$. Clearly, the orbit spaces of these actions are $T^n/H = \mathcal{O}$ and $T^m/H = M$. Since the H -action on T^m is free, so is the diagonal H -action on the product $T^n \times T^m$. Thus, $N = (T^n \times T^m)/H$ is a closed flat manifold. The product metrics $g_{\lambda} = g_{T^n} \oplus \lambda g_{T^m}$, $\lambda > 0$, are invariant

under the H -action and hence descend to flat metrics on N . The closed flat manifolds $\{(N, g_\lambda)\}_{\lambda>0}$ clearly Gromov-Hausdorff converge to \mathcal{O} as $\lambda \searrow 0$. \square

4. TEICHMÜLLER SPACE AND MODULI SPACE OF FLAT METRICS

In this section, we study the Teichmüller space and moduli space of flat metrics on a closed flat orbifold (or manifold), and prove Theorem B in the Introduction.

4.1. Teichmüller space. It follows from the Bieberbach Theorems that any flat metrics on a given closed flat orbifold (or manifold) $\mathcal{O} = \mathbb{R}^n/\pi$ are of the form $g_{\pi'}$ where $\pi' = (A, v)\pi(A, v)^{-1}$ for some $(A, v) \in \text{Aff}(\mathbb{R}^n)$. In this situation,

$$(4.1) \quad H_{\pi'} = A H_\pi A^{-1} \quad \text{and} \quad L_{\pi'} = A(L_\pi).$$

Distinguishing isometry classes of such metrics is straightforward (see also [4]):

Lemma 4.1. *The metrics g_π and $g_{\pi'}$ are isometric, where $\pi' = (A, v)\pi(A, v)^{-1}$, if and only if $A = BC$, where $B \in \text{O}(n)$ and $C \in \mathcal{N}_\pi := \mathfrak{r}(N_{\text{Aff}(\mathbb{R}^n)}(\pi))$.*

Proof. By lifting isometries to \mathbb{R}^n , it is clear that g_π and $g_{\pi'}$ are isometric if and only if there is $(B, w) \in \text{Iso}(\mathbb{R}^n)$ such that $(B, w)\pi(B, w)^{-1} = (A, v)\pi(A, v)^{-1}$, that is, $(C, z) := (B, w)^{-1}(A, v) \in N_{\text{Aff}(\mathbb{R}^n)}(\pi)$. If g_π and $g_{\pi'}$ are isometric, then clearly $A = BC$, with $B \in \text{O}(n)$ and $C \in \mathcal{N}_\pi$. Conversely, if $A = BC$, with $B \in \text{O}(n)$ and $C \in \mathcal{N}_\pi$, there is $z \in \mathbb{R}^n$ such that $(C, z) \in N_{\text{Aff}(\mathbb{R}^n)}(\pi)$. Set $w = v - Bz$, so that $(A, v) = (B, w)(C, z)$. Clearly, $(B, w)^{-1}(A, v) \in N_{\text{Aff}(\mathbb{R}^n)}(\pi)$, so g_π and $g_{\pi'}$ are isometric. \square

While Lemma 4.1 provides the appropriate equivalence relation to distinguish isometry classes, it remains to characterize the space where these relations take place. For a given crystallographic group $\pi \subset \text{Iso}(\mathbb{R}^n)$, we let

$$(4.2) \quad \mathcal{C}_\pi := \{A \in \text{GL}(n) : A H_\pi A^{-1} \subset \text{O}(n)\}.$$

It is easy to see that $A H_\pi A^{-1} \subset \text{O}(n)$ is equivalent to $A^t A \in Z_{\text{GL}(n)}(H_\pi)$, where A^t is the transpose of A . The set \mathcal{C}_π is a closed cone in $\text{GL}(n)$ that contains $N_{\text{GL}(n)}(H_\pi)$. There are natural actions on \mathcal{C}_π by matrix multiplication, on the left by $\text{O}(n)$ and on the right by $N_{\text{GL}(n)}(H_\pi)$. In this context, it is natural to introduce the following:

Definition 4.2. *The Teichmüller space $\mathcal{T}_{\text{flat}}(\mathcal{O})$ of the flat orbifold $\mathcal{O} = \mathbb{R}^n/\pi$ is the orbit space $\text{O}(n)\backslash\mathcal{C}_\pi$ of the left $\text{O}(n)$ -action on \mathcal{C}_π .*

The Teichmüller space $\mathcal{T}_{\text{flat}}(\mathcal{O})$ is a real-analytic manifold diffeomorphic to \mathbb{R}^d , and is described further in Subsection 4.4. It can also be obtained as the deformation space of certain (X, G) -structures, see Section 4.3.

4.2. Moduli space. The *moduli space* $\mathcal{M}_{\text{flat}}(\mathcal{O})$ of the flat orbifold $\mathcal{O} = \mathbb{R}^n/\pi$ is defined as the set of isometry classes of flat metrics on \mathcal{O} . Considering the restriction to \mathcal{N}_π of the right $N_{\text{GL}(n)}(H_\pi)$ -action on \mathcal{C}_π , the following identification follows directly from Lemma 4.1, cf. Wolf [34, Thm. 1].

Proposition 4.3. $\mathcal{M}_{\text{flat}}(\mathcal{O}) = \mathcal{T}_{\text{flat}}(\mathcal{O})/\mathcal{N}_\pi$.

Note that the right \mathcal{N}_π -action on \mathcal{C}_π need not be free, so $\mathcal{M}_{\text{flat}}(\mathcal{O})$ may have (isolated) singularities; this may also be the case if \mathcal{O} is a smooth manifold. As indicated by Proposition 4.3, the group \mathcal{N}_π is related to the *mapping class group* in this Teichmüller theory (see Remark 4.7), and moreover satisfies the following:

Proposition 4.4. \mathcal{N}_π is isomorphic to a discrete subgroup of the group $\text{Aff}(\mathcal{O}) \cong N_{\text{Aff}(\mathbb{R}^n)}(\pi)/Z_{\text{Aff}(\mathbb{R}^n)}(\pi)$ of affine diffeomorphisms of $\mathcal{O} = \mathbb{R}^n/\pi$.

Proof. It is easy to see that \mathcal{N}_π is a countable (Lie) group, and thus discrete. In fact, if π is a lattice, then \mathcal{N}_π is a conjugate of $\text{GL}(n, \mathbb{Z})$ inside $\text{GL}(n)$ and hence countable; while for a general crystallographic group π , one has $\mathcal{N}_\pi \subset \mathcal{N}_{L_\pi}$.

A diffeomorphism $\phi: \mathcal{O} \rightarrow \mathcal{O}$ that preserves the affine structure of the flat orbifold $\mathcal{O} = \mathbb{R}^n/\pi$ endowed with the metric g_π lifts to an affine diffeomorphism $\tilde{\phi}: \mathbb{R}^n \rightarrow \mathbb{R}^n$. Conversely, an affine diffeomorphism $\tilde{\phi}$ of \mathbb{R}^n descends to an affine diffeomorphism ϕ of (\mathcal{O}, g_π) if and only if $\tilde{\phi}$ normalizes π . We thus have a surjective homomorphism from the normalizer of π in $\text{Aff}(\mathbb{R}^n)$ to the group $\text{Aff}(\mathcal{O})$ of affine diffeomorphisms of (\mathcal{O}, g_π) ,

given by $N_{\text{Aff}(\mathbb{R}^n)}(\pi) \ni \tilde{\phi} \mapsto \phi \in \text{Aff}(\mathcal{O})$, whose kernel is the centralizer $Z_{\text{Aff}(\mathbb{R}^n)}(\pi)$. This establishes the isomorphism:

$$\text{Aff}(\mathcal{O}) \cong N_{\text{Aff}(\mathbb{R}^n)}(\pi) / Z_{\text{Aff}(\mathbb{R}^n)}(\pi).$$

Note that the group of affine diffeomorphisms of the closed flat orbifold $\mathcal{O} = \mathbb{R}^n/\pi$ does not depend on the flat metric, but only on the isomorphism class of the crystallographic group π , by the Bieberbach Theorems.

The group $\mathcal{N}_\pi = \mathfrak{r}(N_{\text{Aff}(\mathbb{R}^n)}(\pi))$ is isomorphic to the quotient of $N_{\text{Aff}(\mathbb{R}^n)}(\pi)$ by the kernel of the projection homomorphism $\mathfrak{r}: N_{\text{Aff}(\mathbb{R}^n)}(\pi) \rightarrow N_{\text{GL}(n)}(H_\pi)$, which is given by $N_{\text{Aff}(\mathbb{R}^n)}(\pi) \cap (\{\text{Id}\} \times \mathbb{R}^n) = \{(\text{Id}, w) : Aw - w \in L_\pi, \text{ for all } A \in H_\pi\}$. Clearly, the latter contains $Z_{\text{Aff}(\mathbb{R}^n)}(\pi) = \{(\text{Id}, w) : Aw = w, \text{ for all } A \in H_\pi\}$, and hence \mathcal{N}_π is isomorphic to a subgroup of $\text{Aff}(\mathcal{O})$, concluding the proof. \square

Remark 4.5. In general, \mathcal{N}_π is a *proper* subgroup of $\text{Aff}_{\text{flat}}(\mathcal{O})$. For instance, if \mathbb{R}^2/π is the Klein bottle, then $L_\pi = \mathbb{Z}^2$, and the orthogonal representation of $H_\pi \cong \mathbb{Z}_2$ on \mathbb{R}^2 is by reflection about the x -axis, so $Z_{\text{Aff}(\mathbb{R}^2)}(\pi) = \{(\text{Id}, w) : w = (w_1, 0) \in \mathbb{Z}^2\}$, while $N_{\text{Aff}(\mathbb{R}^2)}(\pi) \cap (\{\text{Id}\} \times \mathbb{R}^2) = \{(\text{Id}, w) : w = (w_1, w_2) \in \mathbb{Z}^2\}$.

4.3. Deformations of (X, G) -structures. The Teichmüller space $\mathcal{T}_{\text{flat}}(M)$ and the moduli space $\mathcal{M}_{\text{flat}}(M)$ of a flat manifold can also be described using the language of (X, G) -structures [33]. Given a Lie group G and a G -homogeneous space X , an (X, G) -*structure* on a manifold M is a (maximal) atlas of charts on M with values in X , whose transition maps are given by restrictions of elements of G . Setting $X = \mathbb{R}^n$ and $G = \text{Iso}(\mathbb{R}^n)$, an (X, G) -structure on a manifold M is precisely a flat Riemannian metric on M .

A general deformation theory of (X, G) -structures on a given manifold M is discussed in [3, 19, 33]. Using the action of the diffeomorphism group $\text{Diff}(M)$ on the space of (X, G) -structures on M , one defines the corresponding *deformation space* and the *moduli space* respectively as

$$\mathcal{D}(M) = \{(X, G)\text{-structures on } M\} / \text{Diff}_0(M), \quad \mathcal{M}(M) = \{(X, G)\text{-structures on } M\} / \text{Diff}(M),$$

where $\text{Diff}_0(M) \subset \text{Diff}(M)$ is the connected component of the identity. The *mapping class group* of M is defined as $\text{MCG}(M) = \text{Diff}(M) / \text{Diff}_0(M)$, so that $\mathcal{M}(M) = \mathcal{D}(M) / \text{MCG}(M)$.

Proposition 4.6. *For $(X, G) = (\mathbb{R}^n, \text{Iso}(\mathbb{R}^n))$, the deformation space $\mathcal{D}(M)$ and the moduli space $\mathcal{M}(M)$ can be respectively identified with the Teichmüller space $\mathcal{T}_{\text{flat}}(M)$ and the moduli space $\mathcal{M}_{\text{flat}}(M)$.*

Proof. Assume $M = \mathbb{R}^n/\pi$, where $\pi \subset \text{Iso}(\mathbb{R}^n)$ is a Bieberbach group, and consider the set $\text{Inj}(\pi, \text{Iso}(\mathbb{R}^n))$ of injective homomorphisms of π into $\text{Iso}(\mathbb{R}^n)$. There is a left action of $\text{Iso}(\mathbb{R}^n)$ on $\text{Inj}(\pi, \text{Iso}(\mathbb{R}^n))$ by conjugation, i.e., composition with inner automorphisms. The deformation space $\mathcal{D}(M)$ is identified with the quotient $\text{Iso}(\mathbb{R}^n) \backslash \text{Inj}(\pi, \text{Iso}(\mathbb{R}^n))$, see [3, Prop. 1.6]. By the Bieberbach Theorems, $\text{Inj}(\pi, \text{Iso}(\mathbb{R}^n))$ can be identified with $\mathcal{C}_\pi \times \mathbb{R}^n$. Using this identification, the action of $\text{Iso}(\mathbb{R}^n) = \text{O}(n) \ltimes \mathbb{R}^n$ on $\text{Inj}(\pi, \text{Iso}(\mathbb{R}^n))$ is given by left multiplication, hence the quotient $\mathcal{D}(M) = \text{Iso}(\mathbb{R}^n) \backslash \text{Inj}(\pi, \text{Iso}(\mathbb{R}^n))$ is identified with the quotient $\mathcal{T}_{\text{flat}}(M) = \text{O}(n) \backslash \mathcal{C}_\pi$, cf. Definition 4.2.

By a generalization of the Dehn-Nielsen-Baer Theorem to flat manifolds, the action of $\text{Diff}(M)$ on the loop space of M induces an isomorphism from $\text{MCG}(M)$ to the group $\text{Out}(\pi)$ of outer automorphisms of π . Moreover, $\text{Out}(\pi)$ is isomorphic to $\text{Aff}(M) / \text{Aff}_0(M)$, see [11, Thm. 6.1]. Using [11, Lemma 6.1], it follows that the orbits of the action of this group on $\text{Iso}(\mathbb{R}^n) \backslash \text{Inj}(\pi, \text{Iso}(\mathbb{R}^n))$ are the same as the orbits of $N_{\text{Aff}(\mathbb{R}^n)}(\pi)$ acting by composition on the right with conjugations. Under the identification of $\mathcal{D}(M) = \text{Iso}(\mathbb{R}^n) \backslash \text{Inj}(\pi, \text{Iso}(\mathbb{R}^n))$ with $\mathcal{T}_{\text{flat}}(M) = \text{O}(n) \backslash \mathcal{C}_\pi$, the action of $N_{\text{Aff}(\mathbb{R}^n)}(\pi)$ coincides with the action of the group \mathcal{N}_π (see Lemma 4.1) by right multiplication. Thus, $\mathcal{M}(M)$ is identified with $\mathcal{M}_{\text{flat}}(M)$, cf. Proposition 4.3. \square

Remark 4.7. By the results quoted above, given a flat manifold $M = \mathbb{R}^n/\pi$, there are isomorphisms

$$(4.3) \quad \text{Diff}(M) / \text{Diff}_0(M) = \text{MCG}(M) \cong \text{Out}(\pi) \cong \text{Aff}(M) / \text{Aff}_0(M).$$

4.4. Algebraic description of Teichmüller space. Let $\mathcal{O} = \mathbb{R}^n/\pi$ be a closed flat orbifold and $\mathcal{T}_{\text{flat}}(\mathcal{O})$ be its Teichmüller space. We now employ simple algebraic considerations to identify $\mathcal{T}_{\text{flat}}(\mathcal{O})$ with a product of (noncompact) homogeneous spaces, proving Theorem B.

Proposition 4.8. *The cone \mathcal{C}_π defined in (4.2) satisfies $\mathcal{C}_\pi = \text{O}(n) \cdot Z_{\text{GL}(n)}(H_\pi)$.*

Proof. Clearly, $\text{O}(n) \cdot Z_{\text{GL}(n)}(H_\pi) \subset \mathcal{C}_\pi$. Choose $A \in \mathcal{C}_\pi$, and write the polar decomposition $A = OP$, with $P = (A^t A)^{\frac{1}{2}}$ and $O \in \text{O}(n)$. Since $A^t A$ centralizes H_π , also P centralizes H_π . Thus, $A \in \text{O}(n) \cdot Z_{\text{GL}(n)}(H_\pi)$, concluding the proof. \square

The following is an immediate consequence of Proposition 4.8 and Definition 4.2.

Corollary 4.9. *The Teichmüller space $\mathcal{T}_{\text{flat}}(\mathcal{O})$ is identified with the quotient space $Z_{\text{GL}(n)}(H_\pi)/\simeq$, where $A \simeq B$ if there exists $O \in \text{O}(n)$ with $B = O \cdot A$. Thus, it can be described as the space of right cosets $(Z_{\text{GL}(n)}(H_\pi) \cap \text{O}(n)) \backslash Z_{\text{GL}(n)}(H_\pi)$.*

According to (4.1), different flat metrics on the same closed orbifold have conjugate holonomy groups. A more precise statement follows from Proposition 4.8:

Corollary 4.10. *Any flat metric g on $\mathcal{O} = \mathbb{R}^n/\pi$ is isometric to a (flat) metric on \mathcal{O} that has the same holonomy as g_π .*

Proof. There is a crystallographic group $\pi' \subset \text{Iso}(\mathbb{R}^n)$ such that $g = g_{\pi'}$. By Proposition 4.8, there exist $O \in \text{O}(n)$ and $A \in Z_{\text{GL}(n)}(H_\pi)$ such that $\pi' = OA \cdot \pi \cdot A^{-1}O^t$. Thus, $g_{\pi'}$ is isometric to $g_{\pi''}$, where $\pi'' = A \cdot \pi \cdot A^{-1}$, and $H_{\pi''} = H_\pi$ since A normalizes H_π . \square

In order to achieve a more precise description of $Z_{\text{GL}(n)}(H_\pi)$, leading to the proof of Theorem B via Corollary 4.9, we use the decomposition of \mathbb{R}^n into H_π -isotypic components. By a result of Hiss and Szczepański [23], see Theorem 2.4, there are always nontrivial invariant subspaces of the orthogonal H_π -representation on \mathbb{R}^n . Recall that a nonzero invariant subspace V is *irreducible* if it contains no proper invariant subspaces; or, equivalently, if every nonzero element of the vector space $\text{End}_{H_\pi}(V)$ of linear equivariant endomorphisms of V is an isomorphism. In this situation, $\text{End}_{H_\pi}(V)$ is an associative real division algebra, hence isomorphic to one of \mathbb{R} , \mathbb{C} , or \mathbb{H} . The irreducible V is called of *real*, *complex*, or *quaternionic* type, according to the isomorphism type of $\text{End}_{H_\pi}(V)$.

Consider the decomposition of the orthogonal H_π -representation into irreducibles,

$$(4.4) \quad \mathbb{R}^n = \underbrace{V_{1,1} \oplus \dots \oplus V_{1,m_1}}_{W_1} \oplus \dots \oplus \underbrace{V_{l,1} \oplus \dots \oplus V_{l,m_l}}_{W_l},$$

where each $V_{i,j}$ is irreducible and $V_{i,j}$ is isomorphic to $V_{i',j'}$ if and only if $i = i'$, so that $W_i = \bigoplus_{j=1}^{m_i} V_{i,j}$, $i = 1, \dots, l$ are the so-called *isotypic components*. Let \mathbb{K}_i be the real division algebra \mathbb{R} , \mathbb{C} , or \mathbb{H} , according to W_i consisting of irreducibles $V_{i,j}$ of real, complex, or quaternionic type.

As $Z_{\text{GL}(n)}(H_\pi) = \text{End}_{H_\pi}(\mathbb{R}^n) \cap \text{GL}(n)$, and $\text{End}_{H_\pi}(\mathbb{R}^n) \cong \prod_{i=1}^l \text{End}_{H_\pi}(W_i)$ by Schur's Lemma, it follows that there is an isomorphism:

$$(4.5) \quad Z_{\text{GL}(n)}(H_\pi) \cong \prod_{i=1}^l \text{GL}(m_i, \mathbb{K}_i).$$

For each isotypic component W_i , it is clear that $\text{End}_{H_\pi}(W_i) \cap \text{O}(W_i) \cong \text{O}(m_i, \mathbb{K}_i)$, where

$$\text{O}(m, \mathbb{K}) := \begin{cases} \text{O}(m), & \text{if } \mathbb{K} = \mathbb{R}; \\ \text{U}(m), & \text{if } \mathbb{K} = \mathbb{C}; \\ \text{Sp}(m), & \text{if } \mathbb{K} = \mathbb{H}. \end{cases}$$

Thus, from Corollary 4.9 and these isomorphisms,

$$\mathcal{T}_{\text{flat}}(\mathcal{O}) \cong \frac{Z_{\text{GL}(n)}(H_\pi)}{Z_{\text{GL}(n)}(H_\pi) \cap \text{O}(n)} \cong \frac{\prod_{i=1}^l \text{End}_{H_\pi}(W_i) \cap \text{GL}(W_i)}{\prod_{i=1}^l \text{End}_{H_\pi}(W_i) \cap \text{O}(W_i)} \cong \prod_{i=1}^l \frac{\text{GL}(m_i, \mathbb{K}_i)}{\text{O}(m_i, \mathbb{K}_i)},$$

which concludes the proof of Theorem B in the Introduction.

5. EXAMPLES OF TEICHMÜLLER SPACES

In this section, we apply Theorem B to compute the Teichmüller space of some flat manifolds and orbifolds.

5.1. Flat tori. If $\pi = L_\pi$ is a lattice, then H_π is trivial and $M = \mathbb{R}^n/\pi$ is a flat torus T^n . In this case, Theorem B gives:

$$(5.1) \quad \mathcal{T}_{\text{flat}}(T^n) \cong \frac{\text{GL}(n)}{\text{O}(n)} \cong \mathbb{R}^{n(n+1)/2}.$$

Furthermore, it is easy to see that $N_{\text{Aff}(\mathbb{R}^n)}(\pi) = \mathbb{R}^n \times \text{GL}(n, \mathbb{Z})$, so $\mathcal{N}_\pi \cong \text{GL}(n, \mathbb{Z})$ is the discrete subgroup of integer matrices with determinant ± 1 . Thus, $\mathcal{M}_{\text{flat}}(T^n) = \text{O}(n) \backslash \text{GL}(n) / \text{GL}(n, \mathbb{Z})$, cf. Wolf [34, Cor].

Remark 5.1. Flat metrics on the 2-torus T^2 are often parametrized using the upper half plane, identifying each flat metric g_π with $w/z \in \mathbb{C}$, where $z, w \in \mathbb{C}$ are chosen so that $\pi = \text{span}_{\mathbb{Z}}\{z, w\}$, $z \in \mathbb{R}$, $z > 0$, and $\text{Im } w > 0$. This parametrization clearly identifies homothetic metrics, while they are distinct in $\mathcal{T}_{\text{flat}}(T^2)$ and $\mathcal{M}_{\text{flat}}(T^2)$.

The moduli space $\mathcal{M}_{\text{flat}}(T^2) = \mathcal{T}_{\text{flat}}(T^2) / \text{GL}(2, \mathbb{Z})$ has two singular strata of dimension 1, corresponding to hexagonal and square lattices. Furthermore, it has one end whose boundary at infinity is a ray $[0, +\infty)$, corresponding to the lengths of circles to which T^2 can collapse. For details, see [15, §12.1].

5.2. Cyclic holonomy. Assume that $H_\pi \subset \text{O}(n)$ is a cyclic group, and choose a generator $A \in H_\pi$. Up to rewriting A in its real canonical form, we may assume that it is block diagonal, with 1×1 and 2×2 blocks, where m_1 diagonal entries are 1, m_2 diagonal entries are -1 , and each of the 2×2 blocks is a rotation matrix

$$(5.2) \quad \begin{pmatrix} \cos \theta_i & -\sin \theta_i \\ \sin \theta_i & \cos \theta_i \end{pmatrix}, \quad \theta_i \in (0, \pi), \quad i = 3, \dots, l,$$

appearing m_i times. Therefore, the decomposition (4.4) has 2 isotypic components of real type with dimensions m_1 and m_2 , namely, $W_1 = \ker(A - \text{Id}) \neq \{0\}$, and $W_2 = \ker(A + \text{Id})$, and all other isotypic components W_i , $i = 3, \dots, l$, are of complex type and consist of m_i copies of \mathbb{R}^2 .

The centralizer $Z_{\text{GL}(n)}(H_\pi)$ consists of block diagonal matrices whose first two blocks (corresponding to W_1 and W_2) are any invertible $m_1 \times m_1$ and $m_2 \times m_2$ matrices, while the remaining blocks are $m_i \times m_i$ invertible matrices which are also complex linear. In other words, there is an isomorphism

$$Z_{\text{GL}(n)}(H_\pi) \cong \text{GL}(m_1, \mathbb{R}) \times \text{GL}(m_2, \mathbb{R}) \times \prod_{i=3}^l \text{GL}(m_i, \mathbb{C}).$$

Therefore, according to Theorem B, the Teichmüller space of $M = \mathbb{R}^n/\pi$ is:

$$\mathcal{T}_{\text{flat}}(M) \cong \frac{\text{GL}(m_1, \mathbb{R})}{\text{O}(m_1)} \times \frac{\text{GL}(m_2, \mathbb{R})}{\text{O}(m_2)} \times \prod_{i=3}^l \frac{\text{GL}(m_i, \mathbb{C})}{\text{U}(m_i)} \cong \mathbb{R}^d,$$

where $d = \frac{1}{2}m_1(m_1 + 1) + \frac{1}{2}m_2(m_2 + 1) + \sum_{i=3}^l m_i^2$.

The case in which $H_\pi \cong \mathbb{Z}_p$, with p prime, is particularly interesting [11, § IV.7]. If $p = 2$, then all H_π -isotypic components are of real type and hence $\mathcal{T}_{\text{flat}}(M) \cong \mathbb{R}^d$, with $d = \frac{1}{2}m_1(m_1 + 1) + \frac{1}{2}m_2(m_2 + 1)$. For instance, if $M = \mathbb{R}^2/\pi$ is the Klein bottle, then $m_1 = m_2 = 1$ and $\mathcal{T}_{\text{flat}}(M) \cong \mathbb{R}^2$. If $p > 2$, then the angles in (5.2) are $\theta_i = \frac{2\pi q_i}{p}$, for some $q_i \in \mathbb{Z}$, $i = 1, \dots, p-1$, with $q_i \not\equiv q_j \pmod{p}$. A special case is that of so-called *generalized Klein bottles* [11, § IV.9], which have dimension p , and holonomy $H_\pi \cong \mathbb{Z}_p \subset \text{O}(p)$ generated by a matrix with characteristic polynomial $\lambda^p - 1$. Thus, in this case $\theta_i = \frac{2\pi i}{p}$ for each $i = 1, \dots, p-1$ and all $m_i = 1$ except for $m_2 = 0$, so $l = \frac{1}{2}(p-1)$ and $\mathcal{T}_{\text{flat}}(M) \cong \mathbb{R}^{\frac{p+1}{2}}$, cf. [11, Thm 9.1, p. 165].

5.3. Flat 2-orbifolds. As listed in Table 1, there are 17 affine equivalence classes of flat 2-orbifolds. Their Teichmüller spaces can be computed using Theorem B as follows:

- (1) The Klein bottle, Möbius band, and cylinder have holonomy group \mathbb{Z}_2 generated by reflection about an axis, and hence have 2 inequivalent 1-dimensional irreducibles. Thus, in these cases, $\mathcal{T}_{\text{flat}}(\mathcal{O}) = \text{GL}(1, \mathbb{R}) / \text{O}(1) \times \text{GL}(1, \mathbb{R}) / \text{O}(1) \cong \mathbb{R}^2$. The case of the 2-torus is discussed in (5.1);
- (2) The flat 2-orbifolds $D^2(; 3, 3, 3)$, $D^2(; 2, 3, 6)$, $D^2(; 2, 4, 4)$, $D^2(4; 2)$, $D^2(3; 3)$, $S^2(3, 3, 3;)$, $S^2(2, 3, 6;)$, and $S^2(2, 4, 4;)$ have irreducible holonomy representation, and hence $\mathcal{T}_{\text{flat}}(\mathcal{O}) = \text{GL}(1, \mathbb{R}) / \text{O}(1) \cong \mathbb{R}$;
- (3) The flat 2-orbifolds $D^2(; 2, 2, 2, 2)$, $D^2(2; 2, 2)$, $D^2(2, 2;)$, and $\text{RP}^2(2, 2;)$ have holonomy group $D_2 \cong \mathbb{Z}_2 \oplus \mathbb{Z}_2$, generated by reflections about the coordinate axes, and hence $\mathcal{T}_{\text{flat}}(\mathcal{O}) = \text{GL}(1, \mathbb{R}) / \text{O}(1) \times \text{GL}(1, \mathbb{R}) / \text{O}(1) \cong \mathbb{R}^2$;

- (4) The flat 2-orbifold $S^2(2, 2, 2, 2;)$ has holonomy group \mathbb{Z}_2 , generated by the rotation of π , and hence 1 isotypic component consisting of 2 copies of the nontrivial 1-dimensional representation. Thus, $\mathcal{T}_{\text{flat}}(S^2(2, 2, 2, 2;)) = \text{GL}(2, \mathbb{R})/\text{O}(2) \cong \mathbb{R}^3$.

5.4. Flat 3-manifolds. As mentioned in Section 2, there are 10 affine equivalence classes of closed flat 3-manifolds, described in Wolf [35, Thm. 3.5.5, 3.5.9]. These manifolds are labeled by the corresponding Bieberbach groups, denoted \mathcal{G}_i , $i = 1, \dots, 6$, in the orientable case, and \mathcal{B}_i , $i = 1, \dots, 4$, in the non-orientable case. Their Teichmüller space can be computed using Theorem B, reobtaining the results of [25, 26]:

- (1) The flat 3-manifold corresponding to \mathcal{G}_1 is the 3-torus, see (5.1);
- (2) The flat 3-manifolds corresponding to \mathcal{G}_3 , \mathcal{G}_4 , and \mathcal{G}_5 have holonomy isomorphic to \mathbb{Z}_k , with $k = 3, 4, 6$, respectively, generated by a block diagonal matrix $A \in \text{O}(3)$ with one eigenvalue 1 and a 2×2 block (5.2) with $\theta = \frac{2\pi}{k}$. Thus, for these manifolds, $\mathcal{T}_{\text{flat}}(M) \cong \text{GL}(1, \mathbb{R})/\text{O}(1) \times \text{GL}(1, \mathbb{C})/\text{U}(1) \cong \mathbb{R}^2$;
- (3) The flat 3-manifolds corresponding to \mathcal{G}_6 , \mathcal{B}_3 , and \mathcal{B}_4 have holonomy isomorphic to $\mathbb{Z}_2 \oplus \mathbb{Z}_2$, generated by $A_1 = \text{diag}(1, -1, 1)$ and $A_2 = \text{diag}(\pm 1, 1, -1)$. In all cases, there are 3 inequivalent 1-dimensional irreducibles. Thus, for such M , $\mathcal{T}_{\text{flat}}(M) \cong \text{GL}(1, \mathbb{R})/\text{O}(1) \times \text{GL}(1, \mathbb{R})/\text{O}(1) \times \text{GL}(1, \mathbb{R})/\text{O}(1) \cong \mathbb{R}^3$;
- (4) The 3-manifolds corresponding to \mathcal{G}_2 , \mathcal{B}_1 , and \mathcal{B}_2 have holonomy isomorphic to \mathbb{Z}_2 , generated by a diagonal matrix $A \in \text{O}(3)$ with eigenvalues ± 1 , one with multiplicity 1 and another with multiplicity 2. Thus, the Teichmüller space of these manifolds is $\mathcal{T}_{\text{flat}}(M) \cong \text{GL}(1, \mathbb{R})/\text{O}(1) \times \text{GL}(2, \mathbb{R})/\text{O}(2) \cong \mathbb{R}^4$.

Comparing the above computations, it follows that closed flat 3-manifolds that have isomorphic holonomy groups also have diffeomorphic Teichmüller spaces. This coincidence, however, is of course not expected to hold in higher dimensions.

The computation of the groups \mathcal{N}_π for the above manifolds, and hence of the moduli space of flat metrics $\mathcal{M}_{\text{flat}}(M)$, can be found in Kang [25, Thm. 4.5].

5.5. Kummer surface. The *Kummer surface* is given by $\mathcal{O} = T^4/\mathbb{Z}_2$, where \mathbb{Z}_2 acts via the antipodal map on each coordinate of T^4 . This is a 4-dimensional flat orbifold with 16 conical singularities, whose desingularization is a Calabi-Yau *K3 surface* (which is not flat, but admits Ricci flat metrics). The holonomy representation on \mathbb{R}^4 has one isotypic component consisting of 4 copies of the nontrivial \mathbb{Z}_2 -representation. Thus, its Teichmüller space is $\mathcal{T}_{\text{flat}}(\mathcal{O}) \cong \text{GL}(4, \mathbb{R})/\text{O}(4) \cong \mathbb{R}^{10}$.

5.6. Joyce orbifolds. There are two interesting examples of 6-dimensional flat orbifolds that, similarly to the Kummer surface above, can be desingularized to Calabi-Yau manifolds as shown by Joyce [24]. The first, $\mathcal{O}_1 = T^6/\mathbb{Z}_4$, also appears in the work of Vafa and Witten, and has holonomy generated by the transformation $\text{diag}(-1, i, i)$ of $\mathbb{C}^3 \cong \mathbb{R}^6$. Thus, its Teichmüller space is $\mathcal{T}_{\text{flat}}(\mathcal{O}_1) \cong \text{GL}(2, \mathbb{R})/\text{O}(2) \times \text{GL}(2, \mathbb{C})/\text{U}(2) \cong \mathbb{R}^7$. The second, $\mathcal{O}_2 = T^6/\mathbb{Z}_2 \oplus \mathbb{Z}_2$, has holonomy generated by the transformations $\text{diag}(1, -1, -1)$ and $\text{diag}(-1, 1, -1)$ of $\mathbb{C}^3 \cong \mathbb{R}^6$, and thus $\mathcal{T}_{\text{flat}}(\mathcal{O}_2) \cong \text{GL}(2, \mathbb{R})/\text{O}(2) \times \text{GL}(2, \mathbb{R})/\text{O}(2) \times \text{GL}(2, \mathbb{R})/\text{O}(2) \cong \mathbb{R}^9$.

6. CLASSIFICATION OF COLLAPSED LIMITS OF FLAT 3-MANIFOLDS

In this section, we analyze the collapsed limits of closed flat 3-manifolds to prove Theorem D.

For completeness, let us briefly discuss the trivial situation of collapse of flat manifolds in dimensions < 3 . In dimension 1, the only closed (flat) manifold is S^1 , and its Teichmüller space is clearly 1-dimensional. In this case, the only possible collapse is to a point.

The 2-dimensional closed flat manifolds are the 2-torus T^2 and the Klein bottle K^2 . From Proposition 3.1, the only possible collapsed limits of T^2 are a point or a circle. The Bieberbach group π corresponding to the Klein bottle $K^2 = \mathbb{R}^2/\pi$ is generated by a lattice L_π , whose basis $\{v_1, v_2\}$ consists of orthogonal vectors, and $(A, \frac{1}{2}v_1)$, where A is the reflection about the line spanned by v_1 . Thus, $H_\pi \cong \mathbb{Z}_2$ has isotypic components $W_1 = \text{span}\{v_1\}$ and $W_2 = \text{span}\{v_2\}$, which are the only two possible directions along which flat metrics on K^2 can collapse. The limit obtained by collapsing W_2 is clearly S^1 . By Proposition 3.2, the limit obtained by collapsing W_1 is the orbit space of the reflection \mathbb{Z}_2 -action on the circle S^1 , which is a closed interval. Therefore, K^2 can collapse to a point, to a circle, or to a closed interval. Geometrically, these can be seen as shrinking the lengths of either pair of opposite sides of the rectangle with boundary identifications that customarily represents K^2 .

To analyze the possible collapses of closed flat 3-manifolds we proceed case by case, in the same order as in Subsection 5.4, following the notation of Wolf [35, Thm. 3.5.5]. The first (trivial) case $\pi = \mathcal{G}_1$ is that of

the 3-torus T^3 , which by Proposition 3.1 can only collapse to a point, to S^1 , or to T^2 . In the remaining cases \mathbb{R}^3/π , we denote by $\{v_1, v_2, v_3\}$ a basis of the lattice L_π and identify each vector $v \in L_\pi$ with $(\text{Id}, v) \in \pi$. Henceforth, we ignore the case of iterated collapses, that is, if a flat manifold M collapses to a flat orbifold \mathcal{O}_1 and this orbifold collapses to another flat orbifold \mathcal{O}_2 , then clearly M can be collapsed (directly) to \mathcal{O}_2 .

6.1. Cases with 2-dimensional Teichmüller space. There are three flat 3-manifolds with 2-dimensional Teichmüller space; namely those with Bieberbach groups \mathcal{G}_3 , \mathcal{G}_4 , and \mathcal{G}_5 , see Subsection 5.4 (2).

Example 6.1 (Case \mathcal{G}_3). The basis of the lattice L_π of the Bieberbach group $\pi = \mathcal{G}_3$ is such that v_1 is orthogonal to both v_2 and v_3 , $\|v_2\| = \|v_3\|$, and v_2 and v_3 span a 2-dimensional hexagonal lattice. This group π is generated by L_π and $(A, \frac{1}{3}v_1)$, where A fixes v_1 and rotates its orthogonal complement by $\frac{2\pi}{3}$. Thus, $H_\pi \cong \mathbb{Z}_3$ and its two isotypic components are $W_1 = \text{span}\{v_1\}$ and $W_2 = \text{span}\{v_2, v_3\}$. Collapsing W_2 , the limit is clearly S^1 . From Proposition 3.2, the limit obtained by collapsing W_1 is the orbit space of a \mathbb{Z}_3 -action on the flat 2-torus given by the quotient of $W_2 \cong \mathbb{R}^2$ by the hexagonal lattice. A generator of \mathbb{Z}_3 acts on W_2 by (clockwise) rotation of angle $\frac{2\pi}{3}$, which leaves invariant the hexagonal lattice, and hence descends to the relevant \mathbb{Z}_3 -action on T^2 . The parallelogram in W_2 with vertices $0, v_2, v_3$, and $v_2 + v_3$ is a fundamental domain for this action. The orbit space T^2/\mathbb{Z}_3 is easily identified as the 2-orbifold $S^2(3, 3, 3;)$ by analyzing the boundary identifications induced on this fundamental domain.

Example 6.2 (Case \mathcal{G}_4). The basis of the lattice L_π of the Bieberbach group $\pi = \mathcal{G}_4$ consists of pairwise orthogonal vectors v_1, v_2 , and v_3 , with $\|v_2\| = \|v_3\|$. This group π is generated by L_π and $(A, \frac{1}{4}v_1)$, where A fixes v_1 and rotates its orthogonal complement by $\frac{\pi}{2}$. Thus, $H_\pi \cong \mathbb{Z}_4$ and the two isotypic components are $W_1 = \text{span}\{v_1\}$ and $W_2 = \text{span}\{v_2, v_3\}$. The limit obtained by collapsing W_2 is clearly S^1 . Collapsing W_1 , the limit is the orbit space of a \mathbb{Z}_4 -action on the flat 2-torus given by the quotient of $W_2 \cong \mathbb{R}^2$ by the square lattice generated by v_2 and v_3 . A generator of \mathbb{Z}_4 acts on W_2 by (clockwise) rotation of angle $\frac{\pi}{2}$, which leaves invariant the square lattice, and hence descends to the relevant \mathbb{Z}_4 -action on T^2 . The square with vertices $0, v_2, v_3$, and $v_2 + v_3$ is a fundamental domain for this action, which is generated by the rotation of angle $\frac{\pi}{4}$ around its center. The orbit space T^2/\mathbb{Z}_4 is identified with $D^2(4; 2)$, which has a singular point on the boundary corresponding to the orbit of the vertices of the square, and an interior singular point corresponding to the center of the square which is fixed by \mathbb{Z}_4 .

Example 6.3 (Case \mathcal{G}_5). The Bieberbach group $\pi = \mathcal{G}_5$ is generated by the same lattice L_π as in Example 6.1 and $(A, \frac{1}{6}v_3)$, where A fixes v_1 and rotates its orthogonal complement by $\frac{\pi}{3}$. Thus, $H_\pi \cong \mathbb{Z}_6$ and the two isotypic components are again $W_1 = \text{span}\{v_1\}$ and $W_2 = \text{span}\{v_2, v_3\}$. The limit obtained collapsing W_2 is clearly S^1 . Collapsing W_1 , the limit is the orbit space of a \mathbb{Z}_6 -action on the flat 2-torus given by the quotient of $W_2 \cong \mathbb{R}^2$ by the hexagonal lattice. A generator of \mathbb{Z}_6 acts on W_2 by (clockwise) rotation of angle $\frac{\pi}{3}$, which leaves invariant the hexagonal lattice, and hence descends to the relevant \mathbb{Z}_6 -action on T^2 . The equilateral triangle in W_2 with vertices $0, v_2$, and v_3 is a fundamental domain for this action, which is generated by the rotation of angle $\frac{\pi}{3}$ around its center. Therefore, the orbit space T^2/\mathbb{Z}_6 is identified with $D^2(3; 3)$, which has a singular point on the boundary corresponding to the orbit of the vertices of the triangle, and an interior singular point corresponding to the center of the triangle which is fixed by \mathbb{Z}_6 . Alternatively, this orbifold can be seen as the quotient of $S^2(3, 3, 3;)$ by an involution given by reflection about the *equator* through one of the singular points. In fact, the subaction of $\mathbb{Z}_3 \triangleleft \mathbb{Z}_6$ on T^2 has orbit space $T^2/\mathbb{Z}_3 = S^2(3, 3, 3;)$ as described in Example 6.1, and hence the orbit space T^2/\mathbb{Z}_6 is given by $S^2(3, 3, 3;)/\mathbb{Z}_2 = D^2(3; 3)$.

Note that the flat 2-orbifolds $S^2(3, 3, 3;)$, $D^2(4; 2)$, and $D^2(3; 3)$ that arise as collapsed limits of the above flat 3-manifolds M with 2-dimensional Teichmüller space have irreducible holonomy (see Subsection 5.3). Thus, the Teichmüller space of such orbifolds is 1-dimensional. This is in accordance with the stratification of the ideal boundary of $\mathcal{T}_{\text{flat}}(M) \cong \mathbb{R}^2$ by the Teichmüller spaces of the collapsed limits of M , which also include a point and S^1 , that have 0- and 1-dimensional Teichmüller spaces respectively.

Remark 6.4. Similar conclusions regarding the ideal boundary of Teichmüller spaces hold in general, for instance in the higher dimensional cases discussed below, provided that two subtleties are taken into account. First, if a flat orbifold \mathcal{O} is a collapsed limit of a flat manifold M , it is not necessarily true that *all* flat metrics on \mathcal{O} arise as collapsed limits of flat metrics on M . Thus, parts of the Teichmüller space of \mathcal{O} might be absent from the stratum of the boundary of $\mathcal{T}_{\text{flat}}(M)$ that corresponds to collapse to \mathcal{O} . Second,

there may be a continuum of inequivalent ways to collapse M to \mathcal{O} , so that the stratum of the boundary of $\mathcal{T}_{\text{flat}}(M)$ that corresponds to collapse to \mathcal{O} may contain a continuum of copies of $\mathcal{T}_{\text{flat}}(\mathcal{O})$.

Recall that the Gromov-Hausdorff distance between the metric spaces given by M equipped with different flat metrics *does not extend continuously* to the ideal boundary of $\mathcal{T}_{\text{flat}}(M)$, as discussed in the Introduction.

6.2. Cases with 3-dimensional Teichmüller space. There are three flat 3-manifolds with 3-dimensional Teichmüller space; namely those with Bieberbach groups \mathcal{G}_6 , \mathcal{B}_3 , and \mathcal{B}_4 , see Subsection 5.4 (3).

Example 6.5 (Case \mathcal{G}_6). The basis of the lattice L_π of the Bieberbach group $\pi = \mathcal{G}_6$ consists of pairwise orthogonal vectors v_1, v_2 and v_3 . This group π is generated by L_π together with

$$(A, \frac{1}{2}v_1), \quad (B, \frac{1}{2}(v_1 + v_2)), \quad (C, \frac{1}{2}(v_1 + v_2 + v_3)),$$

where $A = \text{diag}(1, -1, -1)$, $B = \text{diag}(-1, 1, -1)$, and $C = \text{diag}(-1, -1, 1)$ in the basis $\{v_1, v_2, v_3\}$. Thus, $H_\pi \cong \mathbb{Z}_2 \oplus \mathbb{Z}_2$, and the three isotypic components are $W_i = \text{span}\{v_i\}$, $i = 1, 2, 3$.

Case (a) Collapsing W_1 yields a flat orbifold obtained as the quotient of \mathbb{R}^2 by the action of the group of isometries generated by $T_1(x, y) = (x + a, y)$, $T_2(x, y) = (x, y + b)$, $T_3(x, y) = (-x, -y)$, $T_4(x, y) = (x + \frac{1}{2}a, -y + \frac{1}{2}b)$ and $T_5(x, y) = (-x + \frac{1}{2}a, y + \frac{1}{2}b)$. Here, $a = |v_2| > 0$ and $b = |v_3| > 0$. This orbifold can be identified with $\mathbb{R}P^2(2, 2;)$, for details see Appendix A case $G = G_1$.

Case (b) Collapsing W_2 , we obtain the flat orbifold given by the quotient of \mathbb{R}^2 by the group of isometries generated by $T_1(x, y) = (x + a, y)$, $T_2(x, y) = (x, y + b)$, $T_3(x, y) = (x + \frac{1}{2}a, -y)$, $T_4(x, y) = (-x, -y + \frac{1}{2}b)$ and $T_5(x, y) = (-x + \frac{1}{2}a, y + \frac{1}{2}b)$. Here, $a = |v_1| > 0$ and $b = |v_3| > 0$. Clearly, $T_3^2 = T_1$. As above, this can be identified with $\mathbb{R}P^2(2, 2;)$.

Case (c) Collapsing W_3 , we obtain the flat orbifold given by the quotient of \mathbb{R}^2 by the group of isometries generated by $T_1(x, y) = (x + a, y)$, $T_2(x, y) = (x, y + b)$, $T_3(x, y) = (x + \frac{1}{2}a, -y)$, $T_4(x, y) = (-x, y + \frac{1}{2}b)$ and $T_5 = (-x + \frac{1}{2}a, -y + \frac{1}{2}b)$. Here, $a = |v_1| > 0$ and $b = |v_2| > 0$. Clearly, $T_1 = T_3^2$, $T_2 = T_4^2$ and $T_4 = T_5 \circ T_3$. As above, this can be identified with $\mathbb{R}P^2(2, 2;)$.

Example 6.6 (Case \mathcal{B}_3). The basis of the lattice L_π of the Bieberbach group $\pi = \mathcal{B}_3$ consists of pairwise orthogonal vectors. The group π is generated by L_π together with $(A, \frac{1}{2}v_1)$ and $(E, \frac{1}{2}v_2)$, where $A = \text{diag}(1, -1, -1)$ and $E = \text{diag}(1, 1, -1)$ in the basis $\{v_1, v_2, v_3\}$. Thus, $H_\pi \cong \mathbb{Z}_2 \times \mathbb{Z}_2$, and the three isotypic components are $W_i = \text{span}\{v_i\}$, $i = 1, 2, 3$.

Case (a) Collapsing W_1 yields a flat orbifold obtained as the quotient of \mathbb{R}^2 by the action of the group of isometries generated by $T_1(x, y) = (x + a, y)$, $T_2(x, y) = (x, y + b)$, $T_3(x, y) = (-x, -y)$ and $T_4(x, y) = (x + \frac{1}{2}a, -y)$. Here, $a = |v_2| > 0$ and $b = |v_3| > 0$. This flat orbifold is identified with $D^2(2, 2;)$, for details see Appendix A case $G = G_2$.

Case (b) Collapsing W_2 yields a flat orbifold obtained as the quotient of \mathbb{R}^2 by the action of the group of isometries generated by $T_1(x, y) = (x + a, y)$, $T_2(x, y) = (x, y + b)$, $T_3(x, y) = (x, -y)$ and $T_4(x, y) = (x + \frac{1}{2}a, -y)$. Here, $a = |v_1| > 0$ and $b = |v_3| > 0$. This quotient is identified with $S^1 \times I$, for details see Appendix A case $G = G_3$.

Case (c) Collapsing W_3 yields a flat orbifold obtained as the quotient of \mathbb{R}^2 by the action of the group of isometries generated by $T_1(x, y) = (x + a, y)$, $T_2(x, y) = (x, y + b)$, $T_3(x, y) = (x + \frac{1}{2}a, -y)$ and $T_4(x, y) = (x, y + \frac{1}{2}b)$. Here, $a = |v_1| > 0$ and $b = |v_2| > 0$. Clearly, $T_1 = T_3^2$ and $T_2 = T_4^2$. This quotient is easily identified with a flat Klein bottle.

Example 6.7 (Case \mathcal{B}_4). The basis of the lattice L_π of the Bieberbach group $\pi = \mathcal{B}_4$ also consists of pairwise orthogonal vectors. The group π is generated by L_π together with $(A, \frac{1}{2}v_1)$ and $(E, \frac{1}{2}(v_2 + v_3))$, where $A = \text{diag}(1, -1, -1)$ and $E = \text{diag}(1, 1, -1)$ in the basis $\{v_1, v_2, v_3\}$. Thus, $H_\pi \cong \mathbb{Z}_2 \times \mathbb{Z}_2$, and the three isotypic components are $W_i = \text{span}\{v_i\}$, $i = 1, 2, 3$.

Case (a) Collapsing W_1 yields a flat orbifold obtained as the quotient of \mathbb{R}^2 by the action of the group of isometries generated by $T_1(x, y) = (x + a, y)$, $T_2(x, y) = (x, y + b)$, $T_3(x, y) = (-x, -y)$ and $T_4(x, y) = (x + \frac{1}{2}a, y + \frac{1}{2}b)$. Here, $a = |v_2| > 0$ and $b = |v_3| > 0$. This flat orbifold is identified with $S^2(2, 2, 2, 2;)$, for details see Appendix A case $G = G_4$.

Case (b) Collapsing W_2 yields a flat orbifold obtained as the quotient of \mathbb{R}^2 by the action of the group of isometries generated by $T_1(x, y) = (x + a, y)$, $T_2(x, y) = (x, y + b)$, $T_3(x, y) = (x, -y + \frac{1}{2}b)$ and

$T_4(x, y) = (x + \frac{1}{2}a, -y)$. Here, $a = |v_1| > 0$ and $b = |v_3| > 0$. This flat orbifold is identified with a Möbius band, see Appendix A case $G = G_5$.

Case (c) Collapsing W_3 yields a flat orbifold obtained as the quotient of \mathbb{R}^2 by the action of the group of isometries generated by $T_1(x, y) = (x + a, y)$, $T_2(x, y) = (x, y + b)$, $T_3(x, y) = (x, y + \frac{1}{2}b)$ and $T_4(x, y) = (x + \frac{1}{2}a, -y)$. Here, $a = |v_1| > 0$ and $b = |v_2| > 0$. Clearly, $T_4^2 = T_1$ and $T_3^2 = T_2$. This flat orbifold is easily identified with a Klein bottle.

6.3. Cases with 4-dimensional Teichmüller space. There are three flat 3-manifolds with 4-dimensional Teichmüller space; namely those with Bieberbach groups \mathcal{B}_1 , \mathcal{B}_2 , and \mathcal{G}_2 , see Subsection 5.4 (4).

Example 6.8 (Case \mathcal{B}_1). The manifold in question is the product $K^2 \times S^1$, which by the discussion in the beginning of this section can collapse to K^2 , $S^1 \times I$, I , S^1 , and a point.

Example 6.9 (Case \mathcal{B}_2). The basis of the lattice L_π of the Bieberbach group $\pi = \mathcal{B}_2$ is such that v_1 and v_2 generate any planar lattice, while v_3 is a vector whose orthogonal projection on the plane spanned by v_1 and v_2 is $\frac{1}{2}(v_1 + v_2)$. This group π is generated by L_π and $(E, \frac{1}{2}v_1)$, where E is the identity on the plane spanned by v_1 and v_2 , and $E(v_3) = v_1 + v_2 - v_3$, i.e., $E = \text{diag}(1, 1, -1)$ in the basis $\{v_1, v_2, w\}$, where w is orthogonal to v_1 and v_2 . Thus, $H_\pi \cong \mathbb{Z}_2$ and it has one trivial isotypic component $W_1 = \text{span}\{v_1, v_2\}$ and one nontrivial isotypic component $W_2 = \text{span}\{w\}$ isomorphic to the sign representation of \mathbb{Z}_2 .

Collapsing W_2 , the limit is clearly T^2 . Collapsing W_1 , the limit is an interval I . Collapsing a one-dimensional subspace of W_1 produces as limit either a Möbius band, a Klein bottle, or an interval, depending on the slope of the subspace. More precisely, collapsing the direction of v_1 , the limiting orbifold is the quotient of \mathbb{R}^2 by the group of isometries generated by $T_1(x, y) = (x + a, y)$, $T_2(x, y) = (x + \frac{1}{2}a, y + b)$, and $T_3(x, y) = (x, -y)$. Here, $a = |v_2| > 0$ and $b = |v_3| > 0$. This orbifold can be identified with a Möbius band. On the other hand, collapsing the direction of v_2 , the limiting orbifold is the quotient of \mathbb{R}^2 by the group of isometries generated by $T_1(x, y) = (x + a, y)$, $T_2(x, y) = (x + \frac{1}{2}a, y + b)$, and $T_3(x, y) = (x + \frac{1}{2}a, -y)$. Here, $a = |v_1| > 0$ and $b = |v_3| > 0$. Clearly, $T_3^2 = T_1$, so that T_1 can be omitted from the list of generators. This quotient can be identified with a Klein bottle. Collapsing (generic) directions with irrational slope with respect to v_1 and v_2 has the same effect as collapsing all of W_1 , which results in an interval as the limit.

Example 6.10 (Case \mathcal{G}_2). The basis of the lattice L_π of the Bieberbach group $\pi = \mathcal{G}_2$ is such that v_1 is orthogonal to v_2 and v_3 . This group π is generated by L_π and $(A, \frac{1}{2}v_1)$, where $A(v_1) = v_1$, and $A(v) = -v$ for all v in the span of v_2 and v_3 . Thus, $H_\pi \cong \mathbb{Z}_2$ and it has one trivial isotypic component $W_1 = \text{span}\{v_1\}$ and one nontrivial isotypic component $W_2 = \text{span}\{v_2, v_3\}$, isomorphic to the direct sum of two copies of the sign representation of \mathbb{Z}_2 . Collapsing W_1 , the limit is the quotient of a \mathbb{R}^2 by the group of isometries generated by T_1, T_2, T_3 and $T_4 = -\text{Id}$, with $T_1(x, y) = (x + a, y)$, $T_2(x, y) = (x, y + b)$, and $T_3(x, y) = (x + \frac{a}{2}, y)$. Here, $a = |v_1|$ and $b = |v|$. Clearly, $T_1 = T_3^2$. A fundamental domain for this quotient is given by the rectangular triangle with vertices $(0, 0)$, $(a, 0)$ and $(0, b)$. This limit can be identified with the flat 2-orbifold $D^2(2, 2;)$. Collapsing W_2 , the limit is clearly S^1 . Collapsing a one-dimensional subspace of W_2 produces as limit either a flat Klein bottle or a point, depending on the slope of the subspace.

APPENDIX A. FLAT 2-ORBIFOLDS

We give here some details on how to recognize the flat 2-orbifolds resulting from collapse of flat 3-manifolds discussed in Section 6. In all the examples below, a and b are positive constants. In all figures, singularities (which are always interior points) are marked in red. Red lines represent the boundary. Arrows indicate identifications of the corresponding sides.

A.1. Groups of isometries. In Example 6.5, case (a), we consider the group of isometries generated by:

$$(A.1) \quad \begin{aligned} T_1(x, y) &= (x + a, y), & T_2(x, y) &= (x, y + b), \\ T_3(x, y) &= (-x, -y), & T_4(x, y) &= (x + \frac{1}{2}a, -y + \frac{1}{2}b), \\ T_5(x, y) &= (-x + \frac{1}{2}a, y + \frac{1}{2}b). \end{aligned}$$

Clearly, $T_5 = T_4 \circ T_3$, so this generator is redundant, and it can be removed from the list. Denote by G_1 the group of isometries of \mathbb{R}^2 generated by T_1, T_2, T_3 and T_4 in (A.1). It is not hard to check that cases (b) and (c) of Example 6.5 are essentially equal to case (a) by a change of coordinates.

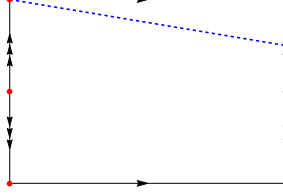


FIGURE 1. This picture represents the rectangle $[0, a/4] \times [-b/2, b/2]$, which is a fundamental domain for the action of G_1 . The arrows give the identifications of the sides that produce the quotient \mathbb{R}^2/G_1 , as described in Proposition A.4.

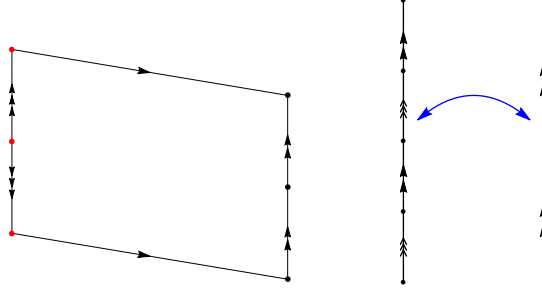


FIGURE 2. From Figure 1, translate the triangle in the upper right corner downward by $(0, -b)$. By relabeling the identifications according to the figure on the right, the quotient \mathbb{R}^2/G_1 can be identified with $\mathbb{R}P^2(2, 2;)$.

In Example 6.6, case (a), we consider the group of isometries generated by:

$$(A.2) \quad \begin{aligned} T_1(x, y) &= (x + a, y), & T_2(x, y) &= (x, y + b), \\ T_3(x, y) &= (-x, -y), & T_4(x, y) &= (x + \frac{a}{2}, -y). \end{aligned}$$

Denote by G_2 the group of isometries of \mathbb{R}^2 generated by T_1, T_2, T_3 and T_4 in (A.2).

In Example 6.6, case (b), we consider the group of isometries generated¹ by:

$$(A.3) \quad \begin{aligned} T_1(x, y) &= (x + a, y), & T_2(x, y) &= (x, y + b), \\ T_3(x, y) &= (-x, y), & T_4(x, y) &= (-x, y + \frac{b}{2}). \end{aligned}$$

Denote by G_3 the group of isometries of \mathbb{R}^2 generated by T_1, T_2, T_3 and T_4 in (A.3).

In Example 6.7, case (a), we consider the group of isometries generated by:

$$(A.4) \quad \begin{aligned} T_1(x, y) &= (x + a, y), & T_2(x, y) &= (x, y + b), \\ T_3(x, y) &= (-x, -y), & T_4(x, y) &= (x + \frac{a}{2}, y + \frac{b}{2}). \end{aligned}$$

Denote by G_4 the group of isometries of \mathbb{R}^2 generated by T_1, T_2, T_3 and T_4 in (A.4).

In Example 6.7, case (b), we consider the group of isometries generated by $T_1(x, y) = (x + a, y)$, $T_2(x, y) = (x, y + b)$, $T_3(x, y) = (x, -y + \frac{1}{2}b)$ and $T_4(x, y) = (x + \frac{1}{2}a, -y)$. Using new coordinates $(x, y - \frac{1}{4}b)$ and interchanging the names of x and y , and a and b , it is easily seen that the quotient is isometric to the quotient of \mathbb{R}^2 by the group of isometries generated by:

$$(A.5) \quad \begin{aligned} T_1(x, y) &= (x + a, y), & T_2(x, y) &= (x, y + b), \\ T_3(x, y) &= (-x, y), & T_4(x, y) &= (-x + \frac{a}{2}, y + \frac{b}{2}). \end{aligned}$$

Denote by G_5 the group of isometries of \mathbb{R}^2 generated by T_1, T_2, T_3 and T_4 in (A.5).

In Example 6.9, case (a), we consider the group of isometries generated by $(x, y) \mapsto (x + a, y)$, $(x, y) \mapsto (x + \frac{1}{2}a, y + b)$, and $(x, y) \mapsto (x, -y)$. Switching the name of the variables (we let the new symbols x, y, a

¹To simplify notation, here we are switching the names of x and y , and of a and b .

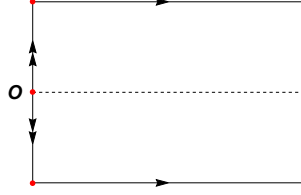


FIGURE 3. The rectangle $[0, a/4] \times [-b/2, b/2]$ is a fundamental domain for the action of G_2 . The identifications of the sides are described in Proposition A.4.

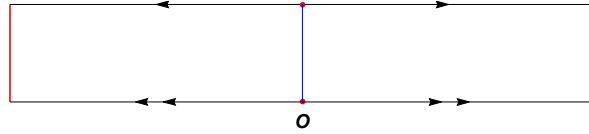


FIGURE 4. The result of rotating clockwise the lower half of the rectangle by the angle π around the origin O , in Figure 3.

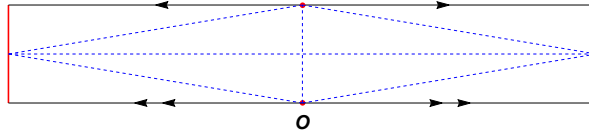


FIGURE 5. Triangulation of the rectangle in Figure 4. The quotient \mathbb{R}^2/G_2 is identified with $D^2(2, 2; \cdot)$.

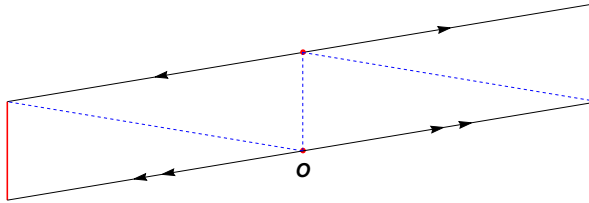


FIGURE 6. This figure also represents the quotient \mathbb{R}^2/G_2 . It is obtained from Figure 5 by: (a) rotating the triangle in the lower right corner clockwise by the angle π around O ; (b) rotating the triangle in the upper left corner clockwise by the angle π around the other red point; (c) re-triangulating into 4 congruent isosceles triangles.

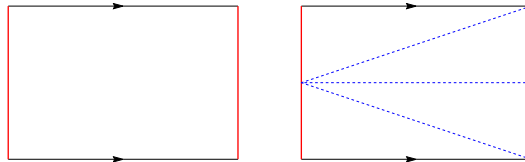


FIGURE 7. The rectangle $[a/2, b/2]$ is a fundamental domain for the action of G_3 on \mathbb{R}^2 . On the right, a triangulation of the quotient space \mathbb{R}^2/G_3 , which is identified with $S^1 \times I$.

and b stand for the old symbols $y, x, 2b$ and a), a set of generators for this group is given by:

$$(A.6) \quad T_2(x, y) = (x, y + b), \quad T_3(x, y) = (-x, y), \quad T_4(x, y) = \left(x + \frac{a}{2}, y + \frac{b}{2}\right).$$

Denote by G_6 the group of isometries of \mathbb{R}^2 generated by T_2, T_3 and T_4 in (A.6).

In Example 6.9, case (b), we consider the group of isometries generated by $(x, y) \mapsto (x + a, y)$, $(x, y) \mapsto (x + \frac{1}{2}a, y + b)$, and $(x, y) \mapsto (x + \frac{1}{2}a, -y)$. Changing the name of the variables (we let the new symbols $x,$

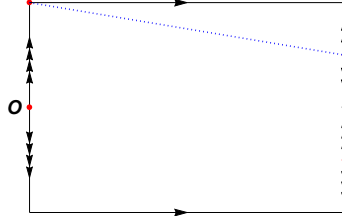


FIGURE 8. The rectangle $[0, a/4] \times [-b/2, b/2]$ is a fundamental domain for the action of G_4 .

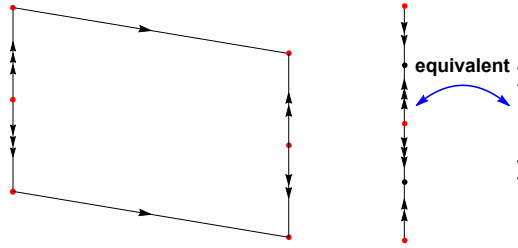


FIGURE 9. Translate the triangle in the upper right corner downward by $(0, -b)$. By relabeling the identifications according to the figure on the right, the quotient \mathbb{R}^2/G_4 can be easily identified with $S^2(2, 2, 2, 2;)$.

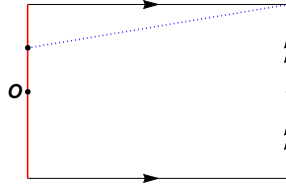


FIGURE 10. The rectangle $[0, a/4] \times [-b/2, b/2]$ is a fundamental domain for the action of G_5 .

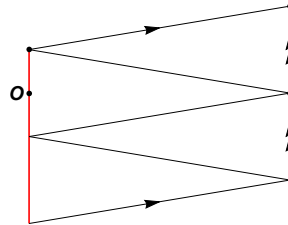


FIGURE 11. From Figure 10, translate the triangle in the upper left corner downward by $(0, -b)$. The quotient \mathbb{R}^2/G_5 can be identified with a flat Möbius band without singularities.

y , a and b stand for the old symbols y , x , $2b$ and a), a set of generators for this group is given by:

$$(A.7) \quad T_2(x, y) = (x, y + b), \quad T_3(x, y) = (-x, y + \frac{b}{2}), \quad T_4(x, y) = (x + \frac{a}{2}, y + \frac{b}{2}).$$

Denote by G_7 the group of isometries of \mathbb{R}^2 generated by T_2 , T_3 and T_4 in (A.7).

We refer to all examples above collectively letting G denote the discrete group of isometries of \mathbb{R}^2 .

Remark A.1. In each example, the image H of G under the linear-part homomorphism is contained in the matrix group $\{\text{diag}(\delta, \varepsilon) : \delta, \varepsilon \in \{1, -1\}\} \cong \mathbb{Z}_2 \oplus \mathbb{Z}_2$. For $G = G_3$, $G = G_5$, $G = G_6$ or $G = G_7$, $H = \{\text{diag}(1, 1), \text{diag}(1, -1)\}$. On the other hand, $H = \{\text{diag}(1, 1), \text{diag}(-1, -1)\}$ for $G = G_4$.

A.2. Fundamental domains and quotient spaces. We now indicate how to identify fundamental domains for each of the above group actions on \mathbb{R}^2 and recognize the quotient space using boundary identifications on such fundamental domains.

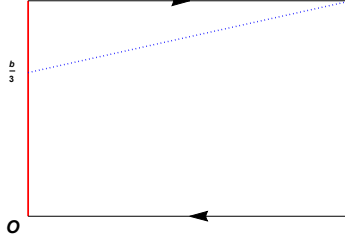


FIGURE 12. The rectangle $[0, a/2] \times [0, b/2]$ is a fundamental domain for the action of G_6 on \mathbb{R}^2 . The identifications of the sides are described in Proposition A.4.

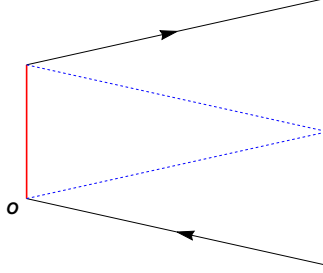


FIGURE 13. In Figure 12, translate the triangle in the upper left corner downward by $(0, -b/2)$, and then reflect the resulting image triangle about the vertical line through the center of the rectangle. This quotient space is a flat Möbius band without singularities.

Lemma A.2. *Every G -orbit intersects the rectangle $Q = [0, a/2] \times [0, b/2]$ for $G = G_3, G_6$, and $Q = [0, a/4] \times [-b/2, b/2]$ for $G = G_1, G_2, G_4, G_5, G_7$.*

Proof. If a group G of affine transformations of a real vector space contains the translations by all elements of a basis e_1, \dots, e_n , then every orbit of G intersects the set $\{\mu_1 e_1 + \dots + \mu_n e_n : \mu_1, \dots, \mu_n \in [-1/2, 1/2]\}$. In fact, any $x \in \mathbb{R}$ differs by an integer from some $y \in [-1/2, 1/2]$.

All G -orbits intersect the rectangle $R = [-a/2, a/2] \times [-b/2, b/2]$. For $G = G_1, G_2, G_3, G_4, G_5$ we see this by applying the reasoning in the preceding paragraph to $n = 2$, $e_1 = (a, 0)$ and $e_2 = (0, b)$. For $G = G_6, G_7$, we note instead that $T_2^k(x, y) = (x, y + kb)$ and $T_4^l(x, y) = (x + la/2, y + lb/2)$ for all $k, l \in \mathbb{Z}$. A suitable choice of l will thus yield the condition $x \in [0, a/2]$, and then some k will ensure that $y \in [-b/2, b/2]$.

Let the phrase “we use T to eliminate S ” now mean that a transformation $T \in G$ sends a set $S \subseteq R$ onto a subset of $R \setminus S$ (and so the stated property still holds when R is replaced by $R \setminus S$).

First, when $G = G_1, G_2, G_4, G_5, G_6$ and G_7 (or, when $G = G_3$), T_3 (or, T_4) may be used to eliminate $[-a/2, 0] \times [-b/2, b/2]$. Similarly, when $G = G_2$ (or, $G = G_3$ and $G = G_6$) the set $(a/4, a/2) \times [-b/2, b/2]$ (or, $(0, a/2) \times [-b/2, 0]$) is eliminated with the aid of $T_4 \circ T_3$ (or, respectively, T_3). Next, when $G = G_4$ or $G = G_7$, we eliminate $(a/4, a/2) \times [0, b/2]$ (or, $(a/4, a/2) \times [-b/2, 0]$) using $T_4 \circ T_3$ (or, respectively, $T_2^{-1} \circ T_4 \circ T_3$). Finally, in both cases $G = G_1$ or $G = G_5$, we use $T_2^{-1} \circ T_4$ (or, T_4) to eliminate $(a/4, a/2) \times [0, b/2]$ or, respectively, $(a/4, a/2) \times [-b/2, 0]$. \square

Lemma A.3. *Every $T \in G$ is given by:*

$$(A.8) \quad T(x, y) = (\delta x + ka/2, \varepsilon y + lb/2) \quad \text{where } \delta, \varepsilon \in \{1, -1\} \text{ and } k, l \in \mathbb{Z},$$

for all $(x, y) \in \mathbb{R}^2$. Furthermore, whenever $T \in G$ is of the form (A.8), we have

$$(A.9) \quad \begin{array}{ll} \text{(i)} & \text{when } G = G_1 : \quad (-1)^k \delta \varepsilon = (-1)^{k+l} = 1, \\ \text{(ii)} & \text{when } G = G_2 : \quad (-1)^k \delta \varepsilon = (-1)^l = 1, \\ \text{(iii)} & \text{when } G = G_3 : \quad \varepsilon = (-1)^k = 1, \\ \text{(iv)} & \text{when } G = G_4 : \quad \delta \varepsilon = (-1)^{k+l} = 1, \\ \text{(v)} & \text{when } G = G_5, G_6 : \quad \varepsilon = (-1)^{k+l} = 1, \\ \text{(vi)} & \text{when } G = G_7 : \quad \varepsilon = (-1)^{k+l} \delta = 1. \end{array}$$

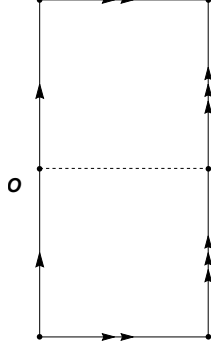


FIGURE 14. The rectangle $[0, a/4] \times [-b/2, b/2]$ is a fundamental domain for the action of G_7 .

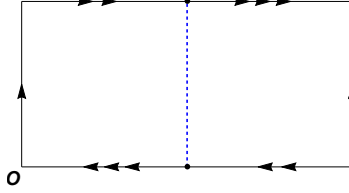


FIGURE 15. In Figure 14, reflect the lower half of the rectangle about its right vertical side, and then translate the resulting image half-rectangle upward by $(0, b/2)$.

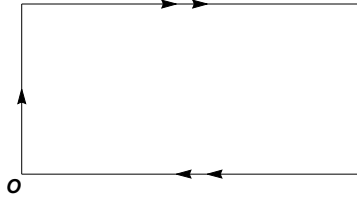


FIGURE 16. Figure 15 depicts the standard flat Klein bottle.

Proof. Affine transformations of type (A.8) form a group, and each of the mappings assigning to T with (A.8) the value δ , or ε , or $(-1)^k$, or $(-1)^l$, is a group homomorphism into $\{1, -1\}$. This is immediate since, expressing (A.8) as $T \sim (\delta, \varepsilon, k, l)$, we have $T \circ \hat{T} \sim (\delta\hat{\delta}, \varepsilon\hat{\varepsilon}, k + \hat{k}, l + \varepsilon\hat{l})$ and $T^{-1} \sim (\delta, \varepsilon, -\delta k, -\varepsilon l)$ whenever $T \sim (\delta, \varepsilon, k, l)$ and $\hat{T} \sim (\hat{\delta}, \hat{\varepsilon}, \hat{k}, \hat{l})$, while $\text{Id} \sim (1, 1, 0, 0)$. Each of the terms equated to 1 in (A.9) thus represents a group homomorphism, and G is, in each case, contained in its kernel, since so is, clearly, the generator set for each G , specified above. \square

We can now describe the quotient space \mathbb{R}^2/G of the action of G .

Proposition A.4. *If $G = G_3$ or $G = G_6$, two points of $Q = [0, a/2] \times [0, b/2]$ lie in the same G -orbit if and only if they are $(x, 0)$ and $(x, b/2)$ or, respectively, $(x, 0)$ and $(-x + a/2, b/2)$, for some $x \in [0, a/2]$.*

In the other five examples, a two-element subset of $Q = [0, a/4] \times [-b/2, b/2]$ is contained in a single G -orbit if and only if it is $\{(x, -b/2), (x, b/2)\}$, where $x \in [0, a/4]$, or is of the form:

- (a) for $G = G_1, G_2, G_4$ only: $\{(0, y), (0, -y)\}$ for some $y \in (0, b/2)$.
- (b) for $G = G_4$ only: $\{(a/4, y), (a/4, -y + b/2)\}$ for some $y \in [0, b/4]$.
- (c) for $G = G_4$ only: $\{(a/4, y), (a/4, -y - b/2)\}$ for some $y \in (-b/4, 0]$.
- (d) for $G = G_1, G_5, G_7$ only: $\{(a/4, y), (a/4, y + b/2)\}$ for some $y \in [-b/2, 0]$;
- (e) for $G = G_7$ only: $\{(0, y), (0, y + b/2)\}$ for some $y \in [-b/2, 0]$.

Proof. The ‘if’ part of our assertion follows if one uses: $T_4 \circ T_3$ and T_2 in the first or, respectively, second paragraph of the lemma; T_3 for (a); $T_4 \circ T_3$ and $T_2^{-1} \circ T_4 \circ T_3$ in (b)–(c); T_4 and $T_2^{-1} \circ T_4$ for (d).

Let Q now contain both (x, y) and $(\hat{x}, \hat{y}) = T(x, y) \neq (x, y)$. Note that $(\hat{x}, \hat{y}) = (\delta x + ka/2, \varepsilon y + lb/2)$ by (A.8). We will repeatedly invoke the obvious fact that

$$(A.10) \quad \begin{array}{l} |p - q| \leq c \text{ whenever } p \text{ and } q \text{ lie in a closed interval of} \\ \text{length } c, \text{ with equality only if } p \text{ and } q \text{ are the endpoints.} \end{array}$$

For $G = G_3, G_6$, $Q = [0, a/2] \times [0, b/2]$. Thus, with $\varepsilon = 1$, cf. (A.9),

$$(A.11) \quad \text{i) } \{2x/a, k + 2\delta x/a\} \subseteq [0, 1], \quad \text{ii) } \{2y/b, l + 2y/b\} \subseteq [0, 1].$$

As an immediate consequence of (A.10), if $a, b \in (0, \infty)$,

$$(A.12) \quad \begin{array}{l} \text{for any } (\delta, k, x) \in \{1, -1\} \times \mathbb{Z} \times [0, a/2] \text{ with (A.11.i) one has } k = x = 0 \\ \text{or } (\delta, k) \in \{(1, 0), (-1, 1)\} \text{ or } (\delta, k, x) \in \{(1, 1, 0), (1, -1, a/2), (-1, 2, a/2)\}, \\ \text{while } l = 0 \text{ or } (y, l) = (0, 1) \text{ whenever } (l, y) \in \mathbb{Z} \times [0, b/2] \text{ satisfy (A.11.ii).} \end{array}$$

Both when $G = G_3$ (where k is even by (A.9.ii)), and when $G = G_6$ (with evenness of k as an additional assumption), (A.12) gives $k = 0$ or $(\delta, k, x) = (-1, 2, a/2)$. Hence $\hat{x} = x$ (as $\delta = 1$ when $k = 0$, unless $x = 0$, cf. (A.12)). The resulting relation $y \neq \hat{y} = y + lb/2$ means that $l \neq 0$, and so, from (A.12), $(y, l) = (0, 1)$. This proves our claim about G_3 , and at the same time contradicts (A.9.iv) for G_6 , so that, when $G = G_6$, k and l must be odd. Now (A.12) yields the required assertion about G_6 .

For $G = G_1, G_2, G_4, G_5, G_7$, our assumption that $Q = [0, a/4] \times [-b/2, b/2]$ contains both (x, y) and $(\hat{x}, \hat{y}) \neq (x, y) = (\delta x + ka/2, \varepsilon y + lb/2)$ has an immediate consequence:

$$(A.13) \quad \hat{x} = x, \quad \text{and } (\delta, k) = (1, 0) \text{ or } (\delta, k, x) = (-1, 0, 0) \text{ or } (\delta, k, x) = (-1, 1, a/4).$$

(Namely, both $4x/a$ and $2k + 4\delta x/a$ lie in $[0, 1]$, and so, due to (A.10), $k = 0$ if $\delta = 1$, while the case $\delta = -1$ allows just two possibilities: $(k, x) = (0, 0)$ or $(k, x) = (1, a/4)$.) The relation $(x, y) \neq (\hat{x}, \hat{y})$ must thus be realized by the y components, that is, y and $\varepsilon y + lb/2$ are two different numbers in $[-b/2, b/2]$ or, equivalently,

$$(A.14) \quad 2y/b \text{ is different from } l + 2\varepsilon y/b \text{ and both lie in } [-1, 1], \text{ while } -2 \leq l \leq 2,$$

the last conclusion being obvious from (A.10).

First, if $|l| = 2$, (A.10) leads to the case mentioned in the second paragraph of the lemma. We may therefore assume from now on that $|l| \leq 1$.

Next, suppose that $l = 0$, and so $\varepsilon = -1$ by (A.14). By (A.9.iv), this excludes the cases $G = G_5$ and $G = G_6$. In the remaining cases $G = G_1, G_2, G_4$, (A.9) gives $(-1)^k \delta = -1$ which, combined with (A.13) and (A.8), shows that $\hat{x} = x = 0$ and $\hat{y} = -y$. Hence (a) follows.

Finally, let $|l| = 1$, so that (A.9) excludes the case $G = G_2$, yields $(-1)^k = -1$ for $G = G_1, G_4, G_5$, and $(-1)^k \delta = -1$ for $G = G_7$. Thus, by (A.13), $(\delta, k, x) = (-1, 1, a/4)$ or, for $G = G_7$ only, $(\delta, k, x) = (-1, 0, 0)$, while (A.9) provides a specific value of ε in each case. Using (A.13) and (A.8) again, we obtain (b), (c), (d) or (e). \square

From Proposition A.4, one easily arrives to the following conclusions:

Corollary A.5. *The quotient \mathbb{R}^2/G is identified with the following flat 2-orbifold (cf. Table 1):*

- (a) $\mathbb{R}P^2(2, 2;)$, if $G = G_1$ (see Figures 1 and 2);
- (b) $D^2(2, 2;)$, if $G = G_2$ (see Figures 3–6);
- (c) $S^1 \times I$ if $G = G_3$ (see Figure 7);
- (d) $S^2(2, 2, 2, 2;)$ if $G = G_4$ (see Figures 8–9);
- (e) Möbius band if $G = G_5$ and when $G = G_6$ (see Figures 10–11 and 12–13);
- (f) Klein bottle if $G = G_7$ (see Figures 14–16).

APPENDIX B. ALTERNATIVE PROOF OF PROPOSITION 3.1

We now provide an alternative and elementary proof of Proposition 3.1, without making use of results on equivariant Gromov-Hausdorff convergence.

In the noncollapsing case $\text{Vol}(T^n, g_i) \geq v_0 > 0$, the dimension of the limit space is n , and by the classical compactness theorem for lattices of Mahler [28], the limit is again a flat torus (T^n, h) . In the collapsing case, we have the following:

Claim B.1. *Suppose that $\text{Vol}(T^n, \mathbf{g}_k) \searrow 0$ as $k \nearrow +\infty$. For each $k \in \mathbb{N}$, choose a lattice $L^{(k)} \subset \mathbb{R}^n$ such that \mathbf{g}_k is isometric to the induced metric $\mathbf{g}_{L^{(k)}}$ on $\mathbb{R}^n/L^{(k)}$. Up to passing to subsequences, there exists a \mathbb{Z} -basis $\{v_1^{(k)}, \dots, v_n^{(k)}\}$ of $L^{(k)}$ such that for some $0 \leq m < n$:*

- (i) *If $m \geq 1$, then $w_j := \lim_{k \rightarrow \infty} v_j^{(k)}$ are linearly independent for $j = 1, \dots, m$;*
- (ii) *$\lim_{k \rightarrow \infty} v_j^{(k)} = 0$ for $j = m + 1, \dots, n$.*

Note that Claim B.1 concludes the proof of Proposition 3.1. Indeed, set

$$\begin{aligned} V^{(k)} &= \text{span}_{\mathbb{R}} \{v_1^{(k)}, \dots, v_m^{(k)}\}, & \Lambda^{(k)} &= \text{span}_{\mathbb{Z}} \{v_1^{(k)}, \dots, v_m^{(k)}\}, \\ V &= \text{span}_{\mathbb{R}} \{w_1, \dots, w_m\}, & \Lambda &= \text{span}_{\mathbb{Z}} \{w_1, \dots, w_m\}. \end{aligned}$$

For all k , the flat torus (T^m, \mathbf{h}_k) given by the quotient $V^{(k)}/\Lambda^{(k)}$ is a closed subspace of (T^n, \mathbf{g}_k) . By property (ii), there are $r_k \searrow 0$, such that the r_k -neighborhoods of (T^m, \mathbf{h}_k) in (T^n, \mathbf{g}_k) are the entire space (T^n, \mathbf{g}_k) . Moreover, the Gromov-Hausdorff limit of (T^m, \mathbf{h}_k) is clearly the flat torus (T^m, \mathbf{h}) given by V/Λ . Thus, (T^m, \mathbf{h}) is the Gromov-Hausdorff limit of (T^n, \mathbf{g}_k) .

In order to prove Claim B.1, given a lattice $\Lambda \subset \mathbb{R}^n$, we want to determine a \mathbb{Z} -basis of Λ in which:

- the angle between any vector of the basis and the hyperplane generated by the others is greater than or equal to some positive constant depending only on the dimension n ;
- the length of each vector of the basis is bounded above by some multiple of the diameter of the flat torus \mathbb{R}^n/Λ .

There are related notions in the literature (“short bases”, “reduced bases”, etc.); we use here a construction based on the notion of λ -normal basis introduced in [10]. The results in this section are *far* from being optimal, but they serve for our purposes.

Let us denote by $\langle \cdot, \cdot \rangle$ the Euclidean inner product in \mathbb{R}^n , and let us recall that the angle between two nonzero vectors $v, w \in \mathbb{R}^n$ is the number

$$\widehat{vw} = \arccos \left(\frac{\langle v, w \rangle}{|v| |w|} \right) \in [0, \pi].$$

Given a nonzero vector $v \in \mathbb{R}^n$ and a nontrivial subspace $W \subset \mathbb{R}^n$, the angle between v and W is:

$$\text{ang}(v, W) = \min \{ \widehat{vw} : w \in W \setminus \{0\} \} \in [0, \frac{\pi}{2}];$$

clearly, if $W' \subset W$, then $\text{ang}(v, W') \geq \text{ang}(v, W)$.

Lemma B.2. *There exists a constant $\theta_n \in]0, \frac{\pi}{2}]$ that depends only on the dimension $n \geq 2$ such that every lattice $\Lambda \subset \mathbb{R}^n$ admits a \mathbb{Z} -basis v_1, \dots, v_n such that, denoting by $W_i \subset \mathbb{R}^n$ the subspace spanned by $v_1, \dots, \hat{v}_i, \dots, v_n$, one has:*

$$(B.1) \quad \text{ang}(v_i, W_i) \geq \theta_n.$$

Proof. Given Λ , it is proven in [10, 4.1.3 Proposition and 4.1.4 Proposition, p. 50–51] the existence of a \mathbb{Z} -basis v_1, \dots, v_n of Λ such that:

$$\det(v_1, \dots, v_n) \geq 2^{-\frac{1}{4}n(n-1)} \prod_{i=1}^n |v_i|.$$

Such a basis satisfies (B.1) for $\theta_n = \arcsin(2^{-\frac{1}{4}n(n-1)})$. □

Let now $R_0(\Lambda) > 0$ be defined by:

$$R_0(\Lambda) = \min \{ r > 0 : \overline{B}(r) \text{ contains a } \mathbb{Z}\text{-basis } v_1, \dots, v_n \text{ of } \Lambda \text{ satisfying (B.1)} \},$$

where $\overline{B}(r) \subset \mathbb{R}^n$ denotes the closed ball of radius r centered at 0.

The set of \mathbb{Z} -bases w_1, \dots, w_n of Λ satisfying (B.1) and contained in $\overline{B}(R_0(\Lambda))$ is finite.² We can rearrange the elements of each such basis in such a way that:

$$(B.2) \quad |w_1| \geq |w_2| \geq \dots \geq |w_n|.$$

²Because the set of vectors $w \in \Lambda$ with $|w| \leq R_0$ is finite.

We give the lexicographical order to the set of all ordered \mathbb{Z} -basis (w_1, \dots, w_n) contained in $\overline{B}(R_0(\Lambda))$ satisfying (B.1) and (B.2), and we denote by (u_1, \dots, u_n) a *minimal* element of this set. We call such a minimal element a *special basis* of Λ . Clearly, if (u_1, \dots, u_n) is a special basis of Λ , then $|u_1| = R_0(\Lambda)$.

Let us also recall that the diameter of the flat torus \mathbb{R}^n/Λ is given by:

$$(B.3) \quad \text{diam}(\mathbb{R}^n/\Lambda) = \max \{d > 0 : \exists v \in \mathbb{R}^n \text{ with } |v| = d \text{ and } B(v; d) \cap \Lambda = \emptyset\},$$

where $B(v; d)$ denotes the open ball centered at v and of radius d .

Proposition B.3. *There exists a positive constant β_n depending only on n such that, given a lattice $\Lambda \subset \mathbb{R}^n$ and a special basis (u_1, \dots, u_n) of Λ , the diameter of the flat torus \mathbb{R}^n/Λ is greater than or equal to $\beta_n |u_1|$.*

Proof. Using (B.3), the result will follow if we show the existence of $\beta_n > 0$ such that

$$(B.4) \quad |\beta_n u_1 - \epsilon u_1 - \gamma|^2 \geq \beta_n^2 |u_1|^2$$

for all $\epsilon \in \mathbb{Z}$ and all $\gamma \in \text{span}_{\mathbb{Z}}\{u_2, \dots, u_n\}$.

In order to prove the desired inequality, we start observing that, by minimality, given $\gamma \in \text{span}_{\mathbb{Z}}\{u_2, \dots, u_n\}$, we have:³

$$(B.5) \quad |u_1 + \gamma|^2 \geq |u_1|^2.$$

Namely, if $|u_1 + \gamma| < |u_1|$, then $\{w_1 := u_1 + \gamma, u_2, \dots, u_n\}$ would be another \mathbb{Z} -basis of Λ satisfying (B.1) and contained in $\overline{B}(R_0(\Lambda))$. The elements of such a basis could then be rearranged to obtain an ordered basis which is strictly less than (u_1, \dots, u_n) in the lexicographical order. But this contradicts the minimality of (u_1, \dots, u_n) and shows that (B.5) must hold.

Note that (B.5) implies that, when $\epsilon = 0$, (B.4) holds for all $\beta_n \in [0, 1]$ and all $\gamma \in \text{span}_{\mathbb{Z}}\{u_2, \dots, u_n\}$. On the other hand, by Lemma B.2:

$$(B.6) \quad \text{ang}(\gamma, u_1) \geq \theta_n, \quad \forall \gamma \in \text{span}_{\mathbb{Z}}\{u_2, \dots, u_n\}.$$

Let us set

$$(B.7) \quad \beta_n = \min \left\{ \frac{1}{2}, \sin(2\theta_n) \right\}$$

and show that, with such a choice⁴, inequality (B.4) holds. Towards this goal, for all $\gamma \in \text{span}_{\mathbb{Z}}\{u_2, \dots, u_n\}$, denote by $\gamma_1 = \frac{\langle \gamma, u_1 \rangle}{\langle u_1, u_1 \rangle} u_1$ the orthogonal projection of γ in the direction of u_1 , and by $\gamma_{\perp} = \gamma - \gamma_1$ the component of γ orthogonal to u_1 .

Note that if $\gamma \in \text{span}_{\mathbb{Z}}\{u_2, \dots, u_n\}$ is such that $|\gamma_{\perp}| \geq \beta_n |u_1|$, then clearly, for all $\epsilon \in \mathbb{Z}$, the vector $\gamma + \epsilon u_1$ cannot belong to the open ball centered at $\beta_n u_1$ and of radius $\beta_n |u_1|$. Thus, in order to check (B.4), it suffices to consider those $\gamma \in \text{span}_{\mathbb{Z}}\{u_2, \dots, u_n\}$ satisfying:

$$(B.8) \quad |\gamma_{\perp}| < \beta_n |u_1|.$$

Moreover, such a γ must satisfy (B.5), which implies that:

$$(B.9) \quad \sqrt{\beta_n^2 |u_1|^2 - |\gamma_{\perp}|^2} - \beta_n |u_1| \leq |\gamma_1| \leq \beta_n |u_1| - \sqrt{\beta_n^2 |u_1|^2 - |\gamma_{\perp}|^2}.$$

For such a γ , it is easy to see that $|\gamma + (\epsilon - \beta_n) u_1| > \beta_n |u_1|$ for all $\epsilon \in \mathbb{Z}$, see Figure 17. Namely, for $\epsilon \geq 1$, since $\beta_n \leq \frac{1}{2}$:

$$2\sqrt{\beta_n^2 |u_1|^2 - |\gamma_{\perp}|^2} - 2\beta_n |u_1| + \epsilon |u_1| \geq 2\sqrt{\beta_n^2 |u_1|^2 - |\gamma_{\perp}|^2} + 1(1 - 2\beta_n) |u_1| > 0,$$

and this shows that $\gamma + \epsilon u_1$ does not belong to the ball centered at $\beta_n u_1$ of radius $\beta_n |u_1|$. For $\epsilon \leq 0$, the vector $\gamma + \epsilon u_1$ does not even belong to the ball centered at u_1 with radius $|u_1|$, completing the proof. \square

Proof of Claim B.1. It suffices to choose $(v_1^{(k)}, \dots, v_n^{(k)})$ a special basis (ordered by decreasing norm of its elements) of $L^{(k)}$, as in Proposition B.3. Since the diameter of $\mathbb{R}^n/L^{(k)}$ is bounded, then $|v_j^{(k)}|$ is a bounded sequence for all $j = 1, \dots, n$. Thus, up to taking subsequences, we can assume that each $v_j^{(k)}$ is convergent to some $w_j \in \mathbb{R}^n$. There exists $j_0 \in \{1, \dots, n\}$ such that $w_j = 0$ for $j > j_0$, and $w_j \neq 0$ for $j \leq j_0$. We claim that w_1, \dots, w_{j_0} is a linearly independent set. Namely, if w_s were a linear combination of $w_1, \dots, \widehat{w}_s, \dots, w_{j_0}$

³From (B.5) it also follows that $|\gamma|^2 \geq 2|\langle u_1, \gamma \rangle|$, for all $\gamma \in \text{span}_{\mathbb{Z}}\{u_2, \dots, u_n\}$, however this inequality is not used here.

⁴ $\beta_2 = \beta_3 = \frac{1}{2}$, $\beta_n = \sin(2\theta_n)$ for all $n \geq 4$.

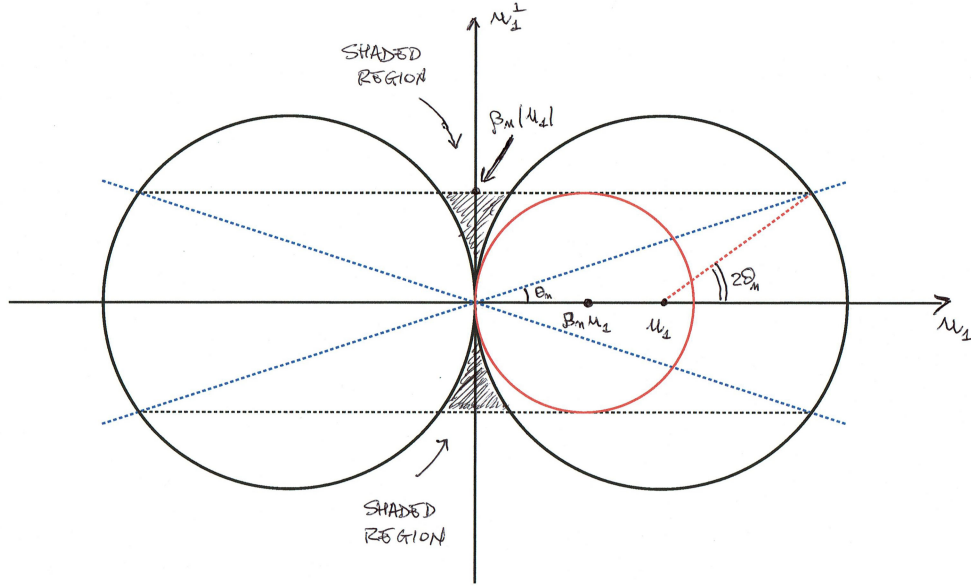


FIGURE 17. An element $\gamma \in \text{span}_{\mathbb{Z}}\{u_2, \dots, u_n\}$ satisfying (B.5), (B.6) and (B.8) must lie in the shaded region of the picture. Given such a γ , any vector of the form $\gamma + \epsilon u_1$, with $\epsilon \in \mathbb{Z}$, does not belong to the ball centered at $\beta_n u_1$ and of radius $\beta_n |u_1|$.

for some $s \in \{1, \dots, j_0\}$, then the angle between $v_s^{(k)}$ and the space generated by $v_1^{(k)}, \dots, \widehat{v_s^{(k)}}, \dots, v_{j_0}^{(k)}$ would be arbitrarily small as $k \rightarrow \infty$. But for a special basis this is not possible, and this contradiction shows that w_1, \dots, w_{j_0} is a linearly independent set. \square

REFERENCES

- [1] M. M. ALEXANDRINO AND R. G. BETTIOL, *Lie Groups and Geometric Aspects of Isometric Actions*, Springer, 2015.
- [2] L. AUSLANDER AND M. KURANISHI, *On the holonomy group of locally Euclidean spaces*, Ann. of Math. (2), 65 (1957), 411–415.
- [3] O. BAUES, *Varieties of discontinuous groups*, in Crystallographic groups and their generalizations (Kortrijk, 1999), vol. 262 of Contemp. Math., Amer. Math. Soc., Providence, RI, 2000, 147–158.
- [4] R. G. BETTIOL AND P. PICCIONE, *Infinitely many solutions to the Yamabe problem on noncompact manifolds*, preprint, (2016). [arXiv:1603.07788](https://arxiv.org/abs/1603.07788).
- [5] L. BIEBERBACH, *Über die Bewegungsgruppen der Euklidischen Räume, I*, Math. Ann., 70 (1911), 297–336.
- [6] L. BIEBERBACH, *Über die Bewegungsgruppen der Euklidischen Räume, II. Die Gruppen mit einem endlichen Fundamentalbereich*, Math. Ann., 72 (1912), 400–412.
- [7] M. R. BRIDSON AND A. HAEFLIGER, *Metric spaces of non-positive curvature*, vol. 319 of Grundlehren der Mathematischen Wissenschaften [Fundamental Principles of Mathematical Sciences], Springer-Verlag, Berlin, 1999.
- [8] H. BROWN, R. BÜLOW, J. NEUBÜSER, H. WONDRACTSCHK, AND H. ZASSENHAUS, *Crystallographic groups of four-dimensional space*, Wiley-Interscience [John Wiley & Sons], New York-Chichester-Brisbane, 1978. Wiley Monographs in Crystallography.
- [9] P. BUSER, *A geometric proof of Bieberbach's theorems on crystallographic groups*, Enseign. Math. (2), 31 (1985), 137–145.
- [10] P. BUSER AND H. KARCHER, *Gromov's almost flat manifolds*, vol. 81 of Astérisque, Société Mathématique de France, Paris, 1981.
- [11] L. S. CHARLAP, *Bieberbach groups and flat manifolds*, Universitext, Springer-Verlag, New York, 1986.
- [12] C. CID AND T. SCHULZ, *Computation of five- and six-dimensional Bieberbach groups*, Experiment. Math., 10 (2001), 109–115.
- [13] J. H. CONWAY, *The orbifold notation for surface groups*, in Groups, combinatorics & geometry (Durham, 1990), vol. 165 of London Math. Soc. Lecture Note Ser., Cambridge Univ. Press, Cambridge, 1992, 438–447.
- [14] M. W. DAVIS, *Lectures on orbifolds and reflection groups*, in Transformation groups and moduli spaces of curves, vol. 16 of Adv. Lect. Math. (ALM), Int. Press, Somerville, MA, 2011, 63–93.
- [15] B. FARB AND D. MARGALIT, *A primer on mapping class groups*, vol. 49 of Princeton Mathematical Series, Princeton University Press, Princeton, NJ, 2012.
- [16] K. FUKAYA, *Theory of convergence for Riemannian orbifolds*, Japan. J. Math. (N.S.), 12 (1986), 121–160.

- [17] K. FUKAYA AND T. YAMAGUCHI, *The fundamental groups of almost non-negatively curved manifolds*, Ann. of Math. (2), 136 (1992), 253–333.
- [18] F. GALAZ-GARCIA AND L. GUIJARRO, *On three-dimensional Alexandrov spaces*, Int. Math. Res. Not. IMRN, (2015), 5560–5576.
- [19] W. M. GOLDMAN, *Geometric structures on manifolds and varieties of representations*, in Geometry of group representations (Boulder, CO, 1987), vol. 74 of Contemp. Math., Amer. Math. Soc., Providence, RI, 1988, 169–198.
- [20] M. GROMOV, *Metric structures for Riemannian and non-Riemannian spaces*, Modern Birkhäuser Classics, Birkhäuser Boston, Inc., Boston, MA, English ed., 2007. Based on the 1981 French original, With appendices by M. Katz, P. Pansu and S. Semmes.
- [21] W. HANTZSCHE AND H. WENDT, *Dreidimensionale euklidische Raumformen*, Math. Ann., 110 (1935), 593–611.
- [22] J. HARVEY AND C. SEARLE, *Orientation and symmetries of Alexandrov spaces with applications in positive curvature*, preprint, (2012). [arXiv:1209.1366](https://arxiv.org/abs/1209.1366).
- [23] G. HISS AND A. SZCZEPAŃSKI, *On torsion free crystallographic groups*, J. Pure Appl. Algebra, 74 (1991), 39–56.
- [24] D. JOYCE, *Deforming Calabi-Yau orbifolds*, Asian J. Math., 3 (1999), 853–867.
- [25] E. S. KANG, *Moduli spaces of 3-dimensional flat manifolds*, J. Korean Math. Soc., 43 (2006), 1065–1080.
- [26] E. S. KANG AND J. Y. KIM, *Deformation spaces of 3-dimensional flat manifolds*, Commun. Korean Math. Soc., 18 (2003), 95–104.
- [27] B. KLEINER AND J. LOTT, *Geometrization of three-dimensional orbifolds via Ricci flow*, preprint, (2011). [arXiv:1101.3733](https://arxiv.org/abs/1101.3733).
- [28] K. MAHLER, *On lattice points in n -dimensional star bodies. I. Existence theorems*, Proc. Roy. Soc. London. Ser. A., 187 (1946), 151–187.
- [29] Y. MATSUMOTO AND J. M. MONTESINOS-AMILIBIA, *A proof of Thurston’s uniformization theorem of geometric orbifolds*, Tokyo J. Math., 14 (1991), 181–196.
- [30] W. PLESKEN AND T. SCHULZ, *Counting crystallographic groups in low dimensions*, Experiment. Math., 9 (2000), 407–411.
- [31] A. SZCZEPAŃSKI, *Problems on Bieberbach groups and flat manifolds*, preprint, (2008). [arXiv:0507355](https://arxiv.org/abs/0507355).
- [32] A. SZCZEPAŃSKI, *Geometry of crystallographic groups*, vol. 4 of Algebra and Discrete Mathematics, World Scientific Publishing Co. Pte. Ltd., Hackensack, NJ, 2012.
- [33] W. P. THURSTON, *Three-dimensional geometry and topology. Vol. 1*, vol. 35 of Princeton Mathematical Series, Princeton University Press, Princeton, NJ, 1997. Edited by Silvio Levy.
- [34] J. A. WOLF, *Local and global equivalence for flat affine manifolds with parallel geometric structures*, Geometriae Dedicata, 2 (1973), 127–132.
- [35] J. A. WOLF, *Spaces of constant curvature*, Publish or Perish, Inc., Houston, TX, fifth ed., 1984.

UNIVERSITY OF PENNSYLVANIA
DEPARTMENT OF MATHEMATICS
209 SOUTH 33RD ST
PHILADELPHIA, PA, 19104-6395, USA
E-mail address: rbettiol@math.upenn.edu

THE OHIO STATE UNIVERSITY
DEPARTMENT OF MATHEMATICS
231 W. 18TH AVENUE
COLUMBUS, OH 43210, USA
E-mail address: andrzej@math.ohio-state.edu

UNIVERSIDADE DE SÃO PAULO
DEPARTAMENTO DE MATEMÁTICA
RUA DO MATÃO 1010
SÃO PAULO, SP 05508-090, BRAZIL
E-mail address: piccione@ime.usp.br