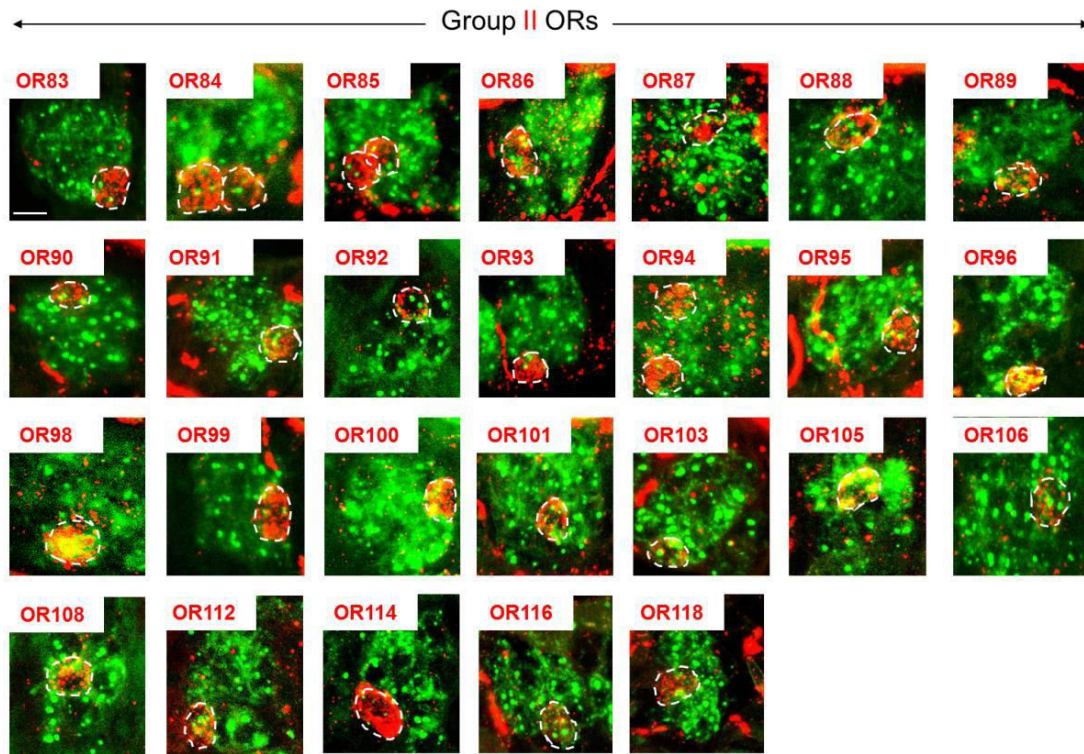


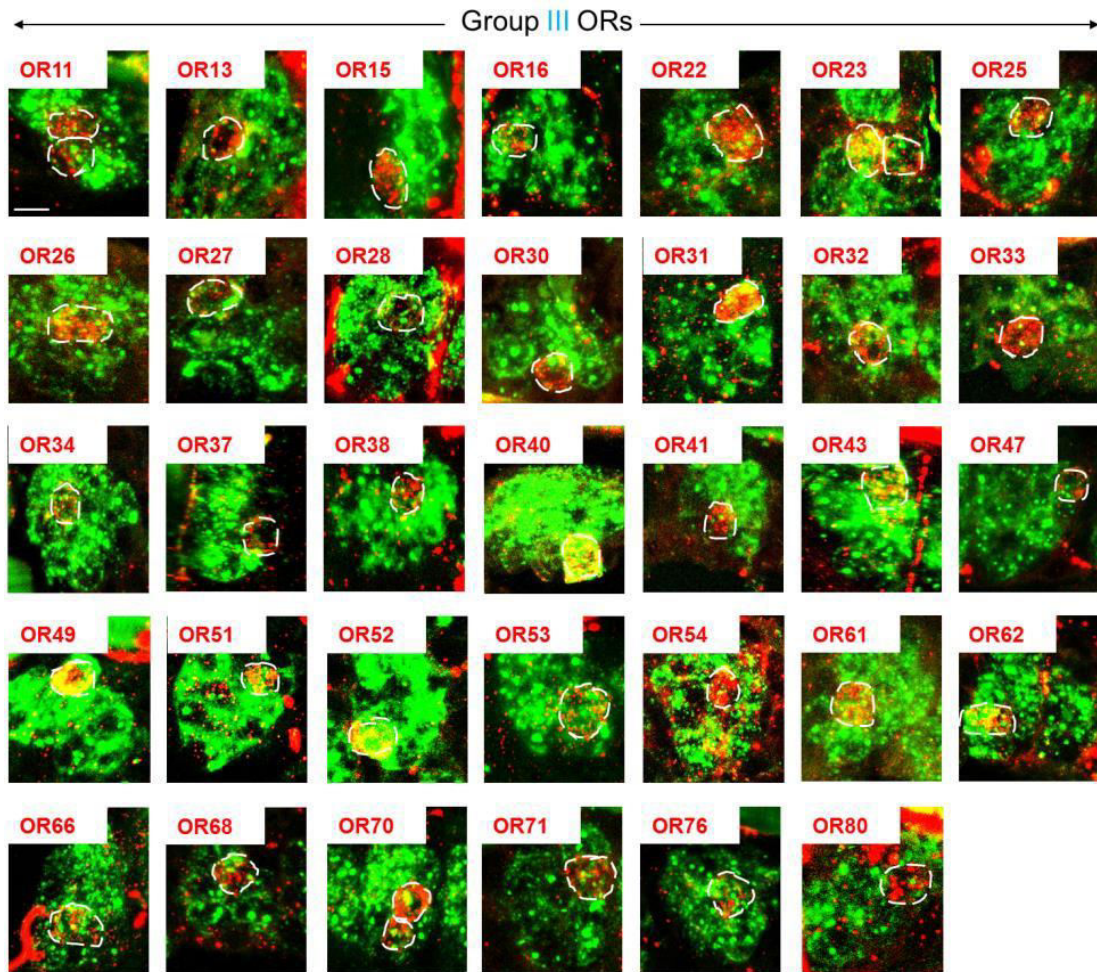
1 Supporting Data



3 **Figure S1**

4

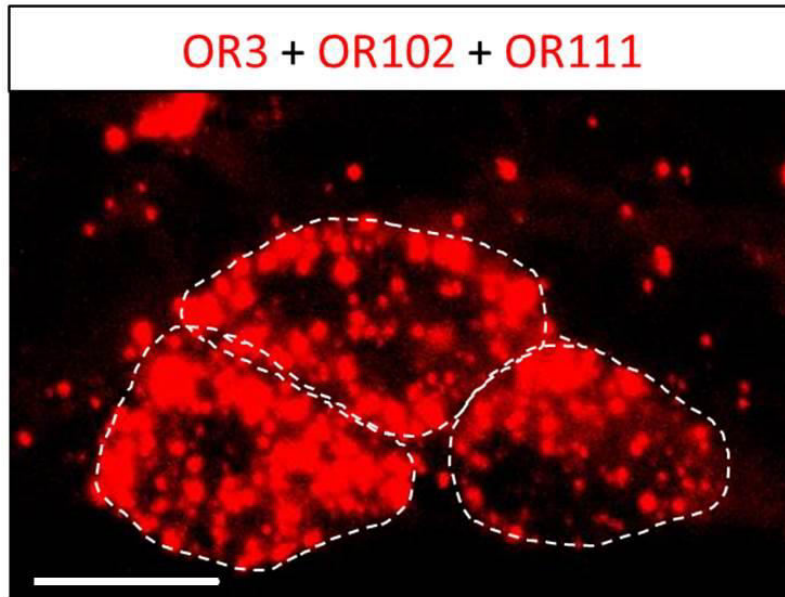
5 Assembly of 26 additional group II ORs expressed in *s. basiconica*. Staining of  
6 distinct OR types (in red) and Orco (in green) were visualized by means of two-color  
7 FISH using DIG- and BIO-labeled riboprobes, respectively. OR-positive cells are  
8 delineated by white dash lines. Scale bar, 10  $\mu$ m.



9

10 **Fig. S2**

11 34 additional group III ORs expressed in *s. basiconica*. Staining for distinct OR types  
 12 (in red) and Orco (in green) was visualized by means of two-color FISH using DIG-  
 13 and BIO-labeled riboprobes, respectively. OR-positive cells are delineated by white  
 14 dash lines. Scale bar, 10  $\mu$ m.



15

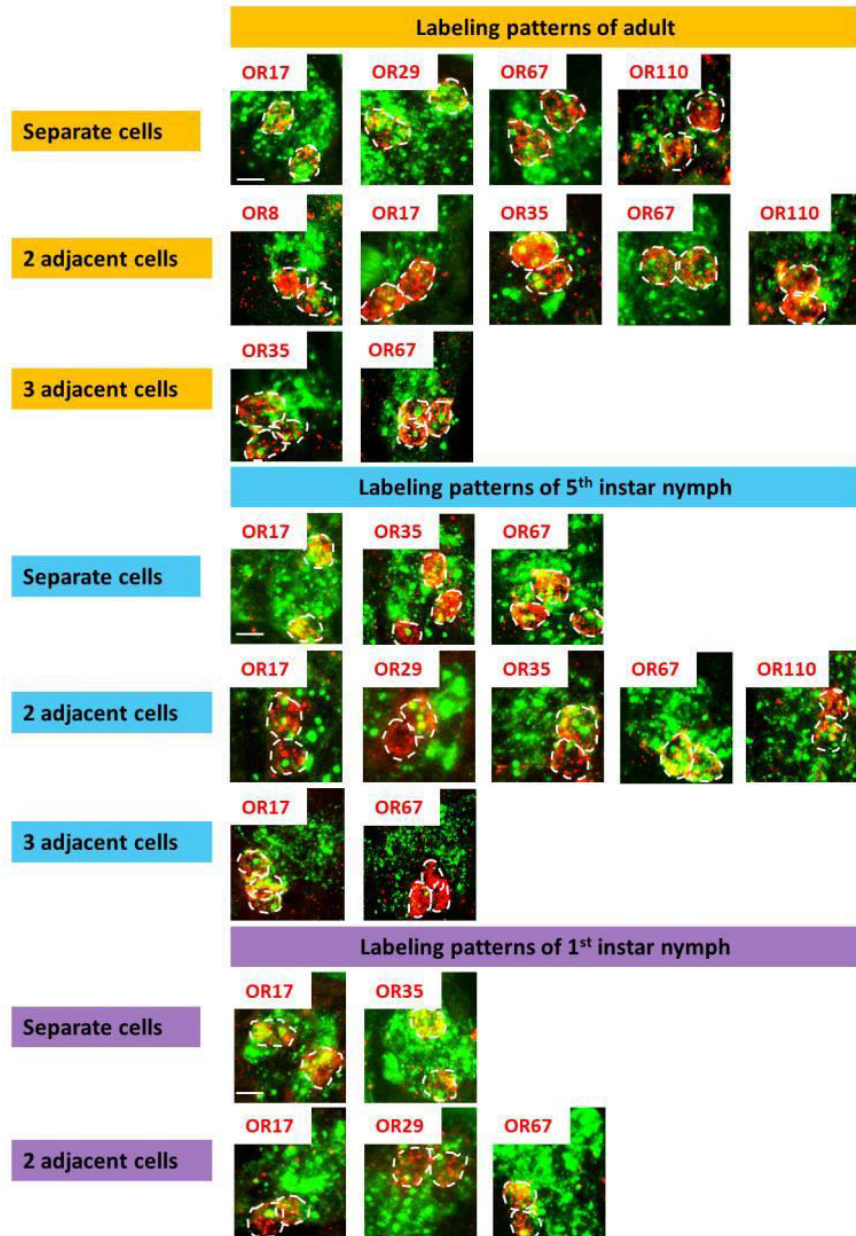
16 **Figure S3**

17 **Co-localization of cells expressing three trichoid sensilla OR types**

18

19 The cells expressing three distinct OR types were visualized by means of single FISH  
20 using a mixture of antisense riboprobes labeled in DIG (red fluorescence). White dash  
21 circle outlines three discernable OR cells. Scale bar, 10  $\mu$ m.





22

23

24 **Fig. S4**

25 Additional examples of OR labeling patterns in *s. basiconica* at three different  
 26 developmental stages. Labeling for distinct OR types (in red) and Orco (in green)  
 27 were visualized by means of two-color FISH using DIG- and BIO-labeled riboprobes,  
 28 respectively. OR-positive cells are delineated by white dash lines. Scale bar, 10  $\mu$ m.