

Towards a global understanding of vegetation–climate dynamics at multiple time scales

Running Title: Multi-scale vegetation–climate dynamics

Nora Linscheid, Lina M. Estupinan-Suarez, Alexander Brenning, Nuno Carvalhais,
Felix Creme, Fabian Gans, Anja Rammig, Markus Reichstein, Carlos A. Sierra,
Miguel D. Mahecha

Supplementary Figures

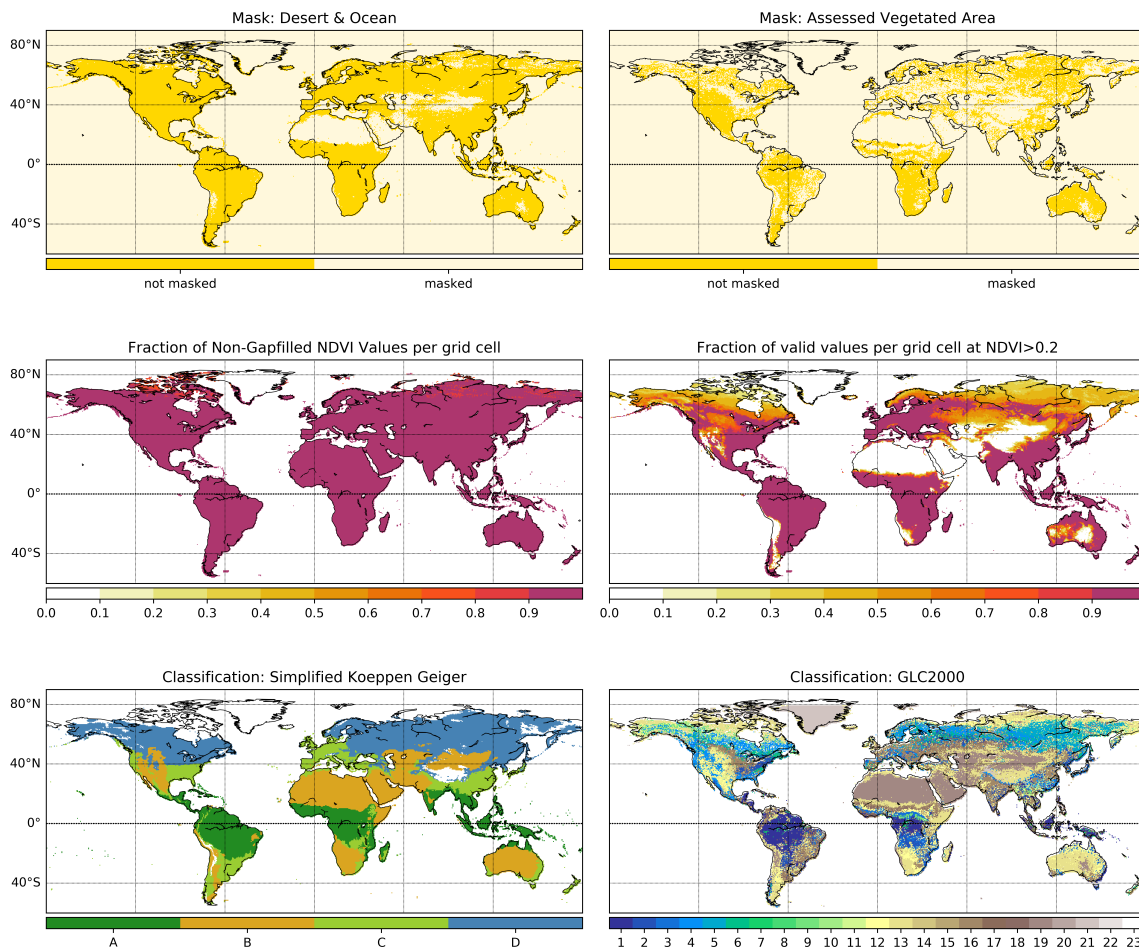


Figure S1: **Masks and Classification schemes used in the analyses.** **a.** Mask for deserts and oceans, **b.** Mask for natural vegetated area based on GLC2000, **c.** Fraction of non-gapfilled NDVI values per grid cell based on GIMMS NDVI, **d.** Fraction of valid values per grid cell after filtering for $NDVI > 0.2$, **e.** Simplified Köppen–Geiger Classification, A: equatorial, B: arid, C: warm temperate, D: snow, **f.** Classification of land cover classes after Global Land Cover 2000 (GLC2000). Numbers from 1–23 represent: 1 – Tree Cover broadleaved evergreen, 2 – Tree Cover broadleaved deciduous closed, 3 – Tree Cover broadleaved deciduous open, 4 – Tree Cover needle leaved evergreen, 5 – Tree Cover needle leaved deciduous, 6 – Tree Cover mixed leaf type, 7 – Tree Cover regularly flooded fresh water, 8 – Tree Cover regularly flooded saline water, 9 – Mosaic: Tree Cover and other natural vegetation, 10 – Tree Cover burnt, 11 – Shrub Cover closed open evergreen, 12 – Shrub Cover closed open deciduous, 13 – Herbaceous Cover closed open, 14 – Sparse herbaceous or sparse shrub cover, 15 – Regularly flooded shrub and or herbaceous cover, 16 – Cultivated and managed areas, 17 – Mosaic: Cropland Tree Cover Other natural vegetation, 18 – Mosaic: Cropland Shrub and or grass cover, 19 – Bare Areas, 20 – Water Bodies, 21 – Snow and Ice, 22 – Artificial surfaces and associated areas, 23 – no data.

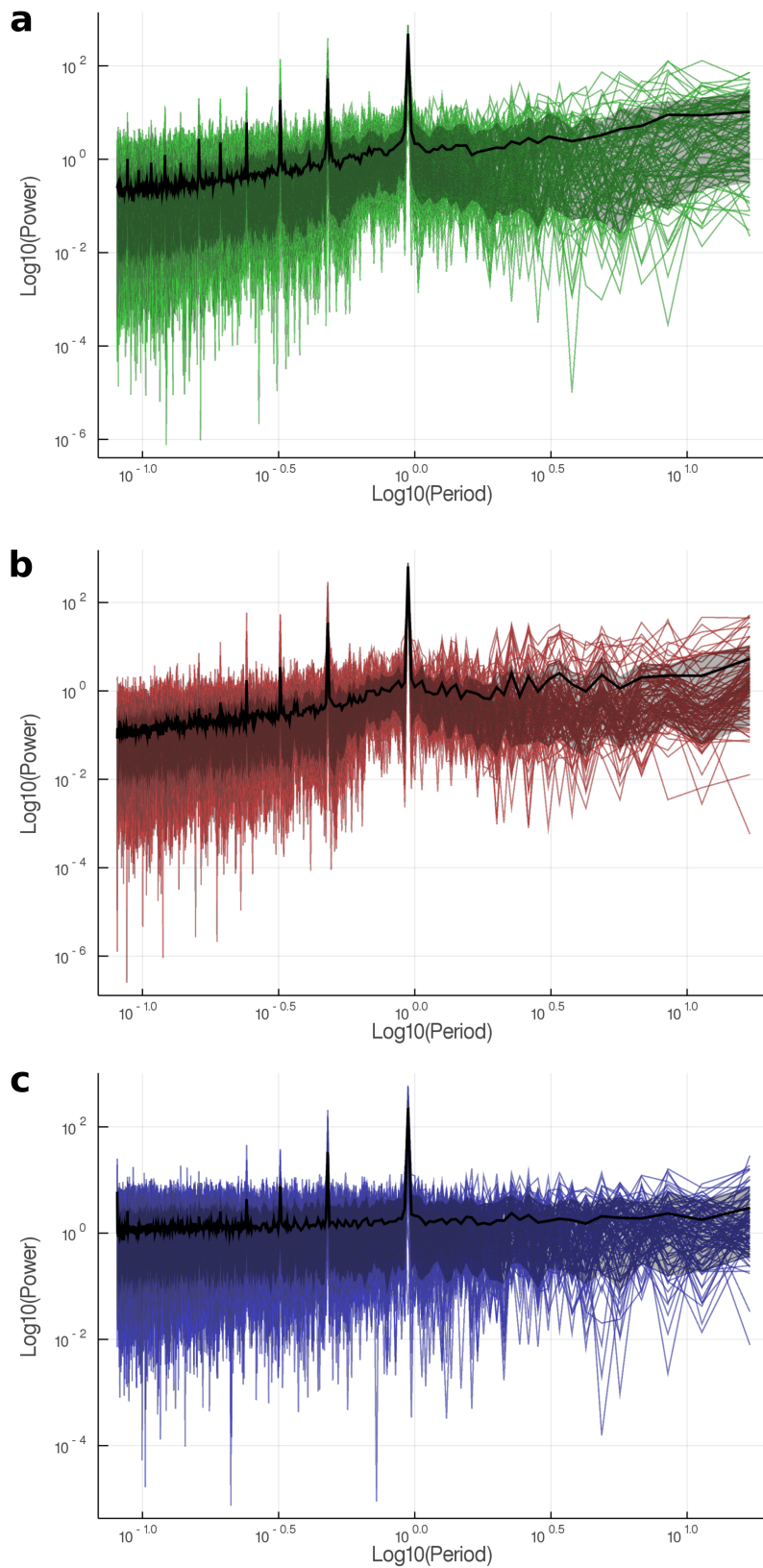


Figure S2: **Representative power spectra of Fourier decomposed NDVI (a), air temperature (b) and precipitation (c) time series.** Mean and 10th–90th percentile of power spectra are plotted as black line (mean) and band (percentiles), overlaid by 10000 sample spectra. Shortest signal periods (fastest frequencies) are plotted on the left side of the x-axis, longest periods on the right side of the x-axis. The annual period is located at 10^0 .

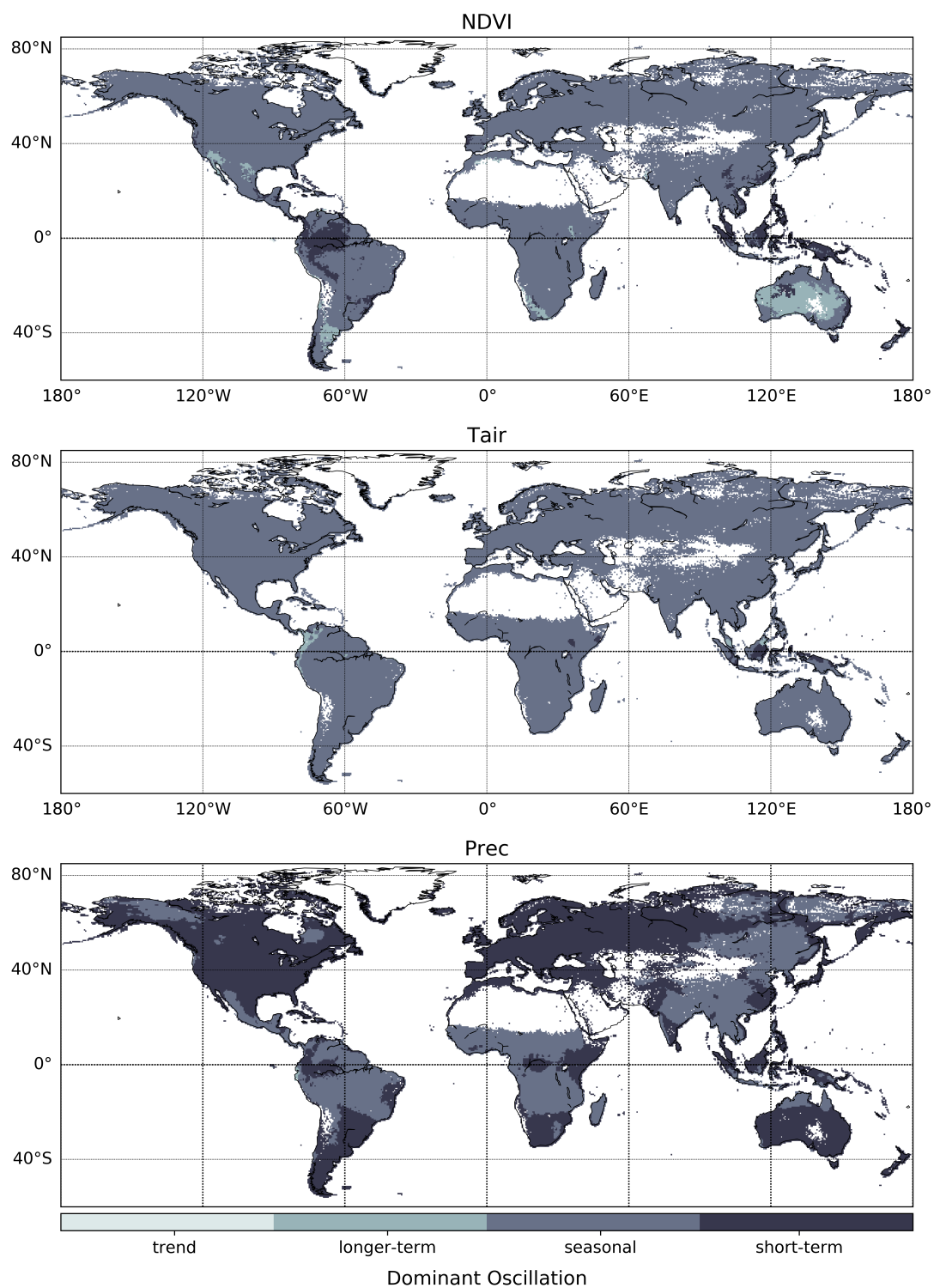


Figure S3: **Dominant Oscillation of NDVI, air temperature (T_{air}) and precipitation (Prec) per grid cell.** Dominant scale of variability was determined from normalized, detrended and decomposed time series as the time scale containing highest relative variance (cf. Fig. 1).

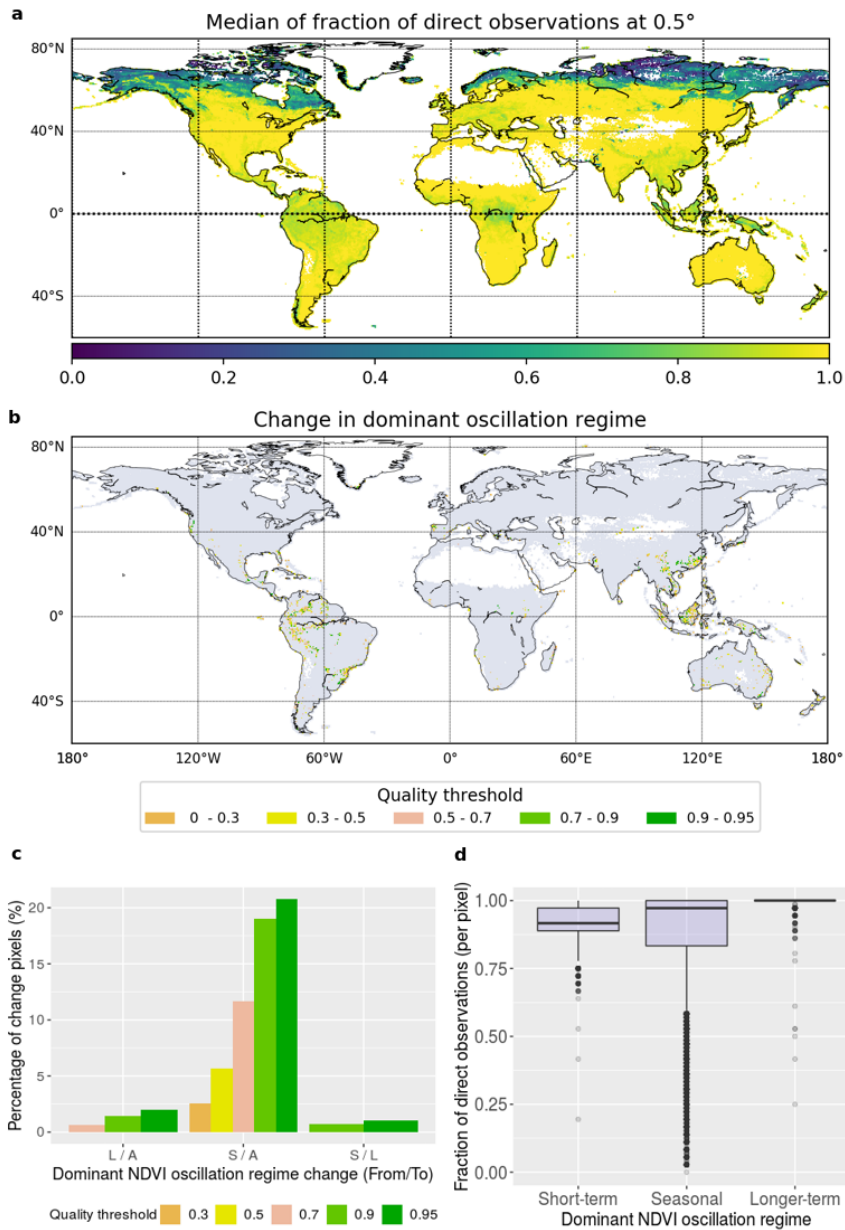


Figure S4: **Assessment of NDVI GIMMS quality flags; direct observations and effect of retrieval values.** **a.** Median of fraction of direct observations at 0.5° per grid cell calculated overall time period (1982–2015). Fraction of direct observations ranges from 0 to 1, and corresponds to the number of pixels with direct observation after data aggregation (from 0.083° to 0.5°). Quality flag 1 is obtained when all aggregated pixels are direct observations, 0 if none are direct observations, **b.** Pixels that change NDVI dominant oscillation class when 0.3, 0.5, 0.7, 0.9, and 0.95 quality threshold is applied (quality is defined as the fraction of pixels originating from direct observations after aggregation), **c.** Percentage of pixels with change per dominant oscillation class. S: Short-term, A: Seasonal, L: Longer-term, T: Trend, in order from / to. Categories with change <0.05% are omitted. **d.** Median fraction originating from direct observation per pixel shown as box plot per oscillation regime. Lowest percentage of direct observation is found in seasonal NDVI regimes.

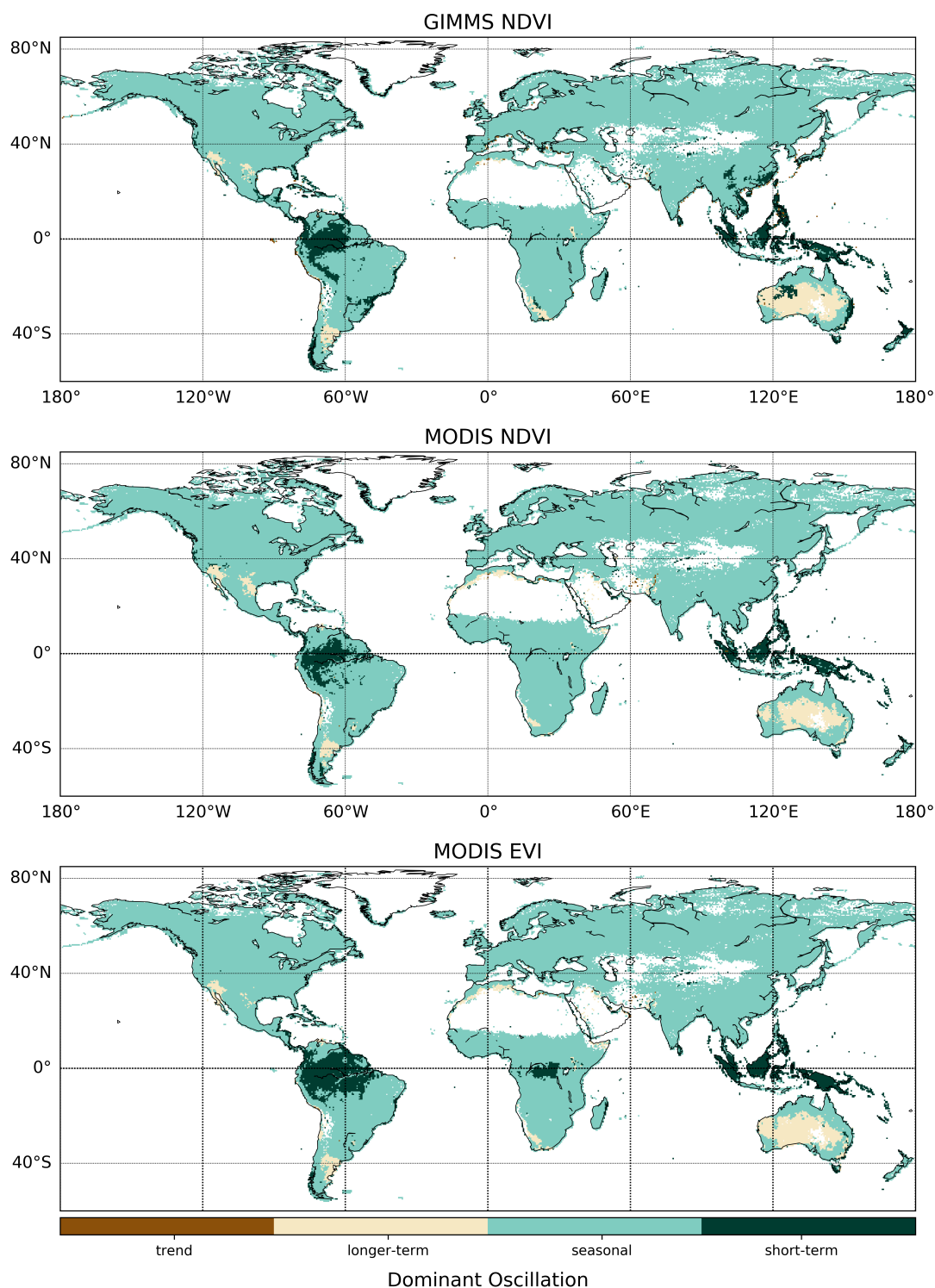


Figure S5: **Comparison of dominant oscillation classification between vegetation indices.** Dominant scale of variability for GIMMS NDVI from 1982 to 2015 (top), MODIS NDVI from 2001 to 2015 (center), and EVI MODIS from 2001 to 2015 (bottom). Dominant scale of variability was determined per pixel from normalized, detrended and Fourier-decomposed time series as the time scale containing highest relative variance.

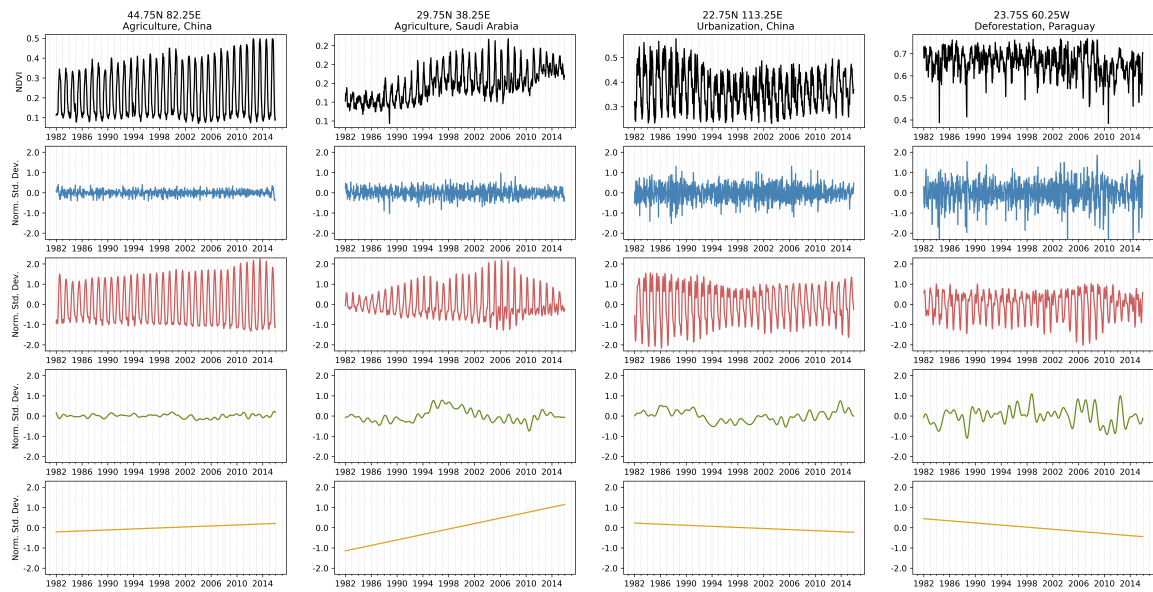


Figure S6: **Assessment of the effect of land cover change over time on decomposition results of NDVI time series** Four pixels with $>25\%$ change in vegetation type according to Song et al. (2018) are displayed (columns), representing from left to right: (i) short vegetation gain, (ii) bare ground loss, (iii) bare ground gain, and (iv) tree loss. Rows from top to bottom: integrated NDVI signal (black), short-term oscillation (blue), seasonal oscillation (red), longer-term oscillation (green), and trend (yellow). Time series were normalized and detrended before Fourier decomposition.

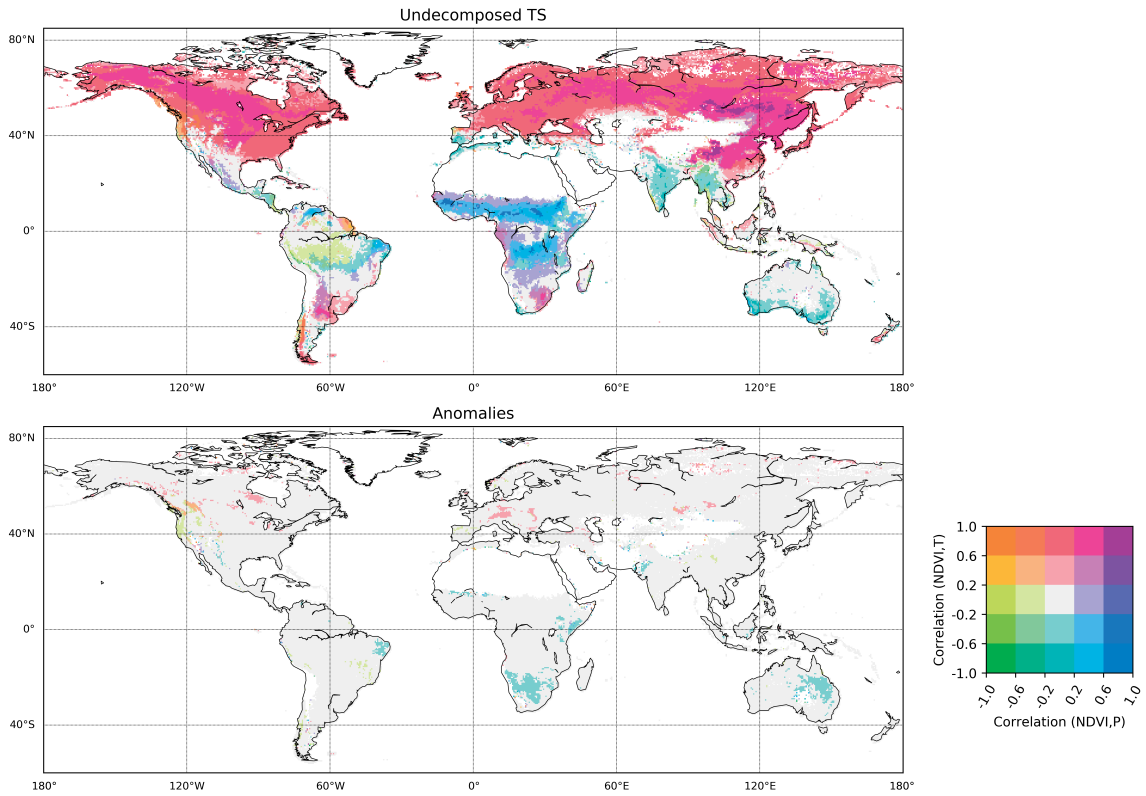


Figure S7: **Bicolor map of undecomposed time series (top) and detrended, deseasonalized anomalies (bottom)**. Pearson correlation of NDVI with precipitation (Prec, legend x axis) and air temperature (T_{air} , legend y axis) is shown at each grid cell. NDVI was lagged one time step (15 days) behind precipitation to allow response time, T_{air} was correlated instantaneously. Color scale represents both correlations, binned into quantiles (e. g. purple – high positive correlation of NDVI with both T_{air} and Prec, green – high negative correlation of NDVI with both T_{air} and Prec). Data points where $NDVI < 0.2$ were excluded to avoid influence of inactive vegetation or non-vegetated time points.

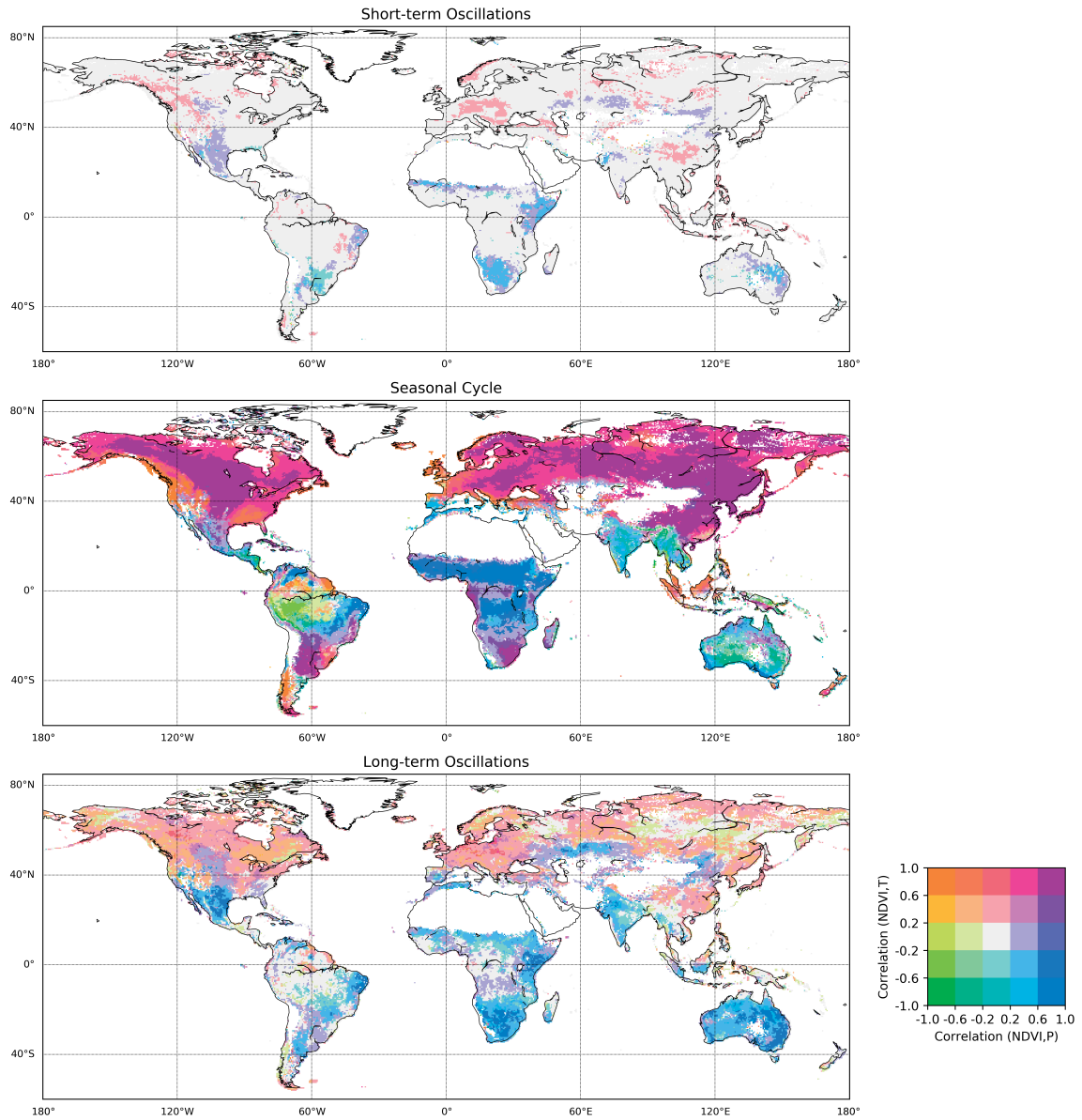


Figure S8: **Bicolor map of Spearman correlations between NDVI, air temperature (T_{air}) and precipitation (Prec).** Correlation of NDVI with T_{air} (legend y axis) and NDVI with Prec (legend x axis) were calculated between decomposed signals at each grid cell for each time scale (rows). NDVI was lagged one time step (15 days) behind precipitation to allow response time, T_{air} was correlated instantaneously. Color scale represents both correlations, binned into quantiles (e. g. purple – high positive correlation of NDVI with both T_{air} and Prec, green – high negative correlation of NDVI with both T_{air} and Prec). Data points where NDVI < 0.2 were excluded to avoid influence of inactive vegetation or non-vegetated time points. The semi-annual cycle is included in the seasonal band.

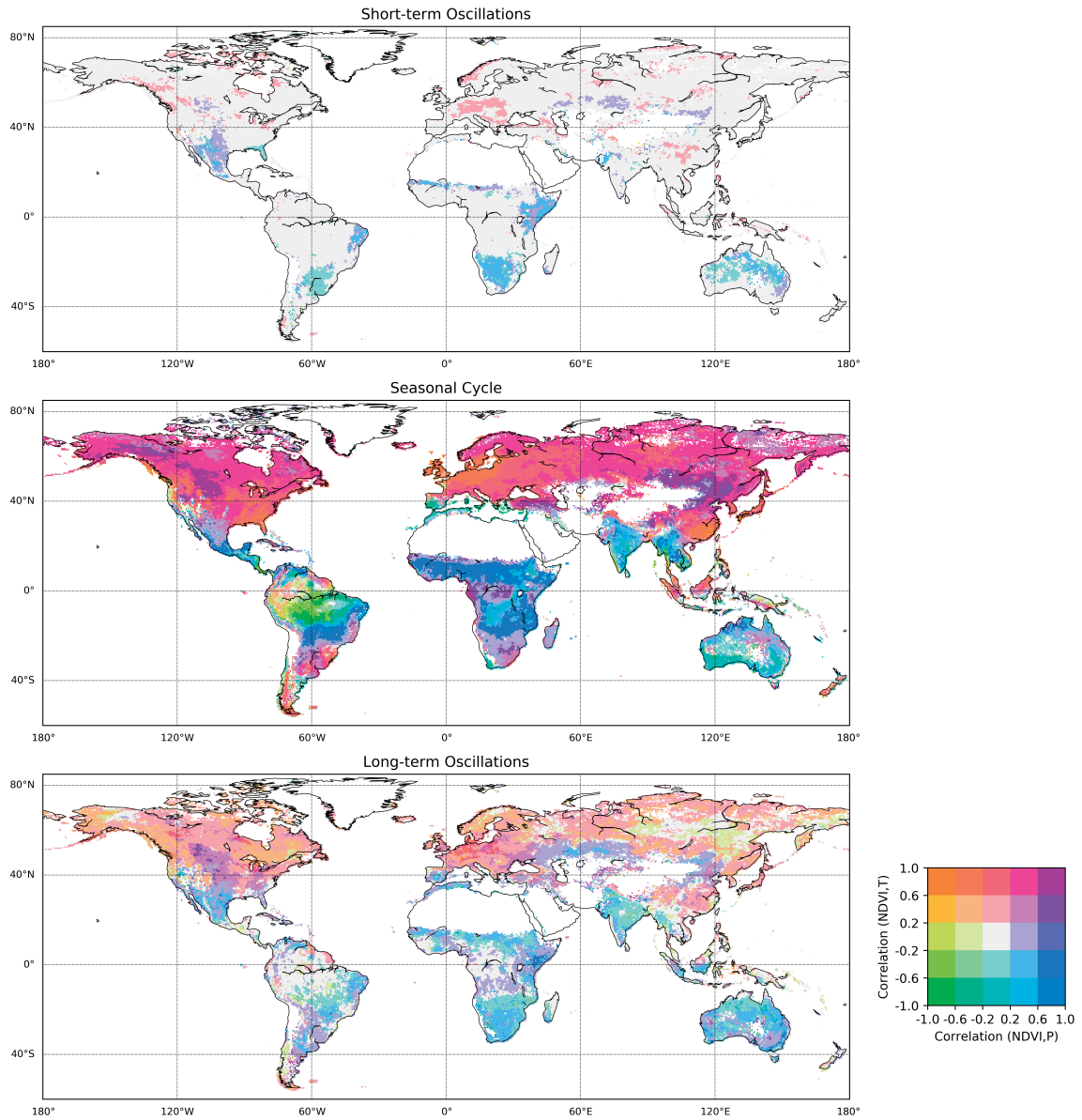


Figure S9: **Bicolor map of Partial correlations between NDVI, air temperature (T_{air}) and precipitation (Prec).** Correlation of NDVI with T_{air} (legend y axis) and NDVI with Prec (legend x axis) were calculated between decomposed signals at each grid cell for each time scale (rows). NDVI was lagged one time step (15 days) behind precipitation to allow response time, T_{air} was correlated instantaneously. Color scale represents both correlations binned into quantiles (e. g. purple – high positive correlation of NDVI with both T_{air} and Prec, green – high negative correlation of NDVI with both T_{air} and Prec). Data points where NDVI < 0.2 were excluded to avoid influence of inactive vegetation or non-vegetated time points. The semi-annual cycle is included in the seasonal band.

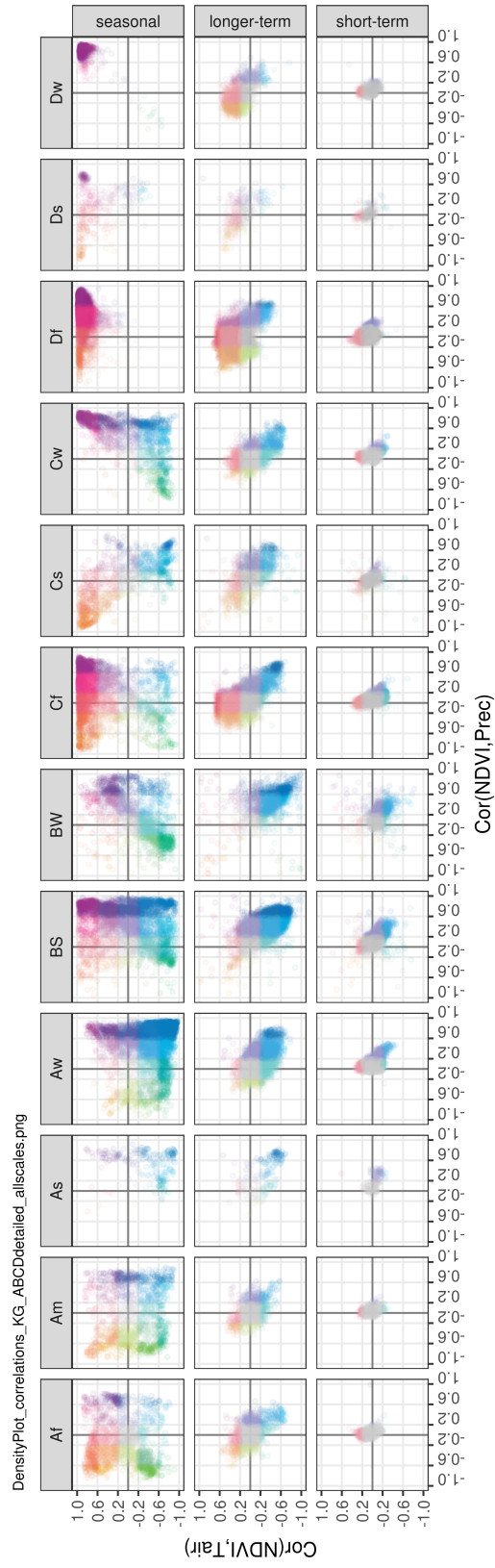


Figure S10: **Köppen-Geiger classes in “correlation space” across time scales.** Correlations of NDVI with precipitation (x axis) and air temperature (y axis) as determined for Fig. 3 were plotted for each time scale (rows) and Köppen-Geiger class (columns). Each point represents one 0.5° grid cell from the global map. Transparency was scaled with the area represented by the grid cell, colors represent both correlations in accordance with to Fig. 3 binned into quantiles (e. g. purple – high positive correlation of NDVI with both T_{air} and Prec, green – high negative correlation of NDVI with both T_{air} and Prec).

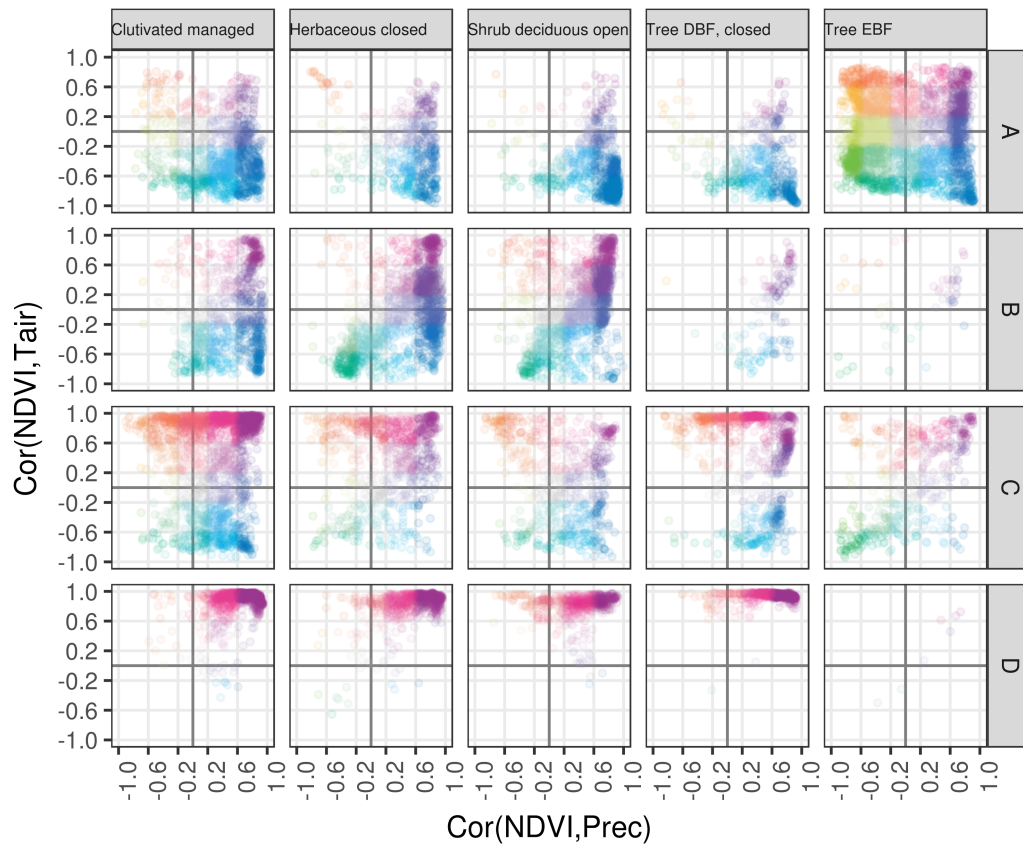


Figure S11: **Land cover classes in “correlation space” across Köppen–Geiger classes for seasonal scale.** Correlations of NDVI with precipitation (x axis) and air temperature (y axis) as determined for Fig. 3 were plotted for major land cover classes (GLC2000, columns) across Köppen–Geiger classes (rows). Each point represents one 0.5° grid cell from the global map. Transparency was scaled with the area represented by the grid cell, colors represent both correlations in accordance with to Fig. 3 binned into quantiles (e. g. purple – high positive correlation of NDVI with both T_{air} and Prec, green – high negative correlation of NDVI with both T_{air} and Prec). A – equatorial, B – arid, C – warm temperate, D – snow)

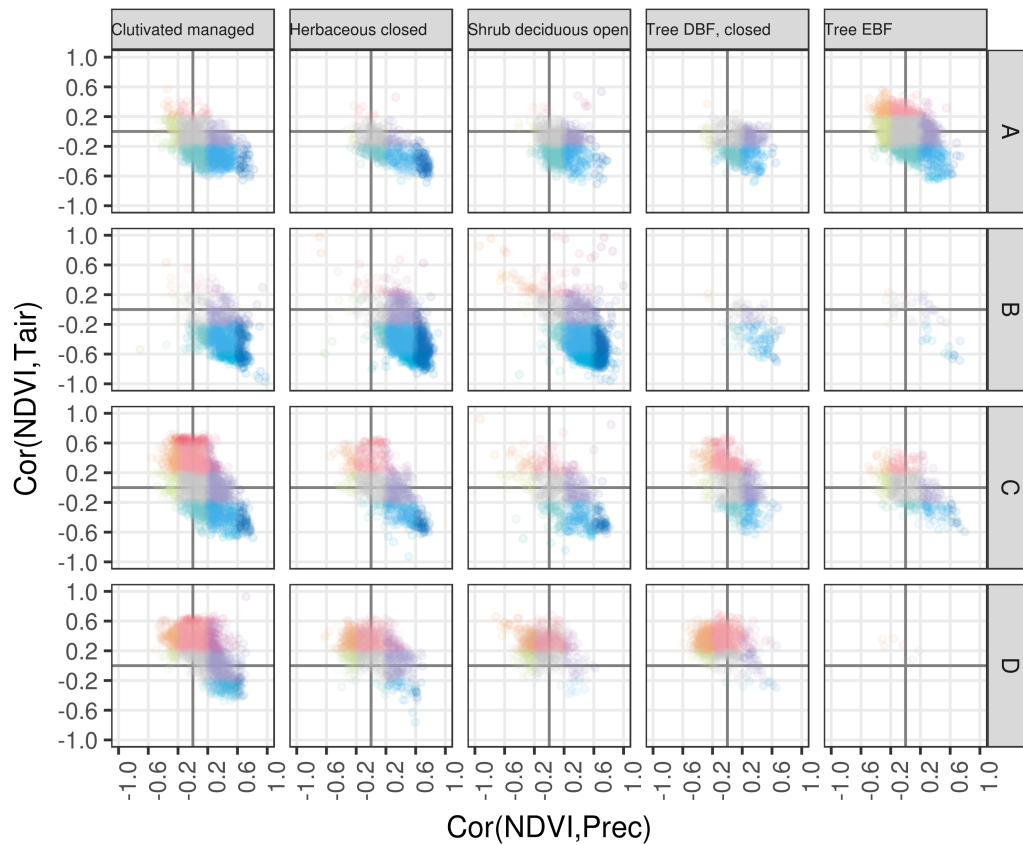


Figure S12: **Land cover classes in “correlation space” across Köppen–Geiger classes for longer–term scale.** Correlations of NDVI with precipitation (x axis) and air temperature (y axis) as determined for Fig. 3 were plotted for major land cover classes (GLC2000, columns) across Köppen–Geiger classes (rows). Each point represents one 0.5° grid cell from the global map. Transparency was scaled with the area represented by the grid cell, colors represent both correlations in accordance with to Fig. 3 binned into quantiles (e. g. purple – high positive correlation of NDVI with both T_{air} and Prec, green – high negative correlation of NDVI with both T_{air} and Prec). A – equatorial, B – arid, C – warm temperate, D – snow)

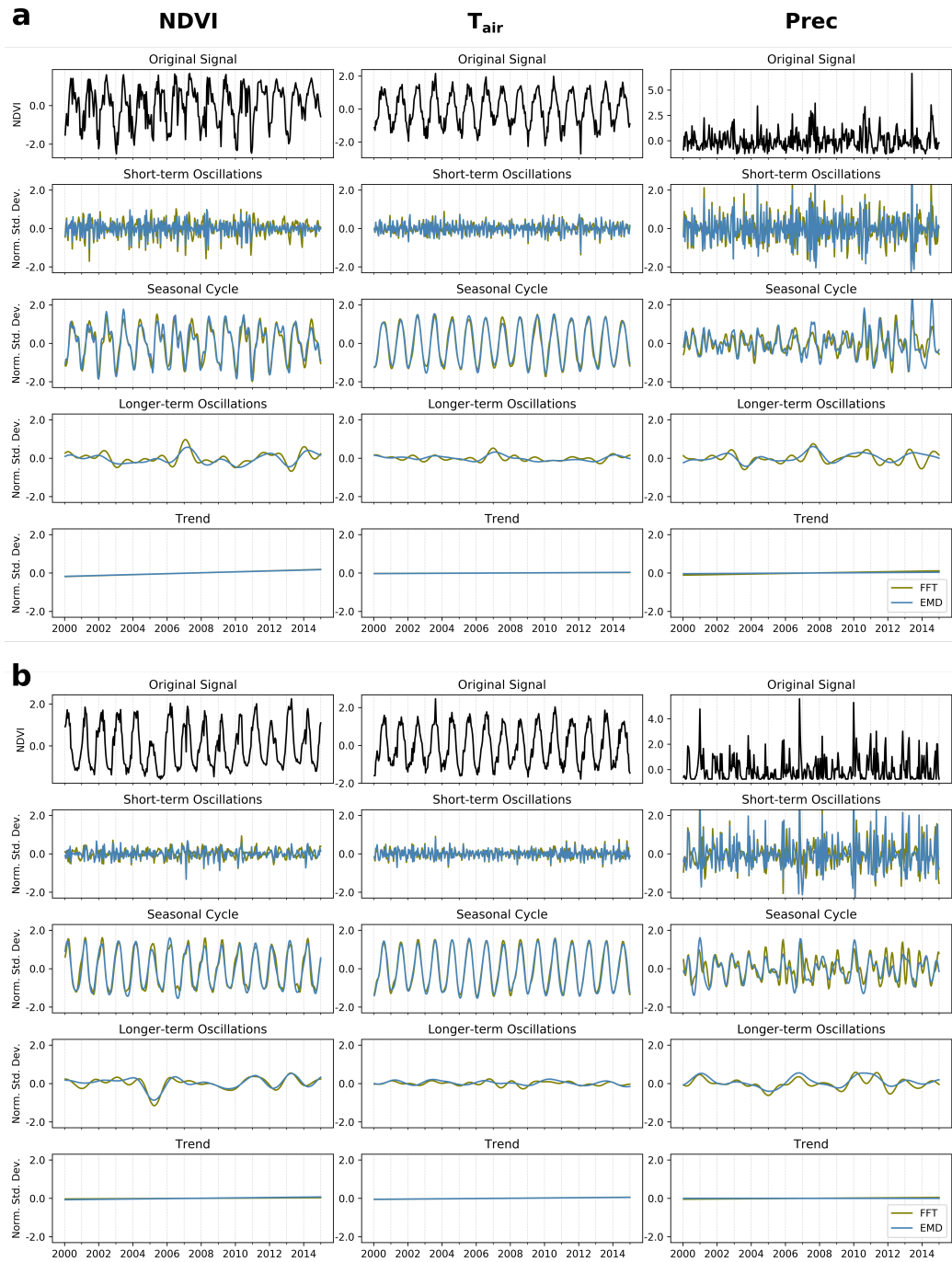


Figure S13: **Temporal comparison of Fourier transformation (FFT) and Empirical Mode Decomposition (EMD)**. Time series examples for **a**. Germany (lon. 11° , lat. 51°), and **b**. southern Portugal (lon. -8° , lat. 38°) of decomposed time series of NDVI, air temperature (T_{air}) and precipitation (Prec) from 2000–2014. FFT signals are colored green, EMD signals are colored blue.

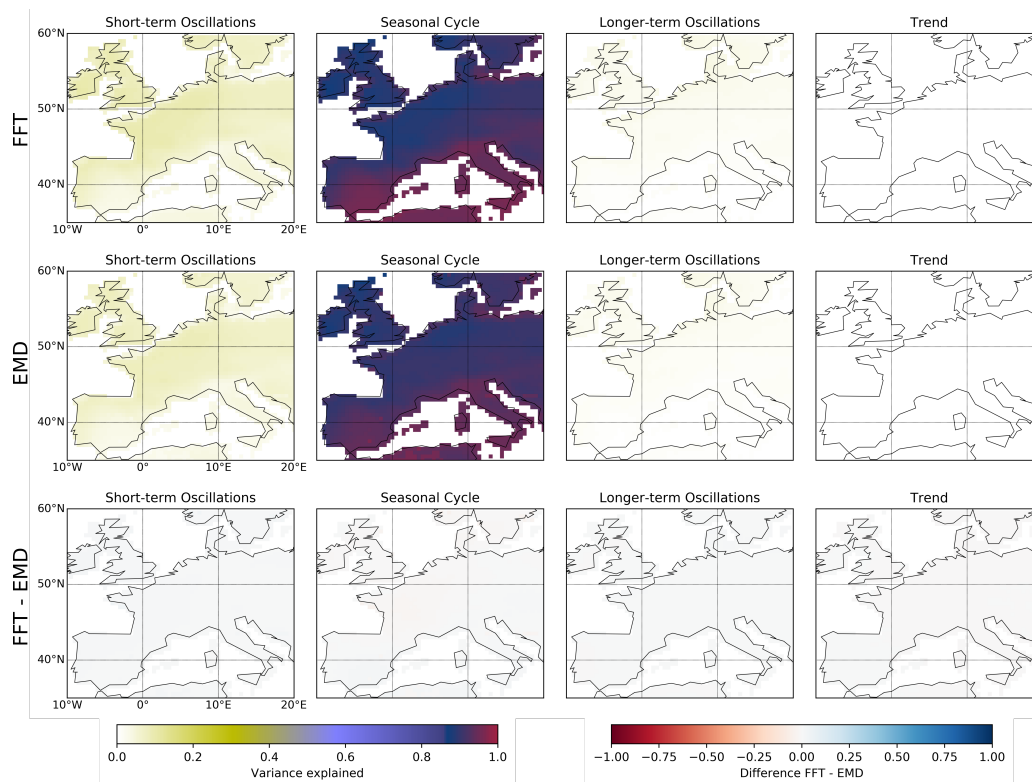


Figure S14: **Spatial comparison of Fourier transformation (FFT) and Empirical Mode Decomposition (EMD)**. Comparison of variance explained per pixel as determined for NDVI time series (2000–2014) by Fourier transformation (FFT, upper row) and empirical mode decomposition (EMD), as well as their difference (lower row) over Europe.

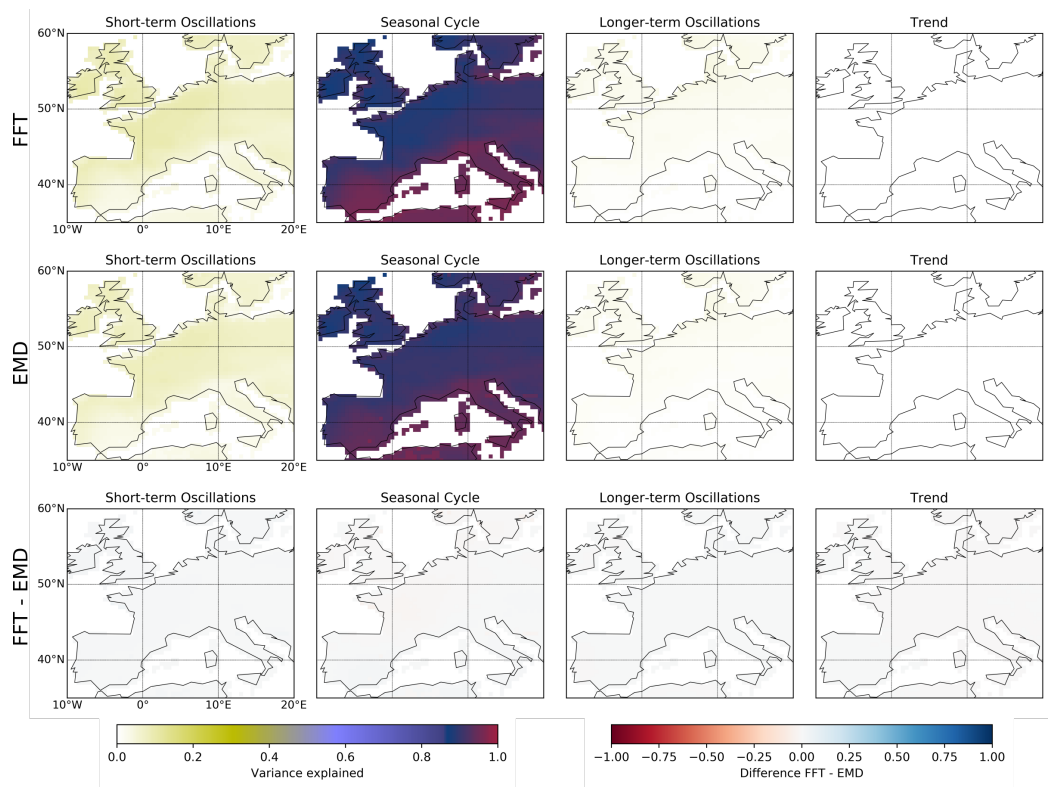


Figure S15: **Spatial comparison of Fourier transformation (FFT) and Empirical Mode Decomposition (EMD)**. Comparison of variance explained per pixel as determined for air temperature time series (2000–2014) by Fourier transformation (FFT, upper row) and empirical mode decomposition (EMD), as well as their difference (lower row) over Europe.

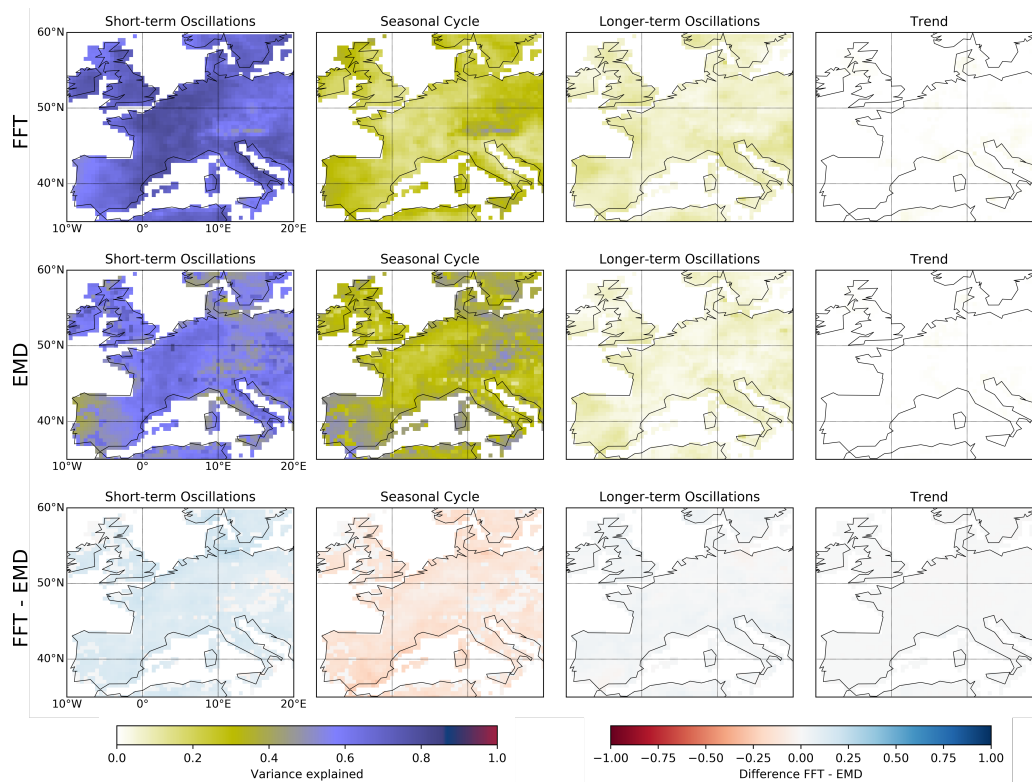


Figure S16: **Spatial comparison of Fourier transformation (FFT) and Empirical Mode Decomposition (EMD)**. Comparison of variance explained per pixel as determined for precipitation time series (2000–2014) by Fourier transformation (FFT, upper row) and empirical mode decomposition (EMD), as well as their difference (lower row) over Europe.

Supplementary Tables

Table S1: Selected and excluded classes from GLC 2000.

Selected land cover classes (natural vegetation)	
Herbaceous cover closed open	Tree cover broadleaved deciduous open
Mosaic: Tree cover other natural vegetation	Tree cover broadleaved evergreen
Regularly flooded shrub and or herbaceous cover	Tree cover mixed leaf type
Shrub cover closed open deciduous	Tree cover needle leaved deciduous
Shrub cover closed open evergreen	Tree cover needle leaved evergreen
Sparse herbaceous or sparse shrub cover	Tree cover regularly flooded fresh water
Tree cover broadleaved deciduous closed	Tree cover regularly flooded saline water
Excluded land cover classes	
Artificial surfaces and associated areas	Mosaic: Cropland / Tree cover / Other natural vegetation
Bare areas	Snow and ice (natural & artificial)
Cultivated and managed areas	Tree cover burnt
Mosaic: Cropland / Shrub or grass cover	Water bodies (natural & artificial)

Table S2: Global weighted mean of decomposed oscillations and three latitudinal bands (i) extratropics northern hemisphere (above 23.5° N), (ii) tropics (23.5° N to 23.5° S) and (iii) extratropics southern hemisphere (below 23.5° S). The mean weights are based on pixel area.

Variable	Region	Short-term	Seasonal	Longer-term	Trend
NDVI	Global	0.18	0.71	0.09	0.02
NDVI	Above 23.5° N	0.1	0.84	0.05	0.01
NDVI	Tropics	0.27	0.59	0.11	0.02
NDVI	Below 23.5° S	0.25	0.46	0.25	0.03
Tair	Global	0.11	0.83	0.04	0.01
Tair	Above 23.5° N	0.05	0.94	0.01	0
Tair	Tropics	0.21	0.68	0.09	0.02
Tair	Below 23.5° S	0.08	0.9	0.02	0
Prec	Global	0.52	0.41	0.06	0
Prec	Above 23.5° N	0.57	0.36	0.06	0
Prec	Tropics	0.42	0.51	0.06	0
Prec	Below 23.5° S	0.68	0.24	0.09	0

Table S3: Summary statistics of total area assessed and percentage of dominant NDVI oscillations by Köppen–Geiger, vegetated land cover classes and dominant oscillations of climatic variables. A: Annual, L: Longer–term, S:Short–term, T: Trend. Values of T are solely presented for area calculations.

Köppen-Geiger classes	Area assessed (km ²)												DOMINANT OSCILLATION OF NDVI											
	S				L				T				Overall percentage (%)			Percentage by class (% rows)			Percentage by dominant NDVI (% cols.)					
	S	A	L	T	S	A	L	T	S	A	L	T	S	A	L	S	A	L	S	A	L			
ColdTemp	20666.8	23707941.1	0.0	10321.0	0.0	31.2	0.0	0.1	99.9	0.0	0.0	0.1	99.9	0.0	0.3	37.1	0.0	0.0	0.0	0.0	0.0			
WarmTemp	1531328.9	11281304.1	336226.0	78194.2	2.0	14.9	0.4	11.6	85.3	2.5	22.4	11.6	85.3	2.5	22.4	17.6	6.9	22.4	17.6	6.9	22.4			
Arid	775669.8	13231895.0	4534532.5	79587.2	1.0	17.4	6.0	4.2	71.1	24.4	11.3	4.2	71.1	24.4	11.3	20.7	92.5	11.3	20.7	92.5	11.3			
Equatorial	4520718.3	15702426.7	30631.2	30043.6	6.0	20.7	0.0	22.3	77.4	0.2	66.0	22.3	77.4	0.2	66.0	24.6	0.6	66.0	24.6	0.6	66.0			
Vegetated land cover classes	S	A	L	T	S	A	L	T	S	A	L	S	A	L	S	A	L	S	A	L	S	A	L	
Herbaceous cover closed open	514350.8	9193800.1	1255570.0	19281.0	0.7	12.1	1.7	4.7	83.7	11.4	7.5	4.7	83.7	11.4	7.5	14.4	25.6	4.7	83.7	11.4	7.5	14.4	25.6	
Mosaic: Tree cover other natural vegetation	138263.4	2050350.8	5415.6	5717.1	0.2	2.7	0.0	6.3	93.2	0.2	2.0	6.3	93.2	0.2	2.0	3.2	0.1	6.3	93.2	0.2	2.0	3.2	0.1	
Regularly flooded shrub and or herbaceous cover	94256.8	1425427.4	51498.3	2849.5	0.1	1.9	0.1	6.0	90.6	3.3	1.4	6.0	90.6	3.3	1.4	2.2	1.0	6.0	90.6	3.3	1.4	2.2	1.0	
Shrub cover closed open deciduous	208024.5	9421620.4	966549.2	33200.1	0.3	12.4	1.3	2.0	88.6	9.1	3.0	2.0	88.6	9.1	3.0	14.7	19.7	2.0	88.6	9.1	3.0	14.7	19.7	
Shrub cover closed open evergreen	210446.9	1688229.8	41985.2	7422.2	0.3	2.2	0.1	10.8	86.7	2.2	3.1	10.8	86.7	2.2	3.1	2.6	0.9	10.8	86.7	2.2	3.1	2.6	0.9	
Sparse herbaceous or sparse shrub cover	637336.7	7667753.4	2404181.6	61753.6	0.8	10.1	3.2	5.9	71.2	22.3	9.3	5.9	71.2	22.3	9.3	12.0	49.1	5.9	71.2	22.3	9.3	12.0	49.1	
Tree cover broadleaved deciduous closed	140333.1	6241346.3	17724.3	19055.9	0.2	8.2	0.0	2.2	97.2	0.3	2.0	2.2	97.2	0.3	2.0	9.8	0.4	2.2	97.2	0.3	2.0	9.8	0.4	
Tree cover broadleaved deciduous open	97232.9	3473408.2	81498.9	0.0	0.1	4.6	0.1	2.7	95.1	2.2	1.4	2.7	95.1	2.2	1.4	5.4	1.7	2.7	95.1	2.2	1.4	5.4	1.7	
Tree cover broadleaved evergreen	4107891.8	7421853.2	17685.7	26480.1	5.4	9.8	0.0	35.5	64.1	0.2	60.0	35.5	64.1	0.2	60.0	11.6	0.4	35.5	64.1	0.2	60.0	11.6	0.4	
Tree cover mixed leaf type	37583.7	3049469.0	2419.7	9124.3	0.0	4.0	0.0	1.2	98.4	0.1	0.5	1.2	98.4	0.1	0.5	4.8	0.0	1.2	98.4	0.1	0.5	4.8	0.0	
Tree cover needle leaved deciduous	0.0	3427749.0	0.0	0.0	0.0	4.5	0.0	0.0	100.0	0.0	0.0	0.0	100.0	0.0	0.0	5.4	0.0	0.0	100.0	0.0	0.0	5.4	0.0	
Tree cover needle leaved evergreen	389722.8	8498764.0	56951.3	13282.3	0.5	11.2	0.1	4.4	94.9	0.6	5.7	4.4	94.9	0.6	5.7	13.3	1.2	4.4	94.9	0.6	5.7	13.3	1.2	
Tree cover regularly flooded fresh water	257565.2	303364.8	0.0	0.0	0.3	0.4	0.0	45.9	54.1	0.0	3.8	45.9	54.1	0.0	3.8	0.5	0.0	45.9	54.1	0.0	3.8	0.5	0.0	
Tree cover regularly flooded saline water	15375.3	60430.6	0.0	0.0	0.0	0.1	0.0	20.3	79.7	0.0	0.2	20.3	79.7	0.0	0.2	0.1	0.0	20.3	79.7	0.0	0.2	0.1	0.0	
Dominant oscillations of Temperature and precipitation*	S	A	L	T	S	A	L	T	S	A	L	S	A	L	S	A	L	S	A	L	S	A	L	
A.A.	2505658.1	26763039.4	0.0	0.0	3.3	35.3	0.0	8.6	91.4	0.0	36.6	8.6	91.4	0.0	36.6	41.9	0.0	8.6	91.4	0.0	36.6	41.9	0.0	
A.S.	3767937.1	36854191.1	4901389.7	198146.0	5.0	48.6	6.5	8.2	80.6	10.7	55.0	8.2	80.6	10.7	55.0	57.7	100.0	5.0	48.6	6.5	55.0	57.7	100.0	
S.A.	0.0	33532.8	0.0	0.0	0.0	0.0	0.0	0.0	100.0	0.0	0.0	0.0	100.0	0.0	0.0	0.1	0.0	0.0	100.0	0.0	0.0	0.1	0.0	
S.S.	338242.5	196420.7	0.0	0.0	0.4	0.3	0.0	63.3	36.7	0.0	4.9	63.3	36.7	0.0	4.9	0.3	0.0	0.4	0.3	0.0	4.9	0.3	0.0	
L.S.	236346.1	0.0	0.0	0.0	0.3	0.0	0.0	100.0	0.0	0.0	3.5	100.0	0.0	0.0	3.5	0.0	0.0	0.3	0.0	0.0	3.5	0.0	0.0	
L.A.	0.0	76383.0	0.0	0.0	0.0	0.1	0.0	0.0	100.0	0.0	0.0	0.0	100.0	0.0	0.0	0.1	0.0	0.0	100.0	0.0	0.0	0.1	0.0	
Percentage area assessed (%)	9.03	84.25	6.46	0.26																				
Total area assessed (km²)	75871466.5																							

*A: Annual, S: Short-term oscillation, L: Longer-term oscillation, T: Trend

References

- Song, X.-P., Hansen, M. C., Stehman, S. V., Potapov, P. V., Tyukavina, A., Vermote, E. F., & Townshend, J. R. (2018, August). Global land change from 1982 to 2016. *Nature*, *560*, 639–643. doi: 10.1038/s41586-018-0411-9