

# Convergence of the Non-Uniform Directed Physarum Model

Enrico Facca\*    Andreas Karrenbauer†    Pavel Kolev†    Kurt Mehlhorn†

June 20, 2019

## Abstract

The directed Physarum dynamics is known to solve positive linear programs: minimize  $c^T x$  subject to  $Ax = b$  and  $x \geq 0$  for a positive cost vector  $c$ . The directed Physarum dynamics evolves a positive vector  $x$  according to the dynamics  $\dot{x} = q(x) - x$ . Here  $q(x)$  is the solution to  $Af = b$  that minimizes the “energy”  $\sum_i c_i f_i^2 / x_i$ .

In this paper, we study the non-uniform directed dynamics  $\dot{x} = D(q(x) - x)$ , where  $D$  is a positive diagonal matrix. The non-uniform dynamics is more complex than the uniform dynamics (with  $D$  being the identity matrix), as it allows each component of  $x$  to react with different speed to the differences between  $q(x)$  and  $x$ . Our contribution is to show that the non-uniform directed dynamics solves positive linear programs.

## 1 Introduction

*Physarum Polycephalum* is a slime mold that apparently is able to solve shortest path problems. Nakagaki, Yamada, and Tóth [NYT00] report about the following experiment; see Figure 2. They built a maze, covered it by pieces of Physarum (the slime can be cut into pieces, which will reunite if brought into vicinity), and then fed the slime with oatmeal at two locations. After a few hours the slime retracted to a path following the shortest path in the maze connecting the food sources. The authors report that they repeated the experiment with different mazes; in all experiments, Physarum retracted to the shortest path. The paper [TKN07] proposes a mathematical model, the *Physarum dynamics*, for the behavior of the slime in the form of a system of coupled differential equations. In [BMV12, Bon13] it was shown that the Physarum dynamics solves the shortest path problem and the transportation problem. It was soon asked by the theory community whether the dynamics can solve more general problems.

A variant of the Physarum dynamics, the directed Physarum dynamics, is known to solve positive linear programs in standard form [JZ12, SV16b]. A positive linear program asks to minimize a linear function  $c^T x$  with a positive cost vector  $c \in \mathbb{R}_{>0}^m$  subject to the constraints  $Ax = b$  and  $x \geq 0$ . Here  $A \in \mathbb{R}^{n \times m}$  and  $b \in \mathbb{R}^n$ . Formally,

$$\text{minimize } c^T x \text{ subject to } Ax = b, x \geq 0. \quad (1)$$

We assume throughout that the system is feasible and use

$$I = \{ i \mid i \in \text{supp}(x^*) \text{ for some optimal solution } x^* \text{ to (1)} \}$$

\*Department of Mathematics, University of Padova, Italy

†MPI for Informatics, Saarland Informatics Campus, Germany

to denote the union of the supports of optimal solutions and

$$F = \{ x \mid x \text{ is a feasible solution to (1)} \}$$

to denote the set of feasible solution. In order to avoid trivialities, we assume  $I \neq \emptyset$ . The *directed Physarum dynamics* is defined as the dynamical system operating on  $x \in \mathbb{R}_{>0}^m$  according to

$$\dot{x} = q(x) - x, \quad (2)$$

where for  $x > 0$ ,

$$q(x) = \operatorname{argmin}_f \left\{ \sum_i c_i f_i^2 / x_i \mid Af = b \right\}$$

is the minimum energy solution of  $Af = b$  according to the weights (“resistances”)  $c_i/x_i$ . The system is initialized to a point  $x^0 \in G := \{ x \mid x > 0 \} \subseteq \mathbb{R}^m$ , i.e.,  $x(0) = x^0 \in G$ .

**Theorem 1** ([JZ12, SV16b]). *The dynamics (2) has a solution  $x(t) \in G$  with  $t \in [0, \infty)$ . The solution satisfies*

1.  $\inf_t x_i(t) > 0$  for all  $i \in I$ ,
2.  $\operatorname{dist}(x(t), F) \rightarrow 0$  as  $t \rightarrow \infty$ , and
3.  $\lim_{t \rightarrow \infty} c^T x(t) = c^T x^*$ .

In this paper, we study the *non-uniform Physarum dynamics*

$$\dot{x} = D(q(x) - x), \quad (3)$$

where  $D \in \mathbb{R}_{\geq 0}^{m \times m}$  is a diagonal matrix with positive entries  $D_{ii} = d_i > 0$ , i.e., the different components of  $x$  react with different speed to differences between  $q(x)$  and  $x$ . Again the system is initialized to a point  $x^0 \in G$ , i.e.,  $x(0) = x^0$ . The original and the non-uniform Physarum dynamics are both inspired by the study of the slime mold Physarum Polycephalum; see Section 2. We generalize the theorem above to the non-uniform dynamics.

**Theorem 2.** *The dynamics (3) has a solution  $x(t) \in G$  with  $t \in [0, \infty)$ . The solution satisfies*

1.  $\inf_t x_i(t) > 0$  for all  $i \in I$ ,
2.  $\operatorname{dist}(x(t), F) \rightarrow 0$  as  $t \rightarrow \infty$ , and
3.  $\lim_{t \rightarrow \infty} c^T x(t) = c^T x^*$ .

This theorem was claimed in [BBD<sup>+</sup>13], albeit with an incorrect proof; see Section 2. We note that the non-uniform dynamics (3) is more complex than the uniform dynamics (2). For example, if  $x(0)$  is a feasible solution to (1), then the solution  $x(t)$  is feasible<sup>1</sup> for all  $t$ . In contrast, the non-uniform dynamics may move out of feasibility as Figure 1 illustrates.

A fundamental tool for proving convergence of a dynamical system is a Lyapunov function. It is a function defined on the states of the system whose derivative with respect to time is non-positive. We exhibit a Lyapunov function for the dynamics (3). Let  $x^*$  be any optimal solution to (1) with  $I =$

<sup>1</sup> Consider  $y(t) = Ax(t) - b$ . Then  $\dot{y} = A\dot{x} = A(q - x) = b - Ax = -y$ . Thus  $y_i(t) = y_i(0)e^{-t}$  for all  $t$  and hence  $y_i(0) = 0$  implies  $y_i(t) = 0$  for all  $t$ . In particular, if  $x(0)$  is feasible,  $x(t)$  is feasible for all  $t$ . More generally, for arbitrary initial point, the residual  $Ax(t) - b$  converges to zero exponentially fast.

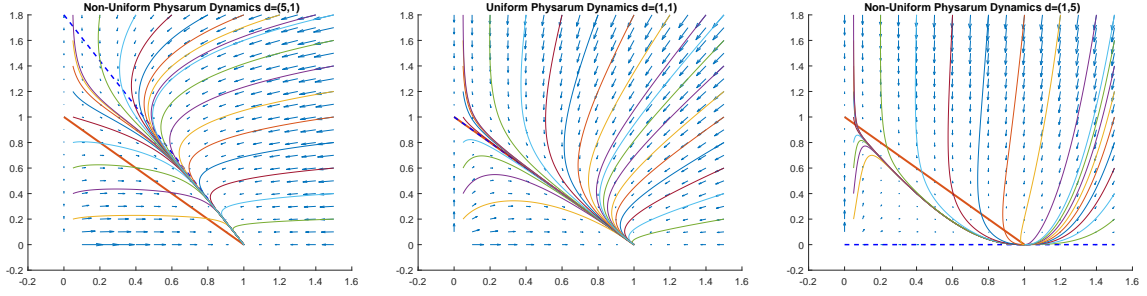


Figure 1: Consider the linear program “minimize  $x_1 + 2x_2$  subject to  $x_1 + x_2 = 1$  and  $x \geq 0$ ”. The plot shows the flow fields  $\dot{x}(t)$  of the corresponding non-uniform dynamics  $d = (5, 1)$ , the uniform dynamics  $d = (1, 1)$  and the non-uniform dynamics  $d = (1, 5)$ , respectively. The **feasible region** “ $x_1 + x_2 = 1, x \geq 0$ ” is shown in **red**. Also, several trajectories of  $x(t)$  are depicted. For the uniform dynamics, the trajectories converge to the feasible region exponentially fast. In contrast, the solutions to the non-uniform dynamics converge to the feasible region only when they reach the optimal point  $(1, 0)$ . Note that in the right plot ( $d_1 = 1$  and  $d_2 = 5$ ), the solutions enter the optimal point horizontally. Whether the solution enters from the left or from the right depends on the initial point. In the plot on the left ( $d_1 = 5, d_2 = 1$ ), the solutions enter the optimal point with slope  $-9/5$ . The **dashed blue line** depicts this slope and an analytical solution is presented in Section 6.

$\text{supp}(x^*)$  (note that a convex combination of optimal solutions is also an optimal solution. Therefore there is an optimal solution with support equal to  $I$ ) and consider

$$V(x) = 2c^T D^{-1}x - \sum_i \frac{c_i x_i^*}{d_i} \ln x_i \quad (4)$$

**Theorem 3.**  $\dot{V}(x) \leq 0$  for all  $x \in G$  and there is a constant  $C$  (depending on  $x(0)$ ) such that  $V(x(t)) \geq C$  for all  $t \in (0, \infty)$ .

It follows that  $\lim_{t \rightarrow \infty} V(x(t))$  exists and  $\lim_{t \rightarrow \infty} \dot{V}(x(t)) = 0$ . By the first item of Theorem 2 any limit point <sup>2</sup> of the dynamics (3) will lie in

$$G^* = \{x \mid x \geq 0 \text{ and } x_i > 0 \text{ for all } i \in I\}.$$

It then follows that the dynamics converges to the set

$$E = \{x \in G^* \mid \dot{V}(x) = 0\}.$$

We will see below that  $\dot{V}(x) = 0$  implies  $c^T x = c^T x^*$  and  $q(x) = x$ . In particular,  $x \in E$  implies  $x \geq 0$  and  $x_i > 0$  for  $i \in \text{supp}(x^*)$ ,  $q(x) = x$ , i.e.,  $x$  is a fixed point of the dynamics and a feasible solution to the LP (since  $Ax = Aq(x) = b$ ), and  $c^T x = c^T x^*$ , i.e.,  $x$  is an optimal solution to the LP.

This paper is structured as follows. In Section 2 we review the biological background and discuss related work. In Section 3 we prove existence of a solution with domain  $[0, \infty)$ . In Section 4 we analyze the Lyapunov function. In Section 5 we complete the proof of Theorem 2. In Section 6, we study in more detail how the solution approaches the optimum in the example of Figure 1.

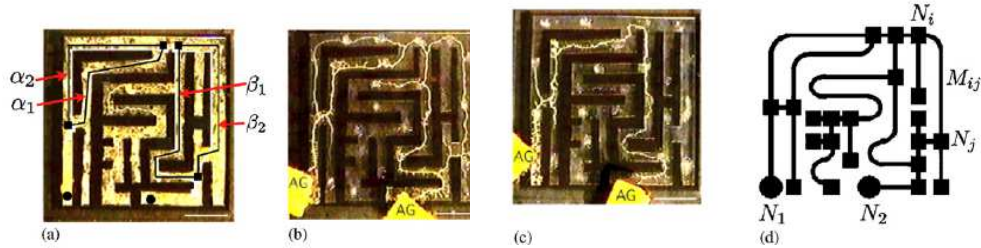


Figure 2: The experiment in [NYT00] (reprinted from there): (a) shows the maze uniformly covered by Physarum; yellow color indicates presence of Physarum. Food (oatmeal) is provided at the locations labeled AG. After a while the mold retracts to the shortest path connecting the food sources as shown in (b) and (c). (d) shows the underlying abstract graph. The video [Vid] shows the experiment.

## 2 Biological Background and Related Work

*Physarum Polycephalum* is a slime mold that apparently is able to solve shortest path problems. Nakagaki, Yamada, and Tóth [NYT00] report about the following experiment; see Figure 2. They built a maze, covered it by pieces of Physarum (the slime can be cut into pieces which will reunite if brought into vicinity), and then fed the slime with oatmeal at two locations. After a few hours the slime retracted to a path following the shortest path in the maze connecting the food sources. The authors report that they repeated the experiment with different mazes; in all experiments, Physarum retracted to the shortest path.

The paper [TKN07] proposes a mathematical model for the behavior of the slime and argues extensively that the model is adequate. Physarum is modeled as an electrical network with time varying resistors. We have a simple *undirected* graph  $G = (N, E)$  with two distinguished nodes modeling the food sources. Each edge  $e \in E$  has a positive length  $c_e$  and a positive capacity  $x_e(t)$ ;  $c_e$  is fixed, but  $x_e(t)$  is a function of time. The resistance  $r_e(t)$  of  $e$  is  $r_e(t) = c_e/x_e(t)$ . In the electrical network defined by these resistances, a current of value 1 is forced from one of the distinguished nodes to the other. For an (arbitrarily oriented) edge  $e = (u, v)$ , let  $q_e(t)$  be the resulting current over  $e$ . Then, the capacity of  $e$  evolves according to the differential equation

$$\dot{x}_e(t) = |q_e(t)| - x_e(t), \quad (5)$$

where  $\dot{x}_e$  is the derivative of  $x_e$  with respect to time.

Nakagaki et.-al. [NIU+07] pointed out that different edge may react with different speed to the differences between flow and capacity. For example, Physarum prefers darkness over bright light and hence edges in a bright environment react differently than edges in darkness. This led to the non-uniform dynamics

$$\dot{x}_e = d_e(|q_e| - x_e), \quad (6)$$

where  $d_e$  is an indicator for the reactivity of an edge.

The biological experiments concern shortest paths. The papers [BMV12, Bon13] showed that the Physarum dynamics can solve the shortest path problem and the transportation problem; here  $A$  is the node-arc incidence matrix of a directed graph,  $b$  is the supply-demand vector of a transportation problem, i.e.,  $\sum_i b_i = 0$ , and  $c > 0$  are the edge costs. The theoretical literature soon asked whether the

<sup>2</sup>A point  $p$  is a (positive) limit point if there is a sequence  $t_n \rightarrow \infty$  such that  $x(t_n) \rightarrow p$  as  $n \rightarrow \infty$ .

dynamics (5) can also solve more general problems. [SV16a] extends the result to more general flow problems and [BBK<sup>+</sup>19, FCP18] show that it can solve linear programs of the form “minimize  $c^T|x|$  subject to  $Ax = b$ ”, where  $c$  is a positive vector. This was generalized to the non-uniform dynamics (6) in [KKM19].

The directed version of the Physarum dynamics evolves according to the equation

$$\dot{x}_e = q_e - x_e. \quad (7)$$

No biological significance is claimed for this dynamics. It can solve linear programs with positive cost vectors [IJNT11, SV16b]: “minimize  $c^T x$  subject to  $Ax = b, x \geq 0$ . In [BBD<sup>+</sup>13], convergence was claimed for the non-uniform dynamics  $\dot{x}_e = d_e(q_e - x_e)$ . The proof is incorrect.<sup>3</sup>

### 3 Existence of a Solution

As mentioned above, we show that the dynamics (3) with starting point  $x(0) \in G$  has domain  $[0, \infty)$  and stays in  $G$ . Moreover, for the limit points of the dynamics, the coordinates in  $I$  are positive and the coordinates outside  $I$  are zero. In order to talk conveniently about these limit points, we define the dynamics on a superset of  $G$ . Let

$$G^* = \{x \mid x \geq 0 \text{ and } x_i > 0 \text{ for } i \in I\} = \cup_{B; I \subseteq B \subseteq [m]} G_B^*,$$

where

$$G_B^* = \{x \mid x_j > 0 \text{ for } j \in B \text{ and } x_j = 0 \text{ for } j \in [m] \setminus B\}.$$

We can define  $q(x)$  for any  $x \in G^*$ :

$$q(x) = \operatorname{argmin}_f \left\{ \sum_{i \in \operatorname{supp}(x)} c_i f_i^2 / x_i \mid Af = b \text{ and } \operatorname{supp}(f) \subseteq \operatorname{supp}(x) \right\}.$$

be the minimum energy solution  $q(x)$  with respect to the resistances  $r_i = c_i/x_i$  and with support contained in  $\operatorname{supp}(x)$ . The following characterization of  $q(x)$  is well-known. We use  $R = R(t)$  to denote the diagonal matrix with diagonal entries  $c_i/x_i$ .

<sup>3</sup> In the unpublished proof of Lemma 10, the authors argue: “We first follow the development in [IJNT11], taking the reactivities into account. From

$$\frac{d}{ds} x_e e^{a_e s} = \dot{x}_e e^{a_e s} + a_e x_e e^{a_e s} = a_e (q_e - x_e) e^{a_e s} + a_e x_e e^{a_e s} = a_e q_e e^{a_e s}$$

we have

$$x_e(t) e^{a_e t} - x_e(0) = \int_0^t a_e q_e(s) e^{a_e s} ds$$

and hence

$$x_e(t) = x_e(0) e^{-a_e t} + \int_0^t a_e q_e(s) e^{-a_e(t-s)} ds = x_e(0) e^{-a_e t} + (1 - e^{-a_e t}) \int_0^t a_e q_e(s) \frac{e^{-a_e(t-s)}}{1 - e^{-a_e t}} ds.$$

Let

$$\bar{q}_e(t) = \int_0^t a_e q_e(s) \frac{e^{-a_e(t-s)}}{1 - e^{-a_e t}} ds.$$

Since  $\int_0^t e^{-a_e(t-s)} ds = (1 - e^{-a_e t})/a_e$ ,  $\bar{q}_e(t)$  is a convex combination of flows and hence a flow.” This argument is fallacious. For each edge  $\bar{q}_e$  is a convex combination. But these combinations are not uniform over edges. Therefore  $\bar{q}$  is NOT a convex combination of flows.

**Lemma 1.** For  $x \in G^*$ , let  $B = \text{supp}(x)$  and  $N = [m] \setminus B$ . Obtain  $R_B$  by deleting the rows and columns corresponding to  $N$ , obtain  $A_B$  from  $A$  by first deleting the columns in  $N$  and then keeping a maximum set of independent rows, let  $b_B$  be the restriction of  $b$  to these rows, and let  $p_B$  be a vector of the same dimension as  $b_B$ . Then  $q(x)$  is uniquely determined by  $q = (q_B, q_N)$ ,  $q_N = 0$ ,  $q_B = R_B^{-1} A_B^T p_B$ , where  $p_B = (A_B R_B^{-1} A_B)^{-1} b_B$ . Defining  $p_h = 0$  for  $h \notin B$ , we have the equalities  $b^T p = q^T R q$ .

*Proof.* For simplicity, we assume  $\text{supp}(x) = [m]$ . By the KKT conditions for convex optimization, the optimal solution  $q$  must satisfy  $Rq = A^T p$  for some  $p$ . Since  $Aq = b$  this implies,  $AR^{-1}A^T p = b$  and  $q = R^{-1}A^T p$ . The matrix  $AR^{-1}A^T$  is non-singular since  $R$  is a diagonal matrix with positive entries and  $A$  has full row rank. Then,  $b^T p = b_B^T p_B = (A_B R_B^{-1} A_B)^T p_B = q_B^T R_B R_B^{-1} A_B^T p_B = q_B^T R_B q_B = q^T R q$ .  $\square$

The Physarum dynamics for  $x \in G^*$  becomes

$$\dot{x}_i = f_i(x) := \begin{cases} d_i(q_i - x_i) & \text{if } i \in \text{supp}(x) \\ 0 & \text{if } i \notin \text{supp}(x) \end{cases} \quad (8)$$

We show existence of a solution with domain  $[0, \infty)$  for each initial point  $x^0 \in G^*$ . Our argument is based on [SV16b]. Let

$$M = \max\{\text{absolute value of the determinant of a square submatrix of } A\}.$$

**Fact 1** (Lemma 3.3 in [BBK<sup>+</sup>19]). For every  $x \in G^*$ :  $\|q(x)\|_\infty \leq \beta := M\|b\|_1$ .

**Fact 2** (Lemma 5.2 in [SV16b]). Let  $x \geq 0$ ,  $B = \text{supp}(x) \neq \emptyset$ ,  $L_B = A_B R_B^{-1} A_B^T$  and let  $A_i$  be the  $i$ -th column of  $A_B$ . For every  $i \in B$  it holds that

$$\|A_B^T L_B^{-1} A_i\|_\infty \leq \frac{c_i}{x_i} \cdot M$$

**Lemma 2.** Suppose  $x : [0, T) \mapsto G$  is a solution to (3) for some  $T > 0$ . Let  $B = \text{supp}(x(0))$ . Then

- $x_i(t) \leq \max(x_i(0), \beta)$  for  $i \in [m]$  and  $t \in [0, T)$ .
- $x(T) = \lim_{t \rightarrow T^-} x(t)$  exists.
- $x_i(T) > 0$  for every  $i \in I$ .
- $x_i(T) > 0$  for every  $i \in B$ .

*Proof.* Let  $i \in B$  be arbitrary.

a) By Fact 1,  $\dot{x}_i = d_i(q_i - x_i) \leq d_i(\beta - x_i)$ . Let  $y_i(t) = (x_i(t) - \beta)/d_i$ . Then  $\dot{y}_i \leq -d_i y_i(t)$  and hence  $y_i(t) \leq y_i(0)e^{-d_i t}$  BY GRONWALL'S LEMMA. Thus

$$x_i(t) \leq \beta + (x_i(0) - \beta)e^{-d_i t} \leq \max(x_i(0), \beta).$$

b) We know that  $x_i$  is differentiable in the interval  $[0, T)$  and

$$|\dot{x}_i(t)| = d_i |q_i(t) - x_i(t)| \leq d_i (|q_i(t)| + |x_i(t)|) \leq d_i (\beta + \max(x_i(0), \beta)).$$

Since every function that has bounded first derivatives is Lipschitz, the limit  $x(T) = \lim_{t \rightarrow T^-} x(t)$  exists.

c) Let  $y$  be an optimal solution with  $\text{supp}(y) = I$ . Note that  $I \subseteq \text{supp}(x(0))$ . Consider the barrier function

$$W(t) = \sum_{j \in I} \frac{c_j y_j}{d_j} \ln x_j(t).$$

Since  $x_j(t)$  is bounded by part a), so is  $W(t)$ . Suppose for a contradiction that  $\inf_{t \in [0, T]} x_i(t) = 0$  for some  $i \in I$ . Then, it follows that  $\inf_{t \in [0, T]} W(t) = -\infty$ , implying that  $\inf_{t \in [0, T]} \dot{W}(t) = -\infty$ . However, since

$$\sum_{j \in I} y_j r_j(t) q_j(t) = y^T R(t) q(t) = y^T A^T p(t) = b^T p(t) = q(t)^T R(t) q(t) \geq 0$$

we obtain a contradiction to

$$\dot{W}(t) = \sum_{j \in I} \frac{c_j y_j}{d_j} \cdot d_j \left[ \frac{q_j(t)}{x_j(t)} - 1 \right] \geq -c^T y = -O(1).$$

d) Let  $y$  be an optimal solution to (1) with  $\text{supp}(y) = I$ . By part c), we have  $x_i(t) > 0$  for every  $i \in \text{supp}(y)$  and every  $t \in [0, T]$ . Set

$$\varepsilon = \min_{i \in \text{supp}(y)} \min_{t \in [0, T]} \frac{x_i(t)}{y_i}$$

and note that

$$x(t) \geq \varepsilon \cdot y, \quad \forall t \in [0, T]$$

Further, using Fact 2, observe that for every  $t \in [0, T]$  we have

$$\begin{aligned} \|A_B^T p_B(t)\|_\infty &= \|A_B^T L_B(t)^{-1} b_B\|_\infty = \|A_B^T L_B(t)^{-1} \sum_{i \in I} y_i A_i\|_\infty \\ &\leq \sum_{i \in I} y_i \|A_B^T L_B(t)^{-1} A_i\|_\infty \\ &\leq \sum_{i \in I} \frac{x_i(t)}{\varepsilon} \cdot \frac{c_i}{x_i(t)} \cdot M \leq \|c\|_1 \cdot M / \varepsilon. \end{aligned}$$

Let  $N := \|c\|_1 \cdot M / \varepsilon$  and  $N' := \|d\|_\infty \left[ \frac{N}{\min_i \{c_i\}} + 1 \right]$ . Then, for every  $i \in B$  we have

$$\dot{x}_i(t) = d_i (q_i(t) - x_i(t)) = d_i x_i(t) \left( \frac{p_B^T [A_B]_i}{c_i} - 1 \right) \geq -x_i \cdot \|d\|_\infty \left( \frac{N}{c_i} + 1 \right) \geq -x_i \cdot N'.$$

Hence, by Gronwall Lemma we obtain for every  $t \in [0, T]$  and  $i \in B$  that

$$x_i(t) \geq e^{-t \cdot N'} \cdot x_i(0) > 0.$$

□

We use the following standard result from dynamic systems.

**Fact 3.** Let  $G \subseteq \mathbb{R}^m$  be an open set,  $s \in G$  and  $f : G \rightarrow \mathbb{R}^m$  be a  $C^1$  function (continuously differentiable function). Consider the following dynamical system:  $\frac{d}{dt} x(t) = f(x(t))$  with initial condition  $x(0) = s$ . Suppose it satisfies the following conditions for every solution  $x : [0, T) \rightarrow G$  with  $T \in (0, \infty)$ : The limit  $x(T) = \lim_{t \rightarrow T^-} x(t)$  exists and lies in  $G$ . Then, there exists a global solution  $x : [0, \infty) \rightarrow G$ .

We can now prove the existence of a global solution.

**Theorem 4 (Existence of Solution).** For every initial condition  $x(0) \in G^*$ , the non-uniform Physarum Dynamics (3) has a unique solution  $x : [0, \infty) \mapsto G^*$ . The solution satisfies  $\text{supp}(x(t)) = \text{supp}(x(0))$  for all  $t$ .

*Proof.* Let  $B = \text{supp}(x(0))$ . There is a local solution  $x(t)$  in an interval  $[0, \varepsilon)$  for some  $\varepsilon > 0$ . The solution satisfies  $x_i(t) > 0$  for  $i \in B$  and  $x_i(t) = 0$  for  $i \notin B$ . The latter follows from the definition (8) of the dynamics. On  $G_B^*$  the function  $x \mapsto D(q(x) - x)$  used in (8) is defined by a vector of rational functions in  $x$  and hence is continuously differentiable. Also  $G_B^*$  restricted to the coordinates in  $B$  is an open set. Thus Fact 3 is applicable and the existence of a global solution follows from Lemma 2.  $\square$

## 4 The Lyapunov Function

Recall the definition of the Lyapunov function (4). Let  $x^*$  be an optimal solution to (1) with  $I = \text{supp}(x^*)$  and consider

$$V(x) = 2c^T D^{-1}x - \sum_{i \in I} \frac{c_i x_i^*}{d_i} \ln x_i. \quad (9)$$

**Theorem 5 (Lyapunov function).** *Let  $x \in G^*$ . Then*

$$\dot{V}(x) \leq 0.$$

*Moreover,  $\dot{V}(x) = 0$  if and only if  $x$  is an optimal solution to (1).*

*Proof.* Since  $V$  is continuously differentiable,  $\dot{V}(x) = \nabla V \circ D(q(x) - x)$ , where  $\nabla V$  is the gradient of  $V$  (vector of partial derivatives of  $V$  with respect to the  $x_i$ 's) [LaS76, page 30]. An easy computation yields

$$\frac{d}{dt} c^T D^{-1}x(t) = c^T D^{-1} \cdot D[q(t) - x(t)] = c^T q(t) - c^T x(t). \quad (10)$$

and

$$\frac{d}{dt} \sum_{i \in I} \frac{c_i x_i^*}{d_i} \ln x_i(t) = \sum_{i \in I} c_i x_i^* \cdot \left( \frac{q_i(t)}{x_i(t)} - 1 \right) = -c^T x^* + b^T p(t), \quad (11)$$

where the second equality follows by  $r_i(t) = c_i/x_i(t)$  for  $i \in I$ ,  $q(t) = R^{-1}(t)A^T p(t)$ ,  $Ax^* = b$  and

$$\sum_{i \in I} x_i^* r_i(t) q_i(t) = [x^*]^T R(t) q(t) = [x^*]^T A^T p(t) = b^T p(t).$$

By combining (10) and (11) we obtain

$$\dot{V}(x) = 2(c^T q(t) - c^T x(t)) + c^T x^* - b^T p(t). \quad (12)$$

Since  $q(t) = R^{-1}(t)A^T p(t)$ , it holds that

$$[q(t)]^T R(t) q(t) = [q(t)]^T A^T p(t) = b^T p(t),$$

and using the Cauchy Schwarz inequality and the fact that  $\sqrt{a} \cdot \sqrt{b} \leq (a+b)/2$ , we obtain

$$\begin{aligned} c^T q(t) &= [x(t)]^T R(t) q(t) = [R^{1/2}x(t)]^T [R^{1/2}q(t)] \\ &\stackrel{(1)}{\leq} \sqrt{[x(t)]^T R(t) x(t)} \cdot \sqrt{[q(t)]^T R(t) q(t)} \\ &= \sqrt{c^T x(t)} \cdot \sqrt{b^T p(t)} \\ &\stackrel{(2)}{\leq} \frac{c^T x(t) + b^T p(t)}{2}, \end{aligned} \quad (13)$$



and further by combining (12) and (13),

$$\begin{aligned}
\dot{V}(x) &= 2 [c^T q(t) - c^T x(t)] + c^T x^* - b^T p(t) \\
&\leq b^T p(t) - c^T x(t) + c^T x^* - b^T p(t) \\
&= -c^T x(t) + c^T x^* \\
&\stackrel{(3)}{\leq} 0.
\end{aligned}$$

We have  $\dot{V}(x) = 0$  if and only the inequalities (1), (2), and (3) are equalities. (1) is an equality iff  $q(x)$  and  $x$  are parallel, i.e.,  $q(x) = \alpha \cdot x$  for some  $\alpha \geq 0$ . (2) is tight iff

$$[x(t)]^T R(t)x(t) = [q(t)]^T R(t)q(t) = \alpha^2 \cdot [x(t)]^T R(t)x(t),$$

i.e., iff  $\alpha = 1$  and hence  $q(x) = x$ . (3) is tight iff  $c^T x = c^T x^*$ . Finally, if  $q(x) = x$  then  $Ax = Aq(x) = b$ . Thus,  $\dot{V}(x) = 0$  if and only if  $x$  is an optimal solution to (1).  $\square$

**Theorem 6.** *Let  $x(0) \in G^*$ . Then there is an  $\varepsilon > 0$  depending on  $x(0)$ ,  $A$ ,  $b$ ,  $c$  such that  $x_h(t) > \varepsilon$  for all  $h \in I$  and all  $t$ .*

*Proof.* Let  $x^*$  be an optimal solution to (1) with  $\text{supp}(x^*) = I$ . Let  $x_{\max}^* = \max_i x_i^*$ ,  $x_{\min}^* = \min_{i \in I} x_i^*$ ,  $d_{\max} = \max_i d_i$ ,  $d_{\min} = \min_i d_i$ ,  $c_{\max} = \max_i c_i$ ,  $c_{\min} = \min_i c_i$  and  $\delta = \min(1, \min_{i \in I} x_i(0))$ . Since  $\dot{V}(x) \leq 0$  for all  $t$ ,  $V(x(t)) \leq V(x(0))$  for all  $t$ . Then, for any  $h \in I$  we have

$$2c^T D^{-1}x(t) + \frac{c_h}{d_h} \cdot x_h^* \cdot \log \frac{x_h(0)}{x_h(t)} \leq 2c^T D^{-1}x(0) + \sum_{e \in I \setminus \{h\}} \frac{c_e}{d_e} \cdot x_e^* \cdot \log \frac{x_e(t)}{x_e(0)}$$

and hence

$$\begin{aligned}
\log \frac{1}{x_h(t)} &\leq \frac{d_h}{c_h} \cdot \frac{1}{x_h^*} \left( 2c^T D^{-1} [x(0) - x(t)] + \frac{c_h}{d_h} \cdot x_h^* \cdot \log \frac{1}{x_h(0)} + \sum_{e \in I \setminus \{h\}} \frac{c_e}{d_e} \cdot x_e^* \cdot \log \frac{x_e(t)}{x_e(0)} \right) \\
&\leq \frac{d_{\max}}{c_{\min}} \cdot \frac{1}{x_{\min}^*} \left( \frac{2mc_{\max}x_{\max}(0)}{d_{\min}} + \frac{c_{\max}}{d_{\min}} \beta \log \frac{1}{\delta} + \frac{(m-1)c_{\max}}{d_{\min}} \beta \log \left( \frac{\max\{\beta, x_{\max}(0)\}}{\delta} \right) \right) \\
&\leq 4m \cdot \frac{c_{\max}}{c_{\min}} \cdot \frac{d_{\max}}{d_{\min}} \cdot \frac{\max\{\beta, x_{\max}(0)\}}{x_{\min}^*} \cdot \log \left( \frac{\max\{\beta, x_{\max}(0)\}}{\delta} \right).
\end{aligned}$$

for all  $t$ . The upper bound on  $\ln(1/x_h(t))$  does not depend on  $t$ . This proves the claim.  $\square$

**Corollary 1.** *Assume  $x(0) \in G^*$ . The positive limit points of the trajectory  $x(t)$  are contained in  $G^*$ .*

**Lemma 3.** *The right hand side of (8) is continuous.*

*Proof.* Let  $(x^{(n)})$  be a sequence of points in  $G^*$  converging to  $x \in G^*$ . We need to show  $f(x^{(n)}) \rightarrow f(x)$ . For  $i \in \text{supp}(x)$  we must have  $i \in \text{supp}(x^{(n)})$  for all sufficiently large  $n$ . Let  $B$  be any superset of  $\text{supp}(x)$  and consider the subsequence of  $(x^{(n)})$  with  $\text{supp}(x^{(n)}) = B$ . We reuse  $(x^{(n)})$  to denote the subsequence. If the subsequence is finite, there is nothing to show. So assume the subsequence is infinite. We need to show  $f_i(x^{(n)}) \rightarrow f_i(x)$ . The proof proceeds by case distinction.

**Case 1:** For  $i \in \text{supp}(x)$ , we clearly have  $f_i(x^{(n)}) \rightarrow f_i(x)$  for  $n \rightarrow \infty$ , since  $q_i$  is defined by a rational function (Lemma 1).

**Case 2:** For  $i \in B \setminus \text{supp}(x)$ , we need to prove  $f_i(x^{(n)}) \rightarrow 0$ . For this it suffices to show  $q_i(x^{(n)}) \rightarrow 0$ . Let  $x^*$  be an optimal solution to (1) with  $\text{supp}(x^*) = I$ . We may assume that  $(x^{(n)})_i \geq x_i/2$  for all  $i \in I$  and all  $n$ . Let

$$\varepsilon = \min_{i \in I} \frac{(x^{(n)})_i}{x_i^*} \geq \frac{1}{2} \cdot \min_{i \in I} \frac{x_i}{x_i^*} > 0.$$

Hence,  $x^* \leq \varepsilon \cdot (x^{(n)})$  and thus by Fact (2) we have

$$\|A_B^T p_B(t)\|_\infty \leq \sum_{i \in I} x_i^* \|A_B^T L_B(t)^{-1} A_i\|_\infty \leq \|c\|_1 \cdot M/\varepsilon.$$

By the proof of Lemma 2 Part d) and by Lemma 1 it holds that

$$\left| q_i(x^{(n)}) \right| = \left| \frac{(x^{(n)})_i}{c_i} \cdot A_B^T p_b \right| \leq \frac{(x^{(n)})_i}{c_i} \cdot \|c\|_1 \cdot \frac{M}{\varepsilon} = (x^{(n)})_i \cdot O(1).$$

Since  $(x^{(n)})_i \rightarrow x_i = 0$  for all  $i \in [m] \setminus \text{supp}(x)$ , we have  $|q_i(x^{(n)})| \rightarrow 0$  for all  $i \in B \setminus \text{supp}(x)$ .  $\square$

## 5 Putting it Together

We complete the proof of Theorem 2. Let  $x(t)$ ,  $t \in [0, \infty)$  be the global solution of (8) with  $x(0) = x^0 \in G^*$ . Then  $x(t) \in G^*$  for all  $t \in [0, \infty)$  by Theorem 4. Suppose there is a sequence  $t_n$  with  $t_n \rightarrow \infty$  and  $x(t_n) \rightarrow p$  as  $n \rightarrow \infty$ . Then  $p \in G^*$  by Corollary 1. Now  $V(x(t_n)) \rightarrow V(p)$  and  $\dot{V}(x(t_n)) \rightarrow \dot{V}(p)$ . The latter equality holds since  $V(x)$  is  $C^1$  and hence  $\dot{V}(x) = \nabla V \circ f(x)$ , and since  $f$  is continuous by Lemma 3.

However,  $\dot{V}(x(t)) \leq 0$  and  $V(x(t)) \geq V(p)$  for all  $t \in [0, \infty)$  because  $V(x(t))$  is decreasing. So  $\dot{V}(x(t)) \rightarrow 0$  as  $t \rightarrow \infty$ . Hence, by uniqueness of limits  $\dot{V}(p) = 0$ .

Finally  $\dot{V}(p) = 0$  implies that  $p$  is an optimal solution to (1) (Theorem 5).

## 6 Approach to Optimum: A Simple Example

We study the nonuniform dynamics for the simple example of Figure 1 in more detail. We consider “minimize  $c_1 x_1 + c_2 x_2$ ,  $x_1 + x_2 = 1$ ,  $x \geq 0$ , where  $c_2 > c_1$ ” and the Physarum dynamics  $\dot{x}_i = d_i(q_i - x_i)$ ,  $i = 1, 2$ . The unique optimum is  $(1, 0)$ . We ask how the dynamics enters the optimal point.

Assume, we are in the point  $(x_1, x_2)$ . The conductance of edge  $i$  is  $x_i/c_i$ . The conductance of the system of parallel edges is  $x_1/c_1 + x_2/c_2 = (x_1 c_2 + x_2 c_1)/c_1 c_2$ . Therefore the potential difference is  $\Delta = c_1 c_2 / (x_1 c_2 + x_2 c_1)$  and hence with  $N = x_1 c_2 + x_2 c_1$

$$q_i = \frac{x_i}{c_i} \Delta = \frac{x_i c_{3-i}}{x_1 c_2 + x_2 c_1} = \frac{x_i c_{3-i}}{N}$$

and

$$\dot{x}_i = d_i(q_i - x_i) = d_i x_i (c_{3-i}/N - 1) = d_i x_i (c_{3-i} - N)/N.$$

We know that the dynamics converges to the point  $(1, 0)$  and are interested in the behavior near the limit point. Therefore let  $(x_1, x_2) = (1 - \varepsilon_1, \varepsilon_2)$ . Then

$$\begin{aligned} -\dot{\varepsilon}_1 = \dot{x}_1 &= d_1 (1 - \varepsilon_1) \frac{c_2 - c_2(1 - \varepsilon_1) - \varepsilon_2 c_1}{c_2 - c_2 \varepsilon_1 + \varepsilon_2 c_1} \approx d_1 \frac{c_2 \varepsilon_1 - c_1 \varepsilon_2}{c_2} \\ \dot{\varepsilon}_2 = \dot{x}_2 &= d_2 \varepsilon_2 \frac{c_1 - c_2(1 - \varepsilon_1) - c_2 \varepsilon_2}{c_2 - c_2 \varepsilon_1 + \varepsilon_2 c_1} \approx d_2 \varepsilon_2 \frac{c_1 - c_2}{c_2}. \end{aligned}$$

For the approximation, we only kept the terms linear in the epsilons and ignored all higher powers. This is justified since we are interested in the behavior for small  $\varepsilon_1$  and  $\varepsilon_2$ . We continue with the approximations.

From the second equation, we conclude

$$\varepsilon_2(t) = e^{-(c_2-c_1)d_2/c_2 t}.$$

From the first equation, we conclude

$$\dot{\varepsilon}_1(t) = -d_1\varepsilon_1(t) + (d_1c_1/c_2)\varepsilon_2(t) \geq -d_1\varepsilon_1(t).$$

Thus  $\varepsilon_1(t) \geq e^{-d_1 t}$ . If  $d_1 < (c_2 - c_1)d_2/c_2$  or equivalently  $d_2 \geq d_1c_2/(c_2 - c_1)$ , the rate at which  $\varepsilon_2$  goes to zero is higher than the rate for  $\varepsilon_1$  and hence the trajectory converges to the  $x$ -axis and enters the optimal point horizontally.

So assume  $d_1 > (c_2 - c_1)d_2/c_1$ . We try the ‘‘Ansatz’’  $\varepsilon_1(t) = e^{-d_1 t} f(t)$ . Then  $\dot{\varepsilon}_1 = e^{-d_1 t} \dot{f}(t) - d_1 e^{-d_1 t} f(t)$  and hence

$$\begin{aligned} \dot{f}(t) &= e^{d_1 t} (\dot{\varepsilon}_1 + d_1 e^{-d_1 t} f(t)) = e^{d_1 t} \left( -d_1 \varepsilon_1(t) + \frac{d_1 c_1}{c_2} \varepsilon_2(t) + d_1 \varepsilon_1 \right) \\ &= \frac{d_1 c_1}{c_2} e^{\left( d_1 - (c_2 - c_1) \frac{d_2}{c_2} \right) t}. \end{aligned}$$

Thus

$$f(t) = \frac{c_1 d_1}{c_2 d_1 + (c_1 - c_2) d_2} \cdot \left[ e^{\left( d_1 - d_2 \cdot \frac{c_2 - c_1}{c_2} \right) t} - 1 \right] + C$$

and hence

$$\varepsilon_1(t) = \frac{c_1 d_1}{c_2 d_1 - (c_2 - c_1) d_2} \cdot \left[ e^{-\left( d_2 \cdot \frac{c_2 - c_1}{c_2} \right) t} - e^{-d_1 t} \right] + C e^{-d_1 t}.$$

We conclude that  $\varepsilon_1$  and  $\varepsilon_2$  go to zero at the same rate, and the trajectory follows a straight line with slope

$$\tan \phi(t) = -\frac{\varepsilon_2(t)}{\varepsilon_1(t)} \approx \frac{(c_2 - c_1) d_2 - c_2 d_1}{c_1 d_1}.$$

For  $d_1 = (c_2 - c_1)d_2/c_2$ , the analysis is inconclusive. However, since the behavior should be continuous in the  $d$ 's, it is natural to conjecture that the trajectories converge to the  $x$ -axis.

Even less formally, this result can also be obtained as follows. Assume that the trajectory starting in the point  $(1 - \varepsilon_1, \varepsilon_2)$  is essentially straight, we must have (observe that the straight line from  $(1 - \varepsilon_1, \varepsilon_2)$  to the optimal point  $(1, 0)$  has direction  $(\varepsilon_1, -\varepsilon_2)$ )

$$\alpha \varepsilon_1 = d_1 \frac{c_2 \varepsilon_1 - c_1 \varepsilon_2}{c_2} \quad -\alpha \varepsilon_2 = d_2 \varepsilon_2 \frac{c_1 - c_2}{c_2}$$

for some  $\alpha$ . For  $\varepsilon_2 > 0$ , we obtain  $\alpha = d_2(c_2 - c_1)/c_2$  and further

$$d_1 c_1 \cdot \varepsilon_2 = [d_1 c_2 - d_2 (c_2 - c_1)] \cdot \varepsilon_1$$

from the first equation. Thus,

$$\tan \phi(t) = -\frac{\varepsilon_2(t)}{\varepsilon_1(t)} = \frac{(c_2 - c_1) d_2 - c_2 d_1}{d_1 c_1},$$

as above. Since  $\varepsilon_1 > 0$ , we need  $d_1 c_2 > d_2 (c_2 - c_1)$ , i.e.,  $d_1 > (c_2 - c_1)d_2/c_2$ .

Let us specialize to the case  $c_1 = 1, c_2 = 2$ .

- If  $d_2 > c_2 d_1 / (c_2 - c_1) = 2d_1$ , the trajectories enter the optimal point horizontally. Whether a trajectory enters from the left or from the right depends on the initial point. The right plot in Figure 1 shows an example.
- If  $d_2 < 2d_1$ , the trajectories enter the optimal point with slope  $-2 + d_2/d_1$ . In particular, for  $d_1 = d_2 = 1$  (uniform dynamics), the slope is  $-1$ . The left plot in Figure 1 shows an example.

## 7 Acknowledgements

KM wants to thank his colleague Mark Groves for a private lesson on dynamical systems.

## References

- [BBD<sup>+</sup>13] Luca Becchetti, Vincenzo Bonifaci, Michael Dirnberger, Andreas Karrenbauer, and Kurt Mehlhorn. Physarum can compute shortest paths: Convergence proofs and complexity bounds. In *ICALP*, volume 7966 of *LNCS*, pages 472–483, 2013.
- [BBK<sup>+</sup>19] Ruben Becker, Vincenzo Bonifaci, Andreas Karrenbauer, Pavel Kolev, and Kurt Mehlhorn. [Two Results on Slime Mold Computations](#). *Theoretical Computer Science*, 773:79–106, 2019.
- [BMV12] Vincenzo Bonifaci, Kurt Mehlhorn, and Girish Varma. [Physarum can compute shortest paths](#). *Journal of Theoretical Biology*, 309(0):121–133, 2012. A preliminary version of this paper appeared at SODA 2012 (pages 233–240).
- [Bon13] Vincenzo Bonifaci. Physarum can compute shortest paths: A short proof. *Inf. Process. Lett.*, 113(1-2):4–7, 2013.
- [FCP18] E. Facca, F. Cardin, and M. Putti. Physarum dynamics and optimal transport for basis pursuit. *arXiv:1812.11782 [math.NA]*, December 2018.
- [IJNT11] Kentaro Ito, Anders Johansson, Toshiyuki Nakagaki, and Atsushi Tero. Convergence properties for the Physarum solver. *arXiv:1101.5249v1*, January 2011.
- [JZ12] A. Johansson and J. Zou. A slime mold solver for linear programming problems. In *CiE*, pages 344–354, 2012.
- [KKM19] Andreas Karrenbauer, Pavel Kolev, and Kurt Mehlhorn. [Convergence of the Non-Uniform Physarum Dynamics](#). *CoRR*, abs/1901.07231, 2019.
- [LaS76] J. B. LaSalle. *The Stability of Dynamical Systems*. SIAM, 1976.
- [NIU<sup>+</sup>07] T. Nakagaki, M. Iima, T. Ueda, Y. Nishiura, T. Saigusa, A. Tero, R. Kobayashi, and K. Showalter. Minimum-risk path finding by an adaptive amoebal network. *Physical Review Letters (PRL)*, 99(068104):4, 2007.
- [NYT00] T. Nakagaki, H. Yamada, and Á. Tóth. Maze-solving by an amoeboid organism. *Nature*, 407:470, 2000.

- [SV16a] Damian Straszak and Nisheeth K. Vishnoi. Natural algorithms for flow problems. In *SODA*, pages 1868–1883, 2016.
- [SV16b] Damian Straszak and Nisheeth K. Vishnoi. On a natural dynamics for linear programming. In *ITCS*, pages 291–291, New York, NY, USA, 2016. ACM.
- [TKN07] A. Tero, R. Kobayashi, and T. Nakagaki. A mathematical model for adaptive transport network in path finding by true slime mold. *Journal of Theoretical Biology*, pages 553–564, 2007.
- [Vid] <http://people.mpi-inf.mpg.de/~mehlhorn/ftp/SlimeAusschnitt.webm>

This figure "Figure2PRL.png" is available in "png" format from:

<http://arxiv.org/ps/1906.07781v1>