



AMS

American Meteorological Society

Supplemental Material

[© Copyright 2020 American Meteorological Society](#)

Permission to use figures, tables, and brief excerpts from this work in scientific and educational works is hereby granted provided that the source is acknowledged. Any use of material in this work that is determined to be “fair use” under Section 107 of the U.S. Copyright Act or that satisfies the conditions specified in Section 108 of the U.S. Copyright Act (17 USC §108) does not require the AMS’s permission. Republication, systematic reproduction, posting in electronic form, such as on a website or in a searchable database, or other uses of this material, except as exempted by the above statement, requires written permission or a license from the AMS. All AMS journals and monograph publications are registered with the Copyright Clearance Center (<http://www.copyright.com>). Questions about permission to use materials for which AMS holds the copyright can also be directed to permissions@ametsoc.org. Additional details are provided in the AMS Copyright Policy statement, available on the AMS website (<http://www.ametsoc.org/CopyrightInformation>).

Supplementary material for manuscript: "Simulated Tropical Precipitation Assessed Across Three Major Phases of the Coupled Model Intercomparison Project (CMIP)"

Fiedler et al., submitted to Monthly Weather Review

Date of submission: December 18, 2019

1 Content

We include the following supplementary information:

- an analysis of the observational uncertainty across the four data sets (Section 2), shown in Fig. S1.
- an assessment of large-scale precipitation differences in tandem with SST differences (Section 3), illustrated in Fig. S2 and S3.
- the contributions from land and ocean to our assessment of wet and dry frequency in the tropics (Fig. S4-S5)
- frequency distributions of tropical precipitation to illustrate the CMIP model spread (Fig. S6)
- maps with the regional masks applied for calculating the monsoon metrics (Fig. S7)
- data tables detailing the models used in this study (Tab. 1-5)
- definition of the SPI classes (Tab. 6)

2 Observational uncertainty

We illustrate the uncertainty in precipitation observations used as reference for our CMIP inter-comparison. For the four observational datasets, this uncertainty is due to regional differences in the rain gauge density [72], interpolation methods, satellite retrieval algorithms, and spatio-temporal resolution [122]. For each gridbox, we define the observational uncertainty for the period 2000–2014 as the range between the mean precipitation for the observational dataset with the highest value subtracted by the dataset with the lowest value (see Fig. S1). The observational differences are given relative to the mean of the four datasets. We find the largest ranges over islands, luv of mountain ranges, and coastal areas (Fig S1a).

Overall, the strongest uncertainty rarely exceeds 5 mm day^{-1} . During DJF, we find strongest disagreement in Central Africa with up to 6 mm day^{-1} (CMORPH high bias), over the Pacific Warm pool (CMORPH dry bias) as well as the Caribbean (CRU wet bias; Fig. S1b). During JJA, we find a remarkably higher uncertainty compared to DJF of 10 mm day^{-1} and more. Strongest disagreement among the datasets we find at the West coasts of India and Malay Peninsula during Monsoon (CMORPH dry bias; Fig. S1c). Somewhat smaller ranges are found in the Sahel (CMORPH wet bias), over the

Amazon rain forest (CMORPH dry bias), and in the Pacific Warm pool region. This means, CMORPH disagrees the most with the other three datasets, driving the observational uncertainty with dry biases over India [89,98,123], South East Asia [75,125] and the area from Caribbean to Central America, and a wet bias over Central Africa [14,42].

Without CMORPH, the mean observational uncertainty would reduce from 0.85 to 0.46 mm day^{-1} (land: 0.96 to 0.38 mm day^{-1}). CRU for which less comparison studies exist agrees fairly well with the gauge-based dataset of the Global Precipitation Climatology Centre (GPCC) [109] over West Africa [3] and elsewhere [53]. However, patches of strong differences over individual islands vanish when only considering satellite data (Fig. S1d). These signals should not be given too much attention as these island measurements in CRU are based on few gauges that are not representative for larger areas [72]. Over land, TRMM and IMERG are almost identical, while over ocean, they differ by up to 1 mm day^{-1} , averaged over the study period. In general, the range of the four observational datasets remains below 2 mm day^{-1} in most tropical regions, while a markedly higher range mainly occurs during summer in the Monsoon regions.

3 SST pattern versus precipitation

The large scale precipitation biases can be caused dynamically through changes in the Walker circulation and can be driven by SSTs. Here, we test the hypothesis that the reduction in precipitation biases occurs in tandem with a reduction in large scale SST biases. The tropical mean SST is known to be biased low in most and high in some models, which has been attributed to a bias in cloud cover [77]. We find that both, the precipitation (Section 3.a.1) and SSTs in the tropical mean show a tighter range in CMIP6 than in CMIP5 and CMIP3. While the mean bias across all models does reduce somewhat in CMIP5 and CMIP6 compared to CMIP3, CMIP6 shows fewer models with strong positive and neg-

ative biases in precipitation and SSTs. However, there is no indication that the tropical mean in the two quantities are related in an obvious way (Fig. S2a).

The second large scale bias in tropical SSTs is the "cold tongue" in the Pacific Ocean [140], which is caused by the erroneous representation of the thermocline depth. The "cold tongue" region is indicated in Fig. S3. Fig. S2 shows that most models have a too cool cold tongue and a too wet tropical Pacific. While the cold tongue bias is substantially reduced in CMIP6 compared to CMIP3, the precipitation bias over the Tropical Pacific does not (Fig. S2b).

A Data Tables

Table 1: Model data used from CMIP3. All data is available as monthly means for 1900–2000. Temporally higher resolved data is marked with ⁽¹⁾ for 3-hourly precipitation data in 1991–2000, ⁽²⁾ for daily precipitation data in 1961–2000, and ⁽³⁾ for daily outgoing longwave radiation data, the latter two both in 1961–2000. Note that availability for other variables may differ. See Tab. 5 for institution acronyms.

Model	Institution	Spatial resolution	References
bccr_bcm2_0 ^{2,3}	BCCR/UIB NERSC/GFI	128×64	[101]
cccma_cgcm3_1 ^{2,3}	CCCma	96×48	[101]
cccma_cgcm3_1_t63 ^{2,3}	CCCma	128×64	[101]
cnrm_cm3 ^{1,2,3}	CNRS	128×64	[107]
csiro_mk3_0 ^{2,3}	CSIRO	192×96	[49]
csiro_mk3_5 ^{2,3}	CSIRO	192×96	[49]
gfdl_cm2_0 ^{1,2,3}	GFDL	144×90	[25]
gfdl_cm2_1 ^{1,2,3}	GFDL	144×90	[25]
giss_aom ²	GISS	90×60	[101]
giss_model_e_h	GISS	72×46	[101]
giss_model_e_r	GISS	72×46	[101]
iap_fggoals1_0_g ^{2,3}	IAP	128×60	[146, 147]
ingv_echam4 ^{2,3}	INGV	320×160	[101]
inmcm3_0 ^{1,2}	INM	72×45	[27]
ipsl_cm4 ^{2,3}	IPSL	96×72	[84]
miroc_3_2_medres ^{1,2,3}	CCSR/NIES FRCGC	128×64	[71]
miroc3_2_hires ^{1,2,3}	CCSR/NIES FRCGC	320×160	[71]
miub_echo_g ^{2,3}	MIUB	96×48	[104] [76] [88]
mpi_echam5 ^{2,3}	MPI-M	192×96	[105]
mri_cgcm2_3_2a ^{1,2,3}	MRI	128×64	[152]
ncar_ccsm3_0	NCAR	256×128	[22]
ncar_pcm1	NCAR	128×64	[137]
ukmo_hadcm3 ²	UKMO	96×73	[48, 66] [38]
ukmo_hadgem1	UKMO	192×145	[67, 85]

Table 2: Model data used from CMIP5. Monthly means are available for 1900–2000 from all models except MIROC4h and CanCM4. The availability of temporally higher-resolved data is indicated as in Tab. 1. See Tab. 5 for institution acronyms.

Model	Institution	Spatial resolution	References
ACCESS1-0 ^{1,2,3}	CSIRO-BOM	192×144	[10, 11]
ACCESS1-3 ^{1,2,3}	CSIRO-BOM	192×144	[10, 12]
BNU-ESM ^{2,3}	BNU	128×64	[64, 65]
CCSM4 ^{1,2}	NCAR	288×192	[43, 87]
CESM1-BGC ²	NCAR	288×192	[79, 80]
CESM1-CAM5 ²	NCAR	288×192	[40, 94]
CESM1-CAM5-1-FV2	NCAR	144×96	[40, 95]
CESM1-WACCM	NCAR	144×96	[82, 83]
CESM1-FASTCHEM ²	NCAR	288×192	[40, 74]
CMCC-CESM ^{2,3}	CMCC	96×48	[19, 131]
CMCC-CM ^{1,2,3}	CMCC	480×240	[111]
CMCC-CMS ^{2,3}	CMCC	192×96	[110]
CNRM-CM5 ^{1,2,3}	CNRM-CERFACS	256×128	[133]
			[116]
CNRM-CM5-2	CNRM-CERFACS	256×128	[133]
			[117]
CSIRO-Mk3-6-0 ^{2,3}	CSIRO-QCCCE	192×96	[62, 63]
CanCM4 ²	CCCma	128×64	[16, 40]
CanESM2 ^{2,3}	CCCma	128×64	[17, 40]
EC-EARTH ^{1,2,3}	EC-Earth	320×160	[54]
			[37]
FGOALS-g2 ^{1,2,3}	IAP	128×60	[59, 78]
FGOALS-s2	IAP	128×108	[6]
FIO-ESM	FIO	128×64	[100]
			[99]

Table 3: Tab. 2 for CMIP5 data continued.

Model	Institution	Spatial resolution	References
GFDL-CM2p1	GFDL	144×90	[25] [33]
GFDL-CM3 ^{1,2,3}	GFDL	144×90	[28, 50] [57]
GFDL-ESM2G ^{1,2,3}	GFDL	144×90	[32, 34] [30]
GFDL-ESM2M ^{1,2,3}	GFDL	144×90	[32, 34] [31]
GISS-E2-H-CC	GISS	144×90	[40, 90]
GISS-E2-R-CC	GISS	144×90	[40, 91]
HadCM3 ²	MOHC	96×73	[21] [118–120]
HadGEM2-CC ^{2,3}	MOHC	192×145	[52, 68]
HadGEM2-ES ^{1,2,3}	MOHC	192×145	[68, 69]
IPSL-CM5A-LR ^{1,2,3}	IPSL	96×96	[29] [26]
IPSL-CM5A-MR ^{1,2,3}	IPSL	144×143	[29] [41]
IPSL-CM5B-LR ^{2,3}	IPSL	96×96	[29] [39]
MIROC-ESM ^{1,2,3}	JAMSTEC, AORI, NIES	128×64	[139] [61]
MIROC-ESM-CHEM ^{1,2,3}	JAMSTEC, AORI, NIES	128×64	[139] [60]
MIROC4h ^{1,2,3}	AORI, NIES, JAMSTEC	640×320	[106] [4]
MIROC5 ^{1,2,3}	AORI, NIES, JAMSTEC	256×128	[138] [5]
MPI-ESM-LR ^{2,3}	MPI-M	192×96	[45, 47]
MPI-ESM-MR ^{2,3}	MPI-M	192×96	[46, 47]
MPI-ESM-P ^{2,3}	MPI-M	192×96	[47, 70]
MRI-CGCM3 ^{1,2,3}	MRI	320×160	[148, 149]
MRI-ESM1 ^{1,2,3}	MRI	320×160	[1, 2]
NorESM1-M ^{1,2,3}	NCC	144×96	[9, 81]
NorESM1-ME	NCC	144×96	[129, 130]
bcc-csm1-1 ^{1,2,3}	BCC	128×64	[143, 145]
bcc-csm1-1-m ^{1,2,3}	BCC	320×160	[143, 144]
inmcm4 ^{1,2,3}	INM	180×120	[135] [136]

Table 4: Model data used from CMIP6. Precipitation data is available as monthly means for the time period 1900–2014 for all models except AWI-CM-1-1-MR, EC-Earth3-Veg and NESM3. Temporally higher-resolved data is not available for all models and availability is indicated as in Tab. 1. See Tab. 5 for institution acronyms.

Model	Institution	Spatial resolution	References
AWI-CM-1-1-MR ¹	AWI	384×192	[115]
BCC-CSM2-MR ^{1,2,3}	BCC	320×160	[7, 141]
BCC-ESM1 ^{2,3}	BCC	128×64	[8, 142]
CanESM5 ^{2,3}	CCCma	128×64	[18, 124]
CESM2	NCAR	288×192	[44]
CESM2-WACCM ^{2,3}	NCAR	288×192	[24]
CNRM-CM-6-1 ^{1,2,3}	CNRM-CERFACS	256×128	[132, 134]
CNRM-ESM2-1 ^{1,2,3}	CNRM-CERFACS	256×128	[112, 113]
EC-Earth3-Veg ^{1,2,3}	EC-Earth	512×256	[36]
EC-Earth3 ^{1,2,3}	EC-Earth	512×256	[35]
GFDL-CM4 ^{1,2,3}	GFDL	360×180	[51, 55]
GISS-E2-1-G ^{1,3}	GISS	144×90	[92, 108]
GISS-E2-1-H	GISS	144×90	[93, 108]
HadGEM3-GC31-LL ^{2,3}	MOHC	192×144	[73, 103]
IPSL-CM6A-LR ^{1,2,3}	IPSL	144×143	[13]
MIROC6	JAMSTEC, AORI, NIES, R-CCS	256×128	[127]
MPI-ESM-LR ^{1,2,3}	MPI-M	192×96	[128]
MRI-ESM2-0 ^{1,2,3}	MRI	320×160	[86]
NESM3 ¹	NUIST	192×96	[150]
SAM0-UNICON ^{1,2,3}	SNU	288×192	[151]
UKESM1-0-LL	MOHC	192×96	[15, 96]
			[97, 121]
			[114, 126]

Table 5: Acronyms of modeling centers providing the datasets listed in Tab. 1 - 4.

Acronym	Modeling Center
AORI	Atmosphere and Ocean Research Institute, The University of Tokyo, Japan
AWI	Alfred Wegener Institute, Germany
BCC	Beijing Climate Center, China
BCCR	Bjerknes Center for Climate Research, Norway
BNU	Beijing Normal University, China
CCCma	Canadian Center for Climate Modeling and Analysis, Canada
CCSR	Center for Climate System Research, Tokyo, Japan
CMCC	Centro Euro-Mediterraneo sui Cambiamenti Climatici, Italy
CNRM	Centre National de Recherches Meteorologiques, France
CNRM-CERFACS	CNRM and Centre Europeen de Recherches et de Formation Avancee en Calcul Scientifique, France
CSIRO	Commonwealth Scientific and Industrial Research Organisation Atmospheric Research, Australia
CSIRO-BOM	CSIRO and Bureau of Meteorology, Australia
CSIRO-QCCCE	CSIRO and Queensland Climate Change Centre of Excellence, Australia
EC-Earth	EC-Earth Consortium
FIO	First Institute of Oceanography, China
FRCGC	Frontier Research Center for Global Change, Kanagawa, Japan
GFDL	Geophysical Fluid Dynamics Laboratory, USA
GFI	Geophysical Institute, University of Bergen, Norway
GISS	NASA/Goddard Institute for Space Studies, USA
IAP	Institute for Atmospheric Physics, China
INGV	National Institute of Geophysics and Volcanology, Italy
INM	Institute of Numerical Mathematics, Russia
IPSL	Institute Pierre Simon Laplace, France
JAMSTEC	Japan Agency for Marine-Earth Science and Technology, Japan
MIUB	University of Bonn, Germany
MOHC	Met Office Hadley Centre, UK
MPI-M	Max Planck Institute for Meteorology, Germany
MRI	Meteorological Research Institute, Japan
NCAR	National Center for Atmospheric Research, USA
NCC	Norwegian Climate Center, Norway
NERSC	Nansen Environmental and Remote Sensing Center, Norway
NIES	National Institute for Environmental Studies, Ibaraki, Japan
NIES	National Institute for Environmental Studies, Japan
NUIST	Nanjing University of Information Science and Technology, China
R-CCS	RIKEN Center for Computational Science, Japan
SNU	Seoul National University, Republic of Korea
UIB	University of Bergen, Norway
UKMO	Met Office, United Kingdom

Table 6: Mathematical definition of the occurrence probabilities (P), criteria, and classification for the Standardized Precipitation Index (SPI).

Criterion	SPI class	P [%]
$SPI \geq 2$	W3: extremely wet	2.3
$2 > SPI \geq 1.5$	W2: severely wet	4.4
$1.5 > SPI \geq 1$	W1: moderately wet	9.2
$1 > SPI > -1$	N0: normal	68.2
$-1 \geq SPI > -1.5$	D1: moderately dry	9.2
$-1.5 \geq SPI > -2$	D2: severely dry	4.4
$SPI \leq -2$	D3: extremely dry	2.3

B Figure gallery

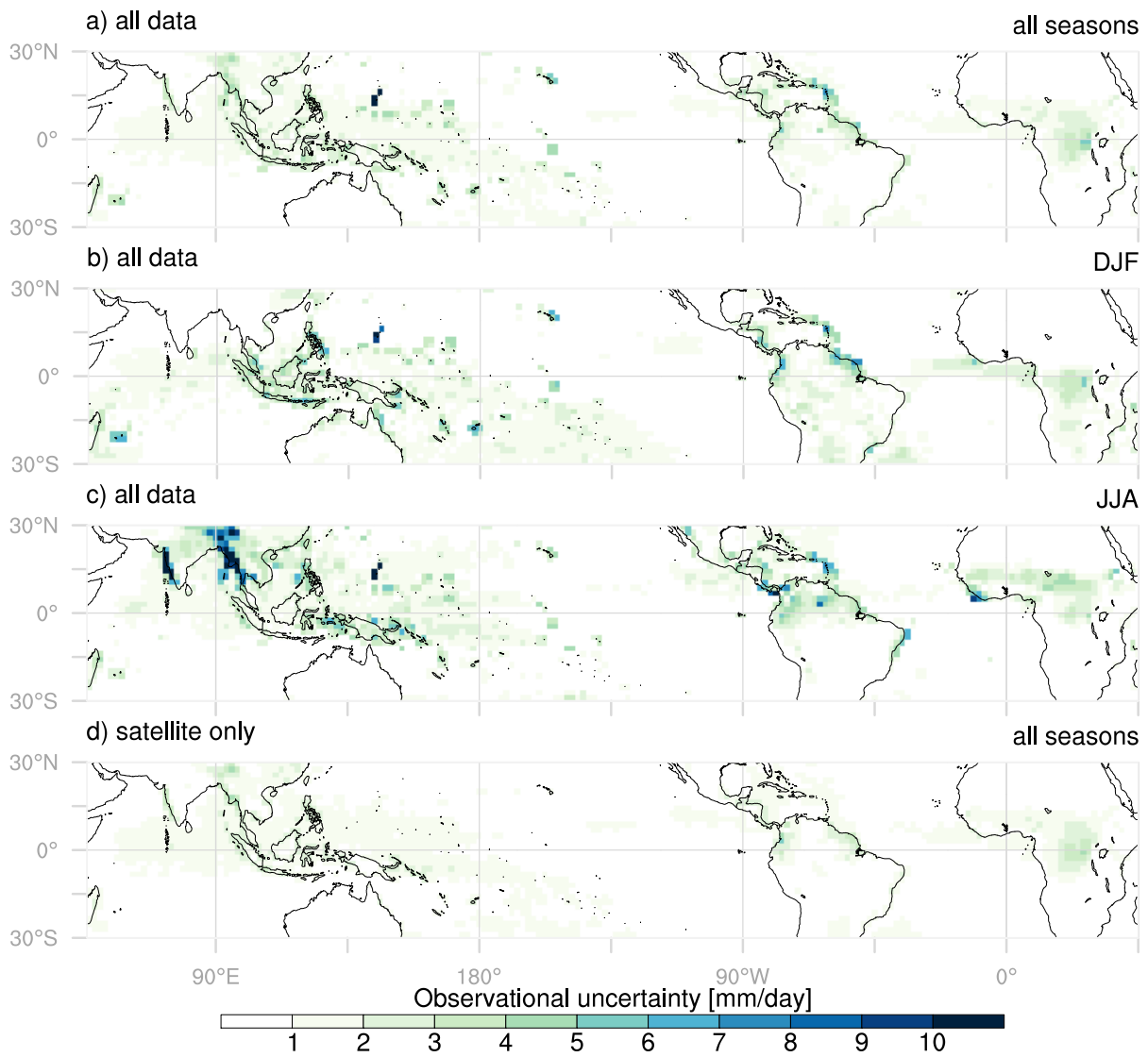


Figure S1: The observational uncertainty is shown as the range in long-term mean precipitation of (a-c) TRMM 3B42, CMORPH, IMERG and CRU and for (d) TRMM 3B42, CMORPH and IMERG for every grid box (T63). The calculation is based on monthly precipitation rates for 2000–2014 over (a,d) all seasons, (b) DJF and (c) JJA. The tropical mean range for a) is 0.85 (land: 0.95; ocean: 0.82) mm day⁻¹.

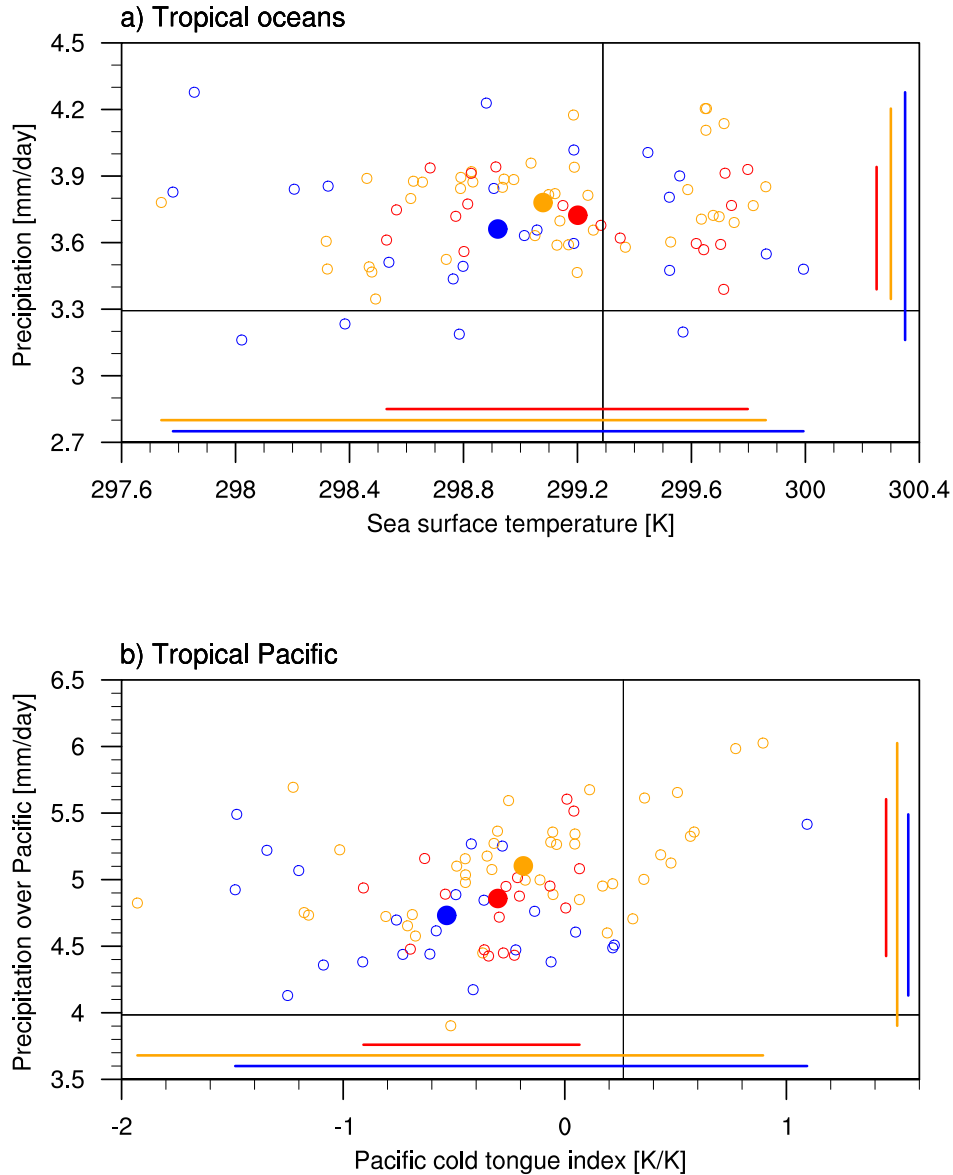


Figure S2: Precipitation versus SST differences. Shown are the (a) precipitation over the tropical oceans against sea surface temperatures, and (b) precipitation over the tropical Pacific against the Pacific cold tongue index following [140], using surface temperature averages for 180°W – 140°W and 3°S – 3°N minus 150°E – 110°W and 20°S – 20°N , depicted in Figure S3. Open circles mark 23 CMIP3 (blue), 43 CMIP5 (orange), 18 CMIP6 (red) model ensemble averages for 1980–1999, with their range depicted as colored lines. The black lines are the observed SST mean for 1980–1999 in HadISST [102], and the observed precipitation mean for 2000–2014 in TRMM. We show 1980–1999 because this is the period with the largest overlap of HadISST and the CMIP generations. The precipitation of CMIP6 2000–2014 is close to that time frame so we do not show it here.

SST biases in CMIP6

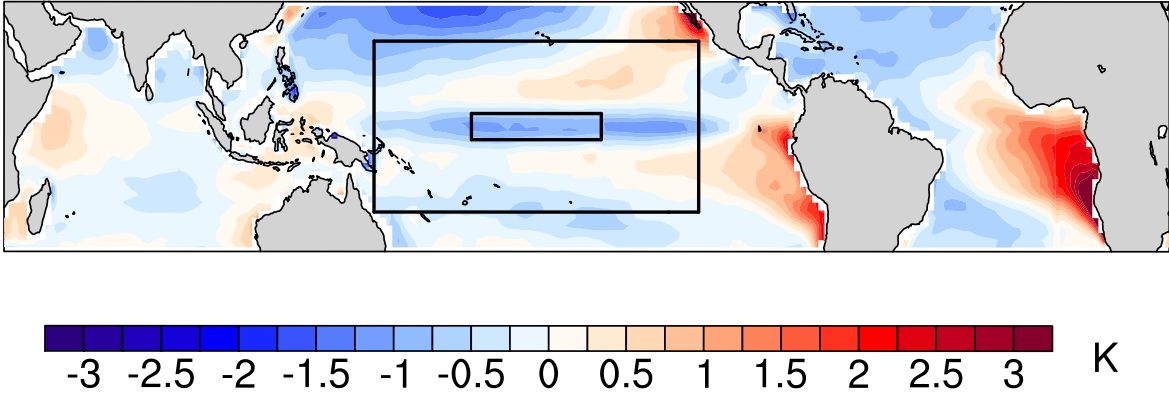


Figure S3: SST bias in CMIP6 models computed as the difference between the multimodel mean (equivalent to red dot in Fig. S2a) minus the observational product HadISST (equivalent to vertical line in Fig. S2a), both averaged over 1980–1999, again as in Fig. S2. The boxes used to define the cold-tongue index in Fig. S2b are indicated in black. Note that there is observational uncertainty for the SSTs at the order of 0.02 K in the tropical mean among the datasets HadISST [102] (used here), COBE SST2 [56], and ERSSTv5 [58] (not shown).

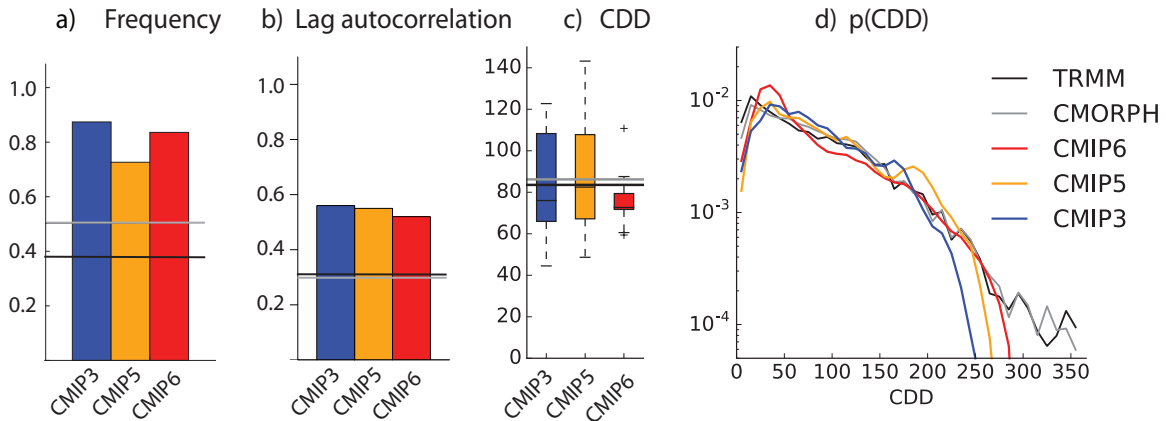


Figure S4: Wet and dry periods over land. Shown are: (a) The frequency of wet hours calculated by flattening three-hourly CMIP data and observations in time and space into a single dimension and counting the number of precipitation events; (b) the 1-day lag auto-correlation of total daily precipitation, temporally and spatially averaged for CMIP and observations, (c-d) the number of consecutive dry days (CDD) as (c) box plot for the time and spatial average from CMIP and observations plotted as horizontal lines, and (d) the probability of occurrence across time and space. All values are for the tropics (30°N–30°S) and from 1961–2000 for the models and from 2000–2014 for the observations.

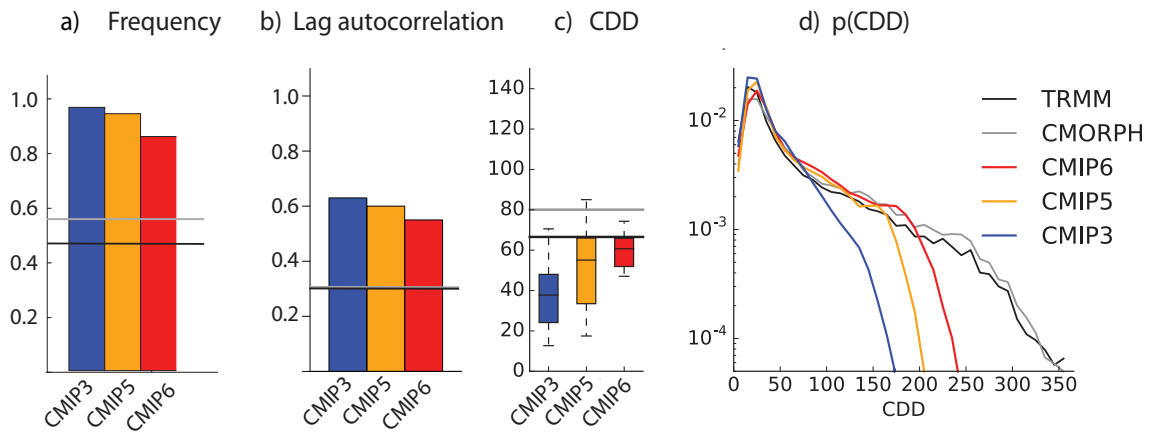


Figure S5: as Figure S4, but for ocean.

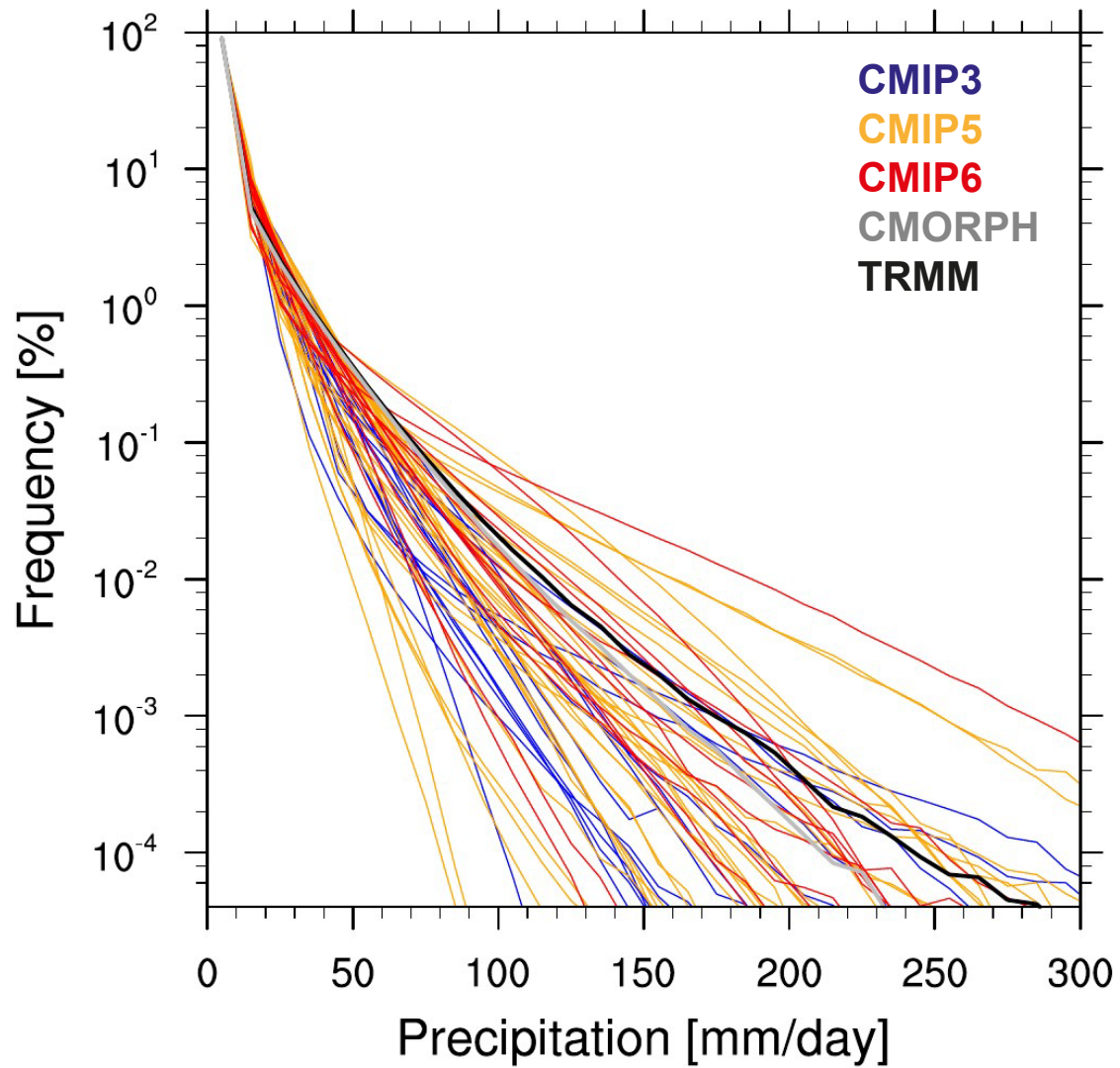


Figure S6: Probability density functions for individual models, TRMM, and CMORPH, of daily precipitation amounts. Most models in CMIP5 and CMIP6, and almost all in CMIP3 underestimate the frequency of the largest observed precipitation amounts with up to 290 mm day^{-1} . Only few models overestimate the frequency of the largest precipitation amounts and produce too large precipitation amounts.

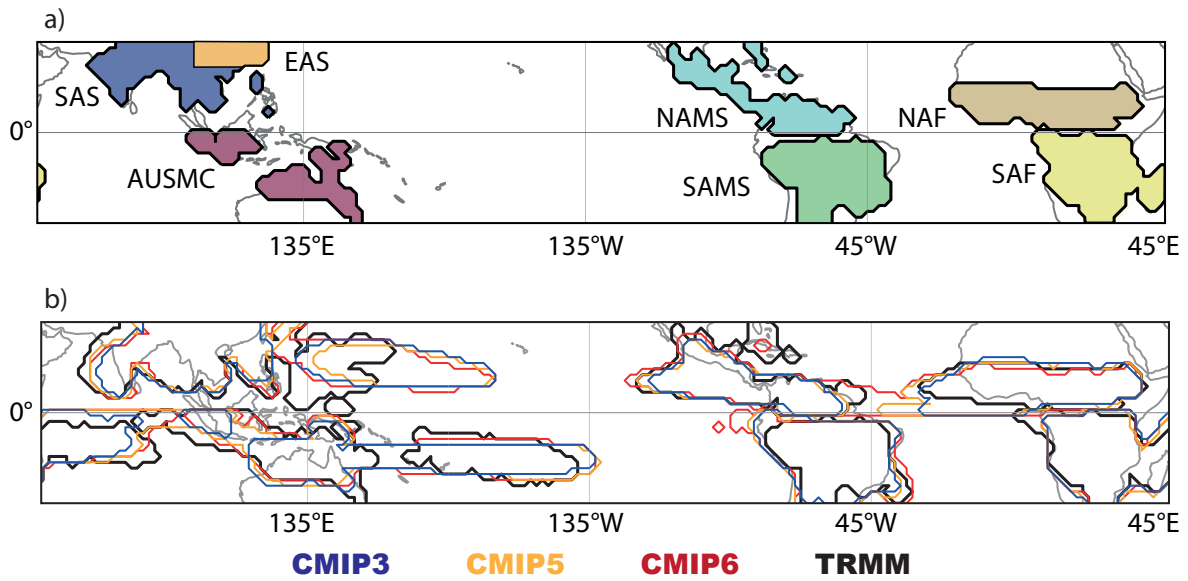


Figure S7: Monsoon precipitation domains. Shown are (a) the land-only monsoon domains calculated from TRMM data, and (b) the mean monsoon areas calculated from CMIP3 (blue), CMIP5 (orange) and CMIP6 (red) for 1900–1999 and TRMM (black) for 2000–2014. In (a) the equator separates the northern monsoon domains (North America Monsoon System (NAMS), North Africa (NAF), Southern Asia (SAS) and East Asian summer (EAS)) from the southern monsoon domains (South America Monsoon System (SAMS), South Africa (SAF), and Australian-Maritime Continent (AUSMC)), 60°E separates NAF from SAS, and 20°N and 100°E separates SAS from EAS.

References

- [1] Yukimasa Adachi, Seiji Yukimoto, Makoto Deushi, Atsushi Obata, Hideyuki Nakano, Taichu Tanaka, Masahiro Hosaka, Tomonori Sakami, Hiromasa Yoshimura, Mikitoshi Hirabara, Eiki Shindo, Hiroyuki Tsujino, Ryo Mizuta, Shoukichi Yabu, Tsuyoshi Koshiro, Tomoaki Ose, and Akio Kitoh. MRI-ESM1 model output prepared for CMIP5 historical, served by ESGF, 2015.
- [2] Yukimasa Adachi, Seiji Yukimoto, Makoto Deushi, Atsushi Obata, Hideyuki Nakano, Taichu. Y. Tanaka, Masahiro Hosaka, Tomonori Sakami, Hiromasa Yoshimura, Mikitoshi Hirabara, Eiki Shindo, Hiroyuki Tsujino, Ryo Mizuta, Shoukichi Yabu, Tsuyoshi Koshiro, Tomoaki Ose, and Akio Kitoh. Basic performance of a new earth system model of the Meteorological Research Institute (MRI-ESM1). *Papers in Meteorology and Geophysics*, 64:1–19, 2013.
- [3] A. A. Akinsanola, K. O. Ogunjobi, V. O. Ajayi, E. A. Adefisan, J. A. Omotosho, and S. Sanogo. Comparison of five gridded precipitation products at climatological scales over West Africa. *Meteorology and Atmospheric Physics*, 129(6):669–689, Dec 2017.
- [4] AORI, NIES, JAMSTEC. MIROC4h model output prepared for CMIP5 historical, served by ESGF, 2015.
- [5] AORI, NIES, JAMSTEC. MIROC5 model output prepared for CMIP5 historical, served by ESGF, 2015.
- [6] Qing Bao, Pengfei Lin, Tianjun Zhou, Yimin Liu, Yongqiang Yu, Guoxiong Wu, Bian He, Jie He, Lijuan Li, Jiandong Li, Yangchun Li, Hailong Liu, Fangli Qiao, Zhenya Song, Bin Wang, Jun Wang, Pengfei Wang, Xiaocong Wang, Zaizhi Wang, Bo Wu, Tongwen Wu, Yongfu Xu, Haiyang Yu, Wei Zhao, Weipeng Zheng, and Linjiong Zhou. The flexible global ocean-atmosphere-land system model, spectral version 2: Fgoals-s2. *Advances in Atmospheric Sciences*, 30(3):561–576, 2013.
- [7] BCC. BCC BCC-CSM2MR model output prepared for CMIP6 CMIP historical, 2018. Version 20190108.
- [8] BCC. BCC BCC-ESM1 model output prepared for CMIP6 CMIP historical, 2018. Version 20181220.
- [9] M. Bentsen, I. Bethke, J. B. Debernard, T. Iversen, A. Kirkevåg, Ø. Seland, H. Drange, C. Roelandt, I. A. Seierstad, C. Hoose, and J. E. Kristjánsson. The Norwegian Earth System Model, NorESM1-M Part 1: Description and basic evaluation of the physical climate. *Geoscientific Model Development*, 6(3):687–720, 2013.
- [10] D. Bi, M. Dix, S. Marsland, S. O’Farrell, H. Rashid, P. Uotila, A. Hirst, E. Kowalczyk, M. Golebiewski, A. Sullivan, H. Yan, N. Hannah, C. Franklin, Z. Sun, P. Vohralik, I. Watterson, X. Zhou, R. Fiedler, M. Collier, Y. Ma, J. Noonan, L. Stevens, P. Uhe, H. Zhu, S. Griffies, R. Hill, C. Harris, and K. Puri. The ACCESS coupled model: description, control climate and evaluation. *Aust. Met. Oceanogr. J.*, 63:41–64, 2013.
- [11] Dave Bi, Martin Dix, Simon Marsland, Siobhan O’Farrell, Petteri Uotila, Tony Hirst, Eva Kowalczyk, Harun Rashid, Zhian Sun, Mark Collier, Katja Dommenges, Maciej Golebiewski, Nicholas Hannah, Russell Fiedler, Charmaine Franklin, Sophie Lewis, Yimin Ma, Paola Petrelli, Lauren Stevens, Arnold Sullivan, Peter Uhe, Peter Vohralik, Ian Watterson, Hailin Yan, and Xiaobing Zhou. ACCESS1-0 model output prepared for CMIP5 historical (Version 2015), served by ESGF, 2016.
- [12] Dave Bi, Martin Dix, Simon Marsland, Siobhan O’Farrell, Petteri Uotila, Tony Hirst, Eva Kowalczyk, Harun Rashid, Zhian Sun, Mark Collier, Katja Dommenges, Maciej Golebiewski, Nicholas Hannah, Russell Fiedler, Charmaine Franklin, Sophie Lewis, Yimin Ma, Paola Petrelli, Lauren Stevens, Arnold Sullivan, Peter Uhe, Peter Vohralik, Ian Watterson, Hailin Yan, and Xiaobing

- Zhou. ACCESS1-3 model output prepared for CMIP5 historical (Version 2015), served by ESGF, 2016.
- [13] Olivier Boucher, Sébastien Denvil, Arnaud Caubel, and Marie Alice Foujols. IPSL IPSL-CM6A-LR model output prepared for CMIP6 CMIP historical, 2018. Version 20180803.
- [14] Pierre Camberlin, Geoffrey Barraud, Sylvain Bigot, Olivier Dewitte, Fils Makanzu Imwangana, Jean-Claude Maki Mateso, Nadège Martiny, Elise Monsieurs, Vincent Moron, Thierry Pellarin, Nathalie Philippon, Muhindo Sahani, and Gaston Samba. Evaluation of remotely sensed rainfall products over central africa. *Quarterly Journal of the Royal Meteorological Society*, 145(722):2115–2138, May 2019.
- [15] J. Cao, B. Wang, Y.-M. Yang, L. Ma, J. Li, B. Sun, Y. Bao, J. He, X. Zhou, and L. Wu. The NUIST Earth System Model (NESM) version 3: description and preliminary evaluation, journal = Geoscientific Model Development. 11(7):2975–2993, 2018.
- [16] CCCma. CanCM4 model output prepared for CMIP5 historical, served by ESGF, 2015.
- [17] CCCma. CanESM2 model output prepared for CMIP5 historical, served by ESGF, 2015.
- [18] CCCma. Ccma canesm5 model output prepared for cmip6 cmip historical, 2018. Version 20190429.
- [19] CMCC. CMCC-CESM model output prepared for CMIP5 historical, served by ESGF, 2013.
- [20] CMCC. Cmcc-cms model output prepared for cmip5 historical, served by esgf, 2013.
- [21] M. Collins, S. F. B. Tett, and C. Cooper. The internal climate variability of hadcm3, a version of the hadley centre coupled model without flux adjustments. *Climate Dynamics*, 17(1):61–81, 2001.
- [22] William D. Collins, Cecilia M. Bitz, Maurice L. Blackmon, Gordon B. Bonan, Christopher S. Bretherton, James A. Carton, Ping Chang, Scott C. Doney, James J. Hack, Thomas B. Henderson, Jeffrey T. Kiehl, William G. Large, Daniel S. McKenna, Benjamin D. Santer, and Richard D. Smith. The Community Climate System Model Version 3 (CCSM3). *Journal of Climate*, 19(11):2122–2143, 2006.
- [23] Gokhan Danabasoglu. NCAR CESM2-WACCM model output prepared for CMIP6 CMIP historical, 2019. Version 20190415.
- [24] Gokhan Danabasoglu, David Lawrence, Keith Lindsay, William Lipscomb, and Gary Strand. NCAR CESM2 model output prepared for CMIP6 CMIP historical, 2019. Version 20190401.
- [25] Thomas L. Delworth, Anthony J. Broccoli, Anthony Rosati, Ronald J. Stouffer, V. Balaji, John A. Beesley, William F. Cooke, Keith W. Dixon, John Dunne, K. A. Dunne, Jeffrey W. Durachta, Kirsten L. Findell, Paul Ginoux, Anand Gnanadesikan, C. T. Gordon, Stephen M. Griffies, Rich Gudgel, Matthew J. Harrison, Isaac M. Held, Richard S. Hemler, Larry W. Horowitz, Stephen A. Klein, Thomas R. Knutson, Paul J. Kushner, Amy R. Langenhorst, Hyun-Chul Lee, Shian-Jiann Lin, Jian Lu, Sergey L. Malyshev, P. C. D. Milly, V. Ramaswamy, Joellen Russell, M. Daniel Schwarzkopf, Elena Shevliakova, Joseph J. Sirutis, Michael J. Spelman, William F. Stern, Michael Winton, Andrew T. Wittenberg, Bruce Wyman, Fanrong Zeng, and Rong Zhang. GFDL’s CM2 Global Coupled Climate Models. Part I: Formulation and Simulation Characteristics. *Journal of Climate*, 19(5):643–674, 2006.
- [26] Sébastien Denvil, Marie Alice Foujols, Arnaud Caubel, Olivier Marti, Jean-Louis Dufresne, Laurent Bopp, Patricia Cadule, Christian Ethé, Abderrahmane Idelkadi, Martial Mancip, Sébastien Masson, Juliette Mignot, Musat Ionela, Yves Balkanski, Slimane Bekki, Sandrine Bony, Pascale Braconnot, Patrick Brockman, Francis Codron, Anne Cozic, David Cugnet, Laurent Fairhead, Thierry Fichefet, Simona Flavoni, Lionel Guez, Eric Guilyardi, Frédéric Hourdin, Josefina Ghattas, Masa Kageyama, Myriam Khodri, Sonia Labetoulle, Marie-Pierre Lefebvre, Claire Levy, Laurent Li, Francois Lott,

Gurvan Madec, Marion Marchand, Yann Meurdesoif, Catherine Rio, Michael Schulz, Didier Swingedouw, Sophie Szopa, Nicolas Viovy, and Nicolas Vuichard. IPSL-CM5A-LR model output prepared for CMIP5 historical experiment, served by ESGF, 2016.

- [27] NA Diansky and Ye M Volodin. The reproduction of modern climate by model of atmosphere-ocean general circulation model. *Izv. Atmos. Oceanic Phys*, 38:824–840, 2002.
- [28] Leo J. Donner, Bruce L. Wyman, Richard S. Hemler, Larry W. Horowitz, Yi Ming, Ming Zhao, Jean-Christophe Golaz, Paul Ginoux, S.-J. Lin, M. Daniel Schwarzkopf, John Austin, Ghassan Alaka, William F. Cooke, Thomas L. Delworth, Stuart M. Freidenreich, C. T. Gordon, Stephen M. Griffies, Isaac M. Held, William J. Hurlin, Stephen A. Klein, Thomas R. Knutson, Amy R. Langenhorst, Hyun-Chul Lee, Yanluan Lin, Brian I. Magi, Sergey L. Malyshev, P. C. D. Milly, Vaishali Naik, Mary J. Nath, Robert Pincus, Jeffrey J. Ploshay, V. Ramaswamy, Charles J. Seman, Elena Shevliakova, Joseph J. Sirutis, William F. Stern, Ronald J. Stouffer, R. John Wilson, Michael Winton, Andrew T. Wittenberg, and Fanrong Zeng. The Dynamical Core, Physical Parameterizations, and Basic Simulation Characteristics of the Atmospheric Component AM3 of the GFDL Global Coupled Model CM3. *Journal of Climate*, 24(13):3484–3519, 2011.
- [29] J.-L. Dufresne, M.-A. Foujols, S. Denvil, A. Caubel, O. Marti, O. Aumont, Y. Balkanski, S. Bekki, H. Bellenger, R. Benshila, S. Bony, L. Bopp, P. Braconnot, P. Brockmann, P. Cadule, F. Cheruy, F. Codron, A. Cozic, D. Cugnet, N. de Noblet, J.-P. Duvel, C. Ethé, L. Fairhead, T. Fichefet, S. Flavoni, P. Friedlingstein, J.-Y. Grandpeix, L. Guez, E. Guilyardi, D. Hauglustaine, F. Hourdin, J. Idelkadi, A. nnd Ghattas, S. Joussaume, M. Kageyama, G. Krinner, S. Labetoulle, A. Lahellec, M.-P. Lefebvre, F. Lefevre, C. Levy, Z. X. Li, J. Lloyd, F. Lott, G. Madec, M. Mancip, M. Marchand, S. Masson, Y. Meurdesoif, J. Mignot, I. Musat, S. Parouty, J. Polcher, C. Rio, M. Schulz, D. Swingedouw, S. Szopa, C. Talandier, P. Terray, N. Viovy, and N. Vuichard. Climate change projections using the ipsl-cm5 earth system model: from cmip3 to cmip5. *Climate Dynamics*, 40(9):2123–2165, 2013.
- [30] John Dunne, Jasmin John, Alistair Adcroft, Robert Hallberg, Elena Shevliakova, Ronald Stouffer, John Krasting, William Cooke, Krista Dunne, Lori Sentman, Sergey Malyshev, Stephen Griffies, Matthew Harrison, P. Milly, Peter Phillipps, Bonita Samuels, Michael Spellman, Michael Winton, Andrew Wittenberg, and Niki Zadeh. NOAA GFDL GFDL-ESM2G, historical experiment output for CMIP5 AR5, served by ESGF, 2014.
- [31] John Dunne, Jasmin John, Elena Shevliakova, Ronald Stouffer, Stephen Griffies, Sergey Malyshev, P. Milly, Lori Sentman, Alistair Adcroft, William Cooke, Krista Dunne, Robert Hallberg, Matthew Harrison, John Krasting, Hiram Levy, Peter Phillips, Bonita Samuels, Michael Spelman, Michael Winton, Andrew Wittenberg, and Niki Zadeh. NOAA GFDL GFDL-ESM2M, historical experiment output for CMIP5 AR5, served by ESGF, 2014.
- [32] John Dunne, Jasmin G. John, Alistair J. Adcroft, Stephen M. Griffies, Robert W. Hallberg, Elena Shevliakova, Ronald J. Stouffer, William Cooke, Krista A. Dunne, Matthew J. Harrison, John P. Krasting, Sergey L. Malyshev, P. C. D. Milly, Peter J. Phillipps, Lori T. Sentman, Bonita L. Samuels, Michael J. Spelman, Michael Winton, Andrew T. Wittenberg, and Niki Zadeh. GFDL’s ESM2 Global Coupled Climate–Carbon Earth System Models. Part I: Physical Formulation and Baseline Simulation Characteristics. *Journal of Climate*, 25(19):6646–6665, 2012.
- [33] John Dunne, Jasmin G. John, Alistair J. Adcroft, Robert W. Hallberg, Stephen M. Griffies, Elena Shevliakova, Ronald J. Stouffer, John P. Krasting, Lori T. Sentman, P. C. D. Milly, Sergey L. Malyshev, William Cooke, Krista A. Dunne, Matthew J. Harrison, Hiram Levy, Bonita L. Samuels, Michael J. Spelman, Michael Winton, Andrew T. Wittenberg, Peter J. Phillips, and Niki Zadeh. NOAA GFDL GFDL-CM2p1, historical experiment output for CMIP5 AR5, served by ESGF, 2014.

- [34] John Dunne, Jasmin G. John, Elena Shevliakova, Ronald J. Stouffer, John P. Krasting, Sergey L. Malyshev, P. C. D. Milly, Lori T. Sentman, Alistair J. Adcroft, William Cooke, Krista A. Dunne, Stephen M. Griffies, Robert W. Hallberg, Matthew J. Harrison, Hiram Levy, Andrew T. Wittenberg, Peter J. Phillips, and Niki Zadeh. GFDL’s ESM2 Global Coupled Climate–Carbon Earth System Models. Part II: Carbon System Formulation and Baseline Simulation Characteristics. *Journal of Climate*, 26(7):2247–2267, 2013.
- [35] EC-Earth. EC-Earth-Consortium EC-Earth3 model output prepared for CMIP6 CMIP historical, 2019. Version 20190625.
- [36] EC-Earth. EC-Earth-Consortium EC-Earth3-Veg model output prepared for CMIP6 CMIP historical, 2019. Version 20190605.
- [37] EC-Earth Consortium. EC-EARTH model output prepared for CMIP5 historical, served by ESGF, 2014.
- [38] R. L. H. Essery, M. J. Best, R. A. Betts, P. M. Cox, and C. M. Taylor. Explicit Representation of Subgrid Heterogeneity in a GCM Land Surface Scheme. *Journal of Hydrometeorology*, 4(3):530–543, 2003.
- [39] Laurent Fairhead, Sébastien Denvil, Marie Alice Foujols, Arnaud Caubel, Olivier Marti, Jean-Louis Dufresne, Laurent Bopp, Patricia Cadule, Christian Ethé, Abderrahmane Idelkadi, Martial Mancip, Sébastien Masson, Juliette Mignot, Musat Ionela, Yves Balkanski, Slimane Bekki, Sandrine Bony, Pascale Braconnot, Patrick Brockman, Francis Codron, Anne Cozic, David Cugnet, Thierry Fichefet, Simona Flavoni, Lionel Guez, Eric Guilyardi, Frédéric Hourdin, Josefina Ghattas, Masa Kageyama, Myriam Khodri, Sonia Labetoulle, Marie-Pierre Lefebvre, Claire Levy, Laurent Li, Francois Lott, Gurvan Madec, Marion Marchand, Yann Meurdesoif, Catherine Rio, Michael Schulz, Didier Swingedouw, Sophie Szopa, Nicolas Viovy, and Nicolas Vuichard. IPSL-CM5B-LR model output prepared for CMIP5 historical experiment, served by ESGF, 2016.
- [40] G. Flato, J. Marotzke, B. Abiodun, P. Braconnot, S.C. Chou, W. Collins, P. Cox, F. Driouech, S. Emori, V. Eyring, C. Forest, P. Gleckler, E. Guilyardi, C. Jakob, V. Kattsov, C. Reason, and M. Rummukainen. Evaluation of Climate Models. In T.F. Stocker, D. Qin, G.-K. Plattner, M. Tignor, S.K. Allen, J. Boschung, A. Nauels, Y. Xia, V. Bex, and P.M. Midgley, editors, *Climate Change 2013: The Physical Science Basis. Contribution of Working Group I to the Fifth Assessment Report of the Intergovernmental Panel on Climate Change*. Cambridge University Press, Cambridge, United Kingdom and New York, NY, USA, 2013.
- [41] Marie Alice Foujols, Sébastien Denvil, Arnaud Caubel, Olivier Marti, Jean-Louis Dufresne, Laurent Bopp, Patricia Cadule, Christian Ethé, Abderrahmane Idelkadi, Martial Mancip, Sébastien Masson, Juliette Mignot, Musat Ionela, Yves Balkanski, Slimane Bekki, Sandrine Bony, Pascale Braconnot, Patrick Brockman, Francis Codron, Anne Cozic, David Cugnet, Laurent Fairhead, Thierry Fichefet, Simona Flavoni, Lionel Guez, Eric Guilyardi, Frédéric Hourdin, Josefina Ghattas, Masa Kageyama, Myriam Khodri, Sonia Labetoulle, Marie-Pierre Lefebvre, Claire Levy, Laurent Li, Francois Lott, Gurvan Madec, Marion Marchand, Yann Meurdesoif, Catherine Rio, Michael Schulz, Didier Swingedouw, Sophie Szopa, Nicolas Viovy, and Nicolas Vuichard. IPSL-CM5A-MR model output prepared for CMIP5 historical experiment, served by ESGF, 2016.
- [42] Mekonnen Gebremichael, Menberu M. Bitew, Feyera A. Hirpa, and Gebrehiwot N. Tesfay. Accuracy of satellite rainfall estimates in the blue Nile basin: Lowland plain versus highland mountain. *Water Resources Research*, 50(11):8775–8790, November 2014.
- [43] Peter R. Gent, Gokhan Danabasoglu, Leo J. Donner, Marika M. Holland, Elizabeth C. Hunke, Steve R. Jayne, David M. Lawrence, Richard B. Neale, Philip J. Rasch, Mariana Vertenstein,

- Patrick H. Worley, Zong-Liang Yang, and Minghua Zhang. The Community Climate System Model Version 4. *Journal of Climate*, 24(19):4973–4991, 2011.
- [44] A. Gettelman, C. Hannay, J. T. Bacmeister, R. B. Neale, A. G. Pendergrass, G. Danabasoglu, J.-F. Lamarque, J. T. Fasullo, D. A. Bailey, D. M. Lawrence, and M. J. Mills. High Climate Sensitivity in the Community Earth System Model Version 2 (CESM2). *Geophysical Research Letters*, 46(14):8329–8337, 2019.
- [45] Marco Giorgetta, Johann Jungclaus, Christian Reick, Stephanie Legutke, Victor Brovkin, Traute Crueger, Monika Esch, Kerstin Fieg, Ksenia Glushak, Veronika Gayler, Helmuth Haak, Heinz-Dieter Hollweg, Stefan Kinne, Luis Kornblueh, Daniela Matei, Thorsten Mauritsen, Uwe Mikolajewicz, Wolfgang Müller, Dirk Notz, Thomas Raddatz, Sebastian Rast, Erich Roeckner, Marc Salzmann, Hauke Schmidt, Reiner Schnur, Joachim Segschneider, Katharina Six, Martina Stockhause, Joerg Wegner, Heinrich Widmann, Karl-Hermann Wieners, Martin Claussen, Jochem Marotzke, and Bjorn Stevens. CMIP5 simulations of the Max Planck Institute for Meteorology (MPI-M) based on the MPI-ESM-LR model: The historical experiment, served by ESGF, 2012.
- [46] Marco Giorgetta, Johann Jungclaus, Christian Reick, Stephanie Legutke, Victor Brovkin, Traute Crueger, Monika Esch, Kerstin Fieg, Ksenia Glushak, Veronika Gayler, Helmuth Haak, Heinz-Dieter Hollweg, Stefan Kinne, Luis Kornblueh, Daniela Matei, Thorsten Mauritsen, Uwe Mikolajewicz, Wolfgang Müller, Dirk Notz, Thomas Raddatz, Sebastian Rast, Erich Roeckner, Marc Salzmann, Hauke Schmidt, Reiner Schnur, Joachim Segschneider, Katharina Six, Martina Stockhause, Joerg Wegner, Heinrich Widmann, Karl-Hermann Wieners, Martin Claussen, Jochem Marotzke, and Bjorn Stevens. CMIP5 simulations of the Max Planck Institute for Meteorology (MPI-M) based on the MPI-ESM-MR model: The historical experiment, served by ESGF, 2012.
- [47] Marco Giorgetta, Johann Jungclaus, Christian H. Reick, Stephanie Legutke, Jürgen Bader, Michael Böttinger, Victor Brovkin, Traute Crueger, Monika Esch, Kerstin Fieg, Ksenia Glushak, Veronika Gayler, Helmuth Haak, Heinz-Dieter Hollweg, Tatiana Ilyina, Stefan Kinne, Luis Kornblueh, Daniela Matei, Thorsten Mauritsen, Uwe Mikolajewicz, Wolfgang Mueller, Dirk Notz, Felix Pithan, Thomas Raddatz, Sebastian Rast, Rene Redler, Erich Roeckner, Hauke Schmidt, Reiner Schnur, Joachim Segschneider, Katharina D. Six, Martina Stockhause, Claudia Timmreck, Jörg Wegner, Heinrich Widmann, Karl-H. Wieners, Martin Claussen, Jochem Marotzke, and Bjorn Stevens. Climate and carbon cycle changes from 1850 to 2100 in MPI-ESM simulations for the Coupled Model Intercomparison Project phase 5. *Journal of Advances in Modeling Earth Systems*, 5(3):572–597, 2013.
- [48] C. Gordon, C. Cooper, C. A. Senior, H. Banks, J. M. Gregory, T. C. Johns, J. F. B. Mitchell, and R. A. Wood. The simulation of sst, sea ice extents and ocean heat transports in a version of the hadley centre coupled model without flux adjustments. *Climate Dynamics*, 16(2):147–168, Feb 2000.
- [49] HB Gordon, LD Rotstayn, JL McGregor, MR Dix, EA Kowalczyk, SP O’Farrell, LJ Waterman, AC Hirst, SG Wilson, MA Collier, I.G. Watterson, and T.I. Elliot. The CSIRO Mk3 climate system model. *CSIRO Atmospheric Research technical paper*, 60, 2002.
- [50] Stephen M. Griffies, Michael Winton, Leo J. Donner, Larry W. Horowitz, Stephanie M. Downes, Riccardo Farneti, Anand Gnanadesikan, William J. Hurlin, Hyun-Chul Lee, Zhi Liang, Jaime B. Palter, Bonita L. Samuels, Andrew T. Wittenberg, Bruce L. Wyman, Jianjun Yin, and Niki Zadeh. The GFDL CM3 Coupled Climate Model: Characteristics of the Ocean and Sea Ice Simulations. *Journal of Climate*, 24(13):3520–3544, 2011.
- [51] Huan Guo, Jasmin G John, Chris Blanton, Colleen McHugh, Serguei Nikonov, Aparna Radhakrishnan, Niki T. Zadeh, V Balaji, Jeff Durachta, Christopher Dupuis, Raymond Menzel, Thomas Robinson, Seth Underwood, Hans Vahlenkamp, Krista A. Dunne, Paul PG Gauthier, Paul Ginoux,

- Stephen M. Griffies, Robert Hallberg, Matthew Harrison, William Hurlin, Sergey Malyshev, Vaishali Naik, Fabien Paulot, David J Paynter, Jeffrey Ploshay, Daniel M Schwarzkopf, Charles J Seman, Andrew Shao, Levi Silvers, Bruce Wyman, Yujin Zeng, Alistair Adcroft, John P. Dunne, Isaac M Held, John P. Krasting, Larry W. Horowitz, P.C.D Milly, Elena Shevliakova, Michael Winton, and Ming Zhao. NOAA-GFDL GFDL-CM4 model output prepared for CMIP6 CMIP historical, 2018. Version 20180701.
- [52] Steven Hardiman, Neal Butchart, Tim Hinton, Scott Osprey, Lesley Gray, Chris Jones, and John Hughes. HadGEM2-CC model output prepared for CMIP5 historical, served by ESGF, 2014.
- [53] I. Harris, P.D. Jones, T.J. Osborn, and D.H. Lister. Updated high-resolution grids of monthly climatic observations – the cru ts3.10 dataset. *International Journal of Climatology*, 34(3):623–642, 2014.
- [54] Wilco Hazeleger, Camiel Severijns, Tido Semmler, Simona Ștefănescu, Shuting Yang, Xueli Wang, Klaus Wyser, Emanuel Dutra, José M. Baldasano, Richard Bintanja, Philippe Bougeault, Rodrigo Caballero, Annica M. L. Ekman, Jens H. Christensen, Bart van den Hurk, Pedro Jimenez, Colin Jones, Per Kallberg, Torben Koenigk, Ray McGrath, Pedro Miranda, Twan van Noije, Tim Palmer, José A. Parodi, Torben Schmith, Frank Selten, Trude Storelvmo, Andreas Sterl, Honoré Tapamo, Martin Vancoppenolle, Pedro Viterbo, and Ulrika Willén. Ec-earth. *Bulletin of the American Meteorological Society*, 91(10):1357–1364, 2010.
- [55] I.M. Held, H. Guo, A. Adcroft, J.P. Dunne, L.W. Horowitz, J. Krasting, E. Shevliakova, M. Winton, M. Zhao, M. Bushuk, A.T. Wittenberg, B. Wyman, B. Xiang, R. Zhang, W. Anderson, V. Balaji, L. Donner, K. Dunne, J. Durachta, P.P.G. Gauthier, P. Ginoux, J.-C. Golaz, S.M. Griffies, R. Hallberg, L. Harris, M. Harrison, W. Hurlin, J. John, P. Lin, S.-J. Lin, S. Malyshev, R. Menzel, P.C.D. Milly, Y. Ming, V. Naik, D. Paynter, F. Paulot, V. Ramaswamy, B. Reichl, T. Robinson, A. Rosati, C. Seman, L. Silvers, S. Underwood, and N. Zadeh. Structure and Performance of GFDL’s CM4.0 Climate Model. *Journal of Advances in Modeling Earth Systems*, 2019.
- [56] S. Hirahara, M. Ishii, and Y. Fukuda. Centennial-scale sea surface temperature analysis and its uncertainty. *J of Climate*, 27(14):57–75, 2014.
- [57] Larry Horowitz, Leo Donner, Hiram Levy, Vaishali Naik, Ming Zhao, Michael Winton, Andrew Wittenberg, Bruce Wyman, Yi Ming, P. Milly, Sergey Malyshev, Elena Shevliakova, Paul Ginoux, Christophe Golaz, Stephen Griffies, William Cooke, and M. Schwarzkopf. NOAA GFDL GFDL-CM3, historical experiment output for CMIP5 AR5, served by ESGF, 2014.
- [58] B. Huang and P. W. et al. Thorne. Extended Reconstructed Sea Surface Temperature version 5 (ERSSTv5), Upgrades, validations, and intercomparisons. *J of Climate*, 30(30):8179–8205, 2017.
- [59] IAP-LASG. FGOALS-g2 model output prepared for CMIP5 historical, served by ESGF, 2015.
- [60] JAMSTEC, AORI, NIES. MIROC-ESM-CHEM model output prepared for CMIP5 historical, served by ESGF, 2015.
- [61] JAMSTEC, AORI, NIES. MIROC-ESM model output prepared for CMIP5 historical, served by ESGF, 2015.
- [62] Stephen Jeffrey, Leon Rotstayn, Mark Collier, Stacey Dravitzki, Carlo Hamalainen, Chris Moeseneder, Kenneth Wong, and Jozef Syktus. Australia’s CMIP5 submission using the CSIRO-Mk3.6 model. *Australian Meteorological and Oceanographic Journal*, 63(1):1–13, 2013.
- [63] Stephen Jeffrey, Leon Rotstayn, Mark Collier, Stacey Dravitzki, Carlo Hamalainen, Chris Moeseneder, Kenneth Wong, and Jozef Syktus. CSIRO-Mk3-6-0 model output prepared for CMIP5 historical (Version 2015), served by ESGF, 2016.

- [64] D. Ji, L. Wang, J. Feng, Q. Wu, H. Cheng, Q. Zhang, J. Yang, W. Dong, Y. Dai, D. Gong, R.-H. Zhang, X. Wang, J. Liu, J. C. Moore, D. Chen, and M. Zhou. Description and basic evaluation of beijing normal university earth system model (bnu-esm) version 1. *Geoscientific Model Development*, 7(5):2039–2064, 2014.
- [65] Duoying Ji, Lanning Wang, Jinming Feng, Qizhong Wu, and Huaqiong Cheng. BNU-ESM model output prepared for CMIP5 historical experiment, served by ESGF, 2015.
- [66] T. Johns, R. E. Carnell, J. F. Crossley, J. M. Gregory, J. F. B. Mitchell, C. A. Senior, S. F. B. Tett, and R. A. Wood. The second hadley centre coupled ocean-atmosphere gcm: model description, spinup and validation. *Climate Dynamics*, 13(2):103–134, Feb 1997.
- [67] Tim Johns, Chris Durman, Helene Banks, Malcolm Roberts, Alison McLaren, Jeff Ridley, Catherine Senior, Keith Williams, Andy Jones, Ann Keen, Graham Rickard, Stephen Cusack, Manoj Joshi, Mark Ringer, Buwen Dong, Hilary Spencer, Richard Hill, Jonathn Gregory, Anne Pardaens, Jason Lowe, Alejandro Bodas-Salcedo, Sheila Start, and Yvonne Searl. HadGEM1–Model description and analysis of preliminary experiments for the IPCC Fourth Assessment Report. *Hadley Centre Technical Note*, 55, 2004.
- [68] C. Jones, J. K. Hughes, N. Bellouin, S. C. Hardiman, G. S. Jones, J. Knight, S. Liddicoat, F. M. O’Connor, R. J. Andres, C. Bell, K.-O. Boo, A. Bozzo, N. Butchart, P. Cadule, K. D. Corbin, M. Doutriaux-Boucher, P. Friedlingstein, J. Gornall, L. Gray, P. R. Halloran, G. Hurtt, W. J. Ingram, J.-F. Lamarque, R. M. Law, M. Meinshausen, S. Osprey, E. J. Palin, L. Parsons Chini, T. Raddatz, M. G. Sanderson, A. A. Sellar, A. Schurer, P. Valdes, N. Wood, S. Woodward, M. Yoshioka, and M. Zerroukat. The HadGEM2-ES implementation of CMIP5 centennial simulations. *Geoscientific Model Development*, 4(3):543–570, 2011.
- [69] Chris Jones, John Hughes, Gareth Jones, Nikos Christidis, Fraser Lott, Alistair Sellar, Mark Webb, Alejandro Bodas-Salcedo, Yoko Tsushima, and Gill Martin. HadGEM2-ES model output prepared for CMIP5 historical, served by ESGF, 2014.
- [70] Johann Jungclaus, Marco Giorgetta, Christian Reick, Stephanie Legutke, Victor Brovkin, Traute Crueger, Monika Esch, Kerstin Fieg, Nils Fischer, Ksenia Glushak, Veronika Gayler, Helmuth Haak, Heinz-Dieter Hollweg, Stefan Kinne, Luis Kornblueh, Daniela Matei, Thorsten Mauritsen, Uwe Mikolajewicz, Wolfgang Müller, Dirk Notz, Thomas Pohlmann, Thomas Raddatz, Sebastian Rast, Erich Roeckner, Marc Salzmann, Hauke Schmidt, Reiner Schnur, Joachim Segschneider, Katharina Six, Martina Stockhause, Joerg Wegner, Heinrich Widmann, Karl-Hermann Wieners, Martin Claussen, Jochem Marotzke, and Bjorn Stevens. CMIP5 simulations of the Max Planck Institute for Meteorology (MPI-M) based on the MPI-ESM-P model: The historical experiment, served by ESGF, 2012.
- [71] K-1 model developers. K-1 coupled GCM (MIROC) description. Technical Report 1, Center for Climate System Research (CCSR), University of Tokyo; National Institute for Environmental Studies (NIES); Frontier Research Center for Global Change (FRCGC), 2004.
- [72] Chris Kidd, Andreas Becker, George J. Huffman, Catherine L. Muller, Paul Joe, Gail Skofronick-Jackson, and Dalia B. Kirschbaum. So, how much of the earth’s surface is covered by rain gauges? *Bulletin of the American Meteorological Society*, 98(1):69–78, January 2017.
- [73] Till Kuhlbrodt, Colin G. Jones, Alistair Sellar, Dave Storkey, Ed Blockley, Marc Stringer, Richard Hill, Tim Graham, Jeff Ridley, Adam Blaker, Daley Calvert, Dan Copsey, Richard Ellis, Helene Hewitt, Patrick Hyder, Sarah Ineson, Jane Mulcahy, Antony Siahayan, and Jeremy Walton. The Low-Resolution Version of HadGEM3 GC3.1: Development and Evaluation for Global Climate. *Journal of Advances in Modeling Earth Systems*, 10(11):2865–2888, 2018.

- [74] Jean-Francois Lamarque. CESM1-FASTCHEM model output prepared for CMIP5 historical, served by ESGF, 2013.
- [75] Juwon Lee, Eun-Hee Lee, and Kyung-Hee Seol. Validation of integrated MultisatellitE retrievals for GPM (IMERG) by using gauge-based analysis products of daily precipitation over east asia. *Theoretical and Applied Climatology*, 137(3-4):2497–2512, January 2019.
- [76] Stephanie Legutke and Ernst Maier-Reimer. Climatology of the HOPE-G global ocean-sea ice general circulation model. Technical Report 21, DKRZ, 1999.
- [77] Gen Li and Shang-Ping Xie. Origins of tropical-wide SST biases in CMIP multi-model ensembles. *Geophysical Research Letters*, 39, 2012.
- [78] Lijuan Li, Pengfei Lin, Yongqiang Yu, Bin Wang, Tianjun Zhou, Li Liu, Jiping Liu, Qing Bao, Shiming Xu, Wenyu Huang, Kun Xia, Ye Pu, Li Dong, Si Shen, Yimin Liu, Ning Hu, Mimi Liu, Wenqi Sun, Xiangjun Shi, Weipeng Zheng, Bo Wu, Mirong Song, Hailong Liu, Xuehong Zhang, Guoxiong Wu, Wei Xue, Xiaomeng Huang, Guangwen Yang, Zhenya Song, and Fangli Qiao. The flexible global ocean-atmosphere-land system model, grid-point version 2: Fgoals-g2. *Advances in Atmospheric Sciences*, 30(3):543–560, 2013.
- [79] Keith Lindsay. CESM1-BGC model output prepared for CMIP5 historical, served by ESGF, 2013.
- [80] Keith Lindsay, Gordon B. Bonan, Scott C. Doney, Forrest M. Hoffman, David M. Lawrence, Matthew C. Long, Natalie M. Mahowald, J. Keith Moore, James T. Randerson, and Peter E. Thornton. Preindustrial-Control and Twentieth-Century Carbon Cycle Experiments with the Earth System Model CESM1(BGC). *Journal of Climate*, 27(24):8981–9005, 2014.
- [81] Bentsen M., I. Bethke, J. Debernard, H. Drange, C. Heinze, T. Iversen, A. Kirkevåg, Ø. Seland, and J. Tjiputra. cmip5 output1 NCC NorESM1-M historical, served by ESGF, 2012.
- [82] Daniel R. Marsh. Cesm1-waccm model output prepared for cmip5 historical, served by esgf, 2013.
- [83] Daniel R. Marsh, Michael J. Mills, Douglas E. Kinnison, Jean-Francois Lamarque, Natalia Calvo, and Lorenzo M. Polvani. Climate Change from 1850 to 2005 Simulated in CESM1(WACCM). *Journal of Climate*, 26(19):7372–7391, 2013.
- [84] O. Marti, P. Braconnot, J. Bellier, R. Benshila, S. Bony, P. Brockmann, P. Cadule, A. Caubel, S. Denvil, J.L. Dufresne, L. Fairhead, M.-A. Filiberti, T. Fichet, M.-A. Foujols, P. Friedlingstein, J.-Y. Grandpeix, F. Hourdin, G. Krinner, C. Lévy, G. Madec, I. Musat, N. De Noblet, J. Polcher, and C. Talandier. The new IPSL climate system model: IPSL-CM4. *Note du Pôle de Modélisation, IPSL*, 26:1–86, April 2005.
- [85] GM Martin, Chris Dearden, Christina Greeves, Tim Hinton, Pete Inness, Paul James, VD Pope, MA Ringer, RA Stratton, and GY Yang. Evaluation of the atmospheric performance of HadGAM/GEM1. *Hadley Centre Technical Note*, (54), 2004.
- [86] Thorsten Mauritsen, Jürgen Bader, Tobias Becker, Jörg Behrens, Matthias Bittner, Renate Brokopf, Victor Brovkin, Martin Claussen, Traute Crueger, Monika Esch, Irina Fast, Stephanie Fiedler, Dagmar Fläschner, Veronika Gayler, Marco Giorgetta, Daniel S. Goll, Helmuth Haak, Stefan Hagemann, Christopher Hedemann, Cathy Hohenegger, Tatiana Ilyina, Thomas Jahns, Diego Jimenéz-de-la Cuesta, Johann Jungclaus, Thomas Kleinen, Silvia Kloster, Daniela Kracher, Stefan Kinne, Deike Kleberg, Gitta Lasslop, Luis Kornbluh, Jochem Marotzke, Daniela Matei, Katharina Meraner, Uwe Mikolajewicz, Kameswarrao Modali, Benjamin Möbis, Wolfgang A. Müller, Julia E. M. S. Nabel, Christine C. W. Nam, Dirk Notz, Sarah-Sylvia Nyawira, Hanna Paulsen, Karsten Peters, Robert Pincus, Holger Pohlmann, Julia Pongratz, Max Popp, Thomas Jürgen Raddatz, Sebastian Rast, Rene Redler, Christian H. Reick, Tim Rohrschneider, Vera Schemann, Hauke Schmidt, Reiner Schnur, Uwe Schulzweida, Katharina D. Six, Lukas Stein, Irene Stemmler, Bjorn Stevens, Jin-Song

- von Storch, Fangxing Tian, Aiko Voigt, Philipp Vrese, Karl-Hermann Wieners, Stiig Wilkenskjeld, Alexander Winkler, and Erich Roeckner. Developments in the MPI-M Earth System Model version 1.2 (MPI-ESM1.2) and Its Response to Increasing CO₂. *Journal of Advances in Modeling Earth Systems*, 11(4):998–1038, 2019.
- [87] G. A. Meehl. CCSM4 coupled run for CMIP5 historical (1850-2005), served by ESGF, 2014.
- [88] Seung-Ki Min, Stephanie Legutke, Andreas Hense, and Won-Tae Kwon. Climatology and Internal Variability in a 1000-Year Control Simulation with the Coupled Climate Model ECHO-G. Technical Report 2, Modelle & Daten, Max Planck Institute for Meteorology, 2004.
- [89] Arun Mondal, Venkat Lakshmi, and Hossein Hashemi. Intercomparison of trend analysis of multi-satellite monthly precipitation products and gauge measurements for river basins of india. *Journal of Hydrology*, 565:779–790, 2018.
- [90] NASA/GISS. NASA-GISS: GISS-E2-H-CC model output prepared for CMIP5 historical, served by ESGF, 2014.
- [91] NASA/GISS. NASA-GISS: GISS-E2-R-CC model output prepared for CMIP5 historical, served by ESGF, 2014.
- [92] NASA/GISS. NASA-GISS GISS-E2.1G model output prepared for CMIP6 CMIP historical, 2018. Version 20181015.
- [93] NASA/GISS. NASA-GISS GISS-E2.1H model output prepared for CMIP6 CMIP historical, 2019.
- [94] Richard Neale. CESM1-CAM5 model output prepared for CMIP5 historical, served by ESGF, 2013.
- [95] Richard Neale. CESM1-CAM5.1-Finite volume 2 degree model output prepared for CMIP5 historical, served by ESGF, 2013.
- [96] NUIST. NUIST NESMv3 model output prepared for CMIP6 CMIP historical, 2018. Version 20190630.
- [97] Sungsu Park, Jihoon Shin, Siyun Kim, Eunsil Oh, and Yoonjae Kim. Global Climate Simulated by the Seoul National University Atmosphere Model Version 0 with a Unified Convection Scheme (SAM0-UNICON). *Journal of Climate*, 32(10):2917–2949, 2019.
- [98] Satya Prakash, V. Sathiyamoorthy, C. Mahesh, and R.M. Gairola. An evaluation of high-resolution multisatellite rainfall products over the indian monsoon region. *International Journal of Remote Sensing*, 35(9):3018–3035, March 2014.
- [99] F Qiao, Z Song, and Y Bao. Fio-esm model output prepared for cmip5 historical, served by esgf, 2013.
- [100] F Qiao, Z Song, Y Bao, Y Song, Q Shu, C Huang, and W Zhao. Development and evaluation of an Earth System Model with surface gravity waves. *Journal of Geophysical Research: Oceans*, 118(9):4514–4524, 2013.
- [101] DA Randall, RA Wood, S. Bony, R. Colman, T. Fichet, J. Fyfe, V. Kattsov, A. Pitman, J. Shukla, J. Srinivasan, A. Sumi, and K.E. Taylor. *Climate Models and Their Evaluation*. Cambridge University Press, Cambridge, United Kingdom and New York, NY, USA, 2007.
- [102] N. A. Rayner, D. E. Parker, E. B. Horton, C. K. Folland, L. V. Alexander, D. P. Rowell, E. C. Kent, and A. Kaplan. Global analyses of sea surface temperature, sea ice, and night marine air temperature since the late nineteenth century. *Journal of Geophysical Research: Atmospheres*, 108(D14), 2003.
- [103] Jeff Ridley, Matthew Menary, Till Kuhlbrodt, Martin Andrews, and Tim Andrews. MOHC HadGEM3-GC31-LL model output prepared for CMIP6 CMIP historical, 2019. Version 20190624.

- [104] E. Roeckner, K. Arpe, L. Bengtsson, M. Christoph, M. Claussen, L. Dümenil, M. Esch, M. Giorgetta, U. Schlese, and U. Schulzweida. The atmospheric general circulation model ecam-4: Model description and simulation of present-day climate. Technical Report 218, Max Planck Institute for Meteorology, 1996.
- [105] E. Roeckner, G. Bäuml, L. Bonaventura, R. Brokopf, M. Esch, M. Giorgetta, S. Hagemann, I. Kirchner, L. Kornbluh, E. Manzini, A. Rhodin, U. Schlese, U. Schulzweida, and A. Tompkins. The atmospheric general circulation model ECHAM5 Part I: model description. Technical Report 349, Max Planck Institute for Meteorology, 2003.
- [106] Takashi T. Sakamoto, Yoshiki Komuro, Teruyuki Nishimura, Masayoshi Iishii, Hiroaki Tatebe, Hideo Shiogama, Akira Hasegawa, Takahiro Toyoda, Masato Mori, Tatsuo Suzuki, Yukiko Imada, Toru Nozawa, Kumiko Takata, Takashi Mochizuku, Koji Ogochi, Seita Emori, Hiroyasu Hasumi, and Masahide Kimoto. MIROC4 – A New High-Resolution Atmosphere-Ocean Coupled General Circulation Model. *Journal of the Meteorological Society of Japan. Ser. II*, 90(3):325–359, 2012.
- [107] D Salas-Méla, F Chauvin, M Déqué, H Douville, JF Gueremy, P Marquet, S Planton, JF Royer, and S Tyteca. Description and validation of the CNRM-CM3 global coupled model. *CNRM working note*, 103:36, 2005.
- [108] G. A. Schmidt, M. Kelley, L. Nazarenko, R. Ruedy, G. L. Russell, I. Aleinov, M. Bauer, S. E. Bauer, M. K. Bhat, R. Bleck, V. Canuto, Y.-H. Chen, Y. Cheng, T. L. Clune, A. Del Genio, R. de Fainchtein, G. Faluvegi, J. E. Hansen, R. J. Healy, N. Y. Kiang, D. Koch, A. A. Lacis, A. N. LeGrande, J. Lerner, K. K. Lo, E. E. Matthews, S. Menon, R. L. Miller, V. Oinas, A. O. Oloso, J. P. Perlwitz, M. J. Puma, W. M. Putman, D. Rind, A. Romanou, M. Sato, D. T. Shindell, S. Sun, R. A. Syed, N. Tausnev, K. Tsigaridis, N. Unger, A. Voulgarakis, M.-S. Yao, and J. Zhang. Configuration and assessment of the GISS ModelE2 contributions to the CMIP5 archive. *J. Adv. Model. Earth Syst.*, 6(1):141–184, 2014.
- [109] Udo Schneider, Andreas Becker, Peter Finger, Anja Meyer-Christoffer, Markus Ziese, and Bruno Rudolf. GPCP’s new land surface precipitation climatology based on quality-controlled in situ data and its role in quantifying the global water cycle. *Theoretical and Applied Climatology*, 115(1):15–40, 2014.
- [110] Enrico Scoccimarro and Silvio Gualdi. CMCC-CM model output prepared for CMIP5 historical, served by ESGF, 2014.
- [111] Enrico Scoccimarro, Silvio Gualdi, Alessio Bellucci, Antonella Sanna, Pier Giuseppe Fogli, Elisa Manzini, Marcello Vichi, Paolo Oddo, and Antonio Navarra. Effects of Tropical Cyclones on Ocean Heat Transport in a High-Resolution Coupled General Circulation Model. *Journal of Climate*, 24(16):4368–4384, 2011.
- [112] R. Sférian et al. Evaluation of CNRM Earth-System model, CNRM-ESM2-1 : role of Earth system processes in present-day and future climate. *Journal of Advances in Modeling Earth Systems*, 2019. in revision.
- [113] Roland Sférian. CNRM-CERFACS CNRM-ESM2-1 model output prepared for CMIP6 CMIP historical, 2018. Version 20181206.
- [114] A Sellar, CG Jones, J Mulcahy, Y Tang, A Yool, A Wiltshire, FM O’Connor, M Stringer, R Hill, J Palmieri, S. Woodward, L. de Mora, T. Kuhlbrodt, S. Rumbold, D. I. Kelley, R. Ellis, C. E. Johnson, J. Walton, N. L. Abraham, M. B. Andrews, T. Andrews, A. T. Archibald, S. Berthou, E. Burke, E. Blockley, K. Carslaw, M. Dalvi, J. Edwards, G. A. Folberth, N. Gedney, P. T. Griffiths, A. B. Harper, M. A. Hendry, A. J. Hewitt, B. Johnson, A. Jones, C. D. Jones, J. Keeble, S. Liddicoat, O. Morgenstern, R. J. Parker, V. Predoi, E. Robertson, A. Siahann, R. S. Smith, R. Swaminathan,

- M. T. Woodhouse, G. Zeng, and M. Zerroukat. UKESM1: Description and Evaluation of the UK Earth System Model. *J. Adv. Model. Earth Sy.*, submitted, 2019.
- [115] Tido Semmler, Sergey Danilov, Thomas Rackow, Dmitry Sidorenko, Dirk Barbi, Jan Hegewald, Dmitri Sein, Qiang Wang, and Thomas Jung. AWI AWI-CM1.1MR model output prepared for CMIP6 CMIP historical, 2018. Version 20181218.
- [116] Stephane S en esi, Jacques Richon, Laurent Franchist eguy, Sophie Tyteca, Marie-Pierre Moine, Aurore Voldoire, Emilia Sanchez-Gomez, David Salas y M elia, Bertrand Decharme, Christophe Cassou, Sophie Valcke, Isabelle Beau, Antoinette Alias, Matthieu Chevallier, Michel D equ e, Julie Deshayes, Herv e Douville, Gurvan Madec, Eric Maisonnave, Serge Planton, David Saint-Martin, Sophie Szopa, Ramdane Alkama, Sophie Belamari, Alain Braun, Laure Coquart, and Fabrice Chauvin. CNRM-CM5 model output prepared for CMIP5 historical, served by ESGF, 2014.
- [117] Stephane S en esi, Jacques Richon, Laurent Franchist eguy, Sophie Tyteca, Marie-Pierre Moine, Aurore Voldoire, Emilia Sanchez-Gomez, David Salas y M elia, Bertrand Decharme, Christophe Cassou, Sophie Valcke, Isabelle Beau, Antoinette Alias, Matthieu Chevallier, Michel D equ e, Julie Deshayes, Herv e Douville, Gurvan Madec, Eric Maisonnave, Serge Planton, David Saint-Martin, Sophie Szopa, Ramdane Alkama, Sophie Belamari, Alain Braun, Laure Coquart, and Fabrice Chauvin. CNRM-CM5-2 model output prepared for CMIP5 historical, served by ESGF, 2014.
- [118] Doug Smith, Stephen Cusack, Andrew W. Colman, Chris K. Folland, Glen R. Harris, and James M. Murphy. Improved Surface Temperature Prediction for the Coming Decade from a Global Climate Model. *Science*, 317(5839):796–799, 2007.
- [119] Doug Smith, Rosie Eade, Nick J Dunstone, David Fereday, James M Murphy, Holger Pohlmann, and Adam A Scaife. Skilful multi-year predictions of Atlantic hurricane frequency. *Nature geoscience*, 3(12):846, 2010.
- [120] Doug Smith, Holger Pohlmann, and Rosie Eade. HadCM3 model output prepared for CMIP5 historical, served by ESGF, 2014.
- [121] SNU. SNU SAM0-UNICON model output prepared for CMIP6 CMIP historical, 2018. Version 20190323.
- [122] Qiaohong Sun, Chiyuan Miao, Qingyun Duan, Hamed Ashouri, Soroosh Sorooshian, and Kuo-Lin Hsu. A review of global precipitation data sets: Data sources, estimation, and intercomparisons. *Reviews of Geophysics*, 56(1):79–107, January 2018.
- [123] K. Sunilkumar, T. Narayana Rao, K. Saikranthi, and M. Purnachandra Rao. Comprehensive evaluation of multisatellite precipitation estimates over india using gridded rainfall data. *Journal of Geophysical Research: Atmospheres*, 120(17):8987–9005, September 2015.
- [124] N. C. Swart, J. N. S. Cole, V. V. Kharin, M. Lazare, J. F. Scinocca, N. P. Gillett, J. Anstey, V. Arora, J. R. Christian, S. Hanna, Y. Jiao, W. G. Lee, F. Majaess, O. A. Saenko, C. Seiler, C. Seinen, A. Shao, L. Solheim, K. von Salzen, D. Yang, and B. Winter. The Canadian Earth System Model version 5 (CanESM5.0.3). *Geoscientific Model Development Discussions*, 2019:1–68, 2019.
- [125] Mou Tan, Ab Ibrahim, Zheng Duan, Arthur Cracknell, and Vincent Chaplot. Evaluation of six high-resolution satellite and ground-based precipitation products over malaysia. *Remote Sensing*, 7(2):1504–1528, January 2015.
- [126] Yongming Tang, Steve Rumbold, Rich Ellis, Douglas Kelley, Jane Mulcahy, Alistair Sellar, Jeremy Walton, and Colin Jones. MOHC UKESM1.0-LL model output prepared for CMIP6 CMIP historical, 2019. Version 20190406.

- [127] H. Tatebe, T. Ogura, T. Nitta, Y. Komuro, K. Ogochi, T. Takemura, K. Sudo, M. Sekiguchi, M. Abe, F. Saito, M. Chikira, S. Watanabe, M. Mori, N. Hirota, Y. Kawatani, T. Mochizuki, K. Yoshimura, K. Takata, R. O’ishi, D. Yamazaki, T. Suzuki, M. Kurogi, T. Kataoka, M. Watanabe, and M. Kimoto. Description and basic evaluation of simulated mean state, internal variability, and climate sensitivity in MIROC6. *Geoscientific Model Development*, 12(7):2727–2765, 2019.
- [128] Hiroaki Tatebe and Masahiro Watanabe. MIROC MIROC6 model output prepared for CMIP6 CMIP historical, 2018. Version 20181212.
- [129] J. Tjiputra, C. Roelandt, M. Bentsen, D. Lawrence, T. Lorentzen, J. Schwinger, Ø. Seland, and C. Heinze. cmip5 output1 NCC NorESM1-ME historical, served by ESGF, 2012.
- [130] J. Tjiputra, C. Roelandt, M. Bentsen, D. M. Lawrence, T. Lorentzen, J. Schwinger, Ø. Seland, and C. Heinze. Evaluation of the carbon cycle components in the Norwegian Earth System Model (NorESM). *Geoscientific Model Development*, 6(2):301–325, 2013.
- [131] Marcello Vichi, Elisa Manzini, Pier Giuseppe Fogli, Andrea Alessandri, Lavinia Patara, Enrico Scoccimarro, Simona Masina, and Antonio Navarra. Global and regional ocean carbon uptake and climate change: sensitivity to a substantial mitigation scenario. *Climate Dynamics*, 37(9):1929–1947, 2011.
- [132] A. Voldoire, D. Saint-Martin, S. Sénési, B. Decharme, A. Alias, M. Chevallier, J. Colin, J.-F. Guérémy, M. Michou, M.-P. Moine, P. Nabat, R. Roehrig, D. Salas y Mélia, R. Sférian, S. Valcke, I. Beau, S. Belamari, S. Berthet, C. Cassou, J. Cattiaux, J. Deshayes, H. Douville, C. Ethé, L. Franchistéguy, O. Geoffroy, C. Lévy, G. Madec, Y. Meurdesoif, R. Msadek, A. Ribes, E. Sanchez-Gomez, L. Terray, and R. Waldman. Evaluation of CMIP6 DECK Experiments With CNRM-CM6-1. *Journal of Advances in Modeling Earth Systems*, 11(7):2177–2213, 2019.
- [133] A. Voldoire, E. Sanchez-Gomez, D. Salas y Mélia, C. Decharme, B. and Cassou, S. Sénési, S. Valcke, I. Beau, A. Alias, M. Chevallier, M. Déqué, J. Deshayes, H. Douville, E. Fernandez, G. Madec, E. Maisonnave, M.-P. Moine, S. Planton, D. Saint-Martin, S. Szopa, S. Tyteca, R. Alkama, S. Belamari, A. Braun, L. Coquart, and F. Chauvin. The cnrm-cm5.1 global climate model: description and basic evaluation. *Climate Dynamics*, 40(9):2091–2121, May 2013.
- [134] Aurore Voldoire. CMIP6 simulations of the CNRM-CERFACS based on CNRM-CM6-1 model for CMIP experiment historical, 2018. Version 20180917.
- [135] E. M. Volodin, N. A. Dianskii, and A. V. Gusev. Simulating present-day climate with the inmcm4.0 coupled model of the atmospheric and oceanic general circulations. *Izvestiya, Atmospheric and Oceanic Physics*, 46(4):414–431, 2010.
- [136] Evgeny Volodin and Nikolay Diansky. inmcm4 model output prepared for CMIP5 Historical, served by ESGF, 2013.
- [137] W. M. Washington, J. W. Weatherly, G. A. Meehl, A. J. Semtner Jr., T. W. Bettge, A. P. Craig, W. G. Strand Jr., J. Arblaster, V. B. Wayland, R. James, and Y. Zhang. Parallel climate model (pcm) control and transient simulations. *Climate Dynamics*, 16(10):755–774, 2000.
- [138] Masahiro Watanabe, Tatsuo Suzuki, Ryouta O’ishi, Yoshiaki Komuro, Shingo Watanabe, Seita Emori, Toshihiko Takemura, Minoru Chikira, Tomoo Ogura, Miho Sekiguchi, Kumiko Takata, Dai Yamazaki, Tokuta Yokohata, Toru Nozawa, Hiroyasu Hasumi, Hiroaki Tatebe, and Masahide Kimoto. Improved climate simulation by miroc5: Mean states, variability, and climate sensitivity. *Journal of Climate*, 23(23):6312–6335, 2010.
- [139] S. Watanabe, T. Hajima, K. Sudo, T. Nagashima, T. Takemura, H. Okajima, T. Nozawa, H. Kawase, M. Abe, T. Yokohata, T. Ise, H. Sato, E. Kato, K. Takata, S. Emori, and M. Kawamiya. MIROC-

- ESM 2010: model description and basic results of CMIP5-20c3m experiments. *Geoscientific Model Development*, 4(4):845–872, 2011.
- [140] M. D. Woelfle, C. S. Bretherton, C. Hannay, and R. Neale. Evolution of the Double-ITCZ Bias Through CESM2 Development. *Journal of Advances in Modeling Earth Systems*, 11(7):1873–1893, 2019.
- [141] T. Wu, Y. Lu, Y. Fang, X. Xin, L. Li, W. Li, W. Jie, J. Zhang, Y. Liu, L. Zhang, F. Zhang, Y. Zhang, F. Wu, J. Li, M. Chu, Z. Wang, X. Shi, X. Liu, M. Wei, A. Huang, Y. Zhang, and X. Liu. The Beijing Climate Center Climate System Model (BCC-CSM): the main progress from CMIP5 to CMIP6. *Geoscientific Model Development*, 12(4):1573–1600, 2019.
- [142] T. Wu, F. Zhang, J. Zhang, W. Jie, Y. Zhang, F. Wu, L. Li, X. Liu, X. Lu, L. Zhang, J. Wang, and A. Hu. Beijing Climate Center Earth System Model version 1 (BCC-ESM1): Model Description and Evaluation. *Geoscientific Model Development Discussions*, 2019:1–47, 2019.
- [143] Tongwen Wu, Lianchun Song, Weiping Li, Zaizhi Wang, Hua Zhang, Xiaoge Xin, Yanwu Zhang, Li Zhang, Jianglong Li, Fanghua Wu, Yiming Liu, Fang Zhang, Xueli Shi, Min Chu, Jie Zhang, Yongjie Fang, Fang Wang, Yixiong Lu, Xiangwen Liu, Min Wei, Qianxia Liu, Wenyan Zhou, Min Dong, Qigeng Zhao, Jinjun Ji, Laurent Li, and Mingyu Zhou. An overview of bcc climate system model development and application for climate change studies. *Journal of Meteorological Research*, 28(1):34–56, 2014.
- [144] Tongwen Wu and Xiaoge Xin. bcc-csm1-1-m model output prepared for cmip5 historical experiment, served by esgf, 2015.
- [145] Tongwen Wu and Xiaoge Xin. bcc-csm1-1 model output prepared for CMIP5 historical experiment, served by ESGF, 2015.
- [146] Yu Yongqiang, Yu Rucong, Zhang Xuehong, and Liu Hailong. A flexible coupled ocean-atmosphere general circulation model. *Advances in Atmospheric Sciences*, 19(1):169–190, 2002.
- [147] Yu Yongqiang, Zhang Xuehong, and Guo Yufu. Global coupled ocean-atmosphere general circulation models in lasg/iap. *Advances in Atmospheric Sciences*, 21(3):444–455, 2004.
- [148] Seiji Yukimoto, Yukimasa Adachi, Masahiro Hosaka, Tomonori Sakami, Hiromasa Yoshimura, Mikitoshi Hirabara, Taichu Tanaka, Eiki Shindo, Hiroyuki Tsujino, Makoto Deushi, Ryo Mizuta, Shoukichi Yabu, Atsushi Obata, Hideyuki Nakano, Tsuyoshi Koshiro, Tomoaki Ose, and Akio Kitoh. MRI-CGCM3 model output prepared for CMIP5 historical, served by ESGF, 2015.
- [149] Seiji Yukimoto, Yukimasa Adachi, Masahiro Hosaka, Tomonori Sakami, Hiromasa Yoshimura, Mikitoshi Hirabara, Taichu Y. Tanaka, Eiki Shindo, Hiroyuki Tsujino, Makoto Deushi, Ryo Mizuta, Shoukichi Yabu, Atsushi Obata, Hideyuki Nakano, Tsuyoshi Koshiro, Tomoaki Ose, and Akio Kitoh. A new global climate model of the meteorological research institute: Mri-cgcm3 – model description and basic performance –. *Journal of the Meteorological Society of Japan. Ser. II*, 90A:23–64, 2012.
- [150] Seiji Yukimoto, Hideaki Kawai, Tsuyoshi Koshiro, Naga Oshima, Kohei Yoshida, Shogo Urakawa, Hiroyuki Tsujino, Makoto Deushi, Taichu Tanaka, Masahiro Hosaka, Shoukichi Yabu, Hiromasa Yoshimura, Eiki Shindo, Ryo Mizuta, Atsushi Obata, Yukimasa Adachi, and Masayoshi Ishii. The Meteorological Research Institute Earth System Model Version 2.0, MRI-ESM2.0: Description and Basic Evaluation of the Physical Component. *Journal of the Meteorological Society of Japan. Ser. II*, 97(5):931–965, 2019.
- [151] Seiji Yukimoto, Tsuyoshi Koshiro, Hideaki Kawai, Naga Oshima, Kohei Yoshida, Shogo Urakawa, Hiroyuki Tsujino, Makoto Deushi, Taichu Tanaka, Masahiro Hosaka, Hiromasa Yoshimura, Eiki Shindo, Ryo Mizuta, Masayoshi Ishii, Atsushi Obata, and Yukimasa Adachi. MRI MRI-ESM2.0 model output prepared for CMIP6 CMIP historical, 2019. Version 20190603.

- [152] Seiji Yukimoto, Akira Noda, Akio Kitoh, Masato Sugi, Yoshiteru Kitamura, Masahiro Hosaka, Kiyotaka Shibata, Shuhei Maeda, and Takao Uchiyama. The New Meteorological Research Institute Coupled GCM MRI-CGCM2. *Papers in Meteorology and Geophysics*, 51(2):47–88, 2001.