

## ARTICLE OPEN



# Discrete interactions between a few interlayer excitons trapped at a MoSe<sub>2</sub>–WSe<sub>2</sub> heterointerface

Malte Kremser<sup>1</sup>✉, Mauro Brotons-Gisbert<sup>2</sup>, Johannes Knörzer<sup>3</sup>, Janine Gückelhorn<sup>1</sup>, Moritz Meyer<sup>1</sup>, Matteo Barbone<sup>4</sup>, Andreas V. Stier<sup>1</sup>, Brian D. Gerardot<sup>2</sup>, Kai Müller<sup>4</sup> and Jonathan J. Finley<sup>1</sup>✉

Inter-layer excitons (IXs) in hetero-bilayers of transition metal dichalcogenides (TMDs) represent an exciting emergent class of long-lived dipolar composite bosons in an atomically thin, near-ideal two-dimensional (2D) system. The long-range interactions that arise from the spatial separation of electrons and holes can give rise to novel quantum, as well as classical multi-particle correlation effects. Indeed, first indications of exciton condensation have been reported recently. In order to acquire a detailed understanding of the possible many-body effects, the fundamental interactions between individual IXs have to be studied. Here, we trap a tunable number of dipolar IXs ( $N_{IX} \sim 1-5$ ) within a nanoscale confinement potential induced by placing a MoSe<sub>2</sub>–WSe<sub>2</sub> hetero-bilayer (HBL) onto an array of SiO<sub>2</sub> nanopillars. We control the mean occupation of the IX trap via the optical excitation level and observe discrete sharp-line emission from different configurations of interacting IXs. The intensities of these features exhibit characteristic near linear, quadratic, cubic, quartic and quintic power dependencies, which allows us to identify them as different multiparticle configurations with  $N_{IX} \sim 1-5$ . We directly measure the hierarchy of dipolar and exchange interactions as  $N_{IX}$  increases. The interlayer *biexciton* ( $N_{IX} = 2$ ) is found to be an emission doublet that is blue-shifted from the single exciton by  $\Delta E = (8.4 \pm 0.6)$  meV and split by  $2J = (1.2 \pm 0.5)$  meV. The blueshift is even more pronounced for triexcitons ( $(12.4 \pm 0.4)$  meV), quadexcitons ( $(15.5 \pm 0.6)$  meV) and quintexcitons ( $(18.2 \pm 0.8)$  meV). These values are shown to be mutually consistent with numerical modelling of dipolar excitons confined to a harmonic trapping potential having a confinement lengthscale in the range  $\ell \approx 3$  nm. Our results contribute to the understanding of interactions between IXs in TMD hetero-bilayers at the discrete limit of only a few excitations and represent a key step towards exploring quantum correlations between IXs in TMD hetero-bilayers.

npj 2D Materials and Applications (2020)4:8; <https://doi.org/10.1038/s41699-020-0141-3>

## INTRODUCTION

HBLs of van-der-Waals bonded 2D TMDs<sup>1–9</sup> feature an atomically sharp interface with a type-II band alignment and frontier orbital couplings defined by the mutual angular orientation of the basal plane of the component layers<sup>1</sup>. Such atomically thin 2D heterointerfaces can host IXs—Coulomb-bound states of electrons (*e*) and holes (*h*) located in the different component monolayers<sup>1</sup>. The spatial separation of *e* and *h* gives rise to a significantly increased lifetime compared to intralayer excitons<sup>1,3,10</sup> and a static electric out-of-plane dipole moment with a magnitude  $|p_z|/e \sim 0.7$  nm for the MoSe<sub>2</sub>–WSe<sub>2</sub> heterointerface<sup>1</sup>. The enhanced radiative lifetime of IXs allows them to cool towards the lattice temperature before recombination takes place, whereas the large static dipole moment facilitates tuning of the IX energy<sup>1,11,12</sup> and lifetime<sup>11,12</sup> using static electric fields. In optical experiments, dipole–dipole repulsion between IXs gives rise to strongly blueshifting emission with increasing IX density and the potential to explore the many-body physics of dipolar composite bosons in a solid-state system<sup>1,3,10</sup>. It has also been demonstrated that applying strain to the HBL can strongly tune the IX energy<sup>13</sup>; a method that is routinely used to define exciton trapping potentials in monolayer TMDs<sup>14–16</sup>. Overall, IXs constitute a highly tunable platform for optically exploring and controlling interacting gases of dipolar excitons in the solid state.

## RESULTS AND DISCUSSION

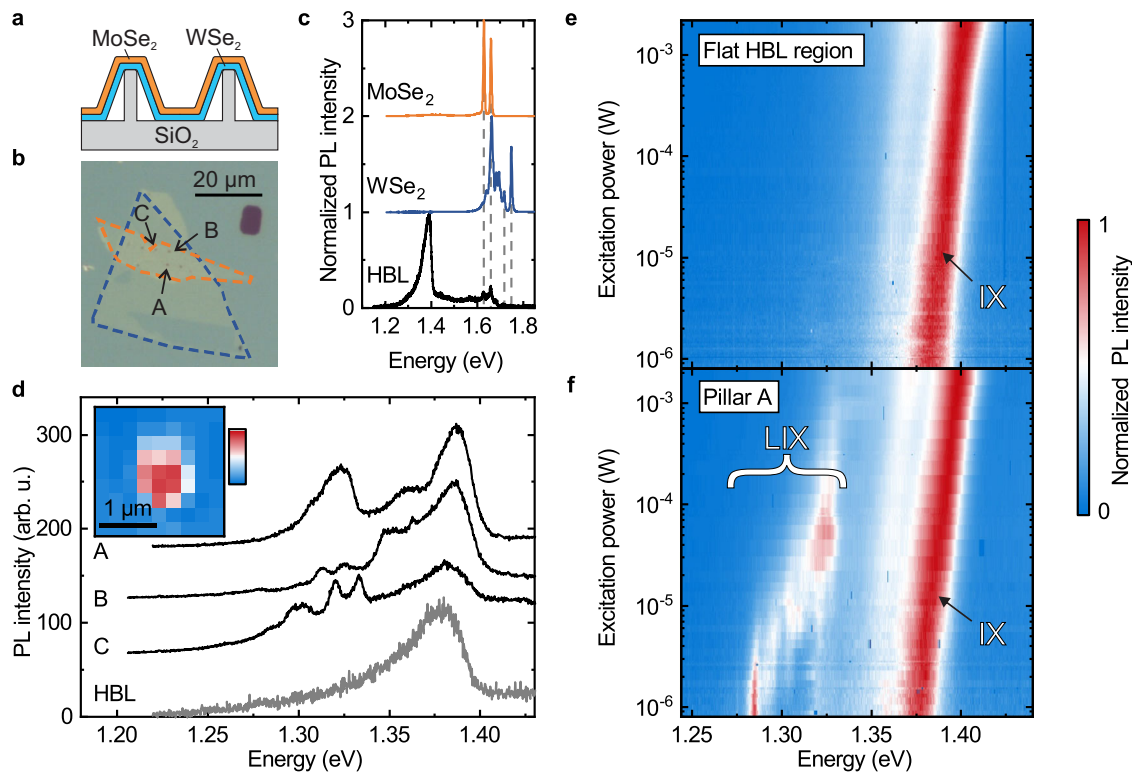
### Trapping interlayer excitons

Our sample structure is schematically depicted in Fig. 1a. It consists of stacked monolayers of WSe<sub>2</sub> and MoSe<sub>2</sub> that form a HBL, which is then transferred onto a SiO<sub>2</sub> substrate patterned with nanopillars having a height of  $\sim 90$  nm and diameter  $\sim 130$  nm (see “Methods”). Figure 1b (enhanced in Supplementary Note 1) shows an optical micrograph of the sample in which the monolayer MoSe<sub>2</sub>, WSe<sub>2</sub> and HBL regions can be seen, as well as the nanopillars in the HBL region. The contours of the WSe<sub>2</sub> and MoSe<sub>2</sub> monolayers are outlined with blue and orange dashed lines, respectively, and pillars that did not pierce the TMD layers appear as black dots. Figure 1c shows normalized spectra recorded from three different unstrained sample regions, namely the WSe<sub>2</sub> monolayer, the MoSe<sub>2</sub> monolayer and the WSe<sub>2</sub>–MoSe<sub>2</sub>–HBL away from the nanopillars. These spectra were recorded at  $T = 10$  K with cw excitation at 633 nm and a power of  $P_{ex} = 35$   $\mu$ W focused to  $\sim 1$   $\mu$ m. Both, WSe<sub>2</sub> and MoSe<sub>2</sub>, have prominent emission features at their characteristic exciton and trion energies at 1.75 eV and 1.72 eV<sup>17</sup>, and 1.66 eV and 1.63 eV<sup>18</sup>, respectively. Furthermore, the WSe<sub>2</sub> component monolayer exhibits a broader band of unresolved emission at lower energies (1.60–1.70 eV) that has been identified as stemming from dark excitons<sup>19,20</sup> and trions<sup>21</sup>, charged biexcitons<sup>22–26</sup> and defect-bound excitons<sup>27,28</sup>. Each of these emission features are also present in the HBL region,

<sup>1</sup>Walter Schottky Institut, Physik-Department and MCQST, Technische Universität München, Am Coulombwall 4, 85748 Garching, Germany. <sup>2</sup>Institute for Photonics and Quantum Sciences, SUPA, Heriot-Watt University, Edinburgh EH14 4AS, UK. <sup>3</sup>Max-Planck-Institute for Quantum Optics and MCQST, Hans-Kopfermann-Str. 1, 85748 Garching, Germany.

<sup>4</sup>Walter Schottky Institut, Department of Electrical and Computer Engineering and MCQST, Technische Universität München, Am Coulombwall 4, 85748 Garching, Germany.

✉email: Malte.Kremser@wsi.tum.de; Jonathan.Finley@wsi.tum.de

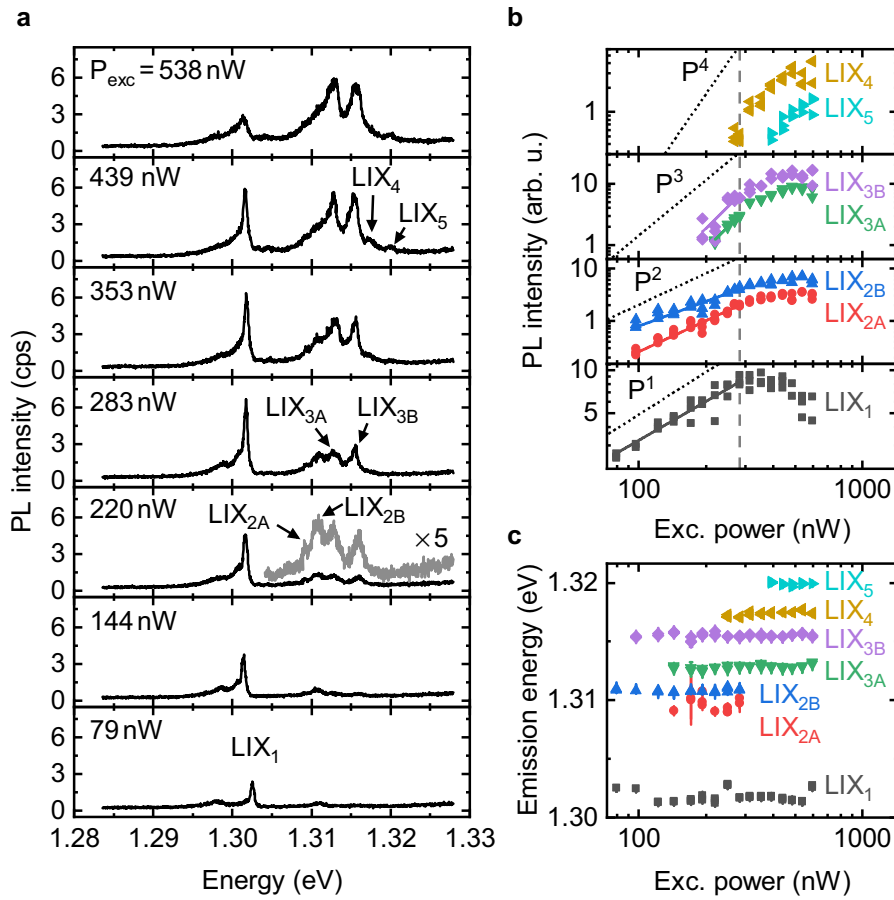


**Fig. 1** Low-temperature photoluminescence from free and localized interlayer excitons in a MoSe<sub>2</sub>-WSe<sub>2</sub> heterobilayer. **a** Schematic representation, and **b** optical micrograph of the sample used in this work. The monolayers of WSe<sub>2</sub> and MoSe<sub>2</sub> are outlined with blue and orange dashed lines, respectively. The nanopillars appear as black dots in the heterobilayer region. **c** Example spectra recorded from the unstrained monolayer and heterobilayer regions. **d** Typical  $\mu$ PL spectra recorded from three pillar sites (A, B and C as marked in **a**) in the heterobilayer region and a reference spectrum from the unstrained heterobilayer. Inset: example spatially resolved integrated PL intensity of a low-energy emission peak at pillar A. **e, f** Intensity-normalized PL spectra recorded from the HBL at different excitation powers at a position outside the pillar region (**e**) and on pillar A (**f**). All spectra were recorded at 10 K and, besides the power-dependent measurements shown in panels **e** and **f**, subject to strong continuous wave (cw) excitation at 633 nm using a power of 35  $\mu$ W focused to a spot-size of  $\sim$ 1  $\mu$ m.

albeit strongly quenched, due to interlayer charge transfer that occurs over sub-picosecond timescales, faster than the exciton lifetime<sup>29–31</sup>. The most prominent emission feature from the HBL is at  $\sim$ 1.38 eV and is attributed to IXs formed by an electron in the MoSe<sub>2</sub> and a hole in the WSe<sub>2</sub><sup>1</sup>. This attribution is supported by the emission energy and the characteristically asymmetric line-shape featuring red-shifted emission from momentum-indirect IXs<sup>10</sup>. Figure 1e shows the power dependence of the IX emission revealing a significant blueshift ( $\geq$ 20 meV) arising from repulsive dipolar interactions in the gas of IX for increasing excitation levels<sup>3,32</sup>. We note that this blueshift does not occur over the whole range of excitation levels, but rather exhibits an onset close to  $P_{ex} \sim$  30 nW, marking a low-density regime where dipolar interactions are weak (see Supplementary Note 2). Furthermore, the low-density IX regime also manifests itself by a deviation from the  $\sqrt{P_{ex}}$  dependence of the IX emission intensity, which might be indicative of non-radiative exciton–exciton annihilation<sup>33</sup> only above a threshold density.

The nanopillars have a strong impact on the IX emission spectra. Typical data is presented in Fig. 1d that compares emission of unstrained regions of the HBL with that recorded from three pillar sites (labelled A, B and C as in Fig. 1a). The characteristic IX emission at 1.38 eV can still be observed in each emission spectrum since the probed sample volume is much larger than the nanopillar size. However, additional peaks emerge in the vicinity of the nanopillar sites, red-shifted by up to  $\sim$ 100 meV from the peak of the free IX emission. The observation of a pronounced red-shift is similar to reports of strain-induced bandgap modulation in monolayer MoSe<sub>2</sub><sup>16</sup>, MoS<sub>2</sub><sup>34</sup> and particularly WSe<sub>2</sub><sup>14,15</sup>, where this effect is routinely used to generate quantum emitters. We

attribute these features to localized interlayer excitons (LIXs) at the pillar sites, most likely due to strain-related trapping potentials around the nanopillar. The interlayer exciton character is confirmed by PL-excitation spectroscopy detected on the LIX features, that clearly reveals free exciton fingerprints of both MoSe<sub>2</sub> and WSe<sub>2</sub> component monolayers, and time-resolved PL measurements, that show similar radiative decay times for localized and free IXs (see Supplementary Notes 3 and 4). To illustrate the confinement of the LIX features to the pillar sites, the inset of Fig. 1d shows the spatially resolved emission intensity of an example LIX peak at pillar site A. The spatial extent of this feature is clearly limited by the spatial resolution of our  $\mu$ PL setup (1  $\mu$ m), indicative of a point-like source. Figure 1e, f compare normalized IX  $\mu$ PL spectra plotted as a function of excitation power from the flat region of the HBL and on pillar A, respectively. In both cases, free IX emission is observed that blueshifts by up to  $\sim$ 20 meV over the examined power range. The spectra recorded from pillar A additionally exhibit discrete LIX emission lines. Individually, these features do not blueshift with excitation power, in strong contrast to the broad IX peak. Instead, changes of excitation power result in a redistribution of the PL intensity among the different LIX peaks. However, if one analyses the entirety of all LIX emission peaks and determines its center of the spectral weight as a function of excitation power (see Supplementary Note 5), one finds a collective LIX blueshift which is slightly stronger than that of the free IX, consistent with stronger interactions for IXs spatially confined to a trapping potential. This effect of the LIX emission shifting among several discrete peaks with varying excitation power was observed for all pillars exhibiting LIX emission (see Supplementary Note 6) and was



**Fig. 2** Few-particle interactions in a sequentially filled IX trapping potential. **a** PL spectra of localized IXs at the same pillar for varying powers. **b** Intensity of individual emission peaks determined by integrating the signal in a narrow spectral region around the peak center plotted as a function of excitation power. The characteristic power exponents of the intensity dependencies are given in the main text. The grey dashed line denotes the onset of saturation effects. **c** Emission energies of the different  $LIX_i$  peaks presented in panel a plotted as a function of excitation power. Error bars represent fit uncertainties.

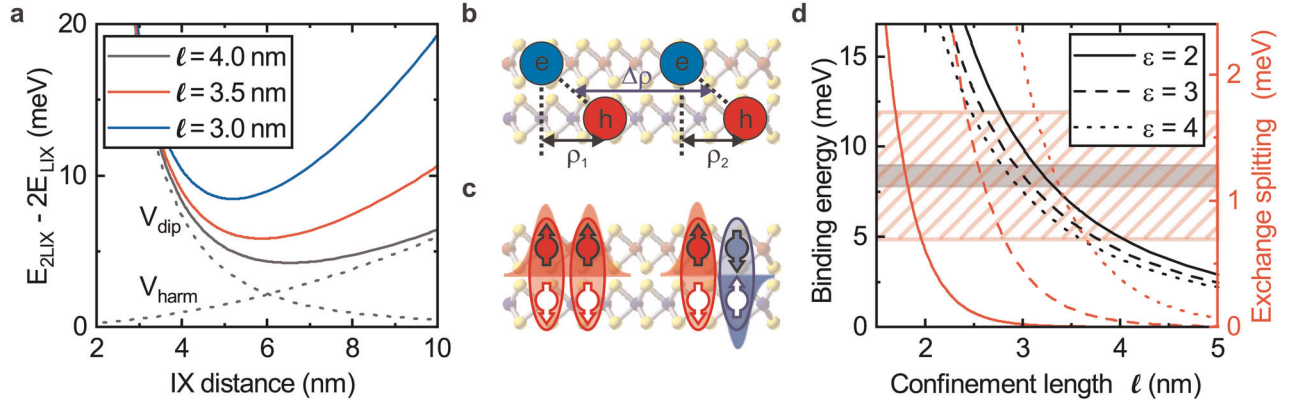
reproducible following thermal cycling. Exemplary polarization-resolved LIX spectra are shown in Supplementary Note 7.

#### Spectroscopy of trapped few-exciton states

The LIX emission spectra of pillar A for excitation powers ranging from 79 nW to  $\geq 500$  nW, two orders of magnitude weaker than the power used to record the results depicted in Fig. 1, are presented in Fig. 2a (see Supplementary Note 8 for additional spectra). At the lowest excitation power, the emission spectrum is found to be dominated by a single sharp line at 1.302 eV, labelled  $LIX_1$  in the figure. The spectral linewidth of this peak is 550  $\mu$ eV and it is broadened on the low-energy flank, most likely due to coupling to acoustic phonons<sup>35</sup>. The integrated intensity of  $LIX_1$  is plotted in Fig. 2b as a function of the excitation power. From the lowest excitation levels investigated, it increases linearly with power, as can be seen from the solid line on the figure that shows a fit to the data with  $I = I_0 \times P^a$  yielding  $a = 0.9 \pm 0.1$ . The dotted line on the figure shows our expectations for a linear power dependence. This observation, combined with the saturation and eventual decrease of the peak intensity at the highest excitation levels investigated, clearly identifies this peak as stemming from the recombination of a single IX in the local trapping potential, as is commonly observed in the emission characteristics of III–V quantum dots and other discrete quantum emitters<sup>36</sup>. As the excitation power is increased from the minimum of 79 nW, additional emission features emerge at higher energies, the most prominent of which is a pair of lines labelled  $LIX_{2A}$  and  $LIX_{2B}$  in Fig. 2. In contrast to  $LIX_1$ ,

$LIX_{2A/B}$  both exhibit a near quadratic power dependence ( $a_{2A} = 1.96 \pm 0.15$ ,  $a_{2B} = 1.57 \pm 0.12$ ) and each saturates and quenches at the highest pump powers investigated (see Fig. 2b). For excitation power in excess of  $\sim 300$  nW, additional manifolds of emission lines emerge, labelled  $LIX_{3A/B}$ ,  $LIX_4$  and  $LIX_5$  on Fig. 2a. The power dependence of each emergent set of lines clearly becomes successively more superlinear in behaviour— $LIX_{3A/B}$  have a power dependence that is very close to cubic ( $a_{3A} = 3.48 \pm 0.27$ ,  $a_{3B} = 3.6 \pm 0.7$ ),  $LIX_4$  close to quartic (see dotted lines on figure). These observations mirror previous findings for multi-exciton states in semiconductor quantum dots<sup>36,37</sup> and double quantum wells<sup>38</sup>. Since there were only a few data points before saturation for some of the peaks, we substantiate our particle number assignment by comparing ratios of intensities of two peaks to an independent capture model (see Supplementary Note 9). This method uses data from the entire available power range.

Figure 2c shows the emission energies of the various LIX peaks as extracted from multiple peak fitting. The energy of the individual  $LIX_i$  peaks is not significantly power dependent, beyond spectral wandering. This can be prominently seen in the  $LIX_1$  peak, which jitters by up to  $\sim 1$  meV between measurements. Similar spectral wandering has also been reported from discrete emitters in monolayer  $WSe_2$ , where it is commonly attributed to time-dependent fluctuations in the local electrostatic environment<sup>39,40</sup>. The mid-point of the biexciton  $LIX_2$  doublet is significantly blueshifted by  $(8.4 \pm 0.6)$  meV with respect to  $LIX_1$  and the two components are separated by  $\sim (1.2 \pm 0.5)$  meV.



**Fig. 3 Theoretical model for the observed biexciton blueshift and splitting.** **a** Total energy of two trapped IX composed of dipole–dipole repulsion and an attractive harmonic potential (dashed lines) for different confinement lengths. We assume  $\epsilon_r = 3$  and  $m_{e/h} = 0.8/0.45m_0$ . **b** Sketch of the interlayer biexciton complex and the coordinate conventions used in the main text. **c** Schematic illustration of biexciton states with different symmetries of spatial and spin wavefunction. **d** Binding energy (grey curves) and exchange splitting (red curves) of the trapped biexciton as a function of the confinement length of the harmonic potential. Positive-binding energies correspond to an increase in energy. The grey-shaded (red-shaded) energy range indicates the measured biexciton blueshift (splitting).

### Modelling interactions in multi-exciton complexes

In order to quantitatively understand the strong blueshift of the localized interlayer biexciton from the single exciton and the splitting of the biexciton into a doublet, we modelled the interaction of two IXs confined to a harmonic trapping potential, as characterised by a confinement lengthscale  $\ell = \sqrt{\hbar/m^*\Omega_0}$ . Here,  $m^*$  denotes the total effective mass of the exciton (sum of electron and hole mass) and  $\Omega_0$  is the angular frequency of an exciton in the harmonic potential. Figure 3a illustrates how we calculate the equilibrium separation  $\Delta\rho$  between two IXs by minimizing the sum of repulsive (dipolar) and attractive (harmonic) potential energies. For values of  $\ell \sim 3\text{--}4$  nm, reference to Fig. 3a shows that  $\Delta\rho \sim 5\text{--}6.5$  nm. We now continue to discuss the calculation of the direct and exchange Coulomb interaction energies for the  $LIX_2$  and  $LIX_1$  states. For this purpose, we modified the method outlined in ref. <sup>41</sup> (see Supplementary Note 10) and start with a Hamiltonian describing the biexciton complex of the following form:

$$H = H_0 + H_{\text{int}}, \quad (1)$$

where

$$H_0 = \sum_{i=1,2} \left[ -\frac{\hbar^2}{2m^*} \frac{1}{\rho_i} \frac{\partial}{\partial \rho_i} \left( \rho_i \frac{\partial}{\partial \rho_i} \right) - \frac{1}{4\pi\epsilon} \left( \frac{1}{\sqrt{\rho_i^2 + d^2}} + \frac{1}{\sqrt{(\rho_i + (-)^i \Delta\rho)^2 + d^2}} \right) + \frac{1}{2} m^* \Omega_0^2 \rho_i^2 \right] \quad (2)$$

describes non-interacting excitons exposed to a weak harmonic confinement potential and

$$H_{\text{int}} = \frac{e^2}{4\pi\epsilon} \left[ \frac{1}{|\rho_1 - \rho_2 + 2\Delta\rho|} + \frac{1}{|\rho_1 - \rho_2 - 2\Delta\rho|} - \frac{1}{\sqrt{(\rho_1 + \rho_2 + 2\Delta\rho)^2 + d^2}} - \frac{1}{\sqrt{(\rho_1 + \rho_2 - 2\Delta\rho)^2 + d^2}} \right] \quad (3)$$

represents the Coulomb interactions between the excitons. In Eqs. 2 and 3, the coordinates  $\rho_1$  and  $\rho_2$  are in-plane projections of the relative electron-hole coordinates of the interlayer excitons, as depicted in Fig. 3b, and  $\Delta\rho$  was introduced before. Moreover,  $d \approx 0.7$  nm is the interlayer separation of the HBL that determines the strength of the dipole–dipole repulsion and  $\epsilon = \epsilon_0\epsilon_r$  describes the effective dielectric screening by the surrounding vacuum (upper) and  $\text{SiO}_2$  (lower) media. We note that, in the simplest picture in

which we average the values for vacuum (upper cladding) and  $\text{SiO}_2$  (lower substrate), the effective dielectric constant would be  $\epsilon_r = (\epsilon_{\text{vac}} + \epsilon_{\text{SiO}_2})/2 \sim 2.5$ . For the effective masses  $m^*$ , we use  $m^* = 0.8m_0$  ( $0.45m_0$ ) for the  $\text{MoSe}_2$  electrons<sup>42</sup> ( $\text{WSe}_2$  holes<sup>43</sup>).

The indistinguishability of the two LIX composite bosons forming the biexciton implies that the total wavefunction must be symmetric with respect to IX exchange. This condition can only be satisfied when both spin and spatial parts of the two-exciton wavefunction are simultaneously symmetric or antisymmetric, respectively, as illustrated schematically in Fig. 3c. Thus, the spatial part of the two-IX (biexciton) wavefunction can take the form  $\Psi \sim \frac{1}{\sqrt{2}} [\Psi_{IX}(\rho_1)\Psi_{IX}(\rho_2) \pm \Psi_{IX}(\rho_2)\Psi_{IX}(\rho_1)]$ , giving rise to two, energetically distinct biexciton states separated by the exchange energy  $2J(\Delta\rho)$ . Here,  $J(\Delta\rho)$  is given by<sup>44</sup>

$$J(\Delta\rho) = \frac{1}{3} \int_{-\Delta\rho/\sqrt{2}}^{\Delta\rho/\sqrt{2}} dy \left| \Psi(x, y) \frac{\partial \Psi(x, y)}{\partial x} \right|_{x=0}, \quad (4)$$

where  $\Psi(x, y)$  is the ground state of Eq. 1 that has been transformed to the coordinate system  $x = (\rho_1 - \rho_2 - \Delta\rho)/\sqrt{2}$  and  $y = (\rho_1 + \rho_2)/\sqrt{2}$ . From this expression, we numerically calculate the exchange splitting to obtain the absolute energies of the two biexciton states:

$$E_{LIX2B/A} = 2E_{LIX1} + \frac{2d^2}{4\pi\epsilon(\Delta\rho)^3} + \frac{\hbar^2(\Delta\rho)^2}{4m^* \ell^4} \pm J(\Delta\rho) = 2E_{LIX1} + E_{\text{binding}} \pm J(\Delta\rho) \quad (5)$$

Here, a positive-binding energy refers to an increase in energy of the biexciton state compared to two isolated excitons. Representative results of our calculations are presented in Fig. 3d that shows the numerically evaluated biexciton binding energy and exchange splitting as a function of the effective confinement lengthscale  $\ell$ . The three curves presented on the figure correspond to effective dielectric constants  $\epsilon = 2\text{--}4$ . The experimentally observed blueshift of  $LIX_2$  of  $(8.4 \pm 0.6)$  meV is consistent with a confinement lengthscale in the range  $\ell = 2.8\text{--}3.3$  nm, with relatively weak sensitivity to the effective dielectric constant. We interpret the existence of two biexciton states, split by  $(1.2 \pm 0.5)$  meV, as reflecting the existence of two distinct spatial wavefunctions with even and odd symmetry with respect to IX exchange, as discussed above. The red curves presented in Fig. 3d show the calculated exchange splittings  $J(\ell)$  for the same range of effective dielectric constants<sup>45</sup>. The red-shaded region indicates the measured splitting of the biexciton peak. Remarkably, our model calculations simultaneously

reproduce both the observed biexciton binding energy and the exchange splitting for a dielectric constant in the range  $\epsilon \gtrsim 3$ , very close to the average dielectric constant of the environment  $\epsilon_{\text{vac-SiO}_2} = 2.5$ , and an effective confinement lengthscale of  $\ell \approx 3$  nm. Thus, we conclude that the strain-induced trapping potentials in the vicinity of the nanopillars give rise to nanometer-scale confinement traps in which the LIX interact via direct and exchange Coulomb interactions.

Figure 2c also shows that the triexciton (LIX<sub>3</sub>), quadexciton (LIX<sub>4</sub>) and quintexciton (LIX<sub>5</sub>) transition lines are even more strongly blueshifted from LIX<sub>1</sub>, as compared to LIX<sub>2</sub>. We measure blueshifts of  $(12.4 \pm 0.4)$  meV for LIX<sub>3</sub>,  $(15.5 \pm 0.6)$  meV for LIX<sub>4</sub> and  $(18.2 \pm 0.8)$  meV for LIX<sub>5</sub>. We extended our calculations for binding energies based on dipole–dipole repulsion in the harmonic trap to three to five excitons (see Supplementary Note 11). The total energy is minimized by maximizing the equilibrium spacing between the particles within the confinement potential. Thus, the IXs in LIX<sub>3</sub> (LIX<sub>4</sub>/LIX<sub>5</sub>) would be expected to be located at the corners of an equilateral triangle (square/regular pentagon) centered around the trap minimum. We find that independent of the system parameters (e.g. dipole moment  $d$  or confinement length  $\ell$ ) the blueshift of the LIX<sub>3</sub> (LIX<sub>4</sub>/LIX<sub>5</sub>) is expected to be about  $1.36 \times \Delta E_{\text{LIX}2}$  ( $1.92 \times \Delta E_{\text{LIX}2}/2.53 \times \Delta E_{\text{LIX}2}$ ), where  $\Delta E_{\text{LIX}2}$  is the localized biexciton blueshift. Remarkably, the experimentally observed shifts amount to  $(1.48 \pm 1.12) \times \Delta E_{\text{LIX}2}$  ( $(1.85 \pm 0.15) \times \Delta E_{\text{LIX}2}$ ,  $(2.17 \pm 0.18) \times \Delta E_{\text{LIX}2}$ ), respectively, in excellent agreement with this simple prediction.

In summary, we have directly probed interactions between a discrete number  $N_{\text{IX}} = 1\text{--}5$  of interlayer excitons moving within a localized trapping potential. Power-dependent measurements allow us to identify different few-body states and, moreover, the observed interactions are found to be all mutually in agreement with a localization lengthscale  $\ell \approx 3$  nm. We reproduce the observed blueshift of the biexciton by  $(8.4 \pm 0.6)$  meV as well as the observed biexciton fine structure with a splitting of  $(1.2 \pm 0.5)$  meV in a model including the dipolar and exchange interaction of two IX in a harmonic trapping potential. The relative energies of states with one to five trapped IXs are well captured by our model, which predicts maximal spacing of the IXs within the limitations of the trapping potential. The significant interaction energies observed in this paper suggest that strongly correlated multi-exciton phenomena, such as Wigner crystallization, may be realized in layered van der Waals heterostructures, opening up new avenues for nonlinear coherent optical control and spin-optonics with interlayer excitons.

After preparation and submission of the paper, we became aware of similar results by another group<sup>46</sup>.

## METHODS

### Sample fabrication

We fabricated the sample on a Si-[100] wafer with a 285 nm thick SiO<sub>2</sub> layer on top. We defined the pillar grid via electron beam lithography on a negative resist (AR-N 7520.07) and etched it into the substrate using F-based reactive ion etching. The pillars have a diameter and height of  $\sim 130$  nm and  $\sim 90$  nm, respectively. We exfoliated crystals of WSe<sub>2</sub> and MoSe<sub>2</sub> (hqgraphene.com) onto polydimethylsiloxane (PDMS, Gel-Pak) stamps, identified monolayers in an optical microscope via reflectivity contrast and then subsequently transferred the WSe<sub>2</sub> and MoSe<sub>2</sub> using a mask aligner in a cleanroom environment. Each transfer was followed by an annealing step in vacuum (200 °C, 30 min after the WSe<sub>2</sub> transfer; 150 °C, 20 min after the MoSe<sub>2</sub> transfer which completed the heterostructure). During assembly of the HBL, we took efforts to orientate the crystal axes of the two materials by aligning long crystalline edges of the monolayers.

## Optical spectroscopy measurements

Photoluminescence measurements were carried out in two different setups designed for low-temperature confocal microscopy. The data from Fig. 1 were acquired at a setup using a liquid-He flow cryostat at  $T = 10$  K and a HeNe laser ( $\lambda = 633$  nm) focused to a diameter of  $\sim 1$   $\mu\text{m}$ . In order to counteract thermal cycling effects (see Supplementary Note 12), the measurements presented in Fig. 2 were carried out in a setup equipped with a closed-cycle cryostat at  $T = 4$  K. The excitation laser used in this setup was at  $\lambda = 532$  nm and was defocused due to chromatic aberration in the used objective.

We note that the data presented in Figs. 1f and 2 were both recorded from pillar A, but following thermal cycling of the sample to room temperature. This procedure was typically found to result in a shift of the absolute energy of different groups of sharp-line emission features by approximately  $\pm 10$  meV. Nevertheless, following each cool-down, the generic form of the group of peaks was retained. Supplementary Figure 5 shows power-dependent  $\mu\text{PL}$  spectra recorded from pillar A (from the same measurement as the data presented in Fig. 1f), illustrating how the single sharp emission feature is observed close to 1.292 eV at the lowest excitation power investigated, with additional peaks emerging in the range  $\sim 5\text{--}30$  meV to higher energy as  $P_{\text{ex}}$  increases.

## Data analysis

The emission energies shown in Fig. 2c were extracted from Gaussian fits to the PL spectra. In some power regimes, the large peak overlap combined with the low signal-to-noise ratio hindered proper fitting of the data. For this reason, the PL intensities presented in Fig. 2b were determined by integrating the PL signal in an interval of 0.12 meV around the respective center energies. The only exception is the LIX<sub>1</sub> peak for which fitting was possible over the whole power range due to its spectral isolation. The data points for LIX<sub>3A</sub> and LIX<sub>3B</sub> in Fig. 2b initially overlapped. Thus, the data for LIX<sub>3A</sub> was slightly offset for better visibility.

## DATA AVAILABILITY

The data that support the findings of this study are available from the corresponding author upon reasonable request.

Received: 11 February 2020; Accepted: 18 March 2020;

Published online: 12 May 2020

## REFERENCES

- Rivera, P. et al. Observation of long-lived interlayer excitons in monolayer MoSe<sub>2</sub>WSe<sub>2</sub> heterostructures. *Nat. Commun.* **6**, 6242 (2015).
- Wang, Y., Wang, Z., Yao, W., Liu, G.-B. & Yu, H. Interlayer coupling in commensurate and incommensurate bilayer structures of transition-metal dichalcogenides. *Phys. Rev. B* **95**, 115429 (2017).
- Nagler, P. et al. Interlayer exciton dynamics in a dichalcogenide monolayer heterostructure. *2D Mater.* **4**, 025112 (2017).
- Rivera, P. et al. Interlayer valley excitons in heterobilayers of transition metal dichalcogenides. *Nat. Nanotechnol.* **13**, 1004–1015 (2018).
- Zhang, C. et al. Interlayer couplings, Moiré patterns, and 2D electronic superlattices in MoS<sub>2</sub>/WSe<sub>2</sub> hetero-bilayers. *Sci. Adv.* **3**, e1601459 (2017).
- Seyler, K. L. et al. Signatures of moiré-trapped valley excitons in MoSe<sub>2</sub>/WSe<sub>2</sub> heterobilayers. *Nature* **567**, 66–70 (2019).
- Tran, K. et al. Evidence for moiré excitons in van der Waals heterostructures. *Nature* **567**, 71–75 (2019).
- Wang, Z. et al. Evidence of high-temperature exciton condensation in two-dimensional atomic double layers. *Nature* **574**, 76–80 (2019).
- Sigl, L. et al. Condensation signatures of photogenerated interlayer excitons in a van der Waals heterostack. Preprint at <https://arxiv.org/abs/2001.07567> (2020).
- Miller, B. et al. Long-lived direct and indirect interlayer excitons in van der waals heterostructures. *Nano Lett.* **17**, 5229–5237 (2017).
- Kiemle, J. et al. Hybridized indirect excitons in MoS<sub>2</sub>/WS<sub>2</sub> heterobilayers. *Phys. Rev. B* **101**, <https://doi.org/10.1103/PhysRevB.101.121404> (2020).
- Jauregui, L. A. et al. Electrical control of interlayer exciton dynamics in atomically thin heterostructures. *Science* **366**, 870–875 (2019).
- He, Y. et al. Strain-induced electronic structure changes in stacked van der waals heterostructures. *Nano Lett.* **16**, 3314–3320 (2016).

14. Branny, A., Kumar, S., Proux, R. & Gerardot, B. D. Deterministic strain-induced arrays of quantum emitters in a two-dimensional semiconductor. *Nat. Commun.* **8**, 15053 (2017).
15. Palacios-Berraquero, C. et al. Large-scale quantum-emitter arrays in atomically thin semiconductors. *Nat. Commun.* **8**, 15093 (2017).
16. Branny, A. et al. Discrete quantum dot like emitters in monolayer MoSe<sub>2</sub>: Spatial mapping, magneto-optics, and charge tuning. *Appl. Phys. Lett.* **108**, 142101 (2016).
17. Jones, A. M. et al. Optical generation of excitonic valley coherence in monolayer WSe<sub>2</sub>. *Nat. Nanotechnol.* **8**, 634–638 (2013).
18. Ross, J. S. et al. Electrical control of neutral and charged excitons in a monolayer semiconductor. *Nat. Commun.* **4**, 1474 (2013).
19. Wang, G. et al. In-plane propagation of light in transition metal dichalcogenide monolayers: optical selection rules. *Phys. Rev. Lett.* **119**, 047401 (2017).
20. Zhou, Y. et al. Probing dark excitons in atomically thin semiconductors via near-field coupling to surface plasmon polaritons. *Nat. Nanotechnol.* **12**, 856–860 (2017).
21. Zhang, X.-X. et al. Magnetic brightening and control of dark excitons in monolayer WSe<sub>2</sub>. *Nat. Nanotechnol.* **12**, 883–888 (2017).
22. Chen, S.-Y., Goldstein, T., Taniguchi, T., Watanabe, K. & Yan, J. Coulomb-bound four- and five-particle intervalley states in an atomically-thin semiconductor. *Nat. Commun.* **9**, 3717 (2018).
23. Ye, Z. et al. Efficient generation of neutral and charged biexcitons in encapsulated WSe<sub>2</sub> monolayers. *Nat. Commun.* **9**, 3718 (2018).
24. Barbone, M. et al. Charge-tuneable biexciton complexes in monolayer WSe<sub>2</sub>. *Nat. Commun.* **9**, 3721 (2018).
25. Li, Z. et al. Revealing the biexciton and trion-exciton complexes in BN encapsulated WSe<sub>2</sub>. *Nat. Commun.* **9**, 3719 (2018).
26. Stevens, C. E. et al. Biexcitons in monolayer transition metal dichalcogenides tuned by magnetic fields. *Nat. Commun.* **9**, 3720 (2018).
27. Tongay, S. et al. Defects activated photoluminescence in two-dimensional semiconductors: interplay between bound, charged and free excitons. *Sci. Rep.* **3**, 2657 (2013).
28. Zhang, S. et al. Defect structure of localized excitons in a WSe<sub>2</sub> monolayer. *Phys. Rev. Lett.* **119**, 046101 (2017).
29. Ceballos, F., Bellus, M. Z., Chiu, H.-Y. & Zhao, H. Ultrafast charge separation and indirect exciton formation in a MoS<sub>2</sub>–MoSe<sub>2</sub> van der Waals heterostructure. *ACS Nano* **8**, 12717–12724 (2014).
30. Ceballos, F., Bellus, M. Z., Chiu, H. Y. & Zhao, H. Probing charge transfer excitons in a MoSe<sub>2</sub>–WS<sub>2</sub> van der Waals heterostructure. *Nanoscale* **7**, 17523–17528 (2015).
31. Rigosi, A. F., Hill, H. M., Li, Y., Chernikov, A. & Heinz, T. F. Probing interlayer interactions in transition metal dichalcogenide heterostructures by optical spectroscopy: MoS<sub>2</sub>/WS<sub>2</sub> and MoSe<sub>2</sub>/WSe<sub>2</sub>. *Nano Lett.* **15**, 5033–5038 (2015).
32. Laikhtman, B. & Rapaport, R. Exciton correlations in coupled quantum wells and their luminescence blue shift. *Phys. Rev. B* **80**, 195313 (2009).
33. Amani, M. et al. Near-unity photoluminescence quantum yield in MoS<sub>2</sub>. *Science* **350**, 1065–1068 (2015).
34. Li, H. et al. Optoelectronic crystal of artificial atoms in strain-textured molybdenum disulphide. *Nat. Commun.* **6**, 7381 (2015).
35. Refaely-Abramson, S., Qiu, D. Y., Louie, S. G. & Neaton, J. B. Defect-induced modification of low-lying excitons and valley selectivity in monolayer transition metal dichalcogenides. *Phys. Rev. Lett.* **121**, 167402 (2018).
36. Zrenner, A. A close look on single quantum dots. *J. Chem. Phys.* **112**, 7790–7798 (2000).
37. Finley, J. J. et al. Charged and neutral exciton complexes in individual self-assembled In(Ga)As quantum dots. *Phys. Rev. B* **63**, 73307 (2001).
38. Schinner, G. J. et al. Confinement and interaction of single indirect excitons in a voltage-controlled trap formed inside double InGaAs quantum wells. *Phys. Rev. Lett.* **110**, 127403 (2013).
39. Iff, O. et al. Substrate engineering for high-quality emission of free and localized excitons from atomic monolayers in hybrid architectures. *Optica* **4**, 669 (2017).
40. Srivastava, A. et al. Optically active quantum dots in monolayer WSe<sub>2</sub>. *Nat. Nanotechnol.* **10**, 491–496 (2015).
41. Bondarev, I. V. & Vladimirova, M. R. Complexes of dipolar excitons in layered quasi-two-dimensional nanostructures. *Phys. Rev. B* **97**, 165419 (2018).
42. Larentis, S. et al. Large effective mass and interaction-enhanced Zeeman splitting of K-valley electrons in MoSe<sub>2</sub>. *Phys. Rev. B* **97**, 201407 (2018).
43. Fallahzad, B. et al. Shubnikov-de Haas oscillations of high-mobility holes in monolayer and bilayer: Landau level degeneracy, effective mass, and negative comp. *Phys. Rev. Lett.* **116**, 086601 (2016).
44. Bondarev, I. V. Asymptotic exchange coupling of quasi-one-dimensional excitons in carbon nanotubes. *Phys. Rev. B* **83**, 153409 (2011).
45. Kylänpää, I. & Komsa, H.-P. Binding energies of exciton complexes in transition metal dichalcogenide monolayers and effect of dielectric environment. *Phys. Rev. B* **92**, 205418 (2015).
46. Li, W., Lu, X., Dubey, S., Devenica, L. & Srivastava, A. Dipolar interactions between field-tuneable, localized emitters in van der Waals heterostructures. *Nat. Mater.* <https://doi.org/10.1038/s41563-020-0661-4> (2020).

## ACKNOWLEDGEMENTS

We gratefully acknowledge funding from the International Max Planck Research School for Quantum Science and Technology (IMPRS-QST), the DFG Clusters of Excellence MCQST, e-Conversion and NIM, DFG Project FI 947/5-1 SQAM, the European Union's Horizon 2020 research and innovation programme under grant agreement No. 820423 (S2QUIP), the BMBF *Verbundprojekt* QLink-X, the German Federal Ministry of Education and Research via the funding program Photonics Research Germany (contract number 13N14846) and the Alexander von Humboldt Foundation. K.M. acknowledges support from the Bavarian Academy of Sciences and Humanities. In addition, we thank Richard Schmidt and his team for very helpful discussions.

## AUTHOR CONTRIBUTIONS

M.K., B.D.G., K.M. and J.J.F. conceived and designed the experiments. M.K. and J.G. prepared the sample. M.K., M.B.-G., J.G. and M.M. performed the experiments. M.K. analyzed the data. J.K. modelled the exchange interaction. M.K., K.M. and J.J.F. wrote the paper with input from all authors.

## COMPETING INTERESTS

The authors declare no competing interests.

## ADDITIONAL INFORMATION

**Supplementary information** is available for this paper at <https://doi.org/10.1038/s41699-020-0141-3>.

**Correspondence** and requests for materials should be addressed to M.K. or J.J.F.

**Reprints and permission information** is available at <http://www.nature.com/reprints>

**Publisher's note** Springer Nature remains neutral with regard to jurisdictional claims in published maps and institutional affiliations.



**Open Access** This article is licensed under a Creative Commons Attribution 4.0 International License, which permits use, sharing, adaptation, distribution and reproduction in any medium or format, as long as you give appropriate credit to the original author(s) and the source, provide a link to the Creative Commons license, and indicate if changes were made. The images or other third party material in this article are included in the article's Creative Commons license, unless indicated otherwise in a credit line to the material. If material is not included in the article's Creative Commons license and your intended use is not permitted by statutory regulation or exceeds the permitted use, you will need to obtain permission directly from the copyright holder. To view a copy of this license, visit <http://creativecommons.org/licenses/by/4.0/>.

© The Author(s) 2020