

# Supplementary material for „Differences in the QBO response to stratospheric aerosol modification depending on injection strategy and species“

Henning Franke<sup>1,2</sup>, Ulrike Niemeier<sup>1</sup>, Daniele Visioni<sup>3</sup>

<sup>1</sup> Max Planck Institute for Meteorology, Bundesstr. 53, 20146Hamburg, Germany

<sup>2</sup> International Max Planck Research School on Earth System Modelling, Bundesstr. 53, 20146 Hamburg, Germany

<sup>3</sup> Sibley School for Mechanical and Aerospace Engineering, Cornell University, Ithaca, NY, USA

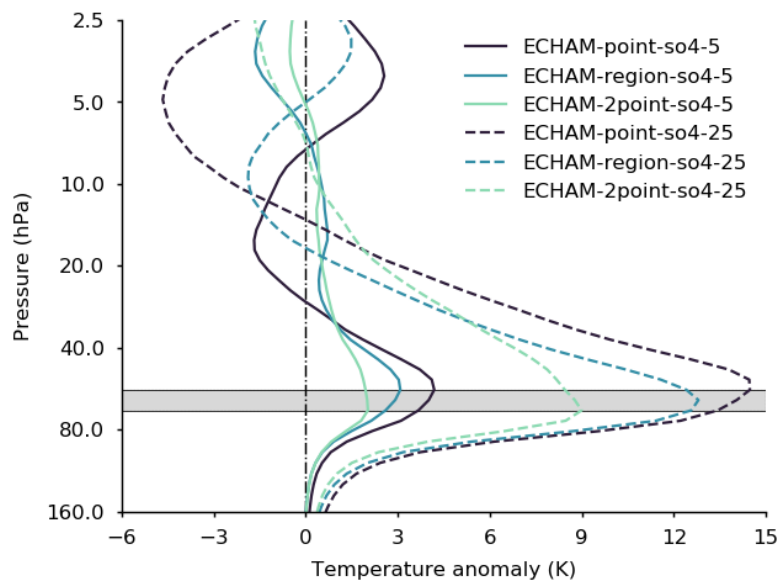


Figure S1: As Figure 6, but for the corresponding injection of AM-SO<sub>4</sub>.

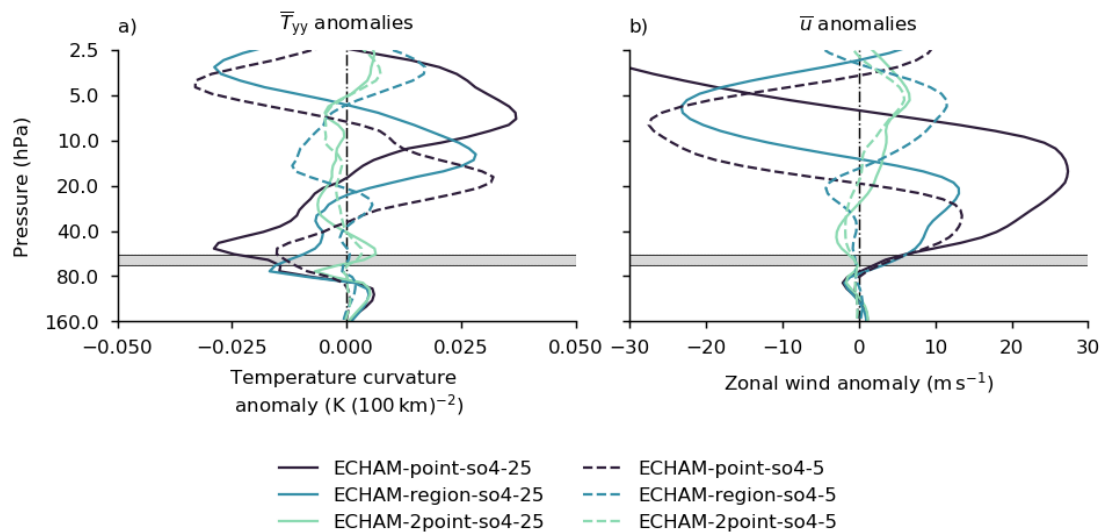


Figure S2: As Figure 7, but for the corresponding injection of SO<sub>2</sub>.

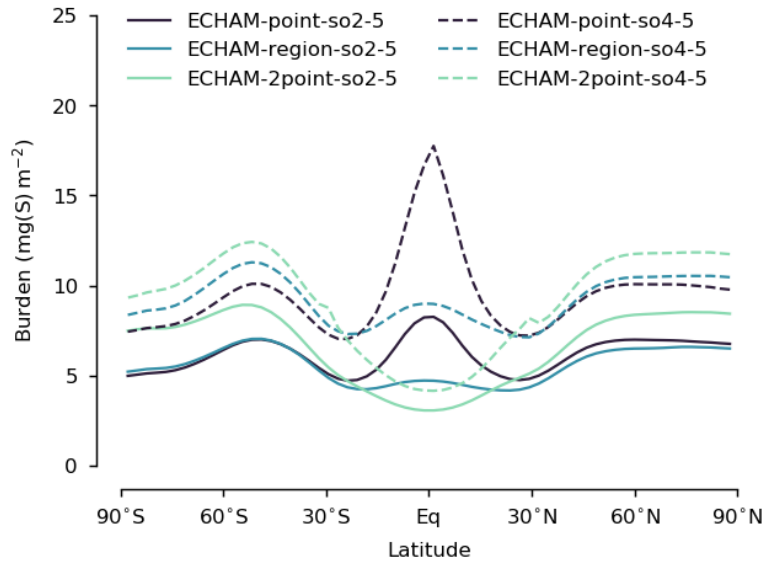


Figure S3: As Figure 8, but for the corresponding injection with an injection rate of  $5 \text{ Tg(S)yr}^{-1}$ .

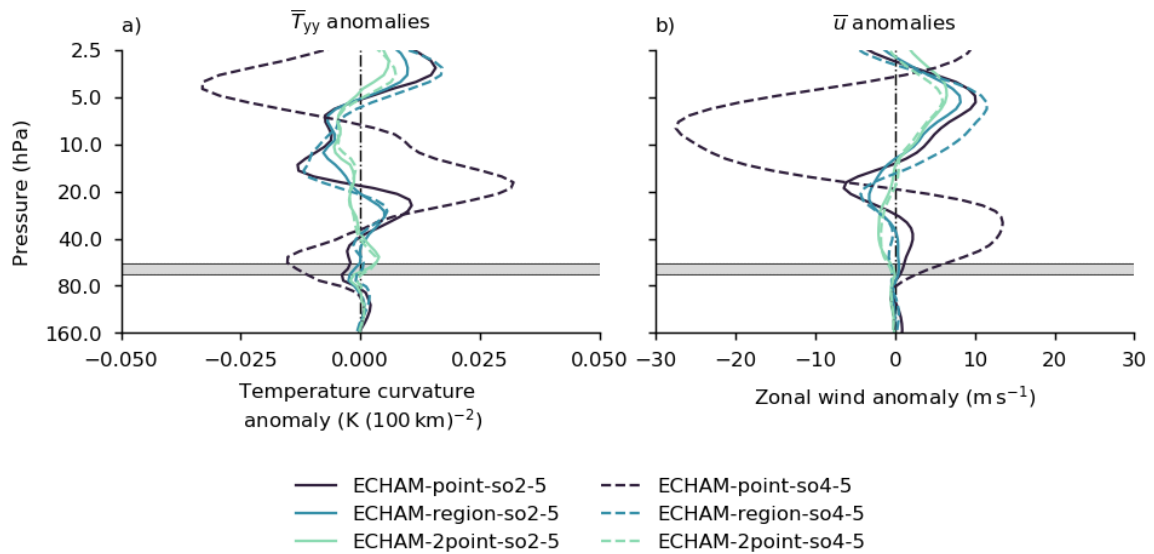


Figure S4: As Figure 9, but for the corresponding injection with an injection rate of  $5 \text{ Tg(S)yr}^{-1}$ .

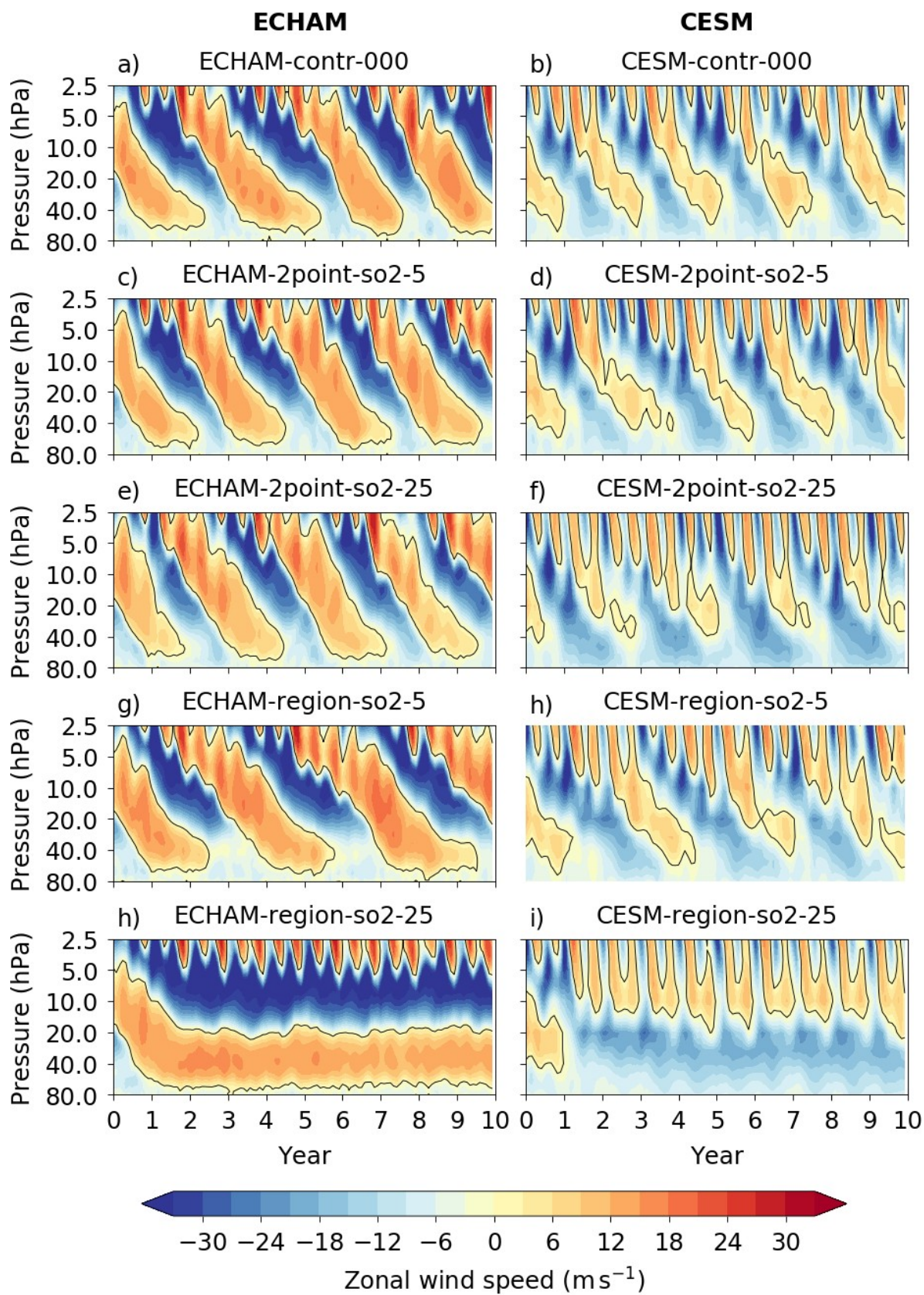


Figure S5: As Figure 12, but for the corresponding injection of SO<sub>2</sub>.

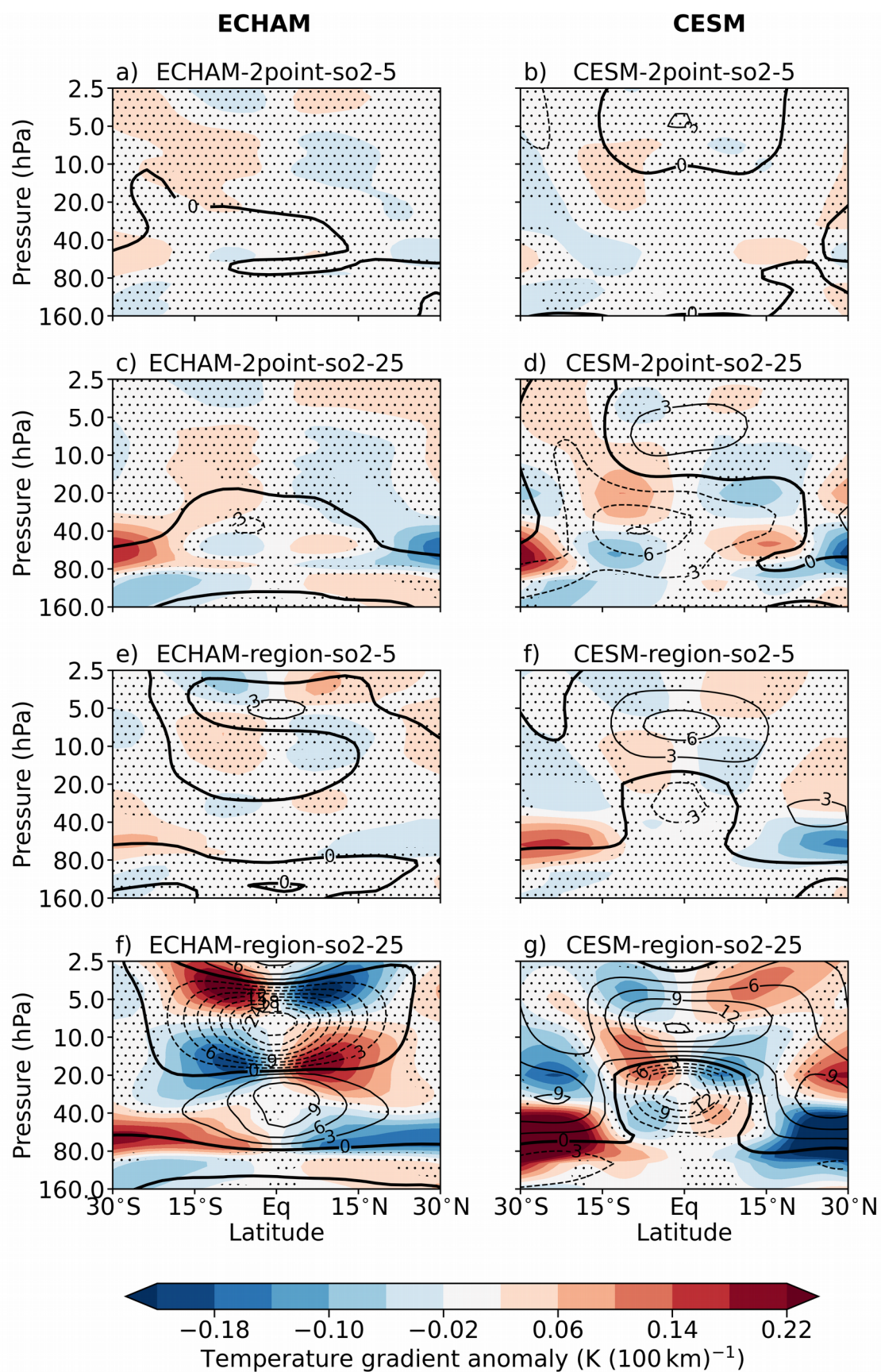


Figure S6: As Figure 13, but for the corresponding injection of  $\text{SO}_2$ .

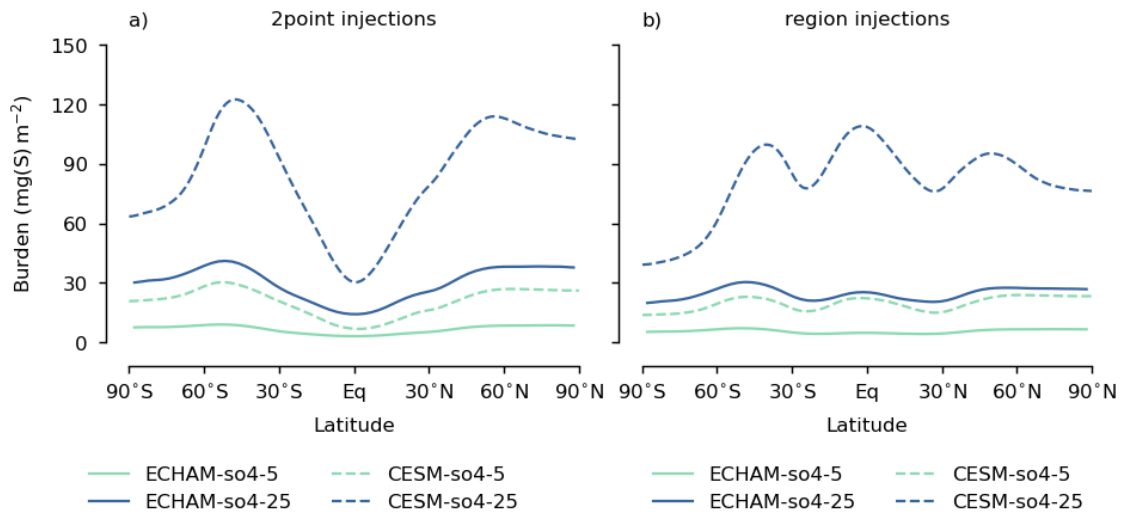


Figure S7: As Figure 14, but for the corresponding injection of SO<sub>2</sub>.