



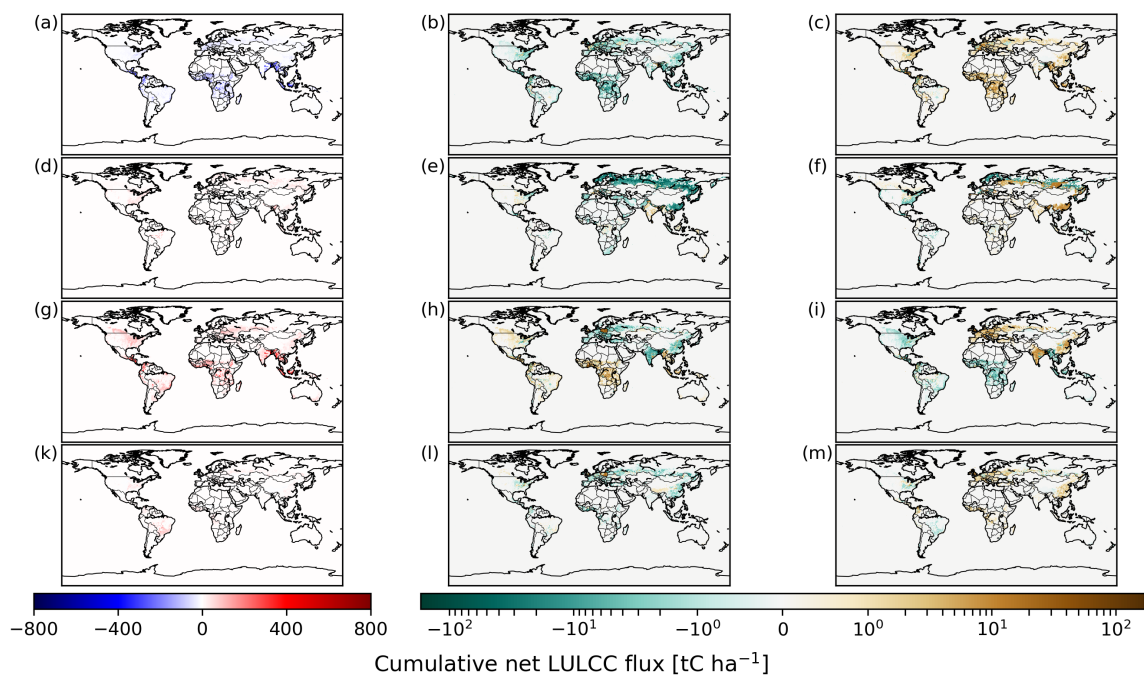
*Supplement of*

## **Bookkeeping estimates of the net land-use change flux – a sensitivity study with the CMIP6 land-use dataset**

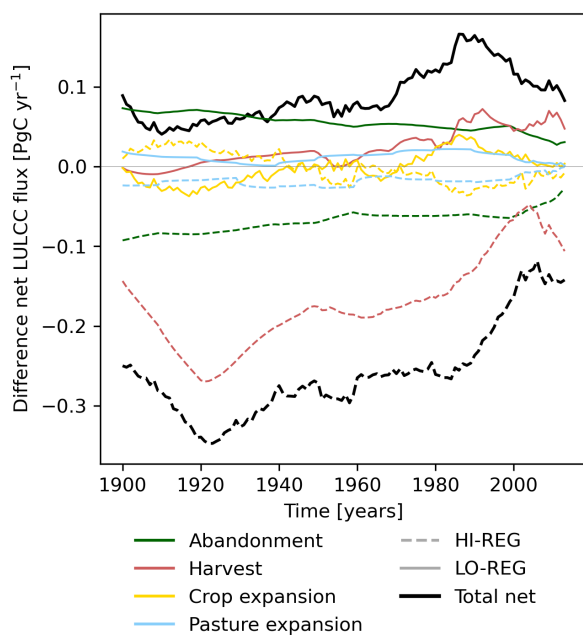
**Kerstin Hartung et al.**

*Correspondence to:* Kerstin Hartung (kerstin.hartung@dlr.de)

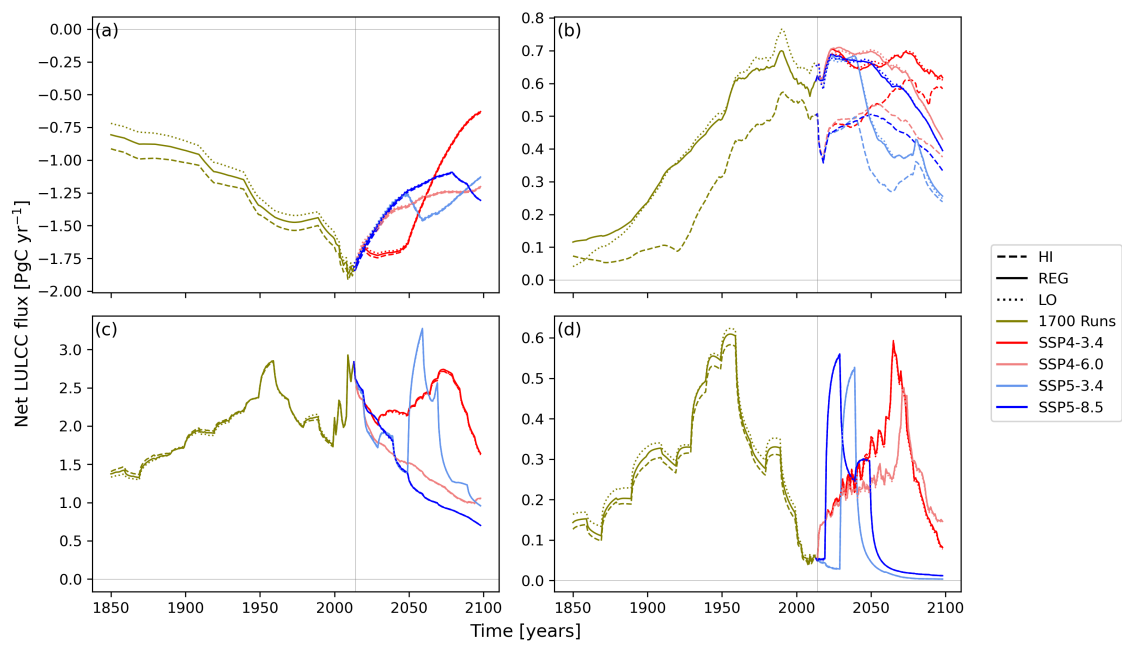
The copyright of individual parts of the supplement might differ from the article licence.



**Figure S1.** As Fig. 5 but for four LULCC activities abandonment (a-c), harvest (d-f), crop (g-i) and pasture (k-m) in the four rows. LULCC scenarios are aggregated in columns: REG1700 in the first column (a, d, g, k), HI1700-REG1700 in the second column (b, e, h, l) and LO1700-REG1700 in the third column (c, f, i, m).



**Figure S2.** Timeseries of differences of the global annual net LULCC flux for the period 1900–2014 from historical simulations. Shown are the differences HI1700-REG1700 and LO1700-REG1700 for the total net LULCC flux and the contribution from each of the four LULCC activities.



**Figure S3.** As Fig. 1 but showing global annual net emissions for the four LULCC activities (a) abandonment, (b) harvest, (c) crop expansion and (d) pasture expansion. Note the different y-axis ranges.