



Supplement of

Bookkeeping estimates of the net land-use change flux – a sensitivity study with the CMIP6 land-use dataset

Kerstin Hartung et al.

Correspondence to: Kerstin Hartung (kerstin.hartung@dlr.de)

The copyright of individual parts of the supplement might differ from the article licence.

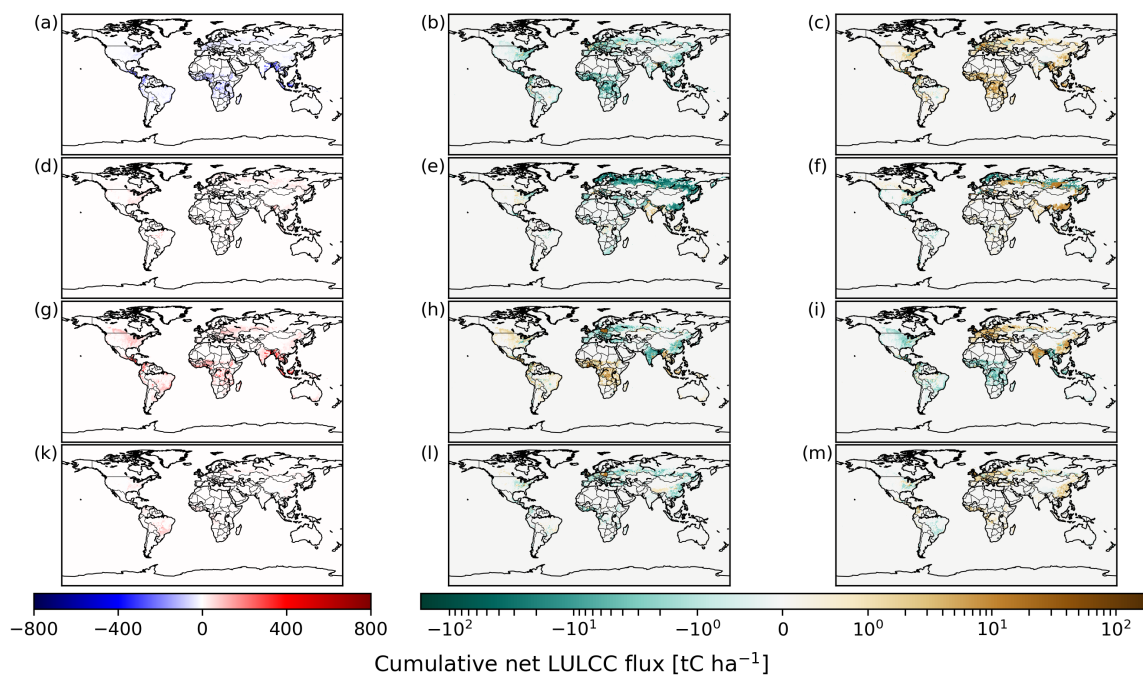


Figure S1. As Fig. 5 but for four LULCC activities abandonment (a-c), harvest (d-f), crop (g-i) and pasture (k-m) in the four rows. LULCC scenarios are aggregated in columns: REG1700 in the first column (a, d, g, k), HI1700-REG1700 in the second column (b, e, h, l) and LO1700-REG1700 in the third column (c, f, i, m).

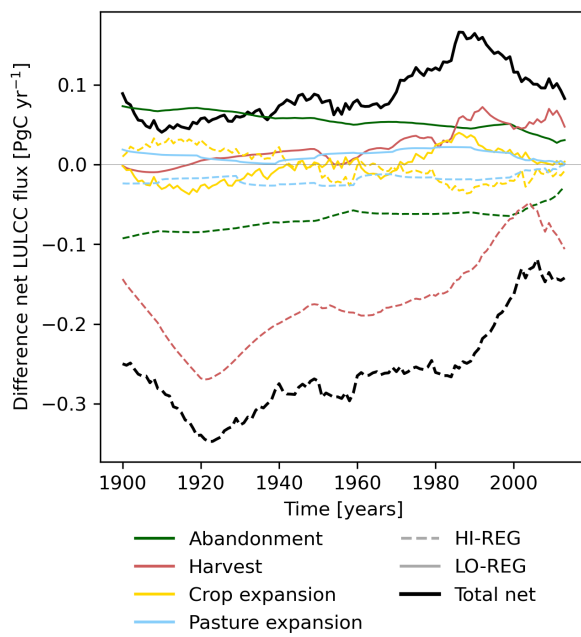


Figure S2. Timeseries of differences of the global annual net LULCC flux for the period 1900–2014 from historical simulations. Shown are the differences HI1700-REG1700 and LO1700-REG1700 for the total net LULCC flux and the contribution from each of the four LULCC activities.

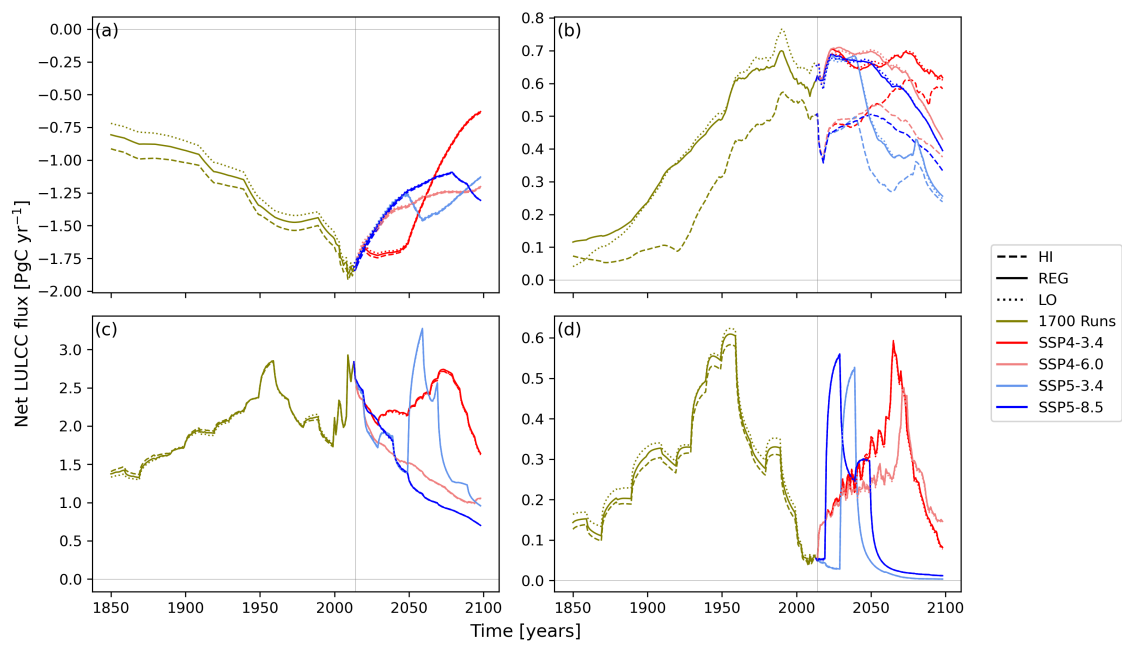


Figure S3. As Fig. 1 but showing global annual net emissions for the four LULCC activities (a) abandonment, (b) harvest, (c) crop expansion and (d) pasture expansion. Note the different y-axis ranges.