



Process-based analysis of terrestrial carbon flux predictability

István Dunkl^{1,2}, Aaron Spring¹, Pierre Friedlingstein³, and Victor Brovkin^{1,4}

¹Max Planck Institute for Meteorology, Hamburg, Germany

²International Max Planck Research School on Earth System Modelling, Hamburg, Germany

³College of Engineering, Mathematics and Physical Sciences, University of Exeter, Exeter, UK

⁴Center for Earth System Research and Sustainability, University of Hamburg, Germany

Correspondence: István Dunkl (istvan.dunkl@mpimet.mpg.de)

Abstract. Despite efforts to decrease the discrepancy between simulated and observed terrestrial carbon fluxes, the uncertainty in trends and patterns of the land carbon fluxes remains high. This difficulty raises the question to what extent the terrestrial carbon cycle is predictable, and which processes explain the predictability. Here, the perfect model approach is used to assess the potential predictability of net primary production (NPP_{pred}) and heterotrophic respiration (Rh_{pred}) by using ensemble simulations conducted with the Max-Planck-Institute Earth System Model. In order to assess the role of local carbon flux predictability (CF_{pred}) on the predictability of the global carbon cycle, we suggest a new predictability metric weighted by the amplitude of the flux anomalies. Regression analysis is used to determine the contribution of the predictability of different environmental drivers to NPP_{pred} and Rh_{pred} (soil moisture, air temperature and radiation for NPP and soil organic carbon, air temperature and precipitation for Rh). NPP_{pred} is driven to 62 and 30% by the predictability of soil moisture and temperature, respectively. Rh_{pred} is driven to 52 and 27% by the predictability of soil organic carbon temperature, respectively. The decomposition of predictability shows that the relatively high Rh_{pred} compared to NPP_{pred} is due to the generally high predictability of soil organic carbon. The seasonality in NPP_{pred} and Rh_{pred} patterns can be explained by the change in limiting factors over the wet and dry months. Consequently, CF_{pred} is controlled by the predictability of the currently limiting environmental factor. Differences in CF_{pred} between ensemble simulations can be attributed to the occurrence of wet and dry years, which influences the predictability of soil moisture and temperature. This variability of predictability is caused by the state dependency of ecosystem processes. Our results reveal the crucial regions and ecosystem processes to be considered when initializing a carbon prediction system.

1 Introduction

As a net sink for atmospheric CO_2 , terrestrial ecosystems absorb around one third of the anthropogenic emissions (Friedlingstein et al., 2020). Carbon fluxes between the land-atmosphere interface have a high interannual variability with a standard deviation (SD) of 0.7 PgC yr^{-1} (Sitch et al., 2015) and cause the majority of the atmospheric CO_2 fluctuations (Ciais et al.,



2014; Spring et al., 2020). The high variability of terrestrial carbon fluxes can be attributed to the sensitivity of land surface processes to climatic drivers, however the relative importance of temperature and precipitation are still debated (Jones et al., 2001; Beer et al., 2010; Bloom et al., 2016; Fang et al., 2017; Jung et al., 2017; Bastos et al., 2018). In accordance with the limited understanding of carbon flux variability, models are not able to fully reproduce the spatiotemporal patterns of the terrestrial carbon cycle. This is reflected in the poor representation of soil organic carbon (SOC) in Earth System Models (ESM), the inability to adequately model gross primary production (GPP) from eddy covariance flux tower sites (Luo et al., 2015) and the difficulty of emission reduction detection in the face of internal variability (Spring et al., 2020). In order to produce more realistic predictions, efforts in model development have been directed towards using observations to constrain model parameters (Bloom et al., 2016; Mystakidis et al., 2016; Chadburn et al., 2017; Tziolas et al., 2020), and to refine model structure to incorporating more processes and interactions (Krull et al., 2003; Stockmann et al., 2013; Xu et al., 2014; Luo et al., 2016). While efforts in model development are continuing to narrow the gap between the simulated and observed carbon cycle, the lack of progress in improving the predictive ability of the models raises the question to what extent the terrestrial carbon cycle is predictable at all (Luo et al., 2015).

Séférian et al. (2018) used the perfect model framework to assess the potential predictability of terrestrial carbon fluxes (*CFpred*) at annual time-steps. They estimated the predictive horizon of terrestrial carbon fluxes to be two years globally and up to three years in northern latitudes. The high variability of predictability among different initializations suggests a state-dependence of *CFpred*, but no further mechanisms of predictability were investigated here. Multiple processes can be considered as the sources of *CFpred*. Due to the high sensitivity of the terrestrial carbon cycle to climate, climate predictability provides carbon fluxes with a basic prediction horizon. The main contributor to climate predictability is El Niño-Southern Oscillation (ENSO), which explains over 40% of the variability in global net primary production (NPP) (Bastos et al., 2013) and a large fraction of *CFpred* (Zeng et al., 2008). El Niño events are associated with high temperatures and low precipitation in the tropics which cause a reduction of the land carbon sink of 1.8 PgC yr^{-1} per $1 \text{ }^\circ\text{C}$ sea surface temperature (SST) anomaly in the Niño 3 region (Jones et al., 2001). This strong relationship between SST and the carbon cycle was used by Betts et al. (2016) to predict annual CO_2 growth. Their statistical model uses the annual average SST in the Niño 3.4 region to successfully predict the CO_2 rise with a precision of 0.53 ppm yr^{-1} . Furthermore, Spring and Ilyina (2020) showed that ESM-based initialized predictions can predict atmospheric CO_2 variations up to three years in advance.

However, *CFpred* is extended beyond the predictability of climate by slowly varying land surface processes that filter out the high-frequency noise of the climate signal. As the most prominent process, soil moisture memory is known to increase the predictability of temperature (*TEMPpred*) and precipitation (*PRECIPpred*) by several months (Chikamoto et al., 2015), but memory can also be attributed to phenology (Weiss et al., 2014) and SOC (Lovenduski et al., 2019). Besides the slowly changing land state variables, the memory is further extended through land-atmosphere coupling which propagates soil anomalies back to the atmosphere by energy and water fluxes (Bellucci et al., 2015).

Previous studies that focus on the mechanisms of *CFpred* investigated the role of various land processes and how they contribute to the overall *CFpred*. Weiss et al. (2014) found increased predictability of evaporation and to some extent temperature due to a dynamic simulation of leaf area index (LAI), which would also extend *CFpred*. The role of land surface initialization



on *CFpred* was studied by Zeng et al. (2008) and Lovenduski et al. (2019). Zeng et al. (2008) isolated the fraction of *CFpred* which is based solely on initial conditions and compare fully coupled dynamic simulations with statistical models. Lovenduski et al. (2019) quantified the degree to which *CFpred* improves when the land surface is initialized. They also assessed the relative importance of the individual land surface processes for the variability of terrestrial carbon fluxes and found that *CFpred* depends on the correct initialization of vegetation carbon biomass and soil moisture rather than temperature. These studies have shown the significant advantage of dynamic forecasting systems, suggesting *CFpred* extends beyond the predictability of the forcing variables due to land surface processes. However, these studies were not focused on contributions of individual drivers of carbon fluxes to *CFpred* or on processes responsible for maintaining *CFpred*.

Here, we use perfect model simulations conducted with an ESM to investigate the structure and mechanisms of the *CFpred*. Initialized ensemble simulations are created from a range of ENSO states. Analysed are the carbon fluxes with the highest contribution to the interannual variability of the land-atmosphere CO₂ exchange. These are NPP with an interannual SD of 0.99 PgCyr⁻¹ and heterotrophic respiration (Rh) with an SD of 0.29 PgCyr⁻¹ (Wang et al., 2016). The potential predictability of NPP (*NPPpred*) and Rh (*Rhpred*) is derived from rate of divergence within the ensemble members. We evaluate the predictability data to find how *NPPpred* and *Rhpred* differ in their spatiotemporal patterns and variability. Lastly, we identify the key drivers of NPP and Rh and determine their contribution to *NPPpred* and *Rhpred*. We use this framework to explain the attained spatiotemporal patterns of *CFpred* and identify the underlying land system processes producing these patterns.

2 Methods

2.1 Earth system model

This study is based on the output of the MPI-ESM version 1.2 developed for the Coupled Model Intercomparison Project 6 (Mauritsen et al., 2019). The model runs fully coupled in the LR configuration that uses the atmospheric component ECHAM 6.3.05 with a T63 spatial truncation and 47 atmospheric layers. The atmospheric model is directly coupled with the land model JSBACH 3.20 and uses an interactive carbon cycle, which means atmospheric CO₂ reacts to land and ocean carbon fluxes.

2.2 Perfect model framework

The potential *CFpred* is derived by using the perfect model framework. Ensemble simulations are initialized along a control run with each member of the ensemble having slightly perturbed initial conditions. The predictability is then derived by analysing the divergence of the ensemble simulations. This method assumes (a) perfect model physics which are able to reproduce the full spectrum of natural variability and (b) perfect knowledge of the modelled system and a model whose representation of the real world is “perfect enough” (Boer et al., 2013).

The control simulation used in this study is a 1000-year unforced simulation with a preindustrial CO₂ concentration of 285 ppm. A total of 35 10-member ensemble simulations are initialized, each starting in January with a run time of two years. The unperturbed simulation of the control run is added to the ensembles as the 11th member. Initialization dates are selected



manually in order to attain a diversity of ENSO states. The selected dates are grouped into three categories: El Niño, La Niña
90 or ENSO-neutral.

The potential predictability is assessed by using a correlation-based and a distance-based metric. The Anomaly Correlation Coefficient (ACC) is a commonly used metric to measure forecast skill (Jolliffe and Stephenson, 2012) which calculates the correlation between predicted and observed anomalies as

$$ACC_{j,t} = \frac{cov(f,o)}{\sigma_f \cdot \sigma_o}, \quad (1)$$

95 where j and t are grid cell and lead time, cov is the covariance and f and o the forecast and validation anomalies. Similar to (Collins and Sinha, 2003; Becker et al., 2013), the noise in the ACC is reduced by averaging over several ACC values. This is achieved by taking all eleven ensemble members as the verification in turn, while the mean of the remaining ensemble members serves as the forecast. Although the ACC is an intuitive metric which is calculated from all initializations and thus provides a robust estimation of the predictability, it does not allow to investigate the variability of predictability between initializations.
100 The comparison of predictabilities between initialization is achieved by the use of a distance based metric which is computed for all initializations individually. The distance based metric used here is the normalized ensemble variance ($V(t)$) based on the method proposed by Griffies and Bryan (1997). Predictability is defined as the ensemble variance normalized by the variance of the climatology as

$$V(t) = \frac{\frac{1}{M} \sum_{i=1}^M [X_i(t) - \bar{X}(t)]^2}{\sigma^2}, \quad (2)$$

105 where t is lead time, M the number of ensemble members, X_i the i th member, \bar{X} the ensemble mean and σ^2 the variance of the control simulation. In this study, the complement of the normalized ensemble variance is used as: $V_c(t) = 1 - V(t)$. The resulting metric indicates perfect predictability at a value of 1, and an ensemble spread that exceeds the climatological variance for values below zero.

While ACC and V_c allow the estimation of regional predictability, these metrics are not suitable to evaluate the impact of
110 local predictabilities on the predictability of the global carbon cycle. This is due to the disregard of the flux amplitude in the calculation of the metrics. Both of the metrics are prone to producing above average predictabilities in regions where carbon fluxes are generally low or even close to zero, such as subtropical deserts. Here we propose a weighted predictability metric that allows to assess local predictabilities with regard of their impact on the predictability of the global carbon cycle. V_c is weighted by using an approach similar to risk assessment, which is calculated as the product of likelihood and impact. Here a
115 weighted predictability wV_c is calculated by multiplying V_c with the absolute carbon flux anomaly of the ensemble mean:

$$wV_c(t) = V_c(t) \times |\Delta FLUX(t)|. \quad (3)$$

2.3 Decomposition of predictability

In order to investigate the drivers of CF_{pred} , the V_c of NPP and Rh are decomposed into components contributing to the predictability of these fluxes similar to an approach used by Jung et al. (2017). They used regression analysis to determine



120 the contribution of environmental variables to the anomalies in GPP and ecosystem respiration. Here the assumptions of Jung
 et al. (2017) are extended from carbon flux anomalies to CF_{pred} : a high CF_{pred} needs to be caused by a high predictability of
 one or more of its driving environmental variables. Using this assumption, NPP_{pred} and Rh_{pred} are modeled as the response
 to the predictability of the individual environmental drivers. Regression analysis is used to determine the contribution of the
 predictability of the environmental variables to NPP_{pred} and Rh_{pred} . The drivers of NPP_{pred} are selected following the drivers
 125 of GPP in Jung et al. (2017) as two layers of soil moisture ($midSOIL_{pred}$ for 19 – 78 cm depth and $deepSOIL_{pred}$ for 79 – 268
 cm depth), air temperature ($TEMP_{pred}$) and photosynthetically active radiation (PAR_{pred}). The drivers of Rh_{pred} are based
 on the rate modifying factors used in JSBACH to calculate Rh, which are $TEMP_{pred}$, $PRECIP_{pred}$ and SOC_{pred} . Instead of
 SOC, the content of the aboveground acid hydrolyzable carbon pool (here referred to as SOC) is used as a surrogate variable.
 The contribution of of the predictability of the environmental drivers to the CF_{pred} is calculated as

$$130 \quad V_c FLUX_{j,t,i} = \sum_k [a_{j,t}^{DRI_k} \times V_c DRI_{k,j,t,i}] + \epsilon_{j,t,i} \quad (4)$$

with $V_c FLUX$ being the complementary normalized ensemble variance of NPP or Rh, a^{DRI_k} coefficient of the k th driver
 (for example $TEMP_{pred}$), $V_c DRI$ the predictability of the k th driver and ϵ the residual error term. Grid cell, lead time and
 initialization are denoted by the indices j , t and i . The regression coefficients are calculated by using non-negative least squares
 (Mullen et al., 2015) for every grid cell and lead time by using the data from all initializations. After fitting the regression model
 135 to the data, the individual components of CF_{pred} are calculated as

$$V_c FLUX_{i,t,s}^{DRI_k} = a_{i,t}^{DRI_k} \times V_c DRI_{k,i,t,s}, \quad (5)$$

where $V_c FLUX^{DRI}$ describes the amount of predictability of $FLUX$ that can be contributed to the driver k .

3 Results and discussion

Out of the 35 ensemble simulations initialized along the control run, 7 simulations are part of the El Niño and 8 simulations
 140 part of the La Niña group (Fig. 1). The El Niño simulations peak between the September before initialization and January
 with peak values between 2.2 and 3.6 °C (three month running mean Niño 3.4 SST anomaly). They show a fast decline of the
 anomaly with most models having a negative anomaly in December of the first year and evolving into a La Niña event in the
 second year. Peaks of the La Niña simulations fall between September and June and, while their relative peak anomalies are
 smaller (-1.6 to 3.0 °C), the negative anomaly can be sustained well into the second year.

145 3.1 Potential predictability

The 35 perfect model simulations are used to assess potential NPP_{pred} and Rh_{pred} . Zonal means of the ACC are shown in
 Figure 2. NPP_{pred} and Rh_{pred} are highest in the tropics between 20° North and South, where carbon fluxes are at their global
 maximum. However, apart from the generally high predictability in the tropics, the patterns of NPP_{pred} and Rh_{pred} differ in
 several aspects. While the ACC of NPP has a slower temporal decline with values above 0.8 for 2 to 3 months around the

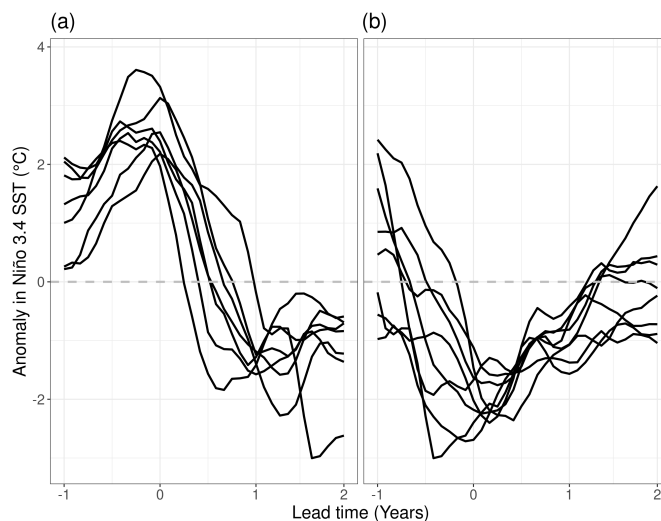


Figure 1. Three month running mean SST anomaly in the Niño 3.4 region of (a) 7 El Niño and (b) 8 La Niña simulations. Simulations are initialized at lead time 0 and run for 24 months. Lines show the Niño 3.4 SST of the control simulation.

150 equator, the ACC of Rh drops below 0.5 within the first two months for most latitudes. However, Rh shows much higher long term predictability, especially in the second year of the simulation where Rh_{pred} is much higher than NPP_{pred} .

While both predictability patterns show signs of a seasonal cycle, they are out of phase with Rh_{pred} distinctly following the wet season and NPP_{pred} appearing to be higher in the dry seasons of the first year. This has a large role on the comparability of NPP_{pred} and Rh_{pred} , since high NPP_{pred} occurs at the time of the seasonal low of NPP fluxes, while high Rh_{pred} is associated
155 with the seasonal high. Another characteristic of the seasonal cycles is their continuity. Rh_{pred} migrates continuously across the zones, while NPP_{pred} demonstrates a sporadic behaviour with a high predictability at around 15° North in JFM and another one at 10° South in JAS.

The spatial patterns of ACC are shown in Figure 3 for March, June and September of the first year and September of the second year. Rh_{pred} shows a very coherent pattern with a band of high predictability migrating from South to North across
160 all continents. The patterns of NPP_{pred} appear to be less constrained by latitude. Although March predictability is dominated by the northern tropics and subtropics, there are other high predictability regions based on initial memory, especially in high latitudes. As opposed to Rh_{pred} , there is no high-predictability band moving across the zones. Instead, NPP_{pred} is reemerging south of the equator in September in the southern Amazon basin, southern Africa and Southeast Asia. An aberration from the seasonal pattern is in the Sahel which has a relatively high NPP_{pred} throughout both years, except in June and July (not
165 shown).

A large portion of the high NPP_{pred} areas can be contributed to predictability gained by ENSO. These high predictability areas are concurring with the carbon flux anomalies caused by ENSO related climate variability (Hashimoto et al., 2004; Bastos et al., 2013). A specific example of this is the disparity in NPP_{pred} between the tropical rainforests of the Amazon and the

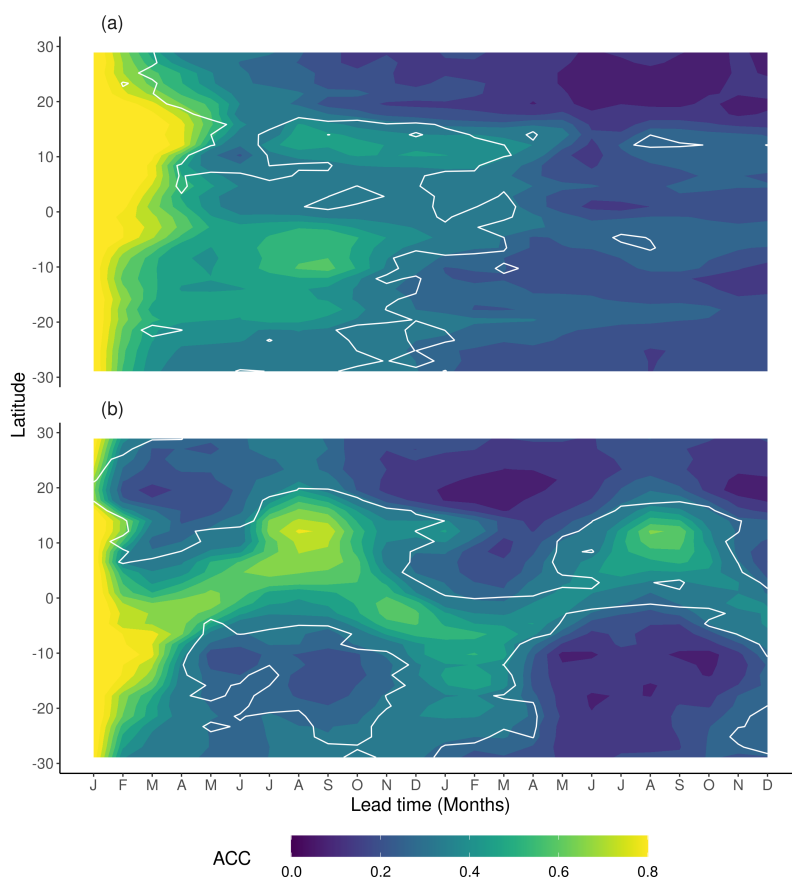


Figure 2. Zonal means of ACC derived from 35 ensemble simulations starting in January for (a) NPP and (b) Rh. Contour lines indicate a significant correlation at the 95% level.

Congo basins. It shows that the high NPP_{pred} of the tropics is not a feature of these ecosystems, but is due to other factors. A
170 reason for the relatively low NPP_{pred} within the Congo basin could be because it is not strongly impacted by ENSO (Holmgren
et al., 2001).

Many of the identified spatial patterns of CF_{pred} can be discovered in similar studies. Most models agree on the Amazon
basin as the global hotspot of CF_{pred} (Zeng et al., 2008; Ilyina et al., 2020), and some reflect the increased predictability in
Southeast Asia and southern Africa (Zeng et al., 2008), but the comparison of predictability horizons remain difficult due to
175 the use of different predictability metrics.

3.2 Composition of predictability

CF_{pred} is sufficiently captured by the regression models (4) with a correlation of 0.71 and 0.75 for NPP and Rh, respectively
(averaged correlation between the V_c derived from the ensemble simulations and the V_c of the regression model for each grid

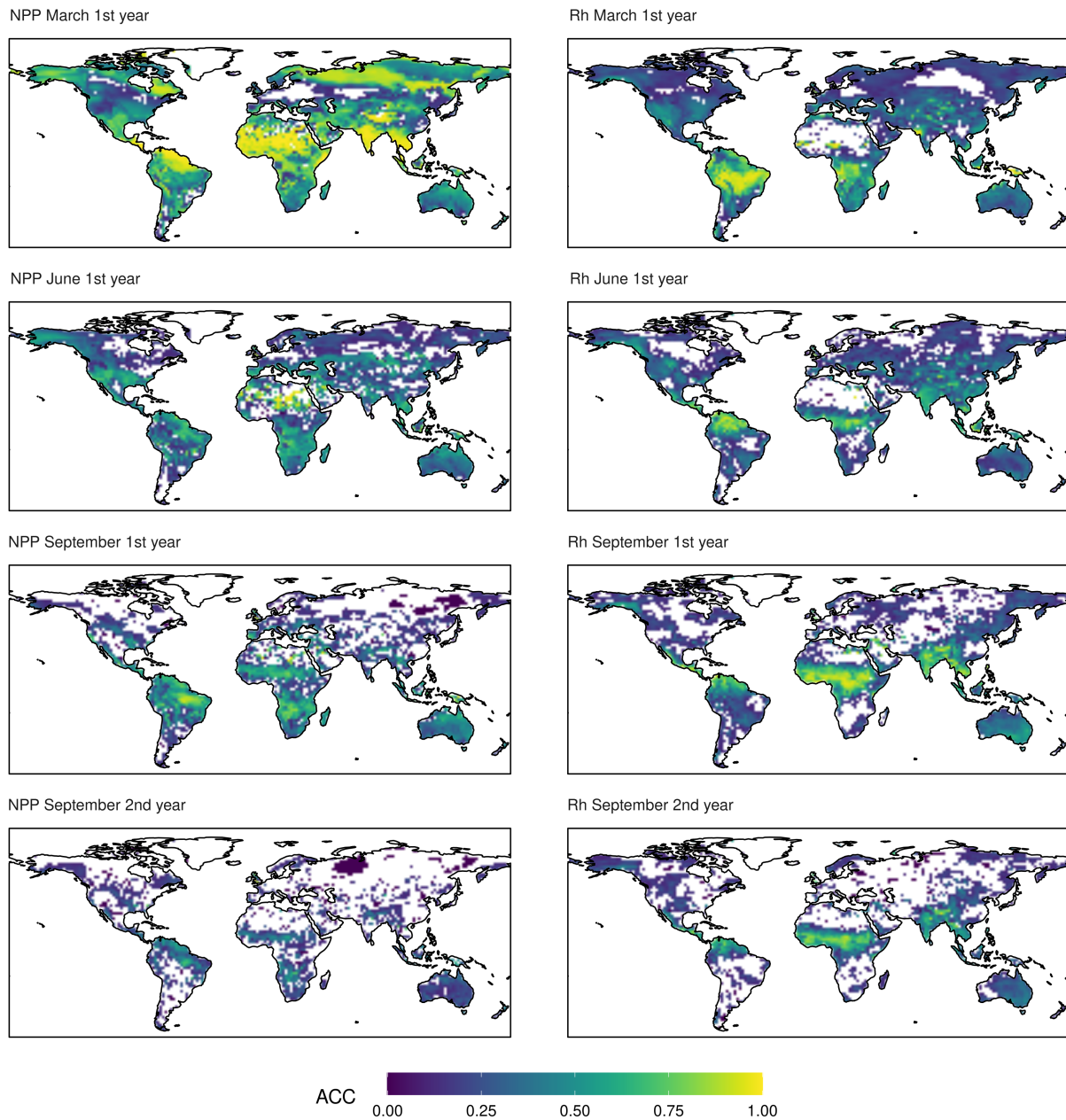


Figure 3. ACC of NPP and Rh. The color scale is cropped at zero. Only significant values at the 95% confidence interval are shown.

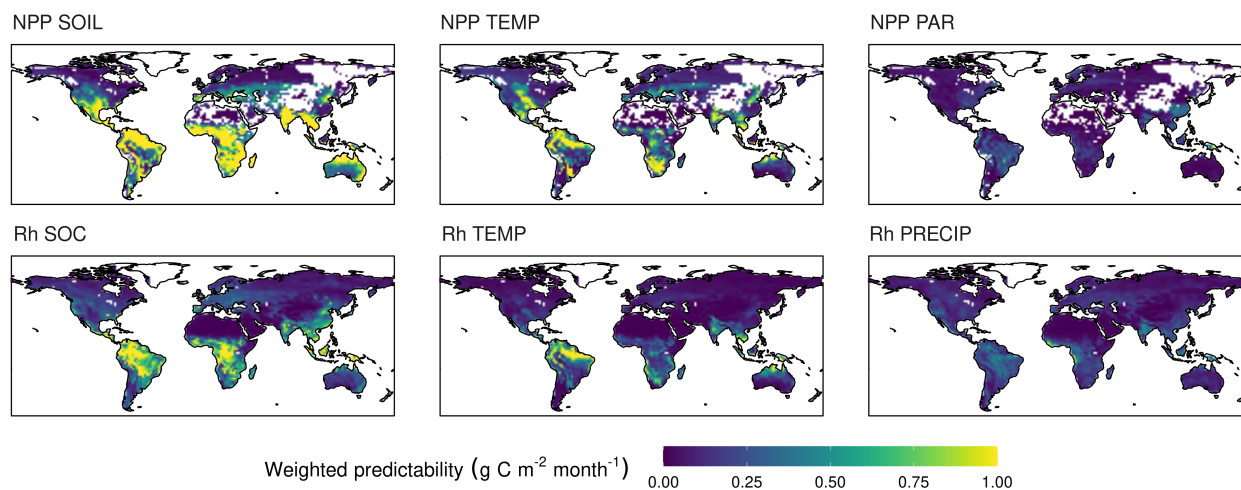


Figure 4. Contributing components to the weighted predictability (wV_c) of NPP and Rh. The contributors to NPP predictability are the predictability of soil moisture (SOIL), temperature (TEMP) and photosynthetically active radiation (PAR). Contributors to Rh predictability are the predictability of soil organic carbon (SOC), TEMP and precipitation (PRECIP). The averaged predictability of the first 12 months lead time weighted by carbon flux anomaly of the ensemble means. The sum of all components of a flux type give the modelled total predictability of that flux.

cell and lead time, not shown). The contributors of CF_{pred} show strong spatiotemporal heterogeneity with drivers alternating
180 across seasons and regions. The temporally averaged contributions to weighted predictability are shown in Figure 4. The
drivers of NPP_{pred} are $SOIL_{pred}$ (sum of $midSOIL_{pred}$ and $deepSOIL_{pred}$) and $TEMP_{pred}$, which explain 62 and 30% of
the globally averaged NPP_{pred} , respectively. PAR_{pred} only contributes 8% to the NPP_{pred} , most of it in the first month of the
simulations. The NPP_{pred} patterns of V_c explained by $SOIL_{pred}$ and $TEMP_{pred}$ are similar to the patterns of ACC, although
areas with low carbon flux densities are excluded through weighting by absolute flux anomaly. While the NPP_{pred} explained
185 by $SOIL_{pred}$ has a spatial extent that broadly covers all regions of high NPP_{pred} , $TEMP_{pred}$ is concentrated to certain areas.
 $TEMP_{pred}$ is high in a band spanning from the Amazon basin to northern South America, in southern Africa and in Southeast
Asia. The largest contributor to Rh_{pred} is SOC_{pred} (52%) followed by $TEMP_{pred}$ (27%). Similar to NPP_{pred} , the temperature
component is highest in the Amazon basin, southern Africa and Southeast Asia.

There are more variables that are regarded as key drivers of NPP variability and could have been considered as predictors in
190 the regression models. Most importantly, LAI and humidity play an important role in NPP variability (Schaefer et al., 2002).
Several studies show the role of a dynamical simulation of LAI in extending the predictability of land surface processes (Zeng
et al., 1999; Wang et al., 2010, 2011; Weiss et al., 2012, 2014). Here, the inclusion of LAI as a predictor is rejected because of
the susceptibility of regression models to correlated predictors.

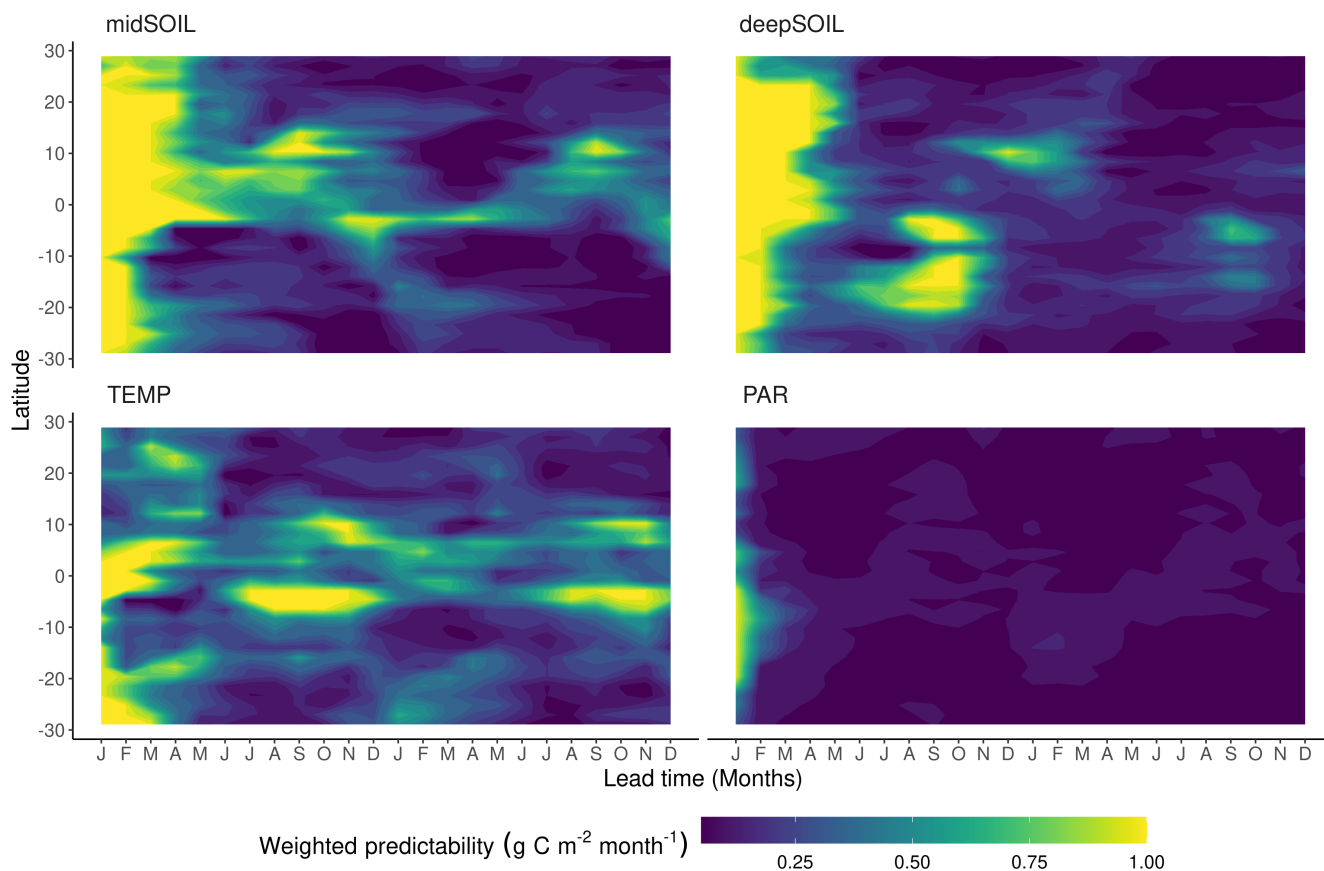


Figure 5. Zonal means of contributing components to the weighted NPP predictability (wV_c). The contributing components are the predictability of soil moisture in 19 – 78 cm and 79 – 268 cm depth (midSOIL and deepSOIL), air temperature (TEMP), and photosynthetically active radiation (PAR).

3.2.1 Seasonality

195 The seasonal patterns of NPP_{pred} revealed in the ACC data (Fig. 2 and 3) are reproducible by the decomposed predictability metric V_c (Fig. 5). They show the reemergence of predictability in the dry season at various locations, and reveal that this phenomenon can not be contributed to a single factor. The largest pattern is a reemergence in July to November at 1° to 4° South and can be associated with the high NPP_{pred} in the southern Amazon (Fig. 3 NPP September 1st year). This pattern is due to increased $TEMP_{pred}$ throughout the dry season, which is extended by high $deepSOIL_{pred}$ in September, and even
 200 reoccurs in the second year of the simulation. Another pattern explains the high NPP_{pred} in southern Africa between August and October, which is due to $deepSOIL_{pred}$.



205 These cases of high dry season NPP_{pred} in the tropics are most likely due to the seasonally changing limitations of NPP. During the productive wet season, plant growth is limited by incoming radiation (Wang et al., 2010) which has little variability and poor predictability. Instead, most of the interannual variability of NPP can be explained by dry season variability. One study found over 80% of western Amazon NPP variability to take place between July and September (Wang et al., 2011). The water limitation of NPP during the dry season (Tian et al., 2000) does not only introduce higher variability as compared with the energy limited wet season, but the coupling of NPP to soil moisture also lends NPP the high predictability of soil moisture.

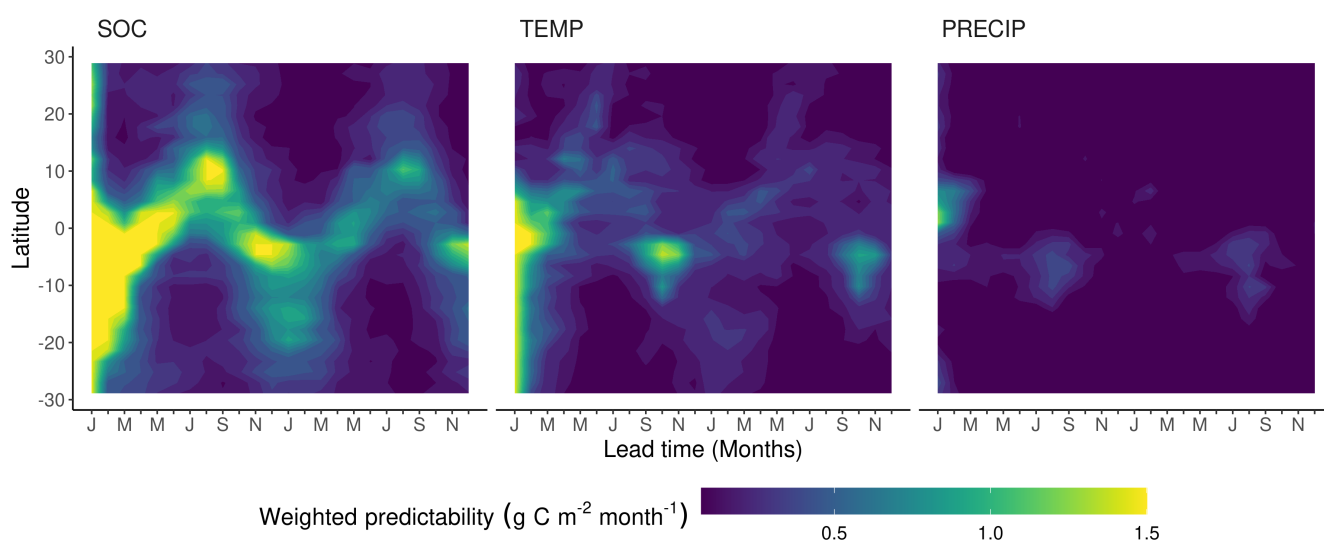


Figure 6. Zonal means of contributing components to the weighted Rh predictability (wV_c). The contributing components are the predictability of soil organic matter (SOC), air temperature (TEMP) and precipitation (PRECIP).

210 Although the seasonality of Rh_{pred} shows a reversed tendency to NPP_{pred} with higher predictability in the wet season, the mechanisms explaining the seasonality are similar. The seasonally varying Rh_{pred} can be explained by the inherently different predictability of the seasonally dominant limiting factor of Rh (Fig. 6). During the dry season the limiting factor of Rh is precipitation, which has a generally low predictability. The absence of precipitation for several weeks will inhibit soil respiration completely. There is a sharp increase in Rh variability in the dry-wet transition because the onset of precipitation is difficult to predict. As precipitation increases, the moisture constraint is asymptotically lifted and approaches zero. At this point, Rh becomes limited by substrate availability, which has a much higher predictability than climatic variables. The high
215 SOC_{pred} is due to the persistence of SOC anomalies because of the low decomposition rates and the pause of decomposition during dry seasons. Although $TEMP_{pred}$ is higher than $PRECIP_{pred}$, it only plays a minor role in tropical Rh_{pred} , because tropical Rh has relatively low temperature sensitivity (Meir et al., 2008).

These pronounced seasonal patterns of Rh_{pred} hinge on the implementation of the precipitation sensibility function in MPI-ESM. The shape and parameterization of the rate modifying function of decomposition to moisture sets Rh to be more sensible



220 to precipitation in the dry than in the wet season. However, the relationship between Rh and moisture in the tropics is the highly debated subject of various studies coming to different conclusions. These studies suggest a parabolic or no relationship with soil moisture (Meir et al., 2008) or linear increase with precipitation (Tian et al., 2000).

3.2.2 Interannual variability

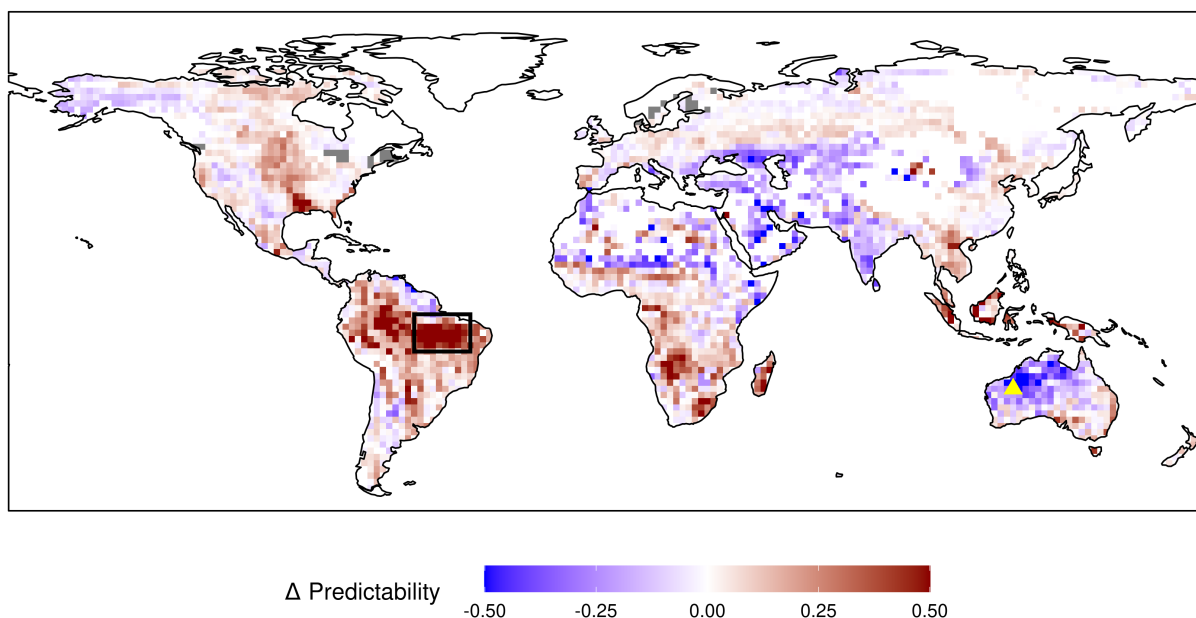


Figure 7. Difference in NPP predictability (V_c) based on the initial soil moisture. The mean NPP predictability of the first year from the 20% driest initializations are subtracted from the 20% wettest initializations for every grid cell. Red color means higher NPP predictability in wet years. Soil moisture from 19 – 78 cm depth is used to determine initial conditions.

Using the distance based predictability metric V_c also allows to evaluate the variability of predictability between different
225 initializations. Among the regions with the highest interannual variability of NPP_{pred} are the southern Amazon basin (Box in Fig. 7), with a mean V_c of 0.24 and an SD of 0.32, and northwestern Australia, with a mean of 0.16 and an SD of 0.60 (23 °S, 122 °W). Figure 7 shows how the interannual variability of NPP_{pred} is affected by initial soil moisture. The majority of regions with a high NPP_{pred} (Fig. 3 and 4) have a higher predictability in years initiated from wet states. Exceptions to this trend are India and northwestern Australia, where NPP_{pred} is higher in dry years. The strongest difference in NPP_{pred} is in
230 the Amazon basin, where overall NPP_{pred} and interannual variability of predictability are also at the global maximum.

To determine the mechanisms responsible for this difference in predictability we focus on the composition of the NPP_{pred} in the southern Amazon basin (box in Fig. 7). To represent wet and dry years, a composite analysis is used based on the ENSO



states (The El Niño years are the driest extremes at initialization while soils are often saturated at the beginning of La Niña years).

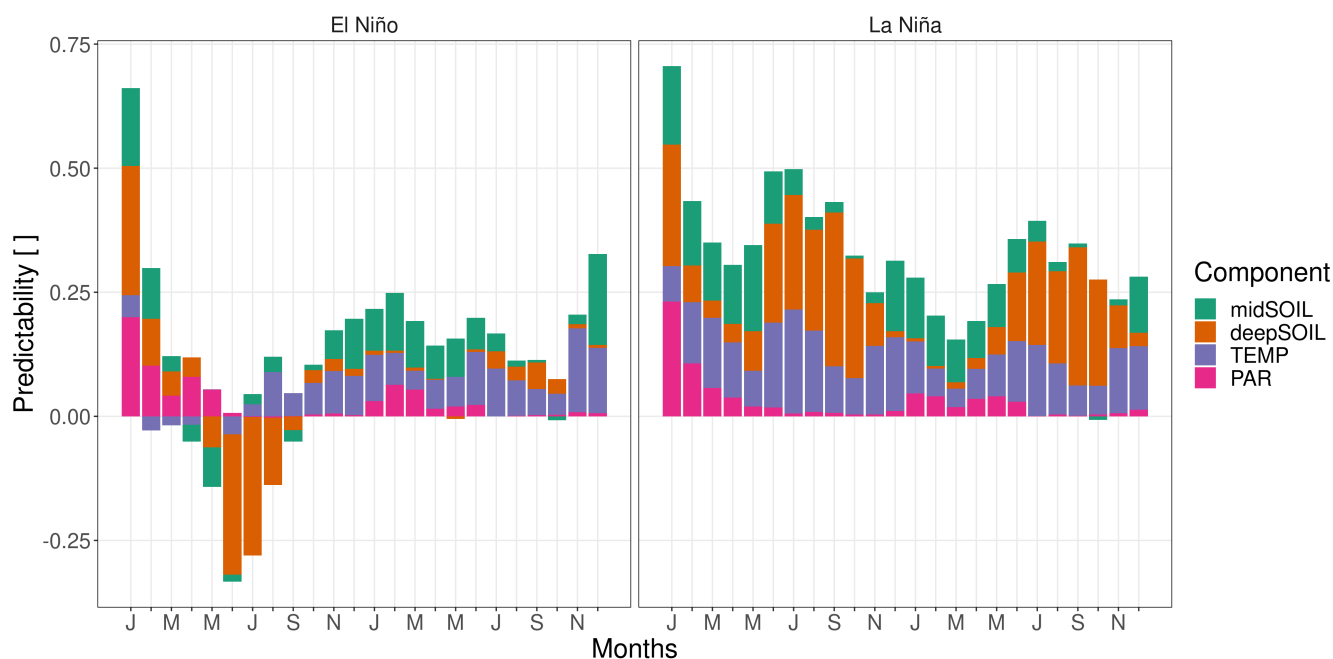


Figure 8. The composition of NPP predictability (V_c) in the Amazon basin by ENSO state. The contributing components are the predictability of soil moisture in 19 – 78 cm and 79 – 268 cm depth (midSOIL and deepSOIL), air temperature (TEMP), and photosynthetically active radiation (PAR). La Niña years have an overall higher predictability. Negative values mean an ensemble variance that is exceeding the climatological variance.

235 The different composition of NPP_{pred} within the southern Amazon basin is shown in Fig. 8. La Niña years have an overall
 higher NPP_{pred} , which even lasts throughout the second year of the simulations. However, the drivers causing the difference of
 increased La Niña predictability are changing over time. Within the growing season, which is mostly between December and
 July, $midSOIL_{pred}$ contributes largely to the increased La Niña predictability while $deepSOIL_{pred}$ gains in importance during
 boreal summer, when topsoils are dry. An increase in $TEMP_{pred}$ explains a large fraction of increased La Niña predictability
 240 throughout the first year.

The increase of $midSOIL_{pred}$ during the growing season can be explained by the relationship between precipitation and the
 change in soil moisture in spring (Fig. 9 (a)). Although the variability of precipitation is comparable between the ENSO states,
 there is little change in soil moisture in the La Niña years while the relationship between precipitation and soil moisture change
 is more pronounced in the El Niño years. The difference in this covariance between the ENSO states is linked to the initial
 245 water content (Fig. 9 (b)). The El Niño year is initialized at a depleted state, and precipitation is used to recharge midSOIL.
 This leads to the translation of the variability in precipitation to a variability in midSOIL. Since midSOIL is saturated at the

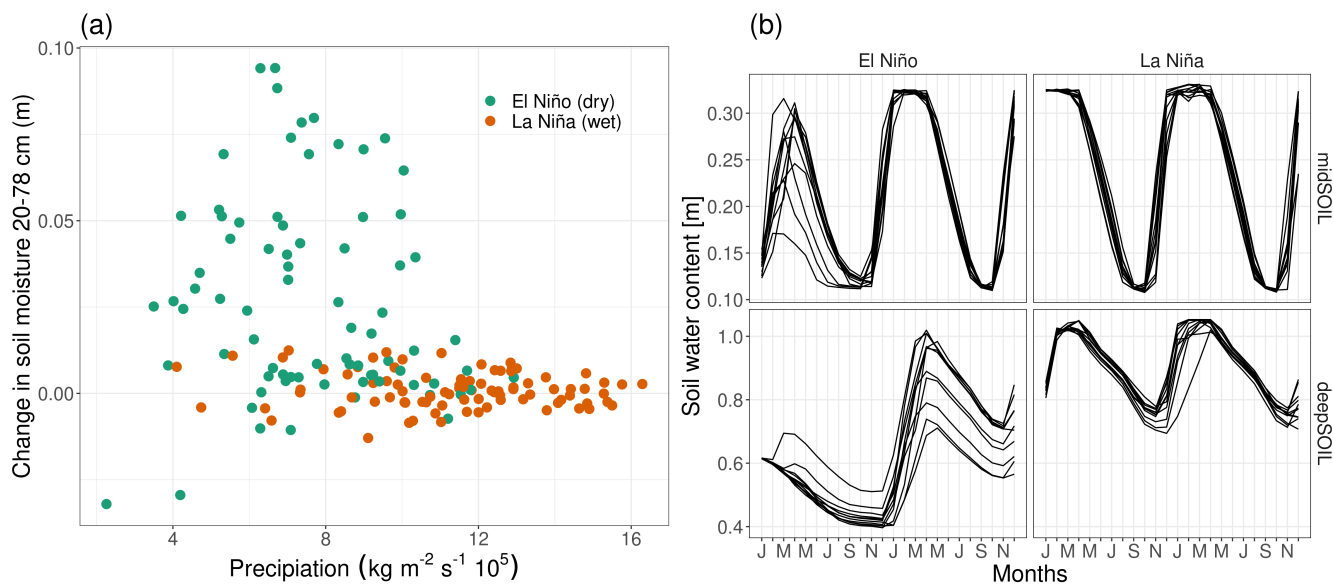


Figure 9. Soil water dynamics of different ENSO states in the Amazon basin at 8°S , 54°W . (a) Relationship between February precipitation and change in soil moisture from February to March. (b) Soil water content of the 11 member ensemble simulation for one specific El Niño and La Niña year (midSOIL and deepSOIL are the moisture content at 19 – 78 cm and 79 – 268 cm respectively).

initialization of the La Niña year, it is hardly affected by the variability of precipitation and the excess water leaves the system as runoff or drainage.

The same mechanism is responsible for the difference in deepSOIL_{pred}. As midSOIL dries out during the summer months, NPP is increasingly coupled to deepSOIL. Every ensemble member of the La Niña simulation receives enough precipitation to saturate deepSOIL, thereby reducing its variability, while none of the members in the El Niño year can recharge the soil water deficit.

Increased NPP_{pred} in wet years due to TEMP_{pred} can have multiple reasons which are difficult to disentangle. As soil moisture and surface temperature are coupled through evapotranspiration, a reduced variability in soil moisture suggests a reduced variability in temperature as well. Contributing to this effect is the nonlinear mechanism controlling evaporation. At the wet end of the spectrum, evaporation is not limited by soil moisture, meaning that a small variability in soil moisture of a wet soil does not affect evaporation. A counteractive process that might increase predictability in dry years is described by Koster et al. (2011). They suggested that in ecosystems which are generally at the wet end of the spectrum (which is the case for the Amazon basin) land-atmosphere coupling is stronger in dry years when evaporation is limited by soil moisture. This increased coupling can extend TEMP_{pred} by linking it to soil moisture. However, their study was conducted on North America, where land-atmosphere coupling is generally stronger than in tropical rainforest (Guo and Dirmeyer, 2013).

To investigate processes behind the difference in temperature variability per ENSO state, we analyzed the key elements of the surface energy balance. Almost all processes have a continuously higher variability in the El Niño years (Fig. 10).

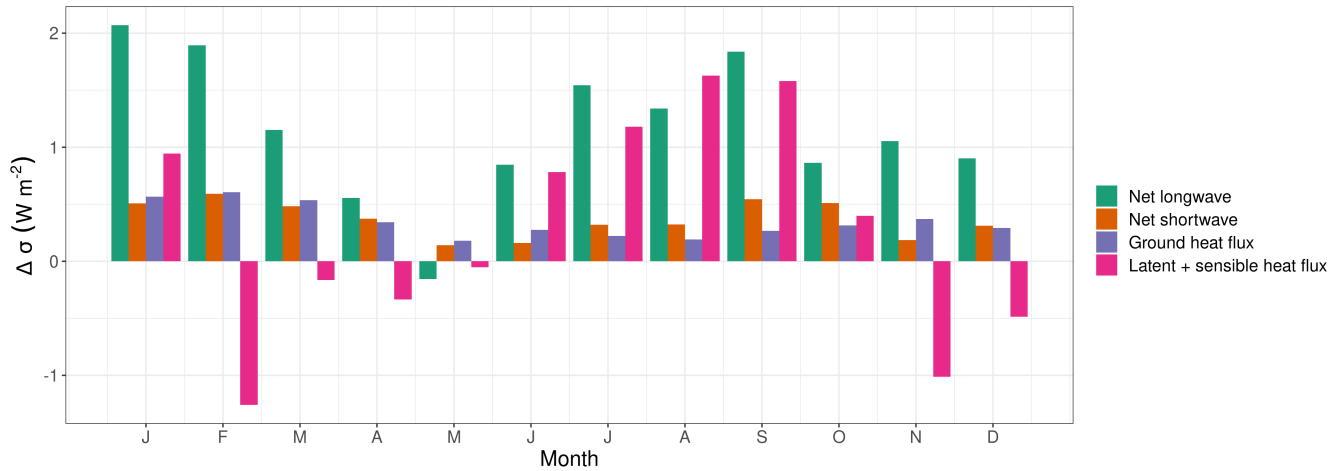


Figure 10. Difference in standard deviation ($\Delta\sigma = \sigma \text{ El Niño} - \sigma \text{ La Niña}$) of different components of the surface energy balance in the Amazon basin. The latent and sensible heat fluxes are pooled because of their strong negative correlation.

265 The strongest difference in variability is in net longwave radiation, but this is most likely an effect of increased variability of surface temperature and not the cause. The SD of net shortwave radiation and ground heat flux are evenly increased by around 0.4 W m^{-2} across the first year. Except for some winter and spring months, the latent and sensible heat fluxes have an increased variability in the El Niño years. At the peak, difference in variability in August is mostly due to an increased variability in the latent heat flux.

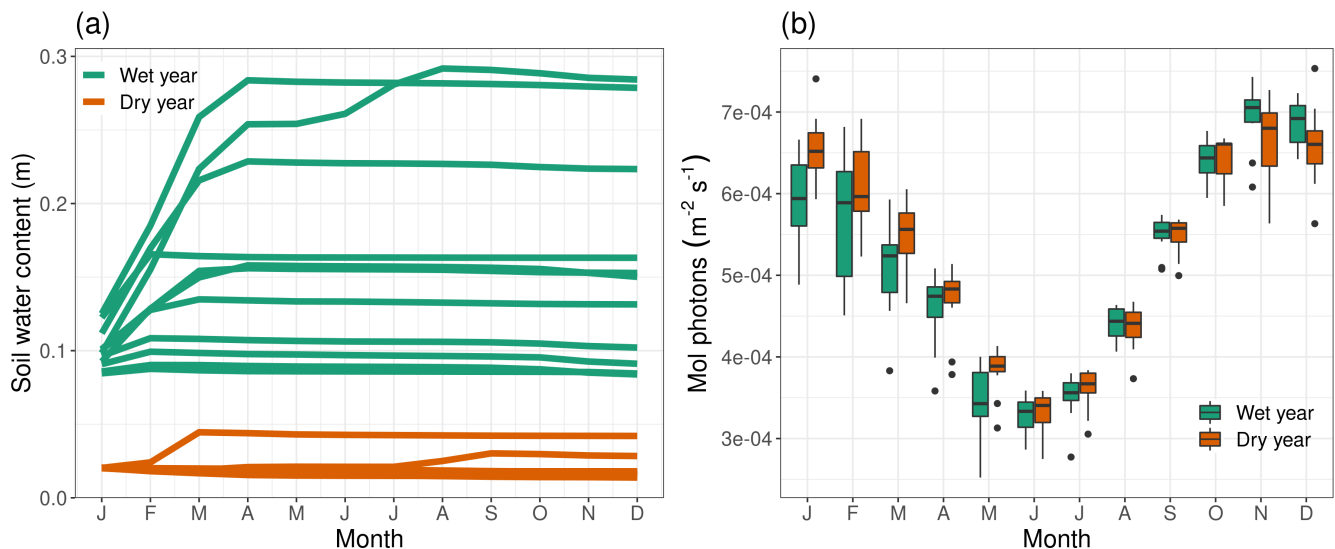


Figure 11. Difference in ensemble member spread in northwestern Australia between a wet and a dry year for (a) deepSOIL and (b) PAR.



As mentioned above, there are also certain regions with an inverse relationship between wetness and NPP_{pred} . These are
270 predominantly in arid regions like northwestern Australia, India, northern Caucasus and the western US (Fig 7). The mechanisms explaining the increased NPP_{pred} in dry years are exemplified on two initializations from the dry and wet spectrum in northwestern Australia at 23° South, 122° East (yellow triangle in Fig. 7).

This higher NPP_{pred} can be contributed to less variability in deepSOIL and PAR (Fig. 11). The predictability providing
275 mechanism of deepSOIL is comparable with the process in the Amazon basin. With soil moisture dynamics frequently operating at extreme ends of the water holding capacity, the variance can be minimized by all ensemble members being pushed against the boundaries of the system. As opposed to the Amazon basin, in northwestern Australia the ensemble members are clustered at the dry end of the water holding capacity (Fig. 11 (a) dry years), while any introduction of soil moisture will increase the variability.

Another difference in NPP_{pred} is caused by a differing variability of PAR (Fig. 11 (b)). Most dry years have little cloud
280 cover and no restriction of incoming radiation. However, in wet years it is difficult to predict the extent of precipitation and cloud cover, which increases the variability of PAR.

The relationship between initial soil moisture and climate predictability is noted by others. Koster et al. (2011) have determined that, depending on the region, the direction of this relationship can go either way. This asymmetry of predictability is present in areas of high land-atmosphere coupling and is caused by the nonlinear relationship of evaporative fraction with
285 soil moisture. Another study has investigated the predictability of European summer heat and find different weather regime frequencies in initially dry and wet conditions (Quesada et al., 2012).

4 Conclusions

In this study, we take a closer look at spatiotemporal patterns of terrestrial CF_{pred} , identify the climatic and environmental sources of predictability, and the feedback mechanisms prolonging the memory of the system. We propose a metric of CF_{pred}
290 weighted by the amplitude of carbon flux anomalies. This metric allows to evaluate the role of different regions and processes to the predictability of the global carbon cycle.

We find that the spatiotemporal patterns of NPP_{pred} and Rh_{pred} are determined by (a) the predictability of the carbon flux drivers, (b) the climatic anomalies caused by low-frequency climate modes as ENSO, (c) the seasonal change of limiting factors and (d) threshold processes and nonlinearity of ecosystem responses.

295 Decomposing the predictability signal shows there is a high spatiotemporal variability in the drivers of predictability. On the global average, NPP_{pred} is to 62% explained by $SOIL_{pred}$, and to 30% by $TEMP_{pred}$. Rh_{pred} is explained by SOC_{pred} and $TEMP_{pred}$ (50 and 27%) predictability. Rh_{pred} can outlast NPP predictability because SOC, its main drivers, has a much higher anomaly persistence than the drivers of NPP. On the other hand, NPP is more directly affected by climatic drivers and is therefore able to benefit from the predictability of persisting climatic anomalies like the effects of ENSO.
300 Intraannual variability of CF_{pred} is controlled by the seasonally specific limiting factor of NPP and Rh. This leads to NPP gaining predictability in the dry season, when soil moisture replaces PAR as the limiting factor, while Rh_{pred} has its peak in



the wet season, when SOC drives the carbon fluxes instead of precipitation in the dry season. This change in limiting factors is due to the nonlinear relationships of transpiration to soil moisture and Rh to precipitation. Both of these relationships describe a saturation point, at which the variability of moisture (precipitation) becomes insignificant to carbon fluxes. Lastly, interannual variability of NPP_{pred} reveals an asymmetry of predictability driven by initial soil moisture and subsequent precipitation. This effect is caused by ecosystems operating at the boundary conditions of the soil moisture regime. The ensemble members of predominantly wet ecosystems are harmonized in wet years when precipitation exceeds the water holding capacity and excess water is removed through runoff and drainage. The reversed effect applies for ecosystems operating at the dry end of the spectrum. These processes reduce the covariance between precipitation and NPP.

Our results highlight the sources of CF_{pred} and can be used for model development to improve the representation of the terrestrial carbon cycle. Further research could be directed towards the simulation of the ENSO imprint in climate models and the relationship between soil moisture and terrestrial carbon fluxes.

Acknowledgements. The authors wish to thank Hongmei Li for her helpful and constructive comments. This paper contributes to the 4C project.



325 References

- Bastos, A., Running, S. W., Gouveia, C., and Trigo, R. M.: The global NPP dependence on ENSO: La Niña and the extraordinary year of 2011, *Journal of Geophysical Research: Biogeosciences*, 118, 1247–1255, 2013.
- Bastos, A., Friedlingstein, P., Sitch, S., Chen, C., Mialon, A., Wigneron, J.-P., Arora, V. K., Briggs, P. R., Canadell, J. G., Ciais, P., et al.: Impact of the 2015/2016 El Niño on the terrestrial carbon cycle constrained by bottom-up and top-down approaches, *Philosophical Transactions of the Royal Society B: Biological Sciences*, 373, 20170304, 2018.
- 330 Becker, E. J., Van Den Dool, H., and Peña, M.: Short-term climate extremes: Prediction skill and predictability, *Journal of climate*, 26, 512–531, 2013.
- Beer, C., Reichstein, M., Tomelleri, E., Ciais, P., Jung, M., Carvalhais, N., Rödenbeck, C., Arain, M. A., Baldocchi, D., Bonan, G. B., et al.: Terrestrial gross carbon dioxide uptake: global distribution and covariation with climate, *Science*, 329, 834–838, 2010.
- 335 Bellucci, A., Haarsma, R., Bellouin, N., Booth, B., Cagnazzo, C., van den Hurk, B., Keenlyside, N., Koenigk, T., Massonnet, F., Matera, S., et al.: Advancements in decadal climate predictability: The role of nonoceanic drivers, *Reviews of Geophysics*, 53, 165–202, 2015.
- Betts, R. A., Jones, C. D., Knight, J. R., Keeling, R. F., and Kennedy, J. J.: El Niño and a record CO₂ rise, *Nature Climate Change*, 6, 806, 2016.
- Bloom, A. A., Exbrayat, J.-F., Van Der Velde, I. R., Feng, L., and Williams, M.: The decadal state of the terrestrial carbon cycle: Global retrievals of terrestrial carbon allocation, pools, and residence times, *Proceedings of the National Academy of Sciences*, 113, 1285–1290, 340 2016.
- Boer, G., Kharin, V., and Merryfield, W.: Decadal predictability and forecast skill, *Climate dynamics*, 41, 1817–1833, 2013.
- Chadburn, S., Burke, E., Cox, P., Friedlingstein, P., Hugelius, G., and Westermann, S.: An observation-based constraint on permafrost loss as a function of global warming, *Nature Climate Change*, 7, 340–344, 2017.
- 345 Chikamoto, Y., Timmermann, A., Stevenson, S., DiNezio, P., and Langford, S.: Decadal predictability of soil water, vegetation, and wildfire frequency over North America, *Climate Dynamics*, 45, 2213–2235, 2015.
- Ciais, P., Sabine, C., Bala, G., Bopp, L., Brovkin, V., Canadell, J., Chhabra, A., DeFries, R., Galloway, J., Heimann, M., et al.: Carbon and other biogeochemical cycles, in: *Climate change 2013: the physical science basis. Contribution of Working Group I to the Fifth Assessment Report of the Intergovernmental Panel on Climate Change*, pp. 465–570, Cambridge University Press, 2014.
- 350 Collins, M. and Sinha, B.: Predictability of decadal variations in the thermohaline circulation and climate, *Geophysical Research Letters*, 30, 2003.
- Fang, Y., Michalak, A. M., Schwalm, C. R., Huntzinger, D. N., Berry, J. A., Ciais, P., Piao, S., Poulter, B., Fisher, J. B., Cook, R. B., et al.: Global land carbon sink response to temperature and precipitation varies with ENSO phase, *Environmental Research Letters*, 12, 064007, 2017.
- 355 Friedlingstein, P., O’Sullivan, M., Jones, M. W., Andrew, R. M., Hauck, J., Olsen, A., Peters, G. P., Peters, W., Pongratz, J., Sitch, S., et al.: Global carbon budget 2020, *Earth System Science Data*, 12, 3269–3340, 2020.
- Griffies, S. and Bryan, K.: A predictability study of simulated North Atlantic multidecadal variability, *Climate dynamics*, 13, 459–487, 1997.
- Guo, Z. and Dirmeyer, P. A.: Interannual variability of land–atmosphere coupling strength, *Journal of Hydrometeorology*, 14, 1636–1646, 2013.
- 360 Hashimoto, H., Nemani, R. R., White, M. A., Jolly, W. M., Piper, S. C., Keeling, C. D., Myneni, R. B., and Running, S. W.: El Niño–Southern Oscillation–induced variability in terrestrial carbon cycling, *Journal of Geophysical Research: Atmospheres*, 109, 2004.



- Holmgren, M., Scheffer, M., Ezcurra, E., Gutiérrez, J. R., and Mohren, G. M.: El Niño effects on the dynamics of terrestrial ecosystems, *Trends in Ecology & Evolution*, 16, 89–94, 2001.
- Ilyina, T., Li, H., Spring, A., Müller, W. A., Bopp, L., Chikamoto, M. O., Danabasoglu, G., Dobrynin, M., Dunne, J., Fransner, F., et al.: Predictable variations of the carbon sinks and atmospheric CO₂ growth in a multi-model framework, *Geophysical Research Letters*, p. e2020GL090695, 2020.
- Jolliffe, I. T. and Stephenson, D. B.: *Forecast verification: a practitioner's guide in atmospheric science*, John Wiley & Sons, 2012.
- Jones, C. D., Collins, M., Cox, P. M., and Spall, S. A.: The carbon cycle response to ENSO: A coupled climate–carbon cycle model study, *Journal of Climate*, 14, 4113–4129, 2001.
- 365 Jung, M., Reichstein, M., Schwalm, C. R., Huntingford, C., Sitch, S., Ahlström, A., Arneth, A., Camps-Valls, G., Ciais, P., Friedlingstein, P., et al.: Compensatory water effects link yearly global land CO₂ sink changes to temperature, *Nature*, 541, 516–520, 2017.
- Koster, R., Mahanama, S., Yamada, T., Balsamo, G., Berg, A., Boisserie, M., Dirmeyer, P., Doblas-Reyes, F., Drewitt, G., Gordon, C., et al.: The second phase of the global land–atmosphere coupling experiment: soil moisture contributions to subseasonal forecast skill, *Journal of Hydrometeorology*, 12, 805–822, 2011.
- 370 Krull, E. S., Baldock, J. A., and Skjemstad, J. O.: Importance of mechanisms and processes of the stabilisation of soil organic matter for modelling carbon turnover, *Functional plant biology*, 30, 207–222, 2003.
- Lovenduski, N. S., Bonan, G. B., Yeager, S. G., Lindsay, K., and Lombardozzi, D. L.: High predictability of terrestrial carbon fluxes from an initialized decadal prediction system, *Environmental Research Letters*, 14, 124074, 2019.
- Luo, Y., Keenan, T. F., and Smith, M.: Predictability of the terrestrial carbon cycle, *Global change biology*, 21, 1737–1751, 2015.
- 380 Luo, Y., Ahlström, A., Allison, S. D., Batjes, N. H., Brovkin, V., Carvalhais, N., Chappell, A., Ciais, P., Davidson, E. A., Finzi, A., et al.: Toward more realistic projections of soil carbon dynamics by Earth system models, *Global Biogeochemical Cycles*, 30, 40–56, 2016.
- Mauritsen, T., Bader, J., Becker, T., Behrens, J., Bittner, M., Brokopf, R., Brovkin, V., Claussen, M., Crueger, T., Esch, M., et al.: Developments in the MPI-M Earth System Model version 1.2 (MPI-ESM1. 2) and its response to increasing CO₂, *Journal of Advances in Modeling Earth Systems*, 11, 998–1038, 2019.
- 385 Meir, P., Metcalfe, D. B., Costa, A., and Fisher, R. A.: The fate of assimilated carbon during drought: impacts on respiration in Amazon rainforests, *Philosophical Transactions of the Royal Society B: Biological Sciences*, 363, 1849–1855, 2008.
- Mullen, K. M., van Stokkum, I. H., and Mullen, M. K.: Package ‘nnls’, Zugang: <https://cran.r-project.org/web/packages/nnls/nnls.pdf> [5.9.2019], 2015.
- Mystakidis, S., Davin, E. L., Gruber, N., and Seneviratne, S. I.: Constraining future terrestrial carbon cycle projections using observation-based water and carbon flux estimates, *Global change biology*, 22, 2198–2215, 2016.
- 390 Quesada, B., Vautard, R., Yiou, P., Hirschi, M., and Seneviratne, S. I.: Asymmetric European summer heat predictability from wet and dry southern winters and springs, *Nature Climate Change*, 2, 736–741, 2012.
- Schaefer, K., Denning, A. S., Suits, N., Kaduk, J., Baker, I., Los, S., and Prihodko, L.: Effect of climate on interannual variability of terrestrial CO₂ fluxes, *Global Biogeochemical Cycles*, 16, 49–1, 2002.
- 395 Sférian, R., Berthet, S., and Chevallier, M.: Assessing the decadal predictability of land and ocean carbon uptake, *Geophysical Research Letters*, 45, 2455–2466, 2018.
- Sitch, S., Friedlingstein, P., Gruber, N., Jones, S. D., Murray-Tortarolo, G., Ahlström, A., Doney, S. C., Graven, H., Heinze, C., Huntingford, C., et al.: Recent trends and drivers of regional sources and sinks of carbon dioxide, *Biogeosciences*, 12, 653–679, 2015.



- Spring, A. and Ilyina, T.: Predictability Horizons in the Global Carbon Cycle Inferred From a Perfect-Model Framework, *Geophysical Research Letters*, 47, e2019GL085311, 2020.
- Spring, A., Ilyina, T., and Marotzke, J.: Inherent uncertainty disguises attribution of reduced atmospheric CO₂ growth to CO₂ emission reductions for up to a decade, *Environmental Research Letters*, 15, 114058, 2020.
- Stockmann, U., Adams, M. A., Crawford, J. W., Field, D. J., Henakaarchchi, N., Jenkins, M., Minasny, B., McBratney, A. B., De Courcelles, V. d. R., Singh, K., et al.: The knowns, known unknowns and unknowns of sequestration of soil organic carbon, *Agriculture, Ecosystems & Environment*, 164, 80–99, 2013.
- Tian, H., Melillo, J., Kicklighter, D., McGuire, A., Helfrich Iii, J., Moore Iii, B., and Vörösmarty, C.: Climatic and biotic controls on annual carbon storage in Amazonian ecosystems, *Global Ecology and Biogeography*, 9, 315–335, 2000.
- Tziolas, N., Tsakiridis, N., Ogen, Y., Kalopesa, E., Ben-Dor, E., Theocharis, J., and Zalidis, G.: An integrated methodology using open soil spectral libraries and Earth Observation data for soil organic carbon estimations in support of soil-related SDGs, *Remote Sensing of Environment*, p. 111793, 2020.
- Wang, G., Sun, S., and Mei, R.: Vegetation dynamics contributes to the multi-decadal variability of precipitation in the Amazon region, *Geophysical Research Letters*, 38, 2011.
- Wang, J., Zeng, N., and Wang, M.: Interannual variability of the atmospheric CO₂ growth rate: roles of precipitation and temperature, *Biogeosciences*, 13, 2339–2352, 2016.
- Wang, Y., Zhao, P., Yu, R., and Rasul, G.: Inter-decadal variability of Tibetan spring vegetation and its associations with eastern China spring rainfall, *International Journal of Climatology: A Journal of the Royal Meteorological Society*, 30, 856–865, 2010.
- Weiss, M., van den Hurk, B., Haarsma, R., and Hazeleger, W.: Impact of vegetation variability on potential predictability and skill of EC-Earth simulations, *Climate dynamics*, 39, 2733–2746, 2012.
- Weiss, M., Miller, P. A., van den Hurk, B. J., van Noije, T., Ștefănescu, S., Haarsma, R., Van Ulft, L. H., Hazeleger, W., Le Sager, P., Smith, B., et al.: Contribution of dynamic vegetation phenology to decadal climate predictability, *Journal of Climate*, 27, 8563–8577, 2014.
- Xu, X., Schimel, J. P., Thornton, P. E., Song, X., Yuan, F., and Goswami, S.: Substrate and environmental controls on microbial assimilation of soil organic carbon: a framework for Earth system models, *Ecology letters*, 17, 547–555, 2014.
- Zeng, N., Neelin, J. D., Lau, K.-M., and Tucker, C. J.: Enhancement of interdecadal climate variability in the Sahel by vegetation interaction, *Science*, 286, 1537–1540, 1999.
- Zeng, N., Yoon, J.-H., Vintzileos, A., Collatz, G. J., Kalnay, E., Mariotti, A., Kumar, A., Busalacchi, A., and Lord, S.: Dynamical prediction of terrestrial ecosystems and the global carbon cycle: A 25-year hindcast experiment, *Global biogeochemical cycles*, 22, 2008.