

See discussions, stats, and author profiles for this publication at: <https://www.researchgate.net/publication/358095930>

# Effect of *Desmodium intortum* and black soldier fly larvae (*Hermetia illucens*) based meal on sensory and physicochemical properties of broiler chicken meat in Kenya

Article in *Journal of Insects as Food and Feed* · January 2022

DOI: 10.3920/JIFF2021.0103

CITATIONS

0

READS

8

10 authors, including:



**Steve B. S. Baleba**

Max Planck Institute for Chemical Ecology

19 PUBLICATIONS 77 CITATIONS

[SEE PROFILE](#)



**Chrysantus Tanga**

icipe – International Centre of Insect Physiology and Ecology

124 PUBLICATIONS 1,246 CITATIONS

[SEE PROFILE](#)



**Mathew Gitau Gicheha**

Jomo Kenyatta University of Agriculture and Technology

48 PUBLICATIONS 146 CITATIONS

[SEE PROFILE](#)



**Girma Hailu**

icipe – International Centre of Insect Physiology and Ecology

24 PUBLICATIONS 477 CITATIONS

[SEE PROFILE](#)

Some of the authors of this publication are also working on these related projects:




Agricultural Technology Transfer [View project](#)



Fungal Entomopathogens for Aphid Management [View project](#)

# Effect of *Desmodium intortum* and black soldier fly larvae (*Hermetia illucens*) based meal on sensory and physicochemical properties of broiler chicken meat in Kenya

M.M. Mutisya<sup>1,2</sup>, S.B.S. Baleba<sup>1,3</sup>, J.N. Kinyuru<sup>4</sup>, C.M. Tanga<sup>1</sup>, M. Gicheha<sup>2</sup>, G. Hailu<sup>1</sup>, D. Salifu<sup>1</sup>, J. Egonu<sup>1</sup>, X. Cheseto<sup>1</sup> and S. Niassy<sup>1\*</sup> 

<sup>1</sup>International Centre of Insect Physiology and Ecology (icipe), P.O. Box 30772-00100, Nairobi, Kenya; <sup>2</sup>Department of Animal Science, Jomo Kenyatta University of Agriculture and Technology (JKUAT), P.O. Box 62000-00200, Nairobi, Kenya; <sup>3</sup>Max Planck Institute for Chemical Ecology, Department of Evolutionary Neuroethology, Hans-Knöll-Straße 8, 07745 Jena, Germany; <sup>4</sup>Department of Food Science and Technology, Jomo Kenyatta University of Agriculture and Technology (JKUAT), P.O. Box 62000-00200, Nairobi, Kenya; [sniassy@icipe.org](mailto:sniassy@icipe.org)

Received: 12 June 2021 / Accepted: 16 November 2021

© 2022 Wageningen Academic Publishers

OPEN ACCESS 

RESEARCH ARTICLE

## Abstract

We evaluated the effect of dietary inclusion of different ratios of *Desmodium intortum* (DI) and black soldier fly larvae meal (BSFLM) on sensory traits and physicochemical qualities of broiler chicks meat. Three formulations: T1:75%BSFL:25%DI; T2:50%BSFL:50DI, and T3:25BSFL:75% DI as a protein source were tested. A conventional feed was used as the control diet. On day 42, the chickens were slaughtered, and thigh muscles were used for sensory and physicochemical evaluations. T1 was preferred for its flavour and tenderness, T2 for its juiciness and T3 for its colour, flavour, taste and overall acceptability scores. In terms of physical properties, all three types of meat had significantly lower moisture content and a higher water holding capacity than the control. T3 had the lowest moisture content, cooking loss and pH, whereas the meat from control diet had the highest cooking loss and pH. No significant differences were found in terms of meat lightness; however, meat from control diet showed the highest redness value, and T3 had the highest yellowness value. Dietary inclusion of DI-BSFL affected the fatty acid and cholesterol profiles of the meats. A holistic Principal Component Analysis indicated that the tested meats were distinct in their sensory and physicochemical properties. These variations in physicochemical properties may account for the difference in organoleptic perception, especially for T3. Further research should focus on feed modulation in relation to consumers' preference and potential health benefits.

**Keywords:** *Desmodium*, *Hermetia illucens*, insect-based feed, broiler chickens, meat quality

## 1. Introduction

Globally, modern poultry production is a fast-growing sector, mainly serving as an affordable source of animal protein, income and livelihood (Bett *et al.*, 2012; Ravindran, 2013). Although significant technological advancements in genetic engineering and mass production of broiler birds have been achieved, access to quality poultry feed remains a major hindrance to the expansion of the sector (Min and Ahn, 2014; Mmereole, 2008; Ravindran, 2013). Conventional feed accounts for 70 to 80% of production cost, mainly due to the high cost of the protein component (Van der Poel *et al.*, 2013). Conventional feeds which rely

on soybean and fish meal for protein are mainly designed to enhance productivity and profitability. The overreliance on soybean and fish meal for feed is not tenable due to the competing interest as human food, the high demand in water, and scarcity of land. There is a need to innovate and identify sustainable feeds that will ensure optimal growth performance and carcass quality and improve the sensory, physicochemical attributes of the meat (Alex *et al.*, 2017; Lichovniková *et al.*, 2009).

In recent years, insects have been suggested as one of the most promising and sustainable alternatives to fish and soybean meals. The black soldier fly larva (BSFL; *Hermetia*

*illucens*) is one of the insect species widely used globally as feed because of its rich nutritional profile. Studies have shown that black soldier fly larvae meal (BSFLM) can replace 25 to 100% of fish or soybean meals in broiler chicken, quails and barberry partridge feed and ensure optimal health status, satisfactory growth performance and overall meat quality (Cullere *et al.*, 2016, 2017; Dabbou *et al.*, 2018; Gariglio *et al.*, 2019; Makkar *et al.*, 2014; Secci *et al.*, 2018). However, the amino acid profile of the BSFL is highly variable (Liland *et al.*, 2017; Makkar *et al.*, 2014). Recent studies demonstrated that the fat composition of BSFL might not be optimal for providing healthy meat for the modern consumer (Cullere *et al.*, 2018). There is limited knowledge on consumer's opinion on the direct effect of BSFL replacement in poultry feed in terms of sensory attributes, confinement, colour, firmness, flavour and physicochemical meat quality. To a large extent, chicken producers and consumers attest to a link between diet composition and sensory and physicochemical attributes of chicken meat (Alex *et al.*, 2017). Testimonies on the higher preference for local free-range chicken meat referred to as 'kienyeji', which fetches higher market prices, is mainly linked to its perceived superior taste (Omondi, 2017). The local chicken mainly acquires its nutrients through scavenging on insects and plant materials.

Furthermore, with the recent rising food consciousness among consumers, the healthfulness of broiler poultry meat and related products and meat appearance have become an important criterion for selection for purchase (Sow and Gronnet, 2010; Wideman *et al.*, 2016). Meat attributes such as taste, tenderness, juiciness, drip loss, pH, cooking loss, fat content and shelf life not only influence consumer perception but also processing functionality (sausage, minced meat) (Albrecht *et al.*, 2019; Lonergan *et al.*, 2004; Ondulla *et al.*, 2019). To enhance such consumer-oriented attributes, the development of innovative and affordable feeds is crucial. Cullere *et al.* (2018) recommended supplementing feed with various essential amino acids to provide a diverse and balanced nutrient composition for the chicken. Plant-based proteins such as *Desmodium intortum* are suggested as a valuable substitute for poultry feed (Abdullah, 1974; Tegua and Beynen, 2005). *D. intortum* has an acceptable protein content, which can be as high as 24% (Heinritz *et al.*, 2012), and contains an appropriate content of Methionine-Lysine and Threonine, which are the most limiting amino acids in broiler chicken feed. *D. intortum* has been proven to positively impact egg quality, specifically improved yolk colour and chicken performance (Mutisya *et al.*, 2021; Tegua and Beynen, 2005). Studies on the inclusion of legumes and forages in broiler bird diets have also been shown to reduce cholesterol concentration in the animals' blood and meat, as well as improve feed conversion efficiency through improved digestion and metabolism (Jiang *et al.*, 2012; Krauze and Grela, 2010; Ponte *et al.*, 2005; Purwin *et al.*, 2014).

*D. intortum* is widely recommended to smallholder farmers as a companion plant in push-pull farming system, to manage Striga weed, stemborers, and fall armyworm, which affect cereal production in Africa negatively. As a legume, *D. intortum* improves soil quality through nitrogen fixation, retain moisture and provides excellent fodder for livestock. We recently reported in previous studies that the combination of *D. intortum* and BSFL as feed ingredients in poultry diets improves animal performance and provide high returns to producers (Mutisya *et al.*, 2021). The three-level inclusion of *D. intortum* and BSFL consisted of a gradient of concentration of the two protein sources to evaluate their effect on sensory attributes and meat quality characteristics as these are critical drivers of consumer acceptance. However, the effect of such combinations on sensory attributes and meat quality characteristics, which are critical for consumers, have not been elucidated yet. Therefore, this study aimed to investigate the effects of BSFLM and *D. intortum*-based diets on broiler chicken meat's sensory and physicochemical properties.

## 2. Materials and methods

### Study site

The poultry rearing was conducted at the International Centre of Insect Physiology and Ecology (*icipe*), Duduville Campus, Kasarani Sub-County, Nairobi County, Kenya (Latitude: 1.2219° S; Longitude: 36.8967° E). The general care and management of the animals followed accepted guidelines as described by the Federation of Animal Science Societies (FASS, 2010).

### Ethical approval

The experimental design and all procedures conducted were based on animal welfare principles recommended by the National Research Council to avoid any discomfort or pain (McGlone, 2001). Sound animal husbandry practices were used to provide systems of care that permitted the chickens to grow to maturity and express their species-specific behaviour. Adequate veterinary care was provided to ensure proper animal health, and research assistants involved in the study were trained and motivated to achieve high-quality animal care throughout the experiment. A programme was implemented for disease prevention, surveillance, diagnosis and treatment (McGlone, 2001). Chickens were slowly acclimatised to handling by frequent exposure to kind and gentle handling by research personnel, starting at day one to ease handling at later stages of the study and increase feed efficiency and body weight gain (Gross and Siegel, 1983). Ethical approval for the study was provided by the Institutional Animal Care and Use Committee (IACUC) of the Kenya Agricultural and Livestock Research Organization (KALRO) – Veterinary Science Research Institute (VSRI); Approval Code No.: KALRO-VSRI/IACUC019/30082019.

### Diet formulation

The ingredients used in the feed formulation are shown in Table 1. The test diets were formulated according to the Kenya Bureau of Standards (KEBS) as guided by NRC (1994) specifications for broiler starter and finisher feeds. The isonitrogenous and isoenergetic diets (3,000 kcal/kg ME, 220 g crude protein/kg and 3,000 kcal ME, 180 g crude protein/kg) were prepared by replacing the fish meal content in the conventional diet (control diet) with BSFL and *D. intortum*. The following formulations were tested: 25% *D. intortum*+75%BSFLM (T1), 50% *D. intortum*+50%BSFLM (T2) and 75% *D. intortum*+25%BSFL(T3). The three diets were chosen for their relatively high protein content and amino acid composition. The analysed nutrient and essential amino acid composition of the meals are presented in Table 1. For the finisher diets, the different mixtures containing all the required ingredients were pelletised at temps of 65 °C using a 50-80 kg/h Pellet Machine

manufactured and sold locally by Muharata Company Ltd. (Nairobi, Kenya). The pellet size was customised at 3 mm size for chickens, as indicated by the manufacturer. The dry matter, ash, crude protein, crude fibre, and ether extracts of the test diets fish meal, black soldier fly larvae meal and *D. intortum* meal were analysed according to the Association of Official Analytical Chemists (1990) methods. The amino acid content of the BSFLM and *D. intortum* was determined following the methods of 994.12 (AOAC 2002).

### Chicken rearing and management

One hundred and twenty (n=120) mixed-sex 1-d-old broiler chicks (Cobb500<sup>®</sup>) were sourced from Kenchic Ltd. hatchery in Thika, Kenya and reared for 42 d (i.e. 7 d adaptation phase and 35-d feeding phase). The chicks were placed in a common brooder room of 152.4×182.88 cm for the first seven d. Brooder temperatures were maintained at between 33-35 °C using light heating bulbs of 250 watts

**Table 1. Feed composition for broiler starter and finisher diets (g/kg as fed).<sup>1</sup>**

Ingredients	Broiler starter diets				Broiler finisher diets			
	Control	T1	T2	T3	Control	T1	T2	T3
Maise germ	528.8	527	540	550.2	550	526	534	576.5
Wheat pollard	104.0	108	97.6	98.9	201.6	200.5	198.2	165.5
Corn oil	24.6	16.3	11.4	4.0	27.2	22.1	15.2	5.4
Fish meal	325.4	0	0	0	191.0	0	0	0
<i>Desmodium</i>	0	82.65	165.3	247	0	55	110	165
Black soldier fly larvae meal	0	247.95	165.3	82.7	0	165	110	55
Limestone	10	10	10	10	22.6	22.6	22.6	22.6
Salt	3.6	3.6	3.6	3.6	3.6	3.6	3.6	3.6
Di-calcium phosphate	0.5	1.0	3.3	3.2	0.5	1.7	2.9	3.3
Broiler premix <sup>2</sup>	2.5	2.5	2.5	2.5	2.5	2.5	2.5	2.5
Mycotoxin binder	0.1	1.0	1.0	1.0	1.0	1.0	1.0	1.0
Total	1000	1000	1000	1000	1000	1000	1000	1000
Calculated values								
Metabolisable energy (kcal/kg)	2,997	3,018	3,021	3,037	3,052	3,053	3,059	3,100
Nitrogen free extracts (%)	43.9	44.1	42.0	42.1	45.2	44.6	43.5	34.0
Analysed nutrient content (% dry matter basis) of experimental diets								
Dry matter	88.9	89.7	89.3	89.8	88.4	89.2	89.5	89.7
Crude protein	22.1	23.1	22.8	21.4	21.5	22.5	22.0	21.0
Ether extracts	6.8	7.3	7.4	8.1	8.4	7.9	8.1	9.2
Crude fibre	3.4	5.7	7.1	7.6	3.1	5.9	7.3	7.8
Ash	9.7	10.1	9.8	9.4	8.7	7.9	7.3	7.5

<sup>1</sup> Control = conventional feed, T1 = 25% *D. intortum*+75%BSFL, T2 = 50% *D. intortum*+50% BSFLM, T3 = 75% *D. intortum*+25% BSFLM.

<sup>2</sup> Broiler premix provided the following per kg of diet: Vitamin A (I.U) 6,250,000, Vitamin D3 (I.U) 1,000,000, Vitamin E (I.U) 15,000, Vitamin K3 (Mg) 1000, Vitamin B1 (Mg) 500, Vitamin B2 (Mg) 2,500, Vitamin B6 (Mg) 2,500, Vitamin B12 (Mg) 10, Pantothenic acid (Mg) 600, Nicotinic acid (Mg) 15,000, Folic acid (Mg) 500, Biotin (Mg) 35, Choline chloride (Mg) 150,000, Iron (Mg) 20,000, Copper (Mg) 2,500, Zinc (Mg) 25,000, Manganese (Mg) 15,000, Iodine (Mg) 600, Cobalt (Mg) 400, BHT (Anti-oxidant, Mg) 125,000.

suspended at 45 cm height over the brooder to provide heat. These bulbs were supplemented with an automated thermostat heater model Xpelair® (WH30, 3 KW Wall Heater; Peterborough, UK). Before the commencement of the experiment, all the chicks were fed on starter mash (conventional feed) purchased from Unga Feeds Limited (Nairobi, Kenya), the largest animal feeds manufacturer in East Africa. The chicks were fed at a rate of at least 125 g per d per chick. Feather sexing was done before the chicks were randomly distributed in 12 pens, each measuring (1.5×1.8×1.5 m) in a poultry house. Sexing was done to ensure that each pen contained 10 chicks (5 females and 5 males). The pens were separated using wooden blocks. A metallic mesh was used as the source of ventilation on the top side of the pens. Each treatment was replicated three times in a completely randomised design. The whole experiment comprised 120 chickens, with 30 chickens in each treatment, including the control.

Clean sawdust was obtained from a local carpentry workshop and spread on polythene papers on the floor of the cages at the height of 5 cm from the ground. After the 7 d brooding period, the chicks were weighed individually to obtain their initial weight before being introduced to starter diets of the BSFLM-DI formulations. The chickens were fed daily between 09:00 and 10:00. The feeding was *ad libitum*, but as a way of monitoring the bird's daily intake, twelve and a half kilograms of each feed treatment was measured daily using a weighing scale (Model; Camry EK 5055-005, manufactured by Zhongshan Camry manufacturer and Training Company limited, Zhongshan Guangdong, China, P.R.). The weight of feed consumed per cage was measured by difference (weight of feed in the bucket the following d during feeding time subtracted from the weight of the feed in the bucket the previous day). Finisher diets containing BSFL and *D. intortum* were provided to the chicks after 21 d. Clean drinking water was provided *ad libitum* using Kenpoly plastic feeders (10 l capacity) per pen until the end of the rearing period when the chickens were isolated for slaughtering. The chickens were maintained at 28±1 °C, relative humidity of 65±5% and a photoperiod of 12:12 (L:D) h light cycle. The temperature was gradually reduced by 2 °C every week up to week 4. It was then maintained at 24 °C. Waterproof universal serial bus temperature/humidity data loggers were placed strategically inside the poultry house to monitor the internal conditions of the rearing facility. All the chickens were vaccinated against Newcastle disease on the fourteenth day.

#### *Slaughtering and carcass dissection*

The performance trial lasted 42 d, after which the chickens were feed restricted overnight. Five chickens from each replicate were randomly selected for meat quality evaluation. The birds were sacrificed humanely by a professional using procedure reviewed and approved by

the Institutional Animal Care and Use Committee (IACUC). The birds were first stunned electrically before slaughtering. The chickens were then scalded at 75 °C in a water bath for about 30 seconds before defeathering. The dressed chickens were later eviscerated to remove the internal organs, and the wings were removed by cutting anteriorly, severing at the humero-scapular joint. The cuts were made through the rib head to the shoulder girdle, and the back was removed intact by pulling anteriorly. The internal organs such as the liver, gizzards, heart and spleen were weighed. The carcasses were packaged in Ziploc plastic bags measuring 28×40 cm and frozen at -20 °C for sensory and physicochemical analysis.

#### **Sensory evaluation of the meat**

##### *Preparation of meat samples*

Chicken thigh muscles were used for all the treatments. The samples were then deskinning using sharp knives by tearing a part of the skin and then pulling it off. The deskinning whole thigh muscles samples were carefully wrapped in aluminium foils to avoid direct contact with the cooking water. They were then put in an aluminium cooking pot; water was added to cover the pieces and let to cook for 25 minutes. The cooking was done using an ordinary kitchen gas stove of the model (6 kg LPG meko; Allied East Africa, Limited Nairobi, Kenya). The heat-treated muscles were then removed from the water, unwrapped, and then cut crosswise into representative mouth-sized pieces.

Consumer testing was conducted at the Food Engineering Laboratory, Faculty of Food Science and Technology of the Jomo Kenyatta University of Agriculture and Technology (Nairobi, Kenya). A panel of 40 self-declared chicken eaters of mixed gender picked randomly were used for the evaluation. Five testing stations were set up at a distance of at least 2 metres apart. Chicken meat samples were placed on disposable white plastic plates partitioned into four sections (a section for every treatment). Each treatment was assigned a three-digit code indicating a specific sample: 325 – Treatment 1, 601 – Treatment 2, 225 – Treatment 3, 409 – Control. A glass of water was provided to panellists to rinse their mouth after tasting each treatment. The following attributes were assessed: meat colour, flavour (smell associated with cooked meat), taste (taste associated with cooked meat), tenderness (fibres perceived during mastication), juiciness (water perceived during mastication), and overall liking (overall satisfaction and desire to eat again). Panellists were guided throughout the process using a modified five-point hedonic scale (1 = dislike extremely, 3 = neither like nor dislike, and 5 = like extremely) (Damaziak *et al.*, 2019).

## Meat colour

Broiler meat colour characteristics were determined using the CIELAB method, where the  $L^*$ ,  $a^*$  and  $b^*$  values were determined as illustrated by Qiao *et al.* (2001). The chicken thigh samples were defrosted overnight at 4 °C, and the lean muscles were analysed using the CIE colourimeter (Minolta®, Osaka, Japan). The  $L^*$ ,  $a^*$  and  $b^*$  values were recorded for each portion by taking the colour for three arbitrary places on the carcass. Finally, the recorded values were computed and analysed.

## Water holding capacity

The meat water holding capacity was obtained from the breast meat samples. The samples were thawed overnight in a chiller at 4 °C using a modified filter paper press method. Samples weighing 0.3 g (initial weight) were obtained from the thawed meat samples and covered with a Whatman filter paper no.42 (Kobian Industries Ltd, Nairobi, Kenya). The samples were then pressed using a rheometer with the conditions 4 kg for 20 minutes. The final weight of the meat was then obtained. The percentage of free water was calculated using the following formula:

$$\% \text{ Free water} = \frac{\text{Initial weight} - \text{Final weight}}{\text{Initial weight}} \times 100$$

$$\text{Water holding capacity} = 100 - \% \text{ Free water}$$

## Cooking loss determination

Cooking loss was determined by transferring frozen breast muscles into a 4 °C chiller to thaw overnight, from which samples weighing 60 g were carefully obtained, weighed and recorded as initial weight ( $W_1$ ). The samples were then put in plastic Ziplock bags, labelled and then placed in a digital electric water bath which had been pre-heated to 80 °C and cooked for 20 minutes. The cooked samples were then removed from the plastic bags and placed in an ice slurry for 2 minutes to cool down. The samples were then reweighed individually and recorded as  $W_2$  (cooked weight). The experiment was repeated 3 times, and the cooking loss was obtained using the following equation:

$$\text{Cooking loss (\%)} = \frac{W_1 - W_2}{W_1} \times 100$$

## Moisture content

Moisture content was determined using the air-oven drying method. Breast muscle samples stored at -20 °C in tightly closed containers were left to thaw overnight. They were then removed from the freezer (at 4 °C) and placed on laboratory benches for 4 hours to warm up to room temperatures. Samples weighing 15 g ( $I_w$ ) of each treatment diet (in triplicates) were weighed using a sensitive scale model and spread evenly on aluminium foil. The samples

were then placed in an oven model pre-heated to 75 °C and left undisrupted for 48 h. Using tongs, the samples were removed individually from the oven and placed in a desiccator for 30 minutes to cool at room temperatures. They were then reweighed and recorded as final weight ( $F_w$ ). The following formula was used to calculate the percentage moisture.

$$\% \text{ Moisture} = (F_w - I_w) \times 100$$

## Determination of pH

The pH of the breast meat samples was determined using a portable digital pH meter model (Eutech Bench pH Meter, Trulab, Mumbai, India). Before each use, the meter was calibrated using a standard buffer solution of pH of 4.0 and 7.0 and then rinsed with distilled water after taking each sample. Breast meat samples were used for this analysis. The samples were first thawed overnight in a chiller at 4 °C and then deskinning. Readings were obtained by probing an electrode attached to the pH meter after 24 h at three random points on the chicken breast meat samples for 30 s. The samples were measured in triplicates, and average PH values were calculated separately for every treatment and repeated after 24 h (Santos-Silva, 2001).

## Fatty acid composition

10 mg of dry ground chicken meat samples were used. The compositions were analysed as fatty acid methyl esters as described by (Christie, 1993). 15 mg/ml of sodium methoxide was prepared in dry methanol, and (500 µl) of the solution was added to the samples. The samples were vortexed for 1 min, sonicated for 5 min, and then incubated at 60 °C for 1 h; these were thereafter quenched by adding 100 µl deionised water followed by vortexing again for another 1 min. The resulting methyl esters were extracted using gas chromatography (GC)-grade hexane (1000 µl; Sigma-Aldrich, St. Louis, MO, USA) and centrifuged at 14,000 rpm for 5 min. The supernatant was dried over anhydrous  $\text{Na}_2\text{SO}_4$  and analysed (1.0 µl) by GC-MS on a 7890A gas chromatograph linked to a 5975 C mass selective detector (Agilent Technologies Inc., Santa Clara, CA, USA). The GC was fitted with a (5%-phenyl)-methyl-polysiloxane (HP5 MS) low bleed capillary column (30 m × 0.25 mm i.d., 0.25 µm; J&W, Folsom, CA, USA). Helium at a flow rate of 1.25 ml/min served as the carrier gas. The oven temperature was programmed from 35 °C (5 min) with an increase rate of 10 °C/min to 285 °C (20.4 min). The mass selective detector was maintained at an ion source temperature of 230 °C and a quadrupole temperature of 180 °C. Electron impact mass spectra were obtained at the acceleration energy of 70 eV. Fragment ions were analysed over 40-550 m/z mass range in the full scan mode. The filament delay time was set at 3.3 min. Serial dilutions of the authentic standard methyl octadecenoate (0.2-125 ng/µl) and hexanal (1-280 ng/µl)

were analysed by GC-MS in full scan mode to generate a linear calibration curve (peak area vs concentration) which gave a coefficient of determination  $R^2=0.9997$  and  $0.9997$  for methyl octadecenoate and hexanal. These regression equations were used to evaluate the different fatty acids and volatile organic compounds, respectively. A Hewlett-Packard (HP Z220 SFF IntelXeon, Hewlett-Packard, Palo Alto, CA, USA) workstation equipped with ChemStation B.02.02.acquisition software (Hewlett-Packard) was used. The mass spectrum was generated for each peak using the Chemstation integrator set as follows: initial threshold=5, initial peak width=0.1, initial area reject=1, and shoulder detection=on. The compounds were identified by comparing mass spectral data and retention times with authentic standards and reference spectra published by the library-MS databases: National Institute of Standards and Technology 05, 08, and 11. The meat samples were analysed in triplicate, with each replicate collected from a different chicken.

### Cholesterol

This was done using high-pressure liquid chromatography (HPLC) by a method described by (Almeida *et al.*, 2006), which involves two main steps: saponification and cholesterol measurement. Saponification involved the addition of potassium chloride, 50% potassium hydroxide and 95% and 5% ethanol absolute and distilled water, respectively, to the sample. The sample was heated in a water bath for complete solubilisation at 60 °C for 10 min. This was followed by the addition of 5 ml distilled ice-cold water, and the sample cooled in an ice bath. The non-saponifiable fraction was extracted three times using 10 ml of hexane. Aliquots of hexane extracts (3 ml) were dried under a vacuum. The extract obtained from saponification was dissolved in 3 ml of acetonitrile-isopropanol solution (70:30, v/v) and analysed with normal phase HPLC using unmodified silica gel as a stationary phase. The mobile phase consisted of acetonitrile and isopropanol (70:30, v/v). The column used will be C18 ODS from Phenomenex® in the reverse phase. Cholesterol identification was done by co-chromatography and by comparing sample retention times with standard retention times. Quantification for each sample was achieved by using a standard curve for the standard solutions of different concentrations.

### Data analysis

All analyses were conducted using the R environment for statistical computing (version 4.0.2) (R Core Team, 2020). For each sensory attribute (colour, flavour, juiciness, tenderness, taste, and overall acceptability), the chi-square test was used to compare the percentages of panellists across the three score levels (dislike extremely, neither like nor dislike and like extremely). Using two R packages called 'FactoMineR' (Lê *et al.* 2008) and 'Factoextra' (Kassambara

and Mundt, 2020), we performed principal component analysis (PCA) to visualise the different types of diet and the relationship existing among the different attributes. However, data from the physical property parameters of the different meat types were normally distributed (Shapiro-Wilk test:  $P>0.05$ ), and their variances were similar (Bartlett's test:  $P>0.05$ ). Therefore, in this study, we employed the analysis of variance (ANOVA) followed by the Student-Newman-Keuls (SNK) post-hoc tests (using the 'agricolae' R package (De Mendiburu, 2020)) to see whether these parameters were different across the different meats. Due to sample size, fatty acid data were analysed with non-parametric tests. The Kruskal-Wallis H test was used to assess differences in monounsaturated fatty acids (MUFA), saturated fatty acids (SFA) and cholesterol between treatments. All the significances were detected at  $P<0.05$ .

## 3. Results

### Sensory properties of the meat

Results of the sensory properties showed that T1 was more preferred for its flavour (Figure 1B) and its tenderness (Figure 1D). Treatment T2 was preferred for its juiciness (Figure 1C), while T3 was preferred for its colour (Figure 1A), flavour (Figure 1B) and taste (Figure 1E). Consequently, T3 had the highest overall acceptability (Figure 1F). According to the proportion test, no significant differences were detected between treatments within the same category at 5%. Overall, the sensory attributes were sampled adequately (Kaiser-Meyer-Olkin $>0.8$ ), and Bartlett's sphericity test revealed a significant positive correlation between the different attributes ( $P<0.0001$ ).

### Physicochemical properties of the meats

The meat colour analysis results revealed that meats from the different treatments were not significantly different in their lightness ( $P=0.692$ ). However, significant differences were found in their redness and yellowness ( $P<0.001$ ;  $P<0.001$ ). The control treatment recorded the highest value for redness, followed by T1, then T2, and T3 had the lowest value. T3 recorded the highest value for yellowness, followed by T2 and T1. The control had the lowest value for yellowness and was not significantly different from T1 (Table 2).

We found that moisture ( $F_{3,32}=13.2$ ,  $P<0.0001$ ), water holding capacity ( $F_{3,32}=6.13$ ,  $P=0.002$ ), cooking loss ( $F_{3,32}=29.73$ ,  $P<0.0001$ ), and pH ( $F_{3,32}=20.23$ ,  $P<0.0001$ ) were significantly different across the different meat types. Control and T3 had respectively higher and lower moisture content than T1 and T2 (Figure 2A). The water holding capacity was significantly lower in control than T1, T2, and T3 (Figure 2B). The cooking loss was higher in control and significantly reduced in T1, T2 and T3, respectively (Figure

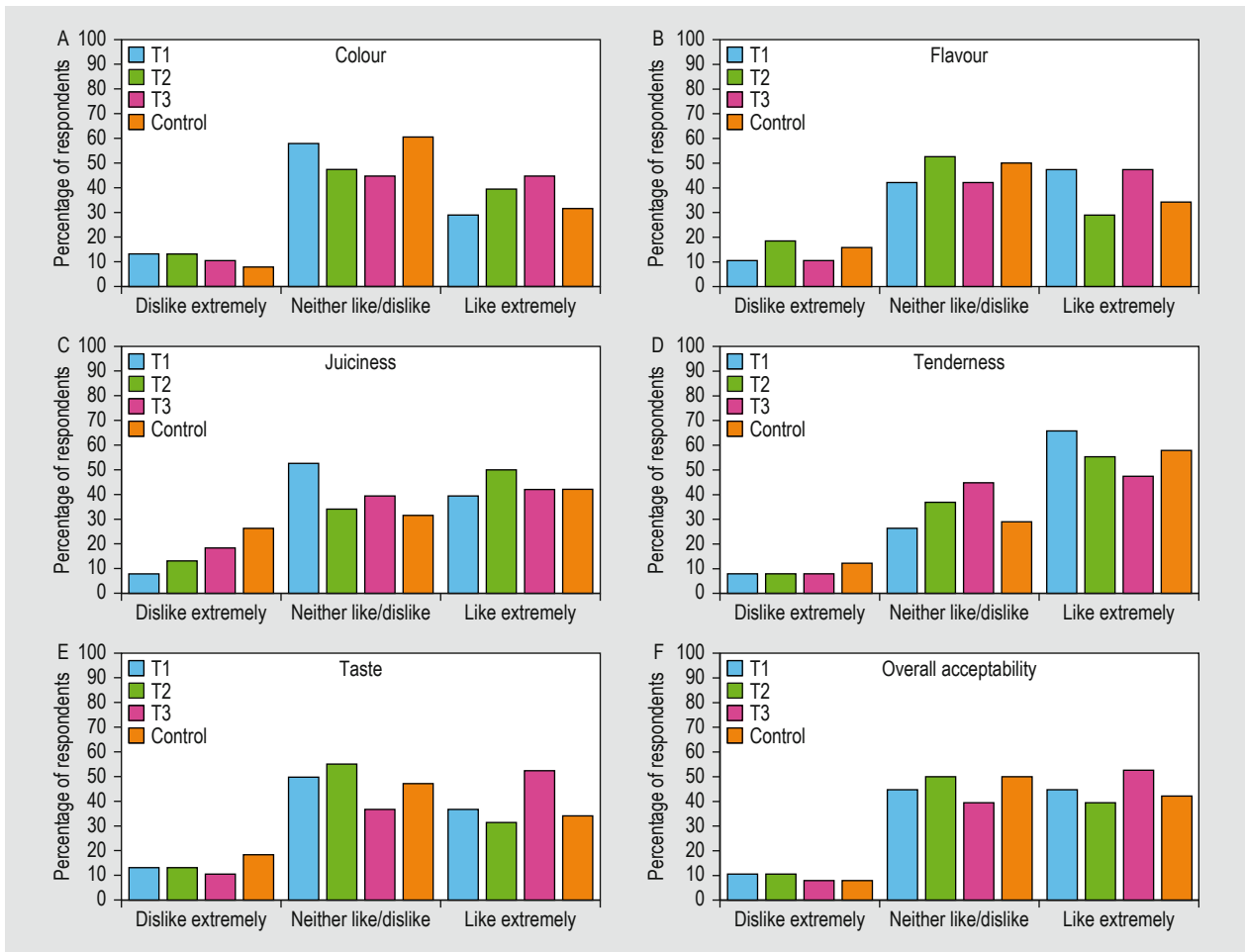


Figure 1. Percentage of response to each attribute score across the various type of diets. Control = conventional feed, T1 = 25% *D. intortum*+75% BSFLM, T2 = 50% *D. intortum*+50% BSFLM, T3 = 75% *D. intortum*+25% BSFLM.

Table 2. Effect of black soldier fly larvae and *Desmodium* based diets on the meat colour of broiler chicken.

Treatment <sup>1</sup>	L (Lightness)	a* (Redness)	b*(yellowness)
Control	53.5 ±0.57 a	5.21±1.7 d	4.53±0.1 a
T1	53.6 ±0.1 a	4.93±1.6 c	5.16±0.4 a
T2	53.3±0.17 a	4.42±1.5 b	5.32±0.4 b
T3	53.5±0.23 a	4.13±1.4 a	7.53±0.4 c
P-value	0.692	<0.001	<0.001

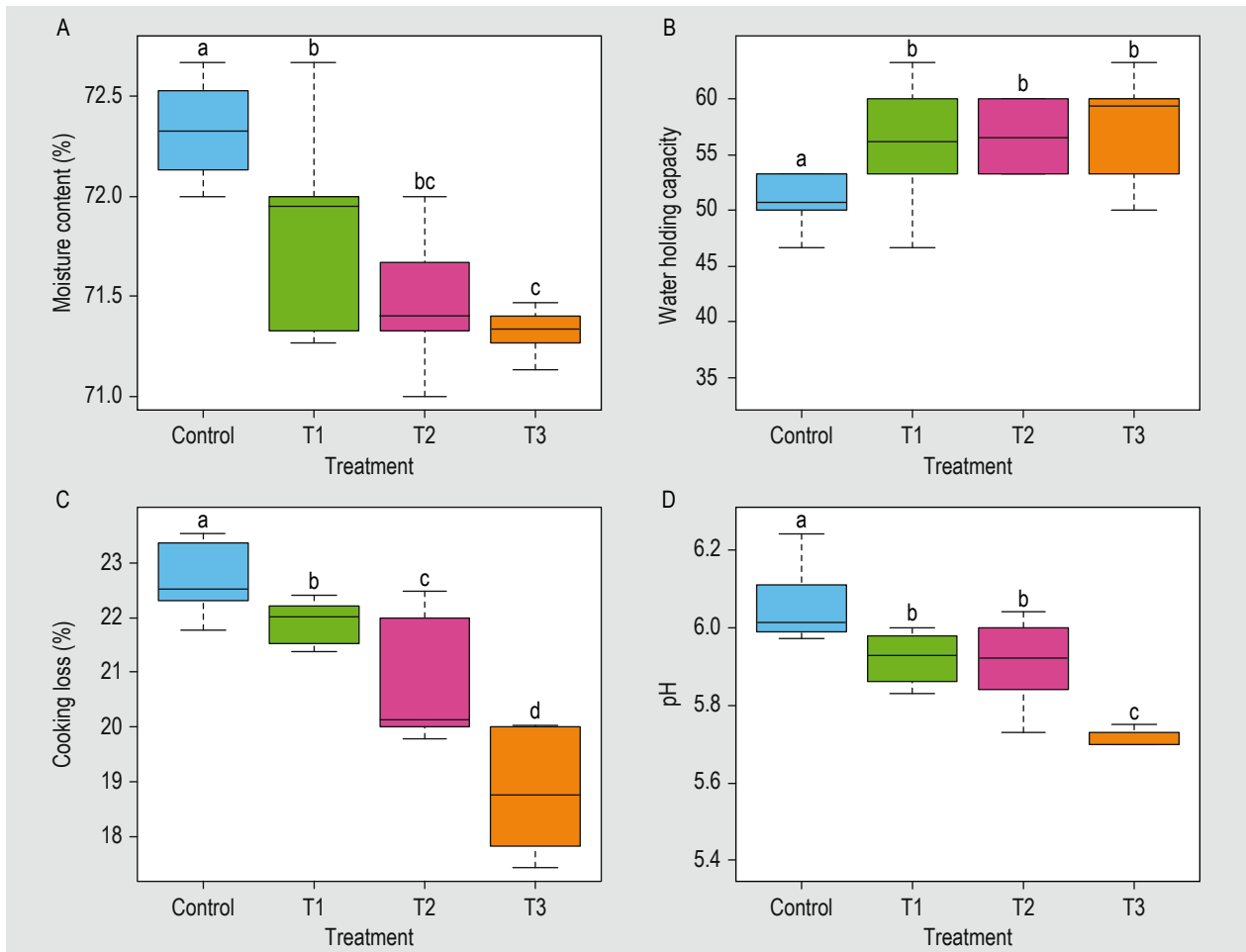
<sup>1</sup> Control = conventional feed, T1 = 25% *D. intortum*+75% BSFLM, T2 = 50% *D. intortum*+50% BSFLM, T3 = 75% *D. intortum*+25% BSFLM. Data is expressed as means (%) ± standard deviation. Means with different letters within each column are significantly different at  $P < 0.05$  (n=3). Change in colour ( $\Delta E$ ); Lightness (L\*); red/green colour (a\*); yellow/blue colour (b\*).

2C). The pH was higher in control and lower in T3, whereas in T1 and T2, this parameter was similar (Figure 2D).

The fatty acid and cholesterol composition of the meat in the various treatments is presented in Table 3. Meat samples from T1 and T2 had the highest concentration of

MUFA, followed by control and lowest in T3. There were variations in terms of SFA whereby T1 and T2 recorded the highest values followed by control then T3. The cholesterol levels were higher in T1, T3, control followed by T2. However, in all these groups, no significant differences were detected at 5%.





**Figure 2.** Boxplot illustrating the effect of black soldier fly larvae meal (BSFLM) and *Desmodium intortum* based diets on (A) moisture content, (B) water holding capacity, (C) cooking loss, and (D) pH, on broiler meat. The ends of boxplot whiskers represent the minimum and maximum of all the data. Control = conventional feed, T1 = 25% *D. intortum*+75% BSFLM, T2 = 50% *D. intortum*+50% BSFLM, T3 = 75% *D. intortum*+25% BSFLM. Boxes with different letters are significantly different based on the ANOVA followed by SNK post-hoc tests.

The principal component analysis biplot (Figure 3) obtained from the sensory and the physicochemical parameters data clustered the four meat types (control, T1, T2, and T3), illustrating the importance of these parameters in meat differentiation. The first two dimensions explained 56.2% of the total variation. Dimension 1 mainly was associated with fatty acids (e.g. butanoic, eicosanoic and dodecanoic acids) and accounted for 39.3% of the total variation. Dimension 2, which accounted for 16.9%, was correlated with redness, cooking loss, moisture and pH.

#### 4. Discussion

The combination of *D. intortum* and BSFLM as a protein source in formulating broiler chicken feeds affects various sensory attributes of the meat. Treatment T3, which has the highest *D. intortum* rate, had the highest overall acceptability. Although few studies have been conducted on the sensory effects of adding legume forages such as

*D. intortum* in combination with BSFL in broiler diets, the increased sensory appeal of the *D. intortum*-BSFLM based diets is unique and corroborates previous studies (Cullere *et al.*, 2017; Ponte *et al.*, 2005; Secci *et al.*, 2018). In addition, the combination of taste, odour, juiciness, and mouthfeel affects the meat's sensory properties; this confirms the reduced moisture content and higher water holding capacity of chickens fed with *D. intortum*-BSFLM meat samples (Zhao *et al.*, 2013).

In our study, the physical attributes of meat from the various treatments differed. An increase in *D. intortum*-BSFLM mixture has a significant effect on the physical attributes of the meat, particularly the moisture retention, pH and water holding capacity confirming previous findings (Reicks *et al.*, 2011). The pH value is an indicator of change in glycogen decomposition rate into lactic acid in the muscles. The rapid decline of pH also affects the colour and the water holding capacity. This could be ascribed to the rapid growth and

**Table 3. Effect of black soldier fly larvae (BSFL) and *D. intortum* based diets on the fatty acids profile (mg/kg) in broiler chicken breast meat.<sup>1,2</sup>**

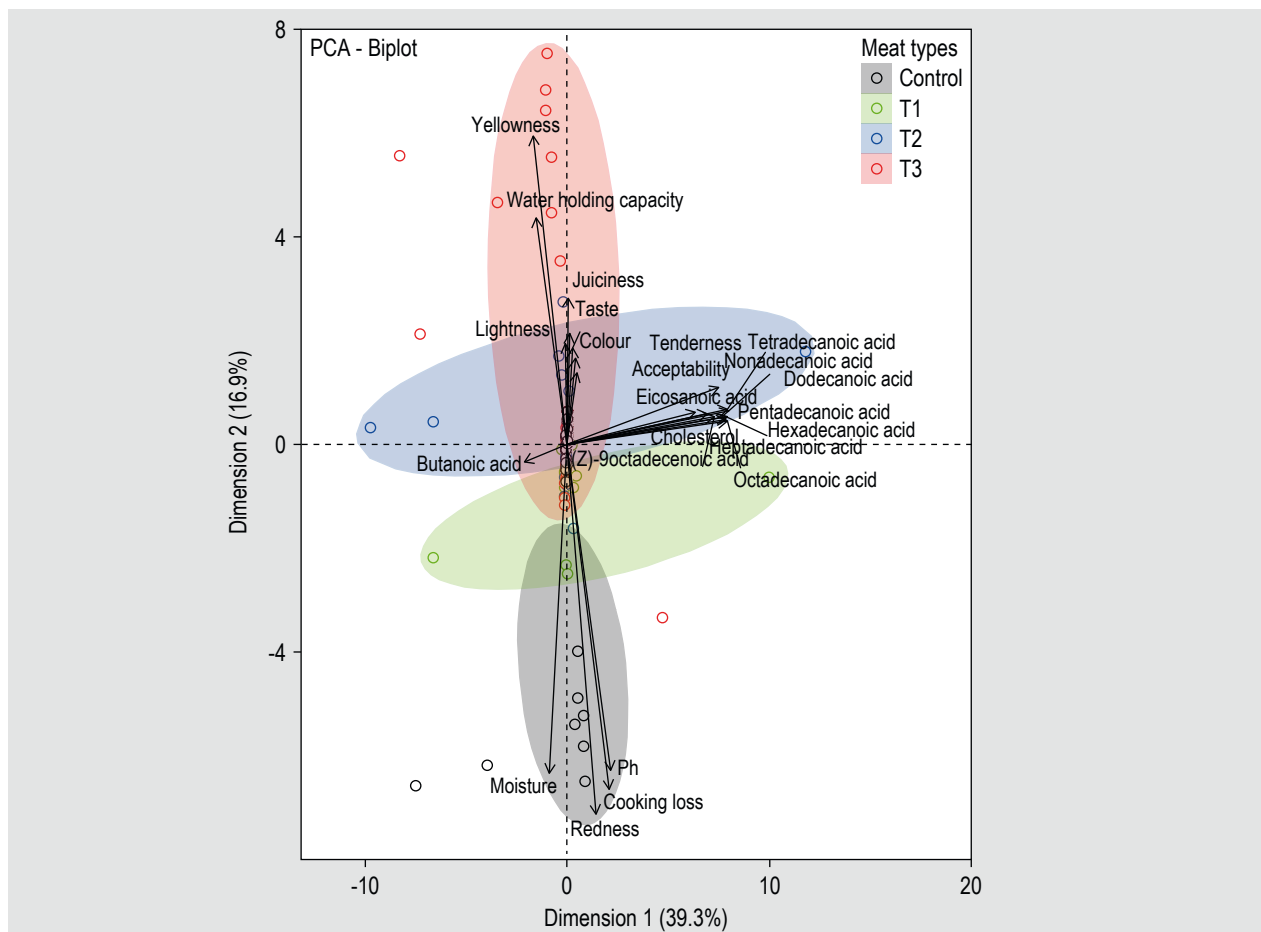
Type of fatty acid <sup>3</sup>	tR (min) <sup>4</sup>	Compound name	T1	T2	T3	Control	P
MUFA	25.03	(Z)-9octadecenoic acid	17.48±15.16	15.32±12.80	2.77±0.23	8.56±5.35	0.935
SFA	25.03	butanoic acid	0.36±0.29	0.36±0.21	0.10±0.00	0.11±0.03	0.320
SFA	18.92	dodecanoic acid	0.31±0.19	0.19±0.09	0.10±0.01	0.14±0.05	0.435
SFA	27.00	eicosanoic acid	4.78±3.85	6.08±4.69	0.92±0.17	2.58±1.69	0.569
SFA	24.31	heptadecanoic acid	0.15±0.11	0.05±0.02	0.04±0.01	0.06±0.02	0.621
SFA	23.35	hexadecanoic acid	191.67±113.36	93.67±24.87	82.04±8.34	100.87±28.59	0.692
SFA	26.15	nonadecanoic acid	0.01±0.01	0.00±0.00	0.00±0.00	0.00±0.00	0.692
SFA	25.77	octadecanoic acid	195.96±129.12	92.99±32.14	74.53±7.37	104.56±35.19	0.764
SFA	22.32	pentadecanoic acid	0.10±0.08	0.05±0.03	0.02±0.00	0.04±0.01	0.544
SFA	21.24	tetradecanoic acid	16.12±10.29	8.51±6.32	5.37±0.62	6.85±2.19	0.634
ΣSFA			23.91±9.28	45.50±23.77	22.43±8.38	18.13±6.41	0.814
	35	Cholesterol	274.76±229.45	58.99±19.40	88.93±18.36	88.28±8.62	0.647

<sup>1</sup> Control = conventional feed, T1 = 25% *D. intortum*+75% BSFLM, T2 = 50% *D. intortum*+50% BSFLM, T3 = 75% *D. intortum*+25% BSFLM.

<sup>2</sup> Mean ± SE (standard error) of triplicate determinations.

<sup>3</sup> MUFA = monounsaturated fatty acids; SFA = saturated fatty acids.

<sup>4</sup> tR = retention time.



**Figure 3. PCA showing the connection between sensory and physicochemical attributes. Control = conventional feed, T1 = 25% *D. intortum*+75% BSFLM, T2 = 50% *D. intortum*+50% BSFLM, T3 = 75% *D. intortum*+25% BSFLM.**

hypertrophy of muscles in broilers, especially the breast (Popova *et al.*, 2020). Studies on broiler meat quality report different values for the pH in breast meat. Although the pH was affected by the inclusion of various proportions of *D. intortum*-BSFLM in the diet, values were within the normal range. However, pH values were significantly lower in the group consuming *D. intortum*-BSFLM meals. This could be explained by the fact that BSFL are rich in lauric acid, which increases fatty acid levels (Cullere *et al.*, 2016, 2019; Zeiger *et al.*, 2017). We do not have any record of the effect of *D. intortum* on poultry meat acidity, but our results suggest that its inclusion tend to lower the pH values in the broilers meat.

Our study also demonstrated a direct relationship between pH values, the water holding capacity and meat colour. The visual appearance in terms of colour is affected by dietary inclusion, which could impact consumers' choices. No significant differences were found in meat lightness; however, the higher the *D. intortum* content in the diet, the higher the yellowness and the lower the redness. Our results are in line with Cullere *et al.* (2016), who reported a dose-dependent effect of BSF defatted meal on the redness index of quail breast with a decrease of its values in the birds consumed higher content of the meal. The increased yellowness could be explained by the increase in beta-carotene or other pigments such as chlorophyll and xanthophyll present in *D. intortum* (Smith *et al.*, 2002). Our results are in agreement with İpçak and Alçiçek (2018), who reported that adding Capsicum oleoresin, carvacrol, cinnamaldehyde and their mixtures in broiler diets improved the sensory, physical and chemical properties of breast and leg meat. Capsicum oleoresin, carvacrol, cinnamaldehyde and their mixtures contain certain functional compounds and desirable pigments (carotenoids, tocopherols, capsaicinoids (capsaicin) also found in *D. intortum*. Compounds such as antioxidants, polyphenols, flavonoids, anthocyanins and xanthophylls could have played a role in the improved meat quality attributes as pointed by İpçak and Alçiçek (2018).

Dietary fatty acid composition is critical in determining the fatty acid profile of broiler meat (Rymer and Givens, 2005; Schiavone *et al.*, 2007, 2010). The inclusion of BSFLM and *D. intortum* influenced the fatty acid profile of the meat. The increase in MUFA and SFA could be ascribed to the fact that BSF meals contain a significant amount of lauric acid, as previously suggested (Cullere *et al.*, 2019; Popova *et al.*, 2020; Schiavone *et al.*, 2017, 2019).

Fat content also affects the palatability and flavour of the meat to a great extent, and small proportions of oxidised fatty acids such as those found in the BSFL could have significantly altered the flavour of the meat (Belitz *et al.*, 2009; Min and Ahn, 2014).

We did not detect polyunsaturated fatty acids PUFAs in any of the treatments; however, BSFLM are known to be relatively scarce in PUFAs (Ewald *et al.*, 2019). De Souza Villela *et al.*, (2021) reported that an increase use of dietary BSFLM at 20% led to a significant decrease by 37.4% in a total quantity of PUFAs. However in our study we used higher rates of BSFLM (75%, 50% and 25% BSFLM). The cholesterol levels in T1 was particularly high (75%BSFLM:25%DI) and relatively low in other treatments. Our results support previous studies which demonstrated that inclusion of legumes and forages in broiler bird diets reduce cholesterol concentration in the animals' blood and meat, through improved feed conversion efficiency and improved digestion and metabolism (Jiang *et al.*, 2012; Krauze and Grela, 2010; Ponte *et al.*, 2005; Purwin *et al.*, 2014). Higher lipid content implies higher risks of cardiovascular diseases (Schaefer, 2002). Our results therefore suggest that meats from T3 (75% *D. intortum*+25% BSFLM) may have additional health benefits.

## 5. Conclusion and recommendations

The current study shows that the inclusion of *D. intortum* and BSFLM in poultry diets affects the sensory and physicochemical qualities of the meat. The PCA analysis indicated that overall, the tested meats were distinct in their sensory and physicochemical properties. T3 and control meats were divergent, whereas T1 and T2 were at the interface between the two. The variations in physicochemical properties may account for the difference in organoleptic perception for meat from chicken feed with *D. intortum*-BSFLM, especially T3, which could be compared to free-range chicken 'kienyeji', usually more preferred due to its perceived superior taste (Omondi, 2017). Further research should focus on feed modulation in relation to consumers' preference and potential health benefits.

## Acknowledgements

Financial support for this research was provided by the Push-Pull for Sub-Saharan Africa Project funded by Biovision Foundation, Switzerland. The authors of this study also acknowledge support from the Netherlands Organization for Scientific Research, WOTRO Science for Global Development (NWO-WOTRO) (ILIPA – W 08.250.202), the Canadian International Development Research Centre (IDRC), and the Australian Centre for International Agricultural Research (ACIAR) (INSFEED – Phase 2: Cultivate Grant No. 108866-001) and the Rockefeller Foundation (SiPFeed – Grant No. 2018 FOD 009) through the International Centre of Insect Physiology and Ecology (*icipe*).

We also gratefully acknowledge the *icipe* core funding provided by DFAC of the United Kingdom, the Swedish International Development Cooperation Agency (SIDA),

the Swiss Agency for Development and Cooperation (SDC), the Federal Ministry for Economic Cooperation and Development (BMZ), Germany, and the Kenyan Government. However, the views expressed herein do not necessarily reflect the official opinions of the donors.

The authors gratefully acknowledge Isaiah E. Rachami, Faith Wamurango Nyamu, Shem Ondiaka, Joshua M. Wambua, Claudia Munuhe, and Diana Kemunto for their technical support in the laboratory and for providing dried black soldier fly larvae produced at *icip*.

## Conflict of interest

The authors declare no conflict of interest. The funders had no role in the design of the study, in the collection, analyses, or interpretation of data, in the writing of the manuscript, or in the decision to publish the results.

## References

- Abdullah, N.S., 1974. The nutritive value of some Kenya feedstuffs and the effect of protein and energy rich concentrate supplementation on the utilization of *Chloris gayana* tray by wether sheep. PhD-thesis, Department of Food Science, Nutrition and Technology, University of Nairobi, Nairobi, 286 pp.
- Albrecht, A., Hebel, M., Mittler, M., Hurck, C., Kustwan, K., Heitkönig, B., Bitschinski, D., Kreyenschmidt, J. and Lobato, L., 2019. Influence of different production systems on the quality and shelflife of poultry meat: a case study in the German sector. *Journal of Food Quality*, Article ID: 3718057. <https://doi.org/10.1155/2019/3718057>
- Alex, S., Varela, M. and Gonc, A.A., 2017. Quality characteristics of broiler chicken meat from free-range and industrial poultry system for the consumers. *Journal of Food Science and Technology* 54: 1818-1826. <https://doi.org/10.1007/s13197-017-2612-x>
- Almeida, J.C., Perassolo, M.S., Camargo, J.L., Bragagnolo, N. and Gross, J.L., 2006. Fatty acid composition and cholesterol content of beef and chicken meat in Southern Brazil. *Revista Brasileira de Ciências Farmacêuticas* 42(1): 109-117. <https://doi.org/10.1590/S1516-93322006000100012>
- Association of Official Analytical Chemists (AOAC), 1990. Official methods of analysis of the Association of Analytical Chemists International. Association of Official Analytical Chemists, Gaithersburg, MD, USA.
- Association of Official Analytical Chemists (AOAC), 2002. Official methods of analysis of the Association of Analytical Chemists International. Association of Official Analytical Chemists, Gaithersburg, MD, USA.
- Belitz, H.D., Grosch, W. and Schieberle, P., 2009. Food chemistry. In Belitz, H.D., Grosch, W. and Schieberle, P. (eds.) Meat, 4<sup>th</sup> edition. Vol. 12. Springer-Verlag, Berlin, Germany, pp. 605-608.
- Bett, H.K., Musyoka, M.P., Peters, K.J. and Bokelmann, W., 2012. Demand for meat in the rural and urban areas of Kenya: a focus on the indigenous chicken. *Economics Research International*, Article ID: 401472. <https://doi.org/10.1155/2012/401472>
- Christie, W.W., 1993. Preparation of ester derivatives of fatty acids for chromatographic analysis. *Advances in Lipid Methodology* 2: 69-111.
- Cullere, M., Tasoniero, G., Giaccone, V., Acuti, G., Marangon, A. and Zotte, A.D., 2017. Black soldier fly as dietary protein source for broiler quails: meat proximate composition, fatty acid and amino acid profile, oxidative status and sensory traits. *Animal* 12(3): 640-647. <https://doi.org/10.1017/S1751731117001860>
- Cullere, M., Tasoniero, G., Giaccone, V., Claeys, E., De Smet, S. and Zotte, A.D., 2016. Black soldier fly as dietary protein source for broiler quails: apparent digestibility, excreta microbial load, feed choice, performance, carcass and meat traits. *Animal* 10(12): 1923-1930. <https://doi.org/10.1017/S1751731116001270>
- Cullere, M., Woods, M.J., Van Emmenes, L., Pieterse, E., Hoffman, L.C. and Dalle Zotte, A., 2019a. *Hermetia illucens* larvae reared on different substrates in broiler quail diets: effect on physicochemical and sensory quality of the quail meat. *Animals* 9: 525. <https://doi.org/10.3390/ani9080525>
- Cullere, M.G.T., Giaccone, V., Acuti, G., Marangon, A. and Dalle Zotte, A., 2018. Black soldier fly as dietary protein source for broiler quails: meat proximate composition, fatty acid and amino acid profile, oxidative status and sensory traits. *Animal* 12(3): 640-647. <https://doi.org/10.1017/S1751731117001860>
- Dabbou, S., Gai, F., Biasato, I., Capucchio, M.T., Biasibetti, E., Dezzutto, D., Meneguz, M., Plachà, I., Gasco, L. and Schiavone, A., 2018. Black soldier fly defatted meal as a dietary protein source for broiler chickens: effects on growth performance, blood traits, gut morphology and histological features. *Journal of Animal Science and Biotechnology* 9: 49. <https://doi.org/10.1186/s40104-018-0266-9>
- Damaziak, K., Stelmasiak, A., Riedel, J., Zdanowska-Sasiadek, Z., Bucfaw, M., Gozdowski, D. and Michalczyk, M., 2019. Sensory evaluation of poultry meat: a comparative survey of results from normal sighted and blind people. *PLoS ONE* 14(1): e0210722. <https://doi.org/10.1371/journal.pone.0210722>
- De Mendiburu, F., 2020. *Agricolae*: statistical procedures for agricultural research. R package version 1.3-3. Available at: <https://CRAN.R-project.org/package=agricolae>
- de Souza Vilela, J., Alvarenga, T.I.R.C., Andrew, N.R., McPhee, M., Kolakshyapati, M., Hopkins, D.L. and Ruhnke, I., 2021. Technological quality, amino acid and fatty acid profile of broiler meat enhanced by dietary inclusion of black soldier fly larvae. *Foods* 10: 297. <https://doi.org/10.3390/foods10020297>
- Ewald, N., Vidakovic, A., Langeland, M., Kiessling, A., Samples, S. and Lalander, C., 2019. Fatty composition of black soldier fly larvae (*Hermetia illucens*) – possibilities and limitations for modification through diet. *Waste Management* 102: 40-47. <https://doi.org/10.1016/j.wasman.2019.10.014>
- Federation of Animal Science Societies (FASS), 2010. Guide for the care and use of agricultural animals in research and teaching. FASS, Champaign, IL, USA.
- Gariglio, M., Dabbou, S., Biasato, I., Capucchio, M.T., Colombino, E., Hernández, F., Madrid, J., Martínez, S., Gai, F., Caimi, C., Oddon, S.B., Meneguz, M., Trocino, A., Vincenzi, R., Gasco, L. and Schiavone, A., 2019. Nutritional effects of the dietary inclusion of partially defatted *Hermetia illucens* larva meal in Muscovy duck. *Journal of Animal Science and Biotechnology* 10: 37.

- Gross, W.B. and Siegel, H.S., 1983. Evaluation of the Heterophil/Lymphocyte ratio as a measure of stress in chickens. *Avian Diseases* 27(4): 972-979.
- Heinritz, S.N., Hoedtke, S., Martens, S.D., Peters, M. and Zeyner, A., 2012. Evaluation of ten tropical legume forages for their potential as pig feed supplement. *Livestock Research for Rural Development* 24(1). <http://www.lrrd.org/lrrd24/1/hein24007.htm>
- İpçak, H.H. and Alçiçek, A., 2018. Addition of Capsicum oleoresin, Carvacrol, Cinnamaldehyde and their mixtures to the broiler diet II : effects on meat quality. *Science and Technology* 60: 9. <https://doi.org/10.1186/s40781-018-0165-9>
- Jiang, J.F., Song, X.M., Huang, X., Zhou, W.D., Wu, J.L., Zhu, Z.G., Zheng, H.C. and Jiang, Y.Q., 2012. Effects of Alfalfa meal on growth performance and gastrointestinal tract development of growing ducks. *Asian-Australasian Journal of Animal Science* 25(10): 1445-1450. <https://doi.org/10.5713/ajas.2012.12190>
- Kassambara, A. and Mundt, F., 2020. Factoextra: extract and visualize the results of multivariate data analyses. R-package version 1.0.7. Available at: <https://CRAN.R-project.org/package=factoextra>
- Krauze, M. and Grela, E.R., 2010. Effects of an alfalfa concentrate in turkey diets on performance and some blood parameters. *Archiv Fur Geflugelkunde* 74: 226-232. <https://doi.org/10.1016/j.psj.2019.11.030>
- Lê, S., Josse, J. and Husson, F., 2008. FactoMineR: an R package for multivariate analysis. *Journal of Statistical Software* 25(1): 1-18.
- Lichovniková, M., Jandásek, J., Jüzl, M. and Dračková, E., 2009. The meat quality of layer males from free range in comparison with fast growing chickens. *Czech Journal of Animal Science* 54(11): 490-497. <https://doi.org/10.17221/3/2009-CJAS>
- Liland, N.S., Biancarosa, I., Araujo, P., Biemans, D., Bruckner, C.G., Waagb, R., Torstensen, B.E. and Lock, E., 2017. Larvae by feeding seaweed-enriched media modulation of nutrient composition of black soldier fly (*Hermetia illucens*) larvae by feeding seaweed-enriched media. *PLoS ONE* 12(8): e0183188. <https://doi.org/10.1371/journal.pone.0183188>
- Lonergan, S.M., Deeb, N., Fedler, C.A. and Lamont, S.J., 2004. Breast meat quality and composition in unique chicken populations. *Poultry Science* 82(12): 1990-1994. <https://doi.org/10.1093/ps/82.12.1990>
- Makkar, H.P.S., Tran, G., Heuzé, V. and Ankers, P., 2014. State-of-the-art on use of insects as animal feed. *Animal Feed Science and Technology* 197: 1-33. <https://doi.org/10.1016/j.anifeedsci.2014.07.008>
- McGlone, J.J., 2001. Farm animal welfare in the context of other society issues: toward sustainable systems. *Livestock Production Science* 72: 75-81.
- Min, B. and Ahn, D.U., 2014. Mechanism of lipid peroxidation in meat and meat products – a review. *Food Science and Biotechnology* 14(1): 152-163. <https://doi.org/10.31274/rtd-180813-13142>
- Mmereole, F.U.C., 2008. Effects of replacing ground nut cake with rubber seed meal on the haematological and serological indices of broilers. *International Journal of Poultry Science* 7(6): 622-624. <https://doi.org/10.3923/ijps.2008.622.624>
- Mutisya, M.M., Agbodzavu, M.K., Kinyuru, J.N., Tanga, C.M., Gicheha, M., Hailu, G., Salifu, D., Khan, Z. and Niassy, S., 2021. Can black soldier fly *Desmodium intortum* larvae-based diets enhance the performance of Cobb500 broiler chickens and smallholder farmers' profit in Kenya? *Poultry Science* 100(2): 420-430. <https://doi.org/10.1016/j.psj.2020.11.021>
- National Research Council (NRC), 1994. Nutrient requirement of poultry. 9<sup>th</sup> revised ed. National Academic Press. Washington, DC, USA.
- Omondi, D.J., 2017. The influence of strategies in sustaining agribusiness: a case of poultry farmers in Kasarani, Nairobi. United States International University – Africa. Available at: <http://erepo.usiu.ac.ke/11732/3413>
- Ondulla, T.T., Livingston, M.L., Wall, B., Sanders, E.T., VuThien, C., Malheiros, R.D., Livingston, K.A., Carvalho, L.V. and Ferket, P.R., 2019. Meat quality and sensory attributes of meat produced from broiler chickens fed a high oleic peanut diet. *Poultry Science* 98(10): 5188-5197. <https://doi.org/10.3382/ps/pez258>
- Ponte, P.I.P., Mendes, I., Quaresma, M., Aguiar, M.N.M., Lemos, J.P.C., Ferreira, L.M.A., Soares, M.A.C., Alfaia, C.M., Prates, J.A.M. and Fontes, C.M.G.A., 2005. Cholesterol levels and sensory characteristics of meat from broilers consuming moderate to high levels of alfalfa. *Poultry Science* 83(5): 810-814. <https://doi.org/10.1093/ps/83.5.810>
- Popova, T., Petkov, E. and Ignatova, M., 2020. Effect of black soldier fly (*Hermetia illucens*) meals on the meat quality in broilers. *Agricultural and Food Science* 29: 177-188. <https://doi.org/10.23986/afsci.88098>
- Purwin, C., Fijałkowska, M., Pysera, B., Lipiński, K., Sienkiewicz, S., Piwczynski, D. and Puzio, N., 2014. Nitrogen fractions and amino acid content in alfalfa and red clover immediately after cutting and after wilting in the field. *Journal of Elementology* 3: 723-734. <https://doi.org/10.5601/jelem.2014.19.2.692>
- Qiao, M., Fletcher, D.L., Smith, D.P. and Northcutt, J.K., 2001. The effect of broiler breast meat color on pH, moisture, water-holding capacity, and emulsification capacity. *Poultry Science* 80(5): 676-680. <https://doi.org/10.1093/ps/80.5.676>
- R Core Team, 2020. R: a language and environment for statistical computing. R Foundation for Statistical Computing, Vienna, Austria. Available at: <https://www.R-project.org/>.
- Ravindran, V., 2013. Poultry feed availability and nutrition in developing countries: main ingredients used in poultry feed formulation. *Poultry Development Review* 2(10): 694-695.
- Reicks, A.L., Brooks, J.C., Garmyn, A.J., Thompson, L.D., Lyford, C.L. and Miller, M.F., 2011. Demographics and beef preferences affect consumer motivation for purchasing fresh beef steaks and roasts. *Meat Science* 87: 403-411. <https://doi.org/10.1016/j.meatsci.2010.11.018>
- Rymer, C. and Givens, D.I., 2005. n-3 fatty acid enrichment of edible tissue of poultry: a review. *Lipids* 40(2): 121-130. <https://doi.org/10.1007/s11745-005-1366-4>
- Santos-Silva, J. and Vaz Portugal, A., 2001. The effect of weight on carcass and meat quality of Serra da Estrela and Merino Branco lambs fattened with dehydrated lucerne. *Animal Research* 50: 289-298. <https://doi.org/10.1051/animres:2001132>
- Schaefer, E.J., 2002. Lipoproteins, nutrition and heart disease. *The American Journal of Clinical Nutrition* 75(2): 191-212. <https://doi.org/10.1093/ajcn/75.2.191>
- Schiavone, A., Chiarini, R., Marzoni, M., Castillo, A., Tassone, S. and Romboli, I., 2007. Breast meat traits of Muscovy ducks fed on a microalga (*Cryptocodinium cohnii*) meal supplemented diet. *British Poultry Science* 48(5): 573-579. <https://doi.org/10.1080/00071660701615796>

- Schiavone, A., Cullere, M., De Marco, M., Meneguz, M., Biasato, I., Bergagna, S., Dezzutto, D., Gai, F., Dabbou, S., Gasco, L. and Dalle Zotte, A., 2017. Partial or total replacement of soybean oil by black soldier larvae (*Hermetia illucens* L.) fat in broiler diets: effect on growth performances, feed-choice, blood traits, carcass characteristics and meat quality. *Italian Journal of Animal Science* 16: 93-100. <https://doi.org/10.1080/1828051X.2016.1249968>
- Schiavone, A., Dabbou, S., Petracci, M., Zampiga, M., Sirri, F., Biasato, I., Gai, F. and Gasco, L., 2019. Black soldier fly defatted meal as a dietary protein source for broiler chickens: effects on carcass traits, breast meat quality and safety. *Animal* 13: 2397-2405. <https://doi.org/10.1017/S1751731119000685>
- Schiavone, A., Marzoni, M., Castillo, A.J., Neryand Romboli, I., 2010. Dietary lipid sources and vitamin E affect fatty acid composition or lipid stability of breast meat from Muscovy duck. *Canadian Journal of Animal Science* 90(3): 371-378. <https://doi.org/10.4141/CJAS10010>
- Secci, G., Moniello, G., Gasco, L., Bovera, F. and Parisi, G., 2018. Barbary partridge meat quality as affected by *Hermetia illucens* and *Tenebrio molitor* larva meals in feeds. *Food Research International* 112: 291-298. <https://doi.org/10.1016/j.foodres.2018.06.045>
- Smith, D.P., Lyon, C.E. and Lyon, B.G., 2002. The effect of age, dietary carbohydrate source, and feed withdrawal on broiler breast fillet color. *Poultry Science* 81(10): 1584-1588. <https://doi.org/10.1093/ps/81.10.1584>
- Sow, T.M.A. and Grongnet, J.F., 2010. Sensory characteristics and consumer preference for chicken meat in Guinea. *Poultry Science* 89(10): 2281-2292. <https://doi.org/10.3382/ps.2010-00679>
- Teguia, A. and A. Beynen. 2005. Alternative feedstuffs for broilers in Cameroon. *Journal of Agricultural Extension and Rural Development* 17(3). Available at: <http://www.lrrd.org/lrrd17/3/tegu17034.htm>
- Van der Poel, A.F.B., Van Krimpen, M.M., Veldkamp, T. and Kwakkel, R.P., 2013. Unconventional protein sources for poultry feeding – opportunities and threats. *Proceedings of the 19<sup>th</sup> Symposium on Poultry Nutrition*. 26-29 August 2013. Potsdam, Germany, pp. 14-24.
- Wideman, N., O'Bryan, C. and Crandall, P., 2016. Factors affecting poultry meat colour and consumer preferences – a review. *World's Poultry Science Journal* 72(2): 353-366. <https://doi.org/10.1017/S0043933916000015>
- Zeiger, K., Popp, J., Becker, A., Hankel, J., Visscher, C., Klein, G. and Meemken, D., 2017. Lauric acid as feed additive – an approach to reducing *Campylobacter* spp. in broiler meat. *PLoS ONE* 12(4): e0175693. <https://doi.org/10.1371/journal.pone.0175693>
- Zhao, T., Luo, H., Zhang, Y., Liu, K., Jia, H., Chang, Y. and Jiao, L., 2013. Effect of vitamin E supplementation on growth performance, carcass characteristics and intramuscular fatty acid composition of *Longissimus dorsi* muscle in 'Tan' sheep. *Chilean Journal of Agricultural Research* 73: 358-365. <https://doi.org/10.4067/S0718-58392013000400005>

