

RESEARCH ARTICLE

Identifying post-marital residence patterns in prehistory: A phylogenetic comparative analysis of dwelling size

Václav Hrnčír^{1,2}*, Pavel Duda³, Gabriel Šaffa³, Petr Květina², Jan Zrzavý³

1 Department of Archaeology, Faculty of Arts, Charles University, Prague, Czechia, **2** Institute of Archaeology of the Czech Academy of Sciences, Prague, Czechia, **3** Department of Zoology, Faculty of Science, University of South Bohemia, České Budějovice, Czechia

✉ These authors contributed equally to this work.

* hrncir.vaclav@gmail.com



Abstract

Post-marital residence patterns are an important aspect of human social organization. However, identifying such patterns in prehistoric societies is challenging since they leave almost no direct traces in archaeological records. Cross-cultural researchers have attempted to identify correlates of post-marital residence through the statistical analysis of ethnographic data. Several studies have demonstrated that, in agricultural societies, large dwellings (over ca. 65 m²) are associated with matrilocality (spouse resides with or near the wife's family), whereas smaller dwellings are associated with patrilocality (spouse resides with or near the husband's family). In the present study, we tested the association between post-marital residence and dwelling size (average house floor area) using phylogenetic comparative methods and a global sample of 86 pre-industrial societies, 22 of which were matrilocal. Our analysis included the presence of agriculture, sedentism, and durability of house construction material as additional explanatory variables. The results confirm a strong association between matrilocality and dwelling size, although very large dwellings (over ca. 200 m²) were found to be associated with all types of post-marital residence. The best model combined dwelling size, post-marital residence pattern, and sedentism, the latter being the single best predictor of house size. The effect of agriculture on dwelling size becomes insignificant once the fixity of settlement is taken into account. Our results indicate that post-marital residence and house size evolve in a correlated fashion, namely that matrilocality is a predictable response to an increase in dwelling size. As such, we suggest that reliable inferences about the social organization of prehistoric societies can be made from archaeological records.

OPEN ACCESS

Citation: Hrnčír V, Duda P, Šaffa G, Květina P, Zrzavý J (2020) Identifying post-marital residence patterns in prehistory: A phylogenetic comparative analysis of dwelling size. PLoS ONE 15(2): e0229363. <https://doi.org/10.1371/journal.pone.0229363>

Editor: Peter F. Biehl, University at Buffalo - The State University of New York, UNITED STATES

Received: October 24, 2019

Accepted: February 4, 2020

Published: February 24, 2020

Peer Review History: PLOS recognizes the benefits of transparency in the peer review process; therefore, we enable the publication of all of the content of peer review and author responses alongside final, published articles. The editorial history of this article is available here: <https://doi.org/10.1371/journal.pone.0229363>

Copyright: © 2020 Hrnčír et al. This is an open access article distributed under the terms of the [Creative Commons Attribution License](https://creativecommons.org/licenses/by/4.0/), which permits unrestricted use, distribution, and reproduction in any medium, provided the original author and source are credited.

Data Availability Statement: All relevant data are within the manuscript and its Supporting Information files.

Introduction

Post-marital residence rules specify where a person resides after marriage and, accordingly, influence social organization of human societies. In modern wage-based economies, most

Funding: V.H., P.D., G.Š. and J.Z. were supported by the Czech Science Foundation (GACR) Grant 18-23889S. P.K. was supported by the Czech Science Foundation (GACR) Grant 19-16304S. G.Š. was supported by GAJU project 048/2019/P. The funders had no role in study design, data collection and analysis, decision to publish, or preparation of the manuscript.

Competing interests: The authors have declared that no competing interests exist.

newlyweds tend to establish a new household separate from their respective families (neolocal residence). However, in traditional societies couples typically live with or near one's parents [1]. About 71% of all societies listed in the *Ethnographic Atlas* [2] are predominantly patrilocal, while 11% are matrilocal. Ambilocality, multilocality, avunculocality, and neolocality are less frequent, together accounting for the remaining 18% of societies [3]. However, the same distribution does not apply to hunter-gatherer societies, which have a more flexible social organization, being most frequently ambi-/multilocal [4]. The decision regarding who will leave home after marriage and who will stay with their own kin affects many important aspects of social organization [1], including descent systems and kinship terminology [5], wealth inheritance rules [6], modes of marriage [3], community size [7], division of labor [8], migration [9], and warfare [10, 11]. Murdock argued that “when any social system undergoes change, such change regularly begins with a modification in the rule of residence” [5, p. 221]. This notion that a change of post-marital residence rule drives change in other aspects of social organization, not *vice versa*, has become known as “Main Sequence Theory”.

Exact definitions of post-marital residence patterns vary considerably [12]. Some scholars use “patrilocality” as a general term for residence with or near the husband's family [e.g. ref. 1, 13], while others [e.g. ref. 14, 15] distinguish between “patrilocality” (residing in the husband's father's household) and “virilocality” (residing with the husband's kin in a more general sense). The same applies to “matrilocality” and “uxorilocality”, referring to residence with or near the wife's kin. “Ambilocality” refers to residence with or near the kin of either spouse, while “multilocality” refers to the situation where couples move between the households of both sets of parents. “Avunculocality” can be considered a special case of virilocality, when a couple lives with the husband's maternal uncle. In this study, we use “patrilocality” for both patri- and virilocality and “matrilocality” for both matri- and uxorilocality, since they cannot be distinguished in prehistoric patterns by the currently available methods.

Scholars have employed various methods of identifying post-marital residence patterns in prehistoric societies from archaeological records. Primarily, they have focused on skeletal morphology, since inferring any kind of social organization from the variability or spatial distribution of material culture can be misleading [16, 17]. Traditionally, bioarchaeologists examined morphological variation in skeletal and dental traits to identify differences between males and females [for an extensive review of this approach see ref. 14]. According to the theory, the sex with the greater within-group morphological variability is assumed to be the more mobile one. For instance, greater female variability corresponds to greater female migration and thus could indicate patrilocality.

With more recent advances in scientific methods, the focus of bioarchaeologists has moved to isotopic and ancient DNA analyses. For example, researchers using strontium isotope analysis of human tooth enamel [18] found significantly more variance in the distribution of $^{87}\text{Sr}/^{86}\text{Sr}$ signatures among females than among males in early Neolithic Central Europe (5500–5000 BC), indicating patrilocality during this historical period [19]. The same residence pattern has also been proposed for the late Neolithic (2700–2400 BC) communities in Eulau [20], Bergrheinfeld and Lauda-Königshofen [21], and Early Bronze Age (2150–1700 BC) Lech River valley [22], all in Germany, where females fall outside the local strontium range, indicating that their place of birth (and childhood) was elsewhere. Similarly, but in the opposite direction, isotopic evidence suggests a possible transition to matrilocality during the second millennium BC in Thailand [23, 24]. Sex-biased mobility differences can also be inferred from ancient DNA sequences (specifically mtDNA and Y-chromosomal haplotypes). Patrilocal societies should have relatively lower Y-chromosomal diversity and larger mtDNA diversity within a population, while the opposite pattern is expected for matrilocal societies. This has been demonstrated in present-day patrilocal and matrilocal groups in northern Thailand [25] and

also applied in archaeology, e.g. for suggesting that Neanderthals in Iberia (ca. 49,000 BP) were patrilocal [26], or that the prehistoric North American Hopewell community (100 BC to AD 400) was matrilocal [27]. However, more recent studies have shown that the association between DNA diversity and post-marital residence pattern is much less straightforward and not universal [28–31]. Other attempts to infer past social organization are based on population genetic analyses. For example, an abrupt reduction in Y-chromosomal diversity (compared to mtDNA) inferred across several Old World populations around 8,000–4,000 BP [32], has been interpreted as evidence of predominant patrilineality and patrilocality during this period [33].

Anthropologists have applied phylogenetic comparative methods, adopted from evolutionary biology [34, 35], to reconstruct the evolution of cultural traits. Using language trees as a proxy for historical relationships between populations, the evolution of post-marital residence rules has been reconstructed in Austronesian [13, 36], Bantu [37], Indo-European [15, 36], and Tupi [38] language families. The results of these studies suggest that early Austronesians were matrilocal and matrilineal, the first Bantu were patrilocal and patrilineal, early Indo-Europeans practiced patrilocality and/or neolocality, and Tupi ancestors were matrilocal. Recently, Moravec et al. [39] modelled transitions in post-marital residence rules in five language families (Austronesian, Bantu, Indo-European, Pama-Nyungan, and Uto-Aztecan) and found that there is no universal pattern of evolution for post-marital residence rules, although patrilocality seems to be the most common state across space and time. Apart from reconstructing the history of various cultural practices, the phylogenetic comparative approach is useful for studying associations between cultural traits, while controlling for phylogeny. For example, Jordan [40] demonstrated that in Austronesian societies, changes in post-marital residence preceded changes in descent systems, whereas Opie et al. [37] found that in Bantu societies, a change in descent system was always followed by a shift away from the ancestral post-marital residence state. Surowiec et al. [41] found, using a worldwide sample of societies, that matrilineal descent emerges first, followed by a shift towards matrilocality, more often than *vice versa*, challenging Murdock's [5] Main Sequence Theory. Walker et al. [42] demonstrated that the prevalent belief in partible paternity is associated with matrilocal residence in Carib, Macro-Je, Pano, and Tupi language families.

Cross-cultural researchers have attempted to identify correlates of post-marital residence patterns through statistical analysis of ethnographic data [43]. The association between average house floor area (AHFA) and post-marital residence (PMR) was first demonstrated by Ember [44]. In his seminal paper, he showed, using two cross-cultural samples, that AHFA in matrilocal societies is usually more than 51–56 m², while the majority of patrilocal societies have smaller houses. (Note that we use “house” and “dwelling” interchangeably in this paper, both terms referring to residential building). Subsequent studies by Divale [45] and Brown [46] confirmed his findings. According to Divale [45], any archaeological site that had an AHFA less than 42.7 m² could be inferred to have had patrilocal residence with 95% confidence. Conversely, an AHFA larger than 79.2 m² indicates a matrilocal residence. Brown [46] did not suggest any cut-off value; nevertheless, his test confirmed the correlation. Mean AHFA values in his sample were 27.4 m² for patrilocal societies and 78.4 m² for matrilocal ones. Two decades later, Porčić [47] tested these findings. He combined all data from the previous studies into a larger sample of 80 societies and added a new variable into the analysis: the mode of subsistence. His results confirmed the association between AHFA and PMR, but the mode of subsistence had a significant effect on the correlation. The AHFA-PMR association was only significant in agricultural societies, improving the prediction rate by almost 25%, but not in foraging or pastoral societies. This finding was positively received by archaeologists, as dwelling size is usually easy to determine, and has been applied to various archaeological contexts, e.g. to historical northern Iroquoian groups (AD 500–1300; [48]), Chaco Canyon region (AD

900–1150; [49–52]), Hohokam culture (AD 0–1450; [53, 54]) and Neolithic Greece (6600/6500–3300 BC; [55]).

In order to explain his findings, Ember [44] argued that matrilineal societies tended to have larger houses because married sisters find it easier to live together than non-sisters and thus these societies tend to form larger households. In Divale's [45] opinion, larger matrilineal households enhance trust and cooperation between unrelated brothers-in-law who did not know each other before marrying into the community. In this respect, large matrilineal households serve a similar function as men's houses, where men from different families eat, work and sleep together. According to Porčić [47], the absence of agriculture generally implies more mobile subsistence strategies such as foraging or pastoralism. People in mobile societies tend to spend less time and energy building houses and thus have smaller dwellings made of lighter materials, regardless of their post-marital residence rules.

However, these studies suffer from several methodological issues. First, they only considered two types of PMR: matrilineal and patrilineal. Neolocality was excluded from Ember's original study because he found that it correlated with the presence of monetary exchange and markets [56]. Ambilocality and multilocality were also not considered because another cross-cultural study [57] found them to be associated with recent depopulation. Avunculocality was omitted simply because it is rare, present in less than five percent of world cultures [44].

Second, previous studies did not control for the non-independence of societies due to common ancestry. As Galton pointed out in the 19th century [see the discussion in ref. 58], societies cannot be treated as statistically independent. Similar cultural traits can reflect convergent adaptations to similar socio-ecological pressures as well as common ancestry. This realization later became known as "Galton's problem". Anthropologists have attempted to minimize Galton's problem by using subsets of distantly related societies that were assumed to be effectively independent, such as the Standard Cross-Cultural Sample [59]. However, failure to take relatedness into account leads to elevated Type I and Type II error rates, even in the datasets designed for the purpose of mitigating Galton's problem [60, 61]. Common ancestry can be accounted for with a use of phylogeny, which captures the expected covariance among societies. It allows not only to test for a correlation between AHFA and PMR while controlling for non-independence, but also to detect independent (convergent) changes in AHFA in response to changes in PMR or other aspects of social organization. Using phylogenetic comparative methods, we can determine whether large houses are a predictable response to matrilineality and whether AHFA can inform us about the social organization of prehistoric societies.

Moreover, except the presence of agriculture in Porčić's study [47], other aspects that could impact AHFA were not considered. Although Porčić also assumed that house construction material and settlement patterns can significantly affect the house size, he did not include these variables into his analyses. Household wealth is another factor which is positively correlated with house size in many societies [for references see 62, S1 File], indicating that large dwelling does not always mean more household members. Apart from residential and symbolic functions, exceptionally large dwellings could also serve other purposes, such as storage, meeting, defensive or ritual. The appearance and size of dwellings could be significantly influenced also by sociopolitical settings and colonialism. Some types of building materials and technologies could have made it possible to build larger houses, while intercultural contact could have led to change of architectural style.

In the present study, we re-examine the association between the AHFA and PMR using a different sample of societies, revised AHFA values, and a finer continuous variable that captures all types of PMR. Our analysis includes additional explanatory variables, specifically the presence of agriculture, fixity of settlement, and house construction material, while controlling

for non-independence using a time-calibrated phylogenetic supertree of human populations based on genetic and linguistic data [63, 64].

Methods

Study variables

The AHFA data for 80 societies were taken from Porčić’s study [47], which were collected from three previous studies [44–46]. We added 22 new populations for which the AHFA was reported by Brown [46] but not included in previous analyses because they were not (strictly) patrilineal or matrilineal (see [S1 File](#)). Where possible, we checked the data against their original sources (see [S1 File](#)). AHFA values were log-transformed to ensure a normal-like distribution of the data.

Data on post-marital residence rules, the presence of agriculture, fixity of settlement, and construction material were obtained from the open-access *Database of Places, Language, Culture, and Environment (D-PLACE; [65])*. All study variables are described in [Table 1](#) (see also [Table A in S1 File](#)). The variable “Marital residence with kin: prevailing pattern [EA012]” was chosen as a proxy for post-marital residence because the same variable in the *Ethnographic Atlas* [2] was used in previous studies and it is more finely-resolved than the similar variable “Transfer of residence at marriage: prevailing pattern [EA011]”. Original categories were reduced to a five-point scale, which captures a tendency towards matrilocality.

Table 1. Description of study variables.

Name	Original source	Original scale	Transformation
AHFA (ord)	Ref. [47] or primary sources in S1 File	Continuous measure between 0 and ∞	Log-transformed to ensure a normal-like distribution of the data
AHFA (bin)	"As above"	"As above"	Dichotomized into small (< 65 m ²) and large (> 65 m ²)
PMR (ord)	<i>D-PLACE</i> –Marital residence with kin: prevailing pattern [EA012]	1 = Avunculocal	Reduced to five-state continuous trait indicating tendency towards matrilocality: 0 = 1, 4, 8, 10 on original scale 1 = 12 2 = 2, 3, 6, 7 3 = 11 4 = 5, 9
		2 = Ambilocal	
		3 = Avuncu-uxorilocal	
		4 = Avuncu-virilocal	
		5 = Matrilocal	
		6 = Neolocal	
		7 = Separate	
		8 = Patrilocal	
		9 = Uxorilocal	
		10 = Virilocal	
		11 = Ambi-uxo	
		12 = Ambi-viri	
PMR (bin)	"As above"	"As above"	Dichotomized into non-matrilocal (1–4, 6–8, 10, 12 on original scale) and matrilocal (5, 9, 11)
Agriculture	<i>D-PLACE</i> –Agriculture: intensity [EA028]	1 = No agriculture	Dichotomized into agriculture not important (1–2 on original scale) and agriculture important (3–6)
		2 = Casual agriculture	
		3 = Extensive or shifting agriculture	
		4 = Horticulture	
		5 = Intensive agriculture	
		6 = Intensive irrigated agriculture	

(Continued)

Table 1. (Continued)

Name	Original source	Original scale	Transformation
Settlement	<i>D-PLACE</i> –Settlement patterns [EA030]	1 = Nomadic bands	Dichotomized into mobile (1–2 on original scale) and sedentary (3–8)
		2 = Seminomadic communities	
		3 = Semisedentary communities	
		4 = Impermanent settlement	
		5 = Dispersed homesteads	
		6 = Hamlets	
		7 = Villages/towns	
		8 = Complex settlements	
Material	<i>D-PLACE</i> –House construction: wall material [EA081] or House construction: roofing materials [EA083] ^a	1 = Stone, stucco or brick	Dichotomized into impermanent material (2,4,5,6,7,8,10 on original scale and 10 from variable EA083) and durable material (1,3,9 and 9 from variable EA083)
		2 = Plaster, clay or similar	
		3 = Wood or bamboo	
		4 = Bark	
		5 = Hides or skins	
		6 = Fabric	
		7 = Mats	
		8 = Grass	
		9 = Adobe, clay or brick	
		10 = Open walls	
		9[EA083] = Earth or turf	
		10[EA083] = Ice or snow	

^aPopulations with a character state 11 = "walls indistinguishable from roof or merging into the latter" in variable [EA081] were scored based on variable [EA083].

<https://doi.org/10.1371/journal.pone.0229363.t001>

Three additional explanatory variables were dichotomized: agriculture into “agriculture not important” and “agriculture important” according to Porčić [47]; settlement into “mobile” and “sedentary” indicating fixity of settlement; and material into “impermanent” and “durable” indicating durability of wall material of the prevailing type of dwelling.

AHFA and PMR were additionally dichotomized in order to test for correlated evolution (see Phylogenetic comparative analysis). AHFA was coded as “small” and “large”, with a cut-off value of 65 m² as per Porčić [47]; PMR was coded as “non-matrilocal” and “matrilocal”.

Phylogenetic comparative analysis

To apply phylogenetic methods to our global sample of societies, we leveraged a time-calibrated supertree of human populations [63, 64]. This supertree (i.e. a tree of trees) was based on 388 genetic and linguistic phylogenies published between 1990 and 2017, and time-calibrated using 265 node-age constraints derived from genetic, linguistic, archaeological, historical, and epigraphic data. A subset tree of 86 populations (from a total of 102; the others were not included in the phylogeny) for which AHFA values were available was used as a phylogenetic control (Fig 1, Table A in S1 File). We measured phylogenetic signal of individual continuous and binary traits using Pagel’s λ [66] and Fritz and Purvis’s D [67], respectively. The λ values for each multistate trait were estimated using the *phylosig* function in the R package *phytools* [68]. D values for each trait in our sample were estimated using the *phylo.d* function in the R package *caper* [69]. The maximum likelihood (ML) reconstruction of ancestral states was

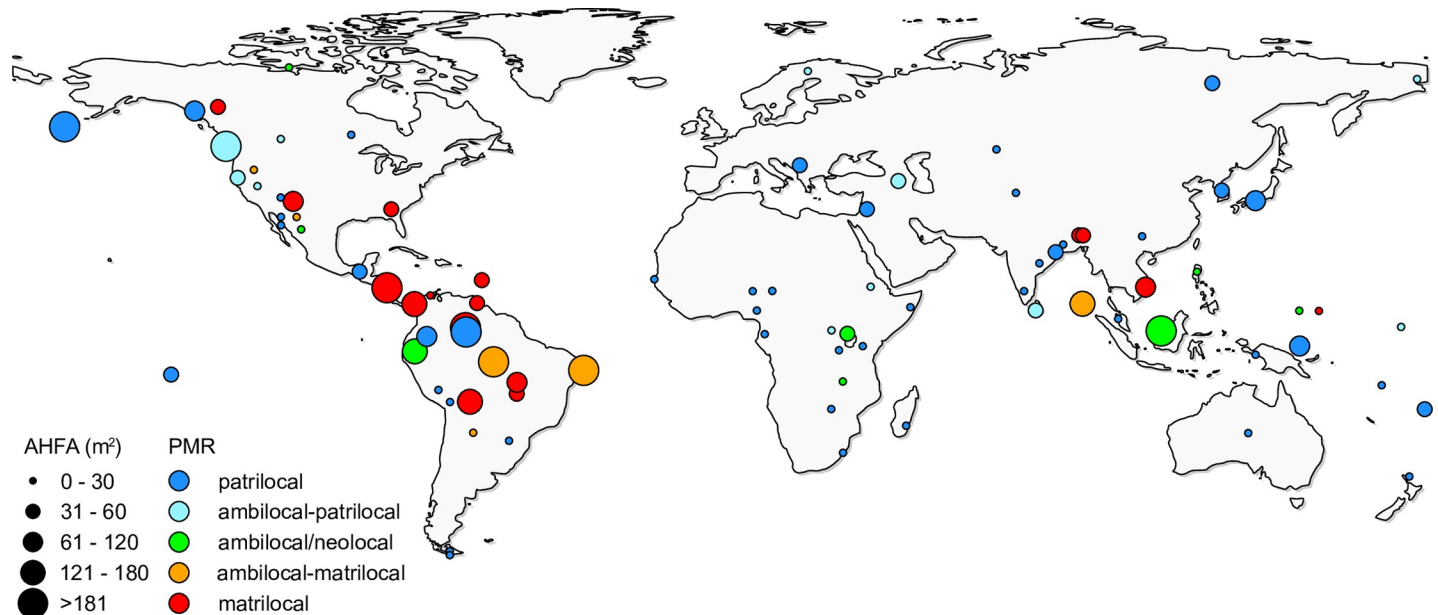


Fig 1. World map showing the distribution of the 86 sample societies. Dot size corresponds to the average house floor area (AHFA); colors indicate the post-marital residence (PMR) pattern.

<https://doi.org/10.1371/journal.pone.0229363.g001>

performed using the *fastAnc* function and the resulting estimates were plotted using the *contMap* function in the R package *phytools* [68].

We modelled a probability that AHFA is a linear function of the explanatory variables, using phylogenetic generalized least squares (PGLS) regression as implemented in the *pgls* function of the R package *caper* [69], while simultaneously controlling for phylogenetic signal (as measured by the ML estimate of λ) in the residuals of each model. We assessed the explained variance by the model with an adjusted coefficient of determination (R^2) and based our model selection on the Akaike information criterion (AIC).

We tested for correlated evolution between dichotomized (binary) versions of AHFA and PMR using Pagel's [70] test for correlated evolution as implemented in the *fitPagel* function of the R package *phytools* [68]. Pagel's method assumes a correlation between two binary traits when the dependent, eight-parameter model, in which the probability of change in one trait depends on the state of the other trait, fits the data better than the independent, four-parameter model, in which evolution in each character is independent of the state of the other character. A goodness-of-fit test based on a likelihood ratio was used to compare log likelihoods of the two models.

Results

All independent variables showed a relatively low but non-random phylogenetic signal (Table 2). The dependent variable AHFA displayed an effectively random phylogenetic structure ($\lambda = 0.103$, $p = 0.269$).

The ML reconstruction of ancestral states (Fig 2) indicates that the last common ancestor of sample societies had very small houses (11.7 m²) and was patrilocal (point estimate 0.3 on a scale from 0 to 5). There is a general tendency towards an increase in AHFA. Dwelling size has decreased in only a few lineages (e.g. aboriginal Australians, populations of Patagonia and Tierra del Fuego, and Maori people in New Zealand; Fig 2A). The reconstruction indicates multiple independent increases in AHFA in societies that shifted towards a more flexible

Table 2. Phylogenetic signal of study variables.

Variable	Phylogenetic signal	p-value
AHFA (ord)	$\lambda = 0.103$	0.269
PMR (ord)	$\lambda = 0.139$	0.031*
Agriculture	D = 0.383	< 0.001*
Settlement	D = 0.732	0.037*
Material	D = 0.767	0.037*

Pagel’s λ for continuous variables (λ values are between 0 and 1, where 0 indicates no phylogenetic signal) and Fritz and Purvis’s D for binary variables (D values are also between 0 and 1, but with 1 indicating no phylogenetic signal.); $p \leq 0.05$ indicates that we can reject the “random distribution” hypothesis.

<https://doi.org/10.1371/journal.pone.0229363.t002>

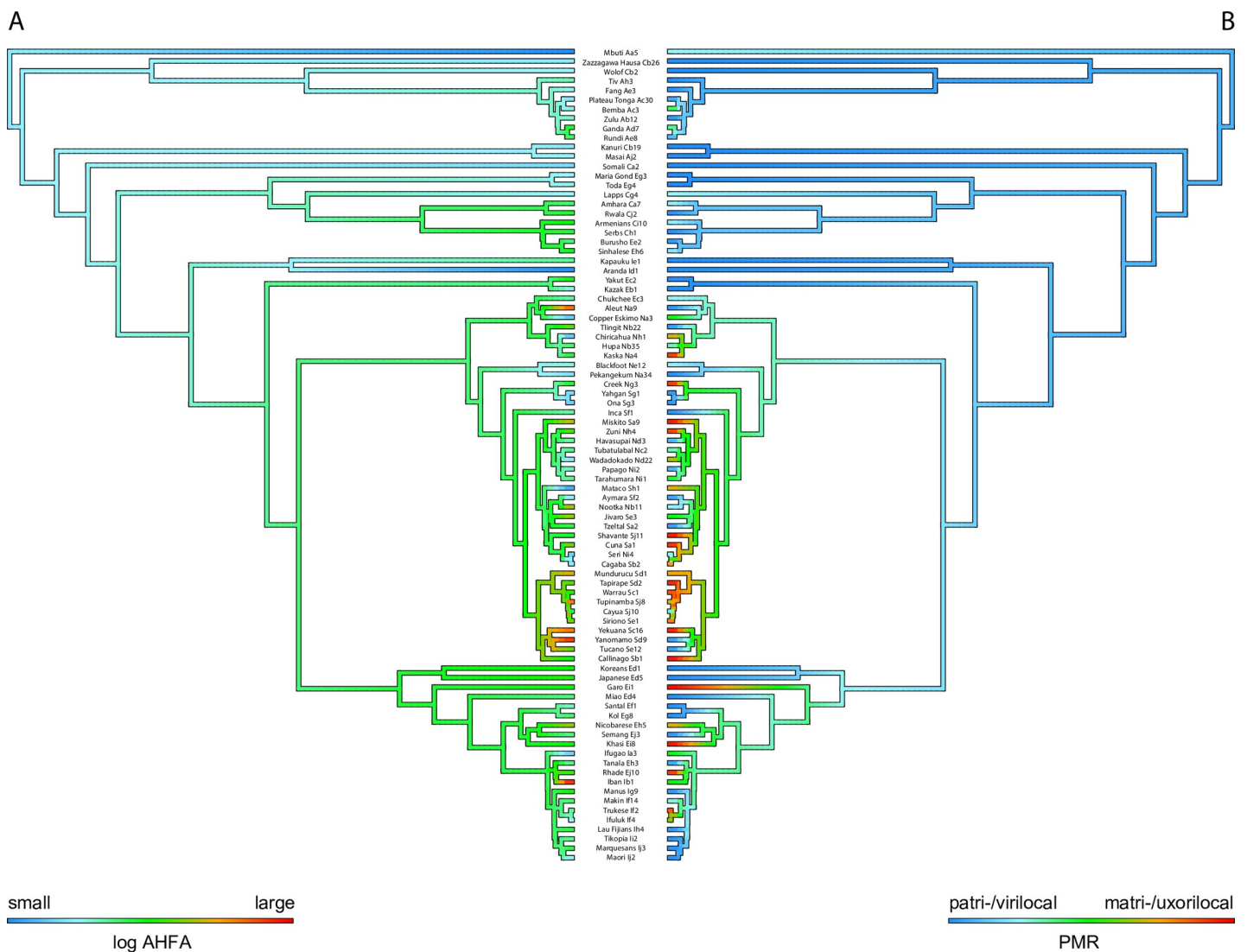


Fig 2. The evolution of (A) AHFA and (B) PMR across the phylogeny. Colors of internal branches correspond to the inferred ancestral state based on maximum likelihood reconstruction of ancestral states in the R package *phytools*.

<https://doi.org/10.1371/journal.pone.0229363.g002>

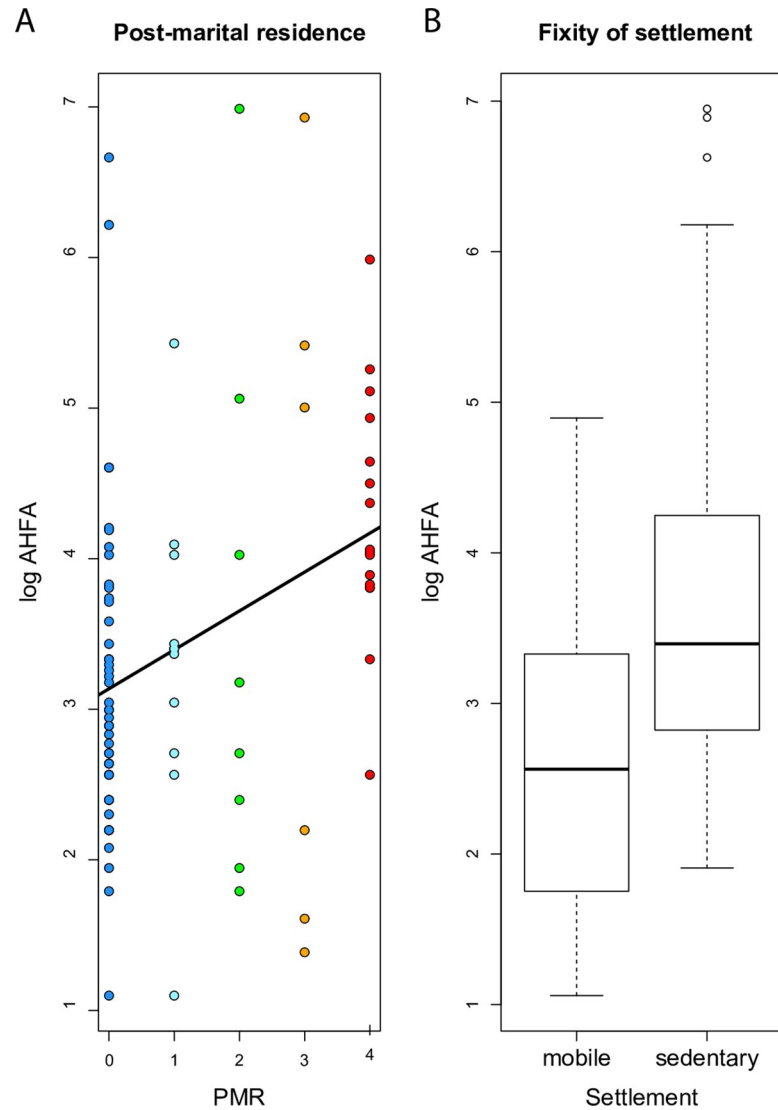


Fig 3. The association between (A) AHFA and PMR and (B) AHFA and settlement. The color coding for PMR states corresponds to Fig 1.

<https://doi.org/10.1371/journal.pone.0229363.g003>

(ambi-/neolocal) post-marital residence pattern and towards matrilocality in North and South America and in East Asia (Fig 2B).

AHFA and PMR are significantly positively associated according to the PGLS analysis (Fig 3A, Table 3). The same result is obtained when a binary version of PMR is used, which is more comparable to the previous study by Porčić [47]; however, both p and adjusted R^2 values are lower. The five-state continuous trait explains about 10% of the total variance in AHFA. AHFA also shows a positive association with agriculture, but only when the binary version of the trait is used (Table 3). The association between AHFA and agriculture loses significance once fixity of settlement is taken into account. The settlement is the single best predictor of AHFA (Fig 3B, Table 3), explaining about 16% of the total variance. The single best model (with highest R^2 and lowest AIC) is the one that combines AHFA and PMR with settlement (Table 3). Construction material is not significantly associated with AHFA.

Table 3. Model comparison for AHFA. Models include different explanatory variables, differently coded variables, different combination of variables, and phylogenetic control.

Model	p-value (F-statistic)	Adjusted R ²	AIC
AHFA~PMR (ord)	0.002*	0.097	275.8615
AHFA~PMR (bin)	0.004*	0.086	276.9319
AHFA~Agriculture (bin)	0.003*	0.085	275.8165
AHFA~Agriculture (ord)	0.328	0.000	283.4568
AHFA~Settlement	< 0.001*	0.163	268.1564
AHFA~Material	0.091	0.022	281.5124
AHFA~PMR (ord) + Settlement	< 0.001*	0.235	261.7224
AHFA~PMR (ord) + Settlement + Agriculture (bin)	< 0.001*	0.235	263.4807
AHFA~PMR (ord) + Settlement + Material	< 0.001*	0.239	263.0849
AHFA~PMR (ord) + Agriculture (bin) + Settlement + Material	< 0.001*	0.231	264.8841

<https://doi.org/10.1371/journal.pone.0229363.t003>

The test for correlated evolution indicates that AHFA and PMR are indeed correlated on phylogeny ($p < 0.001$). The model with PMR as a dependent variable provides the best fit to the data (Fig 4, S1 Table), indicating that the change in house size precedes the change in residence. The combination of small house and patrilocal residence is both the ancestral state and evolutionarily the most stable state. The combination of large houses and patrilocal residence as well as small houses with matrilocality are evolutionarily unstable, resulting in a change of house size or a change of post-marital residence rule. It is rare for a matrilocality society with large houses to transition directly to patrilocality; decreases of house size are more common in matrilocality societies and these are generally followed by the transition to patrilocal residence (Fig 4).

Discussion

Cross-cultural association between matrilocality and house size

Post-marital residence is not an isolated aspect of human social organization but is closely tied to other social structures. Societies with larger houses tend to be matrilocality (although very

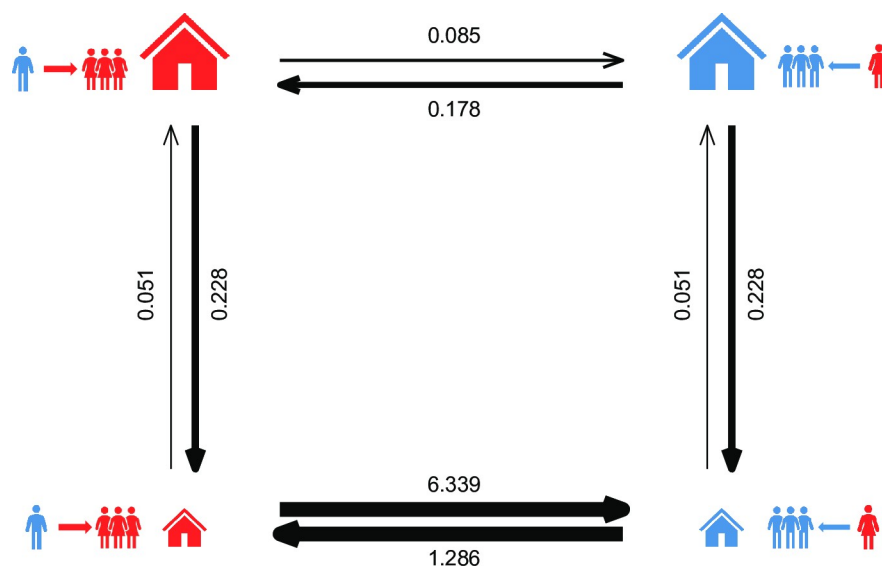


Fig 4. Transition rate matrix for the correlated evolution between AHFA (dependent variable) and PMR. Widths of arrows are proportional to rates of change.

<https://doi.org/10.1371/journal.pone.0229363.g004>

large dwellings can be associated with any type of residence pattern). The association remains significant even when the historical relatedness of sampled societies is controlled for and multiple explanatory variables are included in the model.

In contrast to previous studies [44–47], we applied phylogenetic comparative methods. The previous sample compiled by Porčić [47] was geographically imbalanced, consisting mainly of closely related American societies that shared a common ancestor no more than 16,000 years ago [71]. Our results confirm that these societies are indeed not statistically independent. In our study, all variables except AHFA showed a non-random (although relatively low) phylogenetic signal.

In our sample, although AHFA had a globally random phylogenetic structure, a detailed view at the local level showed that closely related populations often built similar dwellings. For example, there were several regional architectural traditions of large houses in North America. Longhouses were typical for Iroquoian cultural groups [72], circular earth-covered lodges were known from tribes of the Plains [73], and hardwood plankhouses could be found among hunter-gatherers on the Northwest Coast [74]. Three studied South American Tupi-Guaraní populations, namely Mundurucu [75], Tapirape [76], and Tupinamba [77], also lived in similar dwellings: large rectangular houses with walls made of bark or palm leaves, arranged around a central village plaza.

The single best predictor of AHFA is the fixity of settlement (Table 3, Fig 3B); mobile populations prefer to live in small, easy to build houses. Agriculture, when coded as a binary trait (“not important” or “important”), was found to have a positive association with AHFA, as has been previously documented [47], but this association loses significance once the fixity of settlement is included into the model. Although it is true that “the presence or absence of agriculture should be less difficult to infer archaeologically than mobility patterns” [47, p. 408], both traits are not in perfect correlation. While the majority of pastoralists and hunter-gatherers are indeed quite mobile, foragers subsisting predominantly on fishing are more sedentary [78], such as those of the northwest coast of North America living partially or fully sedentarily in large houses [79].

Construction material was not found to be significantly associated with AHFA. This can be partially explained by a less than ideal choice of variable to represent durability of house construction material in our study. For example, in houses with framed constructions, framing material is a much better indicator than wall material (e.g. long houses of Tupinamba, which were occupied for several years, were made of palm thatch on a wooden frame [77]). Unfortunately, framing material is not coded in *Ethnographic Atlas* [2] or *D-PLACE* [65]. Nevertheless, the architectural tradition of large houses might be influenced by the availability and quality of building materials. For example, “ironwood” was essential for longhouses of Borneo [80], cedar wood for Pacific Northwest plank houses [74], and the long leaves of the motacú palm for the simple but quite large dwellings of the Siriono people [81].

Previous studies [44–47] documented the correlation between dwelling size and post-marital residence; our results are in support of their findings (Fig 3A). Large houses usually indicate large households and these might be preferentially occupied by married sisters rather than non-sisters [44]. This argument is based on the finding that in polygynous societies, sororal co-wives usually live together in the same house, while nonsororal co-wives tend to live in separate houses, or at least in separate apartments of the large dwelling [5, pp. 30–31]. Instability of households where brothers and their spouses co-reside (so-called patrilocal joint families) was also documented, for example, in India [82, p. 106] or pre-revolutionary China [83, pp. 402–403]. In both cases, co-resident nuclear families usually broke up after the death of the father; the division was often accelerated by quarrels between wives. On the other hand, even sisters are not immune to verbal and physical aggression towards each other. Cross-

cultural survey found that sisters are often aggressive towards each other in eight percent of societies, and probably in additional eight percent of societies when they are co-wives, while aggression between sisters-in-law is not substantially higher, in 14 percent of societies [84].

Another, not necessary competing, explanation is that large households improve the integration of unrelated brothers-in-law into a matrilineal community [45]. It might also be true that traditional residence typologies do not reflect the true complexities of ethnographic variation (see below). In some of the so-called matrilineal societies, men and women spend more time with their kin at different community levels; for example, while men spend more time with kin at the village level, possibly to facilitate male alliances, women spend more time with kin at the extended household level, possibly to facilitate allomaternal care [85].

Notably, societies with very large AHFA (over ca. 200 m²) were not associated with any particular type of residence. There are seven such societies in our sample. Three of them are patrilineal or predominantly patrilineal (Aleut, Nootka, Yanomamo), three are matrilineal or predominantly matrilineal (Makitare, Mundurucu, Tupinamba), and one is ambilineal (Iban). All of these were sedentary populations, but with different subsistence economies. The majority of them practiced extensive or shifting agriculture, although Aleut and Nootka were hunter-fisher-gatherers. None of them kept cattle, and only the Iban kept pigs (but note the cattle-keeping Miskito with the eighth largest AHFA in the sample, just below the 200 m² boundary). Except for Iban and Aleut, all societies with very large dwellings are from North or South America. Out of the 16 societies with known AHFA that were not included in the phylogeny (see Table A in [S1 File](#)), an additional four societies, all from North America, lived in dwellings with an AHFA of over 200 m²; three are matrilineal (Huron, Iroquois, Pawnee) and one is ambi-patrilineal (Bellacoola).

These examples show that the relationship between house size and post-marital residence is not straightforward and some other factors might influence household composition than those suggested above. In societies with very large houses, one household usually consisted of multiple families (e.g. up to 30 in Tupinamba [77], up to 40 in Aleut [86], or up to 50 in Iban [87]), and it can be assumed that such large units were more resistant to dissolution due to disputes between individuals, than smaller households consisting of only two or three families. In a larger household, there were more mediators and authorities who could settle a dispute. Moreover, leaving of one family did not lead to disintegration of the entire household.

The best model combined AHFA, settlement and PMR ([Table 3](#)). Smaller houses are associated with a migratory lifestyle and patrilineal residence, while large houses are typical for matrilineal sedentary societies. However, it is difficult to establish causality. Does the transition to matrilineality lead to larger dwellings, or does the increase in dwelling size lead to changes in the rule of residence? Divale's [45] argumentation, i.e. that the function of large households is to enhance trust and cooperation between unrelated brothers-in-law, suggests the former possibility. Ember [44] argues that large houses are preferentially occupied by women and their kin, indicating the latter. Our global phylogenetic analysis seems to support Ember's argumentation. Pagel's test for correlated evolution, based on binary traits, indicates that the increase of dwelling size is followed by transition to matrilineality, rather than *vice versa* ([Fig 4](#)). However, these results must be interpreted with caution. The dichotomization of continuous traits comes with a loss of information. The dependence of PMR on AHFA could be partially explained by the inability to reconstruct ancestral PMR unambiguously in deeper nodes. That said, the reconstruction of ancestral states based on continuous traits also indicates that the AHFA increased before multiple independent transitions to matrilineality occurred. The reconstruction indicates that the last common ancestor lived in very small houses (ca. 12 m², close to dwelling size in African societies in our sample, such as Bemba, Fang, Masai, or Wolof). AHFA has increased steadily throughout history, regardless of social organization.

There is probably no universal explanation for the change in the dwellings size and/or in post-marital residence rules. It has been proposed that changes in post-marital residence rules can be initiated by migration [9], depopulation [57], or the emergence of commercialization [56]. A non-matrilocal residence is predicted by a very low female contribution to subsistence [8] or by internal (rather than purely external) warfare [10, 11]. Other crucial factors can include the presence of alienable property and paternity uncertainty [88]. Matrilineal and matrilocal social structures are negatively correlated with intensive agriculture [41, 89] and heritable forms of wealth (e.g. land, money, slaves or large domestic animals [5, 41, 89, 90]) in addition to lower levels of paternity confidence [91, 92]. Specifically, in lowland South American societies, matrilocality often co-occurs with belief in partible paternity, i.e. that more than one biological father can contribute to the formation of a fetus [42].

Reconstructing post-marital residence patterns in prehistoric societies: limitations of phylogenetic cross-cultural analyses

Our results suggest that average house floor area can be used as a proxy for post-marital residence pattern in prehistoric societies. However, before we start hypothesizing about post-marital residence in particular society, we must consider the limitations of cross-cultural studies.

This study, as well as previous analyses [44–47], depend on data from ethnographic literature, which primary focus is usually not the size of dwellings or post-marital residence patterns. References to these cultural traits are often anecdotal and not resulting from empirical research. Data in large ethnographic databases (such as *D-PLACE* [65]) ordinarily capture each culture at a particular time (and location), making backward verification difficult. The sizes of dwellings can be re-examined archaeologically in some areas, but regarding post-marital residence, one must rely on the original ethnographic records. As the Goodenough-Fischer controversy on the Trukese marital residence demonstrated, ethnographers' conclusions can be sometimes contradictory, even when researchers compile a house to house censuses [16].

Using AHFA as a predictor variable is practical from an analytical perspective, but it sometimes simplifies the real situation. The range of house floor area can be wide, especially among societies with large houses, e.g. 70–900 m² among Aleut [93], 20–110 m² (exceptionally more than 900 m²) among Garo [94, 95], and 100–500 m² among Tucano [96–98]. It is usually the case that no data are available on differences in household composition between the smallest and largest households in these societies, and it is not clear whether house size can affect post-marital residence within a population. It is also important to consider how much the size of a house reflects the size of a household. For example, a residential building does not necessarily represent a single space, whether in functional or social contexts. It can be divided into several apartments (e.g. in Iban longhouses [87]) or it can include non-residential parts (e.g. stables in German hall houses [99]). Some residential dwellings (e.g. those belonging to community leaders) can serve multiple functions, for example, as a storage area or as a venue for council meetings, feasts, ceremonies and other social gatherings. Furthermore, the house does not need to be inhabited by a nuclear or extended family members only. For example, among the Mundurucu, all post-pubescent men, single and married, relaxed and slept in the men's house, while women and children resided in family dwellings [75].

Household wealth differences can also have a substantial impact on the dwelling size [62, 100]. Unfortunately, variables describing this factor are missing in ethnographic databases. Although some proxies such as “Social Stratification [SCCS158, SCCS1751]” or “Number of Rich People [SCCS1721]” are available in *D-PLACE*, for using household wealth as control variable in AHFA-PMR analysis, more relevant data based on the deeper review of ethnographic literature are necessary.

The traditional residence typologies [5] are also problematic and have been criticized [16, 85, 101]. Many studies, including ours, focus simply on the most frequent or “ideal” residence type of a population in question and ignore intra-community variation. This is useful in cross-cultural comparisons but can be misleading when reconstructing actual residence patterns of prehistoric societies. First, there are often considerable differences between residence rules and actual practices within a community [16, 102]. Secondly, a couple often changes residence during their marriage, especially after one or more children are born (resulting in temporary matrilineal residence). Taking primary and alternative residence in later years together with residence in the first years of the marriage into account, Marlowe [4] concluded that majority of foragers (74%), as well as non-foragers (61%), were multilocal in the strict sense. Thirdly, residential rules apply differently to different community members. For example, in many matrilineal societies in Amazonia, chiefs and their sons usually resided patrilineally [103], and thus lived with more close kin than non-headmen [101]. Similarly, among Garo living in northeastern India, multiple residence patterns were present, which were all vital to Garo social structure. As Burling [94, pp. 215–216] puts it: “Some men must move in with their wives’ families, while others must set up new households. Some men must move to their wives’ villages, while others must bring their wives to their own villages. [. . .] Since it is not possible to say that any particular residence pattern is ‘preferred,’ it is unreasonable to demand that their custom be summed up by any such simple term as ‘matrilineal.’”

Lastly, with all cross-cultural studies based on ethnographic data, one needs to keep in mind that only a few studied societies were completely unaffected by colonialism or contact with modern civilization at the time of their description [104]. Most societies were exposed to various forms of cultural contact (e.g. epidemic diseases, the presence of missionaries, or trade with Westerners). These might have caused pacification, depopulation, changes in subsistence strategies or changes to social structure, including post-marital residence patterns or house size. It has been previously suggested that emergence of neolocality might have been caused by commercial exchange and industrialization [56], while ambilocality is often a result of depopulation [57]. On the other hand, neither prehistoric nor historical societies lived in complete isolation. Imported artefacts were common in almost every archaeological culture and recent evidence for plague in the Bronze Age in Eurasia [105] indicates that serious depopulations were not uncommon in pre-state societies.

Conclusion

Our analysis confirms the cross-cultural association between house size and post-marital residence. Societies with larger dwellings tend to be matrilineal (compared to societies with smaller dwellings tending towards patrilineality). This association applies to broad range of post-marital residence patterns (not only to strictly matrilineal or patrilineal residence) and remains significant after controlling for other explanatory variables (agriculture, fixity of settlement, and construction material) and phylogeny. The effect of agriculture on dwelling size seems to be a by-product of the effect of fixity of settlement.

Further research is needed to evaluate the effect of other factors on house size, such as differences in household wealth, sociopolitical organization, functional differences in dwelling use, or western influence. Future research could also focus on distinction between residence in the husband’s or the wife’s parents’ dwelling (patrilineal and matrilineal) and residence within the husband’s or the wife’s community (virilineal and uxorilineal). Comparing the dwelling size with other measures of residence, such as Helm’s measure (i.e. the relative number of co-residing primary kin living with men versus women; [106]), could provide additional insight.

Our results suggest that average house floor area can be used as a material proxy for inferring post-marital residence patterns in prehistoric societies. That said, we agree with previous suggestions that “floor area alone should probably never be used as the sole index of residence” [45, p. 114] and that the correlations found “should only be used as working hypotheses to be tested with other lines of data” [47, p. 420]. Such data can be acquired using bioarchaeological methods (e.g. strontium and oxygen isotope or ancient DNA analyses) whose application in archaeological research has grown exponentially in recent years. Still, isotopic evidence must be interpreted with caution. Isotope analyses can distinguish mobility between different geological regions, but not within one community or between communities living in regions with similar isotopic signal [18]. Interpreting isotope results in the terms of post-marital mobility is not always straightforward, since other types of mobility could lead to the same signal [107]. The evidence from cross-cultural and bioarchaeological analyses can complement each other, providing a more elaborated interpretation of the past social reality.

Supporting information

S1 File. List of sample societies and changes to the original variables.
(DOCX)

S1 Table. Model comparison for the evolution of AHFA and PMR based on Pagel’s test for correlated evolution.
(XLSX)

Acknowledgments

We thank two anonymous reviewers for their comments and suggestions on improving the manuscript and to Alexander Barton for proofreading the text.

Author Contributions

Conceptualization: Václav Hrnčíř, Pavel Duda.

Data curation: Václav Hrnčíř, Pavel Duda.

Formal analysis: Pavel Duda, Gabriel Šaffa.

Funding acquisition: Petr Květina, Jan Zrzavý.

Investigation: Václav Hrnčíř, Pavel Duda.

Methodology: Pavel Duda, Gabriel Šaffa, Jan Zrzavý.

Project administration: Pavel Duda, Jan Zrzavý.

Supervision: Petr Květina, Jan Zrzavý.

Validation: Pavel Duda.

Visualization: Václav Hrnčíř, Pavel Duda.

Writing – original draft: Václav Hrnčíř, Pavel Duda.

Writing – review & editing: Václav Hrnčíř, Pavel Duda, Gabriel Šaffa, Petr Květina, Jan Zrzavý.

References

1. Peoples J, Bailey G. *Humanity: An Introduction to Cultural Anthropology*, Ninth Edition. Belmont, Canada: Cengage Learning; 2011.
2. Murdock GP. Ethnographic atlas: a summary. *Ethnology*. 1967; 6:109–236.
3. Divale WT, Harris M. Population, Warfare, and the Male Supremacist Complex. *American Anthropologist*. 1976; 78:521–38.
4. Marlowe FM. Marital Residence among Foragers. *Current Anthropology*. 2004; 45(2):277–84.
5. Murdock GP. *Social Structure*. London: Macmillan Company; 1949.
6. Agarwal B. Who sows? Who reaps? Women and land rights in India. *The Journal of Peasant Studies*. 1988; 15(4):531–81.
7. Korotayev A. Unilocal residence and unilineal descent: a reconsideration. *World Cultures*. 2004; 15:79–110.
8. Korotayev A. Division of Labor by Gender and Postmarital Residence in Cross-Cultural Perspective: A Reconsideration. *Cross-Cultural Research*. 2003; 37(4):335–72.
9. Divale WT. Migration, External Warfare, and Matrilocal Residence. *Behavior Science Research*. 1974; 9(2):75–133.
10. Ember M, Ember CR. The Conditions Favoring Matrilocal versus Patrilocal Residence. *American Anthropologist*. 1971; 73(3):571–94.
11. Ember CR. An Evaluation of Alternative Theories of Matrilocal Versus Patrilocal Residence. *Behavior Science Research*. 1974; 9(2):135–49.
12. Mattison SM, Shenk MK, Thompson ME, Mulder MB, Fortunato L. The evolution of female-biased kinship in humans and other mammals. *Philosophical Transactions of the Royal Society B: Biological Sciences*. 2019; 374(1780):20190007.
13. Jordan FM, Gray RD, Greenhill SJ, Mace R. Matrilocal residence is ancestral in Austronesian societies. *Proceedings of the Royal Society of London B: Biological Sciences*. 2009; 276:1957–64.
14. Stojanowski CM, Schillaci MA. Phenotypic approaches for understanding patterns of intracemetery biological variation. *American Journal of Physical Anthropology*. 2006; 131(S43):49–88.
15. Fortunato L. Reconstructing the History of Residence Strategies in Indo-European—Speaking Societies: Neo-, Uxori-, and Virilocality. *Human Biology*. 2011; 83(1):107–28. <https://doi.org/10.3378/027.083.0107> PMID: 21453007
16. Allen WL, Richardson JB. The Reconstruction of Kinship from Archaeological Data: The Concepts, the Methods, and the Feasibility. *American Antiquity*. 1971; 36(1):41–53.
17. Dumond DE. Science in Archaeology: The Saints Go Marching in. *American Antiquity*. 1977; 42(3):330–49.
18. Bentley RA. Strontium Isotopes from the Earth to the Archaeological Skeleton: A Review. *Journal of Archaeological Method and Theory*. 2006; 13(3):135–87.
19. Bentley RA, Bickle P, Fibiger L, Nowell GM, Dale CW, Hedges REM, et al. Community differentiation and kinship among Europe's first farmers. *Proceedings of the National Academy of Sciences*. 2012; 109(24):9326–30.
20. Haak W, Brandt G, Jong HNd, Meyer C, Ganslmeier R, Heyd V, et al. Ancient DNA, Strontium isotopes, and osteological analyses shed light on social and kinship organization of the Later Stone Age. *Proceedings of the National Academy of Sciences*. 2008; 105(47):18226.
21. Sjögren K-G, Price TD, Kristiansen K. Diet and Mobility in the Corded Ware of Central Europe. *PLoS one*. 2016; 11(5):e0155083. <https://doi.org/10.1371/journal.pone.0155083> PMID: 27223117
22. Mitnik A, Massy K, Knipper C, Wittenborn F, Friedrich R, Pfengle S, et al. Kinship-based social inequality in Bronze Age Europe. *Science*. 2019; 366(6466):731–34. <https://doi.org/10.1126/science.aax6219> PMID: 31601705
23. Bentley RA, Pietrusewsky M, Douglas MT, Atkinson Tim C. Matrilocal residence during the prehistoric transition to agriculture in Thailand? *Antiquity*. 2005; 79(306):865–81.
24. Bentley RA, Tayles N, Higham C, Macpherson C, Atkinson Tim C. Shifting Gender Relations at Khok Phanom Di, Thailand: Isotopic Evidence from the Skeletons. *Current Anthropology*. 2007; 48(2):301–14.
25. Oota H, Settheetham-Ishida W, Tiwawech D, Ishida T, Stoneking M. Human mtDNA and Y-chromosome variation is correlated with matrilocal versus patrilocal residence. *Nature Genetics*. 2001; 29:20–1. <https://doi.org/10.1038/ng711> PMID: 11528385

26. Lalueza-Fox C, Rosas A, Estalrich A, Gigli E, Campos PF, García-Taberner A, et al. Genetic evidence for patrilocal mating behavior among Neandertal groups. *Proceedings of the National Academy of Sciences*. 2011; 108(1):250–3.
27. Bolnick DA, Smith DG. Migration and Social Structure among the Hopewell: Evidence from Ancient DNA. *American Antiquity*. 2007; 72(4):627–44.
28. Vigilant L, Langergraber KE. Inconclusive evidence for patrilocality in Neandertals. *Proceedings of the National Academy of Sciences*. 2011; 108(18):E87.
29. Kumar V, Langstieh BT, Madhavi KV, Naidu VM, Singh HP, Biswas S, et al. Global Patterns in Human Mitochondrial DNA and Y-Chromosome Variation Caused by Spatial Instability of the Local Cultural Processes. *PLOS Genetics*. 2006; 2(4):e53. <https://doi.org/10.1371/journal.pgen.0020053> PMID: 16617372
30. Ly G, Alard B, Laurent R, Lafosse S, Toupance B, Monidarin C, et al. Residence rule flexibility and descent groups dynamics shape uniparental genetic diversities in South East Asia. *American Journal of Physical Anthropology*. 2018; 165(3):480–91. <https://doi.org/10.1002/ajpa.23374> PMID: 29359511
31. Gunnarsdóttir ED, Nandineni MR, Li M, Myles S, Gil D, Pakendorf B, et al. Larger mitochondrial DNA than Y-chromosome differences between matrilocal and patrilocal groups from Sumatra. *Nature Communications*. 2011; 2:228. <https://doi.org/10.1038/ncomms1235> PMID: 21407194
32. Karmin M, Saag L, Vicente M, Sayres MAW, Järve M, Talas UG, et al. A recent bottleneck of Y chromosome diversity coincides with a global change in culture. *Genome Research*. 2015; 25(4):459–66. <https://doi.org/10.1101/gr.186684.114> PMID: 25770088
33. Zeng TC, Aw AJ, Feldman MW. Cultural hitchhiking and competition between patrilineal kin groups explain the post-Neolithic Y-chromosome bottleneck. *Nature Communications*. 2018; 9(1):2077. <https://doi.org/10.1038/s41467-018-04375-6> PMID: 29802241
34. Mace R, Pagel M. *The Comparative Method in Anthropology*. *Current Anthropology*. 1994; 35(5):549–564.
35. Nunn CL. *The Comparative Approach in Evolutionary Anthropology and Biology*. Chicago: University of Chicago Press; 2011.
36. Fortunato L, Jordan F. Your place or mine? A phylogenetic comparative analysis of marital residence in Indo-European and Austronesian societies. *Philosophical Transactions of the Royal Society of London B: Biological Sciences*. 2010; 365:3913–22. <https://doi.org/10.1098/rstb.2010.0017> PMID: 21041215
37. Opie C, Shultz S, Atkinson QD, Currie T, Mace R. Phylogenetic reconstruction of Bantu kinship challenges Main Sequence Theory of human social evolution. *Proceedings of the National Academy of Sciences*. 2014; 111:17414–9.
38. Walker RS, Wichmann S, Mailund T, Atkisson CJ. Cultural phylogenetics of the Tupi language family in lowland South America. *PLOS ONE*. 2012; 7(4): e35025. <https://doi.org/10.1371/journal.pone.0035025> PMID: 22506065
39. Moravec JC, Atkinson Q, Bowern C, Greenhill SJ, Jordan FM, Ross RM, et al. Post-marital residence patterns show lineage-specific evolution. *Evolution and Human Behavior*. 2018; 29(6):594–601.
40. Jordan F. A comparative phylogenetic approach to Austronesian cultural evolution. Ph.D. Thesis, University College London. 2007. Available from: <https://discovery.ucl.ac.uk/id/eprint/1446081/>
41. Surowiec A, Snyder KT, Creanza N. A worldwide view of matriliney: using cross-cultural analyses to shed light on human kinship systems. *Philosophical Transactions of the Royal Society B: Biological Sciences*. 2019; 374(1780):20180077.
42. Walker RS, Flinn MV, Hill KR. Evolutionary history of partible paternity in lowland South America. *Proceedings of the National Academy of Sciences*. 2010; 107(45):19195–200.
43. Ember CR, Ember M. *Cross-Cultural Research Methods*. Lanham: AltaMire Press; 2009.
44. Ember M. An archaeological indicator of matrilocal versus patrilocal residence. *American Antiquity*. 1973; 38(2):177–82.
45. Divale WT. Living floor area and marital residence: A replication. *Behavior Science Research*. 1977; 12(2):109–15.
46. Brown BM. Population estimation from floor area: A restudy of “Naroll’s Constant”. *Behavior Science Research*. 1987; 21:1–49.
47. Porčić M. House Floor Area as a Correlate of Marital Residence Pattern: A Logistic Regression Approach. *Cross-Cultural Research*. 2010; 44(4):405–24.
48. Hart JP. Maize, Matrilocality, Migration, and Northern Iroquoian Evolution. *Journal of Archaeological Method and Theory*. 2001; 8(2):151–82.

49. Peregrine PN. Matrilocality, Corporate Strategy, and the Organization of Production in the Chacoan World. *American Antiquity*. 2001; 66(1):36–46.
50. Schillaci MA, Stojanowski CM. A Reassessment of Matrilocality in Chacoan Culture. *American Antiquity*. 2002; 67(2):343–56.
51. Peregrine PN, Ember M. Response to Schillaci and Stojanowski. *American Antiquity*. 2002; 67(2):357–9.
52. Schillaci MA, Stojanowski CM. Postmarital Residence and Biological Variation at Pueblo Bonito. *American Journal of Physical Anthropology*. 2003; 120(1):1–15. <https://doi.org/10.1002/ajpa.10147> PMID: 12489134
53. Ensor BE. *The Archaeology of Kinship: Advancing Interpretation and Contributions to Theory*. Tucson: The University of Arizona Press; 2013.
54. Ensor BE. Testing Ethnological Theories on Prehistoric Kinship. *Cross-Cultural Research*. 2017; 51(3):1–29.
55. Souvatzi S. Kinship and Social Archaeology. *Cross-Cultural Research*. 2017; 51(2):172–95.
56. Ember M. The Emergence of Neolocal Residence. *New York Academy of Sciences, Transactions*. 1967; 30(2):291–302.
57. Ember CR, Ember M. The Conditions Favoring Multilocal Residence. *Southwestern Journal of Anthropology*. 1972; 28(4):382–400.
58. Tylor EB. On a Method of Investigating the Development of Institutions; Applied to Laws of Marriage and Descent. *Journal of the Anthropological Institute of Great Britain and Ireland*. 1889; 18:245–72.
59. Murdock GP, White DR. Standard Cross-Cultural Sample. *Ethnology*. 1969; 8(4):329–69.
60. Dow MM, Eff EA. Global, regional, and local network autocorrelation in the standard cross-cultural sample. *Cross-Cultural Research*. 2008; 42(2):148–71.
61. Minocher R, Duda P, Jaeggi AV. Explaining marriage patterns in a globally representative sample through socio-ecology and population history: A Bayesian phylogenetic analysis using a new supertree. *Evol Hum Behav*. 2019; 40(2):176–87.
62. Kohler TA, Smith ME, Bogaard A, Feinman GM, Peterson CE, Betzenhauser A, et al. Greater post-Neolithic wealth disparities in Eurasia than in North America and Mesoamerica. *Nature*. 2017; 551(7682):619–22. <https://doi.org/10.1038/nature24646> PMID: 29143817
63. Duda P, Zrzavý J. Human population history revealed by a supertree approach. *Scientific Reports*. 2016; 6:10. <https://doi.org/10.1038/s41598-016-0003-6>
64. Duda P, Zrzavý J. Towards a global phylogeny of human populations based on genetic and linguistic data. In: Sahle Y, Reyes-Centeno H, Bentz C, editors. *Modern Human Origins and Dispersal*. Words, Bones, Genes, Tools: DFG Center for Advanced Studies Series. 1 ed. Tübingen: Kerns Verlag; 2019. p. 331–59.
65. Kirby KR, Gray RD, Greenhill SJ, Jordan FM, Gomes-Ng S, Bibiko H-J, et al. D-PLACE: A Global Database of Cultural, Linguistic and Environmental Diversity. *PloS one*. 2016; 11(7):e0158391. <https://doi.org/10.1371/journal.pone.0158391> PMID: 27391016
66. Pagel M. Inferring the historical patterns of biological evolution. *Nature*. 1999; 401:877–84. <https://doi.org/10.1038/44766> PMID: 10553904
67. Fritz SA, Purvis A. Selectivity in Mammalian Extinction Risk and Threat Types: a New Measure of Phylogenetic Signal Strength in Binary Traits. *Conservation Biology*. 2010; 24(4):1042–51. <https://doi.org/10.1111/j.1523-1739.2010.01455.x> PMID: 20184650
68. Revell LJ. phytools: an R package for phylogenetic comparative biology (and other things). *Methods in Ecology and Evolution*. 2012; 3(2):217–23.
69. Orme D, Freckleton R, Thomas G, Petzoldt T. The caper package: comparative analysis of phylogenetics and evolution in R. R package version 5.2. 2013;1–36.
70. Pagel M. Detecting correlated evolution on phylogenies: a general method for the comparative analysis of discrete characters. *Proceedings of the Royal Society of London Series B: Biological Sciences*. 1994; 255(1342):37–45.
71. Llamas B, Fehren-Schmitz L, Valverde G, Soubrier J, Mallick S, Rohland N, et al. Ancient mitochondrial DNA provides high-resolution time scale of the peopling of the Americas. *Science Advances*. 2016; 2(4):e1501385. <https://doi.org/10.1126/sciadv.1501385> PMID: 27051878
72. Kapches M. The Iroquoian longhouse: architectural and cultural identity. In: Kerber JE, editor. *Archaeology of the Iroquois: Selected readings and research sources*. Syracuse, NY: Syracuse University Press; 2007. p. 174–88.
73. Linton R. The Origin of the Plains Earth Lodge. *American Anthropologist*. 1924; 26(2):247–57.

74. Stewart H. Cedar: Tree of Life to the Northwest Coast Indians. Vancouver: Douglas & McIntyre; 1984.
75. Murphy RF. Headhunter's heritage: social and economic change among the Mundurucú Indians. Berkley: University of California Press; 1960.
76. Wagley C, Galvão E. The Tapirapé. In: Steward JH, editor. Handbook of South American Indians, Vol 3, The Tropical Forest Tribes. Washington D.C.: Smithsonian Institute; 1948. p. 167–78.
77. Métraux A. The Tupinamba. In: Steward JH, editor. Handbook of South American Indians, Vol 3, The Tropical Forest Tribes. Washington D.C.: Smithsonian Institution; 1948. p. 95–133.
78. Marlowe FW. Hunter-gatherers and human evolution. *Evolutionary Anthropology: Issues, News, and Reviews*. 2005; 14(2):54–67.
79. Ames KM. The Northwest Coast: Complex Hunter-Gatherers, Ecology, and Social Evolution. *Annual Review of Anthropology*. 1994; 23:209–29.
80. Metcalf P. The Life of the Longhouse: An Archaeology of Ethnicity. Cambridge: Cambridge University Press; 2010.
81. Holmberg AR. Nomads of the Long Bow: The Siriono of Eastern Bolivia. Washington: U.S. Govt. Print. Off.; 1950.
82. Lamphere L. Strategies, Cooperation, and Conflict Among Women in Domestic Groups. In: Rosaldo MZ, Lamphere L, editors. *Woman, Culture, and Society*. Stanford: Stanford University Press; 1974. p. 97–112.
83. Harrell S. Human Families: Social Change in Global Perspective. Boulder: Westview Press; 1999.
84. Burbank VK. Female Aggression in Cross-Cultural Perspective. *Behavior Science Research*. 1987; 21(1–4):70–100.
85. Walker RS. Human Residence Patterns. In: Scott RA, Kosslyn SM, editors. *Emerging Trends in the Social and Behavioral Sciences*. Hoboken: John Wiley & Sons; 2015. p. 1–8.
86. Veniaminov I. Zapiski ob ostravach UnalaĠkinskago otdġla. St. Petersburg: Tip. Imp. Rossijskoj Akad.; 1840.
87. Freeman D. The family system of the Iban of Borneo. In: Goody J, editor. *The developmental cycle in domestic groups*. Cambridge: Cambridge University Press; 1958. p. 15–52.
88. Holden CJ, Sear R, Mace R. Matriliney as daughter-biased investment. *Evolution and Human Behavior*. 2003; 24(2):99–112.
89. Aberlee DF. Matrilineal descent in cross-cultural perspective. In: Schneider DM, Gough K, editors. *Matrilineal Kinship*. Berkley and Los Angeles: University of California Press; 1961.
90. Holden CJ, Mace R. Spread of cattle led to the loss of matrilineal descent in Africa: a coevolutionary analysis. *Proc Biol Sci*. 2003; 270(1532):2425–33. <https://doi.org/10.1098/rspb.2003.2535> PMID: 14667331
91. Hartung J. Matrilineal inheritance: New theory and analysis. *Behavioral and Brain Sciences*. 1985; 8(4):661–70.
92. Flinn M. Uterine vs. agnatic kinship variability and associated cross-cousin marriage preferences: an evolutionary biological analysis. In: Alexander RD, Tinkle DW, editors. *Natural selection and social behavior*. New York: Chiron Press; 1981. p. 439–75.
93. Lantis M. The Aleut Social System: 1750 to 1810, from Early Historical Sources. In: Lantis M, editor. *Ethnohistory in Southwestern Alaska and the Southern Yukon: Method and Content*. Lexington: University of Kentucky Press; 1970. p. 139–301.
94. Burling R. Rengsangri: Family and kinship in a Garo village. Philadelphia: University of Pennsylvania Press; 1963.
95. Playfair A. The Garos. London: David Nutt; 1909.
96. Fulop M. Aspectos de la Cultura Tukana: Cosmogonía. *Revista Colombiana de Antropología*. 1954; 3:97–137.
97. Silva ABAd. A civilização indigena do Uaupés. Sao Paulo: Centro de Pesquisas de Iauareté; 1962.
98. Goldman I. The Cubeo: Indians of the Northwest Amazon. Urbana, Illinois: University of Illinois Press; 1963.
99. Baumgarten K. Some Notes on the History of the German Hall House. *Vernacular Architecture*. 1976; 7(1):15–20.
100. Kohler TA, Smith ME, editors. *Ten Thousand Years of Inequality: The Archaeology of Wealth Differences*. Tuscon: The University of Arizona Press; 2018.

101. Walker RS, Beckerman S, Flinn MV, Gurven M, von Rueden CR, Kramer KL, et al. Living with Kin in Lowland Horticultural Societies. *Current Anthropology*. 2013; 54(1):96–103.
102. Barnes JA. Marriage and Residential Continuity. *American Anthropologist*. 1960; 62(5):850–66.
103. Castro EBVd. *From the Enemy's Point of View: Humanity and Divinity in an Amazonian Society*. Chicago: The University of Chicago Press; 1992.
104. Ember M, Ember CR. Worldwide Cross-Cultural Studies and Their Relevance for Archaeology. *Journal of Archaeological Research*. 1995; 3(1):87–111.
105. Rasmussen S, Allentoft Morten E, Nielsen K, Orlando L, Sikora M, Sjögren K-G, et al. Early Divergent Strains of *Yersinia pestis* in Eurasia 5,000 Years Ago. *Cell*. 2015; 163(3):571–82. <https://doi.org/10.1016/j.cell.2015.10.009> PMID: 26496604
106. Helm J. Bilaterality in the Socio-Territorial Organization of the Arctic Drainage Dene. *Ethnology*. 1965; 4(4):361–85.
107. Furholt M. Translocal Communities –Exploring Mobility and Migration in Sedentary Societies of the European Neolithic and Early Bronze Age. *Praehistorische Zeitschrift*. 2017; 92(2):304–21.