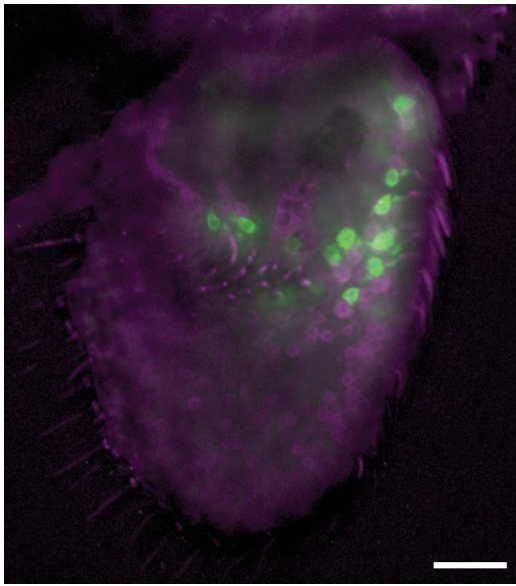
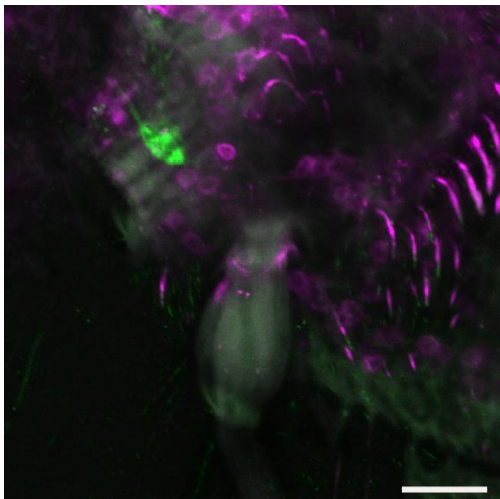


## Supplementary material



**Supplementary figure 1:** Double staining for Gr21a and Orco. Double labelling crosses with Gr21a-Gal4 driving expression of mGFP (green) and anti-Orco antibody (magenta) was used to check the working of anti-Orco antibody.



**Supplementary figure 2:** Double staining for Gr64e and Orco. Double labelling crosses with Gr64e-Gal4 driving expression of mGFP (green) and anti-Orco antibody (magenta) was used to check for co-expression of Gr64e in Orco positive cells.