

Evolution and diversity of TGF- β pathways are linked with novel developmental and behavioural traits

Wen-Sui Lo^{*1}, Marianne Roca^{*2}, Mohannad Dardiry^{*1}, Marisa Mackie³, Gabi Eberhardt¹, Hanh Witte¹, Ray Hong³, Ralf J. Sommer¹ & James W. Lightfoot^{#2}

* These authors contributed equally.

Corresponding author at james.lightfoot@mpinb.mpg.de.

1. Max-Planck Institute for Biology Tübingen, Department for Integrative Evolutionary Biology, Max-Planck Ring 9, 72076 Tübingen, Germany.
2. Max Planck Research Group Genetics of Behavior, Max Planck Institute for Neurobiology of Behavior – caesar, Ludwig-Erhard-Allee 2, 53175, Bonn, Germany.
3. Department of Biology, California State University, Northridge, California, USA.

Abstract

Transforming growth factor β (TGF- β) signalling is essential for numerous biological functions. It is a highly conserved pathway found in all metazoans including the nematode *Caenorhabditis elegans*, which has also been pivotal in identifying many components. Utilising a comparative evolutionary approach, we explored TGF- β signalling in nine nematode species and revealed striking variability in TGF- β gene frequency across the lineage. Of the species analysed, gene duplications in the DAF-7 pathway appear common with the greatest disparity observed in *Pristionchus pacificus*. Specifically, multiple paralogues of *daf-3*, *daf-4* and *daf-7* were detected. To investigate this additional diversity, we induced mutations in 22 TGF- β components and generated corresponding double, triple and quadruple mutants revealing both conservation and diversification in function. Although, the DBL-1 pathway regulating body morphology appears highly conserved, the DAF-7 pathway exhibits functional divergence, notably in some aspects of dauer formation. Furthermore, the formation of the phenotypically plastic mouth in *P. pacificus* is partially influenced through TGF- β with the strongest effect in *Ppa-tag-68*. This appears important for numerous processes in *P. pacificus* but has no known function in *C. elegans*.

Finally, we observe behavioural differences in TGF- β mutants including in chemosensation and the establishment of the *P. pacificus* kin-recognition signal. Thus, TGF- β signalling in nematodes represents a stochastic genetic network capable of generating novel functions through the duplication and deletion of associated genes.

Keywords

TGF- β signalling, *Pristionchus pacificus*, *Caenorhabditis elegans*, developmental systems drift, dauer, signalling pathway evolution, phenotypic plasticity, behaviour, kin-recognition.

Introduction

Signalling pathways mediate fundamental roles ranging from development to behaviour. The Transforming growth factor- β (TGF- β) family is one of the most multifaceted and versatile metazoan signalling pathways and is essential for a wide-range of functions. These include roles in development, immunity, cell fate, aging, homeostasis, tissue repair and metabolism (Massagué 2012; Weiss and Attisano 2013; Batlle and Massagué 2019; Tominaga and Suzuki 2019). Accordingly, various heritable disorders in humans are also attributed to mutations in the TGF- β machinery and additionally, with its involvement in the inhibition of cell-cycle progression and induction of apoptosis, its dysregulation is also implicated in the development of several forms of cancer (Massagué et al. 2000). TGF- β members are a family of secreted peptide growth factors, which act as ligands to recruit and assemble receptor complexes. These signalling complexes in turn activate the Smad transcription factors to regulate gene expression. More specifically, the TGF- β ligands bind to cell surface serine/threonine kinase receptors belonging to two different groups (type I and II). Upon the binding of the TGF- β ligand, a heterotetrameric complex is recruited consisting of both types of receptors with type II receptors phosphorylating and activating type I receptors. The activation of type I receptors in turn act upon another class of proteins called the Smads, phosphorylating the R-Smads (receptor regulated), which recruit Co-Smads (common mediator) to accumulate in the nucleus and regulate transcription (Massagué 2012). An additional class of I-Smads (inhibitory) together with other extracellular regulators also help control Smad activation. Additionally, TGF- β receptors also activate non-Smad signalling pathways which further contributes to the complexity of the signal induced (Zhang 2017). Therefore, there exists the potential for a large diversity of functional regulation through TGF- β signalling as each ligand can act on several receptor types and cell type specific expression of receptors is also observed.

TGF- β signalling is an evolutionarily ancient pathway. While in humans 33 members of the TGF- β family have been identified including seven type I receptors and five type II receptors (Heldin and Moustakas 2016; Morikawa et al. 2016), components have also been found in the most basal of metazoan genomes (Huminiecki et al. 2009; Redmond and McLysaght 2021). This includes the identification of eight TGF- β ligands and five receptors in marine sponges (Srivastava et al. 2010; Riesgo et al. 2014), and in the Placozoan, *Trichoplax adhaerens*, at least four TGF- β receptors and four Smads are present (Srivastava et al. 2008; Huminiecki et al. 2009). Additionally, in model organisms including *Drosophila* and the nematode *Caenorhabditis elegans*, seven and five TGF- β family members have been detected respectively. Moreover, both these invertebrate model organisms pioneered the identification of many genes involved in the TGF- β signalling pathway. This includes the identification of the first serine/threonine kinase type I receptor *daf-1* in *C. elegans*. Mutations in this gene cause worms to erroneously enter the long-lived stress resistant dauer life cycle stage (*daf* - abnormal dauer formation), normally utilised to avoid harsh environmental conditions (Georgi et al. 1990). Additionally, numerous Smad proteins were discovered in these organisms, which derive their name from a combination of the *C. elegans* small body phenotype associated with these mutants (*sma*) (Estevez et al. 1993; Savage et al. 1996), and *Drosophila* mutants identified in a genetic enhancer screen – *mothers against Decapentaplegic* (*Mad*) (Raftery et al. 1995; Sekelsky et al. 1995; Moses et al. 2016).

In *C. elegans*, the five TGF- β signalling ligands are *dbl-1*, *daf-7*, *unc-129*, *tig-2*, and *tig-3* with many of these signalling pathways having well characterised downstream components and functions (Patterson and Padgett 2000). The DBL-1 pathway was first identified through the small body size (*sma*) and abnormal male tail (*mab*) observed in loss of function mutants. DBL-1 is expressed in several neurons including head sensory neurons (Morita et al. 1999; Suzuki et al. 1999; Morita et al. 2002) from where it signals the type I/II receptor pair of SMA-6 and DAF-4. These in turn, act on SMA-2, SMA-3, and SMA-4 to induce transcription and regulate a panoply of phenotypes including body size (Morita et al. 2002; Dineen and Gaudet 2014), male tail development (Savage et al. 1996), immunity (Zhang and Zhang 2009), aging (Luo et al. 2010), lipid accumulation (Clark et al. 2018) and neuronal functions such as neural plasticity in olfactory aversive learning (Vashlishan et al. 2008; Zhang and Zhang 2012). In the DAF-7 signalling pathway, many components were initially identified due to the improper entry or exit from the dauer life cycle stage. DAF-7 is expressed in a small subset of sensory neurons, which can vary depending on environmental conditions (Ren et al. 1996; Meisel et al. 2014). It signals the type I/II receptors DAF-1/DAF-4 with this signal transduced by the Smads of DAF-8 and

DAF-14. In addition to regulating dauer formation, DAF-7 signalling governs an array of processes including fat storage (Greer et al. 2008), behavioural activities associated with feeding (You et al. 2008), male specific behaviours (Hilbert and Kim 2017) and also aging, which occurs through mediation of the insulin signalling pathway (Shaw et al. 2007). UNC-129 represents a more atypical TGF- β signalling ligand with no known type I/II receptors and is thought to regulate the migration of motor neurons (Colavita et al. 1998; MacNeil et al. 2009). A similar function in motor neuron migration has also recently been described for TIG-2 and TIG-3 (Gumienny and Savage-Dunn 2013; Savage-Dunn and Padgett 2017; Baltaci et al. 2022).

Most of our understanding of cell signalling networks in nematodes comes from research on *C. elegans*. However, the phylum Nematoda provides a powerful system to study the evolution of signalling pathways (Gilbert et al. 2016). For example, previous studies utilising *C. elegans* and a comparative nematode system *Pristionchus pacificus*, have highlighted how conserved morphological structures can be generated by diverse signalling networks through a phenomenon known as evolutionary systems drift. Specifically, *C. elegans* vulva formation is regulated through EGF-RAS signalling while in *P. pacificus* a morphologically homologous vulva structure is instead generated through Wnt signalling (Wang and Sommer 2011; Sommer 2012). For TGF- β signalling, comparative studies investigating its evolution across nematodes have often focused on its role in the regulation of dauer formation. This is due to the similarities between the dauer stage in free-living nematodes and the infective larvae of many parasitic nematode species (Viney et al. 2005; Gilbert et al. 2016). As such, several TGF- β family members have been identified in parasitic nematodes although functional studies are problematic due to the complex life cycles found in these organisms (McSorley et al. 2009; Ogawa et al. 2009; Crook et al. 2010; Ma et al. 2019; Yang et al. 2019; He et al. 2020). Interestingly, a recent study in *P. pacificus* demonstrated that the *Ppa-daf-7* pathway is necessary for bacterial induced gut-brain communication, which in turn enhanced numerous developmental phenotypes (Lo et al. 2022). Moreover, multiple *daf-7* type signalling ligands have been identified suggesting a previously unknown element to TGF- β signalling including the possibility of its neofunctionalization outside of the canonical *C. elegans* pathway.

In this study, we reveal that the TGF- β signalling pathway is highly divergent across the nematode phylum. By focusing on comparative studies between *C. elegans* and *P. pacificus*, we reveal this divergence also corresponds to functional differences including in the key signalling ligands *Ppa-tig-2*, *Ppa-unc-129* and *Ppa-daf-7*. Within the *Ppa-daf-7* signalling pathway we find the most striking functional variance including the regulation of *P. pacificus* developmental processes determining dauer formation, mouth structure as well as in behaviours such as

chemosensation and kin-recognition. Thus, TGF- β signalling is an important pathway for the evolution of diverse and novel traits by regulating distinct developmental and behavioural properties across species.

Results

TGF- β signalling pathways are highly divergent across nematode evolution

To investigate the evolution of the TGF- β signalling pathway in nematodes (Figure 1A), we first performed a comparative genomic analysis using 9 representative nematode species. TGF- β components were identified based on their sequence similarity with *C. elegans*. We found that in comparison to the DBL-1 pathway, the copy number of genes involved in the DAF-7 pathway is variable across both parasitic and free-living nematodes (Figure 1B). Additionally, of the species examined, a homolog of *tig-3* was only detected in *C. elegans* and *Haemonchus contortus* while *daf-14* was identified in *C. elegans* alone. Thus, *tig-3* and *daf-14* were likely acquired relatively late in the phylum Nematoda and are restricted to a few species in clade V. Surprisingly, in several species multiple gene copies were detected of the TGF- β signalling ligand *daf-7*, type I receptor *daf-1*, type II receptor *daf-4*, R-Smads *daf-8*, and Co-Smad *daf-3*, suggesting that gene duplications may be a common phenomenon in the nematode DAF-7 pathway.

In *P. pacificus* we detected a particularly extreme example of these duplication events with seven copies of *daf-7* found throughout its genome. Thus, the relative simplicity of *daf-7* ligands in *C. elegans* represents a feature that might have benefited its functional characterisation. Taking advantage of the available genome assembly data across the genus *Pristionchus* (Prabh et al. 2018), we next investigated the evolution of the *daf-7* genes in more detail. The phylogeny of *daf-7* genes from 8 *Pristionchus* species and its basal relative *Parapristionchus gibbindavisi* indicates that this gene family expansion has resulted from multiple duplication events throughout the genus (Figure 1C). *Ppa-daf-7.1* and *Ppa-daf-7.2* are closely related to the *daf-7* gene of other nematodes and additionally, the shorter branch lengths of the *daf-7.1* genes suggest they are likely the ancestral copies. In the further derived *Ppa-daf-7.6* clade, the topologies are generally consistent with the known species relationship. However, species-specific gene duplication events are observed in *P. japonicus*, *P. mayeri*, and *P. entomophagus*. Finally, the *Ppa-daf-7.3*, *Ppa-daf-7.4*, *Ppa-daf-7.5*, and *Ppa-daf-7.7* are derived from recent gene duplication events. Together, these data suggest that the *daf-7* genes in *Pristionchus* are particularly rapidly evolving.

As many developmental phenotypes including defects in body morphology and size are associated with the TGF- β pathway in *C. elegans*, we first analysed our *P. pacificus* mutants for similar deficiencies (Figure 2A and B). In *C. elegans*, body size mutants include *Cel-dbl-1*, *Cel-sma-2* and *Cel-daf-4* are all approximately 70% smaller by volume than wildtype (Flemming et al. 2000; Maduzia et al. 2002; Morita et al. 2002). Similar to the *C. elegans* mutants, both *Ppa-dbl-1* and *Ppa-sma-2* are morphologically smaller in comparison to wildtype worms (20% shorter and 21% shorter respectively). Additionally, the *Ppa-daf-4*; *daf-4.2*; *daf-4.3* triple mutant was also smaller (6.7%) demonstrating functional redundancy between these components. However, differing from *C. elegans*, *Ppa-dbl-1* appears *dumpy* rather than *small* and additionally morphological defects are evident from the larval stage in all these mutants whereas they become apparent in later developmental stages in *C. elegans* (Supplementary fig. S3). This may be due to differences in larval development as *P. pacificus* hatches at the second larval stage compared to *C. elegans* which hatches at the first larval stage. Unexpectedly, we also observed morphological defects in *Ppa-tag-68* which are small (21% shorter) and sickly while

Ppa-tig-2 mutants are 16% shorter. Finally, *Cel-unc-129* is thought to act as a guidance cue for axon migration and is therefore essential for nervous system function. As such, *Cel-unc-129* mutants appear *uncoordinated* (*unc*) and unable to move effectively. However, in *Ppa-unc-129* we observe no *unc* phenotype and no alterations in body morphology indicating divergence in at least some aspects of this gene function between species (Supplementary movie 1).

Dauer formation may be independent of TGF- β signalling

al. 2019; He et al. 2020). Therefore, functional studies in other nematode species will be essential to distinguish between these possibilities, and further inform research on parasitic nematodes.

***Ppa-daf-7* paralogues are required for aspects of chemosensation**

Previous studies in *C. elegans* have found that in addition to its role in dauer formation, *Cel-daf-7* establishes chemosensory receptor gene expression (Nolan et al. 2002) which has subsequently been shown to be involved in establishing an aversive behavioural response to pathogens (Bono et al. 2002; Meisel et al. 2014). Furthermore, the constitutive dauer larvae of *Cel-daf-7* mutants show significantly lower odour attraction than adults (Vertiz et al. 2021). As *P. pacificus* is frequently found associated with scarab beetles, it has a strong response to several pheromones generated from potential insect host species (Cinkornpumin et al. 2014; Carstensen et al. 2021). Therefore, we assessed our *Ppa-daf-7* mutants and its canonically associated downstream receptors for odortaxis defects by investigating the previously identified attractive compound, methyl myristate (MM). Here, the *Ppa-daf-7.1*; *Ppa-daf-7.2* double mutant shows significantly higher attraction to 1% MM compared to wildtype controls indicating environmental sensing defects associated with this pathway (Figure 2E). Surprisingly, this phenotype was absent in the downstream receptors likely indicating the existence of other regulatory pathways outside of the canonical *Ppa-daf-4* and *Ppa-daf-1*. Furthermore, as *Cel-daf-7* is also important for aggregation behaviours in *C. elegans* (Bono et al. 2002; Bendesky et al. 2012), we next investigated additional defects by also assessing aggregation behaviours in *Ppa-daf-7* mutants. Contrary to *C. elegans*, most strains of *P. pacificus* are solitary with aggregation behaviours mostly restricted to a single high altitude adapted clade of *P. pacificus*. Furthermore, this behaviour in *P. pacificus* is independent of *Ppa-npr-1* (Moreno et al. 2016; Moreno et al. 2017). Similarly, all *Ppa-daf-7* mutant permutations also remained solitary when compared to an aggregating strain reinforcing the distinct mechanistic regulation behind these behaviours between *C. elegans* and *P. pacificus* (Supplementary fig. S5). Therefore, *Ppa-daf-7* and its paralogues are important for aspects of environmental sensing in *P. pacificus*. Future work will seek to understand the potential additional complexity generated through the large expansion in *Ppa-daf-7* and identify other potential sensory functions.

TGF- β signalling influences mouth-form fate

While *P. pacificus* and *C. elegans* share many developmental and behavioural traits, there are also several key morphological and behavioural differences between these species.

Most strikingly, are differences in mouth morphology as *P. pacificus* possesses teeth-like denticles, which diversify its diet and behaviours to include predating and feeding upon the larvae of other nematodes (Wilecki et al. 2015; Ishita et al. 2021). Furthermore, the *P. pacificus* mouth structure demonstrates additional complexity as it is phenotypically plastic and dimorphic (Figure 3A). Animals are therefore capable of forming one of two morphs which are either the two toothed predatory morph designated eurystomatous (Eu) or the single toothed microbivorous morph designated stenostomatous (St) (Bento et al. 2010). The ratio of these morphs in a given population is variable and dependent on a multitude of environmental and genetic factors (Ragsdale et al. 2013; Werner et al. 2017; Bui et al. 2018; Sieriebriennikov et al. 2020). We therefore, assessed if the expansion in the TGF- β signalling pathway in *P. pacificus* may regulate the mouth-form ratio (Figure 3B). A significant change in mouth-form frequency was observed in two mutant strains. In *Ppa-daf-7.1*; *Ppa-daf-7.2* double mutants the Eu mouth form ratio decreased from over 97 % in wild type animals to 66 % in the mutant strain. As *Ppa-daf-7.1* and *Ppa-daf-7.2* are expressed in head sensory neurons, (Lo et al. 2022) and have previously also been shown to be defective in their response to MM (Figure 2E), we hypothesize that the altered mouth-form ratio may also be caused by an inability to sense environmental cues. This is similar to the effect observed in several other environmental sensing defective mutants (Moreno et al. 2019). However, the strongest effect on mouth form fate was detected in the *P. pacificus* I-Smad homologue *Ppa-tag-68*, in which the ratio of the Eu morph decreased significantly to 52 % in *Ppa-tag-68* mutants. In addition to the mouth form phenotype observed in *Ppa-tag-68*, other previously mentioned defects are evident in this mutant including slow growth and a sickly appearance. Interestingly, in *C. elegans*, *Cel-tag-68* has no known phenotype despite it being the only I-Smad found in the genomes of both nematode species (Gumienny and Savage-Dunn 2013). Therefore, we investigated the *Ppa-tag-68* mutant further to understand its phenotype and function in *P. pacificus*.

With the pleiotropic defects and overall small body size in the *Ppa-tag-68* mutants we utilised RNA-seq to identify causal pathways behind these phenotypes. From this we detected deficiencies in a multitude of processes including DNA processing and repair, transcription and protein synthesis pathways, as well as cuticle development and many others which may explain the severity and broad spectrum of *Ppa-tag-68* phenotypes observed (Figure 3C, D and Supplementary fig. S6). Furthermore, a transcriptional reporter line revealed extensive expression throughout the *P. pacificus* nervous system including robust expression in many tail neurons, in several head neurons and in cells homologous to the ventral cord neurons VC4 and VC5 in *C. elegans* (Figure 3E). Finally, with the transparent intestinal appearance and the

overall small size in *Ppa-tag-68* mutants, we explored a potential link between *Ppa-tag-68* and lipid storage. We observed the accumulation of lipids in both wild type and *Ppa-tag-68* directly using Oil Red O staining, which stains triglycerides and lipoproteins in nematode species including *P. pacificus* (Figure 3F and G) (O'Rourke et al. 2009; Rae et al. 2012). Indeed, comparisons between wild type animals and *Ppa-tag-68* mutants revealed lower levels of lipid accumulation in the *Ppa-tag-68* intestine. Therefore, *Ppa-tag-68* appears to be essential for many cellular and developmental processes including influencing mouth form fate in *P. pacificus* and future work must clarify this further through additional targeted mutations.

Kin-recognition is disrupted in *Ppa-daf-7.6* mutants

The detection of prey by *P. pacificus* predators likely acts through ciliated sensory neurons in its head (Moreno et al. 2019) and with our findings revealing that TGF- β signalling is essential for aspects of environmental sensing in *P. pacificus*, we next investigated if predatory behaviours were also disrupted in these mutants (Figure 4A). Using previously established predation assays (Wilecki et al. 2015), we first investigated if the detection of prey was abrogated in TGF- β signalling mutants. Only *Ppa-tag-68* mutants showed statistically significant defects (p -value = 0.006, Wilcoxon Mann Whitney test with Bonferroni correction) in detecting *C. elegans* prey (Figure 4B). Mutations in *Ppa-tag-68* also had the strongest effect on mouth formation (Figure 3B). However, due to the pleiotropic and sickly nature of *Ppa-tag-68* mutants, it is difficult to validate if this is caused by a direct defect in prey detection in this mutant or from some of the other defects observed.

In addition to the predation of other nematodes, *P. pacificus* also engages in cannibalistic behaviours of other con-specifics, however, it does not kill its own progeny nor close relatives due to the presence of a kin-recognition system dependent on a small peptide encoded by *self-1* (Lightfoot et al. 2019; Lightfoot et al. 2021). Therefore, we explored if TGF- β signalling was also involved in the establishment of the kin-recognition system in *P. pacificus*. Using TGF- β signalling mutants as predators we probed for any defects in the recognition of the kin-signal on larvae. However, no defects were observed and all mutants avoided killing their kin (Figure 4C). Next, we investigated the TGF- β signalling mutants for failures in the formation of the kin-signal by using the TGF- β signalling mutants as prey (Figure 4D). One TGF- β mutant, *Ppa-daf-7.6*, showed a significant defect in the kin-recognition signal (p -value = 0.003, Wilcoxon Mann Whitney test with Bonferroni correction) and was more likely to be erroneously killed by *P. pacificus* predators. In *Ppa-daf-7.6* mutants, a proportion of animals have an abnormal body morphology which, while not fully penetrant, is particularly evident early in development, (Figure

5A, Supplementary fig. S3). *Ppa-daf-7.6* is expressed in a pair of amphid sensory neurons in the head identified as AM5, which corresponds to the ASE neuron in *C. elegans* (Hong et al. 2019). In addition, we also observed expression in another amphid neuron pair likely to be the AM4(ASK) amphid neuron (Figure 5B). Subsequently, to investigate the kin-recognition defect observed in *Ppa-daf-7.6* further we utilised RNA-Seq. While we observed no change in *self-1* expression levels, a significant reduction in the expression of genes responsible for collagen and cuticle development was detected in this mutant (Figure 5C and Supplementary fig. S6). As an intact cuticle is essential for the kin-recognition signal (Lightfoot et al. 2019), we hypothesise that the kin-recognition defects may result from errors in cuticle formation which in turn may lead to the mis-identification of kin by predators resulting in their killing.

Discussion

Here, we explored TGF- β signalling across nematode evolution with an emphasis on functional studies in *P. pacificus* and revealed numerous conserved and divergent aspects to this pathway (summarised in Supplementary table S3). While we firstly demonstrated a conserved function in regulating body morphology in the *Ppa-dbl-1* associated pathway, other TGF- β ligand pathways regulate diverse functions distinct from those described in *C. elegans*. This includes the *Ppa-unc-129* signalling ligand which shows no *unc* phenotype in *P. pacificus* and is unlikely to share the role in axon guidance described in *C. elegans*. Additionally, the *Ppa-tig-2* pathway appears to have a role in establishing the correct body size in *P. pacificus* while in *C. elegans* it is also associated with neuronal guidance (Baltaci et al. 2022). However, the most striking differences between species were observed in the DAF-7 signalling network. This also coincides with a significant variation in copy number in DAF-7 associated genes. In *P. pacificus*, seven copies of the *Ppa-daf-7* ligand were detected as well as three copies of the type II receptor *Ppa-daf-4* and four copies of the Co-Smad *Ppa-daf-3* resulting in the potential for a degree of functional redundancy. Moreover, our functional analysis of these genes led to one of the most surprising findings as while these genes are canonically associated with the regulation of the dauer life cycle stage in *C. elegans*, this function may be absent in *P. pacificus*. As the dauer stage is often thought homologous to the infective larvae of parasitic nematodes, the role of TGF- β in dauer regulation has been the focus of much parasitic research (Viney et al. 2005). Indeed, in several parasitic nematode species TGF- β expression is higher during the infective larval stage (Gomez-Escobar et al. 2000; Crook et al. 2005; Stoltzfus et al. 2012), however, functional experiments have failed to confirm its significance for infective larval formation. This includes studies investigating *daf-7* in *Parastrongyloides trichosuri* which failed to complement

In addition to differences in the TGF- β signalling ligands, there are also striking phenotypic differences between species in the I-Smad, *tag-68*. In *Cel-tag-68*, no phenotypes have been reported, however, *Ppa-tag-68* is associated with a multitude of defects resulting in sickly, slow growing animals. These are caused by deficiencies in cellular pathways regulating DNA processing, lipid storage, transcription and protein synthesis, as well as errors in developmental processes resulting in a small body size and the altering of the mouth form frequency. In other species, I-Smads are known to regulate both Smad and non-Smad pathways in order to adjust TGF- β signalling levels and are associated with numerous clinical

diseases in humans (Miyazawa and Miyazono 2017). With only a single I-Smad homologue identified in both nematode species, it is therefore somewhat surprising that there is no reported phenotype in *Cel-tag-68* mutants. Our findings in *P. pacificus* may therefore, help elucidated the mechanisms of I-Smad function in nematodes and in other species. Thus, our work demonstrates a previously unknown and surprising flexibility in the TGF- β signalling pathways across nematodes. This coincides with the evolution and regulation of diverse developmental and behavioural traits as distinct as dauer formation in *C. elegans* and mouth form structure in *P. pacificus*, and reinforces the importance of exploring signalling networks outside of canonical model species to reveal fresh insights into their function.

Acknowledgements and Funding Information

We would like to thank Güniz Göze Eren, Fumie Hiramatsu and Leonard Böger (MPI Neurobiology of Behavior - caesar) for discussion and critical reading of the manuscript as well as Rene Pascal for microscope facility assistance. In addition, we thank Kimberly Franco and Heather Carstensen (California State University) for technical assistance. Figure 2E was created with BioRender.com. This work was supported by the Max Planck Society.

Materials and Methods

Nematode Husbandry

All nematodes used were maintained on standard NGM plates and maintained on a diet of *Escherichia coli* OP50. All strains used in this study can be found in Supplementary table S1.

Identification of orthologous of TGF- β genes and construction of gene tree

We collected published genome assemblies of 9 nematode species representing four of the five major nematode clades (Blaxter et al. 1998) *C. elegans* [WormBase website (<https://wormbase.org>), release WS271 2019], *Haemonchus contortus* (Laing et al. 2013), *P. pacificus* (Rödelsperger et al. 2017), *Strongyloides ratti* (Hunt et al. 2016), *Bursaphelenchus xylophilus* (Kikuchi et al. 2011), *Brugia malayi* (Choi et al. 2011; Foster et al. 2020), *Ascaris suum* (Wang et al. 2017), *Romanomermis culicivorax* (Schiffer et al. 2013), and *Trichinella spiralis* (Korhonen et al. 2016). The orthologous of TGF- β genes were identified using OrthoFinder (Emms and Kelly 2015; Emms and Kelly 2019). To interpret the evolutionary history of *daf-7* genes in the genus *Pristionchus*, we identified the orthologous of *daf-7* genes based on

the published *Pristionchus* genomes (Prabh et al. 2018). The *daf-7* genes were aligned by MUSCLE (Edgar 2004) and the gene tree was constructed by PhyML (Guindon et al. 2010)

CRISPR/Cas9 induced mutations

Mutations were induced in candidate genes via CRISPR/Cas9. Gene specific crRNA and universal trans-activating CRISPR RNA (tracrRNA) was purchased from Integrated DNA Technologies and 5 µL of each 100 µM stock mixed and denatured at 95°C for 5 min and allowed to cool down to room temperature to anneal. Cas9 was added to the hybridized product with Cas9 added to the mix (NEB or Integrated DNA Technologies) and incubated at room temperature for 5 mins. This was subsequently diluted with TE buffer to a final concentration of 18.1 µM for the sgRNA and 2.5 µM Cas9. This was injected into the germline of *P. pacificus* strain PS312. Eggs from injected P0s were recovered up to 16 h post injection. After hatching and 2 days' growth these F1 were segregated onto individual plates until they had also developed sufficiently and egg-laying had been initiated. The genotype of the F1 animals were subsequently analyzed via Sanger sequencing and mutations identified before re-isolation in homozygosis. sgRNAs and associated primers utilised in this study can be found in Supplementary table S2. Evidence for the generation of putative null mutants was based upon frame shifts leading to premature stop codons in the protein coding sequences and additionally we utilised NetGene2 which failed to identify any alternative splice sites in these mutants.

Mutant size analysis

Worms were first synchronised by bleaching well populated plates containing an abundance of young adults to acquire egg cultures. These were washed 3 times with M9 to remove bleach, maintained in M9 overnight and allowed to hatch in the solution. Newly hatched larvae were filtered through two 20 µm filters to remove carcasses and transferred to OP50 seeded NGM plates. Worms were imaged at time points 0 h, 24 h, 48 h, 72 h post transfer to the NGM plate. Worms were imaged on a Zeiss Axio Zoom v.16 and worm size was measured using the Wormsizer plugin for Fiji/ImageJ (Moore et al. 2013).

Dauer Assay

P. pacificus wild type PS312 grown in laboratory conditions enter dauer upon crowding and starvation conditions. To determine a possible dauer constitutive phenotype (*daf-c*), we initiated cultures with 10 young adult gravid hermaphrodites. The *Ppa-hsd-2* mutant was used as a *daf-c* positive control and as it forms more dauers at 25°C all mutants were assessed at both 20°C

and 25°C. For the 20°C cultures, we looked for dauer larvae on day 6-10, just prior to starvation. For the 25°C cultures, we looked for dauer larvae on day 4-6, also just prior to starvation. After starvation, we used the same cultures to look for the absence of dauer larvae on days 10-14 as indications of possible dauer formation defects (*daf-d*). We counted the number of dauer larvae and J3 larvae (dauer-equivalent) for up to 100 total nematodes for each culture. We observed at least 3 cultures for each strain at both temperatures.

Chemosensation Assay

Nematodes were cultured at 20°C on OP50 seeded NGM plates until just before food was depleted. After washing twice with M9 buffer, approximately 100 adult hermaphrodites were loaded onto the middle edge of 6 cm plates containing agar as previously described (10 mM MOPS pH 7; 2.5% Tween 20; 1.5% Bacto-agar) (Nuttley et al. 2002; Margie et al. 2013; Carstensen et al. 2021). 1.5 µl of 2 M sodium azide was spotted on opposing sides, followed by adding 1.5 µl of the attractive odor or 99% ethanol control. Each assay involved at least 10 animals in the scoring arena and each condition was the summary of at least three experimental sessions totaling 12-15 assays, with the exception of the *Ppa-hsd-2(csu60)* control for enhanced odor attraction, of which only 9 assays were performed. Chemotaxis assays lasted 15-20 hours with the exception of *Ppa-daf-7.1* and *Ppa-daf-7.2* which were scored after 6-9 hours due to their more rapid dispersal. Methyl myristate was purchased from Sigma-Aldrich (St. Louis, MO) and diluted with 99% ethanol.

Aggregation and Bordering

Larvae were passed through two 20 µm filters to isolated synchronized J2 larvae and put onto OP50 seeded NGM plates. The following day, assay plates were prepared by dropping 50 µl of OP50 into the centre of an NGM plate in order to form one small lawn of bacteria and let at room temperature to ensure bacterial growth. Three days following the filtration, worms were retrieved from plates in 3mL M9 and rinsed with additional M9 to remove excess bacteria from them. After centrifugation, worms were left on unseeded NGM plates for 1 h. Sixty worms were then picked and distributed around the bacterial lawn of assay plates and put at 20°C. After three hours, plates were imaged using a Zeiss Axio Zoom v.16 at 12.5x magnification and the position of worms was assessed using the cell counter plugin for Fiji/ImageJ. Clumping was assessed as the ratio of animals found on the bacterial lawn in contact with another individual. Bordering was assessed as the ratio of animals found at the border of the bacterial lawn.

1 Mouth-form

2 Prior to mouth form phenotyping all mutants were grown for three generations consecutively on
3 NGM plates with OP50 after which the mouth form phenotyping was attained through
4 observation of the nematode buccal cavity using a Zeiss SteREO Discovery V12 microscope.
5 Morph identities were categorised based on previous described species characteristics and
6 could be subsequently verified by mounting and x40 Nomarski examination. Final mouth-form
7 frequencies are the mean of five independent replicates. Statistics were carried out based on
8 previous methods (Lightfoot et al. 2021)

10 Lipid Staining

11 Oil red O was utilised to visualise the nematode internal lipid abundance and distribution
12 according to previous studies (Escorcía et al. 2018). Briefly, an Oil red O stock solution was
13 made by dissolving 500 mg Oil red O powder in 100ml of 100% isopropanol and maintained in
14 the dark. From this, a working solution was made by diluting the stock in water to a final
15 concentration of 60% Oil red O and was passed through a 0.22 µm filter before use. Worms
16 were transferred to a microcentrifuge tube using PBSTriton (0.01%) and subsequently washed
17 three further times in PBSTriton to remove excess bacteria. Supernatant and worms suspended
18 in 100 µl PBSTriton. 600 µl 40% isopropanol was added to the worm pellet and rocked at room
19 temperature for 3 minutes. Worms were then centrifuged at 560 x g for 30 secs and supernatant
20 600 µl of supernatant removed leaving them in 100 µl solution. 600 µl Oil red O working solution
21 was added to each sample and mixed well by rotating for 2 h at room temperature. Samples
22 were centrifuged at 560 x g for 1 min and 600 µl solution removed. A further 600 µl of PBSTriton
23 was then added and the samples mixed by rotating for 30 min to removed excess Oil red O.
24 Samples were then centrifuged at 560 x g for 1 min and all but 50 µl of supernatant removed.
25 Worms were then resuspended in the remaining solution and 5 µl of worm suspension placed
26 onto a microscope slide and a coverslip added on top. Worms were then imaged immediately
27 on a Nikon E1000 microscope and a Bresser MikroCam II 12 MP colour camera. The brightness
28 of the gut was averaged from three areas of 23.68 µm and and normalized by the intensity in
29 the mouth which shows no staining. The inverse of the resulting intensity was plotted.

31 Generating Transgenes

32 Transcriptional reporter lines were generated by PCR amplification of a 1.5 kb region upstream
33 of both target genes, *Ppa-tag-58* and *Ppa-daf-7.6* which was predicted to contain their promoter
34 elements. Subsequently, this was cloned into a pUC19 vector containing the codon optimised

GFP or TurboRFP and Ppa-rpl-23 3'UTR with *P. pacificus* introns (Han et al. 2020). Stable lines were generated by digesting and linearising the plasmids with PstI and 10 ng/ml of this was subsequently co-injected into the *P. pacificus* germline along with 60 ng/ml genomic carrier DNA, cut with PstI, and for *Ppa-daf-7.6*, 10 ng/ml of the co-injection marker *Ppa-egl-20p::RFP* also cut with PstI. The same expression pattern was confirmed in multiple independent lines. Individual animals were imaged using a Zeiss AxioImager Z1 microscope and Axiocam506 mono camera. Primers used to generate transgenic lines can be found in Supplementary table S4.

Predation and Kin-recognition Assays

Corpse assays facilitated rapid quantification of predatory behaviour allowing us to test predation and kin-recognition across the large number of mutants. Prey were maintained on NGM plates seeded with OP50 bacteria until freshly starved, resulting in an abundance of young larvae. These plates were washed with M9 and passed through two 20 µm filters to isolate pure cultures of larvae. They were subsequently centrifuged before being deposited on to an unseeded assay plate by pipetting 1 µl of *C. elegans* larval pellet or 1.5 µl of *P. pacificus* larval pellet on to a 6 cm NGM unseeded plate. Five predatory nematodes were screened for the appropriate mouth morph and added to assay plates for *C. elegans* prey assays. They were then permitted to feed on the prey for 2 h and the plate was subsequently screened for the presence of corpses. When utilising *P. pacificus* as prey for kin-recognition assays, 20 predators were placed on assays and left for 24 h before the plate was subsequently screened for the presence of corpses.

Statistics

Statistical tests were performed using the R software. Box plot represents the distribution of the data using quartiles (Q). Q1, Q2 and Q3 being respectively the values below which lie 25%, 50% and 75% of the data points. Q1 and Q3 form the limits of the box and the median Q2 is indicated by a bolder line. The whiskers represent the range in which most values are found, whereas the values outside represent the outliers. non-significant (ns), p-value ≤ 0.05 (*), p-value ≤ 0.01 (**), p-value ≤ 0.001 (***), p-value ≤ 0.0001 (****)

RNA Sequencing and Data Analysis

Mixed-staged *P. pacificus* animals were collected from 3 NGM plates and were washed three times using M9 buffer. Total RNA was extracted using Direct-Zol RNA Mini prep kit (Zymo

Research) according to the manufacturer's guidelines. The RNA-seq library preparation and sequencing were done by the company Novogene. Raw reads have been uploaded to the Sequence Read Archive (SRA) under the BioProject ID PRJNA828394. Software Hisat2 (version 2.1.0) (Kim et al. 2015) was used to map raw reads to the *P. pacificus* reference genome (pristionchus.org, version: El Paco (Rödelsperger et al. 2017), featureCounts (Liao et al. 2014) was used to quantify the counts of reads mapped to the genomic feature based on the El Paco gene annotations V3. The biological pathways that are differentially expressed were detected using Gene Set Enrichment Analysis (GSEA) (Subramanian et al. 2005). The collection of gene sets was obtained from WormEnrichr (Kuleshov et al. 2016), the genes of *P. pacificus* were assigned into corresponded categories based on their orthology with *C. elegans*.

qRT-PCR

Wild-type, *Ppa-daf-7.6*, and *Ppa-tag-68* animals were first synchronized by bleaching and allowed to hatch in M9 buffer for 24 hours. Animals were collected at mid-J4, late J4, and young adult stages. RNA extraction was performed as described above. qPCR assays were performed using LightCycler 480 Instrument II (Roche Life Science) and iTaq Universal SYBR Green One-Step Kit (Bio-Rad Laboratories). We used *Ppa-gpd-3*, *Ppa-eif-3*, and *Ppa-csq-1* genes as internal controls for relative quantification of gene expression. The relative-fold changes were calculated using the $\Delta\Delta CT$ method. Primers used can be found in Supplementary table S4.

Identification of the oscillating genes

Temporally highly resolved RNA-seq data of *P. pacificus* were obtained from our previous study (Sun et al. 2021). The RNA-seq analysis was performed as described above. The expression patterns of gene sets that were differentially expressed were clustered by hierarchically-clustered heatmap to identify the subset of the oscillating genes.

References

- Baltaci O, Pedersen ME, Sherry T, Handley A, Snieckute G, Cao W, Haas M, Archer S, Pocock R. 2022. Atypical TGF- β signaling controls neuronal guidance in *Caenorhabditis elegans*. *Isience* 25:103791.
- Batlle E, Massagué J. 2019. Transforming Growth Factor- β Signaling in Immunity and Cancer. *Immunity* 50:924–940.
- Bendesky A, Pitts J, Rockman MV, Chen WC, Tan M-W, Kruglyak L, Bargmann CI. 2012. Long-Range Regulatory Polymorphisms Affecting a GABA Receptor Constitute a Quantitative Trait Locus (QTL) for Social Behavior in *Caenorhabditis elegans*. *Plos Genet* 8:e1003157.
- Bento G, Ogawa A, Sommer RJ. 2010. Co-option of the hormone-signalling module dafachronic acid–DAF-12 in nematode evolution. *Nature* 466:494–497.
- Blaxter ML, Ley PD, Garey JR, Liu LX, Scheldeman P, Vierstraete A, Vanfleteren JR, Mackey LY, Dorris M, Frisse LM, et al. 1998. A molecular evolutionary framework for the phylum Nematoda. *Nature* 392:71–75.
- Bono M de, Tobin DM, Davis MW, Avery L, Bargmann CI. 2002. Social feeding in *Caenorhabditis elegans* is induced by neurons that detect aversive stimuli. *Nature* 419:899–903.
- Bui LT, Ivers NA, Ragsdale EJ. 2018. A sulfotransferase dosage-dependently regulates mouthpart polyphenism in the nematode *Pristionchus pacificus*. *Nat Commun* 9:4119.
- Carstensen HR, Villalon RM, Banerjee N, Hallem EA, Hong RL. 2021. Steroid hormone pathways coordinate developmental diapause and olfactory remodeling in *Pristionchus pacificus*. *Genetics* 218.
- Choi Y-J, Ghedin E, Berriman M, McQuillan J, Holroyd N, Mayhew GF, Christensen BM, Michalski ML. 2011. A Deep Sequencing Approach to Comparatively Analyze the Transcriptome of Lifecycle Stages of the Filarial Worm, *Brugia malayi*. *Plos Neglect Trop D* 5:e1409.
- Cinkornpumin JK, Wisidagama DR, Rapoport V, Go JL, Dieterich C, Wang X, Sommer RJ, Hong RL. 2014. A host beetle pheromone regulates development and behavior in the nematode *Pristionchus pacificus*. *Elife* 3:e03229.
- Clark JF, Meade M, Ranepura G, Hall DH, Savage-Dunn C. 2018. *Caenorhabditis elegans* DBL-1/BMP Regulates Lipid Accumulation via Interaction with Insulin Signaling. *G3 Genes Genomes Genetics* 8:343–351.
- Colavita A, Krishna S, Zheng H, Padgett RW, Culotti JG. 1998. Pioneer Axon Guidance by UNC-129, a *C. elegans* TGF- β . *Science* 281:706–709.
- Crook M, Grant K, Grant WN. 2010. Failure of *Parastrongyloides trichosuri* daf-7 to complement a *Caenorhabditis elegans* daf-7 (e1372) mutant: Implications for the evolution of parasitism. *Int J Parasitol* 40:1675–1683.

- 1 Crook M, Thompson FJ, Grant WN, Viney ME. 2005. daf-7 and the development of *Strongyloides ratti*
2 and *Parastrongyloides trichosuri*. *Mol Biochem Parasit* 139:213–223.
- 3 Dineen A, Gaudet J. 2014. TGF- β signaling can act from multiple tissues to regulate *C. elegans* body size.
4 *Bmc Dev Biol* 14:43.
- 5 Edgar RC. 2004. MUSCLE: a multiple sequence alignment method with reduced time and space
6 complexity. *Bmc Bioinformatics* 5:113.
- 7 Emms DM, Kelly S. 2015. OrthoFinder: solving fundamental biases in whole genome comparisons
8 dramatically improves orthogroup inference accuracy. *Genome Biol* 16:157.
- 9 Emms DM, Kelly S. 2019. OrthoFinder: phylogenetic orthology inference for comparative genomics.
10 *Genome Biol* 20:238.
- 11 Escorcía W, Ruter DL, Nhan J, Curran SP. 2018. Quantification of Lipid Abundance and Evaluation of
12 Lipid Distribution in *Caenorhabditis elegans* by Nile Red and Oil Red O Staining. *J Vis Exp Jove*.
- 13 Estevez M, Attisano L, Wrana JL, Albert PS, Massagué J, Riddle DL. 1993. The daf-4 gene encodes a
14 bone morphogenetic protein receptor controlling *C. elegans* dauer larva development. *Nature*
15 365:644–649.
- 16 Flemming AJ, Shen Z-Z, Cunha A, Emmons SW, Leroi AM. 2000. Somatic polyploidization and cellular
17 proliferation drive body size evolution in nematodes. *Proc National Acad Sci* 97:5285–5290.
- 18 Foster JM, Grote A, Mattick J, Tracey A, Tsai Y-C, Chung M, Cotton JA, Clark TA, Geber A, Holroyd
19 N, et al. 2020. Sex chromosome evolution in parasitic nematodes of humans. *Nat Commun* 11:1964.
- 20 Georgi LL, Albert PS, Riddle DL. 1990. daf-1, a *C. elegans* gene controlling dauer larva development,
21 encodes a novel receptor protein kinase. *Cell* 61:635–645.
- 22 Gilabert A, Curran DM, Harvey SC, Wasmuth JD. 2016. Expanding the view on the evolution of the
23 nematode dauer signalling pathways: refinement through gene gain and pathway co-option. *Bmc*
24 *Genomics* 17:476.
- 25 Gomez-Escobar N, Gregory WF, Maizels RM. 2000. Identification of tgh-2, a filarial nematode homolog
26 of *Caenorhabditis elegans* daf-7 and human transforming growth factor beta, expressed in microfilarial
27 and adult stages of *Brugia malayi*. *Infect Immun* 68:6402–6410.
- 28 Goodman MB, Savage-Dunn C. 2022. Reciprocal interactions between transforming growth factor beta
29 signaling and collagens: Insights from *Caenorhabditis elegans*. *Dev Dynam* 251:47–60.
- 30 Greer ER, Pérez CL, Gilst MRV, Lee BH, Ashrafi K. 2008. Neural and Molecular Dissection of a *C.*
31 *elegans* Sensory Circuit that Regulates Fat and Feeding. *Cell Metab* 8:118–131.
- 32 Guindon S, Dufayard J-F, Lefort V, Anisimova M, Hordijk W, Gascuel O. 2010. New Algorithms and
33 Methods to Estimate Maximum-Likelihood Phylogenies: Assessing the Performance of PhyML 3.0.
34 *Systematic Biol* 59:307–321.

- 1 Gumienny TL, Savage-Dunn C. 2013. TGF- β signaling in *C. elegans*. *Wormbook*:1–34.
- 2 Han Z, Lo W-S, Lightfoot JW, Witte H, Sun S, Sommer RJ. 2020. Improving Transgenesis Efficiency
3 and CRISPR-Associated Tools Through Codon Optimization and Native Intron Addition in
4 *Pristionchus Nematodes*. *Genetics* 216:genetics.303785.2020.
- 5 He L, Liu H, Zhang B-Y, Li F-F, Di W-D, Wang C-Q, Zhou C-X, Liu L, Li T-T, Zhang T, et al. 2020. A
6 daf-7-related TGF- β ligand (Hc-tgh-2) shows important regulations on the development of
7 *Haemonchus contortus*. *Parasite Vector* 13:326.
- 8 Heldin C-H, Moustakas A. 2016. Signaling Receptors for TGF- β Family Members. *Csh Perspect Biol*
9 8:a022053.
- 10 Hilbert ZA, Kim DH. 2017. Sexually dimorphic control of gene expression in sensory neurons regulates
11 decision-making behavior in *C. elegans*. *Elife* 6:e21166.
- 12 Hong RL, Riebesell M, Bumbarger DJ, Cook SJ, Carstensen HR, Sarpolaki T, Cochella L, Castrejon J,
13 Moreno E, Sieriebriennikov B, et al. 2019. Evolution of neuronal anatomy and circuitry in two highly
14 divergent nematode species. *Elife* 8:e47155.
- 15 Huminiecki L, Goldovsky L, Freilich S, Moustakas A, Ouzounis C, Heldin C-H. 2009. Emergence,
16 development and diversification of the TGF- β signalling pathway within the animal kingdom. *Bmc*
17 *Evol Biol* 9:28.
- 18 Hunt VL, Tsai IJ, Coghlan A, Reid AJ, Holroyd N, Foth BJ, Tracey A, Cotton JA, Stanley EJ, Beasley H,
19 et al. 2016. The Genomic Basis of Parasitism in the Strongyloides Clade of Nematodes. *Nat Genet*
20 48:299–307.
- 21 Ishita Y, Chihara T, Okumura M. 2021. Different combinations of serotonin receptors regulate predatory
22 and bacterial feeding behaviors in the nematode *Pristionchus pacificus*. *G3 Genes Genomes Genetics*
23 11:jkab011-.
- 24 Kikuchi T, Cotton JA, Dalzell JJ, Hasegawa K, Kanzaki N, McVeigh P, Takanashi T, Tsai IJ, Assefa SA,
25 Cock PJA, et al. 2011. Genomic Insights into the Origin of Parasitism in the Emerging Plant Pathogen
26 *Bursaphelenchus xylophilus*. *Plos Pathog* 7:e1002219.
- 27 Kim D, Langmead B, Salzberg SL. 2015. HISAT: a fast spliced aligner with low memory requirements.
28 *Nat Methods* 12:357–360.
- 29 Korhonen PK, Pozio E, Rosa GL, Chang BCH, Koehler AV, Hoberg EP, Boag PR, Tan P, Jex AR,
30 Hofmann A, et al. 2016. Phylogenomic and biogeographic reconstruction of the *Trichinella* complex.
31 *Nat Commun* 7:10513.
- 32 Kuleshov MV, Jones MR, Rouillard AD, Fernandez NF, Duan Q, Wang Z, Koplev S, Jenkins SL,
33 Jagodnik KM, Lachmann A, et al. 2016. Enrichr: a comprehensive gene set enrichment analysis web
34 server 2016 update. *Nucleic Acids Res* 44:W90–W97.

- 1 Laing R, Kikuchi T, Martinelli A, Tsai IJ, Beech RN, Redman E, Holroyd N, Bartley DJ, Beasley H,
2 Britton C, et al. 2013. The genome and transcriptome of *Haemonchus contortus*, a key model parasite
3 for drug and vaccine discovery. *Genome Biol* 14:R88–R88.
- 4 Liao Y, Smyth GK, Shi W. 2014. featureCounts: an efficient general purpose program for assigning
5 sequence reads to genomic features. *Bioinformatics* 30:923–930.
- 6 Lightfoot JW, Dardiry M, Kalirad A, Giaimo S, Eberhardt G, Witte H, Wilecki M, Rödelberger C,
7 Traulsen A, Sommer RJ. 2021. Sex or cannibalism: Polyphenism and kin recognition control social
8 action strategies in nematodes. *Sci Adv* 7:eabg8042.
- 9 Lightfoot JW, Wilecki M, Rödelberger C, Moreno E, Susoy V, Witte H, Sommer RJ. 2019. Small
10 peptide-mediated self-recognition prevents cannibalism in predatory nematodes. *Science* 364:86–89.
- 11 Lo W-S, Han Z, Witte H, Röseler W, Sommer RJ. 2022. Synergistic interaction of gut microbiota
12 enhances the growth of nematode through neuroendocrine signaling. *Curr Biol*.
- 13 Luo S, Kleemann GA, Ashraf JM, Shaw WM, Murphy CT. 2010. TGF- β and Insulin Signaling Regulate
14 Reproductive Aging via Oocyte and Germline Quality Maintenance. *Cell* 143:299–312.
- 15 Ma G, Wang T, Korhonen PK, Nie S, Reid GE, Stroehlein AJ, Koehler AV, Chang BCH, Hofmann A,
16 Young ND, et al. 2019. Comparative bioinformatic analysis suggests that specific dauer-like
17 signalling pathway components regulate *Toxocara canis* development and migration in the
18 mammalian host. *Parasite Vector* 12:32.
- 19 MacNeil LT, Hardy WR, Pawson T, Wrana JL, Culotti JG. 2009. UNC-129 regulates the balance between
20 UNC-40 dependent and independent UNC-5 signaling pathways. *Nat Neurosci* 12:150–155.
- 21 Maduzia LL, Gumienny TL, Zimmerman CM, Wang H, Shetgiri P, Krishna S, Roberts AF, Padgett RW.
22 2002. *lon-1* regulates *Caenorhabditis elegans* body size downstream of the *dbl-1* TGF beta signaling
23 pathway. *Dev Biol* 246:418–428.
- 24 Margie O, Palmer C, Chin-Sang I. 2013. *C. elegans* Chemotaxis Assay. *J Vis Exp*:e50069.
- 25 Massagué J. 2012. TGF β signalling in context. *Nat Rev Mol Cell Biology* 13:616–630.
- 26 Massagué J, Blain SW, Lo RS. 2000. TGF β Signaling in Growth Control, Cancer, and Heritable
27 Disorders. *Cell* 103:295–309.
- 28 McSorley HJ, Grainger JR, Harcus Y, Murray J, Nisbet AJ, Knox DP, Maizels RM. 2009. *daf-7*-related
29 TGF-beta homologues from *Trichostrongylus* nematodes show contrasting life-cycle expression
30 patterns. *Parasitology* 137:159–171.
- 31 Meisel JD, Panda O, Mahanti P, Schroeder FC, Kim DH. 2014. Chemosensation of Bacterial Secondary
32 Metabolites Modulates Neuroendocrine Signaling and Behavior of *C. elegans*. *Cell* 159:267–280.
- 33 Miyazawa K, Miyazono K. 2017. Regulation of TGF- β Family Signaling by Inhibitory Smads. *Csh*
34 *Perspect Biol* 9:a022095.

- 1 Moore BT, Jordan JM, Baugh LR. 2013. WormSizer: High-throughput Analysis of Nematode Size and
2 Shape. *Plos One* 8:e57142.
- 3 Moreno E, Lightfoot JW, Lenuzzi M, Sommer RJ. 2019. Cilia drive developmental plasticity and are
4 essential for efficient prey detection in predatory nematodes. *Proc Royal Soc B* 286:20191089.
- 5 Moreno E, McGaughan A, Rödelberger C, Zimmer M, Sommer RJ. 2016. Oxygen-induced social
6 behaviours in *Pristionchus pacificus* have a distinct evolutionary history and genetic regulation from
7 *Caenorhabditis elegans*. *Proc Royal Soc B Biological Sci* 283:20152263.
- 8 Moreno E, Sieriebriennikov B, Witte H, Rödelberger C, Lightfoot JW, Sommer RJ. 2017. Regulation of
9 hyperoxia-induced social behaviour in *Pristionchus pacificus* nematodes requires a novel cilia-
10 mediated environmental input. *Sci Rep-uk* 7:17550.
- 11 Morikawa M, Derynck R, Miyazono K. 2016. TGF- β and the TGF- β Family: Context-Dependent Roles in
12 Cell and Tissue Physiology. *Csh Perspect Biol* 8:a021873.
- 13 Morita K, Chow KL, Ueno N. 1999. Regulation of body length and male tail ray pattern formation of
14 *Caenorhabditis elegans* by a member of TGF-beta family. *Development* 126:1337–1347.
- 15 Morita K, Flemming AJ, Sugihara Y, Mochii M, Suzuki Y, Yoshida S, Wood WB, Kohara Y, Leroi AM,
16 Ueno N. 2002. A *Caenorhabditis elegans* TGF- β , DBL-1, controls the expression of LON-1, a PR-
17 related protein, that regulates polyploidization and body length. *Embo J* 21:1063–1073.
- 18 Moses HL, Roberts AB, Derynck R. 2016. The Discovery and Early Days of TGF- β : A Historical
19 Perspective. *Csh Perspect Biol* 8:a021865.
- 20 Nakayama K, Ishita Y, Chihara T, Okumura M. 2020. Screening for CRISPR/Cas9-induced mutations
21 using a co-injection marker in the nematode *Pristionchus pacificus*. *Dev Genes Evol* 230:257–264.
- 22 Nolan KM, Sarafi-Reinach TR, Horne JG, Saffer AM, Sengupta P. 2002. The DAF-7 TGF- β signaling
23 pathway regulates chemosensory receptor gene expression in *C. elegans*. *Gene Dev* 16:3061–3073.
- 24 Nuttley WM, Atkinson-Leadbetter KP, Kooy D van der. 2002. Serotonin mediates food-odor associative
25 learning in the nematode *Caenorhabditis elegans*. *Proc National Acad Sci* 99:12449–12454.
- 26 Ogawa A, Streit A, Antebi A, Sommer RJ. 2009. A Conserved Endocrine Mechanism Controls the
27 Formation of Dauer and Infective Larvae in Nematodes. *Curr Biol* 19:67–71.
- 28 O'Rourke EJ, Soukas AA, Carr CE, Ruvkun G. 2009. *C. elegans* Major Fats Are Stored in Vesicles
29 Distinct from Lysosome-Related Organelles. *Cell Metab* 10:430–435.
- 30 Patterson GI, Padgett RW. 2000. TGF β -related pathways. *Trends Genet* 16:27–33.
- 31 Prabh N, Roeseler W, Witte H, Eberhardt G, Sommer RJ, Rödelberger C. 2018. Deep taxon sampling
32 reveals the evolutionary dynamics of novel gene families in *Pristionchus* nematodes. *Genome Res*
33 28:1664–1674.

- 1 Rae R, Sinha A, Sommer RJ. 2012. Genome-Wide Analysis of Germline Signaling Genes Regulating
2 Longevity and Innate Immunity in the Nematode *Pristionchus pacificus*. *Plos Pathog* 8:e1002864.
- 3 Raftery LA, Twombly V, Wharton K, Gelbart WM. 1995. Genetic screens to identify elements of the
4 decapentaplegic signaling pathway in *Drosophila*. *Genetics* 139:241–254.
- 5 Ragsdale EJ, Müller MR, Rödelberger C, Sommer RJ. 2013. A Developmental Switch Coupled to the
6 Evolution of Plasticity Acts through a Sulfatase. *Cell* 155:922–933.
- 7 Redmond AK, McLysaght A. 2021. Evidence for sponges as sister to all other animals from partitioned
8 phylogenomics with mixture models and recoding. *Nat Commun* 12:1783.
- 9 Ren P, Lim C-S, Johnsen R, Albert PS, Pilgrim D, Riddle DL. 1996. Control of *C. elegans* Larval
10 Development by Neuronal Expression of a TGF- β Homolog. *Science* 274:1389–1391.
- 11 Riesgo A, Farrar N, Windsor PJ, Giribet G, Leys SP. 2014. The Analysis of Eight Transcriptomes from
12 All Poriferan Classes Reveals Surprising Genetic Complexity in Sponges. *Mol Biol Evol* 31:1102–
13 1120.
- 14 Rödelberger C, Meyer JM, Prabh N, Lanz C, Bemm F, Sommer RJ. 2017. Single-Molecule Sequencing
15 Reveals the Chromosome-Scale Genomic Architecture of the Nematode Model Organism *Pristionchus*
16 *pacificus*. *Cell Reports* 21:834–844.
- 17 Savage C, Das P, Finelli AL, Townsend SR, Sun CY, Baird SE, Padgett RW. 1996. *Caenorhabditis*
18 *elegans* genes *sma-2*, *sma-3*, and *sma-4* define a conserved family of transforming growth factor beta
19 pathway components. *Proc National Acad Sci* 93:790–794.
- 20 Savage-Dunn C, Padgett RW. 2017. The TGF- β Family in *Caenorhabditis elegans*. *Csh Perspect Biol*
21 9:a022178.
- 22 Schiffer PH, Kroiher M, Kraus C, Koutsovoulos GD, Kumar S, Camps JIR, Nsah NA, Stappert D, Morris
23 K, Heger P, et al. 2013. The genome of *Romanomermis culicivora*: revealing fundamental changes in
24 the core developmental genetic toolkit in Nematoda. *Bmc Genomics* 14:923.
- 25 Sekelsky JJ, Newfeld SJ, Raftery LA, Chartoff EH, Gelbart WM. 1995. Genetic characterization and
26 cloning of mothers against dpp, a gene required for decapentaplegic function in *Drosophila*
27 *melanogaster*. *Genetics* 139:1347–1358.
- 28 Shaw WM, Luo S, Landis J, Ashraf J, Murphy CT. 2007. The *C. elegans* TGF- β Dauer Pathway
29 Regulates Longevity via Insulin Signaling. *Curr Biol* 17:1635–1645.
- 30 Sieriebriennikov B, Sun S, Lightfoot JW, Witte H, Moreno E, Rödelberger C, Sommer RJ. 2020.
31 Conserved nuclear hormone receptors controlling a novel plastic trait target fast-evolving genes
32 expressed in a single cell. *Plos Genet* 16:e1008687.
- 33 Sommer RJ. 2012. Evolution of regulatory networks: nematode vulva induction as an example of
34 developmental systems drift. *Adv Exp Med Biol* 751:79–91.

- 1 Srivastava M, Begovic E, Chapman J, Putnam NH, Hellsten U, Kawashima T, Kuo A, Mitros T, Salamov
2 A, Carpenter ML, et al. 2008. The Trichoplax genome and the nature of placozoans. *Nature* 454:955–
3 960.
- 4 Srivastava M, Simakov O, Chapman J, Fahey B, Gauthier MEA, Mitros T, Richards GS, Conaco C,
5 Dacre M, Hellsten U, et al. 2010. The Amphimedon queenslandica genome and the evolution of
6 animal complexity. *Nature* 466:720–726.
- 7 Stoltzfus JD, Minot S, Berriman M, Nolan TJ, Lok JB. 2012. RNAseq Analysis of the Parasitic Nematode
8 Strongyloides stercoralis Reveals Divergent Regulation of Canonical Dauer Pathways. *Plos Neglect*
9 *Trop D* 6:e1854.
- 10 Subramanian A, Tamayo P, Mootha VK, Mukherjee S, Ebert BL, Gillette MA, Paulovich A, Pomeroy
11 SL, Golub TR, Lander ES, et al. 2005. Gene set enrichment analysis: a knowledge-based approach for
12 interpreting genome-wide expression profiles. *P Natl Acad Sci Usa* 102:15545–15550.
- 13 Sun S, Rödelberger C, Sommer RJ. 2021. Single worm transcriptomics identifies a developmental core
14 network of oscillating genes with deep conservation across nematodes. *Genome Res* 31:1590–1601.
- 15 Suzuki Y, Yandell MD, Roy PJ, Krishna S, Savage-Dunn C, Ross RM, Padgett RW, Wood WB. 1999. A
16 BMP homolog acts as a dose-dependent regulator of body size and male tail patterning in
17 *Caenorhabditis elegans*. *Development* 126:241–250.
- 18 Tominaga K, Suzuki HI. 2019. TGF- β Signaling in Cellular Senescence and Aging-Related Pathology. *Int*
19 *J Mol Sci* 20:5002.
- 20 Vashlishan AB, Madison JM, Dybbs M, Bai J, Sieburth D, Ch'ng Q, Tavazoie M, Kaplan JM. 2008. An
21 RNAi Screen Identifies Genes that Regulate GABA Synapses. *Neuron* 58:346–361.
- 22 Vertiz J, Carstensen H, Hong R. 2021. Dauer Development Modulates Olfactory Behavior.
23 *Micropublication Biology* 2021;10.17912/micropub.biology.000479.
- 24 Viney ME, Thompson FJ, Crook M. 2005. TGF-beta and the evolution of nematode parasitism. *Int J*
25 *Parasitol* 35:1473–1475.
- 26 Wang J, Gao S, Mostovoy Y, Kang Y, Zagoskin M, Sun Y, Zhang B, White LK, Easton A, Nutman TB,
27 et al. 2017. Comparative genome analysis of programmed DNA elimination in nematodes. *Genome*
28 *Res* 27:2001–2014.
- 29 Wang X, Sommer RJ. 2011. Antagonism of LIN-17/Frizzled and LIN-18/Ryk in Nematode Vulva
30 Induction Reveals Evolutionary Alterations in Core Developmental Pathways. *Plos Biol* 9:e1001110.
- 31 Weiss A, Attisano L. 2013. The TGFbeta Superfamily Signaling Pathway. *Wiley Interdiscip Rev Dev*
32 *Biology* 2:47–63.
- 33 Werner MS, Sieriebriennikov B, Loschko T, Namdeo S, Lenuzzi M, Dardiry M, Renahan T, Sharma DR,
34 Sommer RJ. 2017. Environmental influence on *Pristionchus pacificus* mouth form through different
35 culture methods. *Sci Rep-uk* 7:7207.

- 1 Wilecki M, Lightfoot JW, Susoy V, Sommer RJ. 2015. Predatory feeding behaviour in *Pristionchus*
 2 nematodes is dependent on phenotypic plasticity and induced by serotonin. *J Exp Biol* 218:1306–
 3 1313.
- 4 Witte H, Moreno E, Rödelberger C, Kim J, Kim J-S, Streit A, Sommer RJ. 2015. Gene inactivation using
 5 the CRISPR/Cas9 system in the nematode *Pristionchus pacificus*. *Dev Genes Evol* 225:55–62.
- 6 Yang Y, Qiao Y, Chen J, Qiu H, Chen S. 2019. Gene structure and expression patterns of *Acclaf-1*, a
 7 TGF- β type I receptor in *Ancylostoma caninum*. *Parasitol Res* 118:817–828.
- 8 You Y, Kim J, Raizen DM, Avery L. 2008. Insulin, cGMP, and TGF- β Signals Regulate Food Intake and
 9 Quiescence in *C. elegans*: A Model for Satiety. *Cell Metab* 7:249–257.
- 10 Zhang X, Zhang Y. 2009. Neural-Immune Communication in *Caenorhabditis elegans*. *Cell Host Microbe*
 11 5:425–429.
- 12 Zhang X, Zhang Y. 2012. DBL-1, a TGF- β , is essential for *Caenorhabditis elegans* aversive olfactory
 13 learning. *Proc National Acad Sci* 109:17081–17086.
- 14 Zhang YE. 2017. Non-Smad Signaling Pathways of the TGF- β Family. *Csh Perspect Biol* 9:a022129.

Figure legends

Fig 1. The evolution of the TGF- β signalling pathway in nematodes. (A) Schematic representation of the two main TGF- β signalling pathway and their main components in nematodes. (B) A phylogeny of 9 nematodes species (left), and the number of orthologous genes in each species. The TGF- β ligands *dbl-1*, *tig-2*, and *unc-129* were assigned to the same orthogroup, and were referred to as *dbl-1*-like. (C) The gene tree of *daf-7* genes in the genus *Pristionchus*. An unscaled phylogeny in the legend shows the relationship of the genus *Pristionchus* (left).

Fig 2. Conservation and diversification of canonical TGF- β mutant phenotypes. (A) Representative images of TGF- β mutants with morphological body size defects. Scale bar = 100 μ m. (B) Length of TGF- β mutants after 72 hours growth and fed on OP50. Data is represented as a box plot with several mutants showing statistically significant body length abnormalities (Wilcoxon Mann Whitney test with Bonferroni correction (non-significant (ns), p-value ≤ 0.05 (*), ≤ 0.01 (**), ≤ 0.0001 (****)). A minimum of 40 animals were measured for each mutant. (C) Image of a *P. pacificus* J2 larvae alongside a dauer (*) larvae showing their morphological difference. Scale bar = 100 μ m (D) Number of dauer stage animals observed under two different culture conditions. *Ppa-hsd-2(csu60)* is a control for *daf-c* phenotype. (E) Mean adult *Ppa-daf-7* mutants' response to 1% methyl myristate (MM). *Ppa-hsd-2(csu60)* is a control for enhanced attraction to MM (Carstensen et al. 2021a). The *Ppa-daf-7.1*; *Ppa-daf-7.2* double mutant shows significantly higher attraction to 1% methyl myristate compared to wildtype. (Wilcoxon Mann Whitney test with Bonferroni correction (non-significant (ns), p-value ≤ 0.01 (**), ≤ 0.0001 (****)). At least 10 assays were performed for all conditions.

Fig 3. TGF- β mutant are associated with the phenotypically plastic mouth form fate. (A) *P. pacificus* mouth forms one of two morphs. Eu animals have two teeth with a wide mouth and are omnivores capable of predation on the larvae of other nematodes whereas St animals have a single tooth with a narrower mouth and are strictly microbivores. Scale bar = 10 μ m. Dorsal tooth is false coloured blue in both forms and sub-ventral tooth is red and only present in the Eu morph. (B) Mouth-form ratios across all TGF- β mutants generated. Mouth-form frequencies are the mean of five independent replicates. Two-way ANOVA followed by Bonferroni correction (non-significant (ns), p-value ≤ 0.001 (**), ≤ 0.0001 (****)). (C) Plots showing normalized enrichment scores (NESs) of the gene set enrichment analysis (GSEA) in GO biological process

and (D) KEGG of *Ppa-tag-68*. The size indicates the number of genes in each gene set. FDR: false discovery rate. (E) Expression pattern of *Ppa-tag-68p::RFP*. Broad expression is observed in many neurons. Top insert shows 3x magnification of the ventral nerve cord (VNC) region and a subset of VNC motor neurons. Bottom insert shows 3x magnification of the head ganglia region. Arrows indicate *P. pacificus* homologues of VC4 and VC5. Scale bar = 50 μ m (F) Oil red O staining to observe lipid storage abundance in WT animals compared to *Ppa-tag-68*. Less Red staining in *Ppa-tag-68* indicates there is less lipid distribution in this mutant. Scale bar = 100 μ m. (G) Quantification of Oil red O lipid staining for at least 64 worms per strain, p-value \leq 0.01 (**).

Fig 4. TGF- β mutant are associated with regulation of predation behaviours. (A) *P. pacificus* Eu mouth-form killing a *C. elegans* larvae. (B) Corpse assays investigating predation efficiency in all TGF- β mutants generated utilising 5 young adult mutant *P. pacificus* predators fed on *C. elegans* larvae. Data is represented as box plots of at least eight replicates. Killing defects were only observed in *Ppa-tag-68* mutants (p -value = 0.006, Wilcoxon Mann Whitney test with Bonferroni correction) (C) Corpse assays investigating potential kin-recognition receptor defects in all TGF- β mutants generated. 20 young adult mutant predators were fed on *P. pacificus* wild-type larvae. Data is represented as box plots of at least eight replicates. No significant defects in kin-recognition receptor function were observed (Wilcoxon Mann Whitney test with Bonferroni correction). (D) Corpse assays investigating potential kin-recognition ligand defects in all TGF- β mutants generated. Young adult wild-type predators were fed on TGF- β mutant larvae. Data is represented as box plots of at least eight replicates. Significant defects in kin-recognition ligand function were observed in *Ppa-daf-7.6* (p -value = 0.003, Wilcoxon Mann Whitney test with Bonferroni correction).

Fig 5. *Ppa-daf-7.6* influences cuticle integrity. (A) Some *Ppa-daf-7* animals have an abnormal body morphology. Scale bar = 100 μ m. (B) Expression pattern of *Ppa-daf-7.6p::GFP*. The strongest and most consistent expression was detected in cell “*” which overlaps with AM5(ASE), expressed by the co-injection marker *Ppa-egl-20p::RFP*. The GFP expressing neuron dorsal to the AM5 is likely the AM4(ASK) amphid neuron (arrow). Scale = 10 μ m. (C) Plots showing normalized enrichment scores (NESs) of the gene set enrichment analysis (GSEA) in GO biological process of *Ppa-daf-7.6*. The size indicates the number of genes in each gene set. Collagen and cuticle associated gene expression is most affected by mutations in *Ppa-daf-7.6*. FDR: false discovery rate.

Figure 1

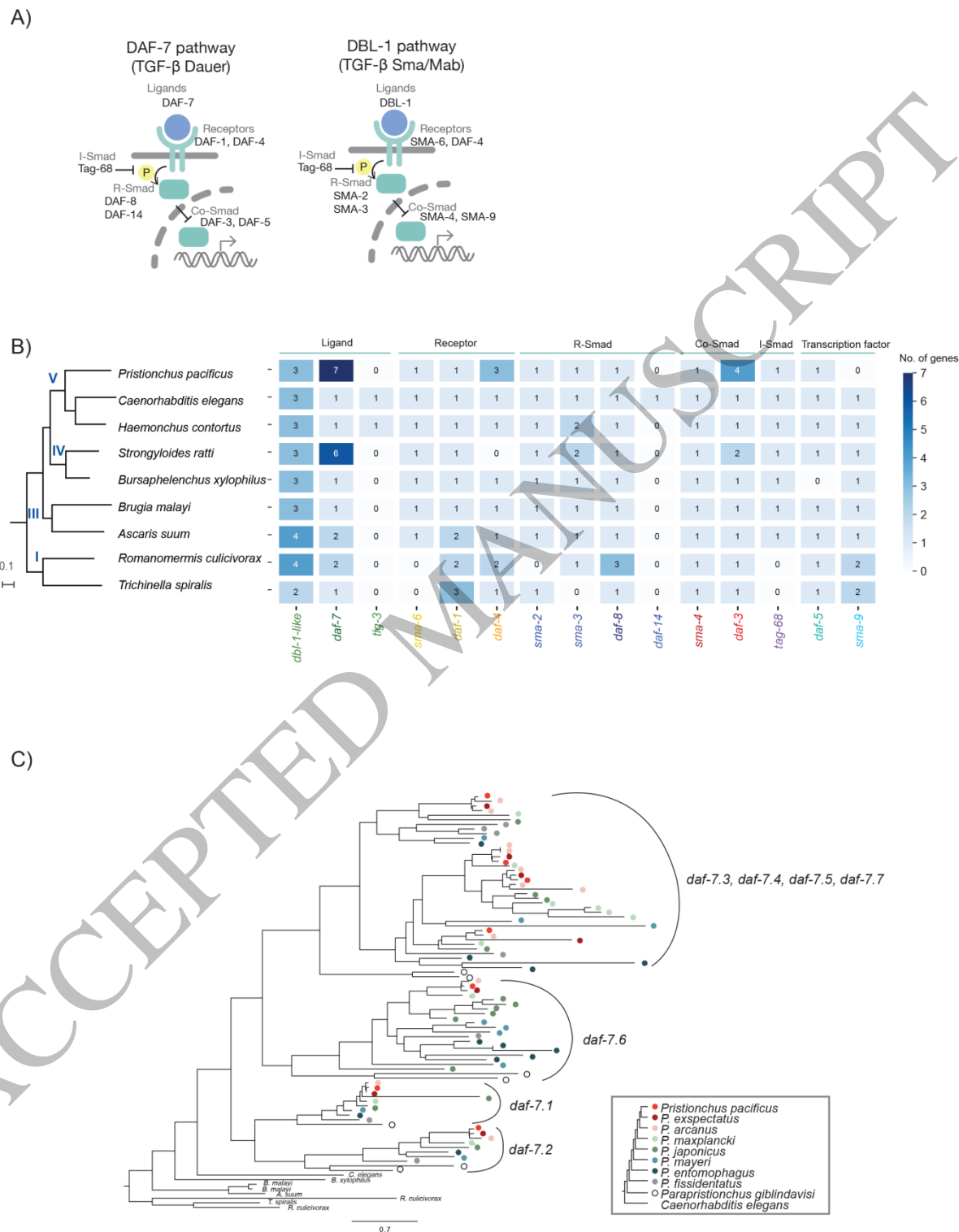


Figure 1
63x66 mm (.03 x DPI)

Figure 2

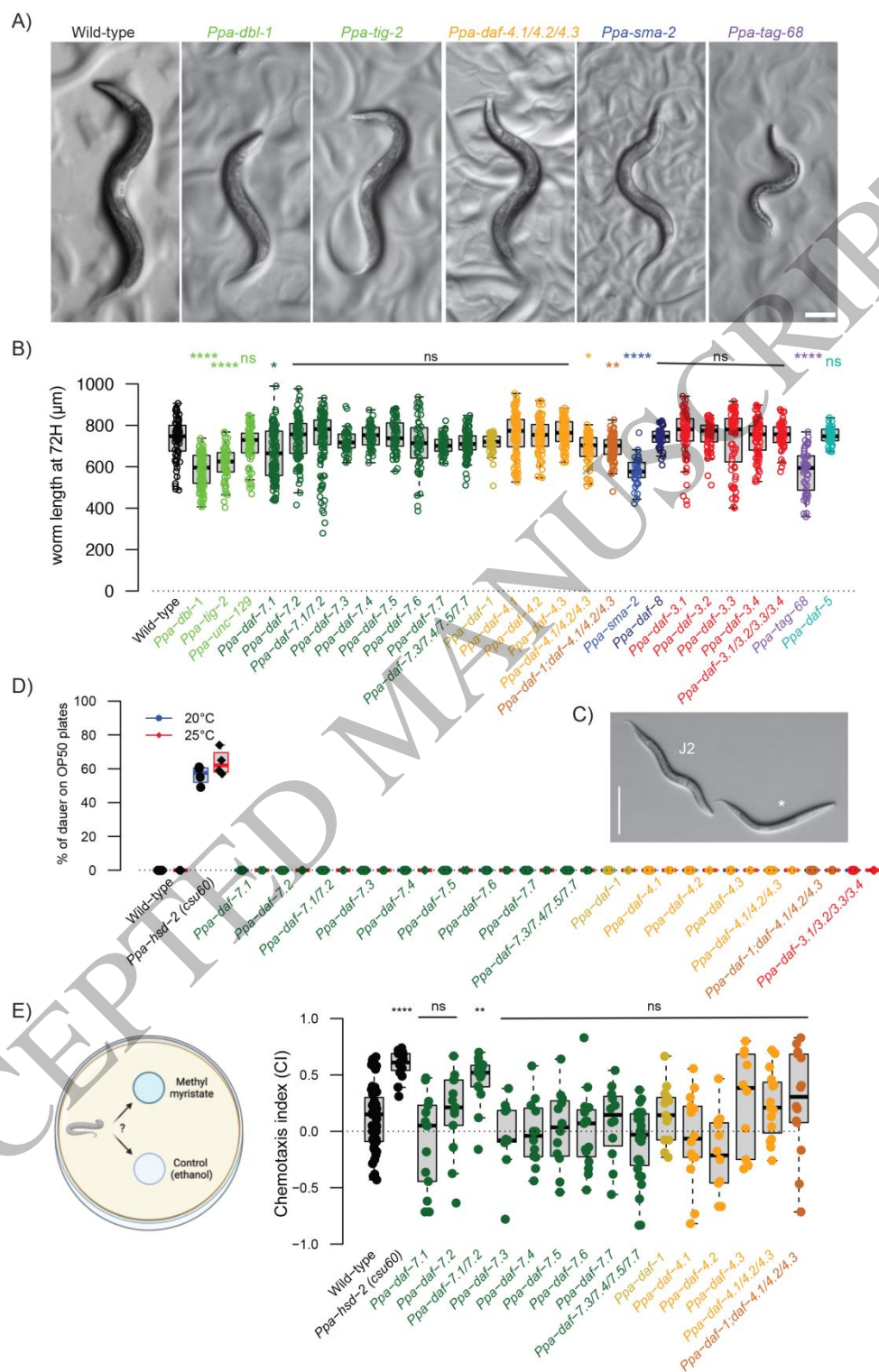


Figure 5

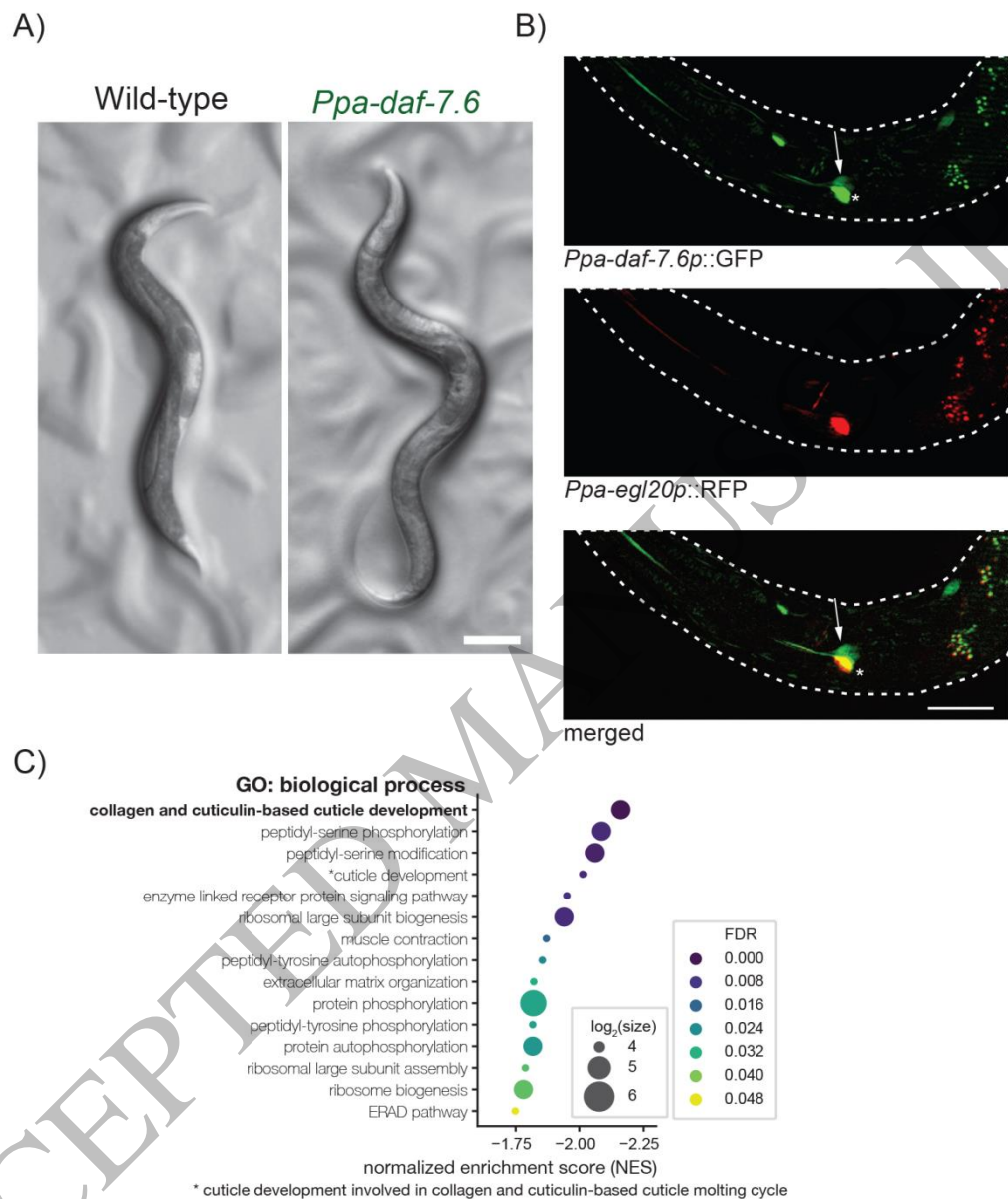


Figure 5
63x66 mm (.03 x DPI)