



Neural signatures of task-related fluctuations in auditory attention and age-related changes

Björn Herrmann^{a,b,c,*}, Burkhard Maess^d, Molly J. Henry^e, Jonas Obleser^f, Ingrid S. Johnsrude^{a,g}

^a Department of Psychology, The University of Western Ontario, London, ON N6A 3K7, Canada

^b Rotman Research Institute, Baycrest, Toronto, ON, Canada

^c Department of Psychology, University of Toronto, Toronto, ON, Canada

^d Brain Networks Group, Max Planck Institute for Human Cognitive and Brain Sciences, Leipzig, Germany

^e Max Planck Research Group "Neural and Environmental Rhythms", Max Planck Institute for Empirical Aesthetics, Frankfurt am Main, Germany

^f Department of Psychology, University of Lübeck, Lübeck, Germany

^g School of Communication Sciences & Disorders, The University of Western Ontario, London, ON, Canada

ARTICLE INFO

Keywords:

Listening

Attention

Cognitive control

Aging

Neural oscillations

Alpha power

ABSTRACT

Listening in everyday life requires attention to be deployed dynamically – when listening is expected to be difficult and when relevant information is expected to occur – to conserve mental resources. Conserving mental resources may be particularly important for older adults who often experience difficulties understanding speech. In the current study, we use electro- and magnetoencephalography to investigate the neural and behavioral mechanics of attention regulation during listening and the effects that aging has on these. We first show in younger adults (17–31 years) that neural alpha oscillatory activity indicates when in time attention is deployed (Experiment 1) and that deployment depends on listening difficulty (Experiment 2). Experiment 3 investigated age-related changes in auditory attention regulation. Middle-aged and older adults (54–72 years) show successful attention regulation but appear to utilize timing information differently compared to younger adults (20–33 years). We show a notable age-group dissociation in recruited brain regions. In younger adults, superior parietal cortex underlies alpha power during attention regulation, whereas, in middle-aged and older adults, alpha power emerges from more ventro-lateral areas (posterior temporal cortex). This difference in the sources of alpha activity between age groups only occurred during task performance and was absent during rest (Experiment S1). In sum, our study suggests that middle-aged and older adults employ different neural control strategies compared to younger adults to regulate attention in time under listening challenges.

1. Introduction

Speech is often difficult to understand, either because of situational demands (e.g., background speech), or because of age-related changes in sensory systems (Pichora-Fuller, 2003; Mattys et al., 2012; Johnsrude and Rodd, 2016). Degraded speech increases the need to recruit cognitive resources such as attention, but this is mentally costly (Westbrook and Braver, 2015; Hornsby et al., 2016; Shenhav et al., 2017) and makes listening effortful (Pichora-Fuller, 2016; Strauss and Francis, 2017; Peelle, 2018; Herrmann and Johnsrude, 2020). Critically, situational demands vary over time as the intensity and character of background speech change, and not all words are equally important for a listener to follow a conversation. Hence, the effort required to comprehend may also fluctuate. A listener could reduce experienced effort and conserve mental resources by specifically attending at times when listening is expected to be difficult or when relevant information is expected

to occur. The current work explores the neural and behavioral signatures of attention during listening and the changes associated with aging.

Electro-/magnetoencephalography (EEG/MEG) measuring neural oscillatory activity in the alpha (~10 Hz) frequency band provides a unique window onto cognition (Klimesch, 1999; Klimesch et al., 2007; Jensen and Mazaheri, 2010). High alpha power has been associated with the recruitment of cognitive resources during listening (Adrian, 1944; Foxe et al., 1998; Fu et al., 2001; Palva and Palva, 2011). For example, alpha power increases when individuals listen actively compared to passively (Dimitrijevic et al., 2017; Henry et al., 2017) or listen to degraded, difficult-to-understand speech (Wöstmann et al., 2015). Alpha activity further appears to be sensitive to temporal dynamics of cognitive processing. Alpha power synchronizes with attended words presented in dichotic speech-listening tasks (Wöstmann et al., 2016; Tune et al., 2018, 2021) and temporally aligns with an anticipated visual stimulus (Rohenkohl and Nobre, 2011; Bonnefond and Jensen, 2012;

* Corresponding author at: Rotman Research Institute, Baycrest, Björn Herrmann, 3560 Bathurst St, North York, Ontario M6A 2E1, Canada.

E-mail address: bherrmann@research.baycrest.org (B. Herrmann).

<https://doi.org/10.1016/j.neuroimage.2023.119883>.

Received 30 November 2022; Received in revised form 11 January 2023; Accepted 15 January 2023

Available online 16 January 2023.

1053-8119/© 2023 The Authors. Published by Elsevier Inc. This is an open access article under the CC BY-NC-ND license

(<http://creativecommons.org/licenses/by-nc-nd/4.0/>)

Payne et al., 2013). Here, we focus on how alpha activity changes over time as individuals direct attention to times at which key information is expected to occur during challenging listening.

Older adulthood is associated with reduced cognitive control abilities, including attentional control (Braver and Barch, 2002; Braver, 2012; Zanto and Gazzaley, 2017). Consistent with age-related reductions in cognitive control, behavioral performance and attention-related lateralization of alpha power in visuospatial tasks is reduced in older compared to younger adults (Zanto et al., 2011; Sander et al., 2012; Hong et al., 2015; Leenders et al., 2018; Dahl et al., 2019). In active listening tasks, alpha power typically increases relative to baseline (Wöstmann et al., 2015; Dimitrijevic et al., 2017; Henry et al., 2017), but older adults show weaker power increases (Wöstmann et al., 2015; Rogers et al., 2018) or even suppression of alpha power compared to younger individuals (Henry et al., 2017; Getzmann et al., 2020). Moreover, attention-related lateralization of alpha power in auditory spatial tasks appears to be reduced in older compared to younger adults (Getzmann et al., 2020) and in adults with hearing impairment compared to those without (Bonacci et al., 2019). However, from these works it is unclear whether attending to key points in time during challenging listening is affected by aging.

The current study aims to answer how alpha activity changes as individuals direct attention to key information in time during challenging listening and how attention-related alpha activity changes with age. Participants listened to 10-s white noise sounds, detecting a gap target that they were informed occurred in the first half of the sound, or in the second half. This manipulation allows us to capture neural activity and behavior as listeners flexibly deploy attention either early or late in an auditory stimulus. To establish the experimental paradigm and examine the relation between alpha power and evolving attentional demands, we first use EEG to study whether neural alpha power indexes the deployment of attention during listening in younger adults (Experiment 1) and whether alpha power changes with the degree of expected listening difficulty in younger adults (Experiment 2). We then use MEG in younger, and in middle-aged and older, adults to identify the neural sources underlying attention deployment during listening and investigate whether attending, as indexed by alpha power and behavior, differs between younger, and middle-aged and older, adults (Experiment 3). Finally, we ask whether differences between age groups are observed only when a task is performed, or whether they are also present during resting-state alpha recording (Experiment S1).

2. General methods

2.1. Participants

In total, 132 male and female adults of varying age participated in the experiments of the current study. Different participants were recruited for each of the three main experiments and the one supplementary experiment (see Experiment S1 in the Supplemental Materials). Demographic details are described below for each experiment individually. Participants reported no neurological disease or hearing impairment and were naïve to the purpose of the experiment. Participants gave written informed consent prior to the experiment and were paid for their participation. The study was conducted in accordance with the Declaration of Helsinki, the Canadian Tri-Council Policy Statement on Ethical Conduct for Research Involving Humans (TCPS2–2014), and approved by the Nonmedical Research Ethics Board of the University of Western Ontario (protocol ID: 106,570).

2.2. Stimulation apparatus

All EEG sessions (Experiments 1 and 2) were carried out in a sound-attenuating booth. Sounds were presented via Sennheiser (HD 25-SP II) headphones and a Steinberg UR22 (Steinberg Media Technologies)

external sound card. Stimulation was controlled by a PC (Windows 7) running Psychtoolbox in MATLAB (MathWorks Inc.).

All MEG sessions (Experiments 3 and S1) were carried out in an electromagnetically shielded, sound-attenuating room (Vacuumschmelze, Hanau). Sounds were presented via in-ear phones and the stimulation was controlled by a PC (Windows XP) running Psychtoolbox in MATLAB.

2.3. Acoustic stimulation and procedure

At the beginning of Experiments 1–3, each participant's hearing threshold was measured for a white noise stimulus using a methods of limits procedure, which we have described in detail in previous work (Herrmann and Johnsrude, 2018). Acoustic stimuli were presented at 50 dB (Experiments 1 and 2) or 45 dB (Experiment 3) above the individual's hearing threshold (sensation level).

Acoustic stimuli during the main experimental procedures were 10-s white noise sounds that each contained one short gap (Fig. 1A). The participants' task was to press a button as soon as they detected the gap (Henry and Obleser, 2012; Henry et al., 2014, 2016; Henry et al., 2017). The white noise 0.4 s prior to and 0.1 s after a gap was identical for each sound, whereas the remainder of the 10-s white noise differed from trial to trial. This ensured that the probability of detecting a gap would be unaffected by trial-by-trial acoustic variations just prior and subsequent to a gap. Gap duration was titrated for each individual to approximately 70–80% detected gaps in 2–4 training blocks (~2.5 min each) prior to the main experiment. The noise stimuli presented during training each incorporated two gaps presented at random times at least 2 s apart, and participants had to press a response button as soon as they detected a gap.

For the main experiment, the gap occurred within a 2.5-s window either within the first half (1.8–4.3 s) or within the second half (6.3–8.8 s) of the 10-s white-noise sound (Fig. 1A). Sounds were separated by a 2-s inter-stimulus interval. Participants were informed about whether the gap would occur in the first or the second half of the sound and this expectation was never violated. Participants could thus orient their attention in time, but they did not know exactly when, within the cued half of the sound, the gap would occur. Trials in which the gap occurred in the first half and trials in which the gap occurred in the second half of the sound were presented in separate blocks. The number of blocks and the number of trials per block are described below for each experiment separately.

2.4. Behavioral data analysis

For each sound trial, as long as the gap has not yet occurred, the instantaneous probability of the gap's occurrence within the cued time window (first half; second half) increases monotonically with the passage of time. This is the "hazard rate" (Niemi and Näätänen, 1981; Nobre et al., 2007; Nobre and van Ede, 2018). Response times are expected to be faster for gaps occurring late compared to early within a cued time window (Niemi and Näätänen, 1981; Nobre et al., 2007). This "hazard-rate effect" indicates successful allocation of attention in time (Nobre et al., 2007). Analyzing behavioral data as a function of time within a cued time window allows us to capture whether individuals orient attention in time during listening.

A gap was considered detected (i.e., a hit) if a response was made between 0.1 and 1.2 s after gap onset, and undetected (i.e., a miss) if no button was pressed within that time window. In order to investigate the effect of the passage of time on behavioral performance, behavioral data were analyzed as a function of the gap time within a cued sound half (ranging from 0 to 2.5 s). In detail, hit rates were analyzed by calculating a logistic regression (generalized linear model with a binomial/logit link function; Tune et al., 2021) that relates single-trial responses to gap times. For the response times (hazard-rate effect; Niemi and Näätänen, 1981; Nobre et al., 2007), a linear function was fit to relate single-

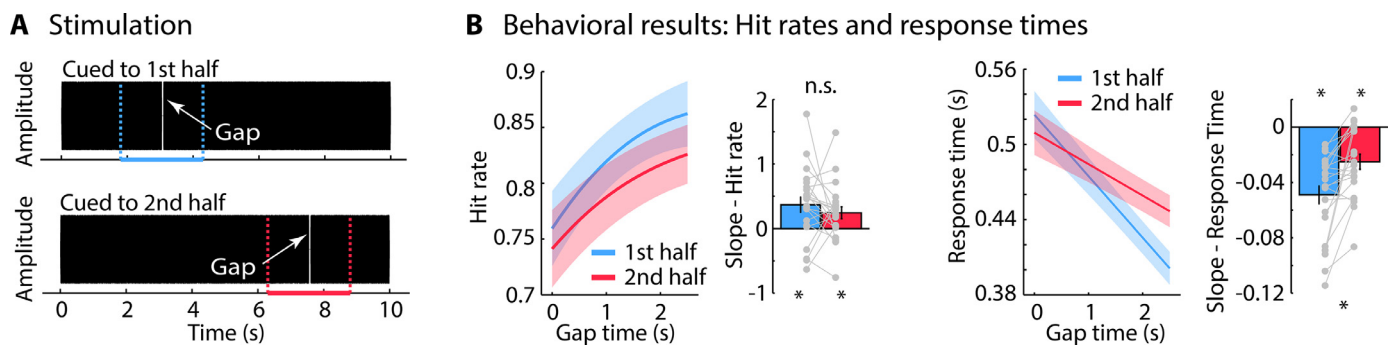


Fig. 1. Stimulus representation and behavioral performance for Experiment 1. **A:** Participants were presented with 10-s white noises that contained one gap. The gap occurred within a 2.5-s window either within the first half (1.8–4.3 s) or within the second half (6.3–8.8 s) of the noise (colored dashed lines). Participants were cued as to whether the gap would occur in the first or the second half of the sound, allowing them to orient their attention in time. Participants did not know exactly when, within the cued half of the sound, the gap would occur. **B:** Predicted hit rates and response times from logistic and linear fits, respectively, as a function of gap occurrence within the cued 2.5-s window. The x-axis reflects the gap time relative to the onset of the cued time window (1.8 s and 6.3 s for first half and second half, respectively). Slopes from logistic (hit rate) and linear (response time) fits are plotted as bar graphs and individual data points. Error bars and shadings reflect the standard error of the mean. * $p \leq 0.05$, n.s. – not significant.

trial response times to gap times. The logistic regression (hit rate) and linear function (response time) were fit separately for each participant and condition (e.g., participants cued to the first vs second half of the sound). The slope of the fits describes the relation between hit rate / response time and gap time, and was used as the dependent measure.

2.5. EEG/MEG recordings and preprocessing

Details about EEG and MEG recordings and preprocessing are provided for each experiment below. In short, EEG (16 electrodes) and MEG (204 channels) data were high-pass filtered at 0.7 Hz, low-pass filtered at ~ 30 Hz, and divided into epochs ranging from -2 to 12 s time-locked to sound onset. Independent components analysis (ICA; Makeig et al., 1996) was used to identify and suppress activity related to blinks, horizontal eye movements, and the heart.

2.6. Wavelet analysis and alpha power

Wavelet coefficients were calculated by convolving single-trial data epochs (-2 to 12 s) with Morlet wavelets. For each participant, trial, and channel, wavelet coefficients were calculated for frequencies ranging from 1 to 20 Hz (in steps of 0.5 Hz for Experiments 1 and 2; in steps of 1 Hz for Experiment 3) and time points ranging from -1.5 to 10 s (in steps of 0.0156 s for Experiments 1 and 2; in steps of 0.024 s for Experiment 3). Single-trial time-frequency power representations were obtained by squaring the magnitude of the complex wavelet coefficients. Time-frequency power was averaged across trials for each cue condition (first half; second half) and baseline corrected using relative change (Capilla et al., 2014; Wilsch et al., 2015; Dimitrijevic et al., 2017; Henry et al., 2017; Fiedler et al., 2021). That is, the mean power preceding sound onset (-1.5 to -0.2 s) was subtracted from the power values at each time point. The resulting values were divided by the mean power in the pre-sound onset time window (-1.5 to -0.2 s).

Auditory alpha activity often covers a frequency band below 10 Hz (Niedermeyer, 1990; Tiihonen et al., 1991; Lehtelä et al., 1997; Obleser et al., 2012; Billig et al., 2019) compared to the traditional occipital alpha activity peaking at about 10 Hz (Berger, 1929). Indeed, in the experiments of the current study, the frequency of alpha activity was significantly lower than 10 Hz (Figure S1). Alpha power was thus averaged across frequencies between 8 and 10 Hz. This lower frequency band also avoids contributions of power suppressions to the average that were occasionally present at higher frequencies (e.g., Figs. 4A 6A and B; small variations in the selected frequency band do not affect the current results). Please note that analyses for the canonical 8–12 Hz frequency band yielded test statistics that did not differ meaningfully from those

for the 8–10 Hz frequency band (test statistics for all alpha power analyses for the 8–12 Hz frequency band are provided in the Supplementary Materials).

In order to investigate whether alpha power is sensitive to participants attending to the first versus second half of the sound, we averaged alpha power in the 0.8-s time interval prior to the 2.5 s during which a gap could occur in the two cue conditions (first interval: 1–1.8 s; second interval: 5.5–6.3 s). Using alpha power as a dependent measure, an rmANOVA was calculated including the within-participants factors Time Interval (first interval; second interval) and Cue (first half; second half). For Experiment 2, the within-participants factor Task Difficulty (easy; difficult) was additionally included. For Experiment 3, we included the additional between-participants factor Age Group (younger; middle-aged and older).

2.7. Statistical analysis

The experiments reported here were not preregistered. Experimental manipulations were within-participants factors and age group in Experiments 3 and S1 was a between-participants factor. Differences between experimental conditions were thus assessed using one-sample t-tests, paired-samples t-tests, and repeated-measures ANOVAs (rmANOVAs). Age-group differences in Experiment 3 (and Experiment S1) were assessed using a between-participants factor in rmANOVAs or independent-samples t-tests. Reporting of statistical results includes test statistic, degrees of freedom, significance level, and effect size. Details about statistical analyses are provided for each experiment separately below. Throughout the manuscript, effect sizes are provided as partial eta squared (η^2_p) for ANOVAs and Cohen's d for t-tests.

Experiment 1: Investigation of attention in time during listening

3. Methods

3.1. Participants

Twenty-two participants were recruited for Experiment 1 (age range: 18–31 years; median: 20 years; 14 females and 8 males). For two participants, data from two blocks were excluded because recording of behavioral responses malfunctioned.

3.2. Procedures

Participants listened to 10-s white-noise sounds in six blocks, each containing 40 trials ($N = 50$ for eight participants). Within each block,

a gap could occur at one of 40 (50) uniformly spaced times during a 2.5 s window, randomly drawn without replacement. In three of the six blocks, the gap always occurred within a 2.5-s window in the first half (1.8–4.3 s), whereas in the other three blocks, the gap always occurred within the second half (6.3–8.8 s) of the 10-s white-noise sound (Fig. 1A). Hence, participants were presented with 120 (150) trials per cue condition. For each block, participants were cued as to whether the gap would occur in the first or the second half of the sound. Blocks with gaps occurring in the first versus second half of the sound alternated within an experimental session and the starting condition alternated across participants.

3.3. Behavioral analysis

A dependent samples *t*-test was used to compare overall hit rate and response times between the two cue conditions (first half; second half). The relationship between gap time and behavioral performance was assessed by comparing hit rate/response time slopes against zero using a one-sample *t*-test. A dependent-samples *t*-test was calculated to compare slopes between cue conditions.

3.4. EEG recordings and preprocessing

EEG was recorded at a 1024-Hz sampling rate from 16 electrodes (Ag/Ag-Cl-electrodes; 10–20 placement) and additionally from the left and right mastoids (BioSemi, Amsterdam, The Netherlands; 208 Hz low-pass filter). Electrodes were referenced online to a monopolar reference feedback loop connecting a driven passive sensor and a common mode sense active sensor, both located posterior on the scalp.

Offline data analysis was carried out using MATLAB software (v7.14; MathWorks, Inc.). Line noise (60 Hz) was suppressed using an elliptic filter. Data were re-referenced to the average mastoids, high-pass filtered at a cutoff of 0.7 Hz (2449 points, Hann window), and low-pass filtered at a cutoff of 30 Hz (111 points, Hann window). Data were divided into epochs ranging from –2 to 12 s (time-locked to sound onset) and ICA (runica method, Makeig et al., 1996; logistic infomax algorithm, Bell and Sejnowski, 1995; Fieldtrip implementation Oostenveld et al., 2011) was used to identify and suppress activity related to blinks and horizontal eye movements. Epochs that exceeded a signal change of more than 250 μ V for any electrode following ICA were excluded from analyses.

Time-frequency power was calculated for each cue condition (first half; second half) and alpha-power time courses were calculated as the mean power across the 8–10 Hz frequencies (see General Methods). Alpha activity was averaged across a parietal electrode cluster (Pz, P4, P3) because previous work shows that attention-related alpha activity is strongest at parietal sensors/electrodes and that it originates from parietal cortex (van Dijk et al., 2008; Wöstmann et al., 2015; Henry et al., 2017; Heideman et al., 2018; Leenders et al., 2018; see also Experiment 3). We averaged alpha power in the 0.8-s time interval prior to the 2.5 s during which a gap could occur in the two cue conditions (first interval: 1–1.8 s; second interval: 5.5–6.3 s). An rmANOVA was calculated using alpha power as the dependent measure and the within-participants factors Time Interval (first interval; second interval) and Cue (first half; second half).

4. Results and discussion

Gap-detection hit rates were generally higher ($t_{21} = 3.045$, $p = 0.006$, $d = 0.649$) and response times generally faster ($t_{21} = 2.237$, $p = 0.036$, $d = 0.477$) for gaps occurring in the first compared to the second half of the sound (Fig. 1B). This suggests that focusing attention to later parts of the sound is more difficult than focusing on earlier parts. Listeners may struggle more to precisely focus attention when gaps occur in the second half of the sound due to well-known

higher variability in time-interval estimations for longer relative to shorter intervals (Weber's law; Gibbon, 1977; Buhusi and Meck, 2005; Grondin, 2014).

Critically, gap-detection hit rates were higher ($t_{21} = 3.746$, $p = 0.001$, $d = 0.799$) and response times faster ($t_{21} = 7.115$, $p = 5.11 \times 10^{-7}$, $d = 1.517$) for gaps that occurred later compared to earlier within the cued 2.5-s window (averaged across attention conditions). This was true regardless of whether that window was in the first or second half of the trial (see slopes in Fig. 1B). The faster response times for gaps occurring later within a cued half indicate that participants successfully oriented attention in time (hazard-rate effect; Niemi and Näätänen, 1981; Nobre et al., 2007). This response-time effect was smaller when participants attended to the second compared to the first half of the sound ($t_{21} = 4.093$, $p = 5.2 \times 10^{-4}$, $d = 0.873$). The reduced hazard-rate effect suggests that individuals' estimation of when a gap may occur is reduced when gaps occur in the second compared to the first half of the sound. This, again, is consistent with higher variability in time estimations for longer relative to shorter intervals (Gibbon, 1977; Buhusi and Meck, 2005; Grondin, 2014).

Alpha power was sensitive to whether participants attended to the first versus second half of the sound: alpha power increased for longer when participants knew the gap would occur later, that is, in the second compared to the first half (Fig. 2A and B). For the rmANOVA, we observed a Time Interval \times Cue interaction ($F_{1,21} = 14.389$, $p = 0.001$, $\eta_p^2 = 0.407$): Alpha power was larger in the first interval (1–1.8 s) compared to the second interval (5.5–6.3 s) when participants were cued to the first half ($F_{1,21} = 7.549$, $p = 0.012$, $\eta_p^2 = 0.264$), but alpha power was larger in the second interval (5.5–6.3 s) compared to the first interval (1–1.8 s) when participants were cued to the second half of the sound ($F_{1,21} = 13.176$, $p = 0.002$, $\eta_p^2 = 0.386$; Fig. 2B, bottom). In fact, alpha power increased throughout a trial up to gap occurrence and decreased thereafter (Fig. 2C).

The results from Experiment 1 show that individuals attend in time during listening according to when they expect a target, and alpha power indicates when in time individuals listen attentively. Our core paradigm is thus suitable for the study of attention regulation in time during listening.

Experiment 2: Attention regulation at different listening-difficulty levels

Next, we turned to the observation that middle-aged and older adults often experience listening challenges in their everyday lives (Gatehouse and Noble, 2004; Pichora-Fuller et al., 2016; Strauss and Francis, 2017; Peelle, 2018). Individuals can conserve mental resources associated with listening challenges by regulating how much attention is deployed based on the expected difficulty of a listening situation (Brehm and Self, 1989; Richter et al., 2016; Herrmann and Johnsrude, 2020). Alpha power should be sensitive to such regulations of attention based on expected listening difficulty if it is to be useful to the community, but this has not been investigated directly. Experiment 2 aims to investigate how cuing a listener to attend to specific points in time and task difficulty affect behavior and neural alpha activity.

5. Methods

5.1. Participants

Experiment 2 included 20 younger adults (age range: 17–30 years; median: 18; 16 female and 4 males).

5.2. Procedures

Similar to Experiment 1, we manipulated when a gap occurred (first half; second half), and the cue given prior to a block of trials, in order to manipulate attention in time. In addition, task difficulty was

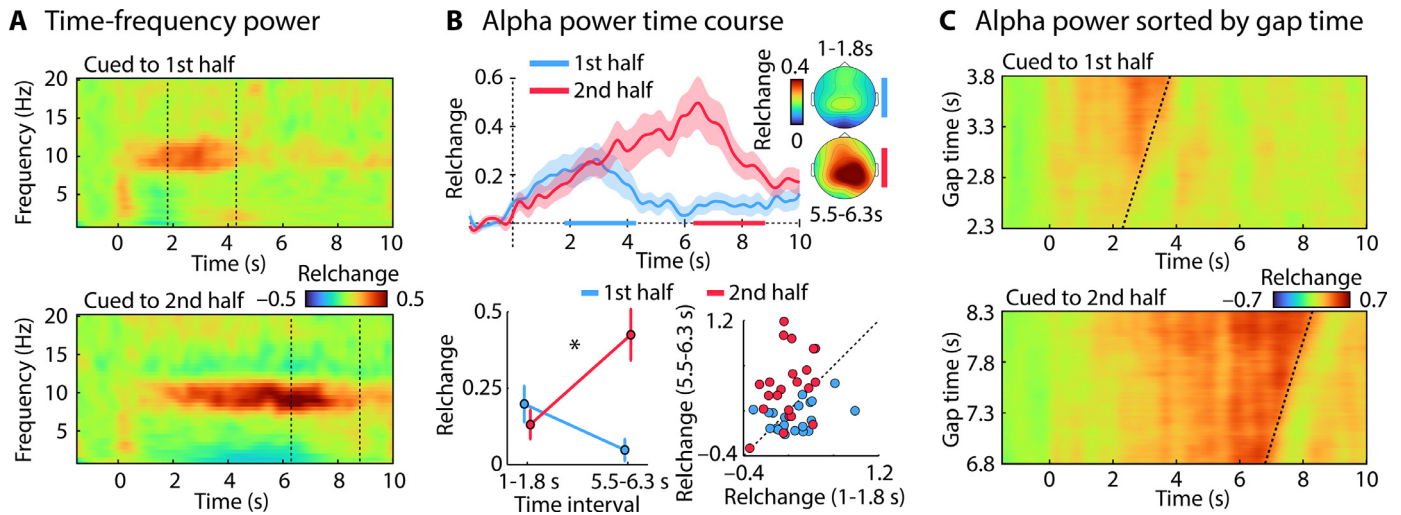


Fig. 2. Sensitivity of alpha power to attentive listening in time. **A:** Time-frequency power (averaged across parietal electrodes; dashed lines mark the 2.5-s windows [gap occurrence]). **B:** Alpha-power (8–10 Hz) time course for the two cue conditions (first half; second half). Colored lines on the x-axis mark the 2.5-s windows (gap occurrence). Mean alpha power in the 0.8-s time interval prior to the 2.5-s gap window (bottom). **C:** Alpha-power time courses sorted by gap occurrence. The dashed line indicates the gap onset. Error bars and shadings reflect the standard error of the mean. * $p \leq 0.05$, n.s. – not significant.

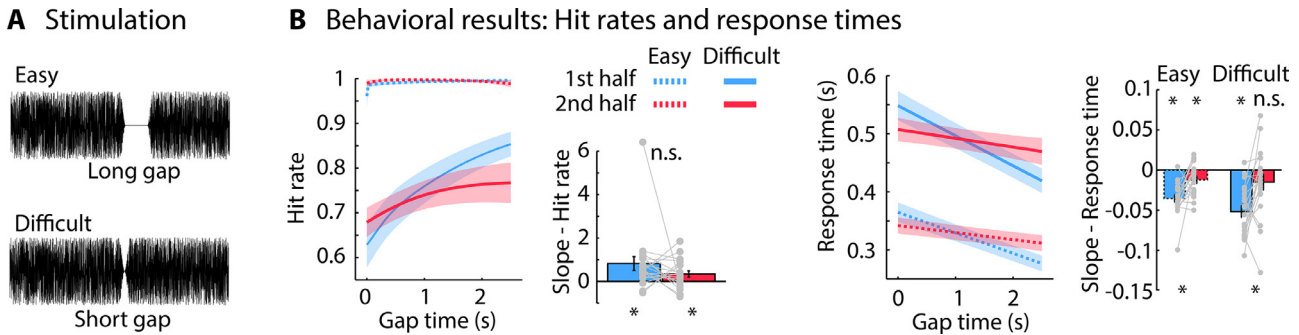


Fig. 3. Stimulus representation and behavioral performance for Experiment 2. **A:** Schematic representation of the gap duration for easy and difficult trials (long and short gap durations, respectively). The duration of the short gap was titrated for each individual to approximately 80% detection rate. The duration of the long gap was three times the duration of the short gap. **B:** Predicted hit rates and response times from logistic and linear fits, respectively, as a function of gap occurrence within the 2.5-s window, for both cue (first half; second half) and task-difficulty (easy [dashed]; difficult [solid]) conditions. The x-axis reflects the gap time relative to the onset of the cued time window (1.8 s and 6.3 s for first half and second half, respectively). Slopes from logistic (hit rate) and linear (response time) fits are plotted on the right. Slope for hit rates from the easy condition were less reliable due to ceiling effects; they are thus not displayed. Error bars and shadings reflect the standard error of the mean. * $p \leq 0.05$, n.s. – not significant.

manipulated by changing the duration of the gap (Fig. 3A). The estimated gap-duration threshold from the training blocks was used for difficult, short-duration trials (as in Experiment 1), whereas three times the estimated threshold was used for easy, long-duration trials. The different cue (first half; second half) and task-difficulty (easy; difficult) trials were presented in separate blocks. Participants were cued prior to each block whether the gap would occur in the first or the second half of the sound, and whether gap detection would be easy or difficult, and these expectations were never violated. Participants thus had prior knowledge about which sound conditions they would encounter so that they could regulate their attention. Participants listened to 35 trials per block and each of the four block types was presented twice. Within each block, a gap could occur at one of 35 uniformly spaced times during the cued 2.5 s window (cued to first half: 1.8–4.3 s; cued to second half: 6.3–8.8 s), randomly drawn without replacement. Block order was organized such that cue conditions alternated (first half; second half), whereas task-difficulty conditions (easy; difficult) were presented in two consecutive blocks and alternated to create a balanced design. Starting conditions alternated across participants.

5.3. Behavioral data analysis

A rmANOVA was used to compare overall hit rate and response times between the two cue conditions (first half; second half) and the two task-difficulty conditions (easy; difficult). The relationship between gap time and behavioral performance was assessed by comparing hit rate/response time slopes against zero using a one-sample *t*-test. A rmANOVA and *t*-tests were used to compare slopes between the cue conditions (first half; second half) and the task-difficulty conditions (easy; difficult).

5.4. EEG recording and analysis

EEG recording and preprocessing was conducted as for Experiment 1.

Alpha power (8–10 Hz) was averaged in the 0.8-s time interval prior to the cued 2.5-s time window during which a gap could occur in the two cue conditions (first interval: 1–1.8 s; second interval: 5.5–6.3 s), separately for the two cue and task-difficulty conditions. An rmANOVA was calculated using alpha power as the dependent mea-

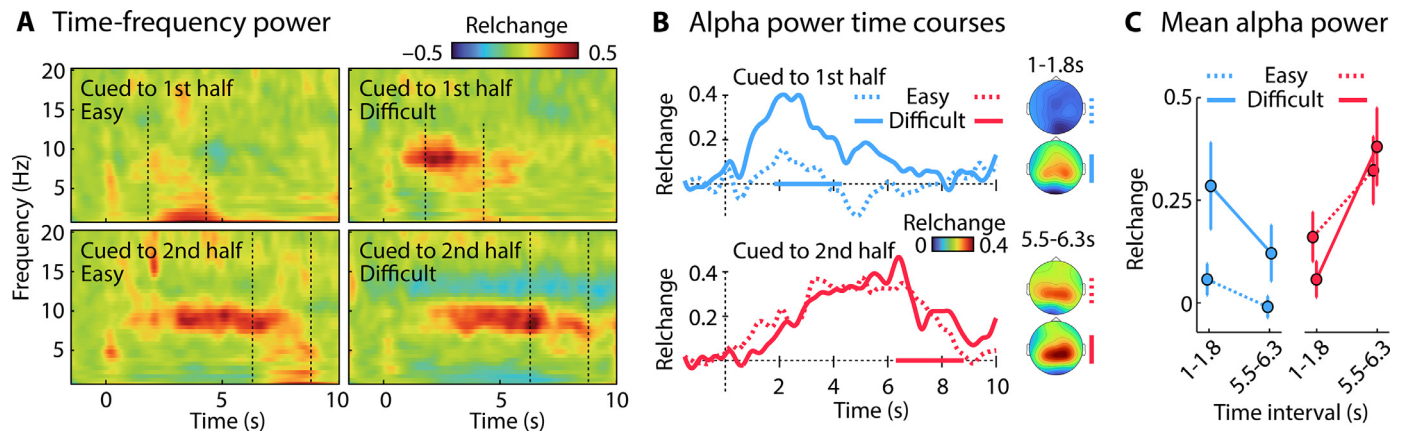


Fig. 4. Sensitivity of alpha power to attentional orienting and task difficulty during listening. **A:** Time-frequency (averaged across parietal electrodes) power representations for each of the four Cue \times Task Difficulty conditions. **B:** Alpha power (8–10 Hz) time courses and topographical distributions. **C:** Mean alpha power in the 0.8-s time interval prior to the 2.5-s gap windows. Error bars and shadings reflect the standard error of the mean. * $p \leq 0.05$, n.s. – not significant.

sure and the within-participants factors Time Interval (first interval; second interval), Cue (first half; second half), and Task Difficulty (easy; difficult).

6. Results and discussion

Fig. 3B depicts the behavioral results for Experiment 2. Hit rates were overall higher ($F_{1,19} = 63.007$, $p = 1.89 \times 10^{-7}$, $\eta_p^2 = 0.768$) and response times faster ($F_{1,19} = 262.594$, $p = 1.4 \times 10^{-12}$, $\eta_p^2 = 0.933$) for easy compared to difficult trials, but did not differ between cue conditions ($p > 0.25$).

Because hit rates for easy trials were at ceiling, the relationship between hit rate and gap time was not analyzed for easy trials. For difficult trials (short gap), hit rates increased with increasing gap time within the cued 2.5-s windows ($t_{19} = 3.598$, $p = 0.002$, $d = 0.804$; averaged across conditions; slopes in Fig. 3B). There was no difference between attention conditions ($p > 0.2$).

Response times decreased with increasing gap time within the cued 2.5-s window (i.e., hazard-rate effect: $t_{19} = 7.698$, $p = 2.96 \times 10^{-7}$, $d = 1.721$; averaged across conditions; Fig. 3B), but this effect was larger when participants attended to the first half compared to the second half of the noise ($F_{1,19} = 25.874$, $p = 6.55 \times 10^{-5}$, $\eta_p^2 = 0.577$). The hazard-rate effect was unaffected by task difficulty ($p > 0.15$), suggesting that participants orient attention in time to the same extent for easy and difficult trials (Fig. 3B).

Time-frequency power representations and alpha power time courses are depicted in Fig. 4A and B, respectively. The rMANOVA for alpha power revealed a Time Interval \times Cue interaction ($F_{1,19} = 21.001$, $p = 2.03 \times 10^{-4}$, $\eta_p^2 = 0.265$). Alpha power was larger in the first interval (1–1.8 s) compared to the second interval (5.5–6.3 s) when participants were cued to the first half ($F_{1,19} = 7.697$, $p = 0.012$, $\eta_p^2 = 0.288$), but alpha power was larger in the second interval (5.5–6.3 s) compared to the first interval (1–1.8 s) when participants were cued to the second half ($F_{1,19} = 21.556$, $p = 1.8 \times 10^{-4}$, $\eta_p^2 = 0.532$; Fig. 4C). These results replicate the results from Experiment 1 by showing that alpha power indicates when in time individuals listen attentively.

In addition, the Time Interval \times Cue \times Task Difficulty interaction was marginally significant ($F_{1,19} = 4.022$, $p = 0.059$, $\eta_p^2 = 0.175$): we conducted an exploratory analysis to understand this marginal interaction in more detail. Separately for each cue condition (first half; second half), a rMANOVA with Time Interval (first interval: 1–1.8 s; second interval: 5.5–6.3 s) and Task Difficulty (easy; difficult) factors was conducted. When participants were cued to the first half of the sound, alpha power was larger for difficult compared to easy trials (effect of Task Difficulty:

$F_{1,19} = 4.980$, $p = 0.038$, $\eta_p^2 = 0.208$), but there was no Time Interval \times Task Difficulty interaction ($p = 0.204$). In contrast, when participants were cued to the second half of the sound, alpha power increased over time in both difficulty conditions, but the increase was steeper for difficult compared to easy trials (Time Interval \times Task Difficulty interaction: $F_{1,19} = 4.638$, $p = 0.044$, $\eta_p^2 = 0.196$).

Experiment 2 shows that alpha power increased with increasing task difficulty when individuals attended to the first half of the sound. When participants attended to the second half of the sound, alpha power increased over time for both easy- and difficult-to-detect gaps, but the rate of alpha power increase over time was larger. That task difficulty had a clearer impact on alpha power when gaps occurred in the first compared to the second half of the sound may be related to overall difficulty differences: Gap detection appears to be easier when gaps occur in the first half compared to the second half of a sound (e.g., Fig. 1B, 5A), possibly due to higher variability in time estimations for longer compared to shorter intervals (Gibbon, 1977; Wearden, 2003; Buhusi and Meck, 2005; Grondin, 2014). Alpha power may thus increase when participants attend to the second half of the sound because orienting and maintaining attention over a longer period may be difficult, independent of the experimentally manipulated difficulty (gap duration).

The results from Experiment 2, together with those from Experiment 1, indicate that alpha power is sensitive both to ‘when’ an individual is listening, as well as to ‘how hard’ they are listening (how effortful it is). Alpha power may therefore be a useful way to measure whether younger, and middle-aged and older, adults differ in how they direct attention to points in time when key information is expected to occur during challenging listening.

Experiment 3: Assessing age differences in attention regulation in time

Experiment 3 aims to investigate whether behavioral and neural indices of attention regulation in time differ between younger, and middle-aged and older adults, and to characterize the brain regions underlying such attention regulation. MEG typically has higher sensitivity, relative to EEG, for the identification of the sources underlying neural responses observed outside of the head, because magnetic fields originating from the brain are less distorted by the skull and scalp than electric potentials (Hämäläinen et al., 1993; Hämäläinen et al., 2002; Hari and Puce, 2017). Hence, in order to identify the sources underlying alpha power changes during attention in time, we recorded MEG in younger, and middle-aged and older, adults using the same experimental procedures as those in Experiment 1 (Fig. 1A).

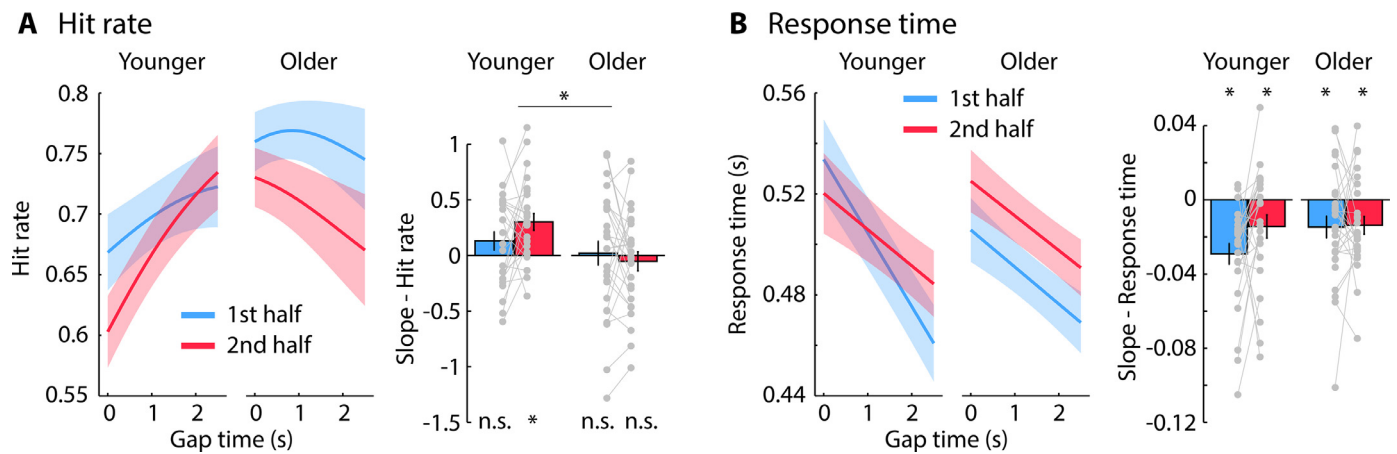


Fig. 5. Behavioral results for younger and middle-aged to older adults. Predicted hit rates and response times from logistic and linear fits, respectively, as a function of gap occurrence within the cued 2.5-s window. The x-axis in panels A and B reflects the gap time relative to the onset of the cued time window (1.8 s and 6.3 s for first half and second half, respectively). Error bars and shadings reflect the standard error of the mean. The label “older” refers to the full group of middle-aged and older adults. * $p \leq 0.05$, n.s. – not significant.

7. Methods

7.1. Participants

Twenty-five younger adults (age range: 20–33 years; median: 26 years; 15 females and 10 males) and twenty-seven middle-aged and older adults (age range: 54–72 years; median: 63 years; 13 female and 14 males) participated in Experiment 3.

Self-rated hearing abilities assessed using the Speech, Spatial and Qualities of Hearing Scale (SSQ; Gatehouse and Noble, 2004) did not differ between age groups ($t_{49} = 0.605$; $p = 0.548$; no SSQ ratings were available for one younger participant). Hearing thresholds for the white-noise sound used in the current study were about 6.5 dB higher for middle-aged and older adults compared to younger adults ($t_{50} = 5.539$, $p = 1.1 \times 10^{-6}$; younger mean [range]: -84.7 dB [-88.9 to -77.4 dB], middle-aged and older mean [range]: -78.2 dB [-85.8 to -68 dB]¹). Thresholds for the middle-aged and older group differed from those for the younger group, but were not markedly elevated for any individual, consistent with normal thresholds for age. A mean threshold difference of 6.5 dB is in line with previous studies that compared younger adults and middle-aged and older adults with clinically ‘normal’ audiometry thresholds (Herrmann et al., 2018, Herrmann et al., 2023, Herrmann et al., 2022). Finally, to account for any potential differences due to subclinical hearing impairment, sounds were presented at 45 dB above the individual hearing threshold (equating for audibility) and the gap duration was titrated for each participant (equating for task performance/difficulty).

None of the participants showed an indication of cognitive impairment as assessed using the 6-Item Cognitive Impairment Test (6CIT; Upadhyaya et al., 2010; Hessler et al., 2017; younger adults: median score: 0, range: 0–2; middle-aged and older adults: median score: 0, range: 0–4; the normal range of the 6CIT is 0–7).

7.2. Procedures

The same experimental procedures as those in Experiment 1 were used (Fig. 1A). Gap duration was titrated for each participant so that approximately 80% of gaps were detected successfully. Middle-aged to

¹ The dB values from the threshold procedure are derived from MATLAB. All values are negative, with more negative values reflecting lower intensities. These dB values can be interpreted relative to each other, whereas the absolute magnitude is related to hardware and software conditions, such as sound card, transducers, and MATLAB internal settings.

older adults required the gap to be longer compared to younger adults ($t_{50} = 4.282$, $p = 8.38 \times 10^{-5}$, $d = 1.189$; mean gap duration and range: younger: 6.72 ms [5.5–8.1 ms], middle-aged and older: 7.87 ms [6–9.9 ms]) in order to achieve a similar detection rate, consistent with previous gap-detection observations (Snell, 1997; Strouse et al., 1998; Humes et al., 2009; Fitzgibbons and Gordon-Salant, 2010).

7.3. Behavioral data analysis

A rmANOVA was used to compare overall hit rate and response times between the two cue conditions (within-participants factor: first half; second half) and the two age groups (between-participants factor: younger; middle-aged and older). The relationship between gap time and behavioral performance was assessed by comparing hit rate/response time slopes against zero using a one-sample t -test. A rmANOVA and t -tests were used to compare slopes between cue conditions (first half; second half) and age groups (younger; middle-aged and older).

7.4. MEG recordings and analysis

Magnetoencephalographic data were recorded using a 306-channel Neuromag Vectorview MEG (Elekta; sampling rate: 1000 Hz, filter: DC–330 Hz) at the Max Planck Institute for Human Cognitive and Brain Sciences in Leipzig, Germany. The signal space separation (SSS) method was used to suppress external interference, interpolate bad channels, and transform individual data to a common sensor space. The common sensor space enables comparison of topographical distributions across participants (Taulu et al., 2004, 2005). We focused on the 204 orthogonal planar gradiometers in 102 locations, because they are most sensitive to magnetic fields originating from sources directly below them (Hämäläinen et al., 1993). Note that the information in magnetometers and gradiometers after SSS correction carry redundant information and thus no information is lost by focusing on gradiometers (Garcés et al., 2017; Herrmann et al., 2018).

Data were high-pass filtered (0.7 Hz; 2391 points, Hann window), low-pass filtered (33.3 Hz, 101 points, Hann window), down-sampled to 500 Hz, and divided into epochs ranging from -2 s to 12 s time locked to sound onset. Independent components analysis (Makeig et al., 1996; Oostenveld et al., 2011) was used to remove noisy channels and activity related to blinks, eye movements, and the heart. Epochs comprising a signal change larger than 300 pT/m in any gradiometer channel following ICA were excluded.

For each participant, time-frequency power was calculated for each cue condition (first half; second half). Alpha-power time courses were calculated by averaging power across the 8 to 10 Hz frequency window. Alpha power (8–10 Hz) was averaged in the 0.8-s time interval prior to the 2.5 s during which a gap could occur in the two cue conditions (first interval: 1–1.8 s; second interval: 5.5–6.3 s). A rmANOVA with within-participants factors Time Interval (first interval; second interval) and Cue (first half; second half), and the between-participants factor Age Group (younger; middle-aged and older) was calculated.

7.5. MEG source reconstruction

Anatomically constrained source localization was used in order to identify the neural sources underlying alpha power. Individual T1-weighted MR images (3T Magnetom Trio, Siemens AG, Germany) were used to construct inner-skull surfaces (volume conductor) and mid-gray matter cortical surfaces (source model; Freesurfer and MNE software). Inner-skull surfaces consisted of a mesh of 2562 vertices and cortical surfaces of 10,242 vertices per hemisphere. No MRI scan was available for one participant from the middle-aged and older adults group and data from this person were thus not considered for source analyses and related statistical analyses. The MR and the MEG coordinate systems were co-registered using MNE software which included an automated and iterative procedure that fitted the >300 digitized head surface points (Polhemus FASTRAK 3D digitizer) to the MR reconstructed head surface (Besl and McKay, 1992). For each participant, a boundary element model (inner skull) was constructed using MNE software and a lead field was calculated using Fieldtrip (Nolte, 2003).

Source reconstructions for time-frequency representations were calculated using dynamic imaging of coherent sources (DICS; Gross et al., 2001) with custom MATLAB scripts. DICS is a beamforming technique that involves estimating a spatial filter at each source location. The cross-spectral density matrix was calculated from the complex wavelet coefficients of all trials in the 8–10 Hz frequency window and 0.8–9.2 s time window, and used to estimate real-numbered spatial filters (using the dominant direction; Gross et al., 2001). The 0.8–9.2 s time window was chosen to ensure that power related to onset or offset responses do not influence the filter calculation. Single-trial wavelet coefficients were projected into source space using these filters and power time courses were calculated similar to the sensor space analysis.

Individual cortical representations were transformed to a common coordinate system (Fischl et al., 1999b) in order to enable region of interest identification based on standard anatomical parcellations (Glasser et al., 2016). To this end, neural activity was mapped to each participant's full Freesurfer source space mesh (>100,000 vertices per hemisphere), spatially smoothed across the surface using an approximation to a 6-mm FWHM Gaussian kernel (Han et al., 2006), and morphed to the standard Freesurfer cortical surface (Fischl et al., 1999a).

7.6. Statistical analysis of source data

Analysis of age-group differences in spatial location of alpha activity focused on a pre-gap time window independent of cue conditions. To this end, alpha power was averaged in the –0.8 to –0.2 s time window prior to each trial's specific gap onset (–0.2 was chosen to avoid that gap-related activity influences pre-gap alpha power). Age-group differences in spatial configuration of alpha activity were assessed by calculating for each participant and brain hemisphere the 3D coordinate at which pre-gap alpha power was maximal. Independent-samples t-tests were used to compare the x, y, and z coordinate between age groups.

Analysis of inter-subject correlation of alpha power maps was additionally used to examine age-group differences in spatial configuration of alpha activity. Each participant's spatial map of pre-gap alpha power was separately correlated with the spatial map of every other participant (vertices were used as samples). For each participant, this

resulted in 50 correlation values. The 50 correlation values were categorized into two categories: correlations with members of the same age group (within) and correlations with members of the other age group (between). For each participant, the average correlation value was calculated for each of the two categories. This resulted in two mean correlation values for each participant, reflecting the degree of similarity of the activation map to individuals within the same versus the other age group. If spatial maps differ between age groups, we would expect larger correlations with within-group than between-group members. We used independent-samples t-tests to test this.

Previous work suggests task-related alpha activity originates from sensory cortices and parietal cortex (Tuladhar et al., 2007; van Dijk et al., 2008; Müller et al., 2015; Wöstmann et al., 2016; Tune et al., 2018). In order to analyze age-group differences in attentional modulation of alpha power, we used Glasser's anatomical parcellation of the cortical surface (Glasser et al., 2016) to obtain vertices for bilateral superior temporal cortex (STC) and bilateral superior parietal cortex (SPC; Fig. 6). Alpha power was averaged within each region, resulting in region-specific alpha-power time courses. Alpha power was averaged in the 0.8-s interval prior to the 2.5 s during which a gap could occur (first interval: 1–1.8 s; second interval: 5.5–6.3 s). An rmANOVA was calculated using the within-participants factors Time Interval (first interval; second interval), Cue (first half; second half), and Region (STC, SPC), and the between-participants factor Age Group (younger; middle-aged and older).

8. Results and discussion

8.1. Age-group differences in behavioural accuracy but not attentional orienting

Analysis of hit rates revealed no overall difference between age groups ($F_{1,50} = 1.457, p = 0.233, \eta_p^2 = 0.028$). Gap-detection hit rates were generally higher for gaps occurring in the first compared to the second half of the sound ($F_{1,50} = 8.312, p = 0.006, \eta_p^2 = 0.143$), as in Experiment 1, perhaps because focusing attention on later parts of the sound is more difficult than focusing on earlier parts.

Critically, hit rates increased with increasing passage of time within the cued 2.5 s window for younger people ($t_{24} = 3.467, p = 0.002, d = 0.693$), but decreased (numerically) for the middle-aged and older adults group ($t_{26} = -0.187, p = 0.853, d = 0.036$) as indicated by the age-group difference between slopes ($F_{1,50} = 4.817, p = 0.033, \eta_p^2 = 0.088$; Fig. 5A).

Analysis of response times revealed no overall difference between age groups ($F_{1,50} = 0.005, p = 0.944, \eta_p^2 < 0.001$). Response times decreased with increasing gap time within a cued 2.5-s time window (i.e., hazard-rate effect; $t_{51} = 6.035, p = 1.81 \times 10^{-6}, d = 0.837$; average across cue conditions; Fig. 5B). There was no effect of age group or interactions involving age group on response times, although there was a trend towards a larger hazard-rate effect when younger adults were cued to the first half of the sound compared to the second half ($t_{24} = 1.792, p = 0.086, d = 0.358$; as for Experiment 1; Fig. 1B), whereas the hazard rate effect did not differ between cue conditions for middle-aged and older adults ($t_{24} = 0.131, p = 0.896, d = 0.025$).

In sum, there were no overall differences in hit rates or response times between younger adults and middle-aged and older adults, since gap duration was manipulated to achieve a hit rate of ~80% for each participant. Response-time data indicate that both younger adults, and middle-aged and older adults, successfully oriented attention in time during listening, although there was some indication that younger adults may use timing information differently (trending slope differences) compared to middle-aged and older adults. A different picture emerged for hit rates: Younger individuals detected more gaps when they occurred later compared to earlier within a cued sound half, whereas no difference was found for middle-aged and older individuals, potentially sug-

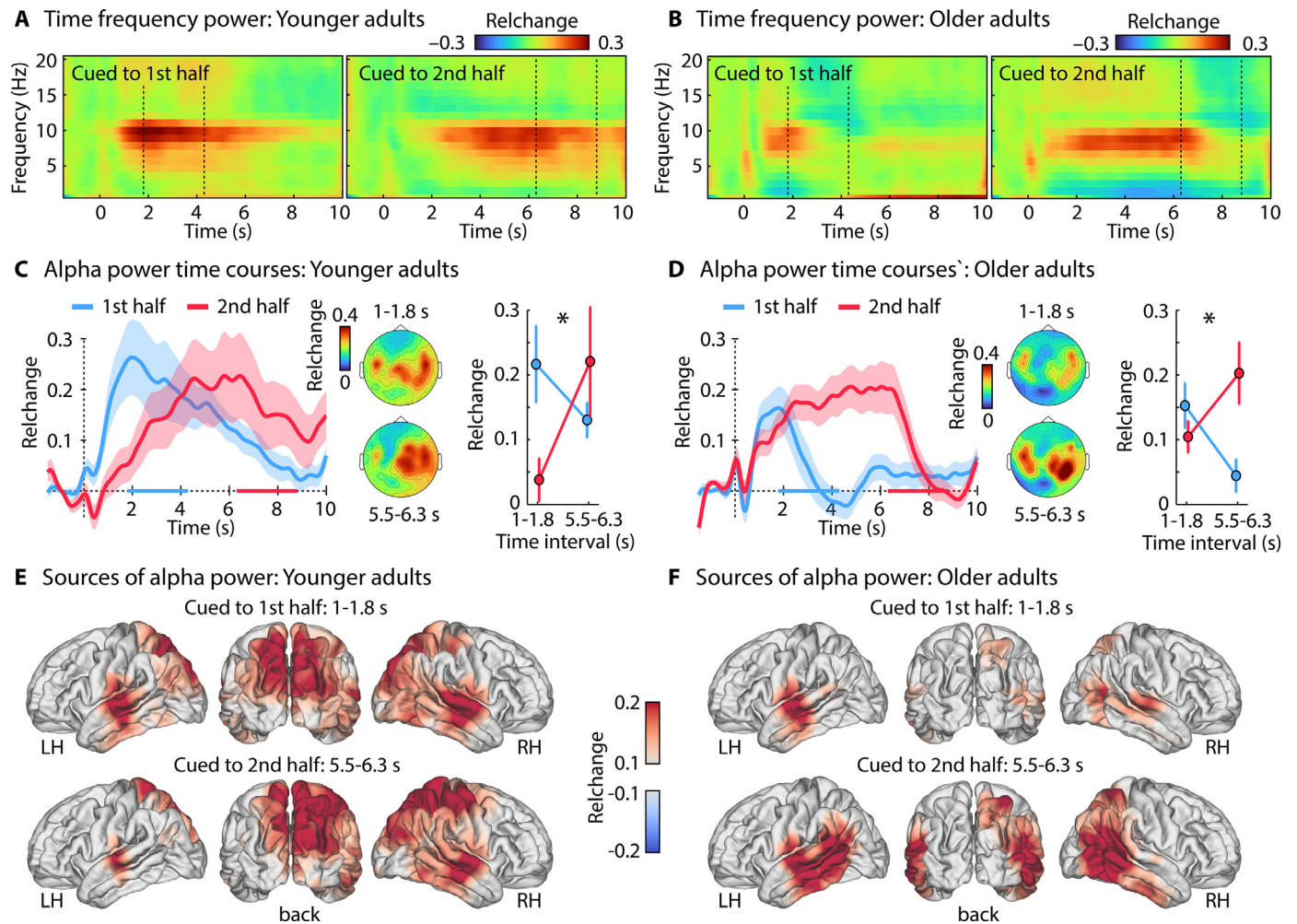


Fig. 6. Effect of age group on listening-related alpha power. **A:** Time-frequency power (averaged across channels; dashed lines mark the 2.5-s gap window). **B:** Alpha-power (8–10 Hz) time courses for both cue conditions (first half; second half). Colored lines on the x-axis mark the 2.5-s gap window. Topographies and averaged alpha power are shown for the 0.8-s time interval prior to the 2.5 s during which a gap could occur (first interval: 1–1.8 s; second interval: 5.5–6.3 s). The interaction was significant in younger adults and middle-aged and older adults. **C:** Source localization of alpha power for both time intervals and age groups. Error bars and shadings reflect the standard error of the mean. The label “older” refers to the full group of middle-aged and older adults. * $p \leq 0.05$.

gesting age-group differences in cognitive control processes (discussed in detail below).

8.2. Younger adults, and middle-aged and older adults, show attention-related alpha power modulations

MEG data were first analyzed in sensor space to examine whether MEG alpha power is sensitive to when participants attend (Fig. 6A and D). As for Experiments 1 and 2, the Time Interval \times Cue interaction ($F_{1,50} = 14.994$, $p = 3.14 \times 10^{-4}$, $\eta_p^2 = 0.231$) showed that alpha power was larger in the first interval (1–1.8 s) compared to the second interval (5.5–6.3 s) when participants were cued to the first half ($F_{1,51} = 10.646$, $p = 0.002$, $\eta_p^2 = 0.173$), whereas alpha power was larger in the second compared to the first interval when participants were cued to the second half ($F_{1,51} = 12.604$, $p = 8.4 \times 10^{-4}$, $\eta_p^2 = 0.198$; Fig. 6C and D). This interaction indicates that alpha power was sensitive to whether participants attended to the first versus second half of the sound.

We also observed a Cue \times Age Group interaction ($F_{1,50} = 5.240$, $p = 0.026$, $\eta_p^2 = 0.095$): Averaged across the two analysis time intervals (first and second interval), alpha power was numerically larger for younger ($p = 0.16$) but smaller for middle-aged and older adults ($p = 0.085$) when they were cued to the first compared to the second

half of the sound (Fig. 6C and D, right). None of the other effects were significant.

8.3. Age-differences in spatial distribution of alpha activity

Analyses described in the previous section were based on activity at MEG sensors, but this potentially reflects the summed activity from distinct sources (Hämäläinen et al., 1993; Hämäläinen et al., 2002). To gain spatial specificity, we calculated source localizations of alpha power. For younger adults, alpha power was strongest in superior temporal cortex and superior parietal cortex (Fig. 6E). For middle-aged and older adults, alpha activity was strongest in superior and posterior temporal cortex, but appeared weaker in superior parietal cortex (Fig. 6F; see also Figure S2).

The analysis of age-group differences in the spatial configuration of alpha power revealed that peak alpha power was consistently more ventro-lateral in middle-aged and older compared to younger adults (Fig. 7A; x-axis of left hemisphere: $t_{49} = 2.833$, $p = 0.007$, $d = 0.794$; x-axis of right hemisphere: $t_{49} = 1.880$, $p = 0.066$, $d = 0.527$; z-axis of left hemisphere: $t_{49} = 3.367$, $p = 0.002$, $d = 0.943$; z-axis of right hemisphere: $t_{49} = 2.420$, $p = 0.019$, $d = 0.678$).

Correlations of activation maps among participants further highlight age-group differences in the spatial configuration of brain acti-

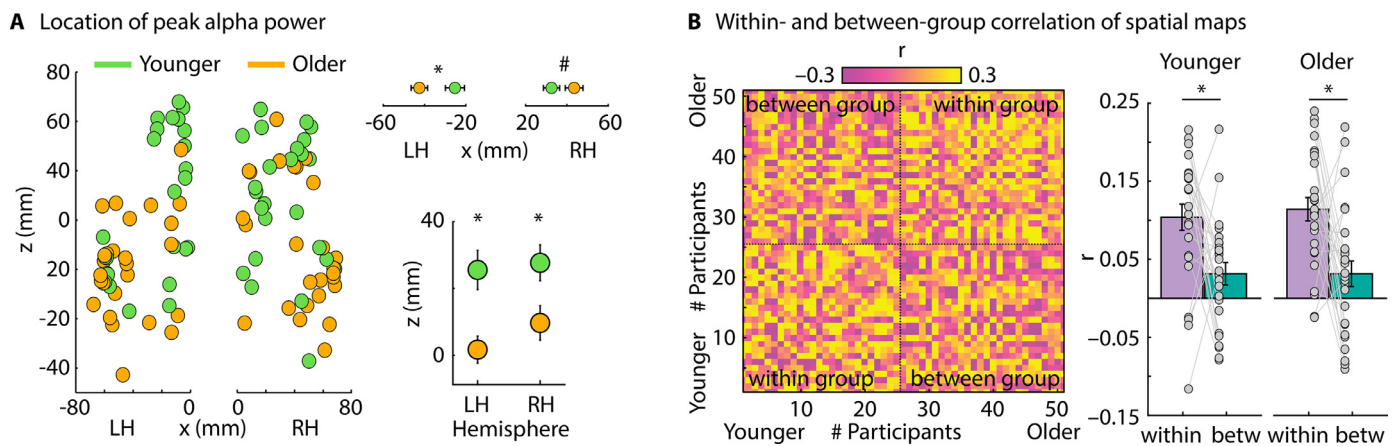


Fig. 7. Age-group differences in spatial configuration underlying alpha power. **A:** Spatial coordinates of alpha power activation peaks for the left (LH) and right hemisphere (RH). Data on the right reflect the mean location on the x-axis (left-right) and z-axis (ventral-dorsal). Activation maxima were more ventro-lateral in middle-aged and older compared to younger adults. **B:** Pair-wise correlation of spatial maps of alpha power among all participants. Correlations were higher among participants from the same age group (within) than with members from the other age group (between), for both younger, and middle-aged and older, adults. Error bars reflect the standard error of the mean. The label “older” refers to the full group of middle-aged and older adults. * $p \leq 0.05$, # ≤ 0.1 .

inations: Correlations of spatial alpha-power maps were larger among members of the same age group (within) compared to members of the other age group (between; Fig. 7B; younger adults: $t_{24} = 2.812$, $p = 0.01$, $d = 0.562$; middle-aged and older adults: $t_{25} = 3.243$, $p = 0.003$, $d = 0.636$). These results suggest that the source configuration underlying listening-related alpha activity differs between younger adults, and middle-aged and older adults.

In Experiment S1 (see Supplementary Materials), we further show that alpha activity during active listening (i.e., when there is a task) originates from spatially distinct brain regions compared to the traditional resting-state alpha activity originating from occipital cortex (Figure S4). This suggests that there are multiple alpha oscillators in the brain (cf., Başar et al., 1997; Klimesch, 1999; Bollimunta et al., 2008; van Dijk et al., 2008; Wöstmann et al., 2020). In contrast to alpha activity during active listening, the sources underlying resting-state alpha activity do not differ between younger adults, and middle-aged and older adults (Supplementary Materials), suggesting age-group specific changes in the listening-related alpha oscillator.

8.4. Attentional modulation of alpha power in superior parietal cortex is reduced in middle-aged and older adults

To investigate the sensitivity of brain regions to attention regulation in time, alpha-power time courses were analyzed for the superior temporal and superior parietal cortical regions (Fig. 8; see also Figure S3).

For younger people, alpha-power differences between cue conditions (first half; second half) were strongest in superior parietal cortex, whereas no difference was observed for superior temporal cortex (Fig. 8). For middle-aged and older people, differences between cue conditions were present in both the superior temporal and the superior parietal regions (Fig. 8), consistent with the different source configurations in middle-aged and older adults (Fig. 6E and F).

To statistically quantify age-group differences in attentional modulation of alpha activity, we conducted an rmANOVA with factors Cue (first half; second half), Time Interval (first interval: 1–1.8 s; second interval: 5.5–6.3 s), Region (STC; SPC), and Age Group (younger; middle-aged and older). The Cue \times Time Interval \times Region \times Age Group interaction was significant ($F_{1,49} = 16.935$, $p = 1.48 \times 10^{-4}$, $n_p^2 = 0.257$; Fig. 9A and B). In younger adults, the Cue \times Time Interval interaction was significant only for SPC, but not for STC (Cue \times Time Interval \times Region: $F_{1,24} = 18.029$, $p = 2.83 \times 10^{-4}$, $n_p^2 = 0.429$), showing that alpha power in SPC, but not in STC, decreased from the 1–1.8 s (first interval) to 5.5–6.3 s (second interval) when participants were cued to the first half of the

sound, and increased from the 1–1.8 s to 5.5–6.3 s intervals when participants were cued to second half of the sound. In middle-aged and older adults, the Cue \times Time Interval interaction ($F_{1,25} = 9.885$, $p = 0.004$, $n_p^2 = 0.283$) was not further specified by brain region (Cue \times Time Interval \times Region: $F_{1,25} = 2.466$, $p = 0.129$, $n_p^2 = 0.09$).

To examine the Cue \times Time Interval \times Region \times Age Group interaction in a different way, we also calculated an attentional modulation index (AMI) as the sum of the difference between time intervals (i.e., difference between first and second interval for cued to first half, plus the difference between second and first interval for cued to second half), separately for each participant and region. The attentional modulation was larger in SPC for younger than middle-aged and older adults ($t_{49} = 2.094$, $p = 0.041$, $d = 0.587$), whereas there was no difference between age groups for STC ($t_{49} = -0.829$, $p = 0.411$, $d = 0.232$; Region \times Age-Group interaction: $F_{1,49} = 16.935$, $p = 1.48 \times 10^{-4}$, $n_p^2 = 0.257$; Fig. 9C).

In sum, the source localization data indicate age-group differences in the brain regions underlying listening-related alpha activity. Alpha power and alpha-power modulations by attention were largest in superior parietal cortex in younger adults, whereas these effects were reduced in middle-aged and older adults. In contrast, middle-aged and older adults exhibit an activation maximum located more ventro-laterally in the brain, covering posterior temporal cortex. Below, we discuss how this age-group difference in the brain regions underlying attention regulation may be the result of more proactive (younger) vs reactive (middle-aged and older) cognitive control strategies during challenging listening.

8.5. General discussion

In the current study, we investigated the neural processes involved when individuals listen attentively at specific points in time and the extent to which these processes differ between younger adults, and middle-aged and older adults. We demonstrate that alpha power indicates when in time individuals listen attentively (Experiment 1) and that alpha power is modulated by listening difficulty, taken to reflect how much attention is deployed (Experiment 2). Our data show that middle-aged and older adults are able to regulate attention in time, but that younger adults recruit different brain regions than middle-aged and older adults during attentive listening. Younger adults show strongest attention-related modulation of alpha power in superior parietal cortex, whereas middle-aged and older adults show strongest modulations in posterior temporal cortex and reduced activity in superior parietal

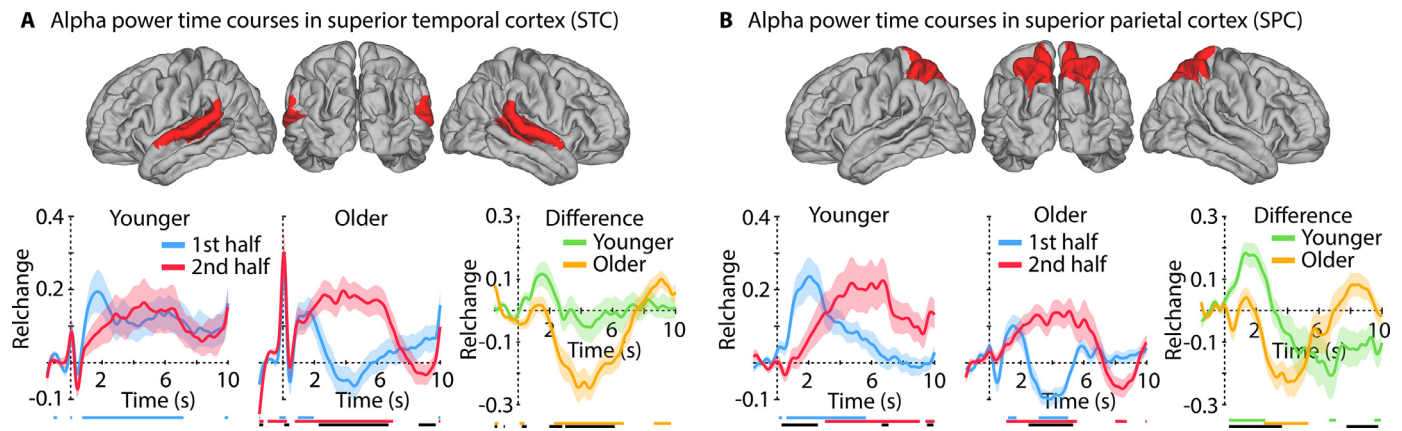


Fig. 8. Alpha-power time courses for two anatomically defined regions of interest. **A:** Superior temporal cortex region. Alpha power time courses for both cue conditions (first half; second half) for both age groups, and time courses for the difference between cue conditions. Colored lines at the bottom indicate a significant difference from zero for the related time course ($p \leq 0.05$, FDR-thresholded). The black line indicates a significant difference between time courses. Shadings around mean time courses reflect the standard error of the mean. **B:** Same as panel A for the superior parietal cortex region. The label “older” refers to the full group of middle-aged and older adults.

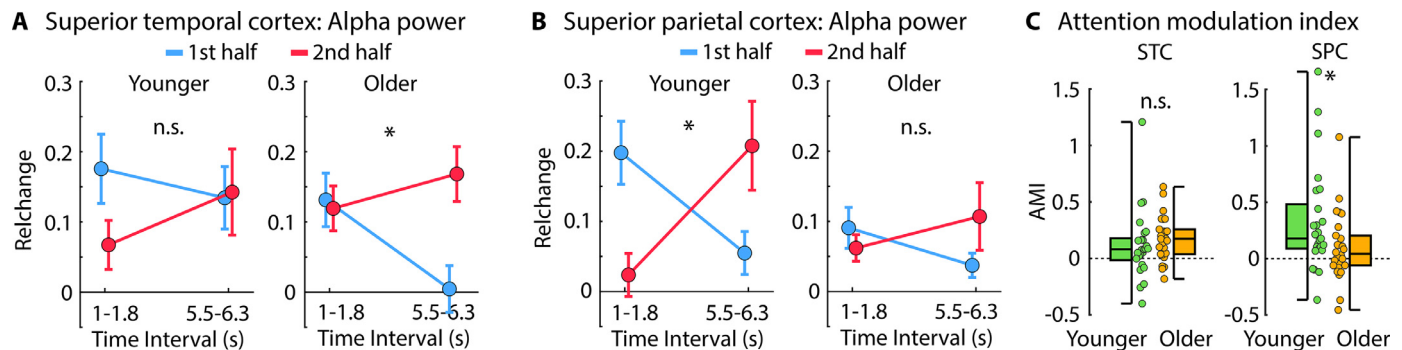


Fig. 9. Alpha power in the 0.8-s interval prior to the 2.5 s during which a gap could occur (first interval: 1–1.8 s; second interval: 5.5–6.3 s). The Cue \times Time Interval interaction was greater in the superior parietal cortex for younger compared to middle-aged and older adults, whereas age groups did not differ for the superior temporal cortex (Cue \times Time Interval \times Region \times Age Group interaction: $p = 1.48 \times 10^{-4}$; A and B). Panel C shows the interaction as an Attention Modulation Index (AMI). AMI was calculated as the difference between the first and the second interval when participants were cued to first half, plus the difference between the second and the first interval when participants were cued to second half. Larger values mean a stronger modulation of alpha power by the attentional cue. Error bars reflect the standard error of the mean. The label “older” refers to the full group of middle-aged and older adults. $*p \leq 0.05$; n.s. – not significant; STC – superior temporal cortex; SPC – superior parietal cortex.

cortex (Experiment 3). We suggest this dissociation in source location between younger, and middle-aged and older, groups may be the result of different cognitive control strategies employed to regulate attention in time during challenging listening.

8.6. Alpha power is sensitive to critical aspects of attention regulation during listening

We demonstrate that neural alpha power in superior parietal cortex reflects individuals’ directed attention to points in time when key information is expected to occur during challenging listening (Figs. 2, 4, 6, and 8). Our work is consistent with studies showing that alpha power aligns temporally with anticipated visual stimuli (Rohenkohl and Nobre, 2011; Bonnefond and Jensen, 2012; Payne et al., 2013). Previous work also suggests that alpha activity is sensitive to temporally dynamic auditory attention, where alpha power synchronizes with attended words presented during dichotic speech listening (Wöstmann et al., 2016; Tune et al., 2018, 2021). We show that alpha power reflects expectations about when key auditory information will occur, thus indexing attention deployment.

Alpha power has been shown to increase when individuals listen attentively to auditory stimuli relative to a baseline, passive listening, or visual stimulation (Adrian, 1944; Foxe et al., 1998;

Wöstmann et al., 2015, 2016; Dimitrijevic et al., 2017; Henry et al., 2017; Wöstmann et al., 2019; Fiedler et al., 2021). Alpha power also increases in the hemisphere that is ipsilateral (relative to contralateral) to the side to which a listener attends (Banerjee et al., 2011; Tune et al., 2018; Dahl et al., 2019; Deng et al., 2020; Tune et al., 2021). Our data demonstrate that alpha power also indicates the degree to which a listener deploys attention based on expected listening difficulty (Fig. 4). Alpha power was greater when participants expected gap detection to be difficult compared to easy, although this was only observed when participants expected the gap to occur within ~ 4 s after sound onset. Estimating the precise timing of temporally more distant events is more difficult (Gibbon, 1977; Wearden, 2003; Buhusi and Meck, 2005; Grondin, 2014). Along these lines, we observed lower overall performance (Figs. 1 and 5) and a smaller hazard-rate effect (Fig. 1) when participants attended to the second compared to the first half of the sound. High levels of attention may thus have been needed for the detection of gaps in the second half of the sound, independent of whether gap detection was expected to be easy or difficult. This additional load may have led to the increase in alpha power for both difficulty conditions when participants attended to the second half of the sound (Fig. 4B and C). Our results are compatible with the idea that attention enables listeners to budget mental resources effectively, allocating enough resources moment to moment in order to achieve listening goals.

8.7. Differences in behavior between age groups may reflect different cognitive control strategies

The hazard-rate effect for response times indicates that both age groups oriented attention in time (Fig. 5; Nobre et al., 2007; Nobre and van Ede, 2018). Some previous studies have suggested older adults may not use information to orient attention in time as well as younger adults do (Vallesi et al., 2009; Zanto et al., 2011; Heideman et al., 2018), whereas this was not observed in other studies (Chauvin et al., 2016; Droit-Volet et al., 2019). Interpretation of these results is difficult, however, because older adults often responded overall more slowly than younger adults. Here, overall response times were similar between age groups. The comparable hazard-rate effect in both age groups suggests that middle-aged and older adults are well able to orient attention in time during listening. Gap-detection performance, in contrast, differed between age-groups. Younger individuals detected more gaps when they occurred later, compared to earlier, within each cued sound half, whereas middle-aged and older individuals detected fewer (although for middle-aged and older adults the decline was not significant; Fig. 5).

The cognitive-control literature distinguishes between ‘proactive’ and ‘reactive’ control (Braver et al., 2007; Braver, 2012). Proactive cognitive control is anticipatory and refers to the active and sustained maintenance of goals and related information to facilitate task performance. In contrast, reactive cognitive control is not anticipatory: goals and contextual information are only transiently activated and decay faster (Braver et al., 2007). Behavioral performance in tasks requiring attentional orienting will thus depend on the cognitive control strategy employed (Braver et al., 2007). Critically, proactive control may be impaired in older adults, whereas reactive control has been suggested to remain intact in older adulthood (Braver et al., 2007; Braver, 2012). In the current listening task, decreasing hit rates for later gaps within a cued sound half for middle-aged and older adults may indicate a decay in maintenance of goal and context information reflective of more reactive strategy.

Our data provide other indications that temporal information is somewhat less anticipatorily utilized by middle-aged and older adults. Whereas response times depended on when a gap occurred in the first compared to the second half of the sound in younger adults (Figs. 1B and 5B), this difference was clearly absent in middle-aged and older adults (Fig. 5B). In fact, the influence of gap time on response times was very similar for younger adults cued to the second sound half and those for middle-aged and older adults cued to either sound half (Fig. 5B, the decrease in response times with gap time for middle-aged and older adults’ was also smaller compared to the response-time decrease for younger adults cued to the first half; for all $p < 0.05$, one-sided). This may suggest that middle-aged and older adults, while orienting attention in time, may have done so less effectively. We speculate that the pattern of hit rates and response times is consistent with middle-aged and older adults employing a mixture of proactive and reactive cognitive control strategies, compared to younger adults, who relied more on a proactive strategy.

8.8. Middle-aged and older adults recruit different brain regions for attention regulation than younger adults

Consistent with previous reports, we show an age-related reduction of alpha activity in superior parietal cortex (Figure S2; Sander et al., 2012; Vaden et al., 2012; Deiber et al., 2013; Hong et al., 2015; Wöstmann et al., 2015; Henry et al., 2017; Leenders et al., 2018; Rogers et al., 2018; Getzmann et al., 2020), suggesting that parietal cortex is less involved in challenging attention tasks in middle-aged and older adults. Participants in our group of middle-aged and older adults (~63 years) had a median age 4–12 years younger than in some previous studies (Sander et al., 2012; Vaden et al., 2012; Henry et al., 2017; Rogers et al., 2018), suggesting that a reduction in parietal alpha power may begin to emerge in people in their 60 s or younger (Deiber et al.,

2013; Hong et al., 2015; Getzmann et al., 2020 also demonstrate reduced parietal alpha power in this middle-aged and older adults group).

Alpha power reflected attentional orienting in time for both younger adults, and middle-aged and older adults (Figs. 6 and 8), but the recruited brain regions differed between age groups. Alpha activity in superior parietal cortex was modulated by attention in younger adults (Tuladhar et al., 2007; van Dijk et al., 2008; Tune et al., 2018), whereas middle-aged and older adults showed attention-related modulations in posterior temporal cortex (Figs. 6, 8, 9). Previous studies using visuo-spatial attention tasks have reported reduced attention-related lateralization of parietal alpha power for older compared to younger adults (Sander et al., 2012; Deiber et al., 2013; Hong et al., 2015; Mok et al., 2016; Heideman et al., 2018; Leenders et al., 2018; Getzmann et al., 2020). Source localization was not conducted in these previous studies, which may therefore have missed brain regions sensitive to attention regulation in older adults. Other research in the auditory domain shows the presence of alpha-power lateralization in a spatial-attention task in middle-aged to older adults, but comparisons with younger individuals were not conducted (Tune et al., 2018, 2021).

Proactive cognitive control is associated with sustained activity in prefrontal cortex (Braver et al., 2007; Braver, 2012). Prefrontal cortex, in turn, is thought to orchestrate other task-relevant regions by providing representation and maintenance of contextual information, such as the attention cue used here (Braver et al., 2007). Parietal cortex is crucial for performance of tasks with attentional load (Kanwisher and Wojciulik, 2000; Pessoa et al., 2003; Braver, 2012; Power and Petersen, 2013; Zanto and Gazzaley, 2017) and may, in younger adults, reflect the outcome of cognitive control processes in prefrontal cortex. Prefrontal activity was not observed directly here, perhaps because alpha oscillators are commonly associated with parietal and sensory cortices (Başar et al., 1997; van Dijk et al., 2008; Wöstmann et al., 2016), making our measures more sensitive to regions over which prefrontal cortex exhibits control than to prefrontal regions themselves. Reactive control can involve other brain regions, such as anterior cingulate or other more posterior cortices, including temporal cortex, to mediate performance in challenging tasks (Speer et al., 2003; Braver et al., 2007; Dew et al., 2011; Braver, 2012). Recruitment of different brain regions in middle-aged and older compared to younger adults in the current study could thus indicate more reliance on reactive control processes.

9. Conclusions

We investigated the neural processes involved when individuals listen attentively at specific points in time and asked whether these processes differ between younger adults, and middle-aged to older adults. Alpha power reflected *when in time* individuals listened attentively and *how much they attended* (induced by listening difficulty). Critically, our data show that middle-aged and older adults are able to regulate attention in time during listening, but that they appear to use different behavioral listening strategies and recruit different brain regions than do younger adults. Younger adults show attention-related modulations of alpha power in superior parietal cortex, whereas middle-aged and older adults show attention-related modulation in posterior temporal cortex. We suggest that the observed age-group differences in recruited neural circuits and behavior reflect different cognitive control strategies employed to regulate attention in time during challenging listening. The change in cognitive control in middle-aged and older individuals may reduce their ability to flexibly regulate attention in order to comprehend speech in the presence of background sound.

Declaration of Competing Interest

The authors have no conflict of interest.

Credit authorship contribution statement

Björn Herrmann: Conceptualization, Methodology, Software, Formal analysis, Investigation, Writing – original draft, Writing – review & editing, Funding acquisition. **Burkhard Maess:** Methodology, Software, Formal analysis, Writing – review & editing. **Molly J. Henry:** Conceptualization, Methodology, Writing – review & editing. **Jonas Obleser:** Conceptualization, Methodology, Writing – review & editing. **Ingrid S. Johnsrude:** Conceptualization, Writing – review & editing, Supervision, Funding acquisition.

Data availability

Data will be made available on request.

Acknowledgements

Research was supported by the Canadian Institutes of Health Research (MOP133450 to I.S. Johnsrude), the Natural Sciences and Engineering Research Council of Canada (RGPIN-2021-02602 to BH), and the German Research Foundation (Deutsche Forschungsgesellschaft; DFG; HE 7857/1-1 to BH/JO). BH was supported by a BrainsCAN Tier I postdoctoral fellowship (Canada First Research Excellence Fund; CFREF) and the Canada Research Chairs Program (232733). We thank the Max Planck Institute for Human Cognitive and Brain Sciences for the opportunity to record the MEG data and Yvonne Wolff-Rosier for help during data acquisition.

Supplementary materials

Supplementary material associated with this article can be found, in the online version, at doi:[10.1016/j.neuroimage.2023.119883](https://doi.org/10.1016/j.neuroimage.2023.119883).

References

- Adrian, E.D., 1944. Brain rhythms. *Nature* 153, 360–362.
- Banerjee, S., Snyder, A.C., Molholm, S., Foxe, J.J., 2011. Oscillatory alpha-band mechanisms and the deployment of spatial attention to anticipated auditory and visual target locations: supramodal or sensory-specific control mechanisms? *J. Neurosci.* 31, 9923–9932.
- Başar, E., Schürmann, M., Başar-Eroglu, C., Karakaş, S., 1997. Alpha oscillations in brain functioning: an integrative theory. *Int. J. Psychophysiol.* 26, 5–29.
- Bell, A.J., Sejnowski, T.J., 1995. An information maximization approach to blind separation and blind deconvolution. *Neural Comput.* 7, 1129–1159.
- Berger, H., 1929. Über das Elektrenkephalogramm des Menschen. *Eur. Arch. Psychiatry Clin. Neurosci.* 87, 527–570.
- Besl, P.J., McKay, N.D., 1992. A method for registration of 3-D shapes. *IEEE Trans. Pattern Anal. Mach. Intell.* 14, 239–256.
- Billig, A.J., Herrmann, B., Rhone, A.E., Gander, P.E., Nourski, K.V., Snoad, B.F., Kovach, C.K., Kawasaki, H., Howard III, M.A., IS, J., 2019. A sound-sensitive source of alpha oscillations in human non-primary auditory cortex. *J. Neurosci.* 39, 8679–8689.
- Bollimunta, A., Cheng, Y., Schroeder, C.E., Ding, M., 2008. Neuronal mechanisms of cortical alpha oscillations in awake-behaving macaques. *J. Neurosci.* 28, 9976–9988.
- Bonaccini, L.M., Dai, L., Shinn-Cunningham, B.G., 2019. Weak neural signatures of spatial selective auditory attention in hearing-impaired listeners. *J. Acoust. Soc. Am.* 146, 2577–2589.
- Bonnefond, M., Jensen, O., 2012. Alpha oscillations serve to protect working memory maintenance against anticipated distracters. *Curr. Biol.* 22, 1969–1974.
- Braver, T.S., 2012. The variable nature of cognitive control: a dual mechanisms framework. *Trends Cogn. Sci. (Regul. Ed.)* 16, 106–113.
- Braver, T.S., Barch, D.M., 2002. A theory of cognitive control, aging cognition, and neuromodulation. *Neurosci. Biobehav. Rev.* 26, 809–817.
- Braver, T.S., Gray, J.R., Burgess, G.C., 2007. Explaining the many varieties of working memory variation: dual mechanisms of cognitive control. In: *Proceedings of the Variation in Working Memory*, New York, NY, US. Oxford University Press, pp. 76–106.
- Conway A, Jarrold C, Kane M, Miyake A, Towse J, eds.
- Brehm, J.W., Self, E.A., 1989. The intensity of motivation. *Annu. Rev. Psychol.* 40, 109–131.
- Buhusi, C.V., Meck, W.H., 2005. What makes us tick? Functional and neural mechanisms of interval timing. *Nat. Rev. Neurosci.* 6, 755–765.
- Capilla, A., Schoffelen, J.M., Paterson, G., Thut, G., Gross, J., 2014. Dissociated α -band modulations in the dorsal and ventral visual pathways in visuospatial attention and perception. *Cereb. Cortex* 24, 550–561.
- Chauvin, J.J., Gillebert, C.R., Rohenkohl, G., Humphreys, G.W., Nobre, A.C., 2016. Temporal orienting of attention can be preserved in normal aging. *Psychol. Aging* 31, 442–455.
- Dahl, M.J., Ilg, L., Li, S.C., Passow, S., Werkle-Bergner, M., 2019. Diminished pre-stimulus alpha-lateralization suggests compromised self-initiated attentional control of auditory processing in old age. *Neuroimage* 197, 414–424.
- Deiber, M.P., Ibañez, V., Missonnier, P., Rodríguez, C., Giannakopoulos, P., 2013. Age-associated modulations of cerebral oscillatory patterns related to attention control. *Neuroimage* 82, 531–546.
- Deng, Y., Choi, I., Shinn-Cunningham, B., 2020. Topographic specificity of alpha power during auditory spatial attention. *Neuroimage* 207, 116360.
- Dew, I.T.Z., Buchler, N., Dobbins, I.G., Cabeza, R., 2011. Where is ELSA? The early to late shift in aging. *Cereb. Cortex* 22, 2542–2553.
- Dimitrijevic, A., Smith, M.L., Kadis, D.S., Moore, D.R., 2017. Cortical alpha oscillations predict speech intelligibility. *Front. Hum. Neurosci.* 11 Article 88.
- Droit-Volet, S., Lorandía, F., Coull, J.T., 2019. Explicit and implicit timing in aging. *Acta Psychol.* 193, 180–189 (Amst).
- Fiedler, L., Ala, T.S., Graversen, C., Alickovic, E., Lunner, T., Wendt, D., 2021. Hearing aid noise reduction lowers the sustained listening effort during continuous speech in noise—a combined pupillometry and EEG study. *Ear Hear.* 42, 1590–1601.
- Fischl, B., Sereno, M.I., Dale, A.M., 1999a. Cortical surface-based analysis II: inflation, flattening, and a surface-based coordinate system. *Neuroimage* 9, 195–207.
- Fischl, B., Sereno, M.I., Tootell, R.B.H., Dale, A.M., 1999b. High-resolution intersubject averaging and a coordinate system for the cortical surface. *Hum. Brain Mapp.* 8, 272–284.
- Fitzgibbons, P.J., Gordon-Salant, S., 2010. Behavioral studies with aging humans: hearing sensitivity and psychoacoustics. In: *Proceedings of the Aging Auditory System*, New York, USA. Springer-Verlag, pp. 111–134.
- Foxe, J.J., Simpson, G.V., Ahlfors, S.P., 1998. Parieto-occipital \sim 10Hz activity reflects anticipatory state of visual attention mechanisms. *Neuroreport* 9, 3929–3933.
- Fu, K.M.G., Foxe, J.J., Murray, M.M., Higgins, B.A., Javitt, D.C., Schroeder, C.E., 2001. Attention-dependent suppression of distracter visual input can be cross-modally cued as indexed by anticipatory parieto-occipital alpha-band oscillations. *Cogn. Brain Res.* 12, 145–152.
- Garcés, P., López-Sanz, D., Maestú, F., Pereda, E., 2017. Choice of magnetometers and gradiometers after signal space separation. *Sensors* 17, 2926.
- Gatehouse, S., Noble, W., 2004. The speech, spatial and qualities of hearing scale (SSQ). *Int. J. Audiol.* 43, 85–99.
- Getzmann, S., Klatt, L.I., Schneider, D., Begau, A., Wascher, E., 2020. EEG correlates of spatial shifts of attention in a dynamic multi-talker speech perception scenario in younger and older adults. *Hear. Res.* 398, 108077.
- Gibbon, J., 1977. Scalar expectancy theory and Weber's law in animal timing. *Psychol. Rev.* 84, 279–325.
- Glasser, M.F., Coalson, T.S., Robinson, E.C., Hacker, C.D., Harwell, J., Yacoub, E., Ugurbil, K., Andersson, J., Beckmann, C.F., Jenkinson, M., Smith, S.M., Van Essen, D.C., 2016. A multi-modal parcellation of human cerebral cortex. *Nature* 536, 171–178.
- Grondin, S., 2014. About the (non)scalar property for time perception. *Adv. Exp. Med. Biol.* 829, 17–32.
- Gross, J., Kujala, J., Hämäläinen, M.S., Timmermann, L., Schnitzler, A., Salmelin, R., 2001. Dynamic imaging of coherent sources: studying neural interactions in the human brain. *Proc. Natl Acad. Sci.* 98, 694–699.
- Hämäläinen, M.S., Hari, R., 2002. Magnetoencephalographic (MEG) characterization of dynamic brain activation: basic principles and methods of data collection and source analysis. In: *Proceedings of the Brain Mapping: The Methods*. Academic Press, pp. 227–253.
- Hämäläinen, M.S., Hari, R., Ilmoniemi, R.J., Knuutila, J., Lounasmaa, O.V., 1993. Magnetoencephalography – theory, instrumentation, and applications to noninvasive studies of the working human brain. *Rev. Mod. Phys.* 65, 413–497.
- Han, X., Jovicich, J., Salat, D.H., van der Kouwe, A., Quinn, B., Czanner, S., Busa, E., Pacheco, J., Albert, M., Killiany, R., Maguire, P., Rosas, D., Makris, N., Dale, A.M., Dickerson, B., Fischl, B.R., 2006. Reliability of MRI-derived measurements of human cerebral cortical thickness: the effects of field strength, scanner upgrade and manufacturer. *Neuroimage* 32, 180–194.
- Hari, R., Puce, A., 2017. *MEG-EEG Primer*. Oxford University Press.
- Heideman, S.G., Rohenkohl, G., Chauvin, J.J., Palmer, C.E., van Ede, F., Nobre, A.C., 2018. Anticipatory neural dynamics of spatial-temporal orienting of attention in younger and older adults. *Neuroimage* 178, 46–56.
- Henry, M.J., Obleser, J., 2012. Frequency modulation entrains slow neural oscillations and optimizes human listening behavior. *Proc. Natl Acad. Sci.* 109, 20095–20100.
- Henry, M.J., Herrmann, B., Obleser, J., 2014. Entrained neural oscillations in multiple frequency bands co-modulate behavior. *Proc. Natl Acad. Sci.* 111, 14935–14940.
- Henry, M.J., Herrmann, B., Obleser, J., 2016. Neural microstates govern perception of auditory input without rhythmic structure. *J. Neurosci.* 36, 860–871.
- Henry, M.J., Herrmann, B., Kunke, D., Obleser, J., 2017. Aging affects the balance of neural entrainment and top-down neural modulation in the listening brain. *Nat. Commun.* 8, 15801.
- Herrmann, B., Johnsrude, I.S., 2018. Attentional state modulates the effect of an irrelevant stimulus dimension on perception. *J. Exp. Psychol. Hum. Percept. Perform.* 44, 89–105.
- Herrmann, B., Johnsrude, I.S., 2020. A Model of Listening Engagement (MoLE). *Hearing Research*.
- Herrmann, B., Maess, B., Johnsrude, I.S., 2018. Aging affects adaptation to sound-level statistics in human auditory cortex. *J. Neurosci.* 38, 1989–1999.
- Herrmann B, Maess B, Johnsrude IS (2023) Age-related changes in neural synchronization and the sustained response to amplitude and frequency modulation of sound. *Hearing Research* 428:108677.
- Herrmann, B., Maess, B., Johnsrude, I.S., 2022. A neural signature of regularity in sound is reduced in older adults. *Neurobiol. Aging* 109, 1–10.

- Hessler, J.B., Schäufele, M., Hendlmeier, I., Nora Junge, M., Leonhardt, S., Weber, J., Bickel, H., 2017. The 6-item cognitive impairment test as a bedside screening for dementia in general hospital patients: results of the general hospital study (GHoST). *Int. J. Geriatr. Psychiatry* 32, 726–733.
- Hong, X., Sun, J., Bengson, J.J., Mangun, G.R., Tong, S., 2015. Normal aging selectively diminishes alpha lateralization in visual spatial attention. *Neuroimage* 106, 353–363.
- Hornsby, B.W., Naylor, G., Bess, F.H., 2016. A taxonomy of fatigue concepts and their relation to hearing loss. *Ear Hear.* 37, 136S–144S.
- Humes, L.E., Bussey, T.A., Craig, J.C., Kewley-Port, D., 2009. The effects of age on sensory thresholds and temporal gap detection in hearing, vision, and touch. *Atten. Percept. Psychophys.* 71, 860–871.
- Jensen, O., Mazaheri, A., 2010. Shaping functional architecture by oscillatory alpha activity: gating by inhibition. *Front. Hum. Neurosci.* 4 Article 186.
- Johnsrude, I.S., Rodd, J.M., 2016. Factors that increase processing demands when listening to speech. In: *Proceedings of the Neurobiology of Language*. Elsevier Academic Press, pp. 491–502 Hickok G, Small SL, eds.
- Kanwisher, N., Wojciulik, E., 2000. Visual attention: insights from brain imaging. *Nat. Rev. Neurosci.* 1, 91–100.
- Klimesch, W., 1999. EEG alpha and theta oscillations reflect cognitive and memory performance: a review and analysis. *Brain Res. Rev.* 29, 169–195.
- Klimesch, W., Sauseng, P., Hanslmayr, S., 2007. EEG alpha oscillations: the inhibition–timing hypothesis. *Brain Res. Rev.* 53, 63–88.
- Leenders, M.P., Lozano-Soldevilla, D., Roberts, M.J., Jensen, O., De Weerd, P., 2018. Diminished alpha lateralization during working memory but not during attentional cueing in older adults. *Cereb. Cortex* 28, 21–32.
- Lehtelä, L., Salmelin, R., Hari, R., 1997. Evidence for reactive magnetic 10-Hz rhythm in the human auditory cortex. *Neurosci. Lett.* 222, 111–114.
- Makeig, S., Bell, A.J., Jung, T.P., Sejnowski, T.J., 1996. Independent component analysis of electroencephalographic data. In: *Proceedings of the Advances in Neural Information Processing Systems*. Cambridge, MA, USA. MIT Press Touretzky D, Mozer M, Hasselmo M, eds.
- Mattys, S.L., Davis, M.H., Bradlow, A.R., Scott, S.K., 2012. Speech recognition in adverse conditions: a review. *Lang. Cogn. Process* 27, 953–978.
- Mok, R.M., Myers, N.E., Wallis, G., Nobre, A.C., 2016. Behavioral and neural markers of flexible attention over working memory in aging. *Cereb. Cortex* 26, 1831–1842.
- Müller, N., Leske, S., Hartmann, T., Szébenyi, S., Weisz, N., 2015. Listen to yourself: the medial prefrontal cortex modulates auditory alpha power during speech preparation. *Cereb. Cortex* 25, 4029–4037.
- Niedermeyer, E., 1990. Alpha-like rhythmical activity of the temporal lobe. *Clin. Electroencephalogr.* 21, 210–224.
- Niemi, P., Näätänen, R., 1981. Foreperiod and simple reaction time. *Psychol. Bull.* 89, 133–162.
- Nobre, A.C., van Ede, F., 2018. Anticipated moments: temporal structure in attention. *Nat. Rev. Neurosci.* 19, 34–48.
- Nobre, A.C., Correa, A., Coull, J.T., 2007. The hazards of time. *Curr. Opin. Neurobiol.* 17, 465–470.
- Nolte, G., 2003. The magnetic lead field theorem in the quasi-static approximation and its use for magnetoencephalography forward calculation in realistic volume conductors. *Phys. Med. Biol.* 48, 3637–3652.
- Obleser, J., Wöstmann, M., Hellbernd, N., Wilsch, A., Maess, B., 2012. Adverse listening conditions and memory load drive a common alpha oscillatory network. *J. Neurosci.* 32, 12376–12383.
- Oostenveld, R., Fries, P., Maris, E., Schoffelen, J.M., 2011. FieldTrip: open source software for advanced analysis of MEG, EEG, and invasive electrophysiological data. *Comput. Intell. Neurosci.* 2011:Article ID 156869.
- Palva, S., Palva, J.M., 2011. Functional roles of alpha-band phase synchronization in local and large-scale cortical networks. *Front. Psychol.* 2 Article 204.
- Payne, L., Guillory, S., Sekuler, R., 2013. Attention-modulated alpha-band oscillations protect against intrusion of irrelevant information. *J. Cogn. Neurosci.* 25, 1463–1476.
- Peelle, J.E., 2018. Listening effort: how the cognitive consequences of acoustic challenge are reflected in brain and behavior. *Ear Hear.* 39, 204–214.
- Pessoa, L., Kastner, S., Ungerleider, L.G., 2003. Neuroimaging studies of attention: from modulation of sensory processing to top-down control. *J. Neurosci.* 23, 3990–3998.
- Pichora-Fuller, M.K., 2003. Processing speed and timing in aging adults: psychoacoustics, speech perception, and comprehension. *Int. J. Audiol.* 42, S59–S67.
- Pichora-Fuller, M.K., 2016. How social psychological factors may modulate auditory and cognitive functioning during listening. *Ear Hear.* 37 (Suppl 1), 92S–100S.
- Pichora-Fuller, M.K., Kramer, S.E., Eckert, M.A., Edwards, B., Hornsby, B.W.Y., Humes, L.E., Lemke, U., Lunner, T., Matthen, M., Mackersie, C.L., Naylor, G., Phillips, N.A., Richter, M., Rudner, M., Sommers, M.S., Tremblay, K.L., Wingfield, A., 2016. Hearing impairment and cognitive energy: the framework for understanding effortful listening (FUEL). *Ear Hear.* 37 (Suppl 1), 5S–27S.
- Power, J.D., Petersen, S.E., 2013. Control-related systems in the human brain. *Curr. Opin. Neurobiol.* 23, 223–228.
- Richter, M., Gendolla, G.H.E., Wright, R.A., 2016. Three decades of research on motivational intensity theory: what we have learned about effort and what we still don't know. In: *Proceedings of the Advances in Motivation Science*, Cambridge, MA, USA. Academic Press, pp. 149–186 Elliot AJ, ed.
- Rogers, C.S., Payne, L., Maharjan, S., Wingfield, A., Sekuler, R., 2018. Older adults show impaired modulation of attentional alpha oscillations: evidence from dichotic listening. *Psychol. Aging* 33, 246–258.
- Rohenkohl, G., Nobre, A.C., 2011. Alpha oscillations related to anticipatory attention follow temporal expectations. *J. Neurosci.* 31, 14076–14084.
- Sander, M.C., Werkle-Bergner, M., Lindenberger, U., 2012. Amplitude modulations and inter-trial phase stability of alpha-oscillations differentially reflect working memory constraints across the lifespan. *Neuroimage* 59, 646–654.
- Shenhav, A., Musslick, S., Lieder, F., Kool, W., Griffiths, T.L., Cohen, J.D., Botvinick, M.M., 2017. Toward a rational and mechanistic account of mental effort. *Annu. Rev. Neurosci.* 40, 99–124.
- Snell, K.B., 1997. Age-related changes in temporal gap detection. *J. Acoust. Soc. Am.* 101, 2214–2220.
- Speer, N.K., Jacoby, L.L., Braver, T.S., 2003. Strategy-dependent changes in memory: effects on behavior and brain activity. *Cogn. Affect. Behav. Neurosci.* 3, 155–167.
- Strauss, D.J., Francis, A.L., 2017. Toward a taxonomic model of attention in effortful listening. *Cogn. Affect. Behav. Neurosci.* 17, 809–825.
- Strouse, A., Ashmead, D.H., Ohde, R.N., Grantham, D.W., 1998. Temporal processing in the aging auditory system. *J. Acoust. Soc. Am.* 104, 2385–2399.
- Taulu, S., Kajola, M., Simola, J., 2004. Suppression of interference and artifacts by the signal space separation method. *Brain Topogr.* 16, 269–275.
- Taulu, S., Simola, J., Kajola, M., 2005. Applications of the signal space separation method. *IEEE Trans. Signal Process.* 53, 3359–3372.
- Tiihonen, J., Hari, R., Kajola, M., Karhu, J., Ahlfors, S.P., Tassari, S., 1991. Magnetoencephalographic 10-Hz rhythm from the human auditory cortex. *Neurosci. Lett.* 129, 303–305.
- Tuladhar, A.M., Nt, H., Schoffelen, J.M., Maris, E., Oostenveld, R., Jensen, O., 2007. Parieto-occipital sources account for the increase in alpha activity with working memory load. *Hum. Brain Mapp.* 28, 785–792.
- Tune, S., Wöstmann, M., Obleser, J., 2018. Probing the limits of alpha power lateralisation as a neural marker of selective attention in middle-aged and older listeners. *Eur. J. Neurosci.* 48, 2537–2550.
- Tune, S., Alavash, M., Fiedler, L., Obleser, J., 2021. Neural attentional-filter mechanisms of listening success in middle-aged and older individuals. *Nat. Commun.* 12, 4533.
- Upadhyaya, A.K., Rajagopal, M., Gale, T.M., 2010. The six item cognitive impairment test (6-CIT) as a screening test for dementia: comparison with mini-mental state examination (MMSE). *Curr. Aging Sci.* 3, 138–142.
- Vaden, R.J., Hutcheson, N.L., McCollum, L.A., Kentros, J., Visscher, K.M., 2012. Older adults, unlike younger adults, do not modulate alpha power to suppress irrelevant information. *Neuroimage* 63, 1127–1133.
- Vallesi, A., McIntosh, A.R., Stuss, D.T., 2009. Temporal preparation in aging: a functional MRI study. *Neuropsychologia* 47, 2876–2881.
- van Dijk, H., Schoffelen, J.M., Oostenveld, R., Jensen, O., 2008. Prestimulus oscillatory activity in the alpha band predicts visual discrimination ability. *J. Neurosci.* 28, 1816–1823.
- Wearden, J.H., 2003. Applying the scalar timing model to human time psychology: progress and challenges. In: *Proceedings of the Time and mind II: Information Processing Perspectives*. Ashland, OH, US. Hogrefe & Huber Publishers, pp. 21–39.
- Westbrook, A., Braver, T.S., 2015. Cognitive effort: a neuroeconomic approach. *Cogn. Affect. Behav. Neurosci.* 15, 395–415.
- Wilsch, A., Henry, M.J., Herrmann, B., Maess, B., Obleser, J., 2015. Alpha oscillatory dynamics index temporal expectation benefits in working memory. *Cereb. Cortex* 25, 1938–1946.
- Wöstmann, M., Alavash, M., Obleser, J., 2019. Alpha oscillations in the human brain implement distractor suppression independent of target selection. *J. Neurosci.* 39, 9797–9805.
- Wöstmann, M., Schmitt, L.M., Obleser, J., 2020. Does closing the eyes enhance auditory attention? Eye closure increases attentional alpha-power modulation but not listening performance. *J. Cogn. Neurosci.* 32, 212–225.
- Wöstmann, M., Maess, B., Obleser, J., 2021. Orienting auditory attention in time: lateralized alpha power reflects spatio-temporal filtering. *Neuroimage* 228, 117711.
- Wöstmann, M., Herrmann, B., Wilsch, A., Obleser, J., 2015. Neural alpha dynamics in younger and older listeners reflect acoustic challenges and predictive benefits. *J. Neurosci.* 35, 1458–1467.
- Wöstmann, M., Herrmann, B., Maess, B., Obleser, J., 2016. Spatiotemporal dynamics of auditory attention synchronize with speech. *Proc. Natl Acad. Sci.* 113, 3873–3878.
- Zanto, T.P., Gazzaley, A., 2017. Cognitive control and the ageing brain. In: *Proceedings of the Wiley Handbook of Cognitive Control*. John Wiley & Sons, pp. 476–490 Egner T, ed.
- Zanto, T.P., Pan, P., Liu, H., Bollinger, J., Nobre, A.C., Gazzaley, A., 2011. Age-related changes in orienting attention in time. *J. Neurosci.* 31, 12461–12470.