

# Cholesterol Metabolism in Aging and Age-Related Disorders

Gesine Saher

Department of Neurogenetics, Max Planck Institute for Multidisciplinary Sciences, Göttingen, Germany; email: saher@mpinat.mpg.de

Annu. Rev. Neurosci. 2023. 46:59–78

The *Annual Review of Neuroscience* is online at [neuro.annualreviews.org](http://neuro.annualreviews.org)

<https://doi.org/10.1146/annurev-neuro-091922-034237>

Copyright © 2023 by the author(s). This work is licensed under a Creative Commons Attribution 4.0 International License, which permits unrestricted use, distribution, and reproduction in any medium, provided the original author and source are credited. See credit lines of images or other third-party material in this article for license information.

ANNUAL  
REVIEWS **CONNECT**

[www.annualreviews.org](http://www.annualreviews.org)

- Download figures
- Navigate cited references
- Keyword search
- Explore related articles
- Share via email or social media

## Keywords

aging, age-related neurological disease, Alzheimer's disease, cholesterol, microglia, neurons

## Abstract

All mammalian cell membranes contain cholesterol to maintain membrane integrity. The transport of this hydrophobic lipid is mediated by lipoproteins. Cholesterol is especially enriched in the brain, particularly in synaptic and myelin membranes. Aging involves changes in sterol metabolism in peripheral organs and also in the brain. Some of those alterations have the potential to promote or to counteract the development of neurodegenerative diseases during aging. Here, we summarize the current knowledge of general principles of sterol metabolism in humans and mice, the most widely used model organism in biomedical research. We discuss changes in sterol metabolism that occur in the aged brain and highlight recent developments in cell type-specific cholesterol metabolism in the fast-growing research field of aging and age-related diseases, focusing on Alzheimer's disease. We propose that cell type-specific cholesterol handling and the interplay between cell types critically influence age-related disease processes.

## Contents

INTRODUCTION .....	60
CHOLESTEROL METABOLISM DURING HEALTH .....	61
Cellular Cholesterol Homeostasis .....	61
Central Nervous System Versus Peripheral Cholesterol Metabolism .....	62
CHOLESTEROL METABOLISM DURING AGING AND IN	
AGE-RELATED NEUROLOGICAL DISEASES .....	66
Cholesterol Metabolism During Aging .....	66
Impaired Cholesterol Homeostasis in Age-Related Neurological Disease .....	67
CELLULAR CONTRIBUTIONS TO BRAIN AGING	
AND ALZHEIMER'S DISEASE .....	69
CONCLUDING REMARKS .....	71

## INTRODUCTION

The world population has steadily increased from approximately 2.5 billion in 1950 to more than three times that value today. In industrial countries, this increase is coupled to a shift in the age distribution of the population, with an increment of the median age by almost nine years and a prolonged life expectancy of almost 14 years (Roser et al. 2013). In the United States, the Census Bureau estimated a 1.5-fold rise in the population aged 65 years and older within the next 30 years (GBD 2016 Neurol. Collab. 2019). Despite improved medical care, the health span, which designates the period of life that is free of serious, life-threatening disease, has not increased to a similar degree as the life span. Consequently, the total burden of disease remains highest in people aged 70 years or older (Roser et al. 2021). Hence, in light of these demographic changes, the development of concepts for managing age-related diseases is of pivotal medical, socioeconomic, and financial importance.

Aging is a process characterized by gradual decline of physiological pathways leading to decreasing physical and mental abilities. The underlying causes relate to telomere shortening, chronic oxidative stress, accumulating genetic damage, and epigenetic modifications over time. The pathways that lead to cellular senescence involve metabolic defects, including mitochondrial dysfunction; impaired turnover processes such as autophagy, proteostasis, reduced protective, and regenerative capabilities; and ceasing efficacy of endogenous repair processes. Each of these factors contributes to cellular senescence and raises the risk of developing age-related diseases. Accelerated aging, characterized by declining biological processes at a rate that exceeds the chronological age, is generally associated with one or more illnesses. The opposite, a condition of slowed physiological decline with prolonged health span and improved quality of life, has been termed healthy aging. Multidisciplinary investigations of the elderly aim to understand the mechanisms of resilience against physiological and cognitive decline (Beker et al. 2020, Zeng et al. 2017).

The most common aging-associated diseases comprise cardiovascular disorders, cancer, skeletal disorders, and vision defects in addition to neurodegenerative disorders. These pathologies can influence each other by acting as a comorbidity or risk factor; for example, cardiovascular pathology can aggravate the expression of age-related neurodegenerative disorders (Song et al. 2021). Neurodegenerative disorders are recognized as a major cause of death and disability (GBD 2016 Neurol. Collab. 2019).

Advanced neurodegenerative pathology is associated with neuronal loss and brain atrophy and presents with progressive dysfunction. In contrast to peripheral organs such as the liver (Heinke

et al. 2022), the nervous system is most susceptible to these age-related illnesses because of the limited ability of cell renewal (Reu et al. 2017, Yeung et al. 2014). However, the initial mild cognitive decline of the aging brain is caused rather by loss of connectivity and plasticity (Bishop et al. 2010). The pathological correlates of this declining brain functionality are disturbances of synaptic transmission and myelinated fibers (Bishop et al. 2010). At present, there are no curative or preventive medications available for neurodegenerative disorders.

The major age-related neurodegenerative disorders comprise stroke, Parkinson's disease, and dementia. At least 44 million people worldwide are living with dementia, the most common form of which is Alzheimer's disease (AD), accounting for 60–80% of the cases. Especially in Japan, the prevalence of dementia has increased dramatically within the last few decades (Dodge et al. 2012, Ohara et al. 2017). Here, in addition to the extremely expanded percentage of aged people in the Japanese population (median age 22.3 years in 1950 compared to 48.2 years in 2020) (Roser et al. 2013) and the improved survival of dementia patients, this development has been linked to the transition of Japanese people to a Western lifestyle (Grant 2014). Western-type nutrition correlates with the risk of developing dyslipidemia, obesity, and vascular morbidities such as atherosclerosis that often involve dysregulated cholesterol metabolism.

The role of cholesterol metabolism in neurodegenerative disorders is the subject of a fast-growing field of biomedical research. In this review, we therefore discuss a selection of recent developments. We first introduce cellular cholesterol homeostasis and compare peripheral and central nervous system (CNS) cholesterol metabolism in health and disease. Finally, we address cellular contributions of cholesterol metabolism to the age-related neurodegenerative disease AD.

## CHOLESTEROL METABOLISM DURING HEALTH

### Cellular Cholesterol Homeostasis

Cholesterol is critically involved in the biophysical properties of mammalian membranes, including their stability, fluidity, tightness, and semipermeable nature. Each cellular membrane has its specific content of cholesterol; while plasma membranes contain the highest levels of this essential sterol, internal membranes such as the endoplasmic reticulum (ER) have a low cholesterol content (Ikonen & Zhou 2021). Cholesterol molecules are not uniformly distributed in cellular membranes but are enriched together with sphingolipids and gangliosides in certain membrane regions, termed membrane lipid rafts. Ranging from 10–200 nm in size, these microdomains harbor proteins that segregate to these specialized membrane stretches and serve as functional hubs for many physiological processes such as intracellular signaling. In addition to these classical membrane lipid rafts, membrane contact sites between mitochondrial and endoplasmic reticulum membranes (MAMs) show raft-like enrichment of lipid components, including cholesterol (Vance 2014). Whether other types of this diverse family of membrane contact sites, for example, between the ER and the plasma membrane, between endo/lysosomes and mitochondria, or between lipid droplets and mitochondria, also enrich cholesterol and share similar physical and biochemical properties is currently unknown. MAMs contain proteins involved in cholesterol metabolism such as sterol *O*-acyltransferase 1 (SOAT1) (Lak et al. 2021), which synthesizes the storage form of cholesterol, cholesterol esters. Membrane contact sites have been associated with essential roles in cellular physiology, including autophagy, signaling, calcium homeostasis, lipid synthesis, and lipid transport, enabling the dynamic nature of the lipid content of cellular membranes. In addition, not only nonvesicular but also vesicular intracellular transport processes have been linked to the maintenance of cholesterol homeostasis (Luo et al. 2019).

Cellular cholesterol levels are maintained by tightly regulating cholesterol synthesis, uptake, internal storage, and release. This complex regulatory system involves a number of sterol-sensing

proteins, transcriptional control by the sterol responsive element binding protein 2 (SREBP2) transcription factor, and posttranscriptional and posttranslational regulation and has been the topic of excellent recent reviews (Brown et al. 2018, Ikonen & Zhou 2021). Central to the transcriptional regulation of cholesterol synthesis is the sterol-sensing SREBP cleavage-activating protein (SCAP) located in the ER. When cellular cholesterol levels fall below a critical threshold, SCAP escorts premature SREBP2 to the Golgi for proteolytic processing and activation of its transcriptional activator function. Notably, although the mechanisms of cellular cholesterol homeostasis are well known, how the individual level of fasting blood cholesterol concentration is regulated remains enigmatic. Excess cellular cholesterol is either released from the cells or stored intracellularly as cholesterol esters in lipid droplets.

Cellular cholesterol handling is linked to lysosomal and autophagosomal catabolism pathways. Egress of cholesterol from lysosomal membranes is a prerequisite for final degradation of internalized material. Cholesterol exit from lysosomes is mediated by the Niemann-Pick C1 and C2 (NPC1 and NPC2) proteins and membrane contact sites to other organelles (Lu et al. 2021, Trinh et al. 2020). Loss of NPC proteins causes lysosomal accumulation of cholesterol, which can be rescued by cyclodextrin-mediated cholesterol extraction or by artificial membrane tethering (Abi-Mosleh et al. 2009, Höglinger et al. 2019). Genetic defects in NPC proteins lead to the development of the fatal lysosomal storage disorder Niemann-Pick type C disease that also manifests with neurodegeneration. Autophagy is the predominant cellular pathway of nonspecific degradation of macromolecular material, including organelles, lipid droplets, and protein aggregates such as  $\beta$ -amyloid (Barbero-Camps et al. 2018). During autophagic degradation, intracellular material is sequestered into double-membrane vesicles termed autophagosomes that finally fuse with lysosomes for cargo turnover. Cholesterol depletion, as well as loading, induces autophagosome formation in cell culture but might slow the flux rates (Barbero-Camps et al. 2018, Shapira et al. 2021). Of note, the miR17–92 microRNA cluster regulates lipid and cholesterol metabolism, including autophagy (Estfanous et al. 2021).

### Central Nervous System Versus Peripheral Cholesterol Metabolism

The body meets its cholesterol demand from nutrition-derived sources and cellular synthesis. Under normal conditions, nutrition accounts for approximately 25–30% of the body's cholesterol. Endogenous cholesterol synthesis is adjusted to the amount of cholesterol intake. Because of its lipophilicity, cholesterol is not transported freely in the circulation but bound to either blood proteins such as albumin or contained in lipoproteins, which carry free cholesterol in the limiting layer and esterified cholesterol in their lipophilic core. Several classes of lipoproteins are responsible for cholesterol transport in the circulation.

Low-density lipoprotein (LDL) predominantly mediates cholesterol transport from the liver to other organs, while high-density lipoprotein (HDL) mediates transport from the organs back to the liver, a process called reverse cholesterol transport (Gordon et al. 2015). These two major classes of lipoproteins, which are both essential for human health, differ in size, density, and lipid, protein, and apolipoprotein composition. Of note, although cholesterol has been designated “bad cholesterol” or “good cholesterol” when transported by LDL or HDL, respectively, the cholesterol molecules are identical.

LDL particles and related lipoproteins contain apolipoprotein B100 (ApoB100), which binds to the family of lipoprotein receptors, with low-density lipoprotein receptor (LDLR) and low-density lipoprotein-related protein 1 (LRP1) as the most prominent members. Binding triggers the uptake and clearance of LDL in lysosomal compartments. In contrast, HDL contains mainly apolipoprotein A-I (ApoA-I) and releases cholesterol esters without internalization, which involves

either scavenger receptor (SR-BI) or extracellular lipases. Lipidation of HDL occurs via efflux ATP-binding cassette (ABC) transporters such as ABCA1 (Rohatgi et al. 2021).

Apolipoprotein E (ApoE) is contained in several lipoprotein particles such as chylomicrons, the subset of ApoB-containing very-low-density and intermediate-density lipoproteins. HDLs carry only a minor fraction of ApoE. In humans, three ApoE alleles have been found, termed *APOE2*, *APOE3*, and *APOE4*. Although the underlying polymorphisms comprise only two point mutations, the resulting ApoE variants show strongly altered cholesterol transport capabilities (Chen et al. 2021b). Independent of age-related trajectories, lifelong total serum cholesterol levels of *APOE2* carriers are approximately 10 mg/dL below those of *APOE4* carriers (Downer et al. 2014). In comparison to *APOE2* or *APOE3*, *APOE4*-containing lipoproteins carry low levels of cholesterol. The *APOE4* allele is a recognized risk factor for diseases with vascular contributions, including cardiovascular disease and dementia, particularly AD (Chen et al. 2021b). In contrast, the *APOE2* allele is associated with decreased risk to develop AD.

Lipoprotein subclasses have been identified based on their size and protein composition. This likely also reflects functional differences, but the specific role of each subclass is not well understood. In healthy adult individuals, HDL contains approximately 20–30% of the blood cholesterol, whereas LDL contains 60–70%. Adding a layer of complexity, lipoprotein particles of different classes vividly exchange apolipoproteins and lipids, including cholesterol esters, and the process is mediated by the cholesterol ester transfer protein in humans. Due to the absence of this enzyme in rodents, separation of lipoprotein classes is stricter, resulting in approximately 60% of plasma cholesterol being associated with HDL (Gordon et al. 2015). The sterol backbone of cholesterol cannot be enzymatically disassembled in mammals. Consequently, degradation of cholesterol is achieved after conversion to bile acids, which is followed by biliary excretion.

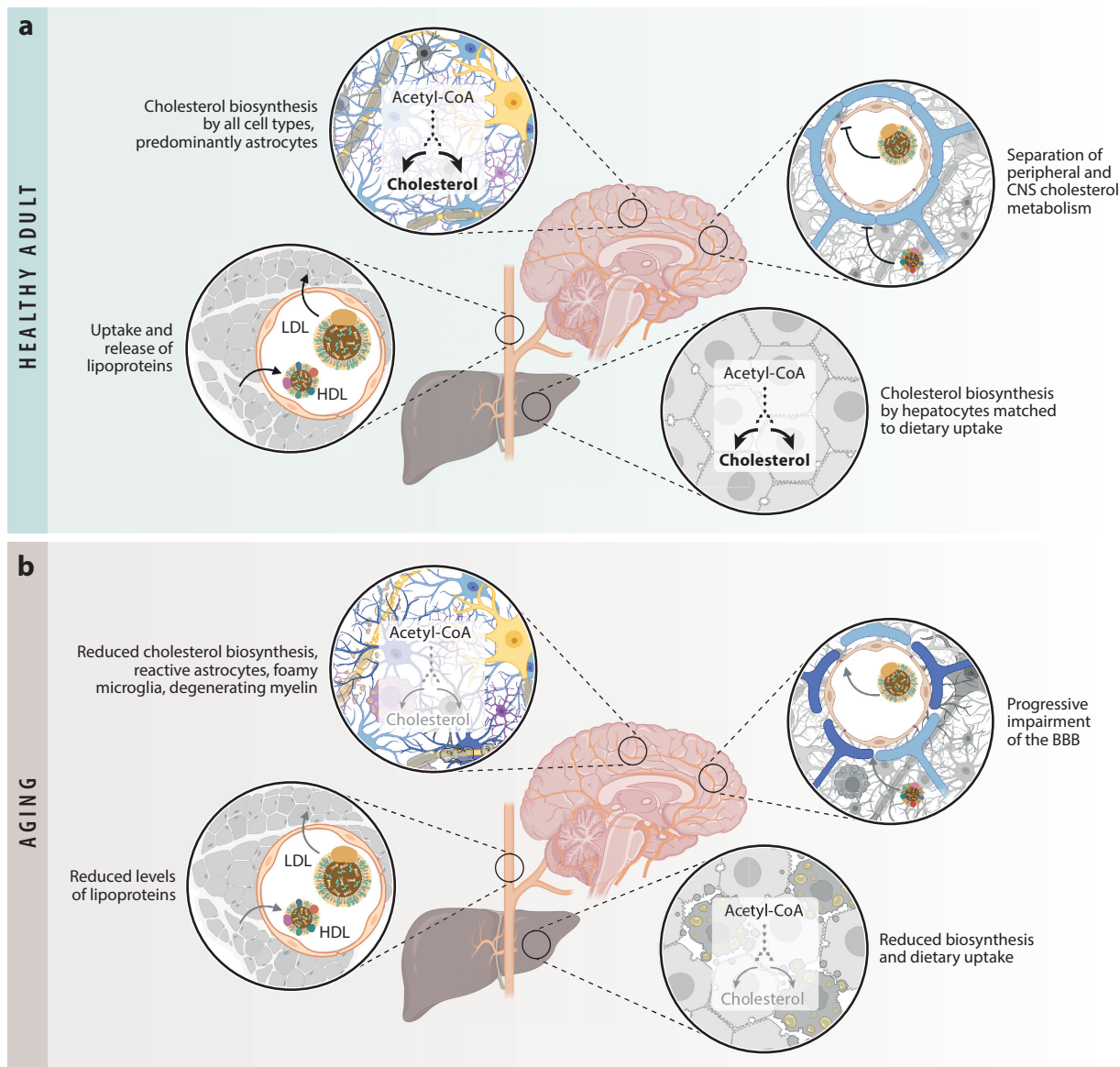
Pharmaceutical interventions affecting cholesterol metabolism target the absorption of dietary and biliary cholesterol in the small intestine, the hepatic clearance of LDL, and the reverse cholesterol transport (Herink & Ito 2000). In addition, cholesterol synthesis is inhibited by statins. These cholesterol-lowering drugs have been used for decades and are the most commonly prescribed drugs worldwide. In the United States, approximately 30% of adults, and almost 50% of people aged 75 years or older, take cholesterol-lowering medications. Statins are prescribed to adults that present with elevated serum cholesterol and LDL cholesterol levels and increased risk for cardiovascular disease (Das et al. 2020, Gu et al. 2014). All these treatments efficiently interfere with different aspects of cholesterol metabolism. However, studies have also highlighted gradual endogenous compensation for pharmacological inhibition such as slightly but steadily increasing blood cholesterol and LDL cholesterol levels after long-term statin treatment (Dorsch et al. 2021, Xu et al. 2017).

The pool of cholesterol in the periphery is separated from the cholesterol in the nervous system. Normal concentrations of total cholesterol in plasma are around 200 mg/dL, and only 0.6 mg/dL are found in the cerebrospinal fluid (CSF) of adult healthy individuals (Koch et al. 2001). Furthermore, turnover rates of cholesterol strongly differ between the brain and circulation; in plasma, cholesterol is replaced within days, whereas the half-life of cholesterol in the adult brain is very long, approximately 1 year in mice and 5 years in humans (Ando et al. 2003, Wang & Eckel 2014). Brain cholesterol is almost completely independent of nutritional input, as the blood-brain barrier largely prevents entry of circulating cholesterol into the brain. As a consequence, local production of cholesterol in the brain meets almost the entire demand for this essential lipid in the CNS (Björkhem & Meaney 2004, Saher & Stumpf 2015). The rate of CNS cholesterol synthesis correlates with the expansion of cellular membranes, for example, to facilitate proliferation and neurite extension during embryonic development (Fünfschilling et al. 2012). The highest rate of CNS sterol synthesis, however, is coupled to the production of the lipid- and cholesterol-rich myelin

membranes. In humans, myelination commences in the second trimester of gestation and continues for several years postnatally, whereas CNS myelination in rodents largely takes place early postnatally (Saher et al. 2005, Wilson et al. 2021). In adult brains of rodents, approximately 70–80% of the cholesterol is found in myelin (Björkhem & Meaney 2004). Myelin membranes are produced by oligodendrocytes that extend cell processes around axons to insulate and protect these neuronal projections. Myelin membranes and cholesterol are intrinsically tied to each other, as the availability of cholesterol is rate limiting for myelination (Camargo et al. 2017, Saher et al. 2005). Surprisingly, oligodendrocyte differentiation can be promoted by a short pulse of statin treatment *in vitro* (Miron et al. 2007), pointing to the complex relationship between transcriptional control of oligodendrocyte differentiation and cholesterol synthesis. In the brain, other sterols, such as 8,9-unsaturated sterol synthesis intermediates and 24,25-epoxycholesterol, have been linked to enhanced differentiation of oligodendrocytes (Allimuthu et al. 2019; Hubler et al. 2018, 2021), but the mechanism of these (presumably) signaling events remains enigmatic. Genetic deletion of SREBP or SCAP in astrocytes mediated by a human GFAP-Cre driver line also affects myelination and causes neurological defects (Camargo et al. 2017, Ferris et al. 2017, van Deijk et al. 2017). In addition, peripheral lipid metabolism is also severely perturbed in conditional SREBP mutants, but the causing mechanism remains unclear (Ferris et al. 2017).

After myelination has been largely accomplished, the rate of cholesterol synthesis drops to a low steady-state level in the adult CNS. Cholesterol synthesis by astrocytes is highest in the adult CNS, but presumably every cell type continues to contribute to cholesterol homeostasis by low-level endogenous synthesis (**Figure 1a**). Notably, inactivation of cell type-specific cholesterol synthesis in adult mice is endogenously compensated; targeting the squalene synthase, the first enzyme of the pathway devoted to sterol synthesis, in neurons, astrocytes, oligodendrocytes, or microglia of adult mice does not cause brain pathology (Berghoff et al. 2021a,b; Fünfschilling et al. 2012). Lipoprotein-mediated transport of cholesterol also exists in the CNS. Although similar to the circulation, the complexity of this intercellular transport system in the CNS remains far below that of the periphery. ApoE is the major apolipoprotein in the CNS; other apolipoproteins such as ApoA-I, ApoD, and ApoJ have also been found in the human brain (Wang & Eckel 2014). Although lipoprotein subclasses also exist in the CNS, all lipoprotein particles therein are most similar to plasma HDL. Astrocytes are the major producers of cholesterol in the adult CNS and also synthesize the majority of the CNS ApoE (Dietschy 2009). Thus, astrocytes likely provide cholesterol to other brain cells via lipoprotein-mediated transport. However, virtually all brain cells synthesize ApoE, ABC transporters, and lipoprotein receptors and are thereby able to release, lipidize, and internalize lipoproteins. The complexity of lipoprotein-mediated cholesterol transport in the CNS is not well understood. Excretion of cholesterol from the CNS across the blood-brain barrier requires oxidative modification of the cholesterol side chain to increase hydrophilicity. This process leads to the formation of the major and brain-specific CNS oxysterol 24S-hydroxycholesterol. This conversion, which is mediated by the enzyme CYP46A1, occurs mainly in a subtype of neurons under physiological conditions. Other oxysterols in the CNS comprise 27-hydroxycholesterol and 25-hydroxycholesterol, whose synthesis can occur in all CNS cell types. Another export pathway might involve lipoprotein-mediated transport across the blood-brain barrier with unknown specifications (Xie et al. 2003).

In addition to enzymatic production, autooxidation can lead to the formation of oxidized derivatives of cholesterol. Several oxysterols have been linked to signaling cascades. For example, certain oxysterols are known endogenous activators of liver X receptor (LXR) of the nuclear receptor family (Y. Wang et al. 2021). LXR signaling mediates the release of cellular cholesterol to lipoproteins via ABC transporters. Proinflammatory processes are also dampened by this signaling pathway (Spann et al. 2012). In addition to oxysterols, LXR signaling can be activated by



**Figure 1**

Cholesterol metabolism in the healthy adult and aging-related changes. (a) In healthy adult individuals, circulating cholesterol is regulated by hepatic synthesis that is matched to dietary uptake. The complex cholesterol biosynthesis pathway starts from acetyl coenzyme A (acetyl-CoA), a central metabolic intermediate. Circulating cholesterol is predominantly contained in lipoproteins. Low-density lipoproteins (LDLs) mediate cholesterol transport to recipient organs, whereas high-density lipoproteins (HDLs) mediate the reverse cholesterol transport back to the liver. Cholesterol metabolism in the body is separated from that of the brain because of the shielding function of the blood-brain barrier (BBB). Consequently, all cells of the adult brain, but predominantly astrocytes, synthesize cholesterol. In addition, central nervous system (CNS) lipoproteins mediate intercellular transport of cholesterol and other lipids. (b) With aging, several aspects of cholesterol metabolism change. Lower circulating cholesterol levels are caused by reduced dietary uptake and hepatic synthesis, potentially due to dysfunctional hepatocytes. Cholesterol synthesis also decreases in the brain. Progressive degeneration of CNS processes and the diminishing ability to turn over debris lead to activated astrocytes and to increasing densities of foamy-appearing microglia. The resulting low-level but chronic inflammation contributes to vascular defects and the gradual impairment of the BBB, which further perturbs CNS cholesterol metabolism. Figure adapted from images created with BioRender.com.

certain sterol synthesis intermediates such as squalene and desmosterol (Berghoff et al. 2021b, Muse et al. 2018). Linked to LXR signaling, the oxysterol 25-hydroxycholesterol activates the nucleotide-binding oligomerization domain, leucine-rich repeat, pyrin domain-containing protein 3 (NLRP3) inflammasome (Duewell et al. 2010, Jang et al. 2016, Y. Wang et al. 2021). Another mechanism involves SCAP, whose glycosylation leads to the disruption of cholesterol feedback regulation and foamy accumulation of lipids in a macrophage cell line (Zhou et al. 2013). Increased levels of keto-cholesterol, another oxygenized derivative of cholesterol that is used as a marker for oxidative stress and by itself damages cell membranes, have been found in age-related diseases (Anderson et al. 2020). As a major driver of aging and neurodegeneration, mammalian target of rapamycin (mTOR) signaling integrates cellular energy metabolism with stress and autophagy-mediated degradation (Liu & Sabatini 2020). SREBP transcription factors are targets of mTOR, and lysosomal cholesterol activates mTOR signaling, revealing that the cholesterol-mTOR axis plays a central role in cellular homeostasis (Liu & Sabatini 2020). However, the complex interplay of the regulation of cholesterol synthesis, brain cell differentiation, and inflammation, especially in the aging brain, remains largely unsolved.

## CHOLESTEROL METABOLISM DURING AGING AND IN AGE-RELATED NEUROLOGICAL DISEASES

### Cholesterol Metabolism During Aging

Serum cholesterol and LDL cholesterol levels increase until adulthood and decline later in life after adjusting for confounding factors such as environmental and hormonal factors, socioeconomic status, and cholesterol-lowering medication (Downer et al. 2014, Silbernagel et al. 2010, Tilvis et al. 2011). This age-related decline of cholesterol levels is accompanied by both reduced dietary absorption and hepatic synthesis (**Figure 1b**). Hypercholesteremia and obesity in middle-aged individuals are known to associate with the development of dementia (Dai et al. 2021), which is likely also promoted by vascular defects. Surprisingly, in aged individuals, low plasma cholesterol, low synthesis/uptake, and even low LDL cholesterol have been associated with poor health and mortality (Lv et al. 2015, Schupf et al. 2005, Silbernagel et al. 2010, Tilvis et al. 2011). Although controversial, the risk of developing side effects from cholesterol-lowering medication might be increased in aged people (Alsehli et al. 2020, Thompson et al. 2016, Ward et al. 2019). Moreover, survival beyond 90 years of age was linked to rising plasma cholesterol levels during old age (Downer et al. 2014). Higher LDL levels predicted healthy survival in a study with women aged 68 years or older that survived their ninetieth birthday (Maihofer et al. 2020), challenging the bad reputation of elevated cholesterol and LDL-cholesterol in elderly people. The link between blood cholesterol and cellular senescence is likely indirect, as the HDL efflux capacity in leukocytes did not correlate with telomere length, a marker of senescence, in elderly compared to middle-aged subjects (Zimetti et al. 2018). As low circulating-cholesterol levels have been linked to fatal liver cirrhosis (Janičko et al. 2013), it is possible that gradually impairing liver function could be the underlying cause of this association between blood cholesterol and longevity.

As in plasma, cholesterol levels and synthesis rates decrease in the adult and aging brain (Boisvert et al. 2018, de la Fuente et al. 2020, Thelen et al. 2006) (**Figure 1b**). Whether this trend reverses in very aged healthy brains, as observed in the circulation, is unknown. The reduced rate of brain cholesterol synthesis and presumably the reduced supply by astrocytes (Boisvert et al. 2018, Habib et al. 2020) go along with a decline in the extent of myelination and/or with reduced cholesterol content in myelin membranes (Stommel et al. 1989, Thelen et al. 2006). It is possible that in the aging brain, myelin serves as an alternative source of this essential lipid to maintain brain cholesterol homeostasis. Contributing to the increasing loss of myelin, the rate



and efficiency of myelin repair decrease with age (Cantuti-Castelvetri et al. 2018, Franklin et al. 2021). This decrease has been attributed to inefficient recycling of lipids and cholesterol from the phagocytosing microglia/macrophages (Berghoff et al. 2021b, Cantuti-Castelvetri et al. 2018). The density of synapses, which also contain high cholesterol levels, also declines during aging. Reduced cholesterol content in cell membranes likely affects membrane dynamics and subsequently endocytosis and exocytosis events (Burrinha et al. 2021). Chronic (low-grade) inflammation in the aged brain, also designated inflammaging, manifested in reactive astrocytes and microglia, likely also counteracts repair processes.

### **Impaired Cholesterol Homeostasis in Age-Related Neurological Disease**

The dysregulation of sterol metabolism in age-related neurodegenerative diseases is dictated by disease-specific features, but some factors are shared between diseases, for example, certain single-nucleotide polymorphisms (SNPs), dysfunctional membrane domains, and vascular defects that critically promote brain diseases. The details of sterol metabolism in stroke as an intracranial atherosclerotic disease, Parkinson's disease, and myelin-related disorders such as multiple sclerosis are covered by excellent recent reviews (Berghoff et al. 2022, Groenen et al. 2021, Pingale & Gupta 2021). In the following paragraphs, we focus on the interplay between sterol metabolism, aging, and AD.

AD symptoms begin with minor disorientation and language perturbances that progress to confusion, loss of speech, and memory loss. AD also often presents with sleep disturbances and mood changes gradually affecting behavioral and social skills. Disease progression also leads to a broad range of neuropsychiatric symptoms such as depression, anxiety, delusions, or aggressiveness. Due to the initially subtle clinical changes that can hardly be distinguished from normal aging and the oftentimes slow rate of disease progression in the preclinical and prodromal stages of AD, disease onset can precede the diagnosis of dementia by decades (Vermunt et al. 2019). However, clinical deterioration can also progress fast, especially in the terminal stage of the disease. The duration of AD stages shortens with age, and aging is the strongest risk factor for AD (DeTure & Dickson 2019, Vermunt et al. 2019).

The two cardinal histopathological hallmarks of AD are the formation of intraneuronal aggregates of phosphorylated microtubule-associated protein tau in neurofibrillary tangles and extracellular deposits of amyloid in senile plaques. Loss of neurons and, more importantly, loss of synapses and synaptic plasticity are linked to initial cognitive deficits (Burrinha et al. 2021, Morrison & Baxter 2012, Peters et al. 2008a). Gliosis, neuroinflammation, and oxidative stress accompany brain damage (Edler et al. 2021). Biomarkers of preclinical AD include amyloid and tau levels in CSF and PET (positron emission tomography) analysis. On the biochemical level, homeostasis of calcium is disrupted, and there are disturbances of cholesterol and phospholipid metabolism and secondary effects on mitochondrial functions. These mitochondrial changes might involve dysfunction of membrane contact sites, as observed in mouse models of AD as well as in AD patients (Area-Gomez & Schon 2017). Moreover, dysregulated carbohydrate metabolism has been recognized as another early feature of dementia/AD (Bonvento & Bolanos 2021). Despite these neuropathological hallmarks of AD, the majority of patients suffer from age-associated comorbidities of dementia and cerebrovascular spectrums contributing to the variability of clinical presentations.

The understanding of the etiology of AD has developed from a pure neuronal pathology to a multifactorial disorder with many risk loci that involves all cell types in the brain and the immune system, although the number of risk loci is debated (Bellenguez et al. 2022; Johnson et al. 2020, 2022; Yang et al. 2022; Zhang et al. 2020a). Effective disease-modifying therapies of this complex

Supplemental Material >

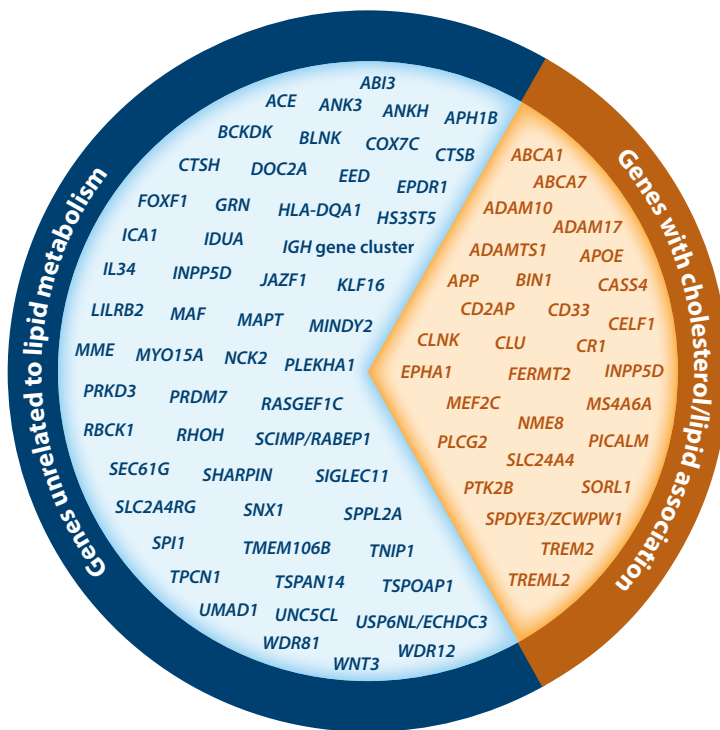


Figure 2

Genome-wide association studies and expression studies have revealed genes that are associated with Alzheimer's disease (AD) risk (see also **Supplemental Table**). Approximately a third of those risk genes that are known to date have been related to sterol and lipid metabolism (*orange*). These lipid- and cholesterol-associated risk genes are predominantly implicated in cellular lipid/cholesterol release, transport, and uptake, suggesting that these processes play a major role in AD pathogenesis.

disorder will require the individual targeting of multiple features of AD and comorbidities, likely in personalized approaches.

AD and cholesterol metabolism are intimately linked to each other on several levels. This fact is reflected by risk factors of AD, many of which, in addition to aging, relate to cholesterol/lipid metabolism (**Figure 2**; **Supplemental Table**). The strongest risk factor for late-onset sporadic AD is, in addition to age, the *APOE4* allele. Genome-wide association studies (GWASs) identified further genes involved in cholesterol transport, including clusterin, phosphatidylinositol-binding clathrin assembly protein (PICALM), ABCA7, and triggering receptor expressed on myeloid cells 2 (TREM2). In contrast, the rare Christchurch mutation in the *APOE3* gene is associated with slowed AD progression, further strengthening the link between AD pathogenesis and cholesterol/lipid metabolism. The recognized risk factors for familial AD are mutations in the amyloid precursor proteins (APPs) and the APP-processing enzymes presenilin-1 and presenilin-2 that form the  $\gamma$ -secretase complex. APP proteolysis occurs within cellular membranes and is closely linked to neuronal cholesterol metabolism (see below). However, other lipid species, including the polyunsaturated fatty acid docosahexaenoic acid, likely affect disease processes in aging and age-related diseases (Grimm et al. 2017).

Hypercholesterolemia in middle-aged individuals is an established risk factor for the incidence and progression of AD (Dai et al. 2021). Plasma lipidomes, including cholesteryl ester levels from

AD cases, differ from age-matched controls and individual lipids differentially associated with SNPs in risk genes (Liu et al. 2021). Carriers of the *APOE4* allele have a fourfold- to 14-fold-higher (homozygous carriers) increased risk of developing AD. With respect to dyslipidemia, aging critically affects AD pathology, as a higher late-life body mass index (BMI) might protect against progression to AD (Sun et al. 2020), and a decreasing BMI increased the risk of developing amyloid pathology (Lane et al. 2021). In a meta-analysis, lipid-lowering medication either did not affect AD risk or suggested an increased risk of developing AD (Williams et al. 2020).

Moreover, conflicting findings with respect to sterol levels in the plasma, brain, and CSF of human patients (Dai et al. 2021, Jahn et al. 2021, Varma et al. 2021) suggest a complex relationship of sterol metabolism and AD. This is supported by GWASs and expression studies that found lipid/cholesterol-associated genes to be distributed over several clusters and pathways of lipid metabolism (Bellenguez et al. 2022, Johnson et al. 2022, Zhang et al. 2020a). Inferring from this and the cellular expression pattern of risk genes, we hypothesize that a distinct cell type-specific role in brain sterol metabolism could be a causative factor for AD pathogenesis.

## CELLULAR CONTRIBUTIONS TO BRAIN AGING AND ALZHEIMER'S DISEASE

Initial cognitive decline in the aging brain occurs without loss of neurons. Rather, deteriorating neuronal performance, involving information processing and synaptic transmission, accounts for accumulating disabilities in the cortex and hippocampus of different species (Bishop et al. 2010, Peters et al. 2008a), but brain region-specific differences might exist. In contrast to neurons, oligodendrocyte densities increase with age in the visual cortex of rhesus monkeys (Peters et al. 2008b). Oligodendrocyte lineage cells are capable of cell renewal throughout life, accounting for the majority of proliferating cells in the adult healthy brain. However, increased age correlates with decreasing myelin internode lengths and accumulating myelin membrane abnormalities (Peters et al. 2008b). The degree of age-related myelin loss likely depends on the species and brain region. Myelin loss might even aggravate AD pathology in patients and amyloidosis models (Chen et al. 2021a, Depp et al. 2021, Zhang et al. 2020b). In the cortex of aging animals and humans, the astrocyte cell population remains stable, whereas microglial cell densities might increase, remain unchanged, or decrease (Boisvert et al. 2018, Edler et al. 2021, Peters et al. 2008b). Whether these discrepant findings of microglial cell population originate from varying degrees of brain insults during the prolonged life span remains unsolved. However, accumulating intracellular inclusions of proteins and lipids in cortical astrocytes, microglia, and neurons of aged healthy animals likely reflect a progressive impairment in being able to degrade waste products. The link between aging/senescence and waste degradation is further supported by the finding that rejuvenated aged microglia increased amyloid turnover in slice cultures (Daria et al. 2017). Moreover, genetic or pharmacological reinforcement of apoptosis of senescent glial cells in a tauopathy model prevented neurodegeneration and cognitive decline (Bussian et al. 2018). As the intracellular deposition of aggregated material, collectively designated as lipofuscin, increases in size and density in the context of degenerative CNS disease, turnover defects might contribute to the progressive functional exhaustion and senescence of cells, predominantly microglia (Safaiyan et al. 2016). The appearance of lipofuscin has been linked to failing catabolism via autophagosomes, which has been recognized as a key feature of senescent cells together with increased concentrations of reactive oxygen species and mitochondrial damage.

In the aging brain and in aged neurons, the cholesterol content decreases (Boisvert et al. 2018, de la Fuente et al. 2020, Thelen et al. 2006), likely disturbing the density of lipid packing as well as membrane fluidity and stiffness (Vanmierlo et al. 2011). These altered membrane properties

affect synaptic plasticity and could render membranes vulnerable to microruptures. Whether these changes in the lipid organization are part of the physiological aging process or reflect the adaptation to age-related damage is still unknown. The moderate decrease of membrane cholesterol content in neurons might be linked to the increasing activity of *CYP46A1* (Lund et al. 1999), which hydroxylates cholesterol, leading to the excretion of this lipid from the CNS. Increased esterification of cholesterol by the microsomal enzyme *SOAT1* [also designated *ACAT1*, acyl-coenzyme A (acyl-CoA):cholesterol acyltransferase 1], which leads to cholesterol ester storage in lipid droplets, might also contribute to the aberrant handling of cholesterol in neurons.

In AD brains, compared to age-matched control individuals, transcripts of *CYP46A1* as well as cholesterol synthesis genes are decreased and, accordingly, steady-state brain cholesterol levels remain unchanged (Varma et al. 2021). However, indirect effects on neuronal cholesterol metabolism, mediated by ectopic expression of *CYP46A1* in AD astrocytes, are possible (Zarrouk et al. 2014). The importance of these cholesterol modifications for AD is further supported by improved amyloid pathology in APP-transgenic mice in which *CYP46A1* activity was increased (Mast et al. 2017, van der Kant et al. 2019) or *SOAT1* activity was decreased, either pharmacologically or genetically (Bryleva et al. 2010, Hutter-Paier et al. 2004).

Cholesterol is involved in both tau and amyloid pathogenesis in AD, and statin-mediated reduction of cholesterol levels generated mixed results (Dai et al. 2021), arguing in favor of cholesterol metabolism defects beyond its brain concentration. In AD brains and in the majority of rodent models of AD pathology, neurons are the major cell type that produces  $\beta$ -amyloid and hyperphosphorylated misfolded tau. They are vulnerable to the toxicity of accumulating  $\beta$ -amyloid and aggregating neurofibrillary tangles, leading to progressive neuronal death and brain atrophy. In addition to cell-autonomous defects, degenerating neurites in the vicinity of senile plaques and spatiotemporal propagation of tau misfolding lead to the spreading of pathogenic processes.

Every step in the generation of senile plaques from APP is linked to cholesterol. As this process has been the subject of many excellent reviews (Grimm et al. 2017), only some key facts are presented here. The  $\beta$ -amyloid-generating enzyme complex, including  $\beta$ - and  $\gamma$ -secretases, resides in membrane lipid microdomains of the plasma membrane and internal membranes. According to one theory, decreasing cholesterol levels in membrane microdomains enhance the probability that APP and secretases colocalize in internal membranes, increasing  $\beta$ -amyloidogenic over non-amyloidogenic APP cleavage. However, statin treatment can reduce APP processing in induced pluripotent stem cell neurons (Langness et al. 2021), suggesting that the reduction of neuronal cholesterol can have both beneficial and detrimental effects. Proteolysis products of APP comprise not only  $\beta$ -amyloid but also several carboxyterminal fragments (CTFs). The CTF C99 directly binds cholesterol, which could sequester cholesterol from internal membranes, further disturbing cellular cholesterol homeostasis (Barrett et al. 2012), which could lead to a vicious cycle of  $\beta$ -amyloid production and the disruption of cholesterol homeostasis. In addition,  $\beta$ -amyloid oligomerization and deposition has been linked to the cholesterol content of adjacent model membranes (Banerjee et al. 2021). Of note, in addition to APP processing, several signaling pathways that originate from raft microdomains are affected in aging cells, including insulin and tropomyosin receptor kinase B (TrkB) receptor signaling, further aggravating disease processes in AD neurons (Chow et al. 2019, Martin et al. 2008). Tau pathology is also linked to cholesterol metabolism as tau uptake, release into the neuronal cytosol, and seeding depend on reduced membrane cholesterol (Tuck et al. 2022). Despite many conflicting reports related to the cell biology of amyloidosis and tau pathology in cell culture and in rodent models, these findings suggest that these two hallmarks of AD pathology could be moderated if membrane cholesterol homeostasis was maintained.

In adult animals, neuronal cholesterol levels are regulated by cell-autonomous synthesis and uptake of ApoE-containing lipoproteins. In agreement with the *APOE4* variant being the major risk factor for sporadic AD, amyloid and tau pathologies have been linked to lipoprotein-mediated cholesterol transport in the brain. The large body of publications related to the complex relationship between ApoE biology and brain pathology has been reviewed elsewhere (Chen et al. 2021b). Briefly, the loss of ApoE causes vascular dysfunction and hypercholesteremia (Lane-Donovan et al. 2016). Although neurodegeneration is not a feature of ApoE knockout mice, these mutants suffer from synaptic defects and cognitive impairment in aged mutants (Fuentes et al. 2018). When ApoE knockout mice are challenged by amyloid pathology, the density of senile plaques is reduced without changing APP processing (DeMattos et al. 2004). In contrast, *APOE4* transgenic mice show exacerbated pathology, with respect to not only plaque load but also synaptic defects and neurodegeneration, similar to *APOE4* carriers. The *APOE4* allele also interferes with cellular cholesterol regulation and handling, including cholesterol secretion, esterification, and storage in lipid droplets (Fernandez et al. 2019). Moreover, the cellular source of ApoE has consequences for amyloid and tau pathologies (Henningfield et al. 2022, Mahan et al. 2022, C. Wang et al. 2021, H. Wang et al. 2021) and also for neuronal (hyper)activity (Konings et al. 2021), which is a feature of AD neurons. In light of the role of CYP46A1-mediated excretion of cholesterol from the CNS, these findings point to the flux of cholesterol between brain cells as a critical factor in AD pathology.

Aging-mediated attenuation of membrane cholesterol levels is likely not restricted to neurons but could directly affect the physiology of glial cells. Astrocytes, and even more so, microglia, whose surveilling functions depend on membrane dynamics, could suffer from age-related deficits in lipid homeostasis. Aging microglia progressively lose the motility of cell processes, and the density of microglia with resting/ramified morphology decreases. Moreover, their ability to migrate, a feature that is essential for many pathophysiological processes, also declines with increasing age. Together, these age-related changes reflect the loss of protective properties (Damani et al. 2011). Losing the ability to handle intracellular lipids is a key feature of aging microglia, leading to intracellular accumulation of cholesterol (Cantuti-Castelvetri et al. 2018, Marschallinger et al. 2020). Moreover, engaging CNS phagocytes with increased cholesterol turnover induced by a demyelinating insult exaggerated amyloidosis in mice (Depp et al. 2021). One central player in microglial phagocytosis and cholesterol handling is TREM2 (Gouna et al. 2021), which also plays a role in the clearance of  $\beta$ -amyloid (Lee et al. 2018, Nugent et al. 2020). Of note, in AD patients and mice, elevated levels of the lipid-associated miR17-92 cluster have been linked to the impairment of microglial autophagy of  $\beta$ -amyloid (Estfanous et al. 2021). Pharmacological support of autophagy coupled to suppression of mTOR reduces the amyloid burden in an AD model (Li et al. 2021). The aging microglial phenotype is accompanied by increasing cell activation, which is coupled to upregulation of proinflammatory mediators such as tumor necrosis factor (TNF) and downregulation of homeostatic markers such as transforming growth factor beta (TGF- $\beta$ ) (Provenzano et al. 2021). Expression profiling of microglia has led to the identification of disease- and age-associated molecular patterns (Depp et al. 2021, Provenzano et al. 2021, Safaiyan et al. 2021). Similarly, aging astrocytes partially lose the complexity of process arborization, accumulate autophagosomes, and show increasing defects of proteostasis (Lee et al. 2022, Orre et al. 2014), suggesting that the link between age-related defects and cholesterol metabolism is rather indirect in this cell type.

## CONCLUDING REMARKS

Age-related alterations and cholesterol metabolism are intimately linked to brain homeostasis. The cholesterol level and the rate of de novo cholesterol synthesis decrease in the aging brain. Moreover, the subcellular distribution and handling of cholesterol and its derivatives are

affected, which also influence cellular and brain lipid metabolism. These alterations in cellular lipid metabolism are accompanied by progressive impairment of waste disposal, low-grade inflammation, and metabolic disturbances. All cell types of the brain show overlapping and distinct cholesterol-related alterations in the aging brain. Future studies of this rapidly growing research field will unravel the subcellular defects and causal relationship between dysfunctional cholesterol metabolism and cell activation, increased reactive oxygen species, and inflammation that promotes aging and the development of age-related pathologies.

## DISCLOSURE STATEMENT

The author is not aware of any affiliations, memberships, funding, or financial holdings that might be perceived as affecting the objectivity of this review.

## ACKNOWLEDGMENTS

In the attempt to write a concise, clear review on this rapidly expanding scientific field, it was necessary to restrict the discussion to some of the relevant topics. We apologize to the scientific community that we were unable to discuss all relevant work owing to restrictions of word count and number of references. I thank Klaus-Armin Nave for constant support, Lena Spieth for helpful input on the manuscript, Simone Eggert for critical reading, and the Neurogenetics lab for fruitful discussions. This work was supported by the Alzheimer Forschung Initiative e.V. (19070), the Deutsche Forschungsgemeinschaft (SA2114/2), and the Wilhelm Sander-Stiftung fund (2019.138.1).

## LITERATURE CITED

- Abi-Mosleh L, Infante RE, Radhakrishnan A, Goldstein JL, Brown MS. 2009. Cyclodextrin overcomes deficient lysosome-to-endoplasmic reticulum transport of cholesterol in Niemann-Pick type C cells. *PNAS* 106:19316–21
- Allimuthu D, Hubler Z, Najm FJ, Tang H, Bederman I, et al. 2019. Diverse chemical scaffolds enhance oligodendrocyte formation by inhibiting CYP51, TM7SF2, or EBP. *Cell Chem. Biol.* 26:593–99.e4
- Alsehli AM, Olivo G, Clemensson LE, Williams MJ, Schiöth HB. 2020. The cognitive effects of statins are modified by age. *Sci. Rep.* 10:6187
- Anderson A, Campo A, Fulton E, Corwin A, Jerome WG 3rd, O'Connor MS. 2020. 7-Ketocholesterol in disease and aging. *Redox. Biol.* 29:101380
- Ando S, Tanaka Y, Toyoda Y, Kon K. 2003. Turnover of myelin lipids in aging brain. *Neurochem. Res.* 28:5–13
- Area-Gomez E, Schon EA. 2017. Alzheimer disease. In *Organelle Contact Sites: From Molecular Mechanism to Disease*, ed. M Tagaya, T Simmen, pp. 149–56. Singapore: Springer Singapore
- Banerjee S, Hashemi M, Zagorski K, Lyubchenko YL. 2021. Cholesterol in membranes facilitates aggregation of amyloid  $\beta$  protein at physiologically relevant concentrations. *ACS Chem. Neurosci.* 12:506–16
- Barbero-Camps E, Roca-Agujetas V, Bartollessis I, de Dios C, Fernández-Checa JC, et al. 2018. Cholesterol impairs autophagy-mediated clearance of amyloid  $\beta$  while promoting its secretion. *Autophagy* 14:1129–54
- Barrett PJ, Song Y, Van Horn WD, Hustedt EJ, Schafer JM, et al. 2012. The amyloid precursor protein has a flexible transmembrane domain and binds cholesterol. *Science* 336:1168–71
- Beker N, Sikkes SAM, Hulsman M, Tesi N, van der Lee SJ, et al. 2020. Longitudinal maintenance of cognitive health in centenarians in the 100-plus study. *JAMA Netw. Open* 3:e200094
- Bellenguez C, Küçükali F, Jansen IE, Kleindam L, Moreno-Grau S, et al. 2022. New insights into the genetic etiology of Alzheimer's disease and related dementias. *Nat. Genet.* 54:412–36
- Berghoff SA, Spieth L, Saher G. 2022. Local cholesterol metabolism orchestrates remyelination. *Trends Neurosci.* 45:272–83
- Berghoff SA, Spieth L, Sun T, Hosang L, Depp C, et al. 2021a. Neuronal cholesterol synthesis is essential for repair of chronically demyelinated lesions in mice. *Cell Rep.* 37:109889

- Berghoff SA, Spieth L, Sun T, Hosang L, Schlaphoff L, et al. 2021b. Microglia facilitate repair of demyelinated lesions via post-squalene sterol synthesis. *Nat. Neurosci.* 24:47–60
- Bishop NA, Lu T, Yankner BA. 2010. Neural mechanisms of ageing and cognitive decline. *Nature* 464:529–35
- Björkhem I, Meaney S. 2004. Brain cholesterol: long secret life behind a barrier. *Arterioscler. Thromb. Vasc. Biol.* 24:806–15
- Boisvert MM, Erikson GA, Shokhirev MN, Allen NJ. 2018. The aging astrocyte transcriptome from multiple regions of the mouse brain. *Cell Rep.* 22:269–85
- Bonvento G, Bolanos JP. 2021. Astrocyte-neuron metabolic cooperation shapes brain activity. *Cell Metab.* 33:1546–64
- Brown MS, Radhakrishnan A, Goldstein JL. 2018. Retrospective on cholesterol homeostasis: the central role of Scap. *Annu. Rev. Biochem.* 87:783–807
- Bryleva EY, Rogers MA, Chang CC, Buen F, Harris BT, et al. 2010. ACAT1 gene ablation increases 24(S)-hydroxycholesterol content in the brain and ameliorates amyloid pathology in mice with AD. *PNAS* 107:3081–86
- Burrinha T, Martinsson I, Gomes R, Terrasso AP, Gouras GK, Almeida CG. 2021. Upregulation of APP endocytosis by neuronal aging drives amyloid-dependent synapse loss. *J. Cell Sci.* 134:jcs255752
- Bussian TJ, Aziz A, Meyer CF, Swenson BL, van Deursen JM, Baker DJ. 2018. Clearance of senescent glial cells prevents tau-dependent pathology and cognitive decline. *Nature* 562:578–82
- Camargo N, Goudriaan A, van Deijk AF, Otte WM, Brouwers JF, et al. 2017. Oligodendroglial myelination requires astrocyte-derived lipids. *PLoS Biol.* 15:e1002605
- Cantuti-Castelvetri L, Fitzner D, Bosch-Queralt M, Weil MT, Su M, et al. 2018. Defective cholesterol clearance limits remyelination in the aged central nervous system. *Science* 359:684–88
- Chen JF, Liu K, Hu B, Li RR, Xin W, et al. 2021a. Enhancing myelin renewal reverses cognitive dysfunction in a murine model of Alzheimer's disease. *Neuron* 109:2292–307.e5
- Chen Y, Strickland MR, Soranno A, Holtzman DM. 2021b. Apolipoprotein E: structural insights and links to Alzheimer disease pathogenesis. *Neuron* 109:205–21
- Chow H-M, Shi M, Cheng A, Gao Y, Chen G, et al. 2019. Age-related hyperinsulinemia leads to insulin resistance in neurons and cell-cycle-induced senescence. *Nat. Neurosci.* 22:1806–19
- Dai L, Zou L, Meng L, Qiang G, Yan M, Zhang Z. 2021. Cholesterol metabolism in neurodegenerative diseases: molecular mechanisms and therapeutic targets. *Mol. Neurobiol.* 58:2183–201
- Damani MR, Zhao L, Fontainhas AM, Amaral J, Fariss RN, Wong WT. 2011. Age-related alterations in the dynamic behavior of microglia. *Aging Cell* 10:263–76
- Daria A, Colombo A, Llovera G, Hampel H, Willem M, et al. 2017. Young microglia restore amyloid plaque clearance of aged microglia. *EMBO J.* 36:583–603
- Das SR, Everett BM, Birtcher KK, Brown JM, Januzzi JL, et al. 2020. Expert consensus decision pathway on novel therapies for cardiovascular risk reduction in patients with type 2 diabetes. *J. Am. Coll. Cardiol.* 76:1117–45
- de la Fuente AG, Queiroz RML, Ghosh T, McMurrin CE, Cubillos JF, et al. 2020. Changes in the oligodendrocyte progenitor cell proteome with ageing. *Mol. Cell. Proteom.* 19(8):1281–302
- DeMattos RB, Cirrito JR, Parsadanian M, May PC, O'Dell MA, et al. 2004. ApoE and clusterin cooperatively suppress A $\beta$  levels and deposition: evidence that ApoE regulates extracellular A $\beta$  metabolism in vivo. *Neuron* 41:193–202
- Depp C, Sun T, Sasmita AO, Spieth L, Berghoff SA, et al. 2021. Ageing-associated myelin dysfunction drives amyloid deposition in mouse models of Alzheimer's disease. bioRxiv 2021.07.31.454562. <https://doi.org/10.1101/2021.07.31.454562>
- DeTure MA, Dickson DW. 2019. The neuropathological diagnosis of Alzheimer's disease. *Mol. Neurodegener.* 14:32
- Dietschy JM. 2009. Central nervous system: cholesterol turnover, brain development and neurodegeneration. *Biol. Chem.* 390:287–93
- Dodge HH, Buracchio TJ, Fisher GG, Kiyohara Y, Meguro K, et al. 2012. Trends in the prevalence of dementia in Japan. *Int. J. Alzheimer's Dis.* 2012:956354
- Dorsch M, Kowalczyk M, Planque M, Heilmann G, Urban S, et al. 2021. Statins affect cancer cell plasticity with distinct consequences for tumor progression and metastasis. *Cell Rep.* 37:110056

- Downer B, Estus S, Katsumata Y, Fardo DW. 2014. Longitudinal trajectories of cholesterol from midlife through late life according to apolipoprotein E allele status. *Int. J. Environ. Res. Public Health* 11:10663–93
- Duewell P, Kono H, Rayner KJ, Sirois CM, Vladimer G, et al. 2010. NLRP3 inflammasomes are required for atherogenesis and activated by cholesterol crystals. *Nature* 464:1357–61
- Edler MK, Mhatre-Winters I, Richardson JR. 2021. Microglia in aging and Alzheimer's disease: a comparative species review. *Cells* 10:1138
- Estfanous S, Daily KP, Eltobgy M, Deems NP, Anne MNK, et al. 2021. Elevated expression of MiR-17 in microglia of Alzheimer's disease patients abrogates autophagy-mediated amyloid- $\beta$  degradation. *Front. Immunol.* 12:705581
- Fernandez CG, Hamby ME, McReynolds ML, Ray WJ. 2019. The role of APOE4 in disrupting the homeostatic functions of astrocytes and microglia in aging and Alzheimer's disease. *Front. Aging Neurosci.* 11:14
- Ferris HA, Perry RJ, Moreira GV, Shulman GI, Horton JD, Kahn CR. 2017. Loss of astrocyte cholesterol synthesis disrupts neuronal function and alters whole-body metabolism. *PNAS* 114:1189–94
- Franklin RJM, Frisen J, Lyons DA. 2021. Revisiting remyelination: towards a consensus on the regeneration of CNS myelin. *Semin. Cell Dev. Biol.* 116:3–9
- Fuentes D, Fernández N, García Y, García T, Morales AR, Menéndez R. 2018. Age-related changes in the behavior of apolipoprotein E knockout mice. *Behav. Sci.* 8:33
- Fünfschilling U, Jockusch WJ, Sivakumar N, Möbius W, Corthals K, et al. 2012. Critical time window of neuronal cholesterol synthesis during neurite outgrowth. *J. Neurosci.* 32:7632–45
- GBD 2016 Neurol. Collab. 2019. Global, regional, and national burden of neurological disorders, 1990–2016: a systematic analysis for the Global Burden of Disease Study 2016. *Lancet Neurol.* 18:459–80
- Gordon SM, Li H, Zhu X, Shah AS, Lu LJ, Davidson WS. 2015. A comparison of the mouse and human lipoproteome: suitability of the mouse model for studies of human lipoproteins. *J. Proteome Res.* 14:2686–95
- Gouna G, Klose C, Bosch-Queralt M, Liu L, Gokce O, et al. 2021. TREM2-dependent lipid droplet biogenesis in phagocytes is required for remyelination. *J. Exp. Med.* 218:e20210227
- Grant WB. 2014. Trends in diet and Alzheimer's disease during the nutrition transition in Japan and developing countries. *J. Alzheimer's Dis.* 38:611–20
- Grimm MO, Mett J, Grimm HS, Hartmann T. 2017. APP function and lipids: a bidirectional link. *Front. Mol. Neurosci.* 10:63
- Groenen AG, Halmos B, Tall AR, Westerterp M. 2021. Cholesterol efflux pathways, inflammation, and atherosclerosis. *Crit. Rev. Biochem. Mol. Biol.* 56:426–39
- Gu Q, Paulose-Ram R, Burt VL, Kit BK. 2014. Prescription cholesterol-lowering medication use in adults aged 40 and over: United States, 2003–2012. *NCHS Data Brief* 177:1–8
- Habib N, McCabe C, Medina S, Varshavsky M, Kitsberg D, et al. 2020. Disease-associated astrocytes in Alzheimer's disease and aging. *Nat. Neurosci.* 23:701–6
- Heinke P, Rost F, Rode J, Trus P, Simonova I, et al. 2022. Diploid hepatocytes drive physiological liver renewal in adult humans. *Cell Syst.* 13:499–507.e12
- Henningfield CM, Arreola MA, Soni N, Spangenberg EE, Green KN. 2022. Microglia-specific ApoE knock-out does not alter Alzheimer's disease plaque pathogenesis or gene expression. *Glia* 70:287–302
- Herink M, Ito MK. 2000. Medication induced changes in lipid and lipoproteins. In *Endotext*, ed. KR Feingold, B Anawalt, A Boyce, G Chrousos, WW de Herder, et al. South Dartmouth, MA: Endotext
- Höglinger D, Burgoyne T, Sanchez-Heras E, Hartwig P, Colaco A, et al. 2019. NPC1 regulates ER contacts with endocytic organelles to mediate cholesterol egress. *Nat. Commun.* 10:4276
- Hubler Z, Allimuthu D, Bederman I, Elitt MS, Madhavan M, et al. 2018. Accumulation of 8,9-unsaturated sterols drives oligodendrocyte formation and remyelination. *Nature* 560:372–76
- Hubler Z, Friedrich RM, Sax JL, Allimuthu D, Gao F, et al. 2021. Modulation of lanosterol synthase drives 24,25-epoxysterol synthesis and oligodendrocyte formation. *Cell Chem. Biol.* 28:866–75.e5
- Hutter-Paier B, Huttunen HJ, Puglielli L, Eckman CB, Kim DY, et al. 2004. The ACAT inhibitor CP-113,818 markedly reduces amyloid pathology in a mouse model of Alzheimer's disease. *Neuron* 44:227–38
- Ikonen E, Zhou X. 2021. Cholesterol transport between cellular membranes: a balancing act between interconnected lipid fluxes. *Dev. Cell* 56:1430–36



- Jahn T, Clark C, Kerksiek A, Lewczuk P, Lutjohann D, Popp J. 2021. Cholesterol metabolites and plant sterols in cerebrospinal fluid are associated with Alzheimer's cerebral pathology and clinical disease progression. *J. Steroid Biochem. Mol. Biol.* 205:105785
- Jang J, Park S, Jin Hur H, Cho HJ, Hwang I, et al. 2016. 25-Hydroxycholesterol contributes to cerebral inflammation of X-linked adrenoleukodystrophy through activation of the NLRP3 inflammasome. *Nat. Commun.* 7:13129
- Janičko M, Veselý E, Leško D, Jarčuška P. 2013. Serum cholesterol is a significant and independent mortality predictor in liver cirrhosis patients. *Ann. Hepatol.* 12:413–19
- Johnson ECB, Carter EK, Dammer EB, Duong DM, Gerasimov ES, et al. 2022. Large-scale deep multi-layer analysis of Alzheimer's disease brain reveals strong proteomic disease-related changes not observed at the RNA level. *Nat. Neurosci.* 25:213–25
- Johnson ECB, Dammer EB, Duong DM, Ping L, Zhou M, et al. 2020. Large-scale proteomic analysis of Alzheimer's disease brain and cerebrospinal fluid reveals early changes in energy metabolism associated with microglia and astrocyte activation. *Nat. Med.* 26:769–80
- Koch S, Donarski N, Goetze K, Kreckel M, Stuerenburg H-J, et al. 2001. Characterization of four lipoprotein classes in human cerebrospinal fluid. *J. Lipid Res.* 42:1143–51
- Konings SC, Torres-Garcia L, Martinsson I, Gouras GK. 2021. Astrocytic and neuronal apolipoprotein E isoforms differentially affect neuronal excitability. *Front. Neurosci.* 15:734001
- Lak B, Li S, Belevich I, Sree S, Butkovic R, et al. 2021. Specific subdomain localization of ER resident proteins and membrane contact sites resolved by electron microscopy. *Eur. J. Cell Biol.* 100:151180
- Lane CA, Barnes J, Nicholas JM, Baker JW, Sudre CH, et al. 2021. Investigating the relationship between BMI across adulthood and late life brain pathologies. *Alzheimer's Res. Ther.* 13:91
- Lane-Donovan C, Wong WM, Durakoglugil MS, Wasser CR, Jiang S, et al. 2016. Genetic restoration of plasma ApoE improves cognition and partially restores synaptic defects in ApoE-deficient mice. *J. Neurosci.* 36:10141–50
- Langness VF, van der Kant R, Das U, Wang L, Chaves RDS, Goldstein LSB. 2021. Cholesterol-lowering drugs reduce APP processing to A $\beta$  by inducing APP dimerization. *Mol. Biol. Cell* 32:247–59
- Lee CYD, Daggett A, Gu X, Jiang L-L, Langfelder P, et al. 2018. Elevated TREM2 gene dosage reprograms microglia responsiveness and ameliorates pathological phenotypes in Alzheimer's disease models. *Neuron* 97:1032–48.e5
- Lee E, Jung Y-J, Park YR, Lim S, Choi Y-J, et al. 2022. A distinct astrocyte subtype in the aging mouse brain characterized by impaired protein homeostasis. *Nat. Aging* 2:726–41
- Li Z-Y, Chen L-H, Zhao X-Y, Chen H, Sun Y-Y, et al. 2021. Clemastine attenuates AD-like pathology in an AD model mouse via enhancing mTOR-mediated autophagy. *Exp. Neurol.* 342:113742
- Liu GY, Sabatini DM. 2020. mTOR at the nexus of nutrition, growth, ageing and disease. *Nat. Rev. Mol. Cell Biol.* 21:183–203
- Liu Y, Thalamuthu A, Mather KA, Crawford J, Ulanova M, et al. 2021. Plasma lipidome is dysregulated in Alzheimer's disease and is associated with disease risk genes. *Transl. Psychiatry* 11:344
- Lu A, Hsieh F, Sharma BR, Vaughn SR, Enrich C, Pfeffer SR. 2021. CRISPR screens for lipid regulators reveal a role for ER-bound SNX13 in lysosomal cholesterol export. *J. Cell Biol.* 221:e202105060
- Lund EG, Guileyardo JM, Russell DW. 1999. cDNA cloning of cholesterol 24-hydroxylase, a mediator of cholesterol homeostasis in the brain. *PNAS* 96:7238–43
- Luo J, Jiang LY, Yang H, Song BL. 2019. Intracellular cholesterol transport by sterol transfer proteins at membrane contact sites. *Trends Biochem. Sci.* 44:273–92
- Lv YB, Yin ZX, Chei CL, Qian HZ, Kraus VB, et al. 2015. Low-density lipoprotein cholesterol was inversely associated with 3-year all-cause mortality among Chinese oldest old: data from the Chinese Longitudinal Healthy Longevity Survey. *Atherosclerosis* 239:137–42
- Mahan TE, Wang C, Bao X, Choudhury A, Ulrich JD, Holtzman DM. 2022. Selective reduction of astrocyte apoE3 and apoE4 strongly reduces A $\beta$  accumulation and plaque-related pathology in a mouse model of amyloidosis. *Mol. Neurodegener.* 17:13
- Maihofer AX, Shadyab AH, Wild RA, LaCroix AZ. 2020. Associations between serum levels of cholesterol and survival to age 90 in postmenopausal women. *J. Am. Geriatr. Soc.* 68:288–96

- Marschallinger J, Iram T, Zardeneta M, Lee SE, Lehallier B, et al. 2020. Lipid-droplet-accumulating microglia represent a dysfunctional and proinflammatory state in the aging brain. *Nat. Neurosci.* 23:194–208
- Martin MG, Perga S, Trovò L, Rasola A, Holm P, et al. 2008. Cholesterol loss enhances TrkB signaling in hippocampal neurons aging in vitro. *Mol. Biol. Cell* 19:2101–12
- Mast N, Saadane A, Valencia-Olvera A, Constans J, Maxfield E, et al. 2017. Cholesterol-metabolizing enzyme cytochrome P450 46A1 as a pharmacologic target for Alzheimer's disease. *Neuropharmacology* 123:465–76
- Miron VE, Rajasekharan S, Jarjour AA, Zamvil SS, Kennedy TE, Antel JP. 2007. Simvastatin regulates oligodendroglial process dynamics and survival. *Glia* 55:130–43
- Morrison JH, Baxter MG. 2012. The ageing cortical synapse: hallmarks and implications for cognitive decline. *Nat. Rev. Neurosci.* 13:240–50
- Muse ED, Yu S, Edillor CR, Tao J, Spann NJ, et al. 2018. Cell-specific discrimination of desmosterol and desmosterol mimetics confers selective regulation of LXR and SREBP in macrophages. *PNAS* 115:E4680–89
- Nugent AA, Lin K, van Lengerich B, Lianoglou S, Przybyla L, et al. 2020. TREM2 regulates microglial cholesterol metabolism upon chronic phagocytic challenge. *Neuron* 105:837–54.e9
- Ohara T, Hata J, Yoshida D, Mukai N, Nagata M, et al. 2017. Trends in dementia prevalence, incidence, and survival rate in a Japanese community. *Neurology* 88:1925–32
- Orre M, Kamphuis W, Osborn LM, Melief J, Kooijman L, et al. 2014. Acute isolation and transcriptome characterization of cortical astrocytes and microglia from young and aged mice. *Neurobiol. Aging* 35:1–14
- Peters A, Sethares C, Luebke JI. 2008a. Synapses are lost during aging in the primate prefrontal cortex. *Neuroscience* 152:970–81
- Peters A, Verderosa A, Sethares C. 2008b. The neuroglial population in the primary visual cortex of the aging rhesus monkey. *Glia* 56:1151–61
- Pingale TD, Gupta GL. 2021. Novel therapeutic approaches for Parkinson's disease by targeting brain cholesterol homeostasis. *J. Pharm. Pharmacol.* 73:862–73
- Provenzano F, Perez MJ, Deleidi M. 2021. Redefining microglial identity in health and disease at single-cell resolution. *Trends Mol. Med.* 27:47–59
- Reu P, Khosravi A, Bernard S, Mold JE, Salehpour M, et al. 2017. The lifespan and turnover of microglia in the human brain. *Cell Rep.* 20:779–84
- Rohatgi A, Westerterp M, von Eckardstein A, Remaley A, Rye KA. 2021. HDL in the 21st century: a multifunctional roadmap for future HDL research. *Circulation* 143:2293–309
- Roser M, Ortiz-Ospina E, Ritchie H. 2013. Life expectancy. *Our World in Data*. <https://ourworldindata.org/life-expectancy>
- Roser M, Ritchie H, Spooner F. 2021. Burden of disease. *Our World in Data*. <https://ourworldindata.org/burden-of-disease>
- Safaiyan S, Besson-Girard S, Kaya T, Cantuti-Castelvetri L, Liu L, et al. 2021. White matter aging drives microglial diversity. *Neuron* 109:1100–17.e10
- Safaiyan S, Kannaiyan N, Snaidero N, Brioschi S, Biber K, et al. 2016. Age-related myelin degradation burdens the clearance function of microglia during aging. *Nat. Neurosci.* 19:995–98
- Saher G, Brügger B, Lappe-Siefke C, Möbius W, Tozawa R, et al. 2005. High cholesterol level is essential for myelin membrane growth. *Nat. Neurosci.* 8:468–75
- Saher G, Stumpf SK. 2015. Cholesterol in myelin biogenesis and hypomyelinating disorders. *Biochim. Biophys. Acta* 1851:1083–94
- Schupf N, Costa R, Luchsinger J, Tang M-X, Lee JH, Mayeux R. 2005. Relationship between plasma lipids and all-cause mortality in nondemented elderly. *J. Am. Geriatrics Soc.* 53:219–26
- Shapira KE, Shapira G, Schmukler E, Pasmanik-Chor M, Shomron N, et al. 2021. Autophagy is induced and modulated by cholesterol depletion through transcription of autophagy-related genes and attenuation of flux. *Cell Death Discov.* 7:320
- Silbernagel G, Fauler G, Hoffmann MM, Lütjohann D, Winkelmann BR, et al. 2010. The associations of cholesterol metabolism and plasma plant sterols with all-cause and cardiovascular mortality. *J. Lipid Res.* 51:2384–93
- Song R, Pan K-Y, Xu H, Qi X, Buchman AS, et al. 2021. Association of cardiovascular risk burden with risk of dementia and brain pathologies: a population-based cohort study. *Alzheimer's Dement.* 17:1914–22

- Spann NJ, Garmire LX, McDonald JG, Myers DS, Milne SB, et al. 2012. Regulated accumulation of desmosterol integrates macrophage lipid metabolism and inflammatory responses. *Cell* 151:138–52
- Stommel A, Berlet HH, Debuch H. 1989. Buoyant density and lipid composition of purified myelin of aging human brain. *Mech. Ageing Dev.* 48:1–14
- Sun Z, Wang ZT, Sun FR, Shen XN, Xu W, et al. 2020. Late-life obesity is a protective factor for prodromal Alzheimer's disease: a longitudinal study. *Aging* 12:2005–17
- Thelen KM, Falkai P, Bayer TA, Lutjohann D. 2006. Cholesterol synthesis rate in human hippocampus declines with aging. *Neurosci. Lett.* 403:15–19
- Thompson PD, Panza G, Zaleski A, Taylor B. 2016. Statin-associated side effects. *J. Am. Coll. Cardiol.* 67:2395–410
- Tilvis RS, Valvanne JN, Strandberg TE, Miettinen TA. 2011. Prognostic significance of serum cholesterol, lathosterol, and sitosterol in old age: a 17-year population study. *Ann. Med.* 43:292–301
- Trinh MN, Brown MS, Goldstein JL, Han J, Vale G, et al. 2020. Last step in the path of LDL cholesterol from lysosome to plasma membrane to ER is governed by phosphatidylserine. *PNAS* 117:18521–29
- Tuck BJ, Miller LVC, Katsinelos T, Smith AE, Wilson EL, et al. 2022. Cholesterol determines the cytosolic entry and seeded aggregation of tau. *Cell Rep.* 39:110776
- van Deijk AF, Camargo N, Timmerman J, Heistek T, Brouwers JF, et al. 2017. Astrocyte lipid metabolism is critical for synapse development and function in vivo. *Glia* 65:670–82
- van der Kant R, Langness VF, Herrera CM, Williams DA, Fong LK, et al. 2019. Cholesterol metabolism is a druggable axis that independently regulates Tau and amyloid- $\beta$  in iPSC-derived Alzheimer's disease neurons. *Cell Stem Cell* 24:363–75.e9
- Vance JE. 2014. MAM (mitochondria-associated membranes) in mammalian cells: lipids and beyond. *Biochim. Biophys. Acta* 1841:595–609
- Vanmierlo T, Lütjohann D, Mulder M. 2011. Brain cholesterol in normal and pathological aging. *OCL* 18:214–17
- Varma VR, Lüleci HB, Oommen AM, Varma S, Blackshear CT, et al. 2021. Abnormal brain cholesterol homeostasis in Alzheimer's disease—a targeted metabolomic and transcriptomic study. *NPJ Aging Mech. Dis.* 7:11
- Vermunt L, Sikkes SAM, van den Hout A, Handels R, Bos I, et al. 2019. Duration of preclinical, prodromal, and dementia stages of Alzheimer's disease in relation to age, sex, and APOE genotype. *Alzheimer's Dement.* 15:888–98
- Wang C, Xiong M, Gratuze M, Bao X, Shi Y, et al. 2021. Selective removal of astrocytic APOE4 strongly protects against tau-mediated neurodegeneration and decreases synaptic phagocytosis by microglia. *Neuron* 109:1657–74.e7
- Wang H, Eckel RH. 2014. What are lipoproteins doing in the brain? *Trends Endocrinol. Metab.* 25:8–14
- Wang H, Kulas JA, Wang C, Holtzman DM, Ferris HA, Hansen SB. 2021. Regulation of beta-amyloid production in neurons by astrocyte-derived cholesterol. *PNAS* 118:e2102191118
- Wang Y, Yutuc E, Griffiths WJ. 2021. Neuro-oxysterols and neuro-sterols as ligands to nuclear receptors, GPCRs, ligand-gated ion channels and other protein receptors. *Br. J. Pharmacol.* 178:3176–93
- Ward NC, Watts GF, Eckel RH. 2019. Statin toxicity. *Circ. Res.* 124:328–50
- Williams DM, Finan C, Schmidt AF, Burgess S, Hingorani AD. 2020. Lipid lowering and Alzheimer disease risk: a Mendelian randomization study. *Ann. Neurol.* 87:30–39
- Wilson S, Pietsch M, Cordero-Grande L, Price AN, Hutter J, et al. 2021. Development of human white matter pathways in utero over the second and third trimester. *PNAS* 118:e2023598118
- Xie C, Lund EG, Turley SD, Russell DW, Dietschy JM. 2003. Quantitation of two pathways for cholesterol excretion from the brain in normal mice and mice with neurodegeneration. *J. Lipid Res.* 44:1780–89
- Xu M-X, Liu C, He Y-M, Yang X-J, Zhao X. 2017. Long-term statin therapy could be efficacious in reducing the lipoprotein (a) levels in patients with coronary artery disease modified by some traditional risk factors. *J. Thorac. Dis.* 9:1322–32
- Yang AC, Vest RT, Kern F, Lee DP, Agam M, et al. 2022. A human brain vascular atlas reveals diverse mediators of Alzheimer's risk. *Nature* 603:885–92
- Yeung MS, Zdunek S, Bergmann O, Bernard S, Salehpour M, et al. 2014. Dynamics of oligodendrocyte generation and myelination in the human brain. *Cell* 159:766–74

- Zarrouk A, Vejux A, Mackrill J, O'Callaghan Y, Hammami M, et al. 2014. Involvement of oxysterols in age-related diseases and ageing processes. *Ageing Res. Rev.* 18:148–62
- Zeng Y, Feng Q, Gu D, Vaupel JW. 2017. Demographics, phenotypic health characteristics and genetic analysis of centenarians in China. *Mech. Ageing Dev.* 165:86–97
- Zhang Q, Sidorenko J, Couvy-Duchesne B, Marioni RE, Wright MJ, et al. 2020a. Risk prediction of late-onset Alzheimer's disease implies an oligogenic architecture. *Nat. Commun.* 11:4799
- Zhang X, Wang R, Hu D, Sun X, Fujioka H, et al. 2020b. Oligodendroglial glycolytic stress triggers inflammasome activation and neuropathology in Alzheimer's disease. *Sci. Adv.* 6:eabb8680
- Zhou C, Lei H, Chen Y, Liu Q, Li LC, et al. 2013. Enhanced SCAP glycosylation by inflammation induces macrophage foam cell formation. *PLOS ONE* 8:e75650
- Zimetti F, Freitas WM, Campos AM, Daher M, Adorni MP, et al. 2018. Cholesterol efflux capacity does not associate with coronary calcium, plaque vulnerability, and telomere length in healthy octogenarians. *J. Lipid Res.* 59:714–21

# Contents

Therapeutic Potential of PTBP1 Inhibition, If Any, Is Not Attributed to Glia-to-Neuron Conversion <i>Lei-Lei Wang and Chun-Li Zhang</i> .....	1
How Flies See Motion <i>Alexander Borst and Lukas N. Groschner</i> .....	17
Meningeal Mechanisms and the Migraine Connection <i>Dan Levy and Michael A. Moskowitz</i> .....	39
Cholesterol Metabolism in Aging and Age-Related Disorders <i>Gesine Saber</i> .....	59
Spinal Interneurons: Diversity and Connectivity in Motor Control <i>Mohini Sengupta and Martha W. Bagnall</i> .....	79
Astrocyte Endfeet in Brain Function and Pathology: Open Questions <i>Blanca Díaz-Castro, Stefanie Robel, and Anusha Mishra</i> .....	101
Circadian Rhythms and Astrocytes: The Good, the Bad, and the Ugly <i>Michael H. Hastings, Marco Brancaccio, Maria F. Gonzalez-Aponte, and Erik D. Herzog</i> .....	123
Therapeutic Potential of PTB Inhibition Through Converting Glial Cells to Neurons in the Brain <i>Xiang-Dong Fu and William C. Mobley</i> .....	145
How Instructions, Learning, and Expectations Shape Pain and Neurobiological Responses <i>Lauren Y. Atlas</i> .....	167
Cognition from the Body-Brain Partnership: Exaptation of Memory <i>György Buzsáki and David Tingley</i> .....	191
Neural Circuits for Emotion <i>Meryl Malezieux, Alexandra S. Klein, and Nadine Gogolla</i> .....	211
The Computational and Neural Bases of Context-Dependent Learning <i>James B. Heald, Daniel M. Wolpert, and Máté Lengyel</i> .....	233

Integration of Feedforward and Feedback Information Streams in the Modular Architecture of Mouse Visual Cortex <i>Andreas Burkhalter, Rinaldo D. D'Souza, Weiqing Ji, and Andrew M. Meier</i> .....	259
How Do You Build a Cognitive Map? The Development of Circuits and Computations for the Representation of Space in the Brain <i>Flavio Donato, Anja Xu Schwartzlose, and Renan Augusto Viana Mendes</i> .....	281
Cortical Integration of Vestibular and Visual Cues for Navigation, Visual Processing, and Perception <i>Sepideh Keshavarzi, Mateo Velez-Fort, and Troy W. Margrie</i> .....	301
Neural Control of Sexually Dimorphic Social Behavior: Connecting Development to Adulthood <i>Margaret M. McCarthy</i> .....	321
Deep Brain Stimulation for Obsessive-Compulsive Disorder and Depression <i>Sameer A. Sheth and Helen S. Mayberg</i> .....	341
Striosomes and Matrisomes: Scaffolds for Dynamic Coupling of Volition and Action <i>Ann M. Graybiel and Ayano Matsushima</i> .....	359
Specialized Networks for Social Cognition in the Primate Brain <i>Ben Deen, Caspar M. Schwiedrzik, Julia Sliwa, and Winrich A. Freiwald</i> .....	381
Neural Networks for Navigation: From Connections to Computations <i>Rachel I. Wilson</i> .....	403

## Indexes

Cumulative Index of Contributing Authors, Volumes 37–46 .....	425
---------------------------------------------------------------	-----

## Errata

An online log of corrections to *Annual Review of Neuroscience* articles may be found at <http://www.annualreviews.org/errata/neuro>