

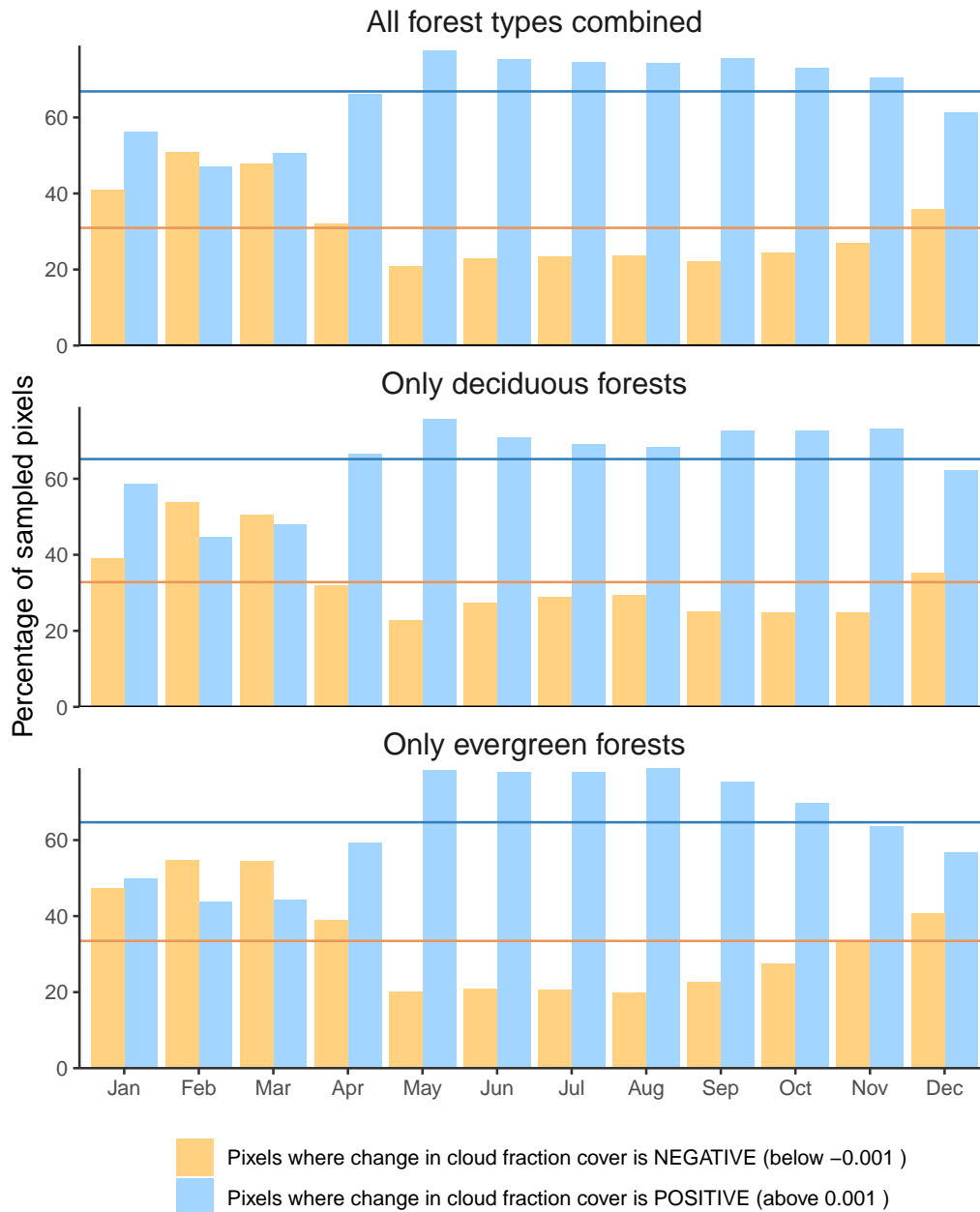
Widespread cloud enhancement adds further
value to the world's forests

June 8, 2021

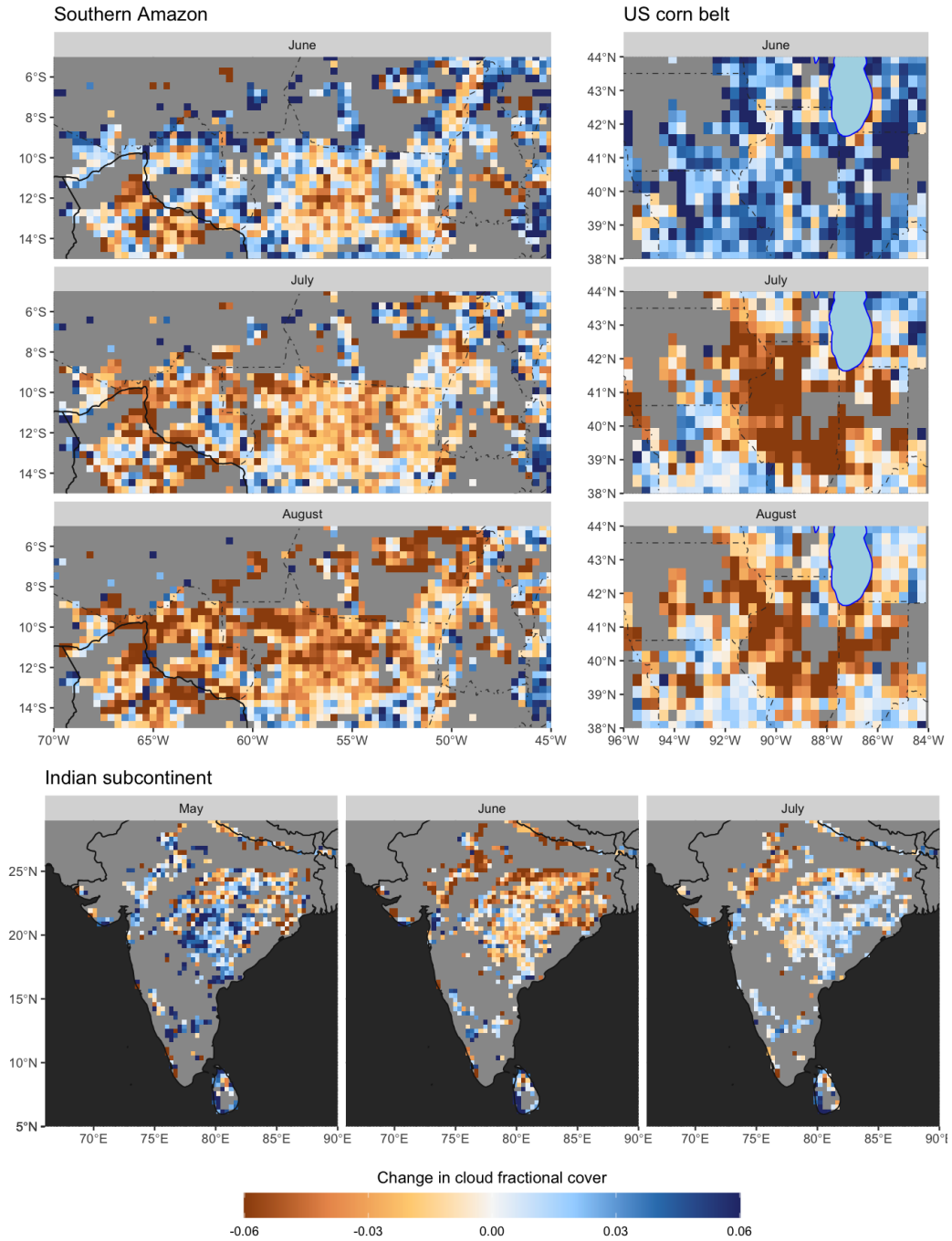
Supplementary Information

Supplementary Figures 1 to 3

Extent of pixels showing a given effect on CFrC
 Considering potential afforestation over short vegetation



Supplementary Fig. 2 Seasonal patterns of the percentage of sampled pixels where forest has a positive (blue) or negative (yellow) influence on the cloud fractional cover (CFrC). For the southern hemisphere, the months have been cycled by 6 months. The horizontal lines represent the annual average. This is the same as Figure 2 in the main manuscript but here the separation by forest types is provided.



Supplementary Fig. 3 Detailed monthly maps of changes in cloud fraction cover (CFrC) for some of the regions highlighted in Fig. 1 in the main text and in Supplementary Fig. 1. Data are at the aggregated spatial resolution of 0.35 following the de-correlation operation.