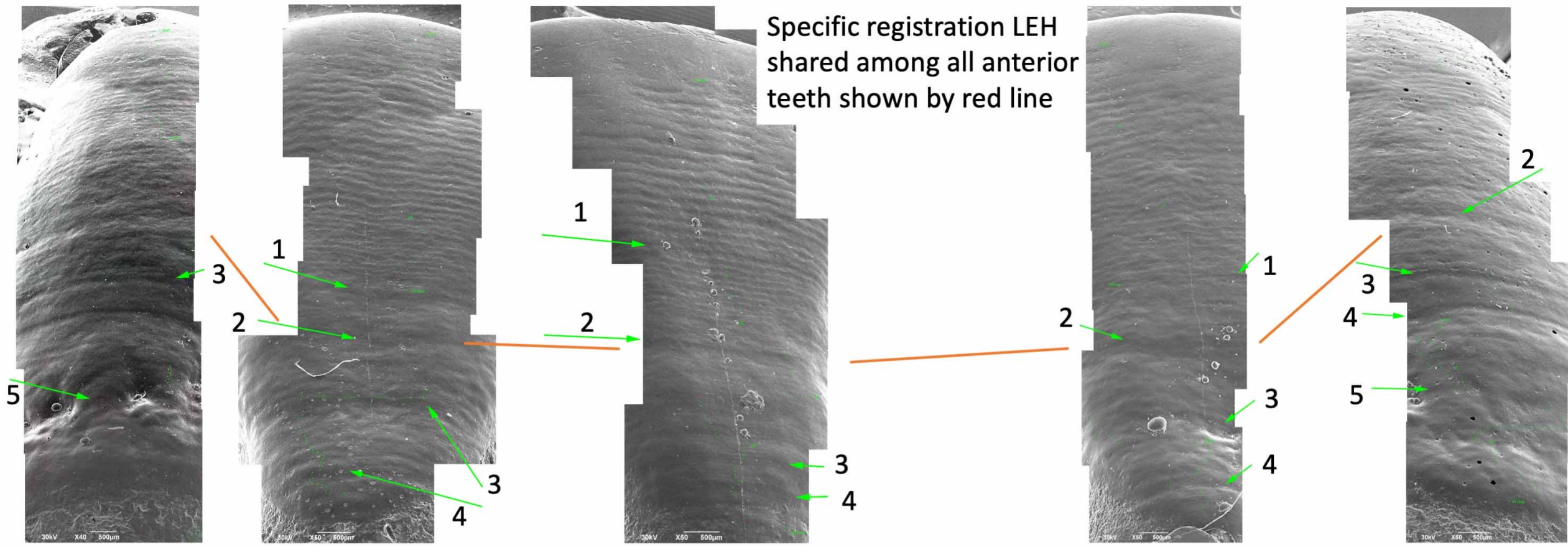


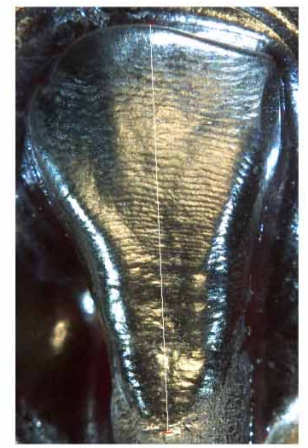
Scanning electron micrographs of Dinaledi teeth with linear enamel hypoplasia (green lines)

Images are organized by probable associations
shown by (Delezene et al. 2023);

Specific registration LEH shared among all anterior teeth shown by red line



LoRC 0377-1014

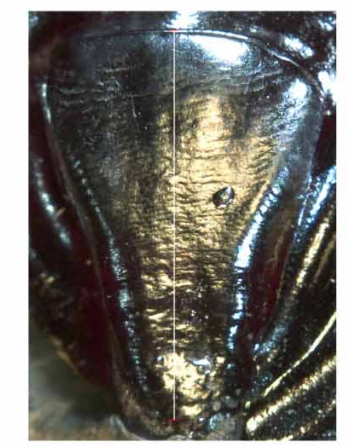


LoRI2 1005C



LoRI1 1005B

Association 2

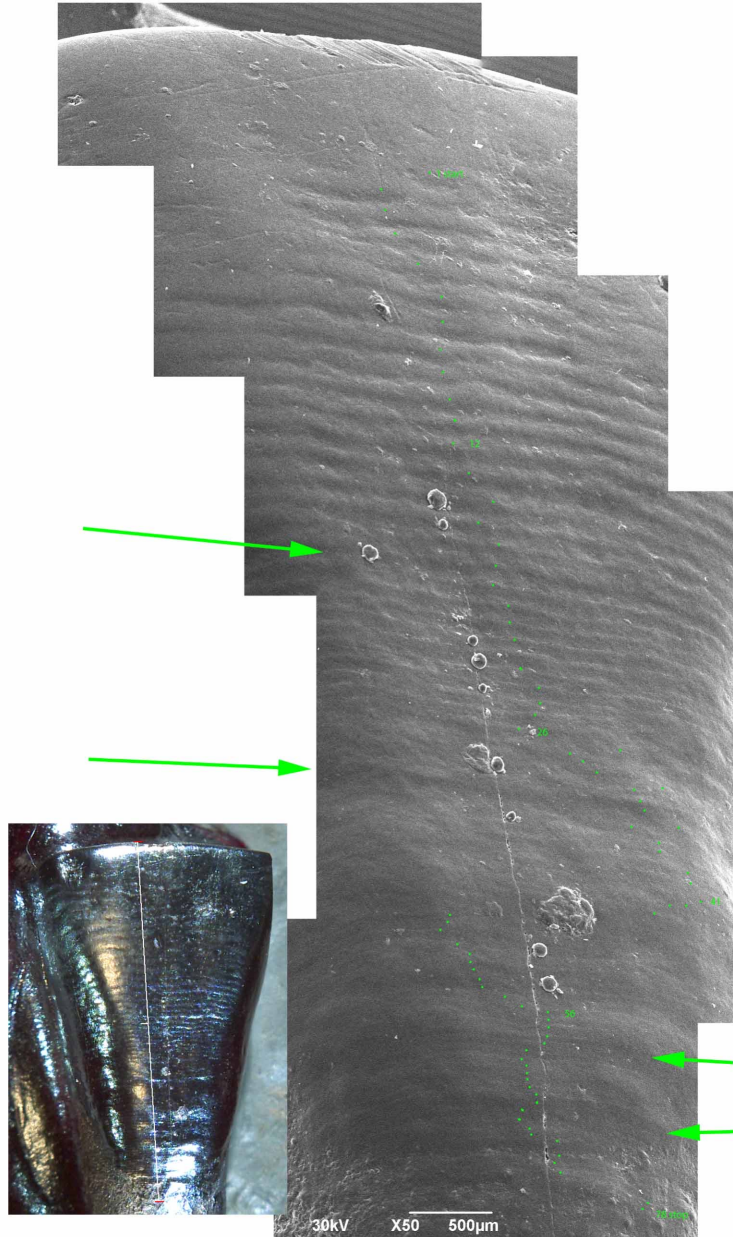


LoLI2 0998

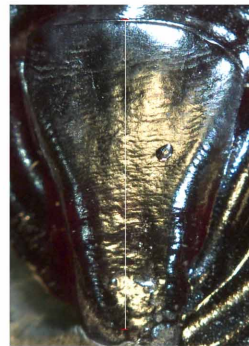
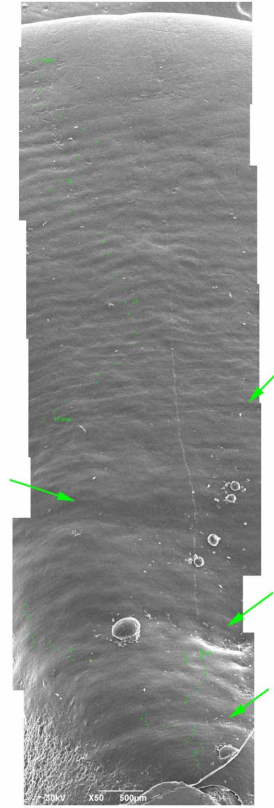


LoLC 1076

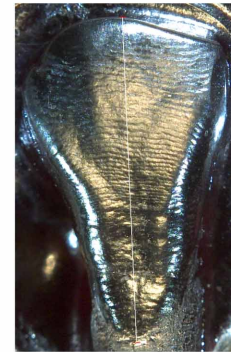
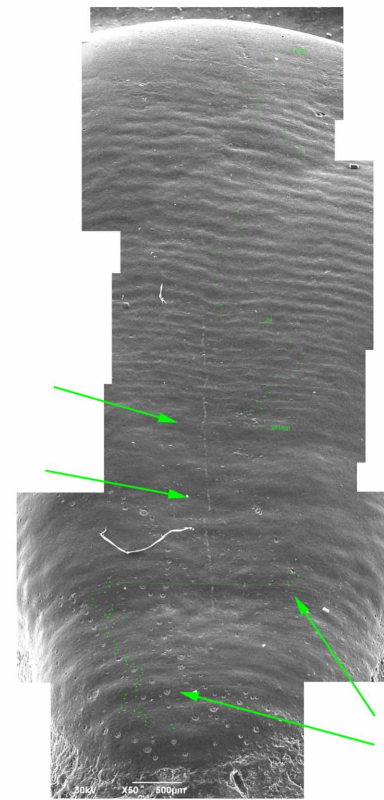
Association 2
1005B LoRI1
SEM44



Association 2
0998 LoLI2
SEM41

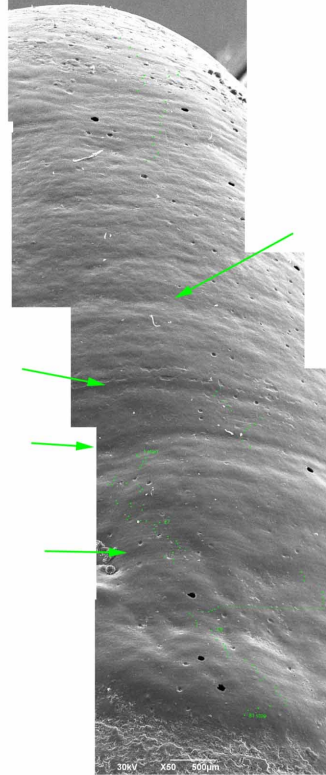


Association 2
1005C LoRI2
SEM43

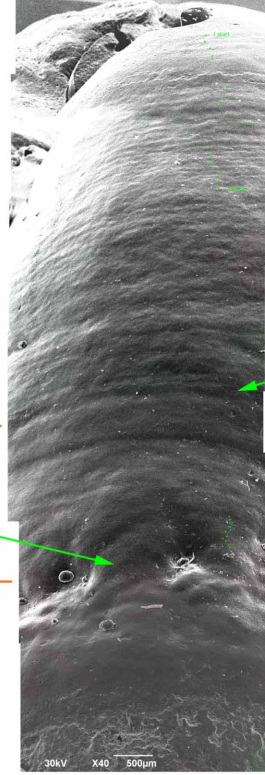


Indicated LEH in both teeth deemed homologous

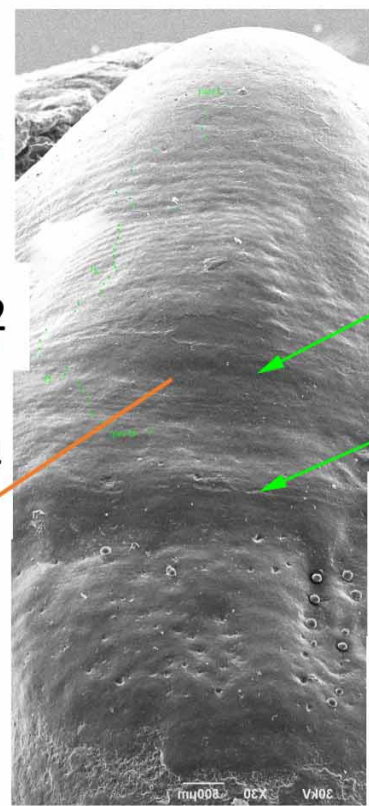
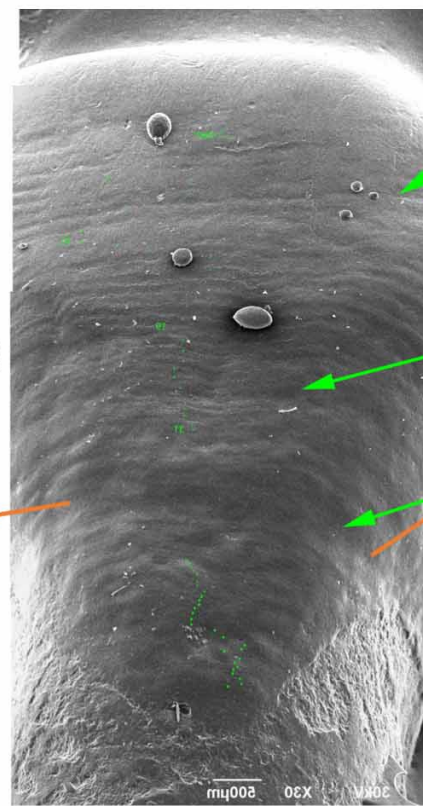
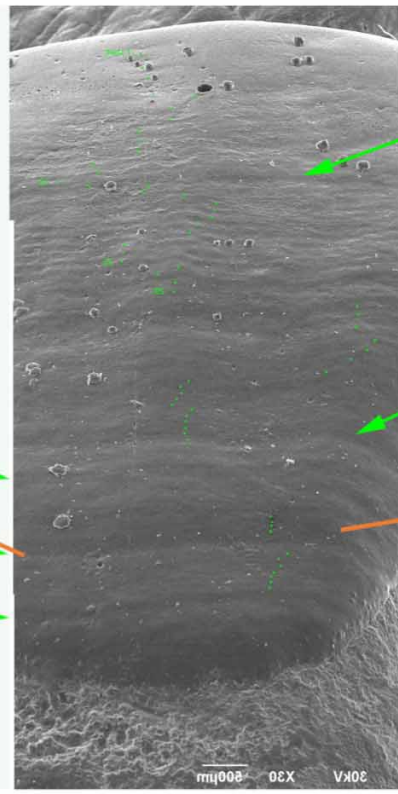
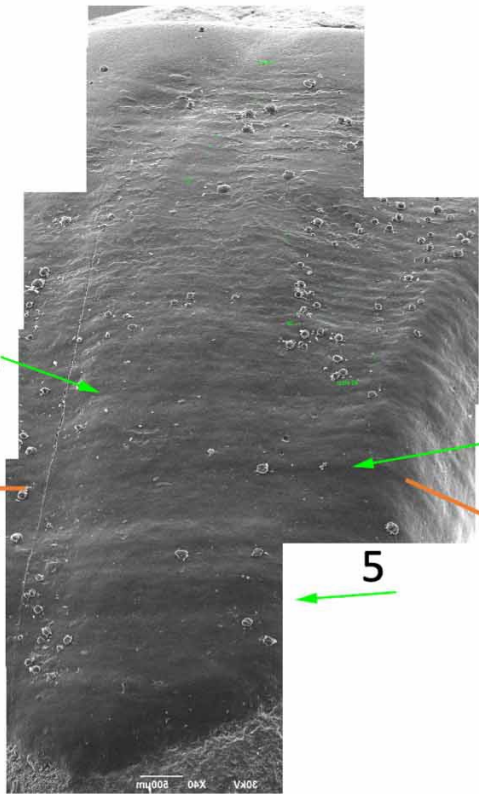
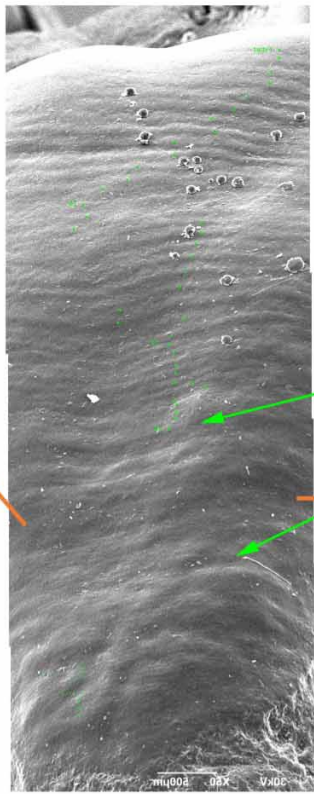
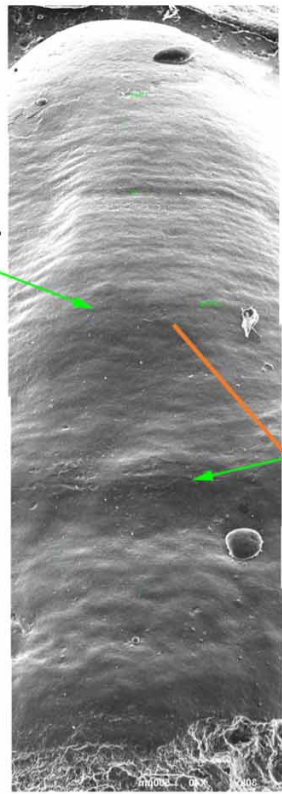
Association 2
1076 LoLC
SEM47



Association 2
0377 LoRC
SEM27



Homologized LEH shown in red;



URC 0816

URI2 0709

URI1 1012

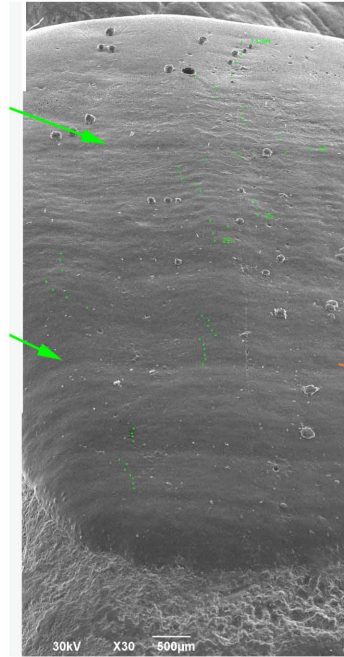
ULI1 0931

ULI2 0932

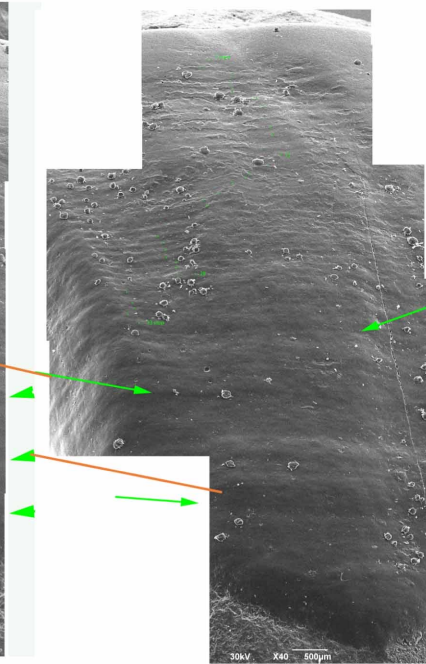
ULC 0706

Association 3 Specific registration LEH shared among all anterior teeth shown by red line

Association 3
931 ULI1
SEM21

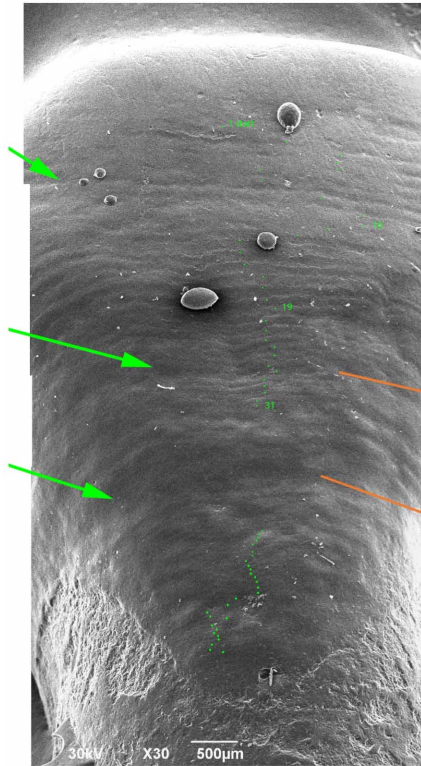


Association 3
1012 URI1
SEM45

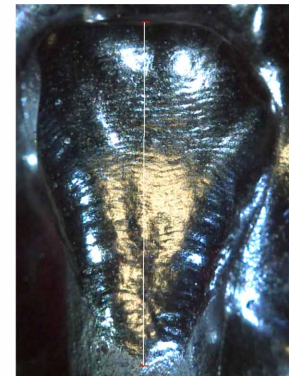
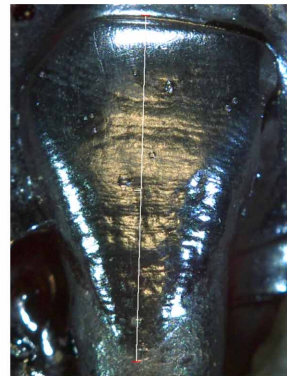
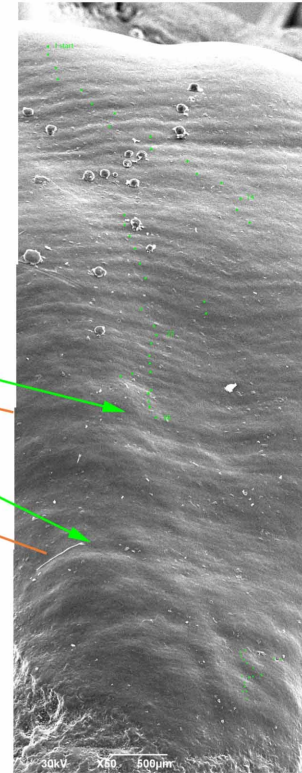


Homologized LEH shown in red

Association 3
932 ULI2
SEM32

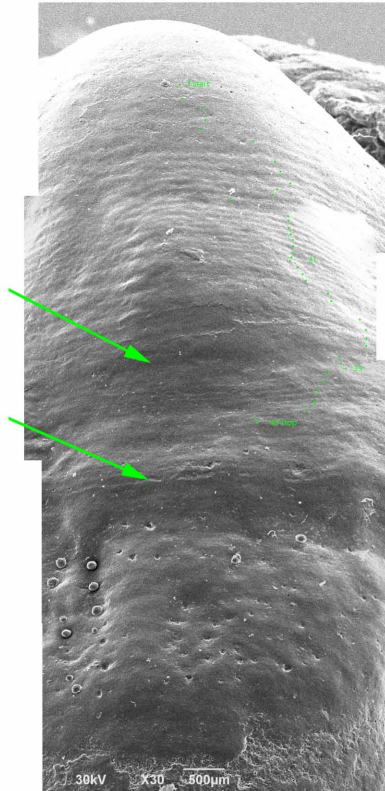


Association 3
709 URI2
SEM37

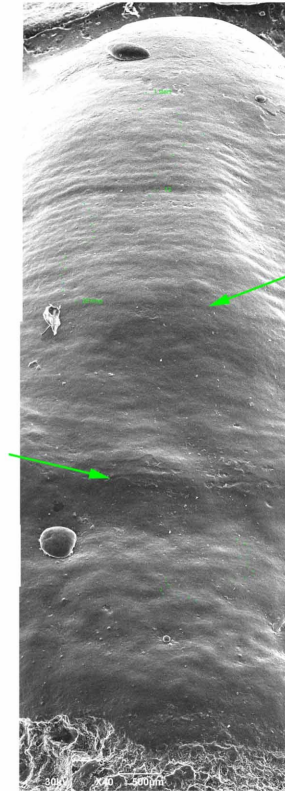


Homologized LEH shown in red

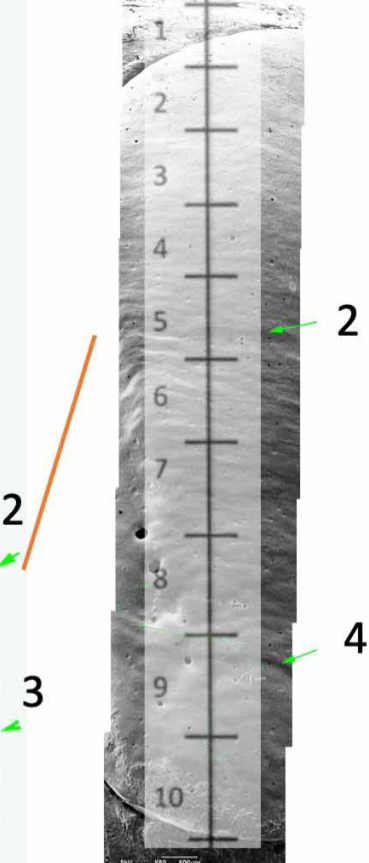
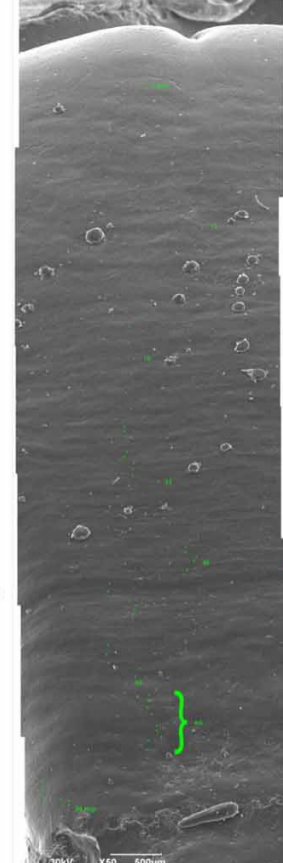
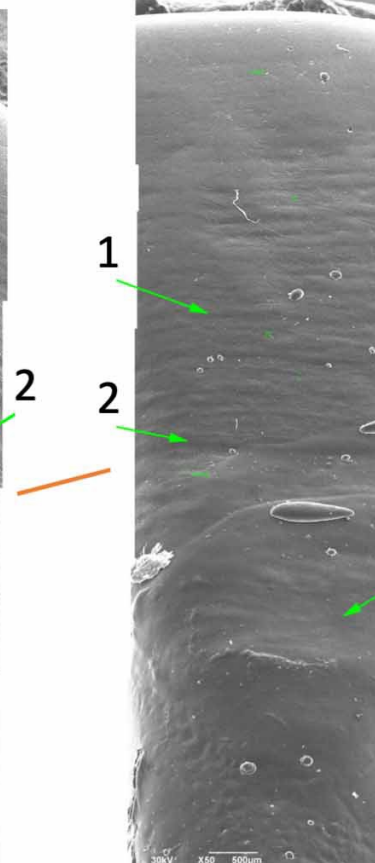
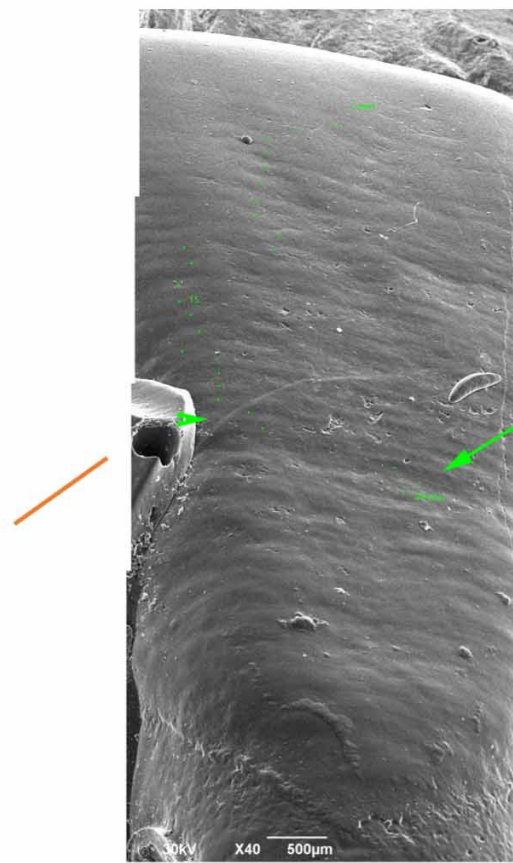
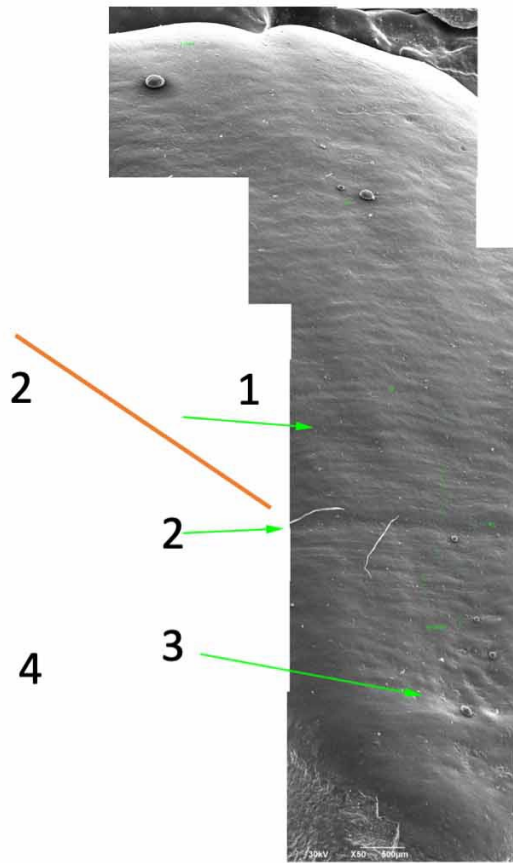
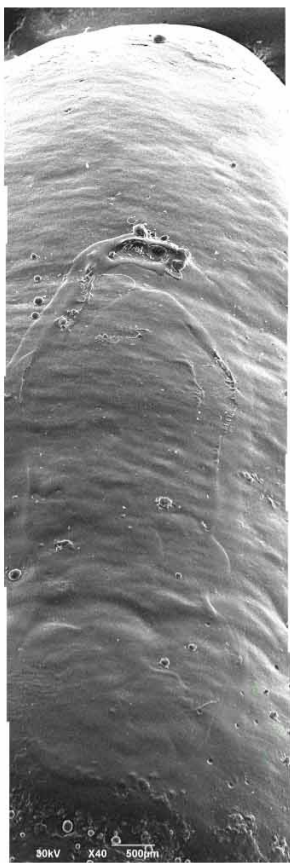
Association 3
0706 ULC
SEM31



Association 3
0816 URC
SEM33



Indicated LEH in both teeth deemed homologous



LoRC 0886



LoRI2 1075



LoRI1 1133



LoLI1 1132



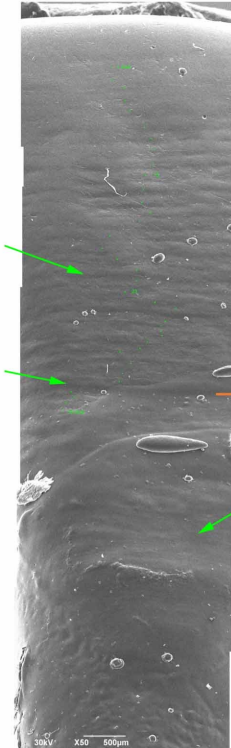
LoI2 1131



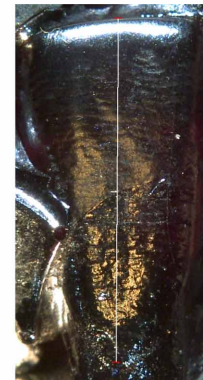
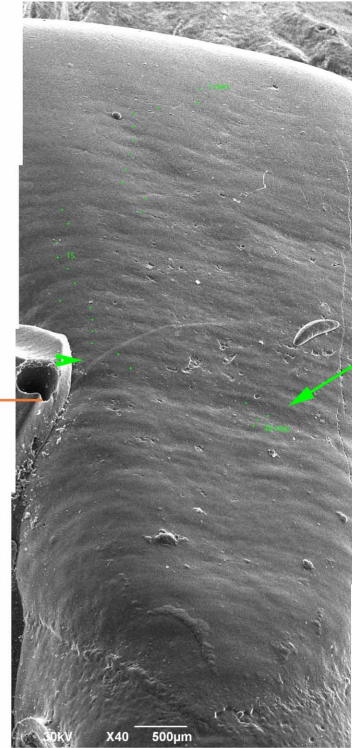
LoLC 1126

Association 4 Specific registration LEH shared among all anterior teeth shown by red line

Association 4
1132 LoLI1
SEM50



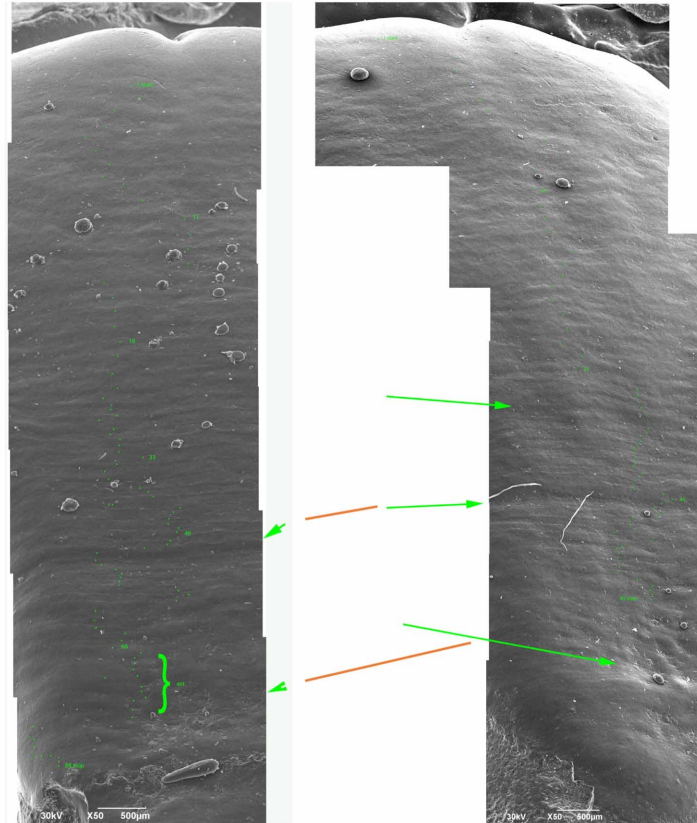
Association 4
1133 LoRI1
SEM48



Homologized LEH shown in red

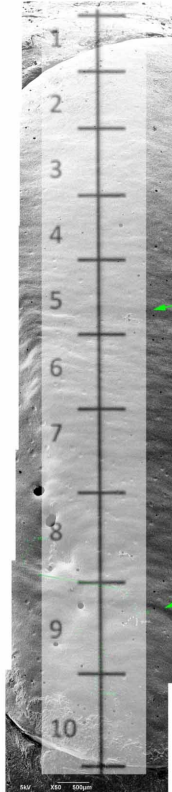
Association 4
1131 LoLI2
SEM24

Association 4
1075 LoRI2
SEM46

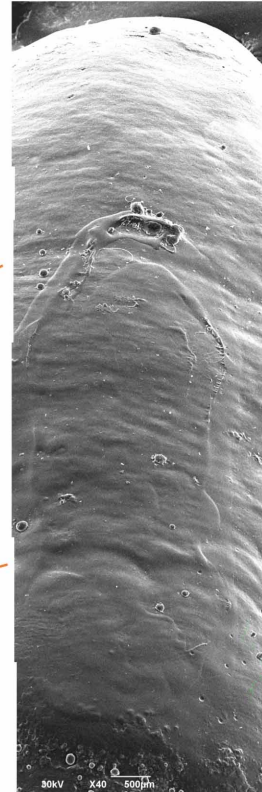


Homologized LEH shown in red

Association 4
1126 LoLC
SEM61

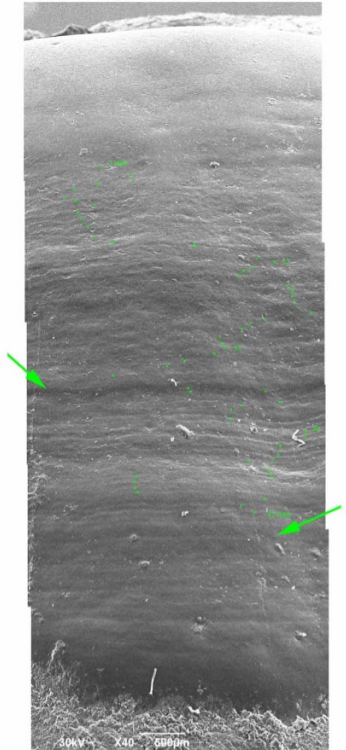


Association 4
0886 LoRC
SEM34

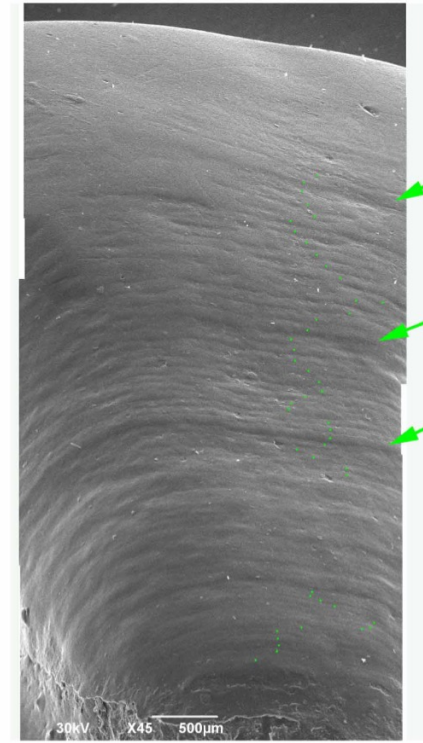


Indicated LEH in both teeth deemed homologous

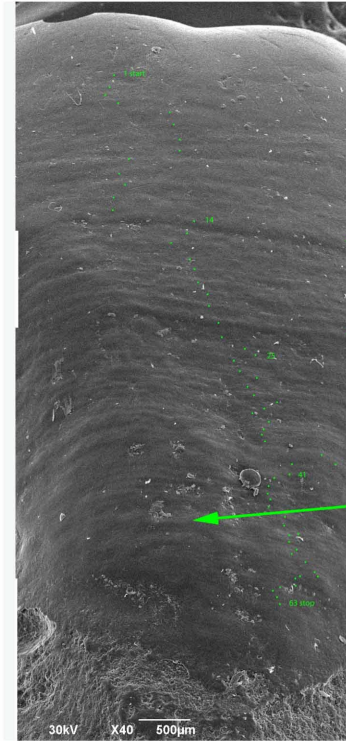
0038 URI1
SEM36



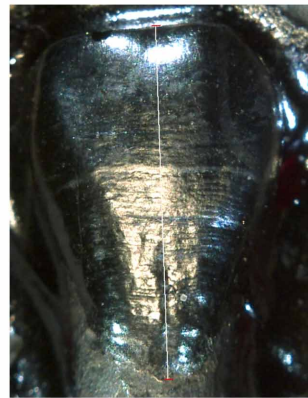
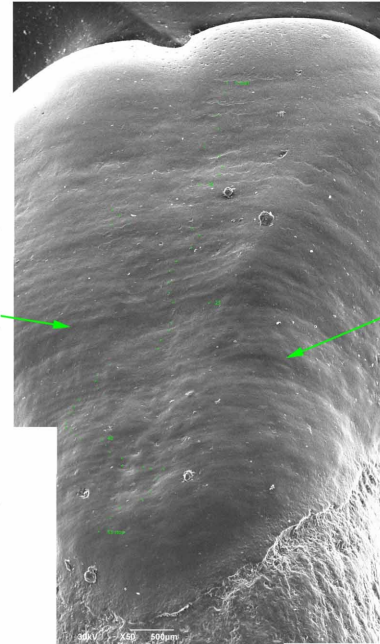
0039 LoRI1
SEM22



0073 URI2
SEM23



1588 ULI2
SEM52

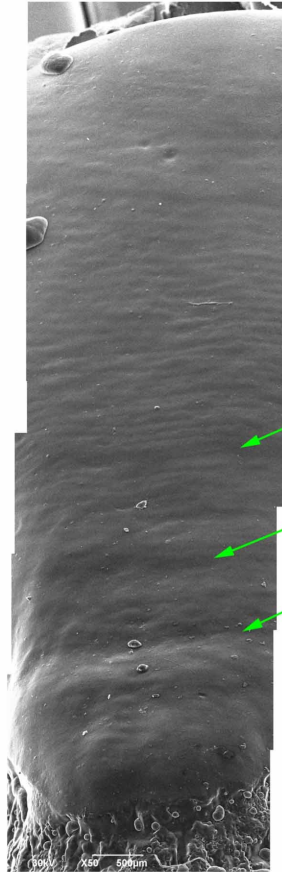


Possible antimeres

0335 LoRI2

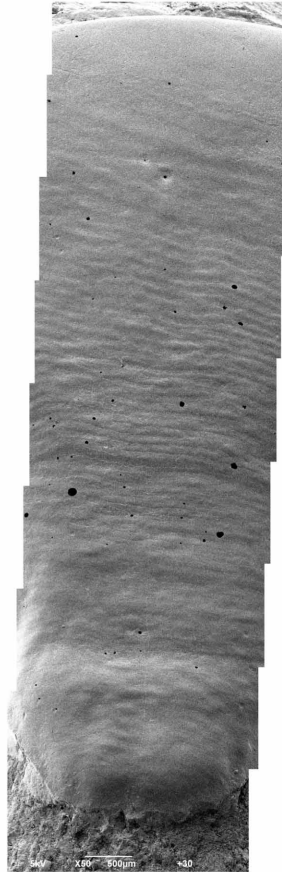
SEM49

Glue obscured surface



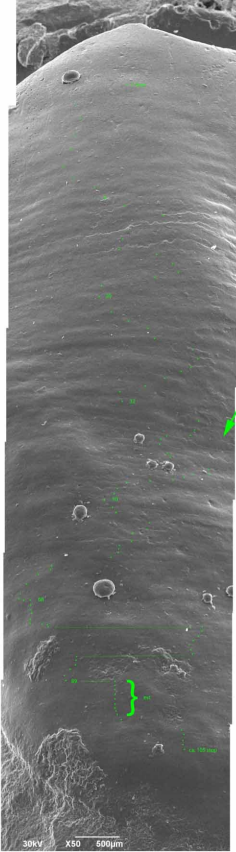
0335 early mold

SEM62



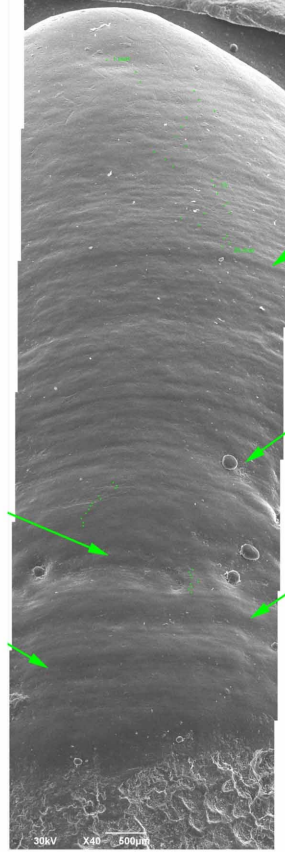
0337 URC

SEM25



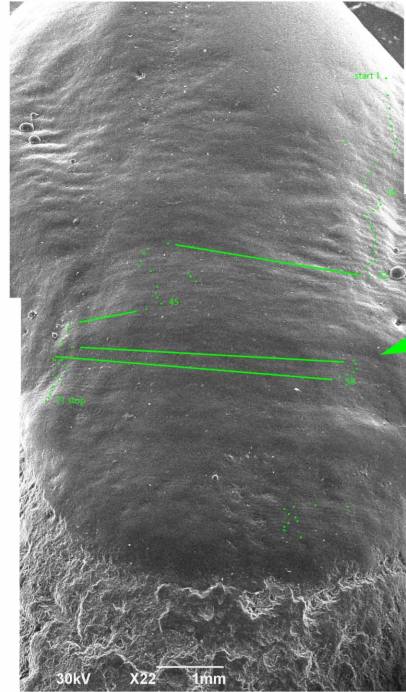
0339 LoRC

SEM26



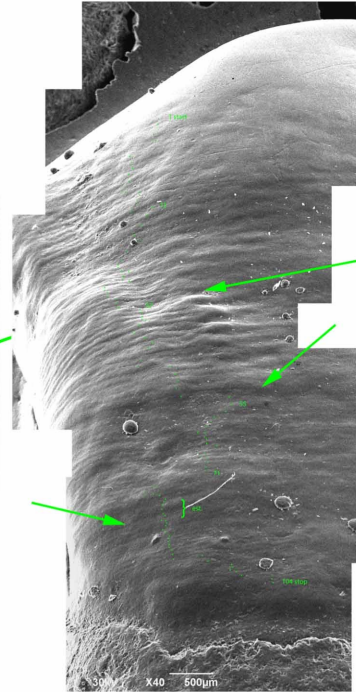
0412 ULC

SEM28



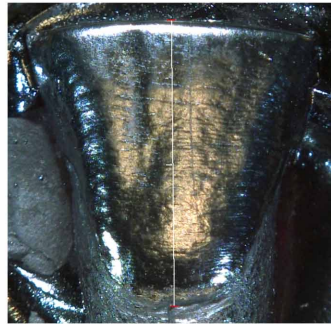
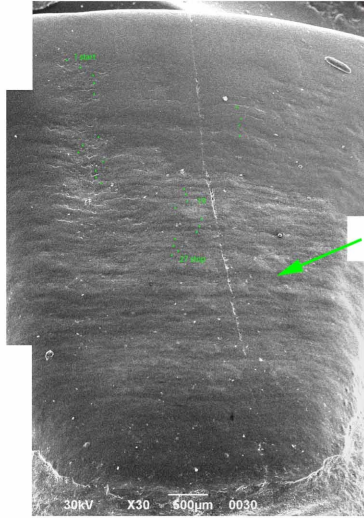
0908 URC

SEM35

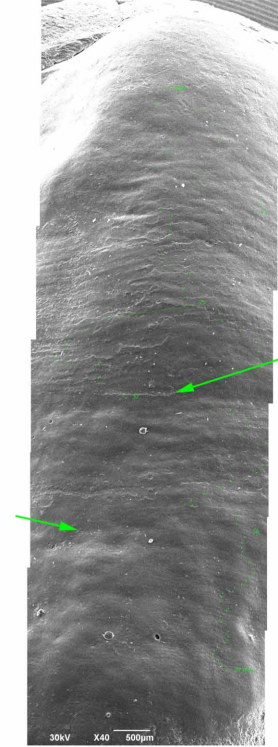


Possible antimeres

0591 ULI1
SEM30

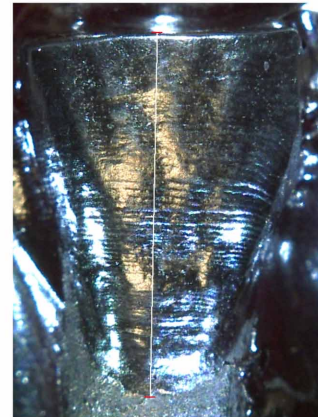
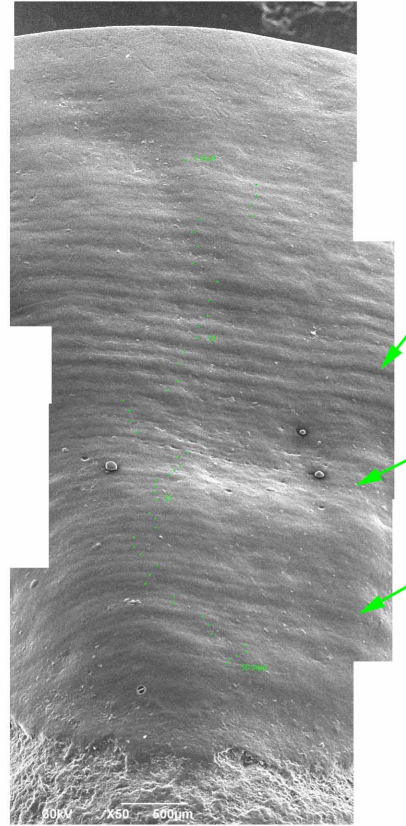


0501 ULC
SEM29



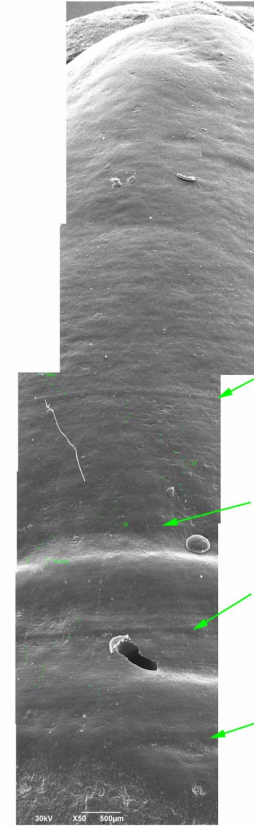
0952 ULI2

SEM38



0985 LoLC

SEM39



1556 LUC

SEM51

