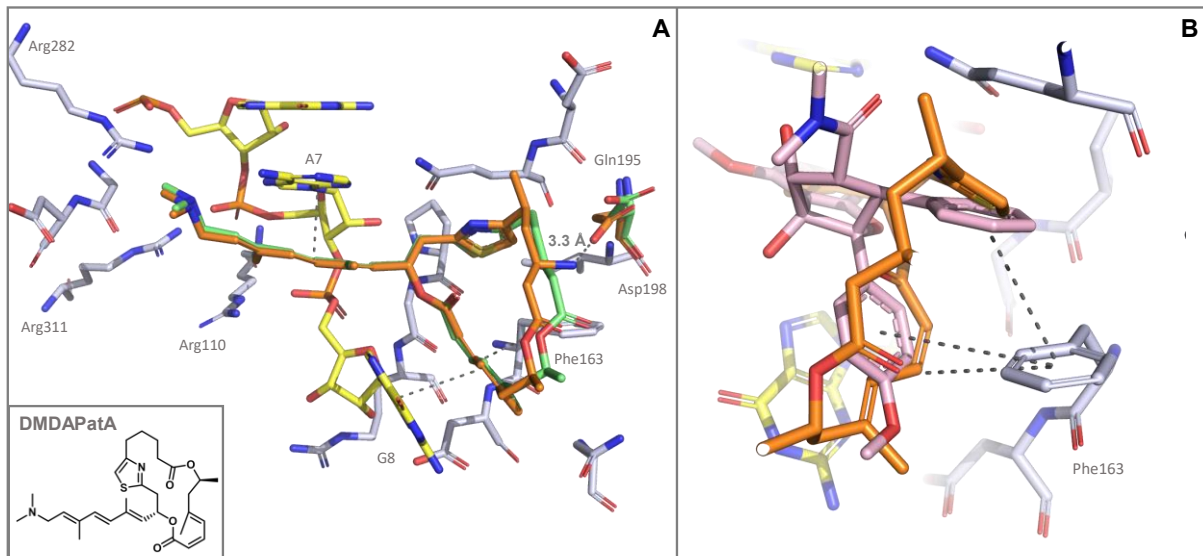
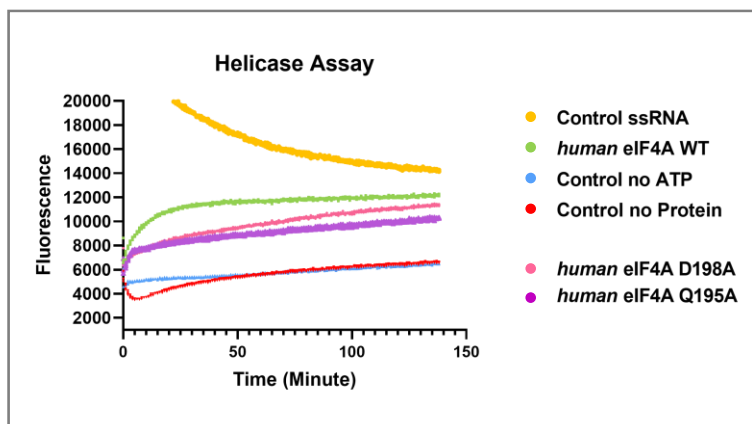


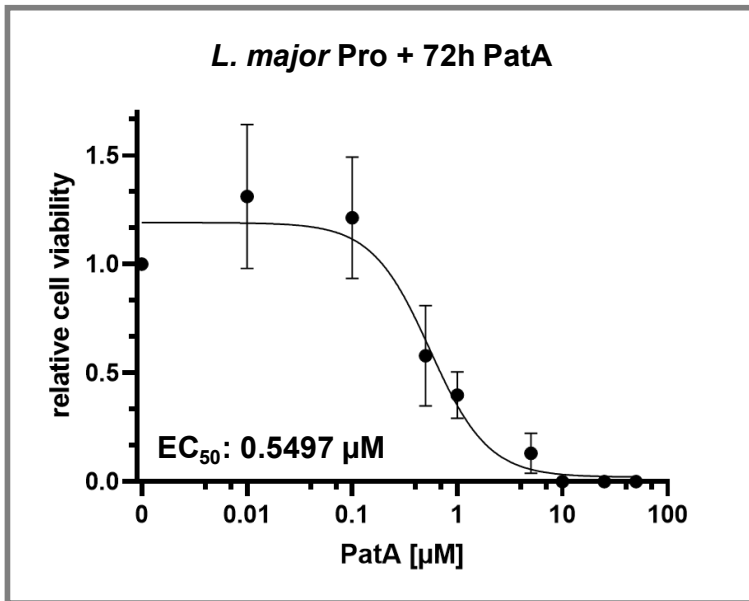
S1



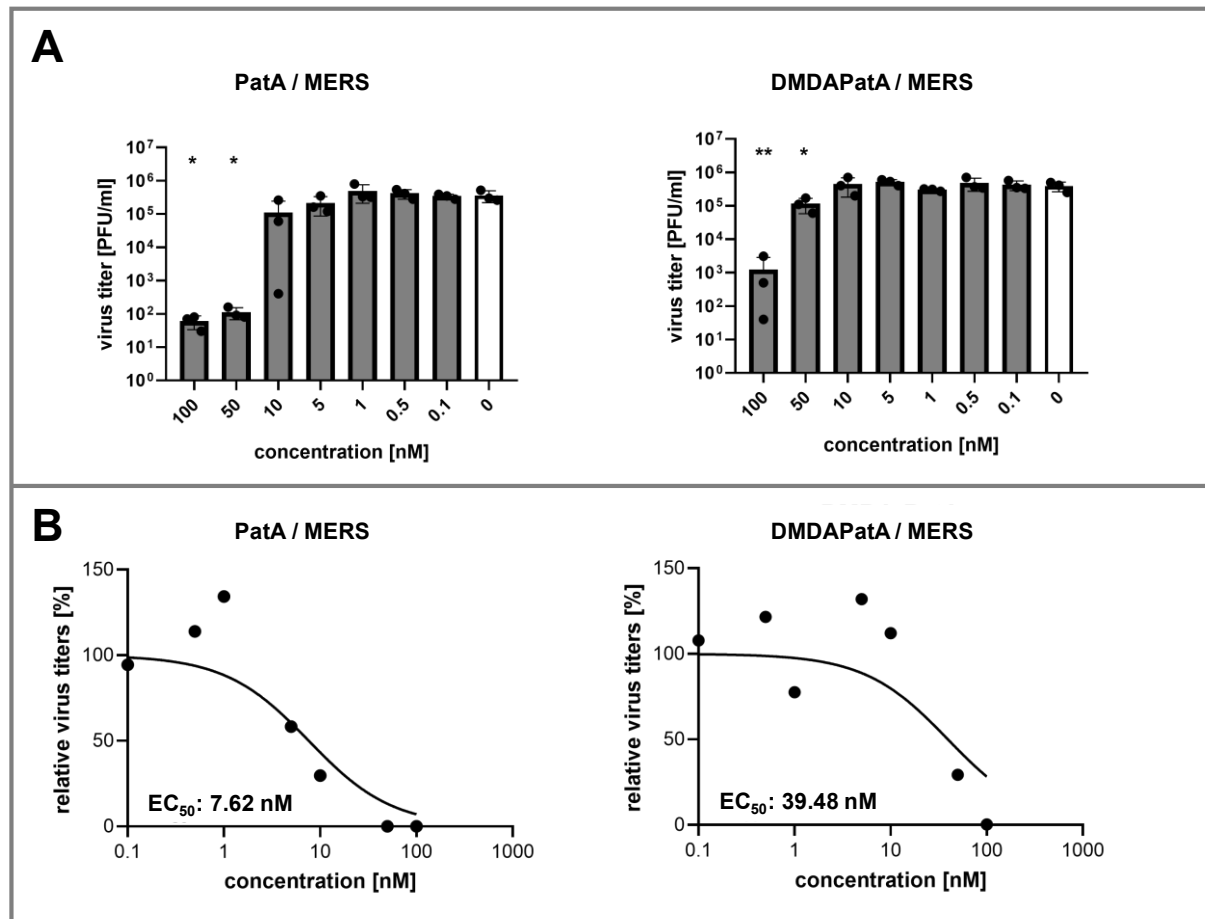
S2



S3



S4



S5

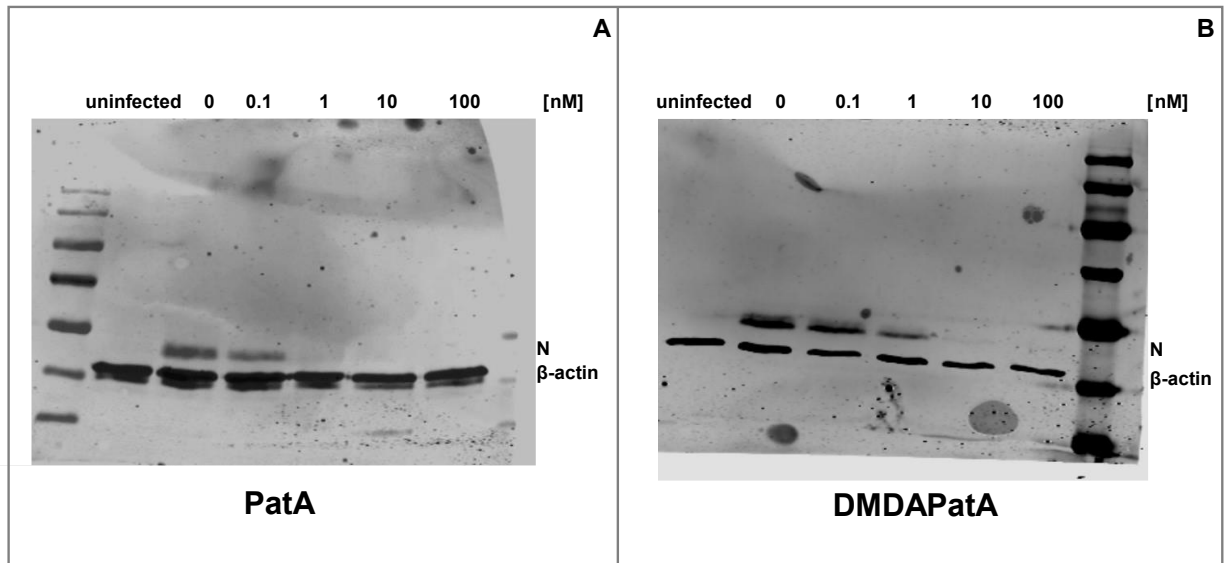


Table 1

eIF4A ₍₁₉₋₄₀₆₎ variant	PatA		DMDAPatA		Silvestrol ^[1]	
	ΔT_m [° C]	SEM [° C]	ΔT_m [° C]	SEM [° C]	ΔT_m [° C]	SEM [° C]
WT	11.3	± 0.1	10.1	± 0.1	9.7	± 0.1
F163C	9.2	± 0.1	7.3	± 0.1	5.9	± 0.1
F163D	8.5	± 0.3	5.0	± 0.1	4.0	± 0.1
F163E	9.9	± 0.0	5.1	± 0.1	7.2	± 0.1
F163G	8.8	± 0.1	4.6	± 0.2	5.0	± 0.2
F163H	9.5	± 0.1	6.0	± 0.1	6.4	± 0.1
F163I	8.4	± 0.1	4.6	± 0.1	3.1	± 0.1
F163L	9.1	± 0.1	5.3	± 0.1	2.1	± 0.2
F163N	9.3	± 0.1	6.3	± 0.1	6.2	± 0.1
F163Q	9.5	± 0.0	5.7	± 0.1	5.6	± 0.1
F163S	9.5	± 0.1	6.6	± 0.1	5.4	± 0.1
F163V	8.9	± 0.1	6.0	± 0.2	4.2	± 0.1
F163W	10.0	± 0.0	6.7	± 0.1	7.7	± 0.1
F163Y	9.6	± 0.1	8.2	± 0.1	8.9	± 0.1
I199V	10.6	± 0.1	8.7	± 0.2	9.3	± 0.1
F163Y-I199V	9.9	± 0.0	8.0	± 0.1	8.9	± 0.1
F163L-I199M	7.7	± 0.0	2.2	± 0.1	0.9	± 0.0
F163H-I199M	8.0	± 0.1	3.7	± 0.1	3.0	± 0.1
Q195A	9.2	± 0.2	7.9	± 0.1	8.7	± 0.2
D198A	7.0	± 0.1	7.0	± 0.1	6.0	± 0.1
R110A	1.7	± 0.1	-2.4	± 0.2	-1.0	± 0.2
R282A	2.2	± 0.1	1.4	± 0.1	5.0	± 0.1
R311A	-4.8	± 0.2	-4.9	± 0.2	-3.1	± 0.1
R110A-R282A-R311A	-6.1	± 0.2	-4.5	± 0.1	-3.3	± 0.3