

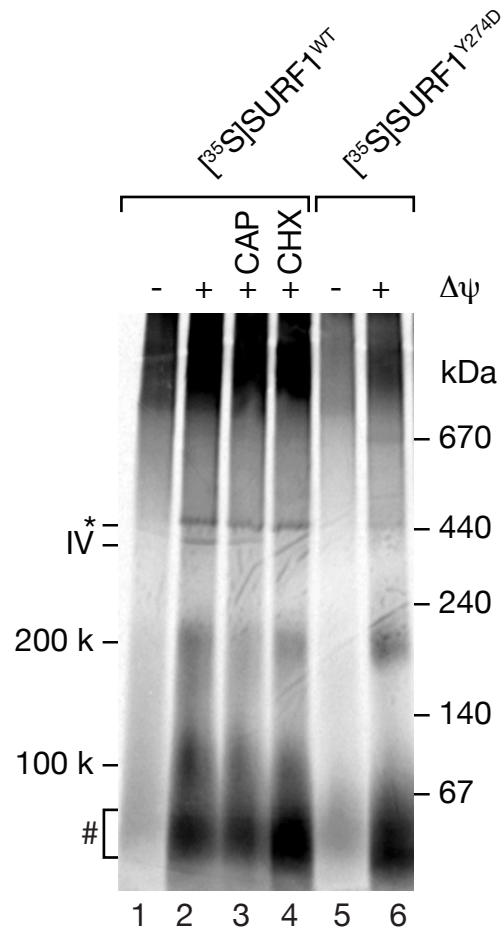
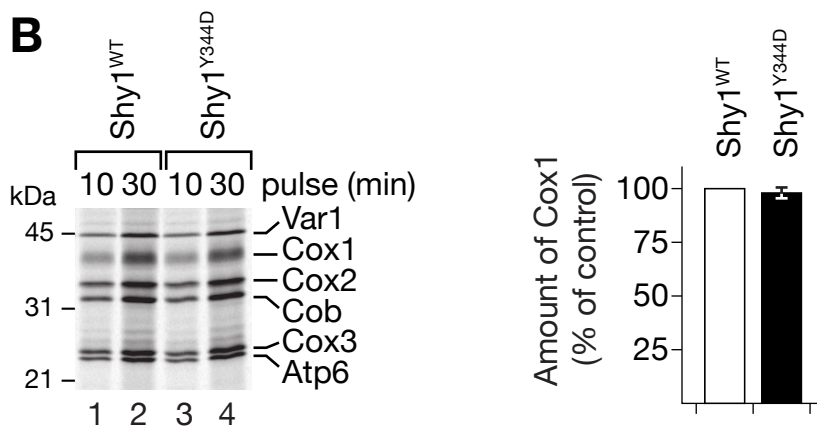
Supplementary Material

Supplementary Figure Legend

Figure S1.

(A) Radiolabeled SURF1^{WT} or SURF1^{Y274D} were imported into isolated mitochondria from HEK293T cells, which were treated with chloramphenicol (CAP) or cycloheximide (CHX) where indicated. Protein complexes were analyzed by BN-PAGE and digital autoradiography. Cross, unassembled SURF1; Asterisk, unspecific band.

(B) *In vivo* labeling of mitochondrial translation products at 19°C in *shy1Δ* cells carrying plasmids encoding for Shy1^{WT} or Shy1^{Y344D}. Cells were grown at 19°C and subjected to *in vivo* ³⁵S-labeling for indicated times. Samples were analyzed by SDS-PAGE and digital autoradiography. Signals of five independent experiments were quantified (ImageQuant TL, GE-Healthcare). Bars show mean ratios of Cox1/Cob after 30 min of labeling relative to wild-type (100%), (SEM, n=5).

A**B**

Reinhold et al. Figure S1