

Supplementary Material 1 Electron tomography of ribbon synapse of a prehearing IHC

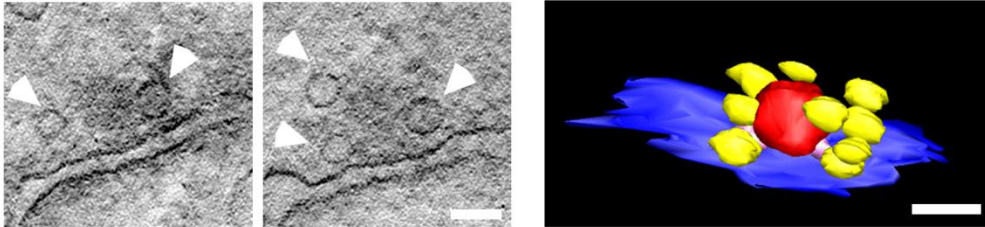


Figure S1. Electron tomography of ribbon synapse of a prehearing IHC.

Two example virtual sections of a tomogram (left) and corresponding model (right) of a pre-hearing p6 AZ. The small spherical ribbon (red) is attached via two rootlets (magenta) to the AZ membrane (blue). Nine synaptic vesicles (yellow, arrowheads) are found attached to the ribbon. Scale bars: 50 nm