

J | A | C | S

JOURNAL OF THE AMERICAN CHEMICAL SOCIETY

J. Am. Chem. Soc., 1998, 120(33), 8305-8314, DOI:[10.1021/ja981183g](https://doi.org/10.1021/ja981183g)

Terms & Conditions

Electronic Supporting Information files are available without a subscription to ACS Web Editions. The American Chemical Society holds a copyright ownership interest in any copyrightable Supporting Information. Files available from the ACS website may be downloaded for personal use only. Users are not otherwise permitted to reproduce, republish, redistribute, or sell any Supporting Information from the ACS website, either in whole or in part, in either machine-readable form or any other form without permission from the American Chemical Society. For permission to reproduce, republish and redistribute this material, requesters must process their own requests via the RightsLink permission system. Information about how to use the RightsLink permission system can be found at <http://pubs.acs.org/page/copyright/permissions.html>

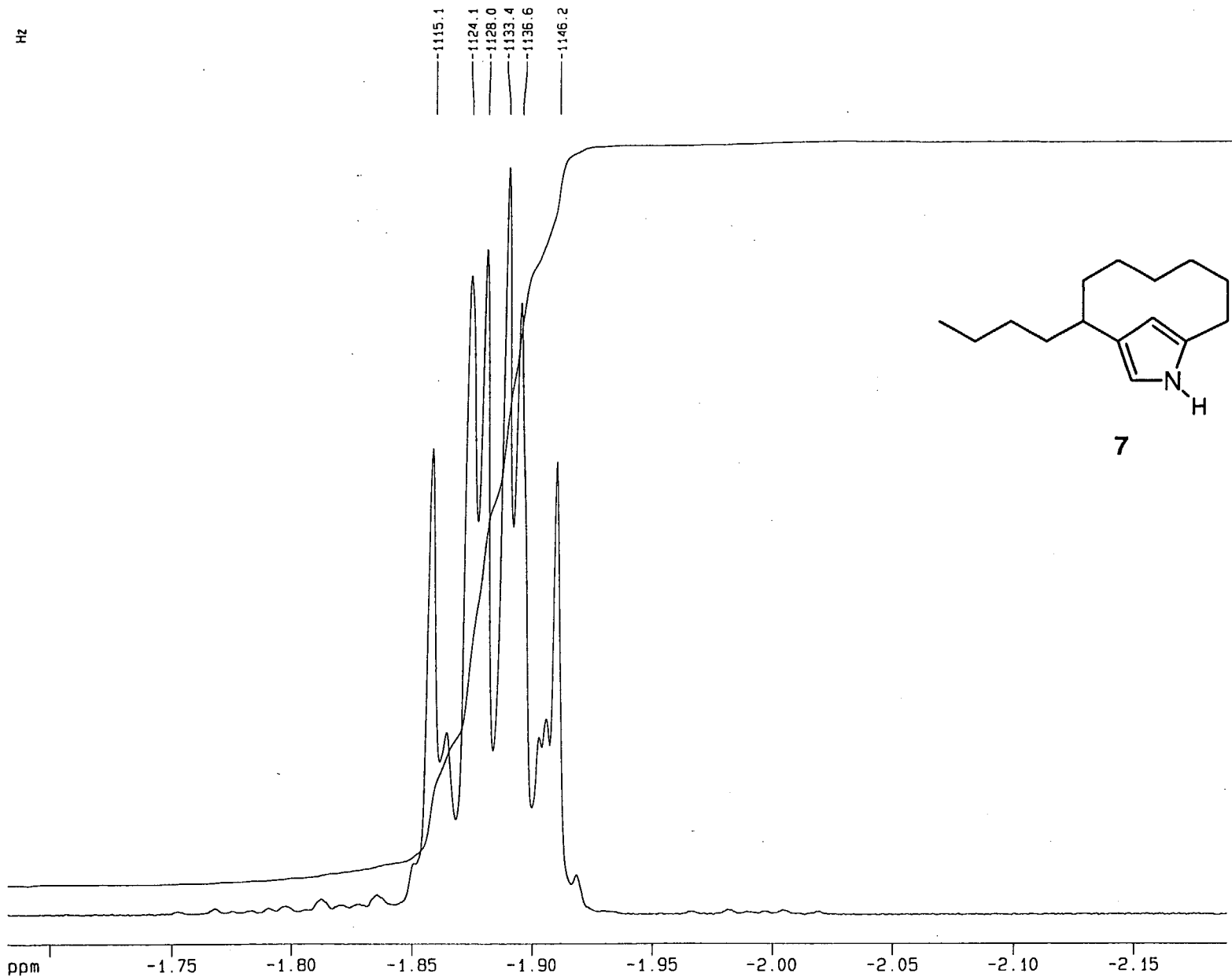


ACS Publications

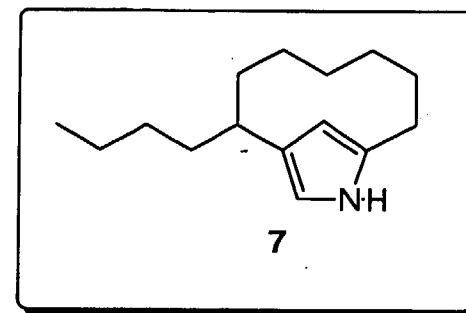
MOST TRUSTED. MOST CITED. MOST READ.

Copyright © 1998 American Chemical Society

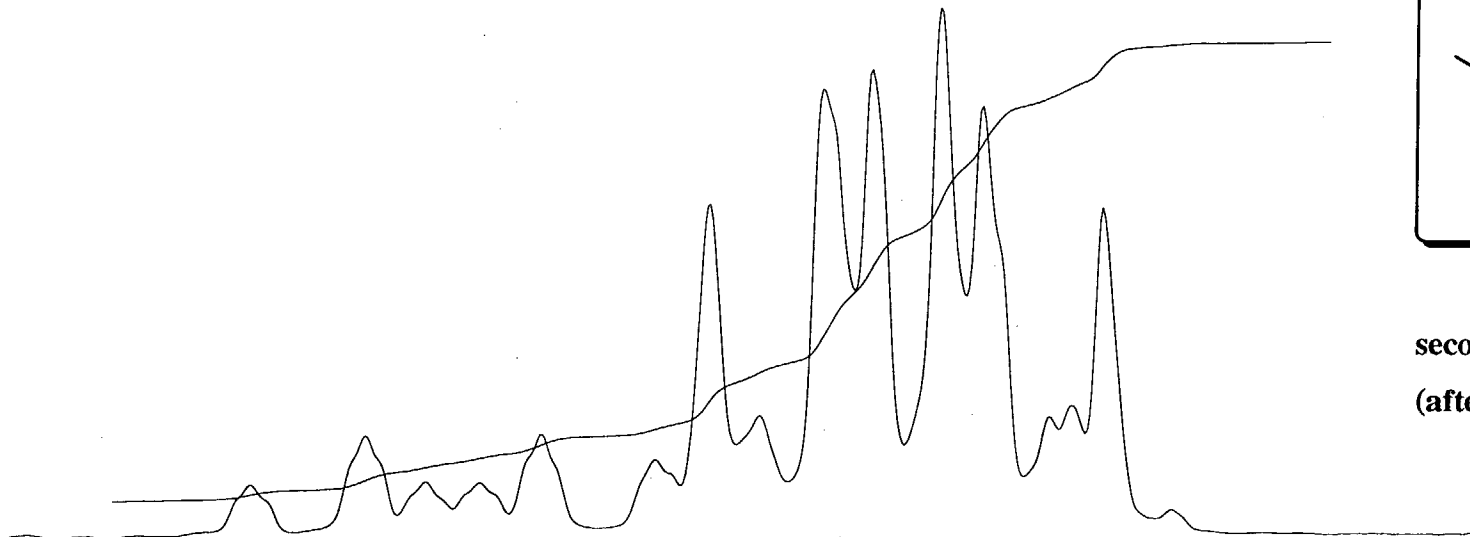
SZI-SB-082-01



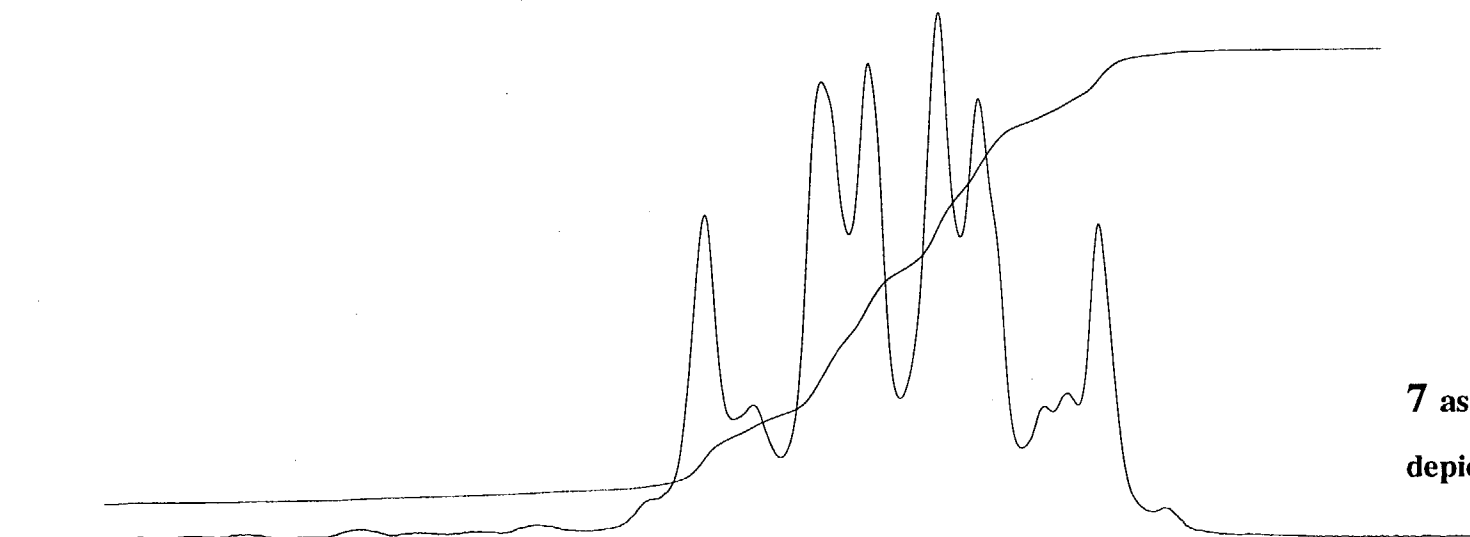
**RING FLIP VISIBLE IN THE
HIGH FIELD SIGNAL OF**



**second diastereomer evolving
(after 12 days at ambient temperature)**



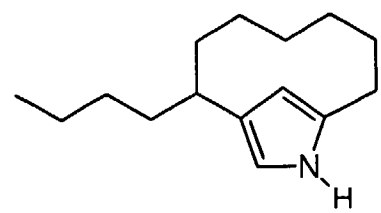
**7 as obtained by the synthesis
depicted in Scheme 6**



-1.78 -1.80 -1.82 -1.84 -1.86 -1.88 -1.90 -1.92 -1.94

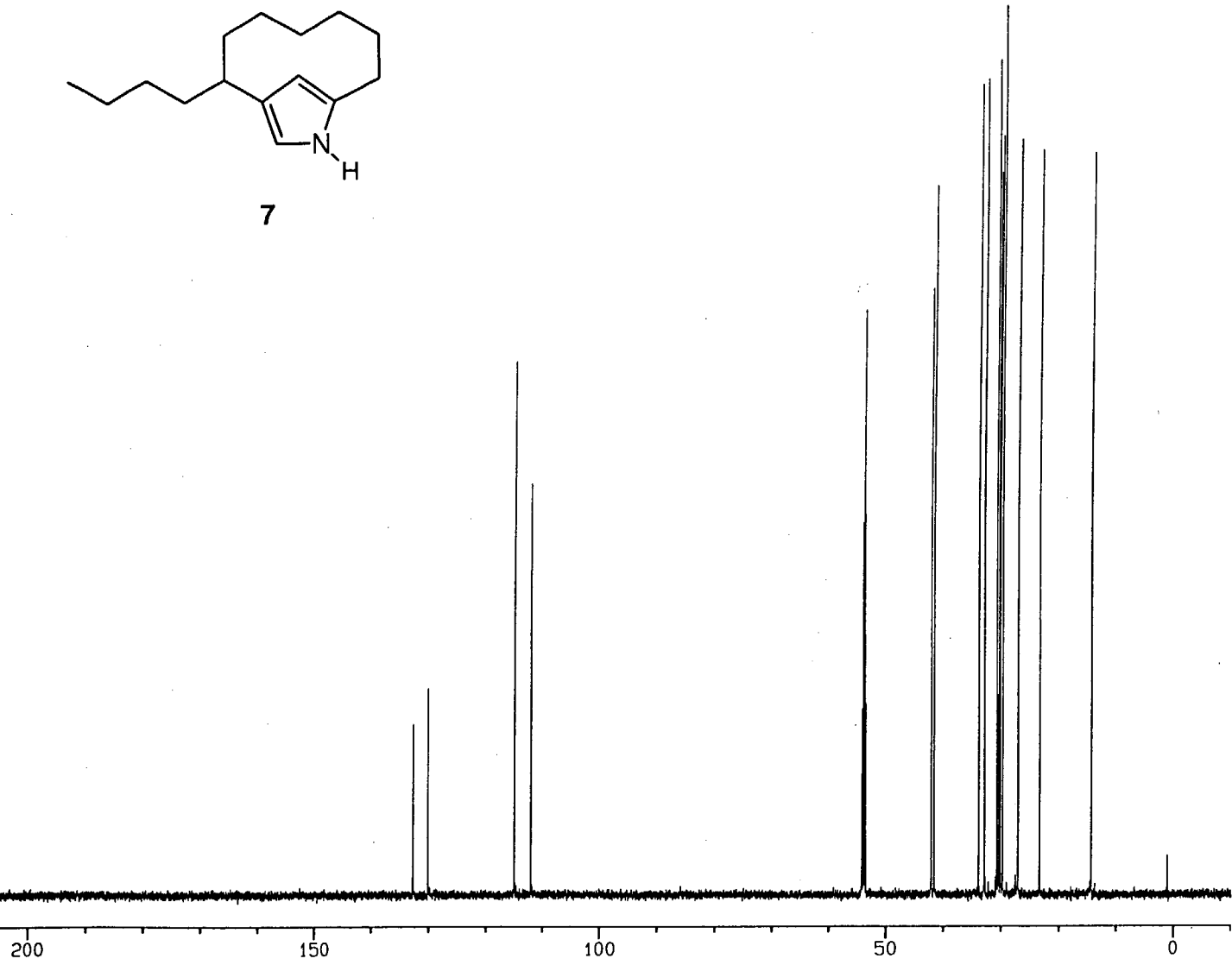
SZI-SB-082-01

C601948



7

132.763
130.173
115.041
112.019
54.160
53.980
53.800
53.620
53.439
42.140
41.657
33.885
32.893
30.745
30.391
30.137
29.700
27.101
23.388
14.324



Current Data Parameters
 NAME sz100201
 EXPNO 11
 PROCNO 1
 DU v
 USER wir

F2 - Acquisition Parameters
 Date_ 980318
 Time 13.34
 INSTRUM dm600
 PROBNM 5 mm TXI 13C
 PULPROG zgpg30
 TO 65536
 SOLVENT CD2C12
 NS 3213
 DS 80
 SWH 37593.984 Hz
 AQ 0.8716788 sec
 RG 16384
 DW 13.300 usec
 DE 4.50 usec
 TE 303.0 K
 P1 16.10 usec
 DELTA 0.000205 sec
 O1 0.0300000 sec
 O12 0.0000000 sec
 PL2 0.00 dB
 P3 9.00 usec
 SFO2 600.2217406 MHz
 NUC2 13C
 D2 0.00100000 sec
 P4 18.00 usec
 SFO1 150.9419346 MHz
 NUC1 13C
 PL1 0.00 dB
 P2 22.00 usec
 PL12 17.00 dB
 DE 4.50 usec
 CPDPRG2 waltz16
 PCPD2 80.00 usec

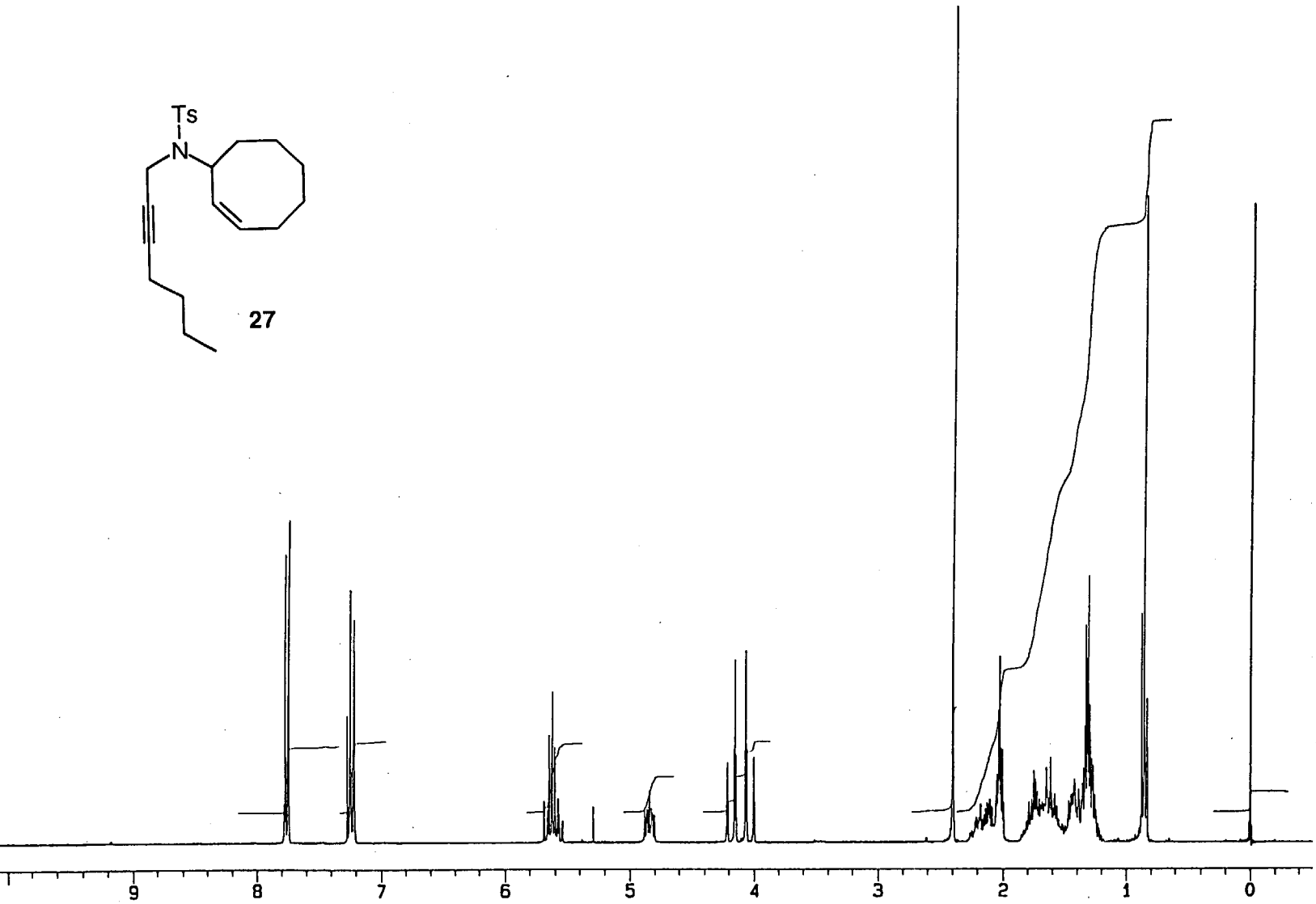
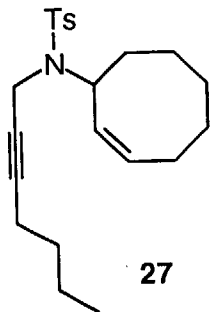
F2 - Processing parameters
 SI 65536
 SF 150.9253777 MHz
 SR -1.31 Hz
 MDW EM
 SSB 0
 LB 1.00 Hz
 GB 0
 PC 2.00

1D NMR plot parameters
 CX 20.00 cm
 CY 14.00 cm
 F1P 220.000 ppm
 F1 33203.58 Hz
 F2P -10.000 ppm
 F2 -1509.26 Hz
 PPHCM 11.50000 ppm/cm
 HZCM 1735.64209 Hz/cm

SZI-SB-082-01

7.771
7.765
7.749
7.743
7.267
7.246
7.244
7.242
7.240
7.237
7.224
7.222
7.219
7.217
7.215
5.649
5.627
5.624
5.607
5.582
5.579
4.843
4.213
4.160
4.152
4.145
4.076
4.069
4.061
4.008

2.399
2.102
2.035
2.028
2.020
2.005
1.617
1.341
1.336
1.331
1.321
1.317
1.308
1.299
1.294
1.284
1.273
1.204
0.881
0.858
0.853
0.849
0.837
0.833
0.000



Current Data Parameters
 NAME nov14126
 EXPNO 10
 PROCNO 1
 DU u
 USER et

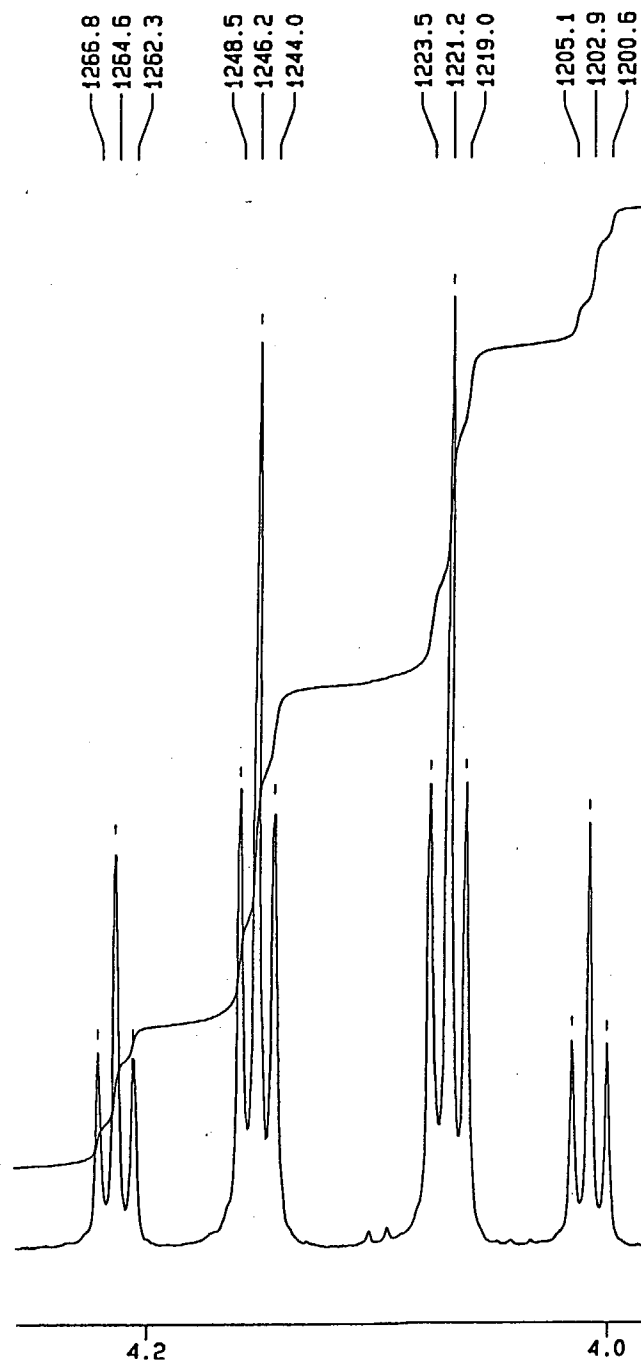
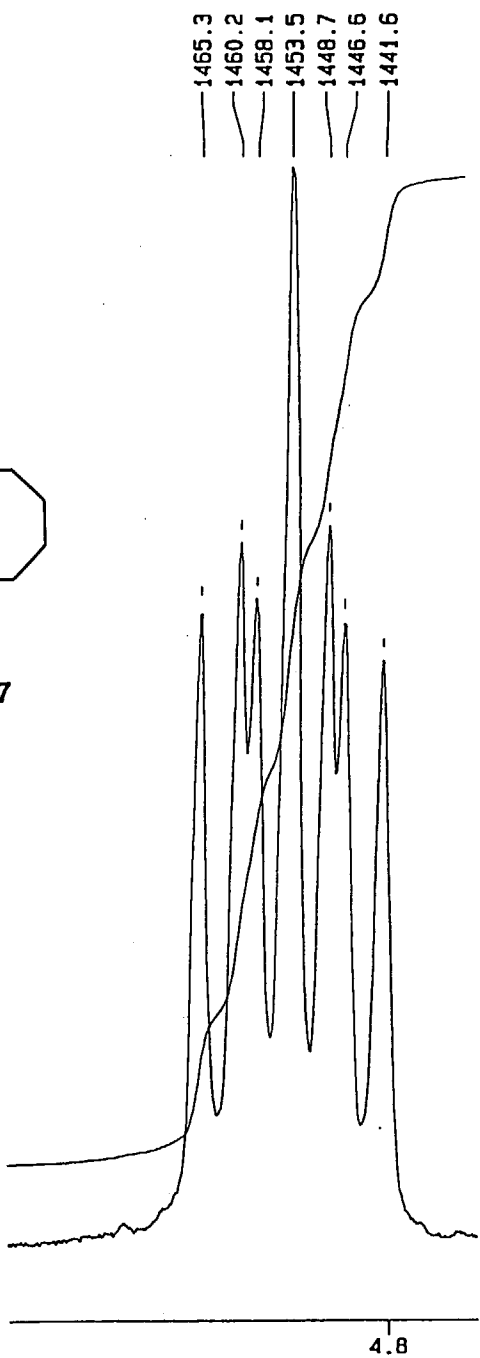
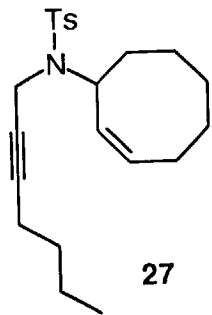
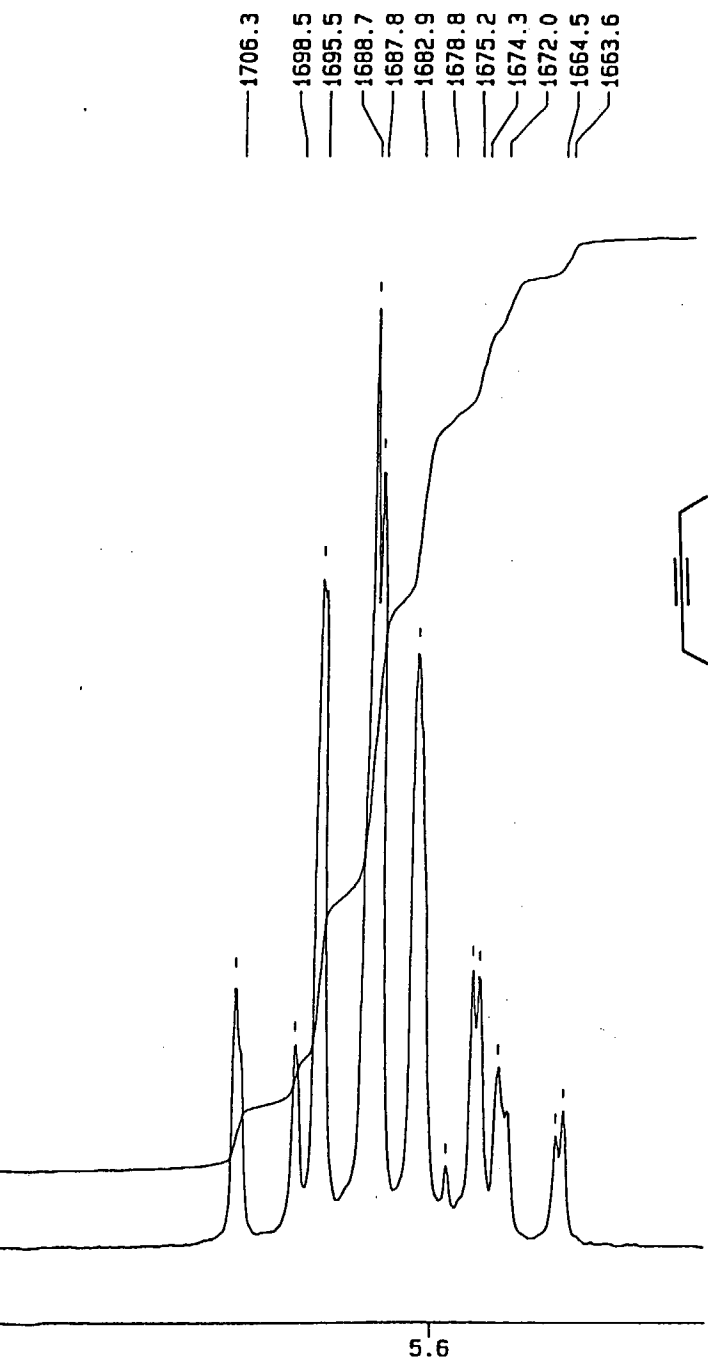
F2 - Acquisition Parameters
 Date 961118
 Time 10.15
 PULPROG zg30
 SOLVENT CDCl3
 AQ 2.6214736 sec
 DW 80.0 usec
 RG 256
 NUCLEUS 1H
 SFO1 300.1349393 MHz
 SFO2 360.1319532 MHz
 TE 302.0 K
 HL1 0 dB
 D1 1.0000000 sec
 P1 6.8 usec
 DE 100.0 usec
 SFO1 300.1349393 MHz
 SWH 6249.97 Hz
 TD 32768
 NS 32
 DS 2

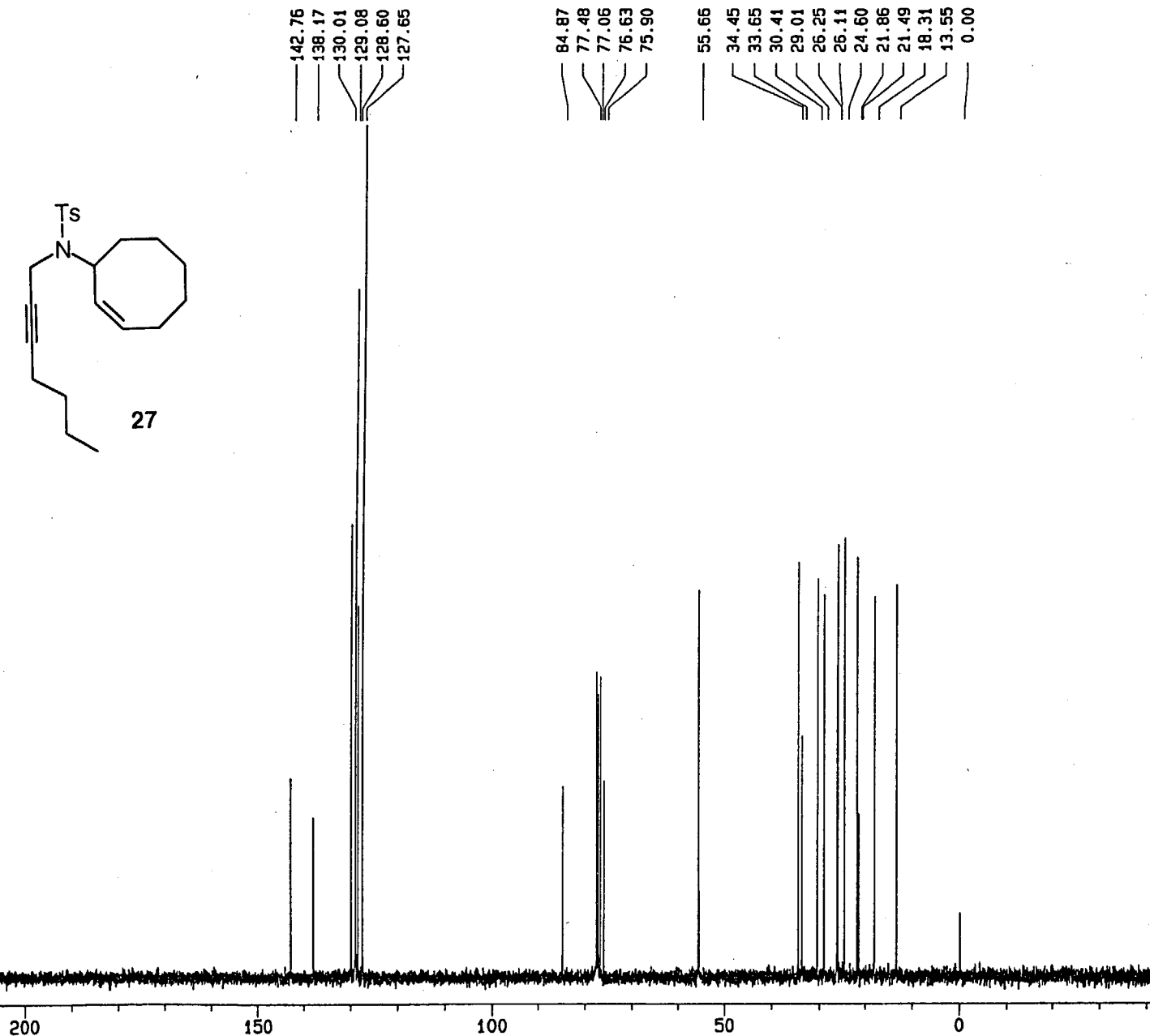
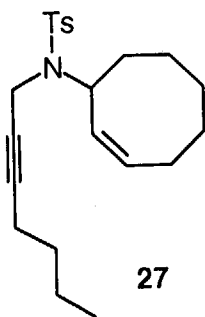
F2 - Processing parameters
 SI 32768
 SF 300.1333654 MHz
 SR 3365.40 Hz
 HZpPT 0.1907 Hz
 WDW EM
 SSB 0
 LB 0.00 Hz
 GB 0
 PC 8.00

1D NMR plot parameters
 CX 22.10 cm
 CY 14.00 cm
 F1P 10.500 ppm
 F1 3151.40 Hz
 F2P -0.500 ppm
 F2 -150.07 Hz
 PPMCM 0.49774 ppm/cm
 HZCM 149.38765 Hz/cm

SZI-SA-059-01

59-01





Current Data Parameters
 NAME nov14126
 EXPNO 11
 PROCNO 1
 DU u
 USER et

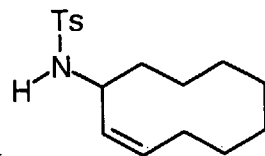
F2 - Acquisition Parameters
 Date 961118
 Time 10.24
 PULPROG zgdc30
 SOLVENT CDC13
 AQ 0.9830652 sec
 DW 15.0 usec
 RG 16384
 NUCLEUS 13C
 SF01 75.4815977 MHz
 SF02 300.1344003 MHz
 TE 302.0 K
 D11 0.0300000 sec
 P31 100.0 usec
 S2 27 dB
 HL1 0 dB
 D1 0.0300000 sec
 P1 5.7 usec
 DE 21.4 usec
 SF01 75.4815977 MHz
 SWH 33333.16 Hz
 TD 65536
 NS 2000
 DS 16

F2 - Processing parameters
 SI 32768
 SF 75.4685892 MHz
 SR -1410.77 Hz
 HZpPT 1.0172 Hz
 WDW EM
 SSB 0
 LB 0.80 Hz
 GB 0
 PC 2.00

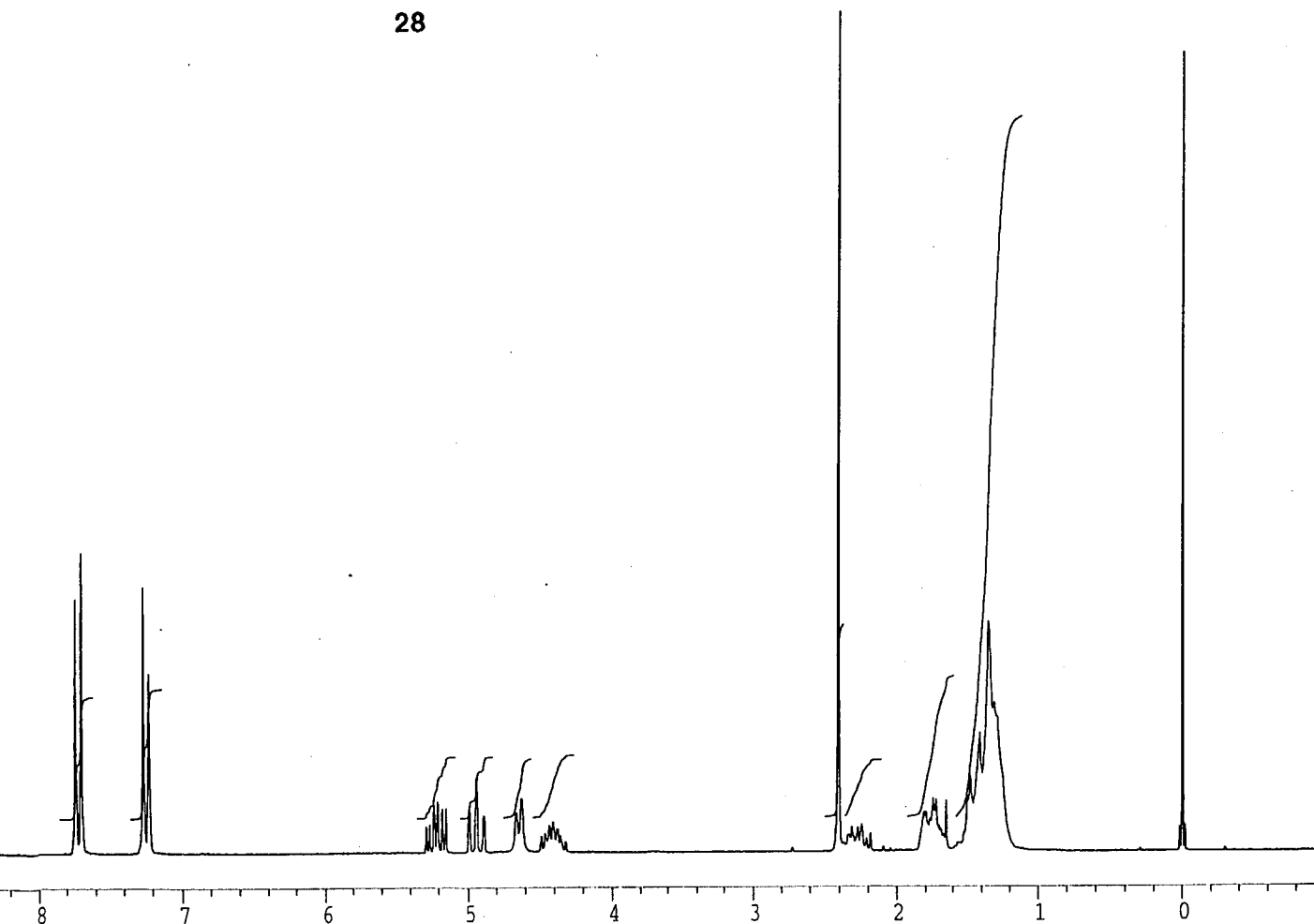
1D NMR plot parameters
 CX 22.10 cm
 CY 14.00 cm
 F1P 250.000 ppm
 F1 18867.15 Hz
 F2P -42.900 ppm
 F2 -3237.60 Hz
 PPMCM 13.25339 ppm/cm
 HZCM 1000.21490 Hz/cm

SZI-SA-059-01

SZI-SA-031-01



28



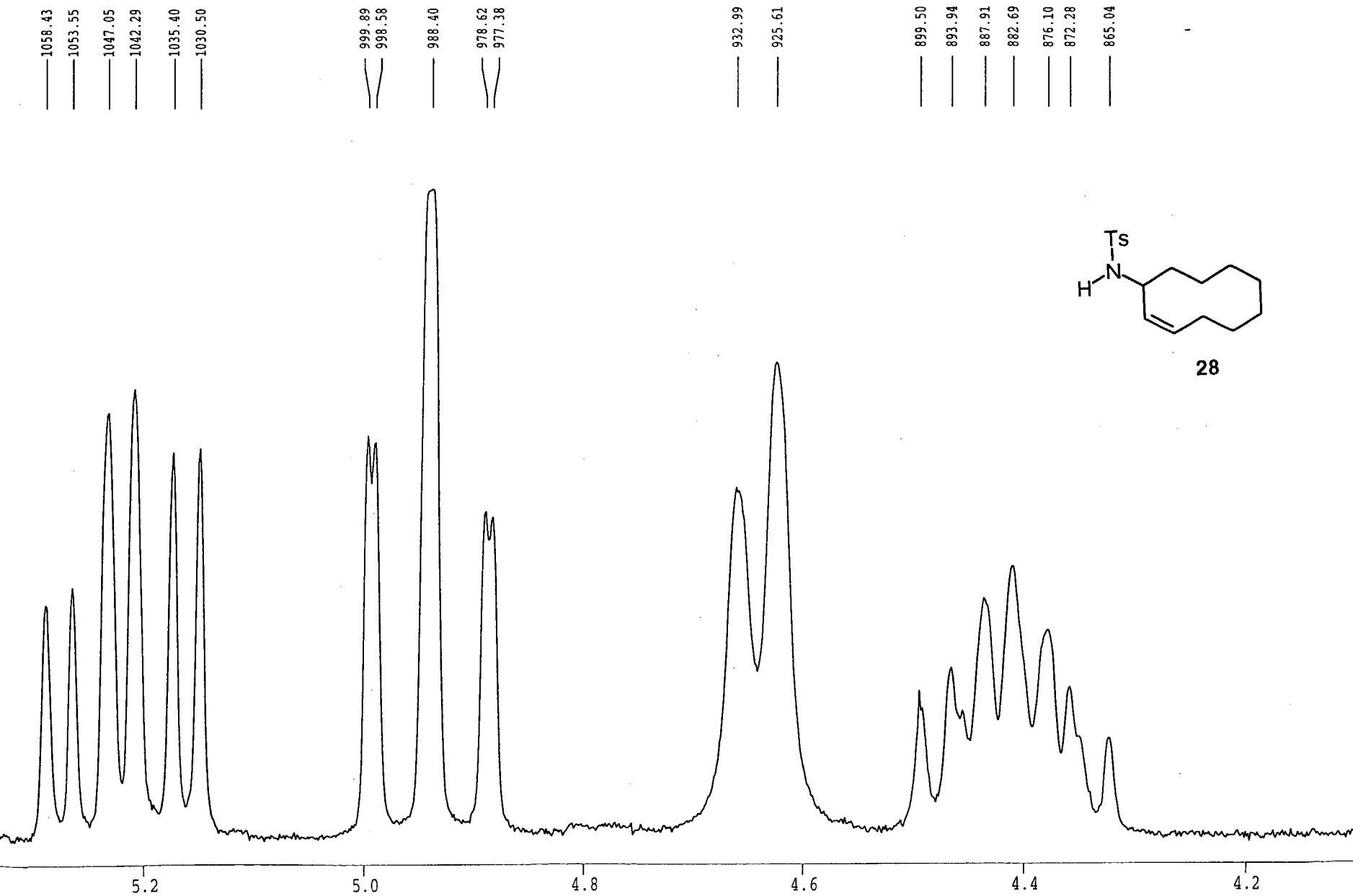
Current Data Parameters
NAME AP150F
EXPNO 119
PROCNO 1
DU mpi
USER szi

F2 - Acquisition Parameters
Date_ 970415
Time 23.44
INSTRUM ac200
PROBHD
PULPROG X51.AU
TD 32768
SOLVENT CDC13
NS 32
DS 0
SWH 4032.258 Hz
FIDRES 0.123055 Hz
AQ 4.0632820 sec
RG 16
DW 124.000 usec
DE 155.00 usec
TE 300.0 K
PI 10.10 usec
HL1 83 dB
D1 1.0000000 sec
DE 155.00 usec
SF01 200.1332390 MHz
NUCLEUS 1H

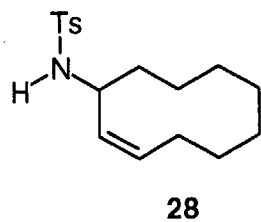
F2 - Processing parameters
SI 16384
SF 200.1323395 MHz
WDW no
SSB 0
LB 0.00 Hz
GB 0
PC 0.10

1D NMR plot parameters
CX 20.00 cm
FIP 9.000 ppm
F1 1801.19 Hz
F2P -1.000 ppm
F2 -200.13 Hz
PPMCM 0.50000 ppm/cm
HZCM 100.06617 Hz/cm

SZI-SA-031-01



SZI-SA-031-03



142.947
138.249
131.544
129.680
129.259
127.248

77.631
76.998
76.361

50.461

35.574
26.561
25.623
25.365
24.881
21.471
20.738
20.343

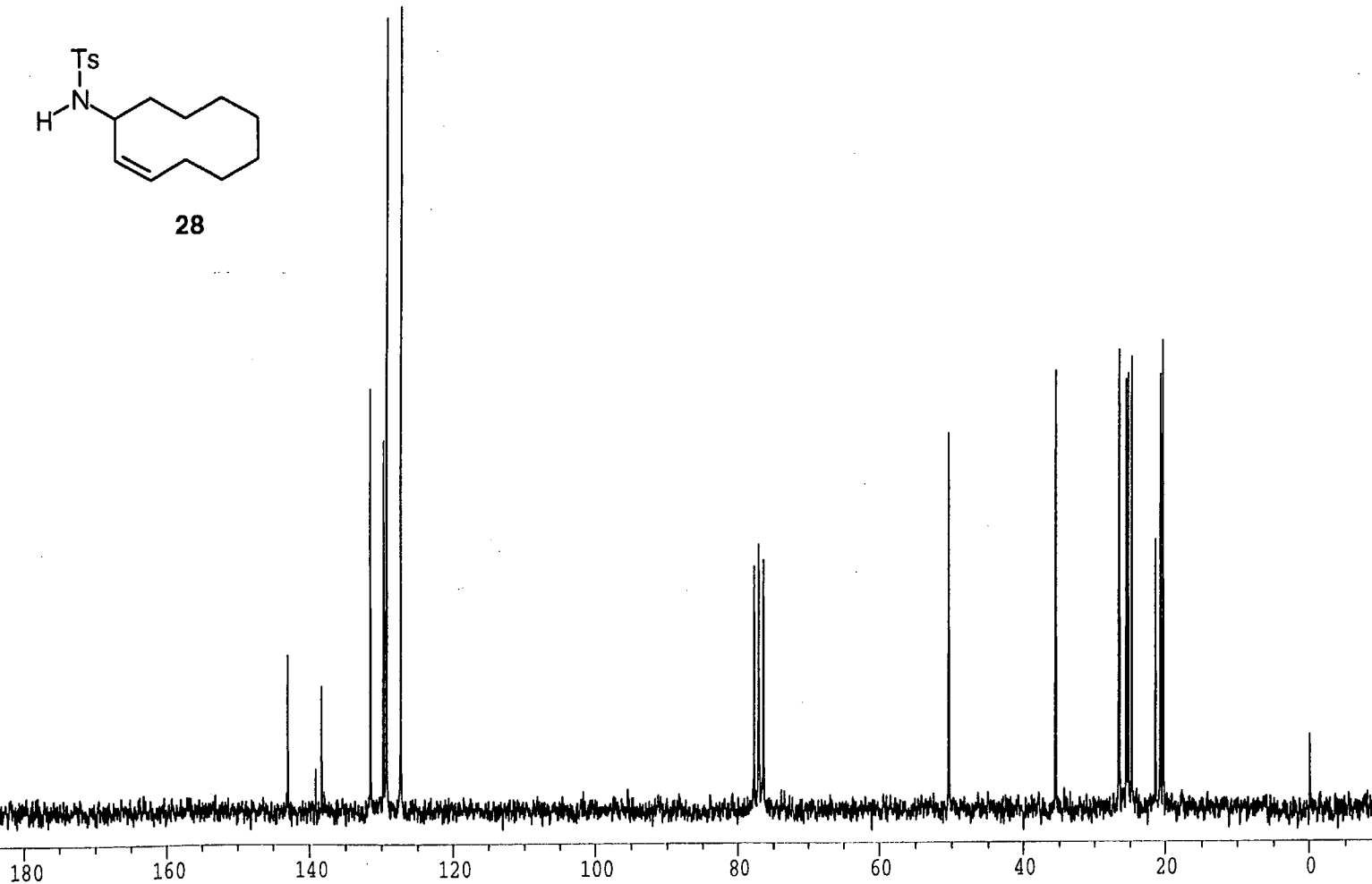
-0.053

Current Data Parameters
NAME AP151F
EXPNO 119
PROCNO 1
DU mpi
USER szi

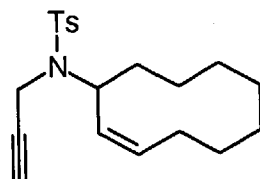
F2 - Acquisition Parameters
Date_ 970416
Time 0.17
INSTRUM ac200
PROBHD
PULPROG X60.AU
TD 32768
SOLVENT CDCl3
NS 1568
DS 0
SWH 14285.714 Hz
FIDRES 0.435965 Hz
AQ 1.1469300 sec
RG 640
DW 35.000 usec
DE 46.30 usec
TE 300.0 K
P1 15.50 usec
HL1 20 dB
D1 0.00100000 sec
DE 46.30 usec
SFO1 50.3287650 MHz
NUCLEUS 13C

F2 - Processing parameters
SI 16384
SF 50.3233180 MHz
WDW EM
SSB 0
LB 1.60 Hz
GB 0
PC 2.00

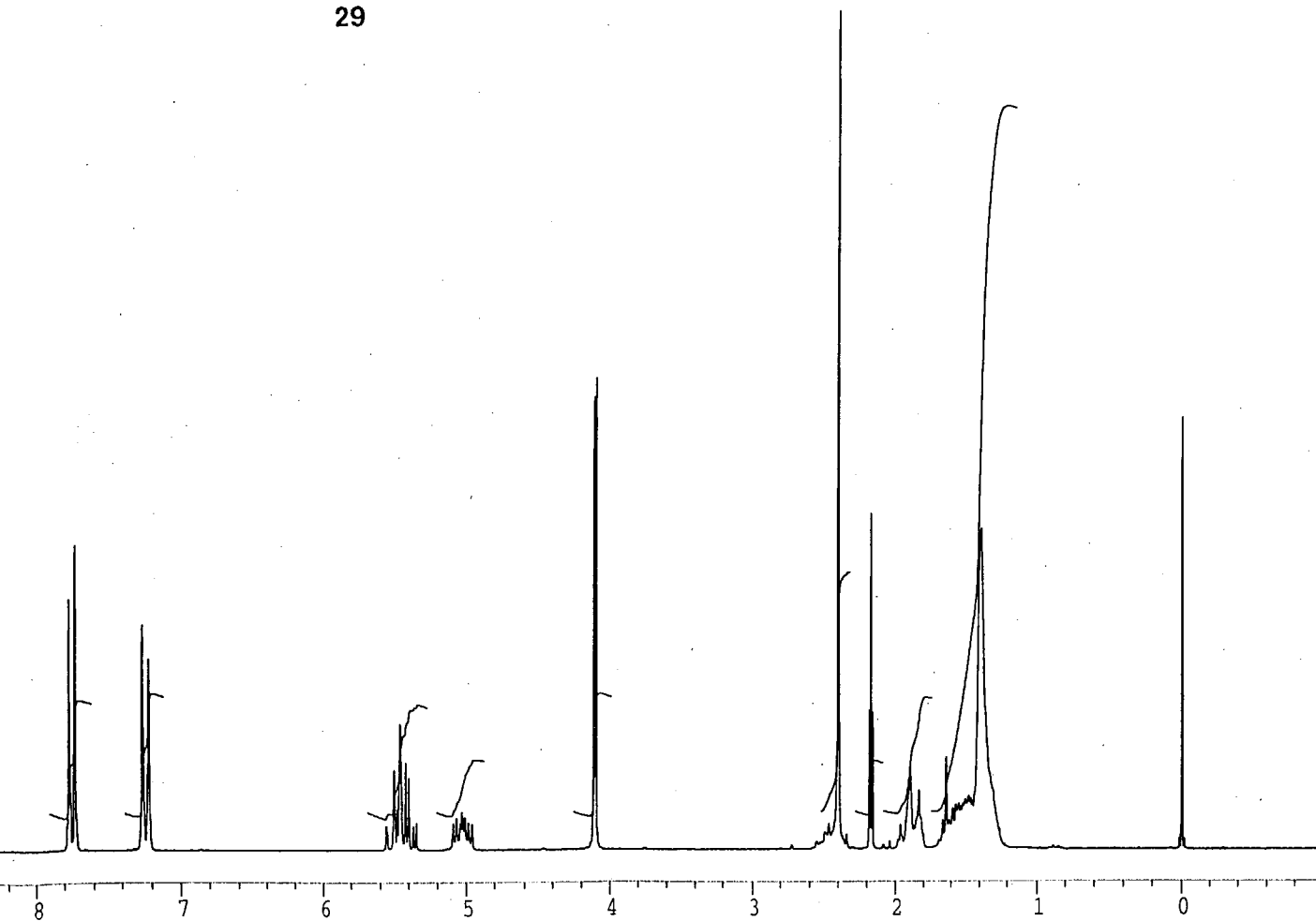
1D NMR plot parameters
CX 22.00 cm
F1P 200.000 ppm
F1 10064.66 Hz
F2P -10.000 ppm
F2 -503.23 Hz
PPMCM 9.54545 ppm/cm
HZCM 480.35892 Hz/cm



SZI-SA-034-01



29



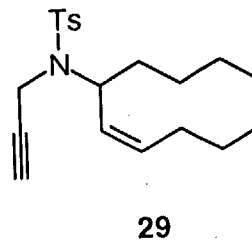
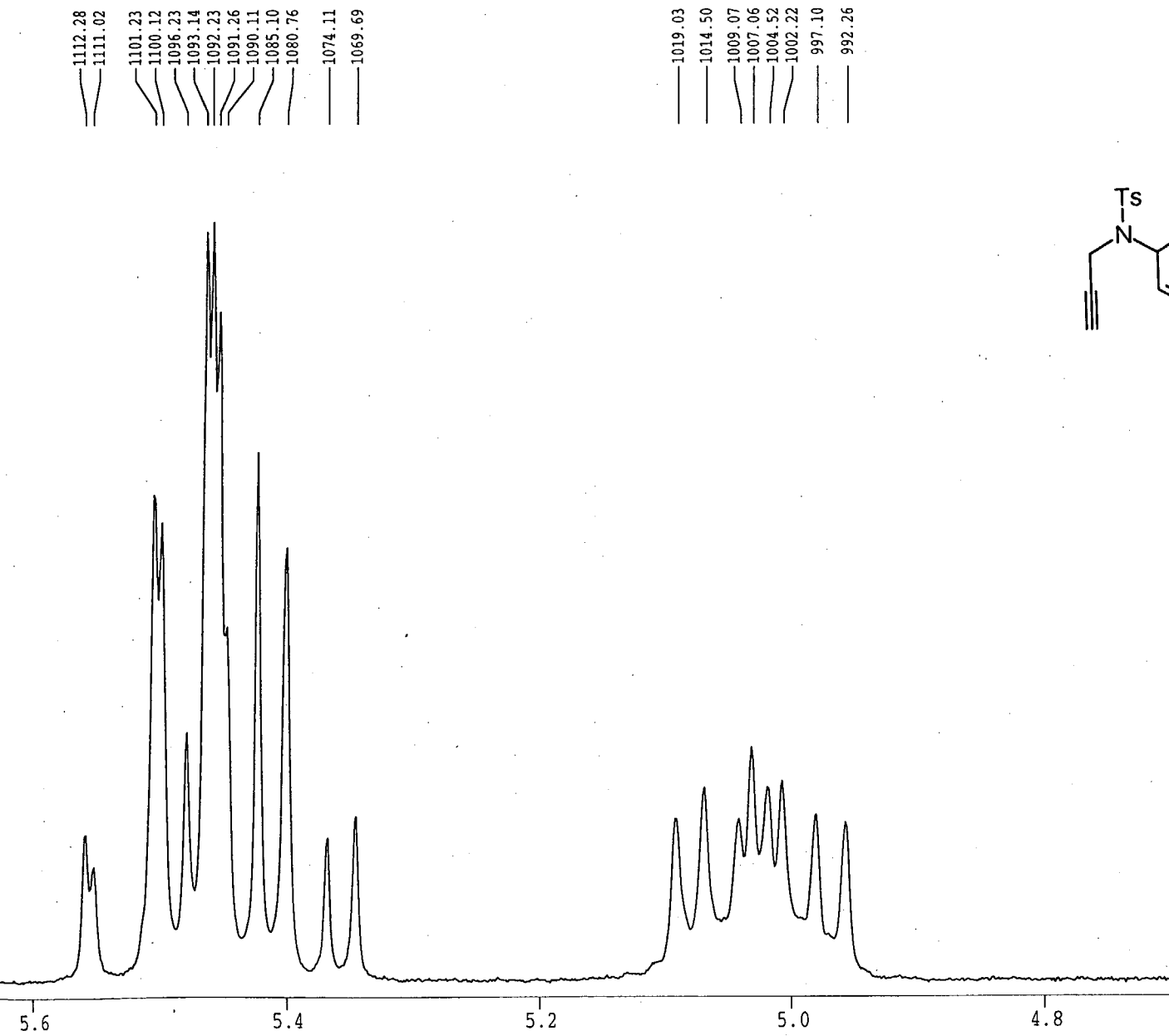
Current Data Parameters
NAME AP180F
EXPNO 146
PROCNO 1
DU mpi
USER szi

F2 - Acquisition Parameters
Date_ 970420
Time 19.56
INSTRUM ac200
PROBHD
PULPROG X59.AU
TD 32768
SOLVENT CDCl3
NS 32
DS 0
SWH 4032.258 Hz
FIDRES 0.123055 Hz
AQ 4.0632820 sec
RG 10
DW 124.000 usec
DE 155.00 usec
TE 300.0 K
PI 10.10 usec
HL1 83 dB
D1 1.0000000 sec
DE 155.00 usec
SF01 200.1323390 MHz
NUCLEUS 1H

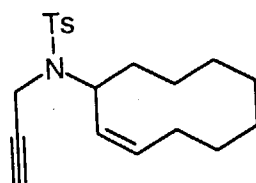
F2 - Processing parameters
SI 16384
SF 200.1323390 MHz
WDW no
SSB 0
LB 0.00 Hz
GB 0
PC 0.80

1D NMR plot parameters
CX 20.00 cm
F1P 9.000 ppm
F1 1801.19 Hz
F2P -1.000 ppm
F2 -200.13 Hz
PFMCM 0.50000 ppm/cm
HZCM 100.06617 Hz/cm

SZI-SA-034-01



SZI-SA-034-01



29

142.981
137.783
133.014
129.159
127.470
126.398

80.204
77.636
77.000
76.363
72.322

53.781

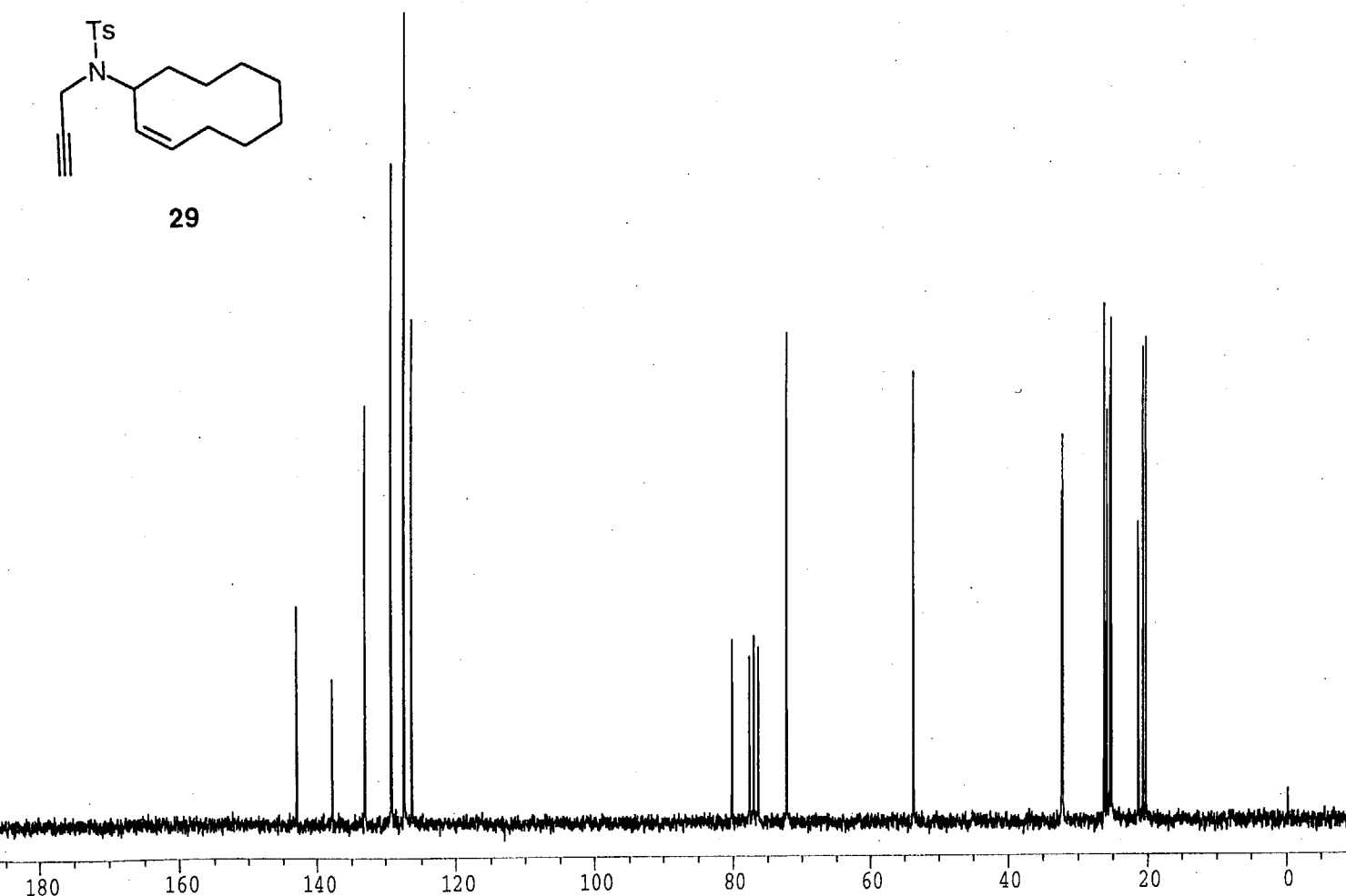
32.497
32.354
26.284
25.942
25.536
25.331
21.451
20.791
20.378

Current Data Parameters
NAME AP181F
EXPNO 146
PROCNO 1
DU mpi
USER szi

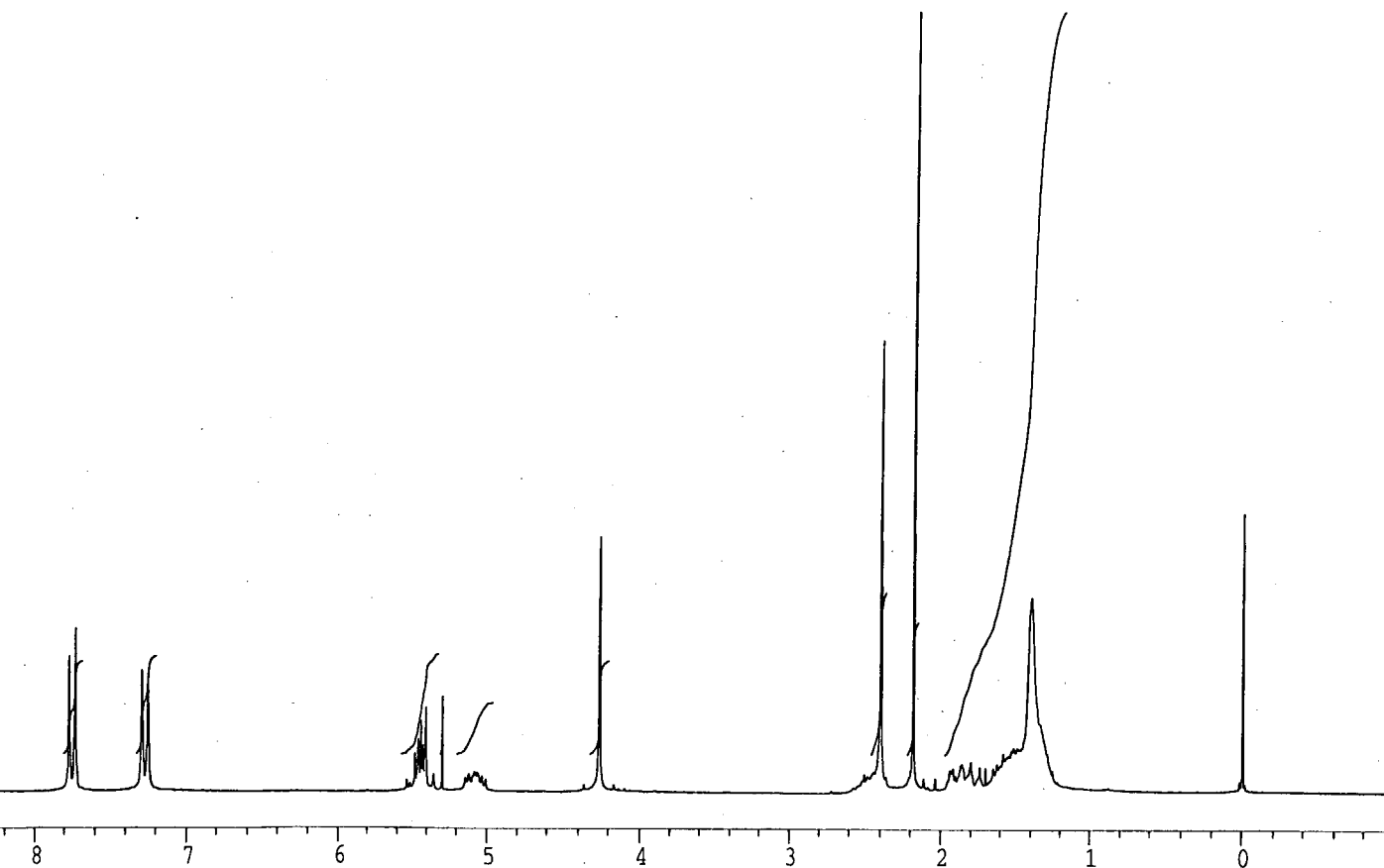
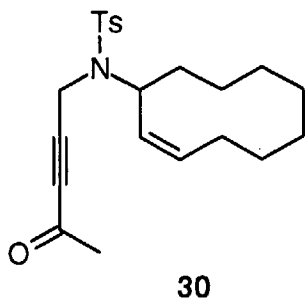
F2 - Acquisition Parameters
Date_ 970420
Time 20.28
INSTRUM ac200
PROBHD
PULPROG X60.AU
TD 32768
SOLVENT CDCl3
NS 1568
DS 0
SWH 14285.714 Hz
FIDRES 0.435965 Hz
AQ 1.1469300 sec
RG 400
DW 35.000 usec
DE 46.30 usec
TE 300.0 K
P1 15.50 usec
HL1 20 dB
D1 0.00100000 sec
DE 46.30 usec
SF01 50.3287650 MHz
NUCLEUS 13C

F2 - Processing parameters
SI 16384
SF 50.3233189 MHz
WDW EM
SSB 0
LB 0.80 Hz
GB 0
PC 2.00

1D NMR plot parameters
CX 21.00 cm
F1P 200.000 ppm
F1 10064.66 Hz
F2P -10.000 ppm
F2 -503.23 Hz
PPMCM 10.00000 ppm/cm
HZCM 503.23318 Hz/cm



SZI-SA-130-01



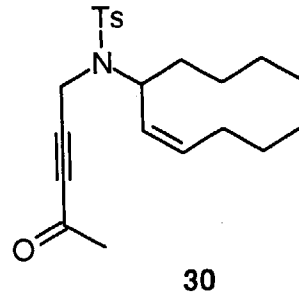
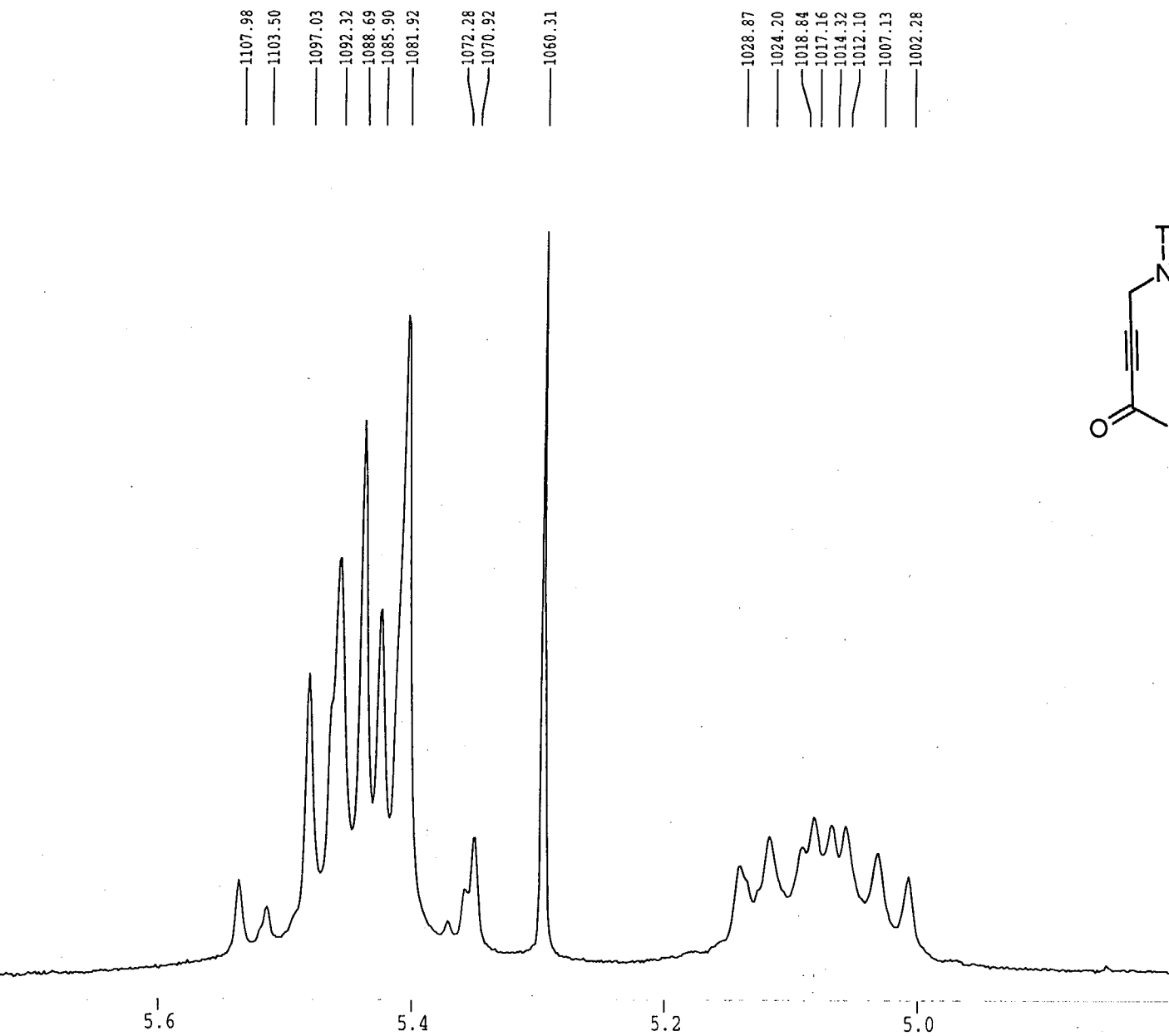
Current Data Parameters
NAME A21LOF
EXPNO 115
PROCNO 1
DU mpi
USER szi

F2 - Acquisition Parameters
Date_ 970421
Time 16.29
INSTRUM am200
PROBHD
PULPROG X00.AU
TD 32768
SOLVENT CDCl3
NS 32
DS 0
SWH 4385.965 Hz
FIDRES 0.133849 Hz
AQ 3.7356019 sec
RG 16
DW 114.000 usec
DE 145.00 usec
TE 300.0 K
D8 0.00020000 sec
HL1 83 dB
P1 8.80 usec
D1 0.00200000 sec
DE 145.00 usec
SF01 200.1331600 MHz
NUCLEUS 1H

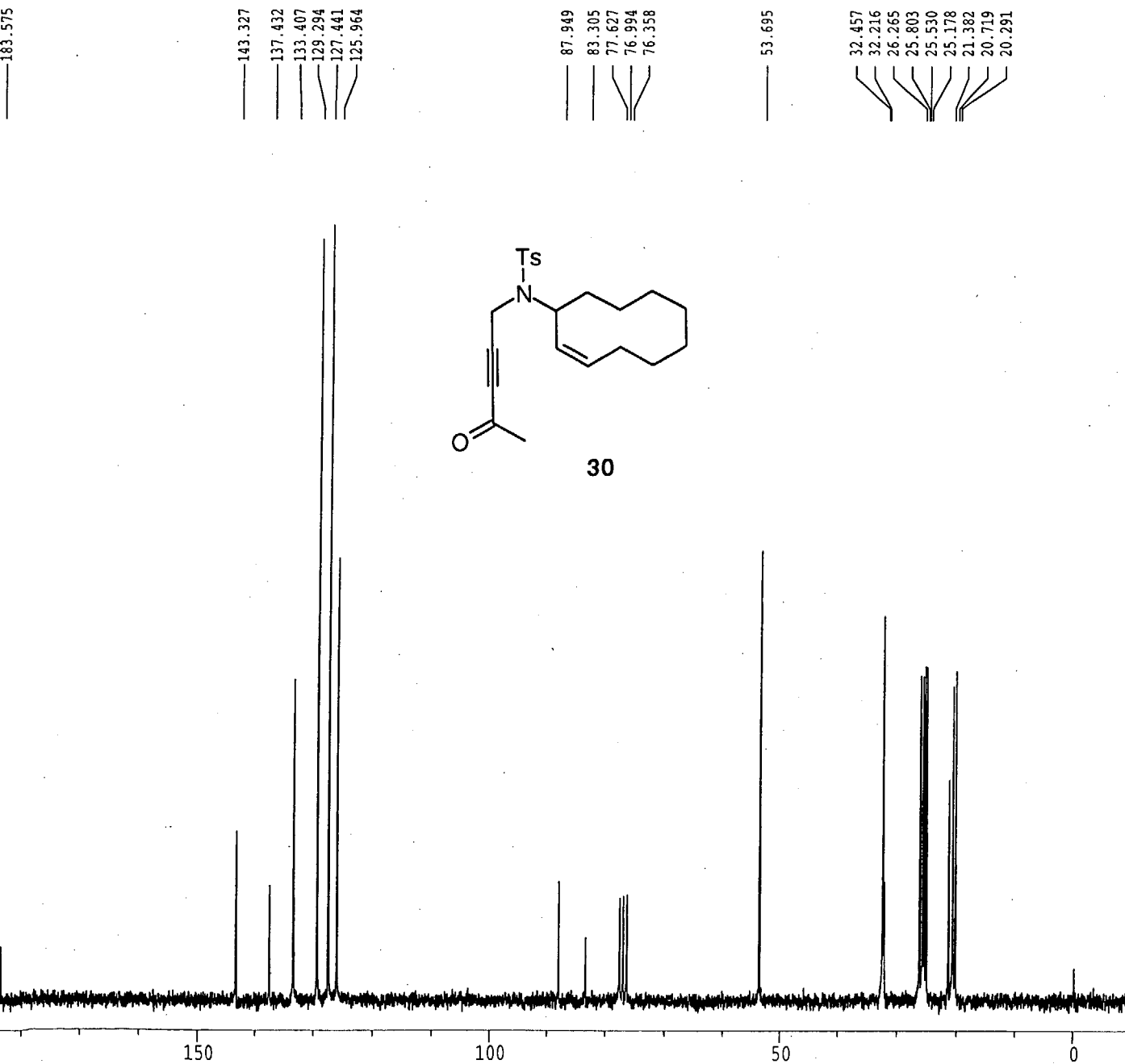
F2 - Processing parameters
SI 16384
SF 200.1323363 MHz
WDW no
SSB 0
LB 0.00 Hz
GB 0
PC 0.60

1D NMR plot parameters
CX 20.01 cm
F1P 9.000 ppm
F1 1801.19 Hz
F2P -1.000 ppm
F2 -200.13 Hz
PPMCM 0.49967 ppm/cm
HZCM 100.00002 Hz/cm

SZI-SA-130-01



SZI-SA-130-01

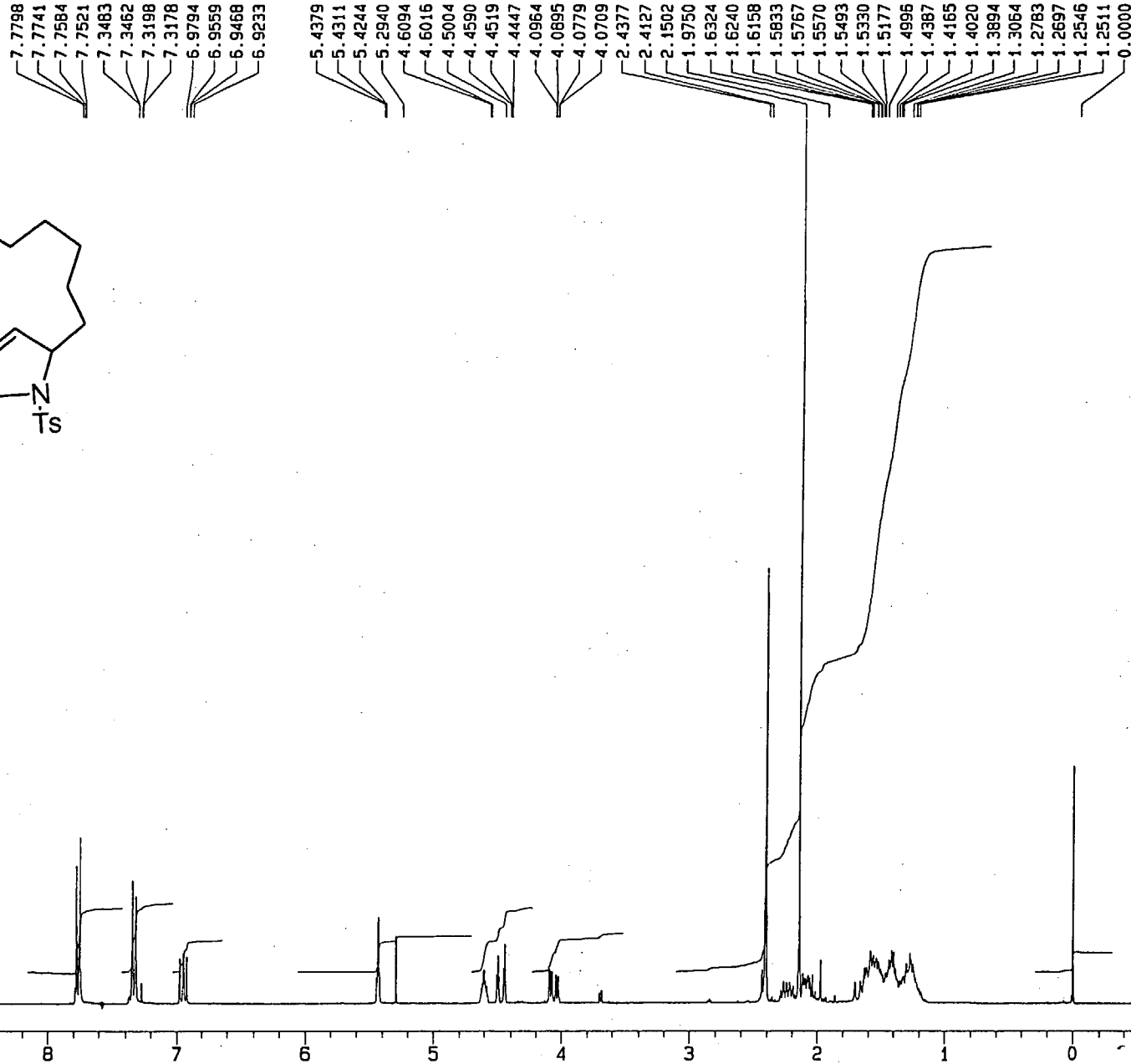
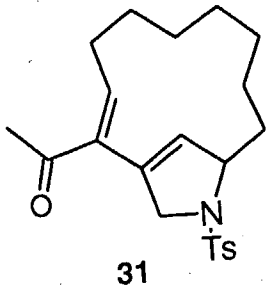


Current Data Parameters
 NAME A21L1F
 EXPNO 115
 PROCNO 1
 DU mpi
 USER szi

F2 - Acquisition Parameters
 Date_ 970421
 Time 17.02
 INSTRUM am200
 PROBHD
 PULPROG X02.AU
 TD 32768
 SOLVENT CDCl3
 NS 1568
 DS 0
 SWH 14285.714 Hz
 FIDRES 0.435965 Hz
 AQ 1.1469300 sec
 RG 800
 DW 35.000 usec
 DE 46.30 usec
 TE 300.0 K
 P1 9.50 usec
 HL1 22 dB
 D1 0.0010000 sec
 DE 46.30 usec
 SF01 50.3287650 MHz
 NUCLEUS 13C

F2 - Processing parameters
 SI 16384
 SF 50.3233206 MHz
 WDW EM
 SSB 0
 LB 0.80 Hz
 GB 0
 PC 2.00

1D NMR plot parameters
 CX 20.00 cm
 F1P 200.000 ppm
 F1 10064.66 Hz
 F2P -10.000 ppm
 F2 -503.23 Hz
 PPMCM 10.50000 ppm/cm
 HZCM 528.39490 Hz/cm



Current Data Parameters
 NAME apr29103
 EXPNO 10
 PROCNO 1
 DU u1
 USER et

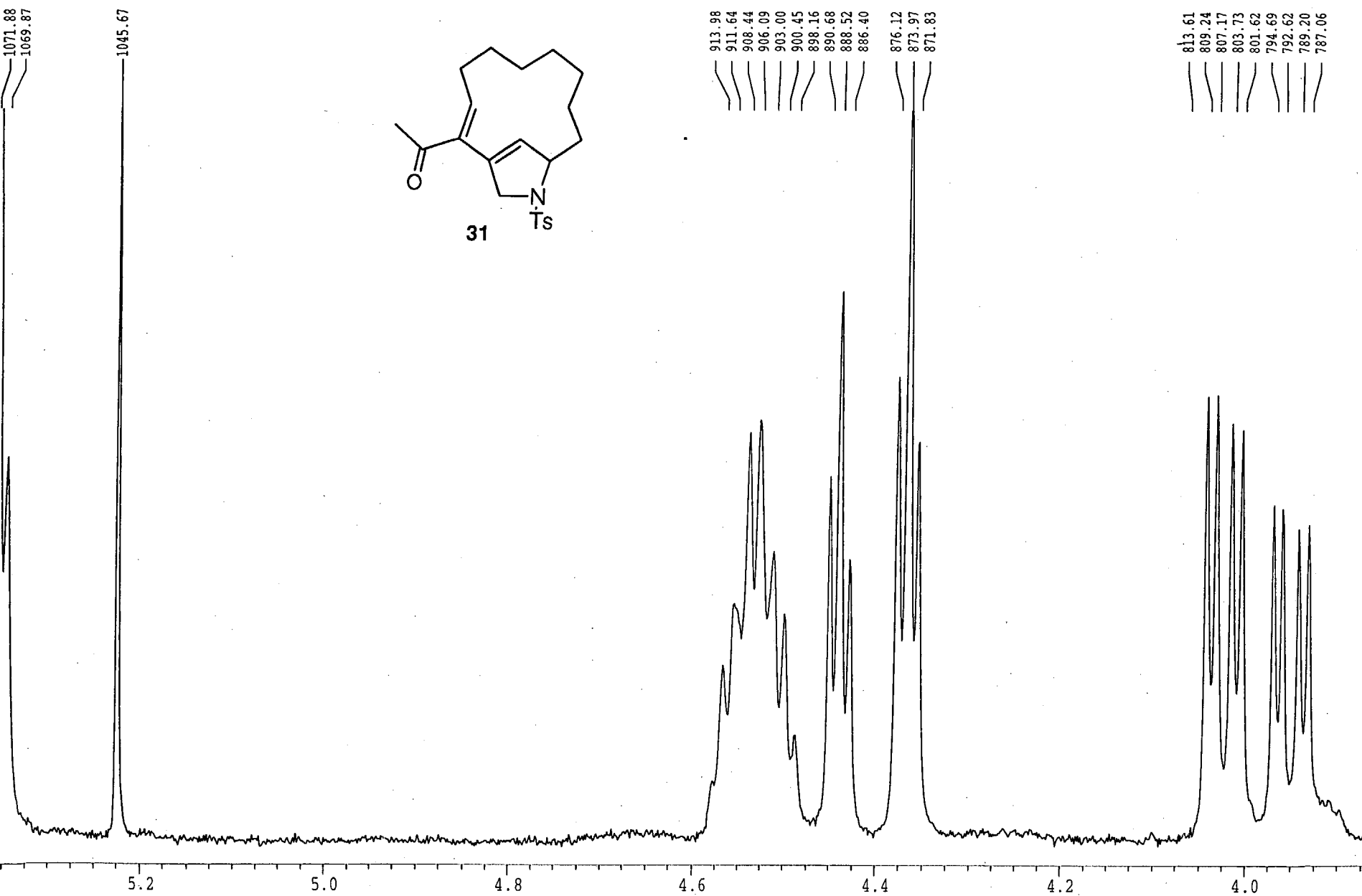
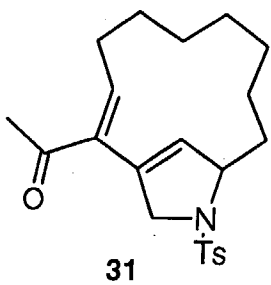
F2 - Acquisition Parameters
 Date 970429
 Time 14.18
 PULPROG zg30
 SOLVENT CDCl3
 AQ 2.6214736 sec
 DW 80.0 usec
 RG 256
 NUCLEUS 1H
 SF01 300.1349393 MHz
 SF02 360.1319532 MHz
 TE 302.0 K
 HL1 0 dB
 D1 1.0000000 sec
 P1 6.8 usec
 DE 100.0 usec
 SF01 300.1349393 MHz
 SWH 6249.97 Hz
 TO 32768
 NS 32
 DS 2

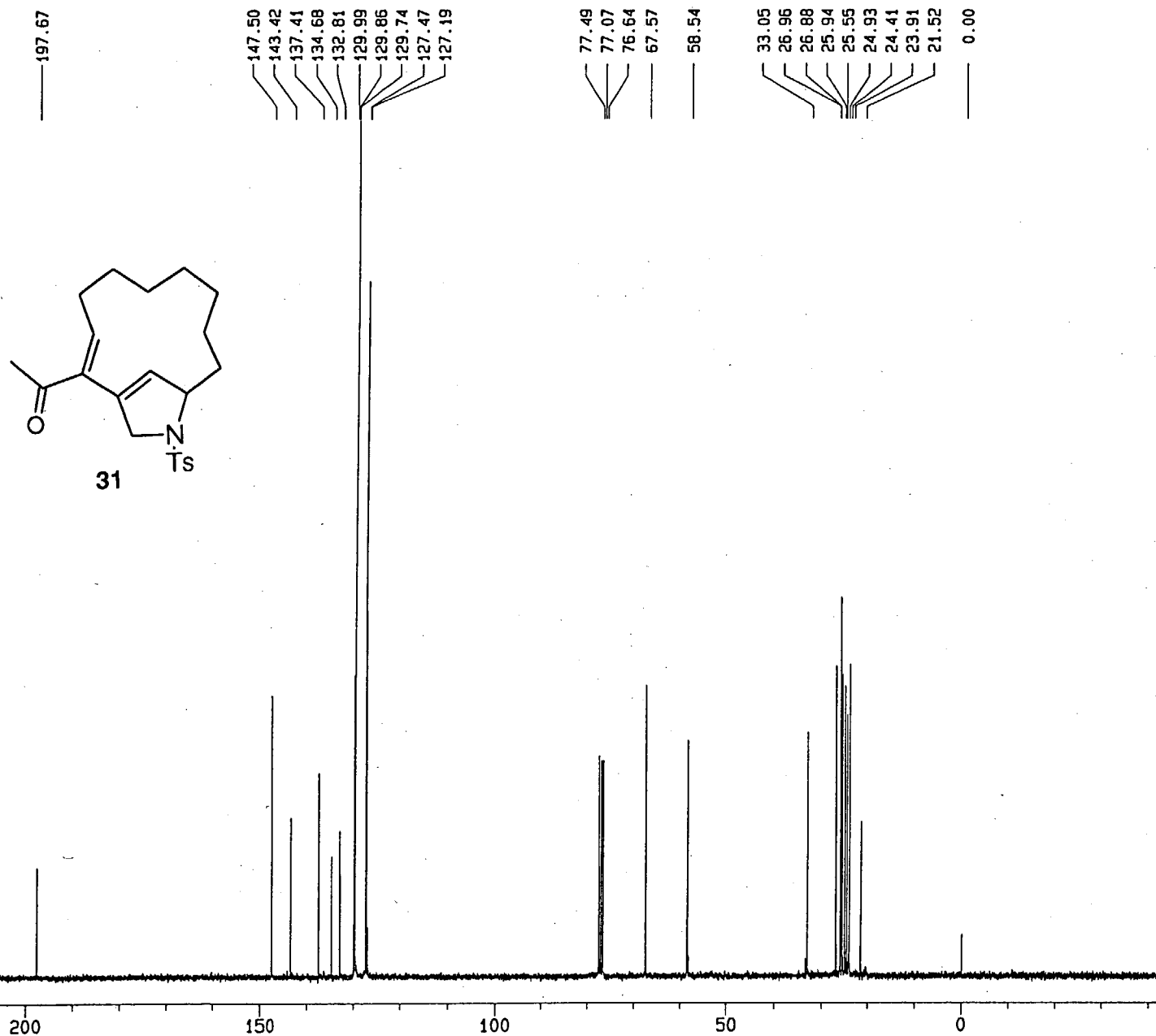
F2 - Processing parameters
 SI 32768
 SF 300.1333628 MHz
 SR 3362.80 Hz
 HZpPT 0.1907 Hz
 WDW EM
 SSB 0
 LB 0.00 Hz
 GB 0
 PC 8.00

1D NMR plot parameters
 CX 22.10 cm
 CY 14.00 cm
 F1P 10.500 ppm
 F1 3151.40 Hz
 F2P -0.500 ppm
 F2 -150.07 Hz
 PPMCM 0.49774 ppm/cm
 HZCM 149.38765 Hz/cm

SZI-SA-135-02

SZI-SB-024-01





Current Data Parameters
 NAME apr29103
 EXPNO 11
 PROCNO 1
 DU u1
 USER et

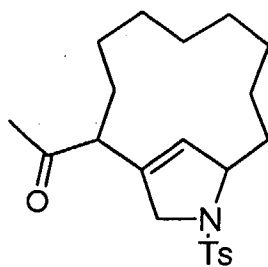
F2 - Acquisition Parameters
 Date 970429
 Time 14.27
 PULPROG zgdc30
 SOLVENT CDCl3
 AQ 0.9830652 sec
 DW 15.0 usec
 RG 16384
 NUCLEUS 13C
 SF01 75.4815977 MHz
 SF02 300.1344003 MHz
 TE 302.0 K
 D11 0.0300000 sec
 P31 100.0 usec
 S2 27 dB
 HL1 0 dB
 D1 0.0300000 sec
 P1 5.7 usec
 DE 21.4 usec
 SF01 75.4815977 MHz
 SWH 33333.16 Hz
 TD 65536
 NS 6000
 DS 16

F2 - Processing parameters
 SI 32768
 SF 75.4685902 MHz
 SR -1409.75 Hz
 HZpPT 1.0172 Hz
 WDW EM
 SSB 0
 LB 0.80 Hz
 GB 0
 PC 2.00

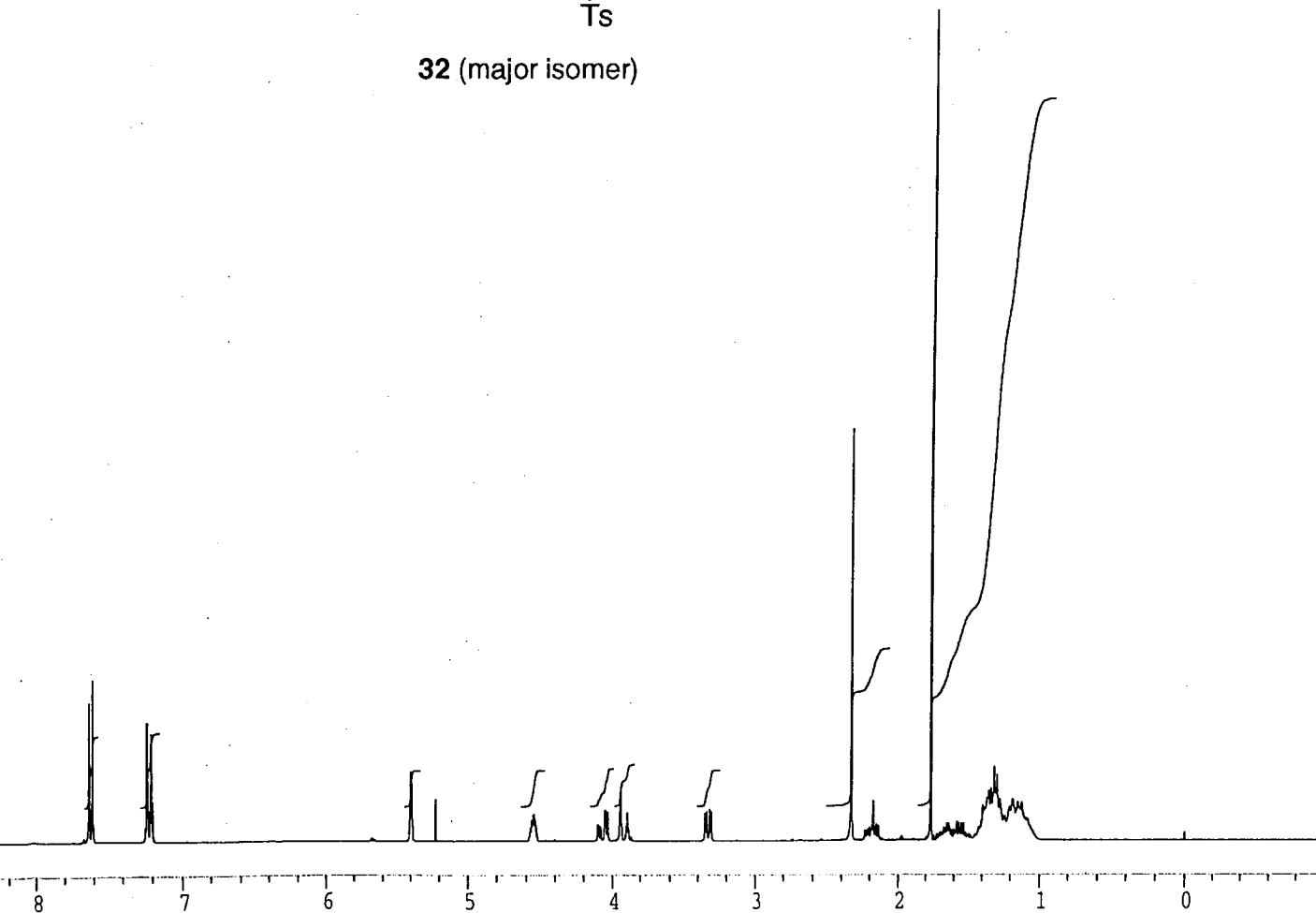
1D NMR plot parameters
 CX 22.10 cm
 CY 14.00 cm
 F1P 250.000 ppm
 F1 18867.15 Hz
 F2P -42.900 ppm
 F2 -3237.60 Hz
 PPMCM 13.25339 ppm/cm
 HZCM 1000.21490 Hz/cm

SZI-SA-135-02

SZI-SB-028-01



32 (major isomer)



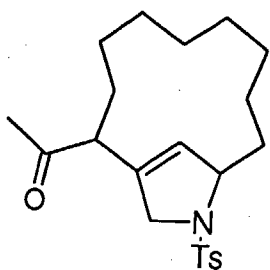
Current Data Parameters
NAME dez04112
EXPNO 10
PROCNO 1
DU mpi
USER szi

F2 - Acquisition Parameters
Date_ 971205
Time 0.47
INSTRUM amx300
PROBHD 5 mm QNP 1H
PULPROG zg30
TD 32768
SOLVENT CDCl3
NS 32
DS 2
SWH 6249.967 Hz
FIDRES 0.190734 Hz
AQ 2.6214900 sec
RG 512
DW 80.000 usec
DE 100.00 usec
TE 302.0 K
HL1 0 dB
D1 1.0000000 sec
P1 6.75 usec
DE 100.00 usec
SFO1 300.1349393 MHz
NUCLEUS 1H

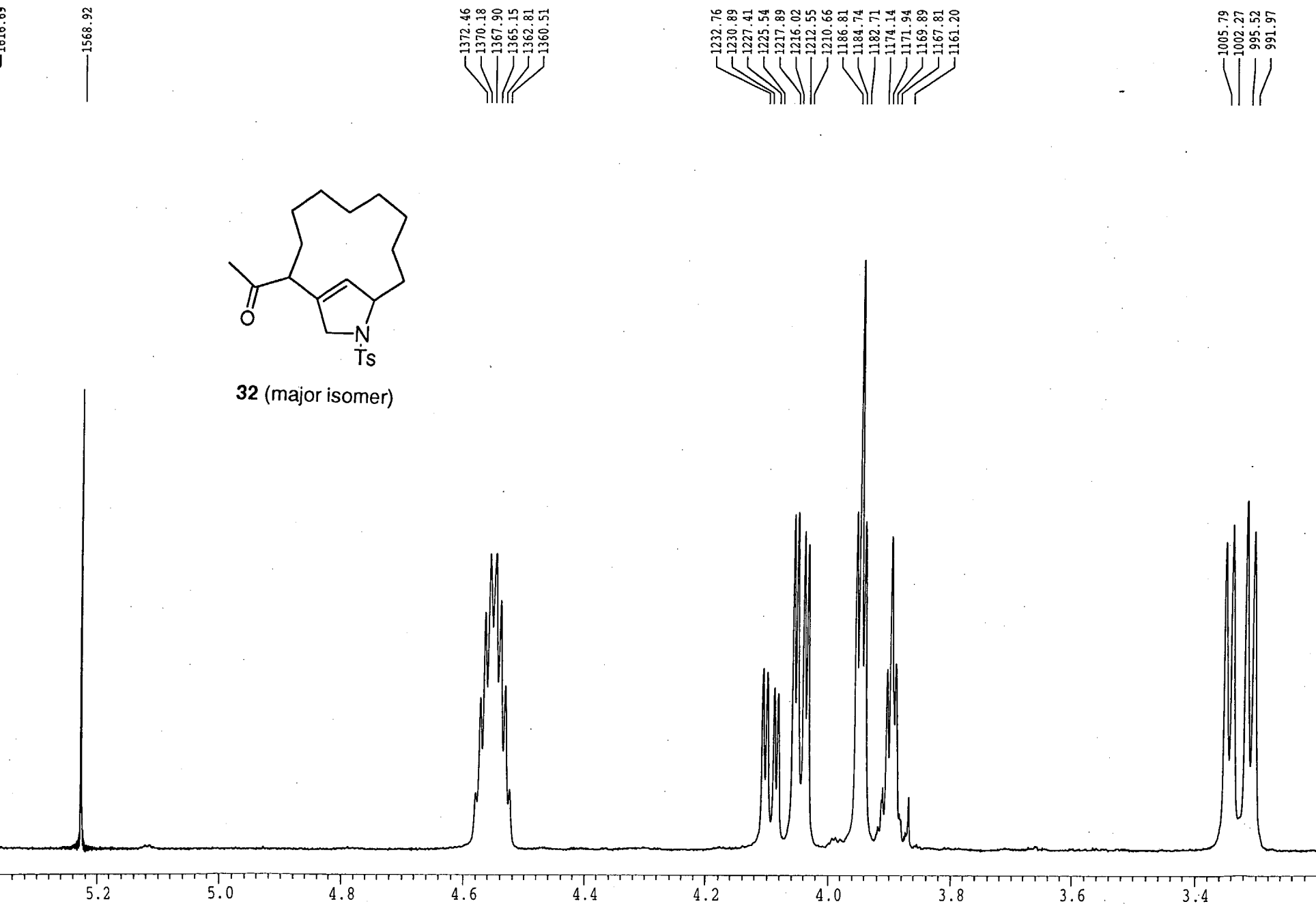
F2 - Processing parameters
SI 32768
SF 300.1333858 MHz
WDW EM
SSB 0
LB 0.00 Hz
GB 0
PC 8.00

1D NMR plot parameters
CX 20.00 cm
F1P 9.000 ppm
F1 2701.20 Hz
F2P -1.000 ppm
F2 -300.13 Hz
PPMCM 0.50000 ppm/cm
HZCM 150.06670 Hz/cm

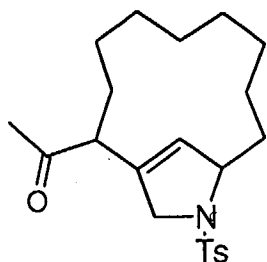
SZI-SB-028-01



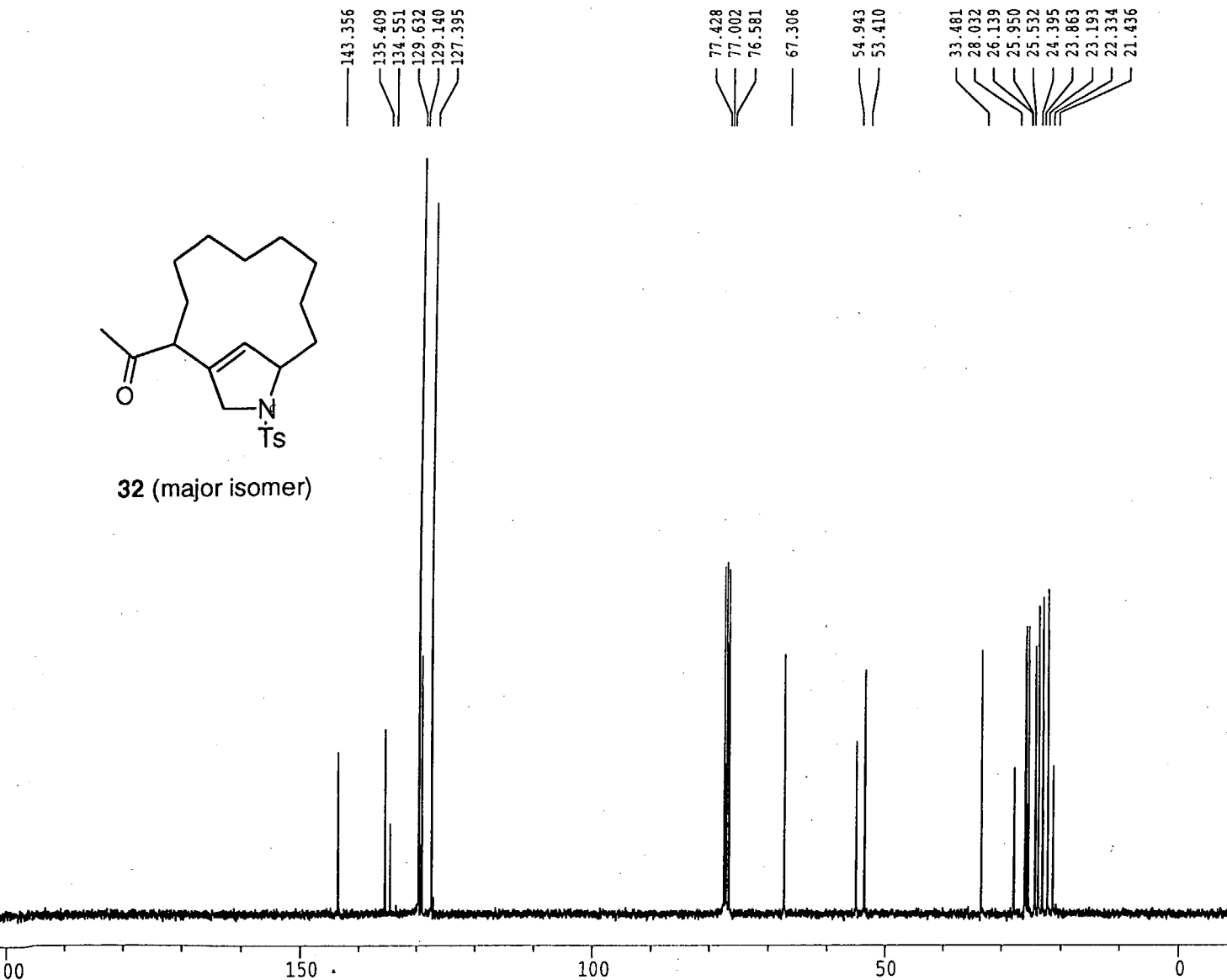
32 (major isomer)



SZI-SB-028-01



32 (major isomer)

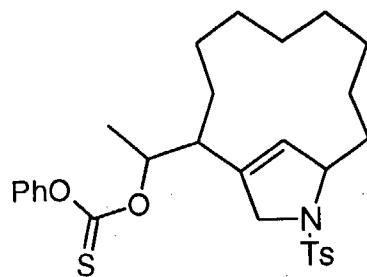


Current Data Parameters
 NAME dez04112
 EXPNO 11
 PROCNO 1
 DU mpi
 USER szi

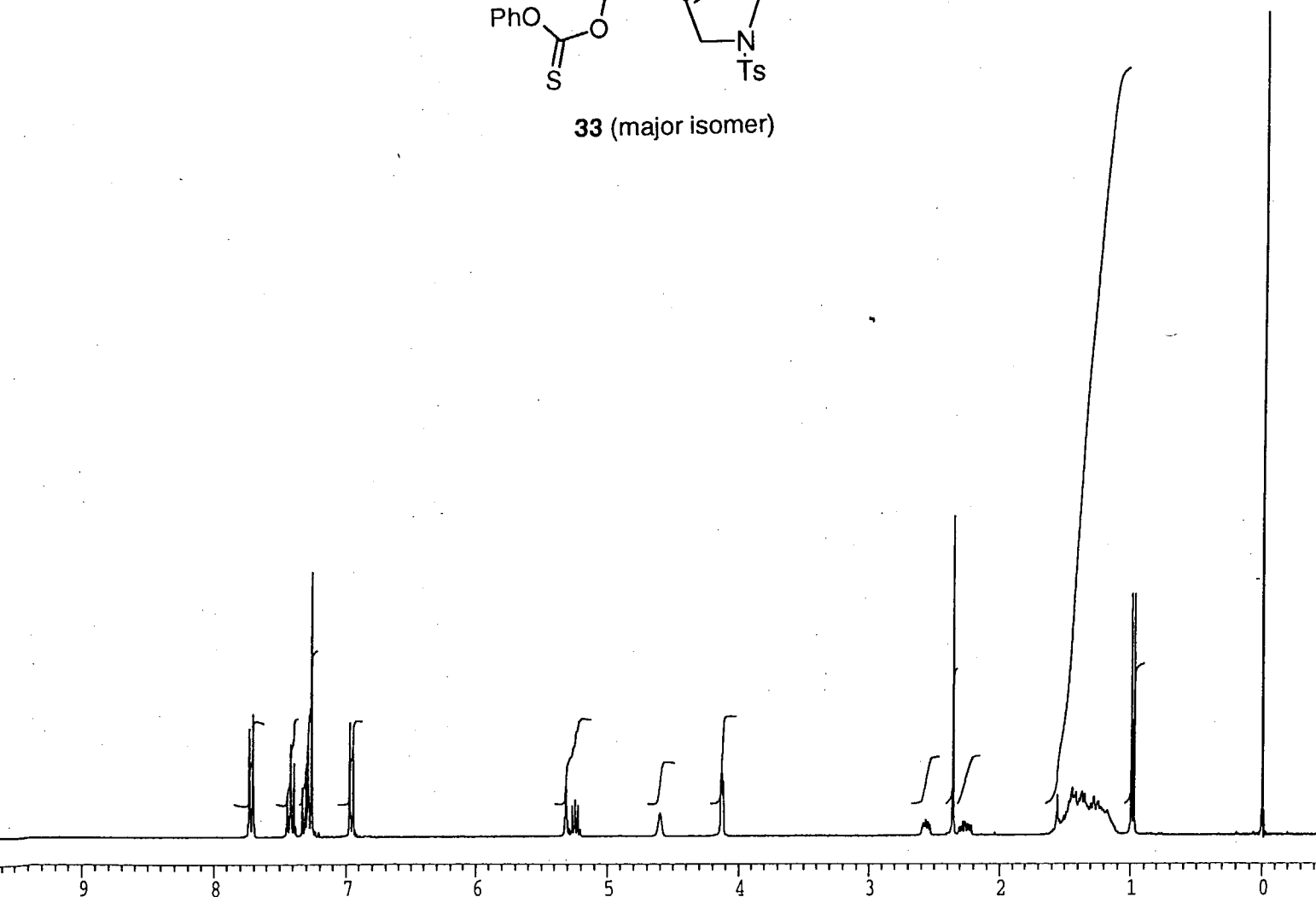
F2 - Acquisition Parameters
 Date_ 971205
 Time 1.17
 INSTRUM amx300
 PROBHD 5 mm QNP 1H
 PULPROG zgdc30
 TD 65536
 SOLVENT CDC13
 NS 8000
 DS 16
 SWH 31249.998 Hz
 FIDRES 0.476837 Hz
 AQ 1.0486259 sec
 RG 32768
 DW 16.000 usec
 DE 22.86 usec
 TE 302.0 K
 D11 0.03000000 sec
 CPDPRG waltz16
 P31 100.00 usec
 S2 27 dB
 HL1 0 dB
 D1 0.03000000 sec
 P1 5.68 usec
 DE 22.86 usec
 SF01 75.4734422 MHz
 NUCLEUS 13C

F2 - Processing parameters
 SI 32768
 SF 75.4685943 MHz
 WDW EM
 SSB 0
 LB 0.80 Hz
 GB 0
 PC 2.00

1D NMR plot parameters
 CX 21.00 cm
 F1P 220.000 ppm
 F1 16603.09 Hz
 F2P -10.000 ppm
 F2 -754.69 Hz
 PPMCM 10.95238 ppm/cm
 HZCM 826.56085 Hz/cm



33 (major isomer)



Current Data Parameters
 NAME mar16101
 EXPNO 10
 PROCNO 1
 DU mpi
 USER szi

F2 - Acquisition Parameters
 Date_ 980316
 Time 10.08
 INSTRUM amx300
 PROBHD 5 mm QNP 1H
 PULPROG zg30
 TD 32768
 SOLVENT CDCl3
 NS 32
 DS 2
 SWH 6249.967 Hz
 FIDRES 0.190734 Hz
 AQ 2.6214900 sec
 RG 1024
 DW 80.000 usec
 DE 100.00 usec
 TE 302.0 K
 HL1 0 dB
 D1 1.00000000 sec
 P1 6.75 usec
 DE 100.00 usec
 SFO1 300.1349393 MHz
 NUCLEUS 1H

F2 - Processing parameters
 SI 32768
 SF 300.1333679 MHz
 WDW EM
 SSB 0
 LB 0.00 Hz
 GB 0
 PC 8.00

1D NMR plot parameters
 CX 22.10 cm
 F1P 10.500 ppm
 F1 3151.40 Hz
 F2P -0.500 ppm
 F2 -150.07 Hz
 PPMCM 0.49774 ppm/cm
 HZCM 149.38765 Hz/cm

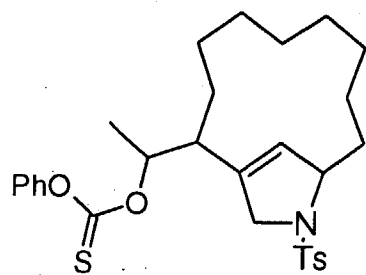
SZI-SB-083-01

SZI-SB-083-01

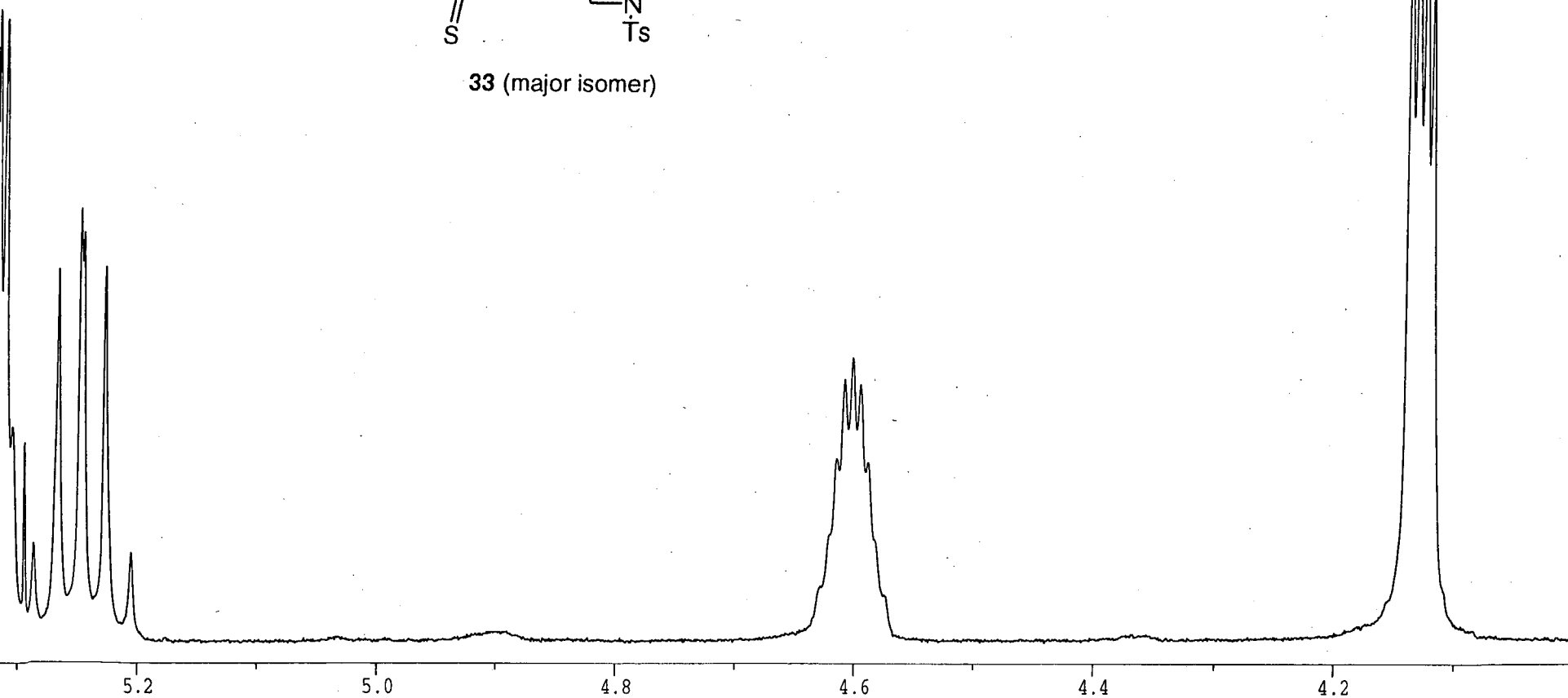
1591.74
1588.81
1586.36
1580.13
1574.60
1573.90
1568.37
1562.14

1385.13
1383.13
1381.12
1379.14
1377.14

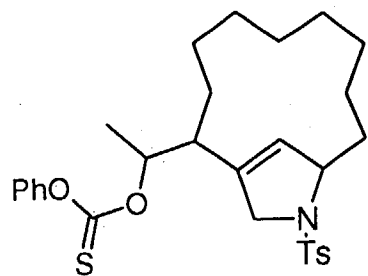
1242.01
1240.14
1238.19
1236.33



33 (major isomer)



193.801
153.010
143.308
136.315
134.458
129.682
129.473
129.211
127.544
126.552
121.678



33 (major isomer)

83.684
77.425
77.001
76.579
66.889
55.417
44.789
33.455
26.709
26.024
25.844
25.190
24.177
23.125
22.636
21.449
17.207
-0.030

NAME mar16101
EXPNO 11
PROCNO 1
DU mpi
USER szi

F2 - Acquisition Parameters

Date_ 980316
Time_ 10.31
INSTRUM amx300
PROBHD 5 mm QNP 1H
PULPROG zgdc30
TD 65536
SOLVENT CDC13
NS 10000
DS 16
SWH 31249.998 Hz
FIDRES 0.476837 Hz
AQ 1.0486259 sec
RG 16384
DW 16.000 usec
DE 22.86 usec
TE 302.0 K
D11 0.03000000 sec
CPDPRG waltz16
P31 100.00 usec
S2 27 dB
HL1 0 dB
D1 0.03000000 sec
P1 5.68 usec
DE 22.86 usec
SFO1 75.4734422 MHz
NUCLEUS 13C

F2 - Processing parameters

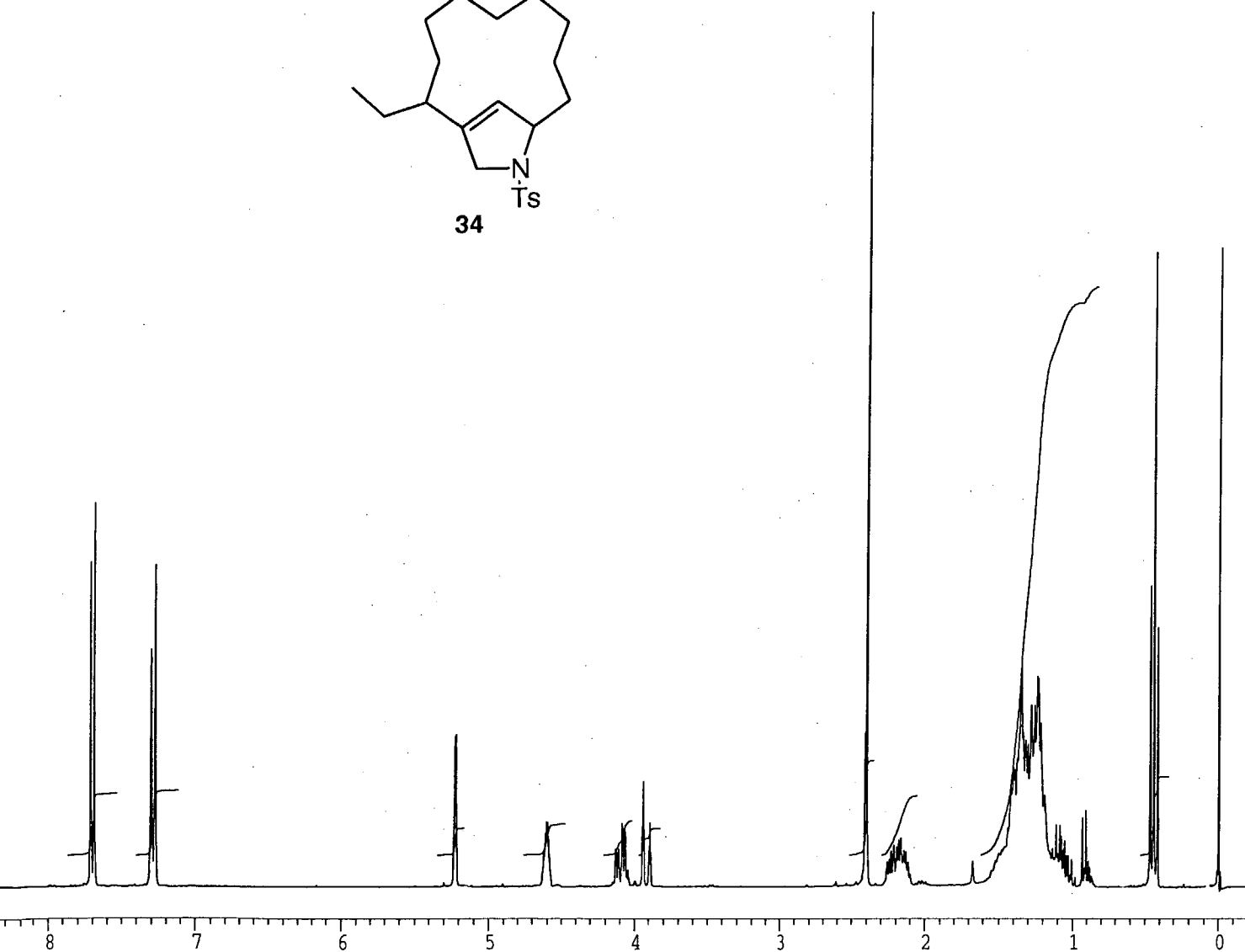
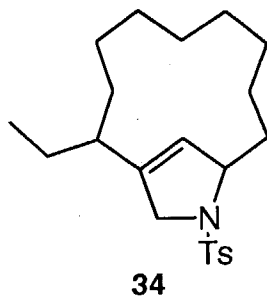
SI 32768
SF 75.4685943 MHz
WDW EM
SSB 0
LB 0.80 Hz
GB 0
PC 2.00

1D NMR plot parameters

CX 22.10 cm
F1P 220.000 ppm
F1 16603.09 Hz
F2P -20.000 ppm
F2 -1509.37 Hz
PPMCM 10.85973 ppm/cm
HZCM 819.56848 Hz/cm

SZI-SB-083-01

SZI-SB-084-01

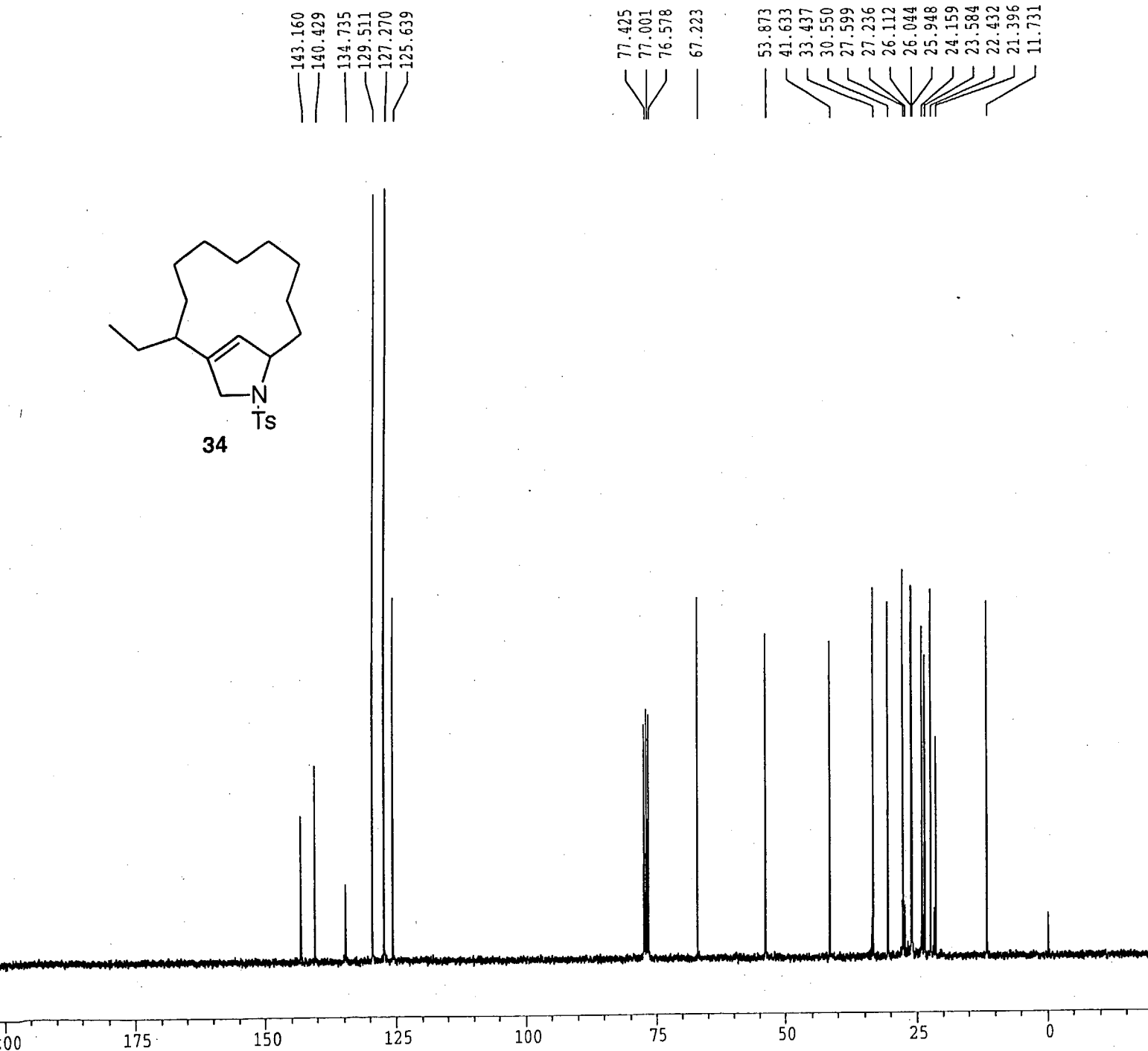
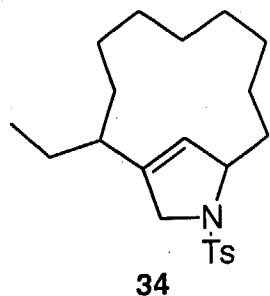


Current Data Parameters
 NAME mz17-018
 EXPNO 10
 PROCNO 1
 DU mpi
 USER szi

F2 - Acquisition Parameters
 Date_ 980317
 Time 17.15
 INSTRUM dpx300
 PROBHD 5 mm QNP
 PULPROG zg30
 TD 32768
 SOLVENT CDCl3
 NS 32
 DS 2
 SWH 6172.839 Hz
 FIDRES 0.188380 Hz
 AQ 2.6542580 sec
 RG 80.6
 DW 81.000 usec
 DE 4.50 usec
 TE 300.0 K
 HL1 90 dB
 D1 1.00000000 sec
 P1 7.30 usec
 DE 4.50 usec
 SFO1 300.1318534 MHz
 NUCLEUS off

F2 - Processing parameters
 SI 16384
 SF 300.1300024 MHz
 WDW no
 SSB 0
 LB 0.00 Hz
 GB 0
 PC 2.00

1D NMR plot parameters
 CX 21.00 cm
 F1P 9.000 ppm
 F1 2701.17 Hz
 F2P -0.200 ppm
 F2 -60.03 Hz
 PPMCM 0.43810 ppm/cm
 HZCM 131.48552 Hz/cm



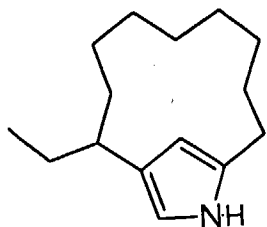
Current Data Parameters
 NAME mzl7-018
 EXPNO 11
 PROCNO 1
 DU mpi
 USER szl

F2 - Acquisition Parameters
 Date_ 980317
 Time 17.47
 INSTRUM dpx300
 PROBHD 5 mm QNP
 PULPROG zgdc30
 TD 65536
 SOLVENT CDC13
 NS 1200
 DS 2
 SWH 21231.422 Hz
 FIDRES 0.323966 Hz
 AQ 1.5434228 sec
 RG 16384
 DW 23.550 usec
 DE 4.50 usec
 TE 300.0 K
 D11 0.03000000 sec
 CPDPRG waltz16
 P31 80.00 usec
 S2 83 dB
 HL1 90 dB
 D1 0.03000000 sec
 P1 6.60 usec
 DE 4.50 usec
 SF01 75.4760670 MHz
 NUCLEUS off

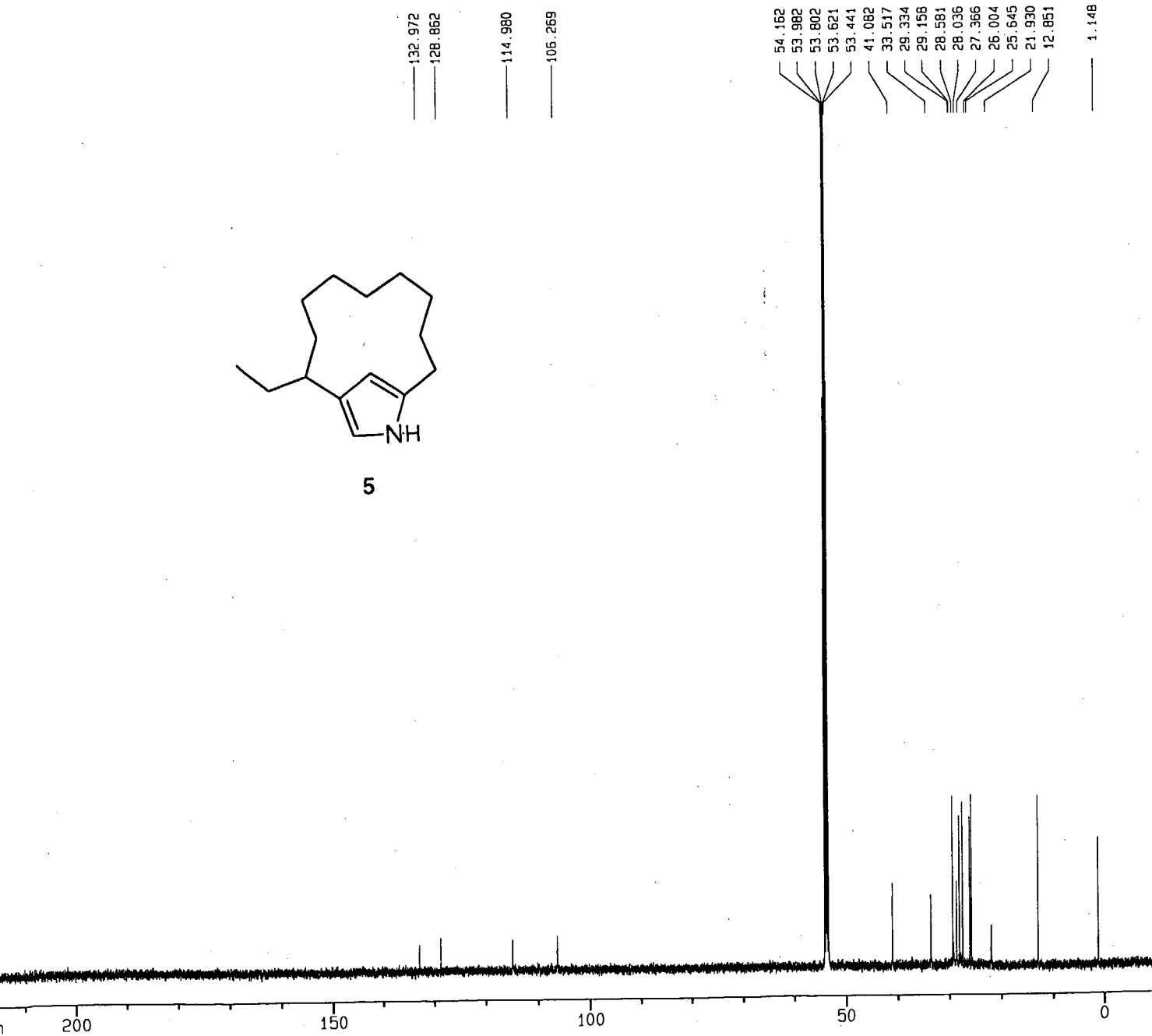
F2 - Processing parameters
 SI 32768
 SF 75.4677524 MHz
 WDW EM
 SSB 0
 LB 1.00 Hz
 GB 0
 PC 1.40

1D NMR plot parameters
 CX 22.00 cm
 F1P 220.000 ppm
 F1 16602.91 Hz
 F2P -20.000 ppm
 F2 -1509.35 Hz
 PPMCM 10.90909 ppm/cm
 HZCM 823.28455 Hz/cm

SZI-SB-084-01



5



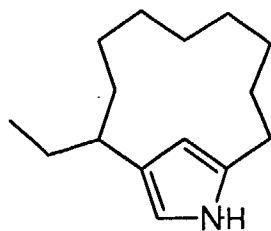
Current Data Parameters
 NAME sz108540
 EXPNO 11
 PROCNO 1
 DU v
 USER wir

F2 - Acquisition Parameters
 Date_ 980402
 Time 23.04
 INSTRUM dmx500
 PROBHD 5 mm TXI 13C
 PULPROG zgpg30
 TD 65536
 SOLVENT CD2C12
 NS 24576
 DS 80
 SWH 37593.984 Hz
 AQ 0.8716788 sec
 RG 16384
 DM 13.300 usec
 DE 4.50 usec
 TE 303.0 K
 D11 0.03000000 sec
 PL12 17.00 dB
 CPDPRG2 waltz16
 PCPD2 80.00 usec
 SF02 600.2217406 MHz
 NUC2 1H
 PL2 0.00 dB
 D1 0.03000000 sec
 P1 16.10 usec
 DE 4.50 usec
 SF01 150.9419346 MHz
 NUC1 13C
 PL1 0.00 dB

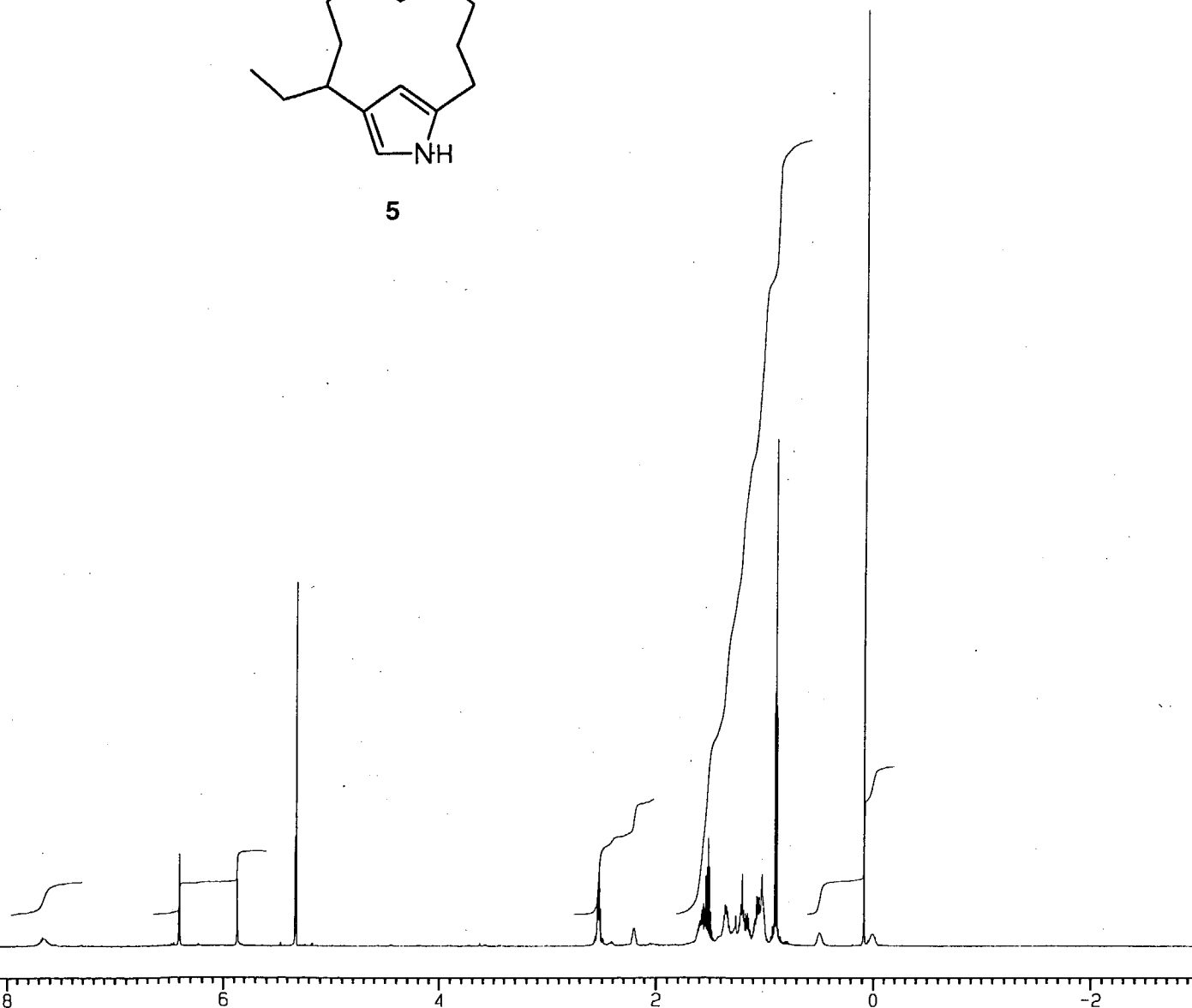
F2 - Processing parameters
 SI 65536
 SF 150.9253777 MHz
 SR -1.31 Hz
 WDW EM
 SSB 0
 LB 1.00 Hz
 GB 0
 PC 2.00

1D NMR plot parameters
 CX 20.00 cm
 CY 30.00 cm
 F1P 220.000 ppm
 F1 33203.58 Hz
 F2P -10.000 ppm
 F2 -1509.26 Hz
 PPMCM 11.50000 ppm/cm
 HZCM 1735.64209 Hz/cm

SZI-SB-085-40



5



Current Data Parameters
 NAME szi08540
 EXPNO 10
 PROCNO 1
 DU v
 USER wir

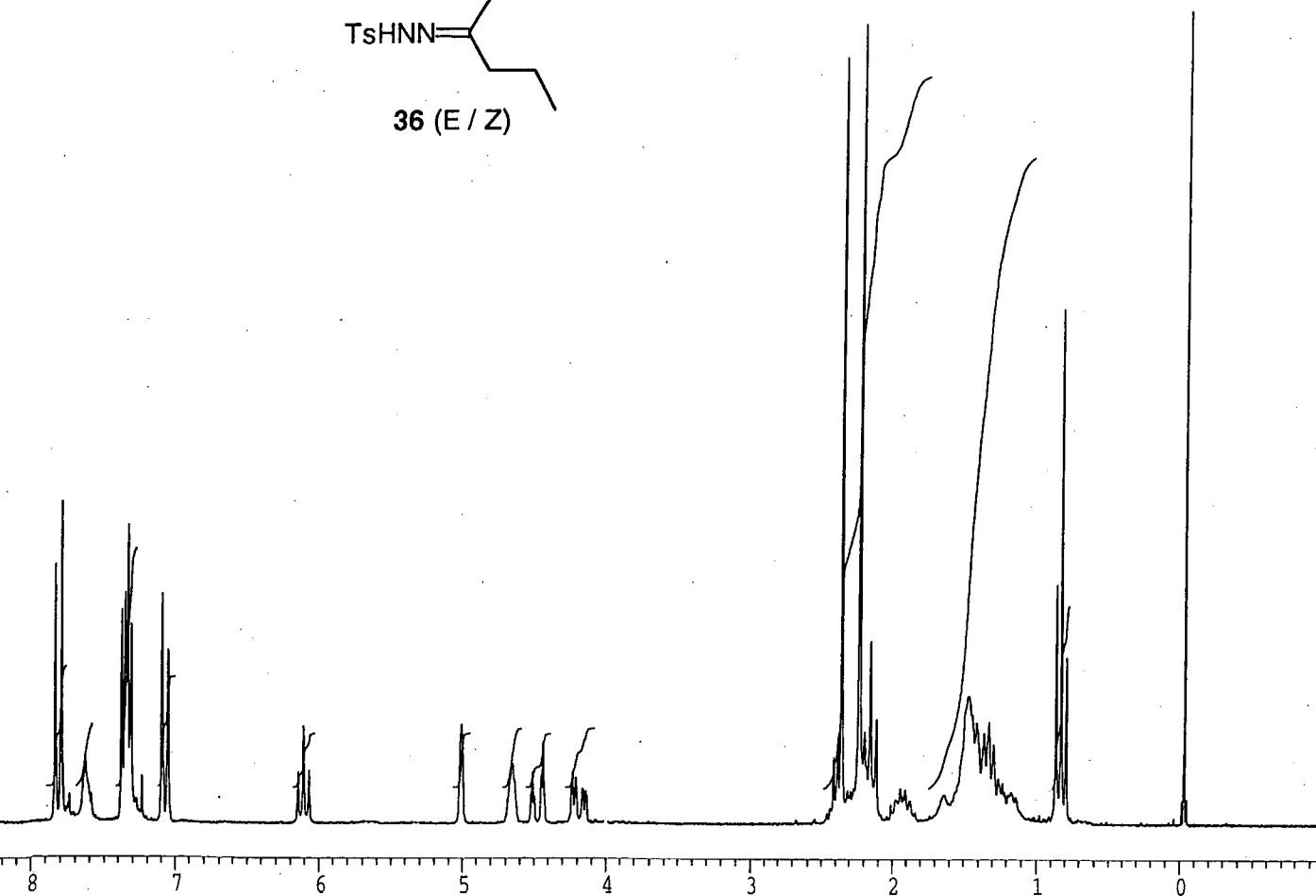
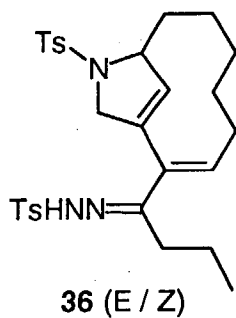
F2 - Acquisition Parameters
 Date_ 980401
 Time 8.40
 INSTRUM dmx600
 PROBHD 5 mm TXI 13C
 PULPROG zg30
 TD 65536
 SOLVENT CD2Cl2
 NS 32
 DS 2
 SWH 12019.230 Hz
 AQ 2.7263477 sec
 RG 256
 DH 41.600 usec
 DE 4.50 usec
 TE 303.0 K
 D1 1.0000000 sec
 P1 9.00 usec
 DE 4.50 usec
 SFO1 600.2230011 MHz
 NUC1 1H
 PL1 0.00 dB

F2 - Processing parameters
 SI 131072
 SF 600.2200219 MHz
 SR 21.87 Hz
 WDW GM
 SSB 0
 LB -0.30 Hz
 GB 0.18
 PC 4.00

1D NMR plot parameters
 CX 20.00 cm
 CY 15.00 cm
 F1P 9.000 ppm
 F1 5401.98 Hz
 F2P -3.000 ppm
 F2 -1800.66 Hz
 PPMCM 0.60000 ppm/cm
 HZCM 360.13202 Hz/cm

SZI-SB-085-40

SZI-SA-096-10



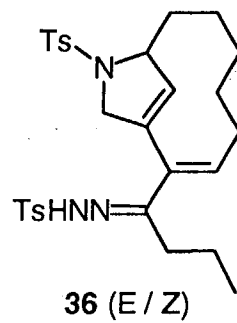
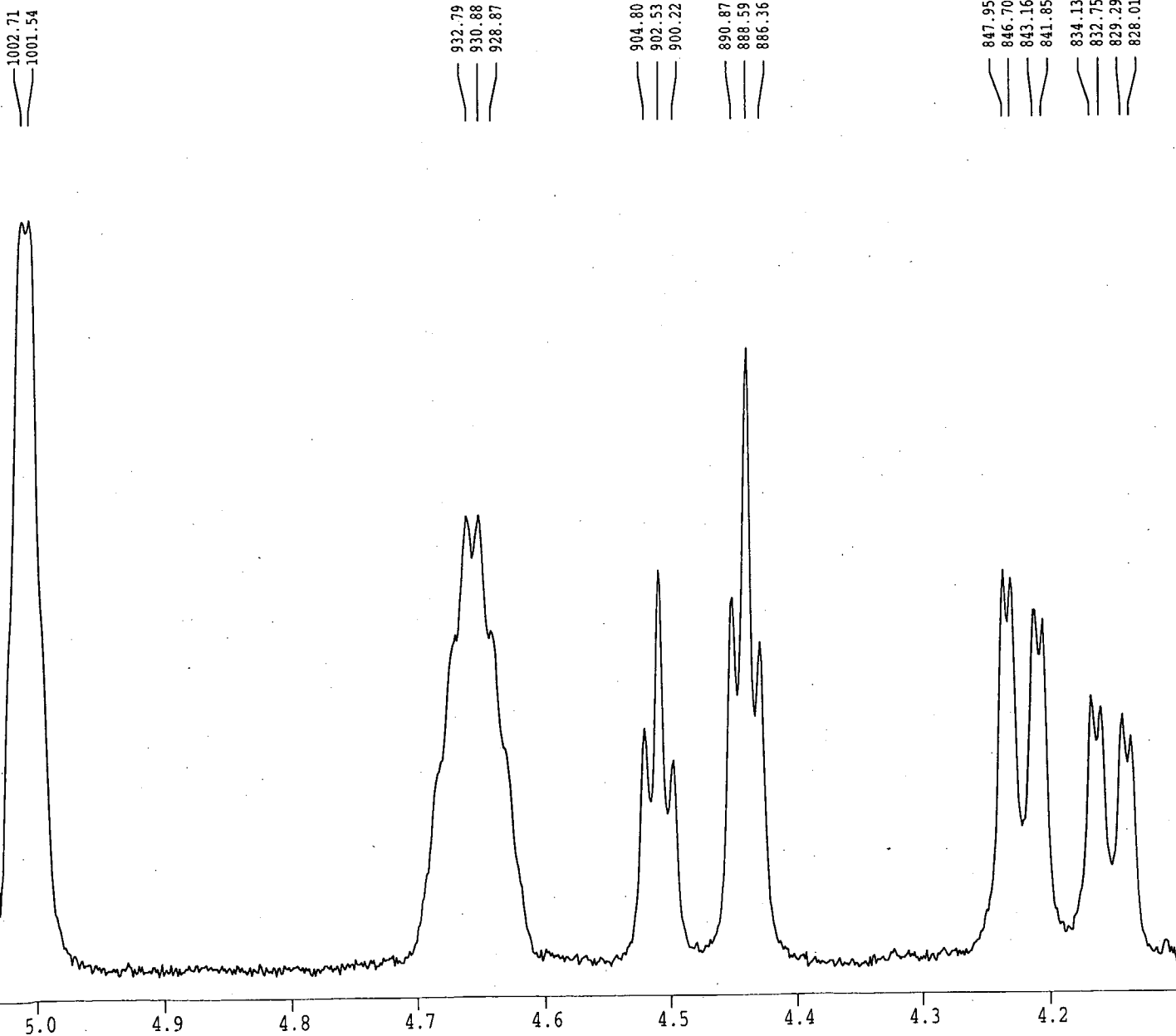
Current Data Parameters
NAME JL160F
EXPNO 111
PROCNO 1
DU mpi
USER szi

F2 - Acquisition Parameters
Date_ 970716
Time 13.50
INSTRUM ac200
PROBHD
PULPROG X59.AU
TD 32768
SOLVENT CDC13
NS 32
DS 0
SWH 4032.258 Hz
FIDRES 0.123055 Hz
AQ 4.0632820 sec
RG 20
DW 124.000 usec
DE 155.00 usec
TE 300.0 K
P1 10.10 usec
HL1 83 dB
D1 1.00000000 sec
DE 155.00 usec
SFO1 200.1332390 MHz
NUCLEUS 1H

F2 - Processing parameters
SI 16384
SF 200.1323445 MHz
WDW no
SSB 0
LB 0.00 Hz
GB 0
PC 0.50

1D NMR plot parameters
CX 20.00 cm
F1P 9.000 ppm
F1 1801.19 Hz
F2P -1.000 ppm
F2 -200.13 Hz
PPMCM 0.50000 ppm/cm
HZCM 100.06617 Hz/cm

SZI-SA-096-10



SZI-SA-096-10

156.289
143.794
143.432
136.709
135.961
135.321
135.022
133.518
130.175
129.635
129.119
127.869
127.037

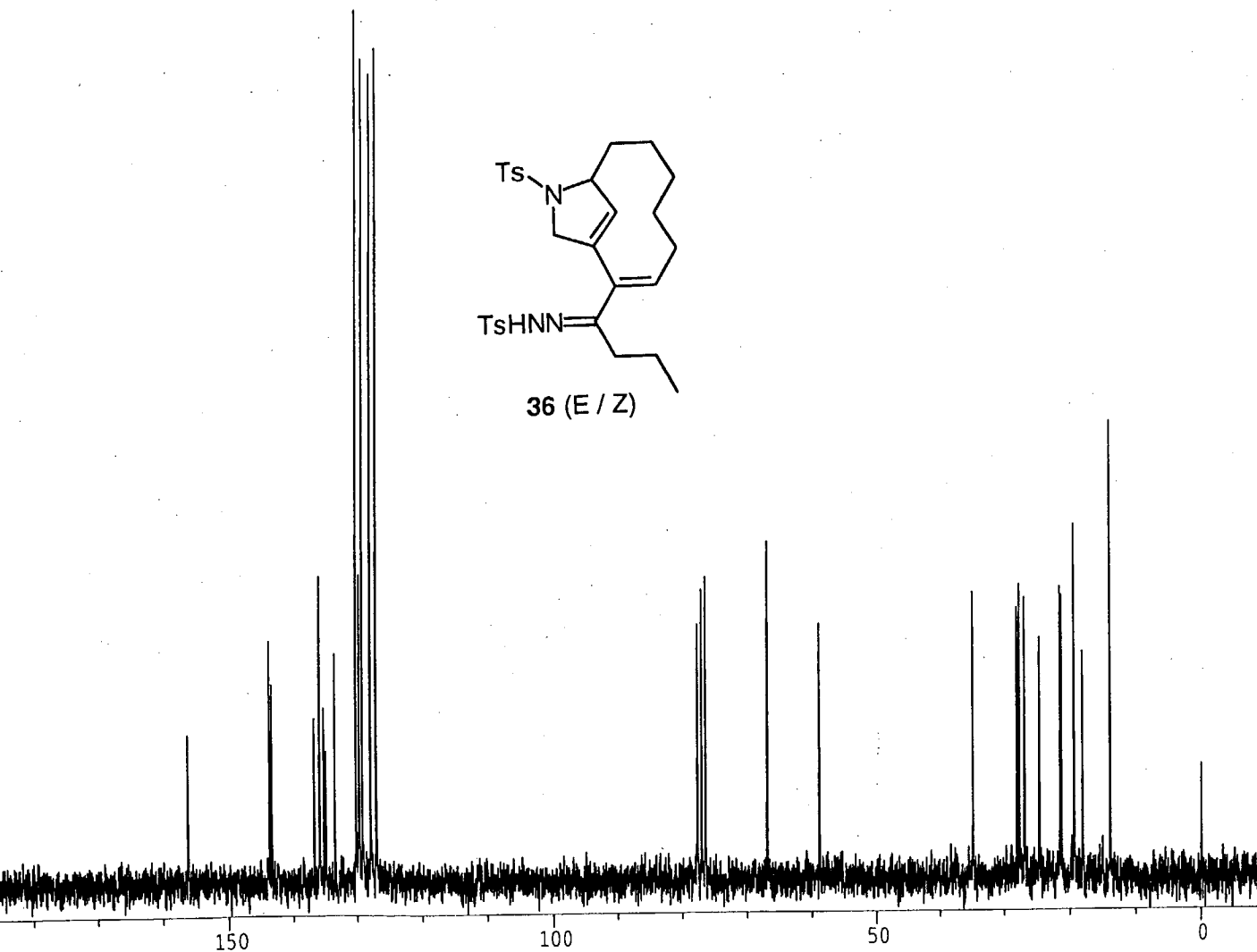
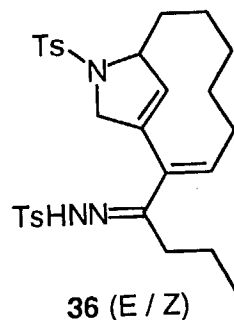
77.629
76.997
76.359

66.797

58.879

34.948
28.136
27.761
27.014
24.677
21.551
21.345
19.359
18.083
14.017

-0.052



Current Data Parameters
NAME JL161F
EXPNO 111
PROCNO 1
DU mpi
USER szi

F2 - Acquisition Parameters
Date_ 970716
Time 14.23
INSTRUM ac200
PROBHD
PULPROG X60.AU
TD 32768
SOLVENT CDC13
NS 1568
DS 0
SWH 14285.714 Hz
FIDRES 0.435965 Hz
AQ 1.1469300 sec
RG 640
DW 35.000 usec
DE 46.30 usec
TE 300.0 K
P1 15.50 usec
HL1 20 dB
D1 0.00100000 sec
DE 46.30 usec
SF01 50.3287650 MHz
NUCLEUS 13C

F2 - Processing parameters
SI 16384
SF 50.3233180 MHz
WDW EM
SSB 0
LB 0.80 Hz
GB 0
PC 2.00

1D NMR plot parameters
CX 20.00 cm
F1P 200.000 ppm
F1 10064.66 Hz
F2P -10.000 ppm
F2 -503.23 Hz
PPMCM 10.50000 ppm/cm
HZCM 528.39484 Hz/cm