

Geographic variation in coal tit song across continents and reduced species recognition between Central European and Mediterranean populations

STEFAN PENTZOLD^{1,2,3}, MARC IMANUEL FÖRSCHLER⁴, DIETER THOMAS TIETZE⁵,
CHRISTOPH RANDLER⁶, JOCHEN MARTENS⁷ & MARTIN PÄCKERT¹

¹ Senckenberg Natural History Collections Dresden, Königsbrücker Landstraße 159, 01109 Dresden, Germany — ² Institute of Biology, University of Leipzig, Talstraße 33, 04103 Leipzig, Germany — ³ Max-Planck-Institute for Chemical Ecology, Hans-Knöll-Str. 8, 07745 Jena, Germany; — ⁴ Black Forest National Park, Kniebisstraße 67, 72250 Freudenstadt, Germany — ⁵ Institute of Pharmacy and Molecular Biotechnology an Heidelberg Center for the Environment, Heidelberg University, Im Neuheimer Feld 364, 69120 Heidelberg, Germany; — ⁶ University of Tübingen, Department of Biology, Auf der Morgenstelle 24, 72076 Tübingen, Germany; — ⁷ Institute of Zoology, University of Mainz, Saarstraße 21, 55099 Mainz, Germany — *corresponding author: martin.paeckert(at)senckenberg.de

Accepted 15.vii.2016.

Published online at www.senckenberg.de/vertebrate-zoology on 28.ix.2016.

Abstract

Intraspecific variation of passerine song may influence mate choice and consequently provides a potential mechanism for premating reproductive isolation in birds. Notable geographic variation of songs is particularly common in widespread bird species, such as the coal tit *Periparus ater* (Aves, Passeriformes, Paridae) having a large trans-Palaearctic distribution range including allopatric populations. In this study, measurement and analysis of 16 song parameters from different Western Palaearctic populations showed a relatively uniform song in all continental European and the island populations of Corsica and Sardinia. Song variation among and within these populations seems so variable that there is a broad geographical overlap of acoustic parameters between populations. However, songs from northwest African and Cypriot populations had lowest minimum frequencies and were thus significantly different from continental European, Corsican and Sardinian populations. To test for intraspecific species recognition and potential acoustic isolation of different Palaearctic populations, we carried out field playback experiments on Central European coal tit males with songs from populations of the Eurasian (Germany, Latvia, Russian Far East, Japan) and the Mediterranean region (northwest Africa, Cyprus, Corsica, Sardinia). Eurasian song types elicited similar strong territorial reactions in Central European coal tits as local control songs. In contrast, none of the Mediterranean songs evoked any notable reaction. Thus, there is geographic variation in coal tit song across continents that coincides with reduced species recognition between Central European and Mediterranean populations.

Key words

Bird song, geographic variation, song parameter, coal tit *Periparus ater*, territorial behaviour, playback experiments, acoustic isolation.

Introduction

Song is an important mean for intra- and interspecific communication in passerine birds. Most often songs have a territorial context and function in mate attraction and stimulation (CATCHPOLE & SLATER 1995, COLLINS 2004). Intraspecific variation of bird songs may reduce species recognition and decrease potential mating success; thus, territorial song is remarkably involved in reproductive isolation mechanisms (SLABBEKOORN &

SMITH 2002). Territorial songs often show geographical differences, which may affect the intensity of a male's territorial response towards unknown song types. Due to enhanced geographical and behavioural changes in small remote populations, passerine song dialects on islands are often remarkably distinct from those of conspecific neighbouring continental populations. Examples include the Corsican finch on Corsica *Carduelis cossi-*

cana (FÖRSCHLER & KALKO 2007), the Cyprus short-toed treecreeper *Certhia brachydactyla dorotheae* (FÖRSCHLER & RANDLER 2009) and the Cyprus wheatear *Oenanthe cypriaca* on Cyprus (RANDLER *et al.* 2012). Such island dialects often elicit weaker territorial responses in continental relatives and may enhance acoustic and behavioural isolation between populations (PÄCKERT & MARTENS 2004). However, acoustic and behavioural differentiation processes throughout a large continental distribution range of a species including marginal allopatric populations are less understood.

A striking example of a passerine bird species with a trans-Palaearctic distribution range is the coal tit *Periparus ater* (Aves, Passeriformes, Paridae). The song among Palaearctic coal tit populations is considered as relatively uniform (LÖHRL & THIELCKE 1973, THIELCKE 1973, MARTENS 1996); however, more recently some variation of song parameters was detected across their southern breeding range and one most divergent island population on Cyprus (TIETZE *et al.* 2011). The intensity of territorial responses towards different song types can be assessed with song playbacks from different geographic origin and can give hints on song divergence and potential reproductive isolation (SLABBEKOORN & SMITH 2002, TIETZE *et al.* 2012, HAGEMEYER *et al.* 2012, PEGAN *et al.* 2015). Playback experiments with Sino-Himalayan coal tit song types may evoke significantly weaker territorial reactions in German populations than local control songs (TIETZE *et al.* 2011). Playbacks on German coal tits with songs of the Afghan coal tit *P. a. melanolophus* and the Afghan great tit *Parus major (cinereus group)* showed that coal tits were able to distinguish between hetero- and conspecific song (THIELCKE 1969). Reverse playbacks on Nepalese coal tits with German songs showed a reduced territorial response (MARTENS 1975) indicating that the test birds were able to distinguish between their own and an alien dialect.

In the light of these previous studies, here we tested whether: (i) coal tit songs from the Mediterranean islands and North Africa differed from continental European songs, and (ii) whether they were less effective stimuli to Central European coal tits in comparison to songs from continental Eurasian populations, (iii) whereas continental Eurasian songs should represent continuous populations. They were thus expected to be similar to each other and should still evoke strong territorial aggressions among different Eurasian populations. We tested these assumptions by statistical analysis of quantifiable song traits and by using playback experiments.

Materials and Methods

Song recording and sonographic analysis

Original recordings (Table 1, Fig. 1) were converted to wav format into a sampling rate of 22.1 kHz with 16 bit

mono and analysed with Avisoft SASLab Light v3.74 (SPECHT 1999). For exemplary recording methods and equipment see MARTENS *et al.* 1999, FÖRSCHLER & KALKO 2007, FÖRSCHLER & RANDLER 2009. The following 16 parameters were measured from all verses per song type and individual (Fig. S1): Length of the verse (Δt), maximum frequency of the verse (f_{\max}), minimum frequency of the verse (f_{\min}), length of the first complete element group (Δt_{EG}) (Suppl. Fig. S1A), length of the element with the largest frequency range within the first complete element group (Δt_{E1}), maximum frequency of that element ($f_{E1\max}$), minimum frequency of that element ($f_{E1\min}$), length of the element with the smallest frequency range within the first complete element group (Δt_{E2}), maximum frequency of this element ($f_{E2\max}$), minimum frequency of this element ($f_{E2\min}$) (Suppl. Fig. S1B), number of elements per verse (n_E), number of element groups per verse (n_{EG}), number of elements per element group ($n_{E/EG}$). In addition, means per song type from the frequency range of the verse ($\Delta f = f_{\max} - f_{\min}$), mean frequency of the verse [$f_{\text{mean}} = (f_{\min} + f_{\max})/2$] and verse speed ($= n_E/\Delta t$) were calculated. In total, 1497 song verses representing 287 song types of 216 males from ten different Western Palaearctic populations were measured and analysed (Table 1). Mean values per song type from the song parameters were calculated and analysed via discriminant analysis using SPSS, version 11.5.

Playback experiments

Song verses were chosen from the original recordings and playback stimuli were designed using Avisoft SASLab Light v3.74 (SPECHT, 1999). 17 song types from various populations of the Palaearctic region were tested (Fig. 1, 2 and Table 1): *Continental Eurasia*: Dresden in East Germany, 2 × North Japan, Russian Far East, Central Latvia; *Northwest Africa*: 2 × North Morocco and 2 × North Tunisia; *Mediterranean Region*: 4 × Cyprus and 2 × Corsica and 2 × Sardinia. Playbacks were performed in Central Europe in coniferous and mixed woods, i.e. in the Dresden Heath (East Germany) and in the Bohemian Switzerland (near Jetřichovice, Czech Republic, 50 km Southeast of Dresden) during the breeding season from 26 March to 6 June 2010. A portable Mini Disc Recorder MD MT-15 from Sharp with a Hama 14461 loudspeaker was placed in the centre of a territory (identified by a singing male) directing upwards and adjusted to natural loudness. Each male was tested only once. The different playbacks were displayed in alteration to avoid a timely bias of our analysis. During one experiment the individual bird was displayed two playbacks. The first playback (= test playback) consisted of one test song from one of the populations mentioned above; it included one single original verse repeated ten times interrupted with 3 s silence each. Then a pause for at least 2 min followed between the playbacks. During this period, territorial reactions were observed and the tested bird could calm down. If the test bird was highly excited and singing intensely

Table 1. Information on song recordings from the Palearctic region used for song analysis or playback experiment, respectively.

SONG ANALYSIS					
region	locality	n males	n verses	recorder	year
East Germany	Dresden Heath	36	280	PÄCKERT	2007
South Germany	Black Forest	22	135	MARTENS, FÖRSCHLER	1989, 1991, 1996, 2000, 2002
Southwest Czech Republic	Bohemian Forest	7	141	MARTENS	1997, 2001, 2003
Austria	Salzburg	4	10	MARTENS	1991
South France	Cevennes	7	49	FÖRSCHLER, MARTENS	1993, 2002
France	Corsica	28	175	MARTENS, FÖRSCHLER, TIETZE	1982, 2001, 2003, 2006
Spain/France	E Pyrenees	32	211	MARTENS, FÖRSCHLER	1994, 1997, 2002
Italy	Sardinia	30	183	FÖRSCHLER	2003
South Greece	Peloponnesos	16	139	MARTENS	2010
Northwest Africa	N Morocco and N Tunisia	17	125	TIETZE, FÖRSCHLER, ECK	2004, 2008
Cyprus	Troodos Mountains	17	49	RANDLER	2008
	<i>total</i>	<i>216</i>	<i>1497</i>		

SONG PLAYBACKS		
region	subspecies	recording locality
EURASIA 0	<i>P. ater labietum</i>	East Germany, Dresden Heath
EURASIA 1	<i>P. a. insularis</i>	North Japan, Sapporo
EURASIA 2	<i>P. a. ater</i>	Russian Far East, Sikhote Alin
EURASIA 3	<i>P. a. ater</i>	Central Latvia, Saulkrasti
EURASIA 4	<i>P. a. insularis</i>	North Japan, Sapporo
NORTHWEST AFRICA 1	<i>P. a. atlas</i>	North Morocco, Ifrane
NORTHWEST AFRICA 2	<i>P. a. ledouci</i>	North Tunisia, Tunis
NORTHWEST AFRICA 3	<i>P. a. atlas</i>	North Morocco, Ifrane
NORTHWEST AFRICA 4	<i>P. a. ledouci</i>	North Tunisia, Tunis
CYPRUS 1	<i>P. a. cypristes</i>	Cyprus, Troodos mountains
CYPRUS 2	<i>P. a. cypristes</i>	Cyprus, Troodos mountains
CYPRUS 3	<i>P. a. cypristes</i>	Cyprus, Troodos mountains
CYPRUS 4	<i>P. a. cypristes</i>	Cyprus, Troodos mountains
CORSICA/SARDINIA 1	<i>P. a. sardus</i>	France, Corsica, Illarata
CORSICA/SARDINIA 2	<i>P. a. sardus</i>	Italy, Sardinia, Limbara
CORSICA/SARDINIA 3	<i>P. a. sardus</i>	France, Corsica, Illarata
CORSICA/SARDINIA 4	<i>P. a. sardus</i>	Italy, Sardinia, Limbara
CONTROL	<i>P. ater labietum</i>	South Germany, Black Forest



Fig 1. Map of the Palearctic region showing the origin of song recordings used for song analysis and playback experiments.

the second playback was not started until the bird had stopped singing and departed. Afterwards, the second playback (= control playback) was tested, which consist-

ed of a local control song (Black Forest, South Germany) and included one single original verse repeated ten times interrupted by 3 s silence each. The control was applied

to generally verify the presence of a territorial male at the experimental sites and to give a further estimate of the mean territorial reaction of local males to a German test song. In total, 289 double playback experiments (including test and control playback) were performed, i.e. the playback of each population was tested 17 times. For quantification of the territorial reactions, the following behaviours were recorded, all scoring one point each: approach to at least 10 to 5 m, successive approach to 5 to 0 m, vertical approach (i.e. down from the tree top to at least the lower half of the tree), display of territorial song, change of song type and display of calls. Accordingly, the maximum score for the intensity of territorial reactions was 6 points. For statistical analysis, mean reactions between pooled populations (Eurasia, Northwest Africa, Cyprus and Corsica/Sardinia) were tested against each other for significance by Mann-Whitney Rank Sum Test using SPSS 11.5.

Results

Song of Northwest African and Cypriot coal tits differs from European populations

Nine discriminant functions (DF) contributed to the analysis in a stepwise procedure and explained a cumulative 100 % of the variance. The first two functions had an eigenvalue higher than one indicating a good among-group differentiation: DF1 (eigenvalue 2.044) explained 52.5 % of the variance and Wilks' λ was 0.08. DF2 with an eigenvalue of 1.151 explained 29.6 % of the variance and Wilks' λ was 0.244 (Fig. 3). DF1 showed the highest correlations to three song parameters (significantly negative correlation): maximum frequencies of the verse f_{\max} (-0.625), of the first element $f_{E1\max}$ (-0.560) and of the second element $f_{E2\max}$ (-0.456). A single song parameter correlated most strongly to DF2: minimum frequency of the verse f_{\min} (0.538). Thus, both discriminant functions were mainly determined by frequency parameters. The predicted group affiliation assigned 56.4 % of all song types correctly to the respective population (origin of recording) with Northwest Africa (65.0 %), Dresden (73.3 %) and Cyprus (84.2 %) showing the highest values of correct assignment. Coal tits from the population of Dresden and Northwest Africa showed the highest maximum frequencies of the verse and the first two elements (Fig. 3). Population mean value for the verse maximum frequency was 8.6 kHz for Dresden and 7.5 kHz for Northwest Africa. Coal tits from Northwest Africa and Cyprus had the lowest minimum frequencies with respect to DF2 (population mean values 2.6 kHz and 2.5 kHz). The remaining populations formed one group and can rather be characterised by intermediate maximum and minimum frequency values.

Central European coal tit populations do not respond to Mediterranean songs

The intensity of territorial responses of Central European coal tits towards playbacks from populations of the Eurasian and the Mediterranean region differed greatly depending on the geographic origin of the tested playback (Fig. 4). Verses from Eurasia (Latvia, Germany, the Russian Far East and Japan) elicited strong territorial reactions in Central European coal tits. Most of these Eurasian songs evoked similarly strong reactions as the control song from South Germany. Importantly, none of the twelve Mediterranean verses (Northwest Africa, Cyprus, Corsica and Sardinia) evoked any notable territorial reaction in Central European coal tits. Comparison of mean reaction scores of all five Eurasian songs *versus* each set of Mediterranean songs (Northwest Africa, Cyprus or Corsica/Sardinia) as well as *versus* all Mediterranean songs taken together showed highly significant differences ($P < 0.001$, Mann-Whitney Rank Sum Test; Fig. 4).

Discussion

The song analysis showed that the allopatric populations from Northwest Africa and Cyprus diverged from other continental European and some Mediterranean populations by frequency differences. Our finding that the most southern populations from Northwest Africa and Cyprus have lower minimum frequencies than the remaining populations indicates some degree of geographical song variation in coal tits. So far, it has only been known that Northwest African coal tits have distinct alarm calls (LÖHRL & THIELCKE 1973), and that Cypriot coal tits may sing lower-pitched than continental coal tits (GOLLER 1987, CRAMP *et al.* 1993, GOSLER & CLEMENT 2007). A possible explanation for the distinctiveness of the Cypriot and Northwest African song might be their long time of geographic separation. Both populations represent the oldest genetic lineage splits in the Western Palearctic while the island populations from Sardinia and Corsica are more closely related to the Southwest continental European *abietum* lineage and thus represent more recent colonisations (TIETZE *et al.* 2011, PENTZOLD *et al.* 2013). The closer phylogenetic relationships of the latter populations were paralleled by song variation as in our song analysis Corsican and Sardinian populations clustered with those from continental Europe. Surprisingly, Corsican and Sardinian songs did not elicit notable territorial responses in Central European coal tits. It is therefore likely that coal tit songs contain subtle response-eliciting parameters such as slight frequency modulation of elements that was not assessed in our acoustic analysis. In common chiffchaffs *Phylloscopus collybita* for

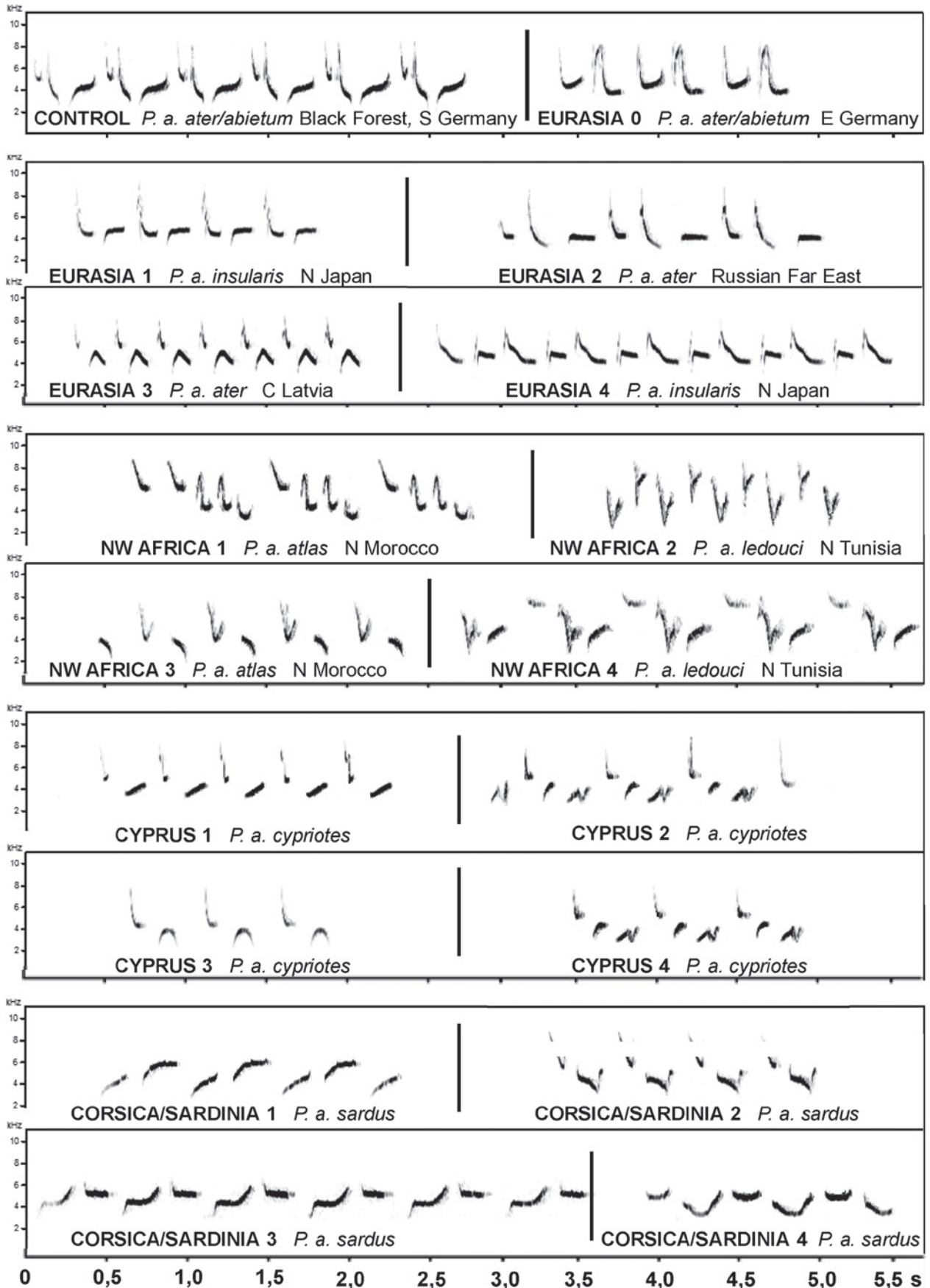


Fig. 2. Territorial song verses of coal tit males used for playback experiments. Verses are shown in frequency (kHz) versus time (s). Playback experiments were carried on territorial coal tit males in E Germany.

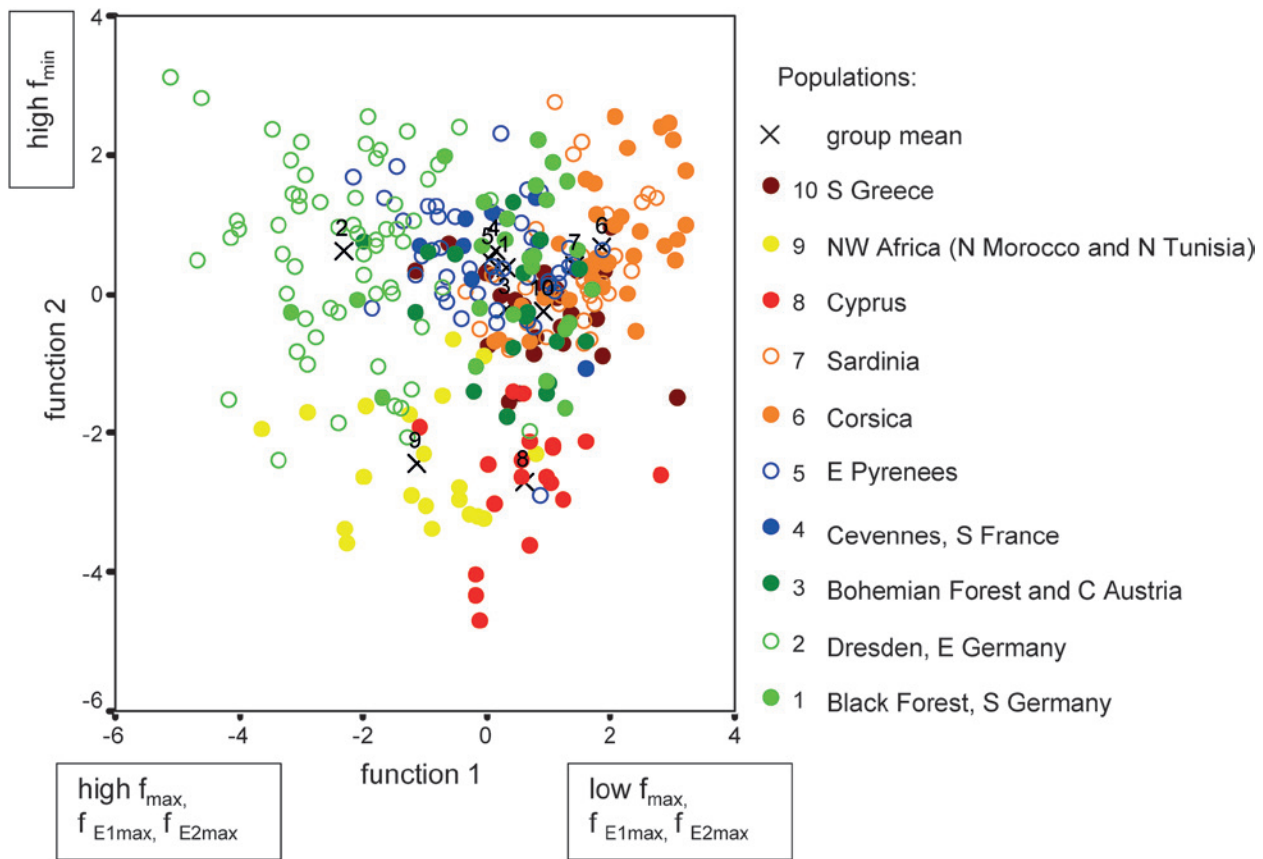


Fig. 3. Scatterplot of the first two discriminant functions from the 16 sonographic parameters of ten coal tit populations. One dot represents one song type of one individual. Each population is colour-coded.

example, slight element modulations and the inclination, i.e. ascent and descent of the frequency course, of single elements are crucial for species recognition (BECKER *et al.* 1980). In areas of sympatry, black-capped chickadees *Poecile atricapillus* and mountain chickadees *P. gambeli* presumably distinguish among conspecific and hetero-specific songs by note-frequency ratios and the presence *versus* absence of an introductory note (LOHR 2008).

Frequency parameters of song as well as temporal parameters can also have an adaptive component and might show a broad variation across a species' range in dependence of vegetation density and openness of habitat for example (MARTENS 1996, RHEINDT *et al.* 2004, TOBIAS *et al.* 2010). Adaptation might play a role in coal tit song variation, too, because throughout the Mediterranean range coal tits might occupy different breeding habitats than in the northern Eurasian range such as oak forests and even macchia in the South compared to boreal forests in the North (CRAMP *et al.* 1993). Therefore, greater song diversification in the South of the coal tits breeding range (this study and TIETZE *et al.* 2011) might relate to multi-fold effects of long-term separation of allopatric populations (Northwest Africa and Cyprus) and local adaptation to different habitats.

Territorial songs from isolated and island populations often differ from those of continental relatives (FÖRSCHLER & KALKO 2007) and thus may lack response-

eliciting parameters when testing in continental populations. This has been shown by playback experiments for songs of several Azorean and Canarian subspecies of the goldcrest, *Regulus regulus* (PÄCKERT & MARTENS 2004, PÄCKERT 2006), songs of Afrocanarian blue tits from La Palma *Parus teneriffae palmensis* (SCHOTTLER 1995), songs of the Canary Island chiffchaff *Phylloscopus canariensis* (THIELCKE *et al.* 1978) as well as for *Oe. cypriaca* with playbacks of the closely related black-eared wheatear *Oe. hispanica* (RANDLER *et al.* 2012). The more divergent song parameters are, the more species recognition decreases and the more the degree of premating reproductive isolation between population increases (SEARCY *et al.* 1997, NELSON 1998). Central European coal tits reacted significantly weaker to song playbacks from Mediterranean populations (Northwest Africa, Cyprus, Corsica/Sardinia) than to playbacks from continental Eurasian populations. This lack of an adequate territorial response may indicate premating acoustic isolation between Central European and Mediterranean coal tits; however, reverse playback experiments would be necessary to further support this notion. It is noteworthy that tested populations may be separated spatially up to 10,000 km (e.g. Russian Far East and Japan *versus* Europe). Our findings are consistent with another study showing that Central European coal tits may still react strongly to single song types from China and the

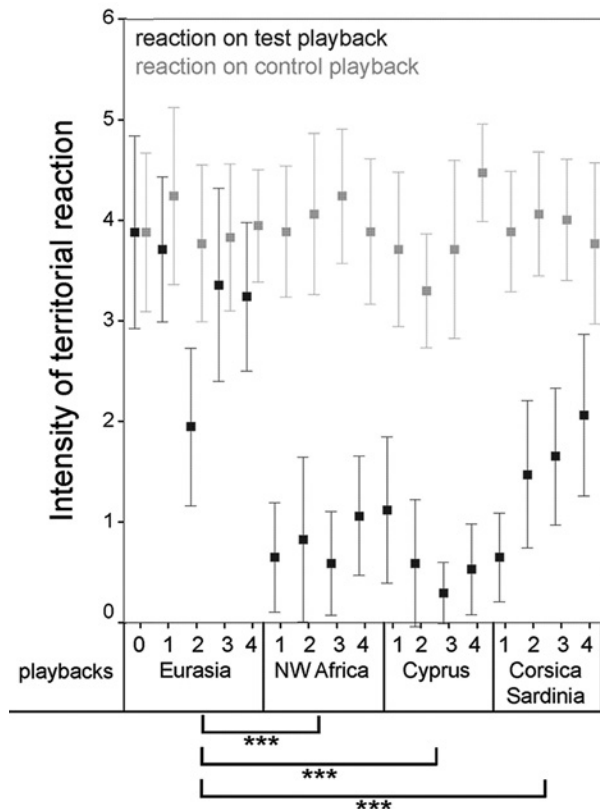


Fig. 4. Intensity of the territorial reaction of East German coal tit males towards conspecific playbacks from different Paelearctic regions. Squares indicate mean values and bars indicate 95% confidence intervals of the reaction. The control is a local verse from the Black Forest, South Germany. Mean reactions between two pooled populations, i.e. Eurasia versus Northwest Africa, Eurasia versus Cyprus and Eurasia versus Corsica/Sardinia were significantly different as indicated by *** ($P < 0.001$, Mann-Whitney Rank Sum Test).

Himalayas (TIETZE *et al.* 2011 – however, territorial response to most Asian song types was greatly reduced). In contrast, within the Paelearctic region, a decrease in reaction intensity with geographical distance of song origin was shown between Central European and Eastern Eurasian Yellowhammers *Emberiza citrinella* (TIETZE *et al.* 2012) and between Central European and allopatric Eastern Eurasian populations of goldcrests *Regulus regulus* (MARTENS *et al.* 1998).

The broad among- and within-population variation of Eurasian coal tit song among our study taxa was also confirmed for the large trans-continental Eurasian range of the species including allopatric Himalayan and Chinese subspecies (TIETZE *et al.* 2011). The relative uniformity of coal tit song strongly contrasts the genetic diversification reflected by eight mitochondrial lineages (TIETZE *et al.* 2011). In the Western Paelearctic four lineages exist: one in North Africa, one on Cyprus and two on the European continent that form a broad secondary contact zone in Central Europe (MARTENS *et al.* 2006, PENTZOLD *et al.* 2013). Thus, song differentiation does not parallel genetic differentiation in the coal tit populations, maybe be-

cause song characteristics have evolved slower than one could expect from strongly structured phylogeographic genetic patterns. A similar scenario was found in the recently diverged sister species pair the orchard *Icterus spurius* and Fuertes' orioles *I. fuertesi*, which are genetically distinct, but do not show discernible differences in their song (BAKER *et al.* 2003, HAGEMeyer *et al.* 2012). However, when compared to other Paelearctic tit species the relative uniform coal tit songs stand out as an exception from the rule. Diversification among genetic lineages corresponds well to distinct song types for example in *Cyanistes* blue tits such *C. caeruleus*, *C. cyanus* and *C. teneriffae* (MARTENS 1996, SALZBURGER *et al.* 2002a, PÄCKERT 2015) and in great tits *Parus major sensu lato* including Asian *P. minor*, *P. cinereus* and *P. bokharensis* (PÄCKERT *et al.* 2005). The three strongly distinct song types of Eurasian willow tits *Poecile montanus sensu lato* have a complicated spatial distribution (MARTENS *et al.* 1995, QUAISSER & ECK 2003, PÄCKERT 2015): the presumably ancestral Sino-Japanese song type corresponds well to two strongly diverged Chinese genetic lineages *P. m. weigoldicus* in the South and *P. m. affinis/P. m. stoetzneri* in the North (KVIST *et al.* 2001, SALZBURGER *et al.* 2002b), but does rarely occur in populations of the Russian Altai, too. In contrast, the alpine and the lowland song type are widely distributed throughout the genetically uniform North Paelearctic range, but in the eastern and western marginal populations only one of the two is present, and the two form a mosaic distribution throughout Europe.

Generally, phylogenetic signal of avian vocalizations, particularly of innate calls and innate traits of passerine territorial song is considered to be high (MCCRACKEN & SHELDON, 1997, PÄCKERT *et al.* 2003, 2009; RHEINDT *et al.* 2004, TIETZE *et al.* 2015). For the coal tit, these findings are not confirmed by our results, except that the genetically most diverged Mediterranean lineages from Northwest Africa (subspecies *P. a. atlas* and *P. a. ledouci*) and from Cyprus (subspecies *P. a. cypriotes*) showed differentiation of songs. Taking into account the reduced territorial response of Central European coal tits to Mediterranean song types, it seems that few relevant response-eliciting parameters were not detected in our set of measurements. Trans-Paelearctic variation of such subtle acoustic traits like in coal tit songs would be a challenging focus for future bioacoustics research.

Acknowledgements

This project was supported by the State Ministry of Science and Arts of Saxony (Staatsministerium für Wissenschaft und Kunst Sachsen) under grant (AZ 4-7531.50-02-621-09/1). J.M. acknowledges the Feldbausch Foundation and Wagner Foundation, both at Fachbereich Biologie, Mainz University, for annual travel grants.

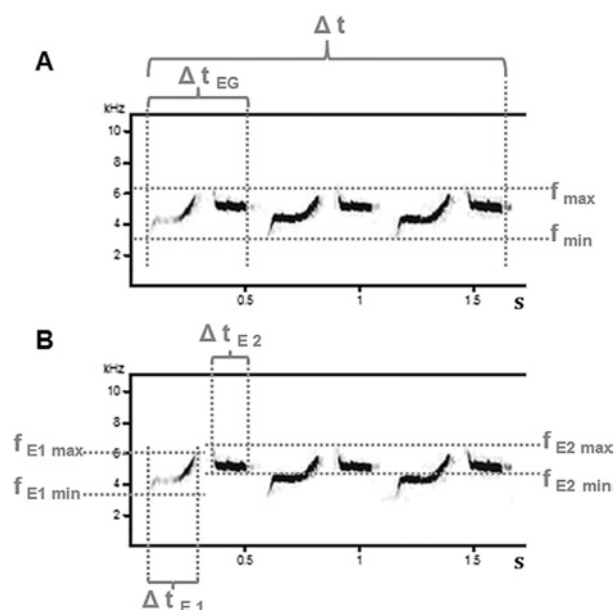
Disclosure Statement: the authors declare no competing financial interests.

References

- BAKER, J.M., LÓPEZ-MEDRANO, E., NAVARRO-SIGÜENZA, A.G., ROJAS-SOTO, O.R., OMLAND, K.E. & FLEISCHER, R.C. (2003): Recent speciation in the orchard Oriole group: divergence of *Icterus spurius spurius* and *Icterus spurius fuertesi*. – *The Auk*, **120**: 848–859.
- BECKER, P.H., THIELCKE, G. & WÜSTENBERG, K. (1980): Der Tonhöhenverlauf ist entscheidend für das Gesangserkennen beim Mitteleuropäischen Zilpzalp (*Phylloscopus collybita*). – *Journal für Ornithologie*, **121**: 229–244.
- CATCHPOLE, C., & SLATER, P. (1995): Bird song: biological themes and variations. Cambridge University Press, Cambridge (UK).
- COLLINS, S. (2004): Vocal fighting and flirting – the functions of birdsong. In P Marler, H Slabbekoorn (Eds.). *Nature's music: the science of birdsong*. p. 39–43. Elsevier, San Diego.
- CRAMP, S., PERRINS, C.M. & BROOKS, D.J. (1993): Handbook of the birds of Europe, the Middle East, and North Africa: the birds of the western Palearctic. Vol. 7, Flycatchers to shrikes. Oxford University Press, Oxford (UK).
- FÖRSCHLER, M. & KALKO, E.K.V. (2007): Geographical differentiation, acoustic adaptation and species boundaries in mainland citril finches and insular Corsican finches, superspecies *Carduelis [citrinella]*. – *Journal of Biogeography*, **34**: 1591–1600.
- FÖRSCHLER, M. & RANDLER, C. (2009): A song analysis of the insular Short-toed Treecreeper, *Certhia brachydactyla dorotheae*, supports its subspecies status. – *Zoology in the Middle East*, **46**: 37–40.
- GOLLER, F. (1987): Der Gesang der Tannenmeise (*Parus ater*): Beschreibung und kommunikative Funktion. – *Journal für Ornithologie*, **128**: 291–310.
- GOSLER, A.G. & CLEMENT, P. 2007. Family Paridae (Tits and Chickadees). In J del Hoyo, A Elliott, DA Christie (Eds.), *Handbook of the Birds of the World*. Vol. 12, p. 662–750. Lynx Edicions, Barcelona.
- HAGEMEYER, N.D.G., STURGE, R.J., OMLAND, K.E. & PRICE, J.J. (2012): Incomplete song divergence between recently diverged taxa: syllable sharing by Orchard and Fuertes' orioles. – *Journal of Field Ornithology*, **83**: 362–371.
- KVIST, L., MARTENS, J., AHOLA, A. & ORELL, M. (2001): Phylogeography of a Palearctic sedentary passerine, the willow tit (*Parus montanus*). – *Journal of Evolutionary Biology*, **14**: 930–941.
- LOHR, B. (2008): Pitch-related clues in the songs of sympatric mountain and black-capped chickadees. – *Behavioural Processes*, **77**: 156–165.
- LÖHRL, H. & THIELCKE, G. (1973): Alarmlaute europäischer und nordafrikanischer Tannenmeisen (*Parus ater ater*, *P. ater atlas*, *P. ater ledouci*) und der Schwarzschofmeise (*P. melanolophus*). – *Journal für Ornithologie*, **114**: 250–252.
- MARTENS, J. (1975): Akustische Differenzierung verwandtschaftlicher Beziehungen in der *Parus (Periparus)*-Gruppe nach Untersuchungen im Nepal-Himalaya. – *Journal für Ornithologie*, **116**: 369–433.
- MARTENS, J. (1996): Vocalizations and Speciation of Palearctic Birds. – In: KROODSMA, D.E. & MILLER, E.H. (Eds.): *Ecology and evolution of acoustic communication in birds*. p. 221–240. Cornell University Press, Ithaca (NY).
- MARTENS, J., ERNST, S. & PETRI, B. (1995): Reviervesänge ostasiatischer Weidenmeisen *Parus montanus* und ihre mikroevolutionäre Ableitung. – *Journal für Ornithologie*, **136**: 367–388.
- MARTENS, J., ECK, S., PÄCKERT, M. & SUN Y.H. (1999): The golden-spectacled warbler *Seicercus burkii* – a species swarm (Aves: Passeriformes: Sylviidae). – *Zoologische Abhandlungen Dresden*, **50**: 281–327.
- MARTENS, J., PÄCKERT, M., NAZARENKO, A., VALCHUK, O. & KAWAJI, N (1998): Comparative bioacoustics of territorial song in the goldcrest (*Regulus regulus*) and its implications for the intrageneric phylogeny of the genus *Regulus* (Aves: Passeriformes: Regulidae). – *Zoologische Abhandlungen Dresden*, **50**: 99–128.
- MARTENS, J., TIETZE, D.T. & SUN, Y.H. (2006): Molecular phylogeny of *Parus (Periparus)*, a Eurasian radiation of tits (Aves: Passeriformes: Paridae). – *Zoologische Abhandlungen (Dresden)*, **55**: 103–120.
- MCCRACKEN, K.G. & SHELDON, F.H. (1997): Avian vocalizations and phylogenetic signal. – *Proceedings of the National Academy of Sciences USA*, **94**: 3833–3836.
- MCGREGOR, P.K. & KREBS, J.R. (1982): Mating and song sharing in the great tit. – *Nature*, **297**: 60–61.
- NELSON, D.A. (1998): Geographic variation in song of Gambel's white-crowned sparrow. – *Behaviour*, **135**: 321–342.
- PÄCKERT, M. (2006): Song dialects as diagnostic characters – acoustic differentiation of the Canary Island Goldcrest subspecies *Regulus regulus teneriffae* Seebohm 1883 and *R. r. ellenthalera* (Aves: Passeriformes: Regulidae). – *Zootaxa*, **1325**: 99–115.
- PÄCKERT, M. (2015): Vom Sinn und Unsinn einer reduktionistischen Biologie. – *Vogelwarte*, **53**: 51–58.
- PÄCKERT, M., BLUME, C., SUN, Y.H., WIE, L. & MARTENS, J. (2009): Acoustic differentiation reflects mitochondrial lineages in Blyth's leaf warbler and white-tailed leaf warbler complexes (Aves: *Phylloscopus reguloides*, *Phylloscopus davisoni*). – *Biological Journal of the Linnean Society*, **96**: 584–600.
- PÄCKERT, M. & MARTENS, J. (2004): Song dialects on the Atlantic islands: goldcrests of the Azores (*Regulus regulus azoricus*, *R. r. sanctae-mariae*, *R. r. inermis*). – *Journal of Ornithology*, **145**: 23–30.
- PÄCKERT, M., MARTENS, J., ECK, S., NAZARENKO, A.A., VALCHUK, O.P., PETRI, B. & VEITH, M. (2005): The great tit (*Parus major*) – a misclassified ring species. – *Biological Journal of the Linnean Society*, **86**: 153–174.
- PÄCKERT, M., MARTENS, J., KOSUCH, J., NAZARENKO, A.A. & VEITH, M. (2003): Phylogenetic signal in the song of Crests and Kinglets (Aves: *Regulus*). *Evolution*, **57**: 616–629.
- PEGAN, T.M., RUMELT, R.B., DZIŁSKI, S.A., FERRARO, M.M., FLESHER, L.E., YOUNG, N., FREEMAN, A.C. & FREEMAN, B.G. (2015): Asymmetric response of Costa Rican White-Breasted Wood-Wrens *Henicorhina leucosticta* to vocalizations from allopatric populations. – *PLoS ONE* **10**, e0144949.
- PENTZOLD, S., TRITSCH, C., MARTENS, J., TIETZE, D.T., GIACALONE, G., VALVO, M.L., NAZARENKO, A.A., KVIST, L., & PÄCKERT, M. (2013): Where is the line? Phylogeography and secondary contact of western Palearctic coal tits (*Periparus ater*: Aves, Passeriformes, Paridae). – *Zoologischer Anzeiger*, **252**: 367–382.
- QUAISSER, C. & ECK, S. (2003): *Parus montanus* Conrad, 1827 – Weidenmeise in Atlas der Verbreitung Paläarktischer Vögel

- (Eds. Eck S, Martens J), Vol. 20, Erwin-Stresemann-Gesellschaft e.V., 14 S.
- RANDLER, C., FÖRSCHLER, M., GONZALEZ, J., ALIABADIAN, M., BAIRLEIN, F. & WINK, M. (2012): Phylogeography, pre-zygotic isolation and taxonomic status in the endemic Cyprus Wheatear *Oenanthe cypriaca*. – *Journal of Ornithology*, **153**: 303–312.
- RHEINDT, F.E., GRAFE, T.U. & ABOUHEIF, E. (2004): Rapidly evolving traits and the comparative methods: how important is testing for phylogenetic signal? – *Evolutionary Ecology Research*, **6**: 377–396.
- SALZBURGER, W., MARTENS, J. & STURMBAUER, C. (2002a): Paraphyly of the blue tit (*Parus caeruleus*) suggested from cytochrome-b sequences. – *Molecular Phylogenetics and Evolution*, **24**: 19–25.
- SALZBURGER, W., MARTENS, J., NAZARENKO, A.A., SUN, Y.H., DALLINGER, R. & STURMBAUER, C. 2002b. Phylogeography of the Eurasian Willow Tit (*Parus montanus*) based on DNA sequences of the mitochondrial cytochrome-b gene. – *Molecular Phylogenetics and Evolution*, **24**: 26–34.
- SCHOTTLER, B. (1995): Songs of Blue Tits *Parus caeruleus palmerensis* from La Palma (Canary Islands) – A test of hypothesis. – *Bioacoustics*, **6**: 135–152.
- SEARCY, W.A., NOWICKI, S., & HUGHES, M. (1997): The response of male and female song sparrows to geographic variation in song. – *Condor*, **99**: 651–657.
- SPECHT, R. (1999): Avisoft-SASLab Light. Version 3.74. Sound Analysis and Synthesis Laboratory, Berlin.
- SLABBEKOORN, H. & SMITH, T.B (2002): Bird song, ecology and speciation. – *Philosophical Transactions of the Royal Society of London. Series B: Biological Sciences*, **357**: 493–503.
- THIELCKE, G. (1969): Die Reaktion von Tannen- und Kohlmeise (*Parus ater*, *P. major*) auf den Gesang nahverwandter Formen. – *Journal für Ornithologie*, **110**: 148–157.
- THIELCKE, G. (1973): Uniformierung des Gesangs der Tannenmeise (*Parus ater*) durch Lernen. – *Journal für Ornithologie*, **114**: 443–454.
- THIELCKE, G., WÜSTENBERG, K. & BECKER, P. (1978): Reaktionen von Zilpzalp und Fitis (*Phylloscopus collybita*, *Ph. trochilus*) auf verschiedene Gesangsformen des Zilpzalps. – *Journal für Ornithologie*, **119**: 213–226.
- TIETZE, D.T., MARTENS, J., SUN, Y.H., LIU SEVERINGHAUS L. & PÄCKERT, M (2011): Song evolution in the coal tit *Parus ater*. – *Journal of Avian Biology*, **42**: 214–230.
- TIETZE, D.T., WASSMANN, C. & MARTENS, J. (2012): Territorial song does not isolate Yellowhammers (*Emberiza citrinella*) from Pine Buntings (*E. leucocephalos*). – *Vertebrate Zoology*, **62**: 113–122.
- TIETZE, D.T., MARTENS, J., FISCHER, B.S., SUN, Y.H., KLUSMANN-KOLB, A. & PÄCKERT, M. (2015): Evolution of leaf warbler songs (Aves: Phylloscopidae). – *Ecology and Evolution*, **5**: 781–798.
- TOBIAS, J.A., ABEN, J., BRUMFIELD, R.T., DERRYBERRY, E.P., HALFWERK, W., SLABBEKOORN, H. & SEDDON, N (2010): Song divergence by sensory drive in Amazonian birds. – *Evolution*, **64**: 2820–2839.

Supplementary



Supplementary Fig. S1. Song verse fragment of *P. a. sardus* showing some of the measured sonographic parameters. A and B represent the same verse. They are shown twice with different parameters of song indicated. For abbreviations, see text.

