

Acta Crystallographica Section E

## Structure Reports

Online

ISSN 1600-5368

## 4-Bromo-2-[(E)-(4-chlorophenyl)imino-methyl]phenol

Amir Adabi Ardakani,<sup>a</sup> Reza Kia,<sup>b\*</sup> Hadi Kargar<sup>c</sup> and Muhammad Nawaz Tahir<sup>d\*</sup><sup>a</sup>Islamic Azad University, Ardakan Branch, Iran, <sup>b</sup>X-ray Crystallography Laboratory, Plasma Physics Research Center, Science and Research Branch, Islamic Azad University, Tehran, Iran, <sup>c</sup>Chemistry Department, Payame Noor University, Tehran 19395-4697, I. R. of Iran, and <sup>d</sup>Department of Physics, University of Sargodha, Punjab, Pakistan

Correspondence e-mail: zsrkk@yahoo.com, rkia@srbiau.ac.ir,

dmntahir\_uos@yahoo.com

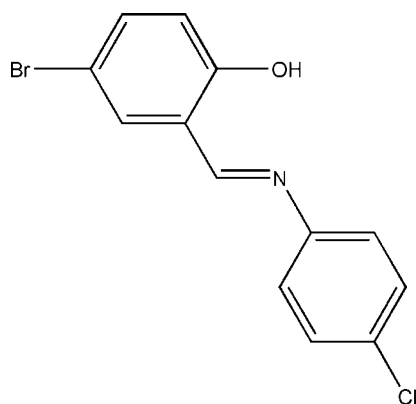
Received 1 February 2011; accepted 6 February 2011

Key indicators: single-crystal X-ray study;  $T = 296$  K; mean  $\sigma(\text{C}-\text{C}) = 0.004$  Å;  $R$  factor = 0.031;  $wR$  factor = 0.078; data-to-parameter ratio = 14.0.

In the title compound,  $\text{C}_{13}\text{H}_9\text{BrClNO}$ , the dihedral angle between the substituted benzene rings is  $43.90(11)^\circ$ . Strong intramolecular  $\text{O}-\text{H}\cdots\text{N}$  hydrogen bonds generate  $S(6)$  ring motifs. The crystal structure features short intermolecular  $\text{Br}\cdots\text{Br}$  [ $3.554(2)$  Å] and  $\text{Cl}\cdots\text{Cl}$  [ $3.412(2)$  Å] contacts. The crystal packing is further stabilized by intermolecular  $\text{C}-\text{H}\cdots\text{O}$  and  $\text{C}-\text{H}\cdots\pi$  interactions.

## Related literature

For standard bond lengths, see: Allen *et al.* (1987). For hydrogen-bond motifs, see: Bernstein *et al.* (1995). For van der Waals radii, see: Bondi (1964).



## Experimental

## Crystal data

 $\text{C}_{13}\text{H}_9\text{BrClNO}$  $M_r = 310.57$ 

Monoclinic,  $P2_1/c$   
 $a = 27.652(11)$  Å  
 $b = 7.011(3)$  Å  
 $c = 6.219(3)$  Å  
 $\beta = 96.38(2)^\circ$   
 $V = 1198.2(8)$  Å<sup>3</sup>

$Z = 4$   
 Mo  $K\alpha$  radiation  
 $\mu = 3.63$  mm<sup>-1</sup>  
 $T = 296$  K  
 $0.35 \times 0.25 \times 0.22$  mm

## Data collection

Bruker SMART APEXII CCD  
 area-detector diffractometer  
 Absorption correction: multi-scan  
 (SADABS; Bruker, 2005)  
 $T_{\min} = 0.363$ ,  $T_{\max} = 0.502$

5719 measured reflections  
 2170 independent reflections  
 1718 reflections with  $I > 2\sigma(I)$   
 $R_{\text{int}} = 0.026$

## Refinement

$R[F^2 > 2\sigma(F^2)] = 0.031$   
 $wR(F^2) = 0.078$   
 $S = 1.02$   
 2170 reflections

155 parameters  
 H-atom parameters constrained  
 $\Delta\rho_{\text{max}} = 0.39$  e Å<sup>-3</sup>  
 $\Delta\rho_{\text{min}} = -0.35$  e Å<sup>-3</sup>

Table 1

Hydrogen-bond geometry (Å, °).

Cg1 is the centroid of the C1–C6 benzene ring.

$D-H\cdots A$	$D-H$	$H\cdots A$	$D\cdots A$	$D-H\cdots A$
$\text{O1}-\text{H1}\cdots\text{N1}$	0.82	1.87	2.594 (3)	147
$\text{C9}-\text{H9}\cdots\text{O1}^{\text{i}}$	0.93	2.60	3.459 (4)	154
$\text{C10}-\text{H10}\cdots\text{Cg1}^{\text{ii}}$	0.93	2.77	3.474 (3)	134
$\text{C13}-\text{H13}\cdots\text{Cg1}^{\text{iii}}$	0.03	2.80	3.501 (3)	133

Symmetry codes: (i)  $x, y, z - 1$ ; (ii)  $x, -y + \frac{3}{2}, z - \frac{1}{2}$ ; (iii)  $x, -y + \frac{1}{2}, z + \frac{1}{2}$ .

Data collection: APEX2 (Bruker, 2005); cell refinement: SAINT (Bruker, 2005); data reduction: SAINT; program(s) used to solve structure: SHELXTL (Sheldrick, 2008); program(s) used to refine structure: SHELXTL; molecular graphics: SHELXTL; software used to prepare material for publication: SHELXTL and PLATON (Spek, 2009).

AAA thanks the Islamic Azad University, Ardakan Branch, for the research facilities (this paper was extracted from a research project). HK thanks the PNU for financial support. RK thanks the Science and Research Branch, Islamic Azad University, Tehran. MNT thanks Sargodha University for the research facilities.

Supplementary data and figures for this paper are available from the IUCr electronic archives (Reference: JH2265).

## References

- Allen, F. H., Kennard, O., Watson, D. G., Brammer, L., Orpen, A. G. & Taylor, R. (1987). *J. Chem. Soc. Perkin Trans. 2*, pp. S1–19.  
 Bernstein, J., Davis, R. E., Shimon, L. & Chang, N.-L. (1995). *Angew. Chem. Int. Ed. Engl.* **34**, 1555–1573.  
 Bondi, A. (1964). *J. Phys. Chem.* **68**, 441–451.  
 Bruker (2005). APEX2, SAINT and SADABS. Bruker AXS Inc., Madison, Wisconsin, USA.  
 Sheldrick, G. M. (2008). *Acta Cryst.* **A64**, 112–122.  
 Spek, A. L. (2009). *Acta Cryst.* **D65**, 148–155.

**supplementary materials**

*Acta Cryst.* (2011). E67, o597 [ doi:10.1107/S1600536811004417 ]

## 4-Bromo-2-[(*E*)-(4-chlorophenyl)iminomethyl]phenol

A. A. Ardakani, R. Kia, H. Kargar and M. N. Tahir

### Comment

Schiff base ligands are one of the most prevalent systems in coordination chemistry. As part of a general study of Schiff bases, we have determined the crystal structure of the title compound.

The asymmetric unit of the title compound, Fig. 1, comprises a potentially bidentate Schiff base ligand. The bond lengths (Allen *et al.*, 1987) and angles are within the normal ranges. The dihedral angle between the substituted benzene rings is 43.90 (11)°. Strong intramolecular O—H...N hydrogen bonds generate *S*(6) ring motifs (Bernstein *et al.*, 1995). The remarkable features of the crystal structure is the intermolecular Br...Br [3.554 (2)Å] and Cl...Cl [3.412 (2)Å] contacts which are shorter than the sum of the van der Waals radii of these atoms (Bondi 1964). The crystal packing is further stabilized by the intermolecular C—H...O hydrogen bond (Table 1) and C—H... $\pi$  interaction [C10—H10...Cg1<sup>ii</sup> = 3.474 (3)Å, (ii) X, 3/2 - Y, -1/2 + Z; C13—H13...Cg1<sup>iii</sup> = 3.501 (3)Å, (iii) X, 1/2 - Y, 1/2 + Z, Cg1 is the centroid of the C1—C6 benzene ring].

### Experimental

The title compound was synthesized by adding 5-bromo-salicylaldehyde (2 mmol) to a solution of *p*-chloroaniline (2 mmol) in ethanol (20 ml). The mixture was refluxed with stirring for half an hour. The resulting light-yellow solution was filtered. Light-yellow single crystals suitable for *X*-ray diffraction were recrystallized from ethanol by slow evaporation of the solvents at room temperature over several days.

### Refinement

H atoms of the hydroxy groups were located by a rotating model and constrained to refine with the parent atoms with  $U_{\text{iso}}(\text{H}) = 1.5 U_{\text{eq}}(\text{O})$ , see Table 1. The remaining H atoms were positioned geometrically with C—H = 0.93 Å and included in a riding model approximation with  $U_{\text{iso}}(\text{H}) = 1.2 U_{\text{eq}}(\text{C})$ .

### Figures

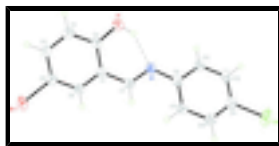


Fig. 1. The asymmetric unit of the title compound, showing 40% probability displacement ellipsoids and the atomic numbering. Intramolecular hydrogen bonds are drawn as dashed lines.

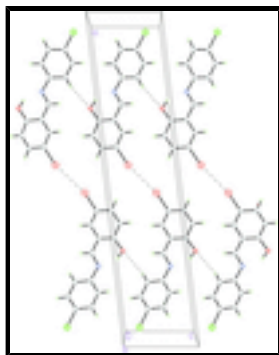


Fig. 2. The packing diagram of the title compound, viewed down the *b*-axis forming sheets through the intermolecular Br $\cdots$ Br and C—H $\cdots$ O interactions. The intermolecular interactions are shown as dashed lines.

#### 4-Bromo-2-[(*E*)-(4-chlorophenyl)iminomethyl]phenol

##### Crystal data

C<sub>13</sub>H<sub>9</sub>BrClNO

*M<sub>r</sub>* = 310.57

Monoclinic, *P*2<sub>1</sub>/*c*

Hall symbol: -*P* 2ybc

*a* = 27.652 (11) Å

*b* = 7.011 (3) Å

*c* = 6.219 (3) Å

β = 96.38 (2)°

*V* = 1198.2 (8) Å<sup>3</sup>

*Z* = 4

*F*(000) = 616

*D<sub>x</sub>* = 1.722 Mg m<sup>-3</sup>

Mo *K*α radiation, λ = 0.71073 Å

Cell parameters from 2520 reflections

θ = 2.5–27.5°

μ = 3.63 mm<sup>-1</sup>

*T* = 296 K

Prism, light-yellow

0.35 × 0.25 × 0.22 mm

##### Data collection

Bruker SMART APEXII CCD area-detector diffractometer

Radiation source: fine-focus sealed tube graphite

φ and ω scans

Absorption correction: multi-scan (*SADABS*; Bruker, 2005)

*T<sub>min</sub>* = 0.363, *T<sub>max</sub>* = 0.502

5719 measured reflections

2170 independent reflections

1718 reflections with *I* > 2σ(*I*)

*R<sub>int</sub>* = 0.026

θ<sub>max</sub> = 25.3°, θ<sub>min</sub> = 1.5°

*h* = -28→33

*k* = -8→5

*l* = -7→6

##### Refinement

Refinement on *F*<sup>2</sup>

Least-squares matrix: full

*R*[*F*<sup>2</sup> > 2σ(*F*<sup>2</sup>)] = 0.031

*wR*(*F*<sup>2</sup>) = 0.078

*S* = 1.02

Primary atom site location: structure-invariant direct methods

Secondary atom site location: difference Fourier map

Hydrogen site location: inferred from neighbouring sites

H-atom parameters constrained

*w* = 1/[σ<sup>2</sup>(*F<sub>o</sub>*<sup>2</sup>) + (0.0399*P*)<sup>2</sup> + 0.3051*P*]

where *P* = (*F<sub>o</sub>*<sup>2</sup> + 2*F<sub>c</sub>*<sup>2</sup>)/3

2170 reflections	$(\Delta/\sigma)_{\max} = 0.001$
155 parameters	$\Delta\rho_{\max} = 0.39 \text{ e } \text{\AA}^{-3}$
0 restraints	$\Delta\rho_{\min} = -0.35 \text{ e } \text{\AA}^{-3}$

*Special details*

**Geometry.** All esds (except the esd in the dihedral angle between two l.s. planes) are estimated using the full covariance matrix. The cell esds are taken into account individually in the estimation of esds in distances, angles and torsion angles; correlations between esds in cell parameters are only used when they are defined by crystal symmetry. An approximate (isotropic) treatment of cell esds is used for estimating esds involving l.s. planes.

**Refinement.** Refinement of  $F^2$  against ALL reflections. The weighted R-factor wR and goodness of fit S are based on  $F^2$ , conventional R-factors R are based on F, with F set to zero for negative  $F^2$ . The threshold expression of  $F^2 > 2\text{sigma}(F^2)$  is used only for calculating R-factors(gt) etc. and is not relevant to the choice of reflections for refinement. R-factors based on  $F^2$  are statistically about twice as large as those based on F, and R- factors based on ALL data will be even larger.

*Fractional atomic coordinates and isotropic or equivalent isotropic displacement parameters ( $\text{\AA}^2$ )*

	x	y	z	$U_{\text{iso}}^*/U_{\text{eq}}$
Br1	0.456428 (11)	0.43271 (5)	0.67549 (5)	0.05153 (14)
Cl1	0.03796 (3)	0.54095 (14)	0.23081 (16)	0.0684 (3)
O1	0.27742 (7)	0.5674 (3)	1.1170 (3)	0.0444 (5)
H1	0.2529	0.5423	1.0354	0.067*
N1	0.22712 (8)	0.4746 (3)	0.7551 (3)	0.0313 (5)
C1	0.31315 (10)	0.4668 (3)	0.7991 (4)	0.0289 (6)
C2	0.31691 (10)	0.5350 (3)	1.0152 (4)	0.0309 (6)
C3	0.36211 (11)	0.5707 (3)	1.1235 (4)	0.0361 (6)
H3	0.3647	0.6166	1.2646	0.043*
C4	0.40322 (11)	0.5392 (3)	1.0256 (4)	0.0363 (6)
H4	0.4336	0.5642	1.1000	0.044*
C5	0.39973 (10)	0.4695 (3)	0.8134 (4)	0.0331 (6)
C6	0.35529 (10)	0.4331 (3)	0.7031 (4)	0.0304 (6)
H6	0.3532	0.3855	0.5628	0.036*
C7	0.26674 (10)	0.4453 (3)	0.6737 (4)	0.0311 (6)
H7	0.2655	0.4091	0.5294	0.037*
C8	0.18255 (10)	0.4827 (3)	0.6229 (4)	0.0298 (6)
C9	0.17902 (10)	0.5621 (3)	0.4151 (4)	0.0332 (6)
H9	0.2069	0.6033	0.3578	0.040*
C10	0.13425 (11)	0.5790 (3)	0.2961 (4)	0.0365 (6)
H10	0.1315	0.6315	0.1579	0.044*
C11	0.09378 (11)	0.5175 (4)	0.3836 (5)	0.0390 (7)
C12	0.09647 (11)	0.4396 (3)	0.5890 (5)	0.0405 (7)
H12	0.0685	0.3987	0.6455	0.049*
C13	0.14112 (10)	0.4237 (3)	0.7077 (4)	0.0334 (6)
H13	0.1434	0.3727	0.8465	0.040*

## supplementary materials

---

### Atomic displacement parameters ( $\text{\AA}^2$ )

	$U^{11}$	$U^{22}$	$U^{33}$	$U^{12}$	$U^{13}$	$U^{23}$
Br1	0.0284 (2)	0.0679 (2)	0.0599 (2)	-0.00058 (15)	0.01204 (13)	-0.00234 (15)
Cl1	0.0355 (5)	0.0899 (7)	0.0749 (6)	0.0049 (5)	-0.0157 (4)	0.0006 (5)
O1	0.0349 (12)	0.0649 (13)	0.0343 (10)	0.0008 (10)	0.0085 (8)	-0.0095 (9)
N1	0.0270 (13)	0.0334 (11)	0.0336 (11)	-0.0016 (10)	0.0041 (9)	0.0012 (9)
C1	0.0319 (16)	0.0250 (12)	0.0299 (13)	0.0014 (11)	0.0035 (10)	0.0002 (10)
C2	0.0323 (16)	0.0308 (13)	0.0305 (13)	0.0023 (12)	0.0080 (11)	0.0014 (11)
C3	0.0433 (18)	0.0353 (14)	0.0284 (13)	-0.0017 (13)	-0.0015 (11)	-0.0030 (11)
C4	0.0323 (17)	0.0362 (14)	0.0386 (14)	-0.0030 (12)	-0.0045 (12)	0.0012 (11)
C5	0.0273 (16)	0.0307 (13)	0.0417 (14)	0.0010 (11)	0.0055 (11)	0.0044 (11)
C6	0.0331 (16)	0.0297 (13)	0.0285 (12)	0.0022 (12)	0.0034 (10)	-0.0002 (10)
C7	0.0343 (16)	0.0293 (13)	0.0300 (12)	-0.0008 (11)	0.0043 (11)	-0.0025 (10)
C8	0.0314 (16)	0.0249 (12)	0.0336 (13)	0.0012 (11)	0.0057 (11)	-0.0015 (10)
C9	0.0321 (16)	0.0346 (14)	0.0338 (13)	-0.0017 (12)	0.0083 (11)	0.0022 (11)
C10	0.0381 (18)	0.0351 (14)	0.0358 (14)	0.0041 (12)	0.0014 (12)	0.0011 (11)
C11	0.0291 (17)	0.0362 (14)	0.0502 (16)	0.0038 (13)	-0.0029 (13)	-0.0057 (13)
C12	0.0298 (17)	0.0396 (15)	0.0531 (17)	-0.0042 (13)	0.0095 (13)	-0.0017 (13)
C13	0.0308 (16)	0.0348 (14)	0.0358 (13)	-0.0013 (12)	0.0087 (11)	0.0036 (11)

### Geometric parameters ( $\text{\AA}$ , $^\circ$ )

Br1—C5	1.886 (3)	C5—C6	1.363 (4)
Cl1—C11	1.728 (3)	C6—H6	0.9300
O1—C2	1.341 (3)	C7—H7	0.9300
O1—H1	0.8200	C8—C13	1.377 (4)
N1—C7	1.273 (3)	C8—C9	1.400 (3)
N1—C8	1.405 (3)	C9—C10	1.375 (4)
C1—C6	1.387 (4)	C9—H9	0.9300
C1—C2	1.420 (3)	C10—C11	1.367 (4)
C1—C7	1.434 (4)	C10—H10	0.9300
C2—C3	1.375 (4)	C11—C12	1.384 (4)
C3—C4	1.366 (4)	C12—C13	1.371 (4)
C3—H3	0.9300	C12—H12	0.9300
C4—C5	1.401 (4)	C13—H13	0.9300
C4—H4	0.9300		
C2—O1—H1	109.5	N1—C7—H7	119.2
C7—N1—C8	120.8 (2)	C1—C7—H7	119.2
C6—C1—C2	119.2 (2)	C13—C8—C9	119.8 (3)
C6—C1—C7	119.5 (2)	C13—C8—N1	118.5 (2)
C2—C1—C7	121.1 (2)	C9—C8—N1	121.5 (2)
O1—C2—C3	118.8 (2)	C10—C9—C8	119.8 (3)
O1—C2—C1	121.7 (2)	C10—C9—H9	120.1
C3—C2—C1	119.5 (3)	C8—C9—H9	120.1
C4—C3—C2	120.6 (2)	C11—C10—C9	119.1 (3)
C4—C3—H3	119.7	C11—C10—H10	120.4

C2—C3—H3	119.7	C9—C10—H10	120.4
C3—C4—C5	120.2 (3)	C10—C11—C12	122.0 (3)
C3—C4—H4	119.9	C10—C11—C11	118.1 (2)
C5—C4—H4	119.9	C12—C11—C11	119.9 (2)
C6—C5—C4	120.2 (3)	C13—C12—C11	118.8 (3)
C6—C5—Br1	119.6 (2)	C13—C12—H12	120.6
C4—C5—Br1	120.2 (2)	C11—C12—H12	120.6
C5—C6—C1	120.3 (2)	C12—C13—C8	120.5 (2)
C5—C6—H6	119.8	C12—C13—H13	119.8
C1—C6—H6	119.8	C8—C13—H13	119.8
N1—C7—C1	121.7 (2)		
C6—C1—C2—O1	-179.0 (2)	C6—C1—C7—N1	180.0 (2)
C7—C1—C2—O1	5.5 (4)	C2—C1—C7—N1	-4.6 (4)
C6—C1—C2—C3	1.5 (3)	C7—N1—C8—C13	149.2 (2)
C7—C1—C2—C3	-173.9 (2)	C7—N1—C8—C9	-35.6 (3)
O1—C2—C3—C4	179.9 (2)	C13—C8—C9—C10	-0.6 (4)
C1—C2—C3—C4	-0.7 (4)	N1—C8—C9—C10	-175.7 (2)
C2—C3—C4—C5	-0.2 (4)	C8—C9—C10—C11	0.0 (4)
C3—C4—C5—C6	0.2 (4)	C9—C10—C11—C12	0.3 (4)
C3—C4—C5—Br1	178.26 (19)	C9—C10—C11—C11	179.82 (19)
C4—C5—C6—C1	0.7 (4)	C10—C11—C12—C13	0.0 (4)
Br1—C5—C6—C1	-177.37 (17)	C11—C11—C12—C13	-179.53 (19)
C2—C1—C6—C5	-1.6 (4)	C11—C12—C13—C8	-0.6 (4)
C7—C1—C6—C5	174.0 (2)	C9—C8—C13—C12	0.9 (4)
C8—N1—C7—C1	169.8 (2)	N1—C8—C13—C12	176.1 (2)

Hydrogen-bond geometry (Å, °)

Cg1 is the centroid of the C1—C6 benzene ring.

<i>D</i> —H... <i>A</i>	<i>D</i> —H	H... <i>A</i>	<i>D</i> ... <i>A</i>	<i>D</i> —H... <i>A</i>
O1—H1...N1	0.82	1.87	2.594 (3)	147
C9—H9...O1 <sup>i</sup>	0.93	2.60	3.459 (4)	154.
C10—H10...Cg1 <sup>ii</sup>	0.93	2.77	3.474 (3)	134
C13—H13...Cg1 <sup>iii</sup>	0.03	2.80	3.501 (3)	133

Symmetry codes: (i) *x*, *y*, *z*-1; (ii) *x*, -*y*+3/2, *z*-1/2; (iii) *x*, -*y*+1/2, *z*+1/2.

Fig. 1

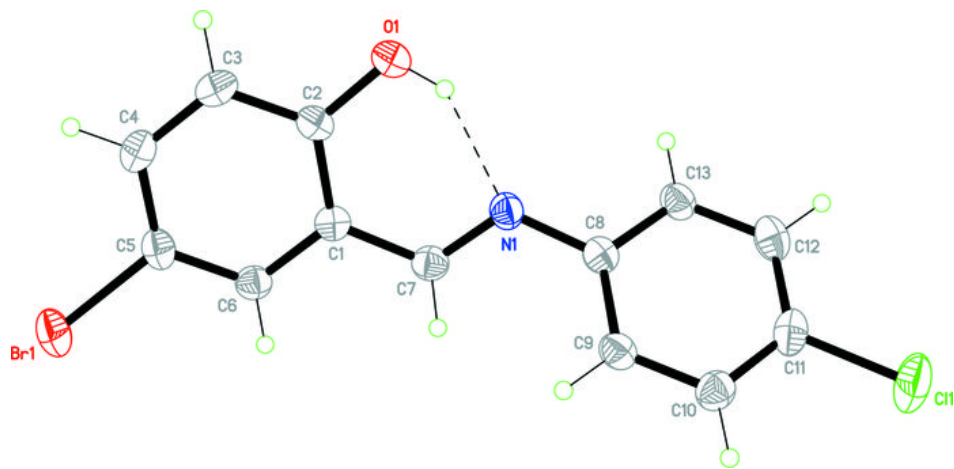




Fig. 2

