



OPEN ACCESS

ORIGINAL ARTICLE

Functional variants in the sucrase–isomaltase gene associate with increased risk of irritable bowel syndrome

Maria Henström,¹ Lena Diekmann,² Ferdinando Bonfiglio,¹ Fatemeh Hadizadeh,¹ Eva-Maria Kuech,² Maren von Köckritz-Blickwede,² Louise B Thingholm,³ Tenghao Zheng,¹ Ghazaleh Assadi,¹ Claudia Dierks,⁴ Martin Heine,² Ute Philipp,⁴ Ottmar Distl,⁴ Mary E Money,^{5,6} Meriem Belheouane,^{7,8} Femke-Anouska Heinsen,³ Joseph Rafter,¹ Gerardo Nardone,⁹ Rosario Cuomo,¹⁰ Paolo Usai-Satta,¹¹ Francesca Galeazzi,¹² Matteo Neri,¹³ Susanna Walter,¹⁴ Magnus Simrén,^{15,16} Pontus Karling,¹⁷ Bodil Ohlsson,^{18,19} Peter T Schmidt,²⁰ Greger Lindberg,²⁰ Aldona Dlugosz,²⁰ Lars Agreus,²¹ Anna Andreasson,^{21,22} Emeran Mayer,²³ John F Baines,^{7,8} Lars Engstrand,²⁴ Piero Portincasa,²⁵ Massimo Bellini,²⁶ Vincenzo Stanghellini,²⁷ Giovanni Barbara,²⁷ Lin Chang,²³ Michael Camilleri,²⁸ Andre Franke,³ Hassan Y Naim,² Mauro D'Amato^{1,29,30}

► Additional material is published online only. To view please visit the journal online (<http://dx.doi.org/10.1136/gutjnl-2016-312456>).

For numbered affiliations see end of article.

Correspondence to

Dr Mauro D'Amato, Unit of Clinical Epidemiology, Department of Medicine Solna, Karolinska Institutet, Eugeniahemmet T2, Karolinska University Hospital, Solna 17176, Stockholm, Sweden; mauro.damato@ki.se

MH and LD, shared first authors; FB, FH, E-MK, shared second authors; HYN and MD'A shared last authors.

Received 16 June 2016
Revised 29 October 2016
Accepted 31 October 2016

To cite: Henström M, Diekmann L, Bonfiglio F, et al. Gut Published Online First: [please include Day Month Year] doi:10.1136/gutjnl-2016-312456

ABSTRACT

Objective IBS is a common gut disorder of uncertain pathogenesis. Among other factors, genetics and certain foods are proposed to contribute. Congenital sucrase–isomaltase deficiency (CSID) is a rare genetic form of disaccharide malabsorption characterised by diarrhoea, abdominal pain and bloating, which are features common to IBS. We tested sucrase–isomaltase (*SI*) gene variants for their potential relevance in IBS.

Design We sequenced *SI* exons in seven familial cases, and screened four CSID mutations (p.Val557Gly, p.Gly1073Asp, p.Arg1124Ter and p.Phe1745Cys) and a common *SI* coding polymorphism (p.Val15Phe) in a multicentre cohort of 1887 cases and controls. We studied the effect of the 15Val to 15Phe substitution on *SI* function in vitro. We analysed p.Val15Phe genotype in relation to IBS status, stool frequency and faecal microbiota composition in 250 individuals from the general population.

Results CSID mutations were more common in patients than asymptomatic controls (p=0.074; OR=1.84) and Exome Aggregation Consortium reference sequenced individuals (p=0.020; OR=1.57). 15Phe was detected in 6/7 sequenced familial cases, and increased IBS risk in case–control and population-based cohorts, with best evidence for diarrhoea phenotypes (combined p=0.00012; OR=1.36). In the population-based sample, 15Phe allele dosage correlated with stool frequency (p=0.026) and *Parabacteroides* faecal microbiota abundance (p=0.0024). The *SI* protein with 15Phe exhibited 35% reduced enzymatic activity in vitro compared with 15Val (p<0.05).

Conclusions *SI* gene variants coding for disaccharidases with defective or reduced enzymatic activity predispose to IBS. This may help the identification of individuals at risk, and contribute to personalising treatment options in a subset of patients.

Significance of this study

What is already known on this subject?

- IBS shows genetic predisposition, but specific causative genes have not been unequivocally identified.
- Certain foods, particularly carbohydrates, are among the proposed triggers of IBS symptoms, at least in some patients.
- The sucrase–isomaltase (*SI*) gene, which is mutated in hereditary recessive forms of sucrose intolerance (congenital sucrase–isomaltase deficiency (CSID)) characterised by diarrhoea, represents an excellent candidate to play a role in IBS predisposition.

What are the new findings?

- Although rare, CSID mutations with known defective disaccharidase (*SI*) properties are found more often in patients with IBS than controls.
- A common *SI* variant (15Phe), which shows reduced enzymatic activity in vitro, is strongly associated with increased risk of IBS.

How might it impact on clinical practice in the foreseeable future?

- Screening for functional *SI* genetic variants may help the identification of subsets of patients with suboptimal carbohydrate (disaccharide) digestion rates.
- This holds potential for stratifying patients with IBS and personalising treatment options in those with *SI* genetic defects.

INTRODUCTION

IBS is the most common gut disorder, affecting more than 10% of the general population in Westernised countries; it is associated with significant healthcare expenditure and considerably affects patients' quality of life.^{1 2} IBS is a functional GI disorder (FGID), diagnosed and classified according to expert consensus guidelines, the Rome criteria, based on recurrent symptoms including abdominal discomfort or pain associated with diarrhoea (IBS-D), constipation (IBS-C) or mixed symptoms (IBS-M).³ The aetiology of IBS is unknown, although psychological stressors, prior infections, dietary irritants, gut dysbiosis, epithelial barrier dysfunction and mucosal immune activation are among the recognised risk factors.⁴ Genetic predisposition has been demonstrated in classical family/twin studies and epidemiological surveys, but unequivocal susceptibility genes have yet to be identified.⁵ Because of incomplete understanding of the mechanisms underpinning IBS pathophysiology, effective treatment options are limited and primarily aimed at targeting symptoms, resulting in suboptimal efficacy.

The role of nutrition and dietary factors is increasingly recognised in IBS. Patients (particularly IBS-D) often report postprandial symptoms,⁶ and many IBS sufferers claim that certain foods are the triggering factors.⁷ Avoidance of carbohydrates due to perceived maldigestion is common, and a diet low in fermentable oligosaccharides, disaccharides, monosaccharides and polyols (FODMAPs, which are poorly absorbed in the small intestine) has been proposed as effective in reducing IBS symptoms.^{8 9} At least in some patients, the food–symptom relation may involve malabsorption of carbohydrates due to inefficient enzymatic breakdown of polysaccharides, which may find indirect support in the observed symptom improvement in patients with postprandial IBS-D treated with pancrealipase,¹⁰ and the detection of disaccharidase deficiency in children with FGID.¹¹

Sucrase–isomaltase (SI) deficiency (also called sucrose intolerance) is a form of carbohydrate malabsorption characterised by diarrhoea, abdominal pain and bloating, which are features common to IBS-D. The symptoms result from defective glucosidase (disaccharidase) activity of the SI enzyme in the small intestine.¹² This enzyme is key to the degradation of starch and sugars digested daily,¹³ and its functional impairment leads to colonic accumulation of unabsorbed carbohydrates causing osmotic diarrhoea. At the same time, this induces a shift in gut microbiota-associated activities of carbohydrate metabolism and fermentation, with increased production of short-chain fatty acids and gases, which contribute to symptom generation. In the congenital form of SI deficiency (congenital sucrase–isomaltase deficiency (CSID)), patients harbour two defective copies of the *SI* gene due to recessive homozygous or compound heterozygous mutations that abolish or dramatically reduce enzymatic activity.^{14 15} CSID usually manifests early in life, but the phenotype and severity of symptoms can vary depending on the specific nature and position (sucrase or isomaltase domain) of different *SI* mutations and their homozygous or heterozygous combinations.¹⁶ In addition, adult patients, previously misdiagnosed with IBS, have been described.^{17 18} Overall, this speaks for a potentially higher clinical impact of *SI* genetic variation than that based solely on the detection of rare homozygous mutations in patients with CSID, evoking the hypothesis that *SI* functional polymorphisms may contribute also to IBS predisposition and symptom generation. If confirmed, this may have important implications in the management of IBS because of the potential for dietary intervention or enzyme supplementation in a subset of genetically exposed patients. To test this hypothesis, we performed a series of independent experiments:

(1) sequencing of the entire *SI* coding region in seven familial cases of severe postprandial IBS-D; (2) detailed in vitro functional characterisation of a common coding variant leading to the amino acid change p.Val15Phe in the SI protein; (3) genotyping and association testing of the most common known CSID mutations,¹⁹ and the p.Val15Phe variant in 1887 individuals from four independent cohorts of IBS cases and controls; (4) in a small Swedish general population sample, pilot analyses of correlation between p.Val15Phe genotype and (i) IBS status (ii) stool frequency and (iii) faecal microbiota composition. The results obtained from these experiments support a role for *SI* genetic variation in IBS.

MATERIALS AND METHODS

Study subjects

IBS probands

Eight Caucasian individuals, namely seven postprandial IBS-D cases (Rome criteria) and one asymptomatic relative, from four unrelated families were selected for sequencing of the *SI* gene (see online supplementary figure S1). Two of the symptomatic patients were parents of two of the probands. Patients experienced meal-related symptoms for more than 2 years and were currently using digestive enzyme supplements to reduce postprandial symptoms (described more in detail in the online supplementary methods).

IBS case–control cohorts

We studied a total of 1031 IBS cases and 856 controls, all non-Hispanic/Latino whites from four independent cohorts from Sweden, Italy and USA, who have been described in detail elsewhere and already included in previous genetic studies.^{20–25} Their demographics and clinical characteristics are reported in [table 1](#), and detailed information is provided in the online supplementary methods and [table S1](#).

PopCol participants

The Population-based Colonoscopy study (PopCol) is a cohort representative of the general population from Stockholm, Sweden, which includes a data-rich set of individuals with available information from bowel symptom questionnaires, 1-week and 2-week bowel pattern diaries, clinical records from gastroenterology visits, blood and stool samples for genetic and microbiota analyses, and histology from biopsies obtained at ileocolonoscopy ([table 1](#), online supplementary [table S1](#) and online supplementary methods).^{26 27}

All study participants provided informed consent, and the study protocols were approved by local ethics committees.

Sequencing (*SI* and 16S) and genotyping

Sequencing of the *SI* coding region was performed as described previously²⁸ and in the online supplementary methods. For the microbiota studies, faecal bacterial DNA was extracted from each sample and 16S rRNA gene amplicon (V1–V2 region) sequencing was performed on the MiSeq platform (Illumina, USA). Read coverage was normalised to 10 000 read per sample, and taxonomic classification was performed as described in the online supplementary methods. Targeted genotyping of known CSID mutations and the p.Val15Phe rs9290264 single nucleotide polymorphism (SNP) in patients with IBS and controls was carried out using the iPLEX chemistry on the MassARRAY platform (Sequenom, USA), while p.Val15Phe PopCol genotypes were extracted from available HumanOmniExpressExome data (Illumina, USA).

Table 1 Demographics and clinical characteristics of study subjects

Case-control cohorts										
	Sweden		Italy		US (Mayo)		US (UCLA)		Total	
	IBS	CTRL	IBS	CTRL	IBS	CTRL	IBS	CTRL	IBS	CTRL
N	387	355	319	255	187	114	138	132	1031	856
Mean age, year	42	42.5	39.6	34.8	47.9	46.6	35.0	33.5	41.4	39.4
% F:M	82:18	43:57	73:27	68:32	91:9	67:33	75:25	58:42	80:20	56:44
IBS-D	127		159		89		42		417	
IBS-C	95		128		56		45		324	
IBS-M	162		32		41		34		269	
IBS-U	3		0		1		17		321	

PopCol	Total	IBS*	CTRL*	Microbiota	Diary
N	250	30	163	136	133
Mean age, year	53.6	51.6	54.7	54.8	54.7
% F:M	64:36	60:40	59:41	62:38	65:35
IBS-D		11			
IBS-C		5			
IBS-M		9			
IBS-U		5			

*IBS cases (IBS) and asymptomatic controls (CTRL) were identified based on questionnaire data according to Rome criteria.

Diary, subjects with available daily recordings of defaecation patterns used for correlation analysis with the Val15Phe variant and stool frequency; Microbiota, subjects with available faecal 16S sequencing data; IBS-C, constipation-predominant IBS; IBS-D, diarrhoea-predominant IBS; IBS-M, IBS mixed phenotype; IBS-U, unclassified IBS; PopCol, Population-based Colonoscopy Study; UCLA, University of California, Los Angeles.

Measurement of SI enzymatic activity in vitro

Functional characterisation of the polymorphism p.Val15Phe was obtained in a well-established SI model system,²⁹ by transiently transfecting monkey fibroblast COS-1 cells with cDNA vectors encoding the 15Val and 15Phe variants. Sucrase activity was measured using sucrose as a substrate as previously described.³⁰ Briefly, immunoprecipitates from 15Val or 15Phe transfected cells were incubated with sucrose (28 mmol/L) for 1 hour at 37°C, and the amount of glucose generated from sucrose hydrolysis was detected using the glucose oxidation-phenol aminopyrine (GOD-PAP) monoreagent method (Axiom GmbH, Germany). To control for transfection efficiency, 15Val and 15Phe activities were normalised relative to the specific SI protein amounts, as measured by immunoblot analysis of the corresponding immunoprecipitates. A detailed description of the protocols adopted for the full in vitro functional characterisation of the p.Val15Phe polymorphism is reported in the online supplementary methods.

In silico and statistical analyses

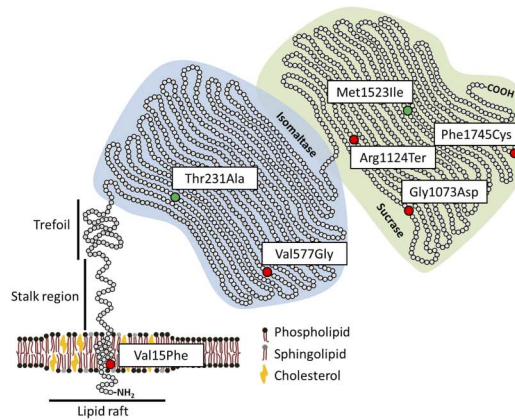
PHRED-like scores from the Combined Annotation-Dependent Depletion (CADD) database V1.3 were used for predicting functional effects of known CSID mutations and SI common coding polymorphisms (see online supplementary methods).³¹ One-sided (testing predisposing risk effects) association analysis of CSID mutations carriage was performed using 2×2 contingency table statistics (Fisher's exact test and χ^2 as appropriate) in IBS cases versus (i) controls and (ii) reference genotypes from publicly available large-scale sequence data for individuals of European descent (<http://exac.broadinstitute.org/>).¹⁹ Association with the p.Val15Phe variant was tested on pooled data using logistic regression under a (best powered) additive genetic model adjusting for sex and batch (recruitment centre). A meta-analysis of results from individual cohorts was also carried out to verify the absence of statistical heterogeneity (see online

supplementary methods). Spearman's correlation was used to assess the relationship between 15Phe copy number, stool frequency and gut microbiota composition in the PopCol cohort. Functional differences in 15Val and 15Phe SI protein properties in in vitro experiments were evaluated using Student's t-tests. More detailed descriptions of the statistical procedures are reported in the online supplementary methods.

RESULTS

Sequencing of the SI gene in IBS families

Seven familial cases and one asymptomatic relative (control) from four IBS-D families were included in the SI sequencing effort (see online supplementary figure S1 and online supplementary methods), aiming to identify SI mutations or variants of potential relevance to IBS. No new variants were detected in this experiment (data not shown), and all sequenced family members were homozygous for SI reference coding alleles, except at two sites, namely missense SNPs rs9290264 (p.Val15Phe) and rs9283633 (p.Thr231Ala) (see online supplementary figure S1). Together with rs4855271 (p.Met1523Ile), rs9290264 and rs9283633 are the only common (minor allele frequency >0.01) missense SNPs in the SI gene (<http://exac.broadinstitute.org/gene/ENSG0000090402> and figure 1). No conclusive experimental data exist on the potential functional effects of these amino acid changes on SI properties. However, opposite to p.Thr231Ala and p.Met1523Ile that result in benign changes, computational predictions at the CADD database (see online supplementary methods) rank p.Val15Phe among the top 1% most deleterious amino acid substitutions in the human genome,³¹ similar to known CSID mutations (figure 1). Although also common in the general population (allele frequency=0.3), the 15Phe was present in 6/7 (five heterozygous and one homozygous) sequenced affected family members, and cosegregated with IBS in the two families where parental SI sequence data were also

Properties of common *SI* coding variants and known CSID mutations

Variant	SNP(A1>A2)	SI domain	Allele frequency [#]	PHRED score [^]	Prediction (compared to all other variants in the human genome) [^]
Common					
p.Val15Phe	rs9290264(G>T)	TM	T (Phe): 0.3001	26.9	Top 1% most deleterious changes
p.Thr231Ala	rs9283633(A>G)	I	G (Ala): 0.6098	4.4	Bottom 90% of all reference variants
p.Met1523Ile	rs4855271(G>A)	S	A (Ile): 0.9313	6.8	Bottom 90% of all reference variants
CSID mutations					
p.Val577Gly	rs121912615(T>G)	I	G (Gly): 0.0032	21.6	Top 1% most deleterious changes
p.Gly1073Asp	rs121912616(G>A)	S	A (Asp): 0.0017	32.0	Top 1% most deleterious changes
p.Arg1124Ter	rs200451408(C>T)	S	T (Ter): 0.0001	37.0	Top 1% most deleterious changes
p.Phe1745Cys	rs79717168(T>G)	S	G (Cys): 0.0017	22.6	Top 1% most deleterious changes

Figure 1 Properties of sucrose–isomaltase (*SI*) mutants and common coding polymorphisms. Left: schematic representation of *SI* protein structure and functional domains; the position of congenital sucrose–isomaltase deficiency (CSID) mutations and common coding variants is reported and colour-coded according to their functional effects (red=damaging, green=benign). Right: the variants, corresponding dbSNP IDs (<http://www.ncbi.nlm.nih.gov/SNP>), *SI* protein domain location (TM, transmembrane; I, isomaltase; S, sucrose), allele frequency, PHRED-like score (range 1–99, ranking a variant relative to all possible substitutions in the human genome) and predicted functional consequences are reported. [#]Exome Aggregation Consortium browser (<http://exac.broadinstitute.org>); [^]Combined Annotation-Dependent Depletion database (<http://cadd.gs.washington.edu/info>). SNP, single nucleotide polymorphism.

available (see online supplementary figure S1). Based on the above information, we set to undertake a functional *in vitro* characterisation of the 15Phe coding allele.

Functional characterisation of the Phe15Val coding polymorphism

Adopting an established *in vitro* model previously used to study known CSID mutants, *SI* 15Val and 15Phe protein variants were individually expressed in COS-1 cells and tested for potential differences in their functional properties. The patterns of glycosylation and trypsin digestion, as well as the intracellular distribution and trafficking kinetics, appeared to be similar for the two variants (not shown). However, when tested for their relative cell surface expression, which requires association with lipid rafts through the stalk region adjacent to residue 15 where the 15Phe substitution occurs, the two variants' behaviour was consistently different under a series of experimental conditions, and the 15Phe variant showed a 20% reduction of cell surface localisation compared with 15Val (figure 2A–C). Of note, the 15Phe *SI* variant had an overall 35% reduction of enzyme activity compared with 15Val, after normalisation and quantification of immunoprecipitated proteins from COS-1 transfected cells ($p < 0.05$; figure 2D).

Association analysis of CSID mutations and the 15Phe variant in IBS cases and controls

A total of 1887 individuals from four independent IBS case-control cohorts were included in the analysis of the *SI* gene in IBS (table 1). The four most common known CSID mutations (p.Val577Gly, p.Gly1073Asp, p.Arg1124Ter and p.Phe1745Cys) were genotyped in these cohorts and tested for their potential to confer IBS risk. Twenty-two heterozygous IBS cases and ten heterozygous controls were identified, consistent with a trend for patients with IBS to have nearly two times higher odds of carrying a CSID mutation than asymptomatic controls ($p = 0.074$, OR=1.84; table 2). This finding (statistically weak due to the control sample size likely inadequate to test rare variants) could be consolidated by inspecting public data from a reference panel of >30 000 sequenced European individuals from the Exome Aggregation Consortium. As shown in table 2,

significant results were obtained both for p.Val577Gly and a cumulative analysis of CSID mutations ($p = 0.0029$, OR=2.11 and $p = 0.020$, OR=1.57, respectively). The distribution of mutations into different IBS subtypes was even for p.Val577Gly, which maps to the isomaltase domain of the *SI* protein, though the other mutations affecting the sucrose domain (p.Gly1073Asp, p.Arg1124Ter and p.Phe1745Cys; figure 1) were found only in patients with IBS-D and IBS-M (table 2). The IBS predisposing potential of the 15Phe variant was also tested by genotyping the entire sample for the rs9290264 (Val15Phe) SNP. As shown in table 3, 15Phe was significantly associated with increased risk of IBS in a logistic regression analysis of the combined cohorts under an additive genetic model adjusted for sex and recruitment centre ($p = 0.0030$, OR=1.26). Similar findings (associations and effect sizes) were obtained using a dominant model, while recessive association testing yielded negative results (data not shown). Of note, the strength of association appeared to vary in different IBS subtypes, as 15Phe significantly affected disease risk only in the subtypes characterised by diarrhoea, and the D and M subtypes combined provided the best evidence of association and stronger genetic risk effects ($p = 0.00051$, OR=1.34 for the IBS-D/IBS-M; table 3). Similar IBS genetic risk effects were observed across all four datasets, and a meta-analysis of associations from individual cohorts yielded results identical to the pooled analyses and devoid of statistical heterogeneity (Cochran's Q range 0.55–0.97 and heterogeneity index $I^2 = 0$ for all IBS traits; online supplementary figure S2).

Analysis of the 15Phe variant in relation to bowel function and microbiota in the general population

A data-rich subset of 250 individuals from the PopCol cohort was studied to run pilot tests of the relevance of 15Phe in the general population, in relation to bowel function, symptoms and microbiota composition (table 1). Using Rome III criteria extracted from questionnaire data, 30 IBS and 163 symptom-free individuals were identified, and, despite small sample size, a significant association was detected between 15Phe and increased IBS risk, particularly IBS-M ($p = 0.017$, OR=3.81; table 3). Combining these data with the case-control results

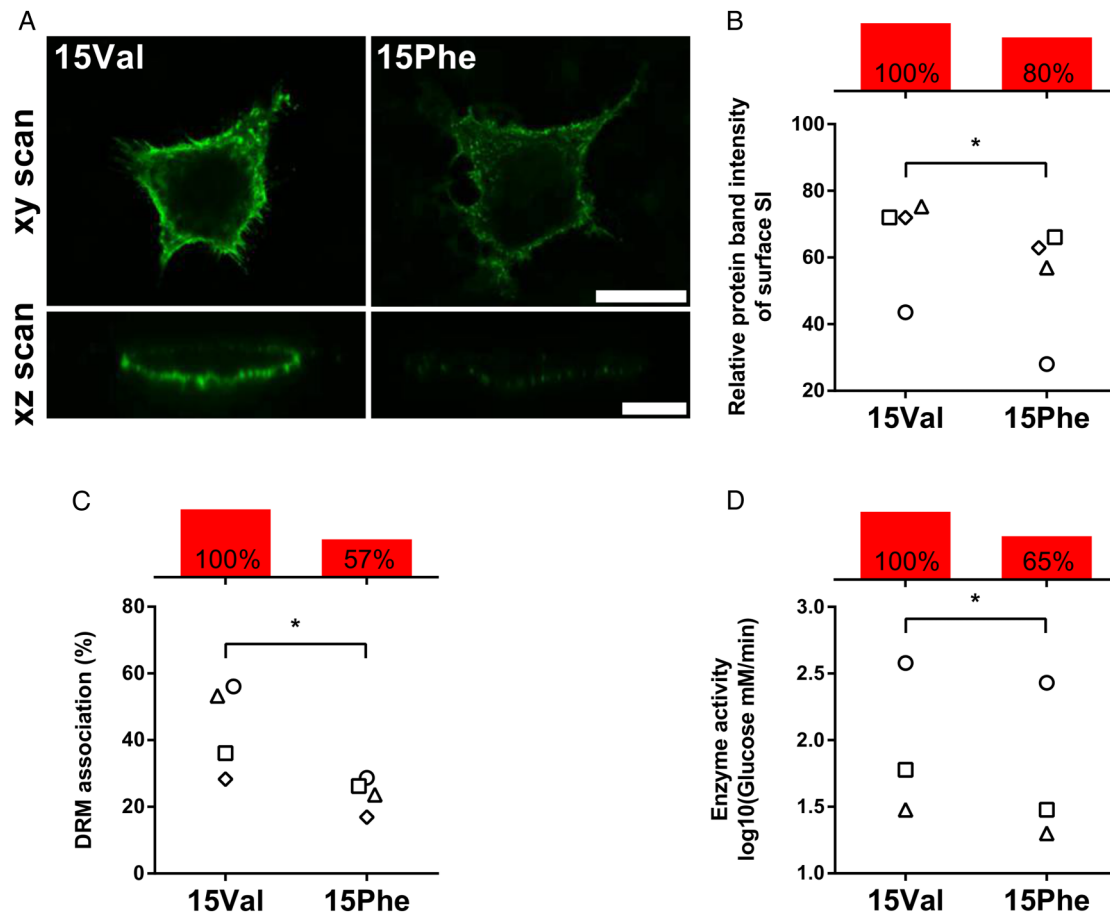


Figure 2 Functional characterisation of the p.Val15Phe coding polymorphism. COS-1 cells were transiently transfected with either 15Val or 15Phe cDNAs and studied 48 hours after transfection. Individual values for 15Val and 15Phe cells from the same experiment are indicated with identical symbols. Net differences are reported with red bars as per cent average relative to 15Val arbitrarily set as 100% reference. (A) Cell surface localisation via immunofluorescence. Non-permeabilised cells were immunostained with a mixture of anti-sucrase–isomaltase (SI) antibodies and Alexa 488 secondary antibody, and analysed by confocal laser scanning microscopy on the xy (scale bar 25 μ m) and xz planes (scale bar 10 μ m). (B) Quantification of cell surface expression. SI surface proteins were labelled with biotin and immunoprecipitated using anti-SI antibodies after cell lysis. Immunoprecipitates were divided into two equal aliquots and analysed by immunoblotting with either anti-SI or anti-streptavidin antibodies. Relative quantification of surface-bound SI versus total cell SI was performed, and results are expressed in relation to values obtained for 15Val, which is set to 100%. (C) Quantification of association with sphingolipid/cholesterol-rich microdomains (lipid rafts) via detergent-resistant membrane (DRM) analysis. Following non-ionic detergent cell lysis, SI proteins were immunoprecipitated, fractionated by ultracentrifugation into insoluble (pellet, raft) and soluble (supernatant, non-raft) fractions, and DRM association (raft) quantified by immunoblotting with anti-SI antibodies. (D) Quantification of enzymatic activity. Sucrase activity was determined on immunoprecipitated SI proteins by measuring glucose release with the GOD–PAP method, upon normalisation for total protein amount by immunoblotting. * $p < 0.05$.

Table 2 Association of known CSID mutations with IBS

	IBS N=1031	Subtypes	CTRLS N=856	p Value*	OR	ExAC N=31 402	p Value*	OR
p.Val577Gly	14	4 IBS-D, 5 IBS-M, 5 IBS-C	6	0.12	1.95	203	0.0029	2.11
p.Gly1073Asp	3	3 IBS-D	3	0.57	0.83	109	0.42	0.89
p.Arg1124Ter	1	1 IBS-D	0	–	–	8	0.077	0.04
p.Phe1745Cys	4	1 IBS-D, 2 IBS-M, 1 IBS-U	1	0.25	3.33	110	0.42	1.11
Any mutation	22	9 IBS-D, 7 IBS-M, 5 IBS-C, 1 IBS-U	10	0.074	1.84	430	0.020	1.57

*p Value for carriage of SI mutations in IBS cases (IBS) versus controls (CTRLS) and versus ExAC-sequenced individuals of European descent (ExAC).

CSID, Congenital sucrase–isomaltase deficiency; ExAC, Exome Aggregation Consortium; SI, sucrase–isomaltase; IBS-C, constipation-predominant IBS; IBS-D, diarrhoea-predominant IBS; IBS-M, IBS mixed phenotype; IBS-U, unclassified IBS. Significant p Values (<0.05) highlighted in bold italics.

further strengthened the evidence of association with IBS, which was strongest in patients with diarrhoea from the IBS-M and IBS-D subtypes (combined $p = 0.00012$, OR = 1.36; [table 3](#)). In 133 PopCol individuals who had daily recordings of

defaecation patterns (see online supplementary methods), a significant correlation ($p = 0.026$) was observed between the number of 15Phe copies and mean stool frequency, with homozygous carriers showing the highest number of bowel

Table 3 Association of the 15Phe variant with IBS

	CTRL		IBS		IBS-C		IBS-D		IBS-M		IBS-D/M					
	AF	AF	p Value	OR	AF	p Value	OR	AF	p Value	OR	AF	p Value	OR	AF	p Value	OR
Case-control	0.264	0.306	0.0030*	1.26	0.279	0.42	1.09	0.312	0.0082	1.30	0.329	0.0026*	1.41	0.319	0.00051*	1.34
PopCol	0.29	0.417	0.045	1.89	0.400	0.45	1.72	0.409	0.20	1.88	0.556	0.017	3.81	0.475	0.013	2.50
Combined	0.268	0.309	0.0013*	1.27	0.281	0.39	1.10	0.314	0.0052	1.30	0.336	0.00057*	1.46	0.323	0.00012*	1.36

*p Value significant after Bonferroni correction for multiple comparisons (N=15), considering five traits (IBS, IBS-C, IBS-D, IBS-M and IBS-D/M) in three datasets (case-control cohorts, PopCol and both combined). Significant p Values (<0.05) highlighted in bold italics.

AF, 15Phe allele frequency; CTRL, controls; IBS-C, constipation-predominant IBS; IBS-D, diarrhoea-predominant IBS; IBS-D/M, IBS-D+IBS-M; IBS-M, IBS mixed phenotype; p Value, p Value from logistic regression adjusted for sex and batch (centre).

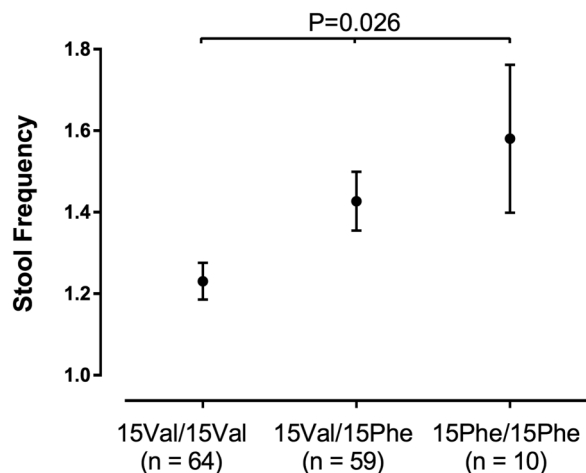


Figure 3 Correlation between p.Val15Phe genotype and stool frequency. Mean (\pm SD) number of bowel movements per day (stool frequency, y-axis) is reported for Population-based Colonoscopy Study individuals (with available diary data) stratified according to the genotype at the p.Val15Phe single nucleotide polymorphism site (x-axis). The Spearman's p value for the correlation test is also reported.

movements per day (figure 3). However, no significant findings were obtained from a similar analysis assessing the relationship with stool consistency (measured on the Bristol Stool Form Scale, not shown). Faecal microbiota data (16S rRNA gene sequencing) were available for 136 PopCol-genotyped individuals and used to test the potential relation between host p.Val15Phe genotype and gut bacterial community composition (see online supplementary methods). By testing the 20 most abundant genera (see online supplementary table S2), we detected Bonferroni-corrected significant inverse correlation between the number of 15Phe copies and the abundance of *Parabacteroides* ($p=0.0024$; online supplementary figure S3). This was independent of IBS status and bowel complaints, as the correlation was still significant when tested in the subset of 90 PopCol symptom-free individuals (data not shown).

DISCUSSION

Our studies show that genetic variation in the *SI* gene is associated with predisposition to IBS. We detected a twofold increased risk of IBS in heterozygous carriers of known rare CSID mutations. In addition, we detected genetic risk effects attributable to a common coding variant, 15Phe at SNP rs9290264, which cosegregated with IBS in some affected families, and was associated with increased disease odds in large multinational IBS case-control cohorts and a pilot general

population sample. Although the current study only targeted a few selected functional variants, the *SI* gene harbours >700 other (mostly rare) coding SNPs. Hence, *SI* polymorphisms may influence IBS risk across different homozygous, heterozygous and compound heterozygous allelic combinations, and future resequencing and large-scale *SI* genotyping efforts may lead to the identification of additional IBS risk variants.

As previously demonstrated for CSID mutants with established *SI* defects, we also discovered that the 15Phe variant imparts deficient enzymatic properties, resulting in 35% reduced disaccharidase activity in vitro. Reduced carbohydrate degradation rates may result in altered concentrations of starch and sugar (sucrose) breakdown products across the intestine, possibly including colonic increase of undigested disaccharides not absorbed through the small intestine. In the large bowel, osmotic luminal water release, microbiota composition and bacterial fermentation with gas production are all potentially affected by these changes, with repercussions across diverse bowel functions and, ultimately, symptoms.^{12 32} Of interest, in the PopCol cohort, we observed a positive correlation between the number of 15Phe copies and defaecation frequency, which might be due to the effects on transit time mediated by similar mechanisms. Hence, genotype-dependent reduction of *SI* disaccharidase function appears to affect disease risk across a clinical spectrum ranging from severe monogenic CSID forms to milder complex IBS manifestations. The latter is particularly true for IBS phenotypes characterised by diarrhoea, since, similar to the effect of rare mutations in CSID, 15Phe shows strongest association with the IBS-M and IBS-D subtypes while no significant results were obtained for IBS-C. This notion is important because it may help identify a subgroup of patients with IBS with inherited predisposition to disaccharide maldigestion, which holds potential for personalised approaches to their clinical management.

Dietary carbohydrates are recognised triggers in many IBS sufferers, who often implement food avoidance regimes in the attempt to control or reduce their symptoms; thus, 52% of 1242 US patients with IBS who completed an IBS-Patient Education Questionnaire in 2007 also believed IBS is caused by lack of digestive enzymes.³³ The results from our study provide a biological basis for these beliefs, by demonstrating potential mechanisms mediating the interplay between carbohydrate consumption and enzymatic (*SI*) defects in their digestion. At the same time, they also provide a rationale for future studies of bowel symptoms in patients with IBS stratified according to *SI* genotype in eventual trials of dietary exclusion of sucrose or enzyme supplementation. With increasing recognition of the importance of dietary factors in IBS, our results may contribute to inform FODMAP-based strategies for the treatment of IBS. For instance, it may be of high interest to further evaluate

low-FODMAP diets or similarly effective traditional dietary intervention strategies³⁴ for their efficacy in reducing IBS symptoms by also taking into account patients' *SI* genotype.

Finally, the results from our pilot study of PopCol microbiota composition in relation to Val15Phe genotype are interesting, because faecal microbiota concentration of *Parabacteroides* has been shown to decrease with higher dietary carbohydrate intake,³⁵ and this genus was under-represented in patients with IBS, at least in some studies.^{36 37} Although unlikely of causative nature, the negative correlation between 15Phe allele dosage and *Parabacteroides* abundance may thus contribute to the identification and further stratification of patients with IBS with *SI* disturbances.

In conclusion, we report the first experimental evidence pointing to nutrigenetic mechanisms associated with IBS predisposition and symptom generation. This holds potential for stratifying patients with IBS and personalising treatment options in those with *SI* genetic defects.

Author affiliations

¹Department of Biosciences and Nutrition, Karolinska Institutet, Stockholm, Sweden

²Department of Physiological Chemistry, University of Veterinary Medicine Hannover, Hannover, Germany

³Institute of Clinical Molecular Biology, Christian-Albrechts-University of Kiel, Kiel, Germany

⁴Department of Animal Breeding and Genetics, University of Veterinary Medicine Hannover, Hannover, Germany

⁵Internal Medicine Department, University of Maryland School of Medicine, Baltimore, Maryland, USA

⁶Meritus Medical Center, Hagerstown, Maryland, USA

⁷Max Planck Institute for Evolutionary Biology, Plön, Germany

⁸Institute for Experimental Medicine, Christian-Albrechts-University of Kiel, Kiel, Germany

⁹Gastroenterology Unit, Department of Clinical Medicine and Surgery, Federico II University Hospital, Naples, Italy

¹⁰Diagnosis and Therapy of Digestive Motility Diseases, Department of Clinical Medicine and Surgery, Federico II University Hospital, Naples, Italy

¹¹S.C. Gastroenterologia, Azienda Ospedaliera G. Brotzu, Cagliari, Italy

¹²Gastroenterology Unit, Padova University-Hospital, Padova, Italy

¹³Department of Medicine and Aging Sciences and CeSi, G. D'Annunzio University, Chieti, Italy

¹⁴Division of Neuro and Inflammation Science, Department of Clinical and Experimental Medicine, Linköping University, Linköping, Sweden

¹⁵Department of Internal Medicine and Clinical Nutrition, Institute of Medicine, Sahlgrenska Academy, University of Gothenburg, Gothenburg, Sweden

¹⁶Center for Functional GI and Motility Disorders, University of North Carolina, Chapel Hill, North Carolina, USA

¹⁷Division of Medicine, Department of Public Health and Clinical Medicine, Umeå University, Umeå, Sweden

¹⁸Division of Internal Medicine, Department of Clinical Sciences, Skåne University Hospital, Malmö, Sweden

¹⁹Division of Internal Medicine, Department of Clinical Sciences, Lund University, Lund, Sweden

²⁰Department of Medicine, Karolinska Institutet, Center for Digestive Diseases, Karolinska University Hospital, Stockholm, Sweden

²¹Division for Family Medicine, Department of Neurobiology, Care Sciences and Society, Karolinska Institutet, Huddinge, Stockholm, Sweden

²²Stress Research Institute, Stockholm University, Stockholm, Sweden

²³Division of Digestive Diseases, Oppenheimer Center for the Neurobiology of Stress, David Geffen School of Medicine, University of California, Los Angeles, USA

²⁴Department of Microbiology, Tumor and Cell Biology, Karolinska Institutet, Stockholm, Sweden

²⁵Department of Biomedical Sciences and Human Oncology, University of Bari 'Aldo Moro', Bari, Italy

²⁶Gastrointestinal Unit, Department of Gastroenterology, University of Pisa, Pisa, Italy

²⁷Department of Medical and Surgical Sciences, University of Bologna, St. Orsola-Malpighi Hospital, Bologna, Italy

²⁸Clinical Enteric Neuroscience Translational and Epidemiological Research, Mayo Clinic, Rochester, Minnesota, USA

²⁹BioDonostia Health Research Institute, San Sebastian and IKERBASQUE, Basque Science Foundation, Bilbao, Spain

³⁰Unit of Clinical Epidemiology, Department of Medicine Solna, Karolinska Institutet, Stockholm, Sweden

Acknowledgements The authors thank Professor Dr Hans-Peter Hauri (Biocenter, Basel, Switzerland) and Professor Dr Erwin Sterchi (University of Bern, Bern, Switzerland) for providing monoclonal anti-sucrase-isomaltase antibodies.

Contributors HYN and MDA: study concept, design and supervision; MvK-B, CD, MHei, UP, OD, MEM, GN, RC, PU-S, FG, MN, SW, MS, PK, BO, PTS, GL, AD, LA, AA, EM, LE, PP, MB, VS, GB, LC and MC: characterisation of study individuals and data acquisition; LD, E-MK and HYN: functional in vitro experiments; FHa, LBT, MB, F-AH, JFB, AF and MDA: microbiota analyses; GA and MDA: genotyping; MHe, LD, FH, FB, TZ, MB, F-AH, JR, JFB, AF, HYN and MDA: data integration, analysis and interpretation; MHe, LD, HYN and MDA: drafting of the manuscript with input and critical revision from all other authors.

Funding This work was supported by grants from the Swedish Research Council (Vetenskapsrådet), the Olle Engkvist Byggmästare Foundation and an unrestricted research grant from Medical Need Europe AB to MDA; the European Union Seventh Framework Programme (FP7/2007–2013, ESIG) to MDA and AF; the German Research Foundation (DFG) Research Training Grant 1743 and Excellence Cluster 306 to AF; the German Research Foundation DFG to HYN; the Soderbergs Foundation to LE; NIH grants P50 DK64539, P01 DK33506 and DK047343 to EM and LC.

Competing interests The work was partially financed by an unrestricted grant from Medical Need Europe AB to MDA. MDA and HYN have received unrestricted research grants and lecturing honoraria from QOL Medical, and LC has served on a scientific advisory board for QOL Medical.

Ethics approval Local ethics committees at Karolinska Institutet, Mayo Clinic, University of California, Los Angeles (UCLA), Bologna University, University of Veterinary Medicine Hannover.

Provenance and peer review Not commissioned; externally peer reviewed.

Open Access This is an Open Access article distributed in accordance with the Creative Commons Attribution Non Commercial (CC BY-NC 4.0) license, which permits others to distribute, remix, adapt, build upon this work non-commercially, and license their derivative works on different terms, provided the original work is properly cited and the use is non-commercial. See: <http://creativecommons.org/licenses/by-nc/4.0/>

REFERENCES

- 1 Sperber AD, Dumitrascu D, Fukudo S, *et al*. The global prevalence of IBS in adults remains elusive due to the heterogeneity of studies: a Rome Foundation working team literature review. *Gut* Published Online First: 27 Jan 2016. doi: 10.1136/gutjnl-2015-311240
- 2 Chey WD, Kurlander J, Eswaran S. Irritable bowel syndrome: a clinical review. *JAMA* 2015;313:949–58.
- 3 Drossman DA. The functional gastrointestinal disorders and the Rome III process. *Gastroenterology* 2006;130:1377–90.
- 4 Camilleri M. Peripheral mechanisms in irritable bowel syndrome. *N Engl J Med* 2012;367:1626–35.
- 5 Gazouli M, Wouters MM, Kapur-Pojścił L, *et al*. Lessons learned—resolving the enigma of genetic factors in IBS. *Nat Rev Gastroenterol Hepatol* 2016;13:77–87.
- 6 Ragnarsson G, Bodemar G. Pain is temporally related to eating but not to defaecation in the irritable bowel syndrome (IBS). Patients' description of diarrhea, constipation and symptom variation during a prospective 6-week study. *Eur J Gastroenterol Hepatol* 1998;10:415–21.
- 7 Böhn L, Störsrud S, Törnblom H, *et al*. Self-reported food-related gastrointestinal symptoms in IBS are common and associated with more severe symptoms and reduced quality of life. *Am J Gastroenterol* 2013;108:634–41.
- 8 Gibson PR, Varney J, Malakar S, *et al*. Food components and irritable bowel syndrome. *Gastroenterology* 2015;148:1158–74.
- 9 De Giorgio R, Volta U, Gibson PR. Sensitivity to wheat, gluten and FODMAPs in IBS: facts or fiction? *Gut* 2016;65:169–78.
- 10 Money ME, Walkowiak J, Virgilio C, *et al*. Pilot study: a randomised, double blind, placebo controlled trial of pancrelipase for the treatment of postprandial irritable bowel syndrome-diarrhoea. *Frontline Gastroenterol* 2011;2:48–56.
- 11 Karnsakul W, Luginbuehl U, Hahn D, *et al*. Disaccharidase activities in dyspeptic children: biochemical and molecular investigations of maltase-glucoamylase activity. *J Pediatr Gastroenterol Nutr* 2002;35:551–6.
- 12 Treem WR. Congenital sucrase-isomaltase deficiency. *J Pediatr Gastroenterol Nutr* 1995;21:1–14.
- 13 Diaz-Sotomayor M, Quezada-Calvillo R, Avery SE, *et al*. Maltase-glucoamylase modulates gluconeogenesis and sucrase-isomaltase dominates starch digestion gluconeogenesis. *J Pediatr Gastroenterol Nutr* 2013;57:704–12.
- 14 Alfalah M, Keiser M, Leeb T, *et al*. Compound heterozygous mutations affect protein folding and function in patients with congenital sucrase-isomaltase deficiency. *Gastroenterology* 2009;136:883–92.

- 15 Naim HY, Heine M, Zimmer K-P. Congenital sucrase-isomaltase deficiency: heterogeneity of inheritance, trafficking, and function of an intestinal enzyme complex. *J Pediatr Gastroenterol Nutr* 2012;55(Suppl 2):S13–20.
- 16 Ouwendijk J, Moolenaar CE, Peters WJ, *et al*. Congenital sucrase-isomaltase deficiency. Identification of a glutamine to proline substitution that leads to a transport block of sucrase-isomaltase in a pre-Golgi compartment. *J Clin Invest* 1996;97:633–41.
- 17 Muldoon C, Maguire P, Gleeson F. Onset of sucrase-isomaltase deficiency in late adulthood. *Am J Gastroenterol* 1999;94:2298–9.
- 18 Ringrose RE, Preiser H, Welsh JD. Sucrase-isomaltase (palatinase) deficiency diagnosed during adulthood. *Dig Dis Sci* 1980;25:384–7.
- 19 Uhrich S, Wu Z, Huang J-Y, *et al*. Four mutations in the SI gene are responsible for the majority of clinical symptoms of CSID. *J Pediatr Gastroenterol Nutr* 2012;55 (Suppl 2):S34–5.
- 20 Wouters MM, Lambrechts D, Knapp M, *et al*. Genetic variants in CDC42 and NXP1 as susceptibility factors for constipation and diarrhoea predominant irritable bowel syndrome. *Gut* 2014;63:1103–11.
- 21 Zucchelli M, Camilleri M, Andreasson AN, *et al*. Association of TNFSF15 polymorphism with irritable bowel syndrome. *Gut* 2011;60:1671–7.
- 22 Ek WE, Reznichenko A, Ripke S, *et al*. Exploring the genetics of irritable bowel syndrome: a GWA study in the general population and replication in multinational case-control cohorts. *Gut* 2015;64:1774–82.
- 23 Beyder A, Mazzone A, Stregge PR, *et al*. Loss-of-function of the voltage-gated sodium channel NaV1.5 (channelopathies) in patients with irritable bowel syndrome. *Gastroenterology* 2014;146:1659–68.
- 24 Grasberger H, Chang L, Shih W, *et al*. Identification of a functional TPH1 polymorphism associated with irritable bowel syndrome bowel habit subtypes. *Am J Gastroenterol* 2013;108:1766–74.
- 25 Orand A, Gupta A, Shih W, *et al*. Catecholaminergic gene polymorphisms are associated with GI symptoms and morphological brain changes in irritable bowel syndrome. *PLoS ONE* 2015;10:e0135910.
- 26 Walter SA, Kjellström L, Nyhlin H, *et al*. Assessment of normal bowel habits in the general adult population: the Popcol study. *Scand J Gastroenterol* 2010;45:556–66.
- 27 Kjellström L, Molinder H, Agréus L, *et al*. A randomly selected population sample undergoing colonoscopy: prevalence of the irritable bowel syndrome and the impact of selection factors. *Eur J Gastroenterol Hepatol* 2014;26:268–75.
- 28 Sander P, Alfalah M, Keiser M, *et al*. Novel mutations in the human sucrase-isomaltase gene (SI) that cause congenital carbohydrate malabsorption. *Hum Mutat* 2006;27:119.
- 29 Moolenaar CE, Naim HY. Cloning and expression of human intestinal sucrase-isomaltase. *Biochem Soc Trans* 1995;23:304S.
- 30 Dahlqvist A. Assay of intestinal disaccharidases. *Anal Biochem* 1968;22:99–107.
- 31 Kircher M, Witten DM, Jain P, *et al*. A general framework for estimating the relative pathogenicity of human genetic variants. *Nat Genet* 2014;46:310–15.
- 32 Chassard C, Lacroix C. Carbohydrates and the human gut microbiota. *Curr Opin Clin Nutr Metab Care* 2013;16:453–60.
- 33 Halpert A, Dalton CB, Palsson O, *et al*. What patients know about irritable bowel syndrome (IBS) and what they would like to know. National Survey on Patient Educational Needs in IBS and development and validation of the Patient Educational Needs Questionnaire (PEQ). *Am J Gastroenterol* 2007;102:1972–82.
- 34 Bohn L, Storsrud S, Liljebo T, *et al*. Diet low in FODMAPs reduces symptoms of irritable bowel syndrome as well as traditional dietary advice: a randomized controlled trial. *Gastroenterology* 2015;149:1399–407.
- 35 Wu GD, Chen J, Hoffmann C, *et al*. Linking long-term dietary patterns with gut microbial enterotypes. *Science* 2011;334:105–8.
- 36 Noor SO, Ridgway K, Scovell L, *et al*. Ulcerative colitis and irritable bowel patients exhibit distinct abnormalities of the gut microbiota. *BMC Gastroenterol* 2010;10:134.
- 37 Rangel I, Sundin J, Fuentes S, *et al*. The relationship between faecal-associated and mucosal-associated microbiota in irritable bowel syndrome patients and healthy subjects. *Aliment Pharmacol Ther* 2015;42:1211–21.



Functional variants in the sucrase–isomaltase gene associate with increased risk of irritable bowel syndrome

Maria Henström, Lena Diekmann, Ferdinando Bonfiglio, Fatemeh Hadizadeh, Eva-Maria Kuech, Maren von Köckritz-Blickwede, Louise B Thingholm, Tenghao Zheng, Ghazaleh Assadi, Claudia Dierks, Martin Heine, Ute Philipp, Ottmar Distl, Mary E Money, Meriem Belheouane, Femke-Anouska Heinsen, Joseph Rafter, Gerardo Nardone, Rosario Cuomo, Paolo Usai-Satta, Francesca Galeazzi, Matteo Neri, Susanna Walter, Magnus Simrén, Pontus Karling, Bodil Ohlsson, Peter T Schmidt, Greger Lindberg, Aldona Dlugosz, Lars Agreus, Anna Andreasson, Emeran Mayer, John F Baines, Lars Engstrand, Piero Portincasa, Massimo Bellini, Vincenzo Stanghellini, Giovanni Barbara, Lin Chang, Michael Camilleri, Andre Franke, Hassan Y Naim and Mauro D'Amato

Gut published online November 21, 2016

Updated information and services can be found at:

<http://gut.bmj.com/content/early/2016/11/20/gutjnl-2016-312456>

These include:

References

This article cites 36 articles, 7 of which you can access for free at: <http://gut.bmj.com/content/early/2016/11/20/gutjnl-2016-312456#BIBL>

Open Access

This is an Open Access article distributed in accordance with the Creative Commons Attribution Non Commercial (CC BY-NC 4.0) license, which permits others to distribute, remix, adapt, build upon this work non-commercially, and license their derivative works on different terms, provided the original work is properly cited and the use is non-commercial. See: <http://creativecommons.org/licenses/by-nc/4.0/>

Email alerting service

Receive free email alerts when new articles cite this article. Sign up in the box at the top right corner of the online article.

Topic Collections

Articles on similar topics can be found in the following collections

[Open access](#) (313)
[Diarrhoea](#) (663)
[Irritable bowel syndrome](#) (327)

Notes

To request permissions go to:

<http://group.bmj.com/group/rights-licensing/permissions>

To order reprints go to:

<http://journals.bmj.com/cgi/reprintform>

To subscribe to BMJ go to:

<http://group.bmj.com/subscribe/>